

The Rake's Progress

1970

Saturday, November 14, 1970 8:00 PM

Tuesday, November 17, 1970 8:00 PM

Friday, November 27, 1970 8:00 PM

SFO\_PUB\_01\_SFO\_1970\_09

Publications Collection

San Francisco Opera Archives

# PERFORMING ARTS



1970

San Francisco Opera





# Nine dollars

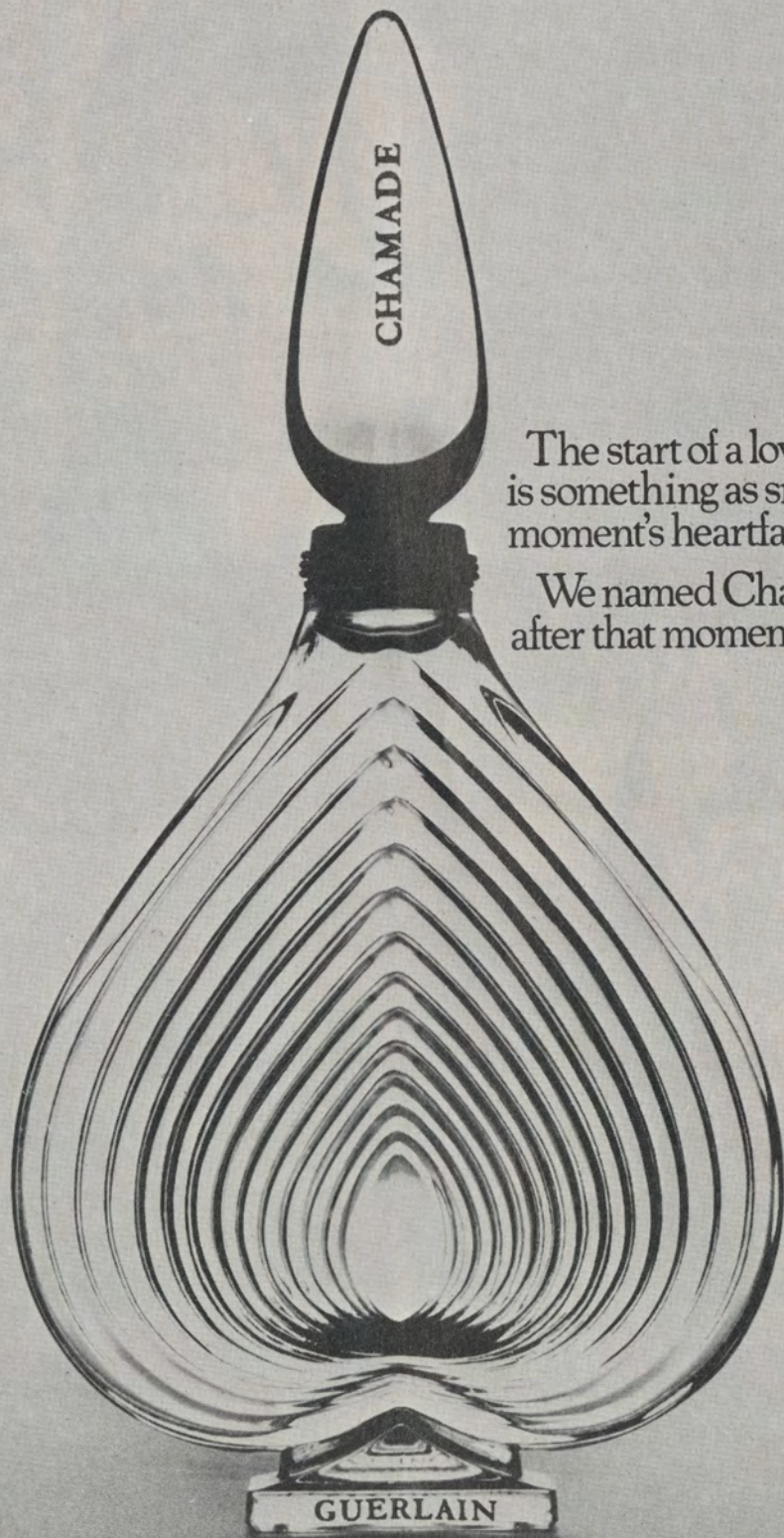
A rough breakdown on why it's not five dollars, or six, or seven...

Importation from Virgin Islands . . .	\$ .65
Ingredients . . . . .	1.45
<small>(Sun-ripened coconuts, milk chocolate from Holland, Virgin Islands pure cane sugar, alcohol, and ingredients of a secretive nature)</small>	
Labor and materials . . . . .	2.15
<small>(Coconut breakers, chocolate choppers, native packers, wicker weavers, and other talent. Bottle, wicker, cork, other)</small>	
Profits and Taxes . . . . .	3.97
<small>(For inventor E. Delatour, as well as the distributor, wholesaler, and the liquor store owner. U.S., State and other government taxes)</small>	
Sales and advertising costs . . . . .	.70
Label, including designer's fee . . . . .	.03
	<u>\$9.00</u>

**ChoCoCo** More than meets the eye.

If you cannot find ChoCoCo, write Custom Import House, Ltd., 555 Madison Avenue, Drawer L, New York, New York 10022.  
\*New York-California average. 60 proof, Custom Import House, Ltd., New York





CHAMADE

The start of a love story  
is something as small as a  
moment's heartfall.

We named Chamade  
after that moment.

GUERLAIN



BEAUTY  
REPORT:

# GEMINESSE



MRS. WILLIAM A. TISHMAN

*There are no two ways  
about this - it's a  
marvelously exciting  
way to look!*



# THE DOUBLE ENTENDRE EYE

An exciting collection of new concepts in eye make-up that suggests, in its own fashionable way, there's more to beauty than meets the eye.

#### **The Double Entendre Eye Shadow Compact**

Double cakes of silky shadows in colors that hint of wildflowers. One, a fresh, vibrant pastel to sweep on over and under the eye. Its companion, a misty iridescent to use as a highlight over the cheekbone, under the brow, wherever you want to add a shimmering nuance.

#### **The Double Entendre Liner Compact**

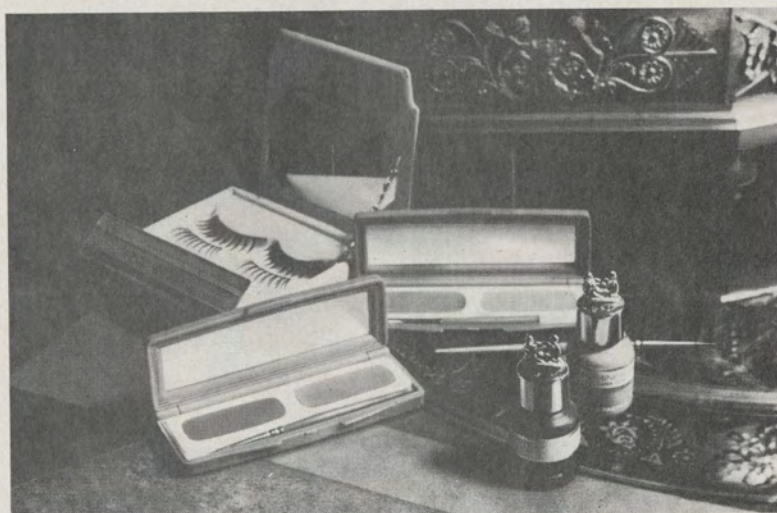
A case of two tone-on-tone pastels. On one side, a quiet underliner. On the other, a more intense hue to line the upper lid or shade the hollow of the eye.

#### **The Nature Lashes**

As "au naturel" as a lash can look. A set of silky, spikey upper and lower lashes, meticulously trimmed in artful little clusters, that look to all the world like nature's own.

#### **The Geminesse Eye Make-up Collection**

All it takes to see eye to eye with fashion. Including other colorful interpretations of the Double Entendre Eye in Geminesse Eye Shadow Cream and Liquid Liner. Here, at last, are totally new concepts in color... to give a glorious new definition to your eyes.



**GEMINESSE**  
MAX FACTOR



**ARCO**



Petroleum Products of

**AtlanticRichfieldCompany**

**Great art is as irrational  
as great music. It is mad  
with its own loveliness.**

George Jean Nathan



Leonardo da Vinci

Self-portrait

1513



# PERFORMING ARTS

SAN FRANCISCO'S MUSIC & THEATRE MONTHLY  
NOVEMBER 1970 / VOL. 4, NO. 11

## contents



**recording: the illusions and the realities** 9  
*by James Goodfriend*



**the program** 15



**critical words** 50

**the hamlet syndrome** 59  
*by Leonard Lyons*

**performing arts/stereo** 61  
*by John Milder*

MICHAEL CLIFTON  
*publisher*

MICHEL PISANI  
*associate publisher*

HERBERT GLASS  
*editor*

BERNARD ROTONDO  
*art director*

SARA WILLARD  
*managing editor*

T. M. LILIENTHAL  
*director of advertising*

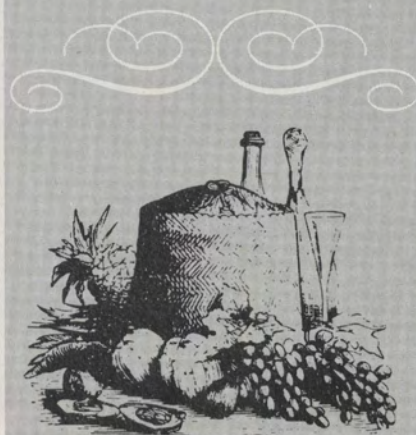
FLORENCE QUARTARARO  
*director of sales*

GILMAN KRAFT  
*president*

GEORGE KORSEN  
*treasurer*

KATHLEEN RUYSDAEL  
*administrative assistant*

PERFORMING ARTS is published monthly and circulated to audiences attending prime attractions at the Opera House and other San Francisco theatres—average monthly circulation 150,000. Performing Arts is also published in Los Angeles and circulated at the Music Center—average monthly circulation 200,000. All rights reserved, © 1970 by Performing Arts. Reproduction from this magazine without written permission is prohibited. PERFORMING ARTS—S.F. Edition: 485 Brannan Street, San Francisco, California 94107. Telephone (415) 781-8931; L.A. Edition: 147 S. Robertson Boulevard, Beverly Hills, California 90211. Telephone (213) 659-2160.



## NOB HILL RESTAURANT

### THE OVERTURE

BEFORE THE OPERA HOUSE...  
DINNER IS SPECIAL AT THE  
NOB HILL RESTAURANT...  
A FITTING PRELUDE TO  
A FESTIVE EVENING

### THE ENCORE

THE EVENING'S LAST HURRAH...  
INTIMATE AFTER-SHOW SUPPER  
...DANCING.  
A SMILE IN YOUR SLEEP

*Hotel Mark Hopkins*

NUMBER ONE NOB HILL  
A Loew's Hotel  
Preston Robert Tisch, President





"WINGED BULL"

The first in a series of collector's pieces by Baccarat. This design is a reproduction of a Persian frieze, c. 400 B.C., engraved on a clear crystal block.

Baccarat Crystal Room • Second Floor

GUMP'S

250 POST STREET • SAN FRANCISCO



"One of the most vital elements in making a recording is taste, and it is all too often most noticeable by its absence."

# Recording: The Illusions And The Realities

by JAMES GOODFRIEND

**Y**OU MIGHT ASSUME, when examining a typical LP record, that it is made out of some kind of malleable plastic molded to form physical equivalents of sound in its grooves, and colored with carbon black to give it an air of seriousness of purpose. It isn't. It is made out of money, large amounts of it, scraped together, cut up, and divided into dozens of little piles to pay dozens of people each to do their own specialized thing. You can frequently smell the money in a record. Sometimes it smells like a fresh young wine, vigorous and optimistic in its youth. Sometimes it smells like a classic claret of a favored vintage, proud in the attainment of its grand maturity. Sometimes it smells like vinegar — or like a lemon.

Most records, like most wines, are made in pretty much the same way. How they turn out — artistically and commercially — is only minimally dependent upon the process of manufacture. But the process is interesting nonetheless, because it defines the limits of what can be done. Since records are a totally different medium than live performance (and they demonstrate the crucial differences more with each succeeding year), it is well



Conductor Seiji Ozawa (facing camera) at a playback session for a recent Chicago Symphony recording. EMI/Angel photo.



# A. Genaro Union Street



*Royal Copenhagen's Flora Danica  
Saskia Crystal by Wittwer*

Visit our Collector's Showrooms

## The Japanese Steak Ceremony.

At Benihana we turn a steak into an experience you'll never forget. And we do it before your very eyes.

We put into this experience centuries of tradition, the skill of a Japanese chef born and trained in Japan, and the finest steak you can get.

So come. Experience a steak with us.

**BENIHANA of TOKYO**  
YOUR TABLE IS OUR KITCHEN.

740 Taylor St., San Francisco  
771-8414

New York, Chicago, Encino,  
Beverly Hills, Las Vegas, Harrisburg,  
Fort Lauderdale, Seattle, Portland, Ore.,  
Puerto Rico, Honolulu, Tokyo.



to know something about their possibilities and their limits so that one can make intelligent judgements on the music they provide.

All commercial records today are recorded first on tape, and since stereo is now the dominant mode of recorded reproduction, they are recorded in some form of stereo. I say "some form," because while the finished product, the stereo record, provides just two channels of sound, a left and a right, the initial tape recording may contain as many as sixteen separate and independent recorded tracks, all, of course, to be played back simultaneously.

Actually, we first have to redefine some terms. "Left," for example, in a recording studio, does not really mean left; it means whatever is being fed into the microphone or microphones that will ultimately play through your left-hand speaker. The instruments playing, for all you know, could be physically left, right, center, or in another room entirely. In other words, the engineer, not the conductor, controls what is going to be left or right

(continued on p.12)



Nicolai Gedda (third from bottom), Maria Callas (behind Mr. Gedda) and cast of the EMI/Angel "Carmen" face a phalanx of microphones in a Paris Studio. To simulate stage action, singers in operatic recordings sing from various locations, their positions being guided by the numbers on the floor.





**I have seen a truly remarkable place.**

It is a place with unquestionably the finest beach still remaining on the Pacific coastline. Broad, gently shelving sand; a sparkling, docile ocean beyond.

It is a place where a tower is rising beside the sea. In it, a wide selection of apartment condominiums, designed for every degree of luxury, every need. Vistas from every balcony panoramic and spectacular; grounds spacious, elegant and protected.

It is a place where the climate is softly even; ocean-cooled in summer, tropics-warmed in winter. Every spectator and participation sport is at your doorstep or close by.

It is a place for all the seasons of your life: a retreat, a reward, a possession, an investment.

It is a place called Coronado Shores, in the charming village of Coronado, across the new bay bridge from California's colorful, 200-year old San Diego. A place so easily reached, with non-stop air service from most major American cities.

One-, two- and three-bedroom apartments are priced from \$37,900 to \$74,900. Write for a fully detailed brochure.

Coronado Shores is truly a remarkable place. You must see it for yourself!

 **Coronado Shores**

P. O. Box 220 • Coronado, Calif. 92118 • (714) 435-6234



A Loew's Corp./J. H. Snyder Co. Environmental Community



# MEET A ROTHSCHILD AT DINNER TONIGHT!

*A Baron Philippe de Rothschild wine  
for only \$3.29*



## *Mouton-Cadet 1966*

(You can also enjoy other fine vintage Bordeaux  
wines from the cellars of Baron Philippe de  
Rothschild at your favorite stores and restaurants.)

SOLE DISTRIBUTOR U.S.A.: MUNSON SHAW CO., NEW YORK



*Your introduction to the distinguished collections of authentic  
English and European designs by Baker may be arranged  
through your interior designer or dealer.*

*Baker Furniture Co.*

CABINET MAKERS

1050 Battery Street, San Francisco

*Division of The Magnavox Company*

or center. "Center," by the way, means whatever is going to be fed in equal amounts to your left- and right-hand speakers, so that you will have the aural illusion that the sound is coming from neither one nor the other but from directly between them.

So, then, the sound is initially recorded on two or more tracks, up to sixteen — which I believe is the utmost any professional tape recorder can handle this month; next month may be different. The choice of number of tracks (and number of microphones) is not a meaningless one. For example, if you are recording an orchestra in a hall, two microphones and two tracks will provide the greatest sense of natural depth in the recording. This is so because the sounds of instruments vary according to their distance from the ear (or the microphone) and the human hearing and understanding mechanism is quite sensitive to these variations and assigns an aural perspective to the invisible orchestra on the basis of the information it receives. Now, if we use four microphones, placing two in front of the orchestra, and two halfway toward the rear of the orchestra, the instruments at the rear will sound more clearly — have more "presence" — while the depth illusion will be cut in half. If, to go to an ultimate point, we assign a microphone to every instrument in the orchestra, every instrument will be maximally clear, but there will be absolutely no sense of depth at all. If we believe, then, that depth is a necessary element in the reproduction of music, and we also believe that the ideal sound of any instrument is that when the instrument is clearest and most "close up" (not necessarily loudest, because loudness can always be adjusted), it can be seen that every recording is a compromise between opposite ideals. Virtually every record company, producer, or engineer draws the line of compromise at a different point, thus in one way accounting for the incredible number of different acoustical ambiances that issue from different records. Of course, one does not have to believe in the validity of either or both of the two ideals. But most record companies do.

The decision of what sort of microphone and multiple track setup to use is largely dependent on the sort of music to be recorded. In general, the simpler, more straightforward systems are used for classical music, the most





The original cast of "Hair" recording the "American tribal love rock musical" for RCA.

complex ones being reserved for popular music, particularly rock. While few classical producers employ the purist two-microphone, two-recording track system, some still do, and many use a three-microphone, three-track system. The particular advantage of the third track (which will later be evenly divided, left and right, and thus be a center) is most evident in recordings of concertos: the soloist is recorded on a track by himself, and this allows the ultimate balance of soloist and orchestra (always a very tricky matter in recording) to be readjusted and modified after the session is over. It makes such recordings easier and offers a built-in safety factor, but, as one can hear from many concerto recordings, the technique is often abused by electronically establishing a totally unreal and unmusical balance between soloist and orchestra. One of the most vital elements in making a recording is taste, and it is all too often most noticeable by its absence.

Recordings of more complicated classical works — operas, cantatas, oratorios — where the recording must deal with many independent sources of sound, are frequently made with multiple microphones. But the tendency in classical recording is still to feed the output of those multiple microphones into no more than three recording tracks, setting the essential balances at the recording session itself with minor adjustments to be made afterwards.

Most rock recordings (and many other popular music recordings) are done in precisely the opposite way. Every element is recorded separately and on a separate track and the balances of one part with the others are established long after the recording session itself has taken place. There is one minor and one major reason behind this. Producers and consumers of classical music are very much preoccupied with high fidelity sound quality, and the more microphones, the more tracks, and the more electronic processes the music has to go through, the more noise and distortion are added to the final record. Such distortion is usually considered a negligible factor in pop music recordings (unless specifically intended to be models of sonic excellence). That is the minor reason. The major reason is that those who produce classical music on records know in advance what the music is supposed to sound like and can therefore match what they hear to a mental image and make adjustments until the two coincide; the sound of much popular music, on the other hand, first comes into existence in the recording studio, and what it is supposed to sound like may not be decided until months later. At one time, popular performers tried to have their records sound like their live performances; now they face the exceedingly difficult task of trying to make their live performances sound like their records. (continued on p.55)

## Sand Pebbles

The colors of the sea captured in an emerald and diamond ring or jade and diamond chain bracelet.

1200.00

2500.00

103 GEARY  
Weisfield's Jewelers





## Fleurs des Siècles

Created by the renowned American designer Jane Hutcheson, these hand crafted enamel flowers are reminiscent of the work of Faberge and 17th & 18th century Vincennes Porcelaine. From \$30 to \$200.

**shreve's**

SAN FRANCISCO • SAN MATEO • STANFORD



# ROBERT WATT MILLER



1899 - 1970

As the curtain goes up on our 1970 season, we of the San Francisco Opera feel a great void. Robert Watt Miller is no longer with us.

We have missed him sorely during the pre-season stage and orchestra rehearsals of which he was such a familiar part for so many years. He used to come into the house and sit in the middle section of the empty main floor, often with a vocal score from his large library, which he would examine to see if there had been any changes in cuts or text. Frequently he walked towards the back of the auditorium to the stage director's desk to give highly valued criticism and comments.

On performance nights he arrived as much as one hour before curtain time, first making a trip to the box office to check on ticket sales, then going backstage to look at the setup and converse with technical personnel. If an organ was placed in the wings, he would almost always sit down and play several passages, the "Largo" by Handel being his favorite selection.

During performances his seat was at the back of Box F, subscribed for by him at all times. He had a very keen eye; whenever he rushed backstage, everyone knew he had noticed something wrong with the scenery or lighting before anyone else had.

After a premiere he would come on stage during curtain calls to personally thank and congratulate the artists. If he

was particularly pleased, he would visit the dressing rooms of singers or directors. He asked all artists appearing with the Company for a signed photograph; the picture gallery in his home was a remarkable documentation of more than 30 years of our opera. Before leaving the theatre, he would often walk around with me on the empty stage to give his frank opinion of the performance. While he was always kind, his praise was not given lightly, so it meant a great deal when it was forthcoming.

We had long and fascinating conversations during his visits to my office, sometimes during repeat performances or on Saturday afternoons. Shortly after last Christmas, he came the day before I left for Europe and stayed for several hours. I could not anticipate that this was to be his final visit.

In his memory Mr. Miller's friends and admirers, from all walks of life and from many parts of the world, have sent contributions to the San Francisco Opera. It is especially fitting that the Board of Directors has authorized the use of these funds to create a new production of *Die Meistersinger von Nürnberg* for presentation during our 1971 season in honor of Robert Watt Miller. It was one of his favorite operas and it is my hope that our new production will be the tangible expression of our deepest gratitude for his many years of service and devotion to the San Francisco Opera.

*Frank Merbert Alden*





N°5  
**CHANEL**  
PERFUME



# SAN FRANCISCO OPERA

## Officers

PRENTIS COBB HALE  
*President*

ROBERT A. HORNBY  
*Assistant to the President*

R. GWIN FOLLIS  
RICHARD K. MILLER  
*Vice Presidents*

MARCO F. HELLMAN  
*Treasurer*

ROBERT C. HARRIS  
*Secretary*

## Board of Directors

MRS. JOSEPH L. ALIOTO  
ERNEST ARBUCKLE  
PHILIP S. BOONE  
ARTHUR MERRILL BROWN, JR.  
JOHN M. BRYAN  
MRS. HARRY CAMP, JR.  
EDWARD W. CARTER  
MRS. JANE NEYLAN CHILDS  
RICHARD P. COOLEY  
MRS. JOSEPH D. CUNEO  
REID W. DENNIS  
MRS. DEWEY DONNELL  
RUDOLPH J. DREWS  
MRS. LENNART G. ERICKSON  
R. GWIN FOLLIS  
ROBERT GERDES  
EDWARD H. GAUER  
GEORGE B. GILLSON  
PRENTIS COBB HALE  
RICHARD C. HAM  
MRS. RICHARD C. HAM  
MRS. LAWRENCE W. HARRIS  
ROBERT C. HARRIS  
MARCO F. HELLMAN  
JAY HOLMES  
ROBERT A. HORNBY  
MRS. THOMAS CARR HOWE  
FRED G. HUDSON, M.D.  
JAQUELIN H. HUME  
EDGAR F. KAISER  
EDWARD D. KEIL  
SENATOR WILLIAM F. KNOWLAND  
ROGER D. LAPHAM, JR.  
ROBERT C. LEEFELDT

MRS. DAVIES LEWIS  
GEORGE S. LIVERMORE  
MRS. CARL LIVINGSTON  
MRS. DAN E. LONDON  
JOHN A. McCONE  
ROBERT A. MAGOWAN  
WILLIAM C. MATTHEWS  
JOHN R. METCALF  
WILSON MEYER  
AIME MICHAUD  
OTTO N. MILLER  
RICHARD K. MILLER  
ERNST OPHULS  
RUDOLPH A. PETERSON  
MRS. LOUIS A. PETRI  
MRS. STANLEY POWELL  
JAMES D. ROBERTSON  
ARTHUR ROCK  
MRS. WILLIAM ROTH  
A. E. SBARBORO  
JAMES H. SCHWABACHER, JR.  
MRS. LOUIS SLOSS  
EMMETT G. SOLOMON  
RALPH J. A. STERN  
HENRY F. TRIONE  
MRS. NION R. TUCKER  
BROOKS WALKER, JR.  
MRS. RICHARD C. WALKER  
MRS. EDMOND C. WARD  
WHITNEY WARREN  
MRS. PAUL L. WATTIS  
ALEJANDRO ZAFFARONI, Ph.D.  
HAROLD L. ZELLERBACH

## Forty-Eighth Annual Season

Sept. 18 - Nov. 29, 1970

## War Memorial Opera House

KURT HERBERT ADLER  
*General Director*

HOWARD K. SKINNER  
*Manager*

CARMEN  
Bizet

FAUST  
Gounod

COSI FAN TUTTE  
Mozart

TOSCA  
Puccini

SALOME  
Strauss

THE RAKE'S PROGRESS  
Stravinsky

FALSTAFF  
Verdi

NABUCCO  
Verdi

OTELLO  
Verdi

SIEGFRIED  
Wagner

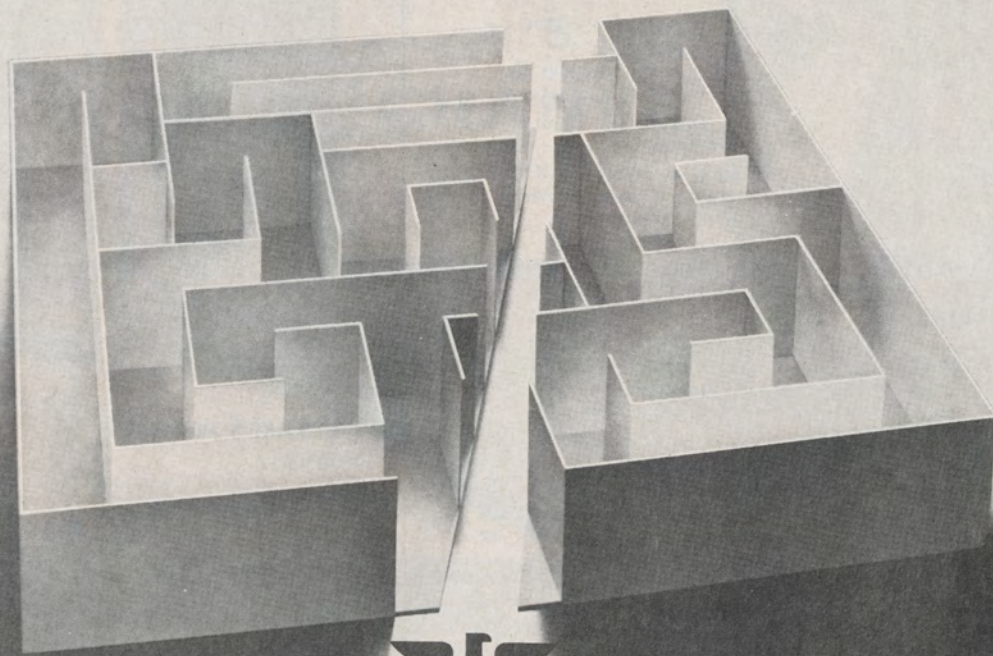
TRISTAN UND ISOLDE  
Wagner

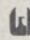


A MOST UNUSUAL BANK  
Regional Banking

# straight line banking

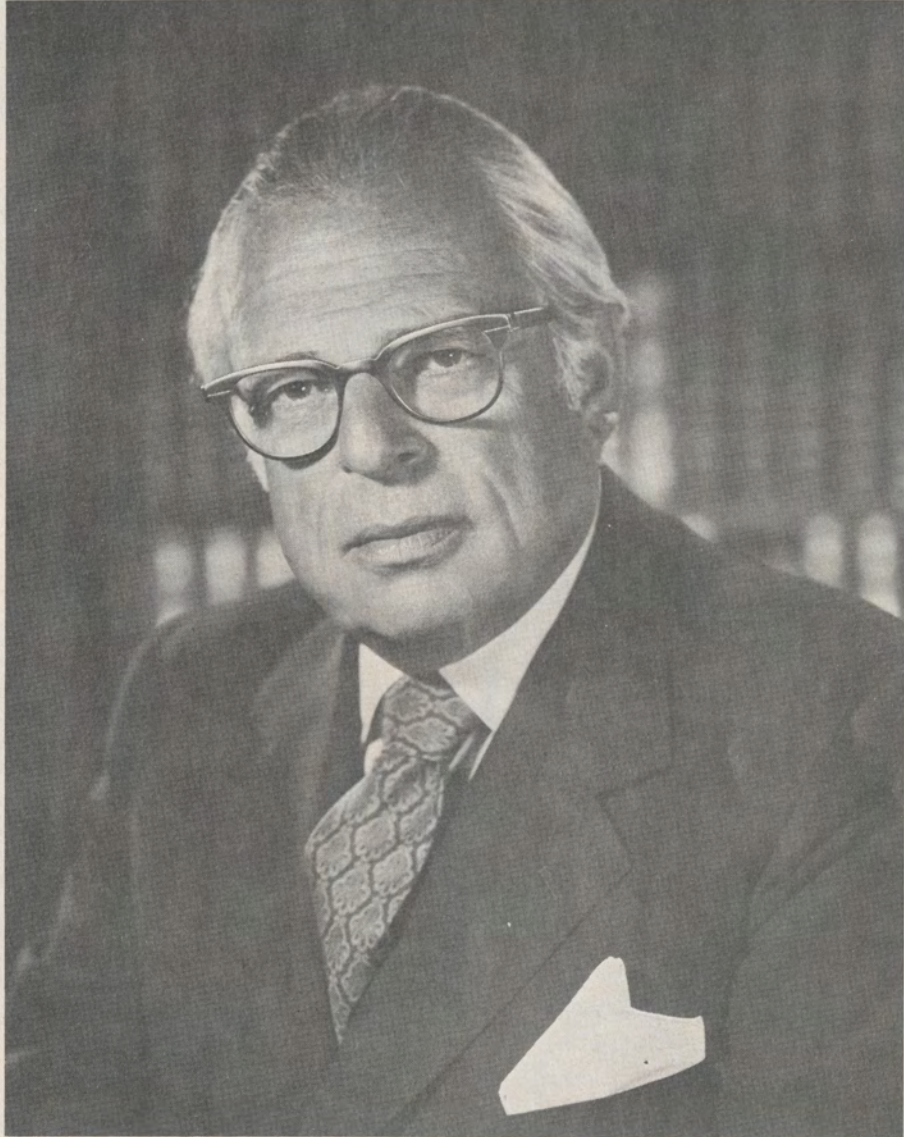
The direct approach.  
The shortest distance between problem and solution. It is Union Bank's concept and practice of Regional Banking that make it happen. The Regional Vice President is the man in charge. He has both the experience and the authority to cut a path directly through to your objective. Regional Banking. It saves time and makes money. The difference it makes may amaze you.



 A Unionamerica Company

SERVING CALIFORNIA THROUGH A UNIQUE REGIONAL BANKING SYSTEM





WILLIAM J. RADER

**KURT HERBERT ADLER**  
*General Director*





*An Arpege Promise*

*Dear Broadway,  
I promise that any similarity  
between this ad and my musical,  
"Promises, Promises" is purely  
intentional.  
Love, David Merrick*

(Promise her anything but give her Arpege.)



SAN FRANCISCO  
**OPERA**  
 Company/1970

*Conductors* Bruno Bartoletti\*, Carlo Felice Cillario\*, Bohumil Gregor,  
 James Levine\*, Jean Perisson, John Pritchard\*,  
 Gunther Schuller, Otmar Suitner

*Chorus Director* Francesco Prestia\*\*

*Musical Supervisor* Otto Guth

*Assistant for Artists* Philip Eisenberg

*Musical Staff* Irving Beckman\*, Bruce Cohen, Monroe Kanouse\*,  
 Alberto Leone, Alan Lewis\*, Terry Lusk

*Boys Chorus Director* Madi Bacon

*Stage Directors* Renate Ebermann, Geraint Evans\*\*, Matthew Farruggio,  
 Allen Fletcher\*, Ghita Hager, Paul Hager, Lotfi Mansouri,  
 Jean-Pierre Ponnelle

*Company Coordinator* Matthew Farruggio

*Assistant Stage Directors* Virginia Irwin, Jacques Karpo

*Assistant Stage Manager* Elisa Ronstadt\*

*Production Assistant* David Wheeler\*

*Choreographers* Carlos Carvajal\*, Janet Collins\*, Nancy Johnson

*Ballet Mistress* Nancy Johnson

*Productions Designed by* Leni Bauer-Ecsy, Howard Bay, Thomas Colangelo, Jr.,  
 Robert Darling, Andreas Nomikos, Jean-Pierre Ponnelle,  
 Wolfram Skalicki, Wieland Wagner, Davis L. West

*Costumers* Goldstein & Company

*Wardrobe Department* Craig Hampton, Patricia Bibbins

*Wig and Makeup Department* Richard Stead, Laurence Cannon, Marcia Garcia,  
 Don Le Page, Charles Mullen, Lili Rogers, Rex Rogers,  
 Leslie Sherman

*Rehearsal Department* Linda Lilienfeld, Martha Munro, Jock Scowcroft

*Super Department* Madeline Chase

*Production Coordinator* John Priest

*Scenic Construction* Pierre Cayard

*Scenic Artist* Davis L. West

*Master Carpenter* Michael Kane

*Master Electrician* George Pantages

*Master of Properties* Ivan Van Perre

*Technical Assistant* Catherine Hand

*Official Photographers* Ken Howard, Jay Mitchell, Margaret Norton, Pete Peters,  
 Charles Woods

*Graphic Design* Judith Clancy, Chuck Mueller

TECHNICAL STAFF FOR WAR MEMORIAL OPERA HOUSE

*Master Carpenter* Thomas Salyer

*Master Electrician* Cecil Forbes

*Master of Properties* Perrie Dodson

Artists/1970

Sylvia Anderson  
 Judith Beckman\*\*  
 Teresa Berganza  
 Ariel Bybee\*  
 Sona Cervena  
 Lili Chookasian\*  
 Mary Costa  
 Regine Crespin  
 Joy Davidson\*  
 Brigitte Fassbaender\*\*  
 Raina Kabaivanska  
 Dorothy Kirsten  
 Carolyn Lewis\*  
 Berit Lindholm\*  
 Marion Lippert\*  
 Jane Marsh  
 Janis Martin  
 Shigemi Matsumoto  
 Sheila Nadler  
 Birgit Nilsson  
 Donna Petersen  
 Margaret Price  
 Graziella Sciutti  
 Anja Silja

Ara Berberian  
 Rolf Bjoerling\*  
 Stuart Burrows  
 Renato Capecchi  
 Guy Chauvet  
 Dominic Cossa\*  
 Ryland Davies\*\*  
 Placido Domingo  
 William Dooley\*  
 Geraint Evans  
 Howard Fried  
 Clifford Grant  
 David Hall-Sundquist\*  
 Stephen Janzen  
 Richard Lombardi\*  
 Cornell MacNeil  
 Richard Magary\*  
 Raymond Manton  
 James McCracken  
 Allan Monk  
 Gerd Nienstedt\*  
 Timothy Nolen  
 Kostas Paskalis\*  
 Glade Peterson  
 Louis Quilico  
 Dan Richardson\*\*  
 Alberto Rinaldi\*  
 Roger Soyer\*\*  
 Ludovic Spiess  
 Thomas Stewart  
 Jess Thomas  
 Giorgio Tozzi  
 Ragnar Ulfung  
 Jose Van Dam\*  
 Nolan Van Way\*  
 Alain Vanzo\*\*  
 Jon Vickers

roster subject to revision

\*San Francisco Opera debut

\*\*American debut



# You can't take it with you but it would be nice to leave it behind.



It would be nice to feel that your estate won't be eaten up by taxes and probate fees. Wouldn't it?

Be nice to know, too, that your family is adequately protected.

Well that's where we come in—because we can help. Working with your attorney, we can advise you on ways to protect your estate against unnecessary taxes and settlement costs.

Our trust people are experts on such complex

matters as tax work, property management and investment counseling. And naturally they're backed by the experience and facilities of one of California's most experienced banks.

After all, there are some things that are nice to keep in the family. One of them is money.

## Crocker-Citizens

CROCKER-CITIZENS NATIONAL BANK • MEMBER FDIC



# SAN FRANCISCO OPERA

## 1st Violin

Stuart Canin  
*Concertmaster*  
Zaven Melikian  
Ferdinand F. Claudio  
Ervin Mautner  
Silvio Claudio  
Ezequiel Amador  
Mafalda Guaraldi  
John Wittenberg  
Lennard Petersen  
Ernest Michaelian  
Harry Moulin  
Frances Shorr

## 2nd Violin

Felix Khuner  
*Principal*  
George Nagata  
Zelik Kaufman  
Herbert Holtman  
Rose Kovats  
Ronald Erickson  
Frederick Koegel  
Gail Schwarzbart  
Reina Schivo

## Viola

Rolf Persinger  
*Principal*  
Detlev Olshausen  
Lucien Mitchell  
Asbjorn Finess  
Hubert Sorenson  
David Smiley  
Carol Garrett

## Cello

Robert Sayre  
*Principal*  
Rolf Storseth  
Mary Claudio  
Ellen Dessler  
Tadeusz Kadzielawa  
Helen Stross

## Bass

Philip Karp  
*Principal*  
Charles Siani  
Carl Modell  
Donald Prell  
Michael Burr

## Flute

Walter Subke  
*Principal*  
Lloyd Gowen  
Gary Gray

## Piccolo

Lloyd Gowen

## Oboe

James Matheson  
*Principal*  
Raymond Duste  
Allyson Christensen

## English Horn

Raymond Duste

## Clarinet

Philip Fath  
*Principal*  
Frealon N. Bibbins  
Donald Carroll

## Bass Clarinet

Frealon N. Bibbins  
Donald Carroll

## Bassoon

Walter Green  
*Principal*  
Jerry Dagg  
Robin Elliott

## Orchestra

### Contrabassoon

Robin Elliott

### French Horn

Herman Dorfman  
William Sabatini  
*Principals*  
James Callahan  
Ralph Hotz  
Jeremy Merrill

### Trumpet

Donald Reinberg  
*Principal*  
Edward Haug  
Chris Bogios

### Trombone

John E. Meredith  
*Principal*  
Willard Spencer  
John Bischof

### Tuba

Floyd Cooley

### Timpani

Roland Kohloff

### Percussion

Lloyd Davis  
Peggy Cunningham  
Lucchesi

### Harp

Ann Adams  
Marcella Decray

### Librarian

Alma Haug

### Personnel Manager

Thomas Heimberg

The Baldwin is the official piano of  
the San Francisco Opera

the  
REVERED  
temple of  
dining  
ARTS...  
RENDEZVOUS  
of the chinese  
GOURMET  
**Kan's**  
GRANT at sacramento  
982-2388

...14th...  
CONSECUTIVE  
HOLIDAY  
AWARD  
FOR DINING  
DISTINCTION

The best seats  
cost more, too.  
**Old Grand-Dad**  
Head of the Bourbon Family

Old Grand-Dad  
Head of the Bourbon Family

Kentucky straight Bourbon whiskeys. 86 proof and 100 proof bottled in bond. Old Grand-Dad Distillery Co., Frankfort, Ky. 40601.





The next best thing  
is being there.



# Birgit Nilsson

Richard Wagner  
**TRISTAN UND ISOLDE**  
Birgit Nilsson  
Wolfgang Windgassen  
Christa Ludwig  
Martti Talvela  
Eberhard Waechter  
**Karl Böhm**  
Bayreuther  
Festspiele  
1966



2713 001

RICHARD  
WAGNER  
**TANNHÄUSER**  
BIRGIT NILSSON · WOLFGANG WINDGASSEN  
DIETRICH FISCHER-DIESKAU · THEO ADAM  
CHARLUND ORCHESTER  
DEUTSCHE OPER BERLIN · OTTO GERDES



2711 008

Wolfgang Amadeus  
Mozart  
**DON  
GIOVANNI**  
Dietrich Fischer-Dieskau · Ezio Flagello  
Birgit Nilsson · Peter Schreier  
Martti Talvela · Martti Talvela  
Keri Grant · Alfredo Martinelli  
ORCHESTER DES  
NATIONALTHEATERS FRANK  
**KARL BOHM**



2711 006



# SAN FRANCISCO OPERA

## Chorus

Arlene Adams  
Candida Arias  
Gloria Bakkila  
Doris Baltzo  
Dorothy Bogart  
Walda Bradley  
Norma Bruzzone  
Cynthia Cook  
Louise Corsale  
Carol Denyer-Bradley  
Sandra Drake  
Janice Felty  
Beverly Finn  
Ann Graber  
Lisa Louise Hill  
Veronika Lebedeff  
Tamaki McCracken  
Irene Moreci  
Ramona Mori  
Sheila Newcombe  
Luana Noble  
Rose Parker  
Jeanne Pfandl  
Cecilia Sanders  
Claudine Spindt  
Giovanna Szymkun

Vasso Theoharous  
Alma Wells  
Elizabeth Wilson  
Sally Winnington  
Arlene Woodburn  
Garifalia Zeissig

Winther Andersen  
Theodore Bakkila  
Jan Budzinski  
Joseph Ciampi  
Harry Clarke  
Peter Van Derick  
Harry M. De Lange  
Mischa Dolnikoff  
James Eitze  
Robert Eggert  
Dennis Emberling  
Spurgeon Felty  
Stan Gentry

John L. Glenister  
Colin Harvey  
L. B. Hayes  
Alva Henderson  
John Hudnall  
Conrad Knipfel  
Eugene Lawrence  
August Lourenzo  
Edward Lovasich  
Kenneth MacLaren  
Ronald Martin  
Robert McCracken  
Carlo Micheletti  
John Miller  
Thomas Miller  
Victor Montano  
Eugene Naham  
Mario Paredes  
Frank Parker  
Charles Pascoe  
James Page  
Robert Romanovsky  
Victor Shedko  
Francis Szymkun  
James Tarantino  
William Tredway

## Boys Chorus

Bradford Brennan  
Craig Brennan  
Robert Calvert  
Frederick Cohen  
David Englund  
David Green  
Randolph Haag  
Andrew Harris

Leonard Kalm  
Richard Kehres  
Tad Laird  
Gary Levy  
Stuart Misfeldt  
Christopher Nowak  
Tyrone Po  
Geoffrey Reed  
Jeremy Renton

Peter Rubardt  
Ted Schoenfeld  
David Sigal  
Scott Spiller  
Cyrian Tabuena  
Eugene Wang  
David Wolins  
Henry Wong

## Ballet

Christine Bennett  
Peggy Davis  
Mela Fleming  
Karen Hornschuch  
Carolyn Houser  
Judanna Lynn  
Leila Parello

Carla Sealander  
Allyson Segeler

Allen Barker  
Gardner Carlson

Donald Eryck  
John Daniel Lordon  
Tony Ness  
Charles Perrier  
Edward Rumberger  
John Sullivan  
Sulpicio Wagner



## First name for the martini

For more  
martini pleasure—  
call the martini  
by its first name.



## BEEFEATER®

FROM ENGLAND BY KOBRAND, NY • 94 PROOF  
100% GRAIN NEUTRAL SPIRITS

These are the  
little old ladies who wear  
Supp-hose® Stockings  
and  
Supp-hose® Panty Hose.



Another fine product of Kayser-Roth





**Win Rave Notices**

with  
*Andrea*

100% European Hair Extensions  
**YOUR PERSONAL EYEDRESSER**

available at  
Emporium — Capwell's — all stores

**J&B**  
*rare scotch*

**Pours More  
Pleasure**



*J&B is a product of the two-centuries-old house of Justerini & Brooks whose patrons have included, along with the immortal Charles Dickens, many of history's great.*

**PENNIES MORE IN COST  
WORLDS APART IN QUALITY**

# SAN FRANCISCO OPERA

## Administration

KURT HERBERT ADLER  
*General Director*

HOWARD K. SKINNER  
*Manager*

JACK M. BETHARDS  
*Management Consultant*

ANN FARRIS  
*Administrative Assistant*

RICHARD RODZINSKI  
*Artistic Assistant*

MATTHEW FARRUGGIO  
*Company Coordinator*

JOHN PRIEST  
*Production Coordinator*

D. M. AZINOFF  
*Comptroller*

EVELYN CROCKETT  
*Executive Assistant*

PATRICK BLAKE  
*Publicity Director*

MARGARET K. NORTON  
*Associate Publicity Director*

KORALJKA LOCKHART  
*Publicity Assistant*

JOHN OLSEN  
*Accountant*

PEGGY DUNLAP  
*Fund Drive Coordinator*

PETER BOTTO  
*Ticket Sales Manager*

WILLIAM MATTHEWS  
*Box Office Treasurer*

ARTHUR BENTLEY  
FAITH BARRY  
OLIVIA BURTON  
MARGOT GOGNIAT  
DAPHNE HOWELL  
LINDA LOPES  
JANET NAPIER  
VIKKI STANDING  
HELGA WEISS  
*Office Staff*

# REPERTOIRE 1970 SEASON

*Opening Night*  
Friday, September 18, 8:00

**TOSCA** (PUCCINI)  
Crespin/Spiess, MacNeil, Van Dam,  
Capecchi, Fried, Nolen, Lombardi  
Conductor: Cillario  
Stage director: Mansouri

*Saturday, September 19, 8:00*

**FALSTAFF** (VERDI)  
Costa, Price, Chookasian, Anderson/Evans,  
Burrows, Richardson, Ulfung, Berberian,  
Manton  
Conductor: Bartoletti  
Stage director: Evans, G. Hager

*Tuesday, September 22, 7:00*

**SIEGFRIED** (WAGNER)  
Lindholm, Nadler, Lewis/Thomas, Stewart,  
Ulfung, Richardson, Berberian  
Conductor: Suitner  
Production: P. Hager  
Designer: Skalicki, West

*Wednesday, September 23, 8:00*

**TOSCA** (PUCCINI)  
Same cast as September 18

*Friday, September 25, 8:00*

**FALSTAFF** (VERDI)  
Same cast as September 19

*Saturday, September 26, 8:00*

**TOSCA** (PUCCINI)  
Same cast as September 18

*Sunday, September 27, 1:00*

**SIEGFRIED** (WAGNER)  
Same cast as September 22

*Tuesday, September 29, 8:30*

**FALSTAFF** (VERDI)  
Same cast as September 19

*Wednesday, September 30, 8:00*

**CARMEN** (BIZET)  
Fassbaender, Marsh, Matsumoto, Nadler/  
Chauvet, Van Dam, Grant, Nolen, Manton,  
Fried  
Conductor: Perisson  
Stage director: Mansouri  
Designer: Bay  
Choreographer: Carvajal

*Friday, October 2, 7:00*

**SIEGFRIED** (WAGNER)  
Last performance this season  
Same cast as September 22

*Saturday, October 3, 8:00*

**CARMEN** (BIZET)  
Same cast as September 30

*Sunday, October 4, 2:00*

**TOSCA** (PUCCINI)  
Same cast as September 18

*Tuesday, October 6, 8:00*

**CARMEN** (BIZET)  
Same cast as September 30

*Wednesday, October 7, 8:00*

**FALSTAFF** (VERDI)  
Last performance this season  
Same cast as September 19

*Friday, October 9, 8:00*

**TOSCA** (PUCCINI)  
Same cast as September 18



Saturday, October 10, 8:00

**NABUCCO** (VERDI)  
Lippert, Anderson, Bybee/MacNeil, Tozzi,  
Bjoerling, Grant, Fried  
Conductor: Cillario  
Production: P. Hager  
Designer: Nomikos, West  
Choreographer: Collins

Sunday, October 11, 2:00

**CARMEN** (BIZET)  
Same cast as September 30

Tuesday, October 13, 8:00

**NABUCCO** (VERDI)  
Same cast as October 10

Friday, October 16, 8:00

**CARMEN** (BIZET)  
Same cast as September 30

Saturday, October 17, 8:00

**COSI FAN TUTTE** (MOZART)  
Production sponsored by  
Crocker-Citizens National Bank  
Price, Berganza, Sciutti/Davies, Rinaldi,  
Capechi  
Conductor: Pritchard  
Production: Ponnelle  
Designer: Ponnelle, West

Sunday, October 18, 2:00

**NABUCCO** (VERDI)  
Same cast as October 10

Tuesday, October 20, 8:30

**COSI FAN TUTTE** (MOZART)  
Same cast as October 17

Wednesday, October 21, 8:00

**NABUCCO** (VERDI)  
Last performance this season  
Same cast as October 10

Friday, October 23, 8:00

**COSI FAN TUTTE** (MOZART)  
Same cast as October 17

Saturday, October 24, 8:00

**SALOME** (STRAUSS)  
Silja, Cervena, Nadler, Matsumoto/Ulfung,  
Nienstedt, Peterson, Van Dam, Nolen,  
Monk, Grant, Fried, Janzen, Manton,  
Hall-Sundquist, Magary, Lombardi  
Conductor: Gregor  
Production: Wagner/Ebermann  
Designer: Wagner/Darling

Tuesday, October 27, 8:30

**SALOME** (STRAUSS)  
Same cast as October 24

Wednesday, October 28, 8:00

**COSI FAN TUTTE** (MOZART)  
Last performance this season  
Same cast as October 17

Friday, October 30, 8:00

**SALOME** (STRAUSS)  
Last performance this season  
Same cast as October 24

Saturday, October 31, 7:00

**TRISTAN UND ISOLDE** (WAGNER)  
Nilsson, Martin/Windgassen, Dooley, Tozzi,  
Monk, Davies, Grant, Hall-Sundquist  
Conductor: Suitner  
Production: P. Hager  
Designer: Bauer-Ecsy, West

Tuesday, November 3, 8:00

**FAUST** (GOUNOD)  
Beckman, Anderson, Cervena/Vanzo, Soyer,  
Cossa, Lombardi  
Conductor: Perisson  
Stage director: Fletcher  
Designer: Skalicki, West  
Choreographer: Johnson

Friday, November 6, 7:00

**TRISTAN UND ISOLDE** (WAGNER)  
Same cast as October 31

Saturday, November 7, 8:00

**OTELLO** (VERDI)  
Kabaivanska, Nadler/McCracken, Paskalis,  
Davies, Grant, Hall-Sundquist, Nolen,  
Lombardi  
Conductor: Gregor  
Production: Ponnelle  
Designer: Ponnelle, West

Sunday, November 8, 2:00

**FAUST** (GOUNOD)  
Same cast as November 3

Tuesday, November 10, 7:00

**TRISTAN UND ISOLDE** (WAGNER)  
Same cast as October 31

Wednesday, November 11, 8:00

**OTELLO** (VERDI)  
Same cast as November 7

Friday, November 13, 8:00

**FAUST** (GOUNOD)  
Same cast as November 3

Saturday, November 14, 8:00

**THE RAKE'S PROGRESS** (STRAVINSKY)  
Marsh, Anderson, Petersen/Dempsey,  
Dooley, Grant, Fried, Lombardi  
Conductor: Schuller  
Production: P. Hager  
Designer: Skalicki, Colangelo

Sunday, November 15, 1:00

**TRISTAN UND ISOLDE** (WAGNER)  
Same cast as October 31

Tuesday, November 17, 8:00

**THE RAKE'S PROGRESS** (STRAVINSKY)  
Same cast as November 14

Wednesday, November 18, 7:00

**TRISTAN UND ISOLDE** (WAGNER)  
Last performance this season  
Same cast as October 31

Friday, November 20, 8:00

**OTELLO** (VERDI)  
Same cast as November 7

Saturday, November 21, 8:00

**FAUST** (GOUNOD)  
Same cast as November 3

Sunday, November 22, 2:00

**TOSCA** (PUCCINI)  
Kirsten/Domingo, Quilico, Monk, Grant,  
Fried, Nolen, Lombardi  
Conductor: Levine  
Stage director: Farruggio

Tuesday, November 24, 8:00

**OTELLO** (VERDI)  
Same cast as November 7

Wednesday, November 25, 8:00

**FAUST** (GOUNOD)  
Last performance this season  
Same cast as November 3

Thursday, November 26, 8:00

Special Thanksgiving Day Performance  
Last performance this season  
**CARMEN** (BIZET)  
Davidson, Marsh, Matsumoto, Nadler/  
Domingo, Monk, Grant, Nolen, Manton,  
Fried  
Conductor: Perisson  
Stage director: Farruggio  
Designer: Bay  
Choreographer: Carvajal

Friday, November 27, 8:00

**THE RAKE'S PROGRESS** (STRAVINSKY)  
Last performance this season  
Same cast as November 14

Saturday, November 28, 8:00

In celebration of Dorothy Kirsten's 25th  
Anniversary with the San Francisco Opera  
**TOSCA** (PUCCINI)  
Last performance this season  
Same cast as November 22

Sunday, November 29, 2:00

**OTELLO** (VERDI)  
Last performance of the season  
Same cast as November 7

## RELAX. SUMMER'S A LOT CLOSER THAN YOU THINK.

It isn't months away. Only miles away. And in a few hours you can stretch out and smile back at the sunshine. Swim. Play tennis. Golf. Try our spectacular Aerial Tramway. All in our invigorating, fresh desert air. □ It's easy to fly here, with more flights than ever. Easy to drive here. Easy to stay here. For reservations, call "Sunny" in San Francisco at (415) 982-0220. Preview it. Send for our free Palm Springs Vacation Folder. Just write to Dept. 21



### Palm Springs

Convention and Visitors Bureau  
Palm Springs, California 92262

Brand new for  
after theater



# B AND B Stinger




Produced by  
**WILE**  
NEW YORK 86 proof



Eastern Airlines is a billion dollars worth of aircraft,  
one of the most sophisticated maintenance systems in the  
world, the largest real-time airline reservations computer in  
existence, 1400 take-offs and landings every day;  
acres of terminals, hangars, warehouses and buildings;  
32,000 of the most dedicated people in aviation,

and one dream:  
to make flying as natural for you  
as it is for him.



 **EASTERN** The Wings of Man.



# FOL-DE-ROL 1970

An all-new variety show  
for the whole family

This year the San Francisco Opera Guild's Fol-de-Rol goes variety — with informality the order of the day. You'll hear stars of the San Francisco Opera, a great dance band and Turk Murphy's jazz band. Ballet dancers, a pipe band and country and western singers will be on hand, too. It all adds up to an evening of fine entertainment for every member of your family. And all proceeds go to help **your** opera.

Tickets from \$1.50 — on sale at  
Opera House and Sherman Clay Box Offices  
also most Bay Area ticket agencies

**FOL-DE-ROL 1970**  
**SUNDAY, NOVEMBER 15**

**CIVIC AUDITORIUM**

Dancing 5:30 to 7:00 p.m.  
Show begins at 7:00 p.m. sharp

## WAR MEMORIAL OPERA HOUSE

(Owned and operated by the City and County of San Francisco through the Board of Trustees of the War Memorial)

HONORABLE JOSEPH L. ALIOTO  
Mayor, City and County of San Francisco

### TRUSTEES

FRED CAMPAGNOLI  
*President*

GREGORY A. HARRISON  
*Vice President*

MRS. JOSEPH L. ALIOTO

SAM K. HARRISON

PHILIP S. BOONE

MOSES LASKY

MRS. JOSEPH D. CUNEO

WILSON MEYER

GEORGE T. DAVIS

MRS. MADELEINE H. RUSSELL

PRENTIS COBB HALE

JOSEPH J. ALLEN  
*Managing Director*

DONALD J. MICHALSKE  
*Executive Secretary and  
Assistant Managing Director*



sammy davis jr presents  
**ella and DUKE**  
november 9-21  
george rhodes  
and his orchestra  
reservations  
(213) 386-5522

**GROVE** no cover charge  
3400 WILSHIRE BLVD. (213) 387-7011

**AMBASSADOR  
HOTEL**

**MAYFAIR TRAVEL  
SERVICE, INC.**  
*The Originators of Opera Tours*

*present*

**18th Annual  
EUROPEAN OPERA TOUR**

**New York/Paris/Milan  
Rome/Naples/Munich  
Vienna**

Departing New York,  
March 17, 1971

3 weeks \$1168

2 week tour available

- 12 performances including the March 16th Metropolitan Opera performance.
- 1 performance Spanish Riding School, Vienna.
- Complete freedom (independence) between performances.

For further information contact:

**Tour Escort RAMONA GRIM**  
720 La Para  
Palo Alto, Ca. 94306  
326-0588



AFTERWARDS..



**TRADER VIC'S**

20 COSMO PLACE 776-2232

OPEN AGAIN



L'ORANGERIE

Holiday Magazine Award Since 1965

419 O'Farrell

776-3600

San Francisco

DINNER EVERY NIGHT

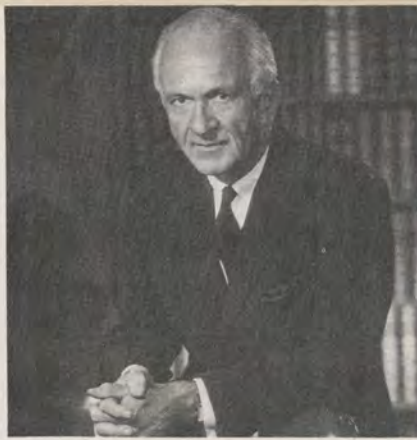
مراكش

Marrakech  
Restaurant

"Moroccan dining without compromise"

417 O'FARRELL  
776-6717

SAN FRANCISCO



# SAN FRANCISCO OPERA

Our Opera has a reputation for excellence which assures its status among the finest opera companies of the world. Contributing to this reputation are an imaginative approach to repertoire, the introduction of important foreign and American singers, conductors, directors and designers to our audiences and the development of young artists through the affiliated operations of the San Francisco Opera Auditions, the Merola Opera Program, Western Opera Theater and Spring Opera Theater. All of the ingredients are to be found in the present season.

It is extremely satisfying to Kurt Herbert Adler and his staff to be able to report that we entered the 1970 season with a fifteen per cent increase in subscribers, the largest number in our history. Not only have previous subscribers renewed at the highest rate ever, but we are also welcoming over 3500 new subscribers, more than in any past season. And single performance ticket advance sales have been extremely heavy, too. Proof indeed of the continued vitality of opera in the Bay Area.

We are deeply indebted to Crocker-Citizens National Bank for its grant of \$41,200 for the new production of *Così fan tutte*. Part of the Bank's celebration of its one-hundredth anniversary, this marks the first time we have received a new production from a local corporation. Especial thanks should be given to R. Gwin Follis for his efforts to obtain this important grant. We hope that this form of close involvement by business with the arts will become increasingly common in the years ahead.

Unlike so many products, opera performances cannot utilize the techniques of mass production and automation to counteract the rising expenses of labor and materials. So opera production costs continue to spiral upward. Every effort is made by the Association to establish the lowest possible operating budget, consistent with our ability to present opera of the highest standards. While our box-office income covers a higher percentage of costs than is the case for other opera companies, the gap between costs and income must be bridged by our annual Fund Drive. The 1969/70 Fund Drive raised \$580,000, the largest amount in our history, and we are particularly grateful to Robert A. Hornby, Assistant to the President, and Co-Chairmen R. Gwin Follis and Marco F. Hellman for their untiring efforts and to the many thousands of concerned individuals whose generosity has made it possible for us to continue.

However, we are somewhat in the position of the character in *Through the Looking Glass* who had to run faster and faster just to stay in the same place. The 1970/71 Fund Drive target has had to be set even higher than last year in order for us just to maintain our present levels. Our immediate problems are further complicated by the fact that the recent decline in the stock market hit especially hard the family foundations and trusts from which we have in the past received considerable support. This means that we must look to individual and corporate contributors to a greater degree than before for the funds we require. As for the future, it has become more and more evident that the only solution to the mounting financial crisis faced by the San Francisco Opera, in common with all other major performing arts institutions in America, is through substantial increases in the amount of assistance from traditional as well as new sources. Our hopes for increased government funding depend upon our ability to demonstrate widespread financial support from the community.

San Francisco is known the world over as an "opera city". If it is to remain so we must have the personal involvement of each person who loves opera. The maintenance and continued growth of the San Francisco Opera require such involvement. One cannot exist without the other. The Opera cannot exist without you.

Prentis Cobb Hale

PRENTIS COBB HALE

President, San Francisco Opera Association





# Birgit Nilsson

**LONDON**  
RECORDS

*The Royal Family of Opera*

The incomparable Swedish soprano is the first singer in history to have recorded the role of Brünnhilde complete.

Among Miss Nilsson's many fine recordings for London are:

DIE WALKÜRE  
Stereo OSA-1509

SIEGFRIED  
Stereo OSA-1508

GOTTERDÄMMERUNG  
Stereo OSA-1604

Strauss: ELEKTRA  
with Regina Resnik, Marie Collier, Tom Krause, Gerhard Stolze-Georg Solti  
Stereo OSA-1269

Puccini: TOSCA  
with Franco Corelli, Dietrich Fischer-Dieskau-Lorin Maazel  
Stereo OSA-1267



# Placido Domingo

**LONDON**  
RECORDS

*The Royal Family of Opera*

## OPERATIC RECITAL

Arias from: *Fedora, Lucia di Lammermoor, Aida, Il Trovatore, Andrea Chénier, Cavalleria Rusticana, Pagliacci, Un Ballo In Maschera, La Gioconda, Adriana Lecouvreur and Turandot.* Orchestra of The Deutschen Oper Berlin — Nello Santi

Stereo OS 26080

Photo: Fayer



# James McCracken

**LONDON**  
RECORDS

*The Royal Family of Opera*

## OPERATIC ARIAS

from *Il Trovatore, Faust, La Forza del Destino, Die Meistersinger, La Fanciulla del West, Der Freischütz, Pagliacci, Tannhäuser, Otello*  
OS-25948

## Beethoven: FIDELIO

with Birgit Nilsson, Tom Krause, Hermann Prey, Graziella Sciutti, Kurt Boehme — The Vienna Philharmonic Orchestra — Lorin Maazel  
OSA-1259

## OPERATIC DUETS

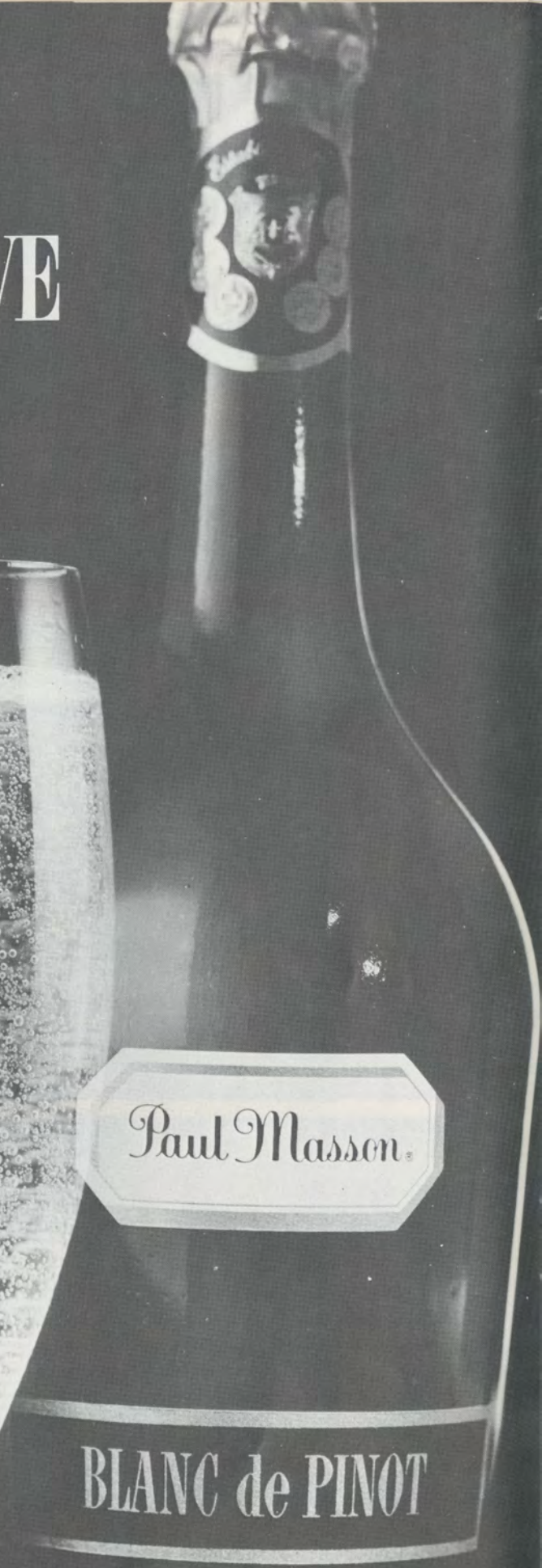
with Sandra Warfield from *Samson et Dalila, Otello, Carmen, Aida*  
OS-25899

Leoncavallo: PAGLIACCI  
with Pilar Lorengar, Robert Merrill, Tom Krause, conducted by Lamberto Gardelli  
OSA-1280

Photo: Sedge LeBlang



# AMERICA'S MOST EXPENSIVE CHAMPAGNE



CALIFORNIA BRUT CHAMPAGNE — BLANC DE PINOT

Produced and bottled by Paul Masson Vineyards, Saratoga, California



SATURDAY EVENING, NOVEMBER 14, 1970, AT 8:00

TUESDAY EVENING, NOVEMBER 17, 1970, AT 8:00

FRIDAY EVENING, NOVEMBER 27, 1970, AT 8:00

# THE RAKE'S PROGRESS

(IN ENGLISH)

*Conductor*  
GUNTHER SCHULLER

*Production*  
PAUL HAGER

*Chorus director*  
FRANCESCO PRESTIA

*Musical preparation and  
recitative accompaniment by*  
PHILIP EISENBERG

*Designers*  
WOLFRAM SKALICKI  
THOMAS COLANGELO

*Original sets and  
costumes from the  
Graz Festival*

*Opera in three acts and an epilogue by*  
IGOR STRAVINSKY

*Text by*  
W.H. AUDEN and CHESTER KALLMAN  
(By special arrangement with Boosey and Hawkes, Inc.)

<i>Tom Rakewell</i>	GREGORY DEMPSEY
<i>Anne Trulove</i>	JANE MARSH
<i>Trulove</i>	CLIFFORD GRANT
<i>Nick Shadow</i>	WILLIAM DOOLEY
<i>Mother Goose</i>	DONNA PETERSEN
<i>Baba the Turk</i>	SYLVIA ANDERSON
<i>Sellem</i>	HOWARD FRIED
<i>Warden at Bedlam</i>	RICHARD LOMBARDI

*Soldiers, villagers, servants, attendants, etc.*

THE ACTION TAKES PLACE IN EIGHTEENTH CENTURY ENGLAND

ACT I— Scene 1—The garden of Trulove's country house  
Scene 2—The London brothel of Mother Goose  
Scene 3—The garden of Trulove's country house

ACT II— Scene 1—Rakewell's London house  
Scene 2—Street in front of Rakewell's London house  
Scene 3—Rakewell's London house  
Scene 4—Auction in the same house

ACT III— Scene 1—Graveyard  
Scene 2—Bedlam

EPILOGUE

PLEASE DO NOT INTERRUPT THE MUSIC WITH APPLAUSE

*Latecomers will not be seated while the performance is in progress*

*Performance length approximately three hours*



"The Rake's Progress".

Igor Stravinsky composed it.  
Igor Stravinsky conducts it.  
COLUMBIA recorded it.

(Definitive and complete on  
three records.)

•  
Giuseppe Verdi.  
Leonard Bernstein.  
Dietrich Fischer-Dieskau.  
The Vienna Philharmonic.  
COLUMBIA Records.

All of this talent  
brings you "Falstaff".

Such combinations don't  
happen very often.

(Complete on three  
indispensable records.)

See us now.

Special prices prevail on  
the above recordings.

BANKAMERICARD • MASTER CHARGE  
San Francisco Hours: Mon. Thurs. 'til 9  
Tues. Wed. Fri. Sat. 'til 6

**discount records inc.**



**SAN FRANCISCO**  
262 SUTTER ST. EX 7-0472

**BERKELEY**  
2309 Telegraph 849-3332

**MENLO PARK**  
915 El Camino 323-9005

**SAN JOSE**  
99C N. REDWOOD AVE.  
246-3474

## The Story of "The Rake's Progress"

ACT I—Scene 1—Anne Trulove and Tom Rakewell are in love, but Anne's father expresses doubts about Tom's future. When she leaves, the father tells Tom about a job for him in London. Tom refuses it. Left alone, Tom says he intends to rely on luck ("Since it is not by merit we rise or fall"). At the words "I wish I had money", a satanic Nick Shadow appears, disguised as a servant, and says that a forgotten uncle has left Tom a fortune. Tom and Anne are happy, but Nick says he and Tom must go to London at once. He offers himself as a business-agent, with wages to be settled in a year and a day.

Scene 2—At the brothel of Mother Goose in London, whores and revelers sing a chorus in praise of Venus and Mars. Nick introduces Tom, asking him to recite what evil he had been taught. When Tom wants to leave because it is late, Nick sets the clock back and the merriment begins again. Tom sings about his love for Anne ("Love, too frequently betrayed") but Mother Goose will have no sad songs, and she claims Tom for the night. The scene ends as all sing a merry "Lenterloo".

Scene 3—At home, Anne is longing for Tom ("Quietly night, O find him and caress"). She decides that Tom needs her more than her father does and makes up her mind to go to London ("I go to him. Love cannot falter").

ACT II—Scene 1—Tom is at breakfast in his London house, disillusioned with a life that does not allow for love ("Vary the song, O London, change!"). At the words "I wish I were happy", Nick appears and shows him a circus advertisement featuring a bearded woman, Baba the Turk. He suggests Tom marry her and forget crippling things like conscience and ordinary appetites ("That man alone his fate fulfills"). Tom laughs and agrees to marry Baba.

Scene 2—Anne awaits Tom outside his London house. After a procession of servants, a sedan chair is carried in and Tom steps out. He asks Anne to leave London and forget him, when Baba shows her veiled head. Tom explains that she is his wife. Anne leaves and Baba comes out, delighting the crowd by unveiling and showing her beard.

Scene 3—A sulking Tom and a chattering Baba are at breakfast in his room, which is now stuffed with all kinds of odd objects. Baba is unhappy because of Tom's lack of interest in her and she rages about, smashing china. Tom silences her by stuffing his wig into her mouth, and goes to sleep. Nick comes in with a fantastic machine that, through his manipulation, can apparently turn stones into bread. Tom wakes up with the words "I wish it were true" and says that he had a dream about a machine that could turn stone into bread. Nick shows him the machine and suggests he tell Baba about it, but Tom waves the suggestion aside.

Scene 4—An auction is about to take place in Tom's room. Anne is desperately searching for him. Sellem the auctioneer sells various objects in the room, eventually arriving at the sale of Baba. The bidding rises. He snatches the wig from her head, and she finishes the phrase that Tom had cut off months before. Baba advises Anne to reform Tom and tells the crowd that she is returning to the circus, where they will have to pay in order to see her.

ACT III—Scene 1—At a graveyard, Nick reminds Tom that a year and a day are up and he demands payment: his soul. Tom asks for mercy and Nick offers him a game of cards which will decide his fate. Tom wins three times and the enraged Nick condemns him to insanity. Darkness falls. When dawn comes up, it is spring, and Tom is insane, singing in a child-like voice and calling himself Adonis.

Scene 2—At Bedlam, the lunatic asylum, Tom still thinks he is Adonis and asks the other inmates to prepare for his wedding to Venus. The jailer brings in Anne, who has come to visit him and she addresses him as Adonis. She helps Tom to his straw pallet singing a lullaby ("Gently, little boat"). The jailer brings her father who leads Anne away. Tom wakes and, finding Anne gone, raves about Venus, failing to persuade his fellow inmates that she was ever there. Exhausted and without hope, Tom sinks back and dies.

EPILOGUE—Tom, Nick, Baba and the two Truloves address the audience with the moral of the tale:

For idle hands  
And hearts and minds  
The devil finds  
A work to do.

Libretti are on sale in the foyer.

**THE RAKE'S PROGRESS on records**

Raskin, Young, Reardon—Stravinsky, cond.—Columbia M3S—710



## Progress of a Rake by Stephanie von Buchau

the cembalo which introduces Nick Shadow.

Shadow, the devil or Tom's alter ego, moves the plot rapidly along with his recitative, "Fair lady," accompanied by pizzicato strings. Tom has inherited a vast estate and must go off to London immediately to claim it. The second scene takes place in

cavatina with string quartet, "Quietly, night." There is a pause (her father calls); she resumes the recitative and then breaks into a full-fledged cabaletta of resolution, "I go to him," which ends, as cabalettas traditionally do, on a brilliant high C.

Act II introduces Tom disgusted at the shallowness of London society



Hogarth's drawing of the brothel scene

Stravinsky's *The Rake's Progress* opens with a very English sound: a ceremonial brass flourish which dissolves into the woodwind introduction to Anne and Tom's duet, "How sweet." At Anne's exit Tom sings an extended recitative (accompanied) and a short arietta: "Since it is not by merit," which states his philosophy simply: Fortune holds all the cards so why struggle? At the end of the song he makes his first wish, "I wish I had money." He will have three wishes, each spoken, and a final denial of wishes. Each of the first three (for money, happiness and the power to save the world) is immediately followed by an evil little arpeggio on

Mother Goose's brothel (Auden's use of the 18th century conceit of meaningful names is delightful). A large chorus of whores and roaring boys is followed by Shadow's catechism of his aspiring pupil in vice. Tom sings his C-sharp minor cavatina, "Love too frequently" which has a clarinet accompaniment reminiscent of Stravinsky's ballet, *Le Baiser de la Fée*.

The third scene, Anne's extended solo, is a pure representation of a classical operatic form, the *scena*. Woodwind trills summon up a moonlight night. Anne begins with an accompanied recitative, "No word from Tom." This is followed by a slow

and distressed that his "progress" is not bringing him joy. It is important to note here (for those who feel that Shadow's magic in Act III robs Tom of free will) that no one is forcing Tom to pursue the life of a Rake. He sings plaintively, "Who's honest, chaste or kind? One, only one and of her I dare not think." Why not? He makes his second wish, "I wish I were happy;" the cembalo flourishes and Shadow appears as usual to entice Tom into marrying Baba the Turk. A vigorous duet for the two men closes the scene.

The middle scene of Act II is an excellent example of how Stravinsky strings together the classical forms. It



# ACTION

MRS. HARRY CAMP, JR.  
MRS. EDMOND C. WARD  
General Co-Chairmen

## AREA CHAPTERS

MRS. FREDERICK O. KOENIG  
San Francisco

MRS. ROBERT HILL  
North Peninsula

MRS. JOHN RICHARDS  
MRS. JONATHAN GIFFORD  
South Peninsula

MRS. HEIKO T. deMAN  
MRS. ALLAN FLEISCHER  
East Bay

MRS. CARL BRIMMEKAMP  
Marin County

MRS. JOHN DUNN  
Napa

MRS. DONALD YOUNGDAHL  
Sonoma

## Members-at-Large

MRS. BALDHARD G. FALK  
MRS. JAMES HOWELL  
MRS. ROBERT M. STAFFORD  
MRS. REUBEN STUTCH

Opera ACTION was created in 1967 to increase awareness of the San Francisco Opera, to stimulate interest in opera in general, and to actively promote ticket sales. Not a fund-raising organization, Opera ACTION works in close cooperation with the publicity department, enabling it to greatly extend its reach and activity. Those interested in actively working on behalf of the San Francisco Opera should contact their local chairman.

## Opera House Museum

Open free-of-charge during all performances in the south foyer, box level. A new exhibit of photographs, costumes, scenic designs, programs and other memorabilia connected with opera in San Francisco both past and present.

The collection includes material in the possession of the San Francisco Opera as well as several donations on loan from private individuals. It has been prepared under the supervision of David Crocker, with materials contributed by Joseph Magnin, Inc. The museum is sponsored by the Board of Trustees of the War Memorial, with Ralph J. A. Stern as curator. Mrs. Madelaine Haas Russell also represents the Board. Donations of interesting and valuable historical interest are gratefully received. Persons wishing to contribute items should contact Margaret Norton at 861-4008.

opens with an arioso for Anne introduced by some *Don Giovanni*-like measures which are interrupted by a purely Stravinskian trumpet solo (reminiscent of the cornet part in *Histoire du Soldat*). The aria is followed by a duet for Tom and Anne in which Tom again "protests too much" about his attachment to London society. This is followed by an affecting trio in which Tom and Anne sing of their lost love while Baba the Turk, Tom's new wife, sticks her head out of the curtains of her sedan chair to interject acid comments. When Anne leaves, a stately dance, like a minuet of death, proceeds Baba's entrance to Tom's house—the heavy string and tympani giving it a Handelian note of pomp.

The final scene of the second act gives Baba a chance to rattle on charmingly and then literally bring down the house by smashing everything in sight when Tom ignores her. Tom dreams of a machine that turns stones to bread and utters his third wish, "I wish it were true," followed again by the now inevitable cembalo arpeggio. The act ends with an energetic duet for Shadow and Tom during which Shadow addresses the audience directly.

By the opening of Act III Tom has lost everything and Sellem, the auctioneer, is busily involved, in a rapid scherzo, in auctioning off Tom's possessions. Baba gives Anne some compassionate advice on how to rescue Tom from sure destruction and exits with the imperious line, "Out of my way, the next time you see Baba you shall pay!"

The second scene is in the churchyard, reminding us of the connection with Mozart, for it is in the churchyard that Don Giovanni asks the Commendatore's statue to come to dinner. The strings, minus the basses, grind out grotesque, slightly out of tune measures, almost in the manner of some of Mahler's gypsy fiddles, etched in with a sharp attack at each phrase. Tom and Shadow converse, Tom's line low and melancholy, Shadow's high and nervous. The bell strikes ominously, exactly as it does

in a dozen early Verdi, Donizetti and Rossini operas. Nick and Tom play cards for Tom's soul, accompanied only by the eerie cembalo. At Tom's line, "O God, what hopes have I?" there is a sudden, startling rush in the orchestra, but it dies away again and the insistent cembalo re-enters. Tom, at the end of his rope, makes his last wish: "I wish for nothing else." This absolves him and he wins the game but Shadow, with a magic gesture, strikes him down with insanity.

The final scene, in Bedlam, is the most moving in the opera. It opens with some very un-Mozartian intervals accompanied by pizzicato strings. Tom, believing he is Adonis, calls for Venus in a disembodied head tone suggesting madness. Anne enters and, pretending she is Venus, sings a duet with Tom in which there is even more melisma and less one-word-to-one-note setting than in the rest of the opera. (Melisma is the setting of a single syllable to a group of notes on different pitches. Its use is one of the main stylistic differences between traditional opera, which used melisma extensively, and modern opera, which hardly uses it at all.)

Tom sleeps and Anne sings a three-verse lullaby accompanied only by flutes. Then her father takes her away to a dirge-like duet. Tom wakes, loses strength and dies with a slow trill on the words "Venus loved." The sombre ending of the mourning chorus breaks suddenly into a bright A major as the house lights come up. The five main characters (Tom, Anne, Shadow, Baba and Trulove) come onstage minus their wigs (Baba without her beard) and sing their *Don Giovanni*-like Epilogue. To tunes of a jaunty ditty they each give their moral, ending together: "For idle hands and hearts and minds, the devil finds a work to do."

The Devil has had short shrift with Stravinsky.

*Stephanie von Buchau has been Music and Dance Editor of SAN FRANCISCO Magazine since 1964. She has also published articles in MUSIC AND MUSICIANS, OPERA NEWS, MUSICAL AMERICA and OPERA.*



# "Merely the Greatest Sedan in the World."

—Road & Track



WHEN we received our first Mercedes-Benz 300SEL 6.3, we felt it was probably the *finest* car we had ever driven. Of course we thought our opinion might be a little biased.

But then *Road & Track* called it "Merely the Greatest Sedan in the World." And the reviews from other automotive experts were equally flattering. *Motor Trend* called the 6.3 "the safest, fastest and most comfortable 4-door sedan made today." Tom McCahill tested the 6.3 for *Mechanix Illustrated*, and termed it the "world's best car."

But don't take our word for it. Or their word. Stop in and let us give you a test drive. Take the 6.3 through some corners. See

if you don't concur with the experts that it "handles better than most sports cars."

Punch the accelerator. We've found that the 6.3 liter, overhead cam, fuel injected V-8 propels the 6.3 from 0 to 60 mph in about 7 seconds. Enough to muscle the stripes off most so called "supercars."

Hit the brakes. *Road & Track* calls the deceleration rate from the four massive ventilated discs "tremendous."

And while you're on that test drive, you'll notice something else that makes the 6.3 so unique. It performs its heroics while keeping its cool as a true luxury car.

In this age of "specialty" cars, you'll appreciate one that excels in *everything*.



## AUTOHAUS BRUGGER, INC.

Exclusive Mercedes-Benz Sales, Leasing, Service

Redwood City  
201 Main Street 364-0300

Palo Alto  
525 Alma Street 325-6181



# Help yourself. And your Opera.

## Join the San Francisco Opera Guild.

For more than 40 years the San Francisco Opera Guild has been helping your Opera to grow and develop. And at the same time the Guild has helped many thousands of opera lovers to increase their enjoyment of their favorite art form.

The most important work of the Guild has been the presentation of student matinees, at extremely low prices, to elementary and high school students, many of whom otherwise never experience the magic of live opera. This season five student matinees of *Carmen* will be sponsored by the Guild. In addition, through the annual Fol-de-Rol and other fund-raising events, the Guild has contributed more than \$335,000 to the production fund of the San Francisco Opera.

Membership in the Guild brings you many benefits: an invitation for two to an opera rehearsal; advance reservations for opera subscriptions and tickets; attendance at an opera preview lecture; backstage tours of the Opera House; invitations to special social events for opera artists and Guild members; special reduced rates for subscriptions to *Opera News* (Supporting, Contributing and Donor members receive it free).

Join the Guild today. You will be doing yourself, *and* your San Francisco Opera, a favor.

### SAN FRANCISCO OPERA GUILD

WAR MEMORIAL OPERA HOUSE • SAN FRANCISCO, CALIF. 94102 • TEL. 863-2524

REGULAR MEMBERSHIP DUES — 1971 SEASON \$15.00

Subscription to *Opera News* (Members only) 1971-72 \$7.00

SUPPORTING Membership Dues\* \$30.00

CONTRIBUTING Membership Dues\* \$50.00

DONOR Membership Dues\* \$100.00 and more

\* Memberships include "Opera News" and an invitation to the second rehearsal as additional benefits of membership.

*Deductible from income taxes*

Miss  
Mr.

Mrs.  
M/M

Name (as you wish your membership listed)

Address

Zip Code

Telephone

YOUR MEMBERSHIP CARD WILL BE YOUR RECEIPT



# SPECIAL EVENTS

## Opera Previews

Presented by the Junior League  
of San Francisco, Inc.  
Curran Theater, 11:00 a.m.  
Public invited free of charge

September 16  
SIEGFRIED  
Speaker: Speight Jenkins

October 9  
NABUCCO  
Speaker: Giorgio Tozzi

October 15  
COSI FAN TUTTE  
Speaker: Robert Darling

November 6  
OTELLO  
Speaker: Dr. Jan Popper

November 13  
THE RAKE'S PROGRESS  
Speaker: Gunther Schuller

---

Presented by Opera ACTION  
South Peninsula Chapter  
Oak Creek Club  
Palo Alto, 10:00 a.m.

September 17  
SIEGFRIED  
Speaker: Speight Jenkins

September 24  
FALSTAFF  
Speaker: Dr. Jan Popper

October 1  
NABUCCO  
Speaker: Dr. Stanley Easter

October 15  
OTELLO  
Speaker: John Rockwell

November 5  
THE RAKE'S PROGRESS  
Speaker: Miss Marie Gibson

---

Presented by Opera ACTION  
Marin County Chapter  
Marin Art & Garden Center  
Ross, 8:30 p.m.

September 17  
SIEGFRIED  
Speaker: Speight Jenkins

October 8  
COSI FAN TUTTE  
Speaker: Dr. Jan Popper

October 22  
FAUST  
Speaker: James H. Schwabacher, Jr.

November 5  
OTELLO  
Speaker: Miss Stephanie von Buchau

---

Presented by the Jewish Community Center  
3200 California St., San Francisco 8:30 p.m.

September 21  
"A Half Century of the  
San Francisco Opera"  
Speaker: Arthur Bloomfield

October 12  
"Mozart and Stravinsky"  
Speaker: Robert Commanday

---

Presented by the San Jose  
Opera Guild  
Rosicrucian Museum Auditorium  
San Jose, 10:00 a.m.

September 18  
SIEGFRIED  
Speaker: Speight Jenkins

September 25  
FALSTAFF  
Speaker: Dr. Jan Popper

October 2  
NABUCCO  
Speaker: Dr. Stanley Easter

October 9  
COSI FAN TUTTE  
Speaker: John Tyers

October 16  
OTELLO  
Speaker: John Rockwell

October 23  
TRISTAN UND ISOLDE  
Speaker: to be announced

---

## SAN FRANCISCO OPERA SACRAMENTO PERFORMANCE

November 16, 8:00 p.m.  
Memorial Auditorium  
CARMEN (Bizet)  
in French  
Presented by the Sacramento Opera Guild

---

## THE SAN FRANCISCO BOYS CHORUS

*Serving the San Francisco Opera and  
the youth of the Bay Area since 1948*

San Francisco Boys Chorus  
333 Franklin Street  
San Francisco, California 94102  
431-5450

---

## Opera Guild Student Matinees

CARMEN (in French) Bizet

Tuesday, October 13, at 1:00

Wednesday, October 21, at 1:00

Friday, November 13, at 1:00

Friday, November 20, at 1:00

Tuesday, November 24, at 1:00

Commentator: Alexander Fried

## PINOT CHARDONNAY

An elegant dry white dinner wine  
from the cellars of The Christian  
Brothers.



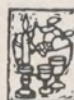
Pinot Chardonnay is the  
grape that produces the  
white burgundies of France.  
Our plantings of this rare vine  
thrive in sunny vineyards near our  
Monastery. While the crop is  
small, the wine it yields is truly  
memorable. When this grape was  
transplanted to California's fa-  
mous Napa Valley, it gained new  
characteristics which I believe you  
will find quite unique in a wine.



One of the unusual qualities  
of our Pinot Chardonnay is  
that it seems to contradict  
traditional wine rules. For unlike  
most white wines which reach  
their peak during their early years,  
the noble character of this fine  
Pinot Chardonnay continues to  
develop in the bottle.



It is ready to serve when it  
leaves our aging cellars here  
—but still you may confi-  
dently put it down in your own  
cellars to enhance it even further.



The wine has a superbly fla-  
vorful mellowness with an  
exquisite, subtle bouquet. It  
is a delightful accompaniment to  
lighter meats, fish or lobster.



Priced at about \$3.00 a  
bottle, the supply of Pinot  
Chardonnay is necessarily  
limited. Should your wine mer-  
chant fail to have it, you may  
write to me.

*Brother Timothy F.S.C.*

Brother Timothy, F. S. C., Cellarmaster  
The Christian Brothers Winery  
Napa Valley, California

Worldwide Distributors: Fromm and Sichel, Inc.,  
San Francisco, California





PHOTOGRAPH BY HERSHEL SINAY/SETTING: PASADENA SHOWCASE OF INTERIOR DESIGN

# Collector's Item.

The person who enjoys music and theatre is very apt to be a collector—of PERFORMING ARTS. He'll take his copy home from the theatre—to review the program information that helped to make his theatregoing a pleasure. To read the feature articles and share them with his family.

For the collector, we offer hard-cover binders, custom designed to hold twelve full issues—for a personal record of performances to remember, a collection of authoritative articles on the performing arts. Yours for only six dollars, including sales tax, handling, and mailing. Also available in a deluxe version—gold stamped, with the sumptuous look of leather. The perfect gift for someone special—or a handsome addition to your own library, at ten dollars.



Please send me \_\_\_\_\_ standard binders, at six dollars each;  
 \_\_\_\_\_ deluxe binders, at ten dollars each.

Enclosed is my check for \$ \_\_\_\_\_, made payable to  
 PERFORMING ARTS.

NAME \_\_\_\_\_

ADDRESS \_\_\_\_\_

CITY \_\_\_\_\_ STATE \_\_\_\_\_ ZIP \_\_\_\_\_

Please mail your order with your check to: PERFORMING ARTS,  
 147 S. Robertson Blvd., Beverly Hills, Calif. 90211



# WHO'S WHO



**SYLVIA ANDERSON** returns to San Francisco for her fourth season. Her debut role in 1967 was that of Octavian in *Der Rosenkavalier*, with which she scored a great success. That same year she also sang Siebel in *Faust*, a role she will re-create this season. Born in Denver, Colorado, Miss Anderson graduated from the Eastman School of Music in Rochester, N.Y. She sang with the Central City and Santa Fe operas before going to Europe on a Fulbright scholarship. Currently a leading mezzo-soprano of the Frankfurt Opera, Miss Anderson makes frequent guest appearances in most of the major European opera houses. Last summer she sang at the Bayreuth Festival for the first time.



**JUDITH BECKMAN** is making her first professional appearance in America as Marguerite in *Faust*. She was heard on this stage once before: as a winner of the 1961 San Francisco Opera Auditions. Miss Beckman's musical studies included operatic training at the UCLA Opera Workshop with Dr. Jan Popper and at the Music Academy of the West in Santa Barbara with Mme. Lotte Lehmann. Her studies continued in Hamburg, where she went on a Fulbright scholarship. Her formal debut took place in 1962 in the Braunschweig production of *Così fan tutte*. She was soon engaged by the Düsseldorf and Hamburg opera companies, where she is still active. She has also appeared as guest artist in the opera houses of Amsterdam, Brussels, Vienna, Berlin and Munich. Steeped in music from early childhood (her father was a baritone and her mother a pianist), she is married to opera coach and conductor Irving Beckman, who is a member of the San Francisco Opera musical staff this season.



**SONA CERVENA**, returning here for her eighth consecutive season, is well known to San Francisco operagoers through her many character portrayals. The striking mezzo-soprano from Czechoslovakia started her career as an actress, but music soon took

first place and she was engaged by the Brno Opera House. A Prague recital led to a contract with the Berlin Deutsche Oper and a great number of appearances in most major European and American cities. One of her recent successes included the leading role in the world premiere of Kelemen's *Belagerungszustand* (State of Siege), given in Frankfurt.



**DOMINIC COSSA** started his career in psychology. After receiving his Masters degree, he took up formal vocal studies and was first heard as Sharpless in 1961 in the New York City Opera production of *Madama Butterfly*. By now a leading baritone of that company and a frequent guest at the Metropolitan Opera, he has added a large number of roles to his repertoire, including the elder Germont, Rigoletto and Valentin in *Faust*. It is in the latter role that he is making his San Francisco Opera debut. He was previously heard in San Francisco in the Spring Opera productions of *The Pearl Fishers*, *Cavalleria Rusticana* and *I Pagliacci*.



**JOY DAVIDSON** will be heard for the first time with the San Francisco Opera in a special performance of *Carmen* on November 26. She is, however, known to Bay Area audiences for her portrayal of the Secretary in Spring Opera's 1969 production of *The Consul*. *Carmen* is the role which has taken her around the world and made her a first prize winner of the 1967 International Young Opera Singers Contest in Sofia. Miss Davidson was a member of the Metropolitan Opera National Company with which she toured for two seasons and sang *Carmen* some 45 times. Last year, she attracted nationwide attention as Sister Jeanne in the American premiere of Penderecki's *The Devils of Loudoun* (Santa Fe) and as Konchakovna in *Prince Igor* (New York City Opera).



**RYLAND DAVIES** joins the impressive group of Welsh singers currently on the roster of the San Francisco Opera. This fall, during the season marking his American debut, he will be heard as Ferrando in *Così fan tutte*, Cassio in *Otello* and the Sailor's Voice in *Tristan und Isolde*. Born in Cwm Ebbw Vale, Davies was educated at the Royal Manchester College of Music. While still a student, he won several prizes, including the Ricordi Prize and the Im-

perial League of Opera Prize. His principal role at Glyndebourne in 1968 was that of Belmonte in *Die Entführung aus dem Serail*. By 1969, he performed with every British opera company and with every major orchestra. His appearances this year included Cassio in the Salzburg Festival production of *Otello* under von Karajan.



**GREGORY DEMPSEY** started singing at the age of ten. At the age of sixteen, he took up formal vocal studies and trained as a baritone, but by the time he reached twenty he became a tenor. He was soon appearing in major roles at the National Opera in his native Melbourne. In 1962, he was offered a contract with London's Sadler's Wells and has been singing there ever since. In 1964, he sang the role of Gregor in the British premiere of *The Makropulos Case*. He repeated the role in the American premiere of the same opera in San Francisco (1966), which also marked his American debut. During the past year, he appeared as Erik in *The Flying Dutchman*, Don Jose in *Carmen*, David in *Die Meistersinger* as well as in title roles of Britten's *Albert Herring* and *Peter Grimes*.



**PLACIDO DOMINGO** is one of the most highly acclaimed tenors of the world. He is extremely active in America, as well as in Marseilles, Hamburg, Berlin, Vienna, and at Milan's La Scala. Born in Madrid, Domingo was brought up in Mexico and received most of his musical training there. His debut as Alfredo in *La Traviata* took place when he was twenty. He then moved to Tel-Aviv, where he sang for two and a half years, with guest appearances throughout Europe. Upon returning to America, he joined the New York City Opera for performances as Don Jose and Pinkerton and won international fame for his portrayal of the title role in Ginastera's *Don Rodrigo*. During the last few years, he has also sung a number of roles with the Metropolitan Opera. In 1971, he will make his first appearance at London's Covent Garden—as Cavaradossi in *Tosca*.



**WILLIAM DOOLEY** returns to his native California as one of the leading baritones on the international circuit. Born in Modesto, he studied music at the Eastman School of Music and as a Fulbright scholar in Munich. Following his Heidelberg debut



FOR BEFORE  
AND AFTER THEATRE  
DINING ...

Phil Lehr's

ORIGINAL PAY-BY-OUNCE



WORLD FAMOUS  
FOR STEAKS

Carriage Entrance From  
Taylor & Ellis Parking Lot  
DAILY 5-12 SUN. 4-11

673-6800

**PARK ONCE** for dinner and show!



ELEGANT DINING  
San Francisco • 397-5969

(1957), he was engaged by the Berlin Deutsche Oper, where he is still appearing. For the past seven years, he has sung regularly with the Metropolitan Opera. Dooley has a large and varied repertoire and during the last year alone was heard in *Elektra*, Henze's *Die Bassariden* (composed for and dedicated to him), *The Flying Dutchman*, *Fidelio*, the *Ring* cycle and *Tristan und Isolde* (Berlin), *Il Trovatore* (San Antonio), *Salome* (Santa Fe) and *Don Giovanni* (Copenhagen).



**MATTHEW FARRUGGIO** is now in his fifteenth season with the company. In addition to his assignments with the San Francisco Opera and Spring Opera of San Francisco, he is also extremely active with the Merola Opera Program, which is devoted to the training of young professional singers. His experience in opera is unusually broad. As a singer, he appeared in most opera houses in the United States. He also took part in Broadway shows as well as on radio and television. His studies mostly took place in Europe and included costume design, painting and sculpture. In addition to San Francisco, he has staged operas in Vancouver, Honolulu and Houston.



**ALLEN FLETCHER** is known to San Francisco operagoers for his direction of the productions of *Romeo et Juliette* and *Martha* in the inaugural season of the Spring Opera of San Francisco. Dividing his time equally between opera and drama, Fletcher has directed many operas, including world premieres of Ward's *The Crucible*, Floyd's *The Passion of Jonathan Wade* and Ellstein's *Golem*, as well as numerous dramas for various repertory companies, notably for the Shakespeare Festival in Stratford, Conn. and for San Francisco's A.C.T. Of particular note was his recent staging of *Hadrian VII* for the latter company. He will be making his San Francisco Opera directing debut with *Faust* this year.



**HOWARD FRIED** has been with the San Francisco Opera for fourteen seasons and has some 150 active opera roles in his repertoire. A resident of San Diego, Fried has sung with most of the opera companies in the United States. He appeared in a number of leading tenor roles with the New York City Opera and is also very active as a concert and oratorio performer.



**CLIFFORD GRANT**, returning to San Francisco for his fifth consecutive season, was born in Melbourne, Australia, where he was known as a concert performer. He went to England and was soon singing principal opera roles. Presently on the roster of the Sadler's Wells Opera, Grant was this year heard as Hunding in *The Valkyrie*, Don Basilio in *The Barber of Seville* and Pogner in *The Mastersingers of Nuremberg*. He sings the role of the Commendatore in a new recording of *Don Giovanni*.



**BOHUMIL GREGOR** is currently first conductor at the Hamburg Staatsoper and since 1965 has been a permanent guest conductor of the Royal Swedish Opera in Stockholm. He was born in Prague, studied there and at the age of nineteen became a double-bass player in the orchestra of the Smetana Theatre. Maestro Gregor is acclaimed for his Janacek recordings, and has conducted all of the Czech composer's works in the theatre. One of his most recent assignments included the world premiere of Kelemen's opera *Belagerungszustand* (State of Siege) with the Hamburg Opera. His American debut took place last season in the San Francisco Opera production of Janacek's *Jenufa*.



**PAUL HAGER** has staged more than seventy productions here, including the American premieres of *Troilus and Cressida*, *Medea*, *Die Frau ohne Schatten*, *Carmina Burana*, *Katerina Ismailova*, *The Makropoulos Case* and *The Visitation*. Hager started his career in Munich and in 1951 became assistant to Wieland Wagner in the inaugural postwar Bayreuth Festival season. He has staged operas at the Vienna State Opera, in Naples, Cologne, Essen, Mannheim, Nürnberg, Buenos Aires and Salzburg. His recent productions here included the complete *Ring* cycle, *Jenufa* and *The Magic Flute*.



**DAVID HALL-SUNDQUIST** started singing in a boys chorus in his native Chicago.



His early opera experience included four seasons with the Chicago Lyric Opera Chorus. Following four years in the army, during which he was tenor soloist with the U.S. Army Chorus, he joined Western Opera Theater in 1969, and was heard in several leading roles.



**RAINA KABAIVANSKA** returns to San Francisco for the role in which she made her American debut here in 1962: Desdemona in *Otello*. She is well known for her portrayal of this role throughout the world and was most recently heard in the Bolshoi Opera production of *Otello*. After studies in Sofia and Italy, the Bulgarian soprano made her professional debut at La Scala in 1960. She sang extensively in Italy, as well as in Vienna, Buenos Aires, Santiago (Chile) and Moscow. In 1966, she was awarded the Bellini Prize for performances of *Beatrice di Tenda* in Catania. That same year, she returned to San Francisco as Mistress Ford in *Falstaff*. She has also sung leading roles at the Metropolitan Opera for a number of seasons. The 1969/70 season at La Scala opened with a new production of *Ernani*, starring Miss Kabaivanska.



**DOROTHY KIRSTEN** this year celebrates the 25th anniversary of her debut with the San Francisco Opera in a special performance of *Tosca*, scheduled for November 28th. Highlights of Miss Kirsten's career include the American premieres of Poulenc's *Dialogue of the Carmelites* and Walton's *Troilus and Cressida*. Best known for her portrayals of Puccini heroines, she has scored great successes in *La Fanciulla del West*, *Madama Butterfly*, *Manon Lescaut* and *La Boheme* as well as in *La Traviata* and *Louise*. In 1962, she made history as the first American soprano to sing *Traviata*, *Tosca*, *Madama Butterfly* and *Faust* in the Soviet Union. She has played parts in a number of movies and is frequently seen on television.



**JAMES LEVINE**, the young assistant conductor of the Cleveland Orchestra, makes his San Francisco Opera debut in two special performances of *Tosca*. Levine was previously heard in San Francisco last spring when he conducted two special concerts with the San Francisco Symphony. He started studying piano at the age of four, completing his musical studies later at Juilliard. In 1965, he was appointed to the Aspen Faculty and conducted at the Aspen Music

Festival. As finalist in the Ford Foundation American Conductors project, he attracted the attention of the late George Szell, which led to his Cleveland appointment.



**RICHARD LOMBARDI** will be heard in five roles during his debut season here. He took his masters degree at UCLA and has performed with the Santa Monica Civic Opera and with Dorothy Warenauskjold's Musical Theater. Last summer, he was an apprentice artist at the Santa Fe Opera where he appeared as a soloist in the world premiere of Luciano Berio's *Opera*.



**RAYMOND MANTON** was born in New York City but has been a San Francisco resident for many years. In addition to his 29 character portrayals with the San Francisco Opera since his debut in 1955, Manton is often heard in recitals and oratorio performances throughout the Western United States. He has been a frequent guest soloist with the San Francisco Symphony Orchestra.



**JANE MARSH** returns to San Francisco Opera for her third season. Born in San Francisco and raised in Mill Valley, Miss Marsh achieved world-wide prominence as first prize winner of the 1966 Tchaikovsky competition in Moscow. In 1968, she signed a contract with the Düsseldorf Opera, where she has been singing since. Her San Francisco Opera debut took place in 1967 as Pamina in *The Magic Flute* and she returned the next season for Liu in *Turandot*. Miss Marsh frequently appears on the concert stage, most recently in Madrid performances of *Elijah* and in Mahler's Fourth Symphony with the New York Philharmonic. Her latest recordings include Beethoven's Ninth Symphony with the Boston Symphony and Mendelssohn's *Elijah* with the Philadelphia Orchestra.



**JANIS MARTIN** returns to San Francisco as Brangäne in *Tristan und Isolde*. This will

# Cutty people know.

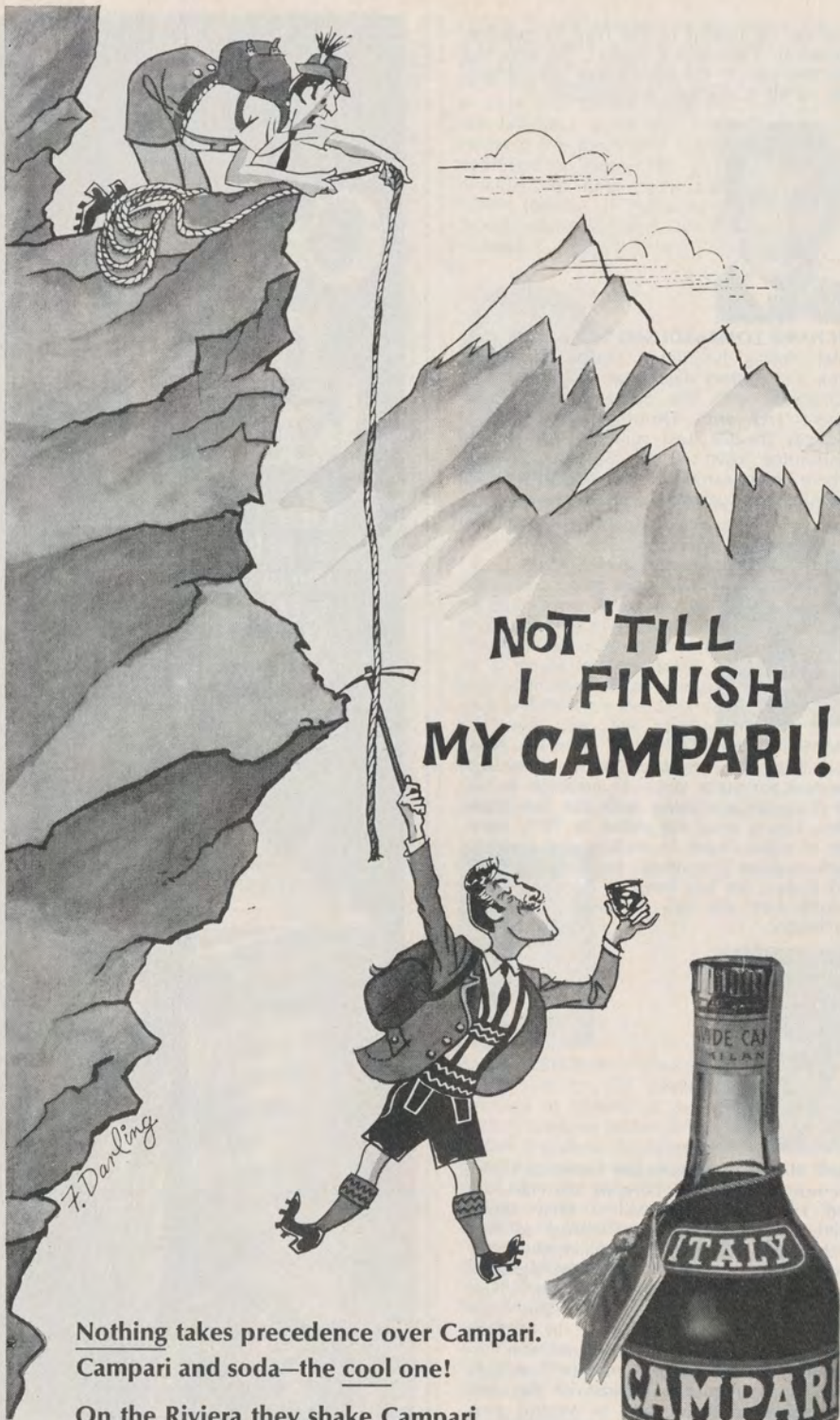
Only 1 American in 40 knows the taste of Cutty. Yet Cutty Sark is America's No. 1 Scotch. Cutty people know.



America's No. 1 Scotch.

THE BUCKINGHAM CORPORATION, IMPORTERS · NEW YORK, N.Y.  
DISTILLED AND BOTTLED IN SCOTLAND · BLENDED 86 PROOF





**NOT 'TILL  
I FINISH  
MY CAMPARI!**

**Nothing takes precedence over Campari.**  
Campari and soda—the cool one!

On the Riviera they shake Campari  
with ice, gin, Italian vermouth...  
and call it a Negroni.

Campari with Italian vermouth and  
sparkling water becomes that fabled cooler,  
the original Americano.

Versatile...delicious in so many ways,  
you could even invent  
your own "secret" Campari super-special.



Imported, Prepared and Bottled by  
AUSTIN, NICHOLS & CO., INC. New York—New York—48 Proof  
40

be her eighth season with the company. California born, Miss Martin started her career with the Merola Opera Program, which led to her San Francisco Opera debut in 1960. She sang with the Metropolitan Opera for three seasons, after winning their National Auditions. Presently a regular member of the Cologne Opera, Miss Martin has also sung in Nürnberg, Munich, Nice, Frankfurt, Hamburg, Rouen, Stuttgart, at the New York City Opera and at Milan's La Scala. She was first heard at Bayreuth in 1968, and has returned there for every season since. At this year's festival, she sang Eva in *Die Meistersinger*, Fricka in *Das Rheingold* and Gutrune in *Götterdämmerung*.



**SHIGEMI MATSUMOTO** won the San Francisco Opera Auditions in 1968 and made her San Francisco Opera debut that fall. She has been a leading soprano of Western Opera Theater for the past two seasons, and appeared with Spring Opera of San Francisco. Miss Matsumoto has sung in the last two opening night concerts of the San Francisco Pops with Arthur Fiedler, and has performed throughout the Western United States as a Community Concert artist.



**JAMES McCracken** returns to San Francisco Opera in the role which made him famous all around the world: Otello. First heard in the role in Washington, D.C. in 1960, he was soon singing it in most major opera houses of the world. He has recently recorded the opera under the direction of the late Sir John Barbirolli. McCracken was born in Gary, Indiana, studied music at Columbia University and made his professional debut at Central City, Colorado as Rodolfo in *La Boheme*. After signing a contract with the Metropolitan and singing most of the walk-on roles in the repertoire, he and his wife, mezzo-soprano Sandra Warfield, left for Europe, where intensive vocal studies alternated with appearances in a great number of prominent opera houses. McCracken has returned to the Metropolitan in a number of leading roles which brought him great public and critical acclaim. His previous roles in San Francisco include two appearances as *Otello*, Manrico in *Il Trovatore*, Radames in *Aida*, Herman in *The Queen of Spades*, Samson in *Samson et Dalila* and Canio in *I Pagliacci*.



**ALLAN MONK**, on the roster of the San



Francisco Opera for four seasons, started his career with the Merola Opera Program. The young Canadian baritone was a member of the Western Opera Theater for three seasons, where he sang a number of leading roles. His appearances with Spring Opera of San Francisco include the title role in *The Marriage of Figaro* and Capulet in *Romeo et Juliette*. He recently sang the title role in the Honolulu Opera's performances of *The Marriage of Figaro*.



**SHEILA NADLER** is returning to San Francisco for her third consecutive season, and will be heard in *Siegfried*, *Carmen*, *Salome* and *Otello*. This past winter she made her debut at the New York City Opera as Jocasta in *Oedipus Rex*. Following her San Francisco schedule, she will be heard as Ulrica in *Un Ballo in Maschera* and as Feodor in *Boris Godounov*, both in Pittsburgh. Born in New York, Miss Nadler studied at the Mannes School of Music, Hunter College, Manhattan Opera Theater and the Metropolitan Opera Studio.



**BIRGIT NILSSON**, considered the world's leading Wagnerian soprano, made her American debut in San Francisco in 1956 as Brünnhilde in *Die Walküre*. This year, she returns to sing the leading role in *Tristan und Isolde*, which represents one of the most eagerly awaited events of the 1970 opera season. Born in West Karup, Sweden, Birgit Nilsson sang as a child in school concerts and soon decided on a musical career. When she reached Stockholm, she was one of the two candidates chosen from 48 applicants to study at the Royal Academy of Music. In 1946, she got an unexpected chance to sing Agathe in *Der Freischütz*. She learned the role in three days and obtained a contract with the Stockholm Opera. From then on, her career has taken her all around the world and made her a legend in her lifetime. Miss Nilsson has made an impressive list of recordings and is the first soprano in history to record the complete *Ring* cycle. A winner of many awards and honors, she is the Swedish Court Singer and Vienna State Opera Kammersängerin.



**TIMOTHY NOLEN**, a leading baritone of Western Opera Theater for the past two

years, returns to San Francisco Opera for his third season since his debut here in 1968. He has also appeared with Spring Opera of San Francisco and in a number of recitals and concerts. Last summer, he scored a great success in the opening concert of the San Francisco Pops with Arthur Fiedler and also sang Mahler's *Songs of a Wayfarer* at the Ojai Festival under the baton of Pierre Boulez.



**KOSTAS PASKALIS**, renowned Greek baritone, will be heard in San Francisco for the first time as Iago in *Otello*. At the beginning of his musical studies, Paskalis wanted to become a conductor, and joined the Athens Opera Chorus in order to supplement his income. His unexpected break came when both the star and the understudy became ill and the 20-year old Paskalis found himself singing the title role of *Rigoletto*, thus saving the performance and becoming an overnight celebrity. As a result of his appearance in *Un Ballo in Maschera* with Nilsson and Di Stefano at the Vienna State Opera in 1958, he obtained a contract with that company, which extends to this day. He also regularly appears with the Metropolitan Opera.



**JEAN PERISSON** studied at the Paris Conservatory and at the Salzburg Mozarteum. His first permanent appointment was as conductor of the French Broadcasting Corporation in Strasbourg. He then went to Nice where he served as head of both the Opera and the Nice Philharmonic. His conducting assignments there included French premieres of *Katerina Ismailova* and *Elegy for Young Lovers*. Guest engagements have taken Perisson throughout Europe and the USSR. His American debut took place here in 1966 when he conducted *Les Troyens* and *Carmen*.



**DONNA PETERSON** has appeared with the San Francisco Opera in over 40 roles during the past 10 years and is also a regular member of the Spring Opera of San Francisco. She is extremely active with a great number of symphony orchestras throughout California and is frequently heard at music festivals. Her activities also include appearances with the Western Opera Theater. A native of Oregon, Miss Peterson now makes her home in San Francisco.

# DRAMATIC

designs  
in jewels  
by Paul de Vries



From our Estate collection, marquise-cut diamond, 3 1/4 carats, tapered baguettes, on platinum. 8000. val 5400.



Black iron earrings with diamonds, cultured pearl. 300.



California gold nugget cufflinks, 150.



California gold nugget wedding band. (Also other widths) 65.

  
*Paul de Vries*  
et Cie

982-5571

now at  
**445 Sutter St.**  
between Powell & Stockton



The gentle sun,  
the chalky soil of  
France's Côte des Blancs.

The delicate first pressing  
of only the most perfect  
white Chardonnay grapes.

Épluchage, the old world  
art of meticulously  
selecting each grape  
by hand to assure  
perfection.

This is Taittinger  
Blanc de Blancs  
Champagne.

*Incomparable*  
**TAITTINGER**  
**CHAMPAGNE**  
FROM FRANCE, BY KOBRAND, N. Y.



**JEAN-PIERRE PONNELLE** attended the Sorbonne and the Free University of Berlin. While at the Sorbonne, he studied painting with Fernand Leger and also met Hans Werner Henze, who asked him to design costumes and scenery for a ballet and his opera *The Stag King*. The success of this venture decided Ponnelle's career. By now, he is one of the most sought-after designer-directors of the opera world, and one of the few people to combine both tasks. His San Francisco Opera designing assignments included the American premiere of Orff's *The Wise Maiden* (1958), which also marked Ponnelle's American debut, *Carmina Burana* and *Die Frau ohne Schatten*. He is best remembered for his direction and design of last season's *La Cenerentola*. His recent successes included *Così fan tutte* at Salzburg with Seiji Ozawa, and the original version of *Boris Godounov* at Cologne. Ponnelle is married to the German film star Margit Saad.



**LOUIS QUILICO** studied in his native Montreal, at Rome's Santa Cecilia Conservatory, with Martial Singher at the Quebec Conservatory and at the Mannes College in New York. Between 1955 and 1958 he appeared with a number of American opera companies, including the San Francisco Opera. In 1959, he sang for the first time in Europe (Spoleto), and the next year at London's Covent Garden. The Russian conductor Melik-Pashayev was in the audience and he invited him for a tour through the USSR, which took place a year later with tremendous success. He frequently sings with the New York City Opera, most recently in the title role of the new production of *Rigoletto*. His most recent appearance with the San Francisco Opera was in 1968, when he substituted for an indisposed singer in the role of Count di Luna in *Il Trovatore*.



**GUNTHER SCHULLER**, one of the most important contemporary American composers, has in recent years devoted much of his time to conducting. Born in New York, he studied flute and horn at the Manhattan School of Music. He spent a number of years as first horn with the Metropolitan Opera Orchestra, but gave it up in 1959 in order to devote more time to composing.



Self-taught as a composer, he was soon receiving commissions from a number of major orchestras. He conducted the American premiere of his opera *The Visitation* in San Francisco in 1967, and his latest opera *The Fisherman and His Wife* was first heard in Boston this year. President of the century-old New England Conservatory of Music in Boston, Schuller was recently appointed co-director (with Seiji Ozawa) of the Tanglewood Music Festival and director of the Berkshire Music Center.



**ROGER SOYER** is making his American stage debut here as Mephistopheles. Previously he was heard in a concert performance of Berlioz' *Romeo et Juliette* in Miami. He has performed in recordings of Massenet's *Werther* and Berlioz' *L'Enfance du Christ* and *Les Troyens*. The young French bass entered the Paris Conservatory in 1958 and by 1963 had a contract with the Paris Opera. In subsequent years, he sang extensively in most major European opera houses and festivals (Aix-en-Provence, Salzburg, Wexford, Perugia). His repertoire includes the title role of *Don Giovanni*, Arkel in *Pelleas et Melisande*, Mandryka in *Arabella*, Mephisto in *La Damnation de Faust*, Don Basilio in *The Barber of Seville* and many others. He is also very active in concert and oratorio performances.



**OTMAR SUITNER** was the choice of the late Wieland Wagner to conduct the entire *Ring* cycle at Bayreuth in 1966. He led *Tannhäuser* there in 1964, *Der fliegende Holländer* in 1965, and the *Ring* again in 1967. Maestro Suitner was born in Innsbruck, studied at the Salzburg Mozarteum, and was a pupil of the late Clemens Krauss. He became music director of the Remscheid Opera in 1952, general music director of the Dresden Staatsoper in 1960, and general music director of the Berlin Staatsoper in 1964. Suitner has also conducted at La Scala, Venice, Buenos Aires and Stuttgart. He made his San Francisco Opera debut last year in performances of Wagner's *Götterdämmerung*.



**GIORGIO TOZZI** returns to San Francisco as Zaccaria in *Nabucco* and King Marke in *Tristan und Isolde*. Chicago-born Tozzi started studying voice at the age of 13, but his main attention was devoted to the study of biology. After he abandoned the latter,

(Continued on p. 50)



FRANK BOBO, THE YOUNG MAN SAMPLING THE MASH, is the first Jack Daniel stiller who's no kin to a Motlow.

Lem Tolley (the other man) learned to still whiskey from his uncle Lem Motlow, who learned all he knew from his uncle, Jack Daniel. And Mr. Tolley handed down all his knowledge to young Frank, the head stiller at Jack Daniel's today. Here in the hollow, folks say Frank has learned his lessons so well he even *looks* like a Motlow. Well, we don't know about that. But we're sure glad he makes whiskey like one.



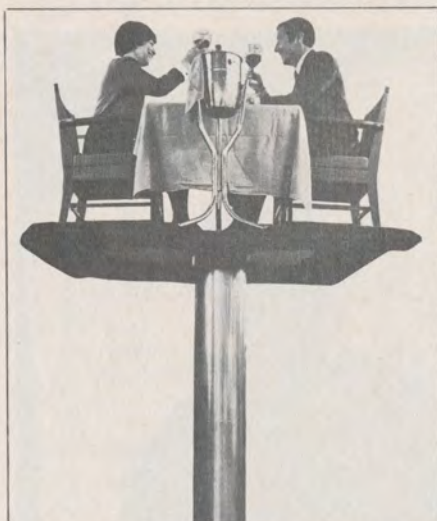
CHARCOAL  
MELLOWED

☾  
DROP

☾  
BY DROP

TENNESSEE WHISKEY • 90 PROOF BY CHOICE © 1970, Jack Daniel Distillery, Lem Motlow, Prop., Inc.  
DISTILLED AND BOTTLED BY JACK DANIEL DISTILLERY • LYNCHBURG (POP. 384), TENN.





**Spend your next night on the town  
in a Japanese service station**

Dining in the East-West Room.  
Drinking and Dancing with live  
entertainment in the Garden  
Bar. No cover. No minimum.  
Plenty of parking facilities. For  
the people who look for fun and  
an unusual evening. The  
Miyako. Come on out.

**MIYAKO HOTEL**

Post and Laguna, San Francisco  
WESTERN INTERNATIONAL HOTELS



After the theatre  
supper served  
until 1 a.m.

*Specializing in*  
*Roast Prime of Rib*  
*Beef Wellington*  
*Roast Rack of Lamb*

*Closed Sundays*

1713 Lombard Street  
Reservations: 567-8424

# SAN FRANCISCO OPERA FUND DRIVE

The generosity of the major contributors to the 1969/70 Fund Drive, listed below, is sincerely appreciated. Space does not allow us to list the many hundreds of persons whose contributions were less than \$500.00. Without their assistance grand opera as we know it in San Francisco could not continue.

## \$5,000 and Over—Patron

Mayor & Mrs. Joseph L. Alioto  
Bothin Helping Fund  
Mrs. E. E. Brownell  
Estate of Mary West Cook  
Malcolm Cravens Foundation  
Crown Zellerbach Foundation  
Foremost-McKesson Foundation, Inc.  
Edward M. and Marion F. Gauer Foundation  
Lauder Greenway  
Prentis Cobb Hale  
Mrs. L. W. Harris  
Wm. Randolph Hearst Foundation  
Mr. & Mrs. Marco F. Hellman  
Mr. & Mrs. Jay Holmes  
Miss Marion Huntington  
The William G. Irwin Charity Foundation  
Mrs. Emma Eccles Jones  
Mr. & Mrs. Edgar F. Kaiser  
Kaiser Services  
Charles E. Merrill Trust  
Mr.\* & Mrs. Robert Watt Miller  
The Roscoe and Margaret Oakes Foundation  
Pacific Gas & Electric Co.  
Spelman Prentice  
Retail Dry Goods Association of  
San Francisco  
James D. Robertson  
San Francisco Clearing House Association  
Standard Oil of California  
Whitney Warren  
Dr. & Mrs. Alejandro Zaffaroni  
The Zellerbach Family Fund

## \$1,000 to \$4,999—Benefactor

American Express Investment Management  
Co.  
American Potato Co.  
Ampex Foundation  
Bechtel Foundation  
Mr. & Mrs. K. K. Bechtel  
Mrs. G. Grace Benoist  
Mrs. Walter Bentley  
Mr. & Mrs. Joseph Blumenfeld  
Blyth & Co., Inc.  
Mr. & Mrs. John N. Breeden  
Mrs. E. R. Bridgwater  
Broadway-Hale Stores, Inc.  
Mr. & Mrs. Carleton F. Bryan  
Mr. & Mrs. John M. Bryan  
Mrs. Edith E. Bundy  
Mr. & Mrs. Harry Camp, Jr.  
Mr. & Mrs. Henry Cartan  
Coldwell, Banker & Co.  
Mrs. D. Stephen Coney  
Consolidated Freightways Foundation  
Ralph K. Davies  
Del Monte-Fremont Foundation  
Reid W. Dennis  
Di Giorgio Fruit Corporation  
Mr. & Mrs. Bruce Dohrmann

Mr. & Mrs. Dewey Donnell  
S. B. Eggertsen Foundation  
Eldorado Foundation  
The Emporium-Capwell Co.  
Mr. & Mrs. Lennart G. Erickson  
Fibreboard Foundation  
Mr. & Mrs. Charles Devoe Field  
Mrs. Herbert Fleishhacker  
Mr. & Mrs. Mortimer Fleishhacker  
The Alfred Fromm Fund  
Mr. & Mrs. Walter A. Haas  
Mr. & Mrs. Newton Johnston Hale  
Mr. & Mrs. Richard C. Ham  
Mr. & Mrs. Robert C. Harris  
Mrs. Edward T. Harrison  
Mrs. Griffith Henshaw  
Walter Hoving  
Mr. & Mrs. Jack H. How  
Mr. & Mrs. Jaquelin H. Hume  
Charles Kendrick\*  
Mr. & Mrs. J. R. Kiely  
Mr. & Mrs. Daniel E. Koshland  
Mrs. Jesse Koshland  
Mrs. Charles B. Kuhn  
Mr. & Mrs. Roger D. Lapham, Jr.  
Dr. Mary H. Layman  
Mr. & Mrs. Edmund W. Littlefield  
Mr. & Mrs. Victor L. Marcus  
Marsh & McLennan Company  
The Atholl McBean Foundation  
Mr. & Mrs. E. O. McCormick  
McKinsey & Co., Inc.  
Mr. & Mrs. Richard K. Miller  
Robert M. Moore  
Mr. & Mrs. Peter Morrison  
Dorothy Spreckels Munn  
Pacific Lighting Corporation  
Pacific Telephone & Telegraph Co.  
Mrs. T. S. Petersen  
Mr. & Mrs. Louis A. Petri  
Mrs. Stanley Powell  
Mr. & Mrs. J. Cornelius Rathborne  
Dr. & Mrs. Alan J. Rosenberg  
Mrs. Madeleine Haas Russell  
A. E. Sbarboro  
Mrs. Robert H. Scanlon  
Mrs. James H. Schwabacher  
James H. Schwabacher, Jr.  
Shell Companies Foundation, Inc.  
Levi Strauss Foundation  
Syntex Corporation  
Stauffer Chemical Co.  
Frank Tack  
Teledyne Charitable Trust Fund  
Transamerica Corporation  
Tribune Publishing Co.  
Mr. & Mrs. Henry F. Trione  
Mrs. Nlon Tucker  
Union Oil Company of California  
United States Steel Foundation, Inc.  
Utah Construction & Mining Co.  
Mr. & Mrs. D. G. Volkman, Jr.  
T. B. Walker Foundation  
Mr. & Mrs. Paul L. Wattis  
World Airways, Inc.  
Mrs. J. D. Zellerbach



## GUARANTOR MEMBERS

The San Francisco Opera Association gratefully acknowledges the generous and devoted support of its orchestra, grand tier and box subscribers to the Regular Series, all of them Guarantors as listed below:

### \$500.00 to \$999—Donor

Acme Foundation  
 Roy Anderson Associates, Inc.  
 Robert Baer, M.D.  
 Mrs. D. P. Barrett  
 Mr. & Mrs. Alfred X. Baxter  
 Mrs. Charles R. Blyth  
 Mrs. Starr Bruce  
 Mr. & Mrs. J. B. Cella, II  
 Mrs. Oswald E. Cooper  
 William H. Crocker  
 Mr. & Mrs. Thomas J. Davis, Jr.  
 Del Monte Properties  
 Lawrence E. Deutsch  
 Mr. & Mrs. Robert Di Giorgio  
 Eric B. Dohrmann  
 Mr. & Mrs. Milton H. Esberg, Jr.  
 Mrs. Alexander Field  
 Mr. & Mrs. R. Gwin Follis  
 Mrs. L. Henry Garland  
 Elsa T. Guggenhime Trust  
 Mr. & Mrs. Richard E. Guggenhime  
 Mrs. Crescent Porter Hale  
 Mrs. Lucia Anderson Halsey  
 Mrs. Charles L. Harney  
 Mr. & Mrs. Harry Hastings  
 Mrs. Frederick J. Hellman  
 Jerome Hill  
 Honig-Cooper & Harrington  
 Mr. & Mrs. Thomas Carr Howe  
 Dr. Fred G. Hudson  
 Mr. & Mrs. Wm. N. L. Hutchinson, Jr.  
 Dora D. Ide  
 Industrial Indemnity Company  
 Walter S. Johnson  
 Mr & Mrs. J. W. Komes  
 Lakeside Foundation  
 Mrs. Roger Lapham  
 Mr. & Mrs. Sidney Loeb  
 Mr. & Mrs. John S. Logan  
 Mrs. Felix McGinnis  
 Mr. & Mrs. Merl McHenry  
 Mr & Mrs. Dent Macdonough  
 Mr. & Mrs. Melville Marx  
 Mr. & Mrs. John R. Metcalf  
 Mr. & Mrs. Wilson Meyer  
 Mr. & Mrs. Otto N. Miller  
 Mr. & Mrs. Kenneth Monteagle  
 Oliver Investment Company  
 Mrs. T. A. Peake  
 Price Waterhouse & Company  
 Thomas K. Proctor  
 Mr. & Mrs. Arthur Rock  
 Theodore Rosenberg Charitable Foundation  
 Mrs. W. P. Roth  
 Mrs. Hannes Schroll  
 Mr. & Mrs. Floyd C. Shank  
 Mr. & Mrs. Roy L. Shurtleff  
 Stecher-Traung-Schmidt Corp.  
 The Louise A & Walter H. Sullivan  
 Foundation  
 Mr. & Mrs. Augustus Taylor, Jr.  
 Title Insurance & Trust Company  
 United States Leasing Corp.  
 Mr & Mrs Brooks Walker  
 Mr. & Mrs. Brooks Walker, Jr.  
 Mr. & Mrs. Edmond C. Ward  
 The E. O. Wattis Foundation  
 Mr. & Mrs. Palmer Wheaton  
 Whitaker & Baxter  
 Williams & Burrows, Inc.  
 Mr & Mrs. J. Perry Yates  
 \*Deceased

Mr. & Mrs. Wm. R. Abbott, Jr.  
 C. R. Adams  
 Mrs. Alexander Albert  
 Mayor and Mrs. Joseph L. Alioto  
 Mr. & Mrs. Ernest O. Anders  
 Philip H. Angell, Jr.  
 Mr. & Mrs. Samuel D. Archibald  
 Val Arnold  
 Mrs. Henry Arrighi  
 David M. Arrigoni & Assoc., Inc.  
 Dr. & Mrs. William H. Ayres  
 Mr. & Mrs. Walter M. Baird  
 Mr. & Mrs. Edgar Baker  
 Miss Andrea Balint  
 Mr. & Mrs. Philip Bancroft, Jr.  
 Mr. & Mrs. Harry Barnett  
 Dr. & Mrs. Shirley Harold Baron  
 Mr. & Mrs. Irving Bartel  
 Dr. & Mrs. Albert F. Bartz  
 Mrs. Bradford Baruh  
 Mr. & Mrs. Alfred X. Baxter  
 Mrs. William Bayless  
 Mr. & Mrs. Stephen D. Bechtel  
 Spencer Solon Beman, III  
 Mr. & Mrs. Ernest A. Benesch  
 Mrs. G. Grace Benoist  
 Mrs. Walter H. Bentley  
 Mrs. Whitney Bentley  
 Mrs. Dikran M. Berberian  
 Dr. & Mrs. Adolphus A. Berger  
 Mr. & Mrs. Eugene M. Berger  
 John P. Bergstrom, M.D.  
 Mr. & Mrs. H. B. Bertillion  
 Carol A. Bettilyon  
 Rose Biagini—Furs  
 Mrs. Newton Bissinger  
 Mrs. Paul A. Bissinger  
 Clement James Blaha  
 Robert T. Blazejack  
 Mr. & Mrs. Fred W. Bloch  
 Mr. & Mrs. Robert Blum  
 Mr. & Mrs. Joseph Blumenfeld  
 Mrs. Charles Blyth  
 Mrs. Walter W. Boardman  
 Mr. & Mrs. James S. Bodrero  
 Mr. & Mrs. Johnson S. Bogart  
 Mr. & Mrs. Philip S. Boone  
 Mr. & Mrs. D. Power Boothe  
 George McNear Bowles  
 Mr. & Mrs. Henry M. Bowles  
 Miss Louise Boyd  
 A. Harry Brawner  
 Mr. & Mrs. John Norton Breeden  
 Mr. & Mrs. Thomas E. Brewer  
 Mrs. E. R. Bridgewater  
 Dr. & Mrs. Mark Brockbank  
 Mrs. John Brooke  
 John F. Brooke, Jr.  
 Mr. & Mrs. Valentine Brookes  
 Mrs. Ralph Browne  
 Mr. & Mrs. Walter J. Browne  
 Mrs. E. E. Brownell  
 Mr. & Mrs. Carleton F. Bryan  
 Mr. & Mrs. John M. Bryan  
 Mr. & Mrs. Richard I. Buckwalter  
 Mrs. Donald B. Burger  
 Mr. & Mrs. Edgar L. Buttner  
 George H. Cabaniss, Jr.  
 Robert W. Cahill  
 Mr. & Mrs. William Cameron  
 Mrs. Horace O. Camm  
 Mr. & Mrs. Harry F. Camp  
 Mrs. John D. Campbell  
 Mr. & Mrs. Francis Carroll  
 Mr. & Mrs. Henry Cartan  
 Mr. & Mrs. William Cavalier, Jr.  
 Dr. & Mrs. Philip A. Cavelti  
 Mr. & Mrs. John B. Cella, II  
 Mr. & Mrs. Selah Chamberlain, Jr.  
 Mrs. H. Stephen Chase  
 Mrs. Dunya Chernenko-Lit  
 Mr. & Mrs. Arnold C. Childhouse  
 Mr. & Mrs. Marouis W. Childs  
 Mrs. Charles A. Christin  
 Mr. & Mrs. Warren H. Clark  
 Miss Persis Coleman  
 Mrs. Robert S. Colman  
 Mrs. D. Stephen Coney  
 Mrs. Philip Conley  
 Miss Mary R. Conlin  
 Mr. & Mrs. Ransom Cook  
 Richard P. Cooley  
 Dr. & Mrs. C. E. Cooper  
 Mr. & Mrs. O. E. Cooper  
 Mr. & Mrs. Alexander S. Coplin  
 Mrs. Francesca P. Cortese  
 Mr. & Mrs. Malcolm Cravens  
 Mrs. John D. Crowley  
 Mr. & Mrs. Thomas B. Crowley  
 John N. Cummings  
 Mrs. John M. Cunningham  
 Garniss H. Curtis  
 Margaret Curtis  
 Mr. & Mrs. Thos. Dahl  
 Mr. & Mrs. Jay Darwin

## BALDWIN

# Viva



the organ  
 that teaches  
 you organ!



If you'd like  
 a home organ  
 and MORE,  
 meet VIVA . . .

## BALDWIN

310 Sutter St., San Francisco  
 2100 Broadway, Oakland  
 1745 S. El Camino Real, San Mateo



THE  
BEAUTY  
OF  
FINE  
JADE



ring  
1100.

from  
San Francisco's  
Fine  
Jeweler

since 1890  
362-2885

**Constant J. Auger**

210 POST  
Suite 602



send  
one gift  
for all the  
children



Not sure of sizes? Not really sure of ages? Send the one gift that's designed for children from 2 to 12—Highlights for Children. Eleven big issues, 42 pages or more, illustrated in color. Stories, articles, crafts, hidden pictures, games and just plain fun . . . a wealth of materials designed to appeal to pre-readers and pre-teens.

**Gift Rates:** 11 issues, including resource-index issue that organizes each year's collection, \$7.95. Two gifts, \$7.50 each. Three or more gifts, \$7.00 each.

**Highlights® for Children**

2300 W. Fifth Ave., Dept. QA2, Col., O. 43216

Please send HIGHLIGHTS as my gift to:

names \_\_\_\_\_ ages \_\_\_\_\_

address \_\_\_\_\_

your name \_\_\_\_\_  Bill me after Jan. 1st.

(Please include your address, if different from child's.)

QA2

GDZ 45

Mr. & Mrs. Forrest Davidson  
D. Douglas Davies  
Ralph K. Davies  
Marion McEachern Dawson  
Mrs. Douglas Day  
Dan and Terry DeBra  
Mrs. Genevieve deDampierre  
Richard de Latour  
Mr. & Mrs. Walter Alfred de Martini  
Reid W. Dennis  
Mr. & Mrs. Robert Evan Dettner  
Mr. & Mrs. Kenneth Joseph Detwiler  
Mr. & Mrs. Daniel H. Dibert  
Countess Lillian Remillard Dandini di Cesena  
Mr. & Mrs. William Diedrich  
Mr. & Mrs. Robert Di Giorgio  
Mr. & Mrs. Dewey Donnell  
Mrs. F. A. Dorn  
Mr. & Mrs. Rudolph Drews  
Tony Ducks  
Dr. & Mrs. Michael Dumas  
Mrs. James Durkin  
James E. Durkin  
Mrs. Cavalier Durney  
Mr. & Mrs. Thomas R. Dwyer  
Mr. & Mrs. George C. Dyer  
Mr. & Mrs. Frederick J. Early  
Mr. & Mrs. Marriner Eccles  
Mr. & Mrs. Philip S. Ehrlich  
Alexis L. Ehrman, Jr.  
Mr. & Mrs. Duncan Elliott  
Miss Olive English  
W. L. Erdbrink, M.D.  
Mr. & Mrs. Lennart G. Erickson  
Mr. & Mrs. Richard Ernst  
Mr. & Mrs. Milton H. Esberg, Jr.  
Mr. & Mrs. Jeremy Ets-Hokin  
Mr. & Mrs. Louis Ets-Hokin  
Mrs. I. P. Ettelson  
Mr. & Mrs. Lee Ettelson  
Mrs. Albert John Evers  
Mr. & Mrs. Charles B. Farrow  
Mr. & Mrs. M. J. Felciano  
Mrs. Peter J. Feykert  
Mr. & Mrs. Charles D. Field  
Paula Fish, M.D.  
George Hopper Fitch  
Mr. & Mrs. Mortimer Fleishacker  
Mr. & Mrs. Benjamin Follett  
Mr. & Mrs. R. Gwin Follis  
Dr. & Mrs. John Douglas Forbes  
Mr. & Mrs. James D. Forward, Jr.  
Allen B. Freitag, M.D.  
Mr. & Mrs. Frank H. Fries  
Mrs. Donald E. Fritts  
Arthur J. Fritz  
Alfred Fromm  
Mr. & Mrs. Alfred J. Gagnon  
Mr. & Mrs. A. R. Gallaway, Jr.  
Mr. & Mrs. Nicholas Gannam  
Mrs. L. Henry Garland  
Richard Garretson  
Mr. & Mrs. Edward Gauer  
Kathryn Gehrels  
Frank Gerbode, M.D.  
Mrs. L. M. Giannini  
Morton R. Gibbons, Jr., M.D.  
Mr. & Mrs. T. S. Glide, Jr.  
Mrs. Maurice L. Goldman  
Mrs. Rose Goldstein  
Mr. & Mrs. Reeve Gould  
Mrs. Chalmers Graham  
Dr. & Mrs. Gerald H. Gray  
Mr. & Mrs. Philip Green  
Mr. & Mrs. Robert Clarke Green  
Mr. & Mrs. Stuart N. Greenberg  
Mr. & Mrs. Allen Griffin  
Mr. & Mrs. Raymond F. Griffin  
Mr. & Mrs. Edward McC. Griffith  
Dr. Marc N. Gropper  
Mr. & Mrs. Adrian Gruhn  
Mrs. Joseph Guterman  
Mr. & Mrs. Edward W. Gwinner, Jr.  
Mr. & Mrs. Walter A. Haas  
C. Nelson Hackett  
Mrs. Crescent Porter Hale  
Mr. & Mrs. George N. Hale, Jr.  
Mr. & Mrs. Marshal Hale  
Mr. & Mrs. Newton J. Hale  
Prentis Cobb Hale  
Mr. & Mrs. Randolph Hale  
David W. Hall  
Mrs. Lucia Anderson Halsey  
Mr. & Mrs. Richard C. Ham  
Mr. & Mrs. Edward Morse Hamilton  
Dr. & Mrs. John Morgan Hamren  
Mr. & Mrs. David J. Hardy  
Mrs. Charles Leonard Harney  
Dr. & Mrs. David O. Harrington  
Mrs. Lucie King Harris  
Dr. M. Robert Harris  
Mr. & Mrs. Robert C. Harris  
Mr. & Mrs. Theodore Harris  
Mrs. Edward T. Harrison  
Mr. & Mrs. Gregory A. Harrison  
Mrs. Henry H. Hart  
Mrs. June Shaw Haseltine  
Mr. & Mrs. Harry Hastings  
Horace Osgood Hayes  
Mrs. Easton G. Hecker  
Mr. & Mrs. Archie Hefner  
Mrs. Walter D. Helfer  
Mrs. F. J. Hellman  
Mr. & Mrs. Marco F. Hellman  
Mrs. Robert B. Henderson  
Mrs. Griffith Henshaw  
Mr. & Mrs. William G. Henshaw

Mr. & Mrs. John S. Hensill  
Mrs. Thomas Mayne Reid Herron  
Mr. & Mrs. Whalen K. Hickey  
Mr. & Mrs. Donald E. Hietter  
Mr. & Mrs. Henry Hill  
Jerry J. Hilliard—W. & J. Sloane, Inc.  
Mr. & Mrs. W. R. Hilligoss  
Mr. Austin E. Hills  
Mr. & Mrs. Leslie W. Hills  
Mr. & Mrs. Reuben W. Hills, III  
Mr. & Mrs. Harry H. Hilp, Sr.  
Mr. & Mrs. Charles S. Hobbs  
Mr. & Mrs. Jay Holmes  
Mr. & Mrs. Douglas Holt  
Mr. & Mrs. William Knox Holt  
Mr. & Mrs. Louis Honig  
Mr. & Mrs. Jack H. How  
Mr. & Mrs. Thomas Carr Howe  
Mrs. Walter L. Huber  
Fred G. Hudson, M.D.  
Joseph J. Hughes  
Mr. & Mrs. Jaquelin H. Hume  
E. N. W. Hunter  
Dr. & Mrs. T. Wesley Hunter  
Miss Marion Huntington  
Mr. & Mrs. Wm. N. L. Hutchinson, Jr.  
Mr. & Mrs. Julius Hyman  
Dr. Paul J. Isakson  
Mr. & Mrs. Bernard Jaffe  
S. Perry Jenkins  
Mrs. John Jerome  
William C. Jewett  
Harold I. Johnson  
Jon B. Johnson  
Mr. & Mrs. Walter S. Johnson  
Mr. & Mrs. Allen Hughes Jones  
Mrs. Em Eccles Jones  
Mr. & Mrs. Robert Metcalf Jones  
Mrs. Kenyon Joyce  
Mrs. Samuel Kahn  
Mr. & Mrs. Edgar F. Kaiser  
Mr. & Mrs. Charles Kendrick  
Mrs. Gerald D. Kennedy  
Mrs. William Kent, Jr.  
Mr. & Mrs. John R. Kiely  
Dr. & Mrs. Don King  
Mr. & Mrs. Francis Kirkham  
Mrs. Philip Klein  
Mr. & Mrs. Gorham Knowles  
Robert T. A. Knudsen  
Frederick O. and Inge R. Koebig  
Mr. & Mrs. Theodore A. Koln  
Miss Elsa Korbel  
John Kornfeld Associates, Inc.  
Mr. & Mrs. Daniel E. Koshland  
Mrs. Jesse Koshland  
Mr. & Mrs. Robert J. Koshland  
Leroy H. Krusi  
Mrs. Linda Laine  
Mr. & Mrs. Vernon N. Lambertsen  
Mrs. Eleanor B. Lamson  
Mr. & Mrs. William Brooke Land  
Shirle A. Lange  
Mr. & Mrs. Roger D. Lapham, Jr.  
Mr. & Mrs. Mitchell L. Lathrop  
Mr. & Mrs. Robert Lauter  
Dr. Hal Leader, Jr.  
Mr. & Mrs. Robert C. Leefeldt  
Mr. & Mrs. Kenneth Leitch  
Mrs. John A. Lesoine  
Mrs. Estelle F. Levine  
Max P. Levine, M.D.  
Dr. & Mrs. Douglas A. Liddicoat  
Mrs. Jesse W. Lilienthal  
Mrs. Philip N. Lilienthal  
Larry G. Lillie  
Mr. & Mrs. Reint Lingeman  
Mr. & Mrs. Edmund W. Littlefield  
George Livermore  
Lawrence Livingston  
Mr. & Mrs. John S. Logan  
L'Orangerie Marrakech Restaurant  
Mrs. Gordon Lovegrove  
Mr. & Mrs. James J. Ludwig  
Louis R. Lurie  
George K. Lux  
Mr. & Mrs. Carlos J. Maas  
Mr. & Mrs. Graeme K. MacDonald  
Mr. & Mrs. Dent W. Macdonough  
Henry C. Mack  
Mr. & Mrs. John B. Mackinlay  
Peter Macris  
Mr. & Mrs. John H. Madonna  
Cyril Magnin  
Mr. & Mrs. Robert A. Magowan  
Mrs. J. W. Mailliard, Jr.  
Mrs. Alan Mandell  
Mr. & Mrs. Victor L. Marcus  
Mr. & Mrs. Francis N. Marshall  
J. H. Marshall  
Mrs. Lewis Marsten  
Roger M. Martin  
Mr. & Mrs. George Dunham Mason  
Charles E. Mather  
Joe Mathis  
Mrs. Albert C. Mattei  
Mr. & Mrs. R. B. Mattson  
Mr. & Mrs. William D. Maus, Jr.  
Mr. & Mrs. Fritz Maytag  
Mrs. James W. McAlister  
Mr. & Mrs. Elliott McAllister  
John Neylan McBaine  
Mr. & Mrs. Thomas K. McCarthy  
Mr. & Mrs. Ernest O. McCormick  
Mrs. Garret McEnerney, II  
Mrs. Felix McGinnis



Mrs. Merl McHenry  
 Mr. & Mrs. James A. McKellar  
 J. R. McMicking  
 Dr. & Mrs. William McMillan  
 The Family of Mr. & Mrs. George P. McNear  
 Mr. & Mrs. Edgar N. Meakin  
 Mr. & Mrs. Allen E. Meier  
 Mr. & Mrs. William Wallace Mein  
 Mr. & Mrs. Edwin J. Mejia  
 Mrs. Gregor C. Merrill  
 Mr. & Mrs. Harvie M. Merrill  
 Robert Messick  
 Mrs. Julian J. Meyer  
 Mr. & Mrs. Otto E. Meyer  
 Mr. & Mrs. Wilson Meyer  
 Aimé G. Michaud  
 Mrs. Hugh G. Miller  
 Mr. & Mrs. Otto N. Miller  
 Mrs. Paul A. Miller  
 Mr. & Mrs. Richard K. Miller  
 Mrs. Robert Watt Miller  
 Mrs. Edward Morgan Mills  
 I. F. Minnis, Jr.  
 Mrs. Vivienne Moller  
 Mr. & Mrs. Arch Monson, Jr.  
 Mr. & Mrs. Kenneth Monteagle  
 Mr. & Mrs. Paige Monteagle  
 E. Geoffrey Montgomery  
 Mr. & Mrs. Joseph A. Moore, Jr.  
 Mildred R. Moore  
 Dr. & Mrs. H. C. Murphree  
 Jane Murray  
 Dr. & Mrs. A. C. Musladin  
 Mrs. Joseph C. Musto  
 Helen E. Myers  
 E. M. Nagel  
 Kelvin Neil  
 Dr. & Mrs. Thomas S. Nelsen  
 Clarence E. Nelson  
 Mrs. Richard Lawrence Nelson  
 Mr. & Mrs. Edwin N. Ness  
 Dr. & Mrs. Charles A. Noble, Jr.  
 William H. Noble  
 Notre Dame of the Prairies  
 Mrs. Ernest L. Offen  
 Mr. & Mrs. Jon Older  
 Mrs. A. Leslie Oliver  
 Mrs. Alfred J. Olmo  
 Dr. & Mrs. A. C. Olshen  
 Oscar E. Olson  
 Mr. & Mrs. M. Lester O'Shea  
 Mr. & Mrs. William H. Orrick, Jr.  
 Mr. & Mrs. John R. Page  
 Mr. Sherrill A. Parsons  
 Dr. Frank R. Passantino  
 Mary Frances Patterson  
 Mr. & Mrs. Fred Pavlov  
 Mrs. Wayne Pearson  
 Mrs. Williamson Pell, Jr.  
 Peter A. Pender  
 Dr. John Peschau  
 Mrs. Lester S. Peterson  
 Mr. & Mrs. Louis A. Petri  
 Jefferson E. Peyser  
 Mr. & Mrs. Herman Phleger  
 William S. Picher  
 Mr. & Mrs. Raymond K. Pierce  
 Mr. & Mrs. Milton Pilhashy  
 Mike Pisani  
 Mr. & Mrs. H. D. Pischel  
 George A. Platt  
 Mr. & Mrs. George A. Pope, Jr.  
 J. Lemoine Porter  
 Mrs. Stanley Powell  
 Spelman Prentice  
 Mr. & Mrs. Donald N. Pritzker  
 Mr. & Mrs. John Baird Quigley  
 Mildred J. Quinby  
 Mr. & Mrs. Richard H. Rasmussen  
 J. Cornelius Rathborne  
 Mr. & Mrs. Donald N. Ravitch  
 Mr. & Mrs. Albert L. Reeves  
 Mr. & Mrs. Robert S. Reis  
 Mrs. Constance B. Reynolds  
 E. Jerome Richards  
 Mr. & Mrs. Irwin Roberts  
 James D. Robertson  
 Mr. & Mrs. Roy Robinette  
 Mr. & Mrs. Charles W. Robinson  
 Mr. & Mrs. Henry Wells Robinson  
 Mr. & Mrs. Ralph J. Roelsing  
 Dr. & Mrs. Ernest Rogers  
 Mr. & Mrs. John G. Rogers  
 Mrs. Nathan Rogers, Sr.  
 Dr. Charles Rolle  
 Mr. & Mrs. Ralph Romney  
 Mrs. Leon L. Roos  
 Dr. & Mrs. Hugh Rose, Jr.  
 Mr. & Mrs. Ralph S. Rose  
 Mr. Theodore T. Rosenberg  
 Mrs. William P. Roth  
 Mrs. W. Lansing Rothschild  
 Madeleine Haas Russell  
 Mrs. M. J. Ryan  
 Dr. & Mrs. John J. Sampson  
 Mr. & Mrs. Robert Samson  
 B. T. Sanders  
 Ruth Sanderson  
 Mr. & Mrs. Charles R. Sargent  
 Alfred B. Saroni, Jr.  
 Louis Saroni, II  
 Mr. & Mrs. Guido Saveri  
 Dr. William Sawyer  
 Mrs. Robert H. Scanlon  
 Mrs. Walter Schilling  
 Mr. & Mrs. George B. Schirmer

Miss Kay Schmulowitz  
 Lawrence A. Schultz  
 Mr. & Mrs. Jacob Gould Schurman, III  
 Mr. & Mrs. Karl F. Schuster  
 Mrs. James H. Schwabacher  
 Dr. & Mrs. Martin J. Seid  
 Eunice B. J. Senderman  
 Mrs. A. Setrakian  
 Mrs. Ben Shane  
 Mr. & Mrs. Robert Shannon  
 A. Jess Shenson  
 Dr. Ben Shenson  
 Mrs. Louis Shenson  
 William A. Sheppard  
 Dr. & Mrs. Frederic P. Shidler  
 Walter H. Shorenstein  
 Mr. & Mrs. Roy L. Shurtleff  
 Dr. & Mrs. Henry L. Silvani  
 Professor & Mrs. George P. Simonds  
 Mrs. Ray Simonds  
 Mr. & Mrs. John L. Simpson  
 Mr. & Mrs. Edgar Sinton  
 Mr. & Mrs. Frank H. Sloss  
 Mr. & Mrs. Richard L. Sloss  
 Mrs. Ferdinand Smith  
 Mr. & Mrs. Russell G. Smith  
 Mrs. Rosemarie Snell  
 Dr. & Mrs. Joseph C. Solomon  
 Mr. & Mrs. G. Willard Somers  
 Muriel McKeivitt Sonné  
 Mrs. T. A. Soong  
 Mr. & Mrs. William G. Spanjian  
 J. W. Speer  
 Mr. & Mrs. Leslie E. Spelman  
 Lloyd Staley  
 Mr. & Mrs. Eric M. Stanford  
 Mr. & Mrs. Robert Stanton  
 Mrs. C. R. St. Aubyn  
 Mr. & Mrs. Shorb Steele  
 Mr. & Mrs. Louis P. Steller  
 Mr. & Mrs. Ralph J. A. Stern  
 Mr. & Mrs. Norman C. Stone  
 Dwight V. Strong  
 Mr. & Mrs. Barry Stubbs  
 Arthur J. Sullivan  
 Mrs. Walter H. Sullivan, Sr.  
 Mr. & Mrs. Bert O. Summers  
 Benjamin H. Swig  
 Mrs. Forrest Tancer  
 Mrs. Michael E. Tanzer  
 Mr. & Mrs. Augustus Taylor, Jr.  
 Marvel M. Taylor  
 Mr. & Mrs. Milton Willard Terrill  
 Mr. & Mrs. Earl A. Terzian  
 Mr. & Mrs. K. Stanley Thompson  
 Harrison Thomson  
 Mr. & Mrs. John M. Thorpe  
 Charles Alma Tice  
 Mr. & Mrs. H. Keith Tiedemann  
 Mr. & Mrs. F. J. Thomas Tilton  
 Cyril R. Tobin  
 Mr. & Mrs. Joseph Zook Todd  
 Mr. & Mrs. Alfred T. Tomlinson  
 Miss Carol Tomlinson  
 E. N. Townsend  
 Christos Triantopoulos  
 The Tribune Publishing Co.  
 Gardiner Trowbridge, II  
 Mrs. Nion Tucker  
 Mrs. Grover Turnbow  
 Mrs. Ebe Cella Turner  
 Dr. & Mrs. John R. Upton  
 Mrs. Jerome Vigdor  
 Mrs. Paul H. Vincilione  
 Mr. & Mrs. Daniel Volkmann  
 Mr. & Mrs. Alexander von Hafften  
 Mr. & Mrs. George Wagner  
 Mr. & Mrs. Brooks Walker  
 Mr. & Mrs. Brooks Walker, Jr.  
 Mrs. Richard C. Walker  
 Mrs. Willis Walker  
 Dr. & Mrs. C. Allen Wall  
 Mrs. Edward Bennett Wallis  
 Whitney Warren  
 Mr. & Mrs. Harwood Warriner  
 Mr. & Mrs. Paul Wattis  
 Dr. & Mrs. Malcolm S. M. Watts  
 Mr. & Mrs. Edward P. Wells  
 Mr. & Mrs. Clem Whitaker, Jr.  
 Mrs. Leone Baxter Whitaker  
 Mrs. Lyndon C. Whitaker  
 Mr. & Mrs. Edward Banker White  
 Mr. & Mrs. George B. White  
 Mrs. George M. Wihl  
 Mrs. Brayton Wilbur  
 Thomas I. Williams  
 Mr. & Mrs. William Harris Williams  
 Glenn E. Willoughby, M.D.  
 Mr. & Mrs. Alfred S. Wisley  
 Carl Eugene Wilson, M.D.  
 E. Forbes Wilson  
 Mrs. Dean Witter  
 Mr. & Mrs. Jean C. Witter  
 Dr. & Mrs. Bert L. Wolfsohn  
 Mrs. Casimir Jackson Wood  
 Mr. & Mrs. Marvin Wood  
 Mrs. Theodore Wores  
 Edward M. Wright  
 Mr. & Mrs. J. Perry Yates  
 Dr. & Mrs. D. A. Youngdahl  
 Dr. & Mrs. Alejandro Zaffaroni  
 Mr. & Mrs. Harold L. Zellerbach  
 Thomas C. Zimmerman  
 Mr. & Mrs. Peter M. Zuber  
 Mr. & Mrs. Frederic M. Zumwalt

the coffee cantata

COCKTAIL GALLERY  
 CLASSICAL MUSIC  
 FINE PASTRIES

LUNCHEON • DINNER  
 AFTER THEATRE  
 PARKING AFTER 6

931-0770

2030 UNION STREET  
 international coffee house & RESTAURANT  
 SAN FRANCISCO




an IRISH coffee  
 IS awaiting you  
 at the Buena Vista



**One of Japan's  
nicest islands  
is just  
10 minutes away.**

And it offers everything you'd expect to find on a tour of Japan: galleries, exhibitions, shops, restaurants, bonsai trees, entertainments, a peace pagoda—and lots of friendly Japanese. It's the Japanese Cultural & Trade Center, on Geary Street between Laguna and Fillmore, atop an 850 car garage (with validated self-parking). What a delightful way to get away on a Saturday afternoon.



JAPANESE CULTURAL & TRADE CENTER  
We're just a bus ride away.

Sponsored and paid for by the retail merchants of Japan Town.

**Traditionally the Finest...  
Now \$3,000,000 Newer!**

*The Ambassador*  
HOTEL

Before the Theatre

Dine at  
The Elegant

*Lautrec*

Restaurant  
Nightly except Monday  
Dancing Sat. & Sun. Nights

After the Theatre  
swing in **The**

**cave**

Entertainment from 9 P.M.  
— Except Sunday

Always Star Entertainment  
at the World-Famous

**COCONUT  
GROVE**

Reservations: 386-5522

*The Ambassador*

3400 Wilshire Blvd. — 387-7011

**BOX HOLDERS**

Regular Subscription Series

**A**

General Director & Mrs. Kurt Herbert Adler

**B**

Mr. & Mrs. Robert W. Cahill  
Mr. & Mrs. Edward H. Gauer  
Mr. & Mrs. Adrian Gruhn

**C**

Mr. Richard P. Cooley  
Mr. & Mrs. Milton H. Esberg, Jr.  
Mr. & Mrs. Ernest O. McCormick  
Mrs. Paul A. Miller

**D**

Mr. & Mrs. R. Gwin Follis  
Mr. & Mrs. Robert C. Harris  
Mr. & Mrs. Thomas Carr Howe  
Mr. & Mrs. William Orrick, Jr.

**E**

Mrs. James S. Bodrero  
Mr. & Mrs. Rudolph J. Drews  
Mr. & Mrs. Harry Hastings

**F**

Mrs. Robert Watt Miller

**G**

Mr. & Mrs. Edward Morse Hamilton  
Mr. & Mrs. Otto N. Miller  
Mr. & Mrs. G. Willard Somers  
Mr. & Mrs. Brooks Walker

**H**

Mayor & Mrs. Joseph L. Alioto  
Mr. & Mrs. John N. Breeden  
Mrs. Felix McGinnis

**J**

Mr. & Mrs. John B. Cella  
Mr. & Mrs. Marco F. Hellman  
Mr. & Mrs. Richard C. Walker

**K**

Mr. & Mrs. Edgar F. Kaiser

**L**

Mrs. G. Grace Benoist  
Mr. & Mrs. Henry Cartan  
Mrs. Nion Tucker

**M**

Mr. & Mrs. Mortimer Fleishhacker

**N**

Mrs. Charles R. Blyth

**O**

Mr. & Mrs. Roger D. Lapham, Jr.  
Mr. & Mrs. Kenneth Monteagle

Mr. & Mrs. E. Geoffrey Montgomery  
Mr. & Mrs. George A. Pope, Jr.

**P**

Mr. Prentis Cobb Hale  
Senator & Mrs. William F. Knowland  
Mr. & Mrs. James J. Ludwig

**Q**

Mrs. Frederick J. Hellman  
Mr. & Mrs. Gorham Knowles  
Mr. & Mrs. Robert A. Magowan  
Mr. Spelman Prentice

**R**

Mr. & Mrs. Jaquelin H. Hume  
Mr. & Mrs. Carlos J. Maas  
Mr. & Mrs. J. Cornelius Rathborne

**S**

Mr. & Mrs. Walter A. Haas  
Mr. & Mrs. Daniel E. Koshland  
Mr. & Mrs. Robert J. Koshland  
Mrs. Louis Sloss

**T**

Mr. & Mrs. William Cavalier, Jr.  
Mrs. Cavalier Durney  
Mrs. Griffith Henshaw  
Mr. & Mrs. William G. Henshaw  
Mr. & Mrs. Robert C. Leefeldt  
Mr. & Mrs. Brooks Walker, Jr.

**U**

Mr. & Mrs. Malcolm Cravens  
Mrs. Charles L. Harney  
Mr. & Mrs. Paul Wattis

**V**

Mr. & Mrs. A. Harry Brawner  
Mr. & Mrs. John S. Logan  
Mr. & Mrs. Richard C. Ham

**W**

Mr. & Mrs. Selah Chamberlain, Jr.  
Mr. & Mrs. Richard K. Miller  
Mr. & Mrs. Augustus Taylor, Jr.

**X**

Mr. & Mrs. Louis A. Petri  
Mrs. Ebe Cella Turner

**Y**

Mr. & Mrs. Jay Holmes  
Mr. & Mrs. William Wallace Mein  
Mr. & Mrs. Graeme K. MacDonald

**Z**

Mr. & Mrs. George Dyer  
Mr. & Mrs. Lennart G. Erickson  
Mr. & Mrs. Clem Whitaker, Jr.

**NO TAPE RECORDERS OR CAMERAS PERMITTED IN THEATRE**

Libretti, opera calendars and opera glasses in foyer

Buffet service in basement promenade, dress circle  
and box tier on mezzanine floor during all performances

For lost and found information inquire at check room no. 3  
John Galindo, head usher

For further information call 621-6600, 9:00 - 4:00 p.m. Monday through Friday.

**PATRONS ATTENTION PLEASE!**

Fire Notice: There are sufficient exits in this building to accommodate the entire audience. The exit indicated by the lighted "exit" sign nearest your seat is the shortest route to the street. In case of fire please do not run—walk through that exit.



# WESTERN OPERA THEATER

THE TOURING AND EDUCATIONAL SUBSIDIARY  
OF THE SAN FRANCISCO OPERA

"To people who have wondered whether opera has any future in America, WOT appears to offer a fresh approach and a new hope."

*Howard Taubman, New York Times*

"Almost incredibly, Western Opera Theater seems to get better with every visit. It is impossible not to believe that it is one of the more significant phenomena on the American musical scene."

*William Glackin, Sacramento Bee*

"The cast achieved some of the finest, most tightly knit ensemble work to be seen on the American stage today."

*Heuwell Tircuit, San Francisco Chronicle*

"WOT can turn a recreation hall, a church, a gymnasium, a multi-purpose room into a magical theater."

*Stephanie von Buchau, High Fidelity/Musical America*

"Your outstanding company of young artists have truly added a new musical dimension to the lives of our students."

*Raymond G. Van Diest, Music Consultant,  
Arizona Department of Public Instruction*

"The audience was wildly enthusiastic about what it saw and heard and anxious to linger afterward to ask questions of the cast."

*Martin Bernheimer, Los Angeles Times*

"What a versatile, resourceful company is Western Opera Theater!"

*Daniel Cariaga, Long Beach Independent*

"The kids loved it. They won't forget their first opera."

*Mary Sue Westland, Alhambra (Calif.) Post-Advocate*

"I'm sure that all those at the auditorium yesterday wish we had more opera and wish we had more opera from the San Francisco touring troupe."

*Bina Breitner, Arizona Republic (Phoenix)*

1970/1971 SEASON  
NOVEMBER 9 THROUGH MAY 9

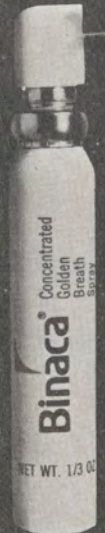
La Bohème	Puccini	Gianni Schicchi	Puccini
La Cenerentola (Cinderella)	Rossini	The Medium	Menotti
The Elixir of Love	Donizetti	The Spanish Hour	Ravel

Plus Readings of Unperformed American Operas

For further information, write or telephone Western Opera Theater, War Memorial Opera House, San Francisco, California 94102, (415) 861-4074.

# LOVE TOGETHER!

## BINACA® IS IN... BAD BREATH IS OUT.



VERY PORTABLE. VERY POWERFUL.

**ORIGINAL CAST ALBUM**  
JOSEPH KATNESS & LAWRENCE KASHA  
WITH  
MUSIC BY  
ADOLPH COMDEN AND GREEN  
LYRICS BY  
CHARLES STROUSE  
LIBRETTO BY  
LEE ADAMS  
BASED ON THE FILM "ALL ABOUT EVE"  
WITH ORIGINAL DANCE BY HARRY OBE  
WITH  
ROBERT  
CARIOU MANDAN  
AND  
WILLIAMS MARGART  
LEE ROY BEANS DONATE FRANKLIN  
AND  
PENNY FULLER  
MUSIC BY  
ROBERT BARNHARTLE RAY AGOSTINI  
LIBRETTO BY  
ADOLPH COMDEN AND GREEN  
LYRICS BY  
CHARLES STROUSE DONALD TIPPIN  
MUSIC BY  
LEE ADAMS  
DIRECTED & CHOREOGRAPHED BY  
RON FIELD

**BEST MUSICAL**  
"TONY AWARDS"  
BEST ACTRESS  
BEST DIRECTION  
BEST CHOREOGRAPHY

**LAUREN BACALL**  
"APPLAUSE"  
A NEW MUSICAL  
BY  
ADOLPH COMDEN AND GREEN  
CHARLES STROUSE  
LIBRETTO BY  
LEE ADAMS  
MUSIC BY  
ROBERT BARNHARTLE RAY AGOSTINI  
LIBRETTO BY  
ADOLPH COMDEN AND GREEN  
LYRICS BY  
CHARLES STROUSE DONALD TIPPIN  
MUSIC BY  
LEE ADAMS  
DIRECTED & CHOREOGRAPHED BY  
RON FIELD

ABC OCS 11 1100

**BEST MUSICAL - 1970**  
**"TONY AWARDS"**  
AVAILABLE ON ABC RECORDS





Authentic.

# DEWAR'S "White Label"

The Scotch  
that never varies

BLENDED SCOTCH WHISKY • 86.8 PROOF  
© SCHENLEY IMPORTS CO., N. Y., N. Y.



THE  
FABLED  
ONDINE®

A gift  
from  
the sea.

Parfum and fragrance accessories: \$30.00 to \$3.50.  
Created by Suzanne Thierry, Paris.  
Available at Joseph Magnin.

## WHO'S WHO

(Continued from p. 43)

his singing career flourished and he was eventually to encompass most leading operatic basso roles. He has also appeared in a great number of operettas and musicals, oratorios and song recitals. His radio and television appearances are numerous and very popular, Tozzi being one of the most articulate spokesmen of the opera world. His credits include a huge list of recordings, featuring at least 10 complete operas. Most recently, he has won acclaim for the film version of *Die Meistersinger*, in which he sang the role of Hans Sachs.



**ALAIN VANZO** makes his American stage debut in the title role of *Faust*. Born in Monte Carlo, Vanzo was first noted at the 1954 Cannes Tenor Competition, where he obtained first prize among 800 competitors. The same year he signed a contract with the Paris Opera, on whose roster he has remained until this day. Equally renowned for tenor roles in the French and Italian repertoire, Vanzo has by now appeared in most major opera houses of the world, most recently in Mexico City, where he sang *Des Grieux* to Beverly Sills' Manon. Next year, he will re-open the Paris Opera in the title role of Berlioz' *Benvenuto Cellini*. He has made a great number of recordings, notably the complete *Lakme* with Joan Sutherland.



**WOLFGANG WINDGASSEN**, probably the most respected and esteemed heldentenor of our time, admired by audiences, critics, singers and musicians alike, makes his belated and unexpected San Francisco Opera debut as *Tristan*, his most famous role. This will be the first time he will sing the role in the United States. His career began mainly in the Italian repertoire, but after he sang his first *Siegfried* (1950), he devoted his time almost exclusively to Wagnerian roles. He was invited to sing *Parsifal* at the inaugural postwar Bayreuth Festival season in 1951 and has returned to Bayreuth for every single season since. He was heard at the Metropolitan Opera in 1957, singing *Siegfried* in *Die Walküre*, as well as the *Siegfried* and *Götterdämmerung* *Siegfrieds*. He sang the first *Tristan* of his career in 1951, his 100th in 1959 and his 175th in 1965, at which time he broke the world record for that role. He has also recorded the complete opera with Birgit Nilsson as *Isolde*. President of the Union of German Artists for a great number of years, he was appointed artistic director of the Stuttgart Opera effective at the end of the 1970/71 season.

## Just once in his life, everyone should own an orchestra.

It would be quite an experience to have all that music at your command. To control all those woodwinds, strings, brass and percussion... what a feeling of power!

Unfortunately it's beyond the reach of most of us, financially at least. So consider a reasonable alternative: the Yamaha Electone E-3 organ. It's an orchestra you can play yourself, for just \$2,395.\* And it has a range of sounds other organs can't match for as much as \$8,000.



A touch of baroque? Push the levers and you're back in the age of Bach. A little brass ensemble work? Careful you don't stand in front of the trombones, please. Just about any sounds you'd find in a symphony orchestra, plus a few more, are at your service.

And you don't even have to wear a tux.

\*(Manufacturer's suggested retail price.)

**YAMAHA**  
157 Geary Street  
(next to City of Paris)

Ask about the Yamaha School of Music, a uniquely rich educational experience for young children 4-8 years.





TRANQUILITY OF THE EAST  
Cloisonne In The Tradition Of The Ch'ing Dynasty  
*From the Famous Collection of Outstanding Marbro Originals*

## MARBRO LAMP COMPANY

1625 S. LOS ANGELES ST., CALIFORNIA 90015

PERMANENT SHOWROOMS

CHICAGO: Merchandise Mart • SAN FRANCISCO: Western Merchandise Mart • DALLAS: Trade Mart

LOS ANGELES: Home Furnishings Mart • ATLANTA: Merchandise Mart

HIGH POINT: Southern Furniture Exposition Bldg. • PITTSBURGH: Marforth Showrooms • CINCINNATI & INDIANAPOLIS: Murray Showrooms

FOREIGN OFFICES: BOMBAY • COPENHAGEN • FLORENCE • HONG KONG • LISBON • LONDON • MADRID • PARIS • TOKYO • VIENNA



# You won't believe



It's the world's largest collection of believe-it-or-nots. A whole country filled with incredibles. Incredible even before you get there. Because just off the eastern shore is the longest stretch of living coral in the world. The Great Barrier Reef. (It's almost as long as the entire East Coast of the United States.) Coral in every conceivable shape. (A mushroom? A human brain?) And even inconceivable colors. (Taupe with powder blue tips? Or red with pink points?) And where there's coral, there's fish. In equally inconceivable colors. Orange with blue dots. Brown and white stripes with purple eyelids. And some such a bright and shocking shade of blue you'd swear they had batteries under their scales.

Coming into the Sydney harbor you'll see the most spectacular opera house in the world.

Bigger than nine football fields. Taller than fourteen locomotives. And more expensive than a lifetime subscription to the Met for a million New Yorkers.

And then there's the cassowary.

A bird that doesn't fly but wears a crash helmet on its head. (Handy for running through jungles.)

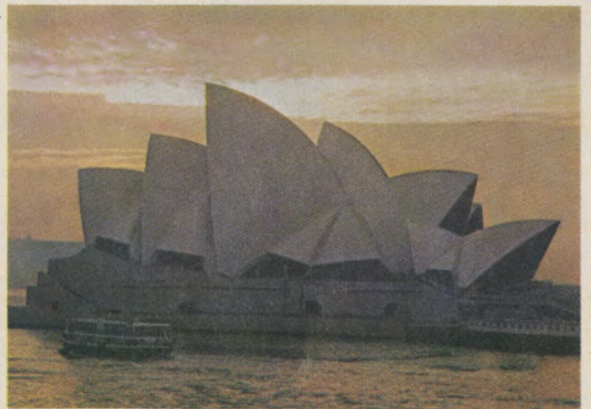
You probably won't get to see him running through the jungle, but you can see him running through places like the Lone Pine Sanctuary, just outside of Brisbane.

They've got a lot of weird animals there.

The kangaroo. (He really does run like he has springs in his feet.)

A bear that isn't a bear. The koala. (He's really a marsupial, like the kangaroo.)

And another bird, the emu, that doesn't





# Australia.



fly either but eats almost anything he can get his beak on. (Like your raincoat, if you're not careful.)

But the ultimate Australian Incredible has got to be the platypus. Part mammal. (It suckles its young.) Part reptile. (It lays eggs.)

And utterly improbable looking.

It has webbed feet but a furry body. A rubbery radarlike duckbill. And a furry, ruddery tail.

The best place to see one is in the platypusary (that's right, platypusary) in Healesville, near Melbourne.

150 years ago scientists laughed at it and said it was a hoax.

The platypus is having the last laugh because now they think he's the missing link between mammal and reptile.

A missing link between modern man and prehistoric man was

just discovered out in the outback. (That's the vast desert area out in the center of the country.)

Primitive stone carvings that date the carvers back as far as 100,000 years ago. Or more. Which is earlier than even the Aborigines. (Up until now everybody thought the Aborigines were the first Australians.)

You can also see the biggest stone in the world, carved or otherwise, out in the outback. Near Alice Springs.

One solid mass of sandstone that changes from pink to bluish brown to orange to a real red depending on how the sun feels that day.

Coral reefs and electric fish. An opera house that looks like it could fly. And birds that never will. Non-bear bears and funny looking animals.

You've got to see them to not believe them.

Now American Airlines can take you to them. (Fiji, New Zealand, Samoa, and Hawaii too. Though not necessarily in that order.) And you can pay for it all with your American Express Money Card, over an extended period of time.

But it's a good idea to call your Travel Agent before you go.

He probably didn't believe Australia himself. And although he may still have some doubts of his own, he can do a lot to assuage some of yours. About hotel accommodations. Tickets. And even where's a good place to eat.

Or call us. American Airlines.



It's good to know you're on American Airlines



White Shoulders by Evyan.



©EVYAN PERFUMES INC. 1970







Recording session for the Busoni Piano Concerto which, in addition to utilizing the soloist and a large orchestra, requires the services of a chorus. A multiple microphone setup — seven mikes are visible in this photo — is used. EMI/Angel photo.

(continued from p.13)

After the recording itself has been accomplished there may or may not be a process called mixing. In popular music there almost invariably is; in classical music it is sometimes not necessary. Mixing is simply the process of finally establishing those balances and directionalities that have not been decided on at the recording session, and, at the same time, reducing those three, nine, or sixteen different tracks to two. With the proper mixing equipment, any given track may be slotted for full left, full right, or half and half (center), and, of course, one may vary the percentages, producing  $\frac{2}{3}$  left,  $\frac{3}{4}$ , etc. Theoretically, the process seems simple. But due to a certain acoustic and/or electronic factor called phase (which is too complicated to go into here) it sometimes doesn't work. And that is why one oftentimes hears from records pianos whose keyboards seem to be twelve feet across, clarinets that seem to wander all over the room, and bass fiddles whose sound resembles nothing so much as a ukulele played under a pillow. Mixing can be a very difficult and frustrating job — and, in case the money idea has passed from your mind by this time, mixers are hired by the hour and are paid very well.

The last really critical process a master tape goes through before being made into a record is editing. Editing is probably the most fascinating and certainly the most misunderstood aspect of modern recording technique. In the days of 78 rpm records there was no such thing as editing; if the artist made a mistake it either stood as a permanent document or he made the entire four- or five-minute disc over again. Today, by means of tape, a razor blade, a score, and a sharp ear, it is possible to remove a single offending note from the most whirlwindish piano passage and replace it with the correct note. That is, it is possible if the pianist was able to play the correct note at *some* time while the tape recorder was spinning. Editors have been accused of making virtuosos out of also-rans. The accusation, though resting on a core of truth, is largely unjust; all the editor can do is to produce the best performance of which the artist is capable, by using the best "take" of each long or short segment of the music. But even this can produce astonishing results at times.

There is the infamous example of a record made at one time by an ama-





Lunch 11:30 A.M. to 6 P.M. Dinner  
6 P.M. to 1 A.M. Brunch weekends  
and holidays 10 A.M. to 3 P.M.  
1944 Union St. Phone: 922-9022.

*Precious Jewels*

**KLAUS MURER**

Swiss Designer



*Received the 1970 Diamonds -  
International Award . . . the  
Oscar of Jewelry Designs.*

359 Sutter

• 391-0942

**Flavor  
of  
Japan**

Luncheon • Cocktails • Dinner • Daily  
Japan Center • 1737 Post Street  
San Francisco • 922-6400  
Validated Parking

 **SUEHIRO**

**BEFORE THE THEATER**



**THE PAVILION**  
Lunch • Dinner • Cocktails • Sunday Brunch  
2400 POLK AT UNION • ORDWAY 3-5344



*Left to right: EMI/Angel producer Peter Andry, violinist David Oistrakh and the late George Szell listening to the playback of the final take for their recording of the Brahms Double Concerto. Not pictured is the other soloist in the recording, cellist Mstislav Rostropovich.*

teur choir of an exceedingly difficult piece of contemporary choral music. The choir sang the piece one syllable at a time and recorded each syllable four times. After the recording session was over, the record producer and the choir director selected the best take of each syllable, and the editor put the master tape together literally one note at a time. The result was a perfect performance of the difficult work — so perfect, in fact, that in the final recording one's attention was overwhelmingly drawn to the fact that the singers, throughout the course of a forty-minute work, never breathed once.

Even with such miscalculations, editing has a definite point. Perhaps the most singular characteristic of a record is that, unlike a concert performance, it is repeatable. Therefore, an obvious wrong note, which is heard one instant and gone the next in live performance, becomes a constantly anticipated annoyance on a record, like stubbing your toe against the same warped floorboard every time. One's attention gets drawn more and more to the mistake, and finally one loses all joy in the record, not being able to hear the fantasy for the fingerslip. The simple, if delicate operation of physi-

cally removing a piece of tape from the master recording and replacing it with one from another take eliminates the difficulty. But it is not always accomplished with the same ease; different instruments, or different combinations of instruments sometimes make such a task difficult or impossible. A successful editor has learned his skill through experience. He knows what he can do, what he can take a gamble on, and what he must leave alone; for the attempt to improve will only irreparably ruin what is there. Needless to say, he gets paid for his experience and expertise.

Once the final edited master tape has been made, the succeeding procedures in record processing are largely mechanical — which is not to say that there are not a million things that can go wrong. The next step is cutting the master disc from the tape. A few companies cut directly from the edited master tape (which involves some risk, but most make a tape copy of the master, grudgingly allowing the tiny extra bit of distortion that comes from adding one more step to the process, and have the master disc cut from that. A blank disc, of glass or metallic base with a special lacquer coating, is placed on a lathe-driven turntable,



# Good Show!



## Take a leading role on the SAS "FOOTLIGHT HAPPENINGS" TOUR to Copenhagen and London.

From \$428\*

Take the tour and for 2 weeks all the world is a stage and you the leading player. *Copenhagen*—with 2 tickets to the Royal Ballet, Opera and/or Symphony. Then make the all-night scene at the most popular nightclubs. *London*—with tickets for 4 leading plays and musicals. (Even a visit backstage!) And membership in a posh gambling casino—where the odds are on fun! Clip the coupon and send away for more facts.

\*Based on Group Inclusive Tour Fare including economy round-trip air fare between New York, Copenhagen and London. All transfers, Accommodations with private baths for 13 nights. Attractive Optional Extras. Weekly departures beginning October 3rd.

SAS, Box 3443, Grand Central Station, New York, N.Y. 10017 A2

Bravo! Your SAS "Footlight Happenings" Tour sounds great. Please send me your brochure.

Name \_\_\_\_\_

Address \_\_\_\_\_

City \_\_\_\_\_ State \_\_\_\_\_ Zip \_\_\_\_\_

My Travel Agent is \_\_\_\_\_

Let yourself go to the theatre on **SAS**  
SCANDINAVIAN AIRLINES

and the electronic impulses from the tape are amplified and fed to a recording head and cutting stylus which engraves their physical equivalent in a series of modulated grooves. The stylus is aided by a heating element which momentarily softens the lacquer. A certain standard equalization of the frequency response is effected in the amplifier, reducing the bass and accentuating the treble. There are several reasons for this. Bass wave forms, being large, are both difficult to engrave on the disc and difficult for the playing stylus of the home phonograph to follow. The louder they are, the more difficult; therefore, they are temporarily reduced in loudness. The high frequencies are accentuated because when a record is played back, friction produces surface noise and that noise is in the treble range. If, therefore, the high frequencies are accentuated on the record, and reduced back to normal by the playback equipment (all playback equipment has such equalization built in) surface noise is reduced too. The playback equipment similarly amplifies the bass in an amount corresponding to the amount it was reduced, thus restoring the original balance of the master tape. Cutting, though largely automated today, is still a tricky job, reserved for highly skilled technicians.

Once the master disc is obtained, it is plated. This is a process of permanently covering the disc with a thin metallic film which follows exactly the



The ultimate in recording balance results from employing separate microphones for the voice and guitar of Jose Feliciano. RCA photo.

## "Stu" Adams

invites you to enjoy dining in the famous old San Francisco tradition



**NO FINER FOOD ANYWHERE**

LUNCHEON • DINNER

# Bardellis

STUART ADAMS  
Mgr. Owner  
LOUIS MEYER  
Co-Owner

243 O'FARRELL • near Powell • YU 2-0243

STUDY SINGING with

San Francisco's Renowned

**J. ARTHUR  
RANDLETT**  
*Famous Voice Expert*

Opera — Classical — Popular

Beginners and Advanced

"Teacher of Outstanding Singers"

465 GEARY ST. (second floor)  
776-6918

"the home of Steaks  
par excellence"



## Le Boeuf

DINNER AND AFTER  
THEATRE DINING  
PIANO BAR

550 GEARY

in the El Cortez Hotel  
Telephone 771-5515

All Major Credit Cards Honored

Smartest  
after-theatre-spot  
in town



**Yellow Cab**  
626-2345





Largest Selection of San Francisco Charms



MEMBER AMERICAN GEM SOCIETY

**sidney mobell**  
Designer and Creator of Fine Jewelry

141 POST STREET  
SAN FRANCISCO • 94108

French Cuisine

**La Gare**

475 FRANCISCO ST.  
Reservations 986-1180



Lighthouse, the Canadian rock band, records amid a mass of electronic hardware. RCA photo.

To reserve  
a Hertz car  
anywhere  
in Florida, call this  
toll-free number:  
**800-654-3131.**



Since it's the in-season in Florida,  
call this number before you leave or ask your travel agent  
to do it for you.

Then when you get to Florida,  
there'll be a Ford or similar sedan waiting for you  
instead of you waiting for it.



**You don't just rent a car. You rent a company.**

groove patterns of the lacquer but greatly strengthens them. Through a series of plating and stripping processes, stampers are obtained, stampers being exact mirror images of the master disc, used as molds to produce the final commercial pressings. The final process occurs when the stampers (for side one and side two) are placed in the press, labels for both sides are inserted, and vinylite (usually) in wafer, powder, or semi-liquid form is put into the mold, heated, and stamped with the impressions of the grooves. The vinyl is cooled, the press opened, and the final record removed to be checked, packed in its sleeves, and shipped to the distributor or store.

Such is the manufacturing cycle of the record. The physical product you have in front of you costs, perhaps, thirty cents — a pittance. But the varied skills that went into it are priceless — which is not to say they are costless. After one pays the artist, the producer, the engineer, the mixer, the editor, the cutter, the plater, the presser, the artist who designed the jacket and the printer who printed it, it is a wonder that there is any money to be made in records at all. In classical music, there very likely isn't. It just gets all ground up in the grooves of the record, and you hope, that when all is said and done, it at least smells like wine and not like vinegar. □

Mr. Goodfriend, who has been involved in various facets of the record business for some years, was one of the founders of Connoisseur Society Records. Mr. Goodfriend is currently Music Editor of Stereo Review. He is an avid collector and critic of wines as well as of records.



# the hamlet syndrome

by LEONARD LYONS



At a dinner party in Hollywood one night, I heard Ernest Lubitsch talking to a young actress about the Theatre, its playwrights and Hamlet. The young lady asked: "What's a Hamlet?" Lubitsch winced, then told her it was the name of a play.

"Hamlet?" said the young actress. "What a funny name to pick for a play..."

Hamlet always has been the dream and most challenging role for all performers everywhere.

When George Grizzard resigned from his co-starring role in Edward Albee's *Who's Afraid of Virginia Woolf?*, Billy Rose asked why he was leaving the play which then was Broadway's No. 1 hit. Grizzard explained that he was leaving for Minneapolis to play *Hamlet* for Tyrone Guthrie.

"Now I understand," said Rose. "To an actor, Hamlet is Hedy Lamarr blowing hot in your ear."

One day, in an Actors Studio experiment with *Hamlet*, Robert Webber noticed a minor actor staring at him — and then suddenly beaming. Webber asked him to analyze this sudden change of expression, from a stare to an improvised beam.

The young actor, in true Studio fashion, spoke frankly about this: "I kept looking at you, Hamlet, wondering

why you seemed familiar, and then it suddenly came to me — we went to the University of Denmark together."

Tyrone Power once told the story of a young actor playing the role of Osric, a courier in *Hamlet*. He mentioned his work to another novice, who said he'd never heard of *Hamlet*. The first actor was incredulous, but the novice vowed: "I swear, I've never heard of Hamlet. What's the plot?"

"Well, you see," the first actor began, "there's this fellow Osric..."

Mae West confided that when she had the urge to play Shakespeare, she discussed it with a noted Broadway director. He assured her that no Shakespeare role was suitable. "Oh, yeah?" Miss West said. "How about *Hamlet*?"

Cyril Ritchard played Hamlet at school in Australia. Orson Welles played Hamlet at Dublin's famed Gate Theatre when he was seventeen. Eddie Foy, Jr., said that even his father, Eddie Foy, Sr., who led the Seven Little Foyes across the nation's vaudeville stages for years, once tried playing Hamlet, seriously. The senior Foy took his Hamlet to Boston for a tryout, and the audience laughed and laughed.

Maurice Evans' *Hamlet* was produced by Michael Todd. At the end of the first act, on opening-night, I saw Todd standing next to Toots Shor in the lobby. Shor bellowed to me: "I'm the only one here who doesn't know how this is gonna turn out. Todd knows how it ends, but only because he saw a rehearsal."

When Laurence Olivier produced, directed, wrote and played the title role in the movie version of *Hamlet*, he included a scene he knew would be cut by the censors. "I know they'll cut it," he said, "but it will be good for the censors to see."

Walter Huston always advised young actors who sought his counsel that they should start by learning *Hamlet* thoroughly. Frank Thomas, Jr., once said to Huston: "I did as you told me. In fact, I read *Hamlet* not once, but twice."

"Young man," Huston replied, "I can't start to discuss *Hamlet* with you until you've read it at least twenty-five times."

"I've read *Hamlet* over and over again, countless times," said Jean-Louis Barrault, the French star. "I've played *Hamlet* for over twenty-five years, but it's always exciting to start rehearsing it again — because each time I find something new to do, some new way to speak the lines."

Kelcey Allen told me this story when

we both attended the Broadway premières—in the same season—of rival *Hamlet* productions starring John Gielgud in one, and Leslie Howard in the other.

Gielgud's company included Murvyn Vye, then fresh from Yale's Drama School. Vye had a one-word role and, at the dress-rehearsal he spoke his one word resonantly. Then he received a message that Gielgud wanted to see him.

Vye rushed to the star's dressing room. "About that word," Gielgud said. "When you speak it — keep your shadow off my face."

Leslie Howard's *Hamlet* was denounced by the critics, who compared it unfavorably with several other Hamlets, particularly Barrymore's. Just before Howard ended the Broadway run and returned to England, we met at the bar of the 21 Club where he told me, somewhat wistfully, that John Barrymore had warned him: "Every critic is going to compare your Hamlet with mine, and they'll say mine was magnificent."

"Honestly," said Barrymore, "mine was the hammiest performance ever given."

The fabulously wealthy social leader, Laura Corrigan, saw both the Gielgud and Howard productions that season, and was asked which one she preferred. "I enjoyed them both," was her haughty and memorable reply. "I like Hamlet very much. You see, I happen to be a friend of the King of Denmark."

In London a few years ago, when Peter O'Toole did *Hamlet* for Britain's then-new National Theatre, he told me about assorted actors who had played the role. O'Toole mentioned an actor who did *Hamlet* readings for either \$30 or \$32 a performance.

When the Hamlet was asked the difference between these two performances, he said, "For \$32, I bring my own skull."

The late star of the Yiddish theatre, Maurice Schwartz, produced and starred in a Yiddish version of *Hamlet* for many years, all over the world. Lou Jacobi once mentioned to him that Maurice Evans was planning to do *Hamlet* on Broadway, and asked Schwartz how he thought it would be received.

Schwartz shrugged: "In English? Who knows?" □





# CALMS TAPE TENSION.

Headache? Take aspirin.

Tape tension trouble? Take TEAC.

For instance, take the A-6010U stereo tape deck here – with its unique tape tension control system: an inertial flywheel and compliance arm for precision record/playback running speeds and smooth, fast winding. This system helps reduce external factors contributing to wow and flutter, such as warped reels and splices.

TEAC offers fast relief for other common complaints, too: unique *phase sensing auto reverse* operates electronically at any chosen point on the tape, or takes a sensing foil if you'd rather. Separate heads permit *source- or off-the-tape monitoring while recording* for easy A/B comparisons. And our exclusive *symmetrical control system* makes tape handling logical and easy – fast or slow, forward or back, at a flick of the finger.

This tape deck can't cure everything that ails you, but you're bound to feel better once you own one.

## TEAC

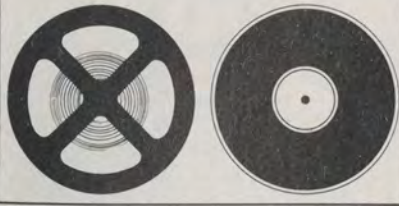
TEAC Corporation of America • 2000 Colorado Avenue • Santa Monica, California 90404





# STEREO

by JOHN MILDER



**LUXURY AT (SLIGHTLY) LOWER PRICES:**  
Volume Two, Part Ten of the Performing Arts Guide to Stereo Components.

If you are a cost-no-object sort, it's easy enough to buy your way out of the problem of choosing stereo equipment. Except in the case of loudspeakers, where it can be argued that going beyond a certain price brings you less quality (in the form of outmoded but still super-expensive models), one can safely go the route of buying the component that's three times as expensive as all the others.

But if you have to pay attention to money for one reason or another, there is equipment of undeniable luxury that doesn't cost as much as some other equipment of undeniable luxury. In some cases, the luxury tag applies only to pure performance — with amenities missing that might well be important for some conditions of use. But in others, everything anyone could conceivably need may be found at substantially lower cost.

What follows is my own notion of lower-priced luxury in various component categories, with explanations. The list isn't all-inclusive, and isn't intended to be all-exclusive of other equipment. Hopefully, it may simply prove pertinent to some people's imminent decisions on sound vs. money.

In record-playing equipment, the outstanding bargain to my mind (and the most venerable one to be found) is Acoustic Research's AR Turntable. The AR unit is not an unalloyed delight: I don't know why, after almost ten years, the company can't contrive a simple mechanism to lift the tone arm at the end of the record, or why it doesn't offer (as an extra-cost option if necessary) a hinged dust cover that could keep things covered while the blasted record plays. But at roughly \$90 (including arm, base, and lift-off dust cover), it is a wonderful bargain for sheer performance, and is the unit I keep returning to after flirtations with far more expensive gear. The AR turntable supplies the quietest back-

ground for record-listening I've ever heard, and often produces a startling gain in audible clarity when substituted for another unit of seemingly impeccable quality. And since I keep saving money by going back to it, I'll happily pay millions to someone for an automatic arm-lift and a hinged cover.

I wish I could discover a pickup of bargain nature in the highest performance category, but so far the best all cost accordingly. The Grado Model B, often to be found for less than \$10, almost makes it, but hasn't quite the transparent sound quality of the super-expensive cartridges to my ears, and doesn't track at quite as low a stylus force.

Out of the thousand or so stereo receivers that seem to be on the shelves of most audio stores, the one that best suits my notion of everything needed at the center of a stereo system is Kenwood's TK-140X. This unit has presumably been superseded by a newer model (at \$60 more), but it's still to be found in most stores, and I wouldn't be surprised to find Kenwood forced to keep it going despite the newer model. What makes the TK-140X unique to my mind is that, at \$319.95, it supplies all the power and FM performance and control flexibility I can conceive of anyone really needing in a home. You have to spend roughly half-again its price to get significantly better performance in any area, and I'm not convinced that the increase would be a *useful* one.

With the tremendous variety now available in receivers, and the performance of units like the TK-140X, the traditional combination of separate electronic components — pre-amplifier, power amplifier, FM tuner — no longer represents the only route to "ultimate" performance. Its chief appeal now (aside from the ego gratification represented by row on row of knobs) is added flexibility and the ability to update things one at a time as the technology continues to change. The premium payable for that these days is formidable, and the popularity of receivers has driven out most of the less-than-outrageously-priced units. About the only exception these days, and a genuine bargain in most instances, is Dynaco's "kit" equipment. (The quotes are meant to indicate that many Dynaco buyers — maybe most of them — don't actually build the Dyna kits for themselves, but buy the "factory-wired" versions.) The com-

ANTIQUES, FINE ART AND  
EXTRAORDINARY GOODS  
FROM THE PHILIPPINE ISLANDS



1549 CALIFORNIA  
AT POLK

TELEPHONE  
776-4835

## DISTINCTIVE INTERIORS

DICKIE  
ASSOCIATES  
INTERIOR DESIGN STUDIO  
357A GRAND AVE.  
OAKLAND  
PHONE 452-3112



### KENWOOD KW-8077 STEREO TAPE DECK

Incomparable sound ■ Automatic reverse  
record/playback plus continuous automatic  
repeat playback ■ Optional Remote Control  
... \$629.95

For complete specifications write . . .

 **KENWOOD**

15711 S. Broadway, Gardena, Calif. 90247



# Chris' Foghorn

453 Bush St., San Francisco, Ca 94108

SEA FOOD



Cooked to order

ATMOSPHERIC DINING

Luncheons • Dinners

Monday thru Friday • 433-7483

## Chez Leon

restaurant francais

Fine French Food



Romantic Atmosphere

Lunch • Dinner • Cocktails

124 Ellis Street

call for reservations

YU 2-1093

(1/2 block from Hilton)

**Marimekko Fabrics**  
by the yard, rugs,  
toys, glasses and  
dishes, furniture,  
kitchen pots, ties,  
dresses and shirts  
**Design Research**  
Ghirardelli Square  
Telephone 776-2605  
Hrs.: 10-6, Mon-Sat.

## Old Zurich

SWISS RESTAURANT

*Our Specialties*

Cheese and Beef Fondues

Dinners Nightly except Monday

605 Post St. near Taylor • 885-5540

combination of a Dynaco PAT-4 preamplifier and Stereo 120 power amplifier costs about \$250 in kit form and \$330 wired, and offers basic sound quality for those prices that is hard to imagine being improved significantly. The control facilities of this combination are not as elaborate as others (or even those of many high-priced receivers), but the combination of basic performance and performance-per-dollar is hard to beat.

In view of the subjective considerations involved in choosing a speaker, it is unlikely that any one unit would meet everyone's notions of ultimate excellence. But the bargain that is hardest to argue in the most-ambitious-system category is the Advent Loudspeaker. (No model number, just the name.) I can't claim objectivity here, since I've been associated with the designer (who previously was a founder both of AR and KLH). But I know what my ears tell me, which is that, at \$125 (or less for a "utility" version), it is as big a bargain as anything I've come across in audio, easily competing with far more expensive systems.

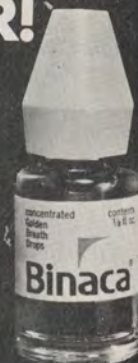
In tape equipment, the trend is toward increasingly expensive "top-of-the-line" open-reel recorders. But the two machines that impress me most are both in the middle, somewhere around \$300. They are Tandberg's 3000X and TEAC's A-1200U. In electronic quality, particularly at low tape speeds, I would give the Tandberg a slight edge, and would assign the same margin of superiority in mechanical performance to the TEAC. There are many far more expensive machines (including ones from the same companies) that are better suited to certain recording needs as certain cameras are to photographic applications, but for basic sound quality for home recording it seems unnecessary to pay more.

If you add up the prices for the components I've mentioned, you will find the total is walloping for a supposed bunch of bargains. But bargains they remain. For the record, I haven't attempted to outline a "dream" system or even my own (I have some of the units mentioned, but not all). What these units add up to in a stereo system is simply something worth a good deal more than the sum of their price tags. □

**FOR ADDITIONAL INFORMATION ON PRODUCTS MENTIONED IN THIS SERIES, WRITE: "STEREO", PERFORMING ARTS, 147 SOUTH ROBERTSON, BEVERLY HILLS, CA. 90211. YOUR REQUESTS WILL BE FORWARDED TO THE APPROPRIATE MANUFACTURERS.**

**EAT & DRINK,  
SWIM, RIDE,  
PARK,  
PLAY, LAUGH,  
SING,  
KISS, FIGHT,  
MAKEUP,  
LOVE, FLIRT,  
HUG, DANCE,  
CELEBRATE, DO  
EVERYTHING...  
TOGETHER!**

**BINACA<sup>®</sup>  
IS IN...  
BAD  
BREATH  
IS OUT.**



**VERY PORTABLE. VERY POWERFUL.**

*Wait, I've  
changed my mind.  
I'll have a  
Kahlúa Stinger.*



THESE AUTHENTIC PRE-COLUMBIAN FIGURES ARE FROM THE FAMOUS KAHLÚA COLLECTION.



1 3/4 oz. Kahlúa, 3/4 oz. white  
creme de menthe  
on the rocks.

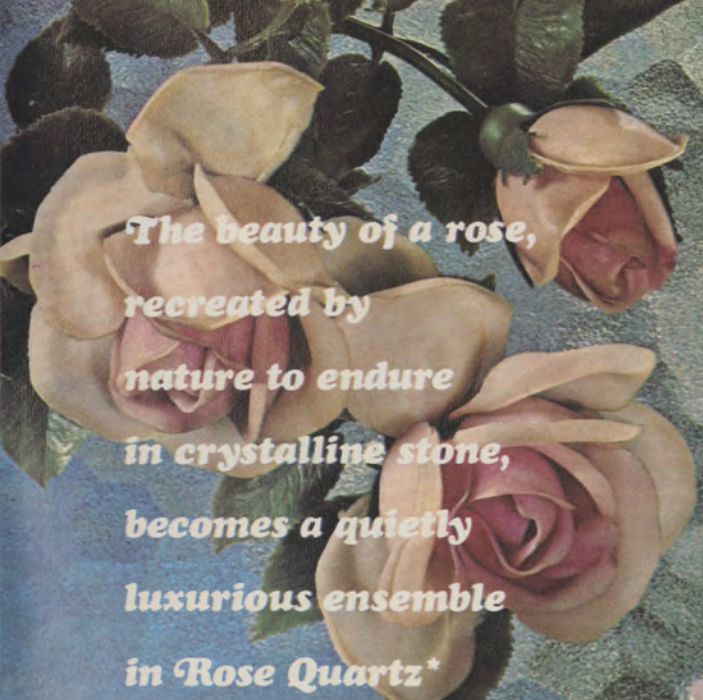
**KAHLÚA**  
53 PROOF

coffee liqueur  
from sunny Mexico

*Write for free recipe book.*

JULES BERMAN & ASSOC., INC.  
116 NO. ROBERTSON BLVD., LOS ANGELES, CALIF.





*The beauty of a rose,  
recreated by  
nature to endure  
in crystalline stone,  
becomes a quietly  
luxurious ensemble  
in Rose Quartz\*  
for the home where  
beauty is  
essential and, also,  
perfectly natural.*

*\*From the Gem Collection  
by Artistic Brass*

ROSE QUARTZ ENSEMBLE  
SET IN 24K GOLD PLATE—\$875



ARTISTIC BRASS, INC.  
A SUBSIDIARY OF NORRIS INDUSTRIES



3136-48 East 11th Street, Los Angeles, California 90023, Telephone (213) 268-3437





20 FILTER  
CIGARETTES

# Silva Thins has less tar.

\* Less than other 100's Less than most kings.  
Yet better taste!



*Silva*  
**THINS**

The one that's thin and rich.

\*ACCORDING TO THE LATEST U.S. GOVERNMENT FIGURES.



THE SAN FRANCISCO OPERA GUILD

*presents*

# YOUR 1970 FOL DE ROL VARIETY SHOW

WORLD FAMOUS OPERA STARS

DANCERS GALORE                      JAZZ

COUNTRY & WESTERN MUSIC

MARATHON ENTERTAINMENT

**A SHOW OF SURPRISES  
GUARANTEED TO PLEASE**

Sunday, November 15th  
CIVIC AUDITORIUM

Show starts 7:00 p.m.  
Doors open 5:30 p.m.

Balcony Seats from \$1.50

Dress Circle \$7.00

Rates for students and groups of ten or more

*Tickets may be obtained from:*

OPERA SYMPHONY BOX OFFICE  
141 Kearny Street, S.F. 397-0717

OPERA HOUSE BOX OFFICE  
Opera House, Civic Center, S.F. 626-8345

SHERMAN & CLAY BOX OFFICE  
2135 Broadway, Oakland 444-8575

and most Bay Area ticket agencies

THE BLACK RAVEN PIPE BAND    MARY COSTA    SHIGEMI MATSUMOTO    BALLET    DOMINIC COSSA

SHIGEMI MATSUMOTO    THE BLACK RAVEN PIPE BAND    SURPRISES    DOMINIC COSSA    BALLET



