

Le Nozze di Figaro

1950

Friday, September 29, 1950 8:00 PM

SFO_PUB_01_SFO_1950_08

Publications Collection

San Francisco Opera Archives

TWENTY-EIGHTH ANNUAL SEASON

SAN FRANCISCO
OPERA
ASSOCIATION

GAETANO MEROLA
GENERAL DIRECTOR
PAUL POSZ, MANAGER



WAR MEMORIAL OPERA HOUSE
SEPTEMBER 26 THROUGH OCTOBER 29, 1950



*Y*ou are sure
of superb fur fashion
. . . enduring quality
. . . when you make
that important decision
. . . the choice of
your fur coat! Be sure
it wears this label.

Livingston Bros.

GRANT AVENUE
AND GEARY

SAN FRANCISCO TRADITION



BEFORE THE OPERA

*...Buffet Dinner in
the beautiful Garden Court.*

AFTER THE OPERA

*...Light Supper and
dance to the gay rhythms of
WALT NOBRIGA and his orchestra
in the Palace Corner.*

NO COVER CHARGE

The Palace Hotel

EDMOND A. RIEDER, GENERAL MANAGER



renata

TEBALDI

long-
playing
ffrr*

LONDON

W & J

SLOANE



One of the most exciting recordings in years! Miss Tebaldi sings arias from "Aida", "Faust", "Madam Butterfly", "Tosca" and others . . . all on one London long-playing record! Also choose from many other splendid operatic recordings on London long-playing records at Sloane's, including recitals by GIUSEPPE VALDENGO and EUGENE CONLEY. Write, phone or come in for yours . . . tomorrow!

RECORD SHOP • 2ND FLOOR • 216 SUTTER NEAR GRANT

*Full frequency range recording

Telephone GARfield 1-2827

Writing Your Will

YOUR ATTORNEY WILL HELP YOU

IF you put into writing the various things you have planned to do; if you have consulted a competent attorney who will carry out your instructions, you may wield an influence and extend a protecting hand long after you have been called away.

Make The San Francisco Bank the executor of your will.

THE SAN FRANCISCO BANK

Savings Inc. Feb. 10, 1868 • Member Federal Deposit Insurance Corporation **Trust**

526 California Street and 405 Montgomery Street, San Francisco

EIGHT COMPLETE OFFICES . . . SIX IN SAN FRANCISCO • OAKLAND • BURLINGAME

PARKER S. MADDUX, PRESIDENT



GAETANO MEROLA
GENERAL
DIRECTOR
SAN FRANCISCO OPERA COMPANY

RCA VICTOR

THE ULTIMATE IN

SUPERB ARTISTS



LICIA ALBANESE

Don Pasquale: Act I: Recitative. Quel guardo il cavaliere; Aria: So anch' io la virtù magica (Donizetti)

The Marriage of Figaro: Act IV: Recitative. Giunse alfin il momento; Aria: Deh vieni, non tardar (Mozart).

Madama Butterfly: Act I: Ancora un passo or via (Puccini). Act II: Con onor muore.

La Boheme: Act I: Mi chiamano Mimi (Puccini)

Suor Angelica: Senza Mamma bimbo tu sei morto (Puccini).



ITALO TAJO

The Marriage of Figaro: Act I: Non Piu Andrai (Mozart)

The Barber of Seville: Act II: La Calunnia (Rossini).

RIGOLETTO . . . the complete opera recorded in all three speeds. Other artists include Jan Peerce, Erna Berger, Leonard Warren, Nan Merriman. "Highlights from Rigoletto" also available.



FOR A
LIMITED TIME . . .

See your RCA VICTOR Dealer Right Away . . .

House of Records

One of San Francisco's Most Complete
Record Stores

Mail Orders Filled - Free Local Delivery

PROspect 5-9974
1806 POLK STREET
Near Washington

Ross-Cameron Record Center

331 BUSH STREET
Between Montgomery
and Kearny

We take pride in—
the completeness of our
stock
our individualized and
competent service
Phone YUkon 6-0319
San Francisco 4, Calif.

THE RECORD ALBUM

"Everything in Recorded
Music"

Radios-Phonos-Television
3310 Lakeshore, Oakland
TEmplebar 2-5656

offers you . . .

RECORDED MUSIC

these members of the San Francisco Opera Company are only a few of the distinguished artists who record exclusively for RCA Victor.

GIUSEPPE DI STEFANO

Mignon: Act II: Addio, Mignon!
Fa core! Ah! Non credevi tu!
La Traviata: Act II: Lungi da
Lei and Dé Miei Bollenti Spiriti
(Verdi).

La Tosca: Act III: E lucevan le
stelle (Puccini)

A' Barcillunisa (Sicilian Folk
Song)

Cantu A Timuni (Sicilian Folk
Song)



KIRSTEN FLAGSTAD

Haugtussa (Grieg). Album avail-
able on all three speeds.

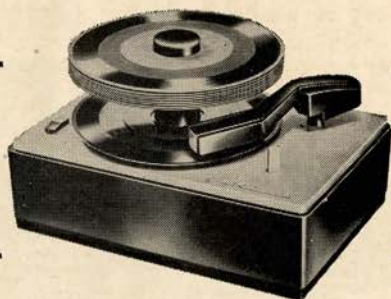
Tannhauser: Act III: Elisabeth's
Prayer (Wagner) (Part I).

Act III: Elisabeth's Prayer (Wag-
ner) (Part II).

I N C O M P A R A B L E F I D E L I T Y

Now you can carry the full real-life beauty of the opera stage right into your own home. With the "VICTROLA"* "45" the music is reproduced just as it was sung . . . recorded only in the "distortion-free" zone of the record. This new "VICTROLA"* "45" is compact, easy to operate, and so inexpensive. It plugs into your present phonograph or radio.

* T.M. Reg. U.S. Pat. Off.



To introduce you to the new world of distortion-free "45" music, RCA Victor is offering this special bonus offer. When you buy the 45J you get 6 coupons which entitle you to one of the latest RCA Victor record releases. . . . one each month for 6 months. You can choose any of the latest releases . . . classical, popular, semi-classical. All this . . . the Victrola "45" record player and 6 records for the price of the record player alone.

These RCA Victor dealers are ready to help you:

A. CAVALLI & CO.

Since 1880

1441 STOCKTON ST.

Specializing in Italian
Records and Operas

Open Eves till 9

Garfield 1-4219

CALIFORNIA MUSIC HOUSE

1560 California Street
San Francisco

TUxedo 5-1200

For Your Copy of the
New Illustrated Television
Brochure

CITY OF PARIS

San Francisco, California

DOuglas 2-4500

Radio-Record Salon
Mezzanine

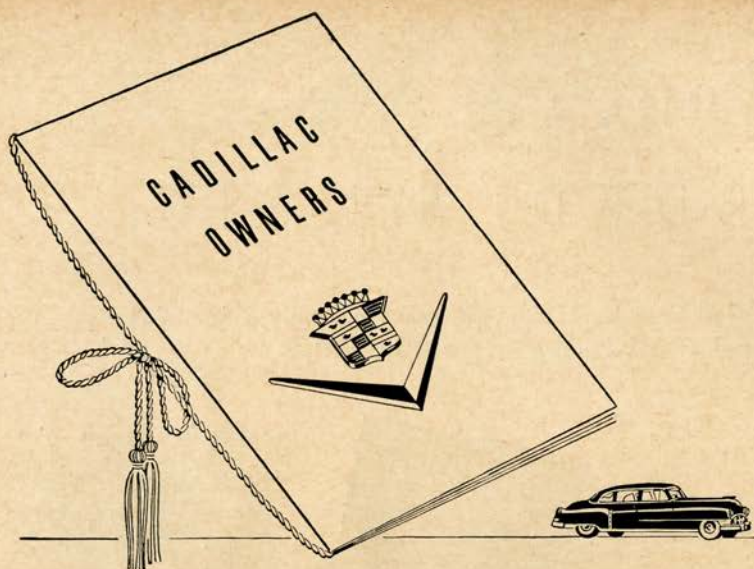
ANDY JOHNSTON RECORD ROOM

FAIRMONT HOTEL

Classical & Popular
Records

Open: 12 to 12

SU 1-8823 DO 2-8800



No Finer List of Names On Earth!

If you had in your hand a list of all the people in the world who own and ride in Cadillacs, we think you could search in vain for another list of equal size—and similar distinction. . . . Cadillac is the great common meeting ground for the world's distinguished people. Wherever the car is available, it has become

almost the automatic companion for outstanding personal achievement. . . . Naturally, only long-continued goodness could have placed Cadillac in such an enviable position. Its owners are too numerous, too varied and too intelligent to have been won and held by anything save Cadillac's quality alone.



The Series Sixty-One Sedan

YOUR *Cadillac* DEALER

SAN FRANCISCO OPERA ASSOCIATION



OFFICERS

KENNETH MONTEAGLE
President

MRS. STANLEY POWELL
Vice-President

ARTHUR MERRILL BROWN, JR.
Vice-President

CHARLES R. BLYTH
Vice-President

GEORGE T. CAMERON
Treasurer

PAUL POSZ
Secretary

BOARD OF DIRECTORS

CHARLES R. BLYTH
ARTHUR MERRILL BROWN, JR.
STARR BRUCE
GEORGE T. CAMERON
WILLIAM W. CROCKER
MORTIMER FLEISHACKER
MARCO F. HELLMAN

BRUCE KELHAM
ROBERT WATT MILLER
KENNETH MONTEAGLE
JOHN FRANCIS NEYLAN
MRS. STANLEY POWELL
MRS. HENRY POTTER RUSSELL
J. D. ZELLERBACH

EXECUTIVE STAFF

GAETANO MEROLA
General Director

CURRAN SWINT, *Publicity Director*

PAUL POSZ
Manager

ARTHUR FRAHM--ERIC RAHN
Ticket Sales

PHYLLIS AMATI
Season Tickets

EVELYN CROCKETT--GWEN TRUDEAU--CLADE VON BESSER
Office Secretaries

THE

Capehart

FRENCH
PROVINCIAL



Your Capehart dealer will welcome the opportunity to demonstrate the new Capeharts for you. We are sure your visit will prove interesting — and that you'll be amazed at the modest prices of the magnificent 1951 models at the City of Paris

Phonograph plays all speeds, types, sizes of records, automatically. AM-FM radio. Record storage compartment. French Provincial model (above) styled in cherry with fruitwood finish—33x34x18 inches.

City



Paris

O'FARRELL AT STOCKTON, SAN FRANCISCO

BOARD OF GOVERNORS

P. A. BERGEROT
CHARLES R. BLYTH
J. BRENDAN BRADY
H. SEWELL BRADLEY
ARTHUR MERRILL BROWN, JR.
STARR BRUCE
GUIDO CAGLIERI
MRS. GEORGE T. CAMERON
GEORGE T. CAMERON
CHARLES A. CHRISTIN
WILLIAM W. CROCKER
GEORGE E. CROTHERS
MRS. FRANK P. DEERING
MISS MARY C. DUNHAM
SIDNEY M. EHRMAN
MRS. WILLIAM M. FITZHUGH
MORTIMER FLEISHHACKER
RANDOLPH HALE
REUBEN B. HALE
MRS. LAWRENCE W. HARRIS
J. EMMET HAYDEN
TIMOTHY HEALY
MARCO F. HELLMAN
EDWARD D. KEIL
BRUCE KELHAM

CHARLES H. KENDRICK
MRS. MARCUS S. KOSHLAND
LEWIS A. LAPHAM
MRS. STINE LEIS
MRS. DONALD MAC LEOD LEWIS
M. E. LOMBARDI
WILLIAM GLADSTONE MERCHANT
MRS. C. O. G. MILLER
ROBERT WATT MILLER
KENNETH MONTEAGLE
GUIDO MUSTO
MRS. JOHN FRANCIS NEYLAN
JOHN FRANCIS NEYLAN
RALPH H. PHELPS
MRS. STANLEY POWELL
STANLEY POWELL
MRS. LEON RICHARDSON
MRS. HENRY POTTER RUSSELL
A. SBARBORO
MRS. M. C. SLOSS
RALPH J. A. STERN
MRS. SIGMUND STERN
RANDOLPH C. WALKER
WHITNEY WARREN
J. D. ZELLERBACH



WAR MEMORIAL OPERA HOUSE

(OWNED AND OPERATED BY THE CITY AND COUNTY OF SAN FRANCISCO
THROUGH THE BOARD OF TRUSTEES OF THE WAR MEMORIAL)

BOARD OF TRUSTEES

SIDNEY M. EHRMAN
President

BEN BAGGENSTOS
FRANK A. FLYNN

RICHARD H. NEWHALL
Vice-President

SAM K. HARRISON
WILBUR A. HENDERSON
MELVIN I. HERTZ

DAN S. HEWITT
MILTON W. KLETTER
GUIDO J. MUSTO
RALPH J. A. STERN

EDWARD SHARKEY
*Managing Director of
The War Memorial*

E. LAWRENCE GEORGE
*Secretary to the Board
of Trustees*

Buffet Service in Basement Promenade and Dress Circle during all performances

LIBRETTOS AND OPERA GLASSES IN FOYER . HEAD SETS FOR THE DEAF ARE AVAILABLE
AT TABLE IN MAIN FOYER . ATTENDANT WILL CONNECT WITH SEAT LOCATION UPON
REQUEST . FOR LOST AND FOUND INFORMATION, INQUIRE AT CHECK ROOM NO. 1

WILLIAM A. MEADE, *Director of House Service*



High Standards of Performance

Wise artists place their specialized visual problems in the hands of the eye physician.

The very special visual requirements of your occupation may be studied and solved by your eye physician. For glasses that interpret his prescription exactly and handsomely, visit the Jenkel-Davidson Optical Co.

Jenkel - Davidson

OPTICAL COMPANY

366 POST STREET, ON UNION SQUARE
also OAKLAND · BERKELEY · BURLINGAME · PALO ALTO
SAN MATEO · SAN JOSE · SACRAMENTO · STOCKTON
LICENSED BY STATE BOARD OF MEDICAL EXAMINERS

SAN FRANCISCO OPERA COMPANY

SEASON 1950

CONDUCTORS

KURT HERBERT ADLER PAUL BREISACH FAUSTO CLEVA RICHARD KARP
KARL KRITZ GAETANO MEROLA JONEL PERLEA NICHOLAS RESCIGNO

MUSICAL STAFF

ANTONIO DELL'OREFICE, PETER PAUL FUCHS, RICHARD KARP, KARL KRITZ, CORRADO MUCCINI, NICHOLAS RESCIGNO, *Assistant Conductors*; KURT HERBERT ADLER, *Chorus Director and Musical Secretary*; WILLIAM CHRISTENSEN, *Choreographer and Ballet Master*; MADI BACON, *Director Boys Chorus*; NAOUM BLINDER, *Concert Master*; BORIS BLINDER, *Principal Cellist*; JULIUS HAUG, *Orchestra Manager*; ALMA HAUG, *Librarian*; DORA DI TANO, *Chorus and Ballet Accompanist*

STAGE DIRECTION

ARMANDO AGNINI, *Stage and Technical Director*; WILLIAM WYMETAL, *Stage Director*; ETIENNE BARONE, *Stage Manager*

ARTISTS

LICIA ALBANESE <i>Soprano</i>	HERTA GLAZ <i>Contralto</i>	PAULINE PAPPAS <i>Soprano</i>
CARMEN ANDREATTA <i>Soprano</i>	UTA GRAF <i>Soprano</i>	ARTHUR L. PETERS <i>Tenor</i>
SALVATORE BACCALONI <i>Bass</i>	COLIN HARVEY <i>Baritone</i>	LILY PONS <i>Soprano</i>
EILEEN BALDWIN <i>Soprano</i>	RALPH HERBERT <i>Baritone</i>	BETTIE SANDERSON <i>Soprano</i>
SARI BARABAS <i>Soprano</i>	LEONA HURD <i>Contralto</i>	BIDU SAYAO <i>Soprano</i>
JOSEPHINE BARBANO <i>Soprano</i>	DOROTHY KIRSTEN <i>Soprano</i>	JAMES SCHWABACHER <i>Tenor</i>
SIGURD BJOERLING <i>Baritone</i>	FREDERICK JAGEL <i>Tenor</i>	JOYCE STEPHENS <i>Soprano</i>
WILLIAM BOND <i>Tenor</i>	CHARLES KULLMAN <i>Tenor</i>	YI-KWEI SZE <i>Bass</i>
JOHN BROWNLEE <i>Baritone</i>	SHERRILL LANYON <i>Soprano</i>	ITALO TAJO <i>Bass</i>
CATHERINE BRUBAKER <i>Soprano</i>	BARBARA LAUPPE <i>Soprano</i>	RENATA TEBALDI <i>Soprano</i>
BIANCA BRUNI <i>Soprano</i>	BRENDA LEWIS <i>Soprano</i>	DESTAL THORNBURY <i>Contralto</i>
GEORGE CEHANOVSKY <i>Baritone</i>	DESIRE LIGETI <i>Bass</i>	DOROTHY THRONDSOEN <i>Contralto</i>
YVONNE CHAUVEAU <i>Soprano</i>	MAX LORENZINI <i>Baritone</i>	CLARAMAE TURNER <i>Contralto</i>
EUGENE CONLEY <i>Tenor</i>	ALLAN LOUW <i>Bass</i>	GIUSEPPE VALDENGO <i>Baritone</i>
CAESAR CURZI <i>Tenor</i>	PATRICK McVEY <i>Baritone</i>	FRANCESCO VALENTINO <i>Baritone</i>
MARIO DEL MONACO <i>Tenor</i>	ENZO MASCHERINI <i>Baritone</i>	RAMON VINAY <i>Tenor</i>
ALESSIO DE PAOLIS <i>Tenor</i>	GRETA NELSON <i>Contralto</i>	DONNA WALKER <i>Soprano</i>
GIUSEPPE DI STEFANO <i>Tenor</i>	ROBIN NELSON <i>Bass</i>	DOROTHY WARENSKJOLD <i>Soprano</i>
DEZSO ERNSTER <i>Bass</i>	ELENA NIKOLAIDI <i>Contralto</i>	ROBERT WEEDE <i>Baritone</i>
KIRSTEN FLAGSTAD <i>Soprano</i>	HUBERT NORVILLE <i>Tenor</i>	JOAN WELTON <i>Soprano</i>
JOHN FORD <i>Bass</i>	JO O'CONNELL <i>Soprano</i>	GERALDINE WILLIAMS <i>Soprano</i>
WALTER FREDERICKS <i>Tenor</i>	ALICE OSTROWSKY <i>Soprano</i>	

Baldwin

Distinguished Recognition



OFFICIAL CHOICE
OF THE
SAN FRANCISCO OPERA ASSOCIATION
FOR THE NINTH CONSECUTIVE YEAR

Baldwin

310 Sutter Street • San Francisco • SUTter 1-8500
19th and Webster Streets • Oakland • HIgate 4-1636

C H O R A L E N S E M B L E

CARMEN ANDREATTA
EILEEN BALDWIN
JOSEPHINE BARBANO
CATHERINE BRUBAKER
BIANCA BRUNI
JEAN BURLINGHAM
ROSE CARDINALE
HELEN F. CAREY
ELEANOR CORYELL
RUTH CRANE
VERA FORD

MISSES
LILLIAN GALE
HELEN GLOVER
IRENE HALICKI
ORTHELLA HUGHES
LEONA HURD
BEVERLY KEATON
SYBIL LOUISE KNAPP
VALERIA LAGORIO
SHERRILL LANYON
PEGGY LAWFORD
SERENA McKINNEY
MARY JEAN MARTIN

GRETA NELSON
PAULINE PAPPAS
BETTIE SANDERSON
WINIFRED H. SCHAMP
JANET STELLING
JOYCE STEPHENS
DESTAL THORNBURY
DOROTHY THRONDSOON
JEAN VAN ZILE
DONNA WALKER
JOAN WELTON

ANTHONY ALONZO
ANTHONY BALESTRANI
WILLIAM BOND
LOUIS BRAUNSTEIN
JOSEPH BROTHERTON
ROBERT GORDON BRUCE
RENATO BRUNI
NICHOLAS CRESCI
CAESAR CURZI
GALLIANO DANELUZ
FLOYD DAVIS
AMERIGO DEL GRANDE
PHILLIP DOAN
RUDOLPH DONATI

MESSRS.
JOSEPH GIAMMANCO
DAVID GIOSSO
PAUL GUENTER
COLIN HARVEY
EDSON B. HOEL
ALEXANDER JAKUTIS
GEORGE D. JENSON
BOYD LEWIS
FRANK LOHMEIER
MAX LORENZINI
ALLAN LOUW
EDWARD LOVASICH
PATRICK McVEY
MAX MEYERS

BRADFORD MORSE
RAYMOND MYERS
ROBIN NELSON
CHARLES PASCOE
ARTHUR L. PETERS
ATTILIO C. ROSSI
ALLEN SCHMIDLING
WILLIAM SIMPKINS
MILTON W. SMITH
ANDREW M. SNEDDON
AUSTIN THOMSON
DEMY TREVOR
HAROLD WHITE

BOYS CHORUS

THOMAS ALLEN
MICHAEL BARRY
BOBBY BEST
TERENCE BORGNA
JOHN BRANDES
RAYMOND CAUWERT
ELDEN DAVIS
CECIL DE LOACH
DONALD DOUB
PETER FARRELLY
RONALD FOX
PAUL GRAVES
WILLIAM GYORGY
EVERETT HINTZE

JEFFREY HOLM
JOHN KELLER
MICHAEL KERSNAR
SCOTT KERSNAR
PAT KIRK
HENRY KORNFIELD
DONALD LADIGIN
MICHAEL LAMB
DAVID LASSEGUES
MAYNARD LINN
DONALD LUXEMBERG
DONALD McCARTHY
JOSEPH McLAUGHLIN
PHILLIP METZGAR

RICHARD MIALILOVICH
RICHARD MIRATTI
CARL NEHM
ROBERT O'NEILL
RONALD RADETICH
RONALD SCHAEFER
DOUGLAS SMITH
CARY SMITH
PETER SMITH
ROBERT WARD
GRANT WISWELL
WILLIAM WITTMAN
MICHAEL ZELLER
WAYNE ZIMMERMAN

BALLET

Soloists: CELENA CUMMINGS, JOAN VICKERS, PETER NELSON, ROLAND VAZQUEZ

MISSES
SALLY BAILEY
ANN CROWELL
SUSAN DEVINCENZI
CAROLYN GEORGE
NANCY JOHNSON
PATRICIA JOHNSTON
MARY ALYCE KUBES
JUDITH NATHANSON
ROSALIE PROSCH
GENIE REYES
SHARON SHORE
GERALDINE VAZQUEZ
SYLVIA WILLIAMS
BETTY KOERBER

MESSRS:
RAY BALLALOBRE
ALTON BASUINO
RICHARD BURGESS
LEO DUGGAN
FRANK NELSON

AUXILIARY:
BENE ARNOLD
BONNY BELL
CONNIE COLER
NANCY DIMMLER
FIONA FUERTSNER
MARGARET LLOYDS
ROBERTA HAMILTON
ROBERTA MEYER
MARILYN deVITA
JUNE WILSON

PRODUCTION

EUGENE B. DUNKEL
Scenic Artist

EARL McGUIRE
Master Carpenter
JOHN T. HEAVEY
Master of Properties

A. L. MITCHELL
Master Electrician

FOR WAR MEMORIAL OPERA HOUSE

R. G. WAKEMAN
Master Carpenter

EDWARD J. ZETTEL
Master Electrician

WALLACE FLETTER
Master of Properties

COSTUMES MADE FOR SAN FRANCISCO OPERA ASSOCIATION BY STIVANELLO AND SONS, NEW YORK

ALEXANDER AGNINI
Wardrobe Master

INEZ DODSON HALL
Wardrobe Mistress
SUE MCGOWAN
Hairdresser

EVERETT MASON
Makeup Artist

PROGRAM

PISANI PRINTING & PUBLISHING COMPANY, PUBLISHERS, DESIGNERS AND PRINTERS

John Boles, Gertrude Niesen
Seen Dining with Paul Masson



Sharing a bottle of delightful Paul Masson California Champagne, **John Boles** and **Gertrude Niesen** celebrate the success of "Gentlemen Prefer Blondes," now at the Curran Theatre.

Paul Masson Vineyards, Saratoga, California
Fine Wines and Champagnes

R E P E R T O I R E

REGULAR SUBSCRIPTION

- AIDA (*Verdi*) *Tuesday Night*, September 26, at 8:00
 With Mmes. Tebaldi, Nikolaidi, Graf; Messrs. Del Monaco, Weede, Tajo, Ligeti, Norville
 CLEVA, *Conductor*
- THE MARRIAGE OF FIGARO (*Mozart*) *Friday Night*, September 29, at 8:00
 With Mmes. Sayao, Tebaldi, Glaz, Turner, Chauveau, Lanyon, Brubaker; Messrs. Tajo, Brownlee, Baccaloni, De Paolis, Cehanovsky, Norville
 PERLEA, *Conductor*
- TRISTAN UND ISOLDE (*Wagner*) *Tuesday Night*, October 3, at 7:45
 With Mmes. Flagstad, Glaz; Messrs. Vinay, Sigurd Bjoerling, Ernster, Cehanovsky, Norville, Ford, Schwabacher.
 PERLEA, *Conductor*
- ANDREA CHENIER (*Giordano*) *Friday Night*, October 6, at 8:00
 With Mmes. Albanese, Ostrowsky, Turner, Walker, Brubaker; Messrs. Del Monaco, Weede, De Paolis, Herbert, Norville, Ligeti, Sze, Ford, Cehanovsky, Lorenzini
 CLEVA, *Conductor*
- OTELLO (*Verdi*) *Tuesday Night*, October 10, at 8:00
 With Mmes. Tebaldi, Ostrowsky; Messrs. Vinay, Valdengo, Ligeti, De Paolis, Schwabacher, Cehanovsky, R. Nelson
 CLEVA, *Conductor*
- THE MAGIC FLUTE (*Mozart*) in English *Friday Night*, October 13, at 8:00
 With Mmes. Graf, Barabas, Turner, Chauveau, Williams, Lauppe, O'Connell, Sanderson, Baldwin; Messrs. Ernster, Kullman, Brownlee, Sze, Norville, Ligeti, Curzi, Schwabacher, Ford, Harvey, Bond, Louw
 BREISACH, *Conductor*
- BARBER OF SEVILLE (*Rossini*) *Tuesday Night*, October 17, at 8:00
 With Mmes. Pons, Turner; Messrs. Di Stefano, Mascherini, Baccaloni, Tajo, Cehanovsky, De Paolis, Harvey
 RESCIGNO, *Conductor*
- SALOME (*Richard Strauss*) *Friday Night*, October 20, at 8:00
 With Mmes. Lewis, Turner, Glaz, Baldwin; Messrs. Jagel, Sigurd Bjoerling, Fredericks, Sze, Norville, De Paolis, Schwabacher, Cehanovsky, Ligeti, Ford, Curzi, R. Nelson, Peters, Louw
 BREISACH, *Conductor*
 Preceded By
- SUOR ANGELICA (*Puccini*)
 With Albanese, Turner, Thornbury, Ostrowsky, Walker, Chauveau, Baldwin, Thronson, Hurd, Stephens, Lanyon, Pappas, Welton, G. Nelson, Barbano, Bruni, Andreaata
 ADLER, *Conductor*
- MANON LESCAUT (*Puccini*) *Tuesday Night*, October 24, at 8:00
 With Mmes. Kirsten, Glaz; Messrs. Del Monaco, Valdengo, Herbert, De Paolis, Curzi, McVey, Norville, Ford, Harvey
 CLEVA, *Conductor*
- PARSIFAL (*Wagner*) *Friday Afternoon*, October 27, at 5:00
 With Mmes. Flagstad, Graf, Glaz, Chauveau, Ostrowsky, Walker, O'Connell, Stephens; Messrs. Kullman, Sigurd Bjoerling, Ernster, Herbert, Ligeti, Ford, Norville, Schwabacher, Curzi
 PERLEA, *Conductor*
- The opera will begin at 5:00 p.m. with a dinner intermission at about 6:45. The performance will resume at 8:30.

SUNDAY MATINEE SUBSCRIPTION

- AIDA (*Verdi*) *Sunday Afternoon*, October 1, at 2:00
 With Mmes. Tebaldi, Nikolaidi, Graf; Messrs. Del Monaco, Weede, Tajo, Sze, Norville
 ADLER, *Conductor*
- LA BOHEME (*Puccini*) *Sunday Afternoon*, October 8, at 2:00
 With Mmes. Sayao, Graf; Messrs. De Stefano, Mascherini, Cehanovsky, Tajo, Baccaloni, Harvey, Lorenzini, Curzi, Kersnar
 KRITZ, *Conductor*
- ANDREA CHENIER (*Giordano*) *Sunday Afternoon*, October 15, at 2:00
 With Mmes. Albanese, Ostrowsky, Turner, Walker, Brubaker; Messrs. Del Monaco, Weede, De Paolis, Herbert, Norville, Ligeti, Sze, Ford, Cehanovsky, Lorenzini
 CLEVA, *Conductor*
- BARBER OF SEVILLE (*Rossini*) *Sunday Afternoon*, October 22, at 2:00
 With Mmes. Pons, Turner; Messrs. Conley, Mascherini, Baccaloni, Tajo, Cehanovsky, De Paolis, Harvey
 RESCIGNO, *Conductor*
- PARSIFAL (*Wagner*) *Sunday Afternoon*, October 29, at 1:00
 With Mmes. Flagstad, Graf, Glaz, Chauveau, Ostrowsky, Walker, O'Connell, Stephens; Messrs. Kullman, Sigurd Bjoerling, Ernster, Herbert, Ligeti, Ford, Norville, Schwabacher, Curzi
 PERLEA, *Conductor*

MIDWEEK EVENING SUBSCRIPTION

- LUCIA DI LAMMERMOOR (*Donizetti*) *Thursday Night*, September 28, at 8:00
 With Mmes. Pons, Chauveau; Messrs. Di Stefano, Mascherini, Ligeti, Norville, Curzi
 BREISACH, *Conductor*
- THE MARRIAGE OF FIGARO (*Mozart*) *Wednesday Night*, October 4, at 8:00
 With Mmes. Sayao, Tebaldi, Warenskjold, Turner, Chauveau, Sanderson, Baldwin; Messrs. Tajo, Brownlee, Baccaloni, De Paolis, Cehanovsky, Norville
 PERLEA, *Conductor*
- TRISTAN UND ISOLDE (*Wagner*) *Thursday Night*, October 12, at 7:45
 With Mmes. Flagstad, Glaz; Messrs. Vinay, Sigurd Bjoerling, Ligeti, Cehanovsky, Norville, Ford, Schwabacher
 PERLEA, *Conductor*
- OTELLO (*Verdi*) *Thursday Night*, October 19, at 8:00
 With Mmes. Tebaldi, Ostrowsky; Messrs. Vinay, Valdengo, Ligeti, De Paolis, Schwabacher, Cehanovsky, R. Nelson
 CLEVA, *Conductor*

bask in operatic bliss all year

with

CETRA-SORIA long-playing records from Sherman, Clay!

Stretch opera season through
the year... select your repertoire
at Sherman, Clay from the
most complete collection of
operas on LP... Cetra-Soria!



come... write... or phone to
Sherman, Clay for Cetra-Soria's complete
LP listings of more operas, opera
recitals by Stignani, Tassinari, Italo
Tajo, and the brilliant Tagliavini-
Tassinari duets.
sutter 1-6000



- Just released...Elektra** Richard Strauss. First complete recording, in German, with Anny Konetzni, Daniza Iltisch, Mitropoulos conducting. 2-12" LP's, 1209 **11.90**
- La Cenerentola** Rossini. In Italian, with Rovero, Meletti. 2-12" LP's, 1208 **11.90**
- Lucia di Lammermoor** Donizetti. With Pagliughi. 3-12" LP's, 1205 **17.85**
- Norma** Bellini. With Cigna, Stignani. 3-12" LP's, 1204 **17.85**
- La Forza del Destino** Verdi. With Caniglia, Stignani, Masini. 2-12" LP's, 1201 **11.90**
- Falstaff** Verdi. With Pagliughi, Taddei. 3-12" LP's, 1207 **17.85**
- Turandot** Puccini. With Cigna, Merli. 3-12" LP's, 1206 **17.85**
- Gianni Schicchi** with Taddei. 1-12" LP 50028 **5.95**
- Il Tabarro** with Petrella, Reali. 1-12" LP, 50029 **5.95**
- Suor Angelica**, available by Christmas 1-12" LP **5.95**

Sherman Clay

Record Department, SHERMAN, CLAY
Sutter at Kearny, San Francisco 6, Calif.

Please send me CETRA-SORIA LP listings (no charge) —
CETRA-SORIA records checked above. Total \$ _____
add 3½% sales tax in San Francisco, 3% elsewhere in Calif.
CHARGE _____ CHECK _____ M. O. _____ C. O. D. _____

NAME _____
STREET _____
CITY _____ ZONE _____ STATE _____

FRIDAY NIGHT, SEPTEMBER 29, at 8:00

† MARRIAGE OF FIGARO

Opera in four acts. Music by Wolfgang Amadeus Mozart
Text by Lorenzo da Ponte. Founded on the trilogy by Beaumarchais.

THE CAST

Figaro, the Barber, valet of the count.....ITALO TAJO
Count Almaviva, a Spanish noble.....JOHN BROWNLEE
Countess Almaviva, his wife.....FLORENCE QUARTARARO
Susanna, maid of the Countess.....BIDU SAYAO
Cherubino, page to the Countess.....HERTA GLAZ
Marcellina, servant to Bartolo.....CLARAMAE TURNER
Barbarina, Basilio's cousin.....YVONNE CHAUVEAU
Doctor Bartolo, rejected lover of Susanna.....SALVATORE BACCALONI
Antonio, a gardener.....GEORGE CEHANOVSKY
Don Basilio, a busy-body.....ALESSIO DE PAOLIS
Don Curzio, a Judge.....HUBERT NORVILLE
Peasant girls.....*SHERRIL LANYON, *CATHERINE BRUBAKER

**San Francisco Opera debut*

*Peasants, Officers of the Court, Valets, Bravos
Corps de Ballet*



STAGE DIRECTOR

WILLIAM WYMETAL

CONDUCTOR

*JONEL PERLEA

CHORUS DIRECTOR

KURT HERBERT ADLER

ARMANDO AGNINI, Technical Director



TIME AND PLACE: Seventeenth Century; near Seville

(The action is a direct continuation of "The Barber of Seville")

Act I: Unused Room in the Chateau of Count Almaviva

Act II: Apartment of the Countess

Act III: Throne Room in the Chateau

Act IV: Garden of the Chateau

† Midweek Evening Performance of "Marriage of Figaro," October 4

TICKETS FOR REMAINING PERFORMANCES AT
OPERA-SYMPHONY BOX OFFICE, SHERMAN, CLAY

Encores not permitted—Bell rings three minutes before curtain rises

The Story of "The Marriage of Figaro"

ACT I

Figaro, in preparation for his approaching marriage to Susanna, makes ready the room assigned them by Count Almaviva. But his gay spirits are dampened when Susanna tells him the Count is casting desirous eyes upon her. Marcellina, with whom Figaro had previously entered into a marriage contract, enters with Dr. Bartolo and demands that he live up to the agreement. Susanna overhears. They depart as Cherubino, deeply in love with Countess Almaviva, enters and tells of his infatuation. He hides when a knock announces the Count who relates his suspicions of Cherubino. He, too, is interrupted by a knock and also hides. It is Basilio. Cherubino is exiled to the army.

ACT II

Susanna has confessed to the Countess the unwelcome attentions of the Count. Figaro enters and they plot to make the Count jealous by telling him the Countess is to meet a lover in the garden that evening. The plan is to send Marcellina to impersonate the Countess, and Cherubino, in feminine attire, to meet the Count in place of Susanna. Cherubino is dressed to represent Susanna and hidden in a closet as the Count enters. Hearing a noise, the Count demands the closet door open. On their refusal he goes for an implement to force entry. Cherubino slips out and Susanna takes his place. The Count returns, opens the door, discovers Susanna and apologizes. Marcellina, entering, demands that the Count compel Figaro to marry her.

ACT III

The Count threatens Susanna that he will force Figaro to marry Marcellina unless she accepts his attentions. Susanna pretends to encourage him and agrees to meet him that evening. Both believe their ends gained and separate as Figaro enters. Susanna exults to Figaro that their marriage is victorious as they depart. The Count overhears. Figaro returns with Marcellina, a lawyer and Dr. Bartolo. They demand that he marry Marcellina or pay heavy damages. But it develops, through a birth-mark on his arm, that Figaro is really Marcellina's long-lost son. Mother and son embrace as Susanna enters. The embrace is satisfactorily explained. Susanna tells the Countess of the impending success of their scheme. The Countess dictates a letter making a tryst with the Count. (Scene 2): The marriage is performed. Susanna contrives to slip a note to the Count. Cherubino is discovered in his girl's attire and sentenced to marry Barbarina.

ACT IV

Figaro conceals himself when Susanna, in the guise of the Countess, and the Countess, disguised as Susanna, enter. The Countess also hides. Susanna awaiting the coming of the Count, sings an impassioned love song to fire the jealousy of the hidden Figaro. Cherubino, entering, sees Susanna, thinks she is the Countess and tries to kiss her. The Count comes upon the scene and makes ardent love to the supposed Susanna. The real Susanna reveals herself to Figaro who embraces her. The Count, demands explanations and all ends in happiness.



"Continuous performances"

are a delightful, actuality when you possess a library of great orchestral, vocal and instrumental music, magnificently interpreted by the finest artists on Columbia Masterworks Records.

LILY PONS

Five Famous Coloratura Arias — with orchestra conducted by Pietro Cimara. Includes the "Bell Song," "Mad Scene" and "Cavatina" from Lucia, and others.

Columbia 12" Long Playing Record ML-4057

BIDU SAYAO

La Boheme (Puccini) (Complete) Sayao, Tucker, Baccaloni and other great artists. Giuseppe Antonicelli conducting the Chorus and Orch. of the Metropolitan Opera Assn.

Columbia Long Playing Set SL-101

ELENA NIKOLAIDI

"O Don Fatale" — Don Carlos — (Verdi) **Sleep Walking Scene** — Macbeth — (Verdi) with Fausto Cleva conducting the Columbia Symphony Orch.

Columbia 7" Long Playing Record 3-384

CLARAMAE TURNER

Hansel and Gretel (Humperdinck) (Complete). Turner, Stevens, Conner, Votipka, Brownlee with Max Rudolf conducting the Chorus and Orch. of the Metropolitan Opera Assn.

Columbia Long Playing Set SL-102

HERTA GLAZ

Tristan Und Isolde — Love Duet (Act II, Scene 2) (Wagner). Glaz, Traubel, Ralf with Fritz Busch conducting the Metropolitan Opera Orch.

Columbia 12" Long Playing Record ML-4055

CHARLES KULLMAN


The Good Old Songs

Charles Kullman with Male Quartet. Columbia 10" Long Playing Record ML-2090

ROBERT WEEDE

Carmen — Excerpts (Bizet). Weede, Stevens, Conner, Jobin with the Metropolitan Opera Chorus and Orch., conducted by George Sebastian. Columbia 12" Long Playing Record ML-4013

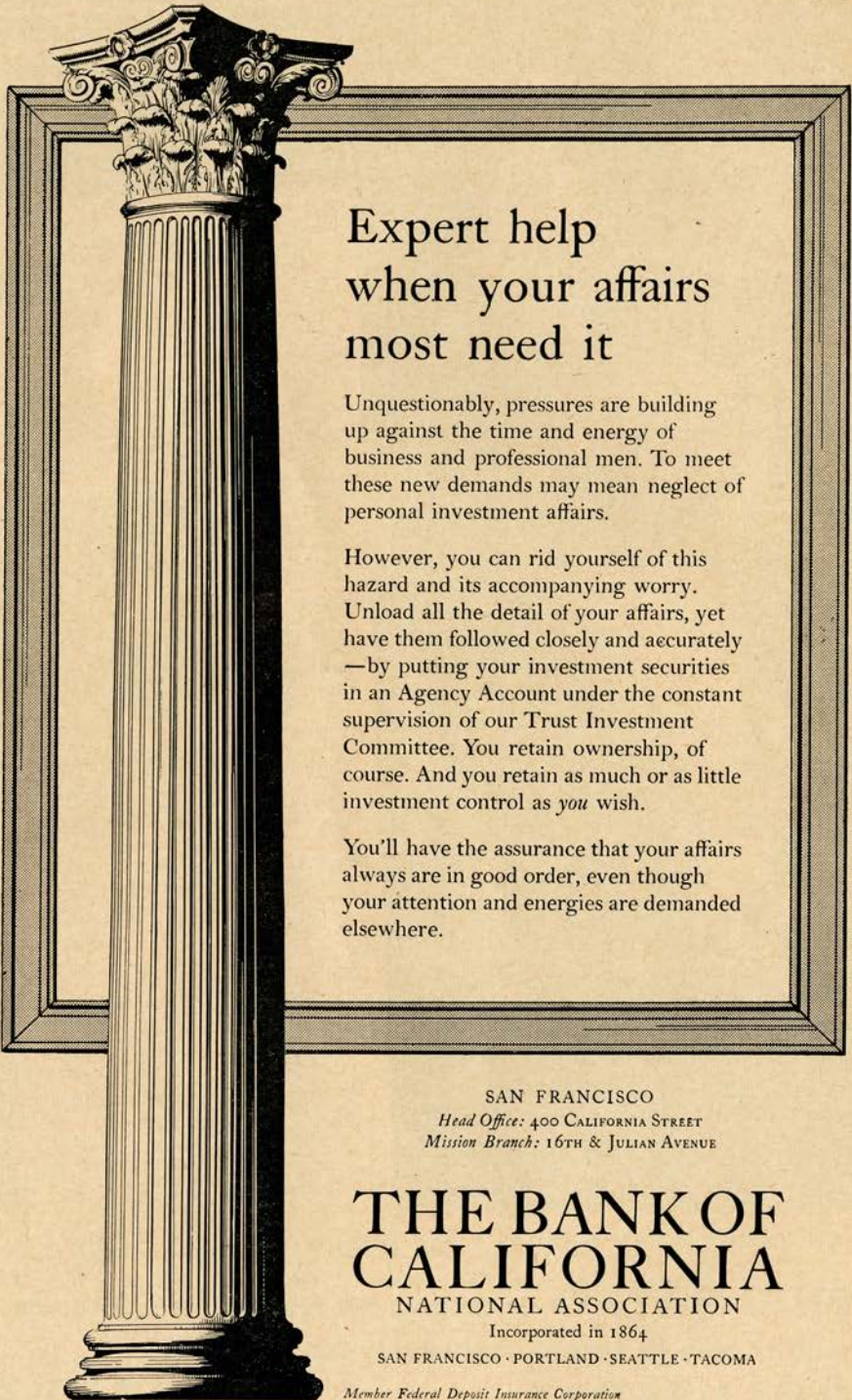
Madame Butterfly (Puccini) (Complete). Tucker, Steber, Valdeno, Madeira, De Paolis, Cehanovsky, Luise, Votipka, Baker with Max Rudolf conducting the Chorus and Orch. of the Metropolitan Opera Assoc. Columbia Long Playing Set SL-104

Trade-marks "Columbia," "Masterworks" and  Reg. U. S. Pat. Off.



BIDÚ SAYÃO is among the scores of great artists who choose to record exclusively for

COLUMBIA *Masterworks* **RECORDS**



Expert help when your affairs most need it

Unquestionably, pressures are building up against the time and energy of business and professional men. To meet these new demands may mean neglect of personal investment affairs.

However, you can rid yourself of this hazard and its accompanying worry. Unload all the detail of your affairs, yet have them followed closely and accurately —by putting your investment securities in an Agency Account under the constant supervision of our Trust Investment Committee. You retain ownership, of course. And you retain as much or as little investment control as *you* wish.

You'll have the assurance that your affairs always are in good order, even though your attention and energies are demanded elsewhere.

SAN FRANCISCO

Head Office: 400 CALIFORNIA STREET

Mission Branch: 16TH & JULIAN AVENUE

THE BANK OF CALIFORNIA

NATIONAL ASSOCIATION

Incorporated in 1864

SAN FRANCISCO · PORTLAND · SEATTLE · TACOMA

Member Federal Deposit Insurance Corporation

SUNDAY MATINEE, OCTOBER 1, at 2:00

AIDA

Opera in four acts. Music by Giuseppe Verdi.

Text by Antonio Ghislanzoni.

THE CAST

Aida, an Ethiopian slave.....	RENATA TEBALDI
Amneris, daughter of the Egyptian King.....	ELENA NIKOLAIDI
Rhadames, captain of the Egyptian guard.....	MARIO DEL MONACO
Amonasro, King of Ethiopia, Aida's father.....	ROBERT WEEDE
Ramfis, High Priest of Isis.....	ITALO TAJO
The King of Egypt.....	*YI-KWEI SZE
Messenger.....	CAESAR CURZI
Priestess.....	UTA GRAF

**American Opera debut*

*Priests, Priestesses, Ministers, Captains, Soldiers, Officials, Ethiopian Slaves
and Prisoners, Egyptians, etc.*

Solo Dancer: Celena Cummings
Incidental Dances by Corps de Ballet
Choreography by Willam Christensen



STAGE DIRECTOR
ARMANDO AGNINI

CONDUCTOR
FAUSTO CLEVA

CHORUS DIRECTOR
KURT HERBERT ADLER



TIME AND PLACE: In Pharaoh's Time; Memphis and Thebes

Act I: Scene 1: Hall in King's Palace at Memphis
Scene 2: Temple of Isis

Act II: Scene 1: A Hall in Amneris' Apartment
Scene 2: The Gate of Thebes

Act III: Shores of Nile near Temple of Isis

Act IV: Scene 1: Outside the Judgment Hall
Scene 2: Above—In Temple of Vulcan
Below—Vault beneath the Temple

TICKETS FOR REMAINING PERFORMANCES AT
OPERA-SYMPHONY BOX OFFICE, SHERMAN, CLAY

Encores not permitted — Bell rings three minutes before curtain rises

The Story of "Aida"

ACT I

A messenger has come to the palace of the Egyptian king with word of approaching invasion by the Ethiopians under the leadership of King Amonasro. Ramfis, the high priest, reveals to Rhadames that the Gods have selected him to command the forces sent forth to repel the invasion. This choice pleases Princess Amneris for victory would make Rhadames, with whom she is in love, a desirable mate for her. The warrior's thoughts are not of Amneris, however, but of Aida, Ethiopian slave of the princess, captured in a late war, and, unknown to the Egyptians, a daughter of Amonasro. Amneris, coming upon Rhadames, rallies him on the passion of his bearing but jealously comprehends it is not for her when the weeping slave girl enters. The court assembles and escorts Rhadames to the temple to receive his command. (Scene 2). In the recesses of the temple of Vulcan, Rhadames receives a consecrated sword and is dedicated to his trust.

ACT II

Word has come that Rhadames has been victorious. Amneris thinks upon his strange behavior with Aida as she joins her slave girls in singing his praises. On the approach of Aida she deftly gains from her the confession of her love for Rhadames. Then, telling of her own love for the warrior, Amneris commands that Aida shall witness Rhadames obedience to herself on his triumphant return. (Scene 2). Royal welcome is given Rhadames on his return with the conquered Ethiopians. Amonasro, dressed as a plain officer, is recognized by Aida. Signaling her not to betray his rank he acknowledges her as his daughter and tells how the king, wounded, had died at his feet. Rhadames, offered any boon he may wish, requests the freedom of the Ethiopians. His wish is granted but Amonasro and Aida are retained as hostages. The king then gives Rhadames, as his supreme reward, the hand of Amneris.

ACT III

Amneris goes to the temple on the eve of her marriage to Rhadames. Aida, coming later, is followed by her father who plays upon her love for Rhadames and her concern for her countrymen to involve him in a plot to his advantage. Rhadames appearing, Amonasro conceals himself. Aida begs her lover to flee with her. Enraptured, he unwittingly discloses his army's movements, upon which Amonasro comes forth. Amneris, concealed among the palms, has overheard and, enraged, rushes out. Amonasro escapes with Aida.

ACT IV

Amneris, regretting the act that gave the man she loved to the priests, sends for Rhadames and offers to save him if he accept and return her love. Rhadames refuses and she calls down the hatred of the Gods upon him. The priests escort Rhadames to the Hall of Justice. Amneris hears the trial as it is conducted behind the scenes and wildly curses the priesthood as sentence is pronounced. (Scene 2). Aida, informed of Rhadames' sentence, has concealed herself in the tomb. When he descends into it and prays that she may never know his fate, Aida comes forth that they may die together.

Fine Wine for Autumn Dining



Make Autumn meals
more tantalizing
with light,
delicate Tipo Wine.
Serve Tipo—Red or White—to
bring out the hidden flavors in
favorite foods... to perk up
lagging appetites... to turn
ordinary fare into gracious dining.
Insist on Tipo by Italian Swiss,
and enjoy the delightful
taste difference!

Italian Swiss Colony · Asti, Calif.



Italian Swiss Colony **TIPO WINE**
red & white

Announcement

A Choice Selection of Superb Wines
For Discriminating People
Is Now Available in Limited Quantities
Under the **Asti** Brand Label

Their exceptional quality is the result of skill
gained by over half a century of wine making by

Italian Swiss Colony, Asti, Sonoma County, California
Vineyards Since 1887

Asti Brand table
and dessert wines

Available in
quality wine stores

It might be a costly compliment

... to name a friend or relative executor of your Will. It might be costly to him in time. Costly to your heirs in money (through his inexperience).

Why not name a trust company as your executor? It costs no more and you get professional service.

We offer our services to estates large or small.

TRUST DEPARTMENT

Wells Fargo Bank & UNION TRUST CO.

SAN FRANCISCO

Market at Montgomery

Market at Grant Ave.

Established 1852

Orchids for the Opera

Traditionally, generations of San Franciscans have associated the Opera Season with fine flowers from America's Most Famous Florists . . .

Podesta Baldocchi

224 GRANT AVENUE, SUTTER 1-6200
FAIRMONT HOTEL • PALACE HOTEL

Here
SAVINGS
EARN **2½%**
Current Rate

NOW INSURED UP TO
\$10,000 FOR EACH ACCOUNT

SAFE FOR SAVINGS SINCE 1885



OUR 65TH YEAR

160 SUTTER

NEAR KEARNY

SAN FRANCISCO

MILO R. ROBBINS • PRESIDENT

REPERTOIRE—Continued

SALOME (*Richard Strauss*) *Thursday Night, October 26, at 8:00*
 With Mmes. Lewis, Turner, Glaz, Baldwin; Messrs. Jagel, Herbert, Fredericks, Sze, Norville,
 De Paolis, Schwabacher, Cehanovsky, Ligeti, Ford, Curzi, R. Nelson, Peters, Louw
 BREISACH, *Conductor*
 Preceded By

SUOR ANGELICA (*Puccini*)
 With Mmes. Albanese, Turner, Thornbury, Ostrowsky, Walker, Chauveau, Baldwin, Thronson,
 Hurd, Stephens, Lanyon, Pappas, Welton, G. Nelson, Barbano, Bruni, Andreatta
 ADLER, *Conductor*

CALIFORNIA MASONIC CENTENNIAL PERFORMANCE

THE MAGIC FLUTE (*Mozart*) *Wednesday Night, October 11, at 8:00*
 With Mmes. Graf, Barabas, Turner, Williams, Lauppe, Chauveau, O'Connor, Sanderson, Baldwin;
 Messrs. Ernster, Kullman, Brownlee, Sze, Norville, Ligeti, Curzi, Schwabacher, Ford,
 Harvey, Bond, Louw
 BREISACH, *Conductor*

CONCERT DIVISION PERFORMANCE

LUCIA DI LAMMERMOOR (*Donizetti*) *Monday Night, October 2, at 8:00*
 With Mmes. Pons, Chauveau; Messrs. Conley, Valentino, Ligeti, Norville, Curzi
 BREISACH, *Conductor*

EXTRA PERFORMANCE

LA BOHEME (*Puccini*) *Saturday Night, October 28, at 8:00*
 With Mmes. Albanese, Graf; Messrs. Di Stefano, Valentino, Cehanovsky, Tajo, Baccaloni,
 Harvey, Lorenzini, Curzi, Kersnar
 MEROLA, *Conductor*

MATINEES FOR YOUNG PEOPLE

Presented by the San Francisco Opera Guild
MADAMA BUTTERFLY (*Puccini*) *Thursday Matinee, October 19 and 26, at 1:00*
 With Mmes. Kirsten, Glaz, Chauveau; Messrs. Conley, Valentino, De Paolis, Sze, Cehanovsky,
 Ford, Harvey
 RESCIGNO, *Conductor*

STEWART — SALVATORE BRADY D'AURA

ANNOUNCE THE OPENING OF THEIR VOCAL STUDIO

OPERA -- CONCERT -- LANGUAGES

5728 CALIFORNIA STREET

SKYLINE 2-0556



high atop historic nob hill

SAN FRANCISCO'S
HOTEL

Mark Hopkins

GEO. D. SMITH, GENERAL MANAGER

Peacock Court

Table d'hote and a la carte
 dinner service nightly except
 Monday 7 to 9 p.m. . . . no
 couvert or tax...dinner music.

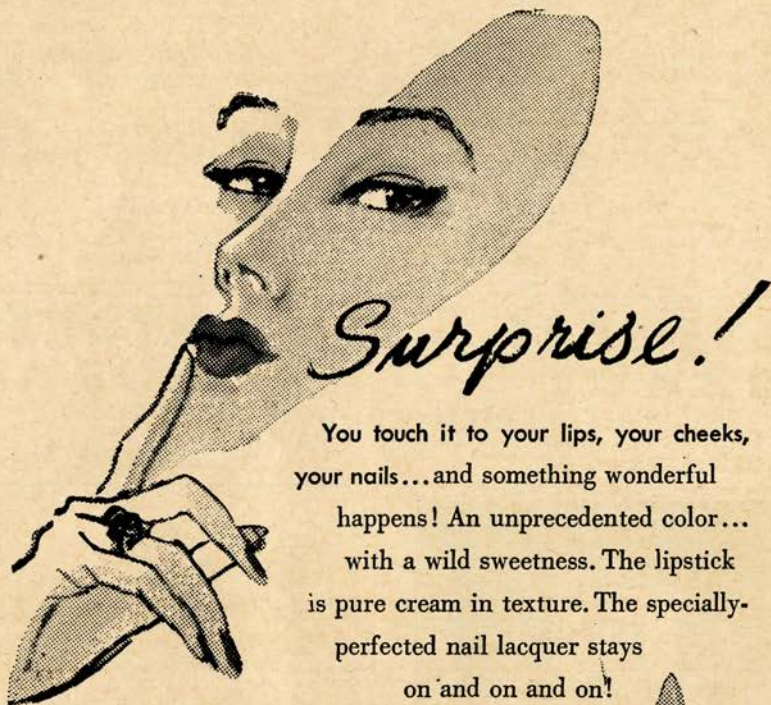
Now appearing, DOROTHY
 SHAY, the Park Avenue hill-
 billie, with the music of Griff
 Williams and his orchestra...
 performances 9:30 p.m. and
 12:00 p.m.

Midnight Opera Supper

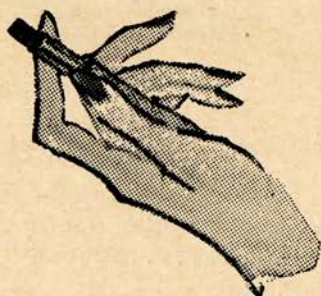
...a light, prix fixe supper
 served nightly after opera
 performances . . . reduced
 couvert.

Elizabeth Arden's

bewitching new color



You touch it to your lips, your cheeks,
your nails...and something wonderful
happens! An unprecedented color...
with a wild sweetness. The lipstick
is pure cream in texture. The specially-
perfected nail lacquer stays
on and on and on!



Lipstick, 1.00, 1.50
Ceil d'Or (new long lipstick) 2.00
Automatic Lipstick, 2.50
Nail Lacquer, 1.00
Cheek Rouge, 1.50

prices plus tax

OPERA BOX HOLDERS

Season 1950

- | | | | |
|---|------------------------------------------------------------------------------------------------------------------------------------|---|--------------------------------------------------------------------------------------------------------------------------------|
| A | MR. AND MRS. GAETANO MEROLA | O | MRS. HENRY POTTER RUSSELL
MR. AND MRS. W. W. CROCKER |
| B | MR. AND MRS. KARL C. WEBER
MRS. CRESCENT PORTER HALE | P | MRS. GEORGE EDWIN BENNETT
MR. AND MRS. PARKER S. MADDUX
MR. AND MRS. T. S. PETERSEN |
| C | MRS. SIGMUND STERN | Q | MR. AND MRS. SIDNEY M. EHRMAN |
| D | MRS. FRANK P. DEERING
MR. AND MRS. OSCAR SUTRO, JR.
MR. AND MRS. R. GWIN FOLLIS | R | MR. AND MRS. ARTHUR DALE KING |
| E | MR. AND MRS. JAMES BODRERO
MR. AND MRS. E. GEOFFREY MONTGOMERY
MR. AND MRS. EDMUNDS LYMAN
COLONEL AND MRS. ROBERT A. ROOS | S | MRS. MARCUS S. KOSHLAND
JUDGE AND MRS. M. C. SLOSS |
| F | MR. AND MRS. DONALD MACLEOD LEWIS | T | MR. AND MRS. CLARENCE LORAN JOHNSTON
MRS. WILLIAM CAVALIER |
| G | MRS. SAMUEL KNIGHT
MR. AND MRS. CHARLES B. HENDERSON
MR. AND MRS. FRANK G. BELCHER
MRS. SELBY MCCREERY | U | MR. AND MRS. CHARLES L. HARNEY |
| H | MR. AND MRS. C. O. G. MILLER
MR. AND MRS. F. W. MCNEAR | V | MRS. PRENTIS COBB HALE |
| J | MRS. I. W. HELLMAN | W | MRS. EPPS J. MILLER
MRS. EDWARD M. ROLKIN |
| K | MR. AND MRS. GEORGE T. CAMERON
MR. AND MRS. KENNETH MONTEAGLE | X | MR. AND MRS. J. E. FRENCH |
| L | MR. AND MRS. JOSEPH T. GRACE | Y | MR. AND MRS. PRENTIS COBB HALE, JR.
MR. AND MRS. RICHARD C. HAM |
| M | MR. AND MRS. MORTIMER FLEISHHACKER | Z | MR. AND MRS. JOHN BARNARD BAILEY
MR. AND MRS. JOHN B. CELLA
MR. AND MRS. LOUIS A. PETRI
MR. AND MRS. BURTON B. TURNER |
| N | MR. AND MRS. CHARLES R. BLYTH
MRS. RICHARD S. MCCREERY | | |



Alouette

Always Something Delicious

COMPLETE DINNER

Plat du jour \$2.20

Sirloin Steak Marchand de Vin \$3.25

RESTAURANT FRANCAIS PAR EXCELLENCE

1121-23 POLK ST. (Open Daily at 4:30 p.m. except Mondays) GR. 4-2166

AUTUMN IMPORTATIONS of Shirtings and Tie Silks

Shirts \$10.50 to \$45.00

Neckwear \$2.50 to \$6.50

D. C. HEGER

IMPORTERS & SHIRTMAKERS

170 SUTTER STREET

SAN FRANCISCO

BEFORE THE OPERA—

SKIPPER KENT'S

CHARCOAL BROILED STEAKS AND FOWL

ORIENTAL CUISINE IN A TROPICAL SETTING

EXOTIC RUM DRINKS

1040 COLUMBUS AVENUE at TAYLOR

PRospect 6-3738

PRospect 6-3737

WHEN IN OAKLAND, SKIPPER KENT'S "ZOMBIE VILLAGE"
6485 SAN PABLO AVENUE

OLympic 2-9113



Philco Model 1634
16-inch console

*the world's most
wonderful home
entertainment . . .*

PHILCO

Television

*can be yours
to enjoy . . . NOW!*

SCHWABACHER-FREY

MARKET OPPOSITE GRANT AVENUE

Since 1896



**The
Golden Pheasant**

POWELL AT GEARY

San Francisco's Most Favorably Known Restaurant

At Your Service Our Annex: Techau Tavern

Rickey's

LUNCHEON • DINNER • AFTER THEATER

TOWN HOUSE
san francisco

STUDIO CLUB
palo alto

HOW TO PRONOUNCE THEIR NAMES

LICIA ALBANESE

Lee'-chee-ah Ahl-bah-nay'zay

ARMANDO AGNINI

Ar-mahn'-dow Ah-nee'-nee

SALVATORE BACCALONI

Sahl-yah-tow'-ray Bach-ah-low'-nee

SARI BARABAS

Sha-ree' Bar'-ah-bash

ETIENNE BARONE

Et-yehn Bah-row'-nay

SIGURD BJOERLING

Sigurd Bee-yurl'-ing

GEORGE CEHANOVSKY

George Chay-han-off'-skee

FAUSTO CLEVA

Faus-tow Clay-vah

ANTONIO DELL'OREFICE

Antonio Dell-or-reff'-ee-chay

MARIO DEL MONACO

Mah'-ree-o Dell-mahn'-ah-ko

ALESSIO DE PAOLIS

Ah-less'-see-oh Deh-Pah'-oh-leece

GIUSEPPE DI STEFANO

Jus-zep'-eh Dee-stef'-ah-no

HERTA GLAZ

Hair-tah Glahz

UTA GRAF

You-tah Grafh

FREDERICK JAGEL

Frederick Yay-gel

DESIRE LIGETI

Dah-zee-ray' Lig'-eti

ENZO MASCHERINI

Enzo Mah-skay-ree'-nee

GAETANO MEROLA

Gah-yay-tahn'-oh Mare'oh-lah

CORRADO MUCCINI

Kor-rah'-do Mu-chee'-nee

ELENA NIKOLAIDI

Ah-lean'-ah Nick-o-lie'-dee

JONEL PERLEA

Joe-nel' Per'-lee-ah

NICOLA RESCIGNO

Nee'-ko-lah Ray-sheen'-yo

YI-KWEI SZE

Yee-Kway Zee

RENATA TEBALDI

Ray-nah'-ta Tee-bahl dee

GIUSEPPE VALDENGIO

Jus-zeh'-peh Vahl-den-go

ITALO TAJO

Ee-tahl'-o Tah-yo

FRANCESCO VALENTINO

Francesco Vah-lenn-teen'-oh

RAMON VINAY

Ramon Vee-nigh

DOROTHY WARENSKJOLD

Dorothy Waren-showld

MONROE-
ANDREW

DISTINCTIVE
MEN'S WEAR


CUSTOM TAILORS

386 Post Street

BELFAST

Sparkling WATER

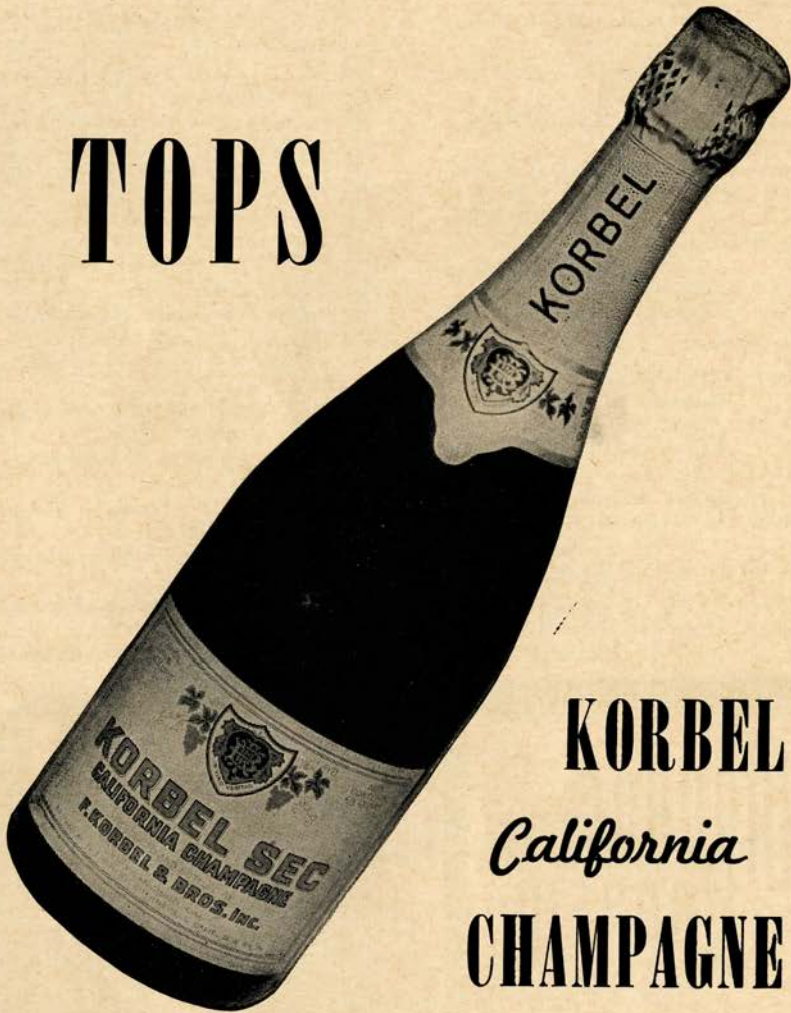
MADE IN U.S.A.



FAMOUS
SINCE
1877

keeps drinks livelier longer!

TOPS



KORBEL *California* CHAMPAGNE

PRODUCED AND BOTTLED AT OUR WINERY

F. KORBEL & BROS., INC.
Guerneville, California

"21" BRANDS, INC.
NEW YORK, N.Y.

DISTRIBUTORS:

TRADER DISTRIBUTING CO.
SAN FRANCISCO

GUARANTOR MEMBERS

of the

SAN FRANCISCO OPERA ASSOCIATION

1950

Mrs. Elizabeth Abbott
 Mr. and Mrs. C. Edgar Adams II
 Mr. and Mrs. C. Robert Adams
 N. Harris Aedes
 Bertram E. Alanson
 Mrs. Agnes Aldrich
 Mrs. Annette Seymour
 Alexander
 Mrs. Wallace M. Alexander
 Dr. and Mrs. R. Emmet Allen
 Lucy H. Allyne
 Mr. and Mrs. T. E. Ambrose
 Mr. and Mrs. E. W. Arnold
 Mr. and Mrs. Edward R. Bacon
 Mr. and Mrs. John B. Bailey
 Elsa M. Baker
 Mr. and Mrs. William Paul Baker
 A. R. Baldwin
 Mr. and Mrs. B. A. Banker
 Mr. and Mrs. Harry L. Barbash
 Dr. Otto Barkan
 Mrs. John Thomas Barnett
 Peter Barnett
 J. F. Barrett
 Mrs. E. F. Barron
 Evelyn H. Barron
 Irving Bartel
 Mrs. Irvin V. Barth
 Mr. and Mrs. Dominic A.
 Bazzanella
 Mr. and Mrs. Robert S. Beall
 Mr. and Mrs. Stephen D.
 Bechtel
 Dorothy E. Beck
 Dr. and Mrs. Walter Beckh
 Mr. and Mrs. Frank G. Belcher
 Mr. and Mrs. F. N. Belgrano, Jr.
 Dr. and Mrs. Dudley Bell
 Richard C. D. Bell
 Mrs. Konstantine Belotelkin
 Mr. and Mrs. David Benioff
 Mr. and Mrs. Dudley G. Bennett
 Mrs. George E. Bennett
 Mrs. Walter H. Bentley
 Avram Bercovich
 Mr. and Mrs. Peter Bercut
 Albert Bernard
 Dr. and Mrs. Elbridge J. Best
 Dr. and Mrs. Tholow Binkley
 Mr. and Mrs. Newton Bissinger
 Mr. and Mrs. Norman K.
 Blanchard
 W. Harry Blatchly
 Mrs. Naoum Blinder
 Louis Bloch
 Edward J. Bloom
 Dr. and Mrs. Arthur L.
 Bloomfield
 Mr. and Mrs. Jean Blum
 Mr. and Mrs. Charles R. Blyth
 Mrs. Walter W. Boardman
 Leon Bocqueraz
 Mr. and Mrs. James Bodrero
 Mrs. Robert C. Bolton
 D. Gould Bowley
 Mr. and Mrs. George H.
 Bowman
 Louise A. Boyd
 Mr. and Mrs. W. C. Brauns
 G. Temple Bridgman
 Mrs. Wm. Ellery Briggs
 Roy A. Bronson
 Mrs. John F. Brooke
 Mrs. Julia Fox Brooke
 George W. Brooks
 Louis L. Brounstein
 Arthur M. Brown, Jr.
 James A. Brown
 Mrs. Louis C. Brown
 Ralph Brown
 Walter D. Brown
 Mrs. E. E. Brownell
 Starr Bruce
 Mr. and Mrs. Ernest A. Bruer
 Frank E. Buck
 Dr. Leonard W. Buck
 Thomas Buck
 Dr. and Mrs. Edward John
 Buckley, Sr.
 Mr. and Mrs. Neil Buckley
 Dr. and Mrs. Bernard O. Burch
 Mr. and Mrs. R. G. Burmister
 Mrs. Patricia M. Butler
 Mrs. Felix Butte
 Mrs. Arthur Bowles Cahill
 John R. Cahill
 Dr. William Otis Callaway
 Mr. and Mrs. George T. Cameron
 Mrs. Lewis G. Carpenter
 Mr. and Mrs. Craig Carrier
 Dr. and Mrs. William A. Carroll
 Dorothy M. Carson
 Thelma D. Carson
 Robert C. Carty
 Mr. and Mrs. H. K. Cassidy
 Mrs. William Cavalier
 Augustine Cazenave
 Mr. and Mrs. John B. Cella
 Mrs. Selah Chamberlain
 Selah Chamberlain, Jr.
 Mr. and Mrs. Elbert M. Chandler
 Mrs. Howard Chann
 Dr. and Mrs. Garnett Cheney
 Dr. and Mrs. Lee S. Cherney
 Mrs. Drew Chidester
 Mrs. W. F. Chipman
 Charles A. Christin
 Mr. and Mrs. Antone Cincotta
 Dr. and Mrs. J. J. Citron
 Mrs. Baylies V. Clark
 S. G. Clark
 Mrs. Tobin Clark
 Mr. and Mrs. Robert A. Clarke
 Mr. and Mrs. Robert E. Clement
 Lindsey W. Cochran
 Mr. and Mrs. John Philip
 Coghlan, Sr.
 Mrs. Betty Cohn
 Mr. and Mrs. George D. Cohn
 Mrs. Max M. Cohn
 Mr. and Mrs. Cedric S. Coldwell
 Mr. and Mrs. Colbert Coldwell
 Persis H. Coleman
 H. D. Collier
 Mr. and Mrs. Jesse C. Colman
 Mr. and Mrs. J. J. Coney
 Mary R. Conlin
 Mr. and Mrs. John Connolly
 James Henry Cooke
 Mrs. Walter B. Cope
 Dr. and Mrs. Frederick C. Cordes
 Alan H. Critcher
 Arthur S. Crites
 Marion Crocker
 Mr. and Mrs. W. W. Crocker
 George E. Crothers
 Dr. and Mrs. Leon Cuenin
 Mrs. Chester Dahl
 Mr. and Mrs. Ture Dahlstrom
 Mr. and Mrs. Alan S. Dale
 Countess Lillian R. Dandini
 Mr. and Mrs. George S. Daniels
 Forrest B. Davidson
 Ralph K. Davies
 Mr. and Mrs. Alvin Davis
 Florence E. Dean
 Mr. and Mrs. Edward Debs
 Mrs. Frank P. Deering
 Mrs. Georges de Latour
 Mrs. Arthur de Lorimier
 Mr. and Mrs. L. Demartini
 Mrs. Walter de Martini
 Mr. and Mrs. Frank H. Denman
 Mr. and Mrs. Richard Detert
 Mrs. Robert T. Devlin
 Mrs. Benjamin H. Dibblee
 Mrs. Donald R. Dickey
 Mrs. B. J. Dietrich
 Mr. J. S. Di Giorgio
 Dr. and Mrs. Victor Dillon
 Mr. and Mrs. Lloyd W.
 Dinkelspiel
 Mrs. Samuel L. Dinkelspiel
 Nathaniel S. Dodge
 Mr. and Mrs. R. Stanley Dollar
 Julie D. Donish
 Dewey Donnell
 Carroll Donner
 Jerome K. Doolan
 Mrs. Zoe G. Dorn
 Mr. and Mrs. Richard E. Doyle
 Mr. and Mrs. Ted Dreyer
 Mr. and Mrs. Walter E. Drobisch
 J. A. Ducournau
 Mrs. J. H. Duhig
 Mr. and Mrs. Harold Robert
 Dunlop
 Mrs. Frank W. Dunn
 Mrs. Charles Dunphy
 Mrs. Dunn Dutton
 Mrs. Jacqueline Margett-Dwyer
 Dr. and Mrs. George Ebright
 Dwight Edwards
 Mrs. Francis Milner Edwards
 Philip S. Ehrlich
 Mr. and Mrs. Albert L. Ehrman
 Alexis L. Ehrman, Jr.
 Mrs. Alfred Ehrman
 Mrs. Joseph Ehrman, Jr.
 Mrs. S. W. Ehrman
 Mr. and Mrs. Sidney M. Ehrman
 John W. Elwood
 Mark C. Elworthy
 Mrs. Carl F. Ernest
 Richard Ernst
 Mrs. Milton H. Esberg
 Milton H. Esberg, Jr.
 Mr. and Mrs. Louis Ets-Hokin
 Judge and Mrs. Herbert W.
 Erskine
 Alfred I. Esberg
 Stella Eisner Eyn
 Mrs. Edward E. Eyre
 Dr. and Mrs. Harold K. Faber
 Mrs. Paul I. Fagan
 Alfred Felner
 Mr. and Mrs. William F. Fielder
 Mrs. Marshal H. Fisher
 Mrs. Grace L. Fisk
 Mr. and Mrs. Mortimer
 Fleishhacker
 Mr. and Mrs. R. G. Follis
 Mrs. O. B. Foote, Jr.
 John F. Forbes
 Mr. and Mrs. Lawrence C. Ford
 Mr. and Mrs. Thomas G. Franck
 Dorothy Frank
 Mrs. Morris Frank

THE SAN FRANCISCO OPERA ASSOCIATION
CONCERT DIVISION

and

THE COVENT GARDEN TRUST

DAVID L. WEBSTER, General Administrator

*In Association with the Arts Council of Great Britain
and the British Council*

present

SADLER'S WELLS BALLET

From the Royal Opera House
Covent Garden, London

Under the Management of S. HUOK

LAVISH PRODUCTIONS
FULL-LENGTH EVENING-LONG BALLET

Eves at 8:30

MON. EVE., OCT. 30
The Sleeping Beauty
Prologue and Three Acts

TUES. EVE., OCT. 31
The Sleeping Beauty
Prologue and Three Acts

WED. EVE., NOV. 1
Les Patineurs
Wedding Bouquet
Checkmate

THURS. EVE., NOV. 2
Les Patineurs
Wedding Bouquet
Checkmate

FRI. EVE., NOV. 3
Wedding Bouquet
The Rake's Progress
Facade

SAT. MAT., NOV. 4
Le Lac des Cygnes
Four Acts

REPERTOIRE

SAT. EVE., NOV. 4
Le Lac des Cygnes
Four Acts

SUN. MAT., NOV. 5
The Sleeping Beauty
Prologue and Three Acts

SUN. EVE., NOV. 5
The Sleeping Beauty
Prologue and Three Acts

TUES. EVE., NOV. 7
The Sleeping Beauty
Prologue and Three Acts

WED. EVE., NOV. 8
Giselle
Two Acts
Facade

THURS. EVE., NOV. 9
The Rake's Progress
Les Patineurs
Dante Sonata

Mats at 2:30

FRI. EVE., NOV. 10
Giselle
Two Acts
Facade

SAT. MAT., NOV. 11
Checkmate
Facade
Dante Sonata

SAT. EVE., NOV. 11
The Rake's Progress
Les Patineurs
Dante Sonata

SUN. MAT., NOV. 12
Le Lac des Cygnes
Four Acts

SUN. EVE., NOV. 12
Le Lac des Cygnes
Four Acts

Full Company Under the Direction of
NINETTE DE VALOIS

World Celebrated Dancers

MARGOT FONTEYN
PAMELA MAY
ALEXIS RASSINE

MOIRA SHEARER
BERYL GREY
HAROLD TURNER
MICHAEL SOMES

ROBERT HELPMANN
VIOLETTA ELVIL
JOHN HART

Company of 150—Corps de Ballet—Symphony Orchestra

TICKETS \$6.00, \$5.40, \$2.40 Tax Included

Opera-Symphony Box Office — Sherman, Clay — SU. 1-1331

WAR MEMORIAL OPERA HOUSE

GUARANTOR MEMBERS—Continued

<p>Mr. and Mrs. J. E. French Mrs. W. H. French Dr. and Mrs. Charles L. Freytag Mr. and Mrs. Eddie Friedman Arthur J. Fritz Angelo A. Fusco Mrs. Nelly Gaffney Louis P. Gainsborough Maurice A. Gale A. Russel Gallaway, Jr. Mrs. Laure Galtie Mrs. Launce John Gamble Crissie Gardner Mrs. Elsie S. Garin Joseph J. Geary Mr. and Mrs. Henry Gede, Jr. Mrs. Gibson Gerlack Ben C. Gerwick D. Lyle Ghirardelli Mr. and Mrs. L. M. Giannini Dr. and Mrs. Arthur Collis Gibson George B. Gillson Mr. and Mrs. Harry Gittings, Jr. Mr. and Mrs. A. Warren Glickman Mr. and Mrs. Louis J. Glicksberg Mr. and Mrs. Maurice L. Goldman Lufie D. Goldstein Mrs. Isaac Goodman Mr. and Mrs. Lester Goodman</p>	<p>Mr. and Mrs. C. Ray Goman Mr. and Mrs. Walter M. Gordon Mr. and Mrs. Joseph T. Grace Mr. and Mrs. Chalmers G. Graham Mrs. Ludovia Graham Mrs. I. M. Green Dr. J. R. Greenberg Mrs. Maurice S. Greenberg Mr. and Mrs. Stuart N. Greenberg Mrs. F. S. Greenlee Farnham P. Griffiths Mr. and Mrs. Berthold Guggenhime Albert Haas C. Nelson Hackett Mrs. Crescent Porter Hale Marshal Hale, Jr. Newton Johnston Hale Mrs. Prentis Cobb Hale Mr. and Mrs. Prentis Cobb Hale, Jr. Randolph Hale Mrs. Arthur Hall Herbert E. Hall Mr. and Mrs. Eminent P. Halsted Mr. and Mrs. Richard C. Ham Dr. Lee Hand Mrs. J. L. Hanna Rupert C. Hansen Mrs. R. D. Harden Mr. and Mrs. Charles L. Harney</p>	<p>Mrs. L. W. Harris Gregory A. Harrison Dr. Marlow B. Harrison Maurice E. Harrison Mrs. Henry H. Hart Dr. and Mrs. Clarence E. Hass Mr. and Mrs. Harry Hastings Mrs. Russell P. Hastings Mrs. Herbert B. Hatch Mr. and Mrs. Elystus L. Hayes Mrs. Timothy Hayes Roy S. Haynes Anne W. Hazen Mrs. D. C. Heger Mrs. E. S. Heller Walter D. Heller Walter S. Heller Mrs. F. J. Hellman Mrs. I. W. Hellman Mr. and Mrs. Charles B. Henderson Mrs. Robert B. Henderson Mrs. Thomas M. R. Herron Mr. and Mrs. William A. Hewitt Dr. Harold A. Hill Mr. and Mrs. Henry Hill Mr. and Mrs. Leslie W. Hills Reuben Wilmarth Hills, III Mr. and Mrs. Harry H. Hilp Mr. and Mrs. Walter J. Hollings Mrs. George H. Holt Hazel G. Holly</p>
-----------------------------------------------------------------------------------------------------------------------------------------------------------------------------------------------------------------------------------------------------------------------------------------------------------------------------------------------------------------------------------------------------------------------------------------------------------------------------------------------------------------------------------------------------------------------------------------------------------------------------------------------------------------------------------------------------------------------------------------------------------------------------------------------------------------------------------	--------------------------------------------------------------------------------------------------------------------------------------------------------------------------------------------------------------------------------------------------------------------------------------------------------------------------------------------------------------------------------------------------------------------------------------------------------------------------------------------------------------------------------------------------------------------------------------------------------------------------------------------------------------------------------------------------------------------------------------------------------------------------------------------------------------------------------	-----------------------------------------------------------------------------------------------------------------------------------------------------------------------------------------------------------------------------------------------------------------------------------------------------------------------------------------------------------------------------------------------------------------------------------------------------------------------------------------------------------------------------------------------------------------------------------------------------------------------------------------------------------------------------------------------------------------------------------------------------------------------------------------------------------------------------------------------------------------

ELIZABETH WILLS

FOR TEN YEARS—
VOICE TEACHER OF

FLORENCE QUARTARARO

METROPOLITAN AND
SAN FRANCISCO OPERAS

701 PINE STREET, SAN FRANCISCO

SUTTER 1-1584

Peter *Giovanzana*

furniture interiors

(Formerly Columbia Furniture Co.)

FURNITURE
CARPETS
FABRICS
ACCESSORIES
WALL PAPER

PACIFIC AVENUE AT POLK STREET

AFTER THE OPERA—

SKIPPER KENT'S

"HAWAIIAN HAM AND EGGS"

BARBECUED SPARERIBS, FAR-EAST CURRIES
ORIGINAL RUM DRINKS—TROPICAL SETTING

1040 COLUMBUS AVENUE at TAYLOR

PRospect 6-3738

PRospect 6-3737

WHEN IN OAKLAND, SKIPPER KENT'S "ZOMBIE VILLAGE"
6485 SAN PABLO AVENUE

OLympic 2-9113



CURRAN THEATRE, San Francisco
BERKELEY COMMUNITY THEATRE
 Berkeley

Tropicana Revue

Tues., Oct. 17—8:30 P.M. Berkeley Comm. Theatre

Talley Beatty and his New York company in their only Bay Area performance of their highly acclaimed dance spectacle.

Little Singers from Paris

Sat., Nov. 18—8:30 P.M. Berkeley Comm. Theatre

Sun., Nov. 19—2:30 P.M. Curran Theatre

First transcontinental tour of the internationally famous, forty-voice French boys' choir, "Little Singers of the Wooden Cross."

Mary Garden

Sun., Nov. 26—8:30 P.M. Curran Theatre

Tues., Nov. 28—8:30 P.M. Berkeley Comm. Theatre

The one and only Mary Garden, here for the first time in seventeen years, entertaining audiences with the tall and true tales of her fabulous career.

Josef Marais and Miranda

Sat., Feb. 24—8:30 P.M. Berkeley Comm. Theatre

Sun., Feb. 25—2:30 P.M. Curran Theatre

The most popular of all concert balladeers singing their inimitable arrangements of "Songs of the African Veld and Other Folk Music."

Halprin-Lathrop Theatre Dance Group

Sun., Mar. 25—2:30 P.M. Curran Theatre

Wed., Mar. 28—8:30 P.M. Berkeley Comm. Theatre

A program highlighted by new numbers and old favorites brilliantly presented by the most rapidly rising dance stars on the West Coast.

Package Deal Tickets Now

OPERA-SYMPHONY BOX OFFICE
 Sherman, Clay & Co., San Francisco
 Sutter 1-1331
 Four Events: \$7.50, \$6.00, \$4.00
 Tax Incl.

BREUNER'S BOX OFFICES
 Oakland: TWinoaks 3-4048
 Berkeley: THornwall 3-3801
 Five Events: \$9.00, \$7.00, \$5.00
 Tax Incl.

Single Seats: \$2.40, \$1.80, \$1.20, Tax Included

GUARANTOR MEMBERS—Continued

Mr. and Mrs. G. Austin Holt
 C. J. Holzmueller
 Osgood Hooker
 L. Arundel Hopkins
 Mrs. H. A. Hornlein
 Mrs. Simon Hornstein
 Mr. and Mrs. Thomas Carr
 Howe, Jr.
 Mr. and Mrs. J. W. Howell
 Robert Hulbert
 Mrs. Philip T. Hull
 Jacquelin H. Hume
 Mr. and Mrs. Phelps Stokes
 Hunter
 Marian Huntington
 Dr. Irving S. Ingber
 Dr. S. Nicholas Jacobs
 Mr. and Mrs. Tevis Jacobs
 Mrs. Conrad Jansen
 Robert J. Jansen
 Mrs. B. C. Jesena
 Frederic H. Johnson
 Gustaf Frederick Johnson
 Mr. and Mrs. Willard L.
 Johnson
 Mr. and Mrs. Clarence Loran
 Johnson
 Mrs. A. G. Jones
 Mr. and Mrs. Nelson E. Jones
 Mr. and Mrs. William Josephian
 General and Mrs. Kenyon Joyce
 Mr. and Mrs. Jean Juilliard
 KGO--American Broadcasting
 Company
 Mrs. Ira Kahn
 Samuel Kahn
 Mr. and Mrs. Henry J. Kaiser
 H. C. Kaplow
 Mr. and Mrs. Augustin C. Keane
 Mrs. Charles J. Keenan
 Mr. and Mrs. Edward D. Keil
 Mrs. P. J. Kelley
 Charles Kendrick
 Marion H. Kent

Ida Breit Kessler
 Mrs. Elizabeth O. Kiechle
 Mrs. Kenneth Kilpatrick
 Mr. and Mrs. Arthur Dale King
 Percy L. King
 Frank E. Kitchens
 Mrs. Josephine R. Kleinjung
 Paul L. Kleinsorge
 Mrs. William E. Kleinsorge
 John E. Kleiser
 Mr. and Mrs. William R. Knapp
 Mrs. Samuel Knight
 Mr. and Mrs. John Bryant Knox
 Caroline Korb
 Elsa R. Korb
 Mrs. Abraham Koshland
 Mrs. Jesse Koshland
 Mrs. Marcus S. Koshland
 Frederick J. Koster
 Dr. and Mrs. Henry A. R.
 Kreuzmann
 Mr. and Mrs. Edwin V. Krick
 Mrs. Clarence Krieger
 Valentine Kriloff
 Esther Kuenz
 Joseph C. Lacey
 Mrs. George S. Lachman
 Mr. and Mrs. Gustave Lachman
 G. Arthur Lachman
 Stanley Philips Lachman
 Mr. and Mrs. Glenn Lane
 Mrs. Albert G. Lang
 Mrs. H. M. Lawrence
 Nancy E. Lawson
 Arthur P. Lazarus
 Kenneth Leitch
 Dr. and Mrs. Milton B. Lennon
 Mr. and Mrs. Walter A. Leonetti
 John A. Lesoine
 Mr. and Mrs. John G. Levison
 Donald E. Levy
 Mr. and Mrs. Donald McLeod
 Lewis
 Mr. and Mrs. G. Irwin Lewis

Mrs. Jesse Lillienthal
 Philip N. Lillienthal
 Mr. and Mrs. Samuel Lillienthal
 Bohm C. Lindemann
 Mr. and Mrs. W. J. Lindenberg
 Manne Lindholm
 Mr. and Mrs. Paul Lindsey
 Mr. and Mrs. Robert Lockwood
 Lipman
 Mrs. Norman B. Livermore
 Lawrence Livingston
 Mr. and Mrs. James K. Lochead
 Mr. and Mrs. John S. Logan
 Mr. and Mrs. Dan London
 E. A. Long
 James Rowland Lowe
 Amy D. Lowengart
 Mrs. Alan J. Lowrey
 Mrs. Angelo Lucido
 Jack H. Lund
 Louis R. Lurie
 Robert Lym, Jr.
 Mr. and Mrs. Edmunds Lyman
 Melvin E. Lyon
 James W. McAlister
 Mrs. Thomas R. McCarron
 Mrs. Robbins McCormick
 Mrs. W. H. McCormick
 Mr. and Mrs. F. H. McCreary
 Mrs. Richard S. McCreery
 Mrs. Selby McCreery
 Mrs. Mark L. McDonald
 E. L. McDonnell
 Mrs. Felix S. McGinnis
 Mr. and Mrs. M. B. McGowan
 Mrs. Ann McInerney
 Mr. and Mrs. Charles E.
 McKinnie
 Mr. and Mrs. Andrew C.
 McLaughlin, Jr.
 Florence T. McLelland
 Mr. and Mrs. Fred W. McNear
 Mrs. George P. McNear
 Mr. and Mrs. Victor Maas

THE RIEDEL STUDIO OF OPERA

is now located at 228—20th Avenue, San Francisco

Auditions by Appointment

Telephone: SKYline 1-3829

For exotic food delicacies
 from the 4 corners of
 the world, visit . . .

George Mardikian's
WORLD-FAMOUS
OMAR KHAYYAM'S
 RESTAURANT
 & RUBAIYAT COCKTAIL LOUNGE



PHONE
SUTTER 1-1010

Omar Khayyam's also serves your favorite American dishes, such as juicy charcoal broiled steaks, roast Fresno turkey, baked Virginia ham, etc. • Enjoy your favorite cocktail in the Rubaiyat Cocktail Lounge (where the famous "Omar's Delight" was created).

OFARRELL AT POWELL STREET

QUALITY

Style . . . and a reputation
in the making of smart
Men's Clothing . . .

WILLIAMS AND BERG CO.

GENERAL ENGLISH TAILORS

110 SUTTER STREET

FRENCH AMERICAN BANK BUILDING



693 SUTTER STREET
SAN FRANCISCO • ORdway 3-7426

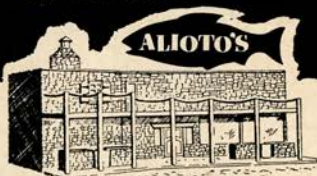
VIENI-VIENI CAFE

OPERATIC ENTERTAINMENT

ELIZABETH PHARRIS, *Contralto*
ARLINE WHITNER, *Soprano*
EDA MORELLI, *Soprano*
ED SCHEMBS, *Tenor*
E. PORCINI, *Baritone*
JOSEPH LO DUCA, *Pianist*

1313 Stockton St. near Broadway

COME AND SEE THE NEW
ALIOTO'S
on Fisherman's wharf



LOOK FOR THE SIGN OF THE BIG FISH

GUARANTOR MEMBERS—Continued

- | | | |
|---------------------------------------------------------------------------------------------------------------------------------------------------------------------------------------------------------------------------------------------------------------------------------------------------------------------------------------------------------------------------------------------------------------------------------------------------------------------------------------------------------------------------------------------------------------------------------------------------------------------------------------------------------------------------------------------------------------------------------------------------------------------------------------------------------------------------------------------------------------------------------------------------------------------------------------------------------------------------------------------------------------------------------------------------------------------------------------------------|---------------------------------------------------------------------------------------------------------------------------------------------------------------------------------------------------------------------------------------------------------------------------------------------------------------------------------------------------------------------------------------------------------------------------------------------------------------------------------------------------------------------------------------------------------------------------------------------------------------------------------------------------------------------------------------------------------------------------------------------------------------------------------------------------------------------------------------------------------------------------------------------------------------------------------------------------------------|-------------------------------------------------------------------------------------------------------------------------------------------------------------------------------------------------------------------------------------------------------------------------------------------------------------------------------------------------------------------------------------------------------------------------------------------------------------------------------------------------------------------------------------------------------------------------------------------------------------------------------------------------------------------------------------------------------------------------------------------------------------------------------------------------------------------------------------------------------------------------------------------------------------------------------------------------------------------------------------------------------------------------------------------------------------------------------------------------------|
| <p>Mrs. William Mackenzie
Mr. and Mrs. John B. Mackinlay
Mr. and Mrs. Parker S. Maddux
Mr. and Mrs. Marshall P. Madison
Mr. and Mrs. Grover A. Magnin
Mr. and Mrs. H. A. Magnuson
Frank D. Mahoney
Mrs. J. W. Mailliard, Jr.
Mrs. Thomas Page Mailliard
Mr. and Mrs. Joseph A. Mancini
Mr. and Mrs. George M. Mann
Mr. and Mrs. George M. Mardikian
Mrs. Randolph Wyatt Martenet
A. C. Mattei
Mr. and Mrs. Harry D. Maxwell
Mr. and Mrs. R. A. May
Mr. and Mrs. Roy Mayo
Dr. and Mrs. George Melody
Mrs. Verona A. Melletz
Evelyn Mendessolle
Mr. and Mrs. Wm. Gladstone Merchant
Edith A. Merein
Mrs. R. P. Merillion
Mr. and Mrs. Gaetano Merola
E. Olga Meyer
Julian J. Meyer
Mr. and Mrs. Van V. Midgely
Mrs. Effie C. Milius
Albert K. Miller
Mr. and Mrs. C. O. G. Miller
Mrs. Epps J. Miller
Mr. and Mrs. Paul A. Miller
Mr. and Mrs. Robert F. Miller
Mr. and Mrs. Robert Watt Miller
Mr. and Mrs. Edward M. Mills
Mrs. Maxwell C. Milton</p> | <p>Mrs. Randolph Huntington Miner
Mr. and Mrs. Mitchel L. Mitchell
Mr. and Mrs. Sidney Modlin
Mrs. Edward F. Moffatt
James K. Moffitt
Charles W. Moisson
Mario Mondin
Mr. and Mrs. Kenneth Monteagle
Mr. and Mrs. Paige Monteagle
Frederick H. Montgomery
Mr. and Mrs. E. Geoffrey Montgomery
Mrs. Joseph A. Moore
Anthony C. Morici
Mrs. Philip C. Morse
Mrs. H. D. Mortenson
Mr. and Mrs. Raymond M. Mosher
Leo J. Murphy
Guido J. Musto
Laura Musto
Helen E. Myers
Mr. and Mrs. E. M. Nagel
Mr. and Mrs. Ralph R. Nelson
Richard W. Nelson
Julia M. Neppert
Mrs. Alfred Newman
Mr. and Mrs. John Francis Neylan
Mr. and Mrs. George W. Nickel
Mr. and Mrs. J. Leroy Nickel, Jr.
Dr. and Mrs. Charles A. Noble, Jr.
William Holt Noble
Mrs. C. A. Norris
H. Edwin Nowell
Mrs. Deborah C. O'Brien
Richard J. O'Brien</p> | <p>Mrs. Mary L. Obujen
George R. O'Connor
Harry Ogilvie
Mr. and Mrs. Benjamin J. Older
Mr. and Mrs. Edwin Letts Oliver
Mr. and Mrs. Roland Letts Oliver
Mrs. Warren Olney, Jr.
Mr. and Mrs. Ralph P. Olsen
E. Whitney Olson
Mr. and Mrs. William H. Orrick
Mr. and Mrs. Dudley E. Ott
Mr. and Mrs. W. Wallace Owen
Charles Page
Mr. and Mrs. Charles R. Page
Mrs. S. H. Palmer
Dr. Sadie D. Patek
J. W. Pauson
D. D. Peebles
Helen M. Perkins
Mr. and Mrs. T. S. Petersen
G. Baltzer Peterson
Mrs. Seabury B. Peterson
Mr. and Mrs. Louis A. Petri
Mr. and Mrs. Herman Phleger
Mrs. Milton Pilhashy
Mr. and Mrs. Gioacchino Pisani
Mr. and Mrs. H. D. Pischel
Jules S. D. Podesta
Mr. and Mrs. Jerome V. Powell
Mr. and Mrs. Stanley Powell
Walter T. Prendergast
Mr. and Mrs. B. W. Price
Mr. and Mrs. John B. Quigley
Joan Quigley
Vinice E. Rains
Mrs. Carl Raiss
Mr. and Mrs. Charles Hamilton Raven
Dr. and Mrs. Frederick Leet Reichert</p> |
|---------------------------------------------------------------------------------------------------------------------------------------------------------------------------------------------------------------------------------------------------------------------------------------------------------------------------------------------------------------------------------------------------------------------------------------------------------------------------------------------------------------------------------------------------------------------------------------------------------------------------------------------------------------------------------------------------------------------------------------------------------------------------------------------------------------------------------------------------------------------------------------------------------------------------------------------------------------------------------------------------------------------------------------------------------------------------------------------------|---------------------------------------------------------------------------------------------------------------------------------------------------------------------------------------------------------------------------------------------------------------------------------------------------------------------------------------------------------------------------------------------------------------------------------------------------------------------------------------------------------------------------------------------------------------------------------------------------------------------------------------------------------------------------------------------------------------------------------------------------------------------------------------------------------------------------------------------------------------------------------------------------------------------------------------------------------------|-------------------------------------------------------------------------------------------------------------------------------------------------------------------------------------------------------------------------------------------------------------------------------------------------------------------------------------------------------------------------------------------------------------------------------------------------------------------------------------------------------------------------------------------------------------------------------------------------------------------------------------------------------------------------------------------------------------------------------------------------------------------------------------------------------------------------------------------------------------------------------------------------------------------------------------------------------------------------------------------------------------------------------------------------------------------------------------------------------|

*Carlo
Luisa*

MICHELETTI

Teachers of Singing

Languages—Art of Bel Canto—Interpretation—Beginners to Professionals

Diamond 4-6411

424 Virginia Avenue, San Mateo, Calif.

} Voice

EASTON KENT, Teacher of Singing

Teacher of Stanley Noonan, Charles Harmon, June Wilkins

STUDIO, 2415 LARKIN STREET, SAN FRANCISCO

Telephone: GRaystone 4-7973



TED LEWIS

*First attraction of the re-opened Bal Tabarin,
the West's most celebrated theatre-restaurant.*

**HERE WITH HIS WORLD FAMOUS ORCHESTRA
AND HIS OWN COMPLETE REVUE**

Dinner • Dancing • Late Snacks • Shows 8:40 and 12

BAL TABARIN

THEATRE RESTAURANT • 1025 COLUMBUS AVE. • ORdway 3-3030

THE CONCERT DIVISION OF THE
San Francisco Opera Association

GAETANO MEROLA, *General Director*

PAUL POSZ, *Manager*

SEASON 1950 - 1951

IRRESISTIBLE ATTRACTIONS

Monday Evening, October 30 to
Sunday Evening, November 12
SADLER'S WELLS BALLET

Monday Evening, November 20 to
Sunday Evening, November 26
**BALLET RusSE DE MONTE
CARLO**

Monday Evening, November 27
MARYLA JONAS, *Pianist*

Tuesday Evening, December 5
DOROTHY MAYNOR, *Soprano*

Wednesday Evening, January 3
JOSEPH SZIGETI, *Violinist*

Tuesday Evening, January 30
WILLIAM KAPELL, *Pianist*

Tuesday Evening, February 6
ELENA NIKOLAIDI, *Contralto*

Tuesday Evening, May 1
HELEN TRAUBEL, *Soprano*

Tuesday Evening, May 22
GIUSEPPE DI STEFANO, *Tenor*

TICKET PRICES

Sadler's Wells Ballet: \$6.00, \$5.40, \$2.40, Tax Included
Ballet Russe: \$3.60, \$3.00, \$2.40, \$1.80, \$1.20, Tax Included

All Other Attractions
\$3.00, \$2.40, \$1.80, \$1.50, \$1.20, Tax Included

Opera-Symphony Box Office — Sherman, Clay — SU. 1-1331

WAR MEMORIAL OPERA HOUSE

SAN FRANCISCO CONSERVATORY of MUSIC, Inc.

3435 SACRAMENTO STREET — Walnut 1-3496

announces

OPERA CLASSES under MR. KURT ADLER
OPERATIC ACTING under MR. ARMANDO AGNINI
both of the San Francisco Opera Co.

BACHELOR OF MUSIC DEGREE
Artist's Diploma and Pedagogy Certificate in All Instruments and Voice
Special Classes in Singing and Musicianship for Children

GUARANTOR MEMBERS—Continued

<p>Mrs. George G. Reinle Robert S. Reis Dr. Ralph A. Reynolds Mr. and Mrs. Neville J. Rich Mrs. Herbert W. Richards Mr. and Mrs. Hermann A. Richardson Mrs. W. J. Richardson Mr. and Mrs. Wm. P. Roth Mr. and Mrs. Milo R. Robbins Dr. James W. Roberts Mr. and Mrs. Gregory Robinson Mrs. John Alvah Robinson Theodore Roche, Jr. Mrs. Nathan Rogers Mrs. Edward M. Rolklin Loma Roll Col. and Mrs. Robert A. Roos Mr. and Mrs. Ralph S. Rose Leland S. Rosener Alexander F. Ross Donald L. Ross Mr. and Mrs. Edmund A. Rossi John Rothschild Ken F. Royce David Rubenstein Mr. and Mrs. A. S. Russell Mrs. Henry P. Russell Mr. and Mrs. Leon B. Russell Michael Joseph Ryan Mrs. Nicholas M. Sahati Mr. and Mrs. George Saks San Francisco Opera Guild Mr. and Mrs. Charles R. Sargent Mrs. M. J. Savage Elizabeth Scamman Robert H. Scanlon Mr. and Mrs. Karl Schaefer Mr. and Mrs. Carl Schaubye Elsie Schilling Mrs. Walter Schilling George B. Schirmer Nat Schmulowitz Allison E. Schofield Dr. and Mrs. Guy Schoonmaker Helen M. Schroeder Adolph P. Schuman Mrs. Frank Schwabacher James H. Schwabacher Mrs. Louis A. Schwabacher Harry S. Scott M. Sedgely Mrs. A. Setrakian R. S. Shainwald Harold M. Shanzer Mrs. Nelson Towne Shaw</p>	<p>Fred R. Sherman Clarissa Shortall Mr. and Mrs. Roy L. Shurtleff Richard O. Simon Ray Simonds Mrs. N. J. Sinclair Paul A. Sinsheimer Mrs. Edgar Sinton Genevieve Six Judge and Mrs. M. C. Sloss De Lancey C. Smith Ferdinand C. Smith Mr. and Mrs. Samuel M. Smith Mr. and Mrs. H. M. Snyder Jack Soderlund G. Willard Somers Mr. and Mrs. Leslie E. Spelman Eldridge T. Spencer Mr. and Mrs. Clifford O. Spurgeon Orla St. Clair Mr. and Mrs. Eric Stanford Mrs. Edward B. Stanwood Dr. and Mrs. John H. Stark G. A. Starkweather Mrs. Harold S. Stein Mrs. Charles W. Steines Miss Gynne R. Stern Mr. and Mrs. Ralph J. A. Stern Mrs. Sigmund Stern Mr. and Mrs. George Jerome Stickney Claude Albon Stiehl George Stimmel Frank D. Stout Benka Strickler John Strickler Dr. and Mrs. John Philip Strickler Mrs. Clara Stroh Mr. and Mrs. Walter H. Sullivan Ernest J. Sultan Bert Orrell Summers Mrs. Alfred Sutro Mr. and Mrs. Oscar Sutro, Jr. Louis Sutter Dr. Wilber F. Swett Benjamin H. Swig Mrs. Andrew B. Talbot Mr. and Mrs. Arnold Ternquist George S. Terrill George C. Thierbach Joseph M. Thomas Mrs. William Timson C. R. Tobin Mr. and Mrs. J. O. Tobin Mr. and Mrs. Richard M. Tobin</p>	<p>Mr. and Mrs. Joseph M. Tonkin Ernest J. Torregano Dr. and Mrs. Harold Guyon Trimble Mr. and Mrs. Dwight K. Tripp Mrs. Alfred S. Tubbs Mrs. Nion Tucker Mrs. Barbara B. Turner Mr. and Mrs. Burton B. Turner Mrs. William B. Tyler Mrs. John Upton Mr. and Mrs. Ernst D. Van Loben Sels Mrs. Jack Verdi Paul Verdier Emma Domb Vigdor Dr. and Mrs. C. E. Voigt Mrs. Daniel Volkmann Johanna M. Volkmann Dr. E. P. M. von Gehren Dr. and Mrs. Hans von Geldern Mr. and Mrs. A. H. von Hafften George Wagner Mrs. Willis Walker C. B. Wallace Dr. D. G. Wallace Morton Wallace Whitney Warren Mr. and Mrs. Karl Christian Weber E. J. Wegener Michel D. Weill Shirley Weissich Dr. and Mrs. H. M. Weyrauch Dr. and Mrs. T. J. Whalen Mr. and Mrs. George B. White Robert L. Wiel Mr. and Mrs. George M. Wihr Mr. and Mrs. Brayton Wilbur George H. Wilcoxson Mr. and Mrs. Charles F. Williams Florence A. Williams W. F. Williamson Mr. and Mrs. Walter F. Willmette Mr. and Mrs. G. G. Wills Mrs. J. L. Wolf Marguerite Wolfson Mr. and Mrs. Gilbert S. Woods Mrs. Theodore Wores Mr. and Mrs. Max Woulf Col. and Mrs. Allen G. Wright Mr. and Mrs. J. Perry Yates Mrs. V. Zaruba Harold L. Zellerbach J. D. Zellerbach Edgar T. Zook</p>
------------------------------------------------------------------------------------------------------------------------------------------------------------------------------------------------------------------------------------------------------------------------------------------------------------------------------------------------------------------------------------------------------------------------------------------------------------------------------------------------------------------------------------------------------------------------------------------------------------------------------------------------------------------------------------------------------------------------------------------------------------------------------------------------------------------------------------------------------------------------------------------------------------------------------------------------------------------------------------------------------------------------------------------------------------------------------------------------------------------------------------------------------------------------------------------------------------------------------------------------------------------------------------------------------------------------------------------------------------------------------------------------------------------------------------------------------------------------------------------------------------------------------------------------------------------------------------------------------------------------------------------------------------------------------------------------------------------------------------------------------------------------------------------------------------------------------------------------------------------------------------------------------------------------------------------------------------------------------------	--------------------------------------------------------------------------------------------------------------------------------------------------------------------------------------------------------------------------------------------------------------------------------------------------------------------------------------------------------------------------------------------------------------------------------------------------------------------------------------------------------------------------------------------------------------------------------------------------------------------------------------------------------------------------------------------------------------------------------------------------------------------------------------------------------------------------------------------------------------------------------------------------------------------------------------------------------------------------------------------------------------------------------------------------------------------------------------------------------------------------------------------------------------------------------------------------------------------------------------------------------------------------------------------------------------------------------------------------------------------------------------------------------------------------------------------------------------------------------------------------------------------------------------------------------------------------------------------------------------------------------------------------------------------------------------------------------------------------------------------------------------------------------------------------------------------------------------------------------------------------------------------------------------------------------	------------------------------------------------------------------------------------------------------------------------------------------------------------------------------------------------------------------------------------------------------------------------------------------------------------------------------------------------------------------------------------------------------------------------------------------------------------------------------------------------------------------------------------------------------------------------------------------------------------------------------------------------------------------------------------------------------------------------------------------------------------------------------------------------------------------------------------------------------------------------------------------------------------------------------------------------------------------------------------------------------------------------------------------------------------------------------------------------------------------------------------------------------------------------------------------------------------------------------------------------------------------------------------------------------------------------------------------------------------------------------------------------------------------------------------------------------------------------------------------------------------------------------------------------------------------------------------------------------------------------------------------------------------------------------------------------------------------------------------------------------------------------------------------------------------------------------------------------------------------------------------------------------------------------------------------------

STELLA SPRAGUE BEST

Italian Method • Bel Canto • Pupils prepared for Grand Opera and Concert

For Appointments Call GRaystone 4-2786

LAWRENCE STRAUSS

SINGER . . . TEACHER

3187 CLAY STREET

WAlnut 1-9044

JAPANESE FOODS AT THEIR BEST

LUNCHEON • DINNER

*If you prefer dine in real Japanese style in our
 Ozashiki rooms*

717 CALIFORNIA ST. AT GRANT AVENUE

Yamato
 Sukiyaki House

CONTRIBUTORS TO 1950 SEASON

<p>The Baldwin Piano Company Mr. and Mrs. David Benioff City of Paris City Transfer & Storage Company Davis Schonwasser Co. The Emporium Nelly Gaffney Mr. and Mrs. L. M. Giannini Hale Bros. Hotel Mark Hopkins</p>	<p>Jenkel-Davidson Optical Co. H. Liebes & Company Livingston Bros. Macy's I. Magnin Company J. Magnin & Company Maison Mendessolle Ransohoff's Roos Bros. Schneider Bros. Inc. Shreve & Company</p>	<p>Sir Francis Drake Hotel Sommer & Kaufmann Standard Oil Co. of California Theatrical Stage Employees Union, Local No. 16 Weinstein Co. Inc. The White House A. Wilbur Woodruff Yellow Cab Co.</p>
--------------------------------------------------------------------------------------------------------------------------------------------------------------------------------------------------------------------------------------------------------------	----------------------------------------------------------------------------------------------------------------------------------------------------------------------------------------------------------------------------------------------------------	-------------------------------------------------------------------------------------------------------------------------------------------------------------------------------------------------------------------------------------

ACKNOWLEDGMENT

We again acknowledge with grateful appreciation the generously donated use of the Emporium auditorium and facilities for chorus rehearsals this year which meant both a great convenience and a substantial saving to the Opera Company. We also desire to express our deep gratitude to Miss Alice Hager for her splendid gift of French period furniture.

SAN FRANCISCO OPERA ASSOCIATION



DAINI BROS.

Since 1920

DISTINCTIVE HAND CARVED
AND IMPORTED

FURNITURE

PACIFIC AT POLK

ORdway 3-4548

SAN FRANCISCO

RESTAURANT of DISTINCTION
• FEATURING •
ITALIAN CUISINE
CHARCOAL BROILER
REFRESHING DRINKS

P anelli's

453 PINE DOuglas 2-7198

COMPLIMENTING THE
OPERA SEASON

HANCOCK BROS.

BONDED TICKET PRINTERS

25 Jessie St., San Francisco 5, Calif., DO 2-2191



In San Francisco

HOTEL WHITCOMB

At the Civic Center
... so conveniently near the Opera House. Excellent cuisine and service.

Garage in Building

KARL C. WEBER
President and
General Manager

THE 3 LITTLE SWISS.

"THE BEST FOOD FOR THE BEST PEOPLE"

**SAINT MORITZ
RESTAURANT
530 BROADWAY**



A Diamond . . . not only for the moment, but forever!

GENSLER-LEE

sells more

DIAMONDS

than any other jeweler

in the west

STORES ALL OVER CALIFORNIA TO SERVE YOU • TAKE A YEAR TO PAY •

Which cigarette is Milder...

"Yes, Chesterfields are
so much Milder"

Joan Caulfield

STARRING IN "THE PETTY GIRL"
A COLUMBIA TECHNICOLOR PICTURE

BE YOUR OWN CIGARETTE EXPERT

says - *Ralph A. Goss*

PROMINENT TOBACCO FARMER,
DURHAM, N. C.

- A** YOU buy a pack of Chesterfields and you open it up.
- B** YOU smell that milder Chesterfield aroma. No other cigarette has it.
- C** YOU smoke Chesterfields and prove what every tobacco man knows...

tobaccos that Smell Milder
Smoke Milder

Ralph A. Goss

Always Buy CHESTERFIELD

THE CIGARETTE THAT SMELLS MILDER AND SMOKES MILDER