

Die Walküre

1945

Tuesday, October 9, 1945 8:00 PM

SFO_PUB_01_SFO_1945_17

Publications Collection

San Francisco Opera Archives

Twenty-third Annual Season
San Francisco Opera Association
Gietano Merola General Director



War Memorial Opera House
September 25 to October 27

1945

An Invitation

TO THE WOMAN OF AFFAIRS

To every woman, her security is precious—a necessity. But the details of looking after the stocks, bonds, real estate, and other assets which provide that security are often too burdensome for any one person.

A woman can simplify her affairs, and better secure her future, just as many busy men do, by letting financial specialists shoulder part, or all, of this burden of asset management—buying, selling, exchanging, redeeming securities; leasing, repairing, insuring property; computing and paying taxes—problems ever changing, never ending.

Our Trust Service can protect and preserve her interests in many ways—advising, managing, carrying out her wishes with skilled knowledge and experience.

Have a chat with one of our Trust Officers. There will be no obligation.

TRUST DEPARTMENT

1 Sansome Street • San Francisco

20 other California offices





● Most all famous names in the world of music are exclusive with Sherman, Clay: the immortal Steinway, Chickering, and other fine pianos; the Hammond organ; the Capehart, Conn, Gibson and other fine band and orchestra instruments. Now, as it has been for 75 years, music lovers look to Sherman, Clay for everything fine in music.

SHERMAN, CLAY'S 8 PACIFIC COAST STORES ARE LOCATED IN
SAN FRANCISCO • OAKLAND • SAN JOSE • SACRAMENTO • FRESNO • PORTLAND • SEATTLE

City  Paris



Christian

Sinuous ripple of fringe . . .
inspired magnificence on
a sculptured black sheath
and dramatic cape.

The Gown Salon, Third Floor



G A E T A N O M E R O L A

G E N E R A L

D I R E C T O R

S A N F R A N C I S C O O P E R A C O M P A N Y

YOU'LL BE GLAD
YOU WAITED FOR

Kirk



... because sterling by Kirk, America's oldest silversmiths, has been a treasured possession in American homes for over a century... cherished for its superb weight, finish and proportion. Although we may not have unlimited quantities of Repousse and other inimitable Kirk patterns on hand at all times you may be sure that your order will be filled as rapidly as possible.

Granat Bros
SHREVE TREAT & EACRET

EXCLUSIVE AGENT FOR KIRK SILVER
IN NORTHERN CALIFORNIA

SAN FRANCISCO OPERA ASSOCIATION



OFFICERS

KENNETH MONTEAGLE
PRESIDENT

MRS. STANLEY POWELL
VICE-PRESIDENT

ARTHUR MERRILL BROWN, JR.
VICE-PRESIDENT

CHARLES R. BLYTH
VICE-PRESIDENT

GEORGE T. CAMERON
TREASURER

EDWARD F. MOFFATT
SECRETARY

BOARD OF DIRECTORS

GEORGE WASHINGTON BAKER, JR.
CHARLES R. BLYTH
ARTHUR MERRILL BROWN, JR.
GEORGE T. CAMERON
WILLIAM W. CROCKER
MORTIMER FLEISHHACKER

TIMOTHY HEALY
KENNETH MONTEAGLE
JOHN FRANCIS NEYLAN
MRS. STANLEY POWELL
MRS. HENRY POTTER RUSSELL
NION R. TUCKER

EXECUTIVE STAFF

PAUL POSZ
BUSINESS MANAGER

CURRAN SWINT, PUBLICITY DIRECTOR

ARTHUR FRAHM-LALIA DECKER
KATHLEEN LAWLOR
TICKET SALES

EVELYN CROCKETT-GERALD G. ROSS
PHYLLIS AMATI
OFFICE SECRETARIES

VETERANS OF WORLD WAR II!

If you are interested in a Home Loan

*... whether a: **GI Loan***

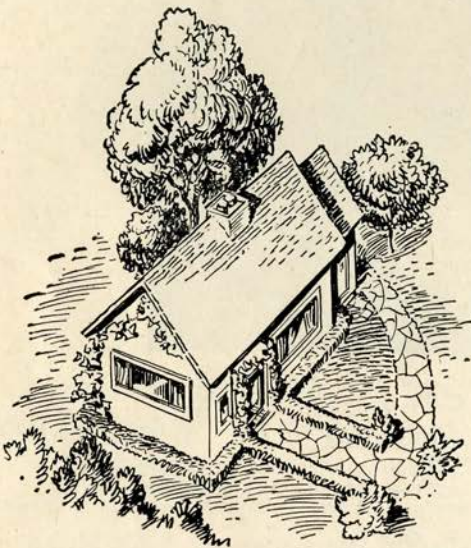
an

FHA Loan

or a

Bank Loan

*call at any of our
seven offices*



INCORPORATED FEBRUARY 10, 1868

THE SAN FRANCISCO BANK

Savings

Member Federal Deposit Insurance Corporation

Trust

526 California Street, San Francisco

Mission and Twenty-first Streets
Clement Street and Seventh Avenue
1528 Fillmore Street

Haight and Belvedere Streets
West Portal Avenue and Ulloa Street
1435 Burlingame Avenue, Burlingame

PARKER S. MADDUX, *President*

BOARD OF GOVERNORS

GEORGE WASHINGTON BAKER, JR.	REUBEN B. HALE	MRS. JOHN FRANCIS NEYLAN
P. A. BERGEROT	MRS. LAWRENCE W. HARRIS	JOHN FRANCIS NEYLAN
CHARLES R. BLYTH	J. EMMET HAYDEN	ETTORE PATRIZI
J. BRENDAN BRADY	TIMOTHY HEALY	RALPH L. PHELPS
H. SEWALL BRADLEY	EDWARD D. KEIL	MRS. M. C. PORTER
ARTHUR MERRILL BROWN, JR.	CHARLES H. KENDRICK	MRS. STANLEY POWELL
GUIDO CAGLIERI	MRS. MARCUS S. KOSHLAND	STANLEY POWELL
MRS. GEORGE T. CAMERON	LEWIS A. LAPHAM	ANGELO J. ROSSI
GEORGE T. CAMERON	MRS. STINE LEIS	MRS. HENRY POTTER RUSSELL
CHARLES A. CHRISTIN	J. B. LEVISON	A. SBARBORD
TEMPLETON CROCKER	MISS EDITH LIVERMORE	FRED R. SHERMAN
WILLIAM W. CROCKER	M. E. LOMBARDI	PAUL SHOUP
GEORGE E. CROTHERS	MISS RUTH W. LORING	MRS. M. C. SLOSS
MRS. FRANK P. DEERING	MISS SALLIE MAYNARD	RALPH J. A. STERN
MISS MARY C. DUNHAM	WILLIAM GLADSTONE MERCHANT	MRS. SIGMUND STERN
SIDNEY M. EHRMAN	MRS. C. D. G. MILLER	MRS. DAVID ARMSTRONG TAYLOR
MRS. WILLIAM M. FITZHUGH	ROBERT W. MILLER	M. C. THRELKELD
MORTIMER FLEISHHACKER	EDWARD F. MOFFATT	NION R. TUCKER
A. P. GIANNINI	KENNETH MONTEAGLE	RANDOLPH C. WALKER
RANDOLPH HALE	GUIDO MUSTO	WHITNEY WARREN, JR.



WAR MEMORIAL OPERA HOUSE

(OWNED AND OPERATED BY THE CITY AND COUNTY OF SAN FRANCISCO
THROUGH THE BOARD OF TRUSTEES OF THE WAR MEMORIAL)

BOARD OF TRUSTEES

CHARLES B. KLEUPFER PRESIDENT	GUIDO J. MUSTO VICE-PRESIDENT	WALTER A. LEONETTI
SIDNEY M. EHRMAN	WILBUR A. HENDERSON	RICHARD H. NEWHALL
ALVIN GERLACK	DAN S. HEWITT	RALPH J. A. STERN
D. LYLE GHIRARDELLI	J. BRUCE JONES	

EDWARD SHARKEY
MANAGING DIRECTOR OF
THE WAR MEMORIAL

IRA G. THOMPSON
SECRETARY TO THE BOARD
OF TRUSTEES

Buffet Service in Basement Promenade and Dress Circle during all performances

LIBRETTOS AND OPERA GLASSES IN FOYER . HEAD SETS FOR THE DEAF ARE
AVAILABLE AT TABLE IN MAIN FOYER . ATTENDANT WILL CONNECT
WITH SEAT LOCATION UPON REQUEST . FOR LOST AND FOUND
INFORMATION, INQUIRE AT CHECK ROOM NO. 1

WILLIAM A. MEADE, DIRECTOR OF HOUSE SERVICE



*Over a
Century of furnishing
America's Homes*

W & J **SLOANE**

216 SUTTER near GRANT



SAN FRANCISCO 8, CALIFORNIA

SAN FRANCISCO OPERA COMPANY

GAETANO MEROLA

GENERAL DIRECTOR

ARMANDO AGNINI
STAGE AND TECHNICAL DIRECTOR

KURT HERBERT ADLER
CHORUS DIRECTOR

PAUL POSZ
BUSINESS MANAGER

HERBERT GRAF
STAGE DIRECTOR

JESSIE KEENE
SECRETARY

ETIENNE BARONE
STAGE MANAGER

WILLAM CHRISTENSEN
BALLET MASTER



CONDUCTORS and ASSISTANTS

GAETANO MEROLA

WILLIAM STEINBERG

GEORGE SEBASTIAN

PIETRO CIMARA

KARL RIEDEL

OTELLO CERONI

KURT HERBERT ADLER

KARL KRITZ

ANTONIO DELL'OREFICE

NAOUM BLINDER
CONCERT MASTER

JULIUS HAUG
PERSONNEL MANAGER

ARTISTS

LICIA ALBANESE
SOPRANO

EVARISTO ALIBERTINI
BARITONE

LORENZO ALVARY
BASS

BRITTA ANDERSON
CONTRALTO

SALVATORE BACCALONI
BASS

BIANCA BRUNI
SOPRANO

LORRAINE CALCAGNO
CONTRALTO

LEILA CAMBI
SOPRANO

FRANCES CASTELLANI
SOPRANO

GEORGE CEHANOVSKY
BARITONE

NADINE CONNER
SOPRANO

EVELYNN CORVELLO
SOPRANO

VIVIAN DELLA CHIESA
SOPRANO

MURIEL DEMERS
SOPRANO

ALESSIO DE PAOLIS
TENOR

LILY DJANEL
SOPRANO

LEO GALT
BARITONE

JOHN GARRIS
TENOR

HERTA GLAZ
CONTRALTO

CHARLES GOODWIN
BASS

PAUL GUENTER
BARITONE

MACK HARRELL
BARITONE

MARGARET HARSHAW
CONTRALTO

ELMA HEITMAN
SOPRANO

ROSE AGNES HERSCH
CONTRALTO

MARY BELLE JACOBS
SOPRANO

FREDERICK JAGEL
TENOR

HERBERT JANSSEN
BARITONE

RADUL JOBIN
TENOR

MARILYNN KING
SOPRANO

CHARLES KULLMAN
TENOR

BRUND LANDI
TENOR

KATHLEEN LAWLOR
SOPRANO

LOTTE LEHMANN
SOPRANO

PAUL LEIBER
TENOR

MAX LORENZINI
BARITONE

AUGUSTO LOURENZO
BARITONE

ROBERT BRUCE MACKAY
BASS

BENJAMIN MARTIN
BARITONE

LAURITZ MELCHIOR
TENOR

ROBERT MILLS
BARITONE

ROBIN NELSON
BARITONE

HERBERT NYSTROM
TENOR

WALTER OLITZKI
BARITONE

JAN PEECE
TENOR

IVAN PETROFF
BARITONE

EZIO PINZA
BASS

LILY PONS
SOPRANO

HILDE REGGIANI
SOPRANO

ANITA RAGUSA
SOPRANO

STELLA ROMAN
SOPRANO

W. VERNON SANDERS
BASS

BETTIE SANDERSON
SOPRANO

ELEANOR STEBER
SOPRANO

RISE STEVENS
SOPRANO

GEORGE TALLONE
TENOR

JOSEPH TISSIER
TENOR

HELEN TRAUBEL
SOPRANO

CLARAMAE TURNER
CONTRALTO

FRANCESCO VALENTINO
BARITONE

THELMA VOTIPKA
SOPRANO

FREDERIC WILLIAMS
TENOR

The World's Greatest Artists

are on

VICTOR RECORDS



You can have command performances of Grand Opera in your home, through the medium of Victor Records. You will find the world's greatest artists in Victor's great Catalog of Music.

THE MUSIC AMERICA LOVES BEST!



CONSULT THESE VICTOR DEALERS FOR
YOUR VICTOR RECORD REQUIREMENTS

CITY OF PARIS

Douglas 4500
Paul Verdier, Pres.
Radios - Records
Normandy Lane

**MUSIC
CENTER**

*San Francisco's
Newest Record Shop*
40 POWELL STREET
Open Evenings till 9 p.m.

**THE
WHITE HOUSE**

Raphael Weill &
Company
Radio-Record Shop
Fourth Floor

**THE
EMPORIUM**

*San Francisco's
Shopping Center*
835 MARKET STREET

**O'CONNOR
MOFFATT
and Company**
*Stockton at O'Farrell
SUTTER 1800*

**THE
RECORD SHOP**

14 Tillman Place
San Francisco 8, California
Off Grant Ave. bet. Post
and Sutter
Phone EXbrook 2383
*"The Best in Recorded
Music"*

C H O R A L E N S E M B L E

MISSES

BRITTA ANDERSON
LUCY ARMAGANIAN
VIOLET AURAND
EILEEN BROWNE
BIANCA BRUNI
LORRAINE CALCAGNO
LELIA CAMBI
ELIZABETH CASE
GRACE COLTRONE
ELEANOR CORYELL
MURIEL DEMERS
SONYA FREED
BARBARA FRITZ
EMILY GRIGSBY
THORA HARPER

ELMA HEITMAN
ROSE AGNES HERSCH
ORTHELLA HUGHES
MARY BELLE JACOBS
RHEA KESSLER
MARILYNN KING
LUCILE KIRTLEY
SYBIL LOUISE KNAPP
KATHLEEN LAWLOR
NEVART LEVON
DOROTHY MCINTYRE
DELPHIA PHILLIPS
BETTIE SANDERSON
VERA SOLAX

DORA DI TANO, ACCOMPANIST

MESSRS.

EVARISTO ALIBERTINI
ALBERT BARRETT
HARRY BATHGATE
FRED BEARDSLEY
ALTON BERNHARD
LOUIS BRAUNSTEIN
JOHN CRONIN
GALLIAND DANELUZ
FLOYD DAVIS
LORENZO DE BEAL
AMERIGO DEL GRANDE
ARTHUR DE MASI
PHIL DOAN
LEO GALT
WILLIAM GORMAN
PAUL GUENTER
E. ERICH LAWRENCE
PAUL LEIBER

MAX LORENZINI
AUGUSTO LOURENZO
ROBERT BRUCE MACKAY
GIULIO MANCINI
BENJAMIN MARTIN
CARLO MENNUCCI
ROBIN NELSON
WILLIAM PETERSEN
WILLIAM PETERSEN
W. VERNON SANDERS
BRUCE LINWOOD
STEWART
GEORGE TALLONE
ALBERTO VANNUCCI
EDWIN VANNUCCI
FRED WAHLIN
FREDERIC WILLIAMS
HERMAN WISEMAN

BALLET

RUBY ASQUITH, PRIMA BALLERINA

WILLAM CHRISTENSEN, CHOREOGRAPHER AND BALLET MASTER

SOLOISTS

MISSES

CELENA CUMMINGS
ROSALIE PROSCH
SALAND

MISSES

LOIS TREADWELL
JOCELYN VOLLMAR
ONNA WHITE

PRINCIPAL DANCERS

MISSES

BARBARA BADERTSCHER
BETTY CUNEO
MARCELLA DODGE
ANTOINETTE GUHLKE
JYMMI RIEDEL
SALLY WHALEN
WANA WILLIAMS

MESSRS.

ROBERT HANSEN
RUSSELL HARTLEY
FRANK NELSON
RALPH PATTERSON
JOAQUIN FELSCH
ROBERT THORSON

CORPS DE BALLET

MISSES

BENEVIEVE ASDONOVICH
BONNY BELL
JANE BOWEN
VERA GOLD

MISSES

AUDREY GREENLEY
NANCY JACOBS
NANCY JOHNSON

MISSES

IRENE MANSFELDT
JUDY NATHANSON
MARCIANNE RAUB

MISSES

JANET SASSOON
JOAN VICKERS
CAROLINE WILLIAMS
SYLVIA WILLIAMS

PRODUCTION

EUGENE B. DUNKEL-FRITZ KRAENKE
SCENIC ARTISTS

EARL MCGUIRE
MASTER CARPENTER

CHARLES J. HOLZMUELLER
MASTER ELECTRICIAN

JOHN T. HEAVEY
MASTER OF PROPERTIES

FOR WAR MEMORIAL OPERA HOUSE

S. E. SIMMONS
MASTER CARPENTER

EDWARD J. ZETTEL
MASTER ELECTRICIAN

CLAUDE L. WAGGONER
MASTER OF PROPERTIES

COSTUMES AND WIGS BY GOLDSTEIN & CO.

ALEXANDER AGNINI
WARDROBE MASTER

INEZ DODSON
WARDROBE MISTRESS

SUE MCGOWAN
HAIRDRESSER

EVERETT MASON
MAKEUP ARTIST

PROGRAM

PISANI PRINTING & PUBLISHING COMPANY, PUBLISHERS, DESIGNERS AND PRINTERS



LILY PONS

LAURITZ MELCHIOR

LICIA ALBANESE

RAOUL JOBIN

HELEN TRAUBEL

CHARLES KULLMAN

STELLA ROMAN

EZIO PINZA

RISE STEVENS

LORENZO ALVARY

VIVIAN DELLA CHIESA

Artists of the San Francisco OPERA COMPANY



Beaulieu Vineyard

BV

WINES



BEAULIEU VINEYARD is a family estate . . . located in the lovely Napa Valley of Northern California. Today, as for nearly half a century, we take pride in the quality of our wines. Our 600 acres of vines grow wine grapes of the finest strains. Thus the yield is far lighter than that of grapes of lesser quality.

Our old-world-type of winery has a storage capacity equal to five times our yearly production — thus we have ample facilities to develop our inventory of fine wines in small cooperage until bottle-ripe, and to bin them afterwards.

As a consequence of our painstaking methods, production is limited and our wines are not available everywhere.

FIVE REPRESENTATIVE BEAULIEU VINEYARD WINES

GEORGES DE LATOUR PRIVATE RESERVE CABERNET: An eminent wine, made solely with Cabernet Sauvignon grapes.

BEAULIEU NAPA VALLEY MUSCAT DE FRONTIGNAN: This wine has been acclaimed by experts as the finest dessert wine produced in America. A wine for entertaining.

BEAUMONT: Made with the famous Pinot Noir grapes (original cuttings from Cote d'Or district of France).

BEAUCLAIR: One of the fine white wines of the Napa Valley. Made with Johannesberger Riesling grapes.

BEAUROSÉ. A light, agreeable vinrosé. To be served very chilled. The hostess wine for lunch.

Beaulieu Vineyard

FOUNDED AND OWNED CONTINUOUSLY BY THE DE LATOUR FAMILY SINCE 1900
Vineyards and Winery at Rutherford, Napa County, California



FREDERICK JAGEL

LILY DJANEL

JAN PEERCE

HERTA GLAZ

FRANCESCO VALENTINO

MARGARET HARSHAW

SALVATORE BACCALONI

LOTTE LEHMANN

IVAN PETROFF

ELEANOR STEBER

MACK HARRELL

Artists of the San Francisco OPERA COMPANY



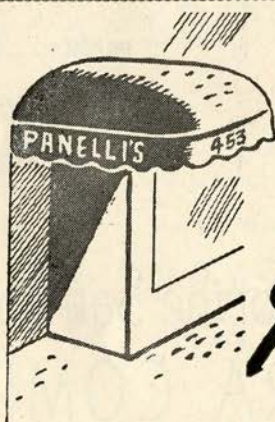


Simi Vineyard

FINE CALIFORNIA WINES

When entertaining, serve superb SIMI vintage table wines . . . Burgundy, Cabernet, Carignan, Zinfandel, and Larose, Sauterne, Chablis . . . matured with unhurried care from choicest Sonoma hillside grapes . . . ask for SIMI . . . pronounced See-Me . . . at your dealer's.

PARROTT & CO. . . San Francisco . . Sole U. S. Distributors



The New

Panelli's

. . . a distinctive Restaurant glorifying delicious Italian Cuisine, featuring the Charcoal Broiler
Cocktails

453 PINE STREET SUTTER 9937
SAN FRANCISCO, CALIFORNIA



HILDE REGGIANI

HERBERT JANSSEN

NADINE CONNER

BRUNO LANDI

THELMA VOTIPKA

GEORGE CEHANOVSKY

ANITA RAGUSA

ALESSIO DE PAOLIS

FRANCES CASTELLANI

WALTER OLITZKI

JOHN GARRIS

Artists of the San Francisco OPERA COMPANY



MUNICIPAL CONCERTS

1946
THE ART COMMISSION
Presents

SAN FRANCISCO
SYMPHONY ORCHESTRA

JANUARY 11



ARTUR RUBINSTEIN
THE MASTER PIANIST
PIERRE MONTEUX, CONDUCTING

JANUARY 24

TO

FEBRUARY 3



RUSSIAN BALLET
BALLET THEATRE
10 SPECTACULAR PERFORMANCES
ALL WITH SAN FRANCISCO SYMPHONY

FEBRUARY 13



LEONARD BERNSTEIN
GUEST CONDUCTOR
JESUS MARIA SANROMA, PIANIST

FEBRUARY 28



LICIA ALBANESE
PRIMA DONNA, SAN FRANCISCO AND MET. OPERA CO.
ALL OPERA PROGRAM
GAETANO MEROLA, CONDUCTING

APRIL 6



JOSEPH SZIGETI
THE INCOMPARABLE VIOLINIST
PIERRE MONTEUX, CONDUCTING

MUSIC
MAINTAINS
MORALE
MUSIC
MUST
GO
ON!

FIVE STAR SEASON

Season Reservations Now!

★SIX EVENTS including opening night of Ballet Theatre and choice of any one other Ballet performance, also the four guest artist concerts. \$11.40, \$8.40, \$6.90, \$4.80, \$3.60, tax incl. BOX OFFICE, Sherman, Clay, SU 1331



ACME
..the beer with the
high I.Q. (It Quenches!)

ACME BREWERIES • San Francisco, Los Angeles



R E P E R T O I R E

REGULAR SERIES

- CARMEN (*Bizet*) *Tuesday Night, September 25, at 8:00*
 With Stevens, Steber, Votipka, Turner, Jobin, Harrell, Olitzki, De Paolis, Cehanovsky.
 MEROLA, Conductor
- LA BOHEME (*Puccini*) *Friday Night, September 28, at 8:15*
 With Albanese, Conner, Kullman, Valentino, Pinza, Cehanovsky, Baccaloni, Alibertini,
 Lorenzini, Messina. MEROLA, Conductor
- DER ROSENKAVALIER (*Richard Strauss*) *Tuesday Night, October 2, at 8:00*
 With Lehmann, Stevens, Steber, Glaz, Votipka, Alvary, Landi, Olitzki, De Paolis,
 Harrell, Garris, King, Cambi, Lawlor, Hersch, Sanderson, Tallone, Tissier, Goodwin,
 Leiber, Guenter, MacKay, Williams. SEBASTIAN, Conductor
- TRISTAN UND ISOLDE (*Wagner*) *Friday Night, October 5, at 8:00*
 With Traubel, Glaz, Melchior, Janssen, Alvary, Olitzki, Garris, Goodwin.
 STEINBERG, Conductor
- DIE WALKURE (*Wagner*) *Tuesday Night, October 9, at 8:00*
 With Traubel, Djanel, Harshaw, Melchior, Janssen, Alvary, Votipka, Glaz, Ragusa,
 Demers, Anderson, Turner, Calcagno. STEINBERG, Conductor
- BORIS GODOUNOFF (*Moussorgsky*) *Friday Night, October 12, at 8:00*
 With Pinza, Baccaloni, Jagel, Alvary, De Paolis, Cehanovsky, Garris, Della Chiesa,
 Harshaw, Glaz, Castellani, Turner, Mills, Nystrom, Tissier, Goodwin, Bruni, Calcagno,
 Leiber, Martin, Lourenzo. SEBASTIAN, Conductor
- DON GIOVANNI (*Mozart*) *Tuesday Night, October 16, at 8:00*
 With Pinza, Baccaloni, Landi, Alvary, Mills, Roman, Della Chiesa, Albanese.
 STEINBERG, Conductor
- LUCIA DI LAMMERMOOR (*Donizetti*) *Friday Night, October 19, at 8:15*
 With Pons, Votipka, Peerce, Alvary, Petroff, Garris, Nystrom. CIMARA, Conductor
- L'HEURE ESPAGNOLE (*Ravel*) *Tuesday Night, October 23, at 8:00*
 With Albanese, Harrell, Baccaloni, De Paolis, Garris. MEROLA, Conductor
followed by
- SALOME (*Richard Strauss*)
 With Djanel, Harshaw, Glaz, Jagel, Janssen, Garris, Alvary, Cehanovsky, De Paolis,
 Heitman, Nelson, Mills, Tallone, Nystrom, Tissier, Goodwin, Sanders, Galt.
 SEBASTIAN, Conductor
- RIGOLETTO (*Verdi*) *Friday Night, October 26, at 8:15*
 With Pons, Glaz, Petroff, Peerce, Alvary, De Paolis, Cehanovsky, Calcagno, Ragusa,
 Lawlor, Nelson, Mills. CIMARA, Conductor

POPULAR SERIES

- LES CONTES D'HOFFMANN (*Offenbach*) *Thursday Night, October 4, at 8:15*
 With Albanese, Djanel, Glaz, Corvello, Turner, Jobin, Pinza, Valentino, Olitzki,
 De Paolis, Alvary, Garris, Tissier, Mills, Sanders. MEROLA, Conductor
- CARMEN (*Bizet*) *Thursday Night, October 11, at 8:00*
 With same cast as Regular Series performance.
- DER ROSENKAVALIER (*Richard Strauss*) *Thursday Night, October 18, at 8:00*
 With same cast as Regular Series performance.
- BORIS GODOUNOFF (*Moussorgsky*) *Monday Night, October 22, at 8:00*
 With same cast as Regular Series performance.
- DON GIOVANNI (*Mozart*) *Thursday Night, October 25, at 8:00*
 With same cast as Regular Series performance except Eleanor Steber will sing Donna Elvira
 and Nadine Conner will sing Zerlina.

EXTRA PERFORMANCES

- LA TRAVIATA (*Verdi*) *Sunday Matinee, September 30, at 2:15*
 With Albanese, Ragusa, Lawlor, Kullman, Valentino, De Paolis, Cehanovsky, Olitzki,
 Goodwin. MEROLA, Conductor
- CAVALLERIA RUSTICANA (*Mascagni*) *Sunday Matinee, October 7, at 2:15*
 With Della Chiesa, Glaz, Votipka, Kullman, Petroff.
followed by
- I PAGLIACCI (*Leoncavallo*)
 With Albanese, Jobin, Valentino, Harrell, De Paolis, Tallone, Sanders.
 ADLER, Conductor
- TRISTAN UND ISOLDE (*Wagner*) *Sunday Matinee, October 14, at 2:00*
 With same cast as Regular Series performance except Margaret Harshaw will sing Brangane.
- LA TRAVIATA (*Verdi*) *Wednesday Night, October 17, at 8:15*
 With same cast as Regular Series performance.
- BARBER OF SEVILLE (*Rossini*) *Sunday Matinee, October 21, at 2:00*
 With Reggiani, Turner, Landi, Valentino, Baccaloni, Pinza, De Paolis.
 CIMARA, Conductor
- LA BOHEME (*Puccini*) *Wednesday Night, October 24, at 8:15*
 With same cast as Regular Series performance except Vivian Della Chiesa will sing Mimi.
- AIDA (*Verdi*) *Saturday Night, October 27, at 8:00*
 With Roman, Harshaw, Jagel, Petroff, Pinza, Alvary, De Paolis, Votipka.
 MEROLA, Conductor

For the finest music in radio . . .

Keep tuned to

KPO

★ **680** on your dial

John Charles Thomas
Sun. at 11:30 a.m.



Contented Hour
Mon. at 7:00 p.m.

General Motors Symphony
Sun. at 2:00 p.m.



Telephone Hour
Mon. at 9:00 p.m.

Album of Familiar Music
Sun. at 6:30 p.m.



Light and Mellow
Tues. at 9:30 p.m.

Hour of Charm
Sun. at 7:00 p.m.



Standard School Broadcast
Thurs. at 10:00 a.m.
(starting Oct. 18)

Standard Hour
Sun. at 8:30 p.m.



Waltz Time
Fri. at 6:00 p.m.

Voice of Firestone
Mon. at 5:30 p.m.



Know Your Symphony
Sat. at 5:00 p.m.



Part of a continuous Parade of Stars
heard over KPO and the
NATIONAL BROADCASTING COMPANY
America's Number One Network

THE SAN FRANCISCO OPERA ASSOCIATION

Presents

SAN FRANCISCO'S GREATEST DANCE FESTIVAL

An Unprecedented Ballet Revue

Old Classical

Modern

New Classical

THE ONE AND ONLY

Ballet Russe de Monte Carlo

Two Weeks — Fifteen Gala Performances

Repertoire

Evenings at 8:30

- Tues. Eve., Nov. 13**
BALLET IMPERIAL
*COMEDIA BALLETTICA
L'APRES MIDI D'UN FAUNE
LE BEAU DANUBE
- Wed. Eve., Nov. 14**
LE BOURGEOIS GENTILHOMME
*MOZARTIANA
SCHEHERAZADE
- Thurs. Eve., Nov. 15**
THE SNOW MAIDEN
*CONCERTO BAROCCO
DIVERTISSEMENTS FROM COPPELIA
- Fri. Eve., Nov. 16**
BALLET IMPERIAL
*FRANKIE AND JOHNNY
GRAND ADAGIO
LE BEAU DANUBE
- Sat. Eve., Nov. 17**
CONCERTO BAROCCO
DANSES CONCERTANTES
COMEDIA BALLETTICA
RODEO
- Sun. Mat., Nov. 18**
LES SYLPHIDES
LE BOURGEOIS GENTILHOMME
GRAND ADAGIO
RODEO
- Sun. Eve., Nov. 18**
MOZARTIANA
FRANKIE AND JOHNNY
L'APRES MIDI D'UN FAUNE
LE BOURGEOIS GENTILHOMME

Matinees at 2:30

- Mon. Eve., Nov. 19**
THE SNOW MAIDEN
MOZARTIANA
L'APRES MIDI D'UN FAUNE
SCHEHERAZADE
- Tues. Eve., Nov. 20**
CHOPIN CONCERTO
DANSES CONCERTANTES
COMEDIA BALLETTICA
RODEO
- Wed. Eve., Nov. 21**
CONCERTO BAROCCO
L'APRES MIDI D'UN FAUNE
THE NUTCRACKER
- Thurs. Eve., Nov. 22**
MOZARTIANA
FRANKIE AND JOHNNY
DIVERTISSEMENTS FROM COPPELIA
- Fri. Eve., Nov. 23**
LES SYLPHIDES
DANSES CONCERTANTES
PAS DE DEUX CLASSIQUE
SCHEHERAZADE
- Sat. Mat., Nov. 24**
LES SYLPHIDES
CONCERTO BAROCCO
COPPELIA
- Sun. Mat., Nov. 25**
THE SNOW MAIDEN
COMEDIA BALLETTICA
THE NUTCRACKER
- Sun. Eve., Nov. 25**
CONCERTO BAROCCO
COMEDIA BALLETTICA
MOZARTIANA
LE BEAU DANUBE

* San Francisco debut

ALEXANDRA DANILOVA
NATHALIE KRASSOVSKA
RUTHANNA BORIS
MARIA TALLCHIEF
DOROTHY ETHERIDGE
GERTRUDE SVOBODINA

PAULINE GODDARD
YVONNE CHOUTEAU
MARIE-JEANNE
FREDERIC FRANKLIN
LEON DANIELIAN
NICOLAS MAGALLANES

MICHEL KATCHAROFF
NIKITA TALIN
HERBERT BLISS
PETER DEIGN
ROBERT LINDGREN
STANLEY ZOMPAKOS

Brilliant Corps de Ballet · Symphony Orchestra · Company of 125



Tickets: \$3.00, \$2.40, \$1.80, \$1.20, Tax Incl. Opera Box Office, City of Paris, EX 8585
WAR MEMORIAL OPERA HOUSE



Carmen Cavallaro

AND HIS FAMOUS ORCHESTRA
OPENS TUESDAY, OCTOBER 2ND

hotel

MARK HOPKINS

GEO. D. SMITH • GENERAL MANAGER

MONROE- ANDREW

A DISTINCTIVE MEN'S SHOP

British Woolens • Gentlemen's Furnishings

Hats—Sportswear

Custom Tailors

386 POST STREET

THE CONCERT DIVISION OF THE
SAN FRANCISCO OPERA ASSOCIATION

GAETANO MEROLA, *General Director*

PAUL POSZ, *Business Manager*

SEASON 1945-1946

A New High in Concert Values

TWO OPERAS — PLUS

Tuesday, Nov. 13
BALLET RUSSE
DE MONTE CARLO

Thursday, Jan. 3

TRAUBEL

Sunday, Jan. 6

HEIFETZ

Friday, Jan. 18
ROSARIO and ANTONIO

Monday, Jan. 21

SCHNABEL

Monday, Feb. 11

BJOERLING

Tuesday, Feb. 26

SERKIN

Tuesday, Mar. 5
ROBESON

Monday, Mar. 18

TOUREL

Tuesday, Mar. 26

MENUHIN

TICKET PRICES

Orchestra and Boxes, \$3.00; Dress Circle, \$1.80 Tax Included

Other Sections Sold Out

Opera Box Office — City of Paris — Ex 8585

WAR MEMORIAL OPERA HOUSE

4 VICTOR ALBUMS YOU SHOULD OWN

ENRICO CARUSO: Metropolitan Revivals from Lucia, Masked Ball, Rigoletto, La Boheme, Martha, I Lombardi, Faust, Samson et Delilah.

BORIS GODOUNOFF (abridged) Featuring Alexander Kipnis. All in Russian, complete on five 12-inch records.

SCENES FROM WAGNER OPERAS: Lauritz Melchior, singing arias from Siegfried, Tristan und Isolde, Lohengrin, Tannhauser, Der Fliegende Hollander.

DER ROSENKAVALIER: arranged as a symphonic suite; recorded by the Cincinnati Symphony Orchestra.

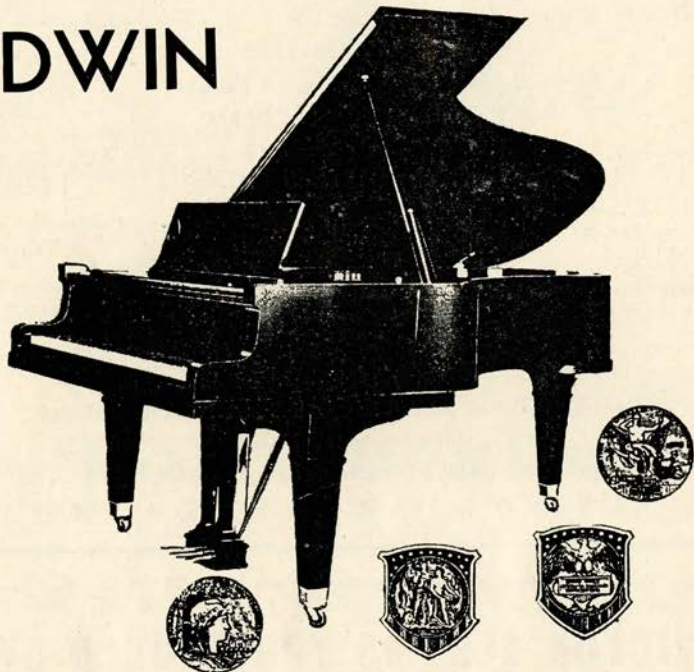
For opera albums or single records, we invite you to visit the Classics Room on our Record Balcony.

SCHWABACHER-FREY

MARKET OPPOSITE GRANT

THE OFFICIAL PIANO *of the*
SAN FRANCISCO OPERA COMPANY

BALDWIN



Choose your Piano as the Artists Do



Lily Pons

Ezio Pinza

Helen Traubel

THE BALDWIN PIANO CO.

310 SUTTER STREET, SAN FRANCISCO
1828 WEBSTER STREET, OAKLAND

San Francisco Symphony Orchestra

Pierre Monteux, Conductor

LEONORA WOOD ARMSBY, *President and Managing Director*

HOWARD K. SKINNER, *Business Manager*



SCHAPIRO
ANDERSON

STERN

MALCUZYNSKI
SCHNABEL

FLEISHER
MONTEUX

URY
HOROWITZ

KANDER
LEVANT
STRAVINSKY

Twelve Friday Afternoons

Promptly at 2:30 o'clock

- NOV. 23 OPENING CONCERT
 NOV. 30 VLADIMIR HOROWITZ, *Pianist*
 DEC. 7 ORCHESTRAL PROGRAM
 DEC. 14 GERHARD KANDER, *Violinist*
 DEC. 21 LEON FLEISHER, *Pianist*
 JAN. 4 MAXIM SCHAPIRO, *Pianist*
 JAN. 18 ARTUR SCHNABEL, *Pianist*
 FEB. 8 ISAAC STERN, *Violinist*
 MAR. 15 WITOLD MALCUZYNSKI, *Pianist*
 MAR. 22 IGOR STRAVINSKY, *Conductor*
 MAR. 29 TANYA URY, *Pianist*
 APR. 12 CLOSING CONCERT

Three Thursday Evenings

Promptly at 8:30 o'clock

- JAN. 17 ARTHUR SCHNABEL, *Pianist*
 FEB. 21 MARIAN ANDERSON, *Contralto*
 MAR. 7 OSCAR LEVANT, *Pianist*

Fourteen Saturday Evenings

Promptly at 8:30 o'clock

- NOV. 24 OPENING CONCERT
 DEC. 1 VLADIMIR HOROWITZ, *Pianist*
 DEC. 8 ORCHESTRAL PROGRAM
 DEC. 15 GERHARD KANDER, *Violinist*
 DEC. 22 LEON FLEISHER, *Pianist*
 JAN. 5 MAXIM SCHAPIRO, *Pianist*
 JAN. 19 ARTUR SCHNABEL, *Pianist*
 FEB. 9 ISAAC STERN, *Violinist*
 FEB. 23 MARIAN ANDERSON, *Contralto*
 MAR. 9 OSCAR LEVANT, *Pianist*
 MAR. 16 WITOLD MALCUZYNSKI, *Pianist*
 MAR. 23 IGOR STRAVINSKY, *Conductor*
 MAR. 30 TANYA URY, *Pianist*
 APR. 13 CLOSING CONCERT

Season Tickets Now On Sale

Sherman, Clay & Co., Kearny and Sutter Sts., San Francisco, Zone 8. SUTTER 1331

WAR MEMORIAL OPERA HOUSE

NOVEMBER 23, 1945 • APRIL 13, 1946



Nicholas Johnston

MASTER PHOTOGRAPHER

SAN FRANCISCO

427 POST ST. HOTEL ST. FRANCIS

YUKON 2061

SUNDAY MATINEE, OCTOBER 7, at 2:15

Cavalleria Rusticana

Opera in one act. Music by Pietro Mascagni.

Text by G. Targioni-Tozzetti and G. Menasci, adapted from a story by G. Verga.

THE CAST

Santuzza, a village girl.....VIVIAN DELLA CHIESA
Lola, wife of Alfio.....HERTA GLAZ
Turiddu, a young soldier.....CHARLES KULLMAN
Alfio, a teamster.....IVAN PETROFF
Lucia, mother of Turiddu.....THELMA VOTIPKA

Peasants and Villagers.

TIME AND PLACE: The Present; Square in a Sicilian Village

I Pagliacci

Opera in two acts. Music and Libretto by Ruggiero Leoncavallo.

THE CAST

Canio (in the play "Punchinello"),
master of the troupe.....RAOUL JOBIN
Nedda (in the play "Columbine"), his wife.....LICIA ALBANESE
Tonio (in the play "Taddeo"), the clown.....FRANCESCO VALENTINO
Beppe (in the play "Harlequin").....ALESSIO DE PAOLIS
Silvio, a Villager.....MACK HARRELL
First Villager.....GEORGE TALLONE
Second Villager.....W. VERNON SANDERS

Peasants and Villagers.

CONDUCTOR

KURT HERBERT ADLER

STAGE DIRECTOR

ARMANDO AGNINI

TIME AND PLACE: Feast of Assumption at Calabria, near Montalto

Act I: Afternoon

Act II: Evening

TICKETS FOR EXTRA PERFORMANCES
AT OPERA BOX OFFICE, CITY OF PARIS

Encores not permitted — Bell rings three minutes before curtain rises

The Story of "Cavalleria Rusticana"

Turiddu is heard singing the charms of Lola. Santuzza, discarded by Turiddu for Lola, seeks Lucia, mother of Turiddu, to whom she confides her betrayal. Lucia enters the church and Santuzza awaits Turiddu. He spurns her and departs with Lola. Santuzza reveals the unfaithfulness of Lola to Alfio, who vows to kill Turiddu. The villagers emerge from the church. Turiddu is challenged to a duel by Alfio. He bids farewell to his mother and follows Alfio. After a pause, a peasant rushes in with the cry "Turiddu is dead."



The Story of "I Pagliacci"

ACT I

Tonio appears before the curtain in a prologue telling of the performance to come as an actual occurrence. The curtain reveals the townspeople gathered to greet the arrival of the strolling players. The actors parade and Tonio is sharply reproved by Canio, chief of the troupe, for familiarity toward Nedda, Canio's wife. Players and peasants depart for an adjoining inn, leaving Tonio and Nedda after Canio warned that he will avenge any insult involving Nedda's affections. Nedda, who loves another, trembles at his words and sings to conceal her fears. Nedda repulses the advances of Tonio with a whip and he departs, vowing vengeance. Silvio, Nedda's lover, induces her to agree to flight with him. Tonio, overhearing, summons Canio but Silvio escapes unrecognized. Canio demands from Nedda the name of her lover but to no avail. Tonio whispers to Canio that the unknown will surely attend the performance and betray himself.

ACT II

The comedy is about to begin and Nedda as Columbine, collecting money from the crowd, warns Silvio, who is present. Canio, distracted, stumbles through the lines of the play, again demanding from Nedda the name of her lover. She refuses, trying to put him off lightly as in the play. Canio, now beside himself with jealous rage, seizes a knife from the table and stabs Nedda to the heart. Silvio attempts to come to her aid and he, too, is slain by Canio. As the crowd stands horrified, Canio brings the play and the opera to a close with "The comedy is ended."



LADIES
PLEASE
REMOVE
YOUR
HATS

BEE & RAY
GOMAN'S
GAY 90'S
555 PACIFIC AVE
"ON THE OLD
BARBARY COAST"
CONTINUOUS
"NAUGHTY
NINETIES"
ENTERTAINMENT

"Original Gibson Girl" drawn by Charles Dana Gibson—1904, for Collier's Weekly.



DIFFERENT SKINS

NEED DIFFERENT FOUNDATIONS

That is why Monteil created *Beauty Balm* and *Sensitone Lotion*—the one for dry or normal skins, the other for those who like a lighter foundation.

Either will keep you beautifully powdered without that powdery look, diffusing your rouge into subtle colors echoes of your own complexion. *Beauty Balm* in white, bronzé and muted rose. *Sensitone Lotion* in natural, sun tan and muted rose.



Germaine Monteil

TUESDAY NIGHT, OCTOBER 9, at 8:00

Die Walkure

Opera in three acts. Music and text (in German) by Richard Wagner.

THE CAST

Brunnhilde	HELEN TRAUBEL
Sieglinde	LILY DJANEL
Fricka	MARGARET HARSHAW
Siegmund	LAURITZ MELCHIOR
Wotan	HERBERT JANSSEN
Hunding	LORENZO ALVARY
Helmwige	ANITA RAGUSA
Gerhilde	THELMA VOTIPKA
Ortlinde	*MURIEL DEMERS
Siegrune	HERTA GLAZ
Rossweisse	*BRITTA ANDERSON
Waltraute	LORRAINE CALCAGNO
Grimgerde	CLARAMAE TURNER
Schwertleite	MARGARET HARSHAW

** San Francisco Opera debut*

CONDUCTOR

WILLIAM STEINBERG

STAGE DIRECTOR

HERBERT GRAF

TIME AND PLACE: *Legendary*

Act I: Interior of Hunding's Hut in the Forest

Act II: A Wild and Rocky Pass

Act III: Rock of the Valkyries

TICKETS FOR EXTRA PERFORMANCES
AT OPERA BOX OFFICE, CITY OF PARIS

Encores not permitted — Bell rings three minutes before curtain rises

The Story of "Die Walkure"

NOTE: "Die Walkure" is the second of Wagner's "Der Ring des Nibelungen." In "Das Rheingold," prelude to the cycle, the Nibelunger Alberich steals the power-endowing ring forged from the Rheingold. Wotan, in turn, wrests it from Alberich but delivers it to the giant Fafner. Wotan has begotten nine immortal Valkyries who lead fallen heroes to Valhalla to fight the hordes of Alberich. He also begets the twins, Siegmund and Sieglinde, in union with an earth woman. It is their story that forms the subject of "Die Walkure."

ACT I

Siegmund, driven into Hunding's hut by a terrible storm, is confronted by Sieglinde, Hunding's wife. Hunding, returning, observes the likeness between the two, and learns that Siegmund is the son of Walse, his mortal enemy. Sieglinde, who has conceived a passionate love for Siegmund, pours a sleeping potion in Hunding's goblet. She tells Siegmund her story of abduction and forced marriage to Hunding and of the sword, visible where it has been plunged into an ash tree by a one-eyed warrior and destined for him with strength to pull it forth. Comparing stories they find themselves to be brother and sister as well as lovers. Both are children of Walse who had plunged the sword, Nothung, into the tree for their deliverance. Siegmund tears the sword from its ashen sheath and clasping Sieglinde in his arms, carries her passionately away.

ACT II

Wotan, who has decreed death for Hunding, so instructs Brunnhilde. But Fricka, his wife and guardian of the marriage vow, in a stormy scene avows that punishment should be visited upon Siegmund and Sieglinde guilty of adultery, and compels him to swear he will not protect his son. Wotan then commands Brunnhilde to protect Hunding and lead Siegmund to Valhalla. Brunnhilde vainly pleads Siegmund's cause. Siegmund and Sieglinde arrive fleeing from Hunding's vengeance. While Siegmund stands guard over the exhausted Sieglinde, Brunnhilde appears and, moved by his devotion, promises him victory despite Wotan's command. Hunding is heard approaching and Siegmund rushes to meet his attack. Wotan appears and with a stroke breaks his sword to splinters. Hunding thrusts Siegmund through the breast and in turn is killed by a scornful wave of Wotan's hand.

ACT III

Brunnhilde implores aid for Sieglinde from the assembling Valkyries. But fearing the wrath of Wotan none dare offer it. Brunnhilde, giving Sieglinde the fragments of Siegmund's sword, bids her seek refuge in the forest wherein Fafner guards the ring there to await the birth of her expected child who shall be named Siegfried and conquer all. The outraged Wotan appears and sorrowfully announces his punishment of the disobeying Brunnhilde. Divested of her divinity she shall sleep on the mountain to become the bride of the first man who finds her. But he will build about her a magic circle of fire so that none but a hero may awaken her.

Business eyes turn West—and widen!

Congestions of war, imposed upon our Western economy, serve usefully to "discover" the basic resources of the West, the capacity of the West to produce and manufacture, and the nearness of our Pacific Coast to the huge postwar markets surrounding the world's biggest waterway.

These facts, known here, now are being regarded with quickening appreciation elsewhere. Colored pins are being shifted west on boardroom wall maps in many a home office.

This Bank, for over eighty years associated with the sensible development of our Pacific Coast, offers two advantages to business and industry. First, our long-established offices in all three Pacific Coast states afford on-the-ground service fitted to each area. Second, our Foreign Exchange department is thoroughly familiar with market contacts throughout the Pacific Basin. For business with or on the Coast or through our ports into the Pacific, the established contacts and long experience of this Bank can be of definite value.

*Head Office: 400 CALIFORNIA STREET
Mission Branch: 16TH & JULIAN AVENUE*

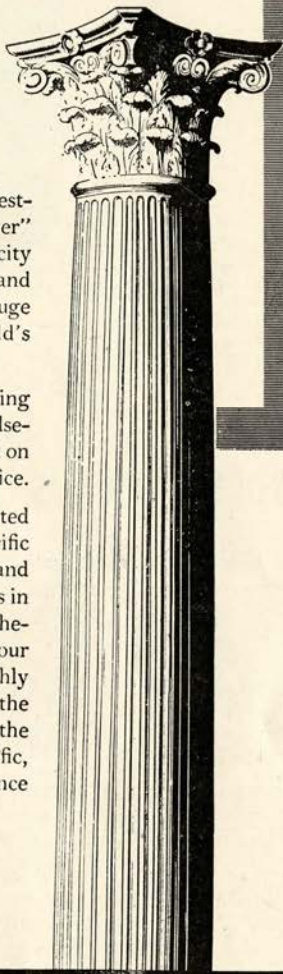
THE BANK OF CALIFORNIA

NATIONAL ASSOCIATION

Founded in 1864

Member Federal Deposit Insurance Corporation

SAN FRANCISCO • PORTLAND • SEATTLE • TACOMA





It Stands Alone

KORBEL BRUT IS **TOPS** IN AMERICAN CHAMPAGNE

Magazines which reach the most sophisticated audience in the United States unanimously give first place in American Champagnes to KORBEL BRUT
WE didn't say it first! THEY DID!

"THE BEST AMERICAN CHAMPAGNE to date is KORBEL BRUT. Our guess is anyone would think it was imported."
—Harper's Bazaar

"PROBABLY THE MOST CHAMPAGNE-LIKE domestic wine is KORBEL BRUT."
—Cue Magazine

"THE OUTSTANDING AMERICAN CHAMPAGNE to date is KORBEL BRUT."
—Town and Country

"EXTREMELY ENJOYABLE, bone-dry and clean-tasting."
—The New Yorker

"AMONG THE FEW FINE CALIFORNIA CHAMPAGNES IS KORBEL BRUT—a special cuvee which has been made as dry as the dryest Champagnes for the English market."
—St. Regis, Peacock Alley, The Ambassador, Plaza En Passant, The Savoyard, The Ritz Carlton, The Hampshire, The Sherry-Netherlands, Pierrot

K O R B E L **BRUT** **ROUGE**
 SEC **PINK**

Distributed by

TRADERS DISTRIBUTING CO.
314 FRONT STREET, SAN FRANCISCO, CALIFORNIA

21 BRANDS, INC.
17 E. 52nd ST., NEW YORK CITY

OPERA BOX HOLDERS

Season 1945

MR. AND MRS. GEORGE WASHINGTON BAKER, JR.
MRS. GEORGE EDWIN BENNETT
MR. AND MRS. CHARLES R. BLYTH
MR. AND MRS. JAMES PARKS BRADLEY
MR. AND MRS. JOHN DAVIS BRADLEY
MR. AND MRS. ROY BRONSON
MR. AND MRS. GEORGE T. CAMERON
MR. AND MRS. JOHN B. CELLA
MR. AND MRS. WILLIAM W. CROCKER
MRS. FRANK P. DEERING
MR. AND MRS. SIDNEY M. EHRMAN
MR. AND MRS. MORTIMER FLEISHHACKER
DR. AND MRS. FRANK R. GIRARD
MR. AND MRS. JOSEPH T. GRACE
MRS. CRESCENT PORTER HALE
MRS. PRENTIS COBB HALE
MR. AND MRS. CHARLES L. HARNEY
MRS. I. W. HELLMAN
MR. AND MRS. CLARENCE LORAN JOHNSTON

MR. AND MRS. ARTHUR DALE KING
MRS. MARCUS S. KOSHLAND
MRS. SAMUEL KNIGHT
MRS. RICHARD MCCREERY
MR. AND MRS. JULLIARD McDONALD
MRS. FELIX MCGINNIS
MR. AND MRS. FREDERICK W. MCNEAR
MR. AND MRS. GAETANO MEROLA
MR. AND MRS. C. O. G. MILLER
MRS. EPPS J. MILLER
MR. AND MRS. KENNETH MONTEAGLE
MRS. RYER NIXON
MRS. ARLINE M. ROLKIN
MRS. HENRY POTTER RUSSELL
SAN FRANCISCO OPERA GUILD
JUDGE AND MRS. M. C. SLOSS
MRS. SIGMUND STERN
MR. AND MRS. NION R. TUCKER
MR. AND MRS. KARL C. WEBER

IMPORTANT

Change in Opera Dates

"DIE WALKURE" will be given Tuesday, Oct. 9,

Instead of Friday, Oct. 12

"BORIS GODOUNOFF" will be given Friday, Oct. 12,

Instead of Tuesday, Oct. 9

Ticket holders will please be guided by the name of the opera
instead of the date.

FERRARI  **NICOLAUS**
AND FORMER FIRM OF **TRAINER & PARSONS**

Dispensing Opticians

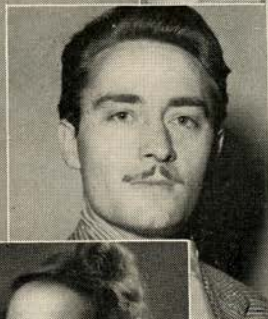
**444 POST
SAN FRANCISCO**

PISANI PRINTING & PUBLISHING CO.

Fine Printing



700 MONTGOMERY STREET • PHONE SUtter 4772
SAN FRANCISCO



CLARAMAE TURNER

ROBERT MILLS

KATHLEEN LAWLOR

CHARLES GOODWIN

EVELYN CORVELLO

GEORGE TALLONE

MURIEL DEMERS

HERBERT NYSTROM

LORRAINE CALCAGNO

ROBIN NELSON

BETTIE SANDERSON

Artists of the San Francisco OPERA COMPANY



Atop Nob Hill

ZEBRA ROOM

COCKTAILS
LUNCH * DINNER

An atmosphere of cultured intimacy where
meals are better and enjoyment is enhanced
by NELLE CALLAHAN at the
Hammond Organ

★

HUNTINGTON HOTEL

NOB HILL

1075 CALIFORNIA

EUGENE N. FRITZ, Managing Owner

COLUMBIA CONCERTS, INC.

Presents

"GREAT NAMES IN MUSIC"

•

Appearing 1945 San Francisco Opera Season

LICIA ALBANESE
LORENZO ALVARY
CHARLES KULLMAN

MARGARET HARSHAW
LILY PONS
RISE STEVENS

•

Appearing San Francisco Opera Concert Series, 1945-1946

HEIFETZ
JUSSI BJOERLING
JENNIE TOUREL
ROSARIO and ANTONIO

RUDOLF SERKIN
YEHUDI MENUHIN
PAUL ROBESON
HELEN TRAUBEL

•

COLUMBIA CONCERTS, Inc., 113 West 57th Street, New York

San Francisco Representative, PAUL POSZ, War Memorial Opera House

Los Angeles Representative, L. E. BEHYMER, 415 Auditorium Building

SAN FRANCISCO TRADITION

BEFORE THE OPERA

...Dine in the exquisite Garden Court

AFTER THE OPERA

...Dance in the Rose Room to the music of

DEL COURTNEY

and his orchestra



The Palace Hotel

EDMOND A. RIEDER, General Manager

FREE

Opera Broadcast Program

☆ The San Francisco Opera Company's 23rd Annual Season is being broadcast over radio station KFRC.

To better enjoy the operas you are unable to attend, Safeway has prepared a 52-page souvenir broadcast program.

For your free Opera Program write Post Office Box 2189, San Francisco 26, California.



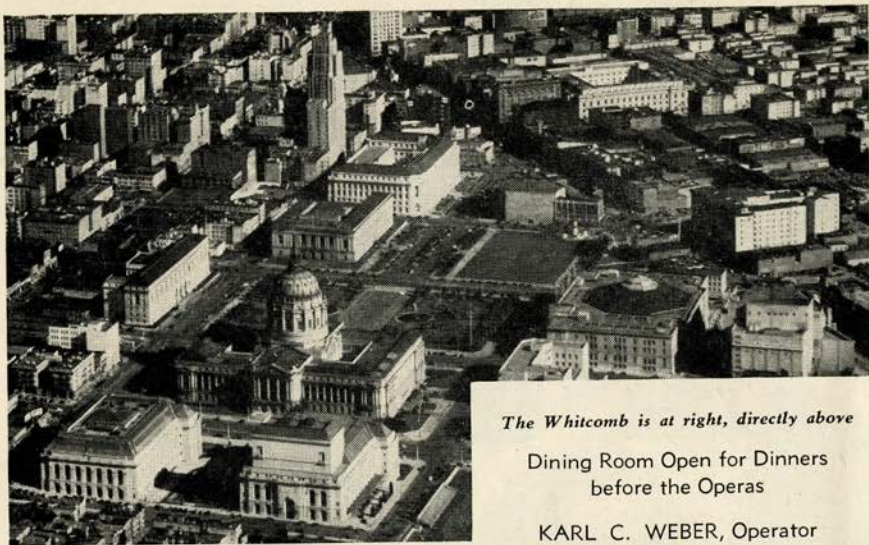
JOSEPH TISSIER
 ROSE AGNES HERSCH
 EVARISTO ALIBERTINI
 PAUL GUENTER

ELMA HEITMAN
 MARILYNN KING
 BIANCA BRUNI
 FREDERIC WILLIAMS

BETTIE SANDERSON
 AUGUSTO LORENZO
 BENJAMIN MARTIN
 ROBERT BRUCE MACKAY

LEO GALT
 MAX LORENZINI
 W. VERNON SANDERS
 PAUL LEIBER

Artists of the San Francisco OPERA COMPANY



The Whitcomb is at right, directly above

Dining Room Open for Dinners
before the Operas

KARL C. WEBER, Operator

SAN FRANCISCO'S LEADING HOTEL AT THE CIVIC CENTER

HOTEL WHITCOMB

*Plan Today for
Tomorrow*

"PAY CASH and SAVE"

WEINSTEIN CO.

• 1041 MARKET ST.

• 100 MARKET ST. • 1620 POLK ST.

• 615 MARKET ST. • 119 POST ST.

HOW TO PRONOUNCE THEIR NAMES

LICIA ALBANESE <i>Lee'-chee-ah Ahl-bah-nay'-zay</i>	HERBERT JANSSEN <i>Herbert Yahn'-senn</i>
LORENZO ALVARY <i>Lorenzo Ahl-yah'ry</i>	RAOUL JOBIN <i>Rah-ool Zhoh-ban'</i>
ARMANDO AGNINI <i>Ar-mahn'-dow Ah-nee'nee</i>	BRUNO LANDI <i>Brewno Lahn'-dee</i>
SALVATORE BACCALONI <i>Sahl-yah-tow'-ray Bach-ah-low'-nee</i>	LOTTE LEHMAN <i>Lotte Lay'-mahn</i>
ETIENNE BARONE <i>Et-yehn Bah-row'-nay</i>	LAURITZ MELCHIOR <i>Lauritz Mell'-kee-or</i>
FRANCES CASTELLANI <i>Frances Kah-stay-lahn'-ee</i>	GAETANO MEROLA <i>Gah-yay-tahn'-oh Mare'-oh-lah</i>
GEORGE CEHANOVSKY <i>George Chay-han-off'-skee</i>	IVAN PETROFF <i>Ee-yahn Pet-roff</i>
VIVIAN DELLA CHIESA <i>Vivian Dell-lah-Kee-ay'-zah</i>	EZIO PINZA <i>Et'-see-oh Peen'-zah</i>
OTELLO CERONI <i>Otello Chay-row'-nee</i>	LILY PONS <i>Lee-lee Pawnce</i>
ANTONIO DELL'OREFICE <i>Antonio Dell-oh-reff'-ee-chay</i>	ANITA RAGUSA <i>Anita Rah-goo'-sah</i>
ALESSIO DE PAOLIS <i>Ah-less'-see-oh Deh Pah'-oh-leece</i>	HILDE REGGIANI <i>Hill-day Rah-jah'-nee</i>
LILY DJANEL <i>Lee-lee Zhan-nell</i>	KARL RIEDEL <i>Karl Ree'-del</i>
HERTA GLAZ <i>Hair-tah Glahz</i>	STELLA ROMAN <i>Stay-lah Row-mahn'</i>
FREDERIC JAGEL <i>Frederick Yay-gel</i>	ELEANOR STEBER <i>Eleanor Stee'-burr</i>
	RISE STEVENS <i>Ree'-suh Stevens</i>
	HELEN TRAUBEL <i>Helen Trah'-oo-bell</i>
	FRANCESCO VALENTINO <i>Francesco Vah-lenn-teen'-oh</i>

BELFAST

★
Manufactured
by the makers
of
BELFAST
Dry
GINGER ALE
Famous
Since 1877



Sparkling
Water

PURE, wholesome and delightful to the taste, Belfast Sparkling Water is the ideal table beverage... it is *supreme* among the better mixers — heightens the flavor of other beverages and gives longer-lasting sparkle in the glass.

★

BELFAST BEVERAGE CO.
820 Pacific Avenue DOuglas 0547 San Francisco



Gantner ***Swimsuits***

***San Francisco's
proudest and
America's finest***

Top . . . Black Magic Nylon
Sarong . . . very light and quick
drying! One of many beautiful
Gantner styles which have be-
come famous.

GANTNER & MATTERN CO.

San Francisco • Chicago • New York

KQW and CBS

present

PATRICE MUNSEL

. . . lovely young soprano of
the Metropolitan Opera . . .

on

THE FAMILY HOUR

every Sunday

2:00 - 2:30 p.m.

KQW

The Columbia Station
for the San Francisco
Bay Area

740 on the dial

VISIT...

The Cocktail Lounge
of Distinctive
Atmosphere

**CARDINAL
RICHELIEU
ROOM**

Van Ness at Geary
"Just a Short Walk"

● Milan Lambert
at the Organ

RICHELIEU HOTEL

Leopold Lerner, Manager

GUARANTOR MEMBERS

of the

SAN FRANCISCO OPERA ASSOCIATION

Mrs. L. C. Abbott
S. L. Abbot
C. Edgar Adams
Mrs. C. R. Adams
Albert N. Ades
Mrs. John S. Adler
Mrs. Wallace Alexander
Lucy H. Allyne
T. E. Armrose
Thelma Anderson
F. W. Armour
Lawrence H. Arnstein
Edward R. Bacon
Mr. and Mrs. Frazer Bailey
Elsa M. Baker
Mr. and Mrs. George
Washington Baker, Jr.
Baldwin Piano Co.
A. R. Baldwin
B. A. Banker
Mrs. John Thomas Barnett
Peter Barnett
J. F. Barrett
Mrs. Edward F. Barron
Irving Bartel
Harriett Bathgate
Dominic A. Bazzanella
Mr. and Mrs. R. S. Beall
Mr. and Mrs. F. N. Belgrano, Jr.
Melvin Belli
David Benioff
Mrs. George Edwin Bennett
Mrs. Charles H. Bentley
Mrs. Walter H. Bentley
Franklin L. Besley
Elsie A. Best
Dr. Tholow Binkley
Mrs. James H. Bishop
Newton Bissinger
W. Harry Blatchly
Louis Bloch

Mrs. Arthur L. Bloomfield
Mr. and Mrs. Charles R. Blyth
Mrs. Angus Gordon Boggs
Mrs. Robert C. Bolton
Mrs. F. E. Boyd
Louise A. Boyd
Mr. and Mrs. James Parks
Bradley
Mr. and Mrs. John Davis Bradley
Mr. and Mrs. Walter C. Brauns
G. Temple Bridgman
Mrs. William Ellery Briggs
Roy A. Bronson
Mrs. John F. Brooke
Julia Fox Brooke
George W. Brooks
Dr. LeRoy Brooks
Arthur M. Brown, Jr.
J. Arthur Brown
James A. Brown
Mr. and Mrs. Louis C. Brown
Ralph Brown
Walter D. Brown
Mrs. E. E. Brownell
Starr Bruce
Frank J. Brucato
Frank E. Buck
Leonard W. Buck
Thomas Buck
Mr. and Mrs. F. Neil Buckley
Daniel W. Burbank
Mrs. Prentis T. Burtis
Dr. and Mrs. Edmund Butler
Mrs. Felix Butte
Mrs. John R. Cahill
Dr. William Otis Callaway
Mr. and Mrs. George T. Cameron
Lillian Campbell
Estelle Carpenter
Craig Carrier
Kenneth Cassidy

Augustine Cazenave
Mr. and Mrs. John B. Cella
Selah Chamberlain, Jr.
E. M. Chandler
Drew Chidester
Charles A. Cristin
John J. Cimino
Mrs. Baylies V. Clark
Maud H. Clark
S. G. Clark
Mrs. Tobin Clark
Capt. and Mrs. Robert A. Clarke
Mrs. John P. Coghlan
Mr. and Mrs. George D. Cohn
Mrs. Max M. Cohn
Mrs. Colbert Coldwell
Persis H. Coleman
H. D. Collier
Mr. and Mrs. Jesse C. Colman
J. J. Coney
Mary R. Conlin
Dr. and Mrs. Frederick C. Cordes
Arthur S. Crites
Carrie Bell Crocker
Mr. and Mrs. W. W. Crocker
George E. Crothers
Thomas B. Crowley
Ralph K. Davies
Alvin Davis
Mr. and Mrs. Stuart Davis
Florence E. Dean
Mrs. Charles J. Deering
Mrs. Frank P. Deering
Mrs. George deLatour
Dr. Joseph Del Genovese
Mrs. Walter A. de Martini
Frank H. Denman
John Michael Desch
Richard Detert
Mrs. Robert T. Devlin
Mrs. B. J. Dietrich



Orchids

from Podesta & Baldocchi,
America's Most Famous
Florist, make any occasion
more festive.

Podesta & Baldocchi

America's Most Famous Florists

Telephone: SUTTER 6200

224 GRANT AVENUE, SAN FRANCISCO



ATTIL HARP SCHOOL

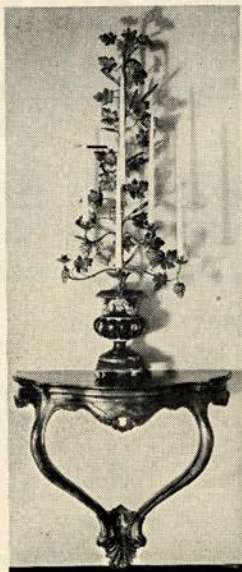
KAJETAN ATTIL, formerly 28 years First Harpist with the
San Francisco Symphony and Opera Association

INSTRUCTION IN HARP
HARPS — MUSIC AND STRINGS

1030 BUSH STREET, SAN FRANCISCO

PHONE: ORdWAY 6367

Artist Students available for engagements



Fine Antiques



*Excellent
Craftsmanship*



K. H. LENGFELD

Interior Decorator



1409 SUTTER STREET, SAN FRANCISCO

GUARANTOR MEMBERS—Continued

- | | | |
|--|--|--|
| <p>Mrs. L. W. Dinkelspiel
Mrs. Samuel L. Dinkelspiel
N. S. Dodge
Mrs. Robert Dollar II
Mrs. Leo Domb
O. Dewey Donnell, Jr.
Katharine Donohoe
Mrs. F. A. Dorn
D. C. Dorward
F. M. Dorward
R. E. Doyle
Elsie L. Dunbar
Mrs. Frank H. Dunne
Mrs. Charles Dunphy
Mrs. Dunne Dutton
Capt. and Mrs. James J. Dwyer, Jr.
Dr. and Mrs. George Ebright
Dr. Muriel E. Edwards
Albert L. Ehrman
Alexis L. Ehrman, Jr.
Mrs. Alfred Ehrman
Mr. and Mrs. Sidney M. Ehrman
Wilfred Eldred
H. A. Ellis
John W. Elwood
Mark C. Elworthy
G. Epstein
Mrs. Milton H. Esberg
Milton H. Esberg, Jr.
L. Ets-Hokin
Dr. and Mrs. Harold K. Faber
F. C. Fabry
Arthur C. Farlow
Paul I. Fagan
Alfred Fasani
Lionel B. Feigenbaum
James E. Fickett
Mrs. Marshall Fisher
James Fisher-Northrop
Carl Fleschler
Mr. and Mrs. Mortimer Fleishhacker
John F. Forbes
Mr. and Mrs. Edward T. Ford
Francis F. Forsell
Mr. and Mrs. T. G. Franck
Mrs. Jennie S. Frank
Lt. and Mrs. Richard L. Frank
Dr. Charles L. Freytag
Mr. William Fries
Kenneth E. Fultz-Vayette
Nelly Gaffney
Mr. and Mrs. Maurice A. Gale
L. Galtie
Gordon L. Gates
Mr. and Mrs. Henry Gede, Jr.
Dr. Ernst Gehrels
Alvin Gerlack
Mark L. Gerstle
Mrs. D. Ghirardelli
D. Lyle Ghirardelli</p> | <p>Dr. Arthur Collis Gibson
Maud M. Gibson
George B. Gillson
Dr. and Mrs. Frank R. Girard
Mr. and Mrs. Harry F. Gittings, Jr.
J. Harry Goff
Maurice L. Goldman
Mr. and Mrs. Louis S. Goldstein
Lutie D. Goldstein
Jack Gomperts
Mrs. Thomas Gonda
Lorraine C. Goodman
Dr. William A. Gorman
Mr. and Mrs. Joseph T. Grace
Mrs. Joseph D. Grant
Mrs. Richard Gray
Mrs. Maurice S. Greenberg
Mr. and Mrs. Stuart N. Greenberg
Mrs. F. S. Greenlee
Mrs. Hayes Griffin
Mark E. Guerin
Mr. and Mrs. Berthold Guggenhime
Gustav G. Gumpel
Mrs. Alfred S. Gunn
Madeleine Haas
Mrs. Crescent Porter Hale
Marshal Hale
Mrs. Prentis Cobb Hale
Prentis C. Hale, Jr.
R. B. Hale
Herbert E. Hall
Eminel P. Halsted
Marshall S. Hanrahan
Mr. R. C. Hansen
Mrs. Robert D. Harden
W. G. Harmon
Mr. and Mrs. Charles L. Harney
Irving F. Harris
Gregory A. Harrison
Maurice E. Harrison
Mrs. Henry H. Hart
S. M. Haslett
Mrs. Russell P. Hastings
Mrs. Juanita O. Hatch
Mr. and Mrs. Elystus Hayes
Mrs. Timothy Hayes
A. W. Hazen
Mrs. E. S. Heller
Mr. and Mrs. Walter D. Heller
Walter S. Heller
Mrs. I. W. Hellman
Mrs. Robert Henderson
Dr. and Mrs. Ernest E. Hessing
Mr. and Mrs. Stanley Hiller
Mr. and Mrs. Leslie W. Hills
Harry H. Hilp
J. H. Hinrichsen
Barnard J. Hirsch
George H. Holt
Osgood Hooker
Mr. and Mrs. L. Arundel Hopkins
Mrs. Samuel Hopkins</p> | <p>Robert A. Hornby
Mrs. H. A. Hornlein
Kurt Huber
Robert Hulbert
Dr. Harvey S. Hunsberger
Marian Huntington
Mrs. William Hyman
Mrs. James Irvine
Dr. S. Nicholas Jacobs
R. J. Jansen
Mr. and Mrs. Louis Jefferys
Otto Jeidels
Mrs. Charles A. Jewel
Mr. and Mrs. Clarence Loran Johnston
Ector R. Johnson
Mrs. Sophie Johnson
Major General Kenyon A. Joyce
Mrs. Chester W. Judson
Jean Juillard
Mrs. Ira Kahn
Mr. and Mrs. Samuel Kahn
Henry J. Kaiser
Walter F. Kaplan
S. Kauffman
Mr. and Mrs. Edward D. Keil
H. C. Kelsey
Charles Kendrick
Easton Kent
Mr. and Mrs. Marion H. Kent
Mr. and Mrs. Arthur Dale King
Percy L. King
Dr. John J. Kingston
John E. Kinney
R. W. Kinney
Mrs. Josephine R. Kleinjung
Paul L. Kleinsorge
Mrs. William E. Kleinsorge
Robert L. Kline
Mrs. Samuel Knight
Caroline Korb
Elsa R. Korb
Mrs. Jesse Koshland
Mrs. Marcus S. Koshland
Frederick J. Koster
Mrs. C. M. Kretschmer
Dr. Henry M. Kreutzmann
Mr. and Mrs. E. V. Krick
Gus Kroesen
Theodore Kroesen
Esther Kuenz
Gustave Lachman
Mrs. Albert G. Lang
Mrs. Philip V. H. Lansdale
Mrs. Charles G. Lathrop
Mrs. H. M. Lawrence
L. H. Lazarus
Edwin Leitch
Leopold Lerner
John A. Lesoine
Mr. and Mrs. Paul Levey
Robert L. Levin</p> |
|--|--|--|

CLAIRE BROWN

278
POST ST.

NEW HATS FOR FALL

ADELE MORAN

INFANTS AND CHILDREN'S WEAR
EXCLUSIVELY

Formerly with H. Liebes & Co.

18 Tillman Place

Next door to Temple Bar Tearoom

THE SAN FRANCISCO BALLET GUILD
Mrs. JULLIARD McDONALD, Pres.

Announces

San Francisco Ballet

WILLAM CHRISTENSEN
Artistic Director

HAROLD CHRISTENSEN
Ballet School Director

REYNOLD WIGGINS
Business Manager

in their

Third Annual Holiday Ballet Season

Children's Christmas Matinee
SUNDAY, DEC. 23

Gala Holiday Evenings

WEDNESDAY - - - - - DEC. 26

THURSDAY - - - - - DEC. 27

WAR MEMORIAL OPERA HOUSE

STOCKTON - - - - - FRIDAY, DEC. 28

SACRAMENTO - - - - - SATURDAY, DEC. 29

OAKLAND - - - - - SUNDAY, DEC. 30

The Ballet leaves for their eastern tour on Feb. 1st
returning May 1st

for the

Spring Ballet Homecoming

(Date to be announced)

Tickets for Holiday Ballet On Sale Normandy Lane Box Office. EX 8585

GUARANTOR MEMBERS—Continued

- J. B. Levison
 Azro N. Lewis
 Mrs. A. J. Lewthwaite
 Mrs. Samuel Lilienthal
 P. N. Lilienthal
 Mr. and Mrs. William J. Lindenberger
 F. L. Lipman
 Mrs. Norman B. Livermore
 Lawrence Livingston
 James K. Lothead
 George D. Lovdick
 J. W. Longe
 Louis R. Lurie
 Carl D. Lovotti
 James Rowland Lowe
 Mrs. A. D. Lowengart
 Mrs. A. J. Lowrey
 Edmunds Lyman
 Edna May Lyon
 James W. McAlister
 Mrs. T. R. McCarron
 Mr. and Mrs. A. M. McCarty
 Albert Connell McCary
 Mrs. Wm. H. McCormick
 Mrs. Richard S. McCreery
 Mr. and Mrs. Juilliard McDonald
 Mrs. Mark L. McDonald
 Mrs. John McGaw
 Mrs. Felix S. McGinnis
 Mrs. Lacy Maclean
 Mrs. Alfred McLaughlin
 Mrs. Clarissa McMahon
 Dean Brown McNealy
 Mr. and Mrs. F. W. McNear
 Mrs. George P. McNear
 Mr. and Mrs. Victor Maas
 Mrs. A. MacDonald
 Mr. and Mrs. John B. Mackinlay
 Marshall P. Madison
 Mr. and Mrs. Grover A. Magnin
 F. Bruce Maiden
 Mrs. J. W. Mailliard, Jr.
 Mr. and Mrs. Joseph A. Mancini
 A. F. Manspeaker
 George M. Mardikian
 Dorothy S. Marion
 Mr. and Mrs. Randolph Wyatt Martenet
 Edward Martin
 A. C. Mattei
 Mrs. Jack Maxfield
 Dr. Alice F. Maxwell
 Mr. and Mrs. Harry O. Maxwell
 Evelyn Mendessolle
 Mr. and Mrs. Gaetano Merola
 Mrs. H. C. Merritt, Jr.
 Mrs. Julian J. Meyer
 Olga M. Meyer
 Merwin A. Meyers
 Mr. and Mrs. Van Vissing Midgely
 Mr. and Mrs. C. O. G. Miller
 Mrs. Epps J. Miller
 Mrs. Maxwell C. Milton
 Henrietta Moffat
 Mr. and Mrs. Edward F. Moffatt
 James K. Moffitt
 Charles W. Moisson
 Mario Mondin
 Mr. and Mrs. Kenneth Monteagle
 Mr. and Mrs. Paioe Monteagle
 Frederick H. Montgomery
 Mrs. Joseph A. Moore
 A. C. Morici
 Marion Morris
 Mrs. H. D. Mortenson
 Guido J. Musto
 Laura Musto
 Marion Naffziger
 E. M. Nagel
 Mr. and Mrs. Ralph R. Nelson
 Julia M. Neppert
 Hugo D. Newhouse
 Dr. and Mrs. Alfred Newman
 Richard C. Newmeyer
 John Francis Neylan
 George W. Nickel
 Mrs. Ryer Nixon
 Harry Ogilvie
 Carl F. Ohliger
 Benjamin J. Older
 Mr. and Mrs. Edwin Letts Oliver
 George R. Orme
 Dr. B. H. Page
 Charles R. Page
 Mrs. S. H. Palmer
 T. B. Palmer
 Lorriene Parisen
 Mrs. Henry Passow
 Dr. Sadie D. Patek
 Gertrude Pauson
 Mrs. Oscar Butler Perry
 Howard Peterson
 George W. Phillips, Jr.
 Mrs. Margaret A. Phillips
 Mrs. Herman Phleger
 Tecla Pieper
 Mr. and Mrs. G. Pisani
 Mrs. H. D. Pischel
 A. Poladian
 Mrs. Paul Posz
 Mrs. Ashton H. Potter
 Mr. and Mrs. Stanley Powell
 Colonel John Sedgwick Pratt
 Walter G. Preddy
 Dr. Edward Purcell
 Mr. and Mrs. John B. Quigley
 Mrs. Carl Raiss
 Mrs. Lloyd F. Reighley
 Dr. Ralph A. Reynolds
 Neville J. Rich
 H. A. Richardson
 Mrs. H. W. Richards
 Mrs. Robert Ritchie
 Harrison S. Robinson
 Dr. Frank H. Rodin
 Mrs. N. Rogers
 Arline Miller Rolkin
 Colonel Robert A. Roos
 John N. Rosekrans
 Leland S. Rosener
 Alexander Ross
 Donald L. Ross
 Edmund A. Rossi
 Mrs. Angela Wing Roth
 Mrs. William P. Roth
 John Rothschild
 Ken F. Royce
 Mohr M. Rubin
 Frank K. Runyon
 Mrs. A. S. Russell
 Michael J. Ryan
 Charles B. Sanders
 Robert H. Scanlon
 Carl Schaubye
 Else Schilling
 Dr. Walter Schilling
 George B. Schirmer
 Dr. G. D. Schoonmaker
 Mr. and Mrs. Albert E. Schwabacher
 Mrs. Frank Schwabacher
 James H. Schwabacher
 Mrs. Louis A. Schwabacher
 Mr. and Mrs. Harry S. Scott
 Dr. Henry W. Scott
 Marcella C. Sedgley
 Albert Seligson
 Mr. and Mrs. R. H. Shainwald
 Mr. and Mrs. R. S. Shainwald
 Mrs. Nelson T. Shaw
 Fred R. Sherman
 Mr. and Mrs. Ray Simonds
 R. O. Simon
 Mrs. Norman J. Sinclair
 Mrs. Edgar Sinton
 Genevieve Six
 Charles W. Slack
 Mrs. Leon Sloss
 Judge and Mrs. M. C. Sloss
 Stanley C. Smallwood
 Edward J. Smiddy
 Mr. and Mrs. Charles Watt Smith
 DeLancey Smith
 Jack Soderlund
 George Willard Somers
 Mr. and Mrs. Herbert L. Sommer
 Fred H. Spiess
 Mrs. E. B. Stanwood
 G. A. Starkweather
 Glen C. Stater
 Mrs. Harold S. Stein
 Ralph J. A. Stern
 Mrs. Sigmund Stern
 Claude Albon Stichl
 Dr. John Philip Strickler
 John Robert Strickler
 Benka Strickler
 Lieut. C. W. Sudderth
 Walter H. Sullivan
 E. J. Sultan
 Bert O. Summers
 Mrs. Alfred Sutto
 Louis Sutter
 Ernest J. Sweetland
 Mrs. Andrew B. Talbot
 Dr. W. R. Taylor
 Charles Tesseyman
 George C. Thierbach
 B. Wade Thompson
 Mrs. Myron I. Thomas
 William Timson
 C. R. Tobin
 Mrs. Edward Topham, Jr.
 Mr. and Mrs. Ernest J. Torregano
 Dr. and Mrs. H. G. Trimble
 Mrs. Alfred Tubbs
 Mr. and Mrs. Nion R. Tucker
 Mr. and Mrs. Daniel Volkman
 Dr. E. P. M. Von Gehren
 Mrs. Norman L. Waggoner
 George Wagner
 Mrs. Willis J. Walker
 Morton Wallace
 Whitney Warren
 Mr. and Mrs. Karl C. Weber
 Michel D. Weill
 Lieut. Comdr. Nat. S. West
 Dr. and Mrs. H. M. Weyrauch
 Anna Louise White
 Bonnie Whitcomb
 Lieut. and Mrs. Fred Whitman
 William A. P. White
 George B. White
 Mrs. Millard C. White
 Mrs. Frederick A. Wickett
 Robert L. Wiel
 Mr. and Mrs. Brayton Wilbur
 Charles T. Williams
 Mrs. Selden Williams
 Stephen Williams
 Lt. W. F. Willmette
 Mrs. J. L. Wolf
 Mr. and Mrs. Harold L. Wright
 Barbara Young
 Dwayne G. Young
 Mrs. V. Zaruba
 J. D. Zellerbach
 Edgar T. Zook
 Kenneth C. Zwerin

BUY WAR BONDS AND STAMPS



ALBERT DAINI

Distinctive

DRAPERIES

UPHOLSTERING

This table as illustrated
is one of our own creations
made in our own shop.

1529 PINE STREET NEAR POLK • ORDWAY 6316

RUSSIAN *Atmosphere*

RUSSIAN *Music*

RUSSIAN *Food*

BALALAIKA

Russian Restaurant

960 Bush St., S.F.
Tel. OR. 8976

Cocktails · Dinners
Gypsy Music

D. Dee, Manager



Alioto's FISH GROTTO

Phil Rubino
Manager

STEAKS - CHOPS

ALSO SERVED



No. 8 Fisherman's Wharf
San Francisco

Open till 2 a.m.
Saturdays 3 a.m.

SAN FRANCISCO OPERA GUILD, INC.

Mrs. ROGER D. LAPHAM, JR., *Chairman*

Mrs. JOHN PHILLIP COGHLAN, JR., *Vice-Chairman*

Mrs. STANLEY POWELL, *Vice-Chairman*

Mrs. FREDERICK WHITMAN, *Secretary*

MR. JERD SULLIVAN, *Treasurer*

Members

- Mrs. Lloyd S. Ackerman
Mr. and Mrs. Arthur C. Adams
Mr. and Mrs. C. Edgar Adams
Mrs. John S. Adler
Mrs. Alexander Albert
Mrs. Douglas Alexander
Mrs. Wallace M. Alexander
Miss Edith W. Allyne
Miss Lucy H. Allyne
Mrs. R. M. Alvord
Mr. T. E. Ambrose
Mrs. Berrien Anderson
Miss Margaret Andrews
Mrs. Leonora Wood Armsby
Miss Lillian Armsby
Mr. Noel T. Arnold
Dr. Charlotte C. Baer
Mrs. Horace S. Baker
Mrs. George Washington Baker, Jr.
Mrs. William P. Baker
Mrs. Edward F. Barron
Mrs. R. M. Barthold
Mrs. Edward Otis Bartlett
Mrs. F. Bauden
Mrs. Samuel Bauer
Mrs. Charles Beardsey
Mr. S. D. Bechtel
Mrs. Julian Palmer Beek
Dr. Bernard C. Begley
Mrs. Reed J. Bekins
Mr. and Mrs. F. N. Belgrano, Jr.
Mrs. George Edwin Bennett
Mrs. G. Grace Benoit
Mrs. Charles H. Bentley
Mrs. Walter H. Bentley
Miss Jessie E. Benton
Mrs. Dikriam M. Berberian
Mrs. E. Bianco
Dr. and Mrs. Tholow Binkley
Mrs. James Arthur Bishop
Mrs. James Hall Bishop
Mrs. Charles N. Black
Miss Jennie M. Blair
Miss Phyllis Bliss
Mr. Louis Bloch
Miss Ruth V. Bloch
Mr. and Mrs. Charles R. Blyth
Mrs. Angus Gordon Boggs
Mr. and Mrs. Harold W. Bonner
Mrs. M. A. Bowen
Mrs. F. H. Bowles
Miss Louise A. Boyd
Miss Nina Boyle
Mrs. James Parks Bradley
Mrs. John D. Bradley
Mrs. W. C. Brauns
Mrs. A. F. Bray
Mrs. John N. Breeden
Miss Marie Brewer
Mrs. William Briggs
Mrs. L. H. Brinck
Miss Bogardus Brodt
Mrs. Julia Fox Brooke
Mr. Arthur M. Brown, Jr.
Mrs. Cabot Brown
Mrs. Hilyer Brown
Mr. and Mrs. James Brown
Mrs. Walter D. Brown
Dr. Walter H. Brown
Mr. Frank J. Brucato
Mrs. Starr Bruce
Mr. Starr Bruce
Mr. Leo Bruck
Mrs. B. J. Brun
Dr. Edward John Buckley
Mrs. Edward J. Buckley
Mr. and Mrs. F. Neil Buckley
Mrs. Edna W. Buckwalter
Mrs. William J. Bultmann
Mrs. Robert B. Burroughs
Mrs. Arthur B. Cahill
Mr. Lewis Callaghan
Dolores Calles
Dr. William Otis Calloway
Mr. George T. Cameron
Major C. J. Carey
Mr. Russell Carpenter
Mrs. N. Casenave
Mrs. John Casserly
Mrs. A. L. Chickering
Mr. Drew Chidester
Madame Clara
Mrs. Tobin Clark
Mr. R. A. Cleaveland
Mr. Newton Booth Coghlan
Mr. John P. Coghlan
Mrs. John P. Coghlan
Mrs. John P. Coghlan, Jr.
Mrs. Betty Cohn
Mrs. Max Cohn
Mrs. Colbert Coldwell
Miss Persis H. Coleman
Mr. and Mrs. Waldo S. Coleman
Mr. H. D. Collier
Mrs. Jesse C. Colman
Mr. Joseph J. Coney
Miss Mary R. Conlin
Mrs. W. B. Cope
Mrs. B. Hardin Corbin
Dr. and Mrs. Frederick C. Cordes
Miss Mary Cowerd
Miss Mona Crellin
Mr. Templeton Crocker
Mr. William W. Crocker
Judge George E. Crothers
Mrs. John D. Crummev
Mrs. Emile F. Cuenin
Mrs. Leon Cuenin
Miss Peggy Cunningham
Miss Martha Curtis
Mr. and Mrs. O. K. Cushing
Mrs. Walter R. Cusick
Mrs. Chester Dahl
Mrs. Marie Hicks Davidson
Miss Florence Dean
Mrs. Charles J. Deering
Mrs. Frank P. Deering
Mrs. Georges deLatour
Mrs. S. T. DeLee
Mrs. Arthur J. DeLormier
Mr. Frank H. Denman
Mr. and Mrs. John Michael Desch
Mrs. Donald Dickey
Mrs. B. J. Dietrich
Mrs. Lloyd W. Dinkelspiel
Mrs. Samuel W. Dinkelspiel
Mr. and Mrs. Dewey Donnell
Miss Katharine Donohoe
Mrs. Warrington Dorst
Mrs. Paul M. Downing
Mrs. Frank B. Dray
Mrs. H. B. Drescher
Mrs. Lambert Dunbar
Mrs. Charles Dunpy
Mrs. Dunn Dutton
Mrs. Charles R. Eaton
Dr. Muriel E. Edwards
Mr. C. Wesley Edwards
Mr. Philip Ehrlich
Mrs. Alfred Ehrman
Mrs. Sidney Ehrman
Miss Lucile Eising
Mrs. Milton H. Esberg
Miss Marian W. Ewes
Mrs. Harold E. Faber
Mr. Lionel B. Feigenbaum
Mrs. Walter Filer
Mrs. Marshall Fisher
Mrs. R. M. Fitzgerald
Mrs. William M. Fitzhugh
Mr. Charles Flammer
Mrs. Herbert Fleishhacker, Jr.
Mrs. Mortimer Fleishhacker, Jr.
Mrs. James L. Flood
Mrs. B. C. Flood
Mrs. John F. Forbes
Mrs. Bernard W. Ford
Mr. and Mrs. Edward T. Ford
Mrs. W. Parmer Fuller, Jr.
Mrs. W. Parmer Fuller III
Mrs. Reed Funsten
Mr. Angelo Fusco
Mrs. Nellie Gaffney
Mrs. Vallejo Gantner
Mrs. Alfred Ghirardelli
Mr. D. Lyle Ghirardelli
Dr. and Mrs. Thomas A. Gibson
Miss Amelie Gier
Mrs. Frank Girard
Dr. Frank Girard
Mrs. Harry F. Gittings, Jr.
Mrs. J. H. Glide
Mrs. Henry Goldstein
Miss Lutie Goldstein
Mrs. A. H. Goldstone
Mr. Jack Gomperts
Miss Jane Goodfellow
Miss Lorraine C. Goodman
Mrs. Joseph Grace
Mrs. James Graham
Mrs. Joseph D. Grant
Mrs. Spencer Grant
Mrs. Horace Gray
Mr. and Mrs. Stuart N. Greenberg
Mrs. Frederick L. Greenlee
Mrs. Berthold Guggenhieme
Mrs. Gustav Gumpel
Mrs. Morgan A. Gunst
Miss Rhoda Haas
Mrs. Walter A. Haas
Mrs. Walter A. Haas, Jr.
Miss Ethel Hager
Mrs. Randolph Hale
Mr. R. B. Hale
Mrs. William L. Halfpenny
Mrs. John Lindsay Hanna
Mrs. Richard J. Hanna
Mrs. Robert D. Harden
Mrs. L. W. Harris
Mrs. Russell Hastings
Mrs. Eulystus Lyon Hayes
Mrs. Timothy Hayes
Mr. A. W. Hazen
Mrs. Richard Heimann
Mrs. E. S. Heller
Mr. Walter D. Heller
Mr. Walter S. Heller
Mrs. Frederick Hellman
Mrs. I. W. Hellman
Mrs. Barbara Urba Hendel
Mrs. Wellington S. Henderson
Mrs. A. W. Hewlett
Mr. Benjamin H. Hicklin
Miss Ann Hill
Mrs. Fentress Hill
Mrs. Harold Hill
Mrs. Harry Hill
Mrs. Stanley Hiller
Mr. and Mrs. Harry H. Hilp
Mrs. A. F. Hockenbeamer
Mrs. Clifford P. Hoffman
Mrs. Osgood Hooker
Mrs. Robert Hotte
Mrs. Thomas Carr Howe, Jr.
Miss Mina B. Hughes
Mrs. Thomas R. Hughes
Miss Betty V. Humphreys
Mrs. T. B. Hunter
Marian P. Huntington

OPERA GUILD MEMBERS—Continued

- Mrs. John Power Hutchins
 Mrs. James Irvine
 Mrs. James Jackman
 Dr. S. Nicholas Jacobs
 Mr. R. J. Jansen
 Mr. Harold I. Johnson
 Mrs. Otis Johnson
 Mrs. Walter S. Johnson
 Mrs. Ivar Johnson
 Mrs. Clarence Loran Johnston
 Dr. Herbert G. Johnstone
 Mrs. Elizabeth Jorgeneel
 Mrs. Henry Kaiser
 Mr. Ben C. Keator
 Mrs. Charles J. Keenan
 Mrs. Edward D. Keil
 Mrs. T. Henshaw Kelly
 Mr. Charles Kendrick
 Mrs. Easton Kent
 Mrs. Donald Kieffer
 Mrs. Henry S. Kiersted
 Mrs. W. K. Kilpatrick
 Mr. Percy L. King
 Mr. A. J. Kirkpatrick
 Mrs. J. R. Kleinjung
 Mrs. John B. Knox
 Miss Caroline Korbel
 Mrs. Abraham Koshland
 Mrs. Daniel Koshland
 Mrs. Marcus S. Koshlund
 Miss Frances Kosta
 Mr. Frederick J. Koster
 Mr. Gus Kroesen
 Mrs. H. N. Kuechler, Jr.
 Esther Kuenz
 Mrs. Breck Lamont
 Mrs. Albert George Lang
 Mrs. Philip V. H. Lansdale
 Honorable and Mrs. Roger D.
 Lapham
 Mrs. Roger D. Lapham, Jr.
 Mrs. Charles G. Lathrop
 Mrs. T. M. Lauridsen
 Mrs. Claude Lazard
 Miss Rena Lazelle
 Mrs. A. Lendle
 Mrs. Louis Lengfeld
 Mr. Felix A. Lenhart
 Mrs. John A. Lesoine
 Miss Elvira LeStrange
 Mrs. Azro N. Lewis
 Mrs. Sidney Liebes
 Frances Marie Lilienthal
 Mr. Philip N. Lilienthal, Jr.
 Mr. F. L. Lipman
 Mr. R. L. Litchfield
 Miss Edith Livermore
 Mrs. Norman Livermore
 Mr. Carl Livingston
 Mr. and Mrs. James K. Lohead
 Mrs. Dan E. London
 Miss Ann M. Lovejoy
 Miss Louise Lovell
 Mrs. W. Palmer Lucas
 Miss Myrtle Lugg
 Mrs. Thomas P. Mailliard
 Mrs. Decker McAllister
 Mrs. Atholl McBean
 Mrs. T. R. McCarron
 Mr. A. M. Carty
 Mrs. W. H. McCormick
 Mrs. John McGaw
 Mrs. D. E. McLaughlin
 Mrs. George P. McNear
 Mrs. Errol MacBoyle
 Mr. and Mrs. Grover A. Magnin
 Dr. Ergo A. Majors
 Mrs. Vivian Mann
 Mrs. Randolph W. Martenet
 Mrs. Charles O. Martin
 Mrs. Water Martin
 Mrs. Charles Mayer
 Miss Evelyn Mendesolle
 Mrs. William G. Merchant
 Mrs. R. P. Merillion
 Mr. and Mrs. Gaetano Merola
 Mrs. H. C. Merritt, Jr.
 Mrs. John B. Metcalf
 Mrs. Julian J. Meyer
 Mrs. Robbins Milbank
 Mr. C. O. G. Miller
 Mrs. Harry East Miller
 Mrs. Earl D. Minton
 Pvt. Franklin Mittau
 Mr. Edward F. Moffatt
 Mr. J. K. Moffitt
 Mrs. E. R. Mogel
 Mrs. L. Mogel
 Mrs. Kenneth Monteagle
 Mr. Kenneth Monteagle
 Mr. and Mrs. Paige Monteagle
 Mr. Frederick H. Montgomery
 Mr. George Montgomery
 Mr. Charles Moore
 Mrs. Joseph A. Moore
 Mrs. Ramsay Moran
 Mrs. James W. Morgan
 Dr. Grace McCann Morley
 Mrs. Philip C. Morse
 Miss Alicia Mosgrove
 Dr. W. H. Murphy
 Miss Laura Musto
 Mrs. A. N. Nathan
 National Broadcasting Co.
 Mrs. Hans Nelson
 Miss Julia M. Neppert
 Mrs. John Archibald Newcomb
 Mr. John Francis Neylan
 Mr. J. LeRoy Nickel, Jr.
 Mrs. William H. Noble
 Mrs. William H. Nolan
 Miss Anna C. O'Brien
 Mrs. Mary Obuijen
 Mrs. Jack Okell
 Miss Margaret Olcese
 Mr. Benjamin J. Older
 Mrs. A. Leslie Oliver
 Mrs. Warren Olney, Jr.
 Mrs. Julius Oppenheimer
 Mrs. William H. Orrick
 Mr. Charles R. Page
 Lorriene Parisen
 Miss Barbara Parrott
 Mr. Philip P. Paschel
 Mrs. Oscar Butler Perry
 Mrs. Herman Phleger
 Mr. and Mrs. G. Pisani
 Mr. Aram Poladian
 Mrs. Wesley A. Pomeroy
 Mrs. George A. Pope, Jr.
 Mrs. Kenneth Pope
 Mrs. Hugh B. Porter
 Mrs. M. C. Porter
 Mrs. Ashton Potter
 Mr. J. Sheldon Potter
 Miss Eva Powell
 Mrs. Jerome V. Powell
 Mrs. Stanley Powell
 Mr. and Mrs. Stanley Powell, Jr.
 Mr. Walter G. Preddy
 Mrs. John Raggio
 Dr. Ralph Arthur Reynolds
 Mrs. H. A. Richardson

ON THE RECORD

THE MUSIC YOU LOVE TO HEAR
YOUR FAVORITE OPERA, SYMPHONY
AND POPULAR NEW RELEASES

BALDWIN PIANO CO.

Record Department

310 Sutter Street

Sutter 8500

PENINSULA BOX OFFICE

"Choice seats for all attractions"

338 University Ave.
Palo Alto 22122

Ben Franklin Hotel
San Mateo 43348

1454 Burlingame Ave.
Burlingame 31232

OPERA GUILD MEMBERS—Continued

Miss Gertrude Richter	Mrs. Rose Silver	Mr. Ernest J. Torregano
Miss Margarete Riegg	Mr. R. O. Simon	Miss Anna O. Touvinen
Mrs. Walter Riegger	Mr. Charles W. Slack	Mrs. James W. Towne
Mrs. James W. Roberts	Mrs. Leon Sloss, Jr.	Dr. and Mrs. Harold Trimble
Mr. John T. Roberts	Mrs. Louis Sloss	Mrs. Henri W. Trubbull
Mr. and Mrs. Hall Roe	Judge and Mrs. M. C. Sloss	Mrs. Alfred S. Trubbs
Mrs. Nathan Rogers	Mrs. George D. Smith	Mrs. Nion Tucker
Mrs. Arline Miller Rolkin	Mrs. Josephine A. Smith	Mrs. John R. Upton
Mr. Robert A. Roos	Mrs. Melville L. Smith	Mrs. Sidney M. Van Wyck
Mr. John N. Rosekrans	Mrs. Russel Smith	Mr. and Mrs. Reginald L. Vaughan
Mrs. Charles W. Rosenbaum	Captain G. W. Somers	Mr. Paul Verdier
Mrs. Angela Wing Roth	Soroptomist Club	Mrs. Walter Vojon
Mrs. William P. Roth	Mrs. Robert Gordon Sproul	Dr. C. E. Voigt
Mrs. Dorothy Royce	Mrs. E. B. Stanwood	Mrs. Daniel Volkman
Mr. F. W. Rubke	Miss Gynne Stern	Mrs. Norman Waggoner
Mrs. Henry Potter Russell	Mrs. Sigmund Stern	Mr. George Wagner
Miss Pauline E. Ryder	Mrs. Lawrence Strassburger	Mrs. Richard Walker
Miss Virginia Ryder	Mr. and Mrs. Jerd Sullivan	Mrs. Ward Walkup
Mr. Marcus L. Samuels	Mrs. Alfred Sutro	Mr. Morton Wallace
Mrs. Karl Schaefer	Mrs. John A. Sutro	Mrs. Clarence R. Walter
Mr. and Mrs. Carl Schaubye	Mrs. Oscar Sutro	Mrs. John I. Walter
Mrs. Rudolph Schilling	Mrs. Oscar Sutro, Jr.	Mrs. Lingan Warren
Mr. George B. Schirmer	Mr. Louis Sutter	Mr. Michel D. Weill
Mr. Nat Schmulowitz	Mr. Henry F. Swift	Mrs. Dorothy Weiss
Miss Violet G. Schoning	Mrs. Alfred B. Swinerton	Mrs. Millard C. White
Mr. Albert Schwabacher	Mrs. Powers Symington	Mrs. Frederick C. Whitman
Mr. James H. Schwabacher	Mrs. Andrew Talbot	Mrs. F. A. Wickett
Mrs. Louis A. Schwabacher	Miss June Tanzer	Mrs. Brayton Wilbur
Mrs. Bert C. Scott	Mrs. David Armstrong Taylor	Mr. Stephen Williams
Mr. H. S. Scott	Mr. George C. Thierbach	Mrs. W. F. Willimette
Mr. Walter Sedgley	Mrs. F. F. Thomas, Jr.	Mrs. Dean Witter
Mr. and Mrs. Bruce Selfridge	Mrs. Myron I. Thomas	Dr. Dorothy A. Wood
Mrs. Richard H. Shainwald	Mrs. Miller Thomlinson	Mrs. Theodore Wores
Mrs. R. S. Shainwald	Barbara B. Thompson	Miss Barbara Young
Mrs. Nelson Towne Shaw	Mrs. Julian Thorne	Mrs. Clarence Young
Mrs. A. H. Shearer	Mr. W. G. Thornton	Mrs. V. Zaruba
Mrs. Fred R. Sherman	Miss Ida Thrans	Mrs. Harold I. Zellerbach
Mrs. Francis Shook	Mrs. M. C. Threlkeld	Mr. J. D. Zellerbach
Mrs. Henry J. Siegler	Mrs. Joseph Tobin	Mr. Edgar T. Zook
Mrs. Stauffer Sigall	Mrs. Edward Topham, Jr.	

FIRE NOTICE

There are sufficient exits in this building to accommodate the entire audience. The exit indicated by the lighted "Exit" sign nearest your seat is the shortest route to the street. In case of fire please do not run—**Walk through that exit.**

For extraordinary performance, magnificent musical tone and authentic cabinet design, remember this name when you buy your new radio-phonograph with FM.

Freed-Eisemann
"One of the world's great radio-phonographs"



FREED RADIO CORPORATION - NEW YORK, N. Y.

discoveries in beauty from the noteworthy H G White
collection of exclusive giftware & antiques



The London Shop

352 SUTTER ST • SAN FRANCISCO • TELEPHONE EXBROOK 2408

CONTRIBUTORS TO 1945 SEASON

<p>Amberg-Hirth Anglo California National Bank Constant J. Auger Baldwin Piano Co. Blum's Borden's Dairy Delivery Co. Bullock & Jones Co. City of Paris City Transfer & Storage Co. Columbia Concerts Inc. Davis-Schonwasser The Emporium Julius Eppstein Florists Fairmont Hotel Fox West Coast Agency Nelly Gaffney Granat Bros.</p>	<p>S. & G. Gump Company Hale Bros. Hastings Clothing Co. Joseph's Florist Juliettes KGO American Broadcasting Co. Inc. Carolyn Kelsey K. H. Lengfeld H. Liebes & Company Livingston Bros. Mr. and Mrs. Grover A. Magnin I. Magnin & Company Joseph Magnin Company Maison Mendessolle Mark Hopkins Hotel Merrill's Drug Centers</p>	<p>Musicians Union, Local No. 6 O'Connor, Moffatt & Co. Palace Hotel Pisani Printing & Publishing Co. Podesta & Baldoche Edward K. Pond Ransohoffs Roos Bros. Schneider Bros. Inc. Sherman, Clay & Co. Shreve & Co. Sommer & Kaufmann Standard of California St. Francis Hotel Weinstein Co. Inc. White House Williams & Berg Co. Yellow Cab Company</p>
--	--	--

GIFTS *that say "I'm thinking of YOU"*

California flowers . . . exquisitely reproduced in hand made ceramic pin and earring sets . . . Hand blocked smocks for house and Victory Garden wear . . . Good luck Pixies . . . Unusual, worthwhile gifts.

THE NATALIE SHOP

12 TILLMAN PLACE
Bet. Sutter & Post Sts.
Off Grant Avenue . . .
Phone: DOUGLAS 1502

STEWART BURRWELL BRADY

Scholarship Pupil of DINO BORGIOLI, London, England
Vocal Psychiatrist

644 Powell Street, San Francisco

Telephone DOUGLAS 0556

ELIZABETH WILLS

Voice Building — Coaching

Teacher of
Florence Alba

San Francisco

Studio—701 Pine Street
Telephone—SUTTER 1584

ALITA ARRICK

TEACHER OF PIANO
CLASSICAL COURSE

Pupils Prepared for Recitals,
Vocal Coaching and
Accompanying

163 Sutter Street EXbrook 4652
San Francisco 4, Calif.

STELLA SPRAGUE BEST

VOICE

Italian Method • Bel Canto

Pupils prepared for Grand Opera and Concert
2845 Van Ness Ave. GRaystone 2786

CITY TRANSFER CO.

SERVES SAN FRANCISCO OPERA CO.

WHY NOT YOU?

MOVING - STORAGE - SHIPPING

333 TURK STREET PRospect 3060

HANCOCK BROS.

ROLL AND RESERVED SEAT TICKETS



25 JESSIE STREET DOUGLAS 2191
San Francisco 5, California

**Can this service
help me?**

Many a man, engrossed in his business or profession, has found a Trust Account with his bank helpful.

Under such an arrangement, the bank takes over and handles for its client the many time-consuming details of his *personal* investments. *Ask about this service.*

TRUST DEPARTMENT

Wells Fargo
Bank & UNION TRUST CO.

SAN FRANCISCO

Established 1852

Member F. D. I. C.



a Perfect Evening

Start with Chesterfields and you can add only orchids and the theatre for a perfect evening. Chesterfield's Right Combination World's Best Tobacco's always gives you smoking pleasure at its best. Chesterfields satisfy because they're *milder... cooler... better-tasting.*

CHESTERFIELD

RIGHT COMBINATION WORLD'S BEST TOBACCOS