

La Traviata

1945

Sunday, September 30, 1945 2:15 PM

Wednesday, October 17, 1945 8:15 PM

SFO_PUB_01_SFO_1945_15

Publications Collection

San Francisco Opera Archives

Twenty-third Annual Season
San Francisco Opera Association
Gaetano Merola General Director



War Memorial Opera House
September 25 to October 27

1945

An Invitation

TO THE WOMAN OF AFFAIRS

To every woman, her security is precious—a necessity. But the details of looking after the stocks, bonds, real estate, and other assets which provide that security are often too burdensome for any one person.

A woman can simplify her affairs, and better secure her future, just as many busy men do, by letting financial specialists shoulder part, or all, of this burden of asset management—buying, selling, exchanging, redeeming securities; leasing, repairing, insuring property; computing and paying taxes—problems ever changing, never ending.

Our Trust Service can protect and preserve her interests in many ways—advising, managing, carrying out her wishes with skilled knowledge and experience.

Have a chat with one of our Trust Officers. There will be no obligation.

TRUST DEPARTMENT

1 Sansome Street • San Francisco

20 other California offices

The logo for Anglo California National Bank is a dark green oval. Inside the oval, the word "ANGLO" is written in a large, white, serif font at the top. Below it, "CALIFORNIA NATIONAL" is written in a smaller, white, sans-serif font. At the bottom of the oval, the word "BANK" is written in a large, white, serif font.

ANGLO
CALIFORNIA NATIONAL
BANK



● Most all famous names in the world of music are exclusive with Sherman, Clay: the immortal Steinway, Chickering, and other fine pianos; the Hammond organ; the Capehart; Conn, Gibson and other fine band and orchestra instruments. Now, as it has been for 75 years, music lovers look to Sherman, Clay for everything fine in music.

SHERMAN, CLAY'S 8 PACIFIC COAST STORES ARE LOCATED IN
SAN FRANCISCO • OAKLAND • SAN JOSE • SACRAMENTO • FRESNO • PORTLAND • SEATTLE

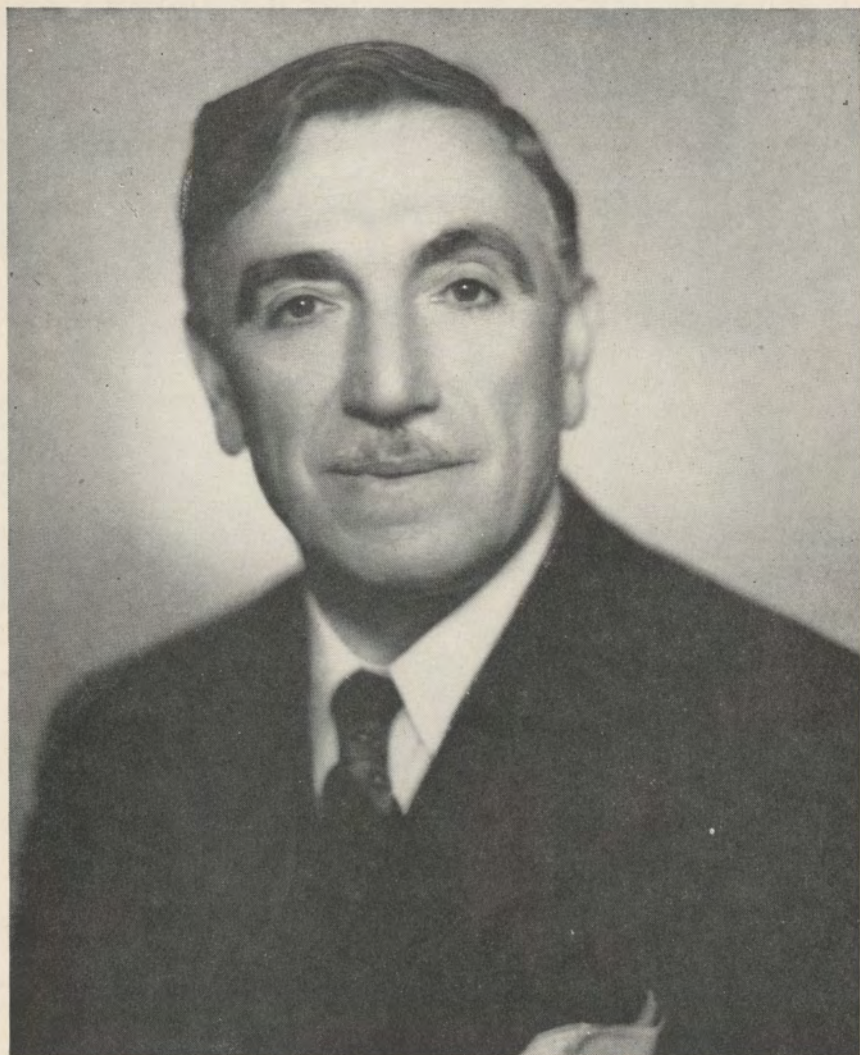
City  Paris



G. Adrian

Sinuous ripple of fringe . . .
inspired magnificence on
a sculptured black sheath
and dramatic cape.

The Gown Salon, Third Floor



G A E T A N O M E R O L A


G E N E R A L

D I R E C T O R

S A N F R A N C I S C O O P E R A C O M P A N Y

YOU'LL BE GLAD
YOU WAITED FOR

Kirk



... because sterling by Kirk, America's oldest silversmiths, has been a treasured possession in American homes for over a century... cherished for its superb weight, finish and proportion. Although we may not have unlimited quantities of Repousse and other inimitable Kirk patterns on hand at all times you may be sure that your order will be filled as rapidly as possible.

Granat Bros
SHREVE TREAT & EACRET

EXCLUSIVE AGENT FOR KIRK SILVER
IN NORTHERN CALIFORNIA

SAN FRANCISCO OPERA ASSOCIATION



OFFICERS

KENNETH MONTEAGLE
PRESIDENT

MRS. STANLEY POWELL
VICE-PRESIDENT

ARTHUR MERRILL BROWN, JR.
VICE-PRESIDENT

CHARLES R. BLYTH
VICE-PRESIDENT

GEORGE T. CAMERON
TREASURER

EDWARD F. MOFFATT
SECRETARY

BOARD OF DIRECTORS

GEORGE WASHINGTON BAKER, JR.
CHARLES R. BLYTH
ARTHUR MERRILL BROWN, JR.
GEORGE T. CAMERON
WILLIAM W. CROCKER
MORTIMER FLEISHHACKER

TIMOTHY HEALY
KENNETH MONTEAGLE
JOHN FRANCIS NEYLAN
MRS. STANLEY POWELL
MRS. HENRY POTTER RUSSELL
NION R. TUCKER

EXECUTIVE STAFF

PAUL POSZ
BUSINESS MANAGER

CURRAN SWINT, PUBLICITY DIRECTOR

ARTHUR FRAHM-LALIA DECKER
KATHLEEN LAWLOR
TICKET SALES

EVELYN CROCKETT-GERALD G. ROSS
PHYLLIS AMATI
OFFICE SECRETARIES

VETERANS OF WORLD WAR II!

If you are interested in a Home Loan

*... whether a: **GI Loan***

an

FHA Loan

or a

Bank Loan

*call at any of our
seven offices*



INCORPORATED FEBRUARY 10, 1868

THE SAN FRANCISCO BANK

Savings

Member Federal Deposit Insurance Corporation

Trust

526 California Street, San Francisco

Mission and Twenty-first Streets

Haight and Belvedere Streets

Clement Street and Seventh Avenue

West Portal Avenue and Ulloa Street

1528 Fillmore Street

1435 Burlingame Avenue, Burlingame

PARKER S. MADDUX, *President*

BOARD OF GOVERNORS

GEORGE WASHINGTON BAKER, JR.	REUBEN B. HALE	MRS. JOHN FRANCIS NEYLAN
P. A. BERGEROT	MRS. LAWRENCE W. HARRIS	JOHN FRANCIS NEYLAN
CHARLES R. BLYTH	J. EMMET HAYDEN	ETTORE PATRIZI
J. BRENDAN BRADY	TIMOTHY HEALY	RALPH L. PHELPS
H. SEWALL BRADLEY	EDWARD D. KEIL	MRS. M. C. PORTER
ARTHUR MERRILL BROWN, JR.	CHARLES H. KENDRICK	MRS. STANLEY POWELL
GUIDO CAGLIERI	MRS. MARCUS S. KOSHLAND	STANLEY POWELL
MRS. GEORGE T. CAMERON	LEWIS A. LAPHAM	ANGELO J. ROSSI
GEORGE T. CAMERON	MRS. STINE LEIS	MRS. HENRY POTTER RUSSELL
CHARLES A. CHRISTIN	J. B. LEVISON	A. SBARBORO
TEMPLETON CROCKER	MISS EDITH LIVERMORE	FRED R. SHERMAN
WILLIAM W. CROCKER	M. E. LOMBARDI	PAUL SHOUP
GEORGE E. CROTHERS	MISS RUTH W. LORING	MRS. M. C. SLOSS
MRS. FRANK P. DEERING	MISS SALLIE MAYNARD	RALPH J. A. STERN
MISS MARY C. DUNHAM	WILLIAM GLADSTONE MERCHANT	MRS. SIGMUND STERN
SIDNEY M. EHRMAN	MRS. C. D. G. MILLER	MRS. DAVID ARMSTRONG TAYLOR
MRS. WILLIAM M. FITZHUGH	ROBERT W. MILLER	M. C. THRELKELD
MORTIMER FLEISHHACKER	EDWARD F. MOFFATT	NION R. TUCKER
A. P. GIANNINI	KENNETH MONTEAGLE	RANDOLPH C. WALKER
RANDOLPH HALE	GUIDO MUSTO	WHITNEY WARREN, JR.



WAR MEMORIAL OPERA HOUSE

(OWNED AND OPERATED BY THE CITY AND COUNTY OF SAN FRANCISCO
THROUGH THE BOARD OF TRUSTEES OF THE WAR MEMORIAL)

BOARD OF TRUSTEES

CHARLES B. KLEUPFER PRESIDENT	GUIDO J. MUSTO VICE-PRESIDENT	WALTER A. LEONETTI
SIDNEY M. EHRMAN	WILBUR A. HENDERSON	RICHARD H. NEWHALL
ALVIN GERLACK	DAN S. HEWITT	RALPH J. A. STERN
D. LYLE GHIRARDELLI	J. BRUCE JONES	
EDWARD SHARKEY MANAGING DIRECTOR OF THE WAR MEMORIAL	IRA G. THOMPSON SECRETARY TO THE BOARD OF TRUSTEES	

Buffet Service in Basement Promenade and Dress Circle during all performances

LIBRETTOS AND OPERA GLASSES IN FOYER . HEAD SETS FOR THE DEAF ARE
AVAILABLE AT TABLE IN MAIN FOYER . ATTENDANT WILL CONNECT
WITH SEAT LOCATION UPON REQUEST . FOR LOST AND FOUND
INFORMATION, INQUIRE AT CHECK ROOM NO. 1

WILLIAM A. MEADE, DIRECTOR OF HOUSE SERVICE



*Over a
Century of furnishing
America's Homes*

W & J **SLOANE**

216 SUTTER near GRANT



SAN FRANCISCO 8, CALIFORNIA

SAN FRANCISCO OPERA COMPANY

GAETANO MEROLA

GENERAL DIRECTOR

PAUL POSZ
BUSINESS MANAGER

ARMANDO AGNINI
STAGE AND TECHNICAL DIRECTOR

KURT HERBERT ADLER
CHORUS DIRECTOR

HERBERT GRAF
STAGE DIRECTOR

JESSIE KEENE
SECRETARY

ETIENNE BARONE
STAGE MANAGER

WILLAM CHRISTENSEN
BALLET MASTER



CONDUCTORS and ASSISTANTS

GAETANO MEROLA

WILLIAM STEINBERG

GEORGE SEBASTIAN

PIETRO CIMARA

KARL RIEDEL

O TELLO CIRONI

KURT HERBERT ADLER

KARL KRITZ

ANTONIO DELL'OREFICE

NAOUM BLINDER
CONCERT MASTER

JULIUS HAUG
PERSONNEL MANAGER

ARTISTS

LICIA ALBANESE
SOPRANO

EVARISTO ALIBERTINI
BARITONE

LORENZO ALVARY
BASS

BRITTA ANDERSON
CONTRALTO

SALVATORE BACCALONI
BASS

BIANCA BRUNI
SOPRANO

LORRAINE CALCAGNO
CONTRALTO

LEILA CAMBI
SOPRANO

FRANCES CASTELLANI
SOPRANO

GEORGE CEHANOVSKY
BARITONE

NADINE CONNER
SOPRANO

EVELYNN CORVELLO
SOPRANO

VIVIAN DELLA CHIESA
SOPRANO

MURIEL DEMERS
SOPRANO

ALESSIO DE PADLIS
TENOR

LILY DJANEL
SOPRANO

LEO GALT
BARITONE

JOHN GARRIS
TENOR

HERTA GLAZ
CONTRALTO

CHARLES GOODWIN
BASS

PAUL GUENTER
BARITONE

MACK HARRELL
BARITONE

MARGARET HARSHAW
CONTRALTO

ELMA HEITMAN
SOPRANO

ROSE AGNES HERSCH
CONTRALTO

MARY BELLE JACOBS
SOPRANO

FREDERICK JAGEL
TENOR

HERBERT JANSSEN
BARITONE

RAOUL JOBIN
TENOR

MARILYNN KING
SOPRANO

CHARLES KULLMAN
TENOR

BRUNO LANDI
TENOR

KATHLEEN LAWLOR
SOPRANO

LOTTE LEHMANN
SOPRANO

PAUL LEIBER
TENOR

MAX LORENZINI
BARITONE

AUGUSTO LOURENZO
BARITONE

ROBERT BRUCE MACKAY
BASS

BENJAMIN MARTIN
BARITONE

LAURITZ MELCHIOR
TENOR

ROBERT MILLS
BARITONE

ROBIN NELSON
BARITONE

HERBERT NYSTROM
TENOR

WALTER OLITZKI
BARITONE

JAN PEERCE
TENOR

IVAN PETROFF
BARITONE

EZIO PINZA
BASS

LILY PONS
SOPRANO

HILDE REGGIANI
SOPRANO

ANITA RAGUSA
SOPRANO

STELLA ROMAN
SOPRANO

W. VERNON SANDERS
BASS

BETTIE SANDERSON
SOPRANO

ELEANOR STEBER
SOPRANO

RISE STEVENS
SOPRANO

GEORGE TALLONE
TENOR

JOSEPH TISSIER
TENOR

HELEN TRAUBEL
SOPRANO

CLARAMAE TURNER
CONTRALTO

FRANCESCO VALENTINO
BARITONE

THELMA VOTIPKA
SOPRANO

FREDERIC WILLIAMS
TENOR

The World's Greatest Artists

are on

VICTOR RECORDS



You can have command performances of Grand Opera in your home, through the medium of Victor Records. You will find the world's greatest artists in Victor's great Catalog of Music.

THE MUSIC AMERICA LOVES BEST!



CONSULT THESE VICTOR DEALERS FOR
YOUR VICTOR RECORD REQUIREMENTS

<p>CITY OF PARIS Douglas 4500 Paul Verdier, Pres. <i>Radios - Records</i> Normandy Lane</p>	<p>MUSIC CENTER <i>San Francisco's Newest Record Shop</i> 40 POWELL STREET <i>Open Evenings till 9 p.m.</i></p>	<p>THE WHITE HOUSE Raphael Weill & Company <i>Radio-Record Shop</i> Fourth Floor</p>
<p>THE EMPORIUM <i>San Francisco's Shopping Center</i> 835 MARKET STREET</p>	<p>O'CONNOR MOFFATT and Company <i>Stockton at O'Farrell</i> SUTter 1800</p>	<p>THE RECORD SHOP 14 Tillman Place San Francisco 8, California Off Grant Ave. bet. Post and Sutter Phone EXbrook 2383 <i>"The Best in Recorded Music"</i></p>

C H O R A L E N S E M B L E

MISSES

BRITTA ANDERSON
LUCY ARMAGANIAN
VIOLET AURAND
EILEEN BROWNE
BIANCA BRUNI
LORRAINE CALCAGNO
LELIA CAMBI
ELIZABETH CASE
GRACE COLTRONE
ELEANOR CORYELL
MURIEL DEMERS
SONYA FREED
BARBARA FRITZ
EMILY GRIGSBY
THORA HARPER

ELMA HEITMAN
ROSE AGNES HERSCH
ORTHELLA HUGHES
MARY BELLE JACOBS
RHEA KESSLER
MARILYNN KING
LUCILE KIRTLEY
SYBIL LOUISE KNAPP
KATHLEEN LAWLOR
NEVART LEVON
DOROTHY MCINTYRE
DELPHIA PHILLIPS
BETTIE SANDERSON
VERA SOLAX

DORA DI TANO, ACCOMPANIST

MESSRS.

EVARISTO ALIBERTINI
ALBERT BARRETT
HARRY BATHGATE
FRED BEARDSLEY
ALTON BERNHARD
LOUIS BRAUNSTEIN
JOHN CRONIN
GALLIANO DANELUZ
FLOYD DAVIS
LORENZO DE BEAL
AMERIGO DEL GRANDE
ARTHUR DE MASI
PHIL DOAN
LEO GALT
WILLIAM GORMAN
PAUL GUENTER
E. ERICH LAWRENCE
PAUL LEIBER

MAX LORENZINI
AUGUSTO LOURENZO
ROBERT BRUCE MACKAY
GIULIO MANCINI
BENJAMIN MARTIN
CARLO MENNUCCI
ROBIN NELSON
WILLIAM PETERSEN
WILLIAM PETERSEN
W. VERNON SANDERS
BRUCE LINWOOD
STEWART
GEORGE TALLONE
ALBERTO VANNUCCI
EDWIN VANNUCCI
FRED WAHLIN
FREDERIC WILLIAMS
HERMAN WISEMAN

BALLET

RUBY ASQUITH, PRIMA BALLERINA

WILLIAM CHRISTENSEN, CHOREOGRAPHER AND BALLET MASTER

SOLOISTS

MISSES

CELENA CUMMINGS
ROSALIE PROSCH
SALANO

MISSES

LOIS TREADWELL
JOCELYN VOLLMAR
ONNA WHITE

PRINCIPAL DANCERS

MISSES

BARBARA BADERTSCHER
BETTY CUNEO
MARCELLA DODGE
ANTOINETTE GUHLKE
JYMMI RIEDEL
SALLY WHALEN
WANA WILLIAMS

MESSRS.

ROBERT HANSEN
RUSSELL HARTLEY
FRANK NELSON
RALPH PATTERSON
JOAQUIN FELSCH
ROBERT THORSON

CORPS DE BALLET

MISSES

GENEVIEVE ASONOVICH
BONNY BELL
JANE BOWEN
VERA GOLD

MISSES

AUDREY GREENLEY
NANCY JACOBS
NANCY JOHNSON

MISSES

IRENE MANSFELDT
JUDY NATHANSON
MARCIANNE RAUB

MISSES

JANET SASSOON
JOAN VICKERS
CAROLINE WILLIAMS
SYLVIA WILLIAMS

PRODUCTION

EUGENE B. DUNKEL-FRITZ KRAENKE
SCENIC ARTISTS

EARL MCGUIRE
MASTER CARPENTER

CHARLES J. HOLZMUELLER
MASTER ELECTRICIAN

JOHN T. HEAVEY
MASTER OF PROPERTIES

FOR WAR MEMORIAL OPERA HOUSE

S. E. SIMMONS
MASTER CARPENTER

EDWARD J. ZETTEL
MASTER ELECTRICIAN

CLAUDE L. WAGGONER
MASTER OF PROPERTIES

COSTUMES AND WIGS BY GOLDSTEIN & CO.

ALEXANDER AGNINI
WARDROBE MASTER

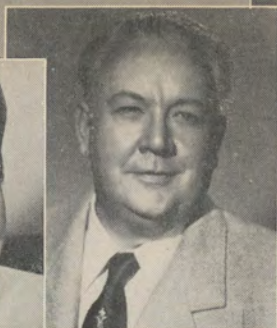
INEZ DODSON
WARDROBE MISTRESS

SUE MCGOWAN
HAIRDRESSER

EVERETT MASON
MAKEUP ARTIST

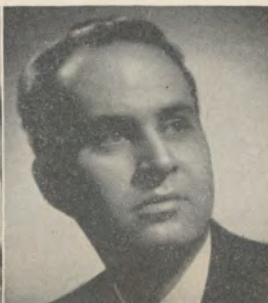
PROGRAM

PISANI PRINTING & PUBLISHING COMPANY, PUBLISHERS, DESIGNERS AND PRINTERS



LILY PONS
LAURITZ MELCHIOR
LICIA ALBANESE
RAOUL JOBIN
HELEN TRAUBEL
CHARLES KULLMAN
STELLA ROMAN
EZIO PINZA
RISE STEVENS
LORENZO ALVARY
VIVIAN DELLA CHIESA

Artists of the San Francisco OPERA COMPANY



Beaulieu Vineyard

BV

WINES



BEAULIEU VINEYARD is a family estate . . . located in the lovely Napa Valley of Northern California. Today, as for nearly half a century, we take pride in the quality of our wines. Our 600 acres of vines grow wine grapes of the finest strains. Thus the yield is far lighter than that of grapes of lesser quality.

Our old-world-type of winery has a storage capacity equal to five times our yearly production — thus we have ample facilities to develop our inventory of fine wines in small cooperage until bottle-ripe, and to bin them afterwards.

As a consequence of our painstaking methods, production is limited and our wines are not available everywhere.

FIVE REPRESENTATIVE BEAULIEU VINEYARD WINES

GEORGES DE LATOUR PRIVATE RESERVE CABERNET: An eminent wine, made solely with Cabernet Sauvignon grapes.

BEAULIEU NAPA VALLEY MUSCAT DE FRONTIGNAN: This wine has been acclaimed by experts as the finest dessert wine produced in America. A wine for entertaining.

BEAUMONT: Made with the famous Pinot Noir grapes (original cuttings from Cote d'Or district of France).

BEAUCLAIR: One of the fine white wines of the Napa Valley. Made with Johannesberger Riesling grapes.

BEAUROSÉ. A light, agreeable vinrosé. To be served very chilled. The hostess wine for lunch.

Beaulieu Vineyard

FOUNDED AND OWNED CONTINUOUSLY BY THE DE LATOUR FAMILY SINCE 1900
Vineyards and Winery at Rutherford, Napa County, California



FREDERICK JAGEL

LILY DJANEL

JAN PEECE

HERTA GLAZ

FRANCESCO VALENTINO

MARGARET HARSHAW

SALVATORE BACCALONI

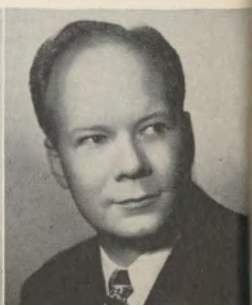
LOTTE LEHMANN

IVAN PETROFF

ELEANOR STEBER

MACK HARRELL

Artists of the San Francisco OPERA COMPANY



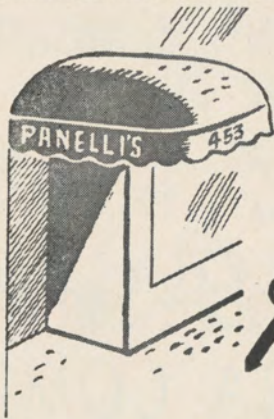


Simi Vineyard

FINE CALIFORNIA WINES

When entertaining, serve superb SIMI vintage table wines ... Burgundy, Cabernet, Carignan, Zinfandel, and Larose, Sauterne, Chablis ... matured with unhurried care from choicest Sonoma hillside grapes ... ask for SIMI ... pronounced See-Me ... at your dealer's.

PARROTT & CO. . . San Francisco . . Sole U. S. Distributors

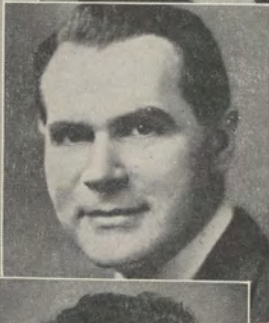


The New

Panelli's

... a distinctive Restaurant glorifying delicious Italian Cuisine, featuring the Charcoal Broiler
Cocktails

453 PINE STREET Sutter 9937
SAN FRANCISCO, CALIFORNIA



HILDE REGGIANI

HERBERT JANSEN

NADINE CONNER

BRUNO LANDI

THELMA VOTIPKA

GEORGE CEHANOVSKY

ANITA RAGUSA

ALESSIO DE PAOLIS

FRANCES CASTELLANI

WALTER OLITZKI

JOHN GARRIS

Artists of the San Francisco OPERA COMPANY



MUNICIPAL CONCERTS

1946
THE ART COMMISSION

Presents

SAN FRANCISCO
SYMPHONY ORCHESTRA

JANUARY 11



ARTUR RUBINSTEIN

THE MASTER PIANIST
PIERRE MONTEUX, CONDUCTING

JANUARY 24

TO

FEBRUARY 3



RUSSIAN BALLET

BALLET THEATRE

10 SPECTACULAR PERFORMANCES
ALL WITH SAN FRANCISCO SYMPHONY

FEBRUARY 13



LEONARD BERNSTEIN

GUEST CONDUCTOR
JESUS MARIA SANROMA, PIANIST

FEBRUARY 28



LICIA ALBANESE

PRIMA DONNA, SAN FRANCISCO AND MET. OPERA CO.
ALL OPERA PROGRAM
GAETANO MEROLA, CONDUCTING

APRIL 6



JOSEPH SZIGETI

THE INCOMPARABLE VIOLINIST
PIERRE MONTEUX, CONDUCTING



FIVE STAR SEASON

Season Reservations Now!

*SIX EVENTS including opening night of Ballet Theatre and choice of any one other Ballet performance, also the four guest artist concerts
\$11.40, \$8.40, \$6.90, \$4.80, \$3.60, tax incl. BOX OFFICE, Sherman, Clay, SU 1331



ACME
..the beer with the
high I.Q. (It Quenches!)

ACME BREWERIES • San Francisco, Los Angeles



R E P E R T O I R E

REGULAR SERIES

- CARMEN (*Bizet*) *Tuesday Night*, September 25, at 8:00
 With Stevens, Steber, Votipka, Turner, Jobin, Harrell, Olitzki, De Paolis, Cehanovsky.
 MEROLA, *Conductor*
- LA BOHEME (*Puccini*) *Friday Night*, September 28, at 8:15
 With Albanese, Conner, Kullman, Valentino, Pinza, Cehanovsky, Baccaloni, Alibertini,
 Lorenzini, Messina. MEROLA, *Conductor*
- DER ROSENKAVALIER (*Richard Strauss*) *Tuesday Night*, October 2, at 8:00
 With Lehmann, Stevens, Steber, Glaz, Votipka, Alvary, Landi, Olitzki, De Paolis,
 Harrell, Garris, King, Cambi, Lawlor, Hersch, Sanderson, Tallone, Tissier, Goodwin,
 Leiber, Guenter, MacKay, Williams. SEBASTIAN, *Conductor*
- TRISTAN UND ISOLDE (*Wagner*) *Friday Night* October 5, at 8:00
 With Traubel, Glaz, Melchior, Janssen, Alvary, Olitzki, Garris, Goodwin.
 STEINBERG, *Conductor*
- DIE WALKURE (*Wagner*) *Tuesday Night*, October 9, at 8:00
 With Traubel, Djanel, Harshaw, Melchior, Janssen, Alvary, Votipka, Glaz, Ragusa,
 Demers, Anderson, Turner, Calcagno. STEINBERG, *Conductor*
- BORIS GODOUNOFF (*Moussorgsky*) *Friday Night*, October 12, at 8:00
 With Pinza, Baccaloni, Jagel, Alvary, De Paolis, Cehanovsky, Garris, Petroff, Della Chiesa,
 Harshaw, Glaz, Castellani, Turner, Mills, Nystrom, Tissier, Goodwin, Bruni, Calcagno,
 Leiber, Martin, Lourenzo. SEBASTIAN, *Conductor*
- DON GIOVANNI (*Mozart*) *Tuesday Night*, October 16, at 8:00
 With Pinza, Baccaloni, Landi, Alvary, Mills, Roman, Della Chiesa, Albanese.
 STEINBERG, *Conductor*
- LUCIA DI LAMMERMOOR (*Donizetti*) *Friday Night*, October 19, at 8:15
 With Pons, Votipka, Pearce, Alvary, Petroff, Garris, Nystrom. CIMARA, *Conductor*
- L'HEURE ESPAGNOLE (*Ravel*) *Tuesday Night*, October 23, at 8:00
 With Albanese, Harrell, Baccaloni, De Paolis, Garris. MEROLA, *Conductor*
followed by
- SALOME (*Richard Strauss*)
 With Djanel, Harshaw, Glaz, Jagel, Janssen, Garris, Alvary, Cehanovsky, De Paolis,
 Heitman, Nelson, Mills, Tallone, Nystrom, Tissier, Goodwin, Sanders, Galt.
 SEBASTIAN, *Conductor*
- RIGOLETTO (*Verdi*) *Friday Night*, October 26, at 8:15
 With Pons, Glaz, Petroff, Pearce, Alvary, De Paolis, Cehanovsky, Calcagno, Ragusa,
 Lawlor, Nelson, Mills. CIMARA, *Conductor*

POPULAR SERIES

- LES CONTES D'HOFFMANN (*Offenbach*) *Thursday Night*, October 4, at 8:15
 With Albanese, Djanel, Glaz, Corvello, Turner, Jobin, Pinza, Valentino, Olitzki,
 De Paolis, Alvary, Garris, Tissier, Mills, Sanders. MEROLA, *Conductor*
- CARMEN (*Bizet*) *Thursday Night*, October 11, at 8:00
 With same cast as Regular Series performance.
- DER ROSENKAVALIER (*Richard Strauss*) *Thursday Night*, October 18, at 8:00
 With same cast as Regular Series performance.
- BORIS GODOUNOFF (*Moussorgsky*) *Thursday Night*, October 22, at 8:00
 With same cast as Regular Series performance.
- DON GIOVANNI (*Mozart*) *Thursday Night*, October 25, at 8:00
 With same cast as Regular Series performance except Eleanor Steber will sing Donna Elvira
 and Nadine Conner will sing Zerlina.

EXTRA PERFORMANCES

- LA TRAVIATA (*Verdi*) *Sunday Matinee*, September 30, at 2:15
 With Albanese, Ragusa, Lawlor, Kullman, Valentino, De Paolis, Cehanovsky, Olitzki,
 Goodwin. MEROLA, *Conductor*
- CAVALLERIA RUSTICANA (*Mascagni*) *Sunday Matinee*, October 7, at 2:15
 With Della Chiesa, Glaz, Votipka, Kullman, Petroff.
followed by
- I PAGLIACCI (*Leoncavallo*)
 With Albanese, Jobin, Valentino, Harrell, De Paolis, Tallone, Sanders.
 ADLER, *Conductor*
- TRISTAN UND ISOLDE (*Wagner*) *Sunday Matinee*, October 14, at 2:00
 With same cast as Regular Series performance except Margaret Harshaw will sing Brangane.
- LA TRAVIATA (*Verdi*) *Wednesday Night*, October 17, at 8:15
 With same cast as Regular Series performance.
- BARBER OF SEVILLE (*Rossini*) *Sunday Matinee*, October 17, at 2:00
 With Reggiani, Turner, Landi, Valentino, Baccaloni, Pinza, De Paolis.
 CIMARA, *Conductor*
- LA BOHEME (*Puccini*) *Wednesday Night*, October 24, at 8:15
 With same cast as Regular Series performance except Vivian Della Chiesa will sing Mimi.
- AIDA (*Verdi*) *Saturday Night*, October 27, at 8:00
 With Roman, Harshaw, Jagel, Petroff, Pinza, Alvary, De Paolis, Votipka.
 MEROLA, *Conductor*

For the finest music in radio . . .

Keep tuned to

KPO

★ **680** on your dial

John Charles Thomas

Sun. at 11:30 a.m.



Contented Hour

Mon. at 7:00 p.m.

General Motors Symphony

Sun. at 2:00 p.m.



Telephone Hour

Mon. at 9:00 p.m.

Album of Familiar Music

Sun. at 6:30 p.m.



Light and Mellow

Tues. at 9:30 p.m.

Hour of Charm

Sun. at 7:00 p.m.



Standard School Broadcast

Thurs. at 10:00 a.m.
(starting Oct. 18)

Standard Hour

Sun. at 8:30 p.m.



Waltz Time

Fri. at 6:00 p.m.

Voice of Firestone

Mon. at 5:30 p.m.



Know Your Symphony

Sat. at 5:00 p.m.



Part of a continuous Parade of Stars
heard over KPO and the
NATIONAL BROADCASTING COMPANY
America's Number One Network

THE SAN FRANCISCO OPERA ASSOCIATION

Presents

SAN FRANCISCO'S GREATEST DANCE FESTIVAL

An Unprecedented Ballet Revue

Old Classical

Modern

New Classical

THE ONE AND ONLY

Ballet Russe de Monte Carlo

Two Weeks — Fifteen Gala Performances

Repertoire

Evenings at 8:30

Tues. Eve., Nov. 13

BALLET IMPERIAL
*COMEDIA BALLETTICA
L'APRES MIDI D'UN FAUNE
LE BEAU DANUBE

Wed. Eve., Nov. 14

LE BOURGEOIS GENTILHOMME
*MOZARTIANA
SCHEHERAZADE

Thurs. Eve., Nov. 15

THE SNOW MAIDEN
*CONCERTO BAROCCO
DIVERTISSEMENTS FROM COPPELIA

Fri. Eve., Nov. 16

BALLET IMPERIAL
*FRANKIE AND JOHNNY
GRAND ADAGIO
LE BEAU DANUBE

Sat. Eve., Nov. 17

CONCERTO BAROCCO
DANSES CONCERTANTES
COMEDIA BALLETTICA
RODEO

Sun. Mat., Nov. 18

LES SYLPHIDES
LE BOURGEOIS GENTILHOMME
GRAND ADAGIO
RODEO

Sun. Eve., Nov. 18

MOZARTIANA
FRANKIE AND JOHNNY
L'APRES MIDI D'UN FAUNE
LE BOURGEOIS GENTILHOMME

Matinees at 2:30

Mon. Eve., Nov. 19

THE SNOW MAIDEN
MOZARTIANA
L'APRES MIDI D'UN FAUNE
SCHEHERAZADE

Tues. Eve., Nov. 20

CHOPIN CONCERTO
DANSES CONCERTANTES
COMEDIA BALLETTICA
RODEO

Wed. Eve., Nov. 21

CONCERTO BAROCCO
L'APRES MIDI D'UN FAUNE
THE NUTCRACKER

Thurs. Eve., Nov. 22

MOZARTIANA
FRANKIE AND JOHNNY
DIVERTISSEMENTS FROM COPPELIA

Fri. Eve., Nov. 23

LES SYLPHIDES
DANSES CONCERTANTES
PAS DE DEUX CLASSIQUE
SCHEHERAZADE

Sat. Mat., Nov. 24

LES SYLPHIDES
CONCERTO BAROCCO
COPPELIA

Sun. Mat., Nov. 25

THE SNOW MAIDEN
COMEDIA BALLETTICA
THE NUTCRACKER

Sun. Eve., Nov. 25

CONCERTO BAROCCO
COMEDIA BALLETTICA
MOZARTIANA
LE BEAU DANUBE

* San Francisco debut

ALEXANDRA DANILOVA
NATHALIE KRASSOVSKA
RUTHANNA BORIS
MARIA TALLCHIEF
DOROTHY ETHERIDGE
GERTRUDE SVOBODINA

PAULINE GODDARD
YVONNE CHOUTEAU
MARIE-JEANNE
FREDERIC FRANKLIN
LEON DANIELIAN
NICOLAS MAGALLANES

MICHEL KATCHAROFF
NIKITA TALIN
HERBERT BLISS
PETER DEIGN
ROBERT LINDGREN
STANLEY ZOMPAKOS

Brilliant Corps de Ballet · Symphony Orchestra · Company of 125



Tickets: \$3.00, \$2.40, \$1.80, \$1.20, Tax Incl. Opera Box Office, City of Paris, EX 8585

WAR MEMORIAL OPERA HOUSE



Carmen Cavallaro
AND HIS FAMOUS ORCHESTRA
OPENS TUESDAY, OCTOBER 2ND

hotel
MARK HOPKINS
GEO. D. SMITH • GENERAL MANAGER

MONROE-ANDREW

A DISTINCTIVE MEN'S SHOP

British Woolens • Gentlemen's Furnishings
Hats—Sportswear

Custom Tailors

386 POST STREET

THE CONCERT DIVISION OF THE
SAN FRANCISCO OPERA ASSOCIATION

GAETANO MEROLA, *General Director*

PAUL POSZ, *Business Manager*

SEASON 1945-1946

A New High in Concert Values

TWO OPERAS — PLUS

Tuesday, Nov. 13
BALLET Russe
DE MONTE CARLO
Thursday, Jan. 3
TRAUBEL
Sunday, Jan. 6
HEIFETZ

Friday, Jan. 18
ROSARIO and ANTONIO

Monday, Jan. 21
SCHNABEL

Monday, Feb. 11
BJOERLING

Tuesday, Feb. 26
SERKIN

Tuesday, Mar. 5
ROBESON

Monday, Mar. 18
TOUREL

Tuesday, Mar. 26
MENUHIN

TICKET PRICES

Orchestra and Boxes, \$3.00; Dress Circle, \$1.80 Tax Included

Other Sections Sold Out

Opera Box Office — City of Paris — Ex 8585

WAR MEMORIAL OPERA HOUSE

4 VICTOR ALBUMS YOU SHOULD OWN

ENRICO CARUSO: Metropolitan Revivals from Lucia, Masked Ball, Rigoletto, La Boheme, Martha, I Lombardi, Faust, Samson et Delilah.

BORIS GODOUNOFF (abridged) Featuring Alexander Kipnis. All in Russian, complete on five 12-inch records.

SCENES FROM WAGNER OPERAS: Lauritz Melchior, singing arias from Siegfried, Tristan und Isolde, Lohengrin, Tannhauser, Der Fliegende Hollander.

DER ROSENKAVALIER: arranged as a symphonic suite; recorded by the Cincinnati Symphony Orchestra.

For opera albums or single records, we invite you to visit the Classics Room on our Record Balcony.

SCHWABACHER-FREY

MARKET OPPOSITE GRANT

THE OFFICIAL PIANO *of the*
SAN FRANCISCO OPERA COMPANY

BALDWIN



Choose your Piano as the Artists Do



Lily Pons

Ezio Pinza

Helen Traubel

THE BALDWIN PIANO CO.

310 SUTTER STREET, SAN FRANCISCO
1828 WEBSTER STREET, OAKLAND

San Francisco Symphony Orchestra

Pierre Monteux, Conductor

LEONORA WOOD ARMSBY, *President and Managing Director*

HOWARD K. SKINNER, *Business Manager*



SCHAPIRO
ANDERSON

STERN

MALCUZYNSKI
SCHNABEL

FLEISHER
MONTEUX

URY
HOROWITZ

KANDER
LEVANT
STRAVINSKY

Twelve Friday Afternoons

Promptly at 2:30 o'clock

- NOV. 23 OPENING CONCERT
NOV. 30 VLADIMIR HOROWITZ, *Pianist*
DEC. 7 ORCHESTRAL PROGRAM
DEC. 14 GERHARD KANDER, *Violinist*
DEC. 21 LEON FLEISHER, *Pianist*
JAN. 4 MAXIM SCHAPIRO, *Pianist*
JAN. 18 ARTUR SCHNABEL, *Pianist*
FEB. 8 ISAAC STERN, *Violinist*
MAR. 15 WITOLD MALCUZYNSKI, *Pianist*
MAR. 22 IGOR STRAVINSKY, *Conductor*
MAR. 29 TANYA URY, *Pianist*
APR. 12 CLOSING CONCERT

Three Thursday Evenings

Promptly at 8:30 o'clock

- JAN. 17 ARTHUR SCHNABEL, *Pianist*
FEB. 21 MARIAN ANDERSON, *Contralto*
MAR. 7 OSCAR LEVANT, *Pianist*

Fourteen Saturday Evenings

Promptly at 8:30 o'clock

- NOV. 24 OPENING CONCERT
DEC. 1 VLADIMIR HOROWITZ, *Pianist*
DEC. 8 ORCHESTRAL PROGRAM
DEC. 15 GERHARD KANDER, *Violinist*
DEC. 22 LEON FLEISHER, *Pianist*
JAN. 5 MAXIM SCHAPIRO, *Pianist*
JAN. 19 ARTUR SCHNABEL, *Pianist*
FEB. 9 ISAAC STERN, *Violinist*
FEB. 23 MARIAN ANDERSON, *Contralto*
MAR. 9 OSCAR LEVANT, *Pianist*
MAR. 16 WITOLD MALCUZYNSKI, *Pianist*
MAR. 23 IGOR STRAVINSKY, *Conductor*
MAR. 30 TANYA URY, *Pianist*
APR. 13 CLOSING CONCERT

Season Tickets Now On Sale

Sherman, Clay & Co., Kearny and Sutter Sts., San Francisco, Zone 8. SUtter 1331

WAR MEMORIAL OPERA HOUSE

NOVEMBER 23, 1945 • APRIL 13, 1946



Nicholas Johnston

MASTER PHOTOGRAPHER

SAN FRANCISCO

427 POST ST. HOTEL ST. FRANCIS

YUKON 2061

SUNDAY MATINEE, SEPTEMBER 30, at 2:15

† *La Traviata*

Opera in four acts. Music by Giuseppe Verdi.

Text by Piave, after Dumas' "La Dame aux Camelias."

THE CAST

Violetta Valery, a lady of the demi-monde.....LICIA ALBANESE
Alfredo Germont, lover of Violetta.....CHARLES KULLMAN
Giorgio Germont, his father.....FRANCESCO VALENTINO
Gaston, Viscount of Letorieres.....ALESSIO DE PAOLIS
Baron Douphol, a rival of Alfredo.....GEORGE CEHANOVSKY
Flora, friend of Violetta.....*ANITA RAGUSA
Annina, maid of Violetta.....KATHLEEN LAWLOR
Dr. Granville.....CHARLES GOODWIN
Marquis d'Obigny.....WALTER OLITZKI
Major-domoMAX LORENZINI

Ladies and Gentlemen, Friends of Violetta and Flora.

* San Francisco debut

Solo Dancers: Ruby Asquith and Willam Christensen

Corps de Ballet

STAGE DIRECTOR

ARMANDO AGNINI

CONDUCTOR

GAETANO MEROLA

CHORUS DIRECTOR

KURT HERBERT ADLER

TIME AND PLACE: About 1840; Paris and Environs

Act I: Drawing-room in the House of Violetta

Act II: A Villa near Paris

Act III: Garden of Flora's Palace

Act IV: Violetta's Bed Chamber

†Extra Performance of "La Traviata," October 17

TICKETS FOR EXTRA PERFORMANCES
AT OPERA BOX OFFICE, CITY OF PARIS

Encores not permitted — Bell rings three minutes before curtain rises

The Story of "La Traviata"

ACT I

A party is in progress in the salon of Violetta's home, and Alfredo, who has come with friends, succumbs to the charms and beauty of the hostess. The guests retire to an adjoining room to dance, but Violetta, who is suffering from the early stages of consumption, is prevented from joining them by a severe coughing-spell, and remains on the lounge to recover. Alfredo remains with her, expressing first his solicitation and then his love, which deeply touches Violetta. Later, when the guests have departed, Violetta contemplates this great new love which has come to her.

ACT II

Violetta has deserted her former life and friends, and is living most happily with Alfredo in a small country house near Paris to which they have retired. Alfredo, upon learning from Annina that Violetta has quietly been selling her jewelry to aid in defraying expenses, departs for Paris to get money with which to repay her. Alfredo's father (Germont) arrives and succeeds in persuading Violetta that she must give up Alfredo and their happiness, not only because Alfredo's own career is threatened by this liaison, but also because its continuance will jeopardize the marriage of Alfredo's sister, for whom the father also pleads. As Germont departs, Violetta writes a note of farewell to Alfredo, but he returns before she finishes. She hides the letter and conceals her real feelings. When Alfredo tells her he has heard his father is to visit them, she departs on the pretext of leaving them alone, but sends the letter back by messenger. When Germont arrives he finds his son in despair, and vainly attempts to stir him by recalling memories of his home in "fair Provence."

ACT III

Alfredo returns to Paris seeking Violetta and finds her with her new companion, Baron Douphol, at a ball being held at the palace of her friend Flora. Alfredo, winning heavily at the gaming-table, challenges the Baron to a game and adds still further to his winnings. When the guests retire for supper, Violetta returns, followed at her request by Alfredo, whom she implores to leave, fearful of the prospect of a duel between the two men. Alfredo bitterly charges her with falseness, which, remembering her promise to Germont, she does not deny. Alfredo summons the guests and before them all denounces her, throwing at her feet his winnings of the evening. As Violetta faints, Germont arrives seeking his son. He alone knows the tragic significance of the scene, but for the sake of his son and daughter cannot disclose it.

ACT IV

Violetta is now confined to her bed by the ravages of the disease from which she has suffered, and, although the doctor attempts to cheer and reassure her, she knows she has not long to live. She is cheered by a letter from Germont, who would seek to undo the damage he has done, and writes that Alfredo is returning to seek her pardon. But she feels it will be too late. Alfredo arrives, and in the great happiness of the moment they plan to leave Paris; but the excitement proves too much, and, as Germont and the doctor arrive, Violetta collapses in her lover's arms.



LADIES
PLEASE
REMOVE
YOUR
HATS

**BEE & RAY
GOMAN'S
GAY 90'S**
555 PACIFIC AVE
"ON THE OLD
BARBARY COAST"
CONTINUOUS
"NAUGHTY
NINETIES"
ENTERTAINMENT

"Original Gibson Girl" drawn by Charles Dana Gibson—1904, for Collier's Weekly.

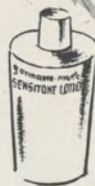


DIFFERENT SKINS

NEED DIFFERENT FOUNDATIONS

That is why Monteil created *Beauty Balm* and *Sensitone Lotion*—the one for dry or normal skins, the other for those who like a lighter foundation.

Either will keep you beautifully powdered without that powdery look, diffusing your rouge into subtle colors echoes of your own complexion. *Beauty Balm* in white, bronzé and muted rose. *Sensitone Lotion* in natural, sun tan and muted rose.



Germaine Monteil

TUESDAY NIGHT, OCTOBER 2, at 8:00

† *Der Rosenkavalier*

Comedy for music in three acts by Hugo von Hofmannstahl
Music by Richard Strauss

THE CAST

Marschallin, wife of Field Marshall Prince von Werdenberg.....	LOTTE LEHMANN
Baron Ochs, of Lerchenau.....	LORENZO ALVARY
Octavian, a young nobleman.....	RISE STEVENS
Herr von Faninal, a rich merchant, newly ennobled.....	WALTER OLITZKI
Sophia, his daughter.....	ELEANOR STEBER
Marianne, her duenna.....	THELMA VOTIPKA
Valzacchi, an intrigant.....	ALESSIO DE PAOLIS
Annina, his accomplice.....	HERTA GLAZ
A Singer.....	BRUNO LANDI
A Landlord.....	JOHN GARRIS
A Police Commissioner.....	GEORGE CEHANOVSKY
Major-domo of Faninal.....	GEORGE TALLONE
Major-domo of the Marschallin.....	JOSEPH TISSIER
A Notary.....	CHARLES GOODWIN
A Milliner.....	*MARILYNN KING
A Widow.....	LEILA GAMBI
A Vendor of Animals.....	PAUL LEIBER
Three Orphans.....	{ KATHLEEN LAWLOR ROSE AGNES HERSCH *BETTIE SANDERSON
Negro Page.....	PATTY SKINNER
Leopold.....	ROBERT HANSON
Footmen of the Marschallin.....	{ PAUL GUENTER, GEORGE TALLONE *ROBERT BRUCE MAC KAY *FREDERICK WILLIAMS

** San Francisco Opera debut*

A Scholar, A Flute Player, A Hairdresser, His Assistant,

A Widow of Noble Family, Four Waiters, Footmen

Couriers, Heyducks, Cook Boys, Guests, Musicians, Watchmen, Children, Various
Persons of Suspicious Appearance.

STAGE DIRECTOR

HERBERT GRAF

CONDUCTOR

GEORGE SEBASTIAN

CHORUS DIRECTOR

KURT HERBERT ADLER

TIME AND PLACE: In the Early Years of the Reign of Maria Theresa; Vienna

Act I: The Bedroom of the Marschallin

Act II: A Room in the House of Herr Faninal

Act III: A Room in an Inn

Because of copyright the story of the opera cannot be printed.

† **Popular Series Performance of "Der Rosenkavalier," October 18**

TICKETS FOR EXTRA PERFORMANCES
AT OPERA BOX OFFICE, CITY OF PARIS

Encores not permitted — Bell rings three minutes before curtain rises

Victory Brings Joy to Our Hearts

but war has left poverty and suffering to millions of innocent people.

Our Government has authorized the organization of the AMERICAN RELIEF FOR ITALY, Inc., to alleviate suffering among the people of Italy.

YOU CAN HELP by donating all kinds of used clothing for men, women and children. It must be clean and practical clothing, in good wearing condition. Food and medical supplies are also desperately needed, and are urgently solicited.

CONTRIBUTIONS should be sent to:

California Division American Relief for Italy, Inc.

678 Green Street
San Francisco 11, Calif.

or

401 Sunset Blvd.
Los Angeles 12, Calif.

if more convenient phone S.F. SUTTER 2631 or L.A. TRINITY 5491 and we will call for your contribution.

MEMBER AGENCY OF THE NATIONAL WAR FUND

QUALITY

Style . . . and a reputation
in the making of smart
Men's Clothing . . .

WILLIAMS AND BERG CO.

GENERAL ENGLISH TAILORS

110 SUTTER STREET FRENCH AMERICAN BANK BUILDING

Business eyes turn West—and widen!

Congestions of war, imposed upon our Western economy, serve usefully to "discover" the basic resources of the West, the capacity of the West to produce and manufacture, and the nearness of our Pacific Coast to the huge postwar markets surrounding the world's biggest waterway.

These facts, known here, now are being regarded with quickening appreciation elsewhere. Colored pins are being shifted west on boardroom wall maps in many a home office.

This Bank, for over eighty years associated with the sensible development of our Pacific Coast, offers two advantages to business and industry. First, our long-established offices in all three Pacific Coast states afford on-the-ground service fitted to each area. Second, our Foreign Exchange department is thoroughly familiar with market contacts throughout the Pacific Basin. For business with or on the Coast or through our ports into the Pacific, the established contacts and long experience of this Bank can be of definite value.

*Head Office: 400 CALIFORNIA STREET
Mission Branch: 16TH & JULIAN AVENUE*

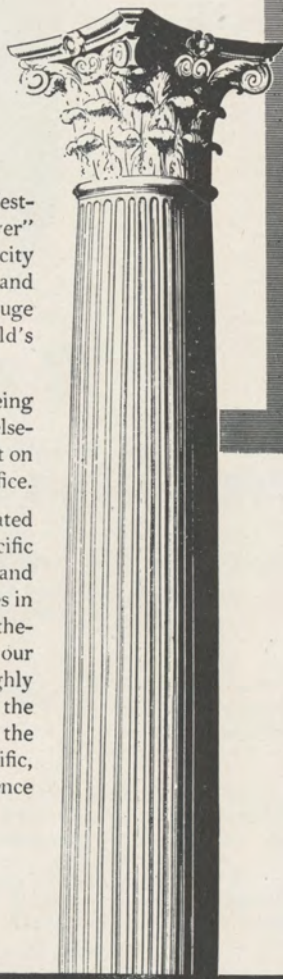
THE BANK OF CALIFORNIA

NATIONAL ASSOCIATION

Founded in 1864

Member Federal Deposit Insurance Corporation

SAN FRANCISCO • PORTLAND • SEATTLE • TACOMA





It Stands Alone

KORBEL BRUT IS **TOPS** IN AMERICAN CHAMPAGNE

Magazines which reach the most sophisticated audience in the United States unanimously give first place in American Champagnes to KORBEL BRUT
WE didn't say it first! THEY DID!

"THE BEST AMERICAN CHAMPAGNE to date is KORBEL BRUT. Our guess is anyone would think it was imported."
—Harper's Bazaar

"PROBABLY THE MOST CHAMPAGNE-LIKE domestic wine is KORBEL BRUT."
—Cue Magazine

"THE OUTSTANDING AMERICAN CHAMPAGNE to date is KORBEL BRUT."
—Town and Country

"EXTREMELY ENJOYABLE, bone-dry and clean-tasting."
—The New Yorker

"AMONG THE FEW FINE CALIFORNIA CHAMPAGNES IS KORBEL BRUT—a special cuvee which has been made as dry as the driest Champagnes for the English market."
—St. Regis, Peacock Alley, The Ambassador, Plaza En Passant, The Savoyard, The Ritz Carlton, The Hampshire, The Sherry-Netherlands, Pierrot

K O R B E L **BRUT** **ROUGE**
 SEC **PINK**

Distributed by

TRADERS DISTRIBUTING CO.
314 FRONT STREET, SAN FRANCISCO, CALIFORNIA

21 BRANDS, INC.
17 E. 52nd ST., NEW YORK CITY

OPERA BOX HOLDERS

Season 1945

MR. AND MRS. GEORGE WASHINGTON BAKER, JR.	MR. AND MRS. ARTHUR DALE KING
MRS. GEORGE EDWIN BENNETT	MRS. MARCUS S. KOSHLAND
MR. AND MRS. CHARLES R. BLYTH	MRS. SAMUEL KNIGHT
MR. AND MRS. JAMES PARKS BRADLEY	MRS. RICHARD MCCREERY
MR. AND MRS. JOHN DAVIS BRADLEY	MR. AND MRS. JUIILLARD McDONALD
MR. AND MRS. ROY BRONSON	MRS. FELIX MCGINNIS
MR. AND MRS. GEORGE T. CAMERON	MR. AND MRS. FREDERICK W. MCNEAR
MR. AND MRS. JOHN B. CELLA	MR. AND MRS. GAETANO MEROLA
MR. AND MRS. WILLIAM W. CROCKER	MR. AND MRS. C. O. G. MILLER
MRS. FRANK P. DEERING	MRS. EPPS J. MILLER
MR. AND MRS. SIDNEY M. EHRMAN	MR. AND MRS. KENNETH MONTEAGLE
MR. AND MRS. MORTIMER FLEISHHACKER	MRS. RYER NIXON
DR. AND MRS. FRANK R. GIRARD	MRS. ARLINE M. ROLKIN
MR. AND MRS. JOSEPH T. GRACE	MRS. HENRY POTTER RUSSELL
MRS. CRESCENT PORTER HALE	SAN FRANCISCO OPERA GUILD
MRS. PRENTIS COBB HALE	JUDGE AND MRS. M. C. SLOSS
MR. AND MRS. CHARLES L. HARNEY	MR. SIGMUND STERN
MRS. I. W. HELLMAN	MR. AND MRS. NION R. TUCKER
MR. AND MRS. CLARENCE LORAN JOHNSTON	MR. AND MRS. KARL C. WEBER

IMPORTANT

Change in Opera Dates

"DIE WALKURE" will be given Tuesday, Oct. 9,
Instead of Friday, Oct. 12

"BORIS GODOUNOFF" will be given Friday, Oct. 12,
Instead of Tuesday, Oct. 9

Ticket holders will please be guided by the name of the opera
instead of the date.

FERRARI  **NICOLAUS**
AND FORMER FIRM OF  **TRAINER & PARSONS**

Dispensing Opticians

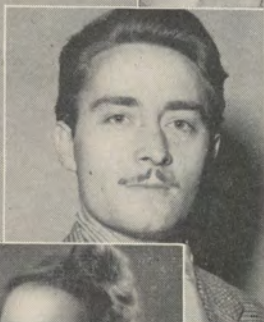
**444 POST
SAN FRANCISCO**

PISANI PRINTING & PUBLISHING CO.

Fine Printing



700 MONTGOMERY STREET • PHONE SUtter 4772
SAN FRANCISCO



CLARAME TURNER

ROBERT MILLS

KATHLEEN LAWLOR

CHARLES GOODWIN

EVELYN CORVELLO

GEORGE TALLONE

MURIEL DEMERS

HERBERT NYSTROM

LORRAINE CALCAGNO

ROBIN NELSON

BRITTA ANDERSON

Artists of the San Francisco OPERA COMPANY



Atop Nob Hill

ZEBRA ROOM

COCKTAILS
LUNCH * DINNER

An atmosphere of cultured intimacy where
meals are better and enjoyment is enhanced
by NELLE CALLAHAN at the
Hammond Organ



HUNTINGTON HOTEL

NOB HILL

1075 CALIFORNIA

EUGENE N. FRITZ, Managing Owner

COLUMBIA CONCERTS, INC.

Presents

"GREAT NAMES IN MUSIC"



Appearing 1945 San Francisco Opera Season

LICIA ALBANESE
LORENZO ALVARY
CHARLES KULLMAN

MARGARET HARSHAW
LILY PONS
RISE STEVENS



Appearing San Francisco Opera Concert Series, 1945-1946

HEIFETZ
JUSSI BJOERLING
JENNIE TOUREL
ROSARIO and ANTONIO

RUDOLF SERKIN
YEHUDI MENUHIN
PAUL ROBESON
HELEN TRAUBEL



COLUMBIA CONCERTS, Inc., 113 West 57th Street, New York

San Francisco Representative, PAUL POSZ, War Memorial Opera House

Los Angeles Representative, L. E. BEHYMER, 415 Auditorium Building

SAN FRANCISCO TRADITION

BEFORE THE OPERA

...Dine in the exquisite Garden Court

AFTER THE OPERA

...Dance in the Rose Room to the music of

DEL COURTNEY

and his orchestra



The Palace Hotel

EDMOND A. RIEDER, General Manager

FREE

Opera Broadcast Program

☆ The San Francisco Opera Company's 23rd Annual Season is being broadcast over radio station KFRC.

To better enjoy the operas you are unable to attend, Safeway has prepared a 52-page souvenir broadcast program.

For your free Opera Program write Post Office Box 2189, San Francisco 26, California.



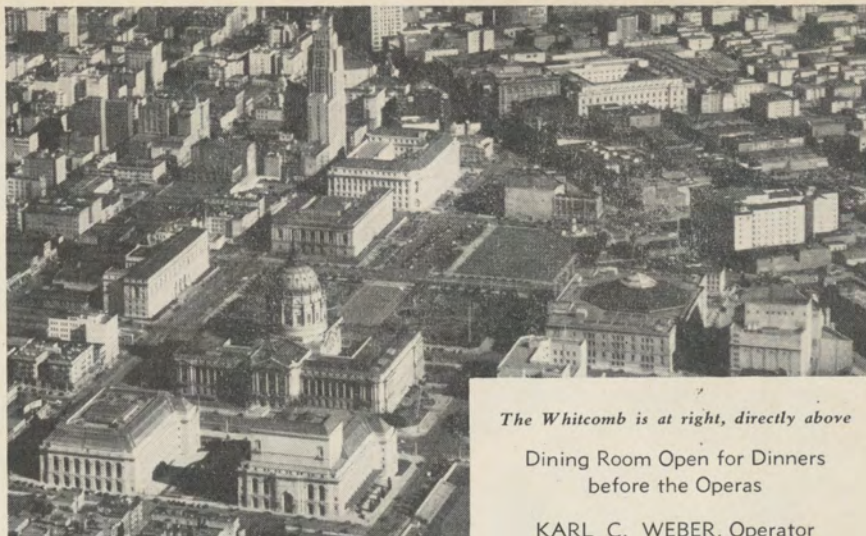
JOSEPH TISSIER
 ROSE AGNES HERSCH
 EVARISTO ALIBERTINI
 PAUL GUENTER

ELMA HEITMAN
 MARILYNN KING
 BIANCA BRUNI
 FREDERIC WILLIAMS

BETTIE SANDERSON
 AUGUSTO LORENZO
 BENJAMIN MARTIN
 ROBERT BRUCE MACKAY

LEO GALT
 MAX LORENZINI
 W. VERNON SANDERS
 PAUL LEIBER

Artists of the San Francisco OPERA COMPANY



The Whitcomb is at right, directly above

Dining Room Open for Dinners
before the Operas

KARL C. WEBER, Operator

SAN FRANCISCO'S LEADING HOTEL AT THE CIVIC CENTER

HOTEL WHITCOMB

*Plan Today for
Tomorrow*

"PAY CASH and SAVE"

WEINSTEIN CO.

• 1041 MARKET ST.

• 100 MARKET ST. • 1620 POLK ST.

• 615 MARKET ST. • 119 POST ST.

HOW TO PRONOUNCE THEIR NAMES

LICIA ALBANESE	<i>Lee'-chee-ah Ahl-bah-nay'-zay</i>	HERBERT JANSSEN	<i>Herbert Yahn'-senn</i>
LORENZO ALVARY	<i>Lorenzo Ahl-vah'ry</i>	RAOUL JOBIN	<i>Lotte Lay'-mahn</i>
ARMANDO AGNINI	<i>Ar-mahn'-dow Ah-nee'nee</i>	BRUNO LANDI	<i>Brewno Lahn'-dee</i>
SALVATORE BACCALONI	<i>Sahl-vah-tow'-ray Bach-ah-low'-nee</i>	LOTTE LEHMAN	<i>Rah-ool Zhoh-ban'</i>
ETIENNE BARONE	<i>Et-yehn Bah-row'-nay</i>	LAURITZ MELCHIOR	<i>Lauritz Mell'-kee-or</i>
FRANCES CASTELLANI	<i>Frances Kah-stay-lahn'-ee</i>	GAETANO MEROLA	<i>Gah-yay-tahn'-oh Mare'-oh-lah</i>
GEORGE CEHANOVSKY	<i>George Chay-han-off'-skee</i>	IVAN PETROFF	<i>Ee-vahn Pet-roff</i>
VIVIAN DELLA CHIESA	<i>Vivian Dell-lah-Kee-ay'-zah</i>	EZIO PINZA	<i>Et'-see-oh Peen'-zah</i>
OTELLO CERONI	<i>Otello Chay-row'-nee</i>	LILY PONS	<i>Lee-lee Pawnce</i>
ANTONIO DELL'OREFICE	<i>Antonio Dell-oh-reff'-ee-chay</i>	ANITA RAGUSA	<i>Anita Rah-goo'-sah</i>
ALESSIO DE PAOLIS	<i>Ah-less'-see-oh Deh Pah'-oh-leece</i>	HILDE REGGIANI	<i>Hill-day Rah-jah'-nee</i>
LILY DJANEL	<i>Lee-lee Zhan-nell</i>	KARL RIEDEL	<i>Karl Ree-dell</i>
HERTA GLAZ	<i>Hair-tah Glahz</i>	STELLA ROMAN	<i>Stay-lah Row-mahn'</i>
FREDERIC JAGEL	<i>Frederick Yay-gel</i>	ELEANOR STEBER	<i>Eleanor Stee'-burr</i>
		RISE STEVENS	<i>Ree'-suh Stevens</i>
		HELEN TRAUBEL	<i>Helen Trah'-oo-bell</i>
		FRANCESCO VALENTINO	<i>Francesco Vah-lenn-teen'-oh</i>

BELFAST

★
 Manufactured
 by the makers
 of
BELFAST
 Dry
GINGER ALE
 Famous
 Since 1877



*Sparkling
 Water*

PURE, wholesome and delightful to the taste, Belfast Sparkling Water is the ideal table beverage... it is *supreme* among the better mixers — heightens the flavor of other beverages and gives longer-lasting sparkle in the glass.

BELFAST BEVERAGE CO.

820 Pacific Avenue

DOuglas 0547

San Francisco

★



Gantner ***Swimsuits***

***San Francisco's
proudest and
America's finest***

Top . . . Black Magic Nylon
Sarong . . . very light and quick
drying! One of many beautiful
Gantner styles which have be-
come famous.

GANTNER & MATTERN CO.

San Francisco • Chicago • New York

KQW and CBS

present

PATRICE MUNSEL

. . . lovely young soprano of
the Metropolitan Opera . . .

on

THE FAMILY HOUR

every Sunday

2:00 - 2:30 p.m.

KQW

The Columbia Station
for the San Francisco
Bay Area

740 on the dial

VISIT...

The Cocktail Lounge
of Distinctive
Atmosphere

**CARDINAL
RICHELIEU
ROOM**

Van Ness at Geary
"Just a Short Walk"



Milan Lambert
at the Organ

RICHELIEU HOTEL

Leopold Lerner, Manager

GUARANTOR MEMBERS

of the

SAN FRANCISCO OPERA ASSOCIATION

Mrs. L. C. Abbott
 S. L. Abbot
 C. Edgar Adams
 Mrs. C. R. Adams
 Albert N. Ades
 Mrs. John S. Adler
 Mrs. Wallace Alexander
 Lucy H. Allyne
 T. E. Ambrose
 Thelma Anderson
 F. W. Armour
 Lawrence H. Arnstein
 Edward R. Bacon
 Mr. and Mrs. Frazer Bailey
 Elsa M. Baker
 Mr. and Mrs. George
 Washington Baker, Jr.
 Baldwin Piano Co.
 A. R. Baldwin
 B. A. Banker
 Mrs. John Thomas Barnett
 Peter Barnett
 J. F. Barrett
 Mrs. Edward F. Barron
 Irving Bartel
 Harriett Bathgate
 Dominic A. Bazzanella
 Mr. and Mrs. R. S. Beall
 Mr. and Mrs. F. N. Belgrano, Jr.
 Melvin Belli
 David Benioff
 Mrs. George Edwin Bennett
 Mrs. Charles H. Bentley
 Mrs. Walter H. Bentley
 Franklin L. Besley
 Elsie A. Best
 Dr. Tholow Binkley
 Mrs. James H. Bishop
 Newton Bissingler
 W. Harry Blatchly
 Louis Bloch

Mrs. Arthur L. Bloomfield
 Mr. and Mrs. Charles R. Blyth
 Mrs. Angus Gordon Boggs
 Mrs. Robert C. Bolton
 Mrs. F. E. Boyd
 Louise A. Boyd
 Mr. and Mrs. James Parks
 Bradley
 Mr. and Mrs. John Davis Bradley
 Mr. and Mrs. Walter C. Brauns
 G. Temple Bridgman
 Mrs. William Ellery Briggs
 Roy A. Bronson
 Mrs. John F. Brooke
 Julia Fox Brooke
 George W. Brooks
 Dr. LeRoy Brooks
 Arthur M. Brown, Jr.
 J. Arthur Brown
 James A. Brown
 Mr. and Mrs. Louis C. Brown
 Ralph Brown
 Walter D. Brown
 Mrs. E. E. Brownell
 Starr Bruce
 Frank J. Brucato
 Frank E. Buck
 Leonard W. Buck
 Thomas Buck
 Mr. and Mrs. F. Neil Buckley
 Daniel W. Burbank
 Mrs. Prentis T. Burtis
 Dr. and Mrs. Edmund Butler
 Mrs. Felix Butte
 Mrs. John R. Cahill
 Dr. William Otis Callaway
 Mr. and Mrs. George T. Cameron
 Lillian Campbell
 Estelle Carpenter
 Craig Carrier
 Kenneth Cassidy

Augustine Cazenave
 Mr. and Mrs. John B. Cella
 Selah Chamberlain, Jr.
 E. M. Chandler
 Drew Chidester
 Charles A. Cristin
 John J. Cimino
 Mrs. Baylies V. Clark
 Maud H. Clark
 S. G. Clark
 Mrs. Tobin Clark
 Capt. and Mrs. Robert A. Clarke
 Mrs. John P. Coghlan
 Mr. and Mrs. George D. Cohn
 Mrs. Max M. Cohn
 Mrs. Colbert Coldwell
 Persis H. Coleman
 H. D. Collier
 Mr. and Mrs. Jesse C. Colman
 J. J. Coney
 Mary R. Conlin
 Dr. and Mrs. Frederick C. Cordes
 Arthur S. Crites
 Carrie Bell Crocker
 Mr. and Mrs. W. W. Crocker
 George E. Crothers
 Thomas B. Crowley
 Ralph K. Davies
 Alvin Davis
 Mr. and Mrs. Stuart Davis
 Florence E. Dean
 Mrs. Charles J. Deering
 Mrs. Frank P. Deering
 Mrs. George deLatour
 Dr. Joseph Del Genovese
 Mrs. Walter A. de Martini
 Frank H. Denman
 John Michael Desch
 Richard Deterf
 Mrs. Robert T. Devlin
 Mrs. B. J. Dietrich



Orchids

from Podesta & Baldocchi,
 America's Most Famous
 Florist, make any occasion
 more festive.

Podesta & Baldocchi

America's Most Famous Florists

Telephone: SUTTER 6200

224 GRANT AVENUE, SAN FRANCISCO

★ ★ ★ ★ ★ ★ ★ ★



ATTL HARP SCHOOL

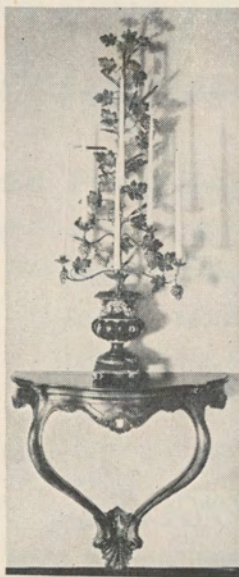
*KAJETAN ATTL, formerly 28 years First Harpist with the
San Francisco Symphony and Opera Association*

INSTRUCTION IN HARP
HARPS — MUSIC AND STRINGS

1030 BUSH STREET, SAN FRANCISCO

PHONE: ORdWAY 6367

Artist Students available for engagements



BUY WAR BONDS

★

Fine Antiques

★

*Excellent
Craftsmanship*

★

K. H. LENGFELD

Interior Decorator

★

1409 SUTTER STREET, SAN FRANCISCO

GUARANTOR MEMBERS—Continued

- | | | |
|---|---|--|
| <p>Mrs. L. W. Dinkelspiel
 Mrs. Samuel L. Dinkelspiel
 N. S. Dodge
 Mrs. Robert Dollar II
 Mrs. Leo Domb
 O. Dewey Donnell, Jr.
 Katharine Donohoe
 Mrs. F. A. Dorn
 D. C. Dorward
 F. M. Dorward
 R. E. Doyle
 Elsie L. Dunbar
 Mrs. Frank H. Dunne
 Mrs. Charles Dunphy
 Mrs. Dunne Dutton
 Capt. and Mrs. James J. Dwyer, Jr.
 Dr. and Mrs. George Ebricht
 Dr. Muriel E. Edwards
 Albert L. Ehrman
 Alexis L. Ehrman, Jr.
 Mrs. Alfred Ehrman
 Mr. and Mrs. Sidney M. Ehrman
 Wilfred Eldred
 H. A. Ellis
 John W. Elwood
 Mark C. Elworthy
 G. Epstein
 Mrs. Milton H. Esberg
 Milton H. Esberg, Jr.
 L. Ets-Hokin
 Dr. and Mrs. Harold K. Faber
 F. C. Fabry
 Arthur C. Farlow
 Alfred Fasani
 Lionel B. Feigenbaum
 James E. Fickett
 Mrs. Marshall Fisher
 James Fisher-Northrop
 Carl Fieschler
 Mr. and Mrs. Mortimer Fleishacker
 John F. Forbes
 Mr. and Mrs. Edward T. Ford
 Francis F. Forsell
 Mr. and Mrs. T. G. Franck
 Mrs. Jennie S. Frank
 Lt. and Mrs. Richard L. Frank
 Dr. Charles L. Freytag
 Mr. William Fries
 Kenneth E. Fultz-Vayette
 Nelly Gaffney
 Mr. and Mrs. Maurice A. Gale
 L. Galtie
 Gordon L. Gates
 Mr. and Mrs. Henry Gede, Jr.
 Dr. Ernst Gehrels
 Alvin Gerlack
 Mark L. Gerstle
 Mrs. D. Ghirardelli
 D. Lyle Ghirardelli
 Dr. Arthur Collis Gibson</p> | <p>Maud M. Gibson
 George B. Gillson
 Dr. and Mrs. Frank R. Girard
 Mr. and Mrs. Harry F. Gittings, Jr.
 J. Harry Goff
 Maurice L. Goldman
 Mr. and Mrs. Louis S. Goldstein
 Lutie D. Goldstein
 Jack Gomperts
 Mrs. Thomas Gonda
 Lorraine C. Goodman
 Dr. William A. Gorman
 Mr. and Mrs. Joseph T. Grace
 Mrs. Joseph D. Grant
 Mrs. Richard Gray
 Mrs. Maurice S. Greenberg
 Mr. and Mrs. Stuart N. Greenberg
 Mrs. F. S. Greenlee
 Mrs. Hayes Griffin
 Mark E. Guerin
 Mr. and Mrs. Berthold Guggenlime
 Gustav G. Gumpel
 Mrs. Alfred S. Gunn
 Madeleine Haas
 Mrs. Crescent Porter Hale
 Marshal Hale
 Mrs. Prentis Cobb Hale
 Prentis C. Hale, Jr.
 R. B. Hale
 Herbert E. Hall
 Eminel P. Halsted
 Marshall S. Hanrahan
 Mr. R. C. Hansen
 Mrs. Robert D. Harden
 W. G. Harmon
 Mr. and Mrs. Charles L. Harney
 Irving F. Harris
 Gregory A. Harrison
 Maurice E. Harrison
 Mrs. Henry H. Hart
 S. M. Haslett
 Mrs. Russell P. Hastings
 Mrs. Juanita O. Hatch
 Mr. and Mrs. Elystus Hayes
 Mrs. Timothy Hayes
 A. W. Hazen
 Mrs. E. S. Heller
 Mr. and Mrs. Walter D. Heller
 Walter S. Heller
 Mrs. I. W. Hellman
 Mrs. Robert Henderson
 Dr. and Mrs. Ernest E. Hessing
 Mr. and Mrs. Stanley Hiller
 Mr. and Mrs. Leslie W. Hills
 Harry H. Hilp
 J. H. Hinrichsen
 Barnard J. Hirsch
 George H. Holt
 Osgood Hooker
 Mr. and Mrs. L. Arundel Hopkins
 Mrs. Samuel Hopkins</p> | <p>Robert A. Hornby
 Mrs. H. A. Hornble
 Kurt Huber
 Robert Hulbert
 Dr. Harvey S. Hunsberger
 Marian Huntington
 Mrs. William Hyman
 Mrs. James Irvine
 Dr. S. Nicholas Jacobs
 R. J. Jansen
 Mr. and Mrs. Louis Jefferys
 Otto Jeidels
 Mrs. Charles A. Jewel
 Mr. and Mrs. Clarence Lorán Johnston
 Ector R. Johnson
 Mrs. Sophie Johnson
 Major General Kenyon A. Joyce
 Mrs. Chester W. Judson
 Jean Juillard
 Mrs. Ira Kahn
 Mr. and Mrs. Samuel Kahn
 Henry J. Kaiser
 Walter F. Kaplan
 S. Kauffman
 Mr. and Mrs. Edward D. Keil
 H. C. Kelsey
 Charles Kendrick
 Easton Kent
 Mr. and Mrs. Marion H. Kent
 Mr. and Mrs. Arthur Dale King
 Percy L. King
 Dr. John J. Kingston
 John E. Kinney
 R. W. Kinney
 Mrs. Josephine R. Kleinjung
 Paul L. Kleinsorge
 Mrs. William E. Kleinsorge
 Robert L. Kline
 Mrs. Samuel Knight
 Caroline Korbelt
 Elsa R. Korbelt
 Mrs. Jesse Koshland
 Mrs. Marcus S. Koshland
 Frederick J. Koster
 Mrs. C. M. Kretchmer
 Dr. Henry M. Kreutzmann
 Mr. and Mrs. E. V. Krick
 Gus Kroesen
 Theodore Kroesen
 Esther Kuenz
 Gustave Lachman
 Mrs. Albert G. Lang
 Mrs. Philip V. H. Lansdale
 Mrs. Charles G. Lathrop
 Mrs. H. M. Lawrence
 L. H. Lazarus
 Edwin Leitch
 Leopold Lerner
 John A. Lesoine
 Mr. and Mrs. Paul Levey
 Robert L. Levin</p> |
|---|---|--|

CLAIRE BROWN

278 POST ST.

NEW HATS FOR FALL

ADELE MORAN

INFANTS AND CHILDREN'S WEAR

EXCLUSIVELY

Formerly with H. Liebes & Co.

18 Tillman Place

Next door to Temple Bar Tearoom

THE SAN FRANCISCO BALLET GUILD
MRS. JULLIARD McDONALD, *Pres.*

Announces

San Francisco Ballet

WILLIAM CHRISTENSEN
Artistic Director

HAROLD CHRISTENSEN
Ballet School Director

REYNOLD WIGGINS
Business Manager

in their

Third Annual Holiday Ballet Season

Children's Christmas Matinee
SUNDAY, DEC. 23

Gala Holiday Evenings

WEDNESDAY - - - - - DEC. 26

THURSDAY - - - - - DEC. 27

WAR MEMORIAL OPERA HOUSE

STOCKTON - - - - - FRIDAY, DEC. 28

SACRAMENTO - - - - - SATURDAY, DEC. 29

OAKLAND - - - - - SUNDAY, DEC. 30

The Ballet leaves for their eastern tour on Feb. 1st
returning May 1st

for the

Spring Ballet Homecoming (Date to be announced)

Tickets for Holiday Ballet On Sale Normandy Lane Box Office. EX 8585

GUARANTOR MEMBERS—Continued

- J. B. Levison
 Azro N. Lewis
 Mrs. A. J. Lewthwaite
 Mrs. Samuel Lilienthal
 P. N. Lilienthal
 Mr. and Mrs. William J. Lindenberger
 F. L. Lipman
 Mrs. Norman B. Livermore
 Lawrence Livingston
 James K. Lohead
 George D. Lodvick
 J. W. Longie
 Louis R. Lurie
 Carl D. Lovotti
 James Rowland Lowe
 Mrs. A. D. Lowengart
 Mrs. A. J. Lowrey
 Edmunds Lyman
 Edna May Lyon
 James W. McAlister
 Mr. T. R. McCarron
 Mr. and Mrs. A. M. McCarty
 Albert Connell McCary
 Mrs. Wm. H. McCormick
 Mrs. Richard S. McCreery
 Mr. and Mrs. Juilliard McDonald
 Mrs. Mark L. McDonald
 Mrs. John McGaw
 Mrs. Felix S. McGinnis
 Mrs. Lacy Maclean
 Mrs. Alfred McLaughlin
 Mrs. Clarissa McMahon
 Dean Brown McNealy
 Mr. and Mrs. F. W. McNear
 Mrs. George P. McNear
 Mr. and Mrs. Victor Maas
 Mrs. A. MacDonald
 Mr. and Mrs. John B. Mackinlay
 Marshall P. Madison
 Mr. and Mrs. Grover A. Magnin
 F. Bruce Maiden
 Mrs. J. W. Mailliard, Jr.
 Mr. and Mrs. Joseph A. Mancini
 A. F. Manspeaker
 George M. Mardikian
 Dorothy S. Marion
 Mr. and Mrs. Randolph Wyatt Martenet
 Edward Martin
 A. C. Mattei
 Mrs. Jack Maxfield
 Dr. Alice F. Maxwell
 Mr. and Mrs. Harry O. Maxwell
 Evelyn Mendessolle
 Mr. and Mrs. Gaetano Merola
 Mrs. H. C. Merritt, Jr.
 Mrs. Julian J. Meyer
 Olga M. Meyer
 Merwin A. Meyers
 Mr. and Mrs. Van Vissing Midgely
 Mr. and Mrs. C. O. G. Miller
 Mrs. Epps J. Miller
 Mrs. Maxwell C. Milton
 Henrietta Moffat
 Mr. and Mrs. Edward F. Moffatt
 James K. Moffitt
 Charles W. Moisson
 Mario Mondin
 Mr. and Mrs. Kenneth Monteaque
 Mr. and Mrs. Paige Monteaque
 Frederick H. Montgomery
 Mrs. Joseph A. Moore
 A. C. Morici
 Marion Morris
 Mrs. H. D. Mustenson
 Guido J. Musto
 Laura Musto
 Marion Naffziger
 E. M. Nagel
 Mr. and Mrs. Ralph R. Nelson
 Julia M. Neppert
 Hugo D. Newhouse
 Dr. and Mrs. Alfred Newman
 Richard C. Newmeyer
 John Francis Neylan
 George W. Nickel
 Mrs. Ryer Nixon
 Harry Ogilvie
 Carl F. Ohliger
 Benjamin J. Older
 Mr. and Mrs. Edwin Letts Oliver
 George R. Orme
 Dr. B. H. Page
 Charles R. Page
 Mrs. S. H. Palmer
 T. B. Palmer
 Lorriene Parisen
 Mrs. Henry Passow
 Dr. Sadie D. Patek
 Gertrude Pauson
 Mrs. Oscar Butler Perry
 Howard Peterson
 George W. Phillips, Jr.
 Mrs. Margaret A. Phillips
 Mrs. Herman Phleger
 Tecla Pieper
 Mr. and Mrs. G. Pisani
 Mrs. H. D. Pischel
 A. Poladian
 Mrs. Paul Posz
 Mrs. Ashton H. Potter
 Mr. and Mrs. Stanley Powell
 Colonel John Sedgwick Pratt
 Walter G. Preddy
 Dr. Edward Purcell
 Mr. and Mrs. John B. Quigley
 Mrs. Carl Raiss
 Mrs. Lloyd F. Reighley
 Dr. Ralph A. Reynolds
 Neville J. Rich
 H. A. Richardson
 Mrs. H. W. Richards
 Mrs. Robert Ritchie
 Harrison S. Robinson
 Dr. Frank H. Rodin
 Mrs. N. Rogers
 Arline Miller Rolkin
 Colonel Robert A. Roos
 John N. Rosekrans
 Leland S. Rosener
 Alexander Ross
 Donald L. Ross
 Edmund A. Rossi
 Mrs. Angela Wing Roth
 Mrs. William P. Roth
 John Rothschild
 Ken F. Royce
 Mohr M. Rubin
 Frank K. Runyon
 Mrs. A. S. Russell
 Michael J. Ryan
 Charles B. Sanders
 Robert H. Scanlon
 Carl Schaubye
 Elise Schilling
 Dr. Walter Schilling
 George B. Schirmer
 Dr. G. D. Schoonmaker
 Mr. and Mrs. Albert E. Schwabacher
 Mrs. Frank Schwabacher
 James H. Schwabacher
 Mrs. Louis A. Schwabacher
 Mr. and Mrs. Harry S. Scott
 Dr. Henry W. Scott
 Marcella C. Sedgley
 Albert Seligson
 Mr. and Mrs. R. H. Shainwald
 Mr. and Mrs. R. S. Shainwald
 Mrs. Nelson T. Shaw
 Fred R. Sherman
 Mr. and Mrs. Ray Simonds
 R. O. Simon
 Mrs. Norman J. Sinclair
 Mrs. Edgar Sinton
 Genevieve Six
 Charles W. Slack
 Mrs. Leon Sloss
 Judge and Mrs. M. C. Sloss
 Stanley C. Smallwood
 Edward J. Smiddy
 Mr. and Mrs. Charles Watt Smith
 DeLancey Smith
 Jack Soderlund
 George Willard Somers
 Mr. and Mrs. Herbert L. Sommer
 Fred H. Spiess
 G. E. B. Stanwood
 G. A. Starkweather
 Glen C. Stater
 Mrs. Harold S. Stein
 Ralph J. A. Stern
 Mrs. Sigmund Stern
 Claude Albon Stichel
 Dr. John Philip Strickler
 John Robert Strickler
 Benka Strickler
 Lieut. C. W. Sudderth
 Walter H. Sullivan
 E. J. Sultan
 Bert O. Summers
 Mrs. Alfred Suro
 Louis Sutter
 Ernest J. Sweetland
 Mrs. Andrew B. Talbot
 Dr. W. R. Taylor
 Charles Tesseyman
 George C. Thierbach
 B. Wade Thompson
 Mrs. Myron I. Thomas
 William Timson
 C. R. Tobin
 Mrs. Edward Topham, Jr.
 Mr. and Mrs. Ernest J. Torregano
 Dr. and Mrs. H. G. Trimble
 Mrs. Alfred Tubbs
 Mr. and Mrs. Nion R. Tucker
 Mr. and Mrs. Daniel Volkman
 Dr. E. P. M. Von Gehren
 Mrs. Norman L. Waggoner
 George Wagner
 Mrs. Willis J. Walker
 Morton Wallace
 Whitney Warren
 Mr. and Mrs. Karl C. Weber
 Michel D. Weill
 Lieut. Comdr. Nat. S. West
 Dr. and Mrs. H. M. Weyrauch
 Anna Louise White
 Bonnie Whitcomb
 Lieut. and Mrs. Fred Whitman
 William A. P. White
 George B. White
 Mrs. Millard C. White
 Mrs. Frederick A. Wickett
 Robert L. Wiel
 Mr. and Mrs. Brayton Wilbur
 Charles T. Williams
 Mrs. Selden Williams
 Stephen Williams
 Lt. W. F. Willmette
 Mrs. J. L. Wolf
 Mr. and Mrs. Harold L. Wright
 Barbara Young
 Dwayne G. Young
 Mrs. V. Zaruba
 J. D. Zellerbach
 Edgar T. Zook
 Kenneth C. Zwerin

BUY WAR BONDS AND STAMPS



ALBERT DAINI

Distinctive

**DRAPERIES
UPHOLSTERING**

This table as illustrated
is one of our own creations
made in our own shop.

1529 PINE STREET NEAR POLK • ORDWAY 6316

RUSSIAN *Atmosphere*

RUSSIAN *Music*

RUSSIAN *Food*

BALALAIKA

Russian Restaurant

960 Bush St., S.F.
Tel. OR. 8976

Cocktails · Dinners
Gypsy Music

D. Dee, Manager



Alioto's FISH GROTTO

Phil Rubino
Manager

STEAKS - CHOPS

ALSO SERVED



No. 8 Fisherman's Wharf
San Francisco

Open till 2 a.m.
Saturdays 3 a.m.

SAN FRANCISCO OPERA GUILD, INC.

MRS. ROGER D. LAPHAM, *Chairman*

MRS. JOHN PHILLIP COGHAN, JR., *Vice-Chairman*

MRS. STANLEY POWELL, *Vice-Chairman*

MRS. FREDERICK WHITMAN, *Secretary*

MR. JERD SULLIVAN, *Treasurer*

Members

- Mrs. Lloyd S. Ackerman
Mr. and Mrs. Arthur C. Adams
Mr. and Mrs. C. Edgar Adams
Mrs. John S. Adler
Mrs. Alexander Albert
Mrs. Douglas Alexander
Mrs. Wallace M. Alexander
Miss Edith W. Allyne
Miss Lucy H. Allyne
Mrs. R. M. Alvord
Mr. T. E. Ambrose
Mrs. Berrien Anderson
Miss Margaret Andrews
Mrs. Leonora Wood Armsby
Miss Lillian Armsby
Mr. Noel T. Arnold
Dr. Charlotte C. Baer
Mrs. Horace S. Baker
Mrs. George Washington Baker, Jr.
Mrs. William P. Baker
Mrs. Edward F. Barron
Mrs. R. M. Barthold
Mrs. Edward Otis Bartlett
Mrs. F. Bauden
Mrs. Samuel Bauer
Mrs. Charles Beardasley
Mr. S. D. Bechtel
Mrs. Julian Palmer Beek
Dr. Bernard C. Begley
Mrs. Reed J. Bekins
Mr. and Mrs. F. N. Belgrano, Jr.
Mrs. George Edwin Bennett
Mrs. G. Grace Benoist
Mrs. Charles H. Bentley
Mrs. Walter H. Bentley
Miss Jessie E. Benton
Mrs. Dikrian M. Berberian
Mrs. E. Bianco
Dr. and Mrs. Tholow Binkley
Mrs. James Arthur Bishop
Mrs. James Hall Bishop
Mrs. Charles N. Black
Miss Jennie M. Blair
Miss Phyllis Bliss
Mr. Louis Bloch
Miss Ruth V. Bloch
Mr. and Mrs. Charles R. Blyth
Mrs. Angus Gordon Boggs
Mr. and Mrs. Harold W. Bonner
Mrs. M. A. Bowen
Mrs. F. H. Bowles
Miss Louise A. Boyd
Miss Nina Boyle
Mrs. James Parks Bradley
Mrs. John D. Bradley
Mrs. W. C. Brauns
Mrs. A. F. Brav
Mrs. John N. Breeden
Miss Marie Brewer
Mrs. William Briggs
Mrs. L. H. Brinck
Miss Bogardus Brodt
Mrs. Julia Fox Brooke
Mr. Arthur M. Brown, Jr.
Mrs. Cabot Brown
Mrs. Hillver Brown
Mr. and Mrs. James Brown
Mrs. Walter D. Brown
Dr. Walter H. Brown
Mr. Frank J. Brucato
Mrs. Starr Bruce
Mr. Starr Bruce
Mr. Leo Bruck
Mrs. B. J. Brun
Dr. Edward John Buckley
Mrs. Edward J. Buckley
Mr. and Mrs. F. Neil Buckley
Mrs. Edna W. Buckwalter
Mrs. William J. Bultmann
Mrs. Robert B. Burroughs
Mrs. Arthur B. Cahill
Mr. Lewis Callaghan
Dolores Calles
Dr. William Otis Calloway
Mr. George T. Cameron
Major C. J. Carey
Mr. Russell Carpenter
Mrs. N. Casenave
Mrs. John Casserly
Mrs. A. L. Chickering
Mr. Drew Chidester
Madame Clara
Mrs. Tobin Clark
Mr. R. A. Cleaveland
Mr. Newton Booth Coghlan
Mr. John P. Coghlan
Mrs. John P. Coghlan, Jr.
Mrs. Betty Cohn
Mrs. Max Cohn
Mrs. Colbert Coldwell
Miss Persis H. Coleman
Mr. and Mrs. Waldo S. Coleman
Mr. H. D. Collier
Mrs. Jesse C. Colman
Mr. Joseph J. Coney
Miss Mary R. Conlin
Mrs. W. B. Cope
Mrs. B. Hardin Corbin
Dr. and Mrs. Frederick C. Cordes
Miss Mary Coward
Miss Mona Crellin
Mr. Templeton Crocker
Mr. William W. Crocker
Judge George E. Crothers
Mrs. John D. Crummey
Mrs. Emile F. Cuenin
Mrs. Leon Cuenin
Miss Peggy Cunningham
Miss Martha Curtis
Mr. and Mrs. O. K. Cushing
Mrs. Walter R. Cusick
Mrs. Chester Dahl
Mrs. Marie Hicks Davidson
Miss Florence Dean
Mrs. Charles J. Deering
Mrs. Frank P. Deering
Mrs. Georges deLatour
Mrs. S. T. DeLee
Mrs. Arthur J. DeLormier
Mr. Frank H. Denman
Mr. and Mrs. John Michael Desch
Mrs. Donald Dickey
Mrs. B. J. Dietrich
Mrs. Lloyd W. Dinkelspiel
Mrs. Samuel W. Dinkelspiel
Mr. and Mrs. Dewey Donnell
Miss Katharine Donohoe
Mrs. Warrington Dorst
Mrs. Paul M. Downing
Mrs. Frank B. Dray
Mrs. H. B. Drescher
Mrs. Lambert Dunbar
Mrs. Charles Dunpy
Mrs. Dunn Dutton
Mrs. Charles R. Eaton
Dr. Muriel E. Edwards
Mr. C. Wesley Edwards
Mr. Philip Ehrlich
Mrs. Alfred Ehrman
Mrs. Sidney Ehrman
Miss Lucile Eising
Miss Milton W. Ewes
Mrs. Marian W. Ewes
Mrs. Harold E. Faber
Mr. Lionel B. Feigenbaum
Mrs. Walter Filer
Mrs. Marshall Fisher
Mrs. R. M. Fitzgerald
Mrs. William M. Fitzhugh
Mr. Charles Flammer
Mrs. Herbert Fleishhacker, Jr.
Mrs. Mortimer Fleishhacker, Jr.
Mrs. James L. Flood
Mrs. B. C. Flood
Mrs. John F. Forbes
Mrs. Bernard W. Ford
Mr. and Mrs. Edward T. Ford
Mrs. W. Parmer Fuller, Jr.
Mrs. W. Parmer Fuller III
Mrs. Reed Funsten
Mr. Angelo Fusco
Mrs. Nellie Gaffney
Mrs. Vallojo Gantner
Mrs. Alfred Ghirardelli
Mr. D. Lyle Ghirardelli
Dr. and Mrs. Thomas A. Gibson
Miss Amelie Gier
Mrs. Frank Girard
Dr. Frank Girard
Mrs. Harry F. Gittings, Jr.
Mrs. J. H. Glide
Mrs. Henry Goldstein
Miss Lutie Goldstein
Mrs. A. H. Goldstone
Mr. Jack Gomperts
Miss Lane Goodfellow
Miss Lorraine C. Goodman
Mrs. Joseph Grace
Mrs. James Graham
Mrs. Joseph D. Grant
Mrs. Spencer Grant
Mrs. Horace Gray
Mr. and Mrs. Stuart N. Greenberg
Mrs. Frederick L. Greenlee
Mrs. Berthold Guggenheim
Mrs. Gustav Gumpel
Mrs. Morgan A. Gunst
Miss Rhoda Haas
Mrs. Walter A. Haas
Mrs. Walter A. Haas, Jr.
Miss Ethel Hager
Mrs. Randolph Hale
Mr. R. B. Hale
Mrs. William L. Halfpenny
Mrs. John Lindsay Hanna
Mrs. Richard J. Hanna
Mrs. Robert D. Harden
Mrs. L. W. Harris
Mrs. Russell Hastings
Mrs. Eulystus Lyon Hayes
Mrs. Timothy Hayes
Mr. A. W. Hazen
Mrs. Richard Heimann
Mrs. E. S. Heller
Mr. Walter D. Heller
Mr. Walter S. Heller
Mrs. Frederick Hellman
Mrs. I. W. Hellman
Mrs. Barbara Urba Hendel
Mrs. Wellington S. Henderson
Mrs. A. W. Hewlett
Mr. Benjamin H. Hicklin
Miss Ann Hill
Mrs. Fentress Hill
Mrs. Harold Hill
Mrs. Harry Hill
Mrs. Stanley Hiller
Mr. and Mrs. Harry H. Hiip
Mrs. A. F. Hockenbeamer
Mrs. Clifford P. Hoffmann
Mrs. Osgood Hooker
Mrs. Robert Hotle
Mrs. Thomas Carr Howe, Jr.
Miss Mina B. Hughes
Mrs. Thomas R. Hughes
Miss Betty V. Humphreys
Mrs. T. B. Hunter
Marion P. Huntington

OPERA GUILD MEMBERS—Continued

<p>Mrs. John Power Hutchins Mrs. James Irvine Mrs. James Jackman Dr. S. Nicholas Jacobs Mr. R. J. Jansen Mr. Harold I. Johnson Mrs. Otis Johnson Mrs. Walter S. Johnson Mrs. Ivar Johnson Mrs. Clarence Loran Johnston Dr. Herbert G. Johnstone Mrs. Elizabeth Jongeneel Mrs. Henry Kaiser Mr. Ben C. Keator Mrs. Charles J. Keenan Mrs. Edward D. Keil Mrs. T. Henshaw Kelly Mr. Charles Kendrick Mrs. Easton Kent Mrs. Donald Kieffer Mrs. Henry S. Kiersted Mrs. W. K. Kilpatrick Mr. Percy L. King Mr. A. J. Kirkpatrick Mrs. J. R. Kleinjung Mrs. John B. Knox Miss Caroline Korbcl Mrs. Abraham Koshland Mrs. Daniel Koshland Mrs. Marcus S. Koshlund Miss Frances Kosta Mr. Frederick J. Koster Mr. Gus Kroesen Mrs. H. N. Kuechler, Jr. Esther Kuenz Mrs. Breck Lamont Mrs. Albert George Lang Mrs. Philip V. H. Lansdale Honorable and Mrs. Roger D. Lapham Mrs. Roger D. Lapham, Jr. Mrs. Charles G. Lathrop Mrs. T. M. Lauridsen Mrs. Claude Lazard Miss Rena Lazelle Mrs. A. Lendle Mrs. Louis Lengfeld Mr. Felix A. Lenhart Mrs. John A. Lessoine Miss Elvira LeStrange Mrs. Azro N. Lewis</p>	<p>Mrs. Sidney Liebes Frances Marie Lilienthal Mr. Philip N. Lilienthal, Jr. Mr. F. L. Lipman Mr. R. L. Litchfield Miss Edith Livermore Mrs. Norman Livermore Mr. Carl Livingston Mr. and Mrs. James K. Lochead Mrs. Dan E. London Miss Ann M. Lovejoy Miss Louise Lovell Mrs. W. Palmer Lucas Miss Myrtle Lugg Mrs. Thomas P. Mailliard Mrs. Decker McAllister Mrs. Atholl McBean Mrs. T. R. McCarron Mr. A. M. Carty Mrs. W. H. McCormick Mrs. John McGaw Mrs. D. E. McLaughlin Mrs. George P. McNear Mrs. Errol MacBoyle Mr. and Mrs. Grover A. Magnin Dr. Ergo A. Majors Mrs. Vivian Mann Mrs. Randolph W. Martenet Mrs. Charles O. Martin Mrs. Water Martin Mrs. Charles Mayer Miss Evelyn Mendesolle Mrs. William G. Merchant Mrs. R. P. Merillion Mr. and Mrs. Gaetano Merola Mrs. H. C. Merritt, Jr. Mrs. John B. Metcalf Mrs. Julian J. Meyer Mrs. Robbins Milbank Mr. C. O. G. Miller Mrs. Harry East Miller Mrs. Earl D. Minton Pvt. Franklin Mittau Mr. Edward F. Moffatt Mr. J. K. Moffitt Mrs. E. R. Mogel Mrs. L. Mogel Mrs. Kenneth Monteagle Mr. Kenneth Monteagle Mr. and Mrs. Paige Monteagle Mr. Frederick H. Montgomery</p>	<p>Mr. George Montgomery Mr. Charles Moore Mrs. Joseph A. Moore Mrs. Ramsay Moran Mrs. James W. Morgan Dr. Grace McCann Morley Mrs. Philip C. Morse Miss Alicia Mosgrove Dr. W. H. Murphy Miss Laura Musto Mrs. A. N. Nathan National Broadcasting Co. Mrs. Hans Nelson Miss Julia M. Neppert Mrs. John Archibald Newcomb Mr. John Francis Neylan Mr. J. LeRoy Nickel, Jr. Mrs. William H. Noble Mrs. William H. Nolan Miss Anna C. O'Brien Mrs. Mary Obuien Mrs. Jack Okell Miss Margaret Olcese Mr. Benjamin J. Older Mrs. A. Leslie Oliver Mrs. Warren Olney, Jr. Mrs. Julius Oppenheimer Mrs. William H. Orrick Mr. Charles R. Page Lorriene Parisen Miss Barbara Parrott Mr. Philip P. Paschel Mrs. Oscar Butler Perry Mrs. Herman Phleger Mr. and Mrs. G. Pisani Mr. Aram Poladian Mrs. Wesley A. Pomeroy Mrs. George A. Pope, Jr. Mrs. Kenneth Pope Mrs. Hugh B. Porter Mrs. M. C. Porter Mrs. Ashton Potter Mr. J. Sheldon Potter Miss Eva Powell Mrs. Jerome V. Powell Mrs. Stanley Powell Mr. and Mrs. Stanley Powell, Jr. Mr. Walter G. Preddy Mrs. John Rangio Dr. Ralph Arthur Reynolds Mrs. H. A. Richardson</p>
---	--	--

ON THE RECORD

THE MUSIC YOU LOVE TO HEAR
YOUR FAVORITE OPERA, SYMPHONY
AND POPULAR NEW RELEASES

BALDWIN PIANO CO.

Record Department

310 Sutter Street

SUtter 8500

PENINSULA BOX OFFICE

"Choice seats for all attractions"

338 University Ave.
Palo Alto 22122

Ben Franklin Hotel
San Mateo 43348

1454 Burlingame Ave.
Burlingame 31232

OPERA GUILD MEMBERS—Continued

Miss Gertrude Richter	Mrs. Rose Silver	Mr. Ernest J. Torregano
Miss Margarete Riegg	Mr. R. O. Simon	Miss Anna O. Touvinen
Mrs. Walter Riegger	Mr. Charles W. Slack	Mrs. James W. Townen
Mrs. James W. Roberts	Mrs. Leon Sloss, Jr.	Dr. and Mrs. Harold Trimble
Mrs. John T. Roberts	Mrs. Leon Sloss	Mrs. Henri W. Trumbull
Mr. and Mrs. Hall Roe	Mrs. Louis Sloss	Mrs. Alfred S. Tubbs
Mrs. Nathan Rogers	Judge and Mrs. M. C. Sloss	Mrs. Nion Tucker
Ms. Arline Miller Rolkin	Mrs. George D. Smith	Mrs. John R. Upton
Mr. Robert A. Roos	Mrs. Josephine A. Smith	Mrs. Sidney M. Van Wyck
Mr. John N. Rosekrans	Mrs. Melville L. Smith	Mr. and Mrs. Reginald L.
Mrs. Charles W. Rosenbaum	Mrs. Russel Smith	Vaughan
Mrs. Angela Wing Roth	Captain G. W. Somers	Mr. Paul Verdier
Mrs. William P. Roth	Soroptomist Club	Mrs. Walter Vojon
Mrs. Dorothy Royce	Mrs. Robert Gordon Sproul	Dr. C. E. Voigt
Mr. F. W. Rubke	Mrs. E. B. Stanwood	Mrs. Daniel Volkmann
Mrs. Henry Potter Russell	Miss Gynne Stern	Mrs. Norman Waggoner
Miss Pauline E. Ryder	Mrs. Sigmund Stern	Mr. George Wagner
Miss Virginia Ryder	Mrs. Lawrence Strassburger	Mrs. Richard Walker
Mr. Marcus L. Samuels	Mr. and Mrs. Jerd Sullivan	Mrs. Ward Walkup
Mrs. Karl Schaefer	Mrs. Alfred Sutro	Mr. Morton Wallace
Mr. and Mrs. Carl Schaubey	Mrs. John A. Sutro	Mrs. Clarence R. Walter
Mrs. Rudolph Schilling	Mrs. Oscar Sutro	Mrs. John I. Walter
Mr. George B. Schirmer	Mrs. Oscar Sutro, Jr.	Mrs. Lingan Warren
Mr. Nat Schmulowit	Mr. Louis Sutter	Mr. Michel D. Weill
Miss Violet G. Schoning	Mr. Henry F. Swift	Mrs. Dorothy Weiss
Mr. Albert Schwabacher	Mrs. Alfred B. Swinerton	Mrs. Millard C. White
Mr. James H. Schwabacher	Mrs. Powers Symington	Mrs. Frederick C. Whitman
Mrs. Louis A. Schwabacher	Mrs. Andrew Talbot	Mrs. F. A. Wickett
Mrs. Bert C. Scott	Miss June Tanzer	Mrs. Brayton Willbur
Mr. H. S. Scott	Mrs. David Armstrong Taylor	Mr. Stephen Williams
Mr. Walter Sedgley	Mr. George C. Thierbach	Mrs. W. F. Willimette
Mr. and Mrs. Bruce Selfridge	Mrs. F. F. Thomas, Jr.	Mrs. Dean Witter
Mrs. Richard H. Shainwald	Mrs. Myron I. Thomas	Dr. Dorothy A. Wood
Mrs. R. S. Shainwald	Mrs. Miller Thomlinson	Mrs. Theodore Wores
Mrs. Nelson Towne Shaw	Barbara B. Thompson	Miss Barbara Young
Mrs. A. H. Shearer	Mrs. Julian Thorne	Mrs. Clarence Young
Mrs. Fred R. Sherman	Mr. W. G. Thornton	Mrs. V. Zaruba
Mrs. Francis Shook	Miss Ida Thrans	Mrs. Harold I. Zellerbach
Mrs. Henry J. Siegler	Mrs. M. C. Threlkeld	Mr. J. D. Zellerbach
Mrs. Stauffer Sigall	Mrs. Joseph Tobin	Mr. Edgar T. Zook
	Mrs. Edward Topham, Jr.	

FIRE NOTICE

There are sufficient exits in this building to accommodate the entire audience. The exit indicated by the lighted "Exit" sign nearest your seat is the shortest route to the street. In case of fire please do not run—**Walk through that exit.**

For extraordinary performance, magnificent musical tone and authentic cabinet design, remember this name when you buy your new radio-phonograph with FM.

Freed-Oisemann
"One of the world's great radio-phonographs"

FREED RADIO CORPORATION • NEW YORK, N. Y.

discoveries in beauty from the noteworthy H G White collection of exclusive giftware & antiques



The London Shop

352 SUTTER ST • SAN FRANCISCO • TELEPHONE EXBROOK 2408

CONTRIBUTORS TO 1945 SEASON

Amberg-Hirth
 Anglo California National
 Bank
 Constant J. Auger
 Baldwin Piano Co.
 Blum's
 Borden's Dairy Delivery Co.
 Bullock & Jones Co.
 City of Paris
 City Transfer & Storage Co.
 Columbia Concerts Inc.
 Davis-Schonwasser
 The Emporium
 Julius Eppstein Florists
 Fairmont Hotel
 Fox West Coast Agency
 Nelly Gaffney
 Granat Bros.

S. & G. Gump Company
 Hale Bros.
 Hastings Clothing Co.
 Joseph's Florist
 Juliettes
 KGO American Broadcasting
 Co. Inc.
 Carolyn Kelsey
 K. H. Lengfeld
 H. Liebes & Company
 Livingston Bros.
 Mr. and Mrs. Grover A.
 Magnin
 I. Magnin & Company
 Joseph Magnin Company
 Maison Mendessolle
 Mark Hopkins Hotel
 Merrill's Drug Centers

Musicians Union, Local No. 6
 O'Connor, Moffatt & Co.
 Palace Hotel
 Pisani Printing & Publishing
 Co.
 Edward K. Pond
 Ransohoffs
 Roos Bros.
 Schneider Bros. Inc.
 Sherman, Clay & Co.
 Shreve & Co.
 Sommer & Kaufmann
 Standard of California
 St. Francis Hotel
 Weinstein Co. Inc.
 White House
 Williams & Berg Co.
 Yellow Cab Company

GIFTS *that say "I'm thinking of YOU"*

California flowers . . . exquisitely reproduced in
 hand made ceramic pin and earring sets . . .
 Hand blocked smocks for house and Victory Garden
 wear . . . Good luck Pixies . . . Unusual, worth-
 while gifts.

THE NATALIE SHOP

12 TILLMAN PLACE
 Bet. Sutter & Post Sts.
 Off Grant Avenue . . .
 Phone: DOuglas 1502

STEWART BURRWELL BRADY

Scholarship Pupil of DINO BORGIOLO, London, England
Vocal Psychiatrist

644 Powell Street, San Francisco

Telephone DOuglas 0556

ELIZABETH WILLS

Voice Building — Coaching

Teacher of
 Florence Alba

San Francisco

Studio—701 Pine Street
 Telephone—SUTter 1584

ALITA ARRICK

TEACHER OF PIANO
 CLASSICAL COURSE

Pupils Prepared for Recitals,
 Vocal Coaching and
 Accompanying

163 Sutter Street EXbrook 4652
 San Francisco 4, Calif.

STELLA SPRAGUE BEST VOICE

Italian Method • Bel Canto

Pupils prepared for Grand Opera and Concert
 2845 Van Ness Ave. GRaystone 2786

CITY TRANSFER CO.

SERVES SAN FRANCISCO OPERA CO.

WHY NOT YOU?

MOVING - STORAGE - SHIPPING

333 TURK STREET PRespect 3060

HANCOCK BROS.

ROLL AND RESERVED SEAT TICKETS

★

25 JESSIE STREET DOuglas 2191
 San Francisco 5, California



PISANI PRINTING & PUBLISHING CO., 700 MONTGOMERY, S. F.

Can this service help me?

Many a man, engrossed in his business or profession, has found a Trust Account with his bank helpful.

Under such an arrangement, the bank takes over and handles for its client the many time-consuming details of his *personal* investments. *Ask about this service.*

TRUST DEPARTMENT

Wells Fargo
Bank & UNION TRUST CO.

SAN FRANCISCO

Established 1852

Member F. D. I. C.

Start with Chesterfields and you can add only orchids and the theatre for a perfect evening. Chesterfield's Right Combination World's Best Tobaccos always gives you smoking pleasure at its best. Chesterfields satisfy because they're *milder... cooler... better-tasting.*

CHESTERFIELD
 RIGHT COMBINATION WORLD'S BEST TOBACCO'S

WEDNESDAY NIGHT, OCTOBER 17, at 8:15

La Traviata

Opera in four acts. Music by Giuseppe Verdi.

Text by Piave, after Dumas' "La Dame aux Camelias."

THE CAST

Violetta Valery, a lady of the demi-monde.....LICIA ALBANESE
Alfredo Germont, lover of Violetta.....CHARLES KULLMAN
Giorgio Germont, his father.....FRANCESCO VALENTINO
Gaston, Viscount of Letorieres.....ALESSIO DE PAOLIS
Baron Douphol, a rival of Alfredo.....GEORGE CEHANOVSKY
Flora, friend of Violetta.....ANITA RAGUSA
Annina, maid of Violetta.....KATHLEEN LAWLOR
Dr. Granville.....CHARLES GOODWIN
Marquis d'Obigny.....WALTER OLITZKI
Major-domo.....MAX LORENZINI

Ladies and Gentlemen, Friends of Violetta and Flora.

Solo Dancers: Ruby Asquith and Willam Christensen

Corps de Ballet

STAGE DIRECTOR

ARMANDO AGNINI

CONDUCTOR

PIETRO CIMARA

CHORUS DIRECTOR

KURT HERBERT ADLER

TIME AND PLACE: About 1840; Paris and Environs

Act I: Drawing-room in the House of Violetta

Act II: A Villa near Paris

Act III: Garden of Flora's Palace

Act IV: Violetta's Bed Chamber

TICKETS FOR EXTRA PERFORMANCES
AT OPERA BOX OFFICE, CITY OF PARIS

Encores not permitted — Bell rings three minutes before curtain rises