

Pagliacci

1945

Sunday, October 7, 1945 2:15 PM

SFO\_PUB\_01\_SFO\_1945\_11

Publications Collection

San Francisco Opera Archives

*Twenty-third Annual Season*  
*San Francisco Opera Association*  
*Gietano Merola General Director*



*War Memorial Opera House*  
*September 25 to October 27*

*1945*

## *An Invitation*

### TO THE WOMAN OF AFFAIRS

To every woman, her security is precious—a necessity. But the details of looking after the stocks, bonds, real estate, and other assets which provide that security are often too burdensome for any one person.

A woman can simplify her affairs, and better secure her future, just as many busy men do, by letting financial specialists shoulder part, or all, of this burden of asset management—buying, selling, exchanging, redeeming securities; leasing, repairing, insuring property; computing and paying taxes—problems ever changing, never ending.

Our Trust Service can protect and preserve her interests in many ways—advising, managing, carrying out her wishes with skilled knowledge and experience.

Have a chat with one of our Trust Officers. There will be no obligation.

#### TRUST DEPARTMENT

1 Sansome Street • San Francisco

20 other California offices





● Most all famous names in the world of music are exclusive with Sherman, Clay: the immortal Steinway, Chickering, and other fine pianos; the Hammond organ; the Capehart, Conn, Gibson and other fine band and orchestra instruments. Now, as it has been for 75 years, music lovers look to Sherman, Clay for everything fine in music.

SHERMAN, CLAY'S 8 PACIFIC COAST STORES ARE LOCATED IN  
SAN FRANCISCO • OAKLAND • SAN JOSE • SACRAMENTO • FRESNO • PORTLAND • SEATTLE

City  Paris



*Christian*

Sinuous ripple of fringe . . .  
inspired magnificence on  
a sculptured black sheath  
and dramatic cape.

The Gown Salon, Third Floor



G A E T A N O M E R O L A

G E N E R A L

D I R E C T O R

S A N F R A N C I S C O O P E R A C O M P A N Y

YOU'LL BE GLAD  
YOU WAITED FOR

*Kirk*



... because sterling by Kirk, America's oldest silversmiths, has been a treasured possession in American homes for over a century... cherished for its superb weight, finish and proportion. Although we may not have unlimited quantities of Repousse and other inimitable Kirk patterns on hand at all times you may be sure that your order will be filled as rapidly as possible.

*Granat Bros*  
SHREVE TREAT & EACRET

EXCLUSIVE AGENT FOR KIRK SILVER  
IN NORTHERN CALIFORNIA

# SAN FRANCISCO OPERA ASSOCIATION



## OFFICERS

KENNETH MONTEAGLE  
PRESIDENT

MRS. STANLEY POWELL  
VICE-PRESIDENT

ARTHUR MERRILL BROWN, JR.  
VICE-PRESIDENT

CHARLES R. BLYTH  
VICE-PRESIDENT

GEORGE T. CAMERON  
TREASURER

EDWARD F. MOFFATT  
SECRETARY

## BOARD OF DIRECTORS

GEORGE WASHINGTON BAKER, JR.  
CHARLES R. BLYTH  
ARTHUR MERRILL BROWN, JR.  
GEORGE T. CAMERON  
WILLIAM W. CROCKER  
MORTIMER FLEISHHACKER

TIMOTHY HEALY  
KENNETH MONTEAGLE  
JOHN FRANCIS NEYLAN  
MRS. STANLEY POWELL  
MRS. HENRY POTTER RUSSELL  
NION R. TUCKER

## EXECUTIVE STAFF

PAUL POSZ  
BUSINESS MANAGER

CURRAN SWINT, PUBLICITY DIRECTOR

ARTHUR FRAHM-LALIA DECKER  
KATHLEEN LAWLOR  
TICKET SALES

EVELYN CROCKETT-GERALD G. ROSS  
PHYLLIS AMATI  
OFFICE SECRETARIES



# VETERANS OF WORLD WAR II!

*If you are interested in a Home Loan*

*... whether a: **GI Loan***

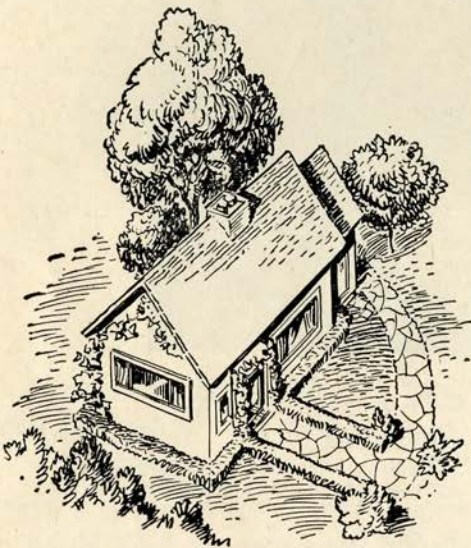
*an*

**FHA Loan**

*or a*

**Bank Loan**

*call at any of our  
seven offices*



INCORPORATED FEBRUARY 10, 1868

## THE SAN FRANCISCO BANK

*Savings*

Member Federal Deposit Insurance Corporation

*Trust*

526 California Street, San Francisco

Mission and Twenty-first Streets  
Clement Street and Seventh Avenue  
1528 Fillmore Street

Haight and Belvedere Streets  
West Portal Avenue and Ulloa Street  
1435 Burlingame Avenue, Burlingame

PARKER S. MADDUX, *President*

# BOARD OF GOVERNORS

GEORGE WASHINGTON BAKER, JR.	REUBEN B. HALE	MRS. JOHN FRANCIS NEYLAN
P. A. BERGEROT	MRS. LAWRENCE W. HARRIS	JOHN FRANCIS NEYLAN
CHARLES R. BLYTH	J. EMMET HAYDEN	ETTORE PATRIZI
J. BRENDAN BRADY	TIMOTHY HEALY	RALPH L. PHELPS
H. SEWALL BRADLEY	EDWARD D. KEIL	MRS. M. C. PORTER
ARTHUR MERRILL BROWN, JR.	CHARLES H. KENDRICK	MRS. STANLEY POWELL
GUIDO CAGLIERI	MRS. MARCUS S. KOSHLAND	STANLEY POWELL
MRS. GEORGE T. CAMERON	LEWIS A. LAPHAM	ANGELO J. ROSSI
GEORGE T. CAMERON	MRS. STINE LEIS	MRS. HENRY POTTER RUSSELL
CHARLES A. CHRISTIN	J. B. LEVISON	A. SBARBORD
TEMPLETON CROCKER	MISS EDITH LIVERMORE	FRED R. SHERMAN
WILLIAM W. CROCKER	M. E. LOMBARDI	PAUL SHOUP
GEORGE E. CROTHERS	MISS RUTH W. LORING	MRS. M. C. SLOSS
MRS. FRANK P. DEERING	MISS SALLIE MAYNARD	RALPH J. A. STERN
MISS MARY C. DUNHAM	WILLIAM GLADSTONE MERCHANT	MRS. SIGMUND STERN
SIDNEY M. EHRMAN	MRS. C. D. G. MILLER	MRS. DAVID ARMSTRONG TAYLOR
MRS. WILLIAM M. FITZHUGH	ROBERT W. MILLER	M. C. THRELKELD
MORTIMER FLEISHHACKER	EDWARD F. MOFFATT	NION R. TUCKER
A. P. GIANNINI	KENNETH MONTEAGLE	RANDOLPH C. WALKER
RANDOLPH HALE	GUIDO MUSTO	WHITNEY WARREN, JR.



## WAR MEMORIAL OPERA HOUSE

(OWNED AND OPERATED BY THE CITY AND COUNTY OF SAN FRANCISCO  
THROUGH THE BOARD OF TRUSTEES OF THE WAR MEMORIAL)

### BOARD OF TRUSTEES

CHARLES B. KLEUPFER PRESIDENT	GUIDO J. MUSTO VICE-PRESIDENT	WALTER A. LEONETTI
SIDNEY M. EHRMAN	WILBUR A. HENDERSON	RICHARD H. NEWHALL
ALVIN GERLACK	DAN S. HEWITT	RALPH J. A. STERN
D. LYLE GHIRARDELLI	J. BRUCE JONES	

EDWARD SHARKEY  
MANAGING DIRECTOR OF  
THE WAR MEMORIAL

IRA G. THOMPSON  
SECRETARY TO THE BOARD  
OF TRUSTEES

---

*Buffet Service in Basement Promenade and Dress Circle during all performances*

---

LIBRETTOS AND OPERA GLASSES IN FOYER . HEAD SETS FOR THE DEAF ARE  
AVAILABLE AT TABLE IN MAIN FOYER . ATTENDANT WILL CONNECT  
WITH SEAT LOCATION UPON REQUEST . FOR LOST AND FOUND  
INFORMATION, INQUIRE AT CHECK ROOM NO. 1

WILLIAM A. MEADE, DIRECTOR OF HOUSE SERVICE



*Over a  
Century of furnishing  
America's Homes*

W & J **SLOANE**

216 SUTTER near GRANT



SAN FRANCISCO 8, CALIFORNIA

# SAN FRANCISCO OPERA COMPANY

GAETANO MEROLA

GENERAL DIRECTOR

ARMANDO AGNINI  
STAGE AND TECHNICAL DIRECTOR

KURT HERBERT ADLER  
CHORUS DIRECTOR

PAUL POSZ  
BUSINESS MANAGER

HERBERT GRAF  
STAGE DIRECTOR

JESSIE KEENE  
SECRETARY

ETIENNE BARONE  
STAGE MANAGER

WILLAM CHRISTENSEN  
BALLET MASTER



## CONDUCTORS and ASSISTANTS

GAETANO MEROLA

WILLIAM STEINBERG

GEORGE SEBASTIAN

PIETRO CIMARA

KARL RIEDEL

OTELLO CERONI

KURT HERBERT ADLER

KARL KRITZ

ANTONIO DELL'OREFICE

NAOUM BLINDER  
CONCERT MASTER

JULIUS HAUG  
PERSONNEL MANAGER

## ARTISTS

LICIA ALBANESE  
SOPRANO

EVARISTO ALIBERTINI  
BARITONE

LORENZO ALVARY  
BASS

BRITTA ANDERSON  
CONTRALTO

SALVATORE BACCALONI  
BASS

BIANCA BRUNI  
SOPRANO

LORRAINE CALCAGNO  
CONTRALTO

LEILA CAMBI  
SOPRANO

FRANCES CASTELLANI  
SOPRANO

GEORGE CEHANOVSKY  
BARITONE

NADINE CONNER  
SOPRANO

EVELYNN CORVELLO  
SOPRANO

VIVIAN DELLA CHIESA  
SOPRANO

MURIEL DEMERS  
SOPRANO

ALESSIO DE PAOLIS  
TENOR

LILY DJANEL  
SOPRANO

LEO GALT  
BARITONE

JOHN GARRIS  
TENOR

HERTA GLAZ  
CONTRALTO

CHARLES GOODWIN  
BASS

PAUL GUENTER  
BARITONE

MACK HARRELL  
BARITONE

MARGARET HARSHAW  
CONTRALTO

ELMA HEITMAN  
SOPRANO

ROSE AGNES HERSCH  
CONTRALTO

MARY BELLE JACOBS  
SOPRANO

FREDERICK JAGEL  
TENOR

HERBERT JANSSEN  
BARITONE

RADUL JOBIN  
TENOR

MARILYNN KING  
SOPRANO

CHARLES KULLMAN  
TENOR

BRUND LANDI  
TENOR

KATHLEEN LAWLOR  
SOPRANO

LOTTE LEHMANN  
SOPRANO

PAUL LEIBER  
TENOR

MAX LORENZINI  
BARITONE

AUGUSTO LOURENZO  
BARITONE

ROBERT BRUCE MACKAY  
BASS

BENJAMIN MARTIN  
BARITONE

LAURITZ MELCHIOR  
TENOR

ROBERT MILLS  
BARITONE

ROBIN NELSON  
BARITONE

HERBERT NYSTROM  
TENOR

WALTER OLITZKI  
BARITONE

JAN PEECE  
TENOR

IVAN PETROFF  
BARITONE

EZIO PINZA  
BASS

LILY PONS  
SOPRANO

HILDE REGGIANI  
SOPRANO

ANITA RAGUSA  
SOPRANO

STELLA ROMAN  
SOPRANO

W. VERNON SANDERS  
BASS

BETTIE SANDERSON  
SOPRANO

ELEANOR STEBER  
SOPRANO

RISE STEVENS  
SOPRANO

GEORGE TALLONE  
TENOR

JOSEPH TISSIER  
TENOR

HELEN TRAUBEL  
SOPRANO

CLARAMAE TURNER  
CONTRALTO

FRANCESCO VALENTINO  
BARITONE

THELMA VOTIPKA  
SOPRANO

FREDERIC WILLIAMS  
TENOR

*The World's Greatest Artists*

are on

# VICTOR RECORDS



You can have command performances of Grand Opera in your home, through the medium of Victor Records. You will find the world's greatest artists in Victor's great Catalog of Music.

THE MUSIC AMERICA LOVES BEST!



CONSULT THESE VICTOR DEALERS FOR  
YOUR VICTOR RECORD REQUIREMENTS

<p><b>CITY OF PARIS</b> Douglas 4500 Paul Verdier, Pres. <i>Radios - Records</i> Normandy Lane</p>	<p><b>MUSIC CENTER</b> <i>San Francisco's Newest Record Shop</i> 40 POWELL STREET <i>Open Evenings till 9 p.m.</i></p>	<p><b>THE WHITE HOUSE</b> Raphael Weill &amp; Company <i>Radio-Record Shop</i> Fourth Floor</p>
<p><b>THE EMPORIUM</b> <i>San Francisco's Shopping Center</i> 835 MARKET STREET</p>	<p><b>O'CONNOR MOFFATT and Company</b> <i>Stockton at O'Farrell SUTter 1800</i></p>	<p><b>THE RECORD SHOP</b> 14 Tillman Place San Francisco 8, California Off Grant Ave. bet. Post and Sutter Phone EXbrook 2383 <i>"The Best in Recorded Music"</i></p>

# C H O R A L E N S E M B L E

## MISSES

BRITTA ANDERSON  
LUCY ARMAGANIAN  
VIOLET AURAND  
EILEEN BROWNE  
BIANCA BRUNI  
LORRAINE CALCAGNO  
LELIA CAMBI  
ELIZABETH CASE  
GRACE COLTRONE  
ELEANOR CORYELL  
MURIEL DEMERS  
SONYA FREED  
BARBARA FRITZ  
EMILY GRIGSBY  
THORA HARPER

ELMA HEITMAN

ROSE AGNES HERSCH

ORTHELLA HUGHES

MARY BELLE JACOBS

RHEA KESSLER

MARILYNN KING

LUCILE KIRTLEY

SYBIL LOUISE KNAPP

KATHLEEN LAWLOR

NEVART LEVON

DOROTHY MCINTYRE

DELPHIA PHILLIPS

BETTIE SANDERSON

VERA SOLAX

DORA DI TANO, ACCOMPANIST

## MESSRS.

EVARISTO ALIBERTINI  
ALBERT BARRETT  
HARRY BATHGATE  
FRED BEARDSLEY  
ALTON BERNHARD  
LOUIS BRAUNSTEIN  
JOHN CRONIN  
GALLIAND DANELUZ  
FLOYD DAVIS  
LORENZO DE BEAL  
AMERIGO DEL GRANDE  
ARTHUR DE MASI  
PHIL DOAN  
LEO GALT  
WILLIAM GORMAN  
PAUL GUENTER  
E. ERICH LAWRENCE  
PAUL LEIBER

MAX LORENZINI  
AUGUSTO LOURENZO  
ROBERT BRUCE MACKAY  
GIULIO MANCINI  
BENJAMIN MARTIN  
CARLO MENNUCCI  
ROBIN NELSON  
WILLIAM PETERSEN  
WILLIAM PETERSEN  
W. VERNON SANDERS  
BRUCE LINWOOD  
STEWART  
GEORGE TALLONE  
ALBERTO VANNUCCI  
EDWIN VANNUCCI  
FRED WAHLIN  
FREDERIC WILLIAMS  
HERMAN WISEMAN

## BALLET

RUBY ASQUITH, PRIMA BALLERINA

WILLAM CHRISTENSEN, CHOREOGRAPHER AND BALLET MASTER

### SOLOISTS

#### MISSES

CELENA CUMMINGS  
ROSALIE PROSCH  
SALAND

#### MISSES

LOIS TREADWELL  
JOCELYN VOLLMAR  
ONNA WHITE

### PRINCIPAL DANCERS

#### MISSES

BARBARA BADERTSCHER  
BETTY CUNEO  
MARCELLA DODGE  
ANTOINETTE GUHLKE  
JYMMI RIEDEL  
SALLY WHALEN  
WANA WILLIAMS

#### MESSRS.

ROBERT HANSEN  
RUSSELL HARTLEY  
FRANK NELSON  
RALPH PATTERSON  
JOAQUIN FELSCH  
ROBERT THORSON

### CORPS DE BALLET

#### MISSES

BENEVIEVE ASDONOVICH  
BONNY BELL  
JANE BOWEN  
VERA GOLD

#### MISSES

AUDREY GREENLEY  
NANCY JACOBS  
NANCY JOHNSON

#### MISSES

IRENE MANSFELDT  
JUDY NATHANSON  
MARCIANNE RAUB

#### MISSES

JANET SASSOON  
JOAN VICKERS  
CAROLINE WILLIAMS  
SYLVIA WILLIAMS

### PRODUCTION

EUGENE B. DUNKEL-FRITZ KRAENKE  
SCENIC ARTISTS

EARL MCGUIRE  
MASTER CARPENTER

CHARLES J. HOLZMUELLER  
MASTER ELECTRICIAN

JOHN T. HEAVEY  
MASTER OF PROPERTIES

### FOR WAR MEMORIAL OPERA HOUSE

S. E. SIMMONS  
MASTER CARPENTER

EDWARD J. ZETTEL  
MASTER ELECTRICIAN

CLAUDE L. WAGGONER  
MASTER OF PROPERTIES

### COSTUMES AND WIGS BY GOLDSTEIN & CO.

ALEXANDER AGNINI  
WARDROBE MASTER

INEZ DODSON  
WARDROBE MISTRESS

SUE MCGOWAN  
HAIRDRESSER

EVERETT MASON  
MAKEUP ARTIST

### PROGRAM

PISANI PRINTING & PUBLISHING COMPANY, PUBLISHERS, DESIGNERS AND PRINTERS



- LILY PONS  
LAURITZ MELCHIOR  
LICIA ALBANESE  
RAOUL JOBIN  
HELEN TRAUBEL  
CHARLES KULLMAN  
STELLA ROMAN  
EZIO PINZA  
RISE STEVENS  
LORENZO ALVARY  
VIVIAN DELLA CHIESA

# Artists of the San Francisco OPERA COMPANY

# Beaulieu Vineyard

## BV

### WINES



**B**EAULIEU VINEYARD is a family estate . . . located in the lovely Napa Valley of Northern California. Today, as for nearly half a century, we take pride in the quality of our wines. Our 600 acres of vines grow wine grapes of the finest strains. Thus the yield is far lighter than that of grapes of lesser quality.

Our old-world-type of winery has a storage capacity equal to five times our yearly production — thus we have ample facilities to develop our inventory of fine wines in small cooperage until bottle-ripe, and to bin them afterwards.

As a consequence of our painstaking methods, production is limited and our wines are not available everywhere.

#### FIVE REPRESENTATIVE BEAULIEU VINEYARD WINES

**GEORGES DE LATOUR PRIVATE RESERVE CABERNET:** An eminent wine, made solely with Cabernet Sauvignon grapes.

**BEAULIEU NAPA VALLEY MUSCAT DE FRONTIGNAN:** This wine has been acclaimed by experts as the finest dessert wine produced in America. A wine for entertaining.

**BEAUMONT:** Made with the famous Pinot Noir grapes (original cuttings from Cote d'Or district of France).

**BEAUCLAIR:** One of the fine white wines of the Napa Valley. Made with Johannesberger Riesling grapes.

**BEAUROSÉ.** A light, agreeable vinrosé. To be served very chilled. The hostess wine for lunch.

## Beaulieu Vineyard

FOUNDED AND OWNED CONTINUOUSLY BY THE DE LATOUR FAMILY SINCE 1900  
Vineyards and Winery at Rutherford, Napa County, California





FREDERICK JAGEL

LILY DJANEL

JAN PEERCE

HERTA GLAZ

FRANCESCO VALENTINO

MARGARET HARSHAW

SALVATORE BACCALONI

LOTTE LEHMANN

IVAN PETROFF

ELEANOR STEBER

MACK HARRELL

# Artists of the San Francisco OPERA COMPANY



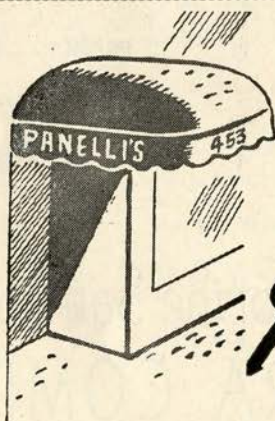


# *Simi Vineyard*

FINE CALIFORNIA WINES

When entertaining, serve superb SIMI vintage table wines . . . Burgundy, Cabernet, Carignan, Zinfandel, and Larose, Sauterne, Chablis . . . matured with unhurried care from choicest Sonoma hillside grapes . . . ask for SIMI . . . pronounced See-Me . . . at your dealer's.

**PARROTT & CO. . . San Francisco . . Sole U. S. Distributors**



*The New*

# *Panelli's*

. . . a distinctive Restaurant glorifying delicious Italian Cuisine, featuring the Charcoal Broiler . . . .  
Cocktails

453 PINE STREET . . . . . SUTTER 9937  
SAN FRANCISCO, CALIFORNIA



HILDE REGGIANI

HERBERT JANSSEN

NADINE CONNER

BRUNO LANDI

THELMA VOTIPKA

GEORGE CEHANOVSKY

ANITA RAGUSA

ALESSIO DE PAOLIS

FRANCES CASTELLANI

WALTER OLITZKI

JOHN GARRIS

# Artists of the San Francisco OPERA COMPANY



MUNICIPAL CONCERTS

1946  
THE ART COMMISSION  
Presents

SAN FRANCISCO  
SYMPHONY ORCHESTRA

JANUARY 11



ARTUR RUBINSTEIN

THE MASTER PIANIST  
PIERRE MONTEUX, CONDUCTING

JANUARY 24

TO

FEBRUARY 3



RUSSIAN BALLET  
BALLET THEATRE

10 SPECTACULAR PERFORMANCES  
ALL WITH SAN FRANCISCO SYMPHONY

FEBRUARY 13



LEONARD BERNSTEIN

GUEST CONDUCTOR  
JESUS MARIA SANROMA, PIANIST

FEBRUARY 28



LICIA ALBANESE

PRIMA DONNA, SAN FRANCISCO AND MET. OPERA CO.  
ALL OPERA PROGRAM  
GAETANO MEROLA, CONDUCTING

APRIL 6



JOSEPH SZIGETI

THE INCOMPARABLE VIOLINIST  
PIERRE MONTEUX, CONDUCTING



FIVE STAR SEASON

Season Reservations Now!

★SIX EVENTS including opening night of Ballet Theatre and choice of any one other Ballet performance, also the four guest artist concerts. \$11.40, \$8.40, \$6.90, \$4.80, \$3.60, tax incl. BOX OFFICE, Sherman, Clay, SU 1331



**ACME**  
..the beer with the  
high I.Q. (It Quenches!)

ACME BREWERIES • San Francisco, Los Angeles



# R E P E R T O I R E

## REGULAR SERIES

- CARMEN (*Bizet*) . . . . . *Tuesday Night*, September 25, at 8:00  
With Stevens, Steber, Votipka, Turner, Jobin, Harrell, Olitzki, De Paolis, Cehanovsky.  
MEROLA, *Conductor*
- LA BOHEME (*Puccini*) . . . . . *Friday Night*, September 28, at 8:15  
With Albanese, Conner, Kullman, Valentino, Pinza, Cehanovsky, Baccaloni, Alibertini,  
Lorenzini, Messina. MEROLA, *Conductor*
- DER ROSENKAVALIER (*Richard Strauss*) . . . . . *Tuesday Night*, October 2, at 8:00  
With Lehmann, Stevens, Steber, Glaz, Votipka, Alvary, Landi, Olitzki, De Paolis,  
Harrell, Garris, King, Cambi, Lawlor, Hersch, Sanderson, Tallone, Tissier, Goodwin,  
Leiber, Guenter, MacKay, Williams. SEBASTIAN, *Conductor*
- TRISTAN UND ISOLDE (*Wagner*) . . . . . *Friday Night* October 5, at 8:00  
With Traubel, Glaz, Melchior, Janssen, Alvary, Olitzki, Garris, Goodwin.  
STEINBERG, *Conductor*
- DIE WALKURE (*Wagner*) . . . . . *Tuesday Night*, October 9, at 8:00  
With Traubel, Djanel, Harshaw, Melchior, Janssen, Alvary, Votipka, Glaz, Ragusa,  
Demers, Anderson, Turner, Calcagno. STEINBERG, *Conductor*
- BORIS GODOUNOFF (*Moussorgsky*) . . . . . *Friday Night*, October 12, at 8:00  
With Pinza, Baccaloni, Jagel, Alvary, De Paolis, Cehanovsky, Garris, Della Chiesa,  
Harshaw, Glaz, Castellani, Turner, Mills, Nystrom, Tissier, Goodwin, Bruni, Calcagno,  
Leiber, Martin, Lourenzo. SEBASTIAN, *Conductor*
- DON GIOVANNI (*Mozart*) . . . . . *Tuesday Night*, October 16, at 8:00  
With Pinza, Baccaloni, Landi, Alvary, Mills, Roman, Della Chiesa, Albanese.  
STEINBERG, *Conductor*
- LUCIA DI LAMMERMOOR (*Donizetti*) . . . . . *Friday Night*, October 19, at 8:15  
With Pons, Votipka, Peerce, Alvary, Petroff, Garris, Nystrom. CIMARA, *Conductor*
- L'HEURE ESPAGNOLE (*Ravel*) . . . . . *Tuesday Night*, October 23, at 8:00  
With Albanese, Harrell, Baccaloni, De Paolis, Garris. MEROLA, *Conductor*  
*followed by*
- SALOME (*Richard Strauss*) . . . . .  
With Djanel, Harshaw, Glaz, Jagel, Janssen, Garris, Alvary, Cehanovsky, De Paolis,  
Heitman, Nelson, Mills, Tallone, Nystrom, Tissier, Goodwin, Sanders, Galt.  
SEBASTIAN, *Conductor*
- RIGOLETTO (*Verdi*) . . . . . *Friday Night*, October 26, at 8:15  
With Pons, Glaz, Petroff, Peerce, Alvary, De Paolis, Cehanovsky, Calcagno, Ragusa,  
Lawlor, Nelson, Mills. CIMARA, *Conductor*

## POPULAR SERIES

- LES CONTES D'HOFFMANN (*Offenbach*) . . . . . *Thursday Night*, October 4, at 8:15  
With Albanese, Djanel, Glaz, Corvello, Turner, Jobin, Pinza, Valentino, Olitzki,  
De Paolis, Alvary, Garris, Tissier, Mills, Sanders. MEROLA, *Conductor*
- CARMEN (*Bizet*) . . . . . *Thursday Night*, October 11, at 8:00  
With same cast as Regular Series performance.
- DER ROSENKAVALIER (*Richard Strauss*) . . . . . *Thursday Night*, October 18, at 8:00  
With same cast as Regular Series performance.
- BORIS GODOUNOFF (*Moussorgsky*) . . . . . *Monday Night*, October 22, at 8:00  
With same cast as Regular Series performance.
- DON GIOVANNI (*Mozart*) . . . . . *Thursday Night*, October 25, at 8:00  
With same cast as Regular Series performance except Eleanor Steber will sing Donna Elvira  
and Nadine Conner will sing Zerlina.

## EXTRA PERFORMANCES

- LA TRAVIATA (*Verdi*) . . . . . *Sunday Matinee*, September 30, at 2:15  
With Albanese, Ragusa, Lawlor, Kullman, Valentino, De Paolis, Cehanovsky, Olitzki,  
Goodwin. MEROLA, *Conductor*
- CAVALLERIA RUSTICANA (*Mascagni*) . . . . . *Sunday Matinee*, October 7, at 2:15  
With Della Chiesa, Glaz, Votipka, Kullman, Petroff.  
*followed by*
- I PAGLIACCI (*Leoncavallo*) . . . . .  
With Albanese, Jobin, Valentino, Harrell, De Paolis, Tallone, Sanders.  
ADLER, *Conductor*
- TRISTAN UND ISOLDE (*Wagner*) . . . . . *Sunday Matinee*, October 14, at 2:00  
With same cast as Regular Series performance except Margaret Harshaw will sing Brangane.
- LA TRAVIATA (*Verdi*) . . . . . *Wednesday Night*, October 17, at 8:15  
With same cast as Regular Series performance.
- BARBER OF SEVILLE (*Rossini*) . . . . . *Sunday Matinee*, October 21, at 2:00  
With Reggiani, Turner, Landi, Valentino, Baccaloni, Pinza, De Paolis.  
CIMARA, *Conductor*
- LA BOHEME (*Puccini*) . . . . . *Wednesday Night*, October 24, at 8:15  
With same cast as Regular Series performance except Vivian Della Chiesa will sing Mimi.
- AIDA (*Verdi*) . . . . . *Saturday Night*, October 27, at 8:00  
With Roman, Harshaw, Jagel, Petroff, Pinza, Alvary, De Paolis, Votipka.  
MEROLA, *Conductor*

For the finest music in radio . . .

Keep tuned to

**KPO**

★ **680** on your dial

John Charles Thomas  
Sun. at 11:30 a.m.



Contented Hour  
Mon. at 7:00 p.m.

General Motors Symphony  
Sun. at 2:00 p.m.



Telephone Hour  
Mon. at 9:00 p.m.

Album of Familiar Music  
Sun. at 6:30 p.m.



Light and Mellow  
Tues. at 9:30 p.m.

Hour of Charm  
Sun. at 7:00 p.m.



Standard School Broadcast  
Thurs. at 10:00 a.m.  
(starting Oct. 18)

Standard Hour  
Sun. at 8:30 p.m.



Waltz Time  
Fri. at 6:00 p.m.

Voice of Firestone  
Mon. at 5:30 p.m.



Know Your Symphony  
Sat. at 5:00 p.m.



Part of a continuous Parade of Stars  
heard over KPO and the  
**NATIONAL BROADCASTING COMPANY**  
America's Number One Network

THE SAN FRANCISCO OPERA ASSOCIATION

Presents

SAN FRANCISCO'S GREATEST DANCE FESTIVAL

*An Unprecedented Ballet Revue*

*Old Classical*

*Modern*

*New Classical*

THE ONE AND ONLY

# Ballet Russe de Monte Carlo

*Two Weeks — Fifteen Gala Performances*

## Repertoire

### *Evenings at 8:30*

- Tues. Eve., Nov. 13**  
BALLET IMPERIAL  
\*COMEDIA BALLETTICA  
L'APRES MIDI D'UN FAUNE  
LE BEAU DANUBE
- Wed. Eve., Nov. 14**  
LE BOURGEOIS GENTILHOMME  
\*MOZARTIANA  
SCHEHERAZADE
- Thurs. Eve., Nov. 15**  
THE SNOW MAIDEN  
\*CONCERTO BAROCCO  
DIVERTISSEMENTS FROM COPPELIA
- Fri. Eve., Nov. 16**  
BALLET IMPERIAL  
\*FRANKIE AND JOHNNY  
GRAND ADAGIO  
LE BEAU DANUBE
- Sat. Eve., Nov. 17**  
CONCERTO BAROCCO  
DANSES CONCERTANTES  
COMEDIA BALLETTICA  
RODEO
- Sun. Mat., Nov. 18**  
LES SYLPHIDES  
LE BOURGEOIS GENTILHOMME  
GRAND ADAGIO  
RODEO
- Sun. Eve., Nov. 18**  
MOZARTIANA  
FRANKIE AND JOHNNY  
L'APRES MIDI D'UN FAUNE  
LE BOURGEOIS GENTILHOMME

### *Matinees at 2:30*

- Mon. Eve., Nov. 19**  
THE SNOW MAIDEN  
MOZARTIANA  
L'APRES MIDI D'UN FAUNE  
SCHEHERAZADE
- Tues. Eve., Nov. 20**  
CHOPIN CONCERTO  
DANSES CONCERTANTES  
COMEDIA BALLETTICA  
RODEO
- Wed. Eve., Nov. 21**  
CONCERTO BAROCCO  
L'APRES MIDI D'UN FAUNE  
THE NUTCRACKER
- Thurs. Eve., Nov. 22**  
MOZARTIANA  
FRANKIE AND JOHNNY  
DIVERTISSEMENTS FROM COPPELIA
- Fri. Eve., Nov. 23**  
LES SYLPHIDES  
DANSES CONCERTANTES  
PAS DE DEUX CLASSIQUE  
SCHEHERAZADE
- Sat. Mat., Nov. 24**  
LES SYLPHIDES  
CONCERTO BAROCCO  
COPPELIA
- Sun. Mat., Nov. 25**  
THE SNOW MAIDEN  
COMEDIA BALLETTICA  
THE NUTCRACKER
- Sun. Eve., Nov. 25**  
CONCERTO BAROCCO  
COMEDIA BALLETTICA  
MOZARTIANA  
LE BEAU DANUBE

\* San Francisco debut

ALEXANDRA DANILOVA  
NATHALIE KRASSOVSKA  
RUTHANNA BORIS  
MARIA TALLCHIEF  
DOROTHY ETHERIDGE  
GERTRUDE SVOBODINA

PAULINE GODDARD  
YVONNE CHOUTEAU  
MARIE-JEANNE  
FREDERIC FRANKLIN  
LEON DANIELIAN  
NICOLAS MAGALLANES

MICHEL KATCHAROFF  
NIKITA TALIN  
HERBERT BLISS  
PETER DEIGN  
ROBERT LINDGREN  
STANLEY ZOMPAKOS

*Brilliant Corps de Ballet · Symphony Orchestra · Company of 125*



Tickets: \$3.00, \$2.40, \$1.80, \$1.20, Tax Incl. Opera Box Office, City of Paris, EX 8585  
WAR MEMORIAL OPERA HOUSE





# Carmen Cavallaro

AND HIS FAMOUS ORCHESTRA  
OPENS TUESDAY, OCTOBER 2<sup>ND</sup>

*hotel*

**MARK HOPKINS**

GEO. D. SMITH • GENERAL MANAGER

# MONROE- ANDREW

*A DISTINCTIVE MEN'S SHOP*

**British Woolens ● Gentlemen's Furnishings**

**Hats—Sportswear**

*Custom Tailors*

**386 POST STREET**

---

*THE CONCERT DIVISION OF THE*  
**SAN FRANCISCO OPERA ASSOCIATION**

GAETANO MEROLA, *General Director*

PAUL POSZ, *Business Manager*

**SEASON 1945-1946**

*A New High in Concert Values*

**TWO OPERAS — PLUS**

**Tuesday, Nov. 13**  
BALLET RUSSE  
DE MONTE CARLO

**Thursday, Jan. 3**

TRAUBEL

**Sunday, Jan. 6**

HEIFETZ

**Friday, Jan. 18**  
ROSARIO and ANTONIO

**Monday, Jan. 21**  
SCHNABEL

**Monday, Feb. 11**  
BJOERLING

**Tuesday, Feb. 26**  
SERKIN

**Tuesday, Mar. 5**  
ROBESON

**Monday, Mar. 18**  
TOUREL

**Tuesday, Mar. 26**  
MENUHIN

TICKET PRICES

Orchestra and Boxes, \$3.00; Dress Circle, \$1.80 Tax Included

Other Sections Sold Out

**Opera Box Office — City of Paris — Ex 8585**

**WAR MEMORIAL OPERA HOUSE**

---

## **4 VICTOR ALBUMS YOU SHOULD OWN**

**ENRICO CARUSO:** Metropolitan Revivals from Lucia, Masked Ball, Rigoletto, La Boheme, Martha, I Lombardi, Faust, Samson et Delilah.

**BORIS GODOUNOFF** (abridged) Featuring Alexander Kipnis. All in Russian, complete on five 12-inch records.

**SCENES FROM WAGNER OPERAS:** Lauritz Melchior, singing arias from Siegfried, Tristan und Isolde, Lohengrin, Tannhauser, Der Fliegende Hollander.

**DER ROSENKAVALIER:** arranged as a symphonic suite; recorded by the Cincinnati Symphony Orchestra.

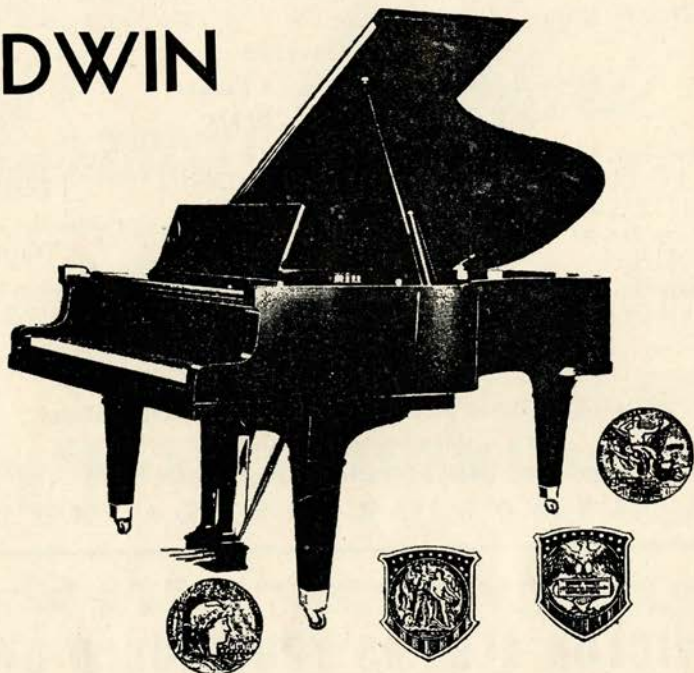
**For opera albums or single records, we invite you to visit the Classics Room on our Record Balcony.**

**SCHWABACHER-FREY**

MARKET OPPOSITE GRANT

THE OFFICIAL PIANO of the  
SAN FRANCISCO OPERA COMPANY

BALDWIN



*Choose your Piano as the Artists Do*



Lily Pons

Ezio Pinza

Helen Traubel

THE BALDWIN PIANO CO.

310 SUTTER STREET, SAN FRANCISCO  
1828 WEBSTER STREET, OAKLAND

# San Francisco Symphony Orchestra

*Pierre Monteux, Conductor*

LEONORA WOOD ARMSBY, *President and Managing Director*

HOWARD K. SKINNER, *Business Manager*



SCHAPIRO  
ANDERSON

STERN

MALCUZYNSKI  
SCHNABEL

FLEISHER  
MONTEUX

URY  
HOROWITZ

KANDER

LEVANT

STRAVINSKY

## *Twelve Friday Afternoons*

*Promptly at 2:30 o'clock*

- NOV. 23 OPENING CONCERT  
NOV. 30 VLADIMIR HOROWITZ, *Pianist*  
DEC. 7 ORCHESTRAL PROGRAM  
DEC. 14 GERHARD KANDER, *Violinist*  
DEC. 21 LEON FLEISHER, *Pianist*  
JAN. 4 MAXIM SCHAPIRO, *Pianist*  
JAN. 18 ARTUR SCHNABEL, *Pianist*  
FEB. 8 ISAAC STERN, *Violinist*  
MAR. 15 WITOLD MALCUZYNSKI, *Pianist*  
MAR. 22 IGOR STRAVINSKY, *Conductor*  
MAR. 29 TANYA URY, *Pianist*  
APR. 12 CLOSING CONCERT

## *Three Thursday Evenings*

*Promptly at 8:30 o'clock*

- JAN. 17 ARTHUR SCHNABEL, *Pianist*  
FEB. 21 MARIAN ANDERSON, *Contralto*  
MAR. 7 OSCAR LEVANT, *Pianist*

## *Fourteen Saturday Evenings*

*Promptly at 8:30 o'clock*

- NOV. 24 OPENING CONCERT  
DEC. 1 VLADIMIR HOROWITZ, *Pianist*  
DEC. 8 ORCHESTRAL PROGRAM  
DEC. 15 GERHARD KANDER, *Violinist*  
DEC. 22 LEON FLEISHER, *Pianist*  
JAN. 5 MAXIM SCHAPIRO, *Pianist*  
JAN. 19 ARTUR SCHNABEL, *Pianist*  
FEB. 9 ISAAC STERN, *Violinist*  
FEB. 23 MARIAN ANDERSON, *Contralto*  
MAR. 9 OSCAR LEVANT, *Pianist*  
MAR. 16 WITOLD MALCUZYNSKI, *Pianist*  
MAR. 23 IGOR STRAVINSKY, *Conductor*  
MAR. 30 TANYA URY, *Pianist*  
APR. 13 CLOSING CONCERT

## *Season Tickets Now On Sale*

Sherman, Clay & Co., Kearny and Sutter Sts., San Francisco, Zone 8. SUTTER 1331

WAR MEMORIAL OPERA HOUSE

NOVEMBER 23, 1945 • APRIL 13, 1946



*Nicholas Johnston*

MASTER PHOTOGRAPHER

SAN FRANCISCO

427 POST ST. HOTEL ST. FRANCIS

YUKON 2061

SUNDAY MATINEE, OCTOBER 7, at 2:15

# *Cavalleria Rusticana*

Opera in one act. Music by Pietro Mascagni.

Text by G. Targioni-Tozzetti and G. Menasci, adapted from a story by G. Verga.

## THE CAST

Santuzza, a village girl.....VIVIAN DELLA CHIESA  
Lola, wife of Alfio.....HERTA GLAZ  
Turiddu, a young soldier.....CHARLES KULLMAN  
Alfio, a teamster.....IVAN PETROFF  
Lucia, mother of Turiddu.....THELMA VOTIPKA

*Peasants and Villagers.*

**TIME AND PLACE:** The Present; Square in a Sicilian Village

# *I Pagliacci*

Opera in two acts. Music and Libretto by Ruggiero Leoncavallo.

## THE CAST

Canio (in the play "Punchinello"),  
master of the troupe.....RAOUL JOBIN  
Nedda (in the play "Columbine"), his wife.....LICIA ALBANESE  
Tonio (in the play "Taddeo"), the clown.....FRANCESCO VALENTINO  
Beppe (in the play "Harlequin").....ALESSIO DE PAOLIS  
Silvio, a Villager.....MACK HARRELL  
First Villager.....GEORGE TALLONE  
Second Villager.....W. VERNON SANDERS

*Peasants and Villagers.*

### CONDUCTOR

KURT HERBERT ADLER

### STAGE DIRECTOR

ARMANDO AGNINI

**TIME AND PLACE:** Feast of Assumption at Calabria, near Montalto

Act I: Afternoon

Act II: Evening

---

TICKETS FOR EXTRA PERFORMANCES  
AT OPERA BOX OFFICE, CITY OF PARIS

---

*Encores not permitted — Bell rings three minutes before curtain rises*

## The Story of "Cavalleria Rusticana"

Turiddu is heard singing the charms of Lola. Santuzza, discarded by Turiddu for Lola, seeks Lucia, mother of Turiddu, to whom she confides her betrayal. Lucia enters the church and Santuzza awaits Turiddu. He spurns her and departs with Lola. Santuzza reveals the unfaithfulness of Lola to Alfio, who vows to kill Turiddu. The villagers emerge from the church. Turiddu is challenged to a duel by Alfio. He bids farewell to his mother and follows Alfio. After a pause, a peasant rushes in with the cry "Turiddu is dead."



## The Story of "I Pagliacci"

### ACT I

Tonio appears before the curtain in a prologue telling of the performance to come as an actual occurrence. The curtain reveals the townspeople gathered to greet the arrival of the strolling players. The actors parade and Tonio is sharply reproved by Canio, chief of the troupe, for familiarity toward Nedda, Canio's wife. Players and peasants depart for an adjoining inn, leaving Tonio and Nedda after Canio warned that he will avenge any insult involving Nedda's affections. Nedda, who loves another, trembles at his words and sings to conceal her fears. Nedda repulses the advances of Tonio with a whip and he departs, vowing vengeance. Silvio, Nedda's lover, induces her to agree to flight with him. Tonio, overhearing, summons Canio but Silvio escapes unrecognized. Canio demands from Nedda the name of her lover but to no avail. Tonio whispers to Canio that the unknown will surely attend the performance and betray himself.

### ACT II

The comedy is about to begin and Nedda as Columbine, collecting money from the crowd, warns Silvio, who is present. Canio, distracted, stumbles through the lines of the play, again demanding from Nedda the name of her lover. She refuses, trying to put him off lightly as in the play. Canio, now beside himself with jealous rage, seizes a knife from the table and stabs Nedda to the heart. Silvio attempts to come to her aid and he, too, is slain by Canio. As the crowd stands horrified, Canio brings the play and the opera to a close with "The comedy is ended."



LADIES  
PLEASE  
REMOVE  
YOUR  
HATS

BEE & RAY  
GOMAN'S  
GAY 90'S  
555 PACIFIC AVE  
"ON THE OLD  
BARBARY COAST"  
CONTINUOUS  
"NAUGHTY  
NINETIES"  
ENTERTAINMENT

"Original Gibson Girl" drawn by Charles Dana Gibson—1904, for Collier's Weekly.





DIFFERENT SKINS

NEED DIFFERENT FOUNDATIONS

That is why Monteil created *Beauty Balm* and *Sensitone Lotion*—the one for dry or normal skins, the other for those who like a lighter foundation.

Either will keep you beautifully powdered without that powdery look, diffusing your rouge into subtle colors echoes of your own complexion. *Beauty Balm* in white, bronzé and muted rose. *Sensitone Lotion* in natural, sun tan and muted rose.



Germaine Monteil

TUESDAY NIGHT, OCTOBER 9, at 8:00

# *Die Walkure*

Opera in three acts. Music and text (in German) by Richard Wagner.

## THE CAST

Brunnhilde .....	HELEN TRAUBEL
Sieglinde .....	LILY DJANEL
Fricka .....	MARGARET HARSHAW
Siegmund .....	LAURITZ MELCHIOR
Wotan .....	HERBERT JANSSEN
Hunding .....	LORENZO ALVARY
Helmwige .....	ANITA RAGUSA
Gerhilde .....	THELMA VOTIPKA
Ortlinde .....	*MURIEL DEMERS
Siegrune .....	HERTA GLAZ
Rossweisse .....	*BRITTA ANDERSON
Waltraute .....	LORRAINE CALCAGNO
Grimgerde .....	CLARAMAE TURNER
Schwertleite .....	MARGARET HARSHAW

*\* San Francisco Opera debut*

### CONDUCTOR

WILLIAM STEINBERG

### STAGE DIRECTOR

HERBERT GRAF

### TIME AND PLACE: *Legendary*

Act I: Interior of Hunding's Hut in the Forest

Act II: A Wild and Rocky Pass

Act III: Rock of the Valkyries

---

TICKETS FOR EXTRA PERFORMANCES  
AT OPERA BOX OFFICE, CITY OF PARIS

---

*Encores not permitted — Bell rings three minutes before curtain rises*

## The Story of "Die Walkure"

NOTE: "Die Walkure" is the second of Wagner's "Der Ring des Nibelungen." In "Das Rheingold," prelude to the cycle, the Nibelunger Alberich steals the power-endowing ring forged from the Rheingold. Wotan, in turn, wrests it from Alberich but delivers it to the giant Fafner. Wotan has begotten nine immortal Valkyries who lead fallen heroes to Valhalla to fight the hordes of Alberich. He also begets the twins, Siegmund and Sieglinde, in union with an earth woman. It is their story that forms the subject of "Die Walkure."

### ACT I

Siegmund, driven into Hunding's hut by a terrible storm, is confronted by Sieglinde, Hunding's wife. Hunding, returning, observes the likeness between the two, and learns that Siegmund is the son of Walse, his mortal enemy. Sieglinde, who has conceived a passionate love for Siegmund, pours a sleeping potion in Hunding's goblet. She tells Siegmund her story of abduction and forced marriage to Hunding and of the sword, visible where it has been plunged into an ash tree by a one-eyed warrior and destined for him with strength to pull it forth. Comparing stories they find themselves to be brother and sister as well as lovers. Both are children of Walse who had plunged the sword, Nothung, into the tree for their deliverance. Siegmund tears the sword from its ashen sheath and clasping Sieglinde in his arms, carries her passionately away.

### ACT II

Wotan, who has decreed death for Hunding, so instructs Brunnhilde. But Fricka, his wife and guardian of the marriage vow, in a stormy scene avows that punishment should be visited upon Siegmund and Sieglinde guilty of adultery, and compels him to swear he will not protect his son. Wotan then commands Brunnhilde to protect Hunding and lead Siegmund to Valhalla. Brunnhilde vainly pleads Siegmund's cause. Siegmund and Sieglinde arrive fleeing from Hunding's vengeance. While Siegmund stands guard over the exhausted Sieglinde, Brunnhilde appears and, moved by his devotion, promises him victory despite Wotan's command. Hunding is heard approaching and Siegmund rushes to meet his attack. Wotan appears and with a stroke breaks his sword to splinters. Hunding thrusts Siegmund through the breast and in turn is killed by a scornful wave of Wotan's hand.

### ACT III

Brunnhilde implores aid for Sieglinde from the assembling Valkyries. But fearing the wrath of Wotan none dare offer it. Brunnhilde, giving Sieglinde the fragments of Siegmund's sword, bids her seek refuge in the forest wherein Fafner guards the ring there to await the birth of her expected child who shall be named Siegfried and conquer all. The outraged Wotan appears and sorrowfully announces his punishment of the disobeying Brunnhilde. Divested of her divinity she shall sleep on the mountain to become the bride of the first man who finds her. But he will build about her a magic circle of fire so that none but a hero may awaken her.

## Business eyes turn West—and widen!

Congestions of war, imposed upon our Western economy, serve usefully to "discover" the basic resources of the West, the capacity of the West to produce and manufacture, and the nearness of our Pacific Coast to the huge postwar markets surrounding the world's biggest waterway.

These facts, known here, now are being regarded with quickening appreciation elsewhere. Colored pins are being shifted west on boardroom wall maps in many a home office.

This Bank, for over eighty years associated with the sensible development of our Pacific Coast, offers two advantages to business and industry. First, our long-established offices in all three Pacific Coast states afford on-the-ground service fitted to each area. Second, our Foreign Exchange department is thoroughly familiar with market contacts throughout the Pacific Basin. For business with or on the Coast or through our ports into the Pacific, the established contacts and long experience of this Bank can be of definite value.

*Head Office: 400 CALIFORNIA STREET  
Mission Branch: 16TH & JULIAN AVENUE*

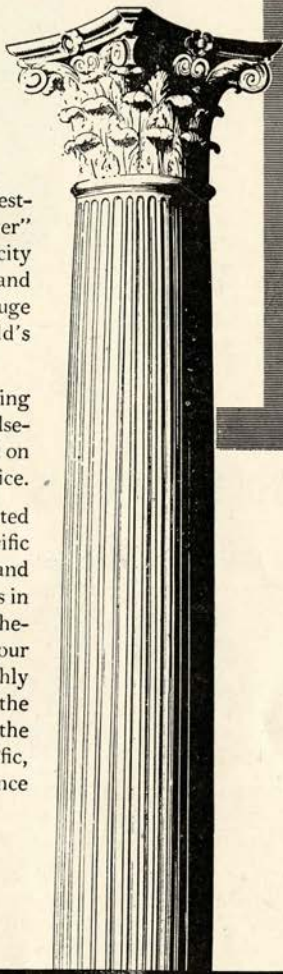
# THE BANK OF CALIFORNIA

NATIONAL ASSOCIATION

*Founded in 1864*

Member Federal Deposit Insurance Corporation

SAN FRANCISCO • PORTLAND • SEATTLE • TACOMA





*It Stands Alone*

## KORBEL BRUT IS **TOPS** IN AMERICAN CHAMPAGNE

Magazines which reach the most sophisticated audience in the United States unanimously give first place in American Champagnes to KORBEL BRUT  
WE didn't say it first! THEY DID!

"THE BEST AMERICAN CHAMPAGNE to date is KORBEL BRUT. Our guess is anyone would think it was imported."  
—Harper's Bazaar

"PROBABLY THE MOST CHAMPAGNE-LIKE domestic wine is KORBEL BRUT."  
—Cue Magazine

"THE OUTSTANDING AMERICAN CHAMPAGNE to date is KORBEL BRUT."  
—Town and Country

"EXTREMELY ENJOYABLE, bone-dry and clean-tasting."  
—The New Yorker

"AMONG THE FEW FINE CALIFORNIA CHAMPAGNES IS KORBEL BRUT—a special cuvee which has been made as dry as the dryest Champagnes for the English market."  
—St. Regis, Peacock Alley, The Ambassador, Plaza En Passant, The Savoyard, The Ritz Carlton, The Hampshire, The Sherry-Netherlands, Pierrot

**K O R B E L**    **BRUT**    **ROUGE**  
                         **SEC**        **PINK**

Distributed by

**TRADERS DISTRIBUTING CO.**  
314 FRONT STREET, SAN FRANCISCO, CALIFORNIA

**21 BRANDS, INC.**  
17 E. 52nd ST., NEW YORK CITY

# OPERA BOX HOLDERS

Season 1945

MR. AND MRS. GEORGE WASHINGTON BAKER, JR.  
MRS. GEORGE EDWIN BENNETT  
MR. AND MRS. CHARLES R. BLYTH  
MR. AND MRS. JAMES PARKS BRADLEY  
MR. AND MRS. JOHN DAVIS BRADLEY  
MR. AND MRS. ROY BRONSON  
MR. AND MRS. GEORGE T. CAMERON  
MR. AND MRS. JOHN B. CELLA  
MR. AND MRS. WILLIAM W. CROCKER  
MRS. FRANK P. DEERING  
MR. AND MRS. SIDNEY M. EHRMAN  
MR. AND MRS. MORTIMER FLEISHHACKER  
DR. AND MRS. FRANK R. GIRARD  
MR. AND MRS. JOSEPH T. GRACE  
MRS. CRESCENT PORTER HALE  
MRS. PRENTIS COBB HALE  
MR. AND MRS. CHARLES L. HARNEY  
MRS. I. W. HELLMAN  
MR. AND MRS. CLARENCE LORAN JOHNSTON

MR. AND MRS. ARTHUR DALE KING  
MRS. MARCUS S. KOSHLAND  
MRS. SAMUEL KNIGHT  
MRS. RICHARD MCCREERY  
MR. AND MRS. JULLIARD McDONALD  
MRS. FELIX MCGINNIS  
MR. AND MRS. FREDERICK W. McNEAR  
MR. AND MRS. GAETANO MEROLA  
MR. AND MRS. C. O. G. MILLER  
MRS. EPPS J. MILLER  
MR. AND MRS. KENNETH MONTEAGLE  
MRS. RYER NIXON  
MRS. ARLINE M. ROLKIN  
MRS. HENRY POTTER RUSSELL  
SAN FRANCISCO OPERA GUILD  
JUDGE AND MRS. M. C. SLOSS  
MRS. SIGMUND STERN  
MR. AND MRS. NION R. TUCKER  
MR. AND MRS. KARL C. WEBER

## IMPORTANT

### *Change in Opera Dates*

"DIE WALKURE" will be given Tuesday, Oct. 9,

Instead of Friday, Oct. 12

"BORIS GODOUNOFF" will be given Friday, Oct. 12,

Instead of Tuesday, Oct. 9

Ticket holders will please be guided by the name of the opera  
instead of the date.

**FERRARI**  **NICOLAUS**  
AND FORMER FIRM OF **TRAINER & PARSONS**

*Dispensing Opticians*

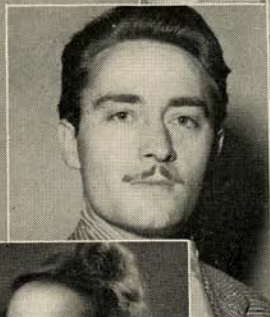
**444 POST  
SAN FRANCISCO**

**PISANI PRINTING & PUBLISHING CO.**

*Fine Printing*



700 MONTGOMERY STREET • PHONE SUtter 4772  
SAN FRANCISCO



CLARAMAE TURNER

ROBERT MILLS

KATHLEEN LAWLOR

CHARLES GOODWIN

EVELYN CORVELLO

GEORGE TALLONE

MURIEL DEMERS

HERBERT NYSTROM

LORRAINE CALCAGNO

ROBIN NELSON

BETTIE SANDERSON

# Artists of the San Francisco OPERA COMPANY



*Atop Nob Hill*

# ZEBRA ROOM

COCKTAILS  
LUNCH \* DINNER

An atmosphere of cultured intimacy where  
meals are better and enjoyment is enhanced  
by NELLE CALLAHAN at the  
Hammond Organ



## HUNTINGTON HOTEL

NOB HILL

1075 CALIFORNIA

EUGENE N. FRITZ, Managing Owner

### COLUMBIA CONCERTS, INC.

Presents

## "GREAT NAMES IN MUSIC"



*Appearing 1945 San Francisco Opera Season*

LICIA ALBANESE  
LORENZO ALVARY  
CHARLES KULLMAN

MARGARET HARSHAW  
LILY PONS  
RISE STEVENS



*Appearing San Francisco Opera Concert Series, 1945-1946*

HEIFETZ  
JUSSI BJOERLING  
JENNIE TOUREL  
ROSARIO and ANTONIO

RUDOLF SERKIN  
YEHUDI MENUHIN  
PAUL ROBESON  
HELEN TRAUBEL



COLUMBIA CONCERTS, Inc., 113 West 57th Street, New York

*San Francisco Representative, PAUL POSZ, War Memorial Opera House*

*Los Angeles Representative, L. E. BEHYMER, 415 Auditorium Building*



## SAN FRANCISCO TRADITION

### BEFORE THE OPERA

...Dine in the exquisite Garden Court

### AFTER THE OPERA

...Dance in the Rose Room to the music of

### DEL COURTNEY

and his orchestra



# The Palace Hotel

EDMOND A. RIEDER, General Manager

## FREE

### *Opera Broadcast Program*

☆ The San Francisco Opera Company's 23rd Annual Season is being broadcast over radio station KFRC.

To better enjoy the operas you are unable to attend, Safeway has prepared a 52-page souvenir broadcast program.

For your free Opera Program write Post Office Box 2189, San Francisco 26, California.



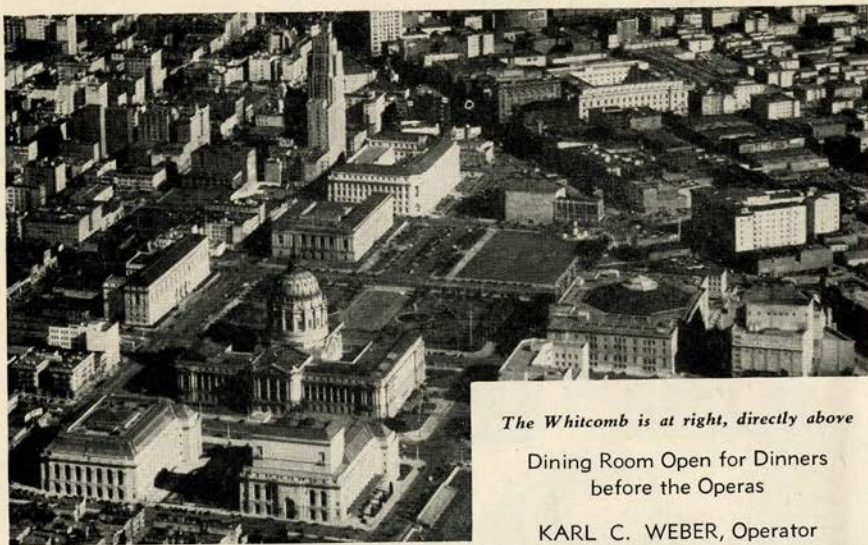
JOSEPH TISSIER  
ROSE AGNES HERSCH  
EVARISTO ALIBERTINI  
PAUL GUENTER

ELMA HEITMAN  
MARILYNN KING  
BIANCA BRUNI  
FREDERIC WILLIAMS

BETTIE SANDERSON  
AUGUSTO LORENZO  
BENJAMIN MARTIN  
ROBERT BRUCE MACKAY

LEO GALT  
MAX LORENZINI  
W. VERNON SANDERS  
PAUL LEIBER

# Artists of the San Francisco OPERA COMPANY



*The Whitcomb is at right, directly above*

Dining Room Open for Dinners  
before the Operas

KARL C. WEBER, Operator

SAN FRANCISCO'S LEADING HOTEL AT THE CIVIC CENTER

## HOTEL WHITCOMB

*Plan Today for  
Tomorrow*

**"PAY CASH and SAVE"**

**WEINSTEIN CO.**

• 1041 MARKET ST.

• 100 MARKET ST. • 1620 POLK ST.

• 615 MARKET ST. • 119 POST ST.

## HOW TO PRONOUNCE THEIR NAMES

LICIA ALBANESE	HERBERT JANSSEN	<i>Herbert Yahn'-senn</i>
<i>Lee'-chee-ah Ahl-bah-nay'-zay</i>	RAOUL JOBIN	<i>Rah-ool Zhoh-ban'</i>
LORENZO ALVARY	BRUNO LANDI	<i>Brewno Lahn'-dee</i>
<i>Lorenzo Ahl-yah'ry</i>	LOTTE LEHMAN	<i>Lotte Lay'-mahn</i>
ARMANDO AGNINI	LAURITZ MELCHIOR	<i>Lauritz Mell'-kee-or</i>
<i>Ar-mahn'-dow Ah-nee'nee</i>	GAETANO MEROLA	<i>Gah-yay-tahn'-oh Mare'-oh-lah</i>
SALVATORE BACCALONI	IVAN PETROFF	<i>Ee-yahn Pet-roff</i>
<i>Sahl-yah-tow'-ray Bach-ah-low'-nee</i>	EZIO PINZA	<i>Et'-see-oh Peen'-zah</i>
ETIENNE BARONE	LILY PONS	<i>Lee-lee Pawnce</i>
<i>Et-yehn Bah-row'-nay</i>	ANITA RAGUSA	<i>Anita Rah-goo'-sah</i>
FRANCES CASTELLANI	HILDE REGGIANI	<i>Hill-day Rah-jah'-nee</i>
<i>Frances Kah-stay-lahn'-ee</i>	KARL RIEDEL	<i>Karl Ree'-del</i>
GEORGE CEHANOVSKY	STELLA ROMAN	<i>Stay-lah Row-mahn'</i>
<i>George Chay-han-off'-skee</i>	ELEANOR STEBER	<i>Eleanor Stee'-burr</i>
VIVIAN DELLA CHIESA	RISE STEVENS	<i>Ree'-suh Stevens</i>
<i>Vivian Dell-lah-Kee-ay'-zah</i>	HELEN TRAUBEL	<i>Helen Trah'-oo-bell</i>
OTELO CERONI	FRANCESCO VALENTINO	<i>Francesco Vah-lenn-teen'-oh</i>
<i>Otello Chay-row'-nee</i>		
ANTONIO DELL'OREFICE		
<i>Antonio Dell-oh-reff'-ee-chay</i>		
ALESSIO DE PAOLIS		
<i>Ah-less'-see-oh Deh Pah'-oh-leece</i>		
LILY DJANEL		
<i>Lee-lee Zhan-nell</i>		
HERTA GLAZ		
<i>Hair-tah Glahz</i>		
FREDERIC JAGEL		
<i>Frederick Yay-gel</i>		

## BELFAST

★  
 Manufactured  
 by the makers  
 of  
**BELFAST**  
 Dry  
**GINGER ALE**  
 Famous  
 Since 1877



*Sparkling  
 Water*

**P**URE, wholesome and delightful to the taste, Belfast Sparkling Water is the ideal table beverage... it is *supreme* among the better mixers — heightens the flavor of other beverages and gives longer-lasting sparkle in the glass.

**BELFAST BEVERAGE CO.**  
 820 Pacific Avenue      DOuglas 0547      San Francisco



# ***Gantner*** ***Swimsuits***

***San Francisco's  
proudest and  
America's finest***

Top . . . Black Magic Nylon  
Sarong . . . very light and quick  
drying! One of many beautiful  
Gantner styles which have be-  
come famous.

**GANTNER & MATTERN CO.**

San Francisco • Chicago • New York

**KQW and CBS**

present

**PATRICE MUNSEL**

. . . lovely young soprano of  
the Metropolitan Opera . . .

on

**THE FAMILY HOUR**

every Sunday

2:00 - 2:30 p.m.

**KQW**

The Columbia Station  
for the San Francisco  
Bay Area

**740 on the dial**

**VISIT...**

The Cocktail Lounge  
of Distinctive  
Atmosphere

**CARDINAL  
RICHELIEU  
ROOM**

Van Ness at Geary  
"Just a Short Walk"

● Milan Lambert  
at the Organ

**RICHELIEU HOTEL**

Leopold Lerner, Manager

## GUARANTOR MEMBERS

of the

## SAN FRANCISCO OPERA ASSOCIATION

Mrs. L. C. Abbott  
S. L. Abbot  
C. Edgar Adams  
Mrs. C. R. Adams  
Albert N. Ades  
Mrs. John S. Adler  
Mrs. Wallace Alexander  
Lucy H. Allyne  
T. E. Armrose  
Thelma Anderson  
F. W. Armour  
Lawrence H. Arnstein  
Edward R. Bacon  
Mr. and Mrs. Frazer Bailey  
Elsa M. Baker  
Mr. and Mrs. George  
Washington Baker, Jr.  
Baldwin Piano Co.  
A. R. Baldwin  
B. A. Banker  
Mrs. John Thomas Barnett  
Peter Barnett  
J. F. Barrett  
Mrs. Edward F. Barron  
Irving Bartel  
Harriett Bathgate  
Dominic A. Bazzanella  
Mr. and Mrs. R. S. Beall  
Mr. and Mrs. F. N. Belgrano, Jr.  
Melvin Belli  
David Benioff  
Mrs. George Edwin Bennett  
Mrs. Charles H. Bentley  
Mrs. Walter H. Bentley  
Franklin L. Besley  
Elsie A. Best  
Dr. Tholow Binkley  
Mrs. James H. Bishop  
Newton Bissinger  
W. Harry Blatchly  
Louis Bloch

Mrs. Arthur L. Bloomfield  
Mr. and Mrs. Charles R. Blyth  
Mrs. Angus Gordon Boggs  
Mrs. Robert C. Bolton  
Mrs. F. E. Boyd  
Louise A. Boyd  
Mr. and Mrs. James Parks  
Bradley  
Mr. and Mrs. John Davis Bradley  
Mr. and Mrs. Walter C. Brauns  
G. Temple Bridgman  
Mrs. William Ellery Briggs  
Roy A. Bronson  
Mrs. John F. Brooke  
Julia Fox Brooke  
George W. Brooks  
Dr. LeRoy Brooks  
Arthur M. Brown, Jr.  
J. Arthur Brown  
James A. Brown  
Mr. and Mrs. Louis C. Brown  
Ralph Brown  
Walter D. Brown  
Mrs. E. E. Brownell  
Starr Bruce  
Frank J. Brucato  
Frank E. Buck  
Leonard W. Buck  
Thomas Buck  
Mr. and Mrs. F. Neil Buckley  
Daniel W. Burbank  
Mrs. Prentis T. Burtis  
Dr. and Mrs. Edmund Butler  
Mrs. Felix Butte  
Mrs. John R. Cahill  
Dr. William Otis Callaway  
Mr. and Mrs. George T. Cameron  
Lillian Campbell  
Estelle Carpenter  
Craig Carrier  
Kenneth Cassidy

Augustine Cazenave  
Mr. and Mrs. John B. Cella  
Selah Chamberlain, Jr.  
E. M. Chandler  
Drew Chidester  
Charles A. Cristin  
John J. Cimino  
Mrs. Baylies V. Clark  
Maud H. Clark  
S. G. Clark  
Mrs. Tobin Clark  
Capt. and Mrs. Robert A. Clarke  
Mrs. John P. Coghlan  
Mr. and Mrs. George D. Cohn  
Mrs. Max M. Cohn  
Mrs. Colbert Coldwell  
Persis H. Coleman  
H. D. Collier  
Mr. and Mrs. Jesse C. Colman  
J. J. Coney  
Mary R. Conlin  
Dr. and Mrs. Frederick C. Cordes  
Arthur S. Crites  
Carrie Bell Crocker  
Mr. and Mrs. W. W. Crocker  
George E. Crothers  
Thomas B. Crowley  
Ralph K. Davies  
Alvin Davis  
Mr. and Mrs. Stuart Davis  
Florence E. Dean  
Mrs. Charles J. Deering  
Mrs. Frank P. Deering  
Mrs. George deLatour  
Dr. Joseph Del Genovese  
Mrs. Walter A. de Martini  
Frank H. Denman  
John Michael Desch  
Richard Detert  
Mrs. Robert T. Devlin  
Mrs. B. J. Dietrich



### Orchids

from Podesta & Baldocchi,  
America's Most Famous  
Florist, make any occasion  
more festive.

*Podesta & Baldocchi*

America's Most Famous Florists

Telephone: SUTTER 6200

224 GRANT AVENUE, SAN FRANCISCO



# ATTIL HARP SCHOOL

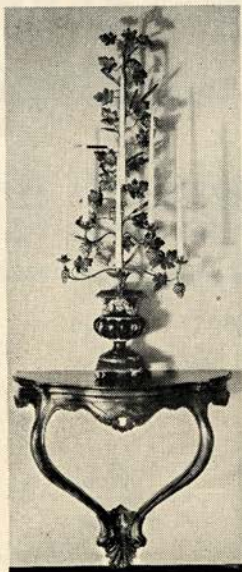
KAJETAN ATTIL, formerly 28 years First Harpist with the  
San Francisco Symphony and Opera Association

INSTRUCTION IN HARP  
HARPS — MUSIC AND STRINGS

1030 BUSH STREET, SAN FRANCISCO

PHONE: ORdWAY 6367

*Artist Students available for engagements*



*Fine Antiques*



*Excellent  
Craftsmanship*



## K. H. LENGFELD

*Interior Decorator*



1409 SUTTER STREET, SAN FRANCISCO

## GUARANTOR MEMBERS—Continued

- |  |  |   |
|--|--|---|
| <p>Mrs. L. W. Dinkelspiel<br/>Mrs. Samuel L. Dinkelspiel<br/>N. S. Dodge<br/>Mrs. Robert Dollar II<br/>Mrs. Leo Domb<br/>O. Dewey Donnell, Jr.<br/>Katharine Donohoe<br/>Mrs. F. A. Dorn<br/>D. C. Dorward<br/>F. M. Dorward<br/>R. E. Doyle<br/>Elsie L. Dunbar<br/>Mrs. Frank H. Dunne<br/>Mrs. Charles Dunphy<br/>Mrs. Dunne Dutton<br/>Capt. and Mrs. James J. Dwyer, Jr.<br/>Dr. and Mrs. George Ebright<br/>Dr. Muriel E. Edwards<br/>Albert L. Ehrman<br/>Alexis L. Ehrman, Jr.<br/>Mrs. Alfred Ehrman<br/>Mr. and Mrs. Sidney M. Ehrman<br/>Wilfred Eldred<br/>H. A. Ellis<br/>John W. Elwood<br/>Mark C. Elworthy<br/>G. Epstein<br/>Mrs. Milton H. Esberg<br/>Milton H. Esberg, Jr.<br/>L. Ets-Hokin<br/>Dr. and Mrs. Harold K. Faber<br/>F. C. Fabry<br/>Arthur C. Farlow<br/>Paul I. Fagan<br/>Alfred Fasani<br/>Lionel B. Feigenbaum<br/>James E. Fickett<br/>Mrs. Marshall Fisher<br/>James Fisher-Northrop<br/>Carl Fleschler<br/>Mr. and Mrs. Mortimer Fleishhacker<br/>John F. Forbes<br/>Mr. and Mrs. Edward T. Ford<br/>Francis F. Forsell<br/>Mr. and Mrs. T. G. Franck<br/>Mrs. Jennie S. Frank<br/>Lt. and Mrs. Richard L. Frank<br/>Dr. Charles L. Freytag<br/>Mr. William Fries<br/>Kenneth E. Fultz-Vayette<br/>Nelly Gaffney<br/>Mr. and Mrs. Maurice A. Gale<br/>L. Galtie<br/>Gordon L. Gates<br/>Mr. and Mrs. Henry Gede, Jr.<br/>Dr. Ernst Gehrels<br/>Alvin Gerlack<br/>Mark L. Gerstle<br/>Mrs. D. Ghirardelli<br/>D. Lyle Ghirardelli</p> | <p>Dr. Arthur Collis Gibson<br/>Maud M. Gibson<br/>George B. Gillson<br/>Dr. and Mrs. Frank R. Girard<br/>Mr. and Mrs. Harry F. Gittings, Jr.<br/>J. Harry Goff<br/>Maurice L. Goldman<br/>Mr. and Mrs. Louis S. Goldstein<br/>Lutie D. Goldstein<br/>Jack Gomperts<br/>Mrs. Thomas Gonda<br/>Lorraine C. Goodman<br/>Dr. William A. Gorman<br/>Mr. and Mrs. Joseph T. Grace<br/>Mrs. Joseph D. Grant<br/>Mrs. Richard Gray<br/>Mrs. Maurice S. Greenberg<br/>Mr. and Mrs. Stuart N. Greenberg<br/>Mrs. F. S. Greenlee<br/>Mrs. Hayes Griffin<br/>Mark E. Guerin<br/>Mr. and Mrs. Berthold Guggenhime<br/>Gustav G. Gumpel<br/>Mrs. Alfred S. Gunn<br/>Madeleine Haas<br/>Mrs. Crescent Porter Hale<br/>Marshal Hale<br/>Mrs. Prentis Cobb Hale<br/>Prentis C. Hale, Jr.<br/>R. B. Hale<br/>Herbert E. Hall<br/>Eminel P. Halsted<br/>Marshall S. Hanrahan<br/>Mr. R. C. Hansen<br/>Mrs. Robert D. Harden<br/>W. G. Harmon<br/>Mr. and Mrs. Charles L. Harney<br/>Irving F. Harris<br/>Gregory A. Harrison<br/>Maurice E. Harrison<br/>Mrs. Henry H. Hart<br/>S. M. Haslett<br/>Mrs. Russell P. Hastings<br/>Mrs. Juanita O. Hatch<br/>Mr. and Mrs. Elystus Hayes<br/>Mrs. Timothy Hayes<br/>A. W. Hazen<br/>Mrs. E. S. Heller<br/>Mr. and Mrs. Walter D. Heller<br/>Walter S. Heller<br/>Mrs. I. W. Hellman<br/>Mrs. Robert Henderson<br/>Dr. and Mrs. Ernest E. Hessing<br/>Mr. and Mrs. Stanley Hiller<br/>Mr. and Mrs. Leslie W. Hills<br/>Harry H. Hilp<br/>J. H. Hinrichsen<br/>Barnard J. Hirsch<br/>George H. Holt<br/>Osgood Hooker<br/>Mr. and Mrs. L. Arundel Hopkins<br/>Mrs. Samuel Hopkins</p> | <p>Robert A. Hornby<br/>Mrs. H. A. Hornlein<br/>Kurt Huber<br/>Robert Hulbert<br/>Dr. Harvey S. Hunsberger<br/>Marian Huntington<br/>Mrs. William Hyman<br/>Mrs. James Irvine<br/>Dr. S. Nicholas Jacobs<br/>R. J. Jansen<br/>Mr. and Mrs. Louis Jefferys<br/>Otto Jeidels<br/>Mrs. Charles A. Jewel<br/>Mr. and Mrs. Clarence Loran Johnston<br/>Ector R. Johnson<br/>Mrs. Sophie Johnson<br/>Major General Kenyon A. Joyce<br/>Mrs. Chester W. Judson<br/>Jean Juillard<br/>Mrs. Ira Kahn<br/>Mr. and Mrs. Samuel Kahn<br/>Henry J. Kaiser<br/>Walter F. Kaplan<br/>S. Kauffman<br/>Mr. and Mrs. Edward D. Keil<br/>H. C. Kelsey<br/>Charles Kendrick<br/>Easton Kent<br/>Mr. and Mrs. Marion H. Kent<br/>Mr. and Mrs. Arthur Dale King<br/>Percy L. King<br/>Dr. John J. Kingston<br/>John E. Kinney<br/>R. W. Kinney<br/>Mrs. Josephine R. Kleinjung<br/>Paul L. Kleinsorge<br/>Mrs. William E. Kleinsorge<br/>Robert L. Kline<br/>Mrs. Samuel Knight<br/>Caroline Korb<br/>Elsa R. Korb<br/>Mrs. Jesse Koshland<br/>Mrs. Marcus S. Koshland<br/>Frederick J. Koster<br/>Mrs. C. M. Kretchmer<br/>Dr. Henry M. Kreutzmann<br/>Mr. and Mrs. E. V. Krick<br/>Gus Kroesen<br/>Theodore Kroesen<br/>Esther Kuenz<br/>Gustave Lachman<br/>Mrs. Albert G. Lang<br/>Mrs. Philip V. H. Lansdale<br/>Mrs. Charles G. Lathrop<br/>Mrs. H. M. Lawrence<br/>L. H. Lazarus<br/>Edwin Leitch<br/>Leopold Lerner<br/>John A. Lesoine<br/>Mr. and Mrs. Paul Levey<br/>Robert L. Levin</p> |
|--|--|---|

# CLAIRE BROWN

278

## NEW HATS FOR FALL

POST ST.

# ADELE MORAN

INFANTS AND CHILDREN'S WEAR  
EXCLUSIVELY

Formerly with H. Liebes & Co.

18 Tillman Place

Next door to Temple Bar Tearoom



---

---

THE SAN FRANCISCO BALLET GUILD  
Mrs. Juilliard McDonald, Pres.

*Announces*

# *San Francisco Ballet*

WILLIAM CHRISTENSEN  
*Artistic Director*

HAROLD CHRISTENSEN  
*Ballet School Director*

REYNOLD WIGGINS  
*Business Manager*

*in their*

## *Third Annual Holiday Ballet Season*

*Children's Christmas Matinee*

SUNDAY, DEC. 23

### *Gala Holiday Evenings*

WEDNESDAY - - - - - DEC. 26

THURSDAY - - - - - DEC. 27

### **WAR MEMORIAL OPERA HOUSE**

STOCKTON - - - - - FRIDAY, DEC. 28

SACRAMENTO - - - - - SATURDAY, DEC. 29

OAKLAND - - - - - SUNDAY, DEC. 30

The Ballet leaves for their eastern tour on Feb. 1st  
returning May 1st

*for the*

## *Spring Ballet Homecoming*

(Date to be announced)

*Tickets for Holiday Ballet On Sale Normandy Lane Box Office. EX 8585*

---

---

## GUARANTOR MEMBERS—Continued

- J. B. Levison  
 Azro N. Lewis  
 Mrs. A. J. Lewthwaite  
 Mrs. Samuel Lilienthal  
 P. N. Lilienthal  
 Mr. and Mrs. William J. Lindenberger  
 F. L. Lipman  
 Mrs. Norman B. Livermore  
 Lawrence Livingston  
 James K. Lothead  
 George D. Lovdick  
 J. W. Longe  
 Louis R. Lurie  
 Carl D. Lovotti  
 James Rowland Lowe  
 Mrs. A. D. Lowengart  
 Mrs. A. J. Lowrey  
 Edmunds Lyman  
 Edna May Lyon  
 James W. McAlister  
 Mrs. T. R. McCarron  
 Mr. and Mrs. A. M. McCarty  
 Albert Connell McCary  
 Mrs. Wm. H. McCormick  
 Mrs. Richard S. McCreery  
 Mr. and Mrs. Juilliard McDonald  
 Mrs. Mark L. McDonald  
 Mrs. John McGaw  
 Mrs. Felix S. McGinnis  
 Mrs. Lacy Maclean  
 Mrs. Alfred McLaughlin  
 Mrs. Clarissa McMahon  
 Dean Brown McNealy  
 Mr. and Mrs. F. W. McNear  
 Mrs. George P. McNear  
 Mr. and Mrs. Victor Maas  
 Mrs. A. MacDonald  
 Mr. and Mrs. John B. Mackinlay  
 Marshall P. Madison  
 Mr. and Mrs. Grover A. Magnin  
 F. Bruce Maiden  
 Mrs. J. W. Mailliard, Jr.  
 Mr. and Mrs. Joseph A. Mancini  
 A. F. Manspeaker  
 George M. Mardikian  
 Dorothy S. Marion  
 Mr. and Mrs. Randolph Wyatt Martenet  
 Edward Martin  
 A. C. Mattei  
 Mrs. Jack Maxfield  
 Dr. Alice F. Maxwell  
 Mr. and Mrs. Harry O. Maxwell  
 Evelyn Mendessolle  
 Mr. and Mrs. Gaetano Merola  
 Mrs. H. C. Merritt, Jr.  
 Mrs. Julian J. Meyer  
 Olga M. Meyer  
 Merwin A. Meyers  
 Mr. and Mrs. Van Vissing Midgely  
 Mr. and Mrs. C. O. G. Miller  
 Mrs. Epps J. Miller  
 Mrs. Maxwell C. Milton  
 Henrietta Moffat  
 Mr. and Mrs. Edward F. Moffatt  
 James K. Moffitt  
 Charles W. Moisson  
 Mario Mondin  
 Mr. and Mrs. Kenneth Monteagle  
 Mr. and Mrs. Paioe Monteagle  
 Frederick H. Montgomery  
 Mrs. Joseph A. Moore  
 A. C. Morici  
 Marion Morris  
 Mrs. H. D. Mortenson  
 Guido J. Musto  
 Laura Musto  
 Marion Naffziger  
 E. M. Nagel  
 Mr. and Mrs. Ralph R. Nelson  
 Julia M. Neppert  
 Hugo D. Newhouse  
 Dr. and Mrs. Alfred Newman  
 Richard C. Newmeyer  
 John Francis Neylan  
 George W. Nickel  
 Mrs. Ryer Nixon  
 Harry Ogilvie  
 Carl F. Ohliger  
 Benjamin J. Older  
 Mr. and Mrs. Edwin Letts Oliver  
 George R. Orme  
 Dr. B. H. Page  
 Charles R. Page  
 Mrs. S. H. Palmer  
 T. B. Palmer  
 Lorriene Parisen  
 Mrs. Henry Passow  
 Dr. Sadie D. Patek  
 Gertrude Pauson  
 Mrs. Oscar Butler Perry  
 Howard Peterson  
 George W. Phillips, Jr.  
 Mrs. Margaret A. Phillips  
 Mrs. Herman Phleger  
 Tecla Pieper  
 Mr. and Mrs. G. Pisani  
 Mrs. H. D. Pischel  
 A. Poladian  
 Mrs. Paul Posz  
 Mrs. Ashton H. Potter  
 Mr. and Mrs. Stanley Powell  
 Colonel John Sedgwick Pratt  
 Walter G. Preddy  
 Dr. Edward Purcell  
 Mr. and Mrs. John B. Quigley  
 Mrs. Carl Raiss  
 Mrs. Lloyd F. Reighley  
 Dr. Ralph A. Reynolds  
 Neville J. Rich  
 H. A. Richardson  
 Mrs. H. W. Richards  
 Mrs. Robert Ritchie  
 Harrison S. Robinson  
 Dr. Frank H. Rodin  
 Mrs. N. Rogers  
 Arline Miller Rolkin  
 Colonel Robert A. Roos  
 John N. Rosekrans  
 Leland S. Rosener  
 Alexander Ross  
 Donald L. Ross  
 Edmund A. Rossi  
 Mrs. Angela Wing Roth  
 Mrs. William P. Roth  
 John Rothschild  
 Ken F. Royce  
 Mohr M. Rubin  
 Frank K. Runyon  
 Mrs. A. S. Russell  
 Michael J. Ryan  
 Charles B. Sanders  
 Robert H. Scanlon  
 Carl Schaubye  
 Else Schilling  
 Dr. Walter Schilling  
 George B. Schirmer  
 Dr. G. D. Schoonmaker  
 Mr. and Mrs. Albert E. Schwabacher  
 Mrs. Frank Schwabacher  
 James H. Schwabacher  
 Mrs. Louis A. Schwabacher  
 Mr. and Mrs. Harry S. Scott  
 Dr. Henry W. Scott  
 Marcella C. Sedgley  
 Albert Seligson  
 Mr. and Mrs. R. H. Shainwald  
 Mr. and Mrs. R. S. Shainwald  
 Mrs. Nelson T. Shaw  
 Fred R. Sherman  
 Mr. and Mrs. Ray Simonds  
 R. O. Simon  
 Mrs. Norman J. Sinclair  
 Mrs. Edgar Sinton  
 Genevieve Six  
 Charles W. Slack  
 Mrs. Leon Sloss  
 Judge and Mrs. M. C. Sloss  
 Stanley C. Smallwood  
 Edward J. Smiddy  
 Mr. and Mrs. Charles Watt Smith  
 DeLancey Smith  
 Jack Soderlund  
 George Willard Somers  
 Mr. and Mrs. Herbert L. Sommer  
 Fred H. Spiess  
 Mrs. E. B. Stanwood  
 G. A. Starkweather  
 Glen C. Stater  
 Mrs. Harold S. Stein  
 Ralph J. A. Stern  
 Mrs. Sigmund Stern  
 Claude Albon Stichl  
 Dr. John Philip Strickler  
 John Robert Strickler  
 Benka Strickler  
 Lieut. C. W. Sudderth  
 Walter H. Sullivan  
 E. J. Sultan  
 Bert O. Summers  
 Mrs. Alfred Sutro  
 Louis Sutter  
 Ernest J. Sweetland  
 Mrs. Andrew B. Talbot  
 Dr. W. R. Taylor  
 Charles Tesseyman  
 George C. Thierbach  
 B. Wade Thompson  
 Mrs. Myron I. Thomas  
 William Timson  
 C. R. Tobin  
 Mrs. Edward Topham, Jr.  
 Mr. and Mrs. Ernest J. Torregano  
 Dr. and Mrs. H. G. Trimble  
 Mrs. Alfred Tubbs  
 Mr. and Mrs. Nion R. Tucker  
 Mr. and Mrs. Daniel Volkman  
 Dr. E. P. M. Von Gehren  
 Mrs. Norman L. Waggoner  
 George Wagner  
 Mrs. Willis J. Walker  
 Morton Wallace  
 Whitney Warren  
 Mr. and Mrs. Karl C. Weber  
 Michel D. Weill  
 Lieut. Comdr. Nat. S. West  
 Dr. and Mrs. H. M. Weyrauch  
 Anna Louise White  
 Bonnie Whitcomb  
 Lieut. and Mrs. Fred Whitman  
 William A. P. White  
 George B. White  
 Mrs. Millard C. White  
 Mrs. Frederick A. Wickett  
 Robert L. Wiel  
 Mr. and Mrs. Brayton Wilbur  
 Charles T. Williams  
 Mrs. Selden Williams  
 Stephen Williams  
 Lt. W. F. Willmette  
 Mrs. J. L. Wolf  
 Mr. and Mrs. Harold L. Wright  
 Barbara Young  
 Dwayne G. Young  
 Mrs. V. Zaruba  
 J. D. Zellerbach  
 Edgar T. Zook  
 Kenneth C. Zwerin

---

# BUY WAR BONDS AND STAMPS

---



## ALBERT DAINI

*Distinctive*

**DRAPERIES**

**UPHOLSTERING**

This table as illustrated  
is one of our own creations  
made in our own shop.

1529 PINE STREET NEAR POLK • ORDWAY 6316

RUSSIAN *Atmosphere*

RUSSIAN *Music*

RUSSIAN *Food*

# BALALAIKA

Russian Restaurant

960 Bush St., S.F.  
Tel. OR. 8976

*Cocktails · Dinners*  
*Gypsy Music*

D. Dee, Manager



## Alioto's FISH GROTTO

Phil Rubino  
Manager

**STEAKS - CHOPS**

ALSO SERVED



No. 8 Fisherman's Wharf  
San Francisco

Open till 2 a.m.  
Saturdays 3 a.m.

# SAN FRANCISCO OPERA GUILD, INC.

Mrs. ROGER D. LAPHAM, JR., *Chairman*

Mrs. JOHN PHILLIP COGHLAN, JR., *Vice-Chairman*

Mrs. STANLEY POWELL, *Vice-Chairman*

Mrs. FREDERICK WHITMAN, *Secretary*

MR. JERD SULLIVAN, *Treasurer*

## Members

- Mrs. Lloyd S. Ackerman  
 Mr. and Mrs. Arthur C. Adams  
 Mr. and Mrs. C. Edgar Adams  
 Mrs. John S. Adler  
 Mrs. Alexander Albert  
 Mrs. Douglas Alexander  
 Mrs. Wallace M. Alexander  
 Miss Edith W. Allyne  
 Miss Lucy H. Allyne  
 Mrs. R. M. Alvord  
 Mr. T. E. Ambrose  
 Mrs. Berrien Anderson  
 Miss Margaret Andrews  
 Mrs. Leonora Wood Armsby  
 Miss Lillian Armsby  
 Mr. Noel T. Arnold  
 Dr. Charlotte C. Baer  
 Mrs. Horace S. Baker  
 Mrs. George Washington Baker, Jr.  
 Mrs. William P. Baker  
 Mrs. Edward F. Barron  
 Mrs. R. M. Barthold  
 Mrs. Edward Otis Bartlett  
 Mrs. F. Bauden  
 Mrs. Samuel Bauer  
 Mrs. Charles Beardsey  
 Mr. S. D. Bechtel  
 Mrs. Julian Palmer Beek  
 Dr. Bernard C. Begley  
 Mrs. Reed J. Bekins  
 Mr. and Mrs. F. N. Belgrano, Jr.  
 Mrs. George Edwin Bennett  
 Mrs. G. Grace Benoit  
 Mrs. Charles H. Bentley  
 Mrs. Walter H. Bentley  
 Miss Jessie E. Benton  
 Mrs. Dikrian M. Berberian  
 Mrs. E. Bianco  
 Dr. and Mrs. Tholow Binkley  
 Mrs. James Arthur Bishop  
 Mrs. James Hall Bishop  
 Mrs. Charles N. Black  
 Miss Jennie M. Blair  
 Miss Phyllis Bliss  
 Mr. Louis Bloch  
 Miss Ruth V. Bloch  
 Mr. and Mrs. Charles R. Blyth  
 Mrs. Angus Gordon Boggs  
 Mr. and Mrs. Harold W. Bonner  
 Mrs. M. A. Bowen  
 Mrs. F. H. Bowles  
 Miss Louise A. Boyd  
 Miss Nina Boyle  
 Mrs. James Parks Bradley  
 Mrs. John D. Bradley  
 Mrs. W. C. Brauns  
 Mrs. A. F. Bray  
 Mrs. John N. Breeden  
 Miss Marie Brewer  
 Mrs. William Briggs  
 Mrs. L. H. Brinck  
 Miss Bogardus Brodt  
 Mrs. Julia Fox Brooke  
 Mr. Arthur M. Brown, Jr.  
 Mrs. Cabot Brown  
 Mrs. Hilyer Brown  
 Mr. and Mrs. James Brown  
 Mrs. Walter D. Brown  
 Dr. Walter H. Brown  
 Mr. Frank J. Brucato  
 Mrs. Starr Bruce  
 Mr. Starr Bruce  
 Mr. Leo Bruck  
 Mrs. B. J. Brun  
 Dr. Edward John Buckley  
 Mrs. Edward J. Buckley  
 Mr. and Mrs. F. Neil Buckley  
 Mrs. Edna W. Buckwalter  
 Mrs. William J. Bultmann  
 Mrs. Robert B. Burroughs  
 Mrs. Arthur B. Cahill  
 Mr. Lewis Callaghan  
 Dolores Calles  
 Dr. William Otis Calloway  
 Mr. George T. Cameron  
 Major C. J. Carey  
 Mr. Russell Carpenter  
 Mrs. N. Casenave  
 Mrs. John Casserly  
 Mrs. A. L. Chickering  
 Mr. Drew Chidester  
 Madame Clara  
 Mrs. Tobin Clark  
 Mr. R. A. Cleaveland  
 Mr. Newton Booth Coghlan  
 Mr. John P. Coghlan  
 Mrs. John P. Coghlan  
 Mrs. John P. Coghlan, Jr.  
 Mrs. Betty Cohn  
 Mrs. Max Cohn  
 Mrs. Colbert Coldwell  
 Miss Persis H. Coleman  
 Mr. and Mrs. Waldo S. Coleman  
 Mr. H. D. Collier  
 Mrs. Jesse C. Colman  
 Mr. Joseph J. Coney  
 Miss Mary R. Conlin  
 Mrs. W. B. Cope  
 Mrs. B. Hardin Corbin  
 Dr. and Mrs. Frederick C. Cordes  
 Miss Mary Cowerd  
 Miss Mona Crellin  
 Mr. Templeton Crocker  
 Mr. William W. Crocker  
 Judge George E. Crothers  
 Mrs. John D. Crummev  
 Mrs. Emile F. Cuenin  
 Mrs. Leon Cuenin  
 Miss Peggy Cunningham  
 Miss Martha Curtis  
 Mr. and Mrs. O. K. Cushing  
 Mrs. Walter R. Cusick  
 Mrs. Chester Dahl  
 Mrs. Marie Hicks Davidson  
 Miss Florence Dean  
 Mrs. Charles J. Deering  
 Mrs. Frank P. Deering  
 Mrs. Georges deLatour  
 Mrs. S. T. DeLee  
 Mrs. Arthur J. DeLormier  
 Mr. Frank H. Denman  
 Mr. and Mrs. John Michael Desch  
 Mrs. Donald Dickey  
 Mrs. B. J. Dietrich  
 Mrs. Lloyd W. Dinkelspiel  
 Mrs. Samuel W. Dinkelspiel  
 Mr. and Mrs. Dewey Donnell  
 Miss Katharine Donohoe  
 Mrs. Warrington Dorst  
 Mrs. Paul M. Downing  
 Mrs. Frank B. Dray  
 Mrs. H. B. Drescher  
 Mrs. Lambert Dunbar  
 Mrs. Charles Dunpy  
 Mrs. Dunn Dutton  
 Mrs. Charles R. Eaton  
 Dr. Muriel E. Edwards  
 Mr. C. Wesley Edwards  
 Mr. Philip Ehrlich  
 Mrs. Alfred Ehrman  
 Mrs. Sidney Ehrman  
 Miss Lucile Eising  
 Mrs. Milton H. Esberg  
 Miss Marian W. Ewes  
 Mrs. Harold E. Faber  
 Mr. Lionel B. Feigenbaum  
 Mrs. Walter Filer  
 Mrs. Marshall Fisher  
 Mrs. R. M. Fitzgerald  
 Mrs. William M. Fitzhugh  
 Mr. Charles Flammer  
 Mrs. Herbert Fleishhacker, Jr.  
 Mrs. Mortimer Fleishhacker, Jr.  
 Mrs. James L. Flood  
 Mrs. B. C. Flood  
 Mrs. John F. Forbes  
 Mrs. Bernard W. Ford  
 Mr. and Mrs. Edward T. Ford  
 Mrs. W. Parmer Fuller, Jr.  
 Mrs. W. Parmer Fuller III  
 Mrs. Reed Funsten  
 Mr. Angelo Fusco  
 Mrs. Nellie Gaffney  
 Mrs. Vallejo Gantner  
 Mrs. Alfred Ghirardelli  
 Mr. D. Lyle Ghirardelli  
 Dr. and Mrs. Thomas A. Gibson  
 Miss Amelie Gier  
 Mrs. Frank Girard  
 Dr. Frank Girard  
 Mrs. Harry F. Gittings, Jr.  
 Mrs. J. H. Glide  
 Mrs. Henry Goldstein  
 Miss Lutie Goldstein  
 Mrs. A. H. Goldstone  
 Mr. Jack Gomperts  
 Miss Jane Goodfellow  
 Miss Lorraine C. Goodman  
 Mrs. Joseph Grace  
 Mrs. James Graham  
 Mrs. Joseph D. Grant  
 Mrs. Spencer Grant  
 Mrs. Horace Gray  
 Mr. and Mrs. Stuart N. Greenberg  
 Mrs. Frederick L. Greenlee  
 Mrs. Berthold Guggenhieme  
 Mrs. Gustav Gumpel  
 Mrs. Morgan A. Gunst  
 Miss Rhoda Haas  
 Mrs. Walter A. Haas  
 Mrs. Walter A. Haas, Jr.  
 Miss Ethel Hager  
 Mrs. Randolph Hale  
 Mr. R. B. Hale  
 Mrs. William L. Halfpenny  
 Mrs. John Lindsay Hanna  
 Mrs. Richard J. Hanna  
 Mrs. Robert D. Harden  
 Mrs. L. W. Harris  
 Mrs. Russell Hastings  
 Mrs. Eulystus Lyon Hayes  
 Mrs. Timothy Hayes  
 Mr. A. W. Hazen  
 Mrs. Richard Heimann  
 Mrs. E. S. Heller  
 Mr. Walter D. Heller  
 Mr. Walter S. Heller  
 Mrs. Frederick Hellman  
 Mrs. I. W. Hellman  
 Mrs. Barbara Urba Hendel  
 Mrs. Wellington S. Henderson  
 Mrs. A. W. Hewlett  
 Mr. Benjamin H. Hicklin  
 Miss Ann Hill  
 Mrs. Fentress Hill  
 Mrs. Harold Hill  
 Mrs. Harry Hill  
 Mrs. Stanley Hiller  
 Mr. and Mrs. Harry H. Hilp  
 Mrs. A. F. Hockenbeamer  
 Mrs. Clifford P. Hoffman  
 Mrs. Osgood Hooker  
 Mrs. Robert Hotte  
 Mrs. Thomas Carr Howe, Jr.  
 Miss Mina B. Hughes  
 Mrs. Thomas R. Hughes  
 Miss Betty V. Humphreys  
 Mrs. T. B. Hunter  
 Marian P. Huntington

## OPERA GUILD MEMBERS—Continued

Mrs. John Power Hutchins  
 Mrs. James Irvine  
 Mrs. James Jackman  
 Dr. S. Nicholas Jacobs  
 Mr. R. J. Jansen  
 Mr. Harold I. Johnson  
 Mrs. Otis Johnson  
 Mrs. Walter S. Johnson  
 Mrs. Ivar Johnson  
 Mrs. Clarence Loran Johnston  
 Dr. Herbert G. Johnstone  
 Mrs. Elizabeth Jorgeneel  
 Mrs. Henry Kaiser  
 Mr. Ben C. Keator  
 Mrs. Charles J. Keenan  
 Mrs. Edward D. Keil  
 Mrs. T. Henshaw Kelly  
 Mr. Charles Kendrick  
 Mrs. Easton Kent  
 Mrs. Donald Kieffer  
 Mrs. Henry S. Kiersted  
 Mrs. W. K. Kilpatrick  
 Mr. Percy L. King  
 Mr. A. J. Kirkpatrick  
 Mrs. J. R. Kleinjung  
 Mrs. John B. Knox  
 Miss Caroline Korbel  
 Mrs. Abraham Koshland  
 Mrs. Daniel Koshland  
 Mrs. Marcus S. Koshlund  
 Miss Frances Kosta  
 Mr. Frederick J. Koster  
 Mr. Gus Kroesen  
 Mrs. H. N. Kuechler, Jr.  
 Esther Kuenz  
 Mrs. Breck Lamont  
 Mrs. Albert George Lang  
 Mrs. Philip V. H. Lansdale  
 Honorable and Mrs. Roger D.  
 Lapham  
 Mrs. Roger D. Lapham, Jr.  
 Mrs. Charles G. Lathrop  
 Mrs. T. M. Lauridsen  
 Mrs. Claude Lazard  
 Miss Rena Lazelle  
 Mrs. A. Lendle  
 Mrs. Louis Lengfeld  
 Mr. Felix A. Lenhart  
 Mrs. John A. Lesoine  
 Miss Elvira LeStrange  
 Mrs. Azro N. Lewis

Mrs. Sidney Liebes  
 Frances Marie Lilienthal  
 Mr. Philip N. Lilienthal, Jr.  
 Mr. F. L. Lipman  
 Mr. R. L. Litchfield  
 Miss Edith Livermore  
 Mrs. Norman Livermore  
 Mr. Carl Livingston  
 Mr. and Mrs. James K. Lohead  
 Mrs. Dan E. London  
 Miss Ann M. Lovejoy  
 Miss Louise Lovell  
 Mrs. W. Palmer Lucas  
 Miss Myrtle Lugg  
 Mrs. Thomas P. Mailliard  
 Mrs. Decker McAllister  
 Mrs. Atholl McBean  
 Mrs. T. R. McCarron  
 Mr. A. M. Carty  
 Mrs. W. H. McCormick  
 Mrs. John McGaw  
 Mrs. D. E. McLaughlin  
 Mrs. George P. McNear  
 Mrs. Errol MacBoyle  
 Mr. and Mrs. Grover A. Magnin  
 Dr. Ergo A. Majors  
 Mrs. Vivian Mann  
 Mrs. Randolph W. Martenet  
 Mrs. Charles O. Martin  
 Mrs. Water Martin  
 Mrs. Charles Mayer  
 Miss Evelyn Mendesolle  
 Mrs. William G. Merchant  
 Mrs. R. P. Merillion  
 Mr. and Mrs. Gaetano Merola  
 Mrs. H. C. Merritt, Jr.  
 Mrs. John B. Metcalf  
 Mrs. Julian J. Meyer  
 Mrs. Robbins Milbank  
 Mr. C. O. G. Miller  
 Mrs. Harry East Miller  
 Mrs. Earl D. Minton  
 Pvt. Franklin Mittau  
 Mr. Edward F. Moffatt  
 Mr. J. K. Moffitt  
 Mrs. E. R. Mogel  
 Mrs. L. Mogel  
 Mrs. Kenneth Monteagle  
 Mr. Kenneth Monteagle  
 Mr. and Mrs. Paige Monteagle  
 Mr. Frederick H. Montgomery

Mr. George Montgomery  
 Mr. Charles Moore  
 Mrs. Joseph A. Moore  
 Mrs. Ramsay Moran  
 Mrs. James W. Morgan  
 Dr. Grace McCann Morley  
 Mrs. Philip C. Morse  
 Miss Alicia Mosgrove  
 Dr. W. H. Murphy  
 Miss Laura Musto  
 Mrs. A. N. Nathan  
 National Broadcasting Co.  
 Mrs. Hans Nelson  
 Miss Julia M. Neppert  
 Mrs. John Archibald Newcomb  
 Mr. John Francis Neylan  
 Mr. J. LeRoy Nickel, Jr.  
 Mrs. William H. Noble  
 Mrs. William H. Nolan  
 Miss Anna C. O'Brien  
 Mrs. Mary Obuijen  
 Mrs. Jack Okell  
 Miss Margaret Olcese  
 Mr. Benjamin J. Older  
 Mrs. A. Leslie Oliver  
 Mrs. Warren Olney, Jr.  
 Mrs. Julius Oppenheimer  
 Mrs. William H. Orrick  
 Mr. Charles R. Page  
 Lorriene Parisen  
 Miss Barbara Parrott  
 Mr. Philip P. Paschel  
 Mrs. Oscar Butler Perry  
 Mrs. Herman Phleger  
 Mr. and Mrs. G. Pisani  
 Mr. Aram Poladian  
 Mrs. Wesley A. Pomeroy  
 Mrs. George A. Pope, Jr.  
 Mrs. Kenneth Pope  
 Mrs. Hugh B. Porter  
 Mrs. M. C. Porter  
 Mrs. Ashton Potter  
 Mr. J. Sheldon Potter  
 Miss Eva Powell  
 Mrs. Jerome V. Powell  
 Mrs. Stanley Powell  
 Mr. and Mrs. Stanley Powell, Jr.  
 Mr. Walter G. Preddy  
 Mrs. John Raggio  
 Dr. Ralph Arthur Reynolds  
 Mrs. H. A. Richardson

## ON THE RECORD

THE MUSIC YOU LOVE TO HEAR  
 YOUR FAVORITE OPERA, SYMPHONY  
 AND POPULAR NEW RELEASES

# BALDWIN PIANO CO.

Record Department

310 Sutter Street

Sutter 8500

## PENINSULA BOX OFFICE

"Choice seats for all attractions"

338 University Ave.  
 Palo Alto 22122

Ben Franklin Hotel  
 San Mateo 43348

1454 Burlingame Ave.  
 Burlingame 31232

## OPERA GUILD MEMBERS—Continued

Miss Gertrude Richter	Mrs. Rose Silver	Mr. Ernest J. Torregano
Miss Margarete Riegg	Mr. R. O. Simon	Miss Anna O. Touvinen
Mrs. Walter Riegger	Mr. Charles W. Slack	Mrs. James W. Towne
Mrs. James W. Roberts	Mrs. Leon Sloss, Jr.	Dr. and Mrs. Harold Trimble
Mr. John T. Roberts	Mrs. Louis Sloss	Mrs. Henri W. Trubbull
Mr. and Mrs. Hall Roe	Judge and Mrs. M. C. Sloss	Mrs. Alfred S. Trubbs
Mrs. Nathan Rogers	Mrs. George D. Smith	Mrs. Nion Tucker
Mrs. Arline Miller Rolkin	Mrs. Josephine A. Smith	Mrs. John R. Upton
Mr. Robert A. Roos	Mrs. Melville L. Smith	Mrs. Sidney M. Van Wyck
Mr. John N. Rosekrans	Mrs. Russel Smith	Mr. and Mrs. Reginald L. Vaughan
Mrs. Charles W. Rosenbaum	Captain G. W. Somers	Mr. Paul Verdier
Mrs. Angela Wing Roth	Soroptomist Club	Mrs. Walter Vojon
Mrs. William P. Roth	Mrs. Robert Gordon Sproul	Dr. C. E. Voigt
Mrs. Dorothy Royce	Mrs. E. B. Stanwood	Mrs. Daniel Volkman
Mr. F. W. Rubke	Miss Gynne Stern	Mrs. Norman Waggoner
Mrs. Henry Potter Russell	Mrs. Sigmund Stern	Mr. George Wagner
Miss Pauline E. Ryder	Mrs. Lawrence Strassburger	Mrs. Richard Walker
Miss Virginia Ryder	Mr. and Mrs. Jerd Sullivan	Mrs. Ward Walkup
Mr. Marcus L. Samuels	Mrs. Alfred Sutro	Mr. Morton Wallace
Mrs. Karl Schaefer	Mrs. John A. Sutro	Mrs. Clarence R. Walter
Mr. and Mrs. Carl Schaubye	Mrs. Oscar Sutro	Mrs. John I. Walter
Mrs. Rudolph Schilling	Mrs. Oscar Sutro, Jr.	Mrs. Lingan Warren
Mr. George B. Schirmer	Mr. Louis Sutter	Mr. Michel D. Weill
Mr. Nat Schmulowitz	Mr. Henry F. Swift	Mrs. Dorothy Weiss
Miss Violet G. Schoning	Mrs. Alfred B. Swinerton	Mrs. Millard C. White
Mr. Albert Schwabacher	Mrs. Powers Symington	Mrs. Frederick C. Whitman
Mr. James H. Schwabacher	Mrs. Andrew Talbot	Mrs. F. A. Wickett
Mrs. Louis A. Schwabacher	Miss June Tanzer	Mrs. Brayton Wilbur
Mrs. Bert C. Scott	Mrs. David Armstrong Taylor	Mr. Stephen Williams
Mr. H. S. Scott	Mr. George C. Thierbach	Mrs. W. F. Willimette
Mr. Walter Sedgley	Mrs. F. F. Thomas, Jr.	Mrs. Dean Witter
Mr. and Mrs. Bruce Selfridge	Mrs. Myron I. Thomas	Dr. Dorothy A. Wood
Mrs. Richard H. Shainwald	Mrs. Miller Thomlinson	Mrs. Theodore Wores
Mrs. R. S. Shainwald	Barbara B. Thompson	Miss Barbara Young
Mrs. Nelson Towne Shaw	Mrs. Julian Thorne	Mrs. Clarence Young
Mrs. A. H. Shearer	Mr. W. G. Thornton	Mrs. V. Zaruba
Mrs. Fred R. Sherman	Miss Ida Thrans	Mrs. Harold I. Zellerbach
Mrs. Francis Shook	Mrs. M. C. Threlkeld	Mr. J. D. Zellerbach
Mrs. Henry J. Siegler	Mrs. Joseph Tobin	Mr. Edgar T. Zook
Mrs. Stauffer Sigall	Mrs. Edward Topham, Jr.	

### FIRE NOTICE

There are sufficient exits in this building to accommodate the entire audience. The exit indicated by the lighted "Exit" sign nearest your seat is the shortest route to the street. In case of fire please do not run—**Walk through that exit.**

For extraordinary performance, magnificent musical tone and authentic cabinet design, remember this name when you buy your new radio-phonograph with FM.

*Freed-Eisemann*  
"One of the world's great radio-phonographs"



FREED RADIO CORPORATION - NEW YORK, N. Y.

discoveries in beauty from the noteworthy H G White collection of exclusive giftware & antiques



*The London Shop*

352 SUTTER ST • SAN FRANCISCO • TELEPHONE EXBROOK 2408

## CONTRIBUTORS TO 1945 SEASON

Amberg-Hirth  
 Anglo California National Bank  
 Constant J. Auger  
 Baldwin Piano Co.  
 Blum's  
 Borden's Dairy Delivery Co.  
 Bullock & Jones Co.  
 City of Paris  
 City Transfer & Storage Co.  
 Columbia Concerts Inc.  
 Davis-Schonwasser  
 The Emporium  
 Julius Eppstein Florists  
 Fairmont Hotel  
 Fox West Coast Agency  
 Nelly Gaffney  
 Granat Bros.

S. & G. Gump Company  
 Hale Bros.  
 Hastings Clothing Co.  
 Joseph's Florist  
 Juliettes  
 KGO American Broadcasting Co. Inc.  
 Carolyn Kelsey  
 K. H. Lengfeld  
 H. Liebes & Company  
 Livingston Bros.  
 Mr. and Mrs. Grover A. Magnin  
 I. Magnin & Company  
 Joseph Magnin Company  
 Maison Mendessolle  
 Mark Hopkins Hotel  
 Merrill's Drug Centers

Musicians Union, Local No. 6  
 O'Connor, Moffatt & Co.  
 Palace Hotel  
 Pisani Printing & Publishing Co.  
 Podesta & Baldoche  
 Edward K. Pond  
 Ransohoffs  
 Roos Bros.  
 Schneider Bros. Inc.  
 Sherman, Clay & Co.  
 Shreve & Co.  
 Sommer & Kaufmann  
 Standard of California  
 St. Francis Hotel  
 Weinstein Co. Inc.  
 White House  
 Williams & Berg Co.  
 Yellow Cab Company

## GIFTS *that say "I'm thinking of YOU"*

California flowers . . . exquisitely reproduced in hand made ceramic pin and earring sets . . . Hand blocked smocks for house and Victory Garden wear . . . Good luck Pixies . . . Unusual, worthwhile gifts.

## THE NATALIE SHOP

12 TILLMAN PLACE  
 Bet. Sutter & Post Sts.  
 Off Grant Avenue . . .  
 Phone: DOUGLAS 1502

## STEWART BURRWELL BRADY

Scholarship Pupil of DINO BORGIOLI, London, England  
*Vocal Psychiatrist*

644 Powell Street, San Francisco

Telephone DOUGLAS 0556

## ELIZABETH WILLS

*Voice Building — Coaching*

Teacher of  
 Florence Alba

San Francisco

Studio—701 Pine Street  
 Telephone—SUTTER 1584

### ALITA ARRICK

TEACHER OF PIANO  
 CLASSICAL COURSE

Pupils Prepared for Recitals,  
 Vocal Coaching and  
 Accompanying

163 Sutter Street                      EXbrook 4652  
 San Francisco 4, Calif.

### STELLA SPRAGUE BEST

VOICE

Italian Method • Bel Canto

Pupils prepared for Grand Opera and Concert  
 2845 Van Ness Ave.                      GRaystone 2786

## CITY TRANSFER CO.

SERVES SAN FRANCISCO OPERA CO.

WHY NOT YOU?

MOVING - STORAGE - SHIPPING

333 TURK STREET                      PRospect 3060

## HANCOCK BROS.

ROLL AND RESERVED SEAT TICKETS



25 JESSIE STREET                      DOUGLAS 2191  
 San Francisco 5, California

**Can this service  
help me?**

Many a man, engrossed in his business or profession, has found a Trust Account with his bank helpful.

Under such an arrangement, the bank takes over and handles for its client the many time-consuming details of his *personal* investments. *Ask about this service.*

TRUST DEPARTMENT

**Wells Fargo  
Bank & UNION TRUST CO.**

SAN FRANCISCO

*Established 1852*

Member F. D. I. C.





*a Perfect Evening*

Start with Chesterfields and you can add only orchids and the theatre for a perfect evening. Chesterfield's Right Combination World's Best Tobacco's always gives you smoking pleasure at its best. Chesterfields satisfy because they're *milder... cooler... better-tasting.*

**CHESTERFIELD**

RIGHT COMBINATION WORLD'S BEST TOBACCOS