

L'Heure Espagnole

1945

Tuesday, October 23, 1945 8:00 PM

SFO_PUB_01_SFO_1945_09

Publications Collection

San Francisco Opera Archives

Twenty-third Annual Season
San Francisco Opera Association
Gaetano Merola General Director



War Memorial Opera House
September 25 to October 27

1945

An Invitation

TO THE WOMAN OF AFFAIRS

To every woman, her security is precious—a necessity. But the details of looking after the stocks, bonds, real estate, and other assets which provide that security are often too burdensome for any one person.

A woman can simplify her affairs, and better secure her future, just as many busy men do, by letting financial specialists shoulder part, or all, of this burden of asset management—buying, selling, exchanging, redeeming securities; leasing, repairing, insuring property; computing and paying taxes—problems ever changing, never ending.

Our Trust Service can protect and preserve her interests in many ways—advising, managing, carrying out her wishes with skilled knowledge and experience.

Have a chat with one of our Trust Officers. There will be no obligation.

TRUST DEPARTMENT

1 Sansome Street • San Francisco

20 other California offices





• Most all famous names in the world of music are exclusive with Sherman, Clay: the immortal Steinway, Chickering, and other fine pianos; the Hammond organ; the Capehart; Conn, Gibson and other fine band and orchestra instruments. Now, as it has been for 75 years, music lovers look to Sherman, Clay for everything fine in music.

SHERMAN, CLAY'S 8 PACIFIC COAST STORES ARE LOCATED IN
SAN FRANCISCO • OAKLAND • SAN JOSE • SACRAMENTO • FRESNO • PORTLAND • SEATTLE

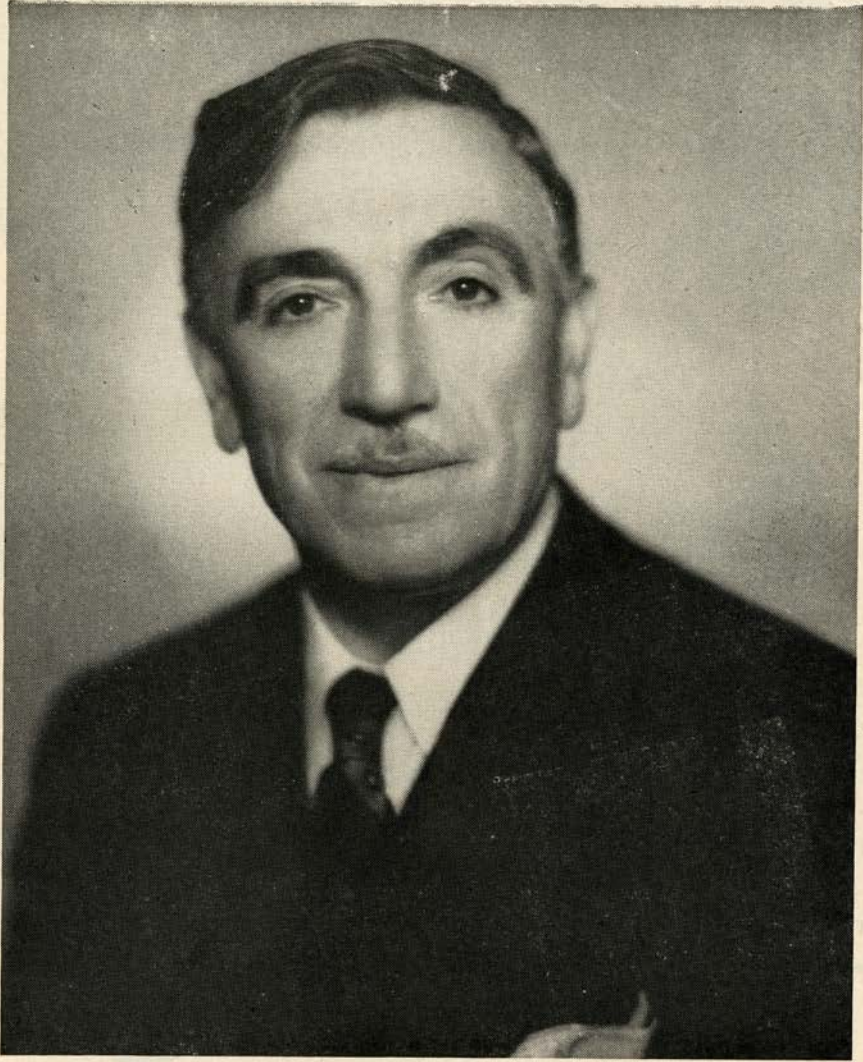
City  Paris



G. Adrian

**Sinuuous ripple of fringe . . .
inspired magnificence on
a sculptured black sheath
and dramatic cape.**


The Gown Salon, Third Floor



G A E T A N O M E R O L A
G E N E R A L
D I R E C T O R
S A N F R A N C I S C O O P E R A C O M P A N Y

YOU'LL BE GLAD
YOU WAITED FOR

Kirk



... because sterling by Kirk, America's oldest silversmiths, has been a treasured possession in American homes for over a century... cherished for its superb weight, finish and proportion. Although we may not have unlimited quantities of Repousse and other inimitable Kirk patterns on hand at all times you may be sure that your order will be filled as rapidly as possible.

Granat Bros
SHREVE TREAT & EACRET

EXCLUSIVE AGENT FOR KIRK SILVER
IN NORTHERN CALIFORNIA

SAN FRANCISCO OPERA ASSOCIATION



OFFICERS

KENNETH MONTEAGLE
PRESIDENT

MRS. STANLEY POWELL
VICE-PRESIDENT

ARTHUR MERRILL BROWN, JR.
VICE-PRESIDENT

CHARLES R. BLYTH
VICE-PRESIDENT

GEORGE T. CAMERON
TREASURER

EDWARD F. MOFFATT
SECRETARY

BOARD OF DIRECTORS

GEORGE WASHINGTON BAKER, JR.
CHARLES R. BLYTH
ARTHUR MERRILL BROWN, JR.
GEORGE T. CAMERON
WILLIAM W. CROCKER
MORTIMER FLEISHHACKER

TIMOTHY HEALY
KENNETH MONTEAGLE
JOHN FRANCIS NEYLAN
MRS. STANLEY POWELL
MRS. HENRY POTTER RUSSELL
NIDN R. TUCKER

EXECUTIVE STAFF

PAUL POSZ
BUSINESS MANAGER

CURRAN SWINT, PUBLICITY DIRECTOR

ARTHUR FRAHM-LALIA DECKER
KATHLEEN LAWLOR
TICKET SALES

EVELYN CROCKETT-GERALD G. ROSS
PHYLLIS AMATI
OFFICE SECRETARIES

VETERANS OF WORLD WAR II!

If you are interested in a Home Loan

*... whether a: **GI Loan***

an

FHA Loan

or a

Bank Loan

*call at any of our
seven offices*



INCORPORATED FEBRUARY 10, 1868

THE SAN FRANCISCO BANK

Savings

Member Federal Deposit Insurance Corporation

Trust

526 California Street, San Francisco

Mission and Twenty-first Streets
Clement Street and Seventh Avenue
1528 Fillmore Street

Haight and Belvedere Streets
West Portal Avenue and Ulloa Street
1435 Burlingame Avenue, Burlingame

PARKER S. MADDUX, *President*

BOARD OF GOVERNORS

GEORGE WASHINGTON BAKER, JR.	REUBEN B. HALE	MRS. JOHN FRANCIS NEYLAN
P. A. BERGERDT	MRS. LAWRENCE W. HARRIS	JOHN FRANCIS NEYLAN
CHARLES R. BLYTH	J. EMMET HAYDEN	ETTORE PATRIZI
J. BRENDAN BRADY	TIMOTHY HEALY	RALPH L. PHELPS
H. SEWALL BRADLEY	EDWARD D. KEIL	MRS. M. C. PORTER
ARTHUR MERRILL BROWN, JR.	CHARLES H. KENDRICK	MRS. STANLEY POWELL
GUIDO CAGLIERI	MRS. MARCUS S. KOSHLAND	STANLEY POWELL
MRS. GEORGE T. CAMERON	LEWIS A. LAPHAM	ANGELO J. ROSSI
GEORGE T. CAMERON	MRS. STINE LEIS	MRS. HENRY POTTER RUSSELL
CHARLES A. CHRISTIN	J. B. LEVISON	A. SBARBORO
TEMPLETON CROCKER	MISS EDITH LIVERMORE	FRED R. SHERMAN
WILLIAM W. CROCKER	M. E. LOMBARDI	PAUL SHOUP
GEORGE E. CROTHERS	MISS RUTH W. LDRING	MRS. M. C. SLOSS
MRS. FRANK P. DEERING	MISS SALLIE MAYNARD	RALPH J. A. STERN
MISS MARY C. DUNHAM	WILLIAM GLADSTONE MERCHANT	MRS. SIGMUND STERN
SIDNEY M. EHRMAN	MRS. C. D. G. MILLER	MRS. DAVID ARMSTRONG TAYLOR
MRS. WILLIAM M. FITZHUGH	ROBERT W. MILLER	M. C. THRELKELD
MORTIMER FLEISHHACKER	EDWARD F. MOFFATT	NIDN R. TUCKER
A. P. GIANNINI	KENNETH MONTEAGLE	RANDOLPH C. WALKER
RANDOLPH HALE	GUIDO MUSTO	WHITNEY WARREN, JR.



WAR MEMORIAL OPERA HOUSE

(OWNED AND OPERATED BY THE CITY AND COUNTY OF SAN FRANCISCO
THROUGH THE BOARD OF TRUSTEES OF THE WAR MEMORIAL)

BOARD OF TRUSTEES

CHARLES B. KLEUPFER PRESIDENT	GUIDO J. MUSTO VICE-PRESIDENT	WALTER A. LEONETTI
SIDNEY M. EHRMAN	WILBUR A. HENDERSON	RICHARD H. NEWHALL
ALVIN GERLACK	DAN S. HEWITT	RALPH J. A. STERN
D. LYLE GHIRARDELLI	J. BRUCE JONES	

EDWARD SHARKEY
MANAGING DIRECTOR OF
THE WAR MEMORIAL

IRA G. THOMPSON
SECRETARY TO THE BOARD
OF TRUSTEES

Buffet Service in Basement Promenade and Dress Circle during all performances

LIBRETTOS AND OPERA GLASSES IN FOYER . HEAD SETS FOR THE DEAF ARE
AVAILABLE AT TABLE IN MAIN FOYER . ATTENDANT WILL CONNECT
WITH SEAT LOCATION UPON REQUEST . FOR LOST AND FOUND
INFORMATION, INQUIRE AT CHECK ROOM NO. 3

WILLIAM A. MEADE, DIRECTOR OF HOUSE SERVICE



*Over a
Century of furnishing
America's Homes*

W & J SLOANE

216 SUTTER near GRANT



SAN FRANCISCO 8, CALIFORNIA

SAN FRANCISCO OPERA COMPANY

GAETANO MEROLA

GENERAL DIRECTOR

PAUL POSZ
BUSINESS MANAGER

ARMANDO AGNINI
STAGE AND TECHNICAL DIRECTOR

KURT HERBERT ADLER
CHORUS DIRECTOR

HERBERT GRAF
STAGE DIRECTOR

JESSIE KEENE
SECRETARY

ETIENNE BARONE
STAGE MANAGER

WILLAM CHRISTENSEN
BALLET MASTER



CONDUCTORS and ASSISTANTS

GAETANO MEROLA

WILLIAM STEINBERG

GEORGE SEBASTIAN

PIETRO CIMARA

KARL RIEDEL

OTELLO CERONI

KURT HERBERT ADLER

KARL KRITZ

ANTONIO DELL'OREFICE

NAOUM BLINDER
CONCERT MASTER

JULIUS HAUG
PERSONNEL MANAGER

ARTISTS

LICIA ALBANESE
SOPRANO

EVARISTO ALIBERTINI
BARITONE

LORENZO ALVARY
BASS

BRITTA ANDERSON
CONTRALTO

SALVATORE BACCALONI
BASS

BIANCA BRUNI
SOPRANO

LORRAINE CALCAGNO
CONTRALTO

LEILA CAMBI
SOPRANO

FRANCES CASTELLANI
SOPRANO

GEORGE CEHANOVSKY
BARITONE

NADINE CONNER
SOPRANO

EVELYNN CORVELLO
SOPRANO

VIVIAN DELLA CHIESA
SOPRANO

MURIEL DEMERS
SOPRANO

ALESSIO DE PAOLIS
TENOR

LILY DJANEL
SOPRANO

LEO GALT
BARITONE

JOHN GARRIS
TENOR

HERTA GLAZ
CONTRALTO

CHARLES GOODWIN
BASS

PAUL GUENTER
BARITONE

MACK HARRELL
BARITONE

MARGARET HARSHAW
CONTRALTO

ELMA HEITMAN
SOPRANO

ROSE AGNES HERSCH
CONTRALTO

MARY BELLE JACOBS
SOPRANO

FREDERICK JAGEL
TENOR

HERBERT JANSSEN
BARITONE

RADUL JOBIN
TENOR

MARILYNN KING
SOPRANO

CHARLES KULLMAN
TENOR

BRUND LANDI
TENOR

KATHLEEN LAWLOR
SOPRANO

LOTTE LEHMANN
SOPRANO

PAUL LEIBER
TENOR

MAX LORENZINI
BARITONE

AUGUSTO LORENZO
BARITONE

ROBERT BRUCE MACKAY
BASS

BENJAMIN MARTIN
BARITONE

LAURITZ MELCHIOR
TENOR

ROBERT MILLS
BARITONE

ROBIN NELSON
BARITONE

HERBERT NYSTROM
TENOR

WALTER DLITZKI
BARITONE

JAN PEECE
TENOR

IVAN PETROFF
BARITONE

EZIO PINZA
BASS

LILY PONS
SOPRANO

HILDE REGGIANI
SOPRANO

ANITA RAGUSA
SOPRANO

STELLA ROMAN
SOPRANO

W. VERNON SANDERS
BASS

BETTIE SANDERSON
SOPRANO

ELEANOR STEBER
SOPRANO

RISE STEVENS
SOPRANO

GEORGE TALLONE
TENOR

JOSEPH TISSIER
TENOR

HELEN TRAUBEL
SOPRANO

CLARAMAE TURNER
CONTRALTO

FRANCESCO VALENTINO
BARITONE

THELMA VOTIPKA
SOPRANO

FREDERIC WILLIAMS
TENOR

The World's Greatest Artists

are on

VICTOR RECORDS



You can have command performances of Grand Opera in your home, through the medium of Victor Records. You will find the world's greatest artists in Victor's great Catalog of Music.

THE MUSIC AMERICA LOVES BEST!



**CONSULT THESE VICTOR DEALERS FOR
YOUR VICTOR RECORD REQUIREMENTS**

CITY OF PARIS Douglas 4500 Paul Verdier, Pres. <i>Radios - Records</i> Normandy Lane	MUSIC CENTER <i>San Francisco's Newest Record Shop</i> 40 POWELL STREET <i>Open Evenings till 9 p.m.</i>	THE WHITE HOUSE Raphael Weill & Company <i>Radio-Record Shop</i> Fourth Floor
THE EMPORIUM <i>San Francisco's Shopping Center</i> 835 MARKET STREET	O'CONNOR MOFFATT and Company <i>Stockton at O'Farrell Utter 1800</i>	THE RECORD SHOP 14 Tillman Place San Francisco 8, California Off Grant Ave. bet. Post and Sutter Phone EXbrook 2383 <i>"The Best in Recorded Music"</i>

C H O R A L E N S E M B L E

MISSES

BRITTA ANDERSON
LUCY ARMAGANIAN
VIOLET AURAND
EILEEN BROWNE
BIANCA BRUNI
LORRAINE CALCAGNO
LELIA CAMBI
ELIZABETH CASE
GRACE COLTRONE
ELEANOR CORYELL
MURIEL DEMERS
SONYA FREED
BARBARA FRITZ
EMILY GRIGSBY
THORA HARPER

ELMA HEITMAN
ROSE AGNES HERSCH
ORTHELLA HUGHES
MARY BELLE JACOBS
RHEA KESSLER
MARILYNN KING
LUCILE KIRTLEY
SYBIL LOUISE KNAPP
KATHLEEN LAWLOR
NEVART LEVON
DOROTHY MCINTYRE
DELPHIA PHILLIPS
BETTIE SANDERSON
VERA SOLAX

DORA DI TANO, ACCOMPANIST

MESSRS.

EVARISTO ALIBERTINI
ALBERT BARRETT
HARRY BATHGATE
FRED BEARDSLEY
ALTON BERNHARD
LOUIS BRAUNSTEIN
JOHN CRONIN
GALLIANO DANELUZ
FLOYD DAVIS
LORENZO DE BEAL
AMERIGO DEL GRANDE
ARTHUR DE MASI
PHIL DOAN
LEO GALT
WILLIAM GORMAN
PAUL GUENTER
E. ERICH LAWRENCE
PAUL LEIBER
MAX LORENZINI
AUGUSTO LOURENZO
ROBERT BRUCE MACKAY
GIULIO MANCINI
BENJAMIN MARTIN
CARLO MENNUCCI
ROBIN NELSON
WILLIAM PETERSEN
W. VERNON SANDERS
BRUCE LINWOOD STEWART
GEORGE TALLONE
ALBERTO VANNUCCI
EDWIN VANNUCCI
FRED WAHLIN
FREDERIC WILLIAMS
HERMAN WISEMAN

BALLET

RUBY ASQUITH, PRIMA BALLERINA

WILLIAM CHRISTENSEN, CHOREOGRAPHER AND BALLET MASTER

SOLOISTS

MISSES

CELENA CUMMINGS
ROSALIE PROSCH
SOLANA

MISSES

LOIS TREADWELL
JOCELYN VOLLMAR
ONNA WHITE

PRINCIPAL DANCERS

MISSES

BARBARA BADERTSCHER
BETTY CUNEO
MARCELLA DODGE
ANTOINETTE GUHLKE
JYMMI RIEDEL
SALLY WHALEN
WANA WILLIAMS

MESSRS.

ROBERT HANSEN
RUSSELL HARTLEY
FRANK NELSON
RALPH PATTERSON
JOAQUIN FELSCH
ROBERT THORSON

CORPS DE BALLET

MISSES

GENEVIEVE ASDNOVICH
BONNY BELL
JANE BOWEN
VERA GOLD

MISSES

AUDREY GREENLEY
NANCY JACOBS
NANCY JOHNSON

MISSES

IRENE MANSFELDT
JUDY NATHANSON
MARCIANNE RAUB

MISSES

JANET SASSOON
JOAN VICKERS
CAROLINE WILLIAMS
SYLVIA WILLIAMS

PRODUCTION

EUGENE B. DUNKEL-FRITZ KRAENKE
SCENIC ARTISTS

EARL MCGUIRE
MASTER CARPENTER

CHARLES J. HOLZMUELLER
MASTER ELECTRICIAN

JOHN T. HEAVEY
MASTER OF PROPERTIES

FOR WAR MEMORIAL OPERA HOUSE

S. E. SIMMONS
MASTER CARPENTER

EDWARD J. ZETTEL
MASTER ELECTRICIAN

CLAUDE L. WAGGONER
MASTER OF PROPERTIES

COSTUMES AND WIGS BY GOLDSTEIN & CO.

ALEXANDER AGNINI
WARDROBE MASTER

INEZ DODSON
WARDROBE MISTRESS

SUE MCGOWAN
HAIRDRESSER

EVERETT MASON
MAKEUP ARTIST

PROGRAM

PISANI PRINTING & PUBLISHING COMPANY, PUBLISHERS, DESIGNERS AND PRINTERS



LILY PONS
LAURITZ MELCHIOR
LICIA ALBANESE
RAOUL JOBIN
HELEN TRAUBEL
CHARLES KULLMAN
STELLA ROMAN
EZIO PINZA
RISE STEVENS
LORENZO ALVARY
VIVIAN DELLA CHIESA

Artists of the San Francisco OPERA COMPANY



Beaulieu Vineyard

BV

WINES



BEAULIEU VINEYARD is a family estate . . . located in the lovely Napa Valley of Northern California. Today, as for nearly half a century, we take pride in the quality of our wines. Our 600 acres of vines grow wine grapes of the finest strains. Thus the yield is far lighter than that of grapes of lesser quality.

Our old-world-type of winery has a storage capacity equal to five times our yearly production — thus we have ample facilities to develop our inventory of fine wines in small cooperage until bottle-ripe, and to bin them afterwards.

As a consequence of our painstaking methods, production is limited and our wines are not available everywhere.

FIVE REPRESENTATIVE BEAULIEU VINEYARD WINES

GEORGES DE LATOUR PRIVATE RESERVE CABERNET: An eminent wine, made solely with Cabernet Sauvignon grapes.

BEAULIEU NAPA VALLEY MUSCAT DE FRONTIGNAN: This wine has been acclaimed by experts as the finest dessert wine produced in America. A wine for entertaining.

BEAUMONT: Made with the famous Pinot Noir grapes (original cuttings from Cote d'Or district of France).

BEAUCLAIR: One of the fine white wines of the Napa Valley. Made with Johannesberger Riesling grapes.

BEAUROSÉ. A light, agreeable vinrosé. To be served very chilled. The hostess wine for lunch.

Beaulieu Vineyard

FOUNDED AND OWNED CONTINUOUSLY BY THE DE LATOUR FAMILY SINCE 1900

Vineyards and Winery at Rutherford, Napa County, California



FREDERICK JAGEL

LILY DJANEL

JAN PEERCE

HERTA GLAZ

FRANCESCO VALENTINO

MARGARET HARSHAW

SALVATORE BACCALONI

LOTTE LEHMANN

IVAN PETROFF

ELEANOR STEBER

MACK HARRELL

Artists of the San Francisco OPERA COMPANY



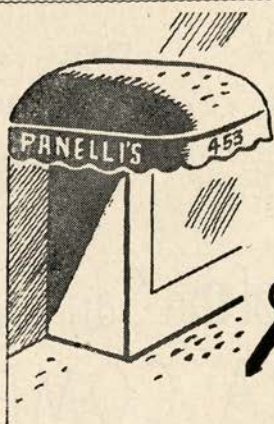


Simi Vineyard

FINE CALIFORNIA WINES

When entertaining, serve superb SIMI vintage table wines ... Burgundy, Cabernet, Carignan, Zinfandel, and Larose, Sauterne, Chablis ... matured with unhurried care from choicest Sonoma hillside grapes ... ask for SIMI ... pronounced See-Me ... at your dealer's.

PARROTT & CO. . . San Francisco . . Sole U. S. Distributors



The New

Panelli's

... a distinctive Restaurant glorifying delicious Italian Cuisine, featuring the Charcoal Broiler
Cocktails

453 PINE STREET Sutter 9937
SAN FRANCISCO, CALIFORNIA



HILDE REGGIANI

HERBERT JANSSEN

NADINE CONNER

BRUNO LANDI

THELMA VOTIPKA

GEORGE CEHANOVSKY

ANITA RAGUSA

ALESSIO DE PAOLIS

FRANCES CASTELLANI

WALTER OLITZKI

JOHN GARRIS

Artists of the San Francisco OPERA COMPANY



MUNICIPAL CONCERTS

1946
THE ART COMMISSION

Presents

SAN FRANCISCO
SYMPHONY ORCHESTRA

JANUARY 11



ARTUR RUBINSTEIN
THE MASTER PIANIST
PIERRE MONTEUX, CONDUCTING

JANUARY 24

TO

FEBRUARY 3



RUSSIAN BALLET
BALLET THEATRE
10 SPECTACULAR PERFORMANCES
ALL WITH SAN FRANCISCO SYMPHONY

FEBRUARY 13



LEONARD BERNSTEIN
GUEST CONDUCTOR
JESUS MARIA SANROMA, PIANIST

FEBRUARY 28



LICIA ALBANESE
PRIMA DONNA, SAN FRANCISCO AND MET. OPERA CO.
ALL OPERA PROGRAM
GAETANO MEROLA, CONDUCTING

APRIL 6



JOSEPH SZIGETI
THE INCOMPARABLE VIOLINIST
PIERRE MONTEUX, CONDUCTING

MUSIC
MAINTAINS
MORALE
MUSIC
MUST
GO ON!

FIVE STAR SEASON

Season Reservations Now!

★SIX EVENTS including opening night of Ballet Theatre and choice of any one other Ballet performance, also the four guest artist concerts.
\$11.40, \$8.40, \$6.90, \$4.80, \$3.60, tax incl. BOX OFFICE, Sherman, Clay, SU 1331



ACME
..the beer with the
high I.Q. (It Quenches!)

ACME BREWERIES • San Francisco, Los Angeles



R E P E R T O I R E

REGULAR SERIES

- CARMEN (*Bizet*) *Tuesday Night, September 25, at 8:00*
 With Stevens, Steber, Votipka, Turner, Jobin, Harrell, Olitzki, De Paolis, Cehanovsky.
 MEROLA, Conductor
- LA BOHEME (*Puccini*) *Friday Night, September 28, at 8:15*
 With Albanese, Conner, Kullman, Valentino, Pinza, Cehanovsky, Baccaloni, Alibertini,
 Lorenzini, Messina. MEROLA, Conductor
- DER ROSENKAVALIER (*Richard Strauss*) *Tuesday Night, October 2, at 8:00*
 With Lehmann, Stevens, Steber, Glaz, Votipka, Alvary, Landi, Olitzki, De Paolis,
 Harrell, Garris, King, Cambi, Lawlor, Hersch, Sanderson, Tallone, Tissier, Goodwin,
 Leiber, Guenter, MacKay, Williams. SEBASTIAN, Conductor
- TRISTAN UND ISOLDE (*Wagner*) *Friday Night October 5, at 8:00*
 With Traubel, Glaz, Melchior, Janssen, Alvary, Olitzki, Garris, Goodwin.
 STEINBERG, Conductor
- DIE WALKURE (*Wagner*) *Tuesday Night, October 9, at 8:00*
 With Traubel, Djanel, Harshaw, Melchior, Janssen, Alvary, Votipka, Glaz, Ragusa,
 Demers, Anderson, Turner, Calcagno. STEINBERG, Conductor
- BORIS GODOUNOFF (*Moussorgsky*) *Friday Night, October 12, at 8:00*
 With Pinza, Baccaloni, Jagel, Alvary, De Paolis, Cehanovsky, Garris, Della Chiesa,
 Harshaw, Glaz, Castellani, Turner, Mills, Nystrom, Tissier, Goodwin, Bruni, Calcagno,
 Leiber, Martin, Lourenzo. SEBASTIAN, Conductor
- DON GIOVANNI (*Mozart*) *Tuesday Night, October 16, at 8:00*
 With Pinza, Baccaloni, Landi, Alvary, Mills, Roman, Della Chiesa, Albanese.
 STEINBERG, Conductor
- LUCIA DI LAMMERMOOR (*Donizetti*) *Friday Night, October 19, at 8:15*
 With Pons, Votipka, Peerce, Alvary, Petroff, Garris, Nystrom. CIMARA, Conductor
- L'HEURE ESPAGNOLE (*Ravel*) *Tuesday Night, October 23, at 8:00*
 With Albanese, Harrell, Baccaloni, De Paolis, Garris. MEROLA, Conductor
followed by
- SALOME (*Richard Strauss*)
 With Djanel, Harshaw, Glaz, Jagel, Janssen, Garris, Alvary, Cehanovsky, De Paolis,
 Heitman, Nelson, Mills, Tallone, Nystrom, Tissier, Goodwin, Sanders, Galt.
 SEBASTIAN, Conductor
- RIGOLETTO (*Verdi*) *Friday Night, October 26, at 8:15*
 With Pons, Glaz, Petroff, Peerce, Alvary, De Paolis, Cehanovsky, Calcagno, Ragusa,
 Lawlor, Nelson, Mills. CIMARA, Conductor

POPULAR SERIES

- LES CONTES D'HOFFMANN (*Offenbach*) *Thursday Night, October 4, at 8:15*
 With Albanese, Djanel, Glaz, Cervello, Turner, Jobin, Pinza, Valentino, Olitzki,
 De Paolis, Alvary, Garris, Tissier, Mills, Sanders. MEROLA, Conductor
- CARMEN (*Bizet*) *Thursday Night, October 11, at 8:00*
 With same cast as Regular Series performance.
- DER ROSENKAVALIER (*Richard Strauss*) *Thursday Night, October 18, at 8:00*
 With same cast as Regular Series performance.
- BORIS GODOUNOFF (*Moussorgsky*) *Monday Night, October 22, at 8:00*
 With same cast as Regular Series performance.
- DON GIOVANNI (*Mozart*) *Thursday Night, October 25, at 8:00*
 With same cast as Regular Series performance except Eleanor Steber will sing Donna Elvira
 and Nadine Conner will sing Zerlina.

EXTRA PERFORMANCES

- LA TRAVIATA (*Verdi*) *Sunday Matinee, September 30, at 2:15*
 With Albanese, Ragusa, Lawlor, Kullman, Valentino, De Paolis, Cehanovsky, Olitzki,
 Goodwin. MEROLA, Conductor
- CAVALLERIA RUSTICANA (*Mascagni*) *Sunday Matinee, October 7, at 2:15*
 With Della Chiesa, Glaz, Votipka, Kullman, Petroff.
followed by
- I PAGLIACCI (*Leoncavallo*)
 With Albanese, Jobin, Valentino, Harrell, De Paolis, Tallone, Sanders.
 ADLER, Conductor
- TRISTAN UND ISOLDE (*Wagner*) *Sunday Matinee, October 14, at 2:00*
 With same cast as Regular Series performance except Margaret Harshaw will sing Brangane.
- LA TRAVIATA (*Verdi*) *Wednesday Night, October 17, at 8:15*
 With same cast as Regular Series performance.
- BARBER OF SEVILLE (*Rossini*) *Sunday Matinee, October 21, at 2:00*
 With Reggiani, Turner, Landi, Valentino, Baccaloni, Pinza, De Paolis.
 CIMARA, Conductor
- LA BOHEME (*Puccini*) *Wednesday Night, October 24, at 8:15*
 With same cast as Regular Series performance except Vivian Della Chiesa will sing Mimi.
- AIDA (*Verdi*) *Saturday Night, October 27, at 8:00*
 With Roman, Harshaw, Jagel, Petroff, Pinza, Alvary, De Paolis, Votipka.
 MEROLA, Conductor

For the finest music in radio . . .

Keep tuned to **KPO**

★ **680** on your dial

John Charles Thomas
Sun. at 11:30 a.m.



Contented Hour
Mon. at 7:00 p.m.

General Motors Symphony
Sun. at 2:00 p.m.



Telephone Hour
Mon. at 9:00 p.m.

Album of Familiar Music
Sun. at 6:30 p.m.



Light and Mellow
Tues. at 9:30 p.m.

Hour of Charm
Sun. at 7:00 p.m.



Standard School Broadcast
Thurs. at 10:00 a.m.
(starting Oct. 18)

Standard Hour
Sun. at 8:30 p.m.



Waltz Time
Fri. at 6:00 p.m.

Voice of Firestone
Mon. at 5:30 p.m.



Know Your Symphony
Sat. at 5:00 p.m.



Part of a continuous Parade of Stars
heard over KPO and the
NATIONAL BROADCASTING COMPANY
America's Number One Network

THE SAN FRANCISCO OPERA ASSOCIATION

Presents

SAN FRANCISCO'S GREATEST DANCE FESTIVAL

An Unprecedented Ballet Revue

Old Classical

Modern

New Classical

THE ONE AND ONLY

Ballet Russe de Monte Carlo

Two Weeks — Fifteen Gala Performances

Repertoire

Evenings at 8:30

Tues. Eve., Nov. 13

BALLET IMPERIAL
*COMEDIA BALLETTICA
L'APRES MIDI D'UN FAUNE
LE BEAU DANUBE

Wed. Eve., Nov. 14

LE BOURGEOIS GENTILHOMME
*MOZARTIANA
SCHEHERAZADE

Thurs. Eve., Nov. 15

THE SNOW MAIDEN
*CONCERTO BAROCCO
DIVERTISSEMENTS FROM COPPELIA

Fri. Eve., Nov. 16

BALLET IMPERIAL
*FRANKIE AND JOHNNY
GRAND ADAGIO
LE BEAU DANUBE

Sat. Eve., Nov. 17

CONCERTO BAROCCO
DANSES CONCERTANTES
COMEDIA BALLETTICA
RODEO

Sun. Mat., Nov. 18

LES SYLPHIDES
LE BOURGEOIS GENTILHOMME
GRAND ADAGIO
RODEO

Sun. Eve., Nov. 18

MOZARTIANA
FRANKIE AND JOHNNY
L'APRES MIDI D'UN FAUNE
LE BOURGEOIS GENTILHOMME

Matinees at 2:30

Mon. Eve., Nov. 19

THE SNOW MAIDEN
MOZARTIANA
L'APRES MIDI D'UN FAUNE
SCHEHERAZADE

Tues. Eve., Nov. 20

CHOPIN CONCERTO
DANSES CONCERTANTES
COMEDIA BALLETTICA
RODEO

Wed. Eve., Nov. 21

CONCERTO BAROCCO
L'APRES MIDI D'UN FAUNE
THE NUTCRACKER

Thurs. Eve., Nov. 22

MOZARTIANA
FRANKIE AND JOHNNY
DIVERTISSEMENTS FROM COPPELIA

Fri. Eve., Nov. 23

LES SYLPHIDES
DANSES CONCERTANTES
PAS DE DEUX CLASSIQUE
SCHEHERAZADE

Sat. Mat., Nov. 24

LES SYLPHIDES
CONCERTO BAROCCO
COPPELIA

Sun. Mat., Nov. 25

THE SNOW MAIDEN
COMEDIA BALLETTICA
THE NUTCRACKER

Sun. Eve., Nov. 25

CONCERTO BAROCCO
COMEDIA BALLETTICA
MOZARTIANA
LE BEAU DANUBE

** San Francisco debut*

ALEXANDRA DANILOVA
NATHALIE KRASSOVSKA
RUTHANNA BORIS
MARIA TALLCHIEF
DOROTHY ETHERIDGE
GERTRUDE SVOBODINA

PAULINE GODDARD
YVONNE CHOUTEAU
MARIE-JEANNE
FREDERIC FRANKLIN
LEON DANIELIAN
NICOLAS MAGALLANES

MICHEL KATCHAROFF
NIKITA TALIN
HERBERT BLISS
PETER DEIGN
ROBERT LINDGREN
STANLEY ZOMPAKOS

Brilliant Corps de Ballet · Symphony Orchestra · Company of 125



Tickets: \$3.00, \$2.40, \$1.80, \$1.20, Tax Incl. Opera Box Office, City of Paris, EX 8585

WAR MEMORIAL OPERA HOUSE



Carmen Cavallaro

AND HIS FAMOUS ORCHESTRA
OPENS TUESDAY, OCTOBER 2ND

hotel

MARK HOPKINS

GEO. D. SMITH • GENERAL MANAGER

C O L U M B I A

presents HELEN TRAUBEL in excerpts from


TRISTAN und ISOLDE

with the PHILHARMONIC-SYMPHONY ORCHESTRA OF NEW YORK
conducted by ARTUR RODZINSKI

Helen Traubel, the first American-born singer to assume leading soprano roles in Wagnerian operas, sings excerpts from Tristan und Isolde in this beautifully recorded Columbia album. Prelude to Act I; Isolde's narrative (Act 1, Scene 3); Prelude to Act III; Liebestod (Isolde's Love Death) (Act III, Scene 4) are included.

Five 12-inch records and album, \$5.77

IN SAN FRANCISCO: Kearny Street at Sutter
2539 Mission Street • OAKLAND: Broadway at Hobart
Also • San Jose • Sacramento • Fresno

Sherman  **Clay**

THE CONCERT DIVISION OF THE
SAN FRANCISCO OPERA ASSOCIATION

GAETANO MEROLA, *General Director*

PAUL POSZ, *Business Manager*

SEASON 1945-1946

A New High in Concert Values

TWO OPERAS — PLUS

Tuesday, Nov. 13
BALLET RUSSE
DE MONTE CARLO

Thursday, Jan. 3

TRAUBEL

Sunday, Jan. 6

HEIFETZ

Friday, Jan. 18
ROSARIO and ANTONIO

Monday, Jan. 21
SCHNABEL

Monday, Feb. 11
BJOERLING

Tuesday, Feb. 26
SERKIN

Tuesday, Mar. 5
ROBESON

Monday, Mar. 18
TOUREL

Tuesday, Mar. 26
MENUHIN

TICKET PRICES

Orchestra and Boxes, \$3.00; Dress Circle, \$1.80 Tax Included

Other Sections Sold Out

Opera Box Office — City of Paris — Ex 8585

WAR MEMORIAL OPERA HOUSE

4 VICTOR ALBUMS YOU SHOULD OWN

ENRICO CARUSO: Metropolitan Revivals from Lucia, Masked Ball, Rigoletto, La Boheme, Martha, I Lombardi, Faust, Samson et Delilah.

BORIS GODOUNOFF (abridged) Featuring Alexander Kipnis. All in Russian, complete on five 12-inch records.

SCENES FROM WAGNER OPERAS: Lauritz Melchior, singing arias from Siegfried, Tristan und Isolde, Lohengrin, Tannhauser, Der Fliegende Hollander.

DER ROSENKAVALIER: arranged as a symphonic suite; recorded by the Cincinnati Symphony Orchestra.

For opera albums or single records, we invite you to visit the Classics Room on our Record Balcony.

SCHWABACHER-FREY

MARKET OPPOSITE GRANT

THE OFFICIAL PIANO *of the*
SAN FRANCISCO OPERA COMPANY

BALDWIN



Choose your Piano as the Artists Do!



Lily Pons

Ezio Pinza

Helen Traubel

THE BALDWIN PIANO CO.

310 SUTTER STREET, SAN FRANCISCO
1828 WEBSTER STREET, OAKLAND

San Francisco Symphony Orchestra

Pierre Monteux, Conductor

LEONORA WOOD ARMSBY, *President and Managing Director*

HOWARD K. SKINNER, *Business Manager*



SCHAPIRO
ANDERSON

STERN

MALCUZYNSKI
SCHNABEL

FLEISHER
MONTEUX

URY
HOROWITZ

KANDER

LEVANT
STRAVINSKY

Twelve Friday Afternoons

Promptly at 2:30 o'clock

- NOV. 23 OPENING CONCERT
- NOV. 30 VLADIMIR HOROWITZ, *Pianist*
- DEC. 7 ORCHESTRAL PROGRAM
- DEC. 14 GERHARD KANDER, *Violinist*
- DEC. 21 LEON FLEISHER, *Pianist*
- JAN. 4 MAXIM SCHAPIRO, *Pianist*
- JAN. 18 ARTUR SCHNABEL, *Pianist*
- FEB. 8 ISAAC STERN, *Violinist*
- MAR. 15 WITOLD MALCUZYNSKI, *Pianist*
- MAR. 22 IGOR STRAVINSKY, *Conductor*
- MAR. 29 TANYA URY, *Pianist*
- APR. 12 CLOSING CONCERT

Three Thursday Evenings

Promptly at 8:30 o'clock

- JAN. 17 ARTHUR SCHNABEL, *Pianist*
- FEB. 21 MARIAN ANDERSON, *Contralto*
- MAR. 7 OSCAR LEVANT, *Pianist*

Fourteen Saturday Evenings

Promptly at 8:30 o'clock

- NOV. 24 OPENING CONCERT
- DEC. 1 VLADIMIR HOROWITZ, *Pianist*
- DEC. 8 ORCHESTRAL PROGRAM
- DEC. 15 GERHARD KANDER, *Violinist*
- DEC. 22 LEON FLEISHER, *Pianist*
- JAN. 5 MAXIM SCHAPIRO, *Pianist*
- JAN. 19 ARTUR SCHNABEL, *Pianist*
- FEB. 9 ISAAC STERN, *Violinist*
- FEB. 23 MARIAN ANDERSON, *Contralto*
- MAR. 9 OSCAR LEVANT, *Pianist*
- MAR. 16 WITOLD MALCUZYNSKI, *Pianist*
- MAR. 23 IGOR STRAVINSKY, *Conductor*
- MAR. 30 TANYA URY, *Pianist*
- APR. 13 CLOSING CONCERT

Season Tickets Now On Sale

Sherman, Clay & Co., Kearny and Sutter Sts., San Francisco, Zone 8. SUTTER 1331

WAR MEMORIAL OPERA HOUSE

NOVEMBER 23, 1945 • APRIL 13, 1946



Nicholas Johnston

MASTER PHOTOGRAPHER

SAN FRANCISCO

427 POST ST. HOTEL ST. FRANCIS

YUKON 2061

MONDAY NIGHT, OCTOBER 22, at 8:00

Boris Godounoff

Music drama in four acts—eight scenes—by Modeste Moussorgsky
Text by the composer based on a Russian historical drama by
the poet Pushkin.

THE CAST

Boris Godounoff, Regent of Russia.....	EZIO PINZA
Teodoro, his son.....	HERTA GLAZ
Xenia, his daughter.....	FRANCES CASTELLANI
The Nurse.....	MARGARET HARSHAW
Schouisky	ALESSIO DE PAOLIS
Tchelkaloff	GEORGE CEHANOVSKY
Brother Pimenn	LORENZO ALVARY
Dimitri	FREDERICK JAGEL
Marina	VIVIAN DELLA CHIESA
Varlaam	SALVATORE BACCALONI
Missail	HERBERT NYSTROM
The Innkeeper	CLARAMAE TURNER
The Simpleton	JOHN GARRIS
A Police Officer.....	CHARLES GOODWIN
Sergeant of the Frontier Guard.....	GEORG SPELVINSKI
Boyar in Waiting.....	JOSEPH TISSIER
Lovitzky	CHARLES GOODWIN
Tcherniakowsky	ROBERT MILLS
Four Peasants.....	{ BIANCA BRUNI, LORRAINE CALCAGNO BENJAMIN MARTIN, AUGUSTO LORENZO
Kronchkoff, a Boyar.....	PAUL LEIBER
<i>Boys, Imperial Guards, Soldiers, Police, Polish Noblemen and Ladies, Pilgrims, Children, People of Moscow.</i>	

STAGE DIRECTOR
ARMANDO AGNINI

CONDUCTOR
GEORGE SEBASTIAN

CHORUS DIRECTOR
KURT HERBERT ADLER

TIME AND PLACE: About 1600; Moscow and Lithuanian Frontier
Act I: Scene 1: Outside the Monastery of Novadievitci
near Moscow
Scene 2: Lonely Cell in the Monastery of the
Miracle at Night
Scene 3: Cathedral Square, Moscow
Act II: Scene 1: Inn on the Lithuanian Frontier
Scene 2: Czar's Apartment in the Kremlin
Act III: Park of Marina's Palace, Poland
Act IV: Scene 1: Forest of Krony near Moscow
Scene 2: Duma in the Kremlin

Children from San Francisco Conservatory of Music, Reba Kay, director.
Settings designed and painted by Eugene B. Dunkel and constructed in the
studios of The San Francisco Opera Association.
Costumes by Stivanello-Culcasi, New York

**STANDING ROOM ONLY AVAILABLE
FOR REMAINING PERFORMANCES**

Encores not permitted — Bell rings three minutes before curtain rises

The Story of "Boris Godounoff"

During the reign of Feodor, weakling son of Ivan the Terrible, a position of great power and responsibility was vested in Boris Godounoff, a friend of Czar Ivan. Although Boris was the all powerful regent he was consumed with ambition and craftily caused the death of Dimitri, second son of Ivan, to whom the throne would have passed on the death of Ivan. When Feodor dies, Boris goes into seclusion in a monastery on the outskirts of Moscow. He pretends not to desire the throne but secretly orders the police to force the populace of Moscow to beg him to assume their leadership.

ACT I

SCENE 1: Outside the monastery walls the people, in fear of the lash of the police, urge Boris to declare himself Czar. When he pretends to be inflexible, a group of pilgrims enter and join in the supplication.

SCENE 2: Pimenn tells Gregory the story of Dimitri's assassination which so fires the imagination of the young monk that he determines to impersonate the slain royal youth and claim the throne.

SCENE 3: Boris accepts the crown and is acclaimed by the populace.

ACT II

SCENE 1: The false Dimitri, who has escaped the monastery, accompanied by Varlaam and Missail, two roistering accomplices, enters and after a brief encounter with some soldiers narrowly escapes arrest and flees across the border.

SCENE 2: Boris tries to comfort Xenia who has recently lost her betrothed, and sends her and Teodoro out to seek the companionship of their friends. Left alone he bemoans his fate in "The Monologue of Boris." Prince Shouisky arrives bearing news of the uprising in Poland in behalf of the false Dimitri. Boris, overcome is once more the prey to remorse.

ACT III

Gregory awaits Marina with whom he is in love. Marina with her banquet guests come into the garden. As they dance the Polonaise the guests toast Marina and swear to banish Boris and his Muscovite followers. In a love scene that follows Marina induces Gregory to lead the attack against Moscow.

ACT IV

SCENE 1: The people are in open revolt. Cries of "Death to Boris" can be heard. Dimitri, the usurper, passes through with some troops on his way to Moscow and draws the crowd with him acclaiming him their lawful Czar. As the stage is cleared, the village idiot is left sitting alone in the falling snow singing a heart-rending ditty on the hopeless condition of Russia.

SCENE 2: The Duma of Boyars are assembled to decide the punishment of the usurper. Before they consider the matter, Shouisky asks Boris, haggard from the terrible visions that are haunting him, to grant an audience with Pimenn, who is waiting outside. Pimenn enters and relates a miracle which had happened at the tomb of Dimitri. He tells of how a blind shepherd, commanded in a dream to appear at Dimitri's tomb, has his vision restored when he kneels in prayer at the grave. A cry of anguish interrupts the old monk. It is Boris, who falls in a faint. Regaining consciousness Boris, feeling himself dying, asks that his son be brought to him. Pointing to Teodoro as his successor he commands him to rule wisely and always protect his sister Xenia. Gasping for breath he dies in agony.



LADIES
PLEASE
REMOVE
YOUR
HATS

BEE & RAY
GOMAN'S
GAY 90'S
555 PACIFIC AVE
"ON THE OLD
BARBARY COAST"
CONTINUOUS
"NAUGHTY
NINETIES"
ENTERTAINMENT

"Original Gibson Girl" drawn by Charles Dana Gibson—1904, for Collier's Weekly.



DIFFERENT SKINS

NEED DIFFERENT FOUNDATIONS

That is why Monteil created *Beauty Balm* and *Sensitone Lotion*—the one for dry or normal skins, the other for those who like a lighter foundation.

Either will keep you beautifully powdered without that powdery look, diffusing your rouge into subtle colors echoes of your own complexion. *Beauty Balm* in white, bronzé and muted rose. *Sensitone Lotion* in natural, sun tan and muted rose.



Germaine Monteil

TUESDAY NIGHT, OCTOBER 23, at 8:00

L'Heure Espagnole

Opera in one act. Music and Libretto by Maurice Ravel.
First time in San Francisco.

THE CAST

Torquemada, aged owner of a clock shop.....ALESSIO DE PAOLIS
Concepcion, his young wife.....LICIA ALBANESE
Gonzalve, her lover.....JOHN GARRIS
Don Inigo Gomez, a banker.....SALVATORE BACCALONI
Ramiro, a muleteer.....MACK HARRELL

CONDUCTOR

GAETANO MEROLA

TIME AND PLACE: Eighteenth Century in Toledo
Scene: The Clock Shop of Torquemada

Followed by

Salome

Opera in one act, by Richard Strauss.
Adapted from Oscar Wilde's romance.

THE CAST

Salome, daughter of Herodias.....LILY DJANEL
Herod, Tetrach of Judea.....FREDERICK JAGEL
Herodias.....MARGARET HARSHAW
Jochanaan, the Prophet.....HERBERT JANSSEN
Narraboth, Captain of the Guard.....JOHN GARRIS
Page of Herodias.....HERTA GLAZ
First Nazarene.....LORENZO ALVARY
Second Nazarene.....ROBIN NELSON
First Soldier.....GEORGE CEHANOVSKY
Second Soldier.....ROBERT MILLS
First Jew.....GEORGE TALLONE
Second Jew.....HERBERT NYSTROM
Third Jew.....ALESSIO DE PAOLIS
Fourth Jew.....JOSEPH TISSIER
Fifth Jew.....CHARLES GOODWIN
A Slave.....ELMA HEITMAN
A Cappadocian.....W. VERNON SANDERS
A Henchman.....*LEO GALT

** San Francisco Opera debut*

Roman Soldiers, Slaves, Musicians, Jews, Nazarenes, Pages, Executioner.

CONDUCTOR

GEORGE SEBASTIAN

STAGE DIRECTOR

ARMANDO AGNINI

TIME AND PLACE: A.D. 30; Tiberias in Galilee

Scene: A Great Terrace of the Palace of Herod
Settings of "L'Heure Espagnol" designed by Armando Agnini and constructed
in the studios of the San Francisco Opera Association.

STANDING ROOM ONLY AVAILABLE
FOR REMAINING PERFORMANCES

Encores not permitted — Bell rings three minutes before curtain rises

The Story of "L'Heure Espagnole"

It is the day for Torquemada, aged owner of a clock shop and government clock repairer, to go on his weekly repair round of the village. But he has forgotten. The young, alluring and sensuous Concepcion has planned an adventure during the absence of her husband. But she has not reckoned on the presence of the muscular Ramiro, a government mulateer, who has come to the shop to have his watch, a highly prized heirloom, adjusted. Concepcion sends her forgetful husband on his way but to her dismay he bids Ramiro await his return.

To clear the scene for the coming of Gonzalve, her poet lover, Concepcion questions the strength of Ramiro and challenges him to carry one of the two big clocks in the shop up to her room. Gonzalve arrives but seems more interested in his poetry than in her charms and is in no haste to pursue his love making. Ramiro comes back into the shop and, pleading caprice, Concepcion asks him to bring back the first clock and carry the second one, in which she has secreted Gonzalve, to her room in its stead. Don Inigo Gomez, also bent on love making and infatuated with Concepcion, enters the shop and when Ramiro returns with the first clock to carry the clock in which Gonzalve is hidden to her room, the alarmed Concepcion declares that the clock is very delicate and that she must personally see that it is carried safely. She bids Don Inigo good bye and follows Ramiro.

But the ardent banker will not be so easily dismissed and hides himself in the first clock. Concepcion, in a rage at the unresponsive Gonzalve, flounces back into the shop. She passionately laments his lack of ardor and bids Ramiro bring the clock back from her room. Which the muscular mulateer does and then asks if she now wants the clock in which Don Inigo is hidden, carried to her room. Quickly deciding, Concepcion so orders and regards the mulateer with amazed admiration as he lifts the clock to his shoulders with the greatest of ease.

Concepcion commands Gonzalve to come out of his clock but the poet refuses. Noting her agitation on his return Ramiro asks if she wants the clock now in her room brought back. She does and he again carries the heavy burden without apparent effort. And then, realizing his physical allure, Concepcion requests that Ramiro go to her room—without a clock. She follows.

At this moment Torquemada returns to find the two lovers moping sadly in the clocks. He releases them and with Concepcion and Ramiro, who have come back into the shop, joins in a jolly quintette.

Business eyes turn West—and widen!

Congestions of war, imposed upon our Western economy, serve usefully to "discover" the basic resources of the West, the capacity of the West to produce and manufacture, and the nearness of our Pacific Coast to the huge postwar markets surrounding the world's biggest waterway.

These facts, known here, now are being regarded with quickening appreciation elsewhere. Colored pins are being shifted west on boardroom wall maps in many a home office.

This Bank, for over eighty years associated with the sensible development of our Pacific Coast, offers two advantages to business and industry. First, our long-established offices in all three Pacific Coast states afford on-the-ground service fitted to each area. Second, our Foreign Exchange department is thoroughly familiar with market contacts throughout the Pacific Basin. For business with or on the Coast or through our ports into the Pacific, the established contacts and long experience of this Bank can be of definite value.

*Head Office: 400 CALIFORNIA STREET
Mission Branch: 16TH & JULIAN AVENUE*

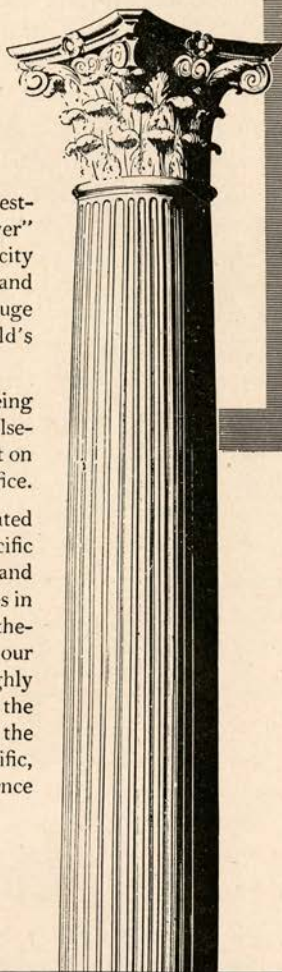
THE BANK OF CALIFORNIA

NATIONAL ASSOCIATION

Founded in 1864

Member Federal Deposit Insurance Corporation

SAN FRANCISCO • PORTLAND • SEATTLE • TACOMA



The Story of "Salome"

Jochanaan, the Prophet, has been imprisoned by Herod because of his teachings. But fearing the Jews, Herod will not put him to death. Narraboth, who is madly infatuated with the beautiful and sensuous Salome, and his soldiers guard the entrance to a banquet hall where revel reigns. Salome, tired of the banquet and the sensuous advances of Herod, comes onto the terrace. She hears Jochanaan's voice coming from the cistern in which he is held prisoner and demands that he be brought out. Unable to resist her cajoling, Narraboth complies. Jochanaan begins a terrible denunciation of Herodias. Salome falls wildly in love with him and gives vent to her infatuation in abandoned song. Denouncing her Jochanaan descends into the cistern and Narraboth, crazed by what he has witnessed, kills himself. Herod, Herodias and the entire court come onto the terrace. The warning voice of the Prophet is heard from the cistern. Herodias urges the king to order his execution but Herod, still fearing the Jews, refuses. Herod then commands Salome to dance for him but she refuses unless he gives her whatever she may ask for. At his promise Salome begins the Dance of the Veils and at the urging of Herodias claims the head of Jochanaan for her reward. The horrified Herod begs release from his promise but Salome will not be dissuaded. A headsman descends into the cistern and comes up with the dripping head of Jochanaan on a platter. Salome receives the head from the executioner and with abandon pours out her amorousness for the white flesh of Jochanaan. But when she kisses the lifeless lips Herod can stand no more and at his command the guards crush the ghoulish princess to death under their shields.

SUBSCRIPTION BLANK

\$1 for 1 year

Opera, Concert and Symphony

OPERA & CONCERT

700 Montgomery Street

San Francisco 11, California

Gentlemen: Enclosed is \$1. Send OPERA AND CONCERT to the following address for one year:

Name _____

Street _____

City _____ Zone No. _____ State _____

OPERA BOX HOLDERS

Season 1945

MR. AND MRS. GEORGE WASHINGTON BAKER, JR.	MR. AND MRS. ARTHUR DALE KING
MRS. GEORGE EDWIN BENNETT	MRS. MARCUS S. KOSHLAND
MR. AND MRS. CHARLES R. BLYTH	MRS. SAMUEL KNIGHT
MR. AND MRS. JAMES PARKS BRADLEY	MRS. RICHARD MCCREERY
MR. AND MRS. JOHN DAVIS BRADLEY	MR. AND MRS. JUILLARD McDONALD
MR. AND MRS. ROY BRONSON	MRS. FELIX MCGINNIS
MR. AND MRS. GEORGE T. CAMERON	MR. AND MRS. FREDERICK W. MCNEAR
MR. AND MRS. JOHN B. CELLA	MR. AND MRS. GAETANO MEROLA
MR. AND MRS. WILLIAM W. CROCKER	MR. AND MRS. C. O. G. MILLER
MRS. FRANK P. DEERING	MRS. EPPS J. MILLER
MR. AND MRS. SIDNEY M. EHRMAN	MR. AND MRS. KENNETH MONTEAGLE
MR. AND MRS. MORTIMER FLEISHACKER	MRS. RYER NIXON
DR. AND MRS. FRANK R. GIRARD	MRS. ARLINE M. ROLKIN
MR. AND MRS. JOSEPH T. GRACE	MRS. HENRY POTTER RUSSELL
MRS. CRESCENT PORTER HALE	SAN FRANCISCO OPERA GUILD
MRS. PRENTIS COBB HALE	JUDGE AND MRS. M. C. SLOSS
MR. AND MRS. CHARLES L. HARNEY	MRS. SIGMUND STERN
MRS. I. W. HELLMAN	MR. AND MRS. NION R. TUCKER
MR. AND MRS. CLARENCE LORAN JOHNSTON	MR. AND MRS. KARL C. WEBER

FERRARI  **NICOLAUS**
AND FORMER FIRM OF **TRAINER & PARSONS**

Dispensing Opticians

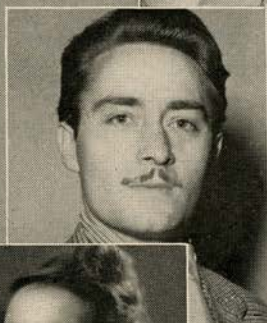
**444 POST
SAN FRANCISCO**

PISANI PRINTING & PUBLISHING CO.

Fine Printing



700 MONTGOMERY STREET • PHONE SUTter 4772
SAN FRANCISCO



CLARAMAE TURNER

ROBERT MILLS

KATHLEEN LAWLOR

CHARLES GOODWIN

EVELYN CORVELLO

GEORGE TALLONE

MURIEL DEMERS

HERBERT NYSTROM

LORRAINE CALCAGNO

ROBIN NELSON

BETTIE SANDERSON

Artists of the San Francisco OPERA COMPANY



Atop Nob Hill

ZEBRA ROOM

COCKTAILS

LUNCH * DINNER

An atmosphere of cultured intimacy where
meals are better and enjoyment is enhanced
by NELLE CALLAHAN at the
Hammond Organ



HUNTINGTON HOTEL

NOB HILL

1075 CALIFORNIA

EUGENE N. FRITZ, Managing Owner

COLUMBIA CONCERTS, INC.

Presents

"GREAT NAMES IN MUSIC"



Appearing 1945 San Francisco Opera Season

LICIA ALBANESE
LORENZO ALVARY
CHARLES KULLMAN

MARGARET HARSHAW
LILY PONS
RISE STEVENS



Appearing San Francisco Opera Concert Series, 1945-1946

HEIFETZ
JUSSI BJOERLING
JENNIE TOUREL
ROSARIO and ANTONIO

RUDOLF SERKIN
YEHUDI MENUHIN
PAUL ROBESON
HELEN TRAUBEL



COLUMBIA CONCERTS, Inc., 113 West 57th Street, New York

San Francisco Representative, PAUL POSZ, War Memorial Opera House

Los Angeles Representative, L. E. BEHYMER, 415 Auditorium Building

SAN FRANCISCO TRADITION

BEFORE THE OPERA

...Dine in the exquisite Garden Court

AFTER THE OPERA

...Dance in the Rose Room to the music of

DEL COURTNEY

and his orchestra

The Palace Hotel

EDMOND A. RIEDER, General Manager

FREE

Opera Broadcast Program

☆ The San Francisco Opera Company's 23rd Annual Season is being broadcast over radio station KFRC.

To better enjoy the operas you are unable to attend, Safeway has prepared a 56-page souvenir broadcast program.

For your free Opera Program write Post Office Box 2189, San Francisco 26, California.

These broadcast programs are available in the foyer of the Opera House.



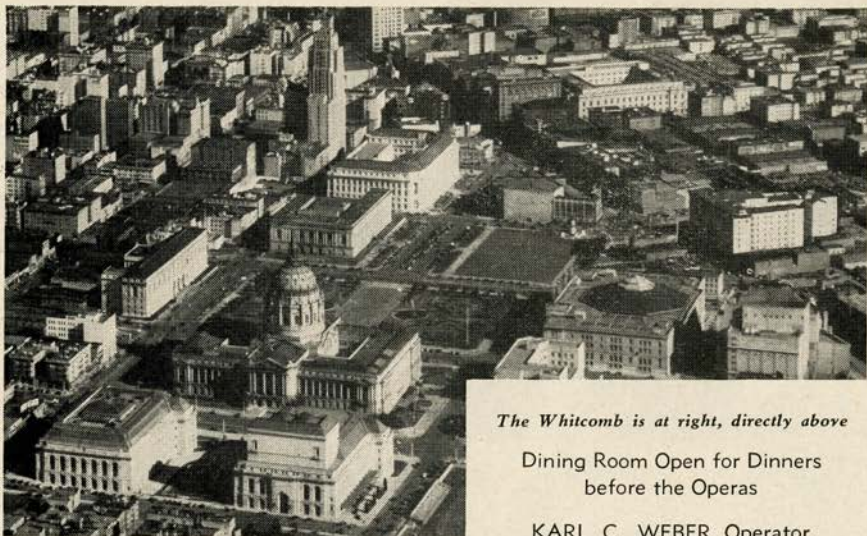
JOSEPH TISSIER
 ROSE AGNES HERSCH
 EVARISTO ALIBERTINI
 PAUL GUENTER

ELMA HEITMAN
 MARILYNN KING
 BIANCA BRUNI
 FREDERIC WILLIAMS

BRITTA ANDERSON
 AUGUSTO LORENZO
 BENJAMIN MARTIN
 ROBERT BRUCE MACKAY

LEO GALT
 MAX LORENZINI
 W. VERNON SANDERS
 PAUL LEIBER

Artists of the San Francisco
 OPERA COMPANY



The Whitcomb is at right, directly above

Dining Room Open for Dinners
before the Operas

KARL C. WEBER, Operator

SAN FRANCISCO'S LEADING HOTEL AT THE CIVIC CENTER

HOTEL WHITCOMB

*Plan Today for
Tomorrow*

"PAY CASH and SAVE"

WEINSTEIN CO.

• 1041 MARKET ST.

• 100 MARKET ST. • 1620 POLK ST.

• 615 MARKET ST. • 119 POST ST.

HOW TO PRONOUNCE THEIR NAMES

LICIA ALBANESE	HERBERT JANSSEN	<i>Herbert Yahn'-senn</i>
<i>Lee'-chee-ah Ahl-bah-nay'-zay</i>	RAOUL JOBIN	<i>Rah-ool Zhoh-ban'</i>
LORENZO ALVARY	BRUNO LANDI	<i>Brewno Lahn'-dee</i>
ARMANDO AGNINI	LOTTE LEHMAN	<i>Lotte Lay'-mahn</i>
<i>Ar-mahn'-dow Ah-nee'nee</i>	LAURITZ MELCHIOR	<i>Lauritz Mell'-kee-or</i>
SALVATORE BACCALONI	GAETANO MEROLA	<i>Gah-yay-tahn'-oh Mare'-oh-lah</i>
<i>Sahl-vah-tow'-ray Bach-ah-low'-nee</i>	IVAN PETROFF	<i>Ee-vahn Pet-roff</i>
ETIENNE BARONE	EZIO PINZA	<i>Et'-see-oh Peen'-zah</i>
<i>Et-yehn Bah-row'-nay</i>	LILY PONS	<i>Lee-lee Pawnce</i>
FRANCES CASTELLANI	ANITA RAGUSA	<i>Anita Rah-goo'-sah</i>
<i>Frances Kah-stay-lahn'-ee</i>	HILDE REGGIANI	<i>Hill-day Rah-jah'-nee</i>
GEORGE CEHANOVSKY	KARL RIEDEL	<i>Karl Ree'-del</i>
<i>George Chay-han-off'-skee</i>	STELLA ROMAN	<i>Stay-lah Row-mahn'</i>
VIVIAN DELLA CHIESA	ELEANOR STEBER	<i>Eleanor Stee'-burr</i>
<i>Vivian Dell-lah-Kee-ay'-zah</i>	RISE STEVENS	<i>Ree'-suh Stevens</i>
OTELLO CERONI	HELEN TRAUBEL	<i>Helen Trah'-oo-bell</i>
<i>Otello Chay-row'-nee</i>	FRANCESCO VALENTINO	<i>Francesco Vah-lenn-teen'-oh</i>
ANTONIO DELL'OREFICE		
<i>Antonio Dell-oh-reff'-ee-chay</i>		
ALESSIO DE PAOLIS		
<i>Ah-less'-see-oh Deh Pah'-oh-leece</i>		
LILY DJANEL		
<i>Lee-lee Zhan-nell</i>		
HERTA GLAZ		
<i>Hair-tah Glahz</i>		
FREDERIC JAGEL		
<i>Frederick Yay-gel</i>		

BELFAST

★
 Manufactured
 by the makers
 of
 BELFAST
 Dry
 GINGER ALE
 Famous
 Since 1877



*Sparkling
 Water*

PURE, wholesome and delightful to the taste, Belfast Sparkling Water is the ideal table beverage...it is *supreme* among the better mixers — heightens the flavor of other beverages and gives longer-lasting sparkle in the glass.

★

BELFAST BEVERAGE CO.
 820 Pacific Avenue DOuglas 0547 San Francisco



KQW and CBS

present

Radio's Finest
Dramatic entertainment
on

**THE LUX RADIO
THEATRE**

6:00 - 7:00 p.m.
Every Monday

KQW

The Columbia Station
for the San Francisco
Bay Area

740 on the dial

Gantner Swimsuits

***San Francisco's
proudest and
America's finest***

Top . . . Black Magic Nylon
Sarong . . . very light and quick
drying! One of many beautiful
Gantner styles which have be-
come famous.

GANTNER & MATTERN CO.

San Francisco • Chicago • New York

VISIT...

The Cocktail Lounge
of Distinctive
Atmosphere

**CARDINAL
RICHELIEU
ROOM**

Van Ness at Geary
"Just a Short Walk"

● Milan Lambert
at the Organ

RICHELIEU HOTEL
Leopold Lerner, Manager

GUARANTOR MEMBERS

of the

SAN FRANCISCO OPERA ASSOCIATION

Mrs. L. C. Abbott
 S. L. Abbott
 C. Edgar Adams
 Mrs. C. R. Adams
 Albert N. Ades
 Mrs. John S. Adler
 Mrs. Wallace Alexander
 Lucy H. Allyne
 T. E. Ambrose
 Thelma Anderson
 F. W. Armour
 Lawrence H. Arnstein
 Edward R. Bacon
 Mr. and Mrs. Frazier Bailey
 Elsa M. Baker
 Mr. and Mrs. George
 Washington Baker, Jr.
 Baldwin Piano Co.
 A. R. Baldwin
 B. A. Banker
 Mrs. John Thomas Barnett
 Peter Barnett
 J. F. Barrett
 Mrs. Edward F. Barron
 Irving Bartel
 Harriett Bathgate
 Dominic A. Bazzanella
 Mr. and Mrs. R. S. Beall
 Mr. and Mrs. F. N. Belgrano, Jr.
 Melvin Belli
 David Benioff
 Mrs. George Edwin Bennett
 Mrs. Charles H. Bentley
 Mrs. Walter H. Bentley
 Franklin L. Besley
 Elsie A. Best
 Dr. Tholow Binkley
 Mrs. James H. Bishop
 Newton Bissinger
 W. Harry Blatchly
 Louis Bloch

Mrs. Arthur L. Bloomfield
 Mr. and Mrs. Charles R. Blyth
 Mrs. Angus Gordon Boggs
 Mrs. Robert C. Bolton
 Mrs. F. E. Boyd
 Louise A. Boyd
 Mr. and Mrs. James Parks
 Bradley
 Mr. and Mrs. John Davis Bradley
 Mr. and Mrs. Walter C. Brauns
 G. Temple Bridgman
 Mrs. William Ellery Briggs
 Roy A. Bronson
 Mrs. John F. Brooke
 Julia Fox Brooke
 George W. Brooks
 Dr. LeRoy Brooks
 Arthur M. Brown, Jr.
 J. Arthur Brown
 James A. Brown
 Mr. and Mrs. Louis C. Brown
 Ralph Brown
 Walter D. Brown
 Mrs. E. E. Brownell
 Starr Bruce
 Frank J. Brucato
 Frank E. Buck
 Leonard W. Buck
 Thomas Buck
 Mr. and Mrs. F. Neil Buckley
 Daniel W. Burbank
 Mrs. Prentis T. Burtis
 Dr. and Mrs. Edmund Butler
 Mrs. Felix Butte
 Mrs. John R. Cahill
 Dr. William Otis Callaway
 Mr. and Mrs. George T. Cameron
 Lillian Campbell
 Estelle Carpenter
 Craig Carrier
 Kenneth Cassidy

Augustine Cazenave
 Mr. and Mrs. John B. Cella
 Selah Chamberlain, Jr.
 E. M. Chandler
 Drew Chidester
 Charles A. Cristin
 John J. Cimino
 Mrs. Baylies V. Clark
 Maud H. Clark
 S. G. Clark
 Mrs. Tobin Clark
 Capt. and Mrs. Robert A. Clarke
 Mrs. John P. Coghlan
 Mr. and Mrs. George D. Cohn
 Mrs. Max M. Cohn
 Mrs. Colbert Coldwell
 Persis H. Coleman
 H. D. Collier
 Mr. and Mrs. Jesse C. Colman
 J. J. Coney
 Mary R. Conlin
 Dr. and Mrs. Frederick C. Cordes
 Arthur S. Crites
 Carrie Bell Crocker
 Mr. and Mrs. W. W. Crocker
 George E. Crothers
 Thomas B. Crowley
 Ralph K. Davies
 Alvin Davis
 Mr. and Mrs. Stuart Davis
 Florence E. Dean
 Mrs. Charles J. Deering
 Mrs. Frank P. Deering
 Mrs. George deLatour
 Dr. Joseph Del Genovese
 Mrs. Walter A. de Martini
 Frank H. Denman
 John Michael Desch
 Richard Detert
 Mrs. Robert T. Devlin
 Mrs. B. J. Dietrich



Orchids

from Podesta & Baldocchi,
 America's Most Famous
 Florist, make any occasion
 more festive.

Podesta & Baldocchi

America's Most Famous Florists

Telephone: SUtter 6200

224 GRANT AVENUE, SAN FRANCISCO

★ ★ ★ ★ ★ ★ ★ ★



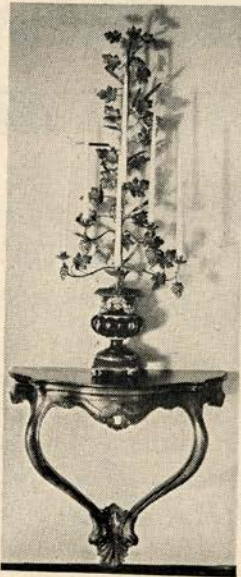
ATTIL HARP SCHOOL

*KAJETAN ATTL, formerly 28 years First Harpist with the
San Francisco Symphony and Opera Association*

INSTRUCTION IN HARP
HARPS — MUSIC AND STRINGS

1030 BUSH STREET, SAN FRANCISCO
PHONE: ORDWAY 6367

Artist Students available for engagements



Fine Antiques

★

*Excellent
Craftsmanship*

★

K. H. LENGFELD

Interior Decorator

★

1409 SUTTER STREET, SAN FRANCISCO

GUARANTOR MEMBERS—Continued

- | | | |
|---|--|---|
| <p>Mrs. L. W. Dinkelspiel
Mrs. Samuel L. Dinkelspiel
N. S. Dodge
Mrs. Robert Dollar II
Mrs. Leo Domb
O. Dewey Donnell, Jr.
Katharine Donohoe
Mrs. F. A. Dorn
D. C. Dorward
F. M. Dorward
R. E. Doyle
Elsie L. Dunbar
Mrs. Frank H. Dunne
Mrs. Charles Dunphy
Mrs. Dunne Dutton
Capt. and Mrs. James J. Dwyer, Jr.
Dr. and Mrs. George Ebricht
Dr. Muriel E. Edwards
Albert L. Ehrman
Alexis L. Ehrman, Jr.
Mrs. Alfred Ehrman
Mr. and Mrs. Sidney M. Ehrman
Wilfred Eldred
H. A. Ellis
John W. Elwood
Mark C. Elworthy
G. Epstein
Mrs. Milton H. Esberg
Milton H. Esberg, Jr.
L. Ets-Hokin
Dr. and Mrs. Harold K. Faber
F. C. Fabry
Arthur C. Farlow
Paul I. Fagan
Alfred Fasani
Lionel B. Feigenbaum
James E. Fickett
Mrs. Marshall Fisher
James Fisher-Northrop
Carl Fleschler
Mr. and Mrs. Mortimer Fleishacker
John F. Forbes
Mr. and Mrs. Edward T. Ford
Francis F. Forsell
Mr. and Mrs. T. G. Franck
Mrs. Jennie S. Frank
Lt. and Mrs. Richard L. Frank
Dr. Charles L. Freytag
Mr. William Fries
Kenneth E. Fultz-Vayette
Nelly Gaffney
Mr. and Mrs. Maurice A. Gale
L. Galtie
Gordon L. Gates
Mr. and Mrs. Henry Gede, Jr.
Dr. Ernst Gehrels
Alvin Gerlack
Mark L. Gerstle
Mrs. D. Ghirardelli
D. Lyle Ghirardelli</p> | <p>Dr. Arthur Collis Gibson
Maud M. Gibson
George B. Gillson
Dr. and Mrs. Frank R. Girard
Mr. and Mrs. Harry F. Gittings, Jr.
J. Harry Goff
Maurice L. Goldman
Mr. and Mrs. Louis S. Goldstein
Lutie D. Goldstein
Jack Gomperts
Mrs. Thomas Gonda
Lorraine C. Goodman
Dr. William A. Gorman
Mr. and Mrs. Joseph T. Grace
Mrs. Joseph D. Grant
Mrs. Richard Gray
Mrs. Maurice S. Greenberg
Mr. and Mrs. Stuart N. Greenberg
Mrs. F. S. Greenlee
Mrs. Hayes Griffin
Mark E. Guerin
Mr. and Mrs. Berthold Guggenlime
Gustav G. Gumpel
Mrs. Alfred S. Gunn
Madeleine Haas
Mrs. Crescent Porter Hale
Marshal Hale
Mrs. Prentis Cobb Hale
Prentis C. Hale, Jr.
R. B. Hale
Herbert E. Hall
Eminel P. Halsted
Marshall S. Hanrahan
Mr. R. C. Hansen
Mrs. Robert D. Harden
W. G. Harmon
Mr. and Mrs. Charles L. Harney
Irving F. Harris
Gregory A. Harrison
Maurice E. Harrison
Mrs. Henry H. Hart
S. M. Haslett
Mrs. Russell P. Hastings
Mrs. Juanita O. Hatch
Mr. and Mrs. Elystus Hayes
Mrs. Timothy Hayes
A. W. Hazen
Mrs. E. S. Heller
Mr. and Mrs. Walter D. Heller
Walter S. Heller
Mrs. I. W. Hellman
Mrs. Robert Henderson
Dr. and Mrs. Ernest E. Hessing
Mr. and Mrs. Stanley Hiller
Mr. and Mrs. Leslie W. Hills
Harry H. Hilp
J. H. Hinrichsen
Barnard J. Hirsch
George H. Holt
Osgood Hooker
Mr. and Mrs. L. Arundel Hopkins
Mrs. Samuel Hopkins</p> | <p>Robert A. Hornby
Mrs. H. A. Hornlein
Kurt Huber
Robert Hulbert
Dr. Harvey S. Hunsberger
Marian Huntington
Mrs. William Hyman
Mrs. James Irvine
Dr. S. Nicholas Jacobs
R. J. Jansen
Mr. and Mrs. Louis Jefferys
Otto Jeldels
Mrs. Charles A. Jewel
Mr. and Mrs. Clarence Loran Johnston
Ector R. Johnson
Mrs. Sophie Johnson
Major General Kenyon A. Joyce
Mrs. Chester W. Judson
Jean Juillard
Mrs. Ira Kahn
Mr. and Mrs. Samuel Kahn
Henry J. Kaiser
Walter F. Kaplan
S. Kauffman
Mr. and Mrs. Edward D. Keil
H. C. Kelsey
Charles Kendrick
Easton Kent
Mr. and Mrs. Marion H. Kent
Mr. and Mrs. Arthur Dale King
Percy L. King
Dr. John J. Kingston
John E. Kinney
R. W. Kinney
Mrs. Josephine R. Kleinjung
Paul L. Kleinsorge
Mrs. William E. Kleinsorge
Robert L. Kline
Mrs. Samuel Knight
Caroline Korbel
Elsa R. Korbel
Mrs. Jesse Koshland
Mrs. Marcus S. Koshland
Frederick J. Koster
Mrs. C. M. Kretchmer
Dr. Henry M. Kreutzmann
Mr. and Mrs. E. V. Krick
Gus Kroesen
Theodore Kroesen
Esther Kuenz
Gustave Lachman
Mrs. Albert G. Lang
Mrs. Philip V. H. Lansdale
Mrs. Charles G. Lathrop
Mrs. H. M. Lawrence
L. H. Lazarus
Edwin Leitch
Leopold Lerner
John A. Lesoine
Mr. and Mrs. Paul Levey
Robert L. Levin</p> |
|---|--|---|

CLAIRE BROWN

278
POST ST.

NEW HATS FOR FALL

ADELE MORAN

INFANTS AND CHILDREN'S WEAR
EXCLUSIVELY

Formerly with H. Liebes & Co.

18 Tillman Place

Next door to Temple Bar Tearoom

THE SAN FRANCISCO BALLET GUILD
Mrs. Juilliard McDonald, Pres.

Announces

San Francisco Ballet

WILLAM CHRISTENSEN
Artistic Director

HAROLD CHRISTENSEN
Ballet School Director

REYNOLD WIGGINS
Business Manager

in their

Third Annual Holiday Ballet Season

Children's Christmas Matinee

SUNDAY, DEC. 23

Gala Holiday Evenings

WEDNESDAY - - - - - DEC. 26

THURSDAY - - - - - DEC. 27

WAR MEMORIAL OPERA HOUSE

STOCKTON - - - - - FRIDAY, DEC. 28

SACRAMENTO - - - - - SATURDAY, DEC. 29

OAKLAND - - - - - SUNDAY, DEC. 30

The Ballet leaves for their eastern tour on Feb. 1st
returning May 1st

for the

Spring Ballet Homecoming

(Date to be announced)

Tickets for Holiday Ballet On Sale Normandy Lane Box Office. EX 8585

GUARANTOR MEMBERS—Continued

- J. B. Levison
 Azro N. Lewis
 Mrs. A. J. Lewthwaite
 Mrs. Samuel Lilienthal
 P. N. Lilienthal
 Mr. and Mrs. William J. Lindenberg
 F. L. Lipman
 Mrs. Norman B. Livermore
 Lawrence Livingston
 James K. Lothead
 George D. Lodvick
 J. W. Longe
 Louis R. Lurie
 Carl D. Lovotti
 James Rowland Lowe
 Mrs. A. D. Lowengart
 Mrs. A. J. Lowrey
 Edmunds Lyman
 Edna May Lyon
 James W. McAlister
 Mrs. T. R. McCarron
 Mr. and Mrs. A. M. McCarty
 Albert Connell McCary
 Mrs. Wm. H. McCormick
 Mrs. Richard S. McCreery
 Mr. and Mrs. Juilliard McDonald
 Mrs. Mark L. McDonald
 Mrs. John McGaw
 Mrs. Felix S. McGinnis
 Mrs. Lacy Maclean
 Mrs. Alfred McLaughlin
 Mrs. Clarissa McMahon
 Dean Brown McNealy
 Mr. and Mrs. F. W. McNear
 Mrs. George P. McNear
 Mr. and Mrs. Victor Maas
 Mrs. A. MacDonald
 Mr. and Mrs. John B. Mackinlay
 Marshall P. Madison
 Mr. and Mrs. Grover A. Magnin
 F. Bruce Maiden
 Mrs. J. W. Mailliard, Jr.
 Mr. and Mrs. Joseph A. Mancini
 A. F. Manspeaker
 Mr. and Mrs. George M. Mardikian
 Dorothy S. Marion
 Mr. and Mrs. Randolph Wyatt Martenet
 Edward Martin
 A. C. Mattei
 Mrs. Jack Maxfield
 Dr. Alice F. Maxwell
 Mr. and Mrs. Harry O. Maxwell
 Evelyn Mendessolle
 Mr. and Mrs. Gaetano Merola
 Mrs. H. C. Merritt, Jr.
 Mrs. Julian J. Meyer
 Olga M. Meyer
 Merwin A. Meyers
 Mr. and Mrs. Van Vissing Midgely
 Mr. and Mrs. C. O. G. Miller
 Mrs. Epps J. Miller
 Mrs. Maxwell C. Milton
 Henrietta Moffat
 Mr. and Mrs. Edward F. Moffatt
 James K. Moffitt
 Charles W. Moisson
 Mario Mondin
 Mr. and Mrs. Kenneth Monteagle
 Mr. and Mrs. Paige Monteagle
 Frederick H. Montgomery
 Mrs. Joseph A. Moore
 A. C. Moric
 Marion Morris
 Mrs. H. D. Mortenson
 Guido J. Musto
 Laura Musto
 Marion Naffziger
 E. M. Nagel
 Mr. and Mrs. Ralph R. Nelson
 Julia M. Neppert
 Hugo D. Newhouse
 Dr. and Mrs. Alfred Newman
 Richard C. Newmeyer
 John Francis Neylan
 George W. Nickel
 Mrs. Ryer Nixon
 Harry Ogilvie
 Carl F. Ohliger
 Benjamin J. Older
 Mr. and Mrs. Edwin Letts Oliver
 George R. Orme
 Dr. B. H. Page
 Charles R. Page
 Mrs. S. H. Palmer
 T. B. Palmer
 Lorriene Parisen
 Mrs. Henry Passow
 Dr. Sadie D. Patek
 Gertrude Pauson
 Mrs. Oscar Butler Perry
 Howard Peterson
 George W. Phillips, Jr.
 Mrs. Margaret A. Phillips
 Mrs. Herman Phleger
 Tecla Pieper
 Mr. and Mrs. G. Pisani
 Mrs. H. D. Pischel
 A. Poladian
 Mrs. Paul Posz
 Mrs. Ashton H. Potter
 Mr. and Mrs. Stanley Powell
 Colonel John Sedgwick Pratt
 Walter G. Preddy
 Dr. Edward Purcell
 Mr. and Mrs. John B. Quigley
 Mrs. Carl Raiss
 Mrs. Lloyd F. Reighley
 Dr. Ralph A. Reynolds
 Neville J. Rich
 H. A. Richardson
 Mrs. H. W. Richards
 Mrs. Robert Ritchie
 Harrison S. Robinson
 Dr. Frank H. Rodin
 Mrs. Nathan Rogers
 Arline Miller Rolkin
 Colonel Robert A. Roos
 John N. Rosekrans
 Leland S. Rosener
 Alexander Ross
 Donald L. Ross
 Edmund A. Rossi
 Mrs. Angela Wing Roth
 Mrs. William P. Roth
 John Rothschild
 Ken F. Royce
 Mohr M. Rubin
 Frank K. Runyon
 Mrs. A. S. Russell
 Michael J. Ryan
 Charles B. Sanders
 Robert H. Scanlon
 Carl Schaubye
 Else Schilling
 Dr. Walter Schilling
 George B. Schirmer
 Dr. G. D. Schoonmaker
 Mr. and Mrs. Albert E. Schwabacher
 Mrs. Frank Schwabacher
 James H. Schwabacher
 Mrs. Louis A. Schwabacher
 Mr. and Mrs. Harry S. Scott
 Dr. Henry W. Scott
 Marcella C. Sedgley
 Albert Seligson
 Mr. and Mrs. R. H. Shainwald
 Mr. and Mrs. R. S. Shainwald
 Mrs. Nelson T. Shaw
 Fred R. Sherman
 Mr. and Mrs. Ray Simonds
 R. O. Simon
 Mrs. Norman J. Sinclair
 Mrs. Edgar Sinton
 Genevieve Six
 Charles W. Slack
 Mrs. Leon Sloss
 Judge and Mrs. M. C. Sloss
 Stanley C. Smallwood
 Edward J. Smiddy
 Mr. and Mrs. Charles Watt Smith
 DeLancey Smith
 Jack Soderlund
 George Willard Somers
 Mr. and Mrs. Herbert L. Sommer
 Fred H. Spiess
 Mrs. E. B. Stanwood
 G. A. Starkweather
 Glen C. Stater
 Mrs. Harold S. Stein
 Ralph J. A. Stern
 Mrs. Sigmund Stern
 Claude Albon Stiehl
 Dr. John Philip Strickler
 John Robert Strickler
 Benka Strickler
 Lieut. C. W. Sudderth
 Walter H. Sullivan
 E. J. Sultan
 Bert O. Summers
 Mrs. Alfred Sutor
 Louis Sutter
 Ernest J. Sweetland
 Mrs. Andrew B. Talbot
 Dr. W. R. Taylor
 Charles Tesseyman
 George C. Thierbach
 B. Wade Thompson
 Mrs. Myron I. Thomas
 William Timson
 C. R. Tobin
 Mrs. Edward Topham, Jr.
 Mr. and Mrs. Ernest J. Torregano
 Dr. and Mrs. H. G. Trimble
 Mrs. Alfred Tubbs
 Mr. and Mrs. Nion R. Tucker
 Mr. and Mrs. Daniel Volkmann
 Dr. E. P. M. Von Gehren
 Mrs. Norman L. Waggoner
 George Wagner
 Mrs. Willis J. Walker
 Morton Wallace
 Whitney Warren
 Mr. and Mrs. Karl C. Weber
 Michel D. Weill
 Lieut. Comdr. Nat. S. West
 Dr. and Mrs. H. M. Weyrauch
 Anna Louise White
 Bonnie Whitcomb
 Lieut. and Mrs. Fred Whitman
 William A. P. White
 George B. White
 Mrs. Millard C. White
 Mrs. Frederick A. Wickett
 Robert L. Wiel
 Mr. and Mrs. Brayton Wilbur
 Charles T. Williams
 Mrs. Selden Williams
 Stephen Williams
 Lt. W. F. Willmette
 Mrs. J. L. Wolf
 Mr. and Mrs. Harold L. Wright
 Barbara Young
 Dwayne G. Young
 Mrs. V. Zaruba
 J. D. Zellerbach
 Edgar T. Zook
 Kenneth C. Zwerin

BUY WAR BONDS AND STAMPS



ALBERT DAINI

Distinctive

DRAPERIES

UPHOLSTERING

This table as illustrated
is one of our own creations
made in our own shop.

1529 PINE STREET NEAR POLK • ORDWAY 6316

RUSSIAN *Atmosphere*

RUSSIAN *Music*

RUSSIAN *Food*

BALALAIKA

Russian Restaurant

960 Bush St., S.F.
Tel. OR. 8976

Cocktails · Dinners
Gypsy Music

D. Dee, Manager



Alioto's FISH GROTTO

Phil Rubino
Manager

STEAKS - CHOPS

ALSO SERVED



No. 8 Fisherman's Wharf
San Francisco

Open till 2 a.m.
Saturdays 3 a.m.

SAN FRANCISCO OPERA GUILD, INC.

MRS. ROGER D. LAPHAM, JR., *Chairman*

MRS. JOHN PHILLIP COGHLAN, JR., *Vice-Chairman*

MRS. STANLEY POWELL, *Vice-Chairman*

MRS. FREDERICK WHITMAN, *Secretary*

MR. JERD SULLIVAN, *Treasurer*

Members

Mrs. Lloyd S. Ackerman
Mr. and Mrs. Arthur C. Adams
Mr. and Mrs. C. Edgar Adams
Mrs. John S. Adler
Mrs. Alexander Albert
Mrs. Douglas Alexander
Mrs. Wallace M. Alexander
Miss Edith W. Allyne
Miss Lucy H. Allyne
Mrs. R. M. Alvord
Mr. T. E. Ambrose
Mrs. Berrien Anderson
Miss Margaret Andrews
Mrs. Leonora Wood Armsby
Miss Lillian Armsby
Mr. Noel T. Arnold
Dr. Charlotte C. Baer
Mrs. Horace S. Baker
Mrs. George Washington Baker, Jr.
Mrs. William P. Baker
Mrs. Edward F. Barron
Mrs. R. M. Barthold
Mrs. Edward Otis Bartlett
Mrs. F. Bauden
Mrs. Samuel Bauer
Mrs. Charles Beardsley
Mr. S. D. Bechtel
Mrs. Julian Palmer Beek
Dr. Bernard C. Begley
Mrs. Reed J. Bekins
Mr. and Mrs. F. N. Belgrano, Jr.
Mrs. George Edwin Bennett
Mrs. G. Grace Benoit
Mrs. Charles H. Bentley
Mrs. Walter H. Bentley
Miss Jessie E. Benton
Mrs. Dikrian M. Berberian
Mrs. E. Bianco
Dr. and Mrs. Tholow Binkley
Mrs. James Arthur Bishop
Mrs. James Hall Bishop
Mrs. Charles N. Black
Miss Jennie M. Blair
Miss Phyllis Bliss
Mr. Louis Bloch
Miss Ruth V. Bloch
Mr. and Mrs. Charles R. Blyth
Mrs. Angus Gordon Boggs
Mr. and Mrs. Harold W. Bonner
Mrs. M. A. Bowen
Mrs. F. H. Bowles
Miss Louise A. Boyd
Miss Nina Boyle
Mrs. James Parks Bradley
Mrs. John D. Bradley
Mrs. W. C. Brauns
Mrs. A. F. Bray
Mrs. John N. Breeden
Miss Marie Brewer
Mrs. William Briggs
Mrs. L. H. Brinck
Miss Bogardus Brodt
Mrs. Julia Fox Brooke
Mr. Arthur M. Brown, Jr.
Mrs. Cabot Brown
Mrs. Hillyer Brown
Mr. and Mrs. James Brown
Mrs. Walter D. Brown
Dr. Walter H. Brown
Mr. Frank J. Brucato
Mrs. Starr Bruce
Mr. Starr Bruce
Mr. Leo Bruck
Mrs. B. J. Brun
Dr. Edward John Buckley
Mrs. Edward J. Buckley
Mr. and Mrs. F. Neil Buckley
Mrs. Edna W. Buckwalter
Mrs. William J. Bultmann

Mrs. Robert B. Burroughs
Mrs. Arthur B. Cahill
Mr. Lewis Callaghan
Dolores Calles
Dr. William Otis Calloway
Mr. George T. Cameron
Major C. J. Carey
Mr. Russell Carpenter
Mrs. N. Casenave
Mrs. John Casserly
Mrs. A. L. Chickering
Mr. Drew Chidester
Madame Clara
Mrs. Tobin Clark
Mr. R. A. Cleaveland
Mr. Newton Booth Coghlin
Mr. John P. Coghlan
Mrs. John P. Coghlan
Mrs. John P. Coghlan, Jr.
Mrs. Betty Cohn
Mrs. Max Cohn
Mrs. Colbert Coldwell
Miss Persis H. Coleman
Mr. and Mrs. Waldo S. Coleman
Mr. H. D. Collier
Mrs. Jesse C. Colman
Mr. Joseph J. Coney
Miss Mary R. Conlin
Mrs. W. B. Cope
Mrs. B. Hardin Corbin
Dr. and Mrs. Frederick C. Cordes
Miss Mary Cowerd
Miss Mona Crellin
Mr. Templeton Crocker
Mr. William W. Crocker
Judge George E. Crothers
Mrs. John D. Crummey
Mrs. Emile F. Cuenin
Mrs. Leon Cuenin
Miss Peggy Cunningham
Miss Martha Curtis
Mr. and Mrs. O. K. Cushing
Mrs. Walter R. Cusick
Mrs. Chester Dahl
Mrs. Marie Hicks Davidson
Miss Florence Dean
Mrs. Charles J. Deering
Mrs. Frank P. Deering
Mrs. Georges deLatour
Mrs. S. T. DeLee
Mrs. Arthur J. DeLormier
Mr. Frank H. Denman
Mr. and Mrs. John Michael Desch
Mrs. Donald Dickey
Mrs. B. J. Dietrich
Mrs. Lloyd W. Dinkelspiel
Mrs. Samuel W. Dinkelspiel
Mr. and Mrs. Dewey Donnell
Miss Katharine Donohoe
Mrs. Warrington Dorst
Mrs. Paul M. Downing
Mrs. Frank B. Dray
Mrs. H. B. Drescher
Mrs. Lambert Dunbar
Mrs. Charles Dunpy
Mrs. Dunn Dutton
Mrs. Charles R. Eaton
Dr. Muriel E. Edwards
Mr. C. Wesley Edwards
Mr. Philip Ehrlich
Mrs. Alfred Ehrman
Mrs. Sidney Ehrman
Miss Lucile Eising
Mrs. Milton H. Esberg
Miss Marian W. Ewes
Mrs. Harold E. Faber
Mr. Lionel B. Feigenbaum
Mrs. Walter Filer
Mrs. Marshall Fisher
Mrs. R. M. Fitzgerald

Mrs. William M. Fitzhugh
Mr. Charles Flammer
Mrs. Herbert Fleishacker, Jr.
Mrs. Mortimer Fleishacker, Jr.
Mrs. James L. Flood
Mrs. B. C. Flood
Mrs. John F. Forbes
Mrs. Bernard W. Ford
Mr. and Mrs. Edward T. Ford
Mrs. W. Parmer Fuller, Jr.
Mrs. W. Parmer Fuller III
Mrs. Reed Funsten
Mr. Angelo Fusco
Mrs. Nellie Gaffney
Mrs. Vallejo Gantner
Mrs. Alfred Ghirardelli
Mr. D. Lyle Ghirardelli
Dr. and Mrs. Thomas A. Gibson
Miss Amelie Gier
Mrs. Frank Girard
Dr. Frank Girard
Mrs. Harry F. Gittings, Jr.
Mrs. J. H. Glide
Mrs. Henry Goldstein
Miss Lutie Goldstein
Mrs. A. H. Goldstone
Mr. Jack Gomperts
Miss Jane Goodfellow
Miss Lorraine C. Goodman
Mrs. Joseph Grace
Mrs. James Graham
Mrs. Joseph D. Grant
Mrs. Spencer Grant
Mrs. Horace Gray
Mr. and Mrs. Stuart N. Greenberg
Mrs. Frederick L. Greenlee
Mrs. Berthold Guggenheim
Mrs. Gustav Gumpel
Mrs. Morgan A. Gunst
Miss Rhoda Haas
Mrs. Walter A. Haas
Mrs. Walter A. Haas, Jr.
Miss Ethel Hager
Mrs. Randolph Hale
Mr. R. B. Hale
Mrs. William L. Halfpenny
Mrs. John Lindsay Hanna
Mrs. Richard J. Hanna
Mrs. Robert D. Harden
Mrs. L. W. Harris
Mrs. Russell Hastings
Mrs. Eulystus Lyon Hayes
Mrs. Timothy Hayes
Mr. A. W. Hazen
Mrs. Richard Heimann
Mrs. E. S. Heller
Mr. Walter D. Heller
Mr. Walter S. Heller
Mrs. Frederick Hellman
Mrs. I. W. Hellman
Mrs. Barbara Urba Hendel
Mrs. Wellington S. Henderson
Mrs. A. W. Hewlett
Mr. Benjamin H. Hicklin
Miss Ann Hill
Mrs. Fentress Hill
Mrs. Harold Hill
Mrs. Harry Hill
Mrs. Stanley Hiller
Mr. and Mrs. Harry H. Hilp
Mrs. A. F. Hockenbeamer
Mrs. Clifford P. Hoffman
Mrs. Osgood Hooker
Mrs. Robert Hotle
Mrs. Thomas Carr Howe, Jr.
Miss Mina B. Hughes
Mrs. Thomas R. Hughes
Miss Betty V. Humphreys
Mrs. T. B. Hunter
Marian P. Huntington

OPERA GUILD MEMBERS—Continued

Mrs. John Power Hutchins
 Mrs. James Irvine
 Mrs. James Jackman
 Dr. S. Nicholas Jacobs
 Mr. R. J. Jansen
 Mr. Harold I. Johnson
 Mrs. Otis Johnson
 Mrs. Walter S. Johnson
 Mrs. Ivar Johnson
 Mrs. Clarence Loran Johnston
 Dr. Herbert G. Johnstone
 Mrs. Elizabeth Jongeneel
 Mrs. Henry Keator
 Mr. Ben C. Keator
 Mrs. Charles J. Keenan
 Mrs. Edward D. Keil
 Mrs. T. Henshaw Kelly
 Mr. Charles Kendrick
 Mrs. Easton Kent
 Mrs. Donald Kieffer
 Mrs. Henry S. Kiersted
 Mrs. W. K. Kilpatrick
 Mr. Percy L. King
 Mr. A. J. Kirkpatrick
 Mrs. J. R. Kleinjung
 Mrs. John B. Knox
 Miss Caroline Korbelt
 Mrs. Abraham Koshland
 Mrs. Daniel Koshland
 Mrs. Marcus S. Koshland
 Miss Frances Kosta
 Mr. Frederick J. Koster
 Mr. Gus Kroesen
 Mrs. H. N. Kuechler, Jr.
 Esther Kuenz
 Mrs. Breck Lamont
 Mrs. Albert George Lang
 Mrs. Philip V. H. Lansdale
 Honorable and Mrs. Roger D.
 Lapham
 Mrs. Roger D. Lapham, Jr.
 Mrs. Charles G. Lathrop
 Mrs. T. M. Lauridsen
 Mrs. Claude Lazard
 Miss Rena Lazelle
 Mrs. A. Lendle
 Mrs. Louis Lengfeld
 Mr. Felix A. Lenhart
 Mrs. John A. Lesoine
 Miss Elvira LeStrange
 Mrs. Azro N. Lewis
 Mrs. Sidney Liebes
 Frances Marie Lilienthal
 Mr. Philip N. Lilienthal, Jr.
 Mr. F. L. Lipman
 Mr. R. L. Litchfield
 Miss Edith Livermore
 Mrs. Norman Livermore
 Mr. Carl Livingston
 Mr. and Mrs. James K. Lochead
 Mrs. Dan E. London
 Miss Ann M. Lovejoy
 Miss Louise Lovell
 Mrs. W. Palmer Lucas
 Miss Myrtle Lugg
 Mrs. Thomas P. Mailliard
 Mrs. Decker McAllister
 Mrs. Atholl McBean
 Mrs. T. R. McCarron
 Mr. A. M. Carty
 Mrs. W. H. McCormick
 Mrs. John McGaw
 Mrs. D. E. McLaughlin
 Mrs. George P. McNear
 Mrs. Errol MacBoyle
 Mr. and Mrs. Grover A. Magnin
 Dr. Ergo A. Majors
 Mrs. Vivian Mann
 Mrs. Randolph W. Martenet
 Mrs. Charles O. Martin
 Mrs. Water Martin
 Mrs. Charles Mayer
 Miss Evelyn Mendesolle
 Mrs. William G. Merchant
 Mrs. R. P. Merillion
 Mr. and Mrs. Gaetano Merola
 Mrs. H. C. Merritt, Jr.
 Mrs. John B. Metcalf
 Mrs. Julian J. Meyer
 Mrs. Robbins Milbank
 Mr. C. O. G. Miller
 Mrs. Harry East Miller
 Mrs. Earl D. Minton
 Pvt. Franklin Mittau
 Mr. Edward F. Moffatt
 Mr. J. K. Moffitt
 Mrs. E. R. Mogel
 Mrs. L. Mogel
 Mrs. Kenneth Monteagle
 Mr. Kenneth Monteagle
 Mr. and Mrs. Paige Monteagle
 Mr. Frederick H. Montgomery
 Mr. George Montgomery
 Mr. Charles Moore
 Mrs. Joseph A. Moore
 Mrs. Ramsay Moran
 Mrs. James W. Morgan
 Dr. Grace McCann Morley
 Mrs. Philip C. Morse
 Miss Alicia Mosgrove
 Dr. W. H. Murphy
 Miss Laura Musto
 Mrs. A. N. Nathan
 National Broadcasting Co.
 Mrs. Hans Nelson
 Miss Julia M. Neppert
 Mrs. John Archibald Newcomb
 Mr. John Francis Neylan
 Mr. J. LeRoy Nickel, Jr.
 Mrs. William H. Noble
 Mrs. William H. Nolan
 Miss Anna C. O'Brien
 Mrs. Mary Obujen
 Mrs. Jack Okell
 Miss Margaret Olcese
 Mr. Benjamin J. Older
 Mrs. A. Leslie Oliver
 Mrs. Warren Olney, Jr.
 Mrs. Julius Oppenheimer
 Mrs. William H. Orrick
 Mr. Charles R. Page
 Lorraine Parison
 Miss Barbara Parrott
 Mr. Philip P. Paschel
 Mrs. Oscar Butler Perry
 Mrs. Herman Phleger
 Mr. and Mrs. G. Pisani
 Mr. Aram Poladian
 Mrs. Wesley A. Pomeroy
 Mrs. George A. Pope, Jr.
 Mrs. Kenneth Pope
 Mrs. Hugh B. Porter
 Mrs. M. C. Porter
 Mrs. Ashton Potter
 Mr. J. Sheldon Potter
 Miss Eva Powell
 Mrs. Jerome V. Powell
 Mrs. Stanley Powell
 Mr. and Mrs. Stanley Powell, Jr.
 Mr. Walter G. Preddy
 Mrs. John Raggio
 Dr. Ralph Arthur Reynolds
 Mrs. H. A. Richardson

ON THE RECORD

THE MUSIC YOU LOVE TO HEAR
 YOUR FAVORITE OPERA, SYMPHONY
 AND POPULAR NEW RELEASES

BALDWIN PIANO CO.

Record Department

310 Sutter Street

Sutter 8500

PENINSULA BOX OFFICE

"Choice seats for all attractions"

338 University Ave.
Palo Alto 22122

Ben Franklin Hotel
San Mateo 43348

1454 Burlingame Ave.
Burlingame 31232

OPERA GUILD MEMBERS—Continued

Miss Gertrude Richter	Mrs. Rose Silver	Mr. Ernest J. Torregano
Miss Margarete Riegg	Mr. R. O. Simon	Miss Anna O. Touvinen
Mrs. Walter Riegger	Mr. Charles W. Slack	Mrs. James W. Towne
Mrs. James W. Roberts	Mrs. Leon Sloss, Jr.	Dr. and Mrs. Harold Trimble
Mrs. John T. Roberts	Mrs. Leon Sloss	Mrs. Henri W. Trumbull
Mr. and Mrs. Hall Roe	Mrs. Louis Sloss	Mrs. Alfred S. Tubbs
Mrs. Nathan Rogers	Judge and Mrs. M. C. Sloss	Mrs. Nion Tucker
Mrs. Arline Miller Rolkin	Mrs. George D. Smith	Mrs. John R. Upton
Mr. Robert A. Roos	Mrs. Josephine A. Smith	Mrs. Sidney M. Van Wyck
Mr. John N. Rosekrans	Mrs. Melville L. Smith	Mr. and Mrs. Reginald L. Vaughan
Mrs. Charles W. Rosenbaum	Mrs. Russel Smith	Mr. Paul Verdier
Mrs. Angela Wing Roth	Captain G. W. Somers	Mrs. Walter Vojon
Mrs. William P. Roth	Soroptomist Club	Dr. C. E. Voigt
Mrs. Dorothy Royce	Mrs. Robert Gordon Sproul	Mrs. Daniel Volkmann
Mr. F. W. Rubke	Mrs. E. B. Stanwood	Mrs. Norman Waggoner
Mrs. Henry Potter Russell	Miss Gynne Stern	Mr. George Wagner
Miss Pauline E. Ryder	Mrs. Sigmund Stern	Mrs. Richard Walker
Miss Virginia Ryder	Mrs. Lawrence Strassburger	Mrs. Ward Walkup
Mr. Marcus L. Samuels	Mr. and Mrs. Jerd Sullivan	Mr. Morton Wallace
Mrs. Karl Schaefer	Mrs. Alfred Sutro	Mrs. Clarence R. Walter
Mr. and Mrs. Carl Schaubye	Mrs. John A. Sutro	Mrs. John I. Walter
Mrs. Rudolph Schilling	Mrs. Oscar Sutro	Mrs. Lingan Warren
Mr. George B. Schirmer	Mrs. Oscar Sutro, Jr.	Mrs. Michel D. Weill
Mr. Nat Schmulowitz	Mr. Louis Sutter	Mrs. Dorothy Weiss
Miss Violet G. Schoning	Mr. Henry F. Swift	Mrs. Millard C. White
Mr. Albert Schwabacher	Mrs. Alfred B. Swinerton	Mrs. Frederick C. Whitman
Mr. James H. Schwabacher	Mrs. Powers Symington	Mrs. F. A. Wickett
Mrs. Louis A. Schwabacher	Mrs. Andrew Talbot	Mrs. Brayton Wilbur
Mrs. Bert C. Scott	Miss June Tanzer	Mr. Stephen Williams
Mr. H. S. Scott	Mrs. David Armstrong Taylor	Mrs. W. F. Wilmette
Mr. Walter Sedgley	Mr. George C. Thierbach	Mrs. Dean Witter
Mr. and Mrs. Bruce Selfridge	Mrs. F. F. Thomas, Jr.	Dr. Dorothy A. Wood
Mrs. Richard H. Shainwald	Mrs. Myron J. Thomas	Dr. Theodore Wores
Mrs. R. S. Shainwald	Mrs. Miller Thomlinson	Miss Barbara Young
Mrs. Nelson Towne Shaw	Barbara B. Thompson	Mrs. Clarence Young
Mrs. A. H. Shearer	Mrs. Julian Thorne	Mrs. V. Zaruba
Mrs. Fred R. Sherman	Mr. W. G. Thornton	Mrs. Harold I. Zellerbach
Mrs. Francis Shook	Miss Ida Thrans	Mr. J. D. Zellerbach
Mrs. Henry J. Siegler	Mrs. M. C. Threlkeld	Mr. Edgar T. Zook
Mrs. Stauffer Sigall	Mrs. Joseph Tobin	
	Mrs. Edward Topham, Jr.	

FIRE NOTICE

There are sufficient exits in this building to accommodate the entire audience. The exit indicated by the lighted "Exit" sign nearest your seat is the shortest route to the street. In case of fire please do not run—**Walk through that exit.**

For extraordinary performance, magnificent musical tone and authentic cabinet design, remember this name when you buy your new radio-phonograph with FM.

Freed-Oisemann
"One of the world's great radio-phonographs"

FREED RADIO CORPORATION • NEW YORK, N. Y.

discoveries in beauty from the noteworthy H G White collection of exclusive giftware & antiques



The London Shop

352 SUTTER ST • SAN FRANCISCO • TELEPHONE EXBROOK 2408

CONTRIBUTORS TO 1945 SEASON

<p>Amberg-Hirth Anglo California National Bank Constant J. Auger Baldwin Piano Co. Blum's Borden's Dairy Delivery Co. Bullock & Jones Co. City of Paris City Transfer & Storage Co. Columbia Concerts Inc. Davis-Schonwasser The Emporium Julius Eppstein Florists Fairmont Hotel Fox West Coast Agency Nelly Gaffney Granat Bros.</p>	<p>S. & G. Gump Company Hale Bros. Hastings Clothing Co. Joseph's Florist Juliettes KGO American Broadcasting Co. Inc. Carolyn Kelsey K. H. Lengfeld H. Liebes & Company Livingston Bros. Mr. and Mrs. Grover A. Magnin I. Magnin & Company Joseph Magnin Company Maison Mendessolle Mark Hopkins Hotel Merrill's Drug Centers</p>	<p>Musicians Union, Local No. 6 O'Connor, Moffatt & Co. Palace Hotel Pisani Printing & Publishing Co. Edward K. Pond Ransohoffs Roos Bros. Schneider Bros. Inc. Sherman, Clay & Co. Shreve & Co. Sommer & Kaufmann Standard of California St. Francis Hotel Weinstein Co. Inc. White House Williams & Berg Co. Yellow Cab Company</p>
--	--	---

GIFTS *that say "I'm thinking of YOU"*

California flowers . . . exquisitely reproduced in hand made ceramic pin and earring sets . . . Hand blocked smocks for house and Victory Garden wear . . . Good luck Pixies . . . Unusual, worthwhile gifts.

THE NATALIE SHOP

12 TILLMAN PLACE
Bet. Sutter & Post Sts.
Off Grant Avenue . . .
Phone: DOuglas 1502

STEWART BURRWELL BRADY

Scholarship Pupil of DINO BORGIOLO, London, England
Vocal Psychiatrist

644 Powell Street, San Francisco

Telephone DOuglas 0556

ELIZABETH WILLS

Voice Building — Coaching

Teacher of
Florence Alba

San Francisco

Studio—701 Pine Street
Telephone—SUTter 1584

ALITA ARRICK

TEACHER OF PIANO
CLASSICAL COURSE

Pupils Prepared for Recitals,
Vocal Coaching and
Accompanying

163 Sutter Street EXbrook 4652
San Francisco 4, Calif.

STELLA SPRAGUE BEST VOICE

Italian Method • Bel Canto

Pupils prepared for Grand Opera and Concert
2845 Van Ness Ave. GRaystone 2786

CITY TRANSFER CO.

SERVES SAN FRANCISCO OPERA CO.

WHY NOT YOU?

MOVING - STORAGE - SHIPPING

333 TURK STREET PRospect 3060

HANCOCK BROS.

ROLL AND RESERVED SEAT TICKETS

★

25 JESSIE STREET DOuglas 2191
San Francisco 5, California

**Can this service
help me?**

Many a man, engrossed in his business or profession, has found a Trust Account with his bank helpful.

Under such an arrangement, the bank takes over and handles for its client the many time-consuming details of his *personal* investments. *Ask about this service.*

TRUST DEPARTMENT

Wells Fargo
Bank & UNION TRUST CO.

SAN FRANCISCO

Established 1852

Member F. D. I. C.

97
105
100
CFC-C-5-8-OK
F H H
93 24

a Perfect Evening

Start with Chesterfields and you can add only orchids and the theatre for a perfect evening. Chesterfield's Right Combination World's *Best* Tobaccos always gives you smoking pleasure at its best. Chesterfields satisfy because they're *milder... cooler... better-tasting.*

CHESTERFIELD
RIGHT COMBINATION WORLD'S BEST TOBACCOS