

Les Contes d'Hoffmann

1945

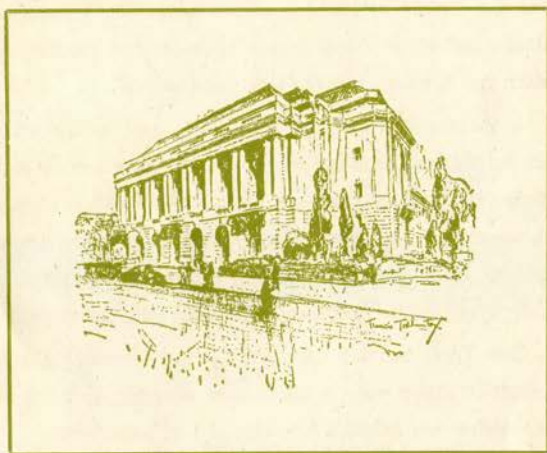
Thursday, October 4, 1945 8:15 PM

SFO_PUB_01_SFO_1945_07

Publications Collection

San Francisco Opera Archives

Twenty-third Annual Season
San Francisco Opera Association
Gaetano Merola General Director



War Memorial Opera House
September 25 to October 27

1945

An Invitation

TO THE WOMAN OF AFFAIRS

To every woman, her security is precious—a necessity. But the details of looking after the stocks, bonds, real estate, and other assets which provide that security are often too burdensome for any one person.

A woman can simplify her affairs, and better secure her future, just as many busy men do, by letting financial specialists shoulder part, or all, of this burden of asset management—buying, selling, exchanging, redeeming securities; leasing, repairing, insuring property; computing and paying taxes—problems ever changing, never ending.

Our Trust Service can protect and preserve her interests in many ways—advising, managing, carrying out her wishes with skilled knowledge and experience.

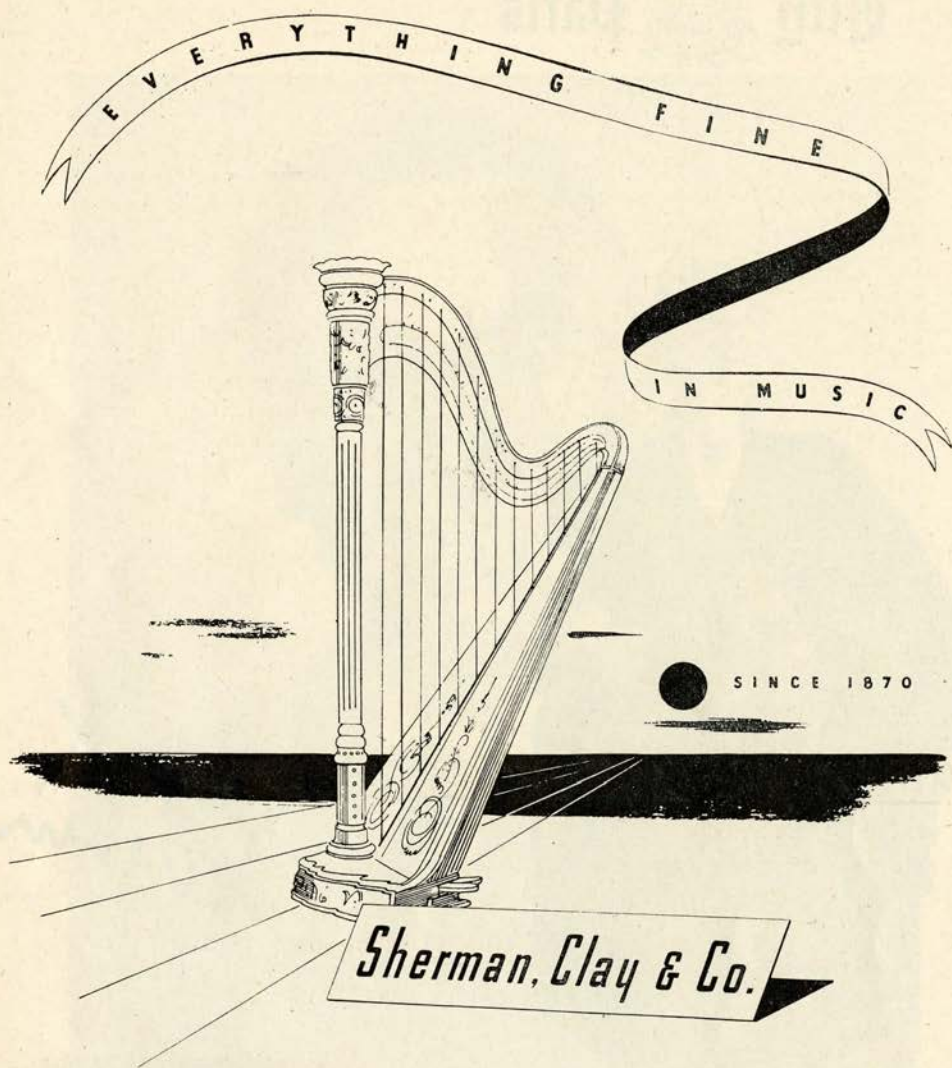
Have a chat with one of our Trust Officers. There will be no obligation.

TRUST DEPARTMENT

1 Sansome Street • San Francisco

20 other California offices





• Most all famous names in the world of music are exclusive with Sherman, Clay: the immortal Steinway, Chickering, and other fine pianos; the Hammond organ; the Capehart; Conn, Gibson and other fine band and orchestra instruments. Now, as it has been for 75 years, music lovers look to Sherman, Clay for everything fine in music.

SHERMAN, CLAY'S 8 PACIFIC COAST STORES ARE LOCATED IN
SAN FRANCISCO • OAKLAND • SAN JOSE • SACRAMENTO • FRESNO • PORTLAND • SEATTLE

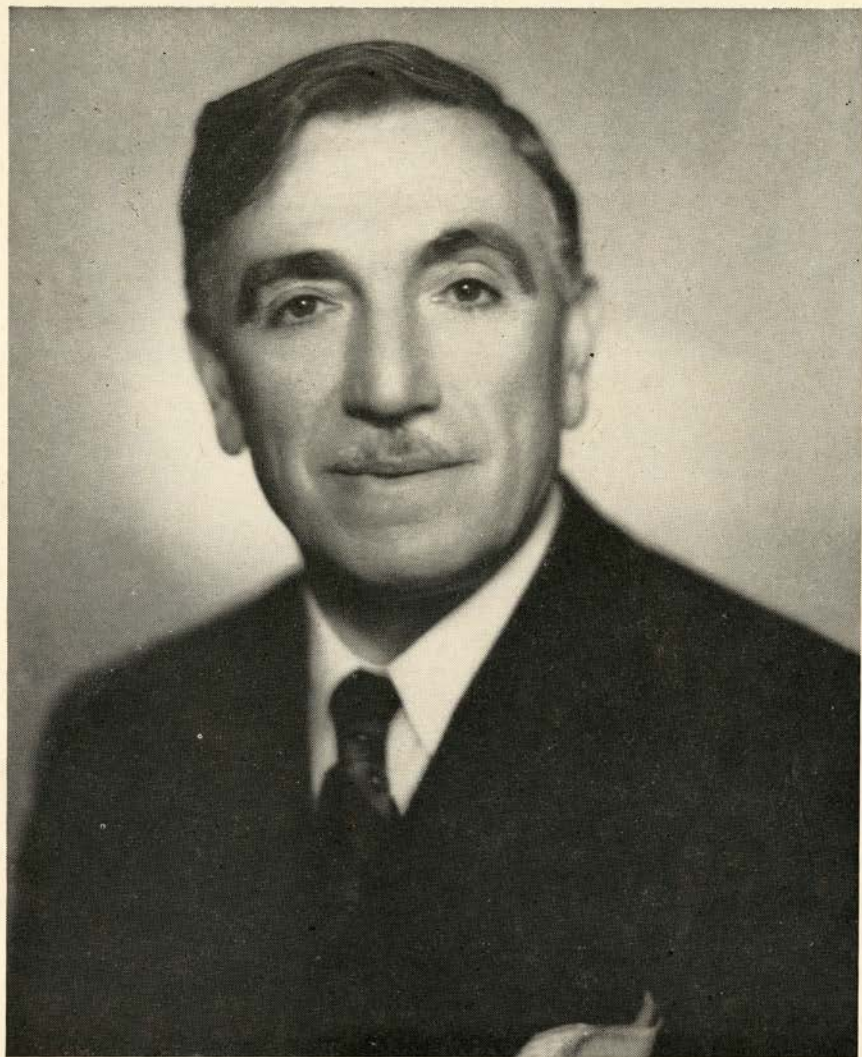
City  Paris



Christian

**Sinuous ripple of fringe . . .
inspired magnificence on
a sculptured black sheath
and dramatic cape.**

The Gown Salon, Third Floor



G A E T A N O M E R O L A


G E N E R A L

D I R E C T O R

S A N F R A N C I S C O O P E R A C O M P A N Y

YOU'LL BE GLAD
YOU WAITED FOR

Kirk



... because sterling by Kirk, America's oldest silversmiths, has been a treasured possession in American homes for over a century... cherished for its superb weight, finish and proportion. Although we may not have unlimited quantities of Repousse and other inimitable Kirk patterns on hand at all times you may be sure that your order will be filled as rapidly as possible.

Granat Bros
SHREVE TREAT & EACRET

EXCLUSIVE AGENT FOR KIRK SILVER
IN NORTHERN CALIFORNIA

SAN FRANCISCO OPERA ASSOCIATION



OFFICERS

KENNETH MONTEAGLE
PRESIDENT

MRS. STANLEY POWELL
VICE-PRESIDENT

ARTHUR MERRILL BROWN, JR.
VICE-PRESIDENT

CHARLES R. BLYTH
VICE-PRESIDENT

GEORGE T. CAMERON
TREASURER

EDWARD F. MOFFATT
SECRETARY

BOARD OF DIRECTORS

GEORGE WASHINGTON BAKER, JR.
CHARLES R. BLYTH
ARTHUR MERRILL BROWN, JR.
GEORGE T. CAMERON
WILLIAM W. CROCKER
MORTIMER FLEISHHACKER

TIMOTHY HEALY
KENNETH MONTEAGLE
JOHN FRANCIS NEYLAN
MRS. STANLEY POWELL
MRS. HENRY POTTER RUSSELL
NIDN R. TUCKER

EXECUTIVE STAFF

PAUL POSZ
BUSINESS MANAGER

CURRAN SWINT, PUBLICITY DIRECTOR

ARTHUR FRAHM-LALIA DECKER
KATHLEEN LAWLOR
TICKET SALES

EVELYN CROCKETT-GERALD G. ROSS
PHYLLIS AMATI
OFFICE SECRETARIES

VETERANS OF WORLD WAR II!

If you are interested in a Home Loan

*... whether a: **GI Loan***

an

FHA Loan

or a

Bank Loan

*call at any of our
seven offices*



INCORPORATED FEBRUARY 10, 1868

THE SAN FRANCISCO BANK

Savings

Member Federal Deposit Insurance Corporation

Trust

526 California Street, San Francisco

Mission and Twenty-first Streets
Clement Street and Seventh Avenue
1528 Fillmore Street

Haight and Belvedere Streets
West Portal Avenue and Ulloa Street
1435 Burlingame Avenue, Burlingame

PARKER S. MADDUX, *President*

BOARD OF GOVERNORS

GEORGE WASHINGTON BAKER, JR.	REUBEN B. HALE	MRS. JOHN FRANCIS NEYLAN
P. A. BERGERDT	MRS. LAWRENCE W. HARRIS	JOHN FRANCIS NEYLAN
CHARLES R. BLYTH	J. EMMET HAYDEN	ETTORE PATRIZI
J. BRENDAN BRADY	TIMOTHY HEALY	RALPH L. PHELPS
H. SEWALL BRADLEY	EDWARD D. KEIL	MRS. M. C. PORTER
ARTHUR MERRILL BROWN, JR.	CHARLES H. KENDRICK	MRS. STANLEY POWELL
GUIDO CAGLIERI	MRS. MARCUS S. KOSHLAND	STANLEY POWELL
MRS. GEORGE T. CAMERON	LEWIS A. LAPHAM	ANGELO J. ROSSI
GEORGE T. CAMERON	MRS. STINE LEIS	MRS. HENRY POTTER RUSSELL
CHARLES A. CHRISTIN	J. B. LEVISON	A. SBARBORD
TEMPLETON CROCKER	MISS EDITH LIVERMORE	FRED R. SHERMAN
WILLIAM W. CROCKER	M. E. LOMBARDI	PAUL SHOUP
GEORGE E. CROTHERS	MISS RUTH W. LORING	MRS. M. C. SLOSS
MRS. FRANK P. DEERING	MISS SALLIE MAYNARD	RALPH J. A. STERN
MISS MARY C. DUNHAM	WILLIAM GLADSTONE MERCHANT	MRS. SIGMUND STERN
SIDNEY M. EHRMAN	MRS. C. O. G. MILLER	MRS. DAVID ARMSTRONG TAYLOR
MRS. WILLIAM M. FITZHUGH	ROBERT W. MILLER	M. C. THRELKELD
MORTIMER FLEISHHACKER	EDWARD F. MOFFATT	NIDN R. TUCKER
A. P. GIANNINI	KENNETH MONTEAGLE	RANDOLPH C. WALKER
RANDOLPH HALE	GUIDO MUSTO	WHITNEY WARREN, JR.



WAR MEMORIAL OPERA HOUSE

(OWNED AND OPERATED BY THE CITY AND COUNTY OF SAN FRANCISCO
THROUGH THE BOARD OF TRUSTEES OF THE WAR MEMORIAL)

BOARD OF TRUSTEES

CHARLES B. KLEUPFER PRESIDENT	GUIDO J. MUSTO VICE-PRESIDENT	WALTER A. LEONETTI
SIDNEY M. EHRMAN	WILBUR A. HENDERSON	RICHARD H. NEWHALL
ALVIN GERLACK	DAN S. HEWITT	RALPH J. A. STERN
D. LYLE GHIRARDELLI	J. BRUCE JONES	

EDWARD SHARKEY
MANAGING DIRECTOR OF
THE WAR MEMORIAL

IRA G. THOMPSON
SECRETARY TO THE BOARD
OF TRUSTEES

Buffet Service in Basement Promenade and Dress Circle during all performances

LIBRETTOS AND OPERA GLASSES IN FOYER . HEAD SETS FOR THE DEAF ARE
AVAILABLE AT TABLE IN MAIN FOYER . ATTENDANT WILL CONNECT
WITH SEAT LOCATION UPON REQUEST . FOR LOST AND FOUND
INFORMATION, INQUIRE AT CHECK ROOM NO. 1

WILLIAM A. MEADE, DIRECTOR OF HOUSE SERVICE



*Over a
Century of furnishing
America's Homes*

W & J **SLOANE**

216 SUTTER near GRANT



SAN FRANCISCO 8, CALIF.

SAN FRANCISCO OPERA COMPANY

GAETANO MEROLA

GENERAL DIRECTOR

PAUL POSZ
BUSINESS MANAGER

ARMANDO AGNINI
STAGE AND TECHNICAL DIRECTOR

KURT HERBERT ADLER
CHORUS DIRECTOR

HERBERT GRAF
STAGE DIRECTOR

JESSIE KEENE
SECRETARY

ETIENNE BARONE
STAGE MANAGER

WILLIAM CHRISTENSEN
BALLET MASTER



CONDUCTORS and ASSISTANTS

GAETANO MEROLA

WILLIAM STEINBERG

GEORGE SEBASTIAN

PIETRO CIMARA

KARL RIEDEL

OTELLO CIRONI

KURT HERBERT ADLER

KARL KRITZ

ANTONIO DELL'OREFIDE

NAOUM BLINDER
CONCERT MASTER

JULIUS HAUG
PERSONNEL MANAGER

ARTISTS

LICIA ALBANESE
SOPRANO

EVARISTO ALIBERTINI
BARITONE

LORENZO ALVARY
BASS

BRITTA ANDERSON
CONTRALTO

SALVATORE BACCALONI
BASS

BIANCA BRUNI
SOPRANO

LORRAINE CALCAGNO
CONTRALTO

LEILA CAMBI
SOPRANO

FRANCES CASTELLANI
SOPRANO

GEORGE CEHANOVSKY
BARITONE

NADINE CONNER
SOPRANO

EVELYNN CORVELLO
SOPRANO

VIVIAN DELLA CHIESA
SOPRANO

MURIEL DEMERS
SOPRANO

ALESSIO DE PAOLIS
TENOR

LILY DJANEL
SOPRANO

LED GALT
BARITONE

JOHN GARRIS
TENOR

HERTA GLAZ
CONTRALTO

CHARLES GOODWIN
BASS

PAUL GUENTER
BARITONE

MACK HARRELL
BARITONE

MARGARET HARSHAW
CONTRALTO

ELMA HEITMAN
SOPRANO

ROSE AGNES HERSCH
CONTRALTO

MARY BELLE JACOBS
SOPRANO

FREDERICK JAGEL
TENOR

HERBERT JANSSEN
BARITONE

RAOUL JOBIN
TENOR

MARILYNN KING
SOPRANO

CHARLES KULLMAN
TENOR

BRUNO LANDI
TENOR

KATHLEEN LAWLOR
SOPRANO

LOTTE LEHMANN
SOPRANO

PAUL LEIBER
TENOR

MAX LORENZINI
BARITONE

AUGUSTO LORENZO
BARITONE

ROBERT BRUCE MACKAY
BASS

BENJAMIN MARTIN
BARITONE

LAURITZ MELCHIOR
TENOR

ROBERT MILLS
BARITONE

ROBIN NELSON
BARITONE

HERBERT NYSTROM
TENOR

WALTER DLITZKI
BARITONE

JAN PEERCE
TENOR

IVAN PETROFF
BARITONE

EZIO PINZA
BASS

LILY PONS
SOPRANO

HILDE REGGIANI
SOPRANO

ANITA RAGUSA
SOPRANO

STELLA ROMAN
SOPRANO

W. VERNON SANDERS
BASS

BETTIE SANDERSON
SOPRANO

ELEANOR STEBER
SOPRANO

RISE STEVENS
SOPRANO

GEORGE TALLONE
TENOR

JOSEPH TISSIER
TENOR

HELEN TRUBEL
SOPRANO

CLARAMAE TURNER
CONTRALTO

FRANCESCO VALENTINO
BARITONE

THELMA VOTIPKA
SOPRANO

FREDERIC WILLIAMS
TENOR

The World's Greatest Artists

are on

VICTOR RECORDS



You can have command performances of Grand Opera in your home, through the medium of Victor Records. You will find the world's greatest artists in Victor's great Catalog of Music.

THE MUSIC AMERICA LOVES BEST!



CONSULT THESE VICTOR DEALERS FOR
YOUR VICTOR RECORD REQUIREMENTS

<p>CITY OF PARIS Douglas 4500 Paul Verdier, Pres. <i>Radios - Records</i> Normandy Lane</p>	<p>MUSIC CENTER <i>San Francisco's Newest Record Shop</i> 40 POWELL STREET <i>Open Evenings till 9 p.m.</i></p>	<p>THE WHITE HOUSE Raphael Weill & Company <i>Radio-Record Shop</i> Fourth Floor</p>
<p>THE EMPORIUM <i>San Francisco's Shopping Center</i> 835 MARKET STREET</p>	<p>O'CONNOR MOFFATT and Company <i>Stockton at O'Farrell Utter 1800</i></p>	<p>THE RECORD SHOP 14 Tillman Place San Francisco 8, California Off Grant Ave. bet. Post and Sutter Phone EXbrook 2383 <i>"The Best in Recorded Music"</i></p>

C H O R A L E N S E M B L E

MISSES

BRITTA ANDERSON
LUCY ARMAGANIAN
VIOLET AURAND
EILEEN BROWNE
BIANCA BRUNI
LORRAINE CALCAGNO
LELIA CAMBI
ELIZABETH CASE
GRACE COLTRONE
ELEANOR CORYELL
MURIEL DEMERS
SONYA FREED
BARBARA FRITZ
EMILY GRIGSBY
THORA HARPER

ELMA HEITMAN
ROSE AGNES HERSCH
ORTHELLA HUGHES
MARY BELLE JACOBS
RHEA KESSLER
MARILYNN KING
LUCILE KIRTLEY
SYBIL LOUISE KNAPP
KATHLEEN LAWLOR
NEVART LEVON
DOROTHY MCINTYRE
DELPHIA PHILLIPS
BETTIE SANDERSON
VERA SOLAX

DORA DI TANO, ACCOMPANIST

MESSRS.

EVARISTO ALIBERTINI
ALBERT BARRETT
HARRY BATHGATE
FRED BEARDSLEY
ALTON BERNHARD
LOUIS BRAUNSTEIN
JOHN CRONIN
GALLIANO DANELUZ
FLOYD DAVIS
LORENZO DE BEAL
AMERIGO DEL GRANDE
ARTHUR DE MASI
PHIL DOAN
LEO GALT
WILLIAM GORMAN
PAUL GUENTER
E. ERICH LAWRENCE
PAUL LEIBER

MAX LORENZINI
AUGUSTO LOURENZO
ROBERT BRUCE MACKAY
GIULIO MANCINI
BENJAMIN MARTIN
CARLO MENNUCCI
ROBIN NELSON
WILLIAM PETERSEN
W. VERNON SANDERS
BRUCE LINWOOD
STEWART
GEORGE TALLONE
ALBERTO VANNUCCI
EDWIN VANNUCCI
FRED WAHLIN
FREDERIC WILLIAMS
HERMAN WISEMAN

BALLET

RUBY ASQUITH, PRIMA BALLERINA

WILLAM CHRISTENSEN, CHOREOGRAPHER AND BALLET MASTER

SOLOISTS

MISSES
CELENA CUMMINGS
ROSALIE PROSCH
SALANO

MISSES
LOIS TREADWELL
JOCelyn VOLLMAR
ONNA WHITE

PRINCIPAL DANCERS

MISSES
BARBARA BADERTSCHER
BETTY CUNEO
MARCELLA DODGE
ANTOINETTE GUHLKE
JYMMI RIEDEL
SALLY WHALEN
WANA WILLIAMS

MESSRS.
ROBERT HANSEN
RUSSELL HARTLEY
FRANK NELSON
RALPH PATTERSON
JOAQUIN FELSCH
ROBERT THORSON

CORPS DE BALLET

MISSES
BENEVIEVE ASONOVICH
BONNY BELL
JANE BOWEN
VERA GOLD

MISSES
AUDREY GREENLEY
NANCY JACOBS
NANCY JOHNSON

MISSES
IRENE MANSFELDT
JUDY NATHANSON
MARCIANNE RAUB

MISSES
JANET SASSOON
JOAN VICKERS
CAROLINE WILLIAMS
SYLVIA WILLIAMS

PRODUCTION

EUGENE B. DUNKEL-FRITZ KRAENKE
SCENIC ARTISTS

EARL MCGUIRE
MASTER CARPENTER

CHARLES J. HOLZMUELLER
MASTER ELECTRICIAN

JOHN T. HEAVEY
MASTER OF PROPERTIES

FOR WAR MEMORIAL OPERA HOUSE

S. E. SIMMONS
MASTER CARPENTER

EDWARD J. ZETTEL
MASTER ELECTRICIAN

CLAUDE L. WAGGONER
MASTER OF PROPERTIES

COSTUMES AND WIGS BY GOLDSTEIN & CO.

ALEXANDER AGNINI
WARDROBE MASTER

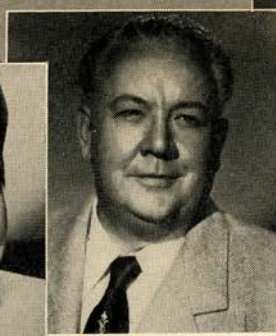
INEZ DODSON
WARDROBE MISTRESS

SUE MCGOWAN
HAIRDRESSER

EVERETT MASON
MAKEUP ARTIST

PROGRAM

PISANI PRINTING & PUBLISHING COMPANY, PUBLISHERS, DESIGNERS AND PRINTERS



- LILY PONS
- LAURITZ MELCHIOR
- LICIA ALBANESE
- RAOUL JOBIN
- HELEN TRAUBEL
- CHARLES KULLMAN
- STELLA ROMAN
- EZIO PINZA
- RISE STEVENS
- LORENZO ALVARY
- VIVIAN DELLA CHIESA

Artists of the San Francisco OPERA COMPANY

Beaulieu Vineyard

BV

WINES



BEAULIEU VINEYARD is a family estate . . . located in the lovely Napa Valley of Northern California. Today, as for nearly half a century, we take pride in the quality of our wines. Our 600 acres of vines grow wine grapes of the finest strains. Thus the yield is far lighter than that of grapes of lesser quality.

Our old-world-type of winery has a storage capacity equal to five times our yearly production — thus we have ample facilities to develop our inventory of fine wines in small cooperage until bottle-ripe, and to bin them afterwards.

As a consequence of our painstaking methods, production is limited and our wines are not available everywhere.

FIVE REPRESENTATIVE BEAULIEU VINEYARD WINES

GEORGES DE LATOUR PRIVATE RESERVE CABERNET: An eminent wine, made solely with Cabernet Sauvignon grapes.

BEAULIEU NAPA VALLEY MUSCAT DE FRONTIGNAN: This wine has been acclaimed by experts as the finest dessert wine produced in America. A wine for entertaining.

BEAUMONT: Made with the famous Pinot Noir grapes (original cuttings from Cote d'Or district of France).

BEAULAIR: One of the fine white wines of the Napa Valley. Made with Johannesberger Riesling grapes.

BEAUROSÉ. A light, agreeable vinrosé. To be served very chilled. The hostess wine for lunch.

Beaulieu Vineyard

FOUNDED AND OWNED CONTINUOUSLY BY THE DE LATOUR FAMILY SINCE 1900
Vineyards and Winery at Rutherford, Napa County, California



FREDERICK JAGEL

LILY DJANEL

JAN PEERCE

HERTA GLAZ

FRANCESCO VALENTINO

MARGARET HARSHAW

SALVATORE BACCALONI

LOTTE LEHMANN

IVAN PETROFF

ELEANOR STEBER

MACK HARRELL

Artists of the San Francisco OPERA COMPANY



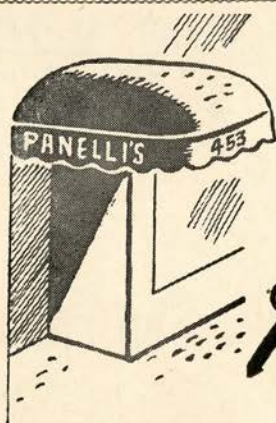


Simi Vineyard

FINE CALIFORNIA WINES

When entertaining, serve superb SIMI vintage table wines ... Burgundy, Cabernet, Carignan, Zinfandel, and Larose, Sauterne, Chablis ... matured with unhurried care from choicest Sonoma hillside grapes ... ask for SIMI ... pronounced See-Me ... at your dealer's.

PARROTT & CO. . . San Francisco . . Sole U. S. Distributors



The New

Panelli's

... a distinctive Restaurant glorifying delicious Italian Cuisine, featuring the Charcoal Broiler
Cocktails

453 PINE STREET Sutter 9937
SAN FRANCISCO, CALIFORNIA



HILDE REGGIANI

HERBERT JANSSEN

NADINE CONNER

BRUNO LANDI

THELMA VOTIPKA

GEORGE CEHANOVSKY

ANITA RAGUSA

ALESSIO DE PAOLIS

FRANCES CASTELLANI

WALTER OLITZKI

JOHN GARRIS

Artists of the San Francisco OPERA COMPANY



MUNICIPAL CONCERTS

1946

THE ART COMMISSION

Presents

SAN FRANCISCO SYMPHONY ORCHESTRA

JANUARY 11



ARTUR RUBINSTEIN

THE MASTER PIANIST
PIERRE MONTEUX, CONDUCTING

JANUARY 24

TO

FEBRUARY 3



RUSSIAN BALLET

BALLET THEATRE

10 SPECTACULAR PERFORMANCES
ALL WITH SAN FRANCISCO SYMPHONY

FEBRUARY 13



LEONARD BERNSTEIN

GUEST CONDUCTOR
JESUS MARIA SANROMA, PIANIST

FEBRUARY 28



LICIA ALBANESE

PRIMA DONNA, SAN FRANCISCO AND MET. OPERA CO.
ALL OPERA PROGRAM
GAETANO MEROLA, CONDUCTING

APRIL 6



JOSEPH SZIGETI

THE INCOMPARABLE VIOLINIST
PIERRE MONTEUX, CONDUCTING



FIVE STAR SEASON

Season Reservations Now!

*SIX EVENTS including opening night of Ballet Theatre and of any one other Ballet performance, also the four guest artist cc \$11.40, \$8.40, \$6.90, \$4.80, \$3.60, tax incl. BOX OFFICE, Sherman, Clay, S



ACME
..the beer with the
high I.Q. (It Quenches!)

ACME BREWERIES • San Francisco, Los Angeles



R E P E R T O I R E

REGULAR SERIES

- CARMEN (*Bizet*) Tuesday Night, September 25, at 8:00
 With Stevens, Steber, Votipka, Turner, Jobin, Harrell, Olitzki, De Paolis, Cehanovsky.
 MEROLA, Conductor
- LA BOHEME (*Puccini*) Friday Night, September 28, at 8:15
 With Albanese, Conner, Kullman, Valentino, Pinza, Cehanovsky, Baccaloni, Alibertini,
 Lorenzini, Messina. MEROLA, Conductor
- DER ROSENKAVALIER (*Richard Strauss*) Tuesday Night, October 2, at 8:00
 With Lehmann, Stevens, Steber, Glaz, Votipka, Alvary, Landi, Olitzki, De Paolis,
 Harrell, Garris, King, Cambi, Lawlor, Hersch, Sanderson, Tallone, Tissier, Goodwin,
 Leiber, Guenter, MacKay, Williams. SEBASTIAN, Conductor
- TRISTAN UND ISOLDE (*Wagner*) Friday Night October 5, at 8:00
 With Traubel, Glaz, Melchior, Janssen, Alvary, Olitzki, Garris, Goodwin.
 STEINBERG, Conductor
- DIE WALKURE (*Wagner*) Tuesday Night, October 9, at 8:00
 With Traubel, Djanel, Harshaw, Melchior, Janssen, Alvary, Votipka, Glaz, Ragusa,
 Demers, Anderson, Turner, Calcagno. STEINBERG, Conductor
- BORIS GODOUNOFF (*Moussorsky*) Friday Night, October 12, at 8:00
 With Pinza, Baccaloni, Jagel, Alvary, De Paolis, Cehanovsky, Garris, Della Chiesa,
 Harshaw, Glaz, Castellani, Turner, Mills, Nystrom, Tissier, Goodwin, Bruni, Calcagno,
 Leiber, Martin, Lourenzo. SEBASTIAN, Conductor
- DON GIOVANNI (*Mozart*) Tuesday Night, October 16, at 8:00
 With Pinza, Baccaloni, Landi, Alvary, Mills, Roman, Della Chiesa, Albanese.
 STEINBERG, Conductor
- LUCIA DI LAMMERMOOR (*Donizetti*) Friday Night, October 19, at 8:15
 With Pons, Votipka, Pearce, Alvary, Petroff, Garris, Nystrom. CIMARA, Conductor
- L'HEURE ESPAGNOLE (*Ravel*) Tuesday Night, October 23, at 8:00
 With Albanese, Harrell, Baccaloni, De Paolis, Garris. MEROLA, Conductor
 followed by
- SALOME (*Richard Strauss*)
 With Djanel, Harshaw, Glaz, Jagel, Janssen, Garris, Alvary, Cehanovsky, De Paolis,
 Heitman, Nelson, Mills, Tallone, Nystrom, Tissier, Goodwin, Sanders, Galt.
 SEBASTIAN, Conductor
- RIGOLETTO (*Verdi*) Friday Night, October 26, at 8:15
 With Pons, Glaz, Petroff, Pearce, Alvary, De Paolis, Cehanovsky, Calcagno, Ragusa,
 Lawlor, Nelson, Mills. CIMARA, Conductor

POPULAR SERIES

- LES CONTES D'HOFFMANN (*Offenbach*) Thursday Night, October 4, at 8:15
 With Albanese, Djanel, Glaz, Corvello, Turner, Jobin, Pinza, Valentino, Olitzki,
 De Paolis, Alvary, Garris, Tissier, Mills, Sanders. MEROLA, Conductor
- CARMEN (*Bizet*)
 With same cast as Regular Series performance. Thursday Night, October 11, at 8:00
- DER ROSENKAVALIER (*Richard Strauss*) Thursday Night, October 18, at 8:00
 With same cast as Regular Series performance.
- BORIS GODOUNOFF (*Moussorsky*) Thursday Night, October 22, at 8:00
 With same cast as Regular Series performance.
- DON GIOVANNI (*Mozart*) Thursday Night, October 25, at 8:00
 With same cast as Regular Series performance except Eleanor Steber will sing Donna Elvira
 and Nadine Conner will sing Zerlina.

EXTRA PERFORMANCES

- LA TRAVIATA (*Verdi*) Sunday Matinee, September 30, at 2:15
 With Albanese, Ragusa, Lawlor, Kullman, Valentino, De Paolis, Cehanovsky, Olitzki,
 Goodwin. MEROLA, Conductor
- CAVALLERIA RUSTICANA (*Mascagni*) Sunday Matinee, October 7, at 2:15
 With Della Chiesa, Glaz, Votipka, Kullman, Petroff.
 followed by
- I PAGLIACCI (*Leoncavallo*)
 With Albanese, Jobin, Valentino, Harrell, De Paolis, Tallone, Sanders.
 ADLER, Conductor
- TRISTAN UND ISOLDE (*Wagner*) Sunday Matinee, October 14, at 2:00
 With same cast as Regular Series performance except Margaret Harshaw will sing Brangane.
- LA TRAVIATA (*Verdi*) Wednesday Night, October 17, at 8:15
 With same cast as Regular Series performance.
- BARBER OF SEVILLE (*Rossini*) Sunday Matinee, October 21, at 2:00
 With Reggiani, Turner, Landi, Valentino, Baccaloni, Pinza, De Paolis.
 CIMARA, Conductor
- LA BOHEME (*Puccini*) Wednesday Night, October 24, at 8:15
 With same cast as Regular Series performance except Vivian Della Chiesa will sing Mimi.
- AIDA (*Verdi*) Saturday Night, October 27, at 8:00
 With Roman, Harshaw, Jagel, Petroff, Pinza, Alvary, De Paolis, Votipka.
 MEROLA, Conductor

For the finest music in radio . . .

Keep tuned to

KPO

★ **680** on your dial

John Charles Thomas
Sun. at 11:30 a.m.



Contented Hour
Mon. at 7:00 p.m.

General Motors Symphony
Sun. at 2:00 p.m.



Telephone Hour
Mon. at 9:00 p.m.

Album of Familiar Music
Sun. at 6:30 p.m.



Light and Mellow
Tues. at 9:30 p.m.

Hour of Charm
Sun. at 7:00 p.m.



Standard School Broadcast
Thurs. at 10:00 a.m.
(starting Oct. 18)

Standard Hour
Sun. at 8:30 p.m.



Waltz Time
Fri. at 6:00 p.m.

Voice of Firestone
Mon. at 5:30 p.m.



Know Your Symphony
Sat. at 5:00 p.m.



Part of a continuous Parade of Stars
heard over KPO and the
NATIONAL BROADCASTING COMPANY
America's Number One Network

THE SAN FRANCISCO OPERA ASSOCIATION

Presents

SAN FRANCISCO'S GREATEST DANCE FESTIVAL

An Unprecedented Ballet Revue

Old Classical

Modern

New Classical

THE ONE AND ONLY

Ballet Russe de Monte Carlo

Two Weeks — Fifteen Gala Performances

Repertoire

Evenings at 8:30

Tues. Eve., Nov. 13

BALLET IMPERIAL
*COMEDIA BALLETTICA
L'APRES MIDI D'UN FAUNE
LE BEAU DANUBE

Wed. Eve., Nov. 14

LE BOURGEOIS GENTILHOMME
*MOZARTIANA
SCHEHERAZADE

Thurs. Eve., Nov. 15

THE SNOW MAIDEN
*CONCERTO BAROCCO
DIVERTISSEMENTS FROM COPPELIA

Fri. Eve., Nov. 16

BALLET IMPERIAL
*FRANKIE AND JOHNNY
GRAND ADAGIO
LE BEAU DANUBE

Sat. Eve., Nov. 17

CONCERTO BAROCCO
DANSES CONCERTANTES
COMEDIA BALLETTICA
RODEO

Sun. Mat., Nov. 18

LES SYLPHIDES
LE BOURGEOIS GENTILHOMME
GRAND ADAGIO
RODEO

Sun. Eve., Nov. 18

MOZARTIANA
FRANKIE AND JOHNNY
L'APRES MIDI D'UN FAUNE
LE BOURGEOIS GENTILHOMME

Matinees at 2:30

Mon. Eve., Nov. 19

THE SNOW MAIDEN
MOZARTIANA
L'APRES MIDI D'UN FAUNE
SCHEHERAZADE

Tues. Eve., Nov. 20

CHOPIN CONCERTO
DANSES CONCERTANTES
COMEDIA BALLETTICA
RODEO

Wed. Eve., Nov. 21

CONCERTO BAROCCO
L'APRES MIDI D'UN FAUNE
THE NUTCRACKER

Thurs. Eve., Nov. 22

MOZARTIANA
FRANKIE AND JOHNNY
DIVERTISSEMENTS FROM COPPELIA

Fri. Eve., Nov. 23

LES SYLPHIDES
DANSES CONCERTANTES
PAS DE DEUX CLASSIQUE
SCHEHERAZADE

Sat. Mat., Nov. 24

LES SYLPHIDES
CONCERTO BAROCCO
COPPELIA

Sun. Mat., Nov. 25

THE SNOW MAIDEN
COMEDIA BALLETTICA
THE NUTCRACKER

Sun. Eve., Nov. 25

CONCERTO BAROCCO
COMEDIA BALLETTICA
MOZARTIANA
LE BEAU DANUBE

* San Francisco debut

ALEXANDRA DANILOVA
NATHALIE KRASSOVSKA
RUTHANNA BORIS
MARIA TALLCHIEF
DOROTHY ETHERIDGE
GERTRUDE SVOBODINA

PAULINE GODDARD
YVONNE CHOUTEAU
MARIE-JEANNE
FREDERIC FRANKLIN
LEON DANIELIAN
NICOLAS MAGALLANES

MICHEL KATCHAROFF
NIKITA TALIN
HERBERT BLISS
PETER DEIGN
ROBERT LINDGREN
STANLEY ZOMPAKOS

Brilliant Corps de Ballet · Symphony Orchestra · Company of 125



Tickets: \$3.00, \$2.40, \$1.80, \$1.20, Tax Incl. Opera Box Office, City of Paris, EX 8585
WAR MEMORIAL OPERA HOUSE



Carmen Cavallaro

AND HIS FAMOUS ORCHESTRA
OPENS TUESDAY, OCTOBER 2ND

hotel

MARK HOPKINS

GEO. D. SMITH • GENERAL MANAGER

MONROE-
ANDREW

A DISTINCTIVE MEN'S SHOP

British Woolens • Gentlemen's Furnishings
Hats—Sportswear

Custom Tailors

386 POST STREET

THE CONCERT DIVISION OF THE
SAN FRANCISCO OPERA ASSOCIATION

GAETANO MEROLA, *General Director*

PAUL POSZ, *Business Manager*

SEASON 1945-1946

A New High in Concert Values

TWO OPERAS — PLUS

Tuesday, Nov. 13
BALLET Russe
DE MONTE CARLO

Thursday, Jan. 3

TRAUBEL

Sunday, Jan. 6

HEIFETZ

Friday, Jan. 18
ROSARIO and ANTONIO

Monday, Jan. 21

SCHNABEL

Monday, Feb. 11

BJOERLING

Tuesday, Feb. 26

SERKIN

Tuesday, Mar. 5
ROBESON

Monday, Mar. 18

TOUREL

Tuesday, Mar. 26

MENUHIN

TICKET PRICES

Orchestra and Boxes, \$3.00; Dress Circle, \$1.80 Tax Included

Other Sections Sold Out

Opera Box Office — City of Paris — Ex 8585

WAR MEMORIAL OPERA HOUSE

4 VICTOR ALBUMS YOU SHOULD OWN

ENRICO CARUSO: Metropolitan Revivals from Lucia, Masked Ball, Rigoletto, La Boheme, Martha, I Lombardi, Faust, Samson et Delilah.

BORIS GODOUNOFF (abridged) Featuring Alexander Kipnis. All in Russian, complete on five 12-inch records.

SCENES FROM WAGNER OPERAS: Lauritz Melchior, singing arias from Siegfried, Tristan und Isolde, Lohengrin, Tannhauser, Der Fliegende Hollander.

DER ROSENKAVALIER: arranged as a symphonic suite; recorded by the Cincinnati Symphony Orchestra.

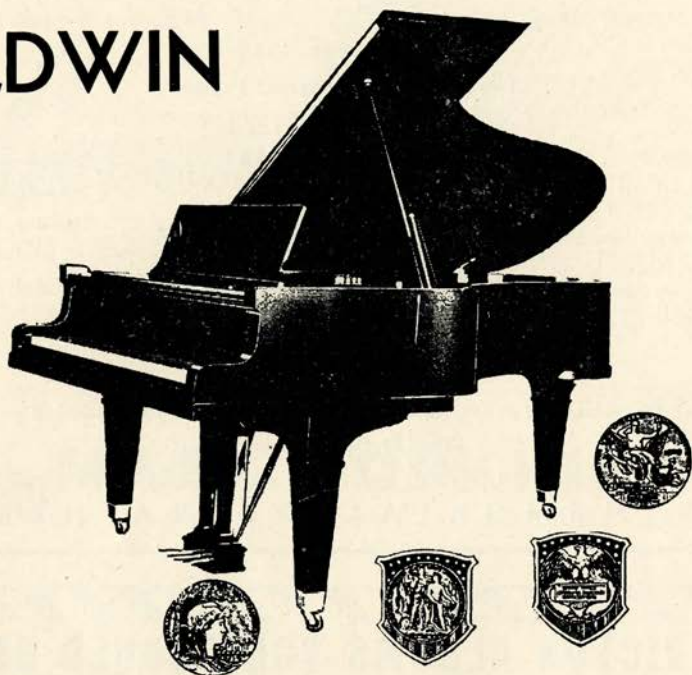
For opera albums or single records, we invite you to visit the Classics Room on our Record Balcony.

SCHWABACHER-FREY

MARKET OPPOSITE GRANT

THE OFFICIAL PIANO *of the*
SAN FRANCISCO OPERA COMPANY

BALDWIN



Choose your Piano as the Artists Do



Lily Pons

Ezio Pinza

Helen Traubel

THE BALDWIN PIANO CO.

310 SUTTER STREET, SAN FRANCISCO
1828 WEBSTER STREET, OAKLAND

San Francisco Symphony Orchestra

Pierre Monteux, Conductor

LEONORA WOOD ARMSBY, *President and Managing Director*

HOWARD K. SKINNER, *Business Manager*



SCHAPIRO
ANDERSON

STERN

MALCUZYNSKI
SCHNABEL

FLEISHER
MONTEUX

URY
HOROWITZ

KANDER

LEVANT
STRAVINSKY

Twelve Friday Afternoons

Promptly at 2:30 o'clock

- NOV. 23 OPENING CONCERT
 NOV. 30 VLADIMIR HOROWITZ, *Pianist*
 DEC. 7 ORCHESTRAL PROGRAM
 DEC. 14 GERHARD KANDER, *Violinist*
 DEC. 21 LEON FLEISHER, *Pianist*
 JAN. 4 MAXIM SCHAPIRO, *Pianist*
 JAN. 18 ARTUR SCHNABEL, *Pianist*
 FEB. 8 ISAAC STERN, *Violinist*
 MAR. 15 WITOLD MALCUZYNSKI, *Pianist*
 MAR. 22 IGOR STRAVINSKY, *Conductor*
 MAR. 29 TANYA URY, *Pianist*
 APR. 12 CLOSING CONCERT

Three Thursday Evenings

Promptly at 8:30 o'clock

- JAN. 17 ARTHUR SCHNABEL, *Pianist*
 FEB. 21 MARIAN ANDERSON, *Contralto*
 MAR. 7 OSCAR LEVANT, *Pianist*

Fourteen Saturday Evenings

Promptly at 8:30 o'clock

- NOV. 24 OPENING CONCERT
 DEC. 1 VLADIMIR HOROWITZ, *Pianist*
 DEC. 8 ORCHESTRAL PROGRAM
 DEC. 15 GERHARD KANDER, *Violinist*
 DEC. 22 LEON FLEISHER, *Pianist*
 JAN. 5 MAXIM SCHAPIRO, *Pianist*
 JAN. 19 ARTUR SCHNABEL, *Pianist*
 FEB. 9 ISAAC STERN, *Violinist*
 FEB. 23 MARIAN ANDERSON, *Contralto*
 MAR. 9 OSCAR LEVANT, *Pianist*
 MAR. 16 WITOLD MALCUZYNSKI, *Pianist*
 MAR. 23 IGOR STRAVINSKY, *Conductor*
 MAR. 30 TANYA URY, *Pianist*
 APR. 13 CLOSING CONCERT

Season Tickets Now On Sale

Sherman, Clay & Co., Kearny and Sutter Sts., San Francisco, Zone 8. SUTTER 1331

WAR MEMORIAL OPERA HOUSE

NOVEMBER 23, 1945 • APRIL 13, 1946



Nicholas Johnston

MASTER PHOTOGRAPHER

SAN FRANCISCO

427 POST ST. HOTEL ST. FRANCIS

YUKON 2061

THURSDAY NIGHT, OCTOBER 4, at 8:15

Les Contes D'Hoffmann

(*The Tales of Hoffmann*)

Opera in three acts with prologue and epilogue. Music by Jacques Offenbach.
Text by Jules Barbier.

THE CAST

Hoffmann, the poet.....		RAOUL JOBIN
Niclaus, his friend.....		HERTA GLAZ
Olympia, the mechanical doll.....		*EVELYNN CORVELLO
Giulietta, the courtesan.....		LILY DJANEL
Antonia, daughter of Crespel.....		LICIA ALBANESE
Voice of the Mother.....		CLARAMAE TURNER
Coppelius.....	} The Evil One in } Various Guises {	EZIO PINZA
Dappertutto.....		FRANCESCO VALENTINO
Dr. Miracle.....		EZIO PINZA
Schlemil, lover of Giulietta.....		WALTER OLITZKI
Spalanzani.....		ALESSIO DE PAOLIS
Crespel, father of Antonia.....		LORENZO ALVARY
Frantz.....		ALESSIO DE PAOLIS
Nathanael.....		JOSEPH TISSIER
Cochenille.....		JOHN GARRIS
Pittichinaccio.....		JOHN GARRIS
Hermann.....		ROBERT MILLS
Luther.....		W. VERNON SANDERS

Guests, Courtesans, Students, Servants.

** San Francisco Opera debut*

Corps de Ballet

STAGE DIRECTOR

ARMANDO AGNINI

CONDUCTOR

GAETANO MEROLA

CHORUS DIRECTOR

KURT HERBERT ADLER

TIME AND PLACE: Nineteenth Century; Various Parts of Europe

Act I: Prologue

Ballroom in Spalanzani's Home

Act II: Court of a Palace on the Grand Canal, Venice

Act III: Room in Antonia's Home, Munich

Epilogue: Same as Prologue

TICKETS FOR EXTRA PERFORMANCES
AT OPERA BOX OFFICE, CITY OF PARIS

Encores not permitted — Bell rings three minutes before curtain rises

The Story of "Les Contes d'Hoffmann"

PROLOGUE

The poet Hoffmann and his companion Niclaus are warmly greeted by Hoffmann's student friends. They drink and sing. His friends accuse Hoffmann of being in love. He pleads not guilty and in a dreamy mood agrees to tell the story of his three fantastic loves.

ACT I

Spalanzani, a mechanical genius, has constructed a lifesize doll that looks and acts like a human being. He exhibits her, Olympia, as his beautiful daughter. Hoffmann comes along and Coppelius, the Evil One, sells him a pair of magic glasses. He falls deeply in love with Olympia. Olympia is not responsive to his advances but she sings just as any lovely girl might do. Niclaus tries to persuade Hoffmann to give up his mad infatuation but the poet will not be dissuaded. But in the furious dance something goes wrong and the beautiful Olympia literally flies to pieces. To Hoffmann it is an uncanny, tragic end to his amours.

ACT II

Giulietta, a wonderously beautiful courtesan, is entertaining lavishly. She and Dapertutto sing the famous barcarolle. The maidens and men also sing. Hoffmann meets and loves Giulietta though Niclaus again tries to make him see things clearly. Dapertutto, the Evil One in human form, owns the shadow, or soul, of Schlemil, who also loves Giulietta. He too hopes to obtain the soul of Hoffmann. The poet easily falls into the trap laid by Giulietta when she tells him that he may have the key to her bedroom if he challenges Schlemil, who now has it. Hoffmann challenges and kills Schlemil. But instead of winning Giulietta he sees her sail off in a gondola, clasped in Dapertutto's arms. Nathaniel, the ever present protective influence, warns him the police approach. Once more he is disillusioned.

ACT III

Hoffmann loves the sweet, delicate Antonia. The girl's mother had been a great singer and Antonia also has a wonderful voice and loves to sing though it overtaxes her strength. Though her father forbids she sings for Hoffmann, greatly weakening her little store of energy. Dr. Miracle, the Evil One, comes to the girl and shows her a vision of her mother who urges her to sing. She obeys the vision and sings once again. The strain is too much, she literally sings herself to death. Hoffmann rushes in and her father, beside himself, demands blood for her pale cheeks. Knife in hand he advances upon Hoffmann but once more Nathaniel arrives in the nick of time. So ends the third romance.

EPILOGUE

Hoffmann has finished his stories. He has had three kinds of love — one that comes from mere beauty, one that springs from lustful passion, and one that comes from the heart based on pure motives. Now he has had enough. The students leave but Hoffmann does not go with them. He sits in a dream and a vision of his poetic Muse comes to him. In the future his only love will be her who never proves unfaithful. And he sleeps.



LADIES
PLEASE
REMOVE
YOUR
HATS

BEE & RAY
GOMAN'S
GAY 90'S
555 PACIFIC AVE
"ON THE OLD
BARBARY COAST"
CONTINUOUS
"NAUGHTY
NINETIES"
ENTERTAINMENT

"Original Gibson Girl" drawn by Charles Dana Gibson—1904, for Collier's Weekly.



DIFFERENT SKINS

NEED DIFFERENT FOUNDATIONS

That is why Monteil created *Beauty Balm* and *Sensitone Lotion*—the one for dry or normal skins, the other for those who like a lighter foundation.

Either will keep you beautifully powdered without that powdery look, diffusing your rouge into subtle colors echoes of your own complexion. *Beauty Balm* in white, bronzé and muted rose. *Sensitone Lotion* in natural, sun tan and muted rose.



Germaine Monteil

FRIDAY NIGHT, OCTOBER 5, at 8:00

† *Tristan und Isolde*

Opera in three acts. Music and Text (in German)

by Richard Wagner

THE CAST

Tristan, a Cornish Knight, nephew of King Mark.....	LAURITZ MELCHIOR
Isolde, Princess of Ireland.....	*HELEN TRAUBEL
Brangane, Isolde's friend and attendant.....	HERTA GLAZ
King Mark of Cornwall.....	LORENZO ALVARY
Kurvenal, Tristan's devoted servant.....	HERBERT JANSSEN
Melot, one of King Mark's courtiers.....	WALTER OLITZKI
Shepherd	JOHN GARRIS
Steersman	CHARLES GOODWIN
A Sailor's Voice.....	JOHN GARRIS

Sailor Lad, Sailors, Knights, Esquires, Men-at-Arms.

** San Francisco Opera debut*

STAGE DIRECTOR

HERBERT GRAF

CONDUCTOR

WILLIAM STEINBERG

CHORUS DIRECTOR

KURT HERBERT ADLER

TIME AND PLACE: *Legendary*

Act I: On Board a Vessel Nearing the Cornish Coast

Act II: Garden Before Isolde's Castle; Summer Night

Act III: Garden of Tristan's Estate in Brittany

†Extra Performance of "Tristan and Isolde," Matinee, October 14

TICKETS FOR EXTRA PERFORMANCES
AT OPERA BOX OFFICE, CITY OF PARIS

Encores not permitted — Bell rings three minutes before curtain rises

The Story of "Tristan und Isolde"

PROLOGUE: Sent to capture Cornwall to collect tribute, Morold, a chieftain affianced to the Irish princess, Isolde, is slain by Tristan, favorite nephew of King Mark of Cornwall. For his own wounds, Tristan, incognito, seeks the aid of Isolde, famed for her healing. Recognizing him by a notch in his sword as the slayer of her betrothed, Isolde plans to kill Tristan but falls in love with him and stays her hand. But Tristan sees in her only a queenly wife for King Mark. Presently Tristan returns to Ireland to bespeak Isolde for the bride of his uncle. Isolde accepts and they take ship for Cornwall. Tristan has now come to realize his own love for Isolde but bound by honor has carefully remained away from her during the voyage. As the ship nears Cornwall's shores, the drama begins.

ACT I

Infuriated at Tristan's apparent indifference and despondent at the thought of her approaching loveless marriage, Isolde tells Brangäne the story of her unrequited love for Tristan and, commanding her to prepare a poisonous draught, summons Tristan to her presence. Brangäne, sensing disaster, substitutes a love potion for the poison cup. When Tristan comes Isolde reproaches him for the death of Morold. He offers his sword for her revenge but she, feigning forgiveness, proposes they drink a pledge of peace. Together they drain the cup prepared by Brangäne and succumbing to its rapturous charm remain oblivious to their surroundings as the vessel reaches shore.

ACT II

Isolde, wedded to King Mark, has continued her relations with Tristan. They are suspected by Melot, a knight of the court, who arranges a pretended hunt in the hope of trapping the lovers. As the curtain rises Brangäne confesses to Isolde her substitution of the love philtre. Fearing the hunt a ruse, she warns Isolde not to signal for a meeting with Tristan. But Isolde, lost in the intoxication of the love potion, will not heed and waves a beckoning handkerchief. The unexpected return of the hunters interrupts a long and ardent love scene. King Mark bitterly reproaches Tristan and offers him banishment. But Melot, shouting treason, rushes forward, sword in hand. Tristan draws in turn but, seeking only death with honor, drops his guard and receives a mortal wound.

ACT III

Tristan lies delirious in his castle where he has been taken by Kurvenal who has sent for Isolde knowing that only she can cure his master's wounds. In a lucid moment Kurvenal tells Tristan of Isolde's expected coming. The pipe of a shepherd, posted to signal the approach of her ship, takes on a joyous note. Kurvenal, crying out that Isolde comes, rushes off. Tristan, overcome by joy, tears at his bandaged wounds and staggering to his feet as Isolde arrives, dies in her arms. King Mark, having learned of the love potion, has followed in forgiveness close behind Isolde. Kurvenal, barring entrance, slays Melot and is killed by the soldiers. King Mark invokes a blessing on the dead as Isolde sings to her dead love the immortal Liebestod.

Business eyes turn West—and widen!

Congestions of war, imposed upon our Western economy, serve usefully to "discover" the basic resources of the West, the capacity of the West to produce and manufacture, and the nearness of our Pacific Coast to the huge postwar markets surrounding the world's biggest waterway.

These facts, known here, now are being regarded with quickening appreciation elsewhere. Colored pins are being shifted west on boardroom wall maps in many a home office.

This Bank, for over eighty years associated with the sensible development of our Pacific Coast, offers two advantages to business and industry. First, our long-established offices in all three Pacific Coast states afford on-the-ground service fitted to each area. Second, our Foreign Exchange department is thoroughly familiar with market contacts throughout the Pacific Basin. For business with or on the Coast or through our ports into the Pacific, the established contacts and long experience of this Bank can be of definite value.

*Head Office: 400 CALIFORNIA STREET
Mission Branch: 16TH & JULIAN AVENUE*

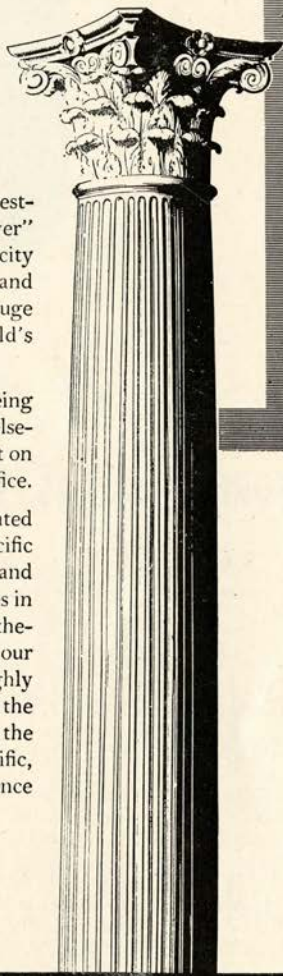
THE BANK OF CALIFORNIA

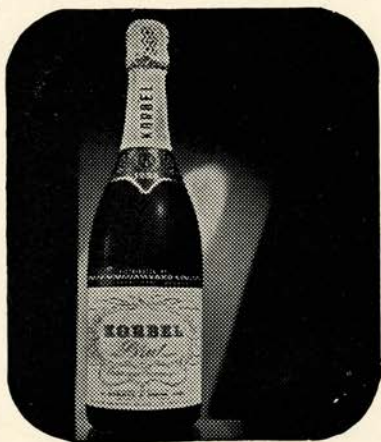
NATIONAL ASSOCIATION

Founded in 1864

Member Federal Deposit Insurance Corporation

SAN FRANCISCO • PORTLAND • SEATTLE • TACOMA





It Stands Alone

KORBEL BRUT IS TOPS IN AMERICAN CHAMPAGNE

Magazines which reach the most sophisticated audience in the United States unanimously give first place in American Champagnes to KORBEL BRUT
WE didn't say it first! THEY DID!

"THE BEST AMERICAN CHAMPAGNE to date is KORBEL BRUT. Our guess is anyone would think it was imported."
—Harper's Bazaar

"PROBABLY THE MOST CHAMPAGNE-LIKE domestic wine is KORBEL BRUT."
—Cue Magazine

"THE OUTSTANDING AMERICAN CHAMPAGNE to date is KORBEL BRUT."
—Town and Country

"EXTREMELY ENJOYABLE, bone-dry and clean-tasting."
—The New Yorker

"AMONG THE FEW FINE CALIFORNIA CHAMPAGNES IS KORBEL BRUT—a special cuvee which has been made as dry as the dryest Champagnes for the English market."
—St. Regis, Peacock Alley, The Ambassador, Plaza En Passant, The Savoyard, The Ritz Carlton, The Hampshire, The Sherry-Netherlands, Pierrot

K O R B E L BRUT ROUGE
SEC PINK

Distributed by

TRADERS DISTRIBUTING CO.
314 FRONT STREET, SAN FRANCISCO, CALIFORNIA

21 BRANDS, INC.
17 E. 52nd ST., NEW YORK CITY

OPERA BOX HOLDERS

Season 1945

MR. AND MRS. GEORGE WASHINGTON BAKER, JR.	MR. AND MRS. ARTHUR DALE KING
MRS. GEORGE EDWIN BENNETT	MRS. MARCUS S. KOSHLAND
MR. AND MRS. CHARLES R. BLYTH	MRS. SAMUEL KNIGHT
MR. AND MRS. JAMES PARKS BRADLEY	MRS. RICHARD MCCREERY
MR. AND MRS. JOHN DAVIS BRADLEY	MR. AND MRS. JULLARD McDONALD
MR. AND MRS. ROY BRONSON	MRS. FELIX MCGINNIS
MR. AND MRS. GEORGE T. CAMERON	MR. AND MRS. FREDERICK W. McNEAR
MR. AND MRS. JOHN B. CELLA	MR. AND MRS. GAETANO MEROLA
MR. AND MRS. WILLIAM W. CROCKER	MR. AND MRS. C. O. G. MILLER
MRS. FRANK P. DEERING	MRS. EPPS J. MILLER
MR. AND MRS. SIDNEY M. EHRMAN	MR. AND MRS. KENNETH MONTEAGLE
MR. AND MRS. MORTIMER FLEISHHACKER	MRS. RYER NIXON
DR. AND MRS. FRANK R. GIRARD	MRS. ARLINE M. ROLKIN
MR. AND MRS. JOSEPH T. GRACE	MRS. HENRY POTTER RUSSELL
MRS. CRESCENT PORTER HALE	SAN FRANCISCO OPERA GUILD
MRS. PRENTIS COBB HALE	JUDGE AND MRS. M. C. SLOSS
MR. AND MRS. CHARLES L. HARNEY	MR. SIGMUND STERN
MRS. I. W. HELLMAN	MR. AND MRS. NION R. TUCKER
MR. AND MRS. CLARENCE LORAN JOHNSTON	MR. AND MRS. KARL C. WEBER

IMPORTANT

Change in Opera Dates

"DIE WALKURE" will be given Tuesday, Oct. 9,
Instead of Friday, Oct. 12

"BORIS GODOUNOFF" will be given Friday, Oct. 12,
Instead of Tuesday, Oct. 9

Ticket holders will please be guided by the name of the opera
instead of the date.

FERRARI  **NICOLAUS**

AND FORMER FIRM OF **TRAINER & PARSONS**

Dispensing Opticians

444 POST

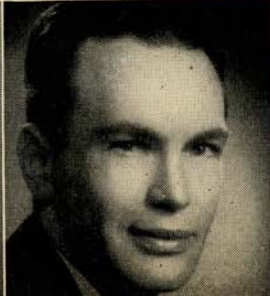
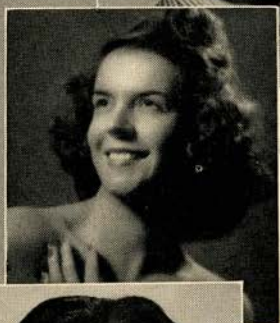
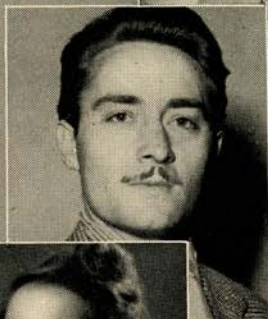
SAN FRANCISCO

PISANI PRINTING & PUBLISHING CO.

Fine Printing



700 MONTGOMERY STREET • PHONE SUtter 4772
SAN FRANCISCO



CLARAMAE TURNER

ROBERT MILLS

KATHLEEN LAWLOR

CHARLES GOODWIN

EVELYN CORVELLO

GEORGE TALLONE

MURIEL DEMERS

HERBERT NYSTROM

LORRAINE CALCAGNO

ROBIN NELSON

BRITTA ANDERSON

Artists of the San Francisco OPERA COMPANY

Atop Nob Hill

ZEBRA ROOM

COCKTAILS
LUNCH * DINNER

An atmosphere of cultured intimacy where
meals are better and enjoyment is enhanced
by NELLE CALLAHAN at the
Hammond Organ

★

HUNTINGTON HOTEL

NOB HILL

1075 CALIFORNIA

EUGENE N. FRITZ, Managing Owner

COLUMBIA CONCERTS, INC.

Presents

"GREAT NAMES IN MUSIC"

Appearing 1945 San Francisco Opera Season

LICIA ALBANESE
LORENZO ALVARY
CHARLES KULLMAN

MARGARET HARSHAW
LILY PONS
RISE STEVENS

Appearing San Francisco Opera Concert Series, 1945-1946

HEIFETZ
JUSSI BJOERLING
JENNIE TOUREL
ROSARIO and ANTONIO

RUDOLF SERKIN
YEHUDI MENUHIN
PAUL ROBESON
HELEN TRAUBEL

COLUMBIA CONCERTS, Inc., 113 West 57th Street, New York
San Francisco Representative, PAUL POSZ, War Memorial Opera House
Los Angeles Representative, L. E. BEHYMER, 415 Auditorium Building

SAN FRANCISCO TRADITION

BEFORE THE OPERA

...Dine in the exquisite Garden Court

AFTER THE OPERA

...Dance in the Rose Room to the music of

DEL COURTNEY

and his orchestra



The Palace Hotel

EDMOND A. RIEDER, General Manager

FREE

Opera Broadcast Program

☆ The San Francisco Opera Company's 23rd Annual Season is being broadcast over radio station KFRC.

To better enjoy the operas you are unable to attend, Safeway has prepared a 56-page souvenir broadcast program.

For your free Opera Program write Post Office Box 2189, San Francisco 26, California.

These broadcast programs are available in the foyer of the Opera House.



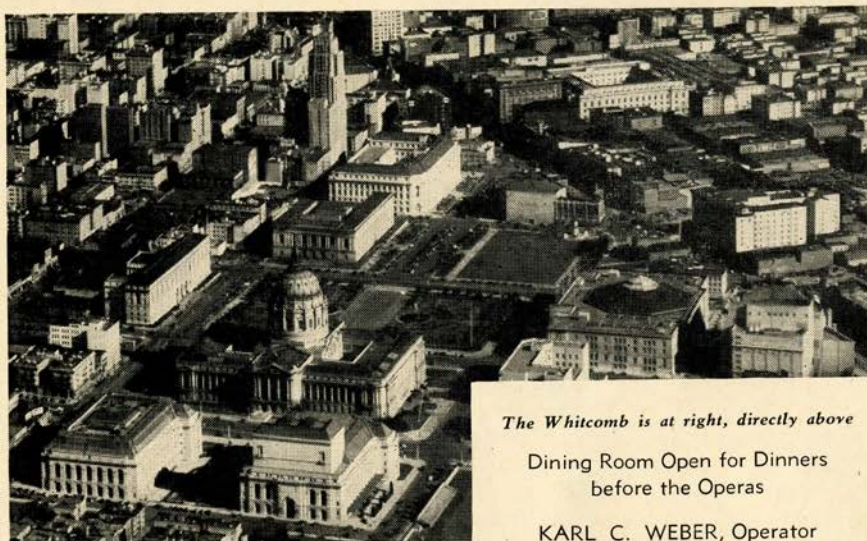
JOSEPH TISSIER
ROSE AGNES HERSCH
EVARISTO ALIBERTINI
PAUL GUENTER

ELMA HEITMAN
MARILYNN KING
BIANCA BRUNI
FREDERIC WILLIAMS

BETTIE SANDERSON
AUGUSTO LORENZO
BENJAMIN MARTIN
ROBERT BRUCE MACKAY

LEO GALT
MAX LORENZINI
W. VERNON SANDERS
PAUL LEIBER

Artists of the San Francisco OPERA COMPANY



The Whitcomb is at right, directly above

Dining Room Open for Dinners
before the Operas

KARL C. WEBER, Operator

SAN FRANCISCO'S LEADING HOTEL AT THE CIVIC CENTER

HOTEL WHITCOMB

*Plan Today for
Tomorrow*

"PAY CASH and SAVE"

WEINSTEIN CO.

• 1041 MARKET ST.

• 100 MARKET ST. • 1620 POLK ST.

• 615 MARKET ST. • 119 POST ST.

HOW TO PRONOUNCE THEIR NAMES

LICIA ALBANESE	<i>Lee'-chee-ah Ahl'-bah-nay'-zay</i>	HERBERT JANSSEN	<i>Herbert Yahn'-senn</i>
LORENZO ALVARY	<i>Lorenzo Ahl'-vah'ry</i>	RAOUL JOBIN	<i>Lotte Lay'-mahn</i>
ARMANDO AGNINI	<i>Ar-mahn'-dow Ah-nee'nee</i>	BRUNO LANDI	<i>Brewno Lahn'-dee</i>
SALVATORE BACCALONI	<i>Sahl'-vah-tow'-ray Bach-ah-low'-nee</i>	LOTTE LEHMAN	<i>Rah-ool Zhoh'-ban'</i>
ETIENNE BARONE	<i>Et-yehn Bah-row'-nay</i>	LAURITZ MELCHIOR	<i>Lauritz Mell'-kee-or</i>
FRANCES CASTELLANI	<i>Frances Kah-stay-lahn'-ee</i>	GAETANO MEROLA	<i>Gah-yay-tahn'-oh Mare'-oh-lah</i>
GEORGE CEHANOVSKY	<i>George Chay-han-off'-skee</i>	IVAN PETROFF	<i>Ee-vahn Pet-roff</i>
VIVIAN DELLA CHIESA	<i>Vivian Dell-lah-Kee-ay'-zah</i>	EZIO PINZA	<i>Et'-see-oh Peen'-zah</i>
OTELLO CERONI	<i>Otello Chay-row'-nee</i>	LILY PONS	<i>Lee-lee Pawnce</i>
ANTONIO DELL'OREFICE	<i>Antonio Dell-oh-reff'-ee-chay</i>	ANITA RAGUSA	<i>Anita Rah-goo'-sah</i>
ALESSIO DE PAOLIS	<i>Ah-less'-see-oh Deh Pah'-oh-leece</i>	HILDE REGGIANI	<i>Hill-day Rah-jah'-nee</i>
LILY DJANEL	<i>Lee-lee Zhan-nel!</i>	KARL RIEDEL	<i>Karl Ree-dell</i>
HERTA GLAZ	<i>Hair-tah Glahz</i>	STELLA ROMAN	<i>Stay-lah Row-mahn'</i>
FREDERIC JAGEL	<i>Frederick Yag-gel</i>	ELEANOR STEBER	<i>Eleanor Stee'-burr</i>
		RISE STEVENS	<i>Ree'-suh Stevens</i>
		HELEN TRAUBEL	<i>Helen Trah'-oo-bell</i>
		FRANCESCO VALENTINO	<i>Francesco Vah-lenn-teen'-oh</i>

BELFAST

★
 Manufactured
 by the makers
 of
BELFAST
 Dry
GINGER ALE
 Famous
 Since 1877



*Sparkling
 Water*

PURE, wholesome and delightful to the taste, Belfast Sparkling Water is the ideal table beverage...it is *supreme* among the better mixers — heightens the flavor of other beverages and gives longer-lasting sparkle in the glass.

BELFAST BEVERAGE CO.

820 Pacific Avenue

DOuglas 0547

San Francisco



Gantner ***Swimsuits***

***San Francisco's
proudest and
America's finest***

Top . . . Black Magic Nylon
Sarong . . . very light and quick
drying! One of many beautiful
Gantner styles which have be-
come famous.

GANTNER & MATTERN CO.

San Francisco • Chicago • New York

KQW and CBS

present

PATRICE MUNSEL

. . . lovely young soprano of
the Metropolitan Opera . . .

on

THE FAMILY HOUR

every Sunday

2:00 - 2:30 p.m.

KQW

The Columbia Station
for the San Francisco
Bay Area

740 on the dial

VISIT...

The Cocktail Lounge
of Distinctive
Atmosphere

**CARDINAL
RICHELIEU
ROOM**

Van Ness at Geary
"Just a Short Walk"



Milan Lambert
at the Organ

RICHELIEU HOTEL

Leopold Lerner, Manager

GUARANTOR MEMBERS

of the

SAN FRANCISCO OPERA ASSOCIATION

Mrs. L. C. Abbott
S. L. Abbot
C. Edgar Adams
Mrs. C. R. Adams
Albert N. Ades
Mrs. John S. Adler
Mrs. Wallace Alexander
Lucy H. Allyne
T. E. Ambrose
Thelma Anderson
F. W. Armour
Lawrence H. Arnstein
Edward R. Bacon
Mr. and Mrs. Frazer Bailey
Elsa M. Baker
Mr. and Mrs. George
Washington Baker, Jr.
Baldwin Piano Co.
A. R. Baldwin
B. A. Banker
Mrs. John Thomas Barnett
Peter Barnett
J. F. Barrett
Mrs. Edward F. Barron
Irving Bartel
Harriett Bathgate
Dominic A. Bazzanella
Mr. and Mrs. R. S. Beall
Mr. and Mrs. F. N. Belgrano, Jr.
Melvin Belli
David Benioff
Mrs. George Edwin Bennett
Mrs. Charles H. Bentley
Mrs. Walter H. Bentley
Franklin L. Besley
Elsie A. Best
Dr. Tholow Binkley
Mrs. James H. Bishop
Newton Bissinger
W. Harry Blatchly
Louis Bloch

Mrs. Arthur L. Bloomfield
Mr. and Mrs. Charles R. Blyth
Mrs. Angus Gordon Boggs
Mrs. Robert C. Bolton
Mrs. F. E. Boyd
Louise A. Boyd
Mr. and Mrs. James Parks
Bradley
Mr. and Mrs. John Davis Bradley
Mr. and Mrs. Walter C. Brauns
G. Temple Bridgman
Mrs. William Ellery Briggs
Roy A. Bronson
Mrs. John F. Brooke
Julia Fox Brooke
George W. Brooks
Dr. LeRoy Brooks
Arthur M. Brown, Jr.
J. Arthur Brown
James A. Brown
Mr. and Mrs. Louis C. Brown
Ralph Brown
Walter D. Brown
Mrs. E. E. Brownell
Starr Bruce
Frank J. Brucato
Frank E. Buck
Leonard W. Buck
Thomas Buck
Mr. and Mrs. F. Neil Buckley
Daniel W. Burbank
Mrs. Prentis T. Burtis
Dr. and Mrs. Edmund Butler
Mrs. Felix Butte
Mrs. John R. Cahill
Dr. William Otis Callaway
Mr. and Mrs. George T. Cameron
Lillian Campbell
Estelle Carpenter
Craig Carrier
Kenneth Cassidy

Augustine Cazenave
Mr. and Mrs. John B. Cella
Selah Chamberlain, Jr.
E. M. Chandler
Drew Chidester
Charles A. Cristin
John J. Cimino
Mrs. Baylies V. Clark
Maud H. Clark
S. G. Clark
Mrs. Tobin Clark
Capt. and Mrs. Robert A. Clarke
Mrs. John P. Coghlan
Mr. and Mrs. George D. Cohn
Mrs. Max M. Cohn
Mrs. Colbert Coldwell
Persis H. Coleman
H. D. Collier
Mr. and Mrs. Jesse C. Colman
J. J. Coney
Mary R. Conlin
Dr. and Mrs. Frederick C. Cordes
Arthur S. Crites
Carrie Bell Crocker
Mr. and Mrs. W. W. Crocker
George E. Crothers
Thomas B. Crowley
Ralph K. Davies
Alvin Davis
Mr. and Mrs. Stuart Davis
Florence E. Dean
Mrs. Charles J. Deering
Mrs. Frank P. Deering
Mrs. George deLatour
Dr. Joseph Del Genovese
Mrs. Walter A. de Martini
Frank H. Denman
John Michael Desch
Richard Detert
Mrs. Robert T. Devlin
Mrs. B. J. Dietrich



Orchids

from Podesta & Baldocchi,
America's Most Famous
Florist, make any occasion
more festive.

Podesta & Baldocchi

America's Most Famous Florists

Telephone: SUTTER 6200

224 GRANT AVENUE, SAN FRANCISCO



ATTIL HARP SCHOOL

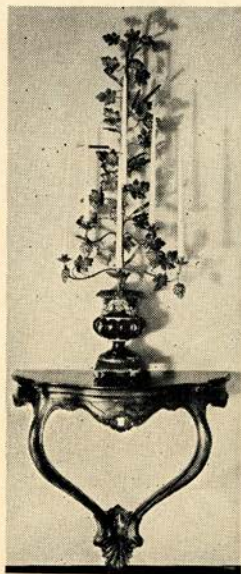
KAJETAN ATTIL, formerly 28 years First Harpist with the
San Francisco Symphony and Opera Association

INSTRUCTION IN HARP
HARPS — MUSIC AND STRINGS

1030 BUSH STREET, SAN FRANCISCO

PHONE: ORdWAY 6367

Artist Students available for engagements



BUY WAR BONDS



Fine Antiques



*Excellent
Craftsmanship*



K. H. LENGFELD

Interior Decorator



1409 SUTTER STREET, SAN FRANCISCO

GUARANTOR MEMBERS—Continued

- | | | |
|--|---|---|
| <p>Mrs. L. W. Dinkelspiel
Mrs. Samuel L. Dinkelspiel
N. S. Dodge
Mrs. Robert Dollar II
Mrs. Leo Domb
O. Dewey Donnell, Jr.
Katharine Donohoe
Mrs. F. A. Dorn
D. C. Dorward
F. M. Dorward
R. E. Doyle
Elsie L. Dunbar
Mrs. Frank H. Dunne
Mrs. Charles Dunphy
Mrs. Dunne Dutton
Capt. and Mrs. James J. Dwyer, Jr.
Dr. and Mrs. George Ebricht
Dr. Muriel E. Edwards
Albert L. Ehrman
Alexis L. Ehrman, Jr.
Mrs. Alfred Ehrman
Mr. and Mrs. S'dney M. Ehrman
Wilfred Eldred
H. A. Ellis
John W. Elwood
Mark C. Elworthy
G. Epstein
Mrs. Milton H. Esberg
Milton H. Esberg, Jr.
L. Ets-Hokin
Dr. and Mrs. Harold K. Faber
F. C. Fabry
Arthur C. Farlow
Alfred Fasani
Lionel B. Feigenbaum
James E. Fickett
Mrs. Marshall Fisher
James Fisher-Northrop
Carl Fleischer
Mr. and Mrs. Mortimer Fleishhacker
John F. Forbes
Mr. and Mrs. Edward T. Ford
Francis F. Forsell
Mr. and Mrs. T. G. Frank
Mrs. Jennie S. Frank
Lt. and Mrs. Richard L. Frank
Dr. Charles L. Freytag
Mr. William Fries
Kenneth E. Fultz-Vayette
Nelly Gaffney
Mr. and Mrs. Maurice A. Gale
L. Galtie
Gordon L. Gates
Mr. and Mrs. Henry Gede, Jr.
Dr. Ernst Gehrels
Alvin Gerlack
Mark L. Gerstle
Mrs. D. Ghirardelli
D. Lyle Ghirardelli
Dr. Arthur Collis Gibson</p> | <p>Maud M. Gibson
George B. Gillson
Dr. and Mrs. Frank R. Girard
Mr. and Mrs. Harry F. Gittings, Jr.
J. Harry Goff
Maurice L. Goldman
Mr. and Mrs. Louis S. Goldstein
Lutie D. Goldstein
Jack Gomperts
Mrs. Thomas Gonda
Lorraine C. Goodman
Dr. William A. Gorman
Mr. and Mrs. Joseph T. Grace
Mrs. Joseph D. Grant
Mrs. Richard Gray
Mrs. Maurice S. Greenberg
Mr. and Mrs. Stuart N. Greenberg
Mrs. F. S. Greenlee
Mrs. Hayes Griffin
Mark E. Guerin
Mr. and Mrs. Berthold Guggenlime
Gustav G. Gumpel
Mrs. Alfred S. Gunn
Madeleine Haas
Mrs. Crescent Porter Hale
Marshal Hale
Mrs. Prentiss Cobb Hale
Prentiss C. Hale, Jr.
R. B. Hale
Herbert E. Hall
Eminel P. Halsted
Marshall S. Hanrahan
Mr. R. C. Hansen
Mrs. Robert D. Harden
W. G. Harmon
Mr. and Mrs. Charles L. Harney
Irving F. Harris
Gregory A. Harrison
Maurice E. Harrison
Mrs. Henry H. Hart
S. M. Haslett
Mrs. Russell P. Hastings
Mrs. Juanita O. Hatch
Mr. and Mrs. Elystus Hayes
Mrs. Timothy Hayes
A. W. Hazen
Mrs. E. S. Heller
Mr. and Mrs. Walter D. Heller
Walter S. Heller
Mrs. I. W. Hellman
Mrs. Robert Henderson
Dr. and Mrs. Ernest E. Hessing
Mr. and Mrs. Stanley Hiller
Mr. and Mrs. Leslie W. Hills
Harry H. Hilp
J. H. Hinrichsen
Barnard J. Hirsch
George H. Holt
Osgood Hooker
Mr. and Mrs. L. Arundel Hopkins
Mrs. Samuel Hopkins</p> | <p>Robert A. Hornby
Mrs. H. A. Hornlein
Kurt Huber
Robert Hulbert
Dr. Harvey S. Hunsberger
Marion Huntington
Mrs. William Hyman
Mrs. James Irvine
Dr. S. Nicholas Jacobs
R. J. Jansen
Mr. and Mrs. Louis Jefferys
Otto Jeidels
Mrs. Charles A. Jewel
Mr. and Mrs. Clarence Loran Johnston
Ector R. Johnson
Mrs. Sophie Johnson
Major General Kenyon A. Joyce
Mrs. Chester W. Judson
Jean Juillard
Mrs. Ira Kahn
Mr. and Mrs. Samuel Kahn
Henry J. Kaiser
Walter F. Kaplan
S. Kauffman
Mr. and Mrs. Edward D. Keil
H. C. Kelsey
Charles Kendrick
Easton Kent
Mr. and Mrs. Marion H. Kent
Mr. and Mrs. Arthur Dale King
Percy L. King
Dr. John J. Kingston
John E. Kinney
R. W. Kinney
Mrs. Josephine R. Kleinjung
Paul L. Kleinsorge
Mrs. William E. Kleinsorge
Robert L. Kline
Mrs. Samuel Knight
Caroline Korbel
Elsa R. Korbel
Mrs. Jesse Koshland
Mrs. Marcus S. Koshland
Frederick J. Koster
Mrs. C. M. Kretschmer
Dr. Henry M. Kretzmann
Mr. and Mrs. E. V. Krick
Gus Kroesen
Theodore Kroesen
Esther Kuenz
Gustave Lachman
Mrs. Albert G. Lang
Mrs. Philip V. H. Lansdale
Mrs. Charles G. Lathrop
Mrs. H. M. Lawrence
L. H. Lazarus
Edwin Leitch
Leopold Lerner
John A. Lesoine
Mr. and Mrs. Paul Levey
Robert L. Levin</p> |
|--|---|---|

CLAIRE BROWN

278
POST ST.

NEW HATS FOR FALL

ADELE MORAN

INFANTS AND CHILDREN'S WEAR
EXCLUSIVELY

Formerly with H. Liebes & Co.

18 Tillman Place

Next door to Temple Bar Tearoom

THE SAN FRANCISCO BALLET GUILD
Mrs. JULLIARD McDONALD, *Pres.*

Announces

San Francisco Ballet

WILLAM CHRISTENSEN
Artistic Director

HAROLD CHRISTENSEN
Ballet School Director

REYNOLD WIGGINS
Business Manager

in their

Third Annual Holiday Ballet Season

Children's Christmas Matinee

SUNDAY, DEC. 23

Gala Holiday Evenings

WEDNESDAY - - - - - DEC. 26

THURSDAY - - - - - DEC. 27

WAR MEMORIAL OPERA HOUSE

STOCKTON - - - - - FRIDAY, DEC. 28

SACRAMENTO - - - - - SATURDAY, DEC. 29

OAKLAND - - - - - SUNDAY, DEC. 30

The Ballet leaves for their eastern tour on Feb. 1st
returning May 1st

for the

Spring Ballet Homecoming

(Date to be announced)

Tickets for Holiday Ballet On Sale Normandy Lane Box Office. EX 8585

GUARANTOR MEMBERS—Continued

J. B. Levison
 Azro N. Lewis
 Mrs. A. J. Lewthwaite
 Mrs. Samuel Lilienthal
 P. N. Lilienthal
 Mr. and Mrs. William J. Lindenberger
 F. L. Lipman
 Mrs. Norman B. Livermore
 Lawrence Livingston
 James K. Lohead
 George D. Lovick
 J. W. Longe
 Louis R. Lurie
 Carl D. Lovotti
 James Rowland Lowe
 Mrs. A. D. Lowengart
 Mrs. A. J. Lowrey
 Edmunds Lyman
 Edna May Lyon
 James W. McAlister
 Mrs. T. R. McCarron
 Mr. and Mrs. A. M. McCarty
 Albert Connell McCary
 Mrs. Wm. H. McCormick
 Mrs. Richard S. McCreery
 Mr. and Mrs. Juilliard McDonald
 Mrs. Mark L. McDonald
 Mrs. John McGaw
 Mrs. Felix S. McGinnis
 Mrs. Lacy Maclean
 Mrs. Alfred McLaughlin
 Mrs. Clarissa McMahon
 Dean Brown McNealy
 Mr. and Mrs. F. W. McNear
 Mrs. George P. McNear
 Mr. and Mrs. Victor Maas
 Mrs. A. MacDonald
 Mr. and Mrs. John B. Mackinlay
 Marshall P. Madison
 Mr. and Mrs. Grover A. Magnin
 F. Bruce Maiden
 Mrs. J. W. Mailliard, Jr.
 Mr. and Mrs. Joseph A. Mancini
 A. F. Manspeaker
 George M. Mardikian
 Dorothy S. Marion
 Mr. and Mrs. Randolph Wyatt Martenet
 Edward Martin
 A. C. Mattei
 Mrs. Jack Maxfield
 Dr. Alice F. Maxwell
 Mr. and Mrs. Harry O. Maxwell
 Evelyn Mendessolle
 Mr. and Mrs. Gaetano Merola
 Mrs. H. C. Merritt, Jr.
 Mrs. Julian J. Meyer
 Olga M. Meyer
 Merwin A. Meyers
 Mr. and Mrs. Van Vissing Midgely
 Mr. and Mrs. C. O. G. Miller
 Mrs. Epps J. Miller
 Mrs. Maxwell C. Milton
 Henrietta Moffat
 Mr. and Mrs. Edward F. Moffatt
 James K. Moffitt
 Charles W. Moisson
 Mario Mondin
 Mr. and Mrs. Kenneth Monteagle
 Mr. and Mrs. Paige Monteagle
 Frederick H. Montgomery
 Mrs. Joseph A. Moore
 A. C. Morici
 Marion Morris
 Mrs. H. D. Mortenson
 Guido J. Musto
 Laura Musto
 Marion Naffziger

E. M. Nagel
 Mr. and Mrs. Ralph R. Nelson
 Julia M. Neppert
 Hugo D. Newhouse
 Dr. and Mrs. Alfred Newman
 Richard C. Newmeyer
 John Francis Neylan
 George W. Nickel
 Mrs. Ryer Nixon
 Harry Ogilvie
 Carl F. Ohliger
 Benjamin J. Older
 Mr. and Mrs. Edwin Letts Oliver
 George R. Orme
 Dr. B. H. Page
 Charles R. Page
 Mrs. S. H. Palmer
 T. B. Palmer
 Lorriene Parisen
 Mrs. Henry Passow
 Dr. Sadie D. Patek
 Gertrude Pauson
 Mrs. Oscar Butler Perry
 Howard Peterson
 George W. Phillips, Jr.
 Mrs. Margaret A. Phillips
 Mrs. Herman Phleger
 Tecla Pieper
 Mr. and Mrs. G. Pisani
 Mrs. H. D. Pischel
 A. Poladian
 Mrs. Paul Posz
 Mrs. Ashton H. Potter
 Mr. and Mrs. Stanley Powell
 Colonel John Sedgwick Pratt
 Walter G. Preddy
 Dr. Edward Purcell
 Mr. and Mrs. John B. Quigley
 Mrs. Carl Raiss
 Mrs. Lloyd F. Reighley
 Dr. Ralph A. Reynolds
 Neville J. Rich
 H. A. Richardson
 Mrs. H. W. Richards
 Mrs. Robert Ritchie
 Harrison S. Robinson
 Dr. Frank H. Rodin
 Mrs. N. Rogers
 Arline Miller Rolkin
 Colonel Robert A. Roos
 John N. Rosekrans
 Leland S. Rosemer
 Alexander Ross
 Donald L. Ross
 Edmund A. Rossi
 Mrs. Angela Wing Roth
 Mrs. William P. Roth
 John Rothschild
 Ken F. Royce
 Mohr M. Rubin
 Frank K. Runyon
 Mrs. A. S. Russell
 Michael J. Ryan
 Charles B. Sanders
 Robert H. Scanlon
 Carl Schaubye
 Else Schilling
 Dr. Walter Schilling
 George B. Schirmer
 Dr. G. D. Schoonmaker
 Mr. and Mrs. Albert E. Schwabacher
 Mrs. Frank Schwabacher
 James H. Schwabacher
 Mrs. Louis A. Schwabacher
 Mr. and Mrs. Harry S. Scott
 Dr. Henry W. Scott
 Marcella C. Sedgley
 Albert Seligson
 Mr. and Mrs. R. H. Shainwald
 Mr. and Mrs. R. S. Shainwald

Mrs. Nelson T. Shaw
 Fred R. Sherman
 Mr. and Mrs. Ray Simonds
 R. O. Simon
 Mrs. Norman J. Sinclair
 Mrs. Edgar Sinton
 Genevieve Six
 Charles W. Slack
 Mrs. Leon Sloss
 Judge and Mrs. M. C. Sloss
 Stanley C. Smallwood
 Edward J. Smiddy
 Mr. and Mrs. Charles Watt Smith
 Delancey Smith
 Jack Soderlund
 George Willard Somers
 Mr. and Mrs. Herbert L. Sommer
 Fred H. Spiess
 Mrs. E. B. Stanwood
 G. A. Starkweather
 Glen C. Stater
 Mrs. Harold S. Stein
 Ralph J. A. Stern
 Mrs. Sigmund Stern
 Claude Albon Stiehl
 Dr. John Philip Strickler
 John Robert Strickler
 Benka Strickler
 Lieut. C. W. Sudderth
 Walter H. Sullivan
 E. J. Sultan
 Bert O. Summers
 Mrs. Alfred Sutro
 Louis Sutter
 Ernest J. Sweetland
 Mrs. Andrew B. Talbot
 Dr. W. R. Taylor
 Charles Tesseyman
 George C. Thierbach
 B. Wade Thompson
 Mrs. Myron I. Thomas
 William Timson
 C. R. Tobin
 Mrs. Edward Topham, Jr.
 Mr. and Mrs. Ernest J. Torregano
 Dr. and Mrs. H. G. Trimble
 Mrs. Alfred Tubbs
 Mr. and Mrs. Nion R. Tucker
 Mr. and Mrs. Daniel Volkmann
 Dr. E. P. M. Von Gehren
 Mrs. Norman L. Waggoner
 George Wagner
 Mrs. Willis J. Walker
 Morton Wallace
 Whitney Warren
 Mr. and Mrs. Karl C. Weber
 Michel D. Weill
 Lieut. Comdr. Nat. S. West
 Dr. and Mrs. H. M. Weyrauch
 Anna Louise White
 Bonnie Whitcomb
 Lieut. and Mrs. Fred Whitman
 William A. P. White
 George B. White
 Mrs. Millard C. White
 Mrs. Frederick A. Wickett
 Robert L. Wiel
 Mr. and Mrs. Brayton Wilbur
 Charles T. Williams
 Mrs. Selden Williams
 Stephen Williams
 Lt. W. F. Willmette
 Mrs. J. L. Wolf
 Mr. and Mrs. Harold L. Wright
 Barbara Young
 Dwayne G. Young
 Mrs. V. Zaruba
 J. D. Zellerbach
 Edgar T. Zook
 Kenneth C. Zwerin

BUY WAR BONDS AND STAMPS



ALBERT DAINI

Distinctive

DRAPERIES

UPHOLSTERING

This table as illustrated
is one of our own creations
made in our own shop.

1529 PINE STREET NEAR POLK • ORDWAY 6316

RUSSIAN *Atmosphere*

RUSSIAN *Music*

RUSSIAN *Food*

BALALAIKA

Russian Restaurant

960 Bush St., S.F.
Tel. OR. 8976

Cocktails · Dinners
Gypsy Music

D. Dee, Manager



Alioto's FISH GROTTO

Phil Rubino
Manager

STEAKS - CHOPS

ALSO SERVED



No. 8 Fisherman's Wharf
San Francisco

Open till 2 a.m.
Saturdays 3 a.m.

SAN FRANCISCO OPERA GUILD, INC.

MRS. ROGER D. LAPHAM, *Chairman*

MRS. JOHN PHILLIP COGHAN, JR., *Vice-Chairman*

MRS. FREDERICK WHITMAN, *Secretary*

MRS. STANLEY POWELL, *Vice-Chairman*

MR. JERD SULLIVAN, *Treasurer*

Members

- Mrs. Lloyd S. Ackerman
Mr. and Mrs. Arthur C. Adams
Mr. and Mrs. C. Edgar Adams
Mrs. John S. Adler
Mrs. Alexander Albert
Mrs. Douglas Alexander
Mrs. Wallace M. Alexander
Miss Edith W. Allyne
Miss Lucy H. Allyne
Mrs. R. M. Alvord
Mr. T. E. Ambrose
Mrs. Berrien Anderson
Miss Margaret Andrews
Mrs. Leonora Wood Armsby
Miss Lillian Armsby
Mr. Noel T. Arnold
Dr. Charlotte C. Baer
Mrs. Horace S. Baker
Mrs. George Washington Baker, Jr.
Mrs. William P. Baker
Mrs. Edward F. Barron
Mrs. R. M. Barthold
Mrs. Edward Otis Bartlett
Mrs. F. Bauden
Mrs. Samuel Bauer
Mrs. Charles Beardsley
Mr. S. D. Bechtel
Mrs. Julian Palmer Beek
Dr. Bernard C. Begley
Mrs. Reed J. Bekins
Mr. and Mrs. F. N. Belgrano, Jr.
Mrs. George Edwin Bennett
Mrs. G. Grace Benoist
Mrs. Charles H. Bentley
Mrs. Walter H. Bentley
Miss Jessie E. Benton
Mrs. Dikriam M. Berberian
Mrs. E. Bianco
Dr. and Mrs. Tholow Binkley
Mrs. James Arthur Bishop
Mrs. James Hall Bishop
Mrs. Charles N. Black
Miss Jennie M. Blair
Miss Phyllis Bliss
Mr. Louis Bloch
Miss Ruth V. Bloch
Mr. and Mrs. Charles R. Blyth
Mrs. Angus Gordon Boggs
Mr. and Mrs. Harold W. Bonner
Mrs. M. A. Bowen
Mrs. F. H. Bowles
Miss Louise A. Boyd
Miss Nina Boyle
Mrs. James Parks Bradley
Mrs. John D. Bradley
Mrs. W. C. Bruns
Mrs. A. F. Bruns
Mrs. John N. Breeden
Miss Marie Brewer
Mrs. William Briggs
Mrs. L. H. Brinck
Miss Bogardus Brodt
Mrs. Julia Fox Brooke
Mr. Arthur M. Brown, Jr.
Mrs. Cabot Brown
Mrs. Hillyer Brown
Mr. and Mrs. James Brown
Mrs. Walter D. Brown
Dr. Walter H. Brown
Mr. Frank J. Brucato
Mrs. Starr Bruce
Mr. Leo Bruck
Mrs. B. J. Brun
Dr. Edward John Buckley
Mrs. Edward J. Buckley
Mr. and Mrs. F. Neil Buckley
Mrs. Edna W. Buckwalter
Mrs. William J. Bultmann
Mrs. Robert B. Burroughs
Mrs. Arthur B. Cahill
Mr. Lewis Callaghan
Dolores Calles
Dr. William Otis Calloway
Mr. George T. Cameron
Major C. J. Carey
Mr. Russell Carpenter
Mrs. N. Casenave
Mrs. John Casserly
Mrs. A. L. Chickering
Mr. Drew Chidester
Madame Clara
Mrs. Tobin Clark
Mr. R. A. Cleaveland
Mr. Newton Booth Coghill
Mr. John P. Coghlan
Mrs. John P. Coghlan
Mrs. John P. Coghlan, Jr.
Mrs. Betty Cohn
Mrs. Max Cohn
Mrs. Colbert Coldwell
Miss Persis H. Coleman
Mr. and Mrs. Waldo S. Coleman
Mr. H. D. Collier
Mrs. Jesse C. Colman
Mr. Joseph J. Coney
Miss Mary R. Conlin
Mrs. W. B. Cope
Mrs. B. Hardin Corbin
Dr. and Mrs. Frederick C. Cordes
Miss Mary Cowerd
Miss Mona Crellin
Mr. Templeton Crocker
Mr. William W. Crocker
Judge George E. Crothers
Mrs. John D. Crummey
Mrs. Emile F. Cuenin
Mrs. Leon Cuenin
Miss Peggy Cunningham
Miss Martha Curtis
Mr. and Mrs. O. K. Cushing
Mrs. Walter R. Cusick
Mrs. Chester Dahl
Mrs. Marie Hicks Davidson
Miss Florence Dean
Mrs. Charles J. Deering
Mrs. Frank P. Deering
Mrs. Georges deLatour
Mrs. S. T. DeLee
Mrs. Arthur J. DeLormier
Mrs. Frank H. Denman
Mr. and Mrs. John Michael Desch
Mrs. Donald Dickey
Mrs. B. J. Dietrich
Mrs. Lloyd W. Dinkelspiel
Mrs. Samuel W. Dinkelspiel
Mr. and Mrs. Dewey Donnell
Miss Katharine Donohoe
Mrs. Warrington Dorst
Mrs. Paul M. Downing
Mrs. Frank B. Dray
Mrs. H. B. Drescher
Mrs. Lambert Dunbar
Mrs. Charles Dunpy
Mrs. Dunn Dutton
Mrs. Charles R. Eaton
Dr. Muriel E. Edwards
Mr. C. Wesley Edwards
Mr. Philip Ehrlich
Mrs. Alfred Ehrman
Mrs. Sidney Ehrman
Miss Lucile Eising
Mrs. Milton H. Esberg
Miss Marian W. Ewes
Mrs. Harold E. Faber
Mr. Lionel B. Feigenbaum
Mrs. Walter Filer
Mrs. Marshall Fisher
Mrs. R. M. Fitzgerald
Mrs. William M. Fitzhugh
Mr. Charles Flammer
Mrs. Herbert Fleishhacker, Jr.
Mrs. Mortimer Fleishhacker, Jr.
Mrs. James L. Flood
Mrs. B. C. Flood
Mrs. John F. Forbes
Mrs. Bernard W. Ford
Mr. and Mrs. Edward T. Ford
Mrs. W. Parmer Fuller, Jr.
Mrs. W. Parmer Fuller III
Mrs. Reed Funsten
Mr. Angelo Fusco
Mrs. Nellie Gaffney
Mrs. Vallejo Gantner
Mrs. Alfred Ghirardelli
Mr. D. Lyle Ghirardelli
Dr. and Mrs. Thomas A. Gibson
Miss Amelie Gier
Mrs. Frank Girard
Dr. Frank Girard
Mrs. Harry F. Gittings, Jr.
Mrs. J. H. Glide
Mrs. Henry Goldstein
Miss Lutie Goldstein
Mrs. A. H. Goldstone
Mr. Jack Gomperts
Miss Jane Goodfellow
Miss Lorraine C. Goodman
Mrs. Joseph Grace
Mrs. James Graham
Mrs. Joseph D. Grant
Mrs. Spencer Grant
Mrs. Horace Gray
Mr. and Mrs. Stuart N. Greenberg
Mrs. Frederick L. Greenlee
Mrs. Berthold Guggenhome
Mrs. Gustav Gumpel
Mrs. Morgan A. Gunst
Miss Rhoda Haas
Mrs. Walter A. Haas
Mrs. Walter A. Hass, Jr.
Miss Ethel Hager
Mrs. Randolph Hale
Mr. R. B. Hale
Mrs. William L. Halfpenny
Mrs. John Lindsay Hanna
Mrs. Richard J. Hanna
Mrs. Robert D. Harden
Mrs. L. W. Harris
Mrs. Russell Hastings
Mrs. Eulystus Lyon Hayes
Mrs. Timothy Hayes
Mr. A. W. Hazen
Mrs. Richard Heimann
Mrs. E. S. Heller
Mr. Walter D. Heller
Mr. Walter S. Heller
Mrs. Frederick Hellman
Mrs. I. W. Hellman
Mrs. Barbara Urba Hendel
Mrs. Wellington S. Henderson
Mrs. A. W. Hewlett
Mr. Benjamin H. Hicklin
Miss Ann Hill
Mrs. Fentress Hill
Mrs. Harold Hill
Mrs. Harry Hill
Mrs. Stanley Hiller
Mr. and Mrs. Harry H. Hilp
Mrs. A. F. Hockenbeamer
Mrs. Clifford P. Hoffman
Mrs. Osgood Hooker
Mrs. Robert Hotie
Mrs. Thomas Carr Howe, Jr.
Miss Mina B. Hughes
Mrs. Thomas R. Hughes
Miss Betty V. Humphreys
Mrs. T. B. Hunter
Marian P. Huntington

OPERA GUILD MEMBERS—Continued

<p>Mrs. John Power Hutchins Mrs. James Irvine Mrs. James Jackson Dr. S. Nicholas Jacobs Mr. R. J. Jansen Mr. Harold I. Johnson Mrs. Otis Johnson Mrs. Walter S. Johnson Mrs. Ivar Johnson Mrs. Clarence Loran Johnston Dr. Herbert G. Johnstone Mrs. Elizabeth Jorgeneel Mrs. Henry Kaiser Mr. Ben C. Keator Mrs. Charles J. Keenan Mrs. Edward D. Keil Mrs. T. Henshaw Kelly Mr. Charles Kendrick Mrs. Easton Kent Mrs. Donald Kieffer Mrs. Henry S. Kiersted Mrs. W. K. Kilpatrick Mr. Percy L. King Mr. A. J. Kirkpatrick Mrs. J. R. Kleinjung Mrs. John B. Knox Miss Caroline Korbel Mrs. Abraham Koshland Mrs. Daniel Koshland Mrs. Marcus S. Koshlund Miss Frances Kosta Mr. Frederick J. Koster Mr. Gus Kroesen Mrs. H. N. Kuechler, Jr. Esther Kuenz Mrs. Breck Lamont Mrs. Albert George Lang Mrs. Philip V. H. Lansdale Honorable and Mrs. Roger D. Lapham Mrs. Roger D. Lapham, Jr. Mrs. Charles G. Lathrop Mrs. T. M. Lauridsen Mrs. Claude Lazard Miss Rena Lazelle Mrs. A. Lendle Mrs. Louis Lengfeld Mr. Felix A. Lenhart Mrs. John A. Lesoine Miss Elvira LeStrange Mrs. Azro N. Lewis</p>	<p>Mrs. Sidney Liebes Frances Marie Lilienthal Mr. Philip N. Lilienthal, Jr. Mr. F. L. Lipman Mr. R. L. Litchfield Miss Edith Livermore Mrs. Norman Livermore Mr. Carl Livingston Mr. and Mrs. James K. Lothead Mrs. Dan E. London Miss Ann M. Lovejoy Miss Louise Lovell Mrs. W. Palmer Lucas Miss Myrtle Lugg Mrs. Thomas P. Mailliard Mrs. Decker McAllister Mrs. Atholl McBean Mrs. T. R. McCarron Mr. A. M. Carty Mrs. W. H. McCormick Mrs. John McGaw Mrs. D. E. McLaughlin Mrs. George P. McNear Mrs. Errol MacBoyle Mr. and Mrs. Grover A. Magnin Dr. Ergo A. Majors Mrs. Vivian Mann Mrs. Randolph W. Martenet Mrs. Charles O. Martin Mrs. Water Martin Mrs. Charles Mayer Miss Evelyn Mendesolle Mrs. William G. Merchant Mrs. R. P. Merillion Mr. and Mrs. Gaetano Merola Mrs. H. C. Merritt, Jr. Mrs. John B. Metcalf Mrs. Julian J. Meyer Mrs. Robbins Milbank Mr. C. O. G. Miller Mrs. Harry East Miller Mrs. Earl D. Minton Pvt. Franklin Mittau Mr. Edward F. Moffatt Mr. J. K. Moffitt Mrs. E. R. Mogel Mrs. L. Mogel Mrs. Kenneth Monteagle Mr. Kenneth Monteagle Mr. and Mrs. Paige Monteagle Mr. Frederick H. Montgomery</p>	<p>Mr. George Montgomery Mr. Charles Moore Mrs. Joseph A. Moore Mrs. Ramsay Moran Mrs. James W. Morgan Dr. Grace McCann Morley Mrs. Philip C. Morse Miss Alicia Mosgrove Dr. W. H. Murphy Miss Laura Musto Mrs. A. N. Nathan National Broadcasting Co. Mrs. Hans Nelson Miss Julia M. Neppert Mrs. John Archibald Newcomb Mr. John Francis Neylan Mr. J. LeRoy Nickel, Jr. Mrs. William H. Noble Mrs. William H. Nolan Miss Anna C. O'Brien Mrs. Mary Obujen Mrs. Jack Okell Miss Margaret Olcese Mr. Benjamin J. Older Mrs. A. Leslie Oliver Mrs. Warren Olney, Jr. Mrs. Julius Oppenheimer Mrs. William H. Orrick Mr. Charles R. Page Lorriene Parisen Miss Barbara Parrott Mr. Philip P. Paschel Mrs. Oscar Butler Perry Mrs. Herman Phleger Mr. and Mrs. G. Pisani Mr. Aram Poladian Mrs. Wesley A. Pomeroy Mrs. George A. Pope, Jr. Mrs. Kenneth Pope Mrs. Hugh B. Porter Mrs. M. C. Porter Mrs. Ashton Potter Mr. J. Sheldon Potter Miss Eva Powell Mrs. Jerome V. Powell Mrs. Stanley Powell Mr. and Mrs. Stanley Powell, Jr. Mr. Walter G. Preddy Mrs. John Raggio Dr. Ralph Arthur Reynolds Mrs. H. A. Richardson</p>
--	--	--

ON THE RECORD

THE MUSIC YOU LOVE TO HEAR
YOUR FAVORITE OPERA, SYMPHONY
AND POPULAR NEW RELEASES

BALDWIN PIANO CO.

Record Department

310 Sutter Street

SUtter 8500

PENINSULA BOX OFFICE

"Choice seats for all attractions"

338 University Ave.
Palo Alt. 22122

Ben Franklin Hotel
San Mateo 43348

1454 Burlingame Ave.
Burlingame 31232

OPERA GUILD MEMBERS—Continued

Miss Gertrude Richter Miss Margarete Riegg Mrs. Walter Riegger Mrs. James W. Roberts Mrs. John T. Roberts Mr. and Mrs. Hall Roe Mrs. Nathan Rogers Mrs. Arline Miller Rolkin Mr. Robert A. Roos Mr. John N. Rosekrans Mrs. Charles W. Rosenbaum Mrs. Angela Wing Roth Mrs. William P. Roth Mrs. Dorothy Royce Mr. F. W. Rubke Mrs. Henry Potter Russell Miss Pauline E. Ryder Miss Virginia Ryder Mr. Marcus L. Samuels Mrs. Karl Schaefer Mr. and Mrs. Carl Schauby Mrs. Rudolph Schilling Mr. George B. Schirmer Mr. Nat Schmulowitz Miss Violet G. Schoning Mr. Albert Schwabacher Mr. James H. Schwabacher Mrs. Louis A. Schwabacher Mrs. Bert C. Scott Mr. H. S. Scott Mr. Walter Sedgley Mr. and Mrs. Bruce Selfridge Mrs. Richard H. Shainwald Mrs. R. S. Shainwald Mrs. Nelson Towne Shaw Mrs. A. H. Shearer Mrs. Fred R. Sherman Mrs. Francis Shook Mrs. Henry J. Siegler Mrs. Stauffer Sigall	Mrs. Rose Silver Mr. R. O. Simon Mr. Charles W. Slack Mrs. Leon Sloss, Jr. Mrs. Leon Sloss Mrs. Louis Sloss Judge and Mrs. M. C. Sloss Mrs. George D. Smith Mrs. Josephine A. Smith Mrs. Melville L. Smith Mrs. Russel Smith Captain G. W. Somers Soroptimist Club Mrs. Robert Gordon Sproul Mrs. E. B. Stanwood Miss Gynne Stern Mrs. Sigmund Stern Mrs. Lawrence Strassburger Mr. and Mrs. Jerd Sullivan Mrs. Alfred Sutro Mrs. John A. Sutro Mrs. Oscar Sutro Mrs. Oscar Sutro, Jr. Mr. Louis Sutter Mr. Henry F. Swift Mrs. Alfred B. Swinerton Mrs. Powers Symington Mrs. Andrew Talbot Miss June Tanzer Mrs. David Armstrong Taylor Mr. George C. Thierbach Mrs. F. F. Thomas, Jr. Mrs. Myron I. Thomas Mrs. Miller Thomlinson Barbara B. Thompson Mrs. Julian Thorne Mr. W. G. Thornton Miss Ida Thrans Mrs. M. C. Threlkeld Mrs. Joseph Tobin Mrs. Edward Topham, Jr.	Mr. Ernest J. Torregano Miss Anna O. Touvinen Mrs. James W. Towne Dr. and Mrs. Harold Trimble Mrs. Henri W. Trumbull Mrs. Alfred S. Tubbs Mrs. Nion Tucker Mrs. John R. Upton Mrs. Sidney M. Van Wyck Mr. and Mrs. Reginald L. Vaughan Mr. Paul Verdier Mrs. Walter Vojon Dr. C. E. Voigt Mrs. Daniel Volkmann Mrs. Norman Waggoner Mr. George Wagner Mrs. Richard Walker Mrs. Ward Walkup Mr. Morton Wallace Mrs. Clarence R. Walter Mrs. John I. Walter Mrs. Lingan Warren Mr. Michel D. Weill Mrs. Dorothy Weiss Mrs. Millard C. White Mrs. Frederick C. Whitman Mrs. F. A. Wickett Mrs. Brayton Wilbur Mr. Stephen Williams Mrs. W. F. Willimette Mrs. Dean Witter Dr. Dorothy A. Wood Mrs. Theodore Wores Miss Barbara Young Mrs. Clarence Young Mrs. V. Zaruba Mrs. Harold I. Zellerbach Mr. J. D. Zellerbach Mr. Edgar T. Zook
--	---	---

FIRE NOTICE

There are sufficient exits in this building to accommodate the entire audience. The exit indicated by the lighted "Exit" sign nearest your seat is the shortest route to the street. In case of fire please do not run—**Walk through that exit.**




For extraordinary performance, magnificent musical tone and authentic cabinet design, remember this name when you buy your new radio-phonograph with FM.

Freed-Oisemann

"One of the world's great radio-phonographs"

FREED RADIO CORPORATION • NEW YORK, N. Y.

discoveries in beauty from the noteworthy H G White collection of exclusive giftware & antiques



The London Shop

352 SUTTER ST • SAN FRANCISCO • TELEPHONE EXBROOK 2408

CONTRIBUTORS TO 1945 SEASON

Amberg-Hirth
 Anglo California National
 Bank
 Constant J. Auger
 Baldwin Piano Co.
 Blum's
 Borden's Dairy Delivery Co.
 Bullock & Jones Co.
 City of Paris
 City Transfer & Storage Co.
 Columbia Concerts Inc.
 Davis-Schonwasser
 The Emporium
 Julius Eppstein Florists
 Fairmont Hotel
 Fox West Coast Agency
 Nelly Gaffney
 Granat Bros.

S. & G. Gump Company
 Hale Bros.
 Hastings Clothing Co.
 Joseph's Florist
 Juliettes
 KGO American Broadcasting
 Co. Inc.
 Carolyn Kelsey
 K. H. Lengfeld
 H. Liebes & Company
 Livingston Bros.
 Mr. and Mrs. Grover A.
 Magnin
 I. Magnin & Company
 Joseph Magnin Company
 Maison Mendessolle
 Mark Hopkins Hotel
 Merrill's Drug Centers

Musicians Union, Local No. 6
 O'Connor, Moffatt & Co.
 Palace Hotel
 Pisani Printing & Publishing Co.
 Podesta & Baldocche
 Edward K. Pond
 Ransohoffs
 Roos Bros.
 Schneider Bros. Inc.
 Sherman, Clay & Co.
 Shreve & Co.
 Sommer & Kaufmann
 Standard of California
 St. Francis Hotel
 Weinstein Co. Inc.
 White House
 Williams & Berg Co.
 Yellow Cab Company

GIFTS *that say "I'm thinking of YOU"*

California flowers . . . exquisitely reproduced in hand made ceramic pin and earring sets . . . Hand blocked smocks for house and Victory Garden wear . . . Good luck Pixies . . . Unusual, worthwhile gifts.

THE NATALIE SHOP

12 TILLMAN PLACE
 Bet. Sutter & Post Sts.
 Off Grant Avenue . . .
 Phone: DOuglas 1502

STEWART BURRWELL BRADY

Scholarship Pupil of DINO BORGIOLO, London, England
Vocal Psychiatrist

644 Powell Street, San Francisco

Telephone DOuglas 0556

ELIZABETH WILLS

Voice Building — Coaching

Teacher of
 Florence Alba

San Francisco

Studio—701 Pine Street
 Telephone—SUtter 1584

ALITA ARRICK

TEACHER OF PIANO
 CLASSICAL COURSE

Pupils Prepared for Recitals,
 Vocal Coaching and
 Accompanying

163 Sutter Street EXbrook 4652
 San Francisco 4, Calif.

STELLA SPRAGUE BEST VOICE

Italian Method • Bel Canto

Pupils prepared for Grand Opera and Concert
 2845 Van Ness Ave. GRaystone 2786

CITY TRANSFER CO.

SERVES SAN FRANCISCO OPERA CO.

WHY NOT YOU?

MOVING - STORAGE - SHIPPING

333 TURK STREET PRespect 3060

HANCOCK BROS.

ROLL AND RESERVED SEAT TICKETS



25 JESSIE STREET DOuglas 2191
 San Francisco 5, California



PISANI PRINTING & PUBLISHING CO., 700 MONTGOMERY, S. F.

**Can this service
help me?**

Many a man, engrossed in his business or profession, has found a Trust Account with his bank helpful.

Under such an arrangement, the bank takes over and handles for its client the many time-consuming details of his *personal* investments. *Ask about this service.*

TRUST DEPARTMENT

**Wells Fargo
Bank & UNION TRUST CO.**

SAN FRANCISCO

Established 1852

Member F. D. I. C.

a Perfect Evening

Start with Chesterfields and you can add only orchids and the theatre for a perfect evening. Chesterfield's Right Combination World's Best Tobaccos always gives you smoking pleasure at its best. Chesterfields satisfy because they're *milder... cooler... better-tasting.*

CHESTERFIELD
 RIGHT COMBINATION WORLD'S BEST TOBACCO