

Il Segreto di Susanna

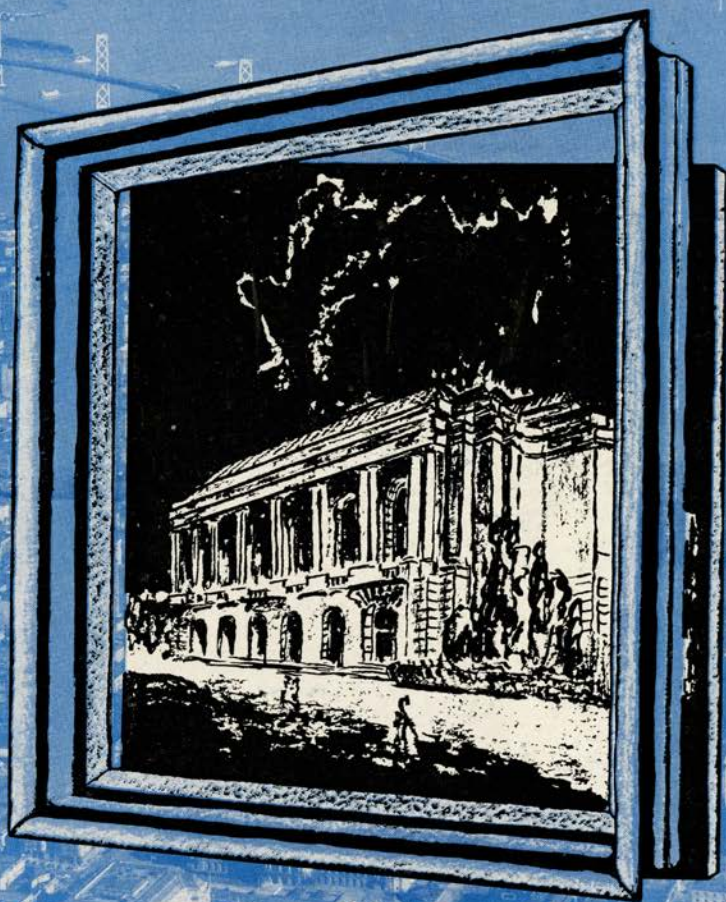
1944

Thursday, October 19, 1944 8:30 PM

SFO_PUB_01_SFO_1944_15

Publications Collection

San Francisco Opera Archives



Twenty-second Annual Season

SAN FRANCISCO OPERA ASSOCIATION

GAETANO MEROLA, *General Director*

WAR MEMORIAL OPERA HOUSE

SEPTEMBER 29 TO OCTOBER 28, 1944

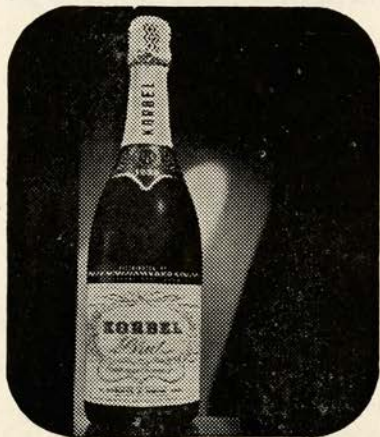


G. Adrian

ORIGINAL

Gown Salon

Third Floor



It Stands Alone

KORBEL BRUT IS TOPS IN AMERICAN CHAMPAGNE

Magazines which reach the most sophisticated audience in the United States unanimously give first place in American Champagnes to KORBEL BRUT
WE didn't say it first! THEY DID!

"THE BEST AMERICAN CHAMPAGNE to date is KORBEL BRUT. Our guess is anyone would think it was imported."
—Harper's Bazaar, February, 1941.

"PROBABLY THE MOST CHAMPAGNE-LIKE domestic wine is KORBEL BRUT."
—Cue Magazine, December 20, 1940.

"THE OUTSTANDING AMERICAN CHAMPAGNE to date is KORBEL BRUT."
—Town and Country, February, 1941.

"EXTREMELY ENJOYABLE, bone-dry and clean-tasting."
—The New Yorker, March 15, 1941.

"AMONG THE FEW FINE CALIFORNIA CHAMPAGNES IS KORBEL BRUT—a special cuvee which has been made as dry as the dryest Champagnes for the English market."
—St. Regis, Peacock Alley, The Ambassador, Plaza En Passant, The Savoyard, The Ritz Carlton, The Hampshire, The Sherry-Netherlands, Pierrot, January, 1941.

K O R B E L **BRUT** **ROUGE**
 SEC **PINK**

Distributed by

TRADERS DISTRIBUTING CO.
314 FRONT STREET, SAN FRANCISCO, CALIFORNIA

21 BRANDS, INC.

17 E. 52nd ST., NEW YORK CITY

Impartial Information
Thorough Analysis
Experienced Judgment
Complete Facilities
....for Investors



DEAN WITTER & CO.

NEW YORK STOCK EXCHANGE

SAN FRANCISCO STOCK EXCHANGE

RECORDS of all the music you want at Sherman, Clay's many Pacific Coast music stores. Records of operas and operatic selections, of symphonies, of artists of today and yesterday. Records of dance bands sweet and hot, mood music of every kind. Records for the young set, for the sophisticates, for music lovers, for sentimentalists. Records for children, for students . . . records of every character and description here for you at Sherman, Clay & Co.



Sherman  Clay

8 PACIFIC COAST STORES SAN FRANCISCO OAKLAND
SACRAMENTO SAN JOSE • FRESNO PORTLAND SEATTLE

Pedro Domecq wears a White Tie

No formal dinner party would be right without white ties and formal gowns. Nor would it be quite correct without wine—a glass of fine Amontillado, Domecq's Selecto, with the soup, a table wine with the entree, and a mellow, golden cream Sherry, Domecq's Celebration Cream, with the dessert.

Ask your dealer to show you Pedro Domecq's range of Sherries. Your cellar without a noble Sherry like Domecq would be as incomplete as your wardrobe without evening clothes.

COMEX WINE & SPIRITS, INC.

New York City

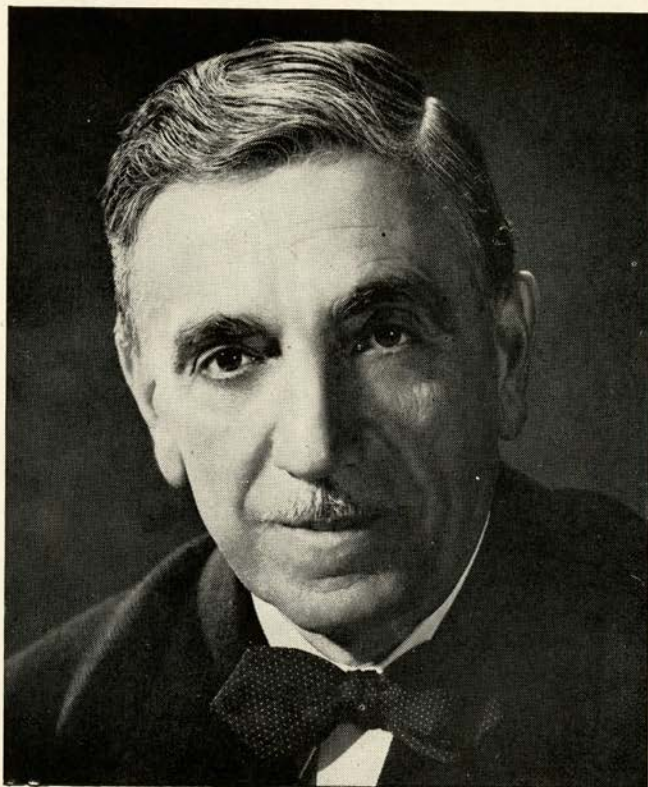
San Francisco

Bottled in Jerez, Spain. Alcohol 18 to 20% by volume



COCKTAIL BAR IN BASEMENT PROMENADE
SERVICE ALSO ON DRESS CIRCLE AND MEZZANINE

Served at the Opera House BUFFET



★ ★ ★ ★ ★ ★ ★ ★ ★ ★ ★ ★ ★ ★ ★ ★

GAETANO MEROLA

GENERAL DIRECTOR

This is the San Francisco Opera Company's 22nd Annual Season, its third war time season, and it is fitting that its friends pause a moment to take stock of the past and the present.

We can well be proud of twenty-two unbroken years of opera. On October 15, 1932, the War Memorial Opera House was dedicated by the opening performance of the 10th Season.


In the fall of 1941, the San Francisco Opera Company's annual tours to Sacramento, Los Angeles and Pasadena were extended to include Portland and Seattle.

It is estimated that since the inception of the San Francisco Opera Company twenty-two years ago, approximately 3,000,000 persons have attended its performances.

This season, notwithstanding war time conditions, the Opera Association will achieve its long sought desire to be truly the source of grand opera enjoyment of the entire west, through the broadcast of fourteen performances over thirty-eight stations of the Don Lee Mutual Broadcasting System.

We are grateful to Safeway Stores, the sponsor of these broadcasts, and we are sure that millions of listeners will join us in this formal expression of appreciation.

SAN FRANCISCO OPERA ASSOCIATION



AS SEEN IN

Vogue

FOREVER YOURS...the matchless beauty and distinction of your
Granat Perfect Blue-White Solitaire Diamond, with its handmade
Tempered Mounting,*as seen In VOGUE. Choose from a nationally
renowned collection of these exclusive creations...\$100 to \$1,000
and more...at America's Largest Manufacturing Retail Jewelers.

★ TRADE MARK OF GRANAT BROS

Granat Bros
SHREVE TREAT & EACRET

O F F I C E R S



★ ★ ★ ★ ★ ★ ★ ★ ★ ★ ★ ★ ★ ★ ★ ★
KENNETH MONTEAGLE
PRESIDENT

MRS. STANLEY POWELL
VICE-PRESIDENT

ARTHUR MERRILL BROWN, JR.
VICE-PRESIDENT

CHARLES R. BLYTH
VICE-PRESIDENT

GEORGE T. CAMERON
TREASURER

EDWARD F. MOFFATT
SECRETARY

BOARD OF DIRECTORS

GEORGE WASHINGTON BAKER, JR.
CHARLES R. BLYTH
ARTHUR MERRILL BROWN, JR.
GEORGE T. CAMERON
WILLIAM W. CROCKER
MORTIMER FLEISHHACKER

TIMOTHY HEALY
KENNETH MONTEAGLE
JOHN FRANCIS NEYLAN
MRS. STANLEY POWELL
MRS. HENRY POTTER RUSSELL
NION R. TUCKER

EXECUTIVE STAFF

PAUL POSZ
BUSINESS MANAGER

HOWARD G. HANVEY - CURRAN SWINT
PUBLICITY

ARTHUR FRAHM-LALIA DECKER-PHYLLIS AMATI
TICKET SALES

EVELYN CROCKETT-GERALD G. ROSS
OFFICE SECRETARIES



Willat **COLD PERMANENT WAVE**

HEATLESS PERMANENT WAVE, 1022 FOLSOM ST., SAN FRANCISCO 3, CALIF.

Chic . . . is the word for it.
a willat cold permanent wave

Discriminating San Francisco women know that a Willat Cold Permanent Wave will help their hair to look its very smartest on First Nights at Theatre and Opera. Enjoy this cold permanent wave the next time you visit your favorite beauty salon and have a complimentary test curl to show you just how lovely your hair will look with a Willat Cold Permanent Wave.

FOR SOFT, LOVELY CURLS TRY A WILLAT WANDA WAVE. TRULY A
MIRACLE WAVE...SO LOVELY, SIMPLE AND QUICK. WILLAT CIRCLETTE
WAVE. THE DELUXE WAVE THAT'S SPRAYED INTO YOUR HAIR.

BOARD OF GOVERNORS

GEORGE WASHINGTON BAKER, JR.	REUBEN B. HALE	MRS. JOHN FRANCIS NEYLAN
P. A. BERGEROT	MRS. LAWRENCE W. HARRIS	JOHN FRANCIS NEYLAN
CHARLES R. BLYTH	J. EMMET HAYDEN	ETTORE PATRIZI
J. BRENDAN BRADY	TIMOTHY HEALY	RALPH L. PHELPS
H. SEWALL BRADLEY	EDWARD D. KEIL	MRS. M. C. PORTER
ARTHUR MERRILL BROWN, JR.	CHARLES H. KENDRICK	MRS. STANLEY POWELL
GUIDO CAGLIERI	MRS. MARCUS S. KOSHLAND	STANLEY POWELL
MRS. GEORGE T. CAMERON	LEWIS A. LAPHAM	ANGELO J. ROSSI
GEORGE T. CAMERON	MRS. STINE LEIS	MRS. HENRY POTTER RUSSELL
CHARLES A. CHRISTIN	J. B. LEVISON	A. SBARBORO
TEMPLETON CROCKER	MISS EDITH LIVERMORE	FRED R. SHERMAN
WILLIAM W. CROCKER	M. E. LOMBARDI	PAUL SHOUP
GEORGE E. CROTHERS	MISS RUTH W. LORING	MRS. M. C. SLOSS
MRS. FRANK P. DEERING	MISS SALLIE MAYNARD	RALPH J. A. STERN
MISS MARY C. DUNHAM	WILLIAM GLADSTONE MERCHANT	MRS. SIGMUND STERN
SIDNEY M. EHRMAN	MRS. C. D. G. MILLER	MRS. DAVID ARMSTRONG TAYLOR
MRS. WILLIAM M. FITZHUGH	ROBERT W. MILLER	M. G. THREKELD
MORTIMER FLEISHHACKER	EDWARD F. MOFFATT	NION R. TUCKER
A. P. GIANNINI	KENNETH MONTEAGLE	RANDOLPH C. WALKER
RANDOLPH HALE	GUIDO MUSTO	WHITNEY WARREN, JR.



WAR MEMORIAL OPERA HOUSE

(OWNED AND OPERATED BY THE CITY AND COUNTY OF SAN FRANCISCO
THROUGH THE BOARD OF TRUSTEES OF THE WAR MEMORIAL)

BOARD OF TRUSTEES

GUIDO J. MUSTO PRESIDENT	CHARLES G. KLEUPFER VICE-PRESIDENT	WALTER A. LEONETTI
SIDNEY M. EHRMAN	DAN S. HEWITT	FELIX S. MCGINNIS
ALVIN GERLACK	J. BRUCE JONES	HARRY A. MILTON
WILBUR A. HENDERSON		RALPH J. A. STERN
EDWARD SHARKEY MANAGING DIRECTOR OF THE WAR MEMORIAL	IRA G. THOMPSON SECRETARY TO THE BOARD OF TRUSTEES	

Buffet Service in Basement Promenade and Dress Circle during all performances

LIBRETTOS AND OPERA GLASSES IN FOYER · HEAD SETS FOR THE DEAF ARE
AVAILABLE AT TABLE IN MAIN FOYER · ATTENDANT WILL CONNECT
WITH SEAT LOCATION UPON REQUEST · FOR LOST AND FOUND
INFORMATION, INQUIRE AT CHECK ROOM NO. 1
WILLIAM A. MEADE, DIRECTOR OF HOUSE SERVICE



AIR RAID PRECAUTIONS

The Opera House is "blacked out" and all facilities have been inspected and approved by Civilian Defense authorities. As an additional factor for your safety, trained Air Raid Wardens are on duty during performances
PLEASE OBEY ALL INSTRUCTIONS OF THE AIR RAID WARDENS

Rent
Exercycle
Electrically Operated
Relaxing Exercise

CALL
EXERCYCLE CO.
455 POWELL STREET
SAN FRANCISCO
YUkon 1456



SAN FRANCISCO OPERA COMPANY

GAETANO MEROLA
GENERAL DIRECTOR

ARMANDO AGNINI
STAGE AND TECHNICAL DIRECTOR

KURT HERBERT ADLER
CHORUS DIRECTOR

ETIENNE BARONE
ASSISTANT STAGE DIRECTOR

WILLAM CHRISTENSEN
BALLET MASTER

JESSIE KEENE
PRODUCTION SECRETARY



CONDUCTORS and ASSISTANTS

GAETANO MEROLA

PIETRO CIMARA

NADUM BLINDER
CONCERT MASTER

WILLIAM STEINBERG

KARL RIEDEL OTELLO CIRONI

ANTONIO DELL'OREFICE

GEORGE SEBASTIAN

KURT HERBERT ADLER

JULIUS HAUG
LIBRARIAN

ARTISTS

LICIA ALBANESE
SOPRANO

EVARISTO ALIBERTINI
BARITONE

LORENZO ALVARY
BASS

ALICE AVAKIAN
CONTRALTO

SALVATORE BACCALONI
BASS

ALTON BERNHARD
TENOR

ANTHONY BERTON
TENOR

LELIA CAMBI
SOPRANO

GEORGE CEHANDOVSKY
BARITONE

VIVIAN DELLA CHIESA
SOPRANO

HARRY DE LUGG
TENOR

ALESSIO DE PAOLIS
TENOR

LILY DJANEL
SOPRANO

PHILIP DOAN
TENOR

JOHN GARRIS
TENOR

GEORGIA GIANOPULOS
SOPRANO

HERTA GLAZ
CONTRALTO

CHARLES GOODWIN
BASS

PAUL GUENTER
BARITONE

MARGARET HARSHAW
CONTRALTO

ELMA HEITMAN
SOPRANO

MARY BELLE JACOBS
SOPRANO

FREDERICK JAGEL
TENOR

RAOUL JOBIN
TENOR

HELENE KARPELENIA
SOPRANO

CHARLES KULLMAN
TENOR

BRUNO LANDI
TENOR

KATHLEEN LAWLOR
SOPRANO

NEVART LEVON
SOPRANO

MAX LORENZINI
BARITONE

VIRGINIA MACWATTERS
SOPRANO

MARY HELEN MARKHAM
SOPRANO

BENJAMIN MARTIN
BARITONE

ROBIN NELSON
BARITONE

JAN PEECE
TENOR

IVAN PETROFF
BARITONE

EZIO PINZA
BASS

LILY PONS
SOPRANO

STELLA ROMAN
SOPRANO

W. VERNON SANDERS
BASS

ALLEN SCHMIDLING
TENOR

JOHN SHAFER
BARITONE

ROBERTO SILVA
BASS

RISE STEVENS
SOPRANO

GEORGE TALLONE
TENOR

HUGH THOMPSON
BARITONE

JOSEPH TISSIER
TENOR

CLARAMAE TURNER
CONTRALTO

FRANCESCO VALENTINO
BARITONE

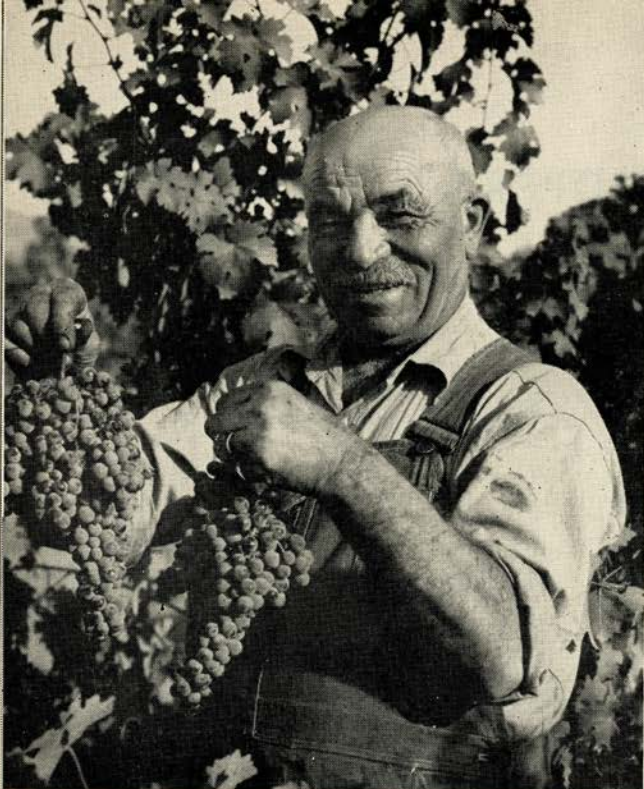
ALBERT VANNUCCI
TENOR

THELMA VOTIPKA
SOPRANO

FRED WAHLIN
BASS

LEONARD WARREN
BARITONE

EDWARD WELLMAN
BARITONE



Pierre, Foreman of Beaulieu Vineyard Number Two.

In the heart of Napa Valley, where soil and climate are congenial for the wine grape, the tradition of fine wine-making is being kept alive by the skill of Beaulieu vintners. Grapes of the finest, light-bearing varieties, allowed to develop in small casks and in the bottle, yield their delicate flavor to the fine wines of Beaulieu Vineyard. You will experience the same pride in serving them at your table, as the Beaulieu vintners take in making them.



Quality not Quantity

IS THE DISTINGUISHING MARK OF

Beaulieu Vineyard

BV

Beaulieu Vineyard

Vineyards and Winery: Rutherford, Napa Co., Calif.

Offices: 300 Montgomery St., San Francisco 4, Calif.

Since 1900

Pay for your American Citizenship • Buy War Bonds



PONS



JOBIN



ALBANESE



PINZA



ROMAN



KULLMAN



STEVENS
LANDI



PEERCE
GLAZ



DELLA CHIESA



☆
ARTISTS OF
San Francisco
OPERA COMPANY



San Francisco Tradition
BEFORE THE OPERA
... Dine in the exquisite Garden Court
AFTER THE OPERA
... Dance in the Rose Room to the music of
JAN SAVITT
and his orchestra
The PALACE HOTEL
EDMOND A. RIEDER, General Manager



This is one way to make clothes last
a long time.

A more practical method is to buy
things made of Bemberg* rayon.

*BEMBERG is the registered trade-mark of AMERICAN BEMBERG CORPORATION



WARREN



DJANEL



JAGEL



BACCALONI



HARSHAW



VALENTINO



SILVA
PETROFF



CEHANDOVSKY
MACWATTERS



ALVARY



☆
ARTISTS OF
San Francisco
OPERA COMPANY





Miss Ruby Asquith, Ballerina . . . S. F. Ballet Company

427 Post Street
(In the St. Francis Hotel)
YU kon 2061

Nicholas Johnston

MASTER PHOTOGRAPHER

CHORAL ENSEMBLE

MISSES		MESSRS.	
VIOLET AURAND	MARY BELLE JACOBS	EVARISTO ALIBERTINI	MAX LORENZINI
VIRGINIA BELLINGER	HELENE KARPELENIA	ALBERT BARRETT	AUGUST LORENZO
BIANCA BRUNI	LUCILLE KIRTLEY	ALTON BERNHARD	ALLAN LOUW
LORRAINE CALCAGNO	KATHLEEN LAWLOR	ANTHONY BERTON	GIULIO MANCINI
LELIA CAMBI	NEVART LEVON	LOUIS BRAUNSTEIN	BENJAMIN MARTIN
ELIZABETH CASE	DOROTHY MC INTYRE	SEBASTIAN CAMPAGNA	CARLO MANNUCCI
ELEANOR CORYELL	MARY HELEN MARKHAM	GALLIANO DANELUZ	ROBIN NELSON
SEDA DER GARABEDIAN	DELPHIA PHILLIPS	KENNETH DAVIES	LLOYD PEASE
BARBARA FRITZ	MARY RHETT	FLOYD DAVIS	WILLIAM PETERSON
GEORGIA GIANOPULOS	ELIZABETH JANE SANDERSON	LORENZO DE BEAL	W. VERNON SANDERS
DALE GOODWIN		AMERIGO DEL GRANDI	ALLEN SCHMIDLING
ELMA HEITMAN	MARY LEE SMITH	HARRY DE LUGG	BRUCE STEWART
ROSE AGNES HERSCH	VERA SOLAX	ARTHUR DE MASI	GEORGE TALLONE
ORTHELLA HUGHES	CLARAMAE TURNER	PHILIP DOAN	ALBERT VANNUCCI
		WILLIAM GORMAN	EDWIN VANNUCCI
		PAUL GUENTER	FRED WAHLIN
			EDWARD WELLMAN

DORA DE TANO, ACCOMPANIST

BALLET

RUBY ASQUITH, PREMIER DANSEUSE

EARL RIGGINS, PREMIER DANSEUR

SOLOISTS

PRINCIPAL DANCERS

MISSES	MISSES	MISSES	MESSRS.
DELENA CUMMINGS	LOIS TREADWELL	HOPE LINTZ	JOAQUIN FELCH
MATTLYN GEVURTZ	JOCELYN VOLLMAR	JYMMI RIEDEL	ROBERT HANSEN
ROSALIE PROSCH	ONNA WHITE	PEGGY SWIFT	RUSSELL HARTLEY
		WANA WILLIAMS	FRANK NELSON
		KATHERINE BEATTIE	ROBERT THORSON
		GINA CHAPPELL	

CORPS DE BALLET

MISSES	MISSES	MISSES	MISSES
GENEVIEVE ASONOVITCH	VERA GOLD	JACKIE LA FETRA	EDWINA NOBLE
BARBARA BADERTSCHER	ANTOINETTE GUHLKE	SALLY WHALEN	VIRGINIA POOLE
BONNIE BELL	HELENA HENDERSON	JUNE WILSON	JOAN VICKERS
JOAN BENNET	NANCY JACOBSON	FIALA MRAZ	

PRODUCTION

JULIAN DOVE—FRITZ KRAENKE
Scenic Artists

EARL MCGUIRE
Master Carpenter

CHARLES J. HOLZMUELLER
Master Electrician

JOHN T. HEAVEY
Master of Properties

FOR WAR MEMORIAL OPERA HOUSE

S. E. SIMMONS
Master Carpenter

EDWARD J. ZETTEL
Master Electrician

CLAUDE L. WAGGONER
Master of Properties

COSTUMES AND WIGS BY GOLDSTEIN & CO.

ALEXANDER AGNINI
Wardrobe Master

INEZ DODSON
Wardrobe Mistress

SUE MCGOWAN
Hairdresser

EVERETT MASON
Chief of Makeup

PROGRAM

PISANI PRINTING & PUBLISHING COMPANY, PUBLISHERS, DESIGNERS AND PRINTERS



ACME

..the beer with the
high I.Q. (It Quenches!)



ACME BREWERIES San Francisco • Los Angeles

Repertoire

REGULAR SERIES

- AIDA (*Verdi*) Friday Night, September 29, at 8:00
With Roman, Harshaw, Jagel, Warren, Pinza, Alvary, De Paolis, Votipka.
MEROLA, Conductor
- MARTHA (*von Flotow*) Tuesday Night, October 3, at 8:15
With Albanese, Glaz, Landi, Alvary, Baccaloni, Goodwin, Lawlor, Gianopoulos, Levon,
Cambi, Martin, Wahlin, Guenter, Doan, A. Vannucci. MEROLA, Conductor
- LAKME (*Delibes*) Friday Night, October 6, at 8:30
With Pons, Jobin, Cehanovsky, Silva, Glaz, Votipka, Karpelenia, Avakian, Garris, Martin,
De Lugg, Tallone. CIMARA, Conductor
- MANON (*Massenet*) Tuesday Night, October 10, at 8:30
With Albanese, Kullman, Valentino, Alvary, De Paolis, Cehanovsky, Levon, Bernhard,
Wellman. CIMARA, Conductor
- THE SECRET OF SUZANNE (*Wolf-Ferrari*) Friday Night, October 13, at 8:30
With MacWatters, Thompson, De Paolis. ADLER, Conductor
- followed by*
- SALOME (*Richard Strauss*)
with Djanel, Jagel, Harshaw, Shafer, Glaz, Garris, Alvary, De Paolis, Cehanovsky, Tis-
sier, Nelson, Wellman, Goodwin, Schmidling, Berton, Heitman. SEBASTIAN, Conductor
- FALSTAFF (*Verdi*) Monday Night, October 16, at 8:00
With Baccaloni, Landi, Petroff, Della Chiesa, Albanese, Harshaw, Glaz, Garris, De Paolis,
Alvary, Lawlor. STEINBERG, Conductor
- FAUST (*Gounod*) Wednesday Night, October 18, at 8:00
With Jobin, Pinza, Della Chiesa, Warren, Glaz, Votipka, Cehanovsky.
STEINBERG, Conductor
- THE MASKED BALL (*Verdi*) Friday Night, October 20, at 8:00
With Roman, Peerce, Warren, Harshaw, MacWatters, Alvary, Silva, Cehanovsky, Tallone,
Lorenzini. STEINBERG, Conductor
- LES CONTES D'HOFFMAN (*Offenbach*) Tuesday Night, October 24, at 8:15
With Jobin, Glaz, MacWatters, Djanel, Albanese, Pinza, Valentino, Cehanovsky, Alvary,
Turner, De Paolis, Tissier, Garris, Goodwin, Wellman, Sanders. MEROLA, Conductor
- CARMEN (*Bizet*) Friday Night, October 27, at 8:00
With Stevens, Kullman, MacWatters, Valentino, Alvary, Votipka, Avakian, Cehanovsky,
De Paolis. SEBASTIAN, Conductor

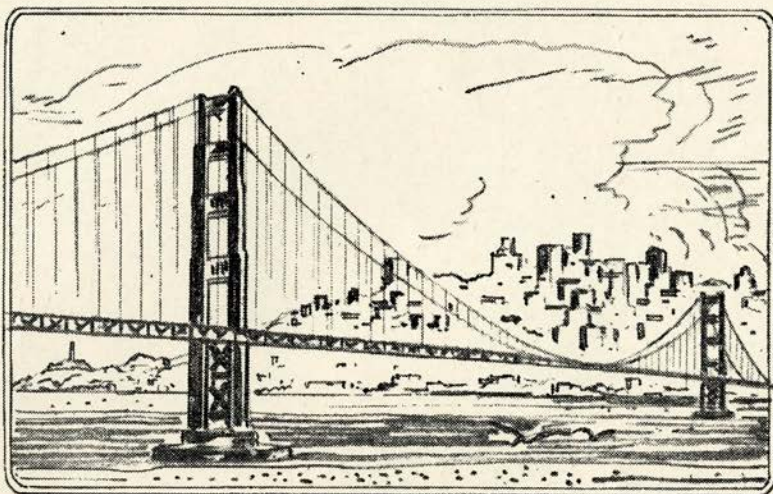
POPULAR SERIES

- LA BOHEME (*Puccini*) Thursday Night, October 5, at 8:30
With Albanese, MacWatters, Kullman, Valentino, Pinza, Cehanovsky, Baccaloni, Alibertini,
Lorenzini, Jacobs. MEROLA, Conductor
- LUCIA DI LAMMERMOOR (*Donizetti*) Wednesday Night, October 11, at 8:15
With Pons, Peerce, Alvary, Petroff, Votipka, Garris, Tissier. CIMARA, Conductor
- AIDA (*Verdi*) Sunday Afternoon, October 15, at 2:15
With same cast as in the Regular Series performance.
- THE SECRET OF SUZANNE (*Wolf-Ferrari*) Thursday Night, October 19, at 8:30
With same cast as in the Regular Series performance.
- followed by*
- SALOME (*Richard Strauss*)
With same cast as in the Regular Series performance.
- FALSTAFF (*Verdi*) Thursday Night, October 26, at 8:00
With same cast as in the Regular Series performance.

EXTRA PERFORMANCES

- LA FORZA DEL DESTINO (*Verdi*) Sunday Afternoon, October 1, at 2:15
With Roman, Jagel, Warren, Pinza, Baccaloni, Glaz, Votipka, Alvary, De Paolis, Cehanovsky.
MEROLA, Conductor
- MARTHA (*von Flotow*) Sunday Afternoon, October 8, at 2:30
With same cast as in the Regular Series performance. RIEDEL, Conductor
- RIGOLETTO (*Verdi*) Tuesday Night, October 17, at 8:15
With Warren, Pons, Peerce, Silva, Glaz, Cehanovsky, Nelson, Wellman, De Paolis, Votipka,
Markham, Lawlor. CIMARA, Conductor
- MANON (*Massenet*) Sunday Afternoon, October 22, at 2:30
With same cast as in the Regular Series performance.
- LES CONTES D'HOFFMANN (*Offenbach*) Saturday Night, October 28, at 8:15
With same cast as in the Regular Series performance.

THE EXTRA PERFORMANCES OF "MANON" AND "RIGOLETTO" ARE OPERA ASSOCIATION
CONCERT ATTRACTIONS



THE METROPOLIS
of the
FUTURE

War-time activities keep the Port of San Francisco alive and humming today.

Let us all cooperate to keep the San Francisco Bay Area the industrial center of the West after the war.



THE SAN FRANCISCO BANK

SAVINGS *Incorporated Feb. 10, 1868* TRUST

Member Federal Deposit Insurance Corporation

SEVEN OFFICES . . . EACH A COMPLETE BANK

PARKER S. MADDUX, *President*

THE CONCERT DIVISION OF THE
SAN FRANCISCO OPERA ASSOCIATION

GAETANO MEROLA, *General Director*

PAUL POSZ, *Business Manager*

Announces

THE TWO ALL-STAR OPERA HOUSE SERIES



8—Evening Events—8

RIGOLETTO	- - - - -	Oct. 17
BALLET Russe de MONTE CARLO	- - - - -	Nov. 21
ZINO FRANCESCATI	- - - - -	Jan. 22
BIDU SAYAO	- - - - -	Feb. 21
DRAPER and ADLER	- - - - -	Mar. 5
JAMES MELTON	- - - - -	Mar. 23
RISE STEVENS	- - - - -	Apr. 17
ANOTHER EVENT TO BE ANNOUNCED		



8—Sunday Matinee Events—8

MANON	- - - - -	Oct. 22
DON COSSACKS (Gen. Platoff)	- - - - -	Nov. 19
BALLET Russe de MONTE CARLO	- - - - -	Nov. 26
ROBERT CASADESUS	- - - - -	Dec. 3
ADOLF BUSCH and his Little Symphony	- - - - -	Feb. 25
DOROTHY MAYNOR	- - - - -	Mar. 4
LAWRENCE TIBBETT	- - - - - (Date not announced)	
ANOTHER EVENT TO BE ANNOUNCED		

•

WAR MEMORIAL OPERA HOUSE

Tickets on sale at Opera Box Office, Normandy Lane, City of Paris — EX. 8585

Order Your Season Tickets Now, While Choice Seats Are Available

THE OFFICIAL PIANO *of the*
SAN FRANCISCO OPERA COMPANY

BALDWIN



Choose your Piano as the Artists Do

VISIT OUR *Record Department*
ONLY GROUND FLOOR RECORD DEPT. IN THE CITY



THE BALDWIN PIANO CO.

310 SUTTER STREET, SAN FRANCISCO
1828 WEBSTER STREET, OAKLAND

MUSICAL ASSOCIATION OF SAN FRANCISCO
presents

**SAN FRANCISCO
SYMPHONY ORCHESTRA**

PIERRE MONTEUX, *Conductor*

LEONORA WOOD ARMSBY
President and Managing Director

HOWARD K. SKINNER
Business Manager

Thirty-third Season — Dec. 1 to April 14

FOUR SERIES

EIGHT FRIDAY AFTERNOONS at 2:15

FOUR THURSDAY EVENINGS at 8:30

TWELVE SATURDAY EVENINGS at 8:30
(Repeats of Friday Afternoon and Thursday Evening Concerts)

BRAHMS FESTIVAL — 3 EVENINGS at 8:30

GUEST ARTISTS

Pianists

ARTUR SCHNABEL • ANIA DORFMANN • ARTUR RUBINSTEIN
WITOLD MALCUZYNSKI • LEONARD PENNARIO

Violinists

ERICA MORINI • HEIFETZ • NAOUM BLINDER

Vocalists

LOTTE LEHMANN • DUSOLINA GIANNINI • FREDERICK JAGEL
MUNICIPAL CHORUS

Guest Conductors

EFRAM KURTZ • CARLOS CHAVEZ • LORIN MAAZEL

TICKETS — SYMPHONY BOX OFFICE — SHERMAN, CLAY — SUtter 1331

WAR MEMORIAL OPERA HOUSE

MUNICIPAL CONCERTS

1944-1945
THE ART COMMISSION
Presents

SAN FRANCISCO
SYMPHONY ORCHESTRA

PIERRE MONTEUX, Conductor

DECEMBER 9



ALEXANDER BRAILOWSKY

THE POET OF THE PIANO IN AN ALL RUSSIAN PROGRAM

JANUARY 25



YEHUDI MENUHIN

SAN FRANCISCO'S OWN BRILLIANT GENIUS OF THE VIOLIN

FEB. 1-2-3-4
8-9-10-11



RUSSIAN BALLET
BALLET THEATRE

10 SPECTACULAR PERFORMANCES

MARCH 2



MARIAN ANDERSON

THE GREATEST CONCERT ARTIST OF THE DAY

APRIL 10



GRACE MOORE
RAOUL JOBIN

IN CONCERT VERSION OF "LOUISE"



FIVE STAR SEASON

Season Reservations Now!

*SIX EVENTS including opening night of Ballet Theatre and choice of any one other Ballet performance, also the four guest artist concerts.
\$11.40, \$8.40, \$6.90, \$4.80, \$3.60, tax incl. BOX OFFICE, Sherman, Clay, SU 1331



DE PAOLIS



VOTIPKA



GARRIS



TURNER



TISSIER



AVAKIAN



LAWLOR

ARTISTS OF *San Francisco* OPERA COMPANY

HOW TO PRONOUNCE THEIR NAMES

LICIA ALBANESE

Lee'-chee-ah Ahl-bah-nay'-zay

LORENZO ALVARY

Lorenzo Ahl-vah'ry

ARMANDO AGNINI

Ar-mahn'-dow Ah-nee'nee

SALVATORE BACCALONI

Sahl-vah-tow'-ray Bach-ah-low'-nee

ETIENNE BARONE

Et-yehn Bah-row'-nay

GEORGE CEHANOVSKY

George Chay-han-off'-skee

VIVIAN DELLA CHIESA

Vivian Dell-lah-Kee-ay'-zah

OTELLO CERONI

Otello Chay-row'-nee

ANTONIO DELL'OREFICE

Antonio Dell-oh-reff'-ee-chay

ALESSIO DE PAOLIS

Ah-less'-see-oh Deh Pah'-oh-leece

LILY DJANEL

Lee-lee Zhan-nell

HERTA GLAZ

Hair-tah Glahz

FREDERIC JAGEL

Frederick Yay-gel

RAOUL JOBIN

Rah-ool Zhoh-ban'

BRUNO LANDI

Brew-no Lahn'-dee

GAETANO MEROLA

Gah-yay-tahn'-oh Mare'-oh-lah

IVAN PETROFF

Ee-vahn Pet-roff

EZIO PINZA

Et'-see-oh Peen'-zah

LILY PONS

Lee-lee Pawnce

KARL RIEDEL

Karl Ree-dell

STELLA ROMAN

Stay-lah Row-mahn'

ROBERTO SILVA

Ro-bare'-tow Seel'-vah

RISE STEVENS

Ree'-suh Stevens

FRANCESCO VALENTINO

Francesco Vah-lenn-teen'-oh

*Tribute
Silk*



A Gump-created hostess gown in celadon green, sapphire blue, Imperial yellow and Chinese plum. The material, Tribute Silk, now virtually unobtainable, was used by the Chinese to pay taxes.

Mandarin Room

GUMP'S

250 POST STREET

WEDNESDAY NIGHT, OCTOBER 18, at 8:00

FAUST

Opera in a prologue and four acts. Music by Charles Gounod.

Text by Barbier and Carré, after Goethe's tragedy.

THE CAST

Faust, a learned philosopher.....RAOUL JOBIN
Mephistopheles.....EZIO PINZA
Marguerite.....VIVIAN DELLA CHIESA
Valentine, her brother.....LEONARD WARREN
Siebel, a young soldier in love with Marguerite.....HERTA GLAZ
Martha, chaperon of Marguerite.....THELMA VOTIPKA
Wagner.....GEORGE CEHANOVSKY

Students, Soldiers, Villagers, Sorcerers.

Corps de Ballet

STAGE DIRECTOR

ARMANDO AGNINI

CONDUCTOR

WILLIAM STEINBERG

CHORUS DIRECTOR

KURT HERBERT ADLER

TIME AND PLACE: Germany during the Sixteenth Century

Prologue: Faust's Study

Act I: A Public Square — The Kermesse

Act II: Marguerite's Garden

Act III: Scene I: In the Cathedral

Scene II: The Soldier's Chorus

Scene III: Marguerite's Garden
several months later

Act IV: The Prison

SEATS FOR ALL REMAINING PERFORMANCES ARE
AVAILABLE AT OPERA BOX OFFICE, CITY OF PARIS

Encores not permitted — Bell rings three minutes before curtain rises

The Story of "Faust"

PROLOGUE

Faust, an aged philosopher, having passed his lonesome life in study, longs for his lost youth and is planning suicide when attracted by the joyousness of the young people about him. Mephistopheles, the devil incarnate, appears in answer to a summons uttered in desperation. With the beautiful Marguerite as a lure he does not find it difficult to bargain with the old philosopher for his soul, and a magic potion brings him youth.

ACT I

Valentine, about to leave for the war, entrusts his sister, Marguerite, to Siebel who loves her. It is Kermess time and there is festive drinking. Faust and Mephistopheles mingle with the townspeople. Mephistopheles, scornfully proffered wine, causes a nectar vintage to flow from the sign over the inn door. He proposes a toast to Marguerite. Valentine resents this with his sword, which Mephistopheles breaks in two. When Valentine holds the two pieces before him in the shape of a cross Mephistopheles shrinks away. In the midst of the dancing which now begins, Marguerite appears. She is charmed by Faust, who had retained the wisdom of his years when he became invested with the form and charm of youth.

ACT II

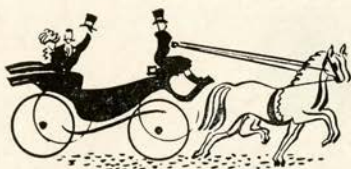
Siebel leaves flowers at Marguerite's door. They wither before the curse of Mephistopheles (uttered in Act I) and cannot be revived. Later Faust comes with his now constant companion, Mephistopheles, and places a casket of jewels at her window. Together, they hide to watch Marguerite when she opens her door to the flowers and to the jewels. Marguerite revels in the ornaments. Her rapturous song brings the querulous Martha, her companion, to the scene. Mephistopheles draws Martha into an amusing flirtation while Faust approaches Marguerite, who is completely won by his ardent protestations of love. Bidding Faust farewell, Marguerite wafts him a kiss as she enters the house. The casement opens and the enraptured Marguerite pours out the happiness of her heart into the night. Faust rushes to the window and clasps her in his arms where she lies fainting.

ACT III

A year and a half have passed. Marguerite, abandoned in her shame and deserted by Faust, cannot find peace from the scorn of her townsmen even in church. But Siebel, true to Valentine's trust in him, remains faithful to her. Valentine returns from the fighting to find Faust haunting Marguerite's window and Mephistopheles serenading her with an insulting song. Engaging in sword play to avenge his sister, Valentine is killed by Faust and dies, cursing her.

ACT IV

Marguerite, half demented, is in prison awaiting execution for the murder of her child. She takes happiness in the visit of Faust, who, with Mephistopheles, has come to deliver her. In her joy at again being in his arms, her life passes out and Mephistopheles' curses avail nothing against the sword of the archangel who guides the soul of Marguerite to heaven as Faust is dragged to perdition by his infernal master to fulfill his compact.



"Those Good Old Days"
revived at

Ed Goman's
WAGAY NINETIES

SCOOP!

Gilbert and Sullivan

REPertoire

Presented by

THE SAVOY OPERA COMPANY

H. M. S. PINAFORE • PIRATES OF PENZANCE
MIKADO or Gangster of Japan • TRIAL BY JURY

STAR CAST • FINEST SINGING COMPANY

GORGEOUS COSTUMES • SPECTACULAR PRODUCTION

FRITZ BERENS, Musical Director



Starts End of October — LIMITED ENGAGEMENT



RESERVATIONS TAKEN NOW • OPERA BOX OFFICE, CITY OF PARIS
EXbrook 8585, or at Theatre — BUSH STREET MUSIC HALL



BEAUTY

PURPLE PATH TO HAPPINESS

In every age, in every civilization, beauty has smoothed the path toward happiness. Whatever loveliness you have, heighten it, cultivate it, hold it against the years with the beauty preparations of Germaine Monteil. They will serve your beauty well, making it glow more brightly today, guarding it for tomorrow and tomorrow.

Germaine Monteil

THURSDAY NIGHT, OCTOBER 19, at 8:30

THE SECRET OF SUZANNE

Opera in one act. Music by Ermanno Wolf-Ferrari. Book by Max Kalbeck.
Text by Claude Aveling, after the Italian of Enrico Golisciani.

THE CAST

The Countess Suzanne.....VIRGINIA MacWATTERS
Count Gil.....HUGH THOMPSON
Sante, a dumb servant.....ALESSIO DE PAOLIS

STAGE DIRECTOR
ARMANDO AGNINI

CONDUCTOR
KURT HERBERT ADLER

TIME AND PLACE: About 1840; Living-room of Count Gil's Villa in Piedmont

followed by

SALOME

Opera in one act, by Richard Strauss.
Adapted from Oscar Wilde's romance.

THE CAST

Salome, daughter of Herodias.....LILY DJANEL
Herod, Tetrach of Judea.....FREDERICK JAGEL
Herodias.....MARGARET HARSHAW
Jochanaan, the Prophet.....JOHN SHAFER
Narraboth, Captain of the Guard.....JOHN GARRIS
Page of Herodias.....HERTA GLAZ
First Nazarene.....LORENZO ALVARY
Second Nazarene.....ROBIN NELSON
First Soldier.....GEORGE CEHANOVSKY
Second Soldier.....EDWARD WELLMAN
First Jew.....JOHN GARRIS
Second Jew.....ANTHONY BERTON
Third Jew.....ALESSIO DE PAOLIS
Fourth Jew.....JOSEPH TISSIER
Fifth Jew.....CHARLES GOODWIN
A Slave.....ELMA HEITMAN
A Cappadocian.....W. VERNON SANDERS
A Henchman.....GEARY ANDERSON

Roman Soldiers, Slaves, Musicians, Jews, Nazarenes, Pages, Executioner

STAGE DIRECTOR
ARMANDO AGNINI

CONDUCTOR
GEORGE SEBASTIAN

TIME AND PLACE: A. D. 30; Tiberias in Galilee.

Scene: A Great Terrace of the Palace of Herod

Setting designed by Armando Agnini and constructed in the studios of the
San Francisco Opera Association.

SEATS FOR ALL REMAINING PERFORMANCES ARE
AVAILABLE AT OPERA BOX OFFICE, CITY OF PARIS

Encores not permitted — Bell rings three minutes before curtain rises

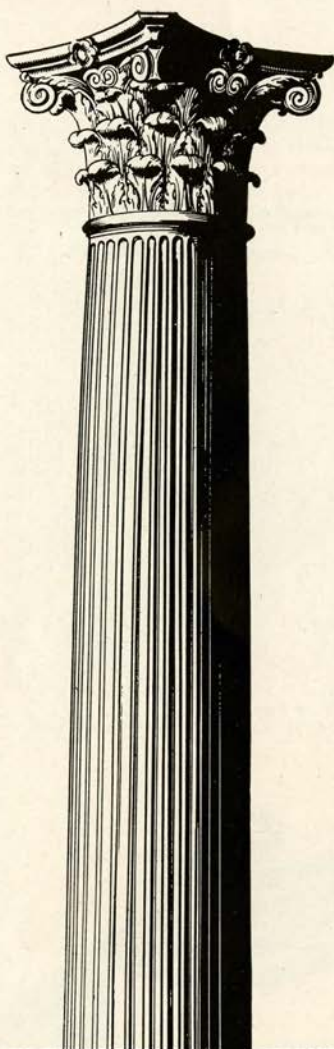
The Story of "The Secret of Suzanne"

The charming Suzanne slips home with only time to give Sante her things and retreat to her room before Count Gil appears. His feverish restlessness augments as, sniffing the odor of tobacco, he secretly doubts his bride's fidelity, since none in his household is permitted to smoke. Joined by Suzanne, he is won from lover-wise jealousy to adoration till again he breathes the hateful odor. Accusing Suzanne of shielding some secret, he is astounded at her acquiescence and plea that he overlook her indulgence of a craving that speeds the hours of his absence. Suzanne's timid reconciliation after their quarrel embraces a gentle eagerness that he go to his club. Unhappy suspicions quickened again, the Count storms off, and Suzanne, in mischievous content, settles herself to smoke. Gil's return discovers her secret. Relieved, he begs forgiveness, and in humble sacrifice accepts a cigarette for his own lips.



The Story of "Salome"

Jochanaan, the Prophet, has been imprisoned by Herod because of his teachings. But fearing the Jews, Herod will not put him to death. Narraboth, who is madly infatuated with the beautiful and sensuous Salome, and his soldiers guard the entrance to a banquet hall where revel reigns. Salome, tired of the banquet and the sensuous advances of Herod, comes onto the terrace. She hears Jochanaan's voice coming from the cistern in which he is held prisoner and demands that he be brought out. Unable to resist her cajoling, Narraboth complies. Jochanaan begins a terrible denunciation of Herodias. Salome falls wildly in love with him and gives vent to her infatuation in abandoned song. Denouncing her Jochanaan descends into the cistern and Narraboth, crazed by what he has witnessed, kills himself. Herod, Herodias and the entire court come onto the terrace. The warning voice of the Prophet is heard from the cistern. Herodias urges the king to order his execution but Herod, still fearing the Jews, refuses. Herod then commands Salome to dance for him but she refuses unless he gives her whatever she may ask for. At his promise Salome begins the Dance of the Veils and at the urging of Herodias claims the head of Jochanaan for her reward. The horrified Herod begs release from his promise but Salome will not be dissuaded. A headsman descends into the cistern and comes up with the dripping head of Jochanaan on a platter. Salome receives the head from the executioner and with abandon pours out her amorousness for the white flesh of Jochanaan. But when she kisses the lifeless lips Herod can stand no more and at his command the guards crush the ghoulish princess to death under their shields.



Your WILL *cannot* bequeath "good judgment"

By intelligent management you have built up your Estate. Your Will sets up the Plan you want your Executor to follow.

If you appoint an *individual* as Executor and Trustee, will his judgment in handling your estate match your judgment in creating it? And will he remain always in good enough health, and be free enough from his own personal affairs to give your Plan his best attention?

On the other hand, by appointing this Bank as Executor and Trustee you are definitely assured specialized experience, group judgment and careful attention throughout the life of your estate. Our *continuing staff* of seasoned estate managers can and do faithfully follow both the letter and the spirit of your Plan.

Get details from any officer of this Bank.

Head Office: 400 CALIFORNIA STREET
Mission Branch: 16TH & JULIAN AVENUE

**THE BANK OF
CALIFORNIA**
NATIONAL ASSOCIATION

Founded in 1864

SAN FRANCISCO · PORTLAND · SEATTLE · TACOMA

BUY U. S. WAR BONDS
AND STAMPS

1944
OUR
EIGHTIETH
ANNIVERSARY
YEAR



DANCING ON THE PENINSULA
in the beautiful

GARDEN ROOM

EVERY SATURDAY EVENING

featuring the romantic voice of

BOB KEELY

with the

**BENJAMIN FRANKLIN HOTEL
ORCHESTRA**

IN SAN MATEO
30 MINUTES FROM SAN FRANCISCO



DUANE GOWLAND, Mgr.



California Grape Brandy 84 proof.
Cresta Blanca Wine Company, Inc., Los Angeles, Calif.

The Proscenium Arch



is built to be the frame for
pictures created upon a stage.
To form these pictures many are called
to help. . . . The Moving, Living and Col-
orful pictures, so full of delightful detail
captivate the eye. . . . It has been our
privilege to offer to the Opera Lovers of
San Francisco the products of our effort.
For many years we have been the exclusive
designers and producers of costumes for
this outstanding organization. May we be
of service to you.

GOLDSTEIN & CO.

989 Market St.

Est. 1868

Garfield 5150

OPERA BOX HOLDERS

Season 1944

MR. AND MRS. C. ROBERT ADAMS
MR. AND MRS. GEORGE WASHINGTON BAKER, JR.
MRS. GEORGE EDWIN BENNETT
MR. AND MRS. CHARLES R. BLYTH
MR. AND MRS. JAMES PARKS BRADLEY
MR. AND MRS. JOHN DAVIS BRADLEY
MR. AND MRS. ROY BRONSON
MR. AND MRS. GEORGE T. CAMERON
MR. AND MRS. WILLIAM W. CROCKER
MRS. FRANK P. DEERING
MR. AND MRS. SIDNEY M. EHRLMAN
MR. AND MRS. MORTIMER FLEISHHACKER
DR. AND MRS. FRANK R. GIRARD
MR. AND MRS. JOSEPH T. GRACE
MR. AND MRS. CHARLES L. HARNEY
MRS. I. W. HELLMAN
MRS. ALFRED HERTZ
MR. AND MRS. CLARENCE LORAN JOHNSTON
MRS. MARCUS S. KOSHLAND

MRS. LEWIS LAPHAM
MR. AND MRS. JUILLIARD McDONALD
MR. AND MRS. FELIX MCGINNIS
MR. AND MRS. FREDERICK W. McNEAR
MR. AND MRS. GAETANO MEROLA
MR. AND MRS. C. O. G. MILLER
MR. AND MRS. EPPS J. MILLER
MR. AND MRS. KENNETH MONTEAGLE
MRS. STANHOPE NIXON
MRS. GEORGE A. POPE
MRS. ARLINE M. ROLKIN
MRS. HENRY POTTER RUSSELL
SAN FRANCISCO OPERA GUILD
JUDGE AND MRS. M. C. SLOSS
MRS. SIGMUND STERN
MR. AND MRS. BERTRAM V. STURDIVANT
DR. AND MRS. DAVID ARMSTRONG TAYLOR
MR. AND MRS. NION R. TUCKER

Angelo J. Rossi Co. INC.

45 Grant Avenue

Douglas 8060

Flowers

Distinctive Creations for All Occasions

FLOWERS TELEGRAPHED ANYWHERE

Angelo J. Rossi Co., Inc.

Angelo J. Rossi, Pres. and Mgr.

Famous for Flowers Since 1885

A Visit After the Opera to the

CARDINAL RICHELIEU *Cocktail Lounge*

IS A PERFECT ENDING TO A PERFECT DAY

THE COCKTAIL LOUNGE WITH
A DISTINCTIVE ATMOSPHERE

THE RICHELIEU HOTEL

VAN NESS AT GEARY

Time Tonight
for a la carte supper
and Midnight Show

**MAYRIS
CHANEY'S
GLAMOUR-TIME
REVUE!**

Starring

RAY THOMAS

America's Newest & Funniest Comedian

DOUG RICHARDSON

and his "Marionettes" (Held over)

TERRY ANDRE

Gorgeous Singing Starlette

MARYANNE BAXTER

and her "Dance of the Petals"

The Glittering Mayris Chaney
"BEVY OF BEAUTIES"

FRANKLYN SMITH

and his Entertaining Orchestra

DINNERS from \$2.00
No Cover Charge



1st Show
at 7:30 p.m.

DAVE HERSH'S ROMANTIC

RICHELIEU

CASINO

1039 GEARY ST.

ORdway 0113

GUARANTOR MEMBERS

of the

SAN FRANCISCO OPERA ASSOCIATION

C. Edgar Adams	Mr. and Mrs. James A. Brown	Florence E. Dean
Mr. and Mrs. C. Robert Adams	Mrs. Louis C. Brown	Mrs. Charles J. Deering
Mrs. John S. Adler	Ralph Brown	Mrs. Frank P. Deering
Mrs. Wallace M. Alexander	Walter Brown	In Memoriam
Lucy H. Allyne	Mrs. E. E. Brownell	Frank P. Deering
T. E. Ambrose	Starr Bruce	Mrs. Georges de Latour
Mr. & Mrs. George Washington Baker, Jr.	Mr. and Mrs. Frank E. Buck	Frank H. Denman
Edward R. Bacon	Dr. Leonard W. Buck	Mr. and Mrs. John Michael Desch
A. R. Baldwin	Thomas Buck	Richard Detert
B. A. Banker	Mrs. Neil Buckley	Mrs. Robert T. Devlin
Mrs. John T. Barnett	Mrs. Felix Butte	Mrs. Donald R. Dickey
Peter Barnett	John R. Cahill	Mrs. L. W. Dinkelspiel
Mrs. Edward F. Barron	Dr. William Otis Callaway	Mrs. Samuel L. Dinkelspiel
Irving P. Bartel	Mr. and Mrs. George T. Cameron	Mr. and Mrs. O. Dewey Donnell, Jr.
Mr. and Mrs. Robert S. Beall	Leo Cardoza	Katharine Donohoe
Mr. and Mrs. F. N. Belgrano, Jr.	Estelle Carpenter	Mrs. F. A. Dorn
John Bender	Selah Chamberlain, Jr.	Mrs. Lambert Dunbar
Mr. and Mrs. David Benioff	Charles A. Christin	Dr. Muriel E. Edwards
Mrs. George E. Bennett	Mrs. Tobin Clark	Mr. and Mrs. Albert L. Ehrman
Mrs. Charles H. Bentley	Mrs. Warren D. Clark	Mrs. Alfred Ehrman
Mr. Walter H. Bentley	Mrs. John P. Coghlan	Sidney M. Ehrman
Dr. and Mrs. Tholow Binkley	Mr. and Mrs. George D. Cohn	Mrs. S. W. Ehrman
Newton Bissinger	Mrs. Max M. Cohn	Wilfred Eldred
W. Harry Blatchly	Mrs. Colbert Coldwell	H. A. Ellis
Louis Bloch	Persis H. Coleman	John W. Elwood
Charles R. Blyth	Mr. and Mrs. Jesse Colman	Mrs. Milton H. Esberg
Mrs. Angus Gordon Boggs	H. D. Collier	Mrs. Harold K. Faber
Mrs. Robert C. Bolton	J. J. Coney	Paul I. Fagan
Mrs. George M. Bowles	Mary R. Conlin	Lionel B. Feigenbaum
Dr. Karl M. Bowman	Dr. and Mrs. Frederick C. Cordes	Mrs. Alexander Field
Louise A. Boyd	Mrs. W. M. Craig	Mr. and Mrs. Marshal H. Fisher
Walter C. Brauns	Arthur S. Crites	Mortimer Fleishhacker
Mrs. William Ellery Briggs	William W. Crocker	John F. Forbes
Mr. and Mrs. Roy A. Bronson	George E. Crothers	Mr. and Mrs. Edward T. Ford
Mrs. Julia Fox Brooke	R. K. Davis	Jennie S. Frank
George W. Brooks	Mrs. Stuart Davis	Mr. and Mrs. Thomas G. Franck
Dr. LeRoy Brooks	Davis-Schonwasser	William Fries
Arthur M. Brown, Jr.		

FLOWERS

MAKE THE PERFECT GIFT... THEY SPEAK ALL
LANGUAGES... AND THEY WILL BE ESPECIALLY
ELOQUENT IF THEY ARE FROM...

Podesta & Baldocchi

America's Most Famous Florists

224 GRANT AVENUE, SAN FRANCISCO

Telephone: SUTTER 6200

The World's Only True

DAPHNE

ROLLEY alone has captured the fresh, natural fragrance of the Daphne . . . in superb quality perfume or rich, full-bodied cologne. True Daphne is but one of the Forty Famous Fragrances in perfume and matching cologne awaiting your selection.



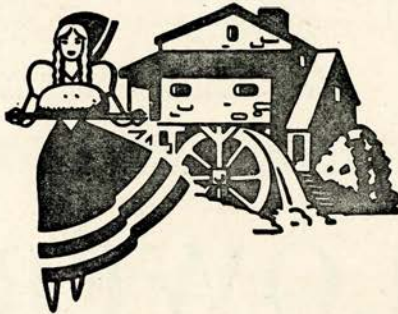
Perfume . . . \$1.25 dram
to \$8.00 ounce.
Matching Cologne, \$2.00
for 3 ounces.
Add 20% Federal Tax

ROLLEY
PERFUMES



"TRULY AMERICA'S FINEST"

108 GEARY NEAR GRANT... 361 SUTTER BELOW STOCKTON... EXBROOK 4471



There's a Fine art in bread
making, too. Every **OROWEAT**
loaf is a masterpiece.

The **GRIST-MILL BAKERS**

OROWEAT

GUARANTOR MEMBERS — *Continued*

<p>Nelly Gaffney Maurice A. Gale L. Galtie Vallejo Gantner Mr. and Mrs. Henry Gede, Jr. James P. George D. Lyle Ghirardelli Mrs. Domingo Ghirardelli Dr. and Mrs. Arthur Collis Gibson George B. Gillson Dr. and Mrs. Frank R. Girard Mr. and Mrs. Harry Gittings, Jr. Rosemary Glosz Louis Goldstein Lutie D. Goldstein Mr. and Mrs. Jack Gomperts Lorraine C. Goodman Mr. and Mrs. Joseph T. Grace Mrs. Joseph D. Grant Mrs. Maurice S. Greenberg Stuart N. Greenberg Mrs. Frederick S. Greenlee Gustav Gumpel Madeleine Haas Marshal Hale Prentis C. Hale, Jr. R. B. Hale Herbert E. Hall Eminel P. Halsted W. F. Hanrahan Mrs. Robert D. Harden W. Glenn Harmon Mrs. Charles L. Harney Maurice E. Harrison Mrs. Russell P. Hastings Mrs. Elystus Hayes Mrs. Timothy Hayes A. W. Hazen Mrs. E. S. Heller Walter D. Heller Walter S. Heller Mrs. I. W. Hellman Mrs. Robert B. Henderson</p>	<p>Mrs. Rudolph G. Henning Dr. Ernest E. Hessing Leslie W. Hills Mr. and Mrs. Harry Hilp Osgood Hooker L. Arundel Hopkins Mrs. H. A. Hornlein Dr. John F. Huffman Marian Huntington Mrs. James Irvine Dr. S. Nicholas Jacobs R. J. Jansen Clancy Ann Jefferys Mr. and Mrs. Louis Jefferys Ector R. Johnson Mr. and Mrs. Clarence Loran Johnston General Kenyon A. Joyce Mrs. Ira Kahn Henry J. Kaiser Edward D. Keil H. C. Kelsey Charles Kendrick Marion H. Kent Percy L. King Dr. John J. Kingston R. W. Kinney Mrs. Josephine R. Kleinjung Mrs. William E. Kleinsorge Robert L. Kline Caroline Korbel Elsa R. Korbel Mrs. Jesse Koshland Mrs. Marcus S. Koshland Frederick J. Koster Mr. and Mrs. Edwin V. Krick Gus Kroesen Esther Kuenz Mrs. Albert George Lang Mrs. Philip Lansdale Mrs. Lewis Lapham Mrs. Charles G. Lathrop Edwin Leitch</p>	<p>John A. Lesoine J. B. Levison Philip N. Lilienthal Mr. and Mrs. Samuel Lilienthal Mr. and Mrs. William J. Lindenberger Clarence R. Lindner F. L. Lipman Mrs. Norman B. Livermore Mr. and Mrs. James K. Lochead Mrs. A. J. Lowrey Louis R. Lurie Edmunds Lyman James W. McAlister Mr. and Mrs. A. M. McCarty Adelaide McColgan Mrs. William H. McCormick Mr. and Mrs. Juilliard McDonald Mrs. Mark L. McDonald Mrs. John McGaw Mr. and Mrs. Felix S. McGinnis Mrs. Alfred McLaughlin Mrs. Clarissa McMahan Mrs. George P. McNear Peter Macris Mr. and Mrs. Grover A. Magnin Mrs. J. W. Mailliard, Jr. Mrs. Joseph A. Mancini Mr. and Mrs. George M. Mardikian Edward Martin Mr. and Mrs. R. W. Martenet A. C. Mattei Harry D. Maxwell Evelyn Mendessolle Mr. and Mrs. Gaetano Merola Mrs. Helen Merritt Mrs. George H. C. Meyer Mr. and Mrs. Julian Meyer Mrs. C. F. Michaels Mr. and Mrs. C. O. G. Miller Mr. and Mrs. Epps J. Miller Mr. and Mrs. Edward F. Moffatt Henrietta Moffat</p>
---	--	--

REMEMBER THE NAME

Freed-Eisemann

when you buy your post-war radio-phonograph with FM

"One of the world's great radio-phonographs"

BUY MORE WAR BONDS!

Freed Radio Corporation, New York, N. Y.



VANESSI'S

GOOD FOOD



COLUMBIA CONCERTS, INC.

Presents

"GREAT NAMES IN MUSIC"

Appearing 1944 San Francisco Opera Season

LICIA ALBANESE
LORENZO ALVARY
CHARLES KULLMAN

MARGARET HARSHAW
LILY PONS
RISE STEVENS

Appearing San Francisco Opera Concert Series, 1944-1945

ROBERT CASADESUS
ADOLF BUSCH LITTLE SYMPHONY
DON COSSACKS (PLATOFF)
DRAPER AND ADLER

DINO FRANCESCATTI
DOROTHY MAYNOR
JAMES MELTON
BIDU SAYAO
RISE STEVENS

Appearing with San Francisco Symphony, 1944-1945 Season

HEIFETZ
YEHUDI MENUHIN

ERICA MORINI
CARLOS CHAVEZ

LORIN MAAZEL
EFREM KURTZ

COLUMBIA CONCERTS, Inc. 113 West 57th Street, New York

San Francisco Representative, PAUL POSZ, War Memorial Opera House

Los Angeles Representative, L. E. BEHYMER, 415 Auditorium Building

GUARANTOR MEMBERS — *Continued*

James K. Moffitt
 Mr. and Mrs. Kenneth Monteagle
 Mr. and Mrs. Paige Monteagle
 Frederick H. Montgomery
 Mrs. Joseph A. Moore
 A. C. Morici
 Guido J. Musto
 Laura Musto
 Mr. and Mrs. A. E. Nelson
 Mr. and Mrs. Ralph R. Nelson
 Julia M. Neppert
 Arthur A. & Hugo D. Newhouse
 Dr. and Mrs. Alfred Newman
 Mr. and Mrs. John Francis Neylan
 Mrs. Stanhope Nixon
 Mrs. Mary L. Obujen
 Benjamin J. Older
 Mrs. Edwin Letts Oliver
 Mr. and Mrs. Charles R. Page
 Mrs. S. H. Palmer
 Mrs. Henry Passow
 Dr. Sadie D. Patek
 Peninsula Box Office
 Mrs. O. B. Perry
 George W. Phillips, Jr.
 Mrs. Grattan D. Phillips
 Mrs. Herman Phleger
 Mr. and Mrs. G. Pisani
 Aram Poladian
 Mrs. George A. Pope
 Mrs. Paul Posz
 Mrs. Ashton H. Potter
 Mr. and Mrs. Stanley Powell
 Colonel John Sedgwick Pratt
 Dr. Edward Purcell
 John B. Quigley
 Mrs. Carl Raiss
 A. S. Rees
 Dr. and Mrs. Ralph A. Reynolds
 Neville J. Rich
 Mrs. H. A. Richardson

Mrs. Nathan Rogers
 Mrs. Arline M. Rolkin
 Col. and Mrs. Robert A. Roos
 Mr. and Mrs. John N. Rosekrans
 Leland S. Rosener
 Mrs. Angela Wing Roth
 Mr. and Mrs. William P. Roth
 John Rothschild
 Ken F. Royce
 Mohr M. Rubin
 Frank K. Runyon
 Mrs. A. S. Russell
 A. K. Salz
 Horace H. Scales
 Mr. and Mrs. Carl Schaubye
 Else Schilling
 Dr. Walter Schilling
 George B. Schirmer
 Mrs. Frank Schwabacher
 James H. Schwabacher
 Mrs. Louis A. Schwabacher
 Harry S. Scott
 Don Searle
 Mr. and Mrs. Richard H. Shainwald
 Mr. and Mrs. R. S. Shainwald
 Mrs. Nelson Towne Shaw
 Frederic R. Sherman
 Richard O. Simon
 Mrs. Norman J. Sinclair
 Mrs. Edgar Sinton
 Charles W. Slack
 Mrs. Leon Sloss
 Judge and Mrs. M. C. Sloss
 Stanley C. Smallwood
 Mr. and Mrs. Charles Watt Smith
 Capt. George Willard Somers
 Fred H. Spiess
 Mrs. Edward B. Stanwood
 G. A. Starkweather
 Mr. and Mrs. Ralph J. A. Stern
 Mrs. Sigmund Stern

Dr. and Mrs. John Philip Strickler
 Benka Strickler
 John P. Strickler III
 B. V. Sturdivant
 Mr. and Mrs. Walter H. Sullivan
 Mrs. Ernest J. Sultan
 Mr. and Mrs. Alfred Sutro
 Louis Sutter
 E. J. Sweetland
 Mrs. Andrew B. Talbot
 Mrs. David Armstrong Taylor
 Mr. and Mrs. William Timson
 George C. Thierbach
 Mrs. Myron I. Thomas
 E. W. Thompson
 Mr. and Mrs. Morley Thompson
 Mr. and Mrs. C. R. Tobin
 Mr. and Mrs. Ernest J. Torregano
 Dr. and Mrs. Harold Guyon Trimble
 Gina Troya
 Mrs. Alfred Tubbs
 Mr. and Mrs. Nion R. Tucker
 Mr. and Mrs. Daniel Volkmann
 George Wagner
 Morton Wallace
 Whitney Warren, Jr.
 Mr. and Mrs. Michel D. Weill
 Mrs. Millard C. White
 Cynthia V. Whitman
 Rich Whitmore
 Mrs. F. A. Wickett
 Robert L. Wiel
 Mr. and Mrs. Brayton Wilbur
 Stephen Williams
 Mrs. J. L. Wolf
 Barbara Young
 Mr. and Mrs. F. A. Zane
 Mrs. V. Zaruba
 Joan Zeegers
 Mr. and Mrs. J. D. Zellerbach
 Edgar T. Zook

In the Mural Room

AFTER THE OPERA

... still time for two
hours of dancing ...
to the music of

TED WEEMS

and his orchestra
nightly except Monday
8:30 till 1 and Saturday
afternoon Tea Time

MONDAY NIGHT

and every evening
before 8:30 ... enjoy
the finest foods in
luxurious surroundings

NO COVER CHARGE
NO CABARET TAX

Concert Music

Hotel St. Francis

Don E. London • General Manager



KARL C. WEBER
President and
General Manager

At the Civic Center . . . so conveniently near . . .
Hotel Whitcomb is the home of the Whitcomb
Inn, the Dickens Pub and The Parade Cocktail
Lounge.

HOTEL **WHITCOMB**

MARKET STREET AT 8TH



Simi Vineyard

FINE CALIFORNIA WINES

When entertaining, serve superb SIMI
vintage table wines . . . Burgundy,
Cabernet, Carignan, Zinfandel, and
Larose, Sauterne, Chablis . . . ma-
tured with unhurried care from
choicest Sonoma hillside grapes
. . . ask for SIMI . . . pronounced
'See-Me . . . at your dealer's.

PARROTT & CO. . . San Francisco . . . Sole U. S. Distributors

SAN FRANCISCO OPERA GUILD, INC.

MRS. ROGER D. LAPHAM, JR., *Chairman*

MRS. JOHN PHILLIP COGHLAN, JR., *Vice-Chairman*

MRS. STANLEY POWELL, *Vice-Chairman*

MRS. FREDERICK WHITMAN, *Secretary*

MR. JERD SULLIVAN, *Treasurer*

Members

Mrs. Lloyd S. Ackerman
Mrs. Arthur C. Adams
Mr. C. Edgar Adams
Mrs. Alexander Albert
Mrs. Wallace M. Alexander
Mrs. Berrien Anderson
Miss Margaret Andrews
Mr. Noel T. Arnold
Mrs. R. M. Barthold
Mrs. Edward Otis Bartlett
Mrs. Julian Palmer Beek
Mr. A. M. Benfield
Mrs. G. Grace Benoist
Mrs. Charles H. Bentley
Miss Jessie E. Benton
Dr. and Mrs. Tholow Binkley
Mrs. Roy N. Bishop
Mrs. Charles N. Black
Miss Jennie M. Blair
Miss Phyllis Bliss
Mr. Louis Bloch
Miss Ruth V. Bloch
Mrs. Walter W. Boardman
Mrs. Angus Gordon Boggs
Mrs. George M. Bowles
Miss Louise A. Boyd
Mr. and Mrs. James Parks Bradley
Mr. H. Sewall Bradley
Mr. and Mrs. John D. Bradley
Mrs. M. J. Brandenstein
Mrs. Edward Bransten
Mrs. W. C. Brauns
Mrs. A. F. Bray
Miss Bogardus Brodt
Mrs. Julia Fox Brooke
Mr. Arthur M. Brown, Jr.
Mrs. Hillier Brown
Mrs. E. E. Brownell
Mr. Frank J. Brucato
Mrs. Starr Bruce
Mr. Starr Bruce
Lt. and Mrs. Neil Buckley
Mrs. Robert B. Burroughs
Miss Estelle Carpenter
Dolores Calles
Major C. J. Carey
Mr. George T. Cameron
Mr. Russell Carpenter
Mrs. John Casserly
Mrs. A. L. Chickering
Mr. Drew Chidester

Madame Clara
Mrs. John P. Coghlan
Mrs. John Phillip Coghlan, Jr.
Mr. John P. Coghlan
Mrs. Max M. Cohn
Miss Persis H. Coleman
Mr. H. D. Collier
Mrs. Jesse D. Colman
Miss Mary R. Conlin
Mrs. W. B. Cope
Mrs. Charles Crocker
Mr. Templeton Crocker
Judge George E. Crothers
Mrs. John D. Crummey
Mrs. O. K. Cushing
Mrs. Chester Dahl
Mrs. John F. Davis
Mrs. Charles J. Deering
Mrs. Georges deLatour
Mr. Frank H. Denman
Mr. and Mrs. John Michael Desch
Mrs. Lloyd W. Dinkelspiel
Mrs. Samuel L. Dinkelspiel
Mr. and Mrs. Dewey Donnell
Miss Katherine Donohoe
Mrs. Warrington Dorst
Mrs. Paul M. Downing
Mrs. Frank R. Dray
Mrs. H. B. Drescher
Mrs. Lambert Dunbar
Mrs. Charles Dunphy
Dr. Muriel E. Edwards
Mr. Philip Ehrlich
Mrs. Alfred Ehrman
Mrs. Sidney Ehrman
Mrs. Milton H. Esberg
Mrs. Walter Filer
Mrs. Marshall Fisher
Mrs. Herbert Fleishhacker, Jr.
Mrs. Mortimer Fleishhacker, Jr.
Mrs. George Flood
Mrs. B. C. Floyd
Mrs. John F. Forbes
Mrs. Bernard W. Ford
Mrs. W. Parmer Fuller, III
Mrs. Alfred Ghirardelli
Mr. D. Lyle Ghirardelli
Mrs. Domingo Ghirardelli
Dr. and Mrs. Thomas A. Gibson
Mr. George B. Gillson
Dr. Frank Girard

Mrs. Frank Girard
Mrs. J. H. Glide
Mrs. Harry F. Gittings, Jr.
Miss Amelie Gier
Miss Lutie Goldstein
Mr. Jack Gomperts
Miss Lorraine C. Goodman
Mrs. James Graham
Mrs. Joseph D. Grant
Mrs. Spencer Grant
Mrs. Horace Gray
Mr. and Mrs. Stuart N. Greenberg
Mr. Emil Greenebaum
Mrs. Frederick L. Greenlee
Mrs. Gustav Gumpel
Mrs. Walter A. Haas
Mrs. Walter A. Haas, Jr.
Miss Ethel Hager
Mr. Marshall Hale
Mr. R. B. Hale
Mrs. Richard J. Hanna
Mrs. Robert D. Harden
Mrs. Charles L. Harney
Mrs. Russell Hastings
Mr. A. W. Hazen
Mrs. Richard Heimann
Mrs. E. S. Heller
Mr. Walter D. Heller
Mr. Walter S. Heller
Mrs. Frederick Hellman
Mrs. I. W. Hellman
Mrs. Wellington S. Henderson
Mrs. Alfred Hertz
Mrs. A. W. Hewlett
Mrs. Harold Hill
Mrs. Harry Hill
Mrs. Stanley Hiller
Mr. and Mrs. Harry H. Hilp
Mrs. A. F. Hockenbeamer
Mrs. Clifford P. Hoffman
Mrs. Osgood Hooker
Mrs. Thomas Carr Howe, Jr.
Mrs. Thomas R. Hughes
Mrs. John Power Hutchins
Dr. S. Nicholas Jacobs
Mr. R. J. Jansen
Mr. Harold I. Johnson
Mr. Ivar Johnsson
Mrs. Clarence Loran Johnston
Mrs. Henry J. Kaiser
Mr. Ben C. Keator



OUR SOCIAL HOSTESS WILL INTRODUCE YOU

JEAN MERRICK
703 Market St.
Suite 1302
YUkon 2923

A highly ethical introduction
bureau conducted in good
taste.
Telephone for appointment.

RAY'S BEAUTY STUDIO

233 POST STREET
Mezzanine Floor
Sutter 8691

Featuring BEAUTIFUL NATURAL COLD WAVES

The Zebra Room

ATOP NOB HILL

COCKTAILS

LUNCH ★ DINNER

A sophisticated atmosphere where meals
are better and charm is added by



HUNTINGTON HOTEL

1075 CALIFORNIA

EUGENE N. FRITZ, Managing Owner

BY APPOINTMENT TO
H. M. THE LATE KING OF PORTUGAL

CORGO

Number One Cocktail



Try it! Here's How: To a portion of iced Corgo Number One Fine Tawny Port add a twist of orange peel. Delightful taste treat.

Imported by WILLIAMS IMPORTERS. A Division
of R. C. Williams & Co., Inc., 610 Fifth Ave., N. Y.

OPERA GUILD MEMBERS—Continued

- | | | |
|---|---|---|
| <p>Mr. Charles Kendrick
Mrs. Henry S. Kiersted
Mrs. J. R. Kleinjung
Miss Caroline Korbel
Mrs. Abraham Koshland
Mrs. Daniel Koshland
Mrs. Marcus S. Koshland
Mr. Frederick Koster
Mr. Gus Kroesen
Mrs. H. N. Kuechler, Jr.
Miss Esther Kuenz
Mrs. Albert George Lang
Mrs. Philip V. H. Lansdale
Mrs. Roger D. Lapham, Jr.
Mrs. Roger D. Lapham
Mrs. Thomas Larke, Jr.
Mrs. Charles G. Lathrop
Mrs. T. M. Lauridsen
Mrs. Claude Lazard
Mrs. Louis Lengfeld
Mr. John A. Lesoine
Mr. Albert Lester
Mrs. Sidney Liebes
Miss Frances Marie Lilienthal
Mr. F. L. Lipman
Miss Edith Livermore
Mrs. Carl Livingston
Mr. and Mrs. James K. Lothead
Mrs. John Logan
Mrs. Dan E. London
Mr. James W. McAlister
Mrs. Atholl McBean
Mr. A. M. McCarty
Mrs. W. H. McCormick
Mrs. D. E. McLaughlin
Mrs. George P. McNear
Mrs. Thomas P. Mailliard
Dr. Ergo A. Majors
Mrs. Vivian Mann
Mrs. Walter Martin
Mrs. Charles Mayer
Mrs. William G. Merchant
Mrs. R. P. Merillion
Mr. and Mrs. Gaetano Merola
Mrs. H. C. Merritt, Jr.
Mrs. John B. Metcalf
Mr. C. O. G. Miller
Mrs. Harry East Miller
Pvt. Franklin Mittau
Mr. Edward F. Moffatt
Mr. J. K. Moffitt
Mrs. Kenneth Monteagle</p> | <p>Mr. Kenneth Monteagle
Mr. and Mrs. Paige Monteagle
Mr. George Montgomery
Mrs. James W. Morgan
Dr. Grace McCann Morley
Miss Alicia Mosgrove
Miss Laura Musto
Mrs. A. N. Nathan
Miss Julia M. Neppert
Mr. J. LeRoy Nickel, Jr.
Miss Mary Obujen
Mrs. Jack Okell
Mr. Benjamin J. Older
Mrs. Julius Oppenheimer
Mrs. William H. Orrick
Mrs. William Parrot
Miss Barbara Parrott
Mr. Charles R. Page
Mr. Philip P. Paschel
Mrs. Oscar Butler Perry
Mrs. George A. Pope, Jr.
Mrs. Kenneth Pope
Mrs. Hugh B. Porter
Mrs. M. C. Porter
Mr. J. Sheldon Potter
Mrs. Jerome V. Powell
Mrs. Stanley Powell
Mr. and Mrs. Stanley Powell Jr.
Mr. Walter G. Preddy
Mrs. John Raggio
Dr. Ralph Arthur Reynolds
Mrs. H. A. Richardson
Miss Gertrude Richter
Mrs. James W. Roberts
Mrs. Arline Miller Rolkin
Mr. Robert A. Roos
Mrs. Charles W. Rosenbaum
Mrs. Angela Wing Russell
Mr. F. W. Rubke
Mrs. Henry Potter Russell
Miss Pauline E. Ryder
Miss Virginia Ryder
Mr. Marcus L. Samuels
Mrs. Karl Schaefer
Mr. and Mrs. Carl Schaubey
Mrs. Rudolph Schilling
Mr. George B. Schirmer
Mr. Nat Schmulowitz
Mr. Albert Schwabacher
Mrs. Carrie Schwabacher
Mrs. Louis A. Schwabacher
Mrs. Bert C. Scott</p> | <p>Mr. H. S. Scott
Mr. and Mrs. Bruce Selfridge
Mrs. Richard H. Shainwald
Mrs. R. S. Shainwald
Mrs. Nelson Towne Shaw
Mrs. A. H. Shearer
Mrs. Fred R. Sherman
Mrs. Francis Shook
Mrs. Stauffer Sigall
Mrs. Rose Silver
Mr. Charles W. Slack
Mrs. Leon Sloss, Jr.
Mrs. Leon Sloss
Mrs. Louis Sloss
Judge and Mrs. M. C. Sloss
Mrs. Josephine A. Smith
Capt. G. W. Somers
Mrs. Warren Spieker
Mrs. Robert Gordon Sproul
Mrs. E. B. Stanwood
Mr. and Mrs. B. V. Sturdivant
Mrs. John A. Sutro
Mrs. Oscar Sutro, Jr.
Mr. Louis Sutter
Mrs. Alfred B. Swinerton
Miss June Tanzer
Mrs. F. F. Thomas, Jr.
Mrs. Myron I. Thomas
Mrs. Miller Thomlinson
Miss Barbara B. Thompson
Mrs. Joseph Tobin
Mr. Ernest J. Torregano
Mrs. Nlon Tucker
Mrs. John R. Upton
Mrs. Sidney M. Van Wyck
Mr. Paul Verdier
Mr. Daniel Volkmann
Mrs. Norman Waggoner
Mrs. Ward Walkup
Mrs. Clarence R. Walter
Mrs. John I. Walter
Mrs. Lingan Warren
Mrs. Helen B. White
Mr. H. G. White
Mrs. Millard C. White
Mrs. Frederick C. Whitman
Mr. Stephen Williams
Mrs. Theodore Wores
Mrs. Clarence Young
Mrs. V. Zaruba
Mrs. Harold L. Zellerbach
Mr. Edgar T. Zook</p> |
|---|---|---|

An Instrument worthy of the Name

"Beyond any shadow of a doubt, it surpasses anything I have heard in regard to tone quality, reliability, and appearance," says DAVID HALL, author of *The Record*

Book, monumental record-collector's reference book. Write for your copy of the unusual brochure: "How to Judge a High Quality Radio-Phonograph."

Philharmonic

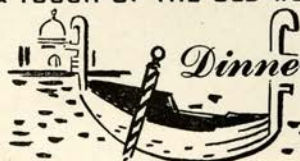
RADIO-PHONOGRAPH



*Trade Mark

Philharmonic Radio Corporation, Dept. 14, 528 East 72nd Street, New York

A TOUCH OF THE OLD WORLD



Dinners at **VENETO**
are a gourmet's delight!

Delicious salads... slow-simmered, rich soups
and tender, succulent meats and vegetables

389 BAY AT MASON • GARFIELD 9711

*She is naturally proud
of her beautiful things—*

... Because they reflect good taste,
discrimination and are truly fine examples
of traditional Sloane craftsmanship.

W & J Sloane
SUTTER near GRANT



CONTRIBUTORS TO 1944 SEASON

Amberg-Hirth
 Constant J. Auger
 Baldwin Piano Company
 Blue Network Co., Inc.
 Blum's
 Borden's Dairy Delivery Co.
 Bullock & Jones
 Davis-Schonwasser
 City of Paris
 City Transfer & Storage Co.
 Columbia Concerts, Inc.
 The Emporium
 Julius Eppstein Florists
 Fairmont Hotel
 Fox West Coast Theatres
 Goldstein & Company
 Granat Bros.

Gump's
 Hale Bros.
 Hastings
 Ernest Hirsch
 Hotel St. Francis
 Joseph's Florists
 Carolyn Kelsey
 KJBS
 K. H. Lengfeld
 H. Liebes & Company
 Livingston Bros.
 Carl D. Lovotti
 Mr. & Mrs. Grover A. Magnin
 I. Magnin & Company
 Joseph Magnin
 Maison Mendessolle
 Mark Hopkins Hotel
 Merrill's Drug Center

V. C. Morris
 Musicians' Union, Local No. 6
 National Broadcasting Co.
 O'Connor, Moffatt & Co.
 Palace Hotel
 Pisani Ptg. & Pub. Co.
 Podesta & Baldocchi
 Ransohoffs
 Roos Bros.
 Schneider Bros.
 Sherman, Clay & Company
 Shreve & Company
 Sommer & Kaufmann
 Standard Oil Company
 Weinstein & Company
 The White House
 Yellow Cab Company



World famous personalities, epicures and gourmets acclaim George Mardikian's cuisine. Lamb Shish Kebab with Pilaff — Rolled, stuffed Grape Leaves — Rose Petal Ice Cream!

Dinner and a la carte, cocktails. Open from 4:00 P. M. till midnight.

Every night is celebrity night.

FAMOUS GEORGE MARDIKIAN at
Omar Khayyam's

O'FARRELL STREET AT POWELL

HOTEL CANTERBURY

750 SUTTER ST. • SAN FRANCISCO

Excellent dining room

This distinguished hotel is convenient to every downtown attraction. Rooms are finely appointed, all with bath.

Madame Arpiné Inayetian

Former Associate Alfred Cortot, Paris

Piano Technique and Interpretation — All Grades

243 - 27TH AVENUE, SAN FRANCISCO • TELEPHONE EVERGREEN 3070

GIFTS *that say "I'm thinking of YOU"*

Orchid Ceramic Pins and Earrings . . . Smocks for House and Victory Garden wear . . . "Good Luck Pixies" — the little figurines that really work wonders. 1000 suggestions.

THE NATALIE SHOP

12 TILLMAN PLACE
 Bet. Sutter & Post Sts.
 Off Grant Avenue . . .
 Phone: DOUGLAS 1502



THE
CLIFT
HOTEL

SAN FRANCISCO



Home of the famous
REDWOOD ROOM
Geary at Taylor



Los Angeles' finest address. Garden
swimming pool and tennis court.

The Town House
LOS ANGELES

Visit

The

New

POWELL'S
Smart Apparel

51 Grant Avenue

A Smart Shop
For Junior Sizes

The **DRUNKARD**

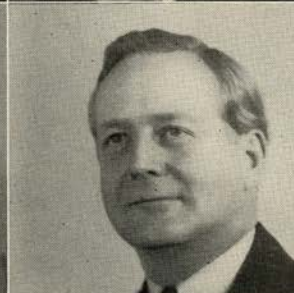
3rd Year in San Francisco

**DO NOT MISS THE BIGGEST
LONG RUN SHOW OF
THE CENTURY!**

Will Close 29th
of this month

•
*Don't be left out—make
your reservations now!*

•
**OPERA BOX OFFICE, CITY OF PARIS
or THEATRE, BUSH ST. MUSIC HALL,
ORdway 1109**



*Reading from
left to right*

Goodwin
De Lugg
Vannucci
Lorenzini

Tallone
Karpelena
Alibertini
Levon

Heitman
Wellman

Markham
Berton

Guenter
Bernhard
Wahlin
Schmidling

Martin
Jacobs
Sanders
Doan

Gianopoulos
Nelson

ARTISTS OF
San Francisco
OPERA COMPANY



SAN FRANCISCO OPERA GUILD MEMBERS

Addenda

Miss Edith E. Allyne	Mr. and Mrs. Grover A. Magnin	Mr. W. G. Thornton
Miss Lucy H. Allyne	Mrs. Charles O. Martin	Mrs. M. C. Threlkeld
Mr. T. E. Ambrose	Mrs. Howard Meadows	Dr. and Mrs. Harold Trimble
Miss Lillian Armsby	Mrs. Julian J. Meyer	Mrs. John S. Adler
Mrs. Leonora Wood Armsby	Mrs. Earl D. Minton	Mrs. R. M. Alvord
Mrs. Edward F. Barron	Mrs. Hans Nelson	Mrs. Samuel Bauer
Mr. Irving Bartel	Mr. John Francis Neylan	Mr. and Mrs. F. N. Belgrano, Jr.
Mrs. Charles Beardsley	Mrs. William H. Noble	Mrs. George Edwin Bennett
Mr. S. D. Bechtel	Miss Anna C. O'Brien	Mrs. Dikran M. Berberian
Mrs. James Hall Bishop	Mrs. Warren Olney, Jr.	Mrs. E. Bianco
Mr. and Mrs. Charles R. Blyth	Mr. Aram Poladian	Miss Nina Boyle
Mrs. T. J. Brennan	Miss Eva Powell	Mrs. Worthen Bradley
Mrs. B. J. Brun	Mrs. Carl Raiss	Mrs. Cabot Brown
Mrs. Edward J. Buckley	Mrs. William P. Roth	Dr. Edward John Buckley
Mrs. Arthur B. Cahill	Mr. James H. Schwabacher	Mrs. Edna W. Buckwalter
Mrs. John R. Cahill	Mr. R. O. Simon	Mrs. Betty Cohn
Mr. R. A. Cleaveland	Mrs. Ralph J. L. Stern	Mrs. Joseph J. Coney
Mr. Newton Booth Coghill	Mrs. Sigmund Stern	Dr. and Mrs. Frederick C. Cordes
Mrs. B. Hardin Corbin	Mr. and Mrs. Jerd Sullivan	Miss Mary Cook Cowder
Mrs. Emile F. Cuenin	Mr. George C. Thierbach	Mrs. John Jewett Earle
Mrs. Cornelius J. Dall	Mrs. Edward Topham, Jr.	Miss Lucile Eising
Miss Florence Dean	Mrs. James W. Towne	Mrs. Harold E. Faber
Mrs. Frank P. Deering	Mr. Leslie R. Wilson	Mrs. Henry B. Friedrichs
Mrs. R. J. Dietrick	Mrs. Mary E. Wilson	Mrs. Algernon Gibson
Mrs. A. G. Dondro	Miss Barbara Urba Winkler	Mrs. A. H. Goldstone
Mr. Richard E. Doyle	Dr. Dorothy A. Wood	Mrs. Morgan A. Gunst
Miss Margaret L. Ely	Mr. and Mrs. George	Mrs. Abraham Haas
Miss Marian W. Ewes	Washington Baker, Jr.	Mrs. Timothy Hayes
Mr. Lionel W. Feigenbaum	Mr. and Mrs. R. I. Bentley, Jr.	Miss Marian Huntington
Mr. and Mrs. W. Parmer Fuller, Jr.	Mrs. Walter H. Bentley	Dr. Herbert G. Johnstone
Nellie Gaffney	Dr. Walter H. Brown	Mrs. Edward D. Keil
Miss Naida Gilmore	Mrs. Edith DeLee	Mr. Philip N. Lienthal, Jr.
Mrs. Joseph Grace	Mr. Charles Flammer	Mr. R. L. Litchfield
Mrs. Horace Guittard	Mr. Angelo Fusco	Mrs. Norman Livermore
Mrs. Randolph Hale	Miss Jane Goodfellow	Miss Ann M. Lovejoy
Mrs. William L. Halfpenny	Mrs. D. H. Grubb	Mrs. William Palmer Lucas
Mrs. John Lindsay Hanna	Mrs. Robert Hotle	Miss Marjorie Miller
Mrs. L. W. Harris	Mrs. Walter S. Johnson	Mrs. Joseph A. Moore
Mrs. Elystus Lyon Hayes	Mr. Percy L. King	Dr. W. H. Murphy
Mr. Benjamin H. Hicklin	Mr. A. J. Kirkpatrick	Mrs. John Archibald Newcomb
Mrs. Fentress Hill	Miss Frances Kosta	National Broadcasting Company
Mr. John W. Hopkins	Mrs. A. Lendle	Mrs. A. Leslie Oliver
Mrs. Thomas R. Hughes	Mrs. T. R. McCarron	Mrs. R. F. Paine
Mrs. Elizabeth Jongeneel	Mrs. Randolph W. Martenot	Mrs. Hall Roe
Mrs. T. Henshaw Kelly	Mrs. William H. Nolan	Mr. John N. Rosekrans
Mrs. John B. Knox	Mrs. Ashton Potter	Alice Seckels
Mrs. Lewis H. Lapham	Mr. A. S. Russell	Mrs. Walter Sedgley
Miss Rena Lazelle	Miss Violet V. Schoning	Mrs. George D. Smith
Mr. Felix A. Lenhart	Mr. Frederic R. Sherman	Mr. Jack Soderlund
Miss Elvira LeStrange	Mrs. Henry J. Siegler	Mrs. Powers Symington
Miss Louise Lovell	Mrs. Melville L. Smith	Mrs. Alfred S. Tubbs
Mrs. Decker McAllister	Mrs. Lawrence Strassburger	Mrs. Richard Walker
Mrs. John McGaw		Mr. Michel D. Weill

KSFO "560 ON YOUR DIAL"

DEDICATED
IN THE INTEREST OF
PUBLIC SERVICE

STUDIOS "ATOP NOB HILL"

HOTEL MARK HOPKINS

FILL THE WAR CHEST



BUY WAR BONDS

★

Fine Antiques

★

*Excellent
Craftsmanship*

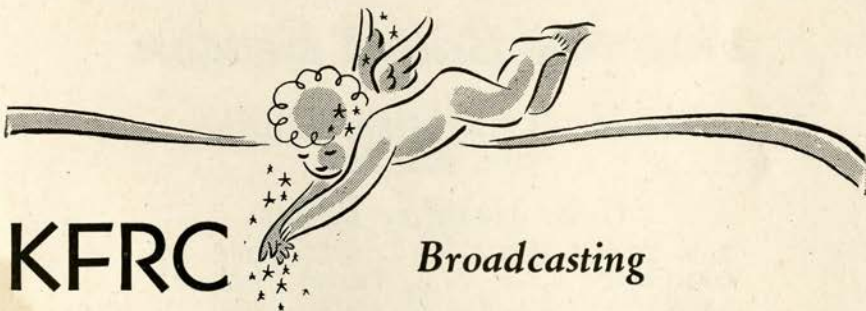
★

K. H. LENGFELD

Interior Decorator

★

1409 SUTTER STREET, SAN FRANCISCO



KFRC

Broadcasting

The

SAN FRANCISCO OPERA SERIES

Evening performances — 10 p. m.

Sept. 29 • Oct. 5, 6, 11, 13, 17, 18, 20, 26, 27, 28

Sunday afternoons — 4 p. m. • Oct. 1, 8, 22

MUTUAL-DON LEE

610 ON YOUR DIAL

THE SAN FRANCISCO BALLET GUILD

MRS. JUILLARD McDONALD, *Pres.*

Announces

San Francisco Ballet

WILLAM CHRISTENSEN
Artistic Director

HAROLD CHRISTENSEN
Ballet School Director

REYNOLD WIGGINS
Business Manager

SEASON 1944-1945

with

SAN FRANCISCO OPERA

SEPT. 29 — NOV. 5



Second Annual Holiday Ballet Season

Children's Christmas Matinee

SUN., Dec. 24

Gala Holiday Ballet

SAN FRANCISCO - - - WED., DEC. 27
OAKLAND - - - THURS., DEC. 28
SACRAMENTO - - - FRI., DEC. 29
STOCKTON - - - SAT., DEC. 30



Transcontinental Tour

The Ballet leaves San Francisco Feb. 1st for an extended tour
returning May 1st

for the

Spring Ballet Homecoming

(Date to be announced)

Tickets for Holiday Ballet On Sale Normandy Lane Box Office. EX 8585

"In the eyes of the law"

Your Will, to you, may be a very personal matter, close to your heart.

But "in the eyes of the law" a Will is a formal, *legal document*, subject to strict legal interpretation.

Knowing this, a prudent man goes with his plans and purposes to his attorney so his Will can be drawn *in legal terms*; and thereafter reviews it periodically with his attorney to keep its provisions up to date.

By taking these simple precautions, he safeguards the interests of those he is most anxious to protect.

An officer of our Trust Department will be glad to advise with you and your attorney.

TRUST DEPARTMENT

Wells Fargo
Bank & UNION TRUST CO.

SAN FRANCISCO • 20

Market at Montgomery • Market at Grant Ave.

Established 1852

Member F. D. I. C.



FOR YOUR FIGHTING MAN
BUY MORE BONDS

Head and Shoulders

OVER OTHERS

FOR MILDNESS... FOR BETTER TASTE

And as sure as night follows day... Chesterfield's definitely Milder Better Taste is the result of their...

**RIGHT COMBINATION
WORLD'S BEST TOBACCOS**

Make these 5 Key-words the key to your Smoking Pleasure, as they are for millions everywhere.

ASK FOR -

CHESTERFIELD