

Salome

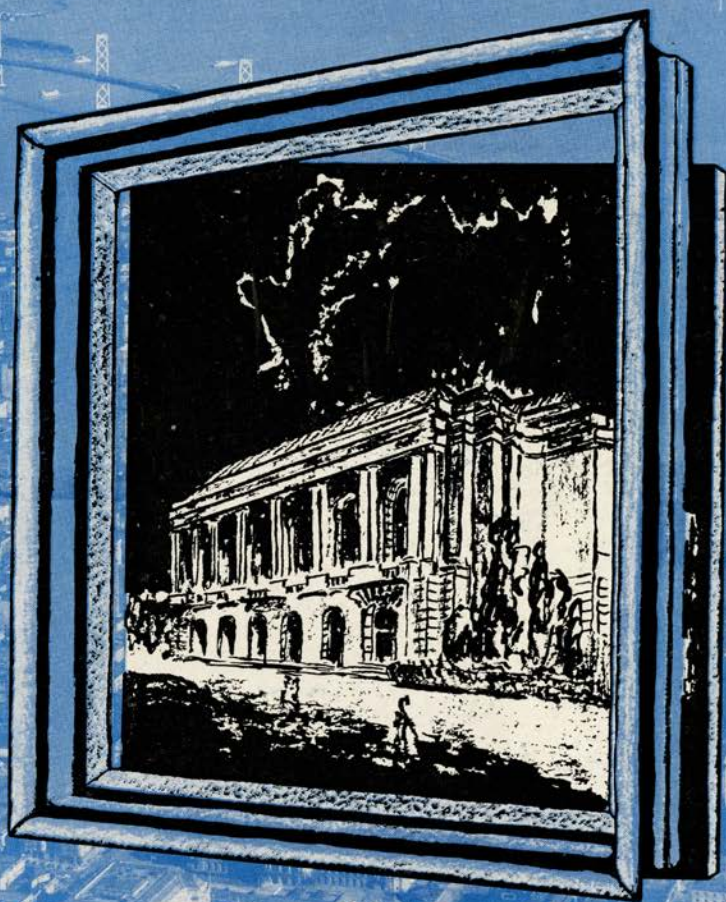
1944

Thursday, October 19, 1944 8:30 PM

SFO\_PUB\_01\_SFO\_1944\_14

Publications Collection

San Francisco Opera Archives



*Twenty-second Annual Season*

**SAN FRANCISCO OPERA ASSOCIATION**

GAETANO MEROLA, *General Director*

**WAR MEMORIAL OPERA HOUSE**

**SEPTEMBER 29 TO OCTOBER 28, 1944**





*G. Adrian*

ORIGINAL

*Gown Salon*

*Third Floor*



*It Stands Alone*

## KORBEL BRUT IS TOPS IN AMERICAN CHAMPAGNE

Magazines which reach the most sophisticated audience in the United States unanimously give first place in American Champagnes to KORBEL BRUT  
WE didn't say it first! THEY DID!

"THE BEST AMERICAN CHAMPAGNE to date is KORBEL BRUT. Our guess is anyone would think it was imported."  
—Harper's Bazaar, February, 1941.

"PROBABLY THE MOST CHAMPAGNE-LIKE domestic wine is KORBEL BRUT."  
—Cue Magazine, December 20, 1940.

"THE OUTSTANDING AMERICAN CHAMPAGNE to date is KORBEL BRUT."  
—Town and Country, February, 1941.

"EXTREMELY ENJOYABLE, bone-dry and clean-tasting."  
—The New Yorker, March 15, 1941.

"AMONG THE FEW FINE CALIFORNIA CHAMPAGNES IS KORBEL BRUT—a special cuvee which has been made as dry as the dryest Champagnes for the English market."  
—St. Regis, Peacock Alley, The Ambassador, Plaza En Passant, The Savoyard, The Ritz Carlton, The Hampshire, The Sherry-Netherlands, Pierrot, January, 1941.

**K O R B E L**    **BRUT**    **ROUGE**  
                         **SEC**            **PINK**

Distributed by

**TRADERS DISTRIBUTING CO.**  
314 FRONT STREET, SAN FRANCISCO, CALIFORNIA

**21 BRANDS, INC.**

17 E. 52nd ST., NEW YORK CITY



Impartial Information  
Thorough Analysis  
Experienced Judgment  
Complete Facilities  
*....for Investors*



**DEAN WITTER & CO.**

NEW YORK STOCK EXCHANGE

SAN FRANCISCO STOCK EXCHANGE

**R**ECORDS of all the music you want at Sherman, Clay's many Pacific Coast music stores. Records of operas and operatic selections, of symphonies, of artists of today and yesterday. Records of dance bands sweet and hot, mood music of every kind. Records for the young set, for the sophisticates, for music lovers, for sentimentalists. Records for children, for students . . . records of every character and description here for you at Sherman, Clay & Co.



**Sherman  Clay**

8 PACIFIC COAST STORES SAN FRANCISCO OAKLAND  
SACRAMENTO SAN JOSE • FRESNO PORTLAND SEATTLE

# Pedro Domecq wears a White Tie

No formal dinner party would be right without white ties and formal gowns. Nor would it be quite correct without wine—a glass of fine Amontillado, Domecq's Selecto, with the soup, a table wine with the entree, and a mellow, golden cream Sherry, Domecq's Celebration Cream, with the dessert.

Ask your dealer to show you Pedro Domecq's range of Sherries. Your cellar without a noble Sherry like Domecq would be as incomplete as your wardrobe without evening clothes.

COMEX WINE & SPIRITS, INC.

New York City

San Francisco

Bottled in Jerez, Spain. Alcohol 18 to 20% by volume



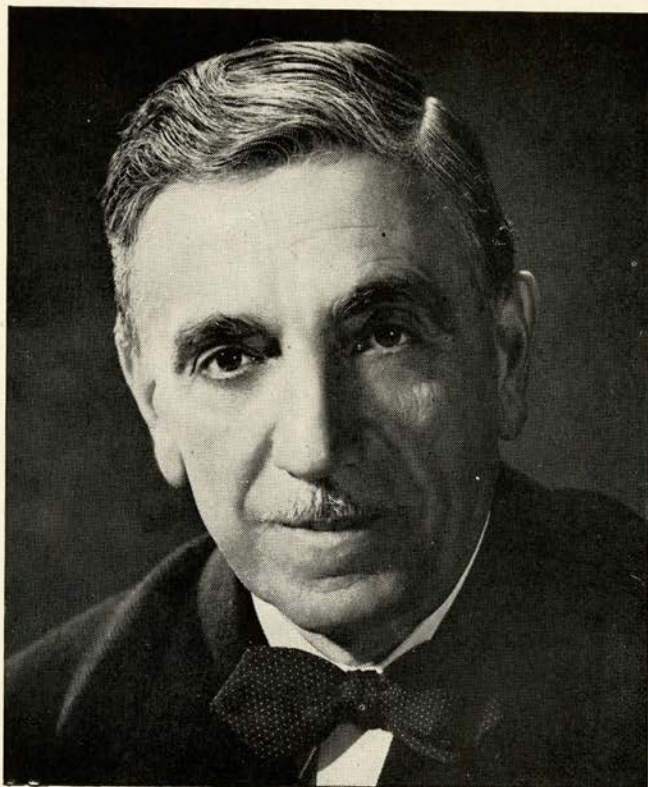
---

COCKTAIL BAR IN BASEMENT PROMENADE  
SERVICE ALSO ON DRESS CIRCLE AND MEZZANINE

---

Served at the Opera House BUFFET





★ ★ ★ ★ ★ ★ ★ ★ ★ ★ ★ ★ ★ ★ ★ ★

## GAETANO MEROLA

GENERAL DIRECTOR

This is the San Francisco Opera Company's 22nd Annual Season, its third war time season, and it is fitting that its friends pause a moment to take stock of the past and the present.

We can well be proud of twenty-two unbroken years of opera. On October 15, 1932, the War Memorial Opera House was dedicated by the opening performance of the 10th Season.

In the fall of 1941, the San Francisco Opera Company's annual tours to Sacramento, Los Angeles and Pasadena were extended to include Portland and Seattle.


It is estimated that since the inception of the San Francisco Opera Company twenty-two years ago, approximately 3,000,000 persons have attended its performances.

This season, notwithstanding war time conditions, the Opera Association will achieve its long sought desire to be truly the source of grand opera enjoyment of the entire west, through the broadcast of fourteen performances over thirty-eight stations of the Don Lee Mutual Broadcasting System.

We are grateful to Safeway Stores, the sponsor of these broadcasts, and we are sure that millions of listeners will join us in this formal expression of appreciation.

SAN FRANCISCO OPERA ASSOCIATION





AS SEEN IN

*Vogue*

FOREVER YOURS...the matchless beauty and distinction of your  
Granat Perfect Blue-White Solitaire Diamond, with its handmade  
Tempered Mounting,\*as seen In VOGUE. Choose from a nationally  
renowned collection of these exclusive creations...\$100 to \$1,000  
and more...at America's Largest Manufacturing Retail Jewelers.

★ TRADE MARK OF GRANAT BROS

*Granat Bros*  
SHREVE TREAT & EACRET

O F F I C E R S



★ ★ ★ ★ ★ ★ ★ ★ ★ ★ ★ ★ ★ ★ ★ ★

**KENNETH MONTEAGLE**  
PRESIDENT

**MRS. STANLEY POWELL**  
VICE-PRESIDENT

**ARTHUR MERRILL BROWN, JR.**  
VICE-PRESIDENT

**CHARLES R. BLYTH**  
VICE-PRESIDENT

**GEORGE T. CAMERON**  
TREASURER

**EDWARD F. MOFFATT**  
SECRETARY

**BOARD OF DIRECTORS**

GEORGE WASHINGTON BAKER, JR.  
CHARLES R. BLYTH  
ARTHUR MERRILL BROWN, JR.  
GEORGE T. CAMERON  
WILLIAM W. CROCKER  
MORTIMER FLEISHHACKER

TIMOTHY HEALY  
KENNETH MONTEAGLE  
JOHN FRANCIS NEYLAN  
MRS. STANLEY POWELL  
MRS. HENRY POTTER RUSSELL  
NION R. TUCKER

**EXECUTIVE STAFF**

**PAUL POSZ**  
BUSINESS MANAGER

HOWARD G. HANVEY - CURRAN SWINT  
PUBLICITY

ARTHUR FRAHM-LALIA DECKER-PHYLLIS AMATI  
TICKET SALES

EVELYN CROCKETT-GERALD G. ROSS  
OFFICE SECRETARIES





*Willat* **COLD PERMANENT WAVE**

HEATLESS PERMANENT WAVE, 1022 FOLSOM ST., SAN FRANCISCO 3, CALIF.

*Chic* . . . is the word for it.  
**a willat cold permanent wave**

Discriminating San Francisco women know that a Willat Cold Permanent Wave will help their hair to look its very smartest on First Nights at Theatre and Opera. Enjoy this cold permanent wave the next time you visit your favorite beauty salon and have a complimentary test curl to show you just how lovely your hair will look with a Willat Cold Permanent Wave.

FOR SOFT, LOVELY CURLS TRY A WILLAT WANDA WAVE. TRULY A  
MIRACLE WAVE...SO LOVELY, SIMPLE AND QUICK. WILLAT CIRCULETTE  
WAVE. THE DELUXE WAVE THAT'S SPRAYED INTO YOUR HAIR.



## BOARD OF GOVERNORS

GEORGE WASHINGTON BAKER, JR.	REUBEN B. HALE	MRS. JOHN FRANCIS NEYLAN
P. A. BERGEROT	MRS. LAWRENCE W. HARRIS	JOHN FRANCIS NEYLAN
CHARLES R. BLYTH	J. EMMET HAYDEN	ETTORE PATRIZI
J. BRENDAN BRADY	TIMOTHY HEALY	RALPH L. PHELPS
H. SEWALL BRADLEY	EDWARD D. KEIL	MRS. M. C. PORTER
ARTHUR MERRILL BROWN, JR.	CHARLES H. KENDRICK	MRS. STANLEY POWELL
GUIDO CAGLIERI	MRS. MARCUS S. KOSHLAND	STANLEY POWELL
MRS. GEORGE T. CAMERON	LEWIS A. LAPHAM	ANGELO J. ROSSI
GEORGE T. CAMERON	MRS. STINE LEIS	MRS. HENRY POTTER RUSSELL
CHARLES A. CHRISTIN	J. B. LEVISON	A. SBARBORO
TEMPLETON CROCKER	MISS EDITH LIVERMORE	FRED R. SHERMAN
WILLIAM W. CROCKER	M. E. LOMBARDI	PAUL SHOUP
GEORGE E. CROTHERS	MISS RUTH W. LORING	MRS. M. C. SLOSS
MRS. FRANK P. DEERING	MISS SALLIE MAYNARD	RALPH J. A. STERN
MISS MARY C. DUNHAM	WILLIAM GLADSTONE MERCHANT	MRS. SIGMUND STERN
SIDNEY M. EHRMAN	MRS. C. D. G. MILLER	MRS. DAVID ARMSTRONG TAYLOR
MRS. WILLIAM M. FITZHUGH	ROBERT W. MILLER	M. C. THREKELD
MORTIMER FLEISHHACKER	EDWARD F. MOFFATT	NIDON R. TUCKER
A. P. GIANNINI	KENNETH MONTEAGLE	RANDOLPH C. WALKER
RANDOLPH HALE	GUIDO MUSTO	WHITNEY WARREN, JR.



## WAR MEMORIAL OPERA HOUSE

(OWNED AND OPERATED BY THE CITY AND COUNTY OF SAN FRANCISCO  
THROUGH THE BOARD OF TRUSTEES OF THE WAR MEMORIAL)

### BOARD OF TRUSTEES

GUIDO J. MUSTO PRESIDENT	CHARLES G. KLEUPFER VICE-PRESIDENT	WALTER A. LEONETTI
SIDNEY M. EHRMAN	DAN S. HEWITT	FELIX S. MCGINNIS
ALVIN GERLACK	J. BRUCE JONES	HARRY A. MILTON
WILBUR A. HENDERSON		RALPH J. A. STERN
EDWARD SHARKEY MANAGING DIRECTOR OF THE WAR MEMORIAL	IRA G. THOMPSON SECRETARY TO THE BOARD OF TRUSTEES	

---

*Buffet Service in Basement Promenade and Dress Circle during all performances*

---

LIBRETTOS AND OPERA GLASSES IN FOYER · HEAD SETS FOR THE DEAF ARE  
AVAILABLE AT TABLE IN MAIN FOYER · ATTENDANT WILL CONNECT  
WITH SEAT LOCATION UPON REQUEST · FOR LOST AND FOUND  
INFORMATION, INQUIRE AT CHECK ROOM NO. 1  
WILLIAM A. MEADE, DIRECTOR OF HOUSE SERVICE



## AIR RAID PRECAUTIONS

The Opera House is "blacked out" and all facilities have been inspected and approved by Civilian Defense authorities. As an additional factor for your safety, trained Air Raid Wardens are on duty during performances  
**PLEASE OBEY ALL INSTRUCTIONS OF THE AIR RAID WARDENS**



Rent  
**Exercycle**  
Electrically Operated  
Relaxing Exercise

CALL  
**EXERCYCLE CO.**  
455 POWELL STREET  
SAN FRANCISCO  
YUkon 1456



# SAN FRANCISCO OPERA COMPANY

GAETANO MEROLA  
GENERAL DIRECTOR

ARMANDO AGNINI  
STAGE AND TECHNICAL DIRECTOR

KURT HERBERT ADLER  
CHORUS DIRECTOR

ETIENNE BARONE  
ASSISTANT STAGE DIRECTOR

WILLAM CHRISTENSEN  
BALLET MASTER

JESSIE KEENE  
PRODUCTION SECRETARY



## CONDUCTORS and ASSISTANTS

GAETANO MEROLA

PIETRO CIMARA

NADUM BLINDER  
CONCERT MASTER

WILLIAM STEINBERG

KARL RIEDEL OTELLO CIRONI

ANTONIO DELL'OREFICE

GEORGE SEBASTIAN

KURT HERBERT ADLER

JULIUS HAUG  
LIBRARIAN

## ARTISTS

LICIA ALBANESE  
SOPRANO

EVARISTO ALIBERTINI  
BARITONE

LORENZO ALVARY  
BASS

ALICE AVAKIAN  
CONTRALTO

SALVATORE BACCALONI  
BASS

ALTON BERNHARD  
TENOR

ANTHONY BERTON  
TENOR

LELIA CAMBI  
SOPRANO

GEORGE CEHANDOVSKY  
BARITONE

VIVIAN DELLA CHIESA  
SOPRANO

HARRY DE LUGG  
TENOR

ALESSIO DE PAOLIS  
TENOR

LILY DJANEL  
SOPRANO

PHILIP DOAN  
TENOR

JOHN GARRIS  
TENOR

GEORGIA GIANOPULOS  
SOPRANO

HERTA GLAZ  
CONTRALTO

CHARLES GOODWIN  
BASS

PAUL GUENTER  
BARITONE

MARGARET HARSHAW  
CONTRALTO

ELMA HEITMAN  
SOPRANO

MARY BELLE JACOBS  
SOPRANO

FREDERICK JAGEL  
TENOR

RAOUL JOBIN  
TENOR

HELENE KARPELENIA  
SOPRANO

CHARLES KULLMAN  
TENOR

BRUNO LANDI  
TENOR

KATHLEEN LAWLOR  
SOPRANO

NEVART LEVON  
SOPRANO

MAX LORENZINI  
BARITONE

VIRGINIA MACWATTERS  
SOPRANO

MARY HELEN MARKHAM  
SOPRANO

BENJAMIN MARTIN  
BARITONE

ROBIN NELSON  
BARITONE

JAN PEECE  
TENOR

IVAN PETROFF  
BARITONE

EZIO PINZA  
BASS

LILY PONS  
SOPRANO

STELLA ROMAN  
SOPRANO

W. VERNON SANDERS  
BASS

ALLEN SCHMIDLING  
TENOR

JOHN SHAFER  
BARITONE

ROBERTO SILVA  
BASS

RISE STEVENS  
SOPRANO

GEORGE TALLONE  
TENOR

HUGH THOMPSON  
BARITONE

JOSEPH TISSIER  
TENOR

CLARAMAE TURNER  
CONTRALTO

FRANCESCO VALENTINO  
BARITONE

ALBERT VANNUCCI  
TENOR

THELMA VOTIPKA  
SOPRANO

FRED WAHLIN  
BASS

LEONARD WARREN  
BARITONE

EDWARD WELLMAN  
BARITONE





*Pierre, Foreman of Beaulieu Vineyard Number Two.*

In the heart of Napa Valley, where soil and climate are congenial for the wine grape, the tradition of fine wine-making is being kept alive by the skill of Beaulieu vintners. Grapes of the finest, light-bearing varieties, allowed to develop in small casks and in the bottle, yield their delicate flavor to the fine wines of Beaulieu Vineyard. You will experience the same pride in serving them at your table, as the Beaulieu vintners take in making them.



*Quality not Quantity*

IS THE DISTINGUISHING MARK OF

*Beaulieu Vineyard*

**BV**

*Beaulieu Vineyard*

**Vineyards and Winery: Rutherford, Napa Co., Calif.**

**Offices: 300 Montgomery St., San Francisco 4, Calif.**

**Since 1900**

*Pay for your American Citizenship • Buy War Bonds*





PONS



JOBIN



ALBANESE



PINZA



ROMAN



KULLMAN



STEVENS  
LANDI



PEERCE  
GLAZ



DELLA CHIESA



☆  
**ARTISTS OF**  
*San Francisco*  
**OPERA COMPANY**





San Francisco Tradition

BEFORE THE OPERA  
... Dine in the exquisite Garden Court

AFTER THE OPERA  
... Dance in the Rose Room to the music of

JAN SAVITT  
and his orchestra

The  
**PALACE HOTEL**  
EDMOND A. RIEDER, General Manager



This is one way to make clothes last  
a long time.

A more practical method is to buy  
things made of Bemberg\* rayon.

\*BEMBERG is the registered trade-mark of AMERICAN BEMBERG CORPORATION



WARREN



DJANEL



JAGEL



BACCALONI



HARSHAW



VALENTINO



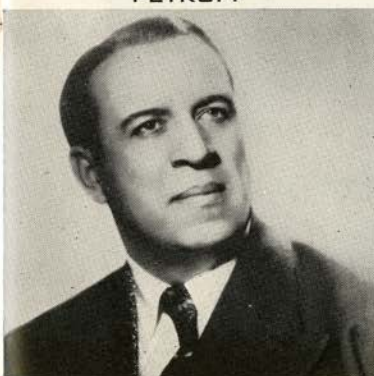
SILVA  
PETROFF



CEHANDOVSKY  
MACWATTERS



ALVARY



☆  
ARTISTS OF  
*San Francisco*  
OPERA COMPANY  
☆





Miss Ruby Asquith, Ballerina . . . S. F. Ballet Company

427 Post Street  
(In the St. Francis Hotel)  
YU kon 2061

*Nicholas Johnston*

MASTER PHOTOGRAPHER

## CHORAL ENSEMBLE

MISSES		MESSRS.	
VIOLET AURAND	MARY BELLE JACOBS	EVARISTO ALIBERTINI	MAX LORENZINI
VIRGINIA BELLINGER	HELENE KARPELENIA	ALBERT BARRETT	AUGUST LORENZO
BIANCA BRUNI	LUCILLE KIRTLEY	ALTON BERNHARD	ALLAN LOUW
LORRAINE CALCAGNO	KATHLEEN LAWLOR	ANTHONY BERTON	GIULIO MANCINI
LELIA CAMBI	NEVART LEVON	LOUIS BRAUNSTEIN	BENJAMIN MARTIN
ELIZABETH CASE	DOROTHY MC INTYRE	SEBASTIAN CAMPAGNA	CARLO MANNUCCI
ELEANOR CORYELL	MARY HELEN MARKHAM	GALLIANO DANELUZ	ROBIN NELSON
SEDA DER GARABEDIAN	DELPHIA PHILLIPS	KENNETH DAVIES	LLOYD PEASE
BARBARA FRITZ	MARY RHETT	FLOYD DAVIS	WILLIAM PETERSON
GEORGIA GIANOPULOS	ELIZABETH JANE SANDERSON	LORENZO DE BEAL	W. VERNON SANDERS
DALE GOODWIN		AMERIGO DEL GRANDI	ALLEN SCHMIDLING
ELMA HEITMAN	MARY LEE SMITH	HARRY DE LUGG	BRUCE STEWART
ROSE AGNES HERSCH	VERA SOLAX	ARTHUR DE MASI	GEORGE TALLONE
ORTHELLA HUGHES	CLARAMAE TURNER	PHILIP DOAN	ALBERT VANNUCCI
		WILLIAM GORMAN	EDWIN VANNUCCI
		PAUL GUENTER	FRED WAHLIN
			EDWARD WELLMAN

DORA DE TANO, ACCOMPANIST

## BALLET

RUBY ASQUITH, PREMIER DANSEUSE

EARL RIGGINS, PREMIER DANSEUR

### SOLOISTS

### PRINCIPAL DANCERS

MISSES	MISSES	MISSES	MESSRS.
DELENA CUMMINGS	LOIS TREADWELL	HOPE LINTZ	JOAQUIN FELCH
MATTLYN GEVURTZ	JOCELYN VOLLMAR	JYMMI RIEDEL	ROBERT HANSEN
ROSALIE PROSCH	ONNA WHITE	PEGGY SWIFT	RUSSELL HARTLEY
		WANA WILLIAMS	FRANK NELSON
		KATHERINE BEATTIE	ROBERT THORSON
		GINA CHAPPELL	

### CORPS DE BALLET

MISSES	MISSES	MISSES	MISSES
GENEVIEVE ASONOVITCH	VERA GOLD	JACKIE LA FETRA	EDWINA NOBLE
BARBARA BADERTSCHER	ANTOINETTE GUHLKE	SALLY WHALEN	VIRGINIA POOLE
BONNIE BELL	HELENA HENDERSON	JUNE WILSON	JOAN VICKERS
JOAN BENNET	NANCY JACOBSON	FIALA MRAZ	

### PRODUCTION

JULIAN DOVE—FRITZ KRAENKE  
Scenic Artists

EARL MCGUIRE  
Master Carpenter

CHARLES J. HOLZMUELLER  
Master Electrician

JOHN T. HEAVEY  
Master of Properties

### FOR WAR MEMORIAL OPERA HOUSE

S. E. SIMMONS  
Master Carpenter

EDWARD J. ZETTEL  
Master Electrician

CLAUDE L. WAGGONER  
Master of Properties

### COSTUMES AND WIGS BY GOLDSTEIN & CO.

ALEXANDER AGNINI  
Wardrobe Master

INEZ DODSON  
Wardrobe Mistress

SUE MCGOWAN  
Hairdresser

EVERETT MASON  
Chief of Makeup

### PROGRAM

PISANI PRINTING & PUBLISHING COMPANY, PUBLISHERS, DESIGNERS AND PRINTERS





**ACME**

..the beer with the  
high I.Q. (It Quenches!)



ACME BREWERIES San Francisco • Los Angeles



# Repertoire

## REGULAR SERIES

- AIDA (*Verdi*) . . . . . Friday Night, September 29, at 8:00  
 With Roman, Harshaw, Jagel, Warren, Pinza, Alvary, De Paolis, Votipka.  
 MEROLA, Conductor
- MARTHA (*von Flotow*) . . . . . Tuesday Night, October 3, at 8:15  
 With Albanese, Glaz, Landi, Alvary, Baccaloni, Goodwin, Lawlor, Gianopulos, Levon,  
 Cambi, Martin, Wahlin, Guenter, Doan, A. Vannucci. MEROLA, Conductor
- LAKME (*Delibes*) . . . . . Friday Night, October 6, at 8:30  
 With Pons, Jobin, Cehanovsky, Silva, Glaz, Votipka, Karpelenia, Avakian, Garris, Martin,  
 De Lugg, Tallone. CIMARA, Conductor
- MANON (*Massenet*) . . . . . Tuesday Night, October 10, at 8:30  
 With Albanese, Kullman, Valentino, Alvary, De Paolis, Cehanovsky, Levon, Bernhard,  
 Wellman. CIMARA, Conductor
- THE SECRET OF SUZANNE (*Wolf-Ferrari*) . . . . . Friday Night, October 13, at 8:30  
 With MacWatters, Thompson, De Paolis. ADLER, Conductor
- followed by*
- SALOME (*Richard Strauss*)  
 with Djanel, Jagel, Harshaw, Shafer, Glaz, Garris, Alvary, De Paolis, Cehanovsky, Tis-  
 sier, Nelson, Wellman, Goodwin, Schmidling, Berton, Heitman. SEBASTIAN, Conductor
- FALSTAFF (*Verdi*) . . . . . Monday Night, October 16, at 8:00  
 With Baccaloni, Landi, Petroff, Della Chiesa, Albanese, Harshaw, Glaz, Garris, De Paolis,  
 Alvary, Lawlor. STEINBERG, Conductor
- FAUST (*Gounod*) . . . . . Wednesday Night, October 18, at 8:00  
 With Jobin, Pinza, Della Chiesa, Warren, Glaz, Votipka, Cehanovsky.  
 STEINBERG, Conductor
- THE MASKED BALL (*Verdi*) . . . . . Friday Night, October 20, at 8:00  
 With Roman, Peerce, Warren, Harshaw, MacWatters, Alvary, Silva, Cehanovsky, Tallone,  
 Lorenzini. STEINBERG, Conductor
- LES CONTES D'HOFFMAN (*Offenbach*) . . . . . Tuesday Night, October 24, at 8:15  
 With Jobin, Glaz, MacWatters, Djanel, Albanese, Pinza, Valentino, Cehanovsky, Alvary,  
 Turner, De Paolis, Tissier, Garris, Goodwin, Wellman, Sanders. MEROLA, Conductor
- CARMEN (*Bizet*) . . . . . Friday Night, October 27, at 8:00  
 With Stevens, Kullman, MacWatters, Valentino, Alvary, Votipka, Avakian, Cehanovsky,  
 De Paolis. SEBASTIAN, Conductor

## POPULAR SERIES

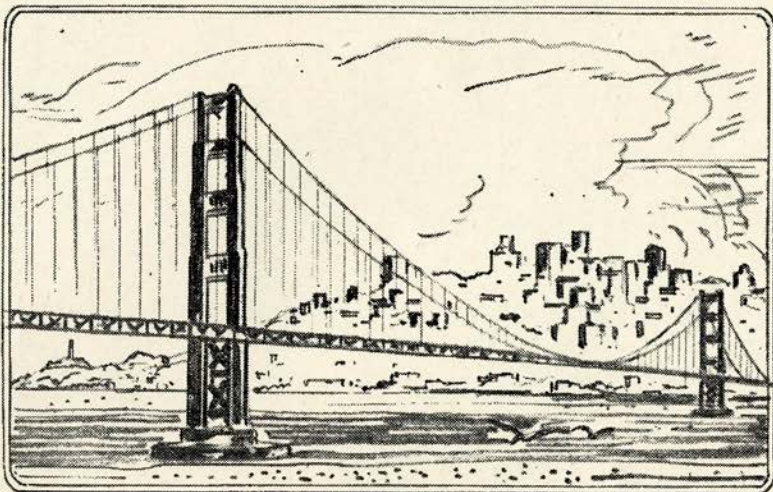
- LA BOHEME (*Puccini*) . . . . . Thursday Night, October 5, at 8:30  
 With Albanese, MacWatters, Kullman, Valentino, Pinza, Cehanovsky, Baccaloni, Alibertini,  
 Lorenzini, Jacobs. MEROLA, Conductor
- LUCIA DI LAMMERMOOR (*Donizetti*) . . . . . Wednesday Night, October 11, at 8:15  
 With Pons, Peerce, Alvary, Petroff, Votipka, Garris, Tissier. CIMARA, Conductor
- AIDA (*Verdi*) . . . . . Sunday Afternoon, October 15, at 2:15  
 With same cast as in the Regular Series performance.
- THE SECRET OF SUZANNE (*Wolf-Ferrari*) . . . . . Thursday Night, October 19, at 8:30  
 With same cast as in the Regular Series performance.
- followed by*
- SALOME (*Richard Strauss*)  
 With same cast as in the Regular Series performance.
- FALSTAFF (*Verdi*) . . . . . Thursday Night, October 26, at 8:00  
 With same cast as in the Regular Series performance.

## EXTRA PERFORMANCES

- LA FORZA DEL DESTINO (*Verdi*) . . . . . Sunday Afternoon, October 1, at 2:15  
 With Roman, Jagel, Warren, Pinza, Baccaloni, Glaz, Votipka, Alvary, De Paolis, Cehanovsky.  
 MEROLA, Conductor
- MARTHA (*von Flotow*) . . . . . Sunday Afternoon, October 8, at 2:30  
 With same cast as in the Regular Series performance. RIEDEL, Conductor
- RIGOLETTO (*Verdi*) . . . . . Tuesday Night, October 17, at 8:15  
 With Warren, Pons, Peerce, Silva, Glaz, Cehanovsky, Nelson, Wellman, De Paolis, Votipka,  
 Markham, Lawlor. CIMARA, Conductor
- MANON (*Massenet*) . . . . . Sunday Afternoon, October 22, at 2:30  
 With same cast as in the Regular Series performance.
- LES CONTES D'HOFFMANN (*Offenbach*) . . . . . Saturday Night, October 28, at 8:15  
 With same cast as in the Regular Series performance.

THE EXTRA PERFORMANCES OF "MANON" AND "RIGOLETTO" ARE OPERA ASSOCIATION  
 CONCERT ATTRACTIONS





**THE METROPOLIS**  
*of the*  
**FUTURE**

War-time activities keep the Port of San Francisco alive and humming today.

Let us all cooperate to keep the San Francisco Bay Area the industrial center of the West after the war.



**THE SAN FRANCISCO BANK**

SAVINGS      *Incorporated Feb. 10, 1868*      TRUST

*Member Federal Deposit Insurance Corporation*

SEVEN OFFICES . . . EACH A COMPLETE BANK

PARKER S. MADDUX, *President*

---

---

*THE CONCERT DIVISION OF THE*  
**SAN FRANCISCO OPERA ASSOCIATION**

GAETANO MEROLA, *General Director*

PAUL POSZ, *Business Manager*

*Announces*

THE TWO ALL-STAR OPERA HOUSE SERIES



*8—Evening Events—8*

RIGOLETTO	- - - - -	Oct. 17
BALLET RUSSE de MONTE CARLO	- - - - -	Nov. 21
ZINO FRANCESCATTI	- - - - -	Jan. 22
BIDU SAYAO	- - - - -	Feb. 21
DRAPER and ADLER	- - - - -	Mar. 5
JAMES MELTON	- - - - -	Mar. 23
RISE STEVENS	- - - - -	Apr. 17
ANOTHER EVENT TO BE ANNOUNCED		



*8—Sunday Matinee Events—8*

MANON	- - - - -	Oct. 22
DON COSSACKS (Gen. Platoff)	- - - - -	Nov. 19
BALLET RUSSE de MONTE CARLO	- - - - -	Nov. 26
ROBERT CASADESUS	- - - - -	Dec. 3
ADOLF BUSCH and his Little Symphony	- - - - -	Feb. 25
DOROTHY MAYNOR	- - - - -	Mar. 4
LAWRENCE TIBBETT	- - - - - (Date not announced)	
ANOTHER EVENT TO BE ANNOUNCED		



**WAR MEMORIAL OPERA HOUSE**

Tickets on sale at Opera Box Office, Normandy Lane, City of Paris — EX. 8585

*Order Your Season Tickets Now, While Choice Seats Are Available*

---

---



THE OFFICIAL PIANO *of the*  
SAN FRANCISCO OPERA COMPANY

BALDWIN



*Choose your Piano as the Artists Do*

VISIT OUR *Record Department*  
ONLY GROUND FLOOR RECORD DEPT. IN THE CITY



---

THE BALDWIN PIANO CO.

---

310 SUTTER STREET, SAN FRANCISCO  
1828 WEBSTER STREET, OAKLAND

MUSICAL ASSOCIATION OF SAN FRANCISCO  
presents

**SAN FRANCISCO  
SYMPHONY ORCHESTRA**

**PIERRE MONTEUX, *Conductor***

**LEONORA WOOD ARMSBY**  
*President and Managing Director*

**HOWARD K. SKINNER**  
*Business Manager*

Thirty-third Season — Dec. 1 to April 14

**FOUR SERIES**

EIGHT FRIDAY AFTERNOONS at 2:15

FOUR THURSDAY EVENINGS at 8:30

TWELVE SATURDAY EVENINGS at 8:30  
(Repeats of Friday Afternoon and Thursday Evening Concerts)

BRAHMS FESTIVAL — 3 EVENINGS at 8:30

**GUEST ARTISTS**

*Pianists*

ARTUR SCHNABEL • ANIA DORFMANN • ARTUR RUBINSTEIN  
WITOLD MALCUZYNSKI • LEONARD PENNARIO

*Violinists*

ERICA MORINI • HEIFETZ • NAOUM BLINDER

*Vocalists*

LOTTE LEHMANN • DUSOLINA GIANNINI • FREDERICK JAGEL  
MUNICIPAL CHORUS

*Guest Conductors*

EFRAM KURTZ • CARLOS CHAVEZ • LORIN MAAZEL

---

TICKETS — SYMPHONY BOX OFFICE — SHERMAN, CLAY — SUtter 1331

---

WAR MEMORIAL OPERA HOUSE



MUNICIPAL CONCERTS

1944-1945  
THE ART COMMISSION  
Presents

SAN FRANCISCO  
SYMPHONY ORCHESTRA

PIERRE MONTEUX, Conductor

DECEMBER 9



ALEXANDER BRAILOWSKY

THE POET OF THE PIANO IN AN ALL RUSSIAN PROGRAM

JANUARY 25



YEHUDI MENUHIN

SAN FRANCISCO'S OWN BRILLIANT GENIUS OF THE VIOLIN

FEB. 1-2-3-4  
8-9-10-11



RUSSIAN BALLET  
BALLET THEATRE

10 SPECTACULAR PERFORMANCES

MARCH 2



MARIAN ANDERSON

THE GREATEST CONCERT ARTIST OF THE DAY

APRIL 10



GRACE MOORE  
RAOUL JOBIN

IN CONCERT VERSION OF "LOUISE"



FIVE STAR SEASON

*Season Reservations Now!*

\*SIX EVENTS including opening night of Ballet Theatre and choice of any one other Ballet performance, also the four guest artist concerts.  
\$11.40, \$8.40, \$6.90, \$4.80, \$3.60, tax incl. BOX OFFICE, Sherman, Clay, SU 1331



DE PAOLIS



VOTIPKA



GARRIS



TURNER



TISSIER



AVAKIAN



LAWLOR

## ARTISTS OF *San Francisco* OPERA COMPANY

### HOW TO PRONOUNCE THEIR NAMES

LICIA ALBANESE

*Lee'-chee-ah Ahl-bah-nay'-zay*

LORENZO ALVARY

*Lorenzo Ahl-vah'ry*

ARMANDO AGNINI

*Ar-mahn'-dow Ah-nee'nee*

SALVATORE BACCALONI

*Sahl-vah-tow'-ray Bach-ah-low'-nee*

ETIENNE BARONE

*Et-yehn Bah-row'-nay*

GEORGE CEHANOVSKY

*George Chay-han-off'-skee*

VIVIAN DELLA CHIESA

*Vivian Dell-lah-Kee-ay'-zah*

OTELLO CERONI

*Otello Chay-row'-nee*

ANTONIO DELL'OREFICE

*Antonio Dell-oh-reff'-ee-chay*

ALESSIO DE PAOLIS

*Ah-less'-see-oh Deh Pah'-oh-leece*

LILY DJANEL

*Lee-lee Zhan-nell*

HERTA GLAZ

*Hair-tah Glahz*

FREDERIC JAGEL

*Frederick Yay-gel*

RAOUL JOBIN

*Rah-ool Zhoh-ban'*

BRUNO LANDI

*Brew-no Lahn'-dee*

GAETANO MEROLA

*Gah-yay-tahn'-oh Mare'-oh-lah*

IVAN PETROFF

*Ee-vahn Pet-roff*

EZIO PINZA

*Et'-see-oh Peen'-zah*

LILY PONS

*Lee-lee Pawnce*

KARL RIEDEL

*Karl Ree-dell*

STELLA ROMAN

*Stay-lah Row-mahn'*

ROBERTO SILVA

*Ro-bare'-tow Seel'-vah*

RISE STEVENS

*Ree'-suh Stevens*

FRANCESCO VALENTINO

*Francesco Vah-lenn-teen'-oh*



*Tribute  
Silk*



A Gump-created hostess gown in celadon green, sapphire blue, Imperial yellow and Chinese plum. The material, Tribute Silk, now virtually unobtainable, was used by the Chinese to pay taxes.

*Mandarin Room*

**GUMP'S**

250 POST STREET

WEDNESDAY NIGHT, OCTOBER 18, at 8:00

## FAUST

Opera in a prologue and four acts. Music by Charles Gounod.

Text by Barbier and Carré, after Goethe's tragedy.

### THE CAST

Faust, a learned philosopher.....RAOUL JOBIN  
Mephistopheles.....EZIO PINZA  
Marguerite.....VIVIAN DELLA CHIESA  
Valentine, her brother.....LEONARD WARREN  
Siebel, a young soldier in love with Marguerite.....HERTA GLAZ  
Martha, chaperon of Marguerite.....THELMA VOTIPKA  
Wagner.....GEORGE CEHANOVSKY

*Students, Soldiers, Villagers, Sorcerers.*

Corps de Ballet

#### STAGE DIRECTOR

ARMANDO AGNINI

#### CONDUCTOR

WILLIAM STEINBERG

#### CHORUS DIRECTOR

KURT HERBERT ADLER

**TIME AND PLACE:** Germany during the Sixteenth Century

Prologue: Faust's Study

Act I: A Public Square — The Kermesse

Act II: Marguerite's Garden

Act III: Scene I: In the Cathedral

Scene II: The Soldier's Chorus

Scene III: Marguerite's Garden  
several months later

Act IV: The Prison

---

SEATS FOR ALL REMAINING PERFORMANCES ARE  
AVAILABLE AT OPERA BOX OFFICE, CITY OF PARIS

---

*Encores not permitted — Bell rings three minutes before curtain rises*



# The Story of "Faust"

## PROLOGUE

Faust, an aged philosopher, having passed his lonesome life in study, longs for his lost youth and is planning suicide when attracted by the joyousness of the young people about him. Mephistopheles, the devil incarnate, appears in answer to a summons uttered in desperation. With the beautiful Marguerite as a lure he does not find it difficult to bargain with the old philosopher for his soul, and a magic potion brings him youth.

## ACT I

Valentine, about to leave for the war, entrusts his sister, Marguerite, to Siebel who loves her. It is Kermess time and there is festive drinking. Faust and Mephistopheles mingle with the townspeople. Mephistopheles, scornfully proffered wine, causes a nectar vintage to flow from the sign over the inn door. He proposes a toast to Marguerite. Valentine resents this with his sword, which Mephistopheles breaks in two. When Valentine holds the two pieces before him in the shape of a cross Mephistopheles shrinks away. In the midst of the dancing which now begins, Marguerite appears. She is charmed by Faust, who had retained the wisdom of his years when he became invested with the form and charm of youth.

## ACT II

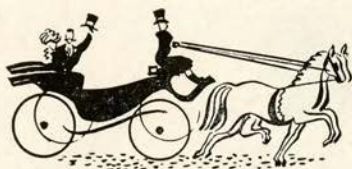
Siebel leaves flowers at Marguerite's door. They wither before the curse of Mephistopheles (uttered in Act I) and cannot be revived. Later Faust comes with his now constant companion, Mephistopheles, and places a casket of jewels at her window. Together, they hide to watch Marguerite when she opens her door to the flowers and to the jewels. Marguerite revels in the ornaments. Her rapturous song brings the querulous Martha, her companion, to the scene. Mephistopheles draws Martha into an amusing flirtation while Faust approaches Marguerite, who is completely won by his ardent protestations of love. Bidding Faust farewell, Marguerite wafts him a kiss as she enters the house. The casement opens and the enraptured Marguerite pours out the happiness of her heart into the night. Faust rushes to the window and clasps her in his arms where she lies fainting.

## ACT III

A year and a half have passed. Marguerite, abandoned in her shame and deserted by Faust, cannot find peace from the scorn of her townsmen even in church. But Siebel, true to Valentine's trust in him, remains faithful to her. Valentine returns from the fighting to find Faust haunting Marguerite's window and Mephistopheles serenading her with an insulting song. Engaging in sword play to avenge his sister, Valentine is killed by Faust and dies, cursing her.

## ACT IV

Marguerite, half demented, is in prison awaiting execution for the murder of her child. She takes happiness in the visit of Faust, who, with Mephistopheles, has come to deliver her. In her joy at again being in his arms, her life passes out and Mephistopheles' curses avail nothing against the sword of the archangel who guides the soul of Marguerite to heaven as Faust is dragged to perdition by his infernal master to fulfill his compact.



*"Those Good Old Days"*  
*revived at*

*Ed* *Goman's*  
**WAGY NINETIES**

**SCOOP!**

*Gilbert and Sullivan*

**REPERTOIRE**

Presented by

THE SAVOY OPERA COMPANY

**H. M. S. PINAFORE • PIRATES OF PENZANCE**  
**MIKADO or Gangster of Japan • TRIAL BY JURY**

**STAR CAST • FINEST SINGING COMPANY**

**GORGEOUS COSTUMES • SPECTACULAR PRODUCTION**

FRITZ BERENS, Musical Director



**Starts End of October — LIMITED ENGAGEMENT**



**RESERVATIONS TAKEN NOW • OPERA BOX OFFICE, CITY OF PARIS**  
**EXbrook 8585, or at Theatre — BUSH STREET MUSIC HALL**





## BEAUTY

### PURPLE PATH TO HAPPINESS

In every age, in every civilization, beauty has smoothed the path toward happiness. Whatever loveliness you have, heighten it, cultivate it, hold it against the years with the beauty preparations of Germaine Monteil. They will serve your beauty well, making it glow more brightly today, guarding it for tomorrow and tomorrow.

*Germaine Monteil*

THURSDAY NIGHT, OCTOBER 19, at 8:30

## THE SECRET OF SUZANNE

Opera in one act. Music by Ermanno Wolf-Ferrari. Book by Max Kalbeck.  
Text by Claude Aveling, after the Italian of Enrico Golisciani.

### THE CAST

The Countess Suzanne.....VIRGINIA MacWATTERS  
Count Gil.....HUGH THOMPSON  
Sante, a dumb servant.....ALESSIO DE PAOLIS

**STAGE DIRECTOR**  
ARMANDO AGNINI

**CONDUCTOR**  
KURT HERBERT ADLER

**TIME AND PLACE:** About 1840; Living-room of Count Gil's Villa in Piedmont

*followed by*

## SALOME

Opera in one act, by Richard Strauss.  
Adapted from Oscar Wilde's romance.

### THE CAST

Salome, daughter of Herodias.....LILY DJANEL  
Herod, Tetrach of Judea.....FREDERICK JAGEL  
Herodias.....MARGARET HARSHAW  
Jochanaan, the Prophet.....JOHN SHAFER  
Narraboth, Captain of the Guard.....JOHN GARRIS  
Page of Herodias.....HERTA GLAZ  
First Nazarene.....LORENZO ALVARY  
Second Nazarene.....ROBIN NELSON  
First Soldier.....GEORGE CEHANOVSKY  
Second Soldier.....EDWARD WELLMAN  
First Jew.....JOHN GARRIS  
Second Jew.....ANTHONY BERTON  
Third Jew.....ALESSIO DE PAOLIS  
Fourth Jew.....JOSEPH TISSIER  
Fifth Jew.....CHARLES GOODWIN  
A Slave.....ELMA HEITMAN  
A Cappadocian.....W. VERNON SANDERS  
A Henchman.....GEARY ANDERSON

*Roman Soldiers, Slaves, Musicians, Jews, Nazarenes, Pages, Executioner*

**STAGE DIRECTOR**  
ARMANDO AGNINI

**CONDUCTOR**  
GEORGE SEBASTIAN

**TIME AND PLACE:** A. D. 30; Tiberias in Galilee.

Scene: A Great Terrace of the Palace of Herod

Setting designed by Armando Agnini and constructed in the studios of the  
San Francisco Opera Association.

---

SEATS FOR ALL REMAINING PERFORMANCES ARE  
AVAILABLE AT OPERA BOX OFFICE, CITY OF PARIS

---

*Encores not permitted — Bell rings three minutes before curtain rises*



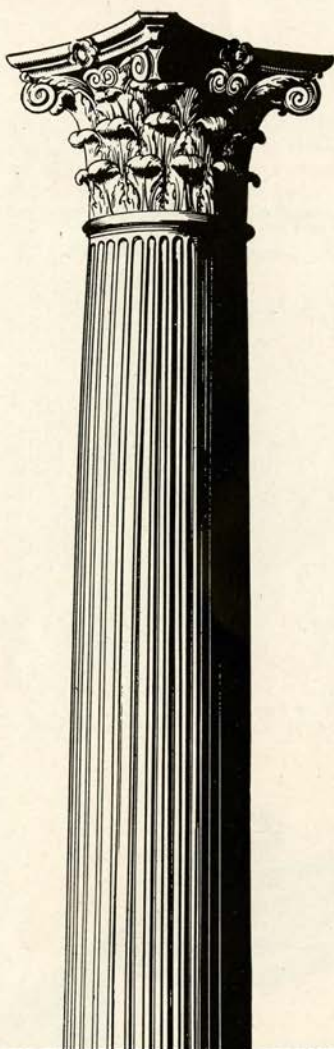
## The Story of "The Secret of Suzanne"

The charming Suzanne slips home with only time to give Sante her things and retreat to her room before Count Gil appears. His feverish restlessness augments as, sniffing the odor of tobacco, he secretly doubts his bride's fidelity, since none in his household is permitted to smoke. Joined by Suzanne, he is won from lover-wise jealousy to adoration till again he breathes the hateful odor. Accusing Suzanne of shielding some secret, he is astounded at her acquiescence and plea that he overlook her indulgence of a craving that speeds the hours of his absence. Suzanne's timid reconciliation after their quarrel embraces a gentle eagerness that he go to his club. Unhappy suspicions quickened again, the Count storms off, and Suzanne, in mischievous content, settles herself to smoke. Gil's return discovers her secret. Relieved, he begs forgiveness, and in humble sacrifice accepts a cigarette for his own lips.



## The Story of "Salome"

Jochanaan, the Prophet, has been imprisoned by Herod because of his teachings. But fearing the Jews, Herod will not put him to death. Narraboth, who is madly infatuated with the beautiful and sensuous Salome, and his soldiers guard the entrance to a banquet hall where revel reigns. Salome, tired of the banquet and the sensuous advances of Herod, comes onto the terrace. She hears Jochanaan's voice coming from the cistern in which he is held prisoner and demands that he be brought out. Unable to resist her cajoling, Narraboth complies. Jochanaan begins a terrible denunciation of Herodias. Salome falls wildly in love with him and gives vent to her infatuation in abandoned song. Denouncing her Jochanaan descends into the cistern and Narraboth, crazed by what he has witnessed, kills himself. Herod, Herodias and the entire court come onto the terrace. The warning voice of the Prophet is heard from the cistern. Herodias urges the king to order his execution but Herod, still fearing the Jews, refuses. Herod then commands Salome to dance for him but she refuses unless he gives her whatever she may ask for. At his promise Salome begins the Dance of the Veils and at the urging of Herodias claims the head of Jochanaan for her reward. The horrified Herod begs release from his promise but Salome will not be dissuaded. A headsman descends into the cistern and comes up with the dripping head of Jochanaan on a platter. Salome receives the head from the executioner and with abandon pours out her amorousness for the white flesh of Jochanaan. But when she kisses the lifeless lips Herod can stand no more and at his command the guards crush the ghoulish princess to death under their shields.



## Your WILL *cannot* bequeath "good judgment"

By intelligent management you have built up your Estate. Your Will sets up the Plan you want your Executor to follow.

If you appoint an *individual* as Executor and Trustee, will his judgment in handling your estate match your judgment in creating it? And will he remain always in good enough health, and be free enough from his own personal affairs to give your Plan his best attention?

On the other hand, by appointing this Bank as Executor and Trustee you are definitely assured specialized experience, group judgment and careful attention throughout the life of your estate. Our *continuing staff* of seasoned estate managers can and do faithfully follow both the letter and the spirit of your Plan.

Get details from any officer of this Bank.

Head Office: 400 CALIFORNIA STREET  
Mission Branch: 16TH & JULIAN AVENUE

# THE BANK OF CALIFORNIA

NATIONAL ASSOCIATION

Founded in 1864

SAN FRANCISCO · PORTLAND · SEATTLE · TACOMA

BUY U. S. WAR BONDS  
AND STAMPS

1944  
OUR  
EIGHTIETH  
ANNIVERSARY  
YEAR





DANCING ON THE PENINSULA  
in the beautiful

## GARDEN ROOM

EVERY SATURDAY EVENING

*featuring the romantic voice of*

### BOB KEELY

with the

**BENJAMIN FRANKLIN HOTEL  
ORCHESTRA**

IN SAN MATEO  
30 MINUTES FROM SAN FRANCISCO



**DUANE GOWLAND, Mgr.**



California Grape Brandy 84 proof.  
Cresta Blanca Wine Company, Inc., Los Angeles, Calif.

## *The Proscenium Arch*



is built to be the frame for  
pictures created upon a stage.  
To form these pictures many are called  
to help. . . . The Moving, Living and Col-  
orful pictures, so full of delightful detail  
captivate the eye. . . . It has been our  
privilege to offer to the Opera Lovers of  
San Francisco the products of our effort.  
For many years we have been the exclusive  
designers and producers of costumes for  
this outstanding organization. May we be  
of service to you.

## **GOLDSTEIN & CO.**

989 Market St.

Est. 1868

Garfield 5150

# OPERA BOX HOLDERS

Season 1944

MR. AND MRS. C. ROBERT ADAMS  
MR. AND MRS. GEORGE WASHINGTON BAKER, JR.  
MRS. GEORGE EDWIN BENNETT  
MR. AND MRS. CHARLES R. BLYTH  
MR. AND MRS. JAMES PARKS BRADLEY  
MR. AND MRS. JOHN DAVIS BRADLEY  
MR. AND MRS. ROY BRONSON  
MR. AND MRS. GEORGE T. CAMERON  
MR. AND MRS. WILLIAM W. CROCKER  
MRS. FRANK P. DEERING  
MR. AND MRS. SIDNEY M. EHRLMAN  
MR. AND MRS. MORTIMER FLEISHHACKER  
DR. AND MRS. FRANK R. GIRARD  
MR. AND MRS. JOSEPH T. GRACE  
MR. AND MRS. CHARLES L. HARNEY  
MRS. I. W. HELLMAN  
MRS. ALFRED HERTZ  
MR. AND MRS. CLARENCE LORAN JOHNSTON  
MRS. MARCUS S. KOSHLAND

MRS. LEWIS LAPHAM  
MR. AND MRS. JUILLIARD McDONALD  
MR. AND MRS. FELIX MCGINNIS  
MR. AND MRS. FREDERICK W. McNEAR  
MR. AND MRS. GAETANO MEROLA  
MR. AND MRS. C. O. G. MILLER  
MR. AND MRS. EPPS J. MILLER  
MR. AND MRS. KENNETH MONTEAGLE  
MRS. STANHOPE NIXON  
MRS. GEORGE A. POPE  
MRS. ARLINE M. ROLKIN  
MRS. HENRY POTTER RUSSELL  
SAN FRANCISCO OPERA GUILD  
JUDGE AND MRS. M. C. SLOSS  
MRS. SIGMUND STERN  
MR. AND MRS. BERTRAM V. STURDIVANT  
DR. AND MRS. DAVID ARMSTRONG TAYLOR  
MR. AND MRS. NION R. TUCKER

Angelo J. Rossi Co. INC.

45 Grant Avenue

Douglas 8060

*Flowers*

*Distinctive Creations for All Occasions*

FLOWERS TELEGRAPHED ANYWHERE

*Angelo J. Rossi Co., Inc.*

Angelo J. Rossi, Pres. and Mgr.

*Famous for Flowers Since 1885*

*A Visit After the Opera to the*

**CARDINAL RICHELIEU** *Cocktail Lounge*

IS A PERFECT ENDING TO A PERFECT DAY

THE COCKTAIL LOUNGE WITH  
A DISTINCTIVE ATMOSPHERE

**THE RICHELIEU HOTEL**

VAN NESS AT GEARY



*Time Tonight*  
*for a la carte supper*  
*and Midnight Show*

**MAYRIS  
CHANEY'S  
GLAMOUR-TIME  
REVUE!**

*Starring*

**RAY THOMAS**

*America's Newest & Funniest Comedian*

**DOUG RICHARDSON**

*and his "Marionettes" (Held over)*

**TERRY ANDRE**

*Gorgeous Singing Starlette*

**MARYANNE BAXTER**

*and her "Dance of the Petals"*

*The Glittering Mayris Chaney*  
**"BEVY OF BEAUTIES"**

**FRANKLYN SMITH**

*and his Entertaining Orchestra*

**DINNERS from \$2.00**  
**No Cover Charge**



*1st Show*  
*at 7:30 p.m.*

*DAVE HERSH'S ROMANTIC*

**RICHELIEU**

**CASINO**

1039 GEARY ST.

ORdway 0113

# GUARANTOR MEMBERS

of the

## SAN FRANCISCO OPERA ASSOCIATION

C. Edgar Adams  
Mr. and Mrs. C. Robert Adams  
Mrs. John S. Adler  
Mrs. Wallace M. Alexander  
Lucy H. Allyne  
T. E. Ambrose  
Mr. & Mrs. George Washington Baker, Jr.  
Edward R. Bacon  
A. R. Baldwin  
B. A. Banker  
Mrs. John T. Barnett  
Peter Barnett  
Mrs. Edward F. Barron  
Irving P. Bartel  
Mr. and Mrs. Robert S. Beall  
Mr. and Mrs. F. N. Belgrano, Jr.  
John Bender  
Mr. and Mrs. David Benioff  
Mrs. George E. Bennett  
Mrs. Charles H. Bentley  
Mrs. Walter H. Bentley  
Dr. and Mrs. Tholow Binkley  
Newton Bissinger  
W. Harry Blatchly  
Louis Bloch  
Charles R. Blyth  
Mrs. Angus Gordon Boggs  
Mrs. Robert C. Bolton  
Mrs. George M. Bowles  
Dr. Karl M. Bowman  
Louise A. Boyd  
Walter C. Brauns  
Mrs. William Ellery Briggs  
Mr. and Mrs. Roy A. Bronson  
Mrs. Julia Fox Brooke  
George W. Brooks  
Dr. LeRoy Brooks  
Arthur M. Brown, Jr.

Mr. and Mrs. James A. Brown  
Mrs. Louis C. Brown  
Ralph Brown  
Walter Brown  
Mrs. E. E. Brownell  
Starr Bruce  
Mr. and Mrs. Frank E. Buck  
Dr. Leonard W. Buck  
Thomas Buck  
Mrs. Neil Buckley  
Mrs. Felix Butte  
John R. Cahill  
Dr. William Otis Callaway  
Mr. and Mrs. George T. Cameron  
Leo Cardoza  
Estelle Carpenter  
Selah Chamberlain, Jr.  
Charles A. Christin  
Mrs. Tobin Clark  
Mrs. Warren D. Clark  
Mrs. John P. Coghlan  
Mr. and Mrs. George D. Cohn  
Mrs. Max M. Cohn  
Mrs. Colbert Coldwell  
Persis H. Coleman  
Mr. and Mrs. Jesse Colman  
H. D. Collier  
J. J. Coney  
Mary R. Conlin  
Dr. and Mrs. Frederick C. Cordes  
Mrs. W. M. Craig  
Arthur S. Crites  
William W. Crocker  
George E. Crothers  
R. K. Davis  
Mrs. Stuart Davis  
Davis-Schonwasser

Florence E. Dean  
Mrs. Charles J. Deering  
Mrs. Frank P. Deering  
In Memoriam  
Frank P. Deering  
Mrs. Georges de Latour  
Frank H. Denman  
Mr. and Mrs. John Michael Desch  
Richard Detert  
Mrs. Robert T. Devlin  
Mrs. Donald R. Dickey  
Mrs. L. W. Dinkelspiel  
Mrs. Samuel L. Dinkelspiel  
Mr. and Mrs. O. Dewey Donnell, Jr.  
Katharine Donohoe  
Mrs. F. A. Dorn  
Mrs. Lambert Dunbar  
Dr. Muriel E. Edwards  
Mr. and Mrs. Albert L. Ehrman  
Mrs. Alfred Ehrman  
Sidney M. Ehrman  
Mrs. S. W. Ehrman  
Wilfred Eldred  
H. A. Ellis  
John W. Elwood  
Mrs. Milton H. Esberg  
Mrs. Harold K. Faber  
Paul I. Fagan  
Lionel B. Feigenbaum  
Mrs. Alexander Field  
Mr. and Mrs. Marshal H. Fisher  
Mortimer Fleishhacker  
John F. Forbes  
Mr. and Mrs. Edward T. Ford  
Jennie S. Frank  
Mr. and Mrs. Thomas G. Franck  
William Fries

# FLOWERS

MAKE THE PERFECT GIFT... THEY SPEAK ALL  
LANGUAGES... AND THEY WILL BE ESPECIALLY  
ELOQUENT IF THEY ARE FROM...

*Podesta & Baldocchi*

America's Most Famous Florists

224 GRANT AVENUE, SAN FRANCISCO

Telephone: SUTTER 6200



*The World's Only True*

# DAPHNE

**R**OLLEY alone has captured the fresh, natural fragrance of the Daphne . . . in superb quality perfume or rich, full-bodied cologne. True Daphne is but one of the Forty Famous Fragrances in perfume and matching cologne awaiting your selection.



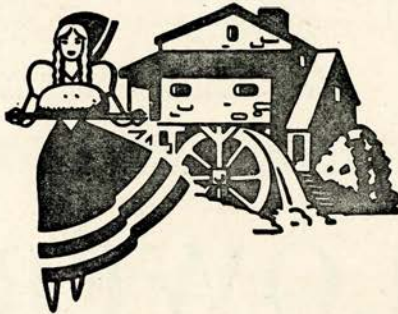
Perfume . . . \$1.25 dram  
to \$8.00 ounce.  
Matching Cologne, \$2.00  
for 3 ounces.  
Add 20% Federal Tax

**ROLLEY**  
**PERFUMES**



"TRULY AMERICA'S FINEST"

108 GEARY NEAR GRANT . . . 361 SUTTER BELOW STOCKTON . . . EXBROOK 4471



There's a Fine art in bread  
making, too. Every **OROWEAT**  
loaf is a masterpiece.

The **GRIST-MILL BAKERS**

# **OROWEAT**

## GUARANTOR MEMBERS — *Continued*

Nelly Gaffney  
 Maurice A. Gale  
 L. Galtie  
 Vallejo Gantner  
 Mr. and Mrs. Henry Gede, Jr.  
 James P. George  
 D. Lyle Ghirardelli  
 Mrs. Domingo Ghirardelli  
 Dr. and Mrs. Arthur Collis Gibson  
 George B. Gillson  
 Dr. and Mrs. Frank R. Girard  
 Mr. and Mrs. Harry Gittings, Jr.  
 Rosemary Glosz  
 Louis Goldstein  
 Lutie D. Goldstein  
 Mr. and Mrs. Jack Gomperts  
 Lorraine C. Goodman  
 Mr. and Mrs. Joseph T. Grace  
 Mrs. Joseph D. Grant  
 Mrs. Maurice S. Greenberg  
 Stuart N. Greenberg  
 Mrs. Frederick S. Greenlee  
 Gustav Gumpel  
 Madeleine Haas  
 Marshal Hale  
 Prentis C. Hale, Jr.  
 R. B. Hale  
 Herbert E. Hall  
 Eminent P. Halsted  
 W. F. Hanrahan  
 Mrs. Robert D. Harden  
 W. Glenn Harmon  
 Mrs. Charles L. Harney  
 Maurice E. Harrison  
 Mrs. Russell P. Hastings  
 Mrs. Elystus Hayes  
 Mrs. Timothy Hayes  
 A. W. Hazen  
 Mrs. E. S. Heller  
 Walter D. Heller  
 Walter S. Heller  
 Mrs. I. W. Hellman  
 Mrs. Robert B. Henderson

Mrs. Rudolph G. Henning  
 Dr. Ernest E. Hessing  
 Leslie W. Hills  
 Mr. and Mrs. Harry Hilp  
 Osgood Hooker  
 L. Arundel Hopkins  
 Mrs. H. A. Hornlein  
 Dr. John F. Huffman  
 Marian Huntington  
 Mrs. James Irvine  
 Dr. S. Nicholas Jacobs  
 R. J. Jansen  
 Clancy Ann Jefferys  
 Mr. and Mrs. Louis Jefferys  
 Ector R. Johnson  
 Mr. and Mrs. Clarence Loran Johnston  
 General Kenyon A. Joyce  
 Mrs. Ira Kahn  
 Henry J. Kaiser  
 Edward D. Keil  
 H. C. Kelsey  
 Charles Kendrick  
 Marion H. Kent  
 Percy L. King  
 Dr. John J. Kingston  
 R. W. Kinney  
 Mrs. Josephine R. Kleinjung  
 Mrs. William E. Kleinsorge  
 Robert L. Kline  
 Caroline Korbel  
 Elsa R. Korbel  
 Mrs. Jesse Koshland  
 Mrs. Marcus S. Koshland  
 Frederick J. Koster  
 Mr. and Mrs. Edwin V. Krick  
 Gus Kroesen  
 Esther Kuenz  
 Mrs. Albert George Lang  
 Mrs. Philip Lansdale  
 Mrs. Lewis Lapham  
 Mrs. Charles G. Lathrop  
 Edwin Leitch

John A. Lesoine  
 J. B. Levison  
 Philip N. Lilienthal  
 Mr. and Mrs. Samuel Lilienthal  
 Mr. and Mrs. William J. Lindenberger  
 Clarence R. Lindner  
 F. L. Lipman  
 Mrs. Norman B. Livermore  
 Mr. and Mrs. James K. Lochead  
 Mrs. A. J. Lowrey  
 Louis R. Lurie  
 Edmunds Lyman  
 James W. McAlister  
 Mr. and Mrs. A. M. McCarty  
 Adelaide McColgan  
 Mrs. William H. McCormick  
 Mr. and Mrs. Juilliard McDonald  
 Mrs. Mark L. McDonald  
 Mrs. John McGaw  
 Mr. and Mrs. Felix S. McGinnis  
 Mrs. Alfred McLaughlin  
 Mrs. Clarissa McMahan  
 Mrs. George P. McNear  
 Peter Macris  
 Mr. and Mrs. Grover A. Magnin  
 Mrs. J. W. Mailliard, Jr.  
 Mrs. Joseph A. Mancini  
 Mr. and Mrs. George M. Mardikian  
 Edward Martin  
 Mr. and Mrs. R. W. Martenet  
 A. C. Mattei  
 Harry D. Maxwell  
 Evelyn Mendessolle  
 Mr. and Mrs. Gaetano Merola  
 Mrs. Helen Merritt  
 Mrs. George H. C. Meyer  
 Mr. and Mrs. Julian Meyer  
 Mrs. C. F. Michaels  
 Mr. and Mrs. C. O. G. Miller  
 Mr. and Mrs. Epps J. Miller  
 Mr. and Mrs. Edward F. Moffatt  
 Henrietta Moffat

REMEMBER THE NAME

*Freed-Eisemann*

when you buy your post-war radio-phonograph with FM

"One of the world's great radio-phonographs"

Freed Radio Corporation, New York, N. Y.



BUY MORE WAR BONDS!

# VANESSI'S

GOOD FOOD





COLUMBIA CONCERTS, INC.

Presents

**"GREAT NAMES IN MUSIC"**

*Appearing 1944 San Francisco Opera Season*

LICIA ALBANESE  
 LORENZO ALVARY  
 CHARLES KULLMAN

MARGARET HARSHAW  
 LILY PONS  
 RISE STEVENS

*Appearing San Francisco Opera Concert Series, 1944-1945*

ROBERT CASADESUS  
 ADOLF BUSCH LITTLE SYMPHONY  
 DON COSSACKS (PLATOFF)  
 DRAPER AND ADLER

DINO FRANCESCATTI  
 DOROTHY MAYNOR  
 JAMES MELTON  
 BIDU SAYAO  
 RISE STEVENS

*Appearing with San Francisco Symphony, 1944-1945 Season*

HEIFETZ  
 YEHUDI MENUHIN

ERICA MORINI  
 CARLOS CHAVEZ

LORIN MAAZEL  
 EFREM KURTZ

COLUMBIA CONCERTS, Inc. 113 West 57th Street, New York

San Francisco Representative, PAUL POSZ, War Memorial Opera House

Los Angeles Representative, L. E. BEHYMER, 415 Auditorium Building

## GUARANTOR MEMBERS — *Continued*

James K. Moffitt  
 Mr. and Mrs. Kenneth Monteagle  
 Mr. and Mrs. Paige Monteagle  
 Frederick H. Montgomery  
 Mrs. Joseph A. Moore  
 A. C. Morici  
 Guido J. Musto  
 Laura Musto  
 Mr. and Mrs. A. E. Nelson  
 Mr. and Mrs. Ralph R. Nelson  
 Julia M. Neppert  
 Arthur A. & Hugo D. Newhouse  
 Dr. and Mrs. Alfred Newman  
 Mr. and Mrs. John Francis Neylan  
 Mrs. Stanhope Nixon  
 Mrs. Mary L. Obujen  
 Benjamin J. Older  
 Mrs. Edwin Letts Oliver  
 Mr. and Mrs. Charles R. Page  
 Mrs. S. H. Palmer  
 Mrs. Henry Passow  
 Dr. Sadie D. Patek  
 Peninsula Box Office  
 Mrs. O. B. Perry  
 George W. Phillips, Jr.  
 Mrs. Grattan D. Phillips  
 Mrs. Herman Phleger  
 Mr. and Mrs. G. Pisani  
 Aram Poladian  
 Mrs. George A. Pope  
 Mrs. Paul Posz  
 Mrs. Ashton H. Potter  
 Mr. and Mrs. Stanley Powell  
 Colonel John Sedgwick Pratt  
 Dr. Edward Purcell  
 John B. Quigley  
 Mrs. Carl Raiss  
 A. S. Rees  
 Dr. and Mrs. Ralph A. Reynolds  
 Neville J. Rich  
 Mrs. H. A. Richardson

Mrs. Nathan Rogers  
 Mrs. Arline M. Rolkin  
 Col. and Mrs. Robert A. Roos  
 Mr. and Mrs. John N. Rosekrans  
 Leland S. Rosener  
 Mrs. Angela Wing Roth  
 Mr. and Mrs. William P. Roth  
 John Rothschild  
 Ken F. Royce  
 Mohr M. Rubin  
 Frank K. Runyon  
 Mrs. A. S. Russell  
 A. K. Salz  
 Horace H. Scales  
 Mr. and Mrs. Carl Schaubye  
 Else Schilling  
 Dr. Walter Schilling  
 George B. Schirmer  
 Mrs. Frank Schwabacher  
 James H. Schwabacher  
 Mrs. Louis A. Schwabacher  
 Harry S. Scott  
 Don Searle  
 Mr. and Mrs. Richard H. Shainwald  
 Mr. and Mrs. R. S. Shainwald  
 Mrs. Nelson Towne Shaw  
 Frederic R. Sherman  
 Richard O. Simon  
 Mrs. Norman J. Sinclair  
 Mrs. Edgar Sinton  
 Charles W. Slack  
 Mrs. Leon Sloss  
 Judge and Mrs. M. C. Sloss  
 Stanley C. Smallwood  
 Mr. and Mrs. Charles Watt Smith  
 Capt. George Willard Somers  
 Fred H. Spiess  
 Mrs. Edward B. Stanwood  
 G. A. Starkweather  
 Mr. and Mrs. Ralph J. A. Stern  
 Mrs. Sigmund Stern

Dr. and Mrs. John Philip Strickler  
 Benka Strickler  
 John P. Strickler III  
 B. V. Sturdivant  
 Mr. and Mrs. Walter H. Sullivan  
 Mrs. Ernest J. Sultan  
 Mr. and Mrs. Alfred Sutro  
 Louis Sutter  
 E. J. Sweetland  
 Mrs. Andrew B. Talbot  
 Mrs. David Armstrong Taylor  
 Mr. and Mrs. William Timson  
 George C. Thierbach  
 Mrs. Myron I. Thomas  
 E. W. Thompson  
 Mr. and Mrs. Morley Thompson  
 Mr. and Mrs. C. R. Tobin  
 Mr. and Mrs. Ernest J. Torregano  
 Dr. and Mrs. Harold Guyon Trimble  
 Gina Troya  
 Mrs. Alfred Tubbs  
 Mr. and Mrs. Nion R. Tucker  
 Mr. and Mrs. Daniel Volkmann  
 George Wagner  
 Morton Wallace  
 Whitney Warren, Jr.  
 Mr. and Mrs. Michel D. Weill  
 Mrs. Millard C. White  
 Cynthia V. Whitman  
 Rich Whitmore  
 Mrs. F. A. Wickett  
 Robert L. Wiel  
 Mr. and Mrs. Brayton Wilbur  
 Stephen Williams  
 Mrs. J. L. Wolf  
 Barbara Young  
 Mr. and Mrs. F. A. Zane  
 Mrs. V. Zaruba  
 Joan Zeegers  
 Mr. and Mrs. J. D. Zellerbach  
 Edgar T. Zook

*In the Mural Room*

**AFTER THE OPERA**

... still time for two  
hours of dancing ...  
to the music of

**TED WEEMS**

and his orchestra  
nightly except Monday  
8:30 till 1 and Saturday  
afternoon Tea Time

**MONDAY NIGHT**

and every evening  
before 8:30 ... enjoy  
the finest foods in  
luxurious surroundings

NO COVER CHARGE  
NO CABARET TAX

Concert Music

*Hotel St. Francis*

Don E. London • General Manager





**KARL C. WEBER**  
President and  
General Manager

At the Civic Center . . . so conveniently near . . .  
Hotel Whitcomb is the home of the Whitcomb  
Inn, the Dickens Pub and The Parade Cocktail  
Lounge.

HOTEL **WHITCOMB**  
MARKET STREET AT 8TH



*Simi Vineyard*  
FINE CALIFORNIA WINES

When entertaining, serve superb SIMI  
vintage table wines . . . Burgundy,  
Cabernet, Carignan, Zinfandel, and  
Larose, Sauterne, Chablis . . . ma-  
tured with unhurried care from  
choicest Sonoma hillside grapes  
. . . ask for SIMI . . . pronounced  
'See-Me . . . at your dealer's.

**PARROTT & CO. . . San Francisco . . . Sole U. S. Distributors**

# SAN FRANCISCO OPERA GUILD, INC.

MRS. ROGER D. LAPHAM, JR., *Chairman*

MRS. JOHN PHILLIP COGHLAN, JR., *Vice-Chairman*

MRS. STANLEY POWELL, *Vice-Chairman*

MRS. FREDERICK WHITMAN, *Secretary*

MR. JERD SULLIVAN, *Treasurer*

## Members

Mrs. Lloyd S. Ackerman  
Mrs. Arthur C. Adams  
Mr. C. Edgar Adams  
Mrs. Alexander Albert  
Mrs. Wallace M. Alexander  
Mrs. Berrien Anderson  
Miss Margaret Andrews  
Mr. Noel T. Arnold  
Mrs. R. M. Barthold  
Mrs. Edward Otis Bartlett  
Mrs. Julian Palmer Beek  
Mr. A. M. Benfield  
Mrs. G. Grace Benoist  
Mrs. Charles H. Bentley  
Miss Jessie E. Benton  
Dr. and Mrs. Tholow Binkley  
Mrs. Roy N. Bishop  
Mrs. Charles N. Black  
Miss Jennie M. Blair  
Miss Phyllis Bliss  
Mr. Louis Bloch  
Miss Ruth V. Bloch  
Mrs. Walter W. Boardman  
Mrs. Angus Gordon Boggs  
Mrs. George M. Bowles  
Miss Louise A. Boyd  
Mr. and Mrs. James Parks Bradley  
Mr. H. Sewall Bradley  
Mr. and Mrs. John D. Bradley  
Mrs. M. J. Brandenstein  
Mrs. Edward Bransten  
Mrs. W. C. Brauns  
Mrs. A. F. Bray  
Miss Bogardus Brodt  
Mrs. Julia Fox Brooke  
Mr. Arthur M. Brown, Jr.  
Mrs. Hillier Brown  
Mrs. E. E. Brownell  
Mr. Frank J. Brucato  
Mrs. Starr Bruce  
Mr. Starr Bruce  
Lt. and Mrs. Neil Buckley  
Mrs. Robert B. Burroughs  
Miss Estelle Carpenter  
Dolores Calles  
Major C. J. Carey  
Mr. George T. Cameron  
Mr. Russell Carpenter  
Mrs. John Casserly  
Mrs. A. L. Chickering  
Mr. Drew Chidester

Madame Clara  
Mrs. John P. Coghlan  
Mrs. John Phillip Coghlan, Jr.  
Mr. John P. Coghlan  
Mrs. Max M. Cohn  
Miss Persis H. Coleman  
Mr. H. D. Collier  
Mrs. Jesse D. Colman  
Miss Mary R. Conlin  
Mrs. W. B. Cope  
Mrs. Charles Crocker  
Mr. Templeton Crocker  
Judge George E. Crothers  
Mrs. John D. Crummey  
Mrs. O. K. Cushing  
Mrs. Chester Dahl  
Mrs. John F. Davis  
Mrs. Charles J. Deering  
Mrs. Georges deLatour  
Mr. Frank H. Denman  
Mr. and Mrs. John Michael Desch  
Mrs. Lloyd W. Dinkelspiel  
Mrs. Samuel L. Dinkelspiel  
Mr. and Mrs. Dewey Donnell  
Miss Katherine Donohoe  
Mrs. Warrington Dorst  
Mrs. Paul M. Downing  
Mrs. Frank R. Dray  
Mrs. H. B. Drescher  
Mrs. Lambert Dunbar  
Mrs. Charles Dunphy  
Dr. Muriel E. Edwards  
Mr. Philip Ehrlich  
Mrs. Alfred Ehrman  
Mrs. Sidney Ehrman  
Mrs. Milton H. Esberg  
Mrs. Walter Filer  
Mrs. Marshall Fisher  
Mrs. Herbert Fleishhacker, Jr.  
Mrs. Mortimer Fleishhacker, Jr.  
Mrs. George Flood  
Mrs. B. C. Floyd  
Mrs. John F. Forbes  
Mrs. Bernard W. Ford  
Mrs. W. Parmer Fuller, III  
Mrs. Alfred Ghirardelli  
Mr. D. Lyle Ghirardelli  
Mrs. Domingo Ghirardelli  
Dr. and Mrs. Thomas A. Gibson  
Mr. George B. Gillson  
Dr. Frank Girard

Mrs. Frank Girard  
Mrs. J. H. Glide  
Mrs. Harry F. Gittings, Jr.  
Miss Amelie Gier  
Miss Lutie Goldstein  
Mr. Jack Gomperts  
Miss Lorraine C. Goodman  
Mrs. James Graham  
Mrs. Joseph D. Grant  
Mrs. Spencer Grant  
Mrs. Horace Gray  
Mr. and Mrs. Stuart N. Greenberg  
Mr. Emil Greenebaum  
Mrs. Frederick L. Greenlee  
Mrs. Gustav Gumpel  
Mrs. Walter A. Haas  
Mrs. Walter A. Haas, Jr.  
Miss Ethel Hager  
Mr. Marshall Hale  
Mr. R. B. Hale  
Mrs. Richard J. Hanna  
Mrs. Robert D. Harden  
Mrs. Charles L. Harney  
Mrs. Russell Hastings  
Mr. A. W. Hazen  
Mrs. Richard Heimann  
Mrs. E. S. Heller  
Mr. Walter D. Heller  
Mr. Walter S. Heller  
Mrs. Frederick Hellman  
Mrs. I. W. Hellman  
Mrs. Wellington S. Henderson  
Mrs. Alfred Hertz  
Mrs. A. W. Hewlett  
Mrs. Harold Hill  
Mrs. Harry Hill  
Mrs. Stanley Hiller  
Mr. and Mrs. Harry H. Hilp  
Mrs. A. F. Hockenbeamer  
Mrs. Clifford P. Hoffman  
Mrs. Osgood Hooker  
Mrs. Thomas Carr Howe, Jr.  
Mrs. Thomas R. Hughes  
Mrs. John Power Hutchins  
Dr. S. Nicholas Jacobs  
Mr. R. J. Jansen  
Mr. Harold I. Johnson  
Mr. Ivar Johnsson  
Mrs. Clarence Loran Johnston  
Mrs. Henry J. Kaiser  
Mr. Ben C. Keator



OUR SOCIAL HOSTESS WILL INTRODUCE YOU

**JEAN MERRICK**  
703 Market St.  
Suite 1302  
YUkon 2923

A highly ethical introduction  
bureau conducted in good  
taste.  
Telephone for appointment.

## RAY'S BEAUTY STUDIO

233 POST STREET  
Mezzanine Floor  
Sutter 8691

Featuring BEAUTIFUL NATURAL COLD WAVES



# The Zebra Room

ATOP NOB HILL

COCKTAILS

LUNCH ★ DINNER

A sophisticated atmosphere where meals  
are better and charm is added by



## HUNTINGTON HOTEL

1075 CALIFORNIA

EUGENE N. FRITZ, Managing Owner

BY APPOINTMENT TO  
H. M. THE LATE KING OF PORTUGAL

# CORGO

## *Number One Cocktail*



**Try it! Here's How:** To a portion of iced Corgo Number One Fine Tawny Port add a twist of orange peel. Delightful taste treat.

Imported by WILLIAMS IMPORTERS. A Division  
of R. C. Williams & Co., Inc., 610 Fifth Ave., N. Y.

## OPERA GUILD MEMBERS—Continued

- |   |   |   |
|---|---|---|
| <p>Mr. Charles Kendrick<br/>Mrs. Henry S. Kiersted<br/>Mrs. J. R. Kleinjung<br/>Miss Caroline Korbel<br/>Mrs. Abraham Koshland<br/>Mrs. Daniel Koshland<br/>Mrs. Marcus S. Koshland<br/>Mr. Frederick Koster<br/>Mr. Gus Kroesen<br/>Mrs. H. N. Kuechler, Jr.<br/>Miss Esther Kuenz<br/>Mrs. Albert George Lang<br/>Mrs. Philip V. H. Lansdale<br/>Mrs. Roger D. Lapham, Jr.<br/>Mrs. Roger D. Lapham<br/>Mrs. Thomas Larke, Jr.<br/>Mrs. Charles G. Lathrop<br/>Mrs. T. M. Lauridsen<br/>Mrs. Claude Lazard<br/>Mrs. Louis Lengfeld<br/>Mr. John A. Lesoine<br/>Mr. Albert Lester<br/>Mrs. Sidney Liebes<br/>Miss Frances Marie Lilienthal<br/>Mr. F. L. Lipman<br/>Miss Edith Livermore<br/>Mrs. Carl Livingston<br/>Mr. and Mrs. James K. Lothead<br/>Mrs. John Logan<br/>Mrs. Dan E. London<br/>Mr. James W. McAlister<br/>Mrs. Atholl McBean<br/>Mr. A. M. McCarty<br/>Mrs. W. H. McCormick<br/>Mrs. D. E. McLaughlin<br/>Mrs. George P. McNear<br/>Mrs. Thomas P. Mailliard<br/>Dr. Ergo A. Majors<br/>Mrs. Vivian Mann<br/>Mrs. Walter Martin<br/>Mrs. Charles Mayer<br/>Mrs. William G. Merchant<br/>Mrs. R. P. Merillion<br/>Mr. and Mrs. Gaetano Merola<br/>Mrs. H. C. Merritt, Jr.<br/>Mrs. John B. Metcalf<br/>Mr. C. O. G. Miller<br/>Mrs. Harry East Miller<br/>Pvt. Franklin Mittau<br/>Mr. Edward F. Moffatt<br/>Mr. J. K. Moffitt<br/>Mrs. Kenneth Monteagle</p> | <p>Mr. Kenneth Monteagle<br/>Mr. and Mrs. Paige Monteagle<br/>Mr. George Montgomery<br/>Mrs. James W. Morgan<br/>Dr. Grace McCann Morley<br/>Miss Alicia Mosgrove<br/>Miss Laura Musto<br/>Mrs. A. N. Nathan<br/>Miss Julia M. Neppert<br/>Mr. J. LeRoy Nickel, Jr.<br/>Miss Mary Obujen<br/>Mrs. Jack Okell<br/>Mr. Benjamin J. Older<br/>Mrs. Julius Oppenheimer<br/>Mrs. William H. Orrick<br/>Mrs. William Parrot<br/>Miss Barbara Parrott<br/>Mr. Charles R. Page<br/>Mr. Philip P. Paschel<br/>Mrs. Oscar Butler Perry<br/>Mrs. George A. Pope, Jr.<br/>Mrs. Kenneth Pope<br/>Mrs. Hugh B. Porter<br/>Mrs. M. C. Porter<br/>Mr. J. Sheldon Potter<br/>Mrs. Jerome V. Powell<br/>Mrs. Stanley Powell<br/>Mr. and Mrs. Stanley Powell Jr.<br/>Mr. Walter G. Preddy<br/>Mrs. John Raggio<br/>Dr. Ralph Arthur Reynolds<br/>Mrs. H. A. Richardson<br/>Miss Gertrude Richter<br/>Mrs. James W. Roberts<br/>Mrs. Arline Miller Rolkin<br/>Mr. Robert A. Roos<br/>Mrs. Charles W. Rosenbaum<br/>Mrs. Angela Wing Russell<br/>Mr. F. W. Rubke<br/>Mrs. Henry Potter Russell<br/>Miss Pauline E. Ryder<br/>Miss Virginia Ryder<br/>Mr. Marcus L. Samuels<br/>Mrs. Karl Schaefer<br/>Mr. and Mrs. Carl Schaubey<br/>Mrs. Rudolph Schilling<br/>Mr. George B. Schirmer<br/>Mr. Nat Schmulowitz<br/>Mr. Albert Schwabacher<br/>Mrs. Carrie Schwabacher<br/>Mrs. Louis A. Schwabacher<br/>Mrs. Bert C. Scott</p> | <p>Mr. H. S. Scott<br/>Mr. and Mrs. Bruce Selfridge<br/>Mrs. Richard H. Shainwald<br/>Mrs. R. S. Shainwald<br/>Mrs. Nelson Towne Shaw<br/>Mrs. A. H. Shearer<br/>Mrs. Fred R. Sherman<br/>Mrs. Francis Shook<br/>Mrs. Stauffer Sigall<br/>Mrs. Rose Silver<br/>Mr. Charles W. Slack<br/>Mrs. Leon Sloss, Jr.<br/>Mrs. Leon Sloss<br/>Mrs. Louis Sloss<br/>Judge and Mrs. M. C. Sloss<br/>Mrs. Josephine A. Smith<br/>Capt. G. W. Somers<br/>Mrs. Warren Spieker<br/>Mrs. Robert Gordon Sproul<br/>Mrs. E. B. Stanwood<br/>Mr. and Mrs. B. V. Sturdivant<br/>Mrs. John A. Sutro<br/>Mrs. Oscar Sutro, Jr.<br/>Mr. Louis Sutter<br/>Mrs. Alfred B. Swinerton<br/>Miss June Tanzer<br/>Mrs. F. F. Thomas, Jr.<br/>Mrs. Myron I. Thomas<br/>Mrs. Miller Thomlinson<br/>Miss Barbara B. Thompson<br/>Mrs. Joseph Tobin<br/>Mr. Ernest J. Torregano<br/>Mrs. Nlon Tucker<br/>Mrs. John R. Upton<br/>Mrs. Sidney M. Van Wyck<br/>Mr. Paul Verdier<br/>Mr. Daniel Volkmann<br/>Mrs. Norman Waggoner<br/>Mrs. Ward Walkup<br/>Mrs. Clarence R. Walter<br/>Mrs. John I. Walter<br/>Mrs. Lingan Warren<br/>Mrs. Helen B. White<br/>Mr. H. G. White<br/>Mrs. Millard C. White<br/>Mrs. Frederick C. Whitman<br/>Mr. Stephen Williams<br/>Mrs. Theodore Wores<br/>Mrs. Clarence Young<br/>Mrs. V. Zaruba<br/>Mrs. Harold L. Zellerbach<br/>Mr. Edgar T. Zook</p> |
|---|---|---|

*An Instrument worthy of the Name*

"Beyond any shadow of a doubt, it surpasses anything I have heard in regard to tone quality, reliability, and appearance," says DAVID HALL, author of *The Record*

Book, monumental record-collector's reference book. Write for your copy of the unusual brochure: "How to Judge a High Quality Radio-Phonograph."

# Philharmonic

## RADIO-PHONOGRAPH



\*Trade Mark

Philharmonic Radio Corporation, Dept. 14, 528 East 72nd Street, New York

A TOUCH OF THE OLD WORLD



*Dinners at* **VENETO**  
*are a gourmet's delight!*

Delicious salads... slow-simmered, rich soups  
and tender, succulent meats and vegetables

389 BAY AT MASON • GARFIELD 9711



*She is naturally proud  
of her beautiful things—*

... Because they reflect good taste,  
discrimination and are truly fine examples  
of traditional Sloane craftsmanship.

*W & J Sloane*  
SUTTER near GRANT



## CONTRIBUTORS TO 1944 SEASON

Amberg-Hirth  
 Constant J. Auger  
 Baldwin Piano Company  
 Blue Network Co., Inc.  
 Blum's  
 Borden's Dairy Delivery Co.  
 Bullock & Jones  
 Davis-Schonwasser  
 City of Paris  
 City Transfer & Storage Co.  
 Columbia Concerts, Inc.  
 The Emporium  
 Julius Eppstein Florists  
 Fairmont Hotel  
 Fox West Coast Theatres  
 Goldstein & Company  
 Granat Bros.

Gump's  
 Hale Bros.  
 Hastings  
 Ernest Hirsch  
 Hotel St. Francis  
 Joseph's Florists  
 Carolyn Kelsey  
 KJBS  
 K. H. Lengfeld  
 H. Liebes & Company  
 Livingston Bros.  
 Carl D. Lovotti  
 Mr. & Mrs. Grover A. Magnin  
 I. Magnin & Company  
 Joseph Magnin  
 Maison Mendessolle  
 Mark Hopkins Hotel  
 Merrill's Drug Center

V. C. Morris  
 Musicians' Union, Local No. 6  
 National Broadcasting Co.  
 O'Connor, Moffatt & Co.  
 Palace Hotel  
 Pisani Ptg. & Pub. Co.  
 Podesta & Baldocchi  
 Ransohoffs  
 Roos Bros.  
 Schneider Bros.  
 Sherman, Clay & Company  
 Shreve & Company  
 Sommer & Kaufmann  
 Standard Oil Company  
 Weinstein & Company  
 The White House  
 Yellow Cab Company



World famous personalities, epicures and gourmets acclaim George Mardikian's cuisine. Lamb Shish Kebab with Pilaff — Rolled, stuffed Grape Leaves — Rose Petal Ice Cream!

Dinner and a la carte, cocktails. Open from 4:00 P. M. till midnight.

Every night is celebrity night.

FAMOUS *Omar Khayyam's* GEORGE MARDIKIAN at

OFARRELL STREET AT POWELL

## HOTEL CANTERBURY

750 SUTTER ST. • SAN FRANCISCO

*Excellent dining room*

This distinguished hotel is convenient to every downtown attraction. Rooms are finely appointed, all with bath.

## Madame Arpiné Inayetian

Former Associate Alfred Cortot, Paris

*Piano Technique and Interpretation — All Grades*

243 - 27TH AVENUE, SAN FRANCISCO • TELEPHONE EVERGREEN 3070

## GIFTS *that say "I'm thinking of YOU"*

Orchid Ceramic Pins and Earrings . . . Smocks for House and Victory Garden wear . . . "Good Luck Pixies" — the little figurines that really work wonders. 1000 suggestions.

## THE NATALIE SHOP

12 TILLMAN PLACE  
 Bet. Sutter & Post Sts.  
 Off Grant Avenue . . .

Phone: DOUGLAS 1502





THE  
**CLIFT**  
HOTEL

SAN FRANCISCO



*Home of the famous*  
**REDWOOD ROOM**  
*Geary at Taylor*



Los Angeles' finest address. Garden  
swimming pool and tennis court.

**The Town House**  
LOS ANGELES

Visit

The

New

**POWELL'S**  
*Smart Apparel*

51 Grant Avenue

*A Smart Shop*  
*For Junior Sizes*

*The* **DRUNKARD**

*3rd Year in San Francisco*

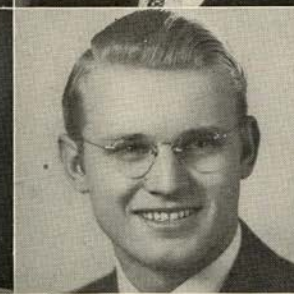
**DO NOT MISS THE BIGGEST  
LONG RUN SHOW OF  
THE CENTURY!**

**Will Close 29th**  
of this month

•  
*Don't be left out—make  
your reservations now!*

•  
**OPERA BOX OFFICE, CITY OF PARIS  
or THEATRE, BUSH ST. MUSIC HALL,  
ORdway 1109**





Reading from  
left to right

Goodwin  
De Lugg  
Vannucci  
Lorenzini

Tallone  
Karpelena  
Alibertini  
Levon

Heitman  
Wellman

Markham  
Berton

Guenter  
Bernhard  
Wahlin  
Schmidling

Martin  
Jacobs  
Sanders  
Doan

Gianopoulos  
Nelson

ARTISTS OF

*San Francisco*

OPERA COMPANY





# SAN FRANCISCO OPERA GUILD MEMBERS

## Addenda

Miss Edith E. Allyne	Mr. and Mrs. Grover A. Magnin	Mr. W. G. Thornton
Miss Lucy H. Allyne	Mrs. Charles O. Martin	Mrs. M. C. Threlkeld
Mr. T. E. Ambrose	Mrs. Howard Meadows	Dr. and Mrs. Harold Trimble
Miss Lillian Armsby	Mrs. Julian J. Meyer	Mrs. John S. Adler
Mrs. Leonora Wood Armsby	Mrs. Earl D. Minton	Mrs. R. M. Alvord
Mrs. Edward F. Barron	Mrs. Hans Nelson	Mrs. Samuel Bauer
Mr. Irving Bartel	Mr. John Francis Neylan	Mr. and Mrs. F. N. Belgrano, Jr.
Mrs. Charles Beardsley	Mrs. William H. Noble	Mrs. George Edwin Bennett
Mr. S. D. Bechtel	Miss Anna C. O'Brien	Mrs. Dikran M. Berberian
Mrs. James Hall Bishop	Mrs. Warren Olney, Jr.	Mrs. E. Bianco
Mr. and Mrs. Charles R. Blyth	Mr. Aram Poladian	Miss Nina Boyle
Mrs. T. J. Brennan	Miss Eva Powell	Mrs. Worthen Bradley
Mrs. B. J. Brun	Mrs. Carl Raiss	Mrs. Cabot Brown
Mrs. Edward J. Buckley	Mrs. William P. Roth	Dr. Edward John Buckley
Mrs. Arthur B. Cahill	Mr. James H. Schwabacher	Mrs. Edna W. Buckwalter
Mrs. John R. Cahill	Mr. R. O. Simon	Mrs. Betty Cohn
Mr. R. A. Cleaveland	Mrs. Ralph J. L. Stern	Mrs. Joseph J. Coney
Mr. Newton Booth Coghill	Mrs. Sigmund Stern	Dr. and Mrs. Frederick C. Cordes
Mrs. B. Hardin Corbin	Mr. and Mrs. Jerd Sullivan	Miss Mary Cook Coward
Mrs. Emile F. Cuenin	Mr. George C. Thierbach	Mrs. John Jewett Earle
Mrs. Cornelius J. Dall	Mrs. Edward Topham, Jr.	Miss Lucile Eising
Miss Florence Dean	Mrs. James W. Towne	Mrs. Harold E. Faber
Mrs. Frank P. Deering	Mr. Leslie R. Wilson	Mrs. Henry B. Friedrichs
Mrs. R. J. Dietrick	Mrs. Mary E. Wilson	Mrs. Algernon Gibson
Mrs. A. G. Dondero	Miss Barbara Urba Winkler	Mrs. A. H. Goldstone
Mr. Richard E. Doyle	Dr. Dorothy A. Wood	Mrs. Morgan A. Gunst
Miss Margaret L. Ely	Mr. and Mrs. George	Mrs. Abraham Haas
Miss Marian W. Ewes	Washington Baker, Jr.	Mrs. Timothy Hayes
Mr. Lionel W. Feigenbaum	Mr. and Mrs. R. I. Bentley, Jr.	Miss Marian Huntington
Mr. and Mrs. W. Parmer Fuller, Jr.	Mrs. Walter H. Bentley	Dr. Herbert G. Johnstone
Nellie Gaffney	Dr. Walter H. Brown	Mrs. Edward D. Keil
Miss Naida Gilmore	Mrs. Edith DeLee	Mr. Philip N. Lienthal, Jr.
Mrs. Joseph Grace	Mr. Charles Flammer	Mr. R. L. Litchfield
Mrs. Horace Guittard	Mr. Angelo Fusco	Mrs. Norman Livermore
Mrs. Randolph Hale	Miss Jane Goodfellow	Miss Ann M. Lovejoy
Mrs. William L. Halfpenny	Mrs. D. H. Grubb	Mrs. William Palmer Lucas
Mrs. John Lindsay Hanna	Mrs. Robert Hotle	Miss Marjorie Miller
Mrs. L. W. Harris	Mrs. Walter S. Johnson	Mrs. Joseph A. Moore
Mrs. Elystus Lyon Hayes	Mr. Percy L. King	Dr. W. H. Murphy
Mr. Benjamin H. Hicklin	Mr. A. J. Kirkpatrick	Mrs. John Archibald Newcomb
Mrs. Fentress Hill	Miss Frances Kosta	National Broadcasting Company
Mr. John W. Hopkins	Mrs. A. Lendle	Mrs. A. Leslie Oliver
Mrs. Thomas R. Hughes	Mrs. T. R. McCarron	Mrs. R. F. Paine
Mrs. Elizabeth Jongeneel	Mrs. Randolph W. Martenot	Mrs. Hall Roe
Mrs. T. Henshaw Kelly	Mrs. William H. Nolan	Mr. John N. Rosekrans
Mrs. John B. Knox	Mrs. Ashton Potter	Alice Seckels
Mrs. Lewis H. Lapham	Mr. A. S. Russell	Mrs. Walter Sedgley
Miss Rena Lazelle	Miss Violet V. Schoning	Mrs. George D. Smith
Mr. Felix A. Lenhart	Mr. Frederic R. Sherman	Mr. Jack Soderlund
Miss Elvira LeStrange	Mrs. Henry J. Siegler	Mrs. Powers Symington
Miss Louise Lovell	Mrs. Melville L. Smith	Mrs. Alfred S. Tubbs
Mrs. Decker McAllister	Mrs. Lawrence Strassburger	Mrs. Richard Walker
Mrs. John McGaw		Mr. Michel D. Weill

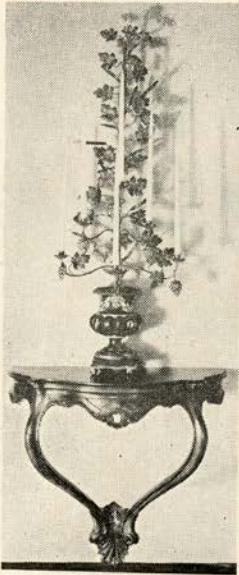
KSFO . . . . . "560 ON YOUR DIAL"

DEDICATED  
IN THE INTEREST OF  
PUBLIC SERVICE

STUDIOS "ATOP NOB HILL"

HOTEL MARK HOPKINS

FILL THE WAR CHEST



## BUY WAR BONDS

★

*Fine Antiques*

★

*Excellent  
Craftsmanship*

★

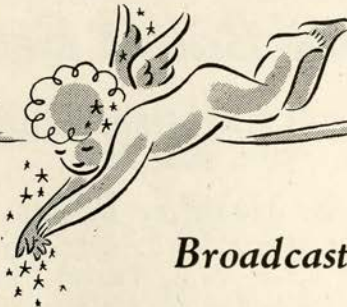
## K. H. LENGFELD

*Interior Decorator*

★

1409 SUTTER STREET, SAN FRANCISCO

# KFRC



*Broadcasting*

*The*

## SAN FRANCISCO OPERA SERIES

Evening performances — 10 p. m.

Sept. 29 • Oct. 5, 6, 11, 13, 17, 18, 20, 26, 27, 28

Sunday afternoons — 4 p. m. • Oct. 1, 8, 22

MUTUAL-DON LEE

610 ON YOUR DIAL



THE SAN FRANCISCO BALLET GUILD

MRS. JUILLARD McDONALD, *Pres.*

*Announces*

# *San Francisco Ballet*

WILLAM CHRISTENSEN  
*Artistic Director*

HAROLD CHRISTENSEN  
*Ballet School Director*

REYNOLD WIGGINS  
*Business Manager*

SEASON 1944-1945

*with*

**SAN FRANCISCO OPERA**

SEPT. 29 — NOV. 5



## *Second Annual Holiday Ballet Season*

*Children's Christmas Matinee*

SUN., Dec. 24

*Gala Holiday Ballet*

SAN FRANCISCO - - - WED., DEC. 27  
OAKLAND - - - THURS., DEC. 28  
SACRAMENTO - - - FRI., DEC. 29  
STOCKTON - - - SAT., DEC. 30



*Transcontinental Tour*

The Ballet leaves San Francisco Feb. 1st for an extended tour  
returning May 1st

*for the*

*Spring Ballet Homecoming*

(Date to be announced)

*Tickets for Holiday Ballet On Sale Normandy Lane Box Office. EX 8585*

# **"In the eyes of the law"**

Your Will, to you, may be a very personal matter, close to your heart.

But "in the eyes of the law" a Will is a formal, *legal document*, subject to strict legal interpretation.

Knowing this, a prudent man goes with his plans and purposes to his attorney so his Will can be drawn *in legal terms*; and thereafter reviews it periodically with his attorney to keep its provisions up to date.

By taking these simple precautions, he safeguards the interests of those he is most anxious to protect.

*An officer of our Trust Department will be glad to advise with you and your attorney.*

TRUST DEPARTMENT

**Wells Fargo**  
**Bank & UNION TRUST CO.**

SAN FRANCISCO • 20

Market at Montgomery • Market at Grant Ave.

*Established 1852*

Member F. D. I. C.





*Head and Shoulders*  
OVER OTHERS

**FOR MILDNESS... FOR BETTER TASTE**

*And as sure as night follows day... Chesterfield's definitely Milder Better Taste is the result of their...*

**RIGHT COMBINATION  
WORLD'S BEST TOBACCOS**

Make these 5 Key-words the key to your Smoking Pleasure, as they are for millions everywhere.

ASK FOR - **CHESTERFIELD**