

Martha

1944

Tuesday, October 3, 1944 8:15 PM

Sunday, October 8, 1944 2:30 PM

SFO\_PUB\_01\_SFO\_1944\_12

Publications Collection

San Francisco Opera Archives



*Twenty-second Annual Season*

**SAN FRANCISCO OPERA ASSOCIATION**

GAETANO MEROLA, *General Director*

**WAR MEMORIAL OPERA HOUSE**

**SEPTEMBER 29 TO OCTOBER 28, 1944**

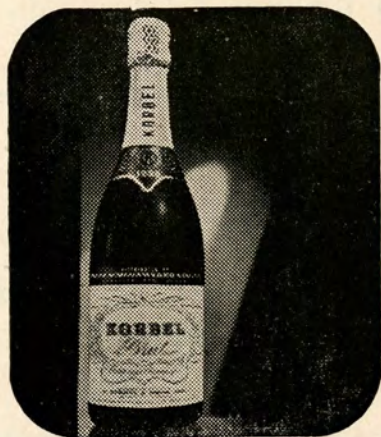


G. diàn

ORIGINAL

Gown Salon

Third Floor



## *It Stands Alone*

### **KORBEL BRUT IS TOPS IN AMERICAN CHAMPAGNE**

Magazines which reach the most sophisticated audience in the United States unanimously give first place in American Champagnes to KORBEL BRUT  
WE didn't say it first! THEY DID!

"THE BEST AMERICAN CHAMPAGNE to date is KORBEL BRUT 1933. Our guess is anyone would think it was imported." —Harper's Bazaar, February, 1941.

"PROBABLY THE MOST CHAMPAGNE-LIKE domestic wine is KORBEL BRUT 1933." —Cue Magazine, December 28, 1940.

"THE OUTSTANDING AMERICAN CHAMPAGNE to date is KORBEL BRUT 1933." —Town and Country, February, 1941.

"EXTREMELY ENJOYABLE, bone-dry and clean-tasting."—The New Yorker, March 15, 1941.

"AMONG THE FEW FINE CALIFORNIA CHAMPAGNES IS KORBEL BRUT, vintage 1933—a special cuvee which has been made as dry as the driest Champagnes for the English market." —St. Regis, Peacock Alley, The Ambassador, Plaza En Passant, The Savoyard, The Ritz Carlton, The Hampshire, The Sherry-Netherlands, Pierrot, January, 1941.

# **K O R B E L   B R U T**

Distributed by

**TRADERS DISTRIBUTING CO.**  
314 FRONT STREET, SAN FRANCISCO, CALIFORNIA

# QUALITY

*Style . . .* and a reputation  
in the making of smart  
Men's Clothing . . .

## WILLIAMS AND BERG CO.

GENERAL ENGLISH TAILORS

110 SUTTER STREET FRENCH AMERICAN BANK BUILDING



### KFRC

*Broadcasting*

*The*  
**SAN FRANCISCO OPERA SERIES**

Evening performances — 10 p. m.

Sept. 29 • Oct. 5, 6, 11, 13, 17, 18, 20, 26, 27, 28


Sunday afternoons — 4 p. m. • Oct. 1, 8, 22

MUTUAL-DON LEE

610 ON YOUR DIAL

**R**ECORDS of all the music you want at Sherman, Clay's many Pacific Coast music stores. Records of operas and operatic selections, of symphonies, of artists of today and yesterday. Records of dance bands sweet and hot, mood music of every kind. Records for the young set, for the sophisticates, for music lovers, for sentimentalists. Records for children, for students . . . records of every character and description here for you at Sherman, Clay & Co.



**Sherman**  **Clay**

8 PACIFIC COAST STORES SAN FRANCISCO OAKLAND  
SACRAMENTO SAN JOSE • FRESNO PORTLAND SEATTLE

# Pedro Domecq wears a White Tie

No formal dinner party would be right without white ties and formal gowns. Nor would it be quite correct without wine—a glass of fine Amontillado, Domecq's Selecto, with the soup, a table wine with the entree, and a mellow, golden cream Sherry, Domecq's Celebration Cream, with the dessert.

Ask your dealer to show you Pedro Domecq's range of Sherries. Your cellar without a noble Sherry like Domecq would be as incomplete as your wardrobe without evening clothes.

COMEX WINE & SPIRITS, INC.  
New York City San Francisco  
Bottled in Jerez, Spain. Alcohol 18 to 20% by volume

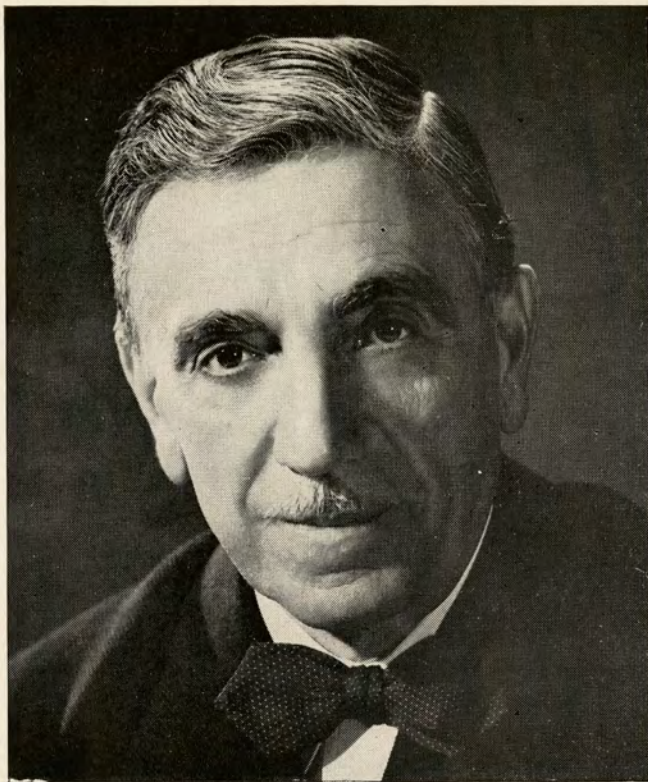


---

COCKTAIL BAR IN BASEMENT PROMENADE  
SERVICE ALSO ON DRESS CIRCLE AND MEZZANINE

---

Served at the Opera House BUFFET



★ ★ ★ ★ ★ ★ ★ ★ ★ ★ ★ ★ ★ ★ ★ ★

## GAETANO MEROLA

GENERAL DIRECTOR

This is the San Francisco Opera Company's 22nd Annual Season, its third war time season, and it is fitting that its friends pause a moment to take stock of the past and the present.

We can well be proud of twenty-two unbroken years of opera. On October 15, 1932, the War Memorial Opera House was dedicated by the opening performance of the 10th Season.

In the fall of 1941, the San Francisco Opera Company's annual tours to Sacramento, Los Angeles and Pasadena were extended to include Portland and Seattle.


It is estimated that since the inception of the San Francisco Opera Company twenty-two years ago, approximately 3,000,000 persons have attended its performances.

This season, notwithstanding war time conditions, the Opera Association will achieve its long sought desire to be truly the source of grand opera enjoyment of the entire west, through the broadcast of fourteen performances over thirty-eight stations of the Don Lee Mutual Broadcasting System.

We are grateful to Safeway Stores, the sponsor of these broadcasts, and we are sure that millions of listeners will join us in this formal expression of appreciation.

SAN FRANCISCO OPERA ASSOCIATION





AS SEEN IN

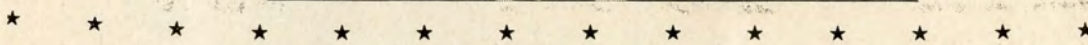
*Vogue*

FOREVER YOURS... the matchless beauty and distinction of your  
Granat Perfect Blue-White Solitaire Diamond, with its handmade  
Tempered Mounting,\* as seen In VOGUE. Choose from a nationally  
renowned collection of these exclusive creations... \$100 to \$1,000  
and more... at America's Largest Manufacturing Retail Jewelers.

★ TRADE MARK OF GRANAT BROS

*Granat Bros*  
SHREVE TREAT & EACRET

O F F I C E R S



**KENNETH MONTEAGLE**  
PRESIDENT

**MRS. STANLEY POWELL**  
VICE-PRESIDENT

**ARTHUR MERRILL BROWN, JR.**  
VICE-PRESIDENT

**CHARLES R. BLYTH**  
VICE-PRESIDENT

**GEORGE T. CAMERON**  
TREASURER

**EDWARD F. MOFFATT**  
SECRETARY

**BOARD OF DIRECTORS**

GEORGE WASHINGTON BAKER, JR.  
CHARLES R. BLYTH  
ARTHUR MERRILL BROWN, JR.  
GEORGE T. CAMERON  
WILLIAM W. CROCKER  
MORTIMER FLEISHACKER

TIMOTHY HEALY  
KENNETH MONTEAGLE  
JOHN FRANCIS NEYLAN  
MRS. STANLEY POWELL  
MRS. HENRY POTTER RUSSELL  
NIDN R. TUCKER

**EXECUTIVE STAFF**

**PAUL POSZ**  
BUSINESS MANAGER

**HOWARD G. HANVEY - CURRAN SWINT**  
PUBLICITY

**ARTHUR FRAHM-LALIA DECKER-PHYLLIS AMATI**  
TICKET SALES

**EVELYN CROCKETT-GERALD G. ROSS**  
OFFICE SECRETARIES



*Willat* COLD PERMANENT WAVE

HEATLESS PERMANENT WAVE, 1122 FOLSOM ST., SAN FRANCISCO 3, CALIF.

*Chic*... is the word for it.  
**a willat cold permanent wave**

Discriminating San Francisco women know that a Willat Cold Permanent Wave will help their hair to look its very smartest on First Nights at Theatre and Opera. Enjoy this cold permanent wave the next time you visit your favorite beauty salon and have a complimentary test curl to show you just how lovely your hair will look with a Willat Cold Permanent Wave.

FOR SOFT, LOVELY CURLS TRY A WILLAT WANDA WAVE. TRULY A MIRACLE WAVE...SO LOVELY, SIMPLE AND QUICK. WILLAT CIRCLETTE WAVE... THE DELUXE WAVE THAT'S SPRAYED INTO YOUR HAIR.

## BOARD OF GOVERNORS

GEORGE WASHINGTON BAKER, JR.	REUBEN B. HALE	MRS. JOHN FRANCIS NEYLAN
P. A. BERGEROT	MRS. LAWRENCE W. HARRIS	JOHN FRANCIS NEYLAN
CHARLES R. BLYTH	J. EMMET HAYDEN	ETTORE PATRIZI
J. BRENDAN BRADY	TIMOTHY HEALY	RALPH L. PHELPS
H. SEWALL BRADLEY	EDWARD D. KEIL	MRS. M. C. PORTER
ARTHUR MERRILL BROWN, JR.	CHARLES H. KENDRICK	MRS. STANLEY POWELL
GUIDO CAGLIERI	MRS. MARCUS S. KOSHLAND	STANLEY POWELL
MRS. GEORGE T. CAMERON	LEWIS A. LAPHAM	ANGELO J. ROSSI
GEORGE T. CAMERON	MRS. STINE LEIS	MRS. HENRY POTTER RUSSELL
CHARLES A. CHRISTIN	J. B. LEVISON	A. SBARBORDO
TEMPLETON CROCKER	MISS EDITH LIVERMORE	FRED R. SHERMAN
WILLIAM W. CROCKER	M. E. LOMBARDI	PAUL SHOUP
GEORGE E. CROTHERS	MISS RUTH W. LORING	MRS. M. C. SLOSS
MRS. FRANK P. DEERING	MISS SALLIE MAYNARD	RALPH J. A. STERN
MISS MARY C. DUNHAM	WILLIAM GLADSTONE MERCHANT	MRS. SIGMUND STERN
SIDNEY M. EHRMAN	MRS. C. O. G. MILLER	MRS. DAVID ARMSTRONG TAYLOR
MRS. WILLIAM M. FITZHUGH	ROBERT W. MILLER	M. C. THRELKELD
MORTIMER FLEISHHACKER	EDWARD F. MOFFATT	NIGN R. TUCKER
A. P. GIANNINI	KENNETH MONTEAGLE	RANDOLPH C. WALKER
RANDOLPH HALE	GUIDO MUSTO	WHITNEY WARREN, JR.



## WAR MEMORIAL OPERA HOUSE

(OWNED AND OPERATED BY THE CITY AND COUNTY OF SAN FRANCISCO  
THROUGH THE BOARD OF TRUSTEES OF THE WAR MEMORIAL)

### BOARD OF TRUSTEES

GUIDO J. MUSTO PRESIDENT	CHARLES G. KLEUPFER VICE-PRESIDENT	WALTER A. LEONETTI
SIDNEY M. EHRMAN	DAN S. HEWITT	FELIX S. MCGINNIS
ALVIN GERLACK	J. BRUCE JONES	HARRY A. MILTON
WILBUR A. HENDERSON		RALPH J. A. STERN
EDWARD SHARKEY MANAGING DIRECTOR OF THE WAR MEMORIAL		IRA G. THOMPSON SECRETARY TO THE BOARD OF TRUSTEES

---

*Buffet Service in Basement Promenade and Dress Circle during all performances*

---

LIBRETTOS AND OPERA GLASSES IN FOYER · HEAD SETS FOR THE DEAF ARE  
AVAILABLE AT TABLE IN MAIN FOYER · ATTENDANT WILL CONNECT  
WITH SEAT LOCATION UPON REQUEST · FOR LOST AND FOUND  
INFORMATION, INQUIRE AT CHECK ROOM NO. 1

WILLIAM A. MEADE, DIRECTOR OF HOUSE SERVICE



## AIR RAID PRECAUTIONS

The Opera House is "blacked out" and all facilities have been inspected and approved by Civilian Defense authorities. As an additional factor for your safety, trained Air Raid Wardens are on duty during performances  
**PLEASE OBEY ALL INSTRUCTIONS OF THE AIR RAID WARDENS**

Rent  
**Exercycle**  
Electrically Operated  
Relaxing Exercise

CALL  
**EXERCYCLE CO.**  
455 POWELL STREET  
SAN FRANCISCO  
YUkon 1456



# SAN FRANCISCO OPERA COMPANY

GAETANO MEROLA  
GENERAL DIRECTOR

ARMANDO AGNINI  
STAGE AND TECHNICAL DIRECTOR

KURT HERBERT ADLER  
CHORUS DIRECTOR

ETIENNE BARONE  
ASSISTANT STAGE DIRECTOR

WILLAM CHRISTENSEN  
BALLET MASTER

JESSIE KEENE  
PRODUCTION SECRETARY

☆

## CONDUCTORS and ASSISTANTS

GAETANO MEROLA

PIETRO CIMARA

NAOUM BLINDER  
CONCERT MASTER

WILLIAM STEINBERG

KARL RIEDEL OTELLO CIRONI

ANTONIO DELL'OREFICE

GEORGE SEBASTIAN

KURT HERBERT ADLER

JULIUS HAUG  
LIBRARIAN

## ARTISTS

LICIA ALBANESE ✓  
SOPRANO

EVARISTO ALIBERTINI  
BARITONE

LORENZO ALVARY  
BASS

ALICE AVAKIAN  
CONTRALTO

SALVATORE BACCALONI ✓  
BASS

ALTON BERNHARD  
TENOR

ANTHONY BERTON  
TENOR

LELIA CAMBI  
SOPRANO

GEORGIA GIANOPULOS  
SOPRANO

VIVIAN DELLA CHIESA ✓  
SOPRANO

HARRY DE LUGG  
TENOR

ALESSIO DE PAOLIS  
TENOR

LILY DJANEL ✓  
SOPRANO

PHILIP DOAN  
TENOR

JOHN GARRIS  
TENOR

GEORGE CEHANDVSKY  
SOPRANO

HERTA GLAZ  
CONTRALTO

CHARLES GOODWIN ✓  
BASS

PAUL GUENTER  
BARITONE

MARGARET HARSHAW  
CONTRALTO

ELMA HEITMAN  
SOPRANO

MARY BELLE JACOBS  
SOPRANO

FREDERICK JAGEL ✓  
TENOR

RADUL JOBIN ✓  
TENOR

HELENE KARPELENIA  
SOPRANO

CHARLES KULLMAN  
TENOR ✓

BRUNO LANDI  
TENOR

KATHLEEN LAWLOR  
SOPRANO

NEVART LEVON  
SOPRANO

MAX LORENZINI  
BARITONE

VIRGINIA MACWATTERS  
SOPRANO ✓

MARY HELEN MARKHAM  
SOPRANO

BENJAMIN MARTIN  
BARITONE

ROBIN NELSON  
BARITONE

JAN PEECE  
TENOR

IVAN PETROFF ✓  
BARITONE

EZIO PINZA ✓  
BASS

LILY PONS ✓  
SOPRANO

STELLA ROMAN ✓  
SOPRANO

W. VERNON SANDERS  
BASS

ALLEN SCHMIDLING  
TENOR

ROBERTO SILVA ✓  
BASS

RISE STEVENS  
SOPRANO

GEORGE TALLONE  
TENOR

HUGH THOMPSON  
BARITONE

JOSEPH TISSIER  
TENOR

CLARAMAE TURNER  
CONTRALTO

FRANCESCO VALENTINO ✓  
BARITONE

ALBERT VANNUCCI  
TENOR

THELMA VOTIPKA  
SOPRANO

FRED WAHLIN  
BASS

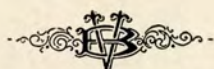
LEONARD WARREN  
BARITONE

EDWARD WELLMAN  
BARITONE



*Pierre, Foreman of Beaulieu Vineyard Number Two.*

In the heart of Napa Valley, where soil and climate are congenial for the wine grape, the tradition of fine wine-making is being kept alive by the skill of Beaulieu vintners. Grapes of the finest, light-bearing varieties, allowed to develop in small casks and in the bottle, yield their delicate flavor to the fine wines of Beaulieu Vineyard. You will experience the same pride in serving them at your table, as the Beaulieu vintners take in making them.



*Quality not Quantity*

IS THE DISTINGUISHING MARK OF

*Beaulieu Vineyard*

**BV**

*Beaulieu Vineyard*

Vineyards and Winery: Rutherford, Napa Co., Calif.

Offices: 300 Montgomery St., San Francisco 4, Calif.

Since 1900

Pay for your American Citizenship • Buy War Bonds



PONS



JOBIN



ALBANESE



PINZA



ROMAN



KULLMAN



STEVENS  
LANDI.



PEERCE  
GLAZ



DELLA CHIESA



☆  
**ARTISTS OF**  
*San Francisco*  
**OPERA COMPANY**





San Francisco Tradition

BEFORE THE OPERA  
... Dine in the exquisite Garden Court

AFTER THE OPERA  
... Dance in the Rose Room to the music of  
JAN SAVITT  
and his orchestra

The  
PALACE HOTEL  
EDMOND A. RIEDER, General Manager



This is one way to make clothes last  
a long time.

A more practical method is to buy  
things made of Bemberg\* rayon.

\*BEMBERG is the registered trade-mark of AMERICAN BEMBERG CORPORATION



WARREN



DJANEL



JAGEL



BACCALONI



HARSHAW



VALENTINO



SILVA  
PETROFF



CEHANOVSKY  
MACWATTERS



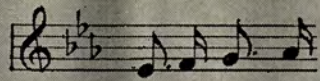
ALVARY



☆  
**ARTISTS OF**  
*San Francisco*  
**OPERA COMPANY**  
 ☆



*A Tone Poem*



*in*

*Light and Shadow*

*A portrait study*

*by*

*Nicholas Johnston*

Miss Ruby Asquith, Ballerina . . . S. F. Ballet Company

427 Post Street  
(In the St. Francis Hotel)  
YU kon 2061

*Nicholas Johnston*

MASTER PHOTOGRAPHER

## CHORAL ENSEMBLE

MISSES		MESSRS.	
VIOLET AURAND	MARY BELLE JACOBS	EVARISTO ALIBERTINI	MAX LORENZINI
VIRGINIA BELLINGER	HELENE KARPELENIA	ALBERT BARRETT	AUGUST LOURENZO
BIANCA BRUNI	LUCILLE KIRTLLEY	ALTON BERNHARD	ALLAN LOUW
LORRAINE CALCAGNO	KATHLEEN LAWLOR	ANTHONY BERTON	GIULIO MANCINI
LELIA CAMBI	NEVART LEVON	LOUIS BRAUNSTEIN	BENJAMIN MARTIN
ELIZABETH CASE	DOROTHY MCINTYRE	SEBASTIAN CAMPAGNA	CARLO MANNUCCI
ELEANOR CORYELL	MARY HELEN MARKHAM	GALLIANO DANELUZ	ROBIN NELSON
SEDA DER GARABEDIAN	DELPHIA PHILLIPS	KENNETH DAVIES	LLOYD PEASE
BARBARA FRITZ	MARY RHETT	FLOYD DAVIS	WILLIAM PETERSON
GEORGIA GIANOPULOS	ELIZABETH JANE SANDERSON	LORENZO DE BEAL	W. VERNON SANDERS
DALE GOODWIN		AMERIGO DEL GRANDI	ALLEN SCHMIDLING
ELMA HEITMAN	MARY LEE SMITH	HARRY DE LUGG	BRUCE STEWART
ROSE AGNES HERSCH	VERA SOLAX	ARTHUR DE MASI	GEORGE TALLONE
ORTHELLA HUGHES	CLARAMAE TURNER	PHILIP DOAN	ALBERT VANNUCCI
		WILLIAM GORMAN	EDWIN VANNUCCI
		PAUL GUENTER	FRED WAHLIN
			EDWARD WELLMAN

DORA DE TANO, ACCOMPANIST

## BALLET

RUBY ASQUITH, PREMIER DANSEUSE		EARL RIGGINS, PREMIER DANSEUR	
SOLOISTS		PRINCIPAL DANCERS	
MISSES	MISSES	MISSES	MESSRS.
CELENA CUMMINGS	LOIS TREADWELL	HOPE LINTZ	JOAQUIN FELCH
MATTLYN GEVURTZ	JOCELYN VOLLMAR	JYMMI RIEDEL	ROBERT HANSEN
ROSALIE PROSCH	ONNA WHITE	PEGGY SWIFT	RUSSELL HARTLEY
		WANA WILLIAMS	FRANK NELSON
		KATHERINE BEATTIE	ROBERT THORSON
		GINA CHAPPELL	

### CORPS DE BALLET

MISSES	MISSES	MISSES	MESSRS.
GENEVIEVE ASONOVITCH	VERA GOLD	JACKIE LA FETRA	EDWINA NOBLE
BARBARA BADERTSCHER	ANTOINETTE GUHLKE	SALLY WHALEN	VIRGINIA POOLE
BONNIE BELL	HELENA HENDERSON	JUNE WILSON	JOAN VICKERS
JOAN BENNET	NANCY JACOBSON	FIALA MRAZ	

### PRODUCTION

JULIAN DOVE—FRITZ KRAENKE Scenic Artists	EARL MCBUIRE Master Carpenter	CHARLES J. HOLZMUELLER Master Electrician
	JOHN T. HEAVEY Master of Properties	

### FOR WAR MEMORIAL OPERA HOUSE

S. E. SIMMONS Master Carpenter	EDWARD J. ZETTEL Master Electrician	CLAUDE L. WAGGONER Master of Properties
-----------------------------------	--	--

### COSTUMES AND WIGS BY GOLDSTEIN & CO.

ALEXANDER AGNINI Wardrobe Master	INEZ DODSON Wardrobe Mistress	SUE MCGOWAN Hairdresser	EVERETT MASON Chief of Makeup
-------------------------------------	----------------------------------	----------------------------	----------------------------------

### PROGRAM

PISANI PRINTING & PUBLISHING COMPANY, PUBLISHERS, DESIGNERS AND PRINTERS



**ACME**  
..the beer with the  
high I.Q. (It Quenches!)



ACME BREWERIES San Francisco • Los Angeles

# Repertoire

## REGULAR SERIES

- AIDA (*Verdi*) . . . . . Friday Night, September 29, at 8:00  
 With Roman, Harshaw, Jagel, Warren, Pinza, Alvary, De Paolis, Votipka.  
 MEROLA, Conductor
- MARTHA (*von Flotow*) . . . . . Tuesday Night, October 3, at 8:15  
 With Albanese, Glaz, Landi, Alvary, Baccaloni, Goodwin, Lawlor, Gianopoulos, Levon,  
 Cambi, Martin, Wahlin, Guenter, Doan, A. Vannucci. MEROLA, Conductor
- LAKME (*Delibes*) . . . . . Friday Night, October 6, at 8:30  
 With Pons, Jobin, Cehanovsky, Silva, Glaz, Votipka, Karpelenia, Avakian, Garris, Martin,  
 De Lugg, Tallone. CIMARA, Conductor
- MANON (*Massenet*) . . . . . Tuesday Night, October 10, at 8:30  
 With Albanese, Kullman, Valentino, Alvary, De Paolis, Cehanovsky, Levon, Bernhard,  
 Wellman. CIMARA, Conductor
- THE SECRET OF SUZANNE (*Wolf-Ferrari*) . . . . . Friday Night, October 13, at 8:30  
 With MacWatters, Thompson, De Paolis. ADLER, Conductor
- followed by
- SALOME (*Richard Strauss*)  
 with Djanel, Jagel, Harshaw, Valentino, Glaz, Garris, Alvary, De Paolis, Cehanovsky, Tis-  
 sier, Nelson, Wellman, Goodwin, Schmidling, Berton, Heitman. SEBASTIAN, Conductor
- FALSTAFF (*Verdi*) . . . . . Monday Night, October 16, at 8:00  
 With Baccaloni, Landi, Petroff, Della Chiesa, Albanese, Harshaw, Glaz, Garris, De Paolis,  
 Alvary, Lawlor. STEINBERG, Conductor
- FAUST (*Gounod*) . . . . . Wednesday Night, October 18, at 8:00  
 With Jobin, Pinza, Della Chiesa, Warren, Glaz, Votipka, Cehanovsky.  
 STEINBERG, Conductor
- THE MASKED BALL (*Verdi*) . . . . . Friday Night, October 20, at 8:00  
 With Roman, Peerce, Warren, Harshaw, MacWatters, Alvary, Silva, Cehanovsky, Tallone,  
 Lorenzini. STEINBERG, Conductor
- LES CONTES D'HOFFMAN (*Offenbach*) . . . . . Tuesday Night, October 24, at 8:15  
 With Jobin, Glaz, MacWatters, Djanel, Albanese, Pinza, Valentino, Cehanovsky, Alvary,  
 Turner, De Paolis, Tissier, Garris, Goodwin, Wellman, Sanders. MEROLA, Conductor
- CARMEN (*Bizet*) . . . . . Friday Night, October 27, at 8:00  
 With Stevens, Kullman, MacWatters, Valentino, Alvary, Votipka, Avakian, Cehanovsky,  
 De Paolis. SEBASTIAN, Conductor

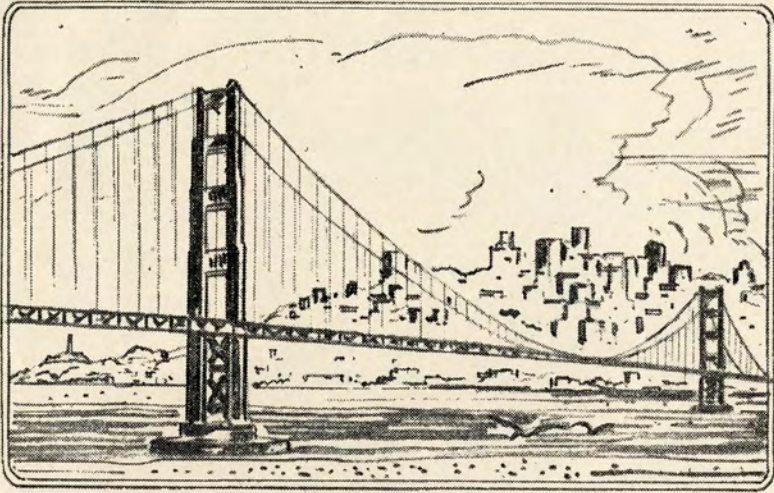
## POPULAR SERIES

- LA BOHEME (*Puccini*) . . . . . Thursday Night, October 5, at 8:30  
 With Albanese, MacWatters, Kullman, Valentino, Pinza, Cehanovsky, Baccaloni, Alibertini,  
 Lorenzini. MEROLA, Conductor
- LUCIA DI LAMMERMOOR (*Donizetti*) . . . . . Wednesday Night, October 11, at 8:15  
 With Pons, Peerce, Alvary, Petroff, Votipka, Garris, Tissier. CIMARA, Conductor
- AIDA (*Verdi*) . . . . . Sunday Afternoon, October 15, at 2:15  
 With same cast as in the Regular Series performance.
- THE SECRET OF SUZANNE (*Wolf-Ferrari*) . . . . . Thursday Night, October 19, at 8:30  
 With same cast as in the Regular Series performance.
- followed by
- SALOME (*Richard Strauss*)  
 With same cast as in the Regular Series performance.
- FALSTAFF (*Verdi*) . . . . . Thursday Night, October 26, at 8:00  
 With same cast as in the Regular Series performance.

## EXTRA PERFORMANCES

- LA FORZA DEL DESTINO (*Verdi*) . . . . . Sunday Afternoon, October 1, at 2:15  
 With Roman, Jagel, Warren, Pinza, Baccaloni, Glaz, Votipka, Alvary, De Paolis, Cehanovsky.  
 MEROLA, Conductor
- MARTHA (*von Flotow*) . . . . . Sunday Afternoon, October 8, at 2:30  
 With same cast as in the Regular Series performance. RIEDEL, Conductor
- RIGOLETTO (*Verdi*) . . . . . Tuesday Night, October 17, at 8:15  
 With Warren, Pons, Peerce, Silva, Glaz, Cehanovsky, Nelson, Wellman, De Paolis, Votipka,  
 Markham, Lawlor. CIMARA, Conductor
- MANON (*Massenet*) . . . . . Sunday Afternoon, October 22, at 2:30  
 With same cast as in the Regular Series performance.
- LES CONTES D'HOFFMANN (*Offenbach*) . . . . . Saturday Night, October 28, at 8:15  
 With same cast as in the Regular Series performance.

THE EXTRA PERFORMANCES OF "MANON" AND "RIGOLETTO" ARE OPERA ASSOCIATION  
 CONCERT ATTRACTIONS



**THE METROPOLIS**  
*of the*  
**FUTURE**

War-time activities keep the Port of San Francisco alive and humming today.

Let us all cooperate to keep the San Francisco Bay Area the industrial center of the West after the war.



**THE SAN FRANCISCO BANK**

SAVINGS      *Incorporated Feb. 10, 1868*      TRUST

*Member Federal Deposit Insurance Corporation*

SEVEN OFFICES . . . EACH A COMPLETE BANK

PARKER S. MADDUX, *President*

---

*THE CONCERT DIVISION OF THE*

SAN FRANCISCO OPERA ASSOCIATION

GAETANO MEROLA, *General Director*

PAUL POSZ, *Business Manager*

*Announces*

THE TWO ALL-STAR OPERA HOUSE SERIES



*8 — Evening Events — 8*

RIGOLETTO	Oct. 17
BALLET Russe de MONTE CARLO	Nov. 21
ZINO FRANCESCATTI	Jan. 22
BIDU SAYAO	Feb. 21
DRAPER and ADLER	Mar. 5
JAMES MELTON	Mar. 23
RISE STEVENS	Apr. 17
ANOTHER EVENT TO BE ANNOUNCED	



*8 — Sunday Matinee Events — 8*

MANON	Oct. 22
DON COSSACKS (Gen. Platoff)	Nov. 19
BALLET Russe de MONTE CARLO	Nov. 26
ROBERT CASADESUS	Dec. 3
ADOLF BUSCH and his Little Symphony	Feb. 25
DOROTHY MAYNOR	Mar. 4
LAWRENCE TIBBETT	(Date not announced)
ANOTHER EVENT TO BE ANNOUNCED	

•

**WAR MEMORIAL OPERA HOUSE**

Tickets on sale at Opera Box Office, Normandy Lane, City of Paris — EX. 8585

*Order Your Season Tickets Now, While Choice Seats Are Available*

---



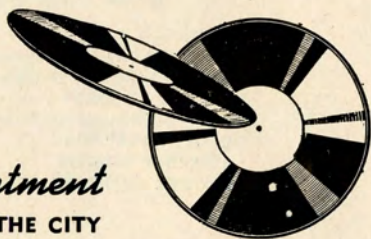
THE OFFICIAL PIANO *of the*  
SAN FRANCISCO OPERA COMPANY

BALDWIN



*Choose your Piano as the Artists Do*

VISIT OUR *Record Department*  
ONLY GROUND FLOOR RECORD DEPT. IN THE CITY



---

**THE BALDWIN PIANO CO.**

---

310 SUTTER STREET, SAN FRANCISCO  
1828 WEBSTER STREET, OAKLAND

MUSICAL ASSOCIATION OF SAN FRANCISCO

presents

**SAN FRANCISCO  
SYMPHONY ORCHESTRA**

**PIERRE MONTEUX, *Conductor***

LEONORA WOOD ARMSBY  
*President and Managing Director*

HOWARD K. SKINNER  
*Business Manager*

Thirty-third Season — Dec. 1 to April 14

**FOUR SERIES**

EIGHT FRIDAY AFTERNOONS at 2:15

FOUR THURSDAY EVENINGS at 8:30

TWELVE SATURDAY EVENINGS at 8:30  
(Repeats of Friday Afternoon and Thursday Evening Concerts)

BRAHMS FESTIVAL — 3 EVENINGS at 8:30

**GUEST ARTISTS**

*Pianists*

ARTUR SCHNABEL • ANIA DORFMANN • ARTUR RUBINSTEIN  
WITOLD MALCUZYNSKI • LEONARD PENNARIO

*Violinists*

ERICA MORINI • HEIFETZ • NAOUM BLINDER

*Vocalists*

LOTTE LEHMANN • DUSOLINA GIANNINI • FREDERICK JAGEL  
MUNICIPAL CHORUS

*Guest Conductors*

EFRAM KURTZ • CARLOS CHAVEZ • LORIN MAAZEL

---

TICKETS — SYMPHONY BOX OFFICE — SHERMAN, CLAY — *SUtter 1331*

---

WAR MEMORIAL OPERA HOUSE

MUNICIPAL CONCERTS

1944-1945

THE ART COMMISSION

Presents

SAN FRANCISCO SYMPHONY ORCHESTRA

PIERRE MONTEUX, Conductor

DECEMBER 9



ALEXANDER BRAILOWSKY

THE POET OF THE PIANO IN AN ALL RUSSIAN PROGRAM

JANUARY 25



YEHUDI MENUHIN

SAN FRANCISCO'S OWN BRILLIANT GENIUS OF THE VIOLIN

FEB. 1-2-3-4  
8-9-10-11



RUSSIAN BALLET  
BALLET THEATRE

10 SPECTACULAR PERFORMANCES

MARCH 2



MARIAN ANDERSON

THE GREATEST CONCERT ARTIST OF THE DAY

APRIL 10



GRACE MOORE

RAOUL JOBIN

IN CONCERT VERSION OF "LOUISE"



FIVE STAR SEASON

Season Reservations Now!

\*SIX EVENTS including opening night of Ballet Theatre and choice of any one other Ballet performance, also the four guest artist concerts. \$11.40, \$8.40, \$6.90, \$4.80, \$3.60, tax incl. BOX OFFICE, Sherman, Clay, SU 1331



DE PAOLIS



VOTIPKA



GARRIS



TURNER



TISSIER



AVAKIAN



LAWLOR

# ARTISTS OF *San Francisco* OPERA COMPANY

## HOW TO PRONOUNCE THEIR NAMES

- |  |   |
|--|---|
| ✓ LILIA ALBANESE<br><i>Lee'-chee-ah Ahl-bah-nay'-zay</i>           | ✓ FREDERIC JAGEL<br><i>Frederick Yay-gel</i>                |
| ✓ LORENZO ALVARY<br><i>Lorenzo Ahl-vah'ry</i>                      | ✓ RAOUL JOBIN<br><i>Rah-ool Zhoh-ban'</i>                   |
| ARMANDO AGNINI<br><i>Ar-mahn'-dow Ah-nee'nee</i>                   | ✓ BRUNO LANDI<br><i>Brew-no Lahn'-dee</i>                   |
| ✓ SALVATORE BACCALONI<br><i>Sahl-vah-tow'-ray Bach-ah-low'-nee</i> | ✓ GAETANO MEROLA<br><i>Gah-yay-tahn'-oh Mare'-oh-lah</i>    |
| ETIENNE BARONE<br><i>Et-yehn Bah-row'-nay</i>                      | ✓ IVAN PETROFF<br><i>Ee-vahn Pet-roff</i>                   |
| ✓ GEORGE CEHANOVSKY<br><i>George Chay-han-off'-skee</i>            | ✓ EZIO PINZA<br><i>Et'-see-oh Peen'-zah</i>                 |
| VIVIAN DELLA CHIESA<br><i>Vivian Dell-lah-Kee-ay'-zah</i>          | ✓ LILY PONS<br><i>Lee-lee Pawnce</i>                        |
| ✓ OTELLO CERONI<br><i>Otello Chay-row'-nee</i>                     | KARL RIEDEL<br><i>Karl Ree-dell</i>                         |
| ✓ ANTONIO DELL'OREFICE<br><i>Antonio Dell-oh-refff'-ee-chay</i>    | ✓ STELLA ROMAN<br><i>Stay-lah Row-mahn'</i>                 |
| ALESSIO DE PAOLIS<br><i>Ah-less'-see-oh Deh Pah'-oh-leece</i>      | ✓ ROBERTO SILVA<br><i>Ro-bare'-tow Seel-vah</i>             |
| LILY DJANEL<br><i>Lee-lee Zhan-nell</i>                            | RISE STEVENS<br><i>Ree'-suh Stevens</i>                     |
| HERTHA GLAZ<br><i>Hair-tah Glahz</i>                               | ✓ FRANCESCO VALENTINO<br><i>Francesco Vah-lenn-teen'-oh</i> |

*Tribute  
Silk*



A Gump-created hostess gown in celadon green, sapphire blue, Imperial yellow and Chinese plum. The material, Tribute Silk, now virtually unobtainable, was used by the Chinese to pay taxes.

*Mandarin Room*

**GUMP'S**

250 POST STREET

TUESDAY NIGHT, OCTOBER 3, at 8:15

## †MARTHA

Opera in four acts and six scenes. Music by Friedrich von Flotow.

Text by St. George and Friedrich

### THE CAST

Lady Harriet, maid of honor to Queen Anne.....	LICIA ALBANESE
Nancy, her confidante.....	HERTA GLAZ
Plunkett, a wealthy farmer.....	LORENZO ALVARY
Lionel, his foster-brother, later Earl of Derby.....	*BRUNO LANDI
Sir Tristan, Lady Harriet's cousin.....	SALVATORE BACCALONI
The Sheriff of Richmond.....	CHARLES GOODWIN
First Maid.....	*GEORGIA GIANOPULOS
Second Maid.....	KATHLEEN LAWLOR
Third Maid.....	*NEVART LEVON
Farmer.....	BENJAMIN MARTIN
Woman Farmer.....	LEILA GAMBI
Lackeys.....	{ FRED WAHLIN, PAUL GUENTER *PHILIP DOAN, ALBERT VANNUCCI

*Ladies, Servants, Farmers, Hunters, Huntresses, Pages.*

*\*San Francisco debut*

Corps de Ballet

### STAGE DIRECTOR

ARMANDO AGNINI

### CONDUCTOR

GAETANO MEROLA

### CHORUS DIRECTOR

KURT HERBERT ADLER

**TIME AND PLACE:** About 1840; Rural England

Act I: Scene 1: Boudoir of Lady Harriet

Scene 2: The Fair at Richmond

Act II: Room in Plunkett's Farmhouse

Act III: Hunting Park in Richmond Forest

Act IV: Scene 1: Same as Act 2

Scene 2: Replica of Act I, Scene 2

†Extra Performance of "Martha" Sunday Matinee, October 8

---

SEATS FOR ALL REMAINING PERFORMANCES ARE  
AVAILABLE AT OPERA BOX OFFICE, CITY OF PARIS

---

*Encores not permitted — Bell rings three minutes before curtain rises*

## The Story of "Martha"

### ACT I

Lady Harriet, weary of court pleasures, is envious of the joyous note in the voices of singing girls passing on their way to the servant's market at Richmond Fair. For diversion she determines to visit the fair and with difficulty persuades her friend, Nancy, and her stiff-minded cousin-admirer, Sir Tristan, to dress as peasants and accompany her. (Scene 2) In their disguise they meet the rich farmer Plunkett and his foster-brother, Lionel. The latter is of unknown birth but possesses a ring by which he hopes some day to be recognized. After playful banter with the two young farmers, during which they take service under the names of Martha and Betsy, the girls find, to their consternation, that in accepting a shilling each from the men they have actually bound themselves for a year's service. They protest but the judges decide against them and they are driven away to Plunkett's farm.

### ACT II

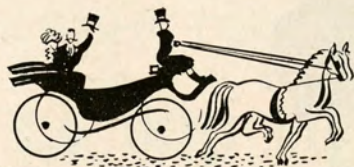
As "Martha" and "Betsy," the household inexperience of the girls is very evident. They try in vain to spin. The brothers admire them sufficiently to undertake their training. The susceptible Lionel falls deeply in love with Martha and when, at his request, she sings for him, he declares his love. Although she admires Lionel, Martha does not intend to carry the joke to this extent. Later in the evening, admonished by Tristan, who has followed them, she and Nancy escape into the night. Becoming aware of their flight, the brothers sound the alarm. The whole neighborhood starts in pursuit.

### ACT III

Plunkett and a group of farmers are gathered at an inn adjoining a royal forest hunting preserve. A Queen's hunting party, among them Nancy, enters. Plunkett recognizes her but she and her companions drive him away. Lionel arrives soon followed by Lady Harriet. Seeing her, he first implores, then demands, that she return to his services. She disowns him and calls for help. He is about to be arrested but his grief moves Lady Harriet to intercede for him declaring that he is a madman and unworthy of serious notice. Lionel is driven frantic by her cruelty. Remembering the ring he gives it to Plunkett to take to the Queen who is passing by. Through it he is identified as the son of the Earl of Derby, and his title and possessions are restored to him.

### ACT IV

Plunkett grieves over the plight of Lionel whose mind has become clouded. Lady Harriet, who now realizes her love for Lionel, enters with Nancy and asks that she be left alone to meet him. When Lionel comes she tells him of his new found position and declares her love and repentance at her treatment of him. Lionel refuses to accept his rank and spurns her in hatred as Nancy and Plunkett, following upon the scene, make their peace. (Scene 2) To restore Lionel to his mental balance the scene at Richmond Fair has been reproduced on Lady Harriet's estate. Harriet, dressed as Martha, greets Lionel as he arrives with Plunkett. His mind is immediately cleared and all is well.



*"Those Good Old Days"*  
*revived at*

*Ed Goman's*  
**OLYMPIAN** **THEATRE**

OPERA UNDER THE STARS

*Gilbert and Sullivan's*

Delightful Operettas

at the

**GREEK THEATRE**

Presented by

THE SAVOY OPERA COMPANY

SAT., OCT. 7, 8:15 P. M.

**H. M. S. PINAFORE and**  
**TRIAL BY JURY**

SAT., OCT. 14, 8:15 P. M.

**PIRATES OF PENZANCE**  
**and TRIAL BY JURY**

**STAR CAST — COMPANY OF 60**

**SYMPHONY ORCHESTRA**

Directed by Fritz Berens

SPONSORED BY: UNIVERSITY OF CALIFORNIA

Berkeley Campus Committee on Music and Drama

Prices: 2.40, 2.10, 1.80, 1.20, tax included

On Sale Opera Box Office, City of Paris. EXbrock 8585.





## BEAUTY.

### PURPLE PATH TO HAPPINESS.

In every age, in every civilization, beauty has smoothed the path toward happiness. Whatever loveliness you have, heighten it, cultivate it, hold it against the years with the beauty preparations of Germaine Monteil. They will serve your beauty well, making it glow more brightly today, guarding it for tomorrow and tomorrow.

*Germaine Monteil*

THURSDAY NIGHT, OCTOBER 5, at 8:30

## LA BOHEME

Opera in four acts. Music by Giacomo Puccini.

Text by Giacosa and Illica.

### THE CAST

Mimi, an embroideress.....		LICIA ALBANESE
Musetta, a grisette.....		*VIRGINIA MacWATTERS
Rudolph, a poet.....	The Four Bohemians	CHARLES KULLMAN FRANCESCO VALENTINO GEORGE CEHANOVSKY EZIO PINZA
Marcel, painter.....		
Schaunard, musician.....		
Colline, philosopher.....		
Benoit, an importunate landlord Alcindoro, state councilor and admirer of Musetta.....		SALVATORE BACCALONI
Customhouse Sergeant.....		EVARISTO ALIBERTINI
Customhouse Guard.....		MAX LORENZINI
A Boy.....		*MARY BELLE JACOBS

*Students, Work-Girls, Grisettes, Shopkeepers, Vendors, Waiters, Soldiers, etc.*

*\*San Francisco debut*

#### STAGE DIRECTOR

ARMANDO AGNINI

#### CONDUCTOR

GAETANO MEROLA

#### CHORUS DIRECTOR

KURT HERBERT ADLER

**TIME AND PLACE:** About 1830; Paris

Act I: Garret of the Bohemians

Act II: Terrace of the Cafe Momus

Act III: A City Gate of Paris

Act IV: Same as Act I

*Because of copyright the story of the opera cannot be printed.*

---

SEATS FOR ALL REMAINING PERFORMANCES ARE  
AVAILABLE AT OPERA BOX OFFICE, CITY OF PARIS

---

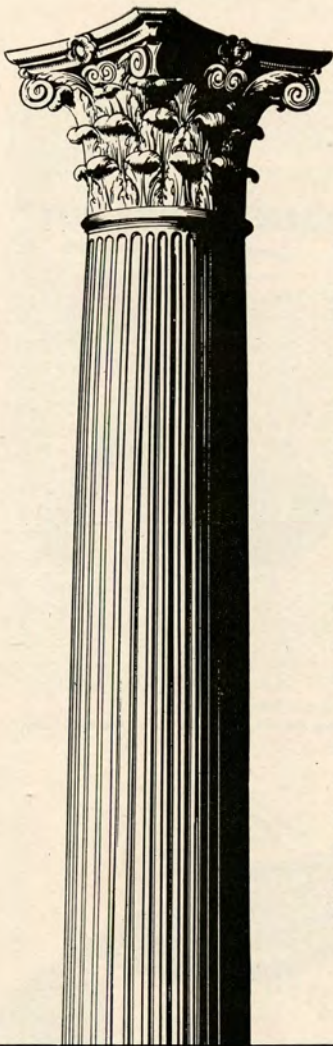
*Encores not permitted — Bell rings three minutes before curtain rises*

*Printing has been called an Art. "The Art of Preserving all Arts", But Printing as an Art, requires a Skilled Craftsman, Adequate Equipment and Wide Experience. The Pisani Printing & Publishing Company offers you all these to meet your every need*



700 MONTGOMERY—SUTTER 4772

SAN FRANCISCO  
PHONE SUTTER 4772



## Your WILL cannot bequeath "good judgment"

By intelligent management you have built up your Estate. Your Will sets up the Plan you want your Executor to follow.

If you appoint an *individual* as Executor and Trustee, will his judgment in handling your estate match your judgment in creating it? And will he remain always in good enough health, and be free enough from his own personal affairs to give your Plan his best attention?

On the other hand, by appointing this Bank as Executor and Trustee you are definitely assured specialized experience, group judgment and careful attention throughout the life of your estate. Our *continuing staff* of seasoned estate managers can and do faithfully follow both the letter and the spirit of your Plan.

Get details from any officer of this Bank.

Head Office: 400 CALIFORNIA STREET  
Mission Branch: 16TH & JULIAN AVENUE

**THE BANK OF  
CALIFORNIA**  
NATIONAL ASSOCIATION

Founded in 1864

SAN FRANCISCO · PORTLAND · SEATTLE · TACOMA

BUY U. S. WAR BONDS  
AND STAMPS

1944  
OUR  
EIGHTIETH  
ANNIVERSARY  
YEAR



DANCING ON THE PENINSULA  
in the beautiful  
**GARDEN ROOM**  
EVERY SATURDAY EVENING  
*featuring the romantic voice of*  
**BOB KEELY**

with the  
**BENJAMIN FRANKLIN HOTEL**  
ORCHESTRA

IN SAN MATEO  
30 MINUTES FROM SAN FRANCISCO

*Hotel* **BENJAMIN**  
**FRANKLIN**  
SAN MATEO CALIF.

DUANE GOWLAND, Mgr.



California Grape Brandy 84 proof.  
Cresta Blanca Wine Company, Inc., Los Angeles, Calif.

*The Proscenium Arch*



is built to be the frame for  
pictures created upon a stage.  
To form these pictures many are called  
to help. . . . The Moving, Living and Col-  
orful pictures, so full of delightful detail  
captivate the eye. . . . It has been our  
privilege to offer to the Opera Lovers of  
San Francisco the products of our effort.  
For many years we have been the exclusive  
designers and producers of costumes for  
this outstanding organization. May we be  
of service to you.

**GOLDSTEIN & CO.**

989 Market St.

Est. 1868

GAfield 5150

# OPERA BOX HOLDERS

Season 1944

MR. AND MRS. C. ROBERT ADAMS ✓	MRS. LEWIS LAPHAM
MR. AND MRS. GEORGE WASHINGTON BAKER, JR. ✓	MR. AND MRS. JULLIARD McDONALD
MRS. GEORGE EDWIN BENNETT ✓	MR. AND MRS. FELIX MCGINNIS
MR. AND MRS. CHARLES R. BLYTH	MR. AND MRS. FREDERICK W. McNEAR
MR. AND MRS. JAMES PARKS BRADLEY	MR. AND MRS. GAETANO MEROLA ✓
MR. AND MRS. JOHN DAVIS BRADLEY	MR. AND MRS. C. O. G. MILLER
MR. AND MRS. ROY BRONSON	MR. AND MRS. EPPS J. MILLER
MR. AND MRS. GEORGE T. CAMERON	MR. AND MRS. KENNETH MONTEAGLE ✓
MR. AND MRS. WILLIAM W. CROCKER	MRS. STANHOPE NIXON
MRS. FRANK P. DEERING	MRS. GEORGE A. POPE
MR. AND MRS. SIDNEY M. EHRMAN ✓	MRS. ARLINE M. ROLKIN
MR. AND MRS. MORTIMER FLEISHHACKER	MRS. HENRY POTTER RUSSELL
DR. AND MRS. FRANK R. GIRARD	SAN FRANCISCO OPERA GUILD
MR. AND MRS. JOSEPH T. GRACE	JUDGE AND MRS. M. C. SLOSS ✓
MR. AND MRS. CHARLES L. HARNEY	MRS. SIGMUND STERN ✓
MRS. I. W. HELLMAN ✓	MR. AND MRS. BERTRAM V. STURDIVANT ✓
MRS. ALFRED HERTZ	DR. AND MRS. DAVID ARMSTRONG TAYLOR ✓
MR. AND MRS. CLARENCE LORAN JOHNSTON ✓	MR. AND MRS. NION R. TUCKER
MRS. MARCUS S. KOSHLAND	

Angelo J. Rossi Co. INC.

45 Grant Avenue

Douglas 8060

Flowers

*Distinctive Creations for All Occasions*

FLOWERS TELEGRAPHED ANYWHERE

Angelo J. Rossi Co., Inc.

Angelo J. Rossi, Pres. and Mgr.

*Famous for Flowers Since 1885*

*A Visit After the Opera to the*

**CARDINAL RICHELIEU** *Cocktail Lounge*

IS A PERFECT ENDING TO A PERFECT DAY

THE COCKTAIL LOUNGE WITH  
A DISTINCTIVE ATMOSPHERE

**THE RICHELIEU HOTEL**  
VAN NESS AT GEARY

Time Tonight

for a la carte supper

and Midnight Show

**MAYRIS  
CHANEY'S  
GLAMOUR-TIME  
REVUE!**

Starring

**RAY THOMAS**

*America's Newest & Funniest Comedian*

**DOUG RICHARDSON**

*and his "Marionettes" (Held over)*

**TERRY ANDRE**

*Gorgeous Singing Starlette*

**MARYANNE BAXTER**

*and her "Dance of the Petals"*

*The Glittering Mayris Chaney*

**"BEVY OF BEAUTIES"**

**FRANKLYN SMITH**

*and his Entertaining Orchestra*

**DINNERS from \$2.00**

**No Cover Charge**



*1st Show  
at 7:30 p.m.*

**DAVE HERSCH'S ROMANTIC**

**RICHELIEU CASINO**

1039 GEARY ST.

ORdway 0113

# GUARANTOR MEMBERS

*of the*

## SAN FRANCISCO OPERA ASSOCIATION

C. Edgar Adams	Mr. and Mrs. James A. Brown	Florence E. Dean
Mr. and Mrs. C. Robert Adams	Mrs. Louis C. Brown	Mrs. Charles J. Deering
Mrs. John S. Adler	Ralph Brown	Mrs. Frank P. Deering
Mrs. Wallace M. Alexander	Walter Brown	In Memoriam
Lucy H. Allyne	Mrs. E. E. Brownell	Frank P. Deering
T. E. Ambrose	Starr Bruce	Mrs. Georges de Latour
Mr. & Mrs. George Washington Baker, Jr.	Mr. and Mrs. Frank E. Buck	Frank H. Denman
Edward R. Bacon	Dr. Leonard W. Buck	Mr. and Mrs. John Michael Desch
A. R. Baldwin	Thomas Buck	Richard Detert
B. A. Banker	Mrs. Neil Buckley	Mrs. Robert T. Devlin
Mrs. John T. Barnett	Mrs. Felix Butte	Mrs. Donald R. Dickey
Peter Barnett	John R. Cahill	Mrs. L. W. Dinkelspiel
Mrs. Edward F. Barron	Dr. William Otis Callaway	Mrs. Samuel L. Dinkelspiel
Irving P. Bartel	Mr. and Mrs. George T. Cameron	Mr. and Mrs. O. Dewey Donnell, Jr.
Mr. and Mrs. Robert S. Beall	Leo Cardoza	Katharine Donohoe
Mr. and Mrs. F. N. Belgrano, Jr.	Estelle Carpenter	Mrs. F. A. Dorn
John Bender	Selah Chamberlain, Jr.	Mrs. Lambert Dunbar
Mr. and Mrs. David Benioff	Charles A. Christin	Dr. Muriel E. Edwards
Mrs. George E. Bennett	Mrs. Tobin Clark	Mr. and Mrs. Albert L. Ehrman
Mrs. Charles H. Bentley	Mrs. Warren D. Clark	Mrs. Alfred Ehrman
Mrs. Walter H. Bentley	Mrs. John P. Coghlan	Sidney M. Ehrman
Dr. and Mrs. Tholow Binkley	Mr. and Mrs. George D. Cohn	Mrs. S. W. Ehrman
Newton Bissinger	Mrs. Max M. Cohn	Wilfred Eldred
W. Harry Blatchly	Mrs. Colbert Coldwell	H. A. Ellis
Louis Bloch	Persis H. Coleman	John W. Elwood
Charles R. Blyth	Mr. and Mrs. Jesse Colman	Mrs. Milton H. Esberg
Mrs. Angus Gordon Boggs	H. D. Collier	Mrs. Harold K. Faber
Mrs. Robert C. Bolton	J. J. Coney	Paul I. Fagan
Mrs. George M. Bowles	Mary R. Conlin	Lionel B. Feigenbaum
Dr. Karl M. Bowman	Dr. and Mrs. Frederick C. Cordes	Mrs. Alexander Field
Louise A. Boyd	Mrs. W. M. Craig	Mr. and Mrs. Marshal H. Fisher
Walter C. Brauns	Arthur S. Crites	Mortimer Fleishhacker
Mrs. William Ellery Briggs	William W. Crocker	John F. Forbes
Mr. and Mrs. Roy A. Bronson	George E. Crothers	Mr. and Mrs. Edward T. Ford
Mrs. Julia Fox Brooke	R. K. Davis	Jennie S. Frank
George W. Brooks	Mrs. Stuart Davis	Mr. and Mrs. Thomas G. Franck
Dr. LeRoy Brooks	Davis-Schonwasser	William Fries
Arthur M. Brown, Jr.		

# FLOWERS

MAKE THE PERFECT GIFT...THEY SPEAK ALL  
LANGUAGES...AND THEY WILL BE ESPECIALLY  
ELOQUENT IF THEY ARE FROM...

*Podesta & Baldocchi*

America's Most Famous Florists

224 GRANT AVENUE, SAN FRANCISCO

Telephone: SUTTER 6200





*The World's Only True*

## DAPHNE

**ROLLEY** alone has captured the fresh, natural fragrance of the Daphne . . . in superb quality perfume or rich, full-bodied cologne. True Daphne is but one of the Forty Famous Fragrances in perfume and matching cologne awaiting your selection.

Perfume . . . \$1.25 dram  
to \$8.00 ounce.  
Matching Cologne, \$2.00  
for 3 ounces.  
Add 20% Federal Tax

**ROLLEY**  
**PERFUMES**



"TRULY AMERICA'S FINEST"

.08 GEARY NEAR GRANT . . . 361 SUTTER BELOW STOCKTON . . . EXBROOK 4471



There's a Fine art in bread  
making, too. Every **OROWEAT**  
loaf is a masterpiece.

The **GRIST-MILL BAKERS**

# **OROWEAT**

## GUARANTOR MEMBERS — *Continued*

Nelly Gaffney  
 Maurice A. Gale  
 L. Galtie  
 Vallejo Gantner  
 Mr. and Mrs. Henry Gede, Jr.  
 James P. George  
 D. Lyle Ghirardelli  
 Mrs. Domingo Ghirardelli  
 George B. Gillson  
 Dr. Arthur Collis Gilson  
 Dr. and Mrs. Frank R. Girard  
 Mr. and Mrs. Harry Gittings, Jr.  
 Rosemary Glosz  
 Louis Goldstein  
 Lutie D. Goldstein  
 Mr. and Mrs. Jack Gomperts  
 Lorraine C. Goodman  
 Mr. and Mrs. Joseph T. Grace  
 Mrs. Joseph D. Grant  
 Mrs. Maurice S. Greenberg  
 Stuart N. Greenberg  
 Mrs. Frederick S. Greenlee  
 Gustav Gumpel  
 Madeleine Haas  
 Marshal Hale  
 Prentis C. Hale, Jr.  
 R. B. Hale  
 Herbert E. Hall  
 Eminent P. Halsted  
 W. F. Hanrahan  
 Mrs. Robert D. Harden  
 W. Glenn Harmon  
 Mrs. Charles L. Harney  
 Maurice E. Harrison  
 Mrs. Russell P. Hastings  
 Mrs. Elystus Hayes  
 Mrs. Timothy Hayes  
 A. W. Hazen  
 Mrs. E. S. Heller  
 Walter D. Heller  
 Walter S. Heller  
 Mrs. I. W. Hellman  
 Mrs. Robert B. Henderson

Mrs. Rudolph G. Henning  
 Dr. Ernest E. Hessing  
 Leslie W. Hills  
 Mr. and Mrs. Harry Hiip  
 Osgood Hooker  
 L. Arundel Hopkins  
 Mrs. H. A. Hornlein  
 Dr. John F. Huffman  
 Marian Huntington  
 Mrs. James Irvine  
 Dr. S. Nicholas Jacobs  
 R. J. Jansen  
 Clancy Ann Jefferys  
 Mr. and Mrs. Louis Jefferys  
 Ector R. Johnson  
 Mr. and Mrs. Clarence Lorán Johnston  
 General Kenyon A. Joyce  
 Mrs. Ira Kahn  
 Henry J. Kaiser  
 Edward D. Keil  
 H. C. Kelsey  
 Charles Kendrick  
 Marion H. Kent  
 Percy L. King  
 Dr. John J. Kingston  
 R. W. Kinney  
 Mrs. Josephine R. Kleinjung  
 Mrs. William E. Kleinsorge  
 Robert L. Kline  
 Caroline Korbel  
 Elsa R. Korbel  
 Mrs. Jesse Koshland  
 Mrs. Marcus S. Koshland  
 Frederick J. Koster  
 Mr. and Mrs. Edwin V. Krick  
 Gus Kroesen  
 Esther Kuenz  
 Mrs. Albert George Lang  
 Mrs. Philip Lansdale  
 Mrs. Lewis Lapham  
 Mrs. Charles G. Lathrop  
 Edwin Leitch

John A. Lesoine  
 J. B. Levison  
 Philip N. Lienthal  
 Mr. and Mrs. Samuel Lienthal  
 Mr. and Mrs. William J. Lindenberg  
 Clarence R. Lindner  
 F. L. Lipman  
 Mrs. Norman B. Livermore  
 Mr. and Mrs. James K. Lothead  
 Mrs. A. J. Lowrey  
 Louis R. Lurie  
 Edmunds Lyman  
 James W. McAlister  
 Mr. and Mrs. A. M. McCarty  
 Adelaide McColgan  
 Mrs. William H. McCormick  
 Mr. and Mrs. Juilliard McDonald  
 Mrs. Mark L. McDonald  
 Mrs. John McGaw  
 Mr. and Mrs. Felix S. McGinnis  
 Mrs. Alfred McLaughlin  
 Mrs. Clarissa McMahan  
 Mrs. George P. McNear  
 Peter Macris  
 Mr. and Mrs. Grover A. Magnin  
 Mrs. J. W. Mailliard, Jr.  
 Mrs. Joseph A. Mancini  
 Mr. and Mrs. George M. Mardikian  
 Edward Martin  
 Mr. and Mrs. R. W. Martenet  
 A. C. Mattei  
 Harry D. Maxwell  
 Evelyn Mendessolle  
 Mr. and Mrs. Gaetano Merola  
 Mrs. Helen Merritt  
 Mrs. George H. C. Meyer  
 Mr. and Mrs. Julian Meyer  
 Mrs. C. F. Michaels  
 Mr. and Mrs. C. O. G. Miller  
 Mr. and Mrs. Epps J. Miller  
 Mr. and Mrs. Edward F. Moffatt  
 Henrietta Moffat

REMEMBER THE NAME

*Freed-Eisemann*

when you buy your post-war radio-phonograph with FM

*"One of the world's great radio-phonographs"*

Freed Radio Corporation, New York, N. Y.



BUY MORE WAR BONDS!

# VANESSI'S

GOOD FOOD



COLUMBIA CONCERTS, INC.

Presents

**"GREAT NAMES IN MUSIC"**

*Appearing 1944 San Francisco Opera Season*

LICIA ALBANESE  
LORENZO ALVARY  
CHARLES KULLMAN

MARGARET HARSHAW  
LILY PONS  
RISE STEVENS

*Appearing San Francisco Opera Concert Series, 1944-1945*

ROBERT CASADESUS  
ADOLF BUSCH LITTLE SYMPHONY  
DON COSSACKS (PLATOFF)  
DRAPER AND ADLER

DINO FRANCESCATTI  
DOROTHY MAYNOR  
JAMES MELTON  
BIDU SAYAO  
RISE STEVENS

*Appearing with San Francisco Symphony, 1944-1945 Season*

HEIFETZ  
YEHUDI MENUHIN

ERICA MORINI  
CARLOS CHAVEZ

LORIN MAAZEL  
EFREM KURTZ

COLUMBIA CONCERTS, Inc. 113 West 57th Street, New York

San Francisco Representative, PAUL POSZ, War Memorial Opera House

Los Angeles Representative, L. E. BEHYMER, 415 Auditorium Building

## GUARANTOR MEMBERS — *Continued*

James K. Moffitt  
 Mr. and Mrs. Kenneth Monteagle  
 Mr. and Mrs. Paige Monteagle  
 Frederick H. Montgomery  
 Mrs. Joseph A. Moore  
 A. C. Morici  
 Guido J. Musto  
 Laura Musto  
 Mr. and Mrs. A. E. Nelson  
 Mr. and Mrs. Ralph R. Nelson  
 Julia M. Neppert  
 Arthur A. & Hugo D. Newhouse  
 Dr. and Mrs. Alfred Newman  
 Mr. and Mrs. John Francis Neylan  
 Mrs. Stanhope Nixon  
 Mrs. Mary L. Obujeni  
 Benjamin J. Older  
 Mrs. Edwin Letts Oliver  
 Mr. and Mrs. Charles R. Page  
 Mrs. S. H. Palmer  
 Mrs. Henry Passow  
 Dr. Sadie D. Patek  
 Peninsula Box Office  
 Mrs. O. B. Perry  
 George W. Phillips, Jr.  
 Mrs. Grattan D. Phillips  
 Mrs. Herman Phleger  
 Mr. and Mrs. G. Pisani  
 Aram Poladian  
 Mrs. George A. Pope  
 Mrs. Paul Posz  
 Mrs. Ashton H. Potter  
 Mr. and Mrs. Stanley Powell  
 Colonel John Sedgwick Pratt  
 Dr. Edward Purcell  
 John B. Quigley  
 Mrs. Carl Raiss  
 A. S. Rees  
 Dr. and Mrs. Ralph A. Reynolds  
 Neville J. Rich  
 Mrs. H. A. Richardson

Mrs. Nathan Rogers  
 Mrs. Arline M. Rolkin  
 Col. and Mrs. Robert A. Roos  
 Mr. and Mrs. John N. Rosekrans  
 Leland S. Rosener  
 Mrs. Angela Wing Roth  
 Mr. and Mrs. William P. Roth  
 John Rothschild  
 Ken F. Royce  
 Mohr M. Rubin  
 Frank K. Runyon  
 Mrs. A. S. Russell  
 A. K. Salz  
 Horace H. Scales  
 Mr. and Mrs. Carl Schaubye  
 Elsie Schilling  
 Dr. Walter Schilling  
 George B. Schirmer  
 Mrs. Frank Schwabacher  
 James H. Schwabacher  
 Mrs. Louis A. Schwabacher  
 Harry S. Scott  
 Don Searle  
 Mr. and Mrs. Richard H. Shainwald  
 Mr. and Mrs. R. S. Shainwald  
 Mrs. Nelson Towne Shaw  
 Frederic R. Sherman  
 Richard O. Simon  
 Mrs. Norman J. Sinclair  
 Mrs. Edgar Sinton  
 Charles W. Slack  
 Mrs. Leon Sloss  
 Judge and Mrs. M. C. Sloss  
 Stanley C. Smallwood  
 Mr. and Mrs. Charles Watt Smith  
 Capt. George Willard Somers  
 Fred H. Spiess  
 Mrs. Edward B. Stanwood  
 G. A. Starkweather  
 Mr. and Mrs. Ralph J. A. Stern  
 Mrs. Sigmund Stern

Dr. and Mrs. John Philip Strickler  
 Benka Strickler  
 John P. Strickler III  
 B. V. Sturdivant  
 Mr. and Mrs. Walter H. Sullivan  
 Mrs. Ernest J. Sultan  
 Mr. and Mrs. Alfred Sutro  
 Louis Sutter  
 E. J. Sweetland  
 Mrs. Andrew B. Talbot  
 Mrs. David Armstrong Taylor  
 Mr. and Mrs. William Timson  
 George C. Thierbach  
 Mrs. Myron I. Thomas  
 E. W. Thompson  
 Mr. and Mrs. Morley Thompson  
 Mr. and Mrs. C. R. Tobin  
 Mr. and Mrs. Ernest J. Torregano  
 Dr. and Mrs. Harold Guyon Trimble  
 Gina Troya  
 Mrs. Alfred Tubbs  
 Mr. and Mrs. Nion R. Tucker  
 Mr. and Mrs. Daniel Volkmann  
 George Wagner  
 Morton Wallace  
 Whitney Warren, Jr.  
 Mr. and Mrs. Michel D. Weill  
 Mrs. Millard C. White  
 Cynthia V. Whitman  
 Rich Whitmore  
 Mrs. F. A. Wickett  
 Robert L. Wiel  
 Mr. and Mrs. Brayton Wilbur  
 Stephen Williams  
 Mrs. J. L. Wolf  
 Barbara Young  
 Mr. and Mrs. F. A. Zane  
 Mrs. V. Zaruba  
 Joan Zeegers  
 Mr. and Mrs. J. D. Zellerbach  
 Edgar T. Zook



World famous personalities, epicures and gourmets acclaim George Mardikian's cuisine. Lamb Shish Kebab with Pilaff — Rolled, stuffed Grape Leaves — Rose Petal Ice Cream!

Dinner and a la carte, cocktails. Open from 4:00 P. M. till midnight.

Every night is celebrity night.

Omar & Khayyam's  
 FAMOUS & GEORGE MARDIKIAN at

O'FARRELL STREET AT POWELL

## HOTEL CANTERBURY

750 SUTTER ST. • SAN FRANCISCO

*Excellent dining room*

This distinguished hotel is convenient to every downtown attraction. Rooms are finely appointed, all with bath.

### Madame Arpiné Inayetian

Former Associate Alfred Cortot, Paris

*Piano Technique and Interpretation — All Grades*

243 - 27TH AVENUE, SAN FRANCISCO • TELEPHONE EVERGREEN 3070



**KARL C. WEBER**  
President and  
General Manager

At the Civic Center . . . so conveniently near . . .  
Hotel Whitcomb is the home of the Whitcomb  
Inn, the Dickens Pub and The Parade Cocktail  
Lounge.

HOTEL **WHITCOMB**  
MARKET STREET AT 8TH



*Simi Vineyard*  
FINE CALIFORNIA WINES

When entertaining, serve superb SIMI  
vintage table wines . . . Burgundy,  
Cabernet, Carignan, Zinfandel, and  
Larose, Sauterne, Chablis . . . ma-  
tured with unhurried care from  
choicest Sonoma hillside grapes  
. . . ask for SIMI . . . pronounced  
See-Me . . . at your dealer's.

**PARROTT & CO. . . San Francisco . . Sole U. S. Distributors**

# SAN FRANCISCO OPERA GUILD, INC.

MRS. ROGER D. LAPHAM, JR., *Chairman*

MRS. JOHN PHILLIP COGHLAN, JR., *Vice-Chairman*

MRS. STANLEY POWELL, *Vice-Chairman*

MRS. FREDERICK WHITMAN, *Secretary*

MR. JERD SULLIVAN, *Treasurer*

## Members

Mrs. Lloyd S. Ackerman  
 Mrs. Arthur C. Adams  
 Mr. C. Edgar Adams  
 Mrs. Alexander Albert  
 Mrs. Wallace M. Alexander  
 Mrs. Berrien Anderson  
 Miss Margaret Andrews  
 Mr. Noel T. Arnold  
 Mrs. R. M. Barthold  
 Mrs. Edward Otis Bartlett  
 Mrs. Julian Palmer Beek  
 Mr. A. M. Benfield  
 Mrs. G. Grace Benoit  
 Mrs. Charles H. Bentley  
 Miss Jessie E. Benton  
 Dr. and Mrs. Tholow Binkley  
 Mrs. Roy N. Bishop  
 Mrs. Charles N. Blair  
 Miss Jennie M. Blair  
 Miss Phyllis Bliss  
 Mr. Louis Bloch  
 Miss Ruth V. Bloch  
 Mrs. Walter W. Boardman  
 Mrs. Angus Gordon Boggs  
 Mrs. George M. Bowles  
 Miss Louise A. Boyd  
 Mr. and Mrs. James Parks Bradley  
 Mr. H. Sewall Bradley  
 Mr. and Mrs. John D. Bradley  
 Mrs. M. J. Brandenstein  
 Mrs. Edward Bransten  
 Mrs. W. C. Brauns  
 Mrs. A. F. Bray  
 Miss Bogardus Brodt  
 Mrs. Julia Fox Brooke  
 Mr. Arthur M. Brown, Jr.  
 Mrs. Hillyer Brown  
 Mrs. E. E. Brownell  
 Mr. Frank J. Brucato  
 Mrs. Starr Bruce  
 Mr. Starr Bruce  
 Lt. and Mrs. Neil Buckley  
 Mrs. Robert B. Burroughs  
 Miss Estelle Carpenter  
 Dolores Calles  
 Major C. J. Carey  
 Mr. George T. Cameron  
 Mr. Russell Carpenter  
 Mrs. John Casserly  
 Mrs. A. L. Chickering  
 Mr. Drew Chidester

Madame Clara  
 Mrs. John P. Coghlan  
 Mrs. John Phillip Coghlan, Jr.  
 Mr. John P. Coghlan  
 Mrs. Max M. Cohn  
 Miss Persis H. Coleman  
 Mr. H. D. Collier  
 Mrs. Jesse D. Colman  
 Miss Mary R. Conlin  
 Mrs. W. B. Cope  
 Mrs. Charles Crocker  
 Mr. Templeton Crocker  
 Judge George E. Crothers  
 Mrs. John D. Crummey  
 Mrs. O. K. Cushing  
 Mrs. Chester Dahl  
 Mrs. John F. Davis  
 Mrs. Charles J. Deering  
 Mrs. Georges deLatour  
 Mr. Frank H. Denman  
 Mr. and Mrs. John Michael Desch  
 Mrs. Lloyd W. Dinkelspiel  
 Mrs. Samuel L. Dinkelspiel  
 Mr. and Mrs. Dewey Donnell  
 Miss Katherine Donohoe  
 Mrs. Warrington Dorst  
 Mrs. Paul M. Downing  
 Mrs. Frank R. Dray  
 Mrs. H. B. Drescher  
 Mrs. Lambert Dunbar  
 Mrs. Charles Dunphy  
 Dr. Muriel E. Edwards  
 Mr. Philip Ehrlich  
 Mrs. Alfred Ehrman  
 Mrs. Sidney Ehrman  
 Mrs. Milton H. Esberg  
 Mrs. Walter Filer  
 Mrs. Marshall Fisher  
 Mrs. Herbert Fleishhacker, Jr.  
 Mrs. Mortimer Fleishhacker, Jr.  
 Mrs. George Flood  
 Mrs. B. C. Floyd  
 Mrs. John F. Forbes  
 Mrs. Bernard W. Ford  
 Mrs. W. Parmer Fuller, III  
 Mrs. Alfred Ghirardelli  
 Mr. D. Lyle Ghirardelli  
 Mrs. Domingo Ghirardelli  
 Dr. and Mrs. Thomas A. Gibson  
 Mr. George B. Gillson  
 Dr. Frank Girard

Mrs. Frank Girard  
 Mrs. J. H. Glide  
 Mrs. Harry F. Gittings, Jr.  
 Miss Amelie Gier  
 Miss Lutie Goldstein  
 Mr. Jack Gomperts  
 Miss Lorraine C. Goodman  
 Mrs. James Graham  
 Mrs. Joseph D. Grant  
 Mrs. Spencer Grant  
 Mrs. Horace Gray  
 Mr. and Mrs. Stuart N. Greenberg  
 Mr. Emil Greenebaum  
 Mrs. Frederick L. Greenlee  
 Mrs. Gustav Gumpel  
 Mrs. Walter A. Haas  
 Mrs. Walter A. Haas, Jr.  
 Miss Ethel Hager  
 Mr. Marshall Hale  
 Mr. R. B. Hale  
 Mrs. Richard J. Hanna  
 Mrs. Robert D. Harden  
 Mrs. Charles L. Harney  
 Mrs. Russell Hastings  
 Mr. A. W. Hazen  
 Mrs. Richard Heimann  
 Mrs. E. S. Heller  
 Mr. Walter D. Heller  
 Mr. Walter S. Heller  
 Mrs. Frederick Hellman  
 Mrs. I. W. Hellman  
 Mrs. Wellington S. Henderson  
 Mrs. Alfred Hertz  
 Mrs. A. W. Hewlett  
 Mrs. Harold Hill  
 Mrs. Harry Hill  
 Mr. Stanley Hiller  
 Mr. and Mrs. Harry H. Hilp  
 Mrs. A. F. Hockenbeamer  
 Mrs. Clifford P. Hoffman  
 Mrs. Osgood Hooker  
 Mrs. Thomas Carr Howe, Jr.  
 Mrs. Thomas R. Hughes  
 Mrs. John Power Hutchins  
 Dr. S. Nicholas Jacobs  
 Mr. R. J. Jansen  
 Mr. Harold I. Johnson  
 Mr. Ivar Johnson  
 Mrs. Clarence Loran Johnson  
 Mrs. Henry J. Kaiser  
 Mr. Ben C. Keator



OUR SOCIAL HOSTESS WILL INTRODUCE YOU

**JEAN MERRICK**  
 703 Market St.  
 Suite 1302  
 YUkon 2923

A highly ethical introduction  
 bureau conducted in good  
 taste.  
 Telephone for appointment.

## RAY'S BEAUTY STUDIO

233 POST STREET  
 Mezzanine Floor  
 Sutter 8691

Featuring *BEAUTIFUL NATURAL COLD WAVES*

# The Zebra Room

ATOP NOB HILL  
COCKTAILS  
LUNCH ★ DINNER

A sophisticated atmosphere where meals  
are better and charm is added by



## HUNTINGTON HOTEL

1075 CALIFORNIA  
EUGENE N. FRITZ, Managing Owner

BY APPOINTMENT TO  
H. M. THE LATE KING OF PORTUGAL

## CORGO

### *Number One Cocktail*

Try it! Here's How: To a portion of iced Corgo Number One Fine Tawny Port add a twist of orange peel. Delightful taste treat.

Imported by WILLIAMS IMPORTERS. A Division  
of R. C. Williams & Co., Inc., 610 Fifth Ave., N. Y.

## OPERA GUILD MEMBERS—Continued

<p>Mr. Charles Kendrick Mrs. Henry S. Kiersted Mrs. J. R. Kleinjung Miss Caroline Korb Mrs. Abraham Koshland Mrs. Daniel Koshland Mrs. Marcus S. Koshland Mr. Frederick Koster Mr. Gus Kroesen Mrs. H. N. Kuechler, Jr. Miss Esther Kuenz Mrs. Albert George Lang Mrs. Philip V. H. Lansdale Mrs. Roger D. Lapham, Jr. Mrs. Roger D. Lapham Mrs. Thomas Larke, Jr. Mrs. Charles G. Lathrop Mrs. T. M. Lauridsen Mrs. Claude Lazard Mrs. Louis Lengfeld Mr. John A. Lesoine Mr. Albert Lester Mrs. Sidney Liebes Miss Frances Marie Lilienthal Mr. F. L. Lipman Miss Edith Livermore Mrs. Carl Livingston Mr. and Mrs. James K. Lochead Mrs. John Logan Mrs. Dan E. London Mr. James W. McAlister Mrs. Atholl McBean Mr. A. M. McCarty Mrs. W. H. McCormick Mrs. D. E. McLaughlin Mrs. George P. McNear Mrs. Thomas P. Mailliard Dr. Ergo A. Majors Mrs. Vivian Mann Mrs. Walter Martin Mrs. Charles Mayer Mrs. William G. Merchant Mrs. R. P. Merillion Mr. and Mrs. Gaetano Merola Mrs. H. C. Merritt, Jr. Mrs. John B. Metcalf Mr. C. O. G. Miller Mrs. Harry East Miller Pvt. Franklin Mittau Mr. Edward F. Moffatt Mr. J. K. Moffitt Mrs. Kenneth Monteagle</p>	<p>Mr. Kenneth Monteagle Mr. and Mrs. Paige Monteagle Mr. George Montgomery Mrs. James W. Morgan Dr. Grace McCann Morley Miss Alicia Mosgrove Miss Laura Musto Mrs. A. N. Nathan Miss Julia M. Neppert Mr. J. LeRoy Nickel, Jr. Miss Mary Obujen Mrs. Jack Okell Mr. Benjamin J. Older Mrs. Julius Oppenheimer Mrs. William H. Orrick Mrs. William Parrot Miss Barbara Parrott Mr. Charles R. Page Mr. Philip P. Paschel Mrs. Oscar Butler Perry Mrs. George A. Pope, Jr. Mrs. Kenneth Pope Mrs. Hugh B. Porter Mrs. M. C. Porter Mr. J. Sheldon Potter Mrs. Jerome V. Powell Mrs. Stanley Powell Mr. and Mrs. Stanley Powell Jr. Mr. Walter G. Preddy Mrs. John Raggio Dr. Ralph Arthur Reynolds Mrs. H. A. Richardson Miss Gertrude Richter Mrs. James W. Roberts Mrs. Arline Miller Rolkin Mr. Robert A. Roos Mrs. Charles W. Rosenbaum Mrs. Angela Wing Roth Mr. F. W. Rubke Mrs. Henry Potter Russell Miss Pauline E. Ryder Miss Virginia Ryder Mr. Marcus L. Samuels Mrs. Karl Schaefer Mr. and Mrs. Carl Schaubey Mrs. Rudolph Schilling Mr. George B. Schirmer Mr. Nat Schmulowitz Mr. Albert Schwabacher Mrs. Carrie Schwabacher Mrs. Louis A. Schwabacher Mrs. Bert C. Scott</p>	<p>Mr. H. S. Scott Mr. and Mrs. Bruce Selfridge Mrs. Richard H. Shainwald Mrs. R. S. Shainwald Mrs. Nelson Towne Shaw Mrs. A. H. Shearer Mrs. Fred R. Sherman Mrs. Francis Shook Mrs. Stauffer Sigall Mrs. Rose Silver Mr. Charles W. Slack Mrs. Leon Sloss, Jr. Mrs. Leon Sloss Mrs. Louis Sloss Judge and Mrs. M. C. Sloss Mrs. Josephine A. Smith Capt. G. W. Somers Mrs. Warren Spieker Mrs. Robert Gordon Sproul Mrs. E. B. Stanwood Mr. and Mrs. B. V. Sturdivant Mrs. John A. Sutro Mrs. Oscar Sutro, Jr. Mr. Louis Sutter Mrs. Alfred B. Swinerton Miss June Tanzer Mrs. F. F. Thomas, Jr. Mrs. Myron I. Thomas Mrs. Miller Thomlinson Miss Barbara B. Thompson Mrs. Joseph Tobin Mr. Ernest J. Torregano Mrs. Nion Tucker Mrs. John R. Upton Mrs. Sidney M. Van Wyck Mr. Paul Verdier Mrs. Daniel Volkmann Mrs. Norman Waggoner Mrs. Ward Walkup Mrs. Clarence R. Walter Mrs. John I. Walter Mrs. Lingan Warren Mrs. Helen B. White Mr. H. G. White Mrs. Millard C. White Mrs. Frederick C. Whitman Mr. Stephen Williams Mrs. Theodore Wores Mrs. Clarence Young Mrs. V. Zaruba Mrs. Harold L. Zellerbach Mr. Edgar T. Zook</p>
---	--	--

*An Instrument worthy of the Name*

"Beyond any shadow of a doubt, it surpasses anything I have heard in regard to tone quality, reliability, and appearance," says DAVID HALL, author of *The Record*

Book, monumental record-collector's reference book. Write for your copy of the unusual brochure: "How to Judge a High Quality Radio-Phonograph."

# Philharmonic

## RADIO-PHONOGRAPH



\*Trade Mark

Philharmonic Radio Corporation, Dept. 14, 528 East 72nd Street, New York

A TOUCH OF THE OLD WORLD



*Dinners at*

# VENETO

*are a gourmet's delight!*

Delicious salads... slow-simmered, rich soups and tender, succulent meats and vegetables

389 BAY AT MASON • GARFIELD 9711



*She is naturally proud  
of her beautiful things—*

... Because they reflect good taste,  
discrimination and are truly fine examples  
of traditional Sloane craftsmanship.

*W & J Sloane*  
SUTTER near GRANT



## CONTRIBUTORS TO 1944 SEASON

Amberg-Hirth	Gump's	V. C. Morris
Constant J. Auger	Hale Bros.	Musicians' Union, Local No. 6
Baldwin Piano Company	Hastings	National Broadcasting Co.
Blue Network Co., Inc.	Ernest Hirsch	O'Connor, Moffatt & Co.
Blum's	Hotel St. Francis	Palace Hotel
Borden's Dairy Delivery Co.	Joseph's Florists	Pisani Ptg. & Pub. Co.
Bullock & Jones	Carolyn Kelsey	Podesta & Baldocchi
Davis-Schonwasser	KJBS	Ransohoffs
City of Paris	K. H. Lengfeld	Roos Bros.
City Transfer & Storage Co.	H. Liebes & Company	Schneider Bros.
Columbia Concerts, Inc.	Livingston Bros.	Sherman, Clay & Company
The Emporium	Carl D. Lovotti	Shreve & Company
Julius Eppstein Florists	Mr. & Mrs. Grover A. Magnin	Sommer & Kaufmann
Fairmont Hotel	I. Magnin & Company	Standard Oil Company
Fox West Coast Theatres	Joseph Magnin	Weinstein & Company
Goldstein & Company	Maison Mendesselle	The White House
Granat Bros.	Mark Hopkins Hotel	Yellow Cab Company
	Merrill's Drug Center	

*In the Mural Room*

**AFTER THE OPERA**  
 ... still time for two  
 hours of dancing ...  
 to the music of  
**TED WEEMS**  
 and his orchestra  
 nightly except Monday  
 8:30 till 1 and Saturday  
 afternoon Tea Time

**MONDAY NIGHT**  
 and every evening  
 before 8:30 ... enjoy  
 the finest foods in  
 luxurious surroundings  
**NO COVER CHARGE**  
**NO CABARET TAX**  
 Concert Music

**Hotel St. Francis**  
 Don E. London - General Manager

### GIFTS *that say "I'm thinking of YOU"*

Orchid Ceramic Pins and Earrings ... Smocks for House and Victory Garden wear... "Good Luck Pixies"—the little figurines that really work wonders. 1000 suggestions.

### THE NATALIE SHOP

12 TILLMAN PLACE  
 Bet. Sutter & Post Sts.  
 Off Grant Avenue...  
 Phone: DOuglas 1502



THE  
**CLIFT**  
HOTEL

SAN FRANCISCO



*Home of the famous*  
**REDWOOD ROOM**

*Geary at Taylor*



Los Angeles' finest address. Garden  
swimming pool and tennis court.

**The Town House**  
LOS ANGELES

Visit

The

New

**POWELL'S**  
*Smart Apparel*

51 Grant Avenue

*A Smart Shop*  
*For Junior Sizes*

*The* **DRUNKARD**

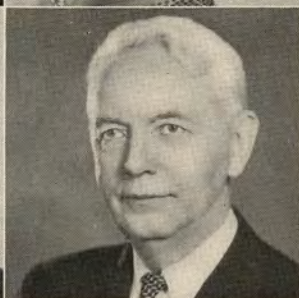
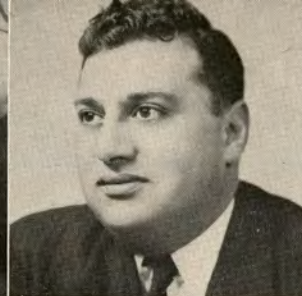
*3rd Year in San Francisco*

**DO NOT MISS THE BIGGEST  
LONG RUN SHOW OF  
THE CENTURY!**

**Will Close 29th**  
of this month

•  
*Don't be left out—make  
your reservations now!*

•  
OPERA BOX OFFICE, CITY OF PARIS  
or THEATRE, BUSH ST. MUSIC HALL,  
ORdway 1109



Reading from  
left to right

Goodwin  
De Lugg  
Vannucci  
Lorenzini  
Tallone  
Karpelenia  
Alibertini  
Levon  
Heitman  
Wellman

Markham  
Berton  
Guenter  
Bernhard  
Wahlin  
Schmidling  
Martin  
Jacobs  
Sanders  
Doan  
Gianopulos  
Nelson

ARTISTS OF  
*San Francisco*  
OPERA COMPANY  
☆

# SAN FRANCISCO OPERA GUILD MEMBERS

## Addenda

Miss Edith E. Allyne	Mrs. John Lindsay Hanna	Mr. George C. Thierbach
Miss Lucy H. Allyne	Mrs. L. W. Harris	Mrs. Edward Topham, Jr.
Mr. T. E. Ambrose	Mrs. Elystus Lyon Hayes	Mrs. James W. Towne
Miss Lillian Armsby	Mr. Benjamin H. Hicklin	Mr. Leslie R. Wilson
Mrs. Leonora Wood Armsby	Mrs. Fentress Hill	Mrs. Mary E. Wilson
Mrs. Edward F. Barron	Mr. John W. Hopkins	Miss Barbara Urba Winkler
Mr. Irving Bartel	Mrs. Thomas R. Hughes	Dr. Dorothy A. Wood
Mrs. Charles Beardsley	Mrs. Elizabeth Jongeneel	Mr. and Mrs. George
Mr. S. D. Bechtel	Mrs. T. Henshaw Kelly	Washington Baker, Jr.
Mrs. James Hall Bishop	Mrs. John B. Knox	Mr. and Mrs. R. I. Bentley, Jr.
Mr. and Mrs. Charles R. Blyth	Mrs. Lewis H. Lapham	Mrs. Walter H. Bentley
Mrs. T. J. Brennan	Miss Rena Lazelle	Dr. Walter H. Brown
Mrs. B. J. Brun	Mr. Felix A. Lenhart	Mrs. Edith DeLee
Mrs. Edward J. Buckley	Mr. Elvira LeStrange	Mr. Charles Flammer
Mrs. Arthur B. Cahill	Miss Louise Lovell	Mr. Angelo Fusco
Mrs. John R. Cahill	Mrs. Decker McAllister	Miss Jane Goodfellow
Mr. R. A. Cleaveland	Mrs. John McGaw	Mrs. D. H. Grubb
Mr. Newton Booth Coghill	Mr. and Mrs. Grover A. Magnin	Mrs. Robert Hotle
Mrs. B. Hardin Corbin	Mrs. Charles O. Martin	Mrs. Walter S. Johnson
Mrs. Emile F. Cuenin	Mrs. Howard Meadows	Mr. Percy L. King
Mrs. Cornelius J. Dall	Mrs. Julian J. Meyer	Mr. A. J. Kirkpatrick
Miss Florence Dean	Mrs. Earl D. Minton	Miss Frances Kosta
Mrs. Frank P. Deering	Mrs. Hans Nelson	Mrs. A. Lendle
Mrs. R. J. Dietrick	Mr. John Francis Neylan	Mrs. T. R. McCarron
Mrs. A. G. Dondero	Mrs. William H. Noble	Mrs. Randolph W. Martenot
Mr. Richard E. Doyle	Mrs. William H. Noble	Mrs. William H. Nolan
Miss Margaret L. Ely	Miss Anna C. O'Brien	Mrs. Ashton Potter
Miss Marian W. Ewes	Mrs. Warren Olney, Jr.	Mr. A. S. Russell
Mr. Lionel B. Feigenbaum	Mr. Aram Poladian	Miss Violet V. Schoning
Mr. and Mrs. W. Parmer Fuller, Jr.	Miss Eva Powell	Mr. Frederic R. Sherman
Nellie Gaffney	Mrs. Carl Raiss	Mrs. Henry J. Siegler
Miss Naida Gilmore	Mrs. William P. Roth	Mrs. Melville L. Smith
Mrs. Joseph Grace	Mr. James H. Schwabacher	Mrs. Lawrence Strassburger
Mrs. Horace Guittard	Mr. R. O. Simon	Mr. W. G. Thornton
Mrs. Randolph Hale	Mrs. Ralph J. L. Stern	Mrs. M. C. Threlkeld
Mrs. William L. Halfpenny	Mrs. Sigmund Stern	Dr. and Mrs. Harold Trimble
	Mr. and Mrs. Jerd Sullivan	

---

## THE SACRAMENTO MUSIC SERIES

CAROLYN E. WARE and MABEL HAZELTON, Directors

Presents

### THE SAN FRANCISCO OPERA COMPANY

IN

## *Three Saturday Nights of Grand Opera!*

**LA FORZA  
DEL DESTINO**

OCTOBER 7

**LAKME**

OCTOBER 14

**FAUST**

OCTOBER 21

---

**CITY TRANSFER CO.**

SERVES SAN FRANCISCO OPERA CO.

WHY NOT YOU?

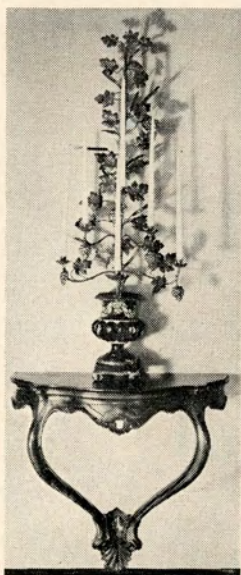
MOVING - STORAGE - SHIPPING  
333 TURK STREET Prospect 3060

**HANCOCK BROS.**

ROLL AND RESERVED SEAT TICKETS

25 JESSIE STREET ★ Douglas 2191  
San Francisco, 5, California

---



BUY WAR BONDS

★

*Fine Antiques*

★

*Excellent  
Craftsmanship*

★

K. H. LENGFELD

*Interior Decorator*

★

1409 SUTTER STREET, SAN FRANCISCO

BELFAST

★

*Manufactured  
by the makers  
of*  
BELFAST  
*Dry*  
GINGER ALE

*Famous  
Since 1877*

★



*Sparkling  
Water*

PURE, wholesome and delightful to the taste, Belfast Sparkling Water is the ideal table beverage...it is *supreme* among the better mixers — heightens the flavor of other beverages and gives longer-lasting sparkle in the glass.

BELFAST BEVERAGE CO.

820 Pacific Avenue

DOuglas 0547

San Francisco

**The 1944  
San Francisco  
Opera Season**

*is being broadcast by  
Safeway Stores*

OVER THE PACIFIC COAST DON LEE-MUTUAL NETWORK

So that you may better enjoy listening to the opera at home Safeway has produced an Opera Broadcast Program. Its 40 pages contain interesting stories of each opera, show pictures of leading artists, and list radio stations and broadcast time of each opera.

*You may obtain your free copy of the Safeway  
Broadcast Program in the foyer.*

# "In the eyes of the law"

Your Will, to you, may be a very personal matter, close to your heart.

But "in the eyes of the law" a Will is a formal, *legal document*, subject to strict legal interpretation.

Knowing this, a prudent man goes with his plans and purposes to his attorney so his Will can be drawn *in legal terms*; and thereafter reviews it periodically with his attorney to keep its provisions up to date.

By taking these simple precautions, he safeguards the interests of those he is most anxious to protect.

*An officer of our Trust Department will be glad to advise with you and your attorney.*

TRUST DEPARTMENT

**Wells Fargo**  
**Bank & UNION TRUST CO.**

SAN FRANCISCO • 20

Market at Montgomery • Market at Grant Ave.

*Established 1852*

Member F. D. I. C.





*Head and Shoulders*  
OVER OTHERS

**FOR MILDNESS... FOR BETTER TASTE**

*And as sure as night follows day... Chesterfield's definitely Milder Better Taste is the result of their...*

**RIGHT COMBINATION  
WORLD'S BEST TOBACCOS**

**Make these 5 Key-words the key to your Smoking Pleasure, as they are for millions everywhere.**

ASK FOR - **CHESTERFIELD**

SUNDAY MATINEE, OCTOBER 8, at 2:30

## MARTHA

Opera in four acts and six scenes. Music by Friedrich von Flotow.

Text by St. George and Friedrich

### THE CAST

Lady Harriet, maid of honor to Queen Anne.....	LICIA ALBANESE
Nancy, her confidante.....	HERTA GLAZ
Plunkett, a wealthy farmer.....	LORENZO ALVARY
Lionel, his foster-brother, later Earl of Derby.....	BRUNO LANDI
Sir Tristan, Lady Harriet's cousin.....	SALVATORE BACCALONI
The Sheriff of Richmond.....	CHARLES GOODWIN
First Maid.....	GEORGIA GIANOPULOS
Second Maid.....	KATHLEEN LAWLOR
Third Maid.....	NEVART LEVON
Farmer.....	BENJAMIN MARTIN
Woman Farmer.....	LEILA GAMBI
Lackeys.....	{ FRED WAHLIN, PAUL GUENTER PHILIP DOAN, ALBERT VANNUCCI

*Ladies, Servants, Farmers, Hunters, Huntresses, Pages.*

Corps de Ballet

**STAGE DIRECTOR**  
ARMANDO AGNINI

**CONDUCTOR**  
KARL RIEDEL

**CHORUS DIRECTOR**  
KURT HERBERT ADLER

**TIME AND PLACE:** About 1840; Rural England

Act I: Scene 1: Boudoir of Lady Harriet

Scene 2: The Fair at Richmond

Act II: Room in Plunkett's Farmhouse

Act III: Hunting Park in Richmond Forest

Act IV: Scene 1: Same as Act 2

Scene 2: Replica of Act I, Scene 2

---

SEATS FOR ALL REMAINING PERFORMANCES ARE  
AVAILABLE AT OPERA BOX OFFICE, CITY OF PARIS

---

*Encores not permitted — Bell rings three minutes before curtain rises*