

Falstaff

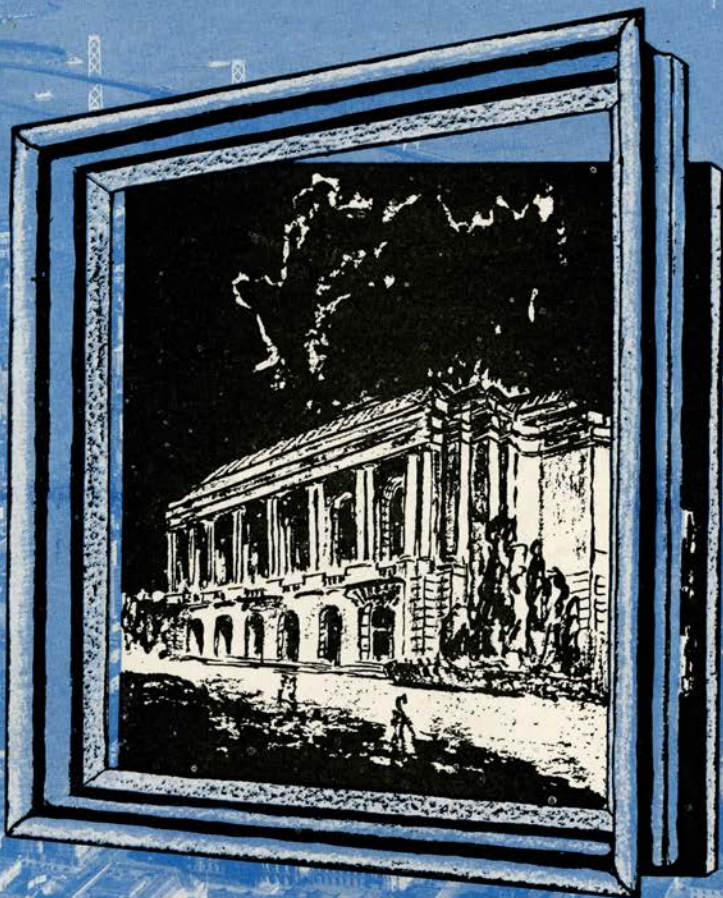
1944

Monday, October 16, 1944 8:00 PM
Thursday, October 26, 1944 8:00 PM

SFO_PUB_01_SFO_1944_06

Publications Collection

San Francisco Opera Archives



Twenty-second Annual Season

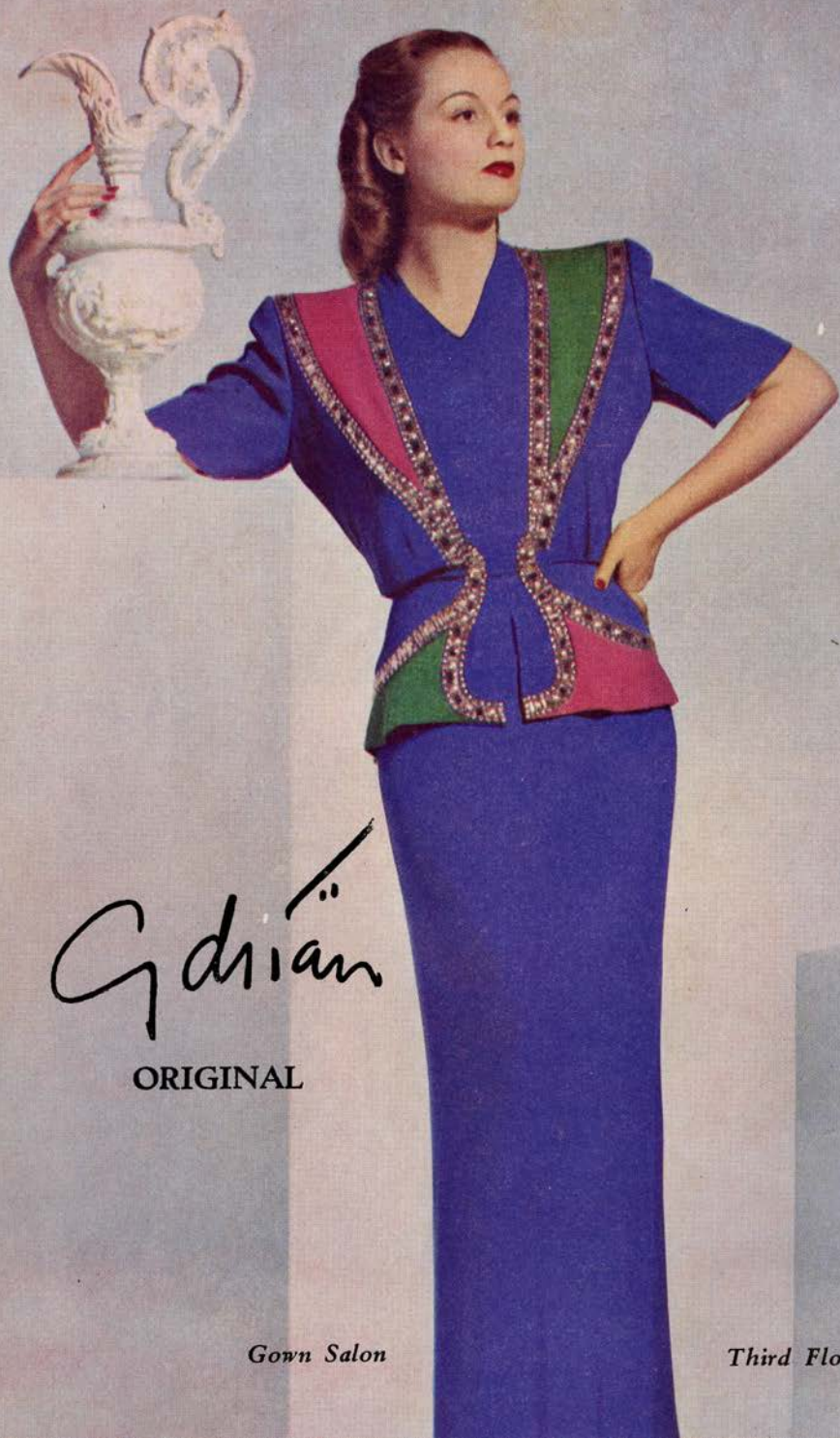
SAN FRANCISCO OPERA ASSOCIATION

GAETANO MEROLA, *General Director*

WAR MEMORIAL OPERA HOUSE

SEPTEMBER 29 TO OCTOBER 28, 1944

City Paris
DOUGLAS 4500 UNION SQUARE

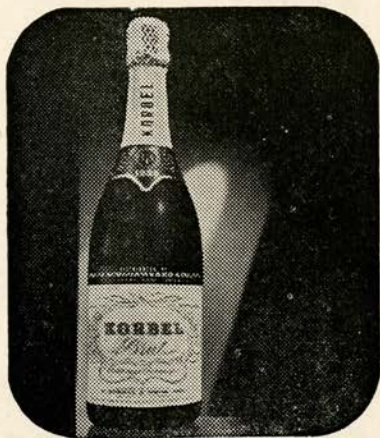


G. d. s. i. a. n.

ORIGINAL

Gown Salon

Third Floor



It Stands Alone

KORBEL BRUT IS **TOPS** IN AMERICAN CHAMPAGNE

Magazines which reach the most sophisticated audience in the United States unanimously give first place in American Champagnes to KORBEL BRUT
WE didn't say it first! THEY DID!

"THE BEST AMERICAN CHAMPAGNE to date is KORBEL BRUT 1933. Our guess is anyone would think it was imported." —Harper's Bazaar, February, 1941.

"PROBABLY THE MOST CHAMPAGNE-LIKE domestic wine is KORBEL BRUT 1933." —Cue Magazine, December 28, 1940.

"THE OUTSTANDING AMERICAN CHAMPAGNE to date is KORBEL BRUT 1933." —Town and Country, February, 1941.

"EXTREMELY ENJOYABLE, bone-dry and clean-tasting." —The New Yorker, March 15, 1941.

"AMONG THE FEW FINE CALIFORNIA CHAMPAGNES IS KORBEL BRUT, vintage 1933—a special cuvee which has been made as dry as the dryest Champagnes for the English market." —St. Regis, Peacock Alley, The Ambassador, Plaza En Passant, The Savoyard, The Ritz Carlton, The Hampshire, The Sherry-Netherlands, Pierrot, January, 1941.

K O R B E L B R U T

Distributed by

TRADERS DISTRIBUTING CO.
314 FRONT STREET, SAN FRANCISCO, CALIFORNIA

QUALITY

Style . . . and a reputation
in the making of smart
Men's Clothing . . .

WILLIAMS AND BERG CO.

GENERAL ENGLISH TAILORS

110 SUTTER STREET FRENCH AMERICAN BANK BUILDING



KFRC

Broadcasting

The

SAN FRANCISCO OPERA SERIES

Evening performances — 10 p. m.

Sept. 29 • Oct. 5, 6, 11, 13, 17, 18, 20, 26, 27, 28

Sunday afternoons — 4 p. m. • Oct. 1, 8, 22

MUTUAL-DON LEE

610 ON YOUR DIAL

R

ECORDS of all the music you want at Sherman, Clay's many Pacific Coast music stores. Records of operas and operatic selections, of symphonies, of artists of today and yesterday. Records of dance bands sweet and hot, mood music of every kind. Records for the young set, for the sophisticates, for music lovers. for sentimentalists. Records for children, for students . . records of every character and description here for you at Sherman, Clay & Co.



Sherman  Clay

8 PACIFIC COAST STORES SAN FRANCISCO OAKLAND
SACRAMENTO SAN JOSE • FRESNO PORTLAND SEATTLE

Pedro Domecq wears a White Tie

No formal dinner party would be right without white ties and formal gowns. Nor would it be quite correct without wine—a glass of fine Amontillado, Domecq's Selecto, with the soup, a table wine with the entree, and a mellow, golden cream Sherry, Domecq's Celebration Cream, with the dessert.

Ask your dealer to show you Pedro Domecq's range of Sherries. Your cellar without a noble Sherry like Domecq would be as incomplete as your wardrobe without evening clothes.

COMEX WINE & SPIRITS, INC.

New York City

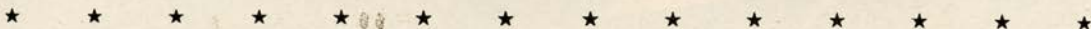
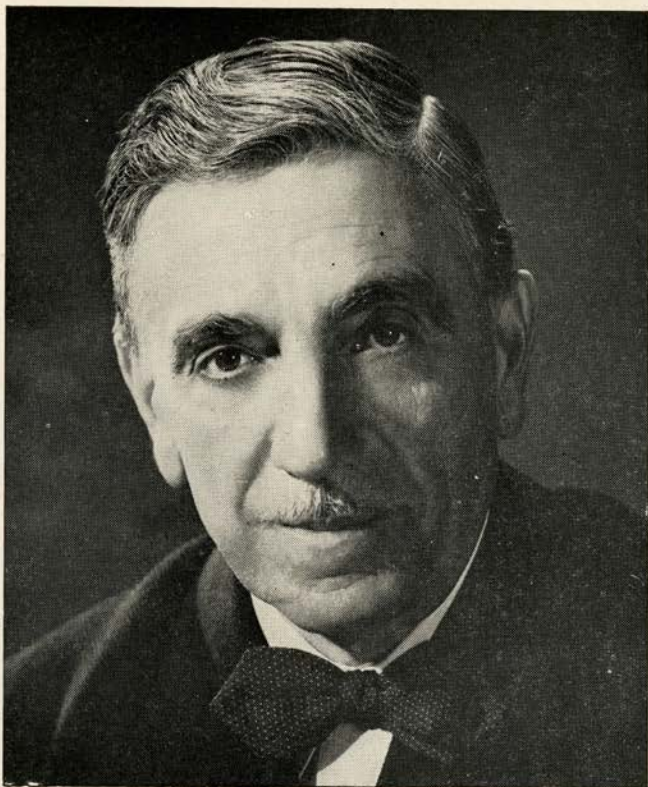
San Francisco

Bottled in Jerez, Spain. Alcohol 18 to 20% by volume



COCKTAIL BAR IN BASEMENT PROMENADE
SERVICE ALSO ON DRESS CIRCLE AND MEZZANINE

Served at the Opera House BUFFET



GAETANO MEROLA

GENERAL DIRECTOR

This is the San Francisco Opera Company's 22nd Annual Season, its third war time season, and it is fitting that its friends pause a moment to take stock of the past and the present.

We can well be proud of twenty-two unbroken years of opera. On October 15, 1932, the War Memorial Opera House was dedicated by the opening performance of the 10th Season.

In the fall of 1941, the San Francisco Opera Company's annual tours to Sacramento, Los Angeles and Pasadena were extended to include Portland and Seattle.

It is estimated that since the inception of the San Francisco Opera Company twenty-two years ago, approximately 3,000,000 persons have attended its performances.

This season, notwithstanding war time conditions, the Opera Association will achieve its long sought desire to be truly the source of grand opera enjoyment of the entire west, through the broadcast of fourteen performances over thirty-eight stations of the Don Lee Mutual Broadcasting System.

We are grateful to Safeway Stores, the sponsor of these broadcasts, and we are sure that millions of listeners will join us in this formal expression of appreciation.

SAN FRANCISCO OPERA ASSOCIATION



AS SEEN IN

Vogue

FOREVER YOURS...the matchless beauty and distinction of your
Granat Perfect Blue-White Solitaire Diamond, with its handmade
Tempered Mounting,*as seen In VOGUE. Choose from a nationally
renowned collection of these exclusive creations...\$100 to \$1,000
and more...at America's Largest Manufacturing Retail Jewelers.

★ TRADE MARK OF GRANAT BROS

Granat Bros
SHREVE TREAT & EACRET

O F F I C E R S



★ ★ ★ ★ ★ ★ ★ ★ ★ ★ ★ ★ ★ ★ ★ ★
KENNETH MONTEAGLE
PRESIDENT

MRS. STANLEY POWELL
VICE-PRESIDENT

ARTHUR MERRILL BROWN, JR.
VICE-PRESIDENT

CHARLES R. BLYTH
VICE-PRESIDENT

GEORGE T. CAMERON
TREASURER

EDWARD F. MOFFATT
SECRETARY

BOARD OF DIRECTORS

GEORGE WASHINGTON BAKER, JR.
CHARLES R. BLYTH
ARTHUR MERRILL BROWN, JR.
GEORGE T. CAMERON
WILLIAM W. CROCKER
MORTIMER FLEISHHACKER

TIMOTHY HEALY
KENNETH MONTEAGLE
JOHN FRANCIS NEYLAN
MRS. STANLEY POWELL
MRS. HENRY POTTER RUSSELL
NIDN R. TUCKER


EXECUTIVE STAFF

PAUL POSZ
BUSINESS MANAGER

HOWARD G. HANVEY - CURRAN SWINT
PUBLICITY

ARTHUR FRAHM-LALIA DECKER-PHYLLIS AMATI
TICKET SALES

EVELYN CROCKETT-GERALD G. ROSS
OFFICE SECRETARIES



Willat **COLD PERMANENT WAVE**

HEATLESS PERMANENT WAVE • 1122 FOLSOM ST., SAN FRANCISCO 3, CALIF.

Chic... is the word for it.
a willat cold permanent wave

Discriminating San Francisco women know that a Willat Cold Permanent Wave will help their hair to look its very smartest on First Nights at Theatre and Opera. Enjoy this cold permanent wave the next time you visit your favorite beauty salon and have a complimentary test curl to show you just how lovely your hair will look with a Willat Cold Permanent Wave.

FOR SOFT, LOVELY CURLS TRY A WILLAT WANDA WAVE. TRULY A MIRACLE WAVE...SO LOVELY, SIMPLE AND QUICK. WILLAT CIRCLETTE WAVE. THE DELUXE WAVE THAT'S SPRAYED INTO YOUR HAIR.

BOARD OF GOVERNORS

GEORGE WASHINGTON BAKER, JR.	REUBEN B. HALE	MRS. JOHN FRANCIS NEYLAN
P. A. BERGEROT	MRS. LAWRENCE W. HARRIS	JOHN FRANCIS NEYLAN
CHARLES R. BLYTH	J. EMMET HAYDEN	ETTORE PATRIZI
J. BRENDAN BRADY	TIMOTHY HEALY	RALPH L. PHELPS
H. SEWALL BRADLEY	EDWARD D. KEIL	MRS. M. C. PORTER
ARTHUR MERRILL BROWN, JR.	CHARLES H. KENDRICK	MRS. STANLEY POWELL
GUIDO CAGLIERI	MRS. MARCUS S. KOSHLAND	STANLEY POWELL
MRS. GEORGE T. CAMERON	LEWIS A. LAPHAM	ANGELO J. ROSSI
GEORGE T. CAMERON	MRS. STINE LEIS	MRS. HENRY POTTER RUSSELL
CHARLES A. CHRISTIN	J. B. LEVISON	A. SBARBORD
TEMPLETON CROCKER	MISS EDITH LIVERMORE	FRED R. SHERMAN
WILLIAM W. CROCKER	M. E. LOMBARDI	PAUL SHOUP
GEORGE E. CROTHERS	MISS RUTH W. LORING	MRS. M. C. SLOSS
MRS. FRANK P. DEERING	MISS SALLIE MAYNARD	RALPH J. A. STERN
MISS MARY C. DUNHAM	WILLIAM GLADSTONE MERCHANT	MRS. SIGMUND STERN
SIDNEY M. EHRMAN	MRS. C. D. G. MILLER	MRS. DAVID ARMSTRONG TAYLOR
MRS. WILLIAM M. FITZHUGH	ROBERT W. MILLER	M. C. THRELKELD
MORTIMER FLEISHHACKER	EDWARD F. MOFFATT	NIDN R. TUCKER
A. P. GIANNINI	KENNETH MONTEAGLE	RANDOLPH C. WALKER
RANDOLPH HALE	GUIDO MUSTO	WHITNEY WARREN, JR.



WAR MEMORIAL OPERA HOUSE

(OWNED AND OPERATED BY THE CITY AND COUNTY OF SAN FRANCISCO
THROUGH THE BOARD OF TRUSTEES OF THE WAR MEMORIAL)

BOARD OF TRUSTEES

GUIDO J. MUSTO PRESIDENT	CHARLES G. KLEUPFER VICE-PRESIDENT	WALTER A. LEONETTI
SIDNEY M. EHRMAN	DAN S. HEWITT	FELIX S. MCGINNIS
ALVIN GERLACK	J. BRUCE JONES	HARRY A. MILTON
WILBUR A. HENDERSON		RALPH J. A. STERN
EDWARD SHARKEY MANAGING DIRECTOR OF THE WAR MEMORIAL		IRA G. THOMPSON SECRETARY TO THE BOARD OF TRUSTEES

Buffet Service in Basement Promenade and Dress Circle during all performances

LIBRETTOS AND OPERA GLASSES IN FOYER • HEAD SETS FOR THE DEAF ARE
AVAILABLE AT TABLE IN MAIN FOYER • ATTENDANT WILL CONNECT
WITH SEAT LOCATION UPON REQUEST • FOR LOST AND FOUND
INFORMATION, INQUIRE AT CHECK ROOM NO. 1
WILLIAM A. MEADE, DIRECTOR OF HOUSE SERVICE



AIR RAID PRECAUTIONS

The Opera House is "blacked out" and all facilities have been inspected and approved by Civilian Defense authorities. As an additional factor for your safety, trained Air Raid Wardens are on duty during performances
PLEASE OBEY ALL INSTRUCTIONS OF THE AIR RAID WARDENS

Rent
Exercycle
Electrically Operated
Relaxing Exercise

CALL
EXERCYCLE CO.
455 POWELL STREET
SAN FRANCISCO
YUkon 1456



SAN FRANCISCO OPERA COMPANY

GAETANO MEROLA
GENERAL DIRECTOR

ARMANDO AGNINI
STAGE AND TECHNICAL DIRECTOR

KURT HERBERT ADLER
CHORUS DIRECTOR

JESSIE KEENE
PRODUCTION SECRETARY

ETIENNE BARONE
ASSISTANT STAGE DIRECTOR

WILLIAM CHRISTENSEN
BALLET MASTER

☆

CONDUCTORS and ASSISTANTS

GAETANO MEROLA
PIETRO CIMARA
NAOUM BLINDER
CONCERT MASTER

WILLIAM STEINBERG
KARL RIEDEL
OTELLO CIRONI
ANTONIO DELL'OREFICE

GEORGE SEBASTIAN
KURT HERBERT ADLER
JULIUS HAUG
LIBRARIAN

ARTISTS

LICIA ALBANESE
SOPRANO

EVARISTO ALIBERTINI
BARITONE

LORENZO ALVARY
BASS

ALICE AVAKIAN
CONTRALTO

SALVATORE BACCALONI
BASS

ALTON BERNHARD
TENOR

ANTHONY BERTON
TENOR

LELIA CAMBI
SOPRANO

GEORGE CEHANOVSKY
BARITONE

VIVIAN DELLA CHIESA
SOPRANO

HARRY DE LUGG
TENOR

ALESSIO DE PAOLIS
TENOR

LILY DJANEL
SOPRANO

PHILIP DOAN
TENOR

JOHN GARRIS
TENOR

GEORGIA GIANOPULOS
SOPRANO

HERTA GLAZ
CONTRALTO

CHARLES GOODWIN
BASS

PAUL GUENTER
BARITONE

MARGARET HARSHAW
CONTRALTO

ELMA HEITMAN
SOPRANO

MARY BELLE JACOBS
SOPRANO

FREDERICK JAGEL
TENOR

RAOUL JOBIN
TENOR

HELENE KARPELENIA
SOPRANO

CHARLES KULLMAN
TENOR

BRUNO LANDI
TENOR

KATHLEEN LAWLOR
SOPRANO

NEVART LEVON
SOPRANO

MAX LORENZINI
BARITONE

VIRGINIA MACWATTERS
SOPRANO

MARY HELEN MARKHAM
SOPRANO

BENJAMIN MARTIN
BARITONE

ROBIN NELSON
BARITONE

JAN PEECE
TENOR

IVAN PETROFF
BARITONE

EZIO PINZA
BASS

LILY PONS
SOPRANO

STELLA ROMAN
SOPRANO

W. VERNON SANDERS
BASS

ALLEN SCHMIDLING
TENOR

JOHN SHAFER
BARITONE

ROBERTO SILVA
BASS

RISE STEVENS
SOPRANO

GEORGE TALLONE
TENOR

HUGH THOMPSON
BARITONE

JOSEPH TISSIER
TENOR

CLARAMAE TURNER
CONTRALTO

FRANCESCO VALENTINO
BARITONE

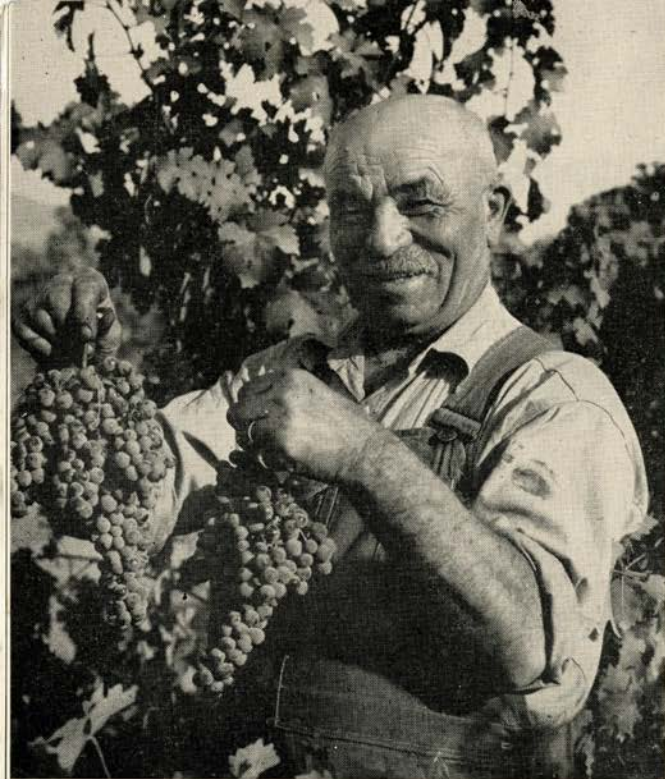
ALBERT VANNUCCI
TENOR

THELMA VOTIPKA
SOPRANO

FRED WAHLIN
BASS

LEONARD WARREN
BARITONE

EDWARD WELLMAN
BARITONE



Pierre, Foreman of Beaulieu Vineyard Number Two.

In the heart of Napa Valley, where soil and climate are congenial for the wine grape, the tradition of fine wine-making is being kept alive by the skill of Beaulieu vintners. Grapes of the finest, light-bearing varieties, allowed to develop in small casks and in the bottle, yield their delicate flavor to the fine wines of Beaulieu Vineyard. You will experience the same pride in serving them at your table, as the Beaulieu vintners take in making them.



Quality not Quantity

IS THE DISTINGUISHING MARK OF

Beaulieu Vineyard

BV

Beaulieu Vineyard

Vineyards and Winery: Rutherford, Napa Co., Calif.

Offices: 300 Montgomery St., San Francisco 4, Calif.

Since 1900

Pay for your American Citizenship • Buy War Bonds



PONS



JOBIN



ALBANESE



PINZA



ROMAN



KULLMAN



STEVENS
LANDI



PEERCE
GLAZ



DELLA CHIESA



☆
ARTISTS OF
San Francisco
OPERA COMPANY
 ☆

San Francisco Tradition

BEFORE THE OPERA
... Dine in the exquisite Garden Court

AFTER THE OPERA
... Dance in the Rose Room to the music of

JAN SAVITT
and his orchestra

The
PALACE HOTEL
EDMOND A RIEDER, General Manager



This is one way to make clothes last
a long time.

A more practical method is to buy
things made of Bemberg* rayon.

*BEMBERG is the registered trade-mark of AMERICAN BEMBERG CORPORATION



WARREN



DJANEL



JABEL



BACCALONI



HARSHAW



VALENTINO



SILVA
PETROFF



GEHANDOVSKY
MACWATTERS



ALVARY



☆
ARTISTS OF
San Francisco
OPERA COMPANY
 ☆



A Tone Poem



*in
Light and Shadow*

*A portrait study
by*

Nicholas Johnston

Miss Ruby Asquith, Ballerina . . . S. F. Ballet Company

427 Post Street
(In the St. Francis Hotel)
YU kon 2061

Nicholas Johnston

MASTER PHOTOGRAPHER

CHORAL ENSEMBLE

MISSES		MESSRS.	
VIOLET AURAND	MARY BELLE JACOBS	EVARISTO ALIBERTINI	MAX LORENZINI
VIRGINIA BELLINGER	HELENE KARPELENIA	ALBERT BARRETT	AUGUST LOURENZO
BIANCA BRUNI	LUCILLE KIRTLEY	ALTON BERNHARD	ALLAN LOUW
LORRAINE CALCAGNO	KATHLEEN LAWLOR	ANTHONY BERTON	GIULIO MANCINI
LELIA CAMBI	NEVART LEVON	LOUIS BRAUNSTEIN	BENJAMIN MARTIN
ELIZABETH CASE	DOROTHY MCINTYRE	SEBASTIAN CAMPAGNA	CARLO MANNUCCI
ELEANOR CORYELL	MARY HELEN MARKHAM	GALLIANO DANELUZ	ROBIN NELSON
SEDA DER GARABEDIAN	DELPHIA PHILLIPS	KENNETH DAVIES	LLOYD PEASE
BARBARA FRITZ	MARY RHETT	FLOYD DAVIS	WILLIAM PETERSON
GEORGIA GIANDPULOS	ELIZABETH JANE SANDERSON	LORENZO DE BEAL	W. VERNON SANDERS
DALE GOODWIN		AMERIGO DEL GRANDI	ALLEN SCHMIDLING
ELMA HEITMAN	MARY LEE SMITH	HARRY DE LUGG	BRUCE STEWART
ROSE AGNES HERSCH	VERA SOLAX	ARTHUR DE MASI	GEORGE TALLONE
ORTHELLA HUGHES	CLARAMAE TURNER	PHILIP DOAN	ALBERT VANNUCCI
		WILLIAM GORMAN	EDWIN VANNUCCI
		PAUL GUENTER	FRED WAHLIN
			EDWARD WELLMAN
DORA DE TANO, ACCOMPANIST			

BALLET

RUBY ASQUITH, PREMIER DANSEUSE

EARL RIGGINS, PREMIER DANSEUR

SOLOISTS

PRINCIPAL DANCERS

MISSES	MISSES	MISSES	MESSRS.
CELENA CUMMINGS	LOIS TREADWELL	HOPE LINTZ	JOAQUIN FELCH
MATTLYN GEVURTZ	JOCELYN VOLLMAR	JYMMI RIEDEL	ROBERT HANSEN
ROSALIE PROSCH	ONNA WHITE	PEGGY SWIFT	RUSSELL HARTLEY
		WANA WILLIAMS	FRANK NELSON
		KATHERINE BEATTIE	ROBERT THORSON
		GINA CHAPPELL	

CORPS DE BALLET

MISSES	MISSES	MISSES	MISSES
GENEVIEVE ASONOVITCH	VERA GOLD	JACKIE LA FETRA	EDWINA NOBLE
BARBARA BADERTSCHER	ANTOINETTE GUHLKE	SALLY WHALEN	VIRGINIA POOLE
BONNIE BELL	HELENA HENDERSON	JUNE WILSON	JOAN VICKERS
JOAN BENNET	NANCY JACOBSON	FIALA MRAZ	

PRODUCTION

JULIAN DOVE[†]—FRITZ KRAENKE
Scenic Artists

EARL MCGUIRE
Master Carpenter

CHARLES J. HOLZMUELLER
Master Electrician

JOHN T. HEAVEY
Master of Properties

FOR WAR MEMORIAL OPERA HOUSE

S. E. SIMMONS
Master Carpenter

EDWARD J. ZETTEL
Master Electrician

CLAUDE L. WAGGONER
Master of Properties

COSTUMES AND WIGS BY GOLDSTEIN & CO.

ALEXANDER AGNINI
Wardrobe Master

INEZ DODSON
Wardrobe Mistress

SUE MCGOWAN
Hairdresser

EVERETT MASON
Chief of Makeup

PROGRAM

PISANI PRINTING & PUBLISHING COMPANY, PUBLISHERS, DESIGNERS AND PRINTERS

ACME
..the beer with the
high I.Q. *(It Quenches!)*



ACME BREWERIES San Francisco • Los Angeles

Repertoire

REGULAR SERIES

- AIDA (*Verdi*) Friday Night, September 29, at 8:00
 With Roman, Harshaw, Jagel, Warren, Pinza, Alvary, De Paolis, Votipka.
 MEROLA, Conductor
- MARTHA (*von Flotow*) Tuesday Night, October 3, at 8:15
 With Albanese, Glaz, Landi, Alvary, Baccaloni, Goodwin, Lawlor, Gianopoulos, Levon,
 Cambi, Martin, Wahlin, Guenter, Doan, A. Vannucci. MEROLA, Conductor
- LAKME (*Delibes*) Friday Night, October 6, at 8:30
 With Pons, Jobin, Cehanovsky, Silva, Glaz, Votipka, Karpelenia, Avakian, Garris, Martin,
 De Lugg, Tallone. CIMARA, Conductor
- MANON (*Massenet*) Tuesday Night, October 10, at 8:30
 With Albanese, Kullman, Valentino, Alvary, De Paolis, Cehanovsky, Levon, Bernhard,
 Wellman. CIMARA, Conductor
- THE SECRET OF SUZANNE (*Wolf-Ferrari*) Friday Night, October 13, at 8:30
 With MacWatters, Thompson, De Paolis. ADLER, Conductor
followed by
- SALOME (*Richard Strauss*)
 with Djanel, Jagel, Harshaw, Shafer, Glaz, Garris, Alvary, De Paolis, Cehanovsky, Tis-
 sier, Nelson, Wellman, Goodwin, Schmidling, Berton, Heitman. SEBASTIAN, Conductor
- FALSTAFF (*Verdi*) Monday Night, October 16, at 8:00
 With Baccaloni, Landi, Petroff, Della Chiesa, Albanese, Harshaw, Glaz, Garris, De Paolis,
 Alvary, Lawlor. STEINBERG, Conductor
- FAUST (*Gounod*) Wednesday Night, October 18, at 8:00
 With Jobin, Pinza, Della Chiesa, Warren, Glaz, Votipka, Cehanovsky.
 STEINBERG, Conductor
- THE MASKED BALL (*Verdi*) Friday Night, October 20, at 8:00
 With Roman, Peerce, Warren, Harshaw, MacWatters, Alvary, Silva, Cehanovsky, Tallone,
 Lorenzini. STEINBERG, Conductor
- LES CONTES D'HOFFMAN (*Offenbach*) Tuesday Night, October 24, at 8:15
 With Jobin, Glaz, MacWatters, Djanel, Albanese, Pinza, Valentino, Cehanovsky, Alvary,
 Turner, De Paolis, Tissier, Garris, Goodwin, Wellman, Sanders. MEROLA, Conductor
- CARMEN (*Bizet*) Friday Night, October 27, at 8:00
 With Stevens, Kullman, MacWatters, Valentino, Alvary, Votipka, Avakian, Cehanovsky,
 De Paolis. SEBASTIAN, Conductor

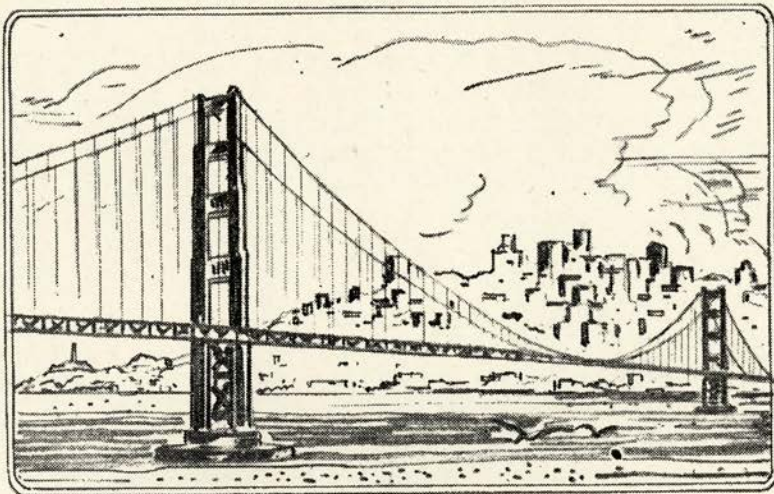
POPULAR SERIES

- LA BOHEME (*Puccini*) Thursday Night, October 5, at 8:30
 With Albanese, MacWatters, Kullman, Valentino, Pinza, Cehanovsky, Baccaloni, Alibertini,
 Lorenzini, Jacobs. MEROLA, Conductor
- LUCIA DI LAMMERMOOR (*Donizetti*) Wednesday Night, October 11, at 8:15
 With Pons, Peerce, Alvary, Petroff, Votipka, Garris, Tissier. CIMARA, Conductor
- AIDA (*Verdi*) Sunday Afternoon, October 15, at 2:15
 With same cast as in the Regular Series performance.
- THE SECRET OF SUZANNE (*Wolf-Ferrari*) Thursday Night, October 19, at 8:30
 With same cast as in the Regular Series performance.
followed by
- SALOME (*Richard Strauss*)
 With same cast as in the Regular Series performance.
- FALSTAFF (*Verdi*) Thursday Night, October 26, at 8:00
 With same cast as in the Regular Series performance.

EXTRA PERFORMANCES

- LA FORZA DEL DESTINO (*Verdi*) Sunday Afternoon, October 1, at 2:15
 With Roman, Jagel, Warren, Pinza, Baccaloni, Glaz, Votipka, Alvary, De Paolis, Cehanovsky.
 MEROLA, Conductor
- MARTHA (*von Flotow*) Sunday Afternoon, October 8, at 2:30
 With same cast as in the Regular Series performance. RIEDEL, Conductor
- RIGOLETTO (*Verdi*) Tuesday Night, October 17, at 8:15
 With Warren, Pons, Peerce, Silva, Glaz, Cehanovsky, Nelson, Wellman, De Paolis, Votipka,
 Markham, Lawlor. CIMARA, Conductor
- MANON (*Massenet*) Sunday Afternoon, October 22, at 2:30
 With same cast as in the Regular Series performance.
- LES CONTES D'HOFFMANN (*Offenbach*) Saturday Night, October 28, at 8:15
 With same cast as in the Regular Series performance.

THE EXTRA PERFORMANCES OF "MANON" AND "RIGOLETTO" ARE OPERA ASSOCIATION
 CONCERT ATTRACTIONS



THE METROPOLIS
of the
FUTURE

War-time activities keep the Port of San Francisco alive and humming today.

Let us all cooperate to keep the San Francisco Bay Area the industrial center of the West after the war.



THE SAN FRANCISCO BANK

SAVINGS *Incorporated Feb. 10, 1868* TRUST

Member Federal Deposit Insurance Corporation

SEVEN OFFICES . . . EACH A COMPLETE BANK

PARKER S. MADDUX, *President*

THE CONCERT DIVISION OF THE
SAN FRANCISCO OPERA ASSOCIATION

GAETANO MEROLA, *General Director*

PAUL POSZ, *Business Manager*

Announces

THE TWO ALL-STAR OPERA HOUSE SERIES



8 — Evening Events — 8

RIGOLETTO	- - - - -	Oct. 17
BALLET RUSSE de MONTE CARLO	- - - - -	Nov. 21
ZINO FRANCESCATTI	- - - - -	Jan. 22
BIDU SAYAO	- - - - -	Feb. 21
DRAPER and ADLER	- - - - -	Mar. 5
JAMES MELTON	- - - - -	Mar. 23
RISE STEVENS	- - - - -	Apr. 17
ANOTHER EVENT TO BE ANNOUNCED		



8 — Sunday Matinee Events — 8

MANON	- - - - -	Oct. 22
DON COSSACKS (Gen. Platoff)	- - - - -	Nov. 19
BALLET RUSSE de MONTE CARLO	- - - - -	Nov. 26
ROBERT CASADESUS	- - - - -	Dec. 3
ADOLF BUSCH and his Little Symphony	- - - - -	Feb. 25
DOROTHY MAYNOR	- - - - -	Mar. 4
LAWRENCE TIBBETT	- - - - - (Date not announced)	
ANOTHER EVENT TO BE ANNOUNCED		

•

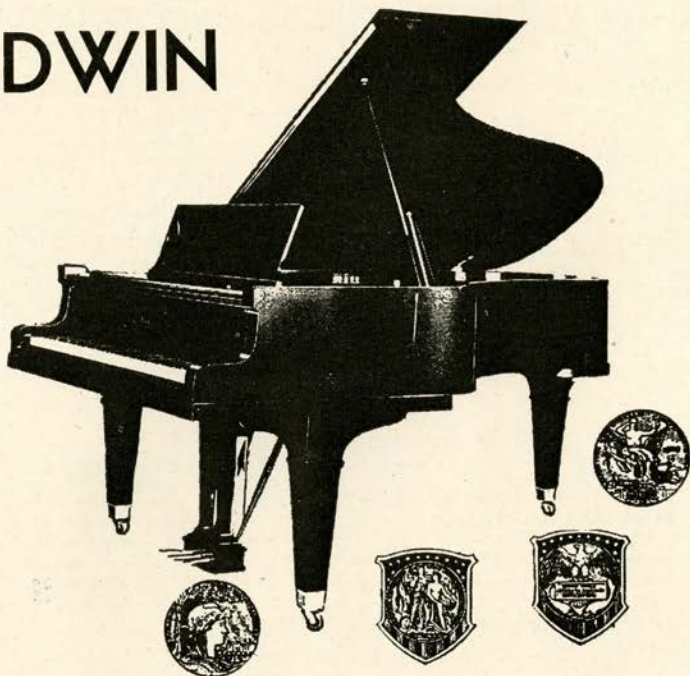
WAR MEMORIAL OPERA HOUSE

Tickets on sale at Opera Box Office, Normandy Lane, City of Paris — EX. 8585

Order Your Season Tickets Now, While Choice Seats Are Available

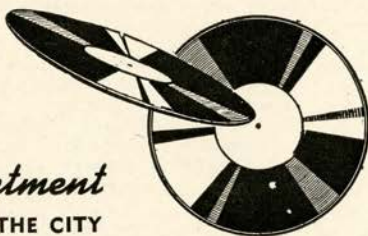
THE OFFICIAL PIANO *of the*
SAN FRANCISCO OPERA COMPANY

BALDWIN



Choose your Piano as the Artists Do

VISIT OUR *Record Department*
ONLY GROUND FLOOR RECORD DEPT. IN THE CITY



THE BALDWIN PIANO CO.

310 SUTTER STREET, SAN FRANCISCO
1828 WEBSTER STREET, OAKLAND

MUSICAL ASSOCIATION OF SAN FRANCISCO

presents

**SAN FRANCISCO
SYMPHONY ORCHESTRA**

PIERRE MONTEUX, *Conductor*

LEONORA WOOD ARMSBY
President and Managing Director

HOWARD K. SKINNER
Business Manager

Thirty-third Season — Dec. 1 to April 14

FOUR SERIES

EIGHT FRIDAY AFTERNOONS at 2:15

FOUR THURSDAY EVENINGS at 8:30

TWELVE SATURDAY EVENINGS at 8:30
(Repeats of Friday Afternoon and Thursday Evening Concerts)

BRAHMS FESTIVAL — 3 EVENINGS at 8:30

GUEST ARTISTS

Pianists

ARTUR SCHNABEL • ANIA DORFMANN • ARTUR RUBINSTEIN
WITOLD MALCUZYNSKI • LEONARD PENNARIO

Violinists

ERICA MORINI • HEIFETZ • NAOUM BLINDER

Vocalists

LOTTE LEHMANN • DUSOLINA GIANNINI • FREDERICK JAGEL
MUNICIPAL CHORUS

Guest Conductors

EFRAM KURTZ • CARLOS CHAVEZ • LORIN MAAZEL

TICKETS — SYMPHONY BOX OFFICE — SHERMAN, CLAY — Sutter 1331

WAR MEMORIAL OPERA HOUSE

MUNICIPAL CONCERTS

1944-1945
THE ART COMMISSION
Presents

SAN FRANCISCO
SYMPHONY ORCHESTRA
PIERRE MONTEUX, Conductor

DECEMBER 9



ALEXANDER BRAILOWSKY
THE POET OF THE PIANO IN AN ALL RUSSIAN PROGRAM

JANUARY 25



YEHUDI MENUHIN
SAN FRANCISCO'S OWN BRILLIANT GENIUS OF THE VIOLIN

FEB. 1-2-3-4
8-9-10-11



RUSSIAN BALLET
BALLET THEATRE
10 SPECTACULAR PERFORMANCES

MARCH 2



MARIAN ANDERSON
THE GREATEST CONCERT ARTIST OF THE DAY

APRIL 10



GRACE MOORE
RAOUL JOBIN
IN CONCERT VERSION OF "LOUISE"



FIVE STAR SEASON

Season Reservations Now!

★SIX EVENTS including opening night of Ballet Theatre and choice of any one other Ballet performance, also the four guest artist concerts.
\$11.40, \$8:40, \$6.90, \$4.80, \$3.60, tax incl. BOX OFFICE, Sherman, Clay, SU 1331



DE PAOLIS



VOTIPKA



GARRIS



TURNER



TISSIER



AVAKIAN



LAWLOR

ARTISTS OF *San Francisco* OPERA COMPANY

HOW TO PRONOUNCE THEIR NAMES

LICIA ALBANESE

Lee'-chee-ah Ahl-bah-nay'-zay

LORENZO ALVARY

Lorenzo Ahl-vah'ry

ARMANDO AGNINI

Ar-mahn'-dow Ah-nee'nee

SALVATORE BACCALONI

Sahl-vah-tow'-ray Bach-ah-low'-nee

ETIENNE BARONE

Et-yehn Bah-row'-nay

GEORGE CEHANOVSKY

George Chay-han-off'-skee

VIVIAN DELLA CHIESA

Vivian Dell-lah-Kee-ay'-zah

OTELLO CERONI

Otello Chay-row'-nee

ANTONIO DELL'OREFICE

Antonio Dell-oh-reff'-ee-chay

ALESSIO DE PAOLIS

Ah-less'-see-oh Deh Pah'-oh-leece

LILY DJANEL

Lee-lee Zhan-nell

HERTA GLAZ

Hair-tah Glahz

FREDERIC JAGEL

Frederick Yay-gel

RAOUL JOBIN

Rah-ool Zhoh-ban'

BRUNO LANDI

Brew-no Lahn'-dee

GAETANO MEROLA

Gah-yay-tahn'-oh Mare'-oh-lah

IVAN PETROFF

Ee-vahn Pet-roff

EZIO PINZA

Et'-see-oh Peen'-zah

LILY PONS

Lee-lee Pawnce

KARL RIEDEL

Karl Ree-dell

STELLA ROMAN

Stay-lah Row-mahn'

ROBERTO SILVA

Ro-bare'-tow Seel-vah

RISE STEVENS

Ree'-suh Stevens

FRANCESCO VALENTINO

Francesco Vah-lenn-teen'-oh

*Tribute
Silk*



A Gump-created hostess gown in celadon green, sapphire blue, Imperial yellow and Chinese plum. The material, Tribute Silk, now virtually unobtainable, was used by the Chinese to pay taxes.

Mandarin Room

GUMP'S

250 POST STREET

MONDAY NIGHT, OCTOBER 16, at 8:00

†FALSTAFF

Comic opera in three acts. Music by Giuseppe Verdi.

Text by Boita after "The Merry Wives of Windsor" by Shakespeare.

THE CAST

Sir John Falstaff.....	SALVATORE BACCALONI	
Fenton, a young nobleman.....	BRUNO LANDI	
Ford, a wealthy burgher.....	IVAN PETROFF	
Dr. Caius, a physician.....	JOHN GARRIS	
Bardolph.....	} Followers of Falstaff {	ALESSIO DE PAOLIS
Pistol.....		LORENZO ALVARY
Mistress Ford.....	*VIVIAN DELLA CHIESA	
Nanette, her daughter.....	LICIA ALBANESE	
Dame Quickly.....	MARGARET HARSHAW	
Mistress Page.....	HERTA GLAZ	
A Page.....	KATHLEEN LAWLOR	

**San Francisco Opera debut*

Servants of Inn, Servants of Ford

Burghers and Street Folk, Maskers as Elves, Faïres, Witches

STAGE DIRECTOR

ARMANDO AGNINI

CONDUCTOR

*WILLIAM STEINBERG

CHORUS DIRECTOR

KURT HERBERT ADLER

TIME AND PLACE: Fifteenth Century; Windsor.

Act I: Scene 1: Room at the Garter Inn
Scene 2: Courtyard at Ford's Home

Act II: Scene 1: Same as Act I, Scene 1
Scene 2: Room in Ford's Home

Act III: Scene 1: Same as Act I, Scene 1
Scene 2: Windsor Forest at Night

Settings designed by Armando Agnini and constructed in the studios of the San Francisco Opera Association.

†Popular Series Performance of "Falstaff" Thursday, October 26

SEATS FOR ALL REMAINING PERFORMANCES ARE
AVAILABLE AT OPERA BOX OFFICE, CITY OF PARIS

Encores not permitted — Bell rings three minutes before curtain rises

The Story of "Falstaff"

ACT I

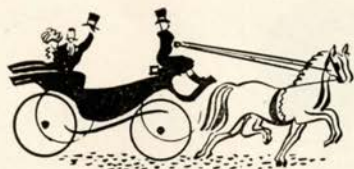
Falstaff and his trusty followers, Bardolph and Pistol, are driving their ribald sport with Dr. Caius whom they have just robbed. After the Doctor leaves the fat knight unfolds his latest scheme for making money. He will make love to the two wealthy wives, Mistress Ford and Mistress Page. He asks Bardolph and Pistol to deliver to each an identical note of affection he has written. They balk. Falstaff kicks them out and sends the notes by a page. (Scene 2) Mistress Ford and Mistress Page meet and compare notes. They are identical. With Nanette and Dame Quickly they plan revenge upon Falstaff and depart. Entering with Ford, Dr. Caius and Fenton, Bardolph and Pistol disclose Falstaff's amorous project. They, too, plan revenge. Ford will visit Falstaff in disguise and lure him into a trap. They leave while Fenton and Nanette enjoy a love scene which is soon interrupted by the returning women.

ACT II

Dame Quickly delivers to Falstaff a note from Mistress Ford making an appointment for the afternoon. The fat knight is overjoyed. Ford is announced under the name of Brook. He pretends to love Mistress Ford and offers Falstaff a fee if he will aid him in his hopeless quest. Falstaff agrees and discloses that he has a rendezvous with the lady that very afternoon. This astounds Ford who now believes that his wife is deceiving him after all. Falstaff leaves to don his best attire for the adventure of the afternoon. (Scene 2) Dame Quickly tells the women of her visit to Falstaff and that he soon will arrive. Perceiving him coming they retire. Falstaff enters and immediately begins making violent love to Mistress Ford. Mistress Quickly rushes in crying that Ford is coming on the hunt for his wife's lover. Falstaff hides behind a screen as Ford and his friends arrive. Ford searches a basket of dirty linen which the women had provided for the occasion but finds nothing. During his search of other parts of the house Falstaff is hidden in the basket. Fenton and Nanette take advantage of the screen for a little love-making. Ford returns and, hearing a kiss from behind the screen, thinks he has Falstaff. Disgusted at his error he continues his search while Mistress Ford commands the servants to carry the basket of linen with the now almost suffocating Falstaff to the window and dump its contents into the river.

ACT III

Dame Quickly comes to express Mistress Ford's sorrow at the occurrence of the day before and to make a new appointment in Windsor Park for the night. Sir John falls into the trap. Ford is taken into the secret this time. Dame Quickly overhears Ford promising Dr. Caius to let him have Nanette as his wife immediately and runs to warn the lovers. (Scene 2) Fenton and Nannette arrive and pledge their vows anew. Mistress Ford meets Falstaff and he again begins making mad love. The men, disguised as elves and nymphs bear down on him and beat him unmercifully. Ford, satisfied with his vengeance on Falstaff, consents to the wedding of Nanette and Fenton, to the happiness of all.



"Those Good Old Days"
revived at

Goman's
WAGAY NINETIES

SCOOP!

Gilbert and Sullivan

REPERTOIRE

Presented by

THE SAVOY OPERA COMPANY

H. M. S. PINAFORE • PIRATES OF PENZANCE
MIKADO or Gangster of Japan • TRIAL BY JURY

STAR CAST • FINEST SINGING COMPANY

GORGEOUS COSTUMES • SPECTACULAR PRODUCTION

FRITZ BERENS, Musical Director



Starts End of October — LIMITED ENGAGEMENT



RESERVATIONS TAKEN NOW • OPERA BOX OFFICE, CITY OF PARIS
EXbrook 8585, or at Theatre — BUSH STREET MUSIC HALL



BEAUTY

PURPLE PATH TO HAPPINESS

In every age, in every civilization, beauty has smoothed the path toward happiness. Whatever loveliness you have, heighten it, cultivate it, hold it against the years with the beauty preparations of Germaine Monteil. They will serve your beauty well, making it glow more brightly today, guarding it for tomorrow and tomorrow.

Germaine Monteil

TUESDAY NIGHT, OCTOBER 17, at 8:15

RIGOLETTO

Opera in four acts. Music by Giuseppe Verdi.

Text by Francesco Maria Piave, founded on Victor Hugo's drama
"Le Roi s'Amuse."

THE CAST

Rigoletto, a hunchback, jester to the Duke.....	LEONARD WARREN
Gilda, his daughter	LILY PONS
Duke of Mantua, a titled profligate.....	JAN PEERCE
Sparafucile, a hired assassin.....	ROBERTO SILVA
Maddalena, his sister.....	HERTA GLAZ
Count Monterone.....	ROBIN NELSON
Count Ceprano.....	EDWARD WELLMAN
Borsa.....	ALESSIO DE PAOLIS
Marullo.....	GEORGE CEHANOVSKY
Countess Ceprano.....	MARY HELEN MARKHAM
Giovanna	THELMA VOTIPKA
Page.....	KATHLEEN LAWLOR

Courtiers, Pages, Servants.

Corps de Ballet

STAGE DIRECTOR
ARMANDO AGNINI

CONDUCTOR
PIETRO CIMARA

CHORUS DIRECTOR
KURT HERBERT ADLER

TIME AND PLACE: Sixteenth Century; Mantua and Vicinity

Act I: Ballroom in the Duke's Palace

Act II: A Street outside Rigoletto's House

Act III: Hall in the Duke's Palace

Act IV: Ruined Inn in a Lonely Spot — Sparafucile's Home

SEATS FOR ALL REMAINING PERFORMANCES ARE
AVAILABLE AT OPERA BOX OFFICE, CITY OF PARIS

Encores not permitted — Bell rings three minutes before curtain rises

The Story of "Rigoletto"

ACT I

The court of the Duke of Mantua is a place of debauchery. Rigoletto, a hunchback jester, whose biting wit has made him many enemies among the courtiers, panders to the Duke's depravity. The jester has a daughter, Gilda. But knowing so intimately the follies of his time he has kept her in a far quarter of the city to hide her fact and person from his profligate associates. The Duke, however, has seen her several times in church and, disguised as a student, has won her love. The curtain rises on a fête in the palace of the Duke who tells his confidant, Borsa, of the unknown beauty. But charms at hand are not to be overlooked and he courts the Countess Ceprano under the very eyes of her husband. Marullo has discovered Rigoletto's secret but believes Gilda to be his mistress. He plans with the courtiers for her abduction to avenge themselves on the jester. Monterone, who has lost his wife and daughter to the Duke, comes to the fête and pronounces a father's curse on Rigoletto and his master much to the terrification of the hunchback.

ACT II

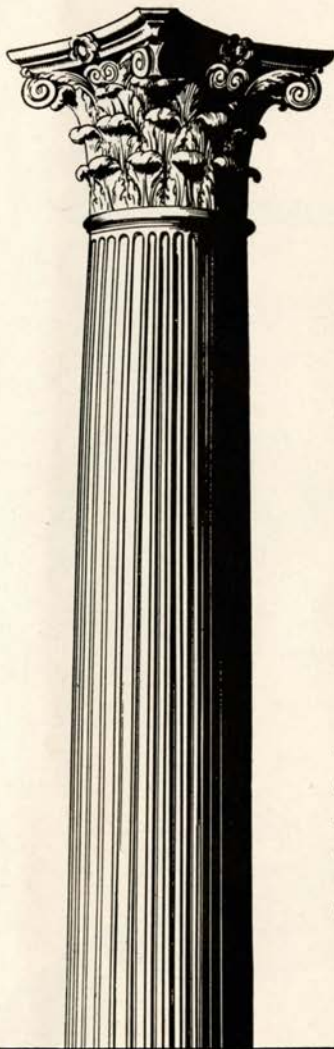
Rigoletto hurriedly steals to the house where Gilda is kept secluded. He meets Sparafucile, a professional killer, and promises to bear him in mind should he wish to make away with any enemies. Entering the courtyard of his home, Rigoletto embraces Gilda tenderly and, remembering the curse, commands her never to leave the house. As they talk the Duke, in student's guise, slips into the yard through connivance with Gilda's maid. The Duke and Gilda are exchanging vows following the departure of Rigoletto, when they hear approaching voices and the Duke hurries away. Rigoletto meets the party of courtiers who have come to carry out their plan for the abduction of Gilda. To mislead him they ask his aid in abducting the Countess Ceprano. Rigoletto submits to blindfolding and holds the ladder down which they carry Gilda. Left alone he removes the blind and realizes that he has been duped.

ACT III

The Duke, having returned to the hunchback's home to find his bird flown, is now back at the palace disconsolate. Informed that Rigoletto's "mistress" has been captured and is in the next room he hastens in to her. Rigoletto enters and, despite pitiable jocular attempts at concealment, breaks down and heartbrokenly admits the abducted girl to be his daughter. The door opens and Gilda rushes into his arms as he vows vengeance on the Duke.

ACT IV

To prove the Duke's falseness to Gilda who still loves him, Rigoletto takes her to Sparafucile's inn where she hears her lover with Maddalena, the inn-keeper's sister. Heartbroken she goes away with her father to prepare for flight from the city. Rigoletto returns and bargains with Sparafucile for the murder of the Duke. Gilda, beaten back to the inn for shelter from a storm which has arisen, hears Sparafucile promise Maddalena to spare the Duke's life if another person comes to the inn who might be murdered in his stead. Gilda enters, is killed and her body, in a sack, is delivered to Rigoletto.



Your Will *cannot* bequeath "good judgment"

By intelligent management you have built up your Estate. Your Will sets up the Plan you want your Executor to follow.

If you appoint an *individual* as Executor and Trustee, will his judgment in handling your estate match your judgment in creating it? And will he remain always in good enough health, and be free enough from his own personal affairs to give your Plan his best attention?

On the other hand, by appointing this Bank as Executor and Trustee you are definitely assured specialized experience, group judgment and careful attention throughout the life of your estate. Our *continuing staff* of seasoned estate managers can and do faithfully follow both the letter and the spirit of your Plan.

Get details from any officer of this Bank.

Head Office: 400 CALIFORNIA STREET
Mission Branch: 16TH & JULIAN AVENUE

THE BANK OF CALIFORNIA

NATIONAL ASSOCIATION
Founded in 1864

SAN FRANCISCO · PORTLAND · SEATTLE · TACOMA

BUY U. S. WAR BONDS
AND STAMPS

1944
OUR
EIGHTIETH
ANNIVERSARY
YEAR

MEMBER FEDERAL DEPOSIT INSURANCE CORPORATION



DANCING ON THE PENINSULA

in the beautiful

GARDEN ROOM

EVERY SATURDAY EVENING

featuring the romantic voice of

BOB KEELY

with the

**BENJAMIN FRANKLIN HOTEL
ORCHESTRA**

IN SAN MATEO

30 MINUTES FROM SAN FRANCISCO

Hotel **BENJAMIN
FRANKLIN**
SAN MATEO CALIF.

DUANE GOWLAND, Mgr.

CORONET v.s.o. BRANDY

...delicious with soda



California Grape Brandy 84 proof.
Cresta Blanca Wine Company, Inc., Los Angeles, Calif.

The Proscenium Arch



is built to be the frame for
pictures created upon a stage.

To form these pictures many are called
to help. . . . The Moving, Living and Col-
orful pictures, so full of delightful detail
captivate the eye. . . . It has been our
privilege to offer to the Opera Lovers of
San Francisco the products of our effort.
For many years we have been the exclusive
designers and producers of costumes for
this outstanding organization. May we be
of service to you.

GOLDSTEIN & CO.

989 Market St.

Est. 1868

Garfield 5150

OPERA BOX HOLDERS

Season 1944

MR. AND MRS. C. ROBERT ADAMS
MR. AND MRS. GEORGE WASHINGTON BAKER, JR.
MRS. GEORGE EDWIN BENNETT
MR. AND MRS. CHARLES R. BLYTH
MR. AND MRS. JAMES PARKS BRADLEY
MR. AND MRS. JOHN DAVIS BRADLEY
MR. AND MRS. ROY BRONSON
MR. AND MRS. GEORGE T. CAMERON
MR. AND MRS. WILLIAM W. CROCKER
MRS. FRANK P. DEERING
MR. AND MRS. SIDNEY M. EHRMAN
MR. AND MRS. MORTIMER FLEISHHACKER
DR. AND MRS. FRANK R. GIRARD
MR. AND MRS. JOSEPH T. GRACE
MR. AND MRS. CHARLES L. HARNEY
MRS. I. W. HELLMAN
MRS. ALFRED HERTZ
MR. AND MRS. CLARENCE LORAN JOHNSTON
MRS. MARCUS S. KOSHLAND

MRS. LEWIS LAPHAM
MR. AND MRS. JULLIARD McDONALD
MR. AND MRS. FELIX MCGINNIS
MR. AND MRS. FREDERICK W. McNEAR
MR. AND MRS. GAETANO MEROLA
MR. AND MRS. C. O. G. MILLER
MR. AND MRS. EPPS J. MILLER
MR. AND MRS. KENNETH MONTEAGLE
MRS. STANHOPE NIXON
MRS. GEORGE A. POPE
MRS. ARLINE M. ROLKIN
MRS. HENRY POTTER RUSSELL
SAN FRANCISCO OPERA GUILD
JUDGE AND MRS. M. C. SLOSS
MRS. SIGMUND STERN
MR. AND MRS. BERTRAM V. STURDIVANT
DR. AND MRS. DAVID ARMSTRONG TAYLOR
MR. AND MRS. NION R. TUCKER

Angelo J. Rossi Co. INC.

45 Grant Avenue

Douglas 8060

Flowers

Distinctive Creations for All Occasions

FLOWERS TELEGRAPHED ANYWHERE

Angelo J. Rossi Co., Inc.

Angelo J. Rossi, Pres. and Mgr.

Famous for Flowers Since 1885

A Visit After the Opera to the

CARDINAL RICHELIEU *Cocktail Lounge*

IS A PERFECT ENDING TO A PERFECT DAY

THE COCKTAIL LOUNGE WITH
A DISTINCTIVE ATMOSPHERE

THE RICHELIEU HOTEL

VAN NESS AT GEARY

Time Tonight for a la Carte Supper and Midnight Show

MAYRIS CHANEY'S **GLAMOUR-TIME REVUE**

Starring JACK TAYLOR, America's Streamlined Comedian

DOUG RICHARDSON and his "Marionettes" • TERRY ANDRE, *Gorgeous Singing Starlette* • MARYANNE BAXTER and her "Dance of the Petals" • *The Glittering Mayris Chaney "BEVY OF BEAUTIES"* • FRANKLYN SMITH and his *Entertaining Orchestra*

DINNERS from \$2.00—No Cover Charge

★

1st Show at 7:30 p.m.

DAVE HERSH'S ROMANTIC

RICHELIEU CASINO

1039 GEARY ST.

ORdway 0113

BELFAST

★

*Manufactured
by the makers
of*

BELFAST
Dry

GINGER ALE

*Famous
Since 1877*

★



*Sparkling
Water*

PURE, wholesome and delightful to the taste, Belfast Sparkling Water is the ideal table beverage...it is *supreme* among the better mixers—heightens the flavor of other beverages and gives longer-lasting sparkle in the glass.

BELFAST BEVERAGE CO.

820 Pacific Avenue

DOuglas 0547

San Francisco

CITY TRANSFER CO.

SERVES SAN FRANCISCO OPERA CO.

WHY NOT YOU?

MOVING - STORAGE - SHIPPING
333 TURK STREET PROspect 3060

HANCOCK BROS.

ROLL AND RESERVED SEAT TICKETS

25 JESSIE STREET ★ DOuglas 2191

San Francisco, 5, California

GUARANTOR MEMBERS

of the

SAN FRANCISCO OPERA ASSOCIATION

C. Edgar Adams
Mr. and Mrs. C. Robert Adams
Mrs. John S. Adler
Mrs. Wallace M. Alexander
Lucy H. Allyne
T. E. Ambrose
Mr. & Mrs. George Washington Baker, Jr.
Edward R. Bacon
A. R. Baldwin
B. A. Banker
Mrs. John T. Barnett
Peter Barnett
Mrs. Edward F. Barron
Irving P. Bartel
Mr. and Mrs. Robert S. Beall
Mr. and Mrs. F. N. Belgrano, Jr.
John Bender
Mr. and Mrs. David Benioff
Mrs. George E. Bennett
Mrs. Charles H. Bentley
Mrs. Walter H. Bentley
Dr. and Mrs. Tholow Binkley
Newton Bissinger
W. Harry Blatchly
Louis Bloch
Charles R. Blyth
Mrs. Angus Gordon Boggs
Mrs. Robert C. Bolton
Mrs. George M. Bowles
Dr. Karl M. Bowman
Louise A. Boyd
Walter C. Brauns
Mrs. William Ellery Briggs
Mr. and Mrs. Roy A. Bronson
Mrs. Julia Fox Brooke
George W. Brooks
Dr. LeRoy Brooks
Arthur M. Brown, Jr.

Mr. and Mrs. James A. Brown
Mrs. Louis C. Brown
Ralph Brown
Walter Brown
Mrs. E. E. Brownell
Starr Bruce
Mr. and Mrs. Frank E. Buck
Dr. Leonard W. Buck
Thomas Buck
Mrs. Neil Buckley
Mrs. Felix Butte
John R. Cahill
Dr. William Otis Callaway
Mr. and Mrs. George T. Cameron
Leo Cardoza
Estelle Carpenter
Selah Chamberlain, Jr.
Charles A. Christin
Mrs. Tobin Clark
Mrs. Warren D. Clark
Mrs. John P. Coghlan
Mr. and Mrs. George D. Cohn
Mrs. Max M. Cohn
Mrs. Colbert Coldwell
Persis H. Coleman
Mr. and Mrs. Jesse Colman
H. D. Collier
J. J. Coney
Mary R. Conlin
Dr. and Mrs. Frederick C. Cordes
Mrs. W. M. Craig
Arthur S. Crites
William W. Crocker
George E. Crothers
R. K. Davis
Mrs. Stuart Davis
Davis-Schonwasser

Florence E. Dean
Mrs. Charles J. Deering
Mrs. Frank P. Deering
In Memoriam
Frank P. Deering
Mrs. Georges de Latour
Frank H. Denman
Mr. and Mrs. John Michael Desch
Richard Detert
Mrs. Robert T. Devlin
Mrs. Donald R. Dickey
Mrs. L. W. Dinkelspiel
Mrs. Samuel L. Dinkelspiel
Mr. and Mrs. O. Dewey Donnell, Jr.
Katharine Donohoe
Mrs. F. A. Dorn
Mrs. Lambert Dunbar
Dr. Muriel E. Edwards
Mr. and Mrs. Albert L. Ehrman
Mrs. Alfred Ehrman
Sidney M. Ehrman
Mrs. S. W. Ehrman
Wilfred Eldred
H. A. Ellis
John W. Elwood
Mrs. Milton H. Esberg
Mrs. Harold K. Faber
Paul I. Fagan
Lionel B. Feigenbaum
Mrs. Alexander Field
Mr. and Mrs. Marshal H. Fisher
Mortimer Fleishhacker
John F. Forbes
Mr. and Mrs. Edward T. Ford
Jennie S. Frank
Mr. and Mrs. Thomas G. Franck
William Fries

FLOWERS

MAKE THE PERFECT GIFT...THEY SPEAK ALL
LANGUAGES...AND THEY WILL BE ESPECIALLY
ELOQUENT IF THEY ARE FROM...

Podesta & Baldocchi

America's Most Famous Florists

224 GRANT AVENUE, SAN FRANCISCO

Telephone: SUTTER 6200



The World's Only True

DAPHNE

ROLLEY alone has captured the fresh, natural fragrance of the Daphne . . . in superb quality perfume or rich, full-bodied cologne. True Daphne is but one of the Forty Famous Fragrances in perfume and matching cologne awaiting your selection.

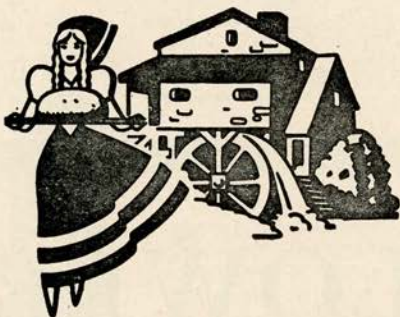
Perfume . . . \$1.25 dram
to \$8.00 ounce.
Matching Cologne, \$2.00
for 3 ounces.
Add 20% Federal Tax

ROLLEY
PERFUMES



"TRULY AMERICA'S FINEST"

108 GEARY NEAR GRANT... 361 SUTTER BELOW STOCKTON... EXBROOK 4471



There's a Fine art in bread
making, too. Every **OROWEAT**
loaf is a masterpiece.

The **GRIST-MILL BAKERS**

OROWEAT

GUARANTOR MEMBERS — *Continued*

Nelly Gaffney
 Maurice A. Gale
 L. Galtie
 Vallejo Gantner
 Mr. and Mrs. Henry Gede, Jr.
 James P. George
 D. Lyle Ghirardelli
 Mrs. Domingo Ghirardelli
 Dr. and Mrs. Arthur Collis Gibson
 George B. Gillson
 Dr. and Mrs. Frank R. Girard
 Mr. and Mrs. Harry Gittings, Jr.
 Rosemary Glosz
 Louis Goldstein
 Lutie D. Goldstein
 Mr. and Mrs. Jack Gomperts
 Lorraine C. Goodman
 Mr. and Mrs. Joseph T. Grace
 Mrs. Joseph D. Grant
 Mrs. Maurice S. Greenberg
 Stuart N. Greenberg
 Mrs. Frederick S. Greenlee
 Gustav Gumpel
 Madeleine Haas
 Marshal Hale
 Prentis C. Hale, Jr.
 R. B. Hale
 Herbert E. Hall
 Eminel P. Halsted
 W. F. Hanrahan
 Mrs. Robert D. Harden
 W. Glenn Harmon
 Mrs. Charles L. Harney
 Maurice E. Harrison
 Mrs. Russell P. Hastings
 Mrs. Elystus Hayes
 Mrs. Timothy Hayes
 A. W. Hazen
 Mrs. E. S. Heller
 Walter D. Heller
 Walter S. Heller
 Mrs. I. W. Hellman
 Mrs. Robert B. Henderson

Mrs. Rudolph G. Henning
 Dr. Ernest E. Hessing
 Leslie W. Hills
 Mr. and Mrs. Harry Hilp
 Osgood Hooker
 L. Arundel Hopkins
 Mrs. J. H. A. Hornlein
 Dr. John F. Huffman
 Marian Huntington
 Mrs. James Irvine
 Dr. S. Nicholas Jacobs
 R. J. Jansen
 Clancy Ann Jefferys
 Mr. and Mrs. Louis Jefferys
 Ector R. Johnson
 Mr. and Mrs. Clarence Lorán Johnston
 General Kenyon A. Joyce
 Mrs. Ira Kahn
 Henry J. Kaiser
 Edward D. Keil
 H. C. Kelsey
 Charles Kendrick
 Marion H. Kent
 Percy L. King
 Dr. John J. Kingston
 R. W. Kinney
 Mrs. Josephine R. Kleiniung
 Mrs. William E. Kleinsorge
 Robert L. Kline
 Caroline Korbel
 Elsa R. Korbel
 Mrs. Jesse Koshland
 Mrs. Marcus S. Koshland
 Frederick J. Koster
 Mr. and Mrs. Edwin V. Krick
 Gus Kroesen
 Esther Kuenz
 Mrs. Albert George Lang
 Mrs. Philip Lansdale
 Mrs. Lewis Lapham
 Mrs. Charles G. Lathrop
 Edwin Leitch

John A. Lesoine
 J. B. Levison
 Philip N. Lilienthal
 Mr. and Mrs. Samuel Lilienthal
 Mr. and Mrs. William J. Lindenberg
 Clarence R. Lindner
 F. L. Lipman
 Mrs. Norman B. Livermore
 Mr. and Mrs. James K. Lohead
 Mrs. A. J. Lowrey
 Louis R. Lurie
 Edmunds Lyman
 James W. McAlister
 Mr. and Mrs. A. M. McCarty
 Adelaide McColgan
 Mrs. William H. McCormick
 Mr. and Mrs. Juilliard McDonald
 Mrs. Mark L. McDonald
 Mrs. John McGaw
 Mr. and Mrs. Felix S. McGinnis
 Mrs. Alfred McLaughlin
 Mrs. Clarissa McMahan
 Mrs. George P. McNear
 Peter Macris
 Mr. and Mrs. Grover A. Magnin
 Mrs. J. W. Mailliard, Jr.
 Mrs. Joseph A. Mancini
 Mr. and Mrs. George M. Mardikian
 Edward Martin
 Mr. and Mrs. R. W. Martenet
 A. C. Mattei
 Harry D. Maxwell
 Evelyn Mendessolle
 Mr. and Mrs. Gaetano Merola
 Mrs. Helen Merritt
 Mrs. George H. C. Meyer
 Mr. and Mrs. Julian Meyer
 Mrs. C. F. Michaels
 Mr. and Mrs. C. O. G. Miller
 Mr. and Mrs. Epps J. Miller
 Mr. and Mrs. Edward F. Moffatt
 Henrietta Moffatt

REMEMBER THE NAME

Freed-Eisemann

when you buy your post-war radio-phonograph with FM

"One of the world's great radio-phonographs"

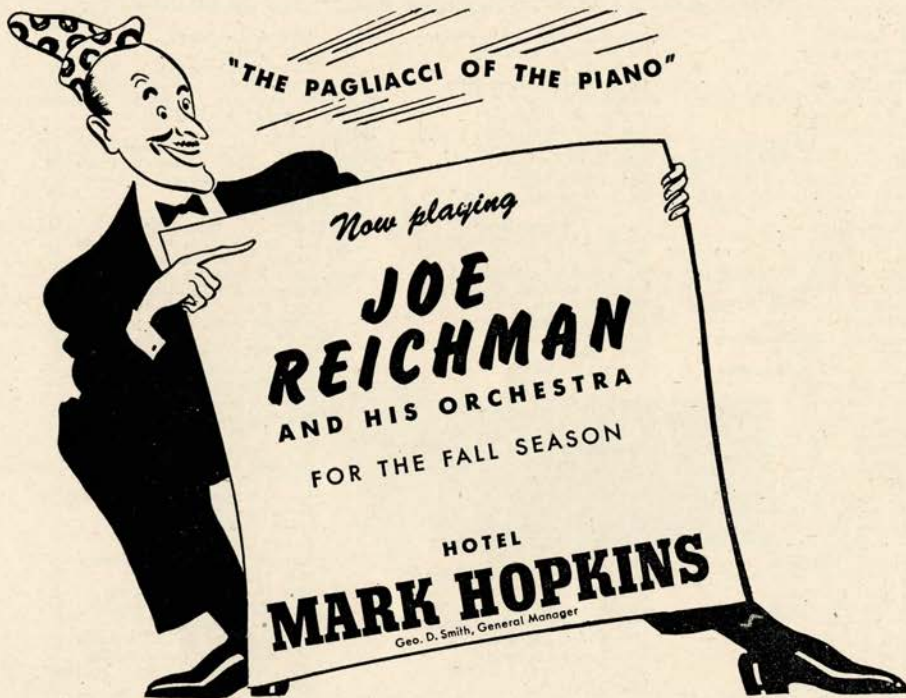
Freed Radio Corporation, New York, N. Y.



BUY MORE WAR BONDS!

VANESSI'S

GOOD FOOD



COLUMBIA CONCERTS, INC.

Presents

"GREAT NAMES IN MUSIC"

Appearing 1944 San Francisco Opera Season

LICIA ALBANESE
 LORENZO ALVARY
 CHARLES KULLMAN

MARGARET HARSHAW
 LILY PONS
 RISE STEVENS

Appearing San Francisco Opera Concert Series, 1944-1945

ROBERT CASADESUS
 ADOLF BUSCH LITTLE SYMPHONY
 DON COSSACKS (PLATOFF)
 DRAPER AND ADLER

DINO FRANCESCATTI
 DOROTHY MAYNOR
 JAMES MELTON
 BIDU SAYAO
 RISE STEVENS

Appearing with San Francisco Symphony, 1944-1945 Season

HEIFETZ
 YEHUDI MENUHIN

ERICA MORINI
 CARLOS CHAVEZ

LORIN MAAZEL
 EFREM KURTZ

COLUMBIA CONCERTS, Inc. 113 West 57th Street, New York

San Francisco Representative, PAUL POSZ, War Memorial Opera House

Los Angeles Representative, L. E. BEHYMER, 415 Auditorium Building

GUARANTOR MEMBERS — *Continued*

James K. Moffitt
 Mr. and Mrs. Kenneth Monteagle
 Mr. and Mrs. Paige Monteagle
 Frederick H. Montgomery
 Mrs. Joseph A. Moore
 A. C. Morici
 Guido J. Musto
 Laura Musto
 Mr. and Mrs. A. E. Nelson
 Mr. and Mrs. Ralph R. Nelson
 Julia M. Neppert
 Arthur A. & Hugo D. Newhouse
 Dr. and Mrs. Alfred Newman
 Mr. and Mrs. John Francis Neylan
 Mrs. Stanhope Nixon
 Mrs. Mary L. Obujen
 Benjamin J. Older
 Mrs. Edwin Letts Oliver
 Mr. and Mrs. Charles R. Page
 Mrs. S. H. Palmer
 Mrs. Henry Passow
 Dr. Sadie D. Patek
 Peninsula Box Office
 Mrs. O. B. Perry
 George W. Phillips, Jr.
 Mrs. Grattan D. Phillips
 Mrs. Herman Phleger
 Mr. and Mrs. G. Pisani
 Aram Poladian
 Mrs. George A. Pope
 Mrs. Paul Posz
 Mrs. Ashton H. Potter
 Mr. and Mrs. Stanley Powell
 Colonel John Sedgwich Pratt
 Dr. Edward Purcell
 John B. Quigley
 Mrs. Carl Raiss
 A. S. Rees
 Dr. and Mrs. Ralph A. Reynolds
 Neville J. Rich
 Mrs. H. A. Richardson

Mrs. Nathan Rogers
 Mrs. Arline M. Rolkin
 Col. and Mrs. Robert A. Roos
 Mr. and Mrs. John N. Rosekrans
 Leland S. Rosener
 Mrs. Angela Wing Roth
 Mr. and Mrs. William P. Roth
 John Rothschild
 Ken F. Royce
 Mohr M. Rubin
 Frank K. Runyon
 Mrs. A. S. Russell
 A. K. Salz
 Horace H. Scales
 Mr. and Mrs. Carl Schaubye
 Else Schilling
 Dr. Walter Schilling
 George B. Schirmer
 Mrs. Frank Schwabacher
 James H. Schwabacher
 Mrs. Louis A. Schwabacher
 Harry S. Scott
 Don Searle
 Mr. and Mrs. Richard H. Shainwald
 Mr. and Mrs. R. S. Shainwald
 Mrs. Nelson Towne Shaw
 Frederic R. Sherman
 Richard O. Simon
 Mrs. Norman J. Sigclair
 Mrs. Edgar Sinton
 Charles W. Slack
 Mrs. Leon Sloss
 Judge and Mrs. M. C. Sloss
 Stanley C. Smallwood
 Mr. and Mrs. Charles Watt Smith
 Capt. George Willard Somers
 Fred H. Spiess
 Mrs. Edward B. Stanwood
 G. A. Starkweather
 Mr. and Mrs. Ralph J. A. Stern
 Mrs. Sigmund Stern

Dr. and Mrs. John Philip Strickler
 Benka Strickler
 John P. Strickler III
 B. V. Sturdivant
 Mr. and Mrs. Walter H. Sullivan
 Mrs. Ernest J. Sultan
 Mr. and Mrs. Alfred Sutro
 Louis Sutter
 E. J. Sweetland
 Mrs. Andrew B. Talbot
 Mrs. David Armstrong Taylor
 Mr. and Mrs. William Timson
 George C. Thierbach
 Mrs. Myron I. Thomas
 E. W. Thompson
 Mr. and Mrs. Morley Thompson
 Mr. and Mrs. C. R. Tobin
 Mr. and Mrs. Ernest J. Torregano
 Dr. and Mrs. Harold Guyon Trimble
 Gina Troya
 Mrs. Alfred Tubbs
 Mr. and Mrs. Nion R. Tucker
 Mr. and Mrs. Daniel Volkmann
 George Wagner
 Morton Wallace
 Whitney Warren, Jr.
 Mr. and Mrs. Michel D. Weill
 Mrs. Millard C. White
 Cynthia V. Whitman
 Rich Whitmore
 Mrs. F. A. Wickett
 Robert L. Wiel
 Mr. and Mrs. Brayton Wilbur
 Stephen Williams
 Mrs. J. L. Wolf
 Barbara Young
 Mr. and Mrs. F. A. Zane
 Mrs. V. Zaruba
 Joan Zeegers
 Mr. and Mrs. J. D. Zellerbach
 Edgar T. Zook

In the Mural Room

MONDAY NIGHT
 and every evening
 before 8:30... enjoy
 the finest foods in
 luxurious surroundings

AFTER THE OPERA
 ... still time for two
 hours of dancing...
 to the music of
TED WEEMS
 and his orchestra
 nightly except Monday
 8:30 till 1 and Saturday
 afternoon Tea Time

NO COVER CHARGE
NO CABARET TAX
 Concert Music

Hotel St. Francis
 Dan E. London - General Manager



KARL C. WEBER
President and
General Manager

At the Civic Center . . . so conveniently near . . .
Hotel Whitcomb is the home of the Whitcomb
Inn, the Dickens Pub and The Parade Cocktail
Lounge.

HOTEL WHITCOMB
MARKET STREET AT 8TH



Simi Vineyard

FINE CALIFORNIA WINES

When entertaining, serve superb SIMI
vintage table wines . . . Burgundy,
Cabernet, Carignan, Zinfandel, and
Larose, Sauterne, Chablis . . . ma-
tured with unhurried care from
choicest Sonoma hillside grapes
. . . ask for SIMI . . . pronounced
See-Me . . . at your dealer's.

PARROTT & CO. . . San Francisco . . Sole U. S. Distributors

SAN FRANCISCO OPERA GUILD, INC.

MRS. ROGER D. LAPHAM, JR., *Chairman*

MRS. JOHN PHILLIP COGHLAN, JR., *Vice-Chairman*

MRS. FREDERICK WHITMAN, *Secretary*

MRS. STANLEY POWELL, *Vice-Chairman*

MR. JERD SULLIVAN, *Treasurer*

Members

- Mrs. Lloyd S. Ackerman
Mrs. Arthur C. Adams
Mr. C. Edgar Adams
Mrs. Alexander Albert
Mrs. Wallace M. Alexander
Mrs. Berrien Anderson
Miss Margaret Andrews
Mr. Noel T. Arnold
Mrs. R. M. Barthold
Mrs. Edward Otis Bartlett
Mrs. Julian Palmer Beek
Mr. A. M. Benfield
Mrs. G. Grace Benoist
Mrs. Charles H. Bentley
Miss Jessie E. Benton
Dr. and Mrs. Tholow Binkley
Mrs. Roy N. Bishop
Mrs. Charles N. Black
Miss Jennie M. Blair
Miss Phyllis Bliss
Mr. Louis Bloch
Miss Ruth V. Bloch
Mrs. Walter W. Boardman
Mrs. Angus Gordon Boggs
Mrs. George M. Bowles
Miss Louise A. Boyd
Mr. and Mrs. James Parks Bradley
Mr. H. Sewall Bradley
Mr. and Mrs. John D. Bradley
Mrs. M. J. Brandenstein
Mrs. Edward Bransten
Mrs. W. C. Brauns
Mrs. A. F. Bray
Miss Bogardus Brodt
Mrs. Julia Fox Brooke
Mr. Arthur M. Brown, Jr.
Mrs. Hillyer Brown
Mrs. E. E. Brownell
Mr. Frank J. Brucato
Mrs. Starr Bruce
Mr. Starr Bruce
Lt. and Mrs. Neil Buckley
Mrs. Robert B. Burroughs
Miss Estelle Carpenter
Dolores Calles
Major C. J. Carey
Mr. George T. Cameron
Mr. Russell Carpenter
Mrs. John Casserly
Mrs. A. L. Chickering
Mr. Drew Chidester
Madame Clara
Mrs. John P. Coghlan
Mrs. John Phillip Coghlan, Jr.
Mr. John P. Coghlan
Mrs. Max M. Cohn
Miss Persis H. Coleman
Mr. H. D. Collier
Mrs. Jesse D. Colman
Miss Mary R. Conlin
Mrs. W. B. Cope
Mrs. Charles Crocker
Mr. Templeton Crocker
Judge George E. Crothers
Mrs. John D. Crummev
Mrs. O. K. Cushing
Mrs. Chester Dahl
Mrs. John F. Davis
Mrs. Charles J. Deering
Mrs. Georges deLatour
Mr. Frank H. Denman
Mr. and Mrs. John Michael Desch
Mrs. Lloyd W. Dinkelspiel
Mrs. Samuel L. Dinkelspiel
Mr. and Mrs. Dewey Donnell
Miss Katherine Donohoe
Mrs. Warrington Dorst
Mrs. Paul M. Downing
Mrs. Frank R. Dray
Mrs. H. B. Drescher
Mrs. Lambert Dunbar
Mrs. Charles Dunphy
Dr. Muriel E. Edwards
Mr. Philip Ehrlich
Mrs. Alfred Ehrman
Mrs. Sidney Ehrman
Mrs. Milton H. Esberg
Mrs. Walter Filer
Mrs. Marshall Fisher
Mrs. Herbert Fleishhacker, Jr.
Mrs. Mortimer Fleishhacker, Jr.
Mrs. George Flood
Mrs. B. C. Floyd
Mrs. John F. Forbes
Mrs. Bernard W. Ford
Mrs. W. Parmer Fuller, III
Mrs. Alfred Ghirardelli
Mr. D. Lyle Ghirardelli
Mrs. Domingo Ghirardelli
Dr. and Mrs. Thomas A. Gibson
Mr. George B. Gillson
Dr. Frank Girard
Mrs. Frank Girard
Mrs. J. H. Glide
Mrs. Harry F. Gittings, Jr.
Miss Amelie Gier
Miss Lutie Goldstein
Mr. Jack Gomperts
Miss Lorraine C. Goodman
Mrs. James Graham
Mrs. Joseph D. Grant
Mrs. Spencer Grant
Mrs. Horace Gray
Mr. and Mrs. Stuart N. Greenberg
Mr. Emil Greenebaum
Mrs. Frederick L. Greenlee
Mrs. Gustav Gumpel
Mrs. Walter A. Haas
Mrs. Walter A. Haas, Jr.
Miss Ethel Hager
Mr. Marshall Hale
Mr. R. B. Hale
Mrs. Richard J. Hanna
Mrs. Robert D. Harden
Mrs. Charles L. Harney
Mrs. Russell Hastings
Mr. A. W. Hazen
Mrs. Richard Heimann
Mrs. E. S. Heller
Mr. Walter D. Heller
Mr. Walter S. Heller
Mrs. Frederick Hellman
Mrs. I. W. Hellman
Mrs. Wellington S. Henderson
Mrs. Alfred Hertz
Mrs. A. W. Hewlett
Mrs. Harold Hill
Mrs. Harry Hill
Mrs. Stanley Hiller
Mr. and Mrs. Harry H. Hilp
Mrs. A. F. Hockenbeamer
Mrs. Clifford P. Hoffman
Mrs. Osgood Hooker
Mrs. Thomas Carr Howe, Jr.
Mrs. Thomas R. Hughes
Mrs. John Power Hutchins
Dr. S. Nicholas Jacobs
Mr. R. J. Jansen
Mr. Harold I. Johnson
Mr. Ivar Johnson
Mrs. Clarence Loran Johnston
Mrs. Henry J. Kaiser
Mr. Ben C. Keator



OUR SOCIAL HOSTESS WILL INTRODUCE YOU

JEAN MERRICK
703 Market St.
Suite 1302
YUkon 2923

A highly ethical introduction
bureau conducted in good
taste.
Telephone for appointment.

RAY'S BEAUTY STUDIO

233 POST STREET
Mezzanine Floor
Sutter 8691

Featuring *BEAUTIFUL NATURAL COLD WAVES*

The Zebra Room

ATOP NOB HILL
COCKTAILS
LUNCH ★ DINNER

A sophisticated atmosphere where meals
are better and charm is added by



HUNTINGTON HOTEL

1075 CALIFORNIA
EUGENE N. FRITZ, Managing Owner

BY APPOINTMENT TO
H. M. THE LATE KING OF PORTUGAL

CORGO

Number One Cocktail



Try it! Here's How: To a por-
tion of iced Corgo Number One
Fine Tawny Port add a twist of
orange peel. Delightful taste treat.

Imported by WILLIAMS IMPORTERS. A Division
of R. C. Williams & Co., Inc., 610 Fifth Ave., N. Y.

OPERA GUILD MEMBERS—Continued

<p>Mr. Charles Kendrick Mrs. Henry S. Kiersted Mrs. J. R. Kleinjung Miss Caroline Korbel Mrs. Abraham Koshland Mrs. Daniel Koshland Mrs. Marcus S. Koshland Mr. Frederick Koster Mr. Gus Kroesen Mrs. H. N. Kuechler, Jr. Miss Esther Kuenz Mrs. Albert George Lang Mrs. Philip V. H. Lansdale Mrs. Roger D. Lapham, Jr. Mrs. Roger D. Lapham Mrs. Thomas Larke, Jr. Mrs. Charles G. Lathrop Mrs. T. M. Lauridsen Mrs. Claude Lazard Mrs. Louis Lengfeld Mr. John A. Lesoine Mr. Albert Lester Mrs. Sidney Liebes Miss Frances Marie Lilienthal Mr. F. L. Lipman Miss Edith Livermore Mrs. Carl Livingston Mr. and Mrs. James K. Lohead Mrs. John Logan Mrs. Dan E. London Mr. James W. McAlister Mrs. Atholl McBean Mr. A. M. McCarty Mrs. W. H. McCormick Mrs. D. E. McLaughlin Mrs. George P. McNear Mrs. Thomas P. Mailliard Dr. Ergo A. Majors Mrs. Vivian Mann Mrs. Walter Martin Mrs. Charles Mayer Mrs. William G. Merchant Mrs. R. P. Merillion Mr. and Mrs. Gaetano Merola Mrs. H. C. Merritt, Jr. Mrs. John B. Metcalf Mr. C. O. G. Miller Mrs. Harry East Miller Pvt. Franklin Mittau Mr. Edward F. Moffatt Mr. J. K. Moffitt Mrs. Kenneth Monteagle</p>	<p>Mr. Kenneth Monteagle Mr. and Mrs. Paige Monteagle Mr. George Montgomery Mrs. James W. Morgan Dr. Grace McCann Morley Miss Alicia Mosgrove Miss Laura Musto Mrs. A. N. Nathan Miss Julia M. Neppert Mr. J. LeRoy Nickel, Jr. Miss Mary Obujen Mrs. Jack Okell Mr. Benjamin J. Older Mrs. Julius Oppenheimer Mrs. William H. Orrick Mrs. William Parrott Miss Barbara Parrott Mr. Charles R. Page Mr. Philip P. Paschel Mrs. Oscar Butler Perry Mrs. George A. Pope, Jr. Mrs. Kenneth Pope Mrs. Hugh B. Porter Mrs. M. C. Porter Mr. J. Sheldon Potter Mrs. Jerome V. Powell Mrs. Stanley Powell Mr. and Mrs. Stanley Powell Jr. Mr. Walter G. Preddy Mrs. John Raggio Dr. Ralph Arthur Reynolds Mrs. H. A. Richardson Miss Gertrude Richter Mrs. James W. Roberts Mrs. Arline Miller Rolkin Mr. Robert A. Roos Mrs. Charles W. Rosenbaum Mrs. Angela Wing Roth Mr. F. W. Rubke Mrs. Henry Potter Russell Miss Pauline E. Ryder Miss Virginia Ryder Mr. Marcus L. Samuels Mrs. Karl Schaefer Mr. and Mrs. Carl Schaubey Mrs. Rudolph Schilling Mr. George B. Schirmer Mr. Nat Schmulowitz Mr. Albert Schwabacher Mrs. Carrie Schwabacher Mrs. Louis A. Schwabacher Mrs. Bert C. Scott</p>	<p>Mr. H. S. Scott Mr. and Mrs. Bruce Selfridge Mrs. Richard H. Shainwald Mrs. R. S. Shainwald Mrs. Nelson Towne Shaw Mrs. A. H. Shearer Mrs. Fred R. Sherman Mrs. Francis Shook Mrs. Stauffer Sigall Mrs. Rose Silver Mr. Charles W. Slack Mrs. Leon Sloss, Jr. Mrs. Leon Sloss Mrs. Louis Sloss Judge and Mrs. M. C. Sloss Mrs. Josephine A. Smith Capt. G. W. Somers Mrs. Warren Spieker Mrs. Robert Gordon Sproul Mrs. E. B. Stanwood Mr. and Mrs. B. V. Sturdivant Mrs. John A. Sutro Mrs. Oscar Sutro, Jr. Mr. Louis Sutter Mrs. Alfred B. Swinerton Miss June Tanzer Mrs. F. F. Thomas, Jr. Mrs. Myron I. Thomas Mrs. Miller Thomlinson Miss Barbara B. Thompson Mrs. Joseph Tobin Mr. Ernest J. Torregano Mrs. Nion Tucker Mrs. John R. Upton Mrs. Sidney M. Van Wyck Mr. Paul Verdier Mrs. Daniel Volkmann Mrs. Norman Waggoner Mrs. Ward Walkup Mrs. Clarence R. Walter Mrs. John I. Walter Mrs. Lingan Warren Mrs. Helen B. White Mr. H. G. White Mrs. Millard C. White Mrs. Frederick C. Whitman Mr. Stephen Williams Mrs. Theodore Wores Mrs. Clarence Young Mrs. V. Zaruba Mrs. Harold L. Zellerbach Mr. Edgar T. Zook</p>
----------------------------------------------------------------------------------------------------------------------------------------------------------------------------------------------------------------------------------------------------------------------------------------------------------------------------------------------------------------------------------------------------------------------------------------------------------------------------------------------------------------------------------------------------------------------------------------------------------------------------------------------------------------------------------------------------------------------------------------------------------------------------------------------------------------------------------------------------------------------------------------------------------------------------------------------------------------------------------------------------------------------------------------------------------------------------------------------------------------------------------------------------------------------------------------------------------------------------------------------------------------------------------------------------------------------------------------------------------------------------------	---------------------------------------------------------------------------------------------------------------------------------------------------------------------------------------------------------------------------------------------------------------------------------------------------------------------------------------------------------------------------------------------------------------------------------------------------------------------------------------------------------------------------------------------------------------------------------------------------------------------------------------------------------------------------------------------------------------------------------------------------------------------------------------------------------------------------------------------------------------------------------------------------------------------------------------------------------------------------------------------------------------------------------------------------------------------------------------------------------------------------------------------------------------------------------------------------------------------------------------------------------------------------------------------------------------------------------------------------------------------------------------------------------	------------------------------------------------------------------------------------------------------------------------------------------------------------------------------------------------------------------------------------------------------------------------------------------------------------------------------------------------------------------------------------------------------------------------------------------------------------------------------------------------------------------------------------------------------------------------------------------------------------------------------------------------------------------------------------------------------------------------------------------------------------------------------------------------------------------------------------------------------------------------------------------------------------------------------------------------------------------------------------------------------------------------------------------------------------------------------------------------------------------------------------------------------------------------------------------------------------------------------------------------------------------------------------------------------------------------------------------------------

An Instrument worthy of the Name

"Beyond any shadow of a doubt, it surpasses anything I have heard in regard to tone quality, reliability, and appearance," says DAVID HALL, author of *The Record*

Book, monumental record-collector's reference book. Write for your copy of the unusual brochure: "How to Judge a High Quality Radio-Phonograph."

Philharmonic

RADIO-PHONOGRAPH



*Trade
Mark

Philharmonic Radio Corporation, Dept. 14, 528 East 72nd Street, New York

A TOUCH OF THE OLD WORLD



Dinners at **VENETO**
are a gourmet's delight!

Delicious salads. . . slow-simmered, rich soups
and tender, succulent meats and vegetables

389 BAY AT MASON • GARFIELD 9711

*She is naturally proud
of her beautiful things—*

... Because they reflect good taste,
discrimination and are truly fine examples
of traditional Sloane craftsmanship.

W & J Sloane
SUTTER near GRANT



CONTRIBUTORS TO 1944 SEASON

Amberg-Hirth
 Constant J. Auger
 Baldwin Piano Company
 Blue Network Co., Inc.
 Blum's
 Borden's Dairy Delivery Co.
 Bullock & Jones
 Davis-Schonwasser
 City of Paris
 City Transfer & Storage Co.
 Columbia Concerts, Inc.
 The Emporium
 Julius Eppstein Florists
 Fairmont Hotel
 Fox West Coast Theatres
 Goldstein & Company
 Granat Bros.

Gump's
 Hale Bros.
 Hastings
 Ernest Hirsch
 Hotel St. Francis
 Joseph's Florists
 Carolyn Kelsey
 KJBS
 K. H. Lengfeld
 H. Liebes & Company
 Livingston Bros.
 Carl D. Lovotti
 Mr. & Mrs. Grover A. Magnin
 I. Magnin & Company
 Joseph Magnin
 Maison Mendessolle
 Mark Hopkins Hotel
 Merrill's Drug Center

V. C. Morris
 Musicians' Union, Local No. 6
 National Broadcasting Co.
 O'Connor, Moffatt & Co.
 Palace Hotel
 Pisani Ptg. & Pub. Co.
 Podesta & Baldocchi
 Ransohoffs
 Roos Bros.
 Schneider Bros.
 Sherman, Clay & Company
 Shreve & Company
 Sommer & Kaufmann
 Standard Oil Company
 Weinstein & Company
 The White House
 Yellow Cab Company



World famous personalities, epicures and gourmets acclaim George Mardikian's cuisine. Lamb Shish Kebab with Pilaff — Rolled, stuffed Grape Leaves — Rose Petal Ice Cream!

Dinner and a la carte, cocktails. Open from 4:00 P. M. till midnight.

Every night is celebrity night.

FAMOUS  GEORGE MARDIKIAN at
Omar Khayyam's

O'FARRELL STREET AT POWELL

HOTEL CANTERBURY

750 SUTTER ST. • SAN FRANCISCO

Excellent dining room

This distinguished hotel is convenient to every downtown attraction. Rooms are finely appointed, all with bath.

Madame Arpiné Inayetian

Former Associate Alfred Cortot, Paris

Piano Technique and Interpretation — All Grades

243 - 27TH AVENUE, SAN FRANCISCO • TELEPHONE EVERGREEN 3070

GIFTS *that say "I'm thinking of YOU"*

Orchid Ceramic Pins and Earrings . . . Smocks for House and Victory Garden wear . . . "Good Luck Pixies" — the little figurines that really work wonders. 1000 suggestions.

THE NATALIE SHOP

12 TILLMAN PLACE
 Bet. Sutter & Post Sts.
 Off Grant Avenue . . .
 Phone: DOUGLAS 1502



THE
CLIFT
HOTEL

SAN FRANCISCO



Home of the famous
REDWOOD ROOM

Geary at Taylor



Los Angeles' finest address. Garden
swimming pool and tennis court.

The Town House
LOS ANGELES

Visit

The
New

POWELL'S
Smart Apparel

51 Grant Avenue

A Smart Shop
For Junior Sizes

TICKETS NOW ON SALE

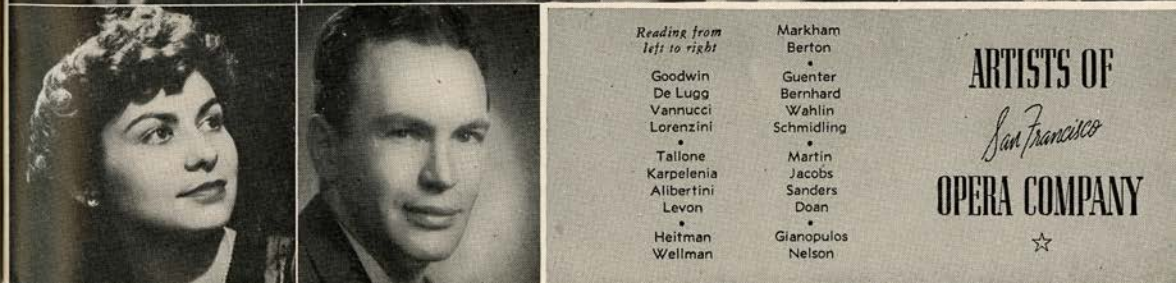
OPENING
OCT. 27

H.M.S. PINAFORE

Presented by

SAVOY OPERA COMPANY

For reservations: Opera Box Office, City
of Paris, or Theatre, ORdway 1109 . . .
Bush Street Music Hall, Bush and Jones
\$3.00, \$2.50, \$2.00 — Tax Included



Reading from
left to right

Goodwin
De Lugg
Vannucci
Lorenzini
•
Tallone
Karpelenia
Alibertini
Levon
•
Heitman
Wellman

Markham
Berton
•
Gunter
Bernhard
Wahlin
Schmidling
•
Martin
Jacobs
Sanders
Doan
•
Gianopoulos
Nelson

ARTISTS OF
San Francisco
OPERA COMPANY



SAN FRANCISCO OPERA GUILD MEMBERS

Addenda

Miss Edith E. Allyne	Mr. and Mrs. Grover A. Magnin	Mr. W. G. Thornton
Miss Lucy H. Allyne	Mrs. Charles O. Martin	Mrs. M. C. Threlkeld
Mr. T. E. Ambrose	Mrs. Howard Meadows	Dr. and Mrs. Harold Trimble
Miss Lillian Armsby	Mrs. Julian J. Meyer	Mrs. John S. Adler
Mrs. Leonora Wood Armsby	Mrs. Earl D. Minton	Mrs. R. M. Alvord
Mrs. Edward F. Barron	Mrs. Hans Nelson	Mrs. Samuel Bauer
Mr. Irving Bartel	Mr. John Francis Neylan	Mr. and Mrs. F. N. Belgrano, Jr.
Mrs. Charles Beardsley	Mrs. William H. Noble	Mrs. George Edwin Bennett
Mr. S. D. Bechtel	Miss Anna C. O'Brien	Mrs. Dikran M. Berberian
Mrs. James Hall Bishop	Mrs. Warren Olney, Jr.	Mrs. E. Bianco
Mr. and Mrs. Charles R. Blyth	Mr. Aram Poladian	Miss Nina Boyle
Mrs. T. J. Brennan	Miss Eva Powell	Mrs. Worthen Bradley
Mrs. B. J. Brun	Mrs. Carl Raiss	Mrs. Cabot Brown
Mrs. Edward J. Buckley	Mrs. William P. Roth	Dr. Edward John Buckley
Mrs. Arthur B. Cahill	Mr. James H. Schwabacher	Mrs. Edna W. Buckwalter
Mrs. John R. Cahill	Mr. R. O. Simon	Mrs. Betty Cohn
Mr. R. A. Cleaveland	Mrs. Ralph J. L. Stern	Mrs. Joseph J. Coney
Mr. Newton Booth Coghill	Mrs. Sigmund Stern	Dr. and Mrs. Frederick C. Cordes
Mr. B. Hardin Corbin	Mr. and Mrs. Jerd Sullivan	Miss Mary Cook Cowerd
Mrs. Emile F. Cuenin	Mr. George C. Thierbach	Mrs. John Jewett Earle
Mrs. Cornelius J. Dall	Mrs. Edward Topham, Jr.	Miss Lucile Eising
Miss Florence Dean	Mrs. James W. Towne	Mrs. Harold E. Faber
Mrs. Frank P. Deering	Mr. Leslie R. Wilson	Mrs. Henry B. Friedrichs
Mrs. R. J. Dietrick	Mrs. Mary E. Wilson	Mrs. Algernon Gibson
Mrs. A. G. Dondero	Miss Barbara Urba Winkler	Mrs. A. H. Goldstone
Mr. Richard E. Doyle	Dr. Dorothy A. Wood	Mrs. Morgan A. Gunst
Miss Margaret L. Ely	Mr. and Mrs. George	Mrs. Abraham Haas
Miss Marian W. Ewes	Washington Baker, Jr.	Mrs. Timothy Hayes
Mr. Lionel B. Feigenbaum	Mr. and Mrs. R. I. Bentley, Jr.	Miss Marian Huntington
Mr. and Mrs. W. Parmer Fuller, Jr.	Mrs. Walter H. Bentley	Dr. Herbert G. Johnstone
Nellie Gaffney	Dr. Walter H. Brown	Mrs. Edward D. Keil
Miss Naida Gilmore	Mrs. Edith DeLee	Mr. Philip N. Lilienthal, Jr.
Mrs. Joseph Grace	Mr. Charles Flammer	Mr. R. L. Litchfield
Mrs. Horace Guittard	Mr. Angelo Fusco	Mrs. Norman Livermore
Mrs. Randolph Hale	Miss Jane Goodfellow	Miss Ann M. Lovejoy
Mrs. William L. Halfpenny	Mrs. D. H. Grubb	Mrs. William Palmer Lucas
Mrs. John Lindsay Hanna	Mrs. Robert Hotle	Miss Marjorie Miller
Mrs. L. W. Harris	Mrs. Walter S. Johnson	Mrs. Joseph A. Moore
Mrs. Elystus Lyon Hayes	Mr. Percy L. King	Dr. W. H. Murphy
Mr. Benjamin H. Hicklin	Mr. A. J. Kirkpatrick	Mrs. John Archibald Newcomb
Mrs. Fentress Hill	Miss Frances Kosta	National Broadcasting Company
Mr. John W. Hopkins	Mrs. A. Lendle	Mrs. A. Leslie Oliver
Mrs. Thomas R. Hughes	Mrs. T. R. McCarron	Mrs. R. F. Paine
Mrs. Elizabeth Jongeneel	Mrs. Randolph W. Martenet	Mrs. Hall Roe
Mrs. T. Henshaw Kelly	Mrs. William H. Nolan	Mr. John N. Rosekrans
Mrs. John B. Knox	Mrs. Ashton Potter	Alice Seckels
Mrs. Lewis H. Lapham	Mr. A. S. Russell	Mrs. Walter Sedgley
Miss Rena Lazelle	Miss Violet V. Schoning	Mrs. George D. Smith
Mr. Felix A. Lenhart	Mr. Frederic R. Sherman	Mr. Jack Soderlund
Miss Elvira LeStrange	Mrs. Henry J. Siegler	Mrs. Powers Symington
Miss Louise Lovell	Mrs. Melville L. Smith	Mrs. Alfred S. Tubbs
Mrs. Decker McAllister	Mrs. Lawrence Strassburger	Mrs. Richard Walker
Mrs. John McGaw		Mr. Michel D. Weill

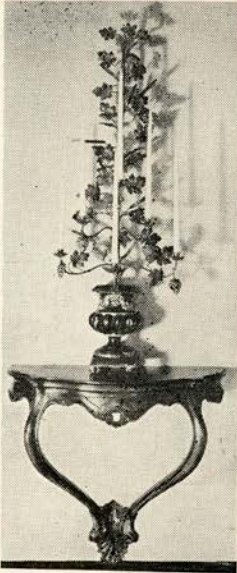
KSFO "560 ON YOUR DIAL"

DEDICATED
IN THE INTEREST OF
PUBLIC SERVICE

STUDIOS "ATOP NOB HILL"

HOTEL MARK HOPKINS

FILL THE WAR CHEST



BUY WAR BONDS

★

Fine Antiques

★

*Excellent
Craftsmanship*

★

K. H. LENGFELD

Interior Decorator

★

1409 SUTTER STREET, SAN FRANCISCO

BELFAST

★

*Manufactured
by the makers
of*

BELFAST
Dry
GINGER ALE

*Famous
Since 1877*

★



*Sparkling
Water*

PURE, wholesome and delightful to the taste, Belfast Sparkling Water is the ideal table beverage...it is *supreme* among the better mixers — heightens the flavor of other beverages and gives longer-lasting sparkle in the glass.

BELFAST BEVERAGE CO.

820 Pacific Avenue

DOuglas 0547

San Francisco

**The 1944
San Francisco
Opera Season**

*is being broadcast by
Safeway Stores*

OVER THE PACIFIC COAST DON LEE-MUTUAL NETWORK

So that you may better enjoy listening to the opera at home Safeway has produced an Opera Broadcast Program. Its 40 pages contain interesting stories of each opera, show pictures of leading artists, and list radio stations and broadcast time of each opera.

*You may obtain your free copy of the Safeway
Broadcast Program in the foyer.*

"In the eyes of the law"

Your Will, to you, may be a very personal matter, close to your heart.

But "in the eyes of the law" a Will is a formal, *legal document*, subject to strict legal interpretation.

Knowing this, a prudent man goes with his plans and purposes to his attorney so his Will can be drawn *in legal terms*; and thereafter reviews it periodically with his attorney to keep its provisions up to date.

By taking these simple precautions, he safeguards the interests of those he is most anxious to protect.

An officer of our Trust Department will be glad to advise with you and your attorney.

TRUST DEPARTMENT

Wells Fargo
Bank & UNION TRUST CO.

SAN FRANCISCO · 20

Market at Montgomery · Market at Grant Ave.

Established 1852

Member F. D. I. C.



FOR YOUR FIGHTING MAN
BUY MORE BONDS

Head and Shoulders
OVER OTHERS

FOR MILDNESS... FOR BETTER TASTE

And as sure as night follows day... Chesterfield's definitely Milder Better Taste is the result of their...

**RIGHT COMBINATION
WORLD'S BEST TOBACCO**

Make these 5 Key-words the key to your Smoking
Pleasure, as they are for millions everywhere.

ASK FOR-

CHESTERFIELD

THURSDAY NIGHT, OCTOBER 26, at 8:00

FALSTAFF

Comic opera in three acts. Music by Giuseppe Verdi.

Text by Boita after "The Merry Wives of Windsor" by Shakespeare.

THE CAST

Sir John Falstaff.....	SALVATORE BACCALONI	
Fenton, a young nobleman.....	BRUNO LANDI	
Ford, a wealthy burgher.....	IVAN PETROFF	
Dr. Caius, a physician.....	JOHN GARRIS	
Bardolph.....	} Followers of Falstaff {ALESSIO DE PAOLIS
Pistol.....	LORENZO ALVARY
Mistress Ford.....	VIVIAN DELLA CHIESA	
Nanette, her daughter.....	LICIA ALBANESE	
Dame Quickly.....	MARGARET HARSHAW	
Mistress Page.....	HERTA GLAZ	
A Page.....	KATHLEEN LAWLOR	
Innkeeper.....	PAUL GUENTER	

Servants of Inn, Servants of Ford

Burghers and Street Folk, Maskers as Elves, Faires, Witches

STAGE DIRECTOR

ARMANDO AGNINI

CONDUCTOR

WILLIAM STEINBERG

CHORUS DIRECTOR

KURT HERBERT ADLER

TIME AND PLACE: Fifteenth Century; Windsor.

Act I: Scene 1: Room at the Garter Inn
Scene 2: Courtyard at Ford's Home

Act II: Scene 1: Same as Act I, Scene 1
Scene 2: Room in Ford's Home

Act III: Scene 1: Same as Act I, Scene 1
Scene 2: Windsor Forest at Night

Settings designed by Armando Agnini and constructed in the studios of the San Francisco Opera Association.

SEATS FOR "CARMEN" AND "CONTES D'HOFFMANN"
ARE AVAILABLE AT OPERA BOX OFFICE, CITY OF PARIS

Encores not permitted — Bell rings three minutes before curtain rises