

Rigoletto


1943

Thursday, October 28, 1943 8:00 PM

SFO\_PUB\_01\_SFO\_1943\_10

Publications Collection

San Francisco Opera Archives



*Season 1943*

*San Francisco*  
**OPERA**  
*Association*

**GAETANO MEROLA**  
*General Director*

**OCTOBER 7 TO OCTOBER 30**  
**WAR MEMORIAL OPERA HOUSE**



*It Stands Alone*

## KORBEL BRUT IS **TOPS** IN AMERICAN CHAMPAGNE

Magazines which reach the most sophisticated audience in the United States unanimously give first place in American Champagnes to KORBEL BRUT  
WE didn't say it first! THEY DID!

"THE BEST AMERICAN CHAMPAGNE to date is KORBEL BRUT 1933. Our guess is anyone would think it was imported." —Harper's Bazaar, February, 1941.

"PROBABLY THE MOST CHAMPAGNE-LIKE domestic wine is KORBEL BRUT 1933." —Cue Magazine, December 28, 1940.

"THE OUTSTANDING AMERICAN CHAMPAGNE to date is KORBEL BRUT 1933." —Town and Country, February, 1941.

"EXTREMELY ENJOYABLE, bone-dry and clean-tasting." —The New Yorker, March 15, 1941.

"AMONG THE FEW FINE CALIFORNIA CHAMPAGNES IS KORBEL BRUT, vintage 1933—a special cuvee which has been made as dry as the driest Champagnes for the English market." —St. Regis, Peacock Alley, The Ambassador, Plaza En Passant, The Savoyard, The Ritz Carlton, The Hampshire, The Sherry-Netherlands, Pierrot, January, 1941.

# KORBEL BRUT

Distributed by

**TRADERS DISTRIBUTING CO.**  
314 FRONT STREET, SAN FRANCISCO, CALIFORNIA



Our **90TH** Year



## 1853 HEP CAT

Juke Box Jason was really "cookin' with octane" when he "cut a rug" in his 1853 Bullock & Jones finery. Today this modern store features Oxford Clothes for men who want the finest *quality* in the best of taste.

OXFORD CLOTHES

# Bullock & Jones

CUSTOM TAILORS · MEN'S WEAR · IMPORTERS  
POST STREET AT UNION SQUARE

WHATEVER YOU BUY—BUY QUALITY

# Pedro Domecq wears a White Tie

No formal dinner party would be right without white ties and formal gowns. Nor would it be quite correct without wine—a glass of fine Amontillado, Domecq's Selecto, with the soup, a table wine with the entree, and a mellow, golden cream Sherry, Domecq's Celebration Cream, with the dessert.

Ask your dealer to show you Pedro Domecq's range of Sherries. Your cellar without a noble Sherry like Domecq would be as incomplete as your wardrobe without evening clothes.

COMEX WINE & SPIRITS, INC.

New York City

San Francisco

Bottled in Jerez, Spain. Alcohol 18 to 20% by volume



---

COCKTAIL BAR IN BASEMENT PROMENADE  
SERVICE ALSO ON DRESS CIRCLE AND MEZZANINE

---

Served at the Opera House BUFFET



GAETANO  
MEROLA

General Director



1923 - 1943

*With this season, the San Francisco Opera Association celebrates the 21st Anniversary of the San Francisco Opera Company.*

*Founded by a small group who had faith in the music appreciation of San Franciscans, the record of the company has more than justified the soundness of that belief. At the season's close, the Company will have given 343 performances of 68 operas.*

*No other city, with the single exception of New York, can cite such an unbroken record in grand opera. And yet, the San Francisco Opera Company no longer belongs to this city alone, but to the entire Pacific Coast. Annually, a number of these cities look forward to being host to the company. All of this, we feel, is a tribute not alone to the artistry and good management of the company, but to the people of San Francisco whose support has made this accomplishment possible.*

*The San Francisco Opera Association is grateful for this support and the untiring efforts and genius of Gaetano Merola, General Director of the Company since its inception.*

SAN FRANCISCO OPERA ASSOCIATION

  
**City of Paris**  
GRAND HOTEL



*Announcing the Autumn Collection*

of

**ORIGINALS**

Exclusive with City of Paris

*G. d'Arman*

THIRD FLOOR



*San Francisco*  
**OPERA ASSOCIATION**



**OFFICERS**

**KENNETH MONTEAGLE**  
PRESIDENT

**MRS. STANLEY POWELL**  
VICE-PRESIDENT

**ARTHUR MERRILL BROWN, JR.**  
VICE-PRESIDENT

**CHARLES R. BLYTH**  
VICE-PRESIDENT

**GEORGE T. CAMERON**  
TREASURER

**EDWARD F. MOFFATT**  
SECRETARY

**BOARD OF DIRECTORS**

GEORGE WASHINGTON BAKER, JR.	TIMOTHY HEALY
CHARLES R. BLYTH	KENNETH MONTEAGLE
ARTHUR MERRILL BROWN, JR.	JOHN FRANCIS NEYLAN
GEORGE T. CAMERON	MRS. STANLEY POWELL
WILLIAM W. CROCKER	MRS. HENRY POTTER RUSSELL
MORTIMER FLEISHHACKER	NION R. TUCKER



**EXECUTIVE STAFF**

**PAUL POSZ**  
BUSINESS MANAGER

**HOWARD G. HANVEY - CURRAN SWINT**  
PUBLICITY

**ARTHUR FRAHM-LALIA DECKER**  
TICKET SALES

**JESSIE KEENE**  
PRODUCTION SECRETARY

**EVELYN CROCKETT-GERALD G. ROSS**  
OFFICE SECRETARIES



*She is naturally proud  
of her beautiful things—*

... Because they reflect good taste,  
discrimination and are truly fine examples  
of traditional Sloane craftsmanship.

*W & J Sloane*  
SUTTER near GRANT





## BOARD OF GOVERNORS

GEORGE WASHINGTON BAKER, JR.	MRS. LAWRENCE W. HARRIS	JOHN FRANCIS NEYLAN
P. A. BERGEROT	J. EMMET HAYDEN	ETTORE PATRIZI
CHARLES R. BLYTH	TIMOTHY HEALY	RALPH L. PHELPS
J. BRENDAN BRADY	EDWARD D. KEIL	MRS. M. C. PORTER
H. SEWALL BRADLEY	CHARLES H. KENDRICK	MRS. STANLEY POWELL
ARTHUR MERRILL BROWN, JR.	MRS. MARCUS S. KOSHLAND	STANLEY POWELL
GUIDO CAGLIERI	LEWIS A. LAPHAM	ANGELO J. ROSSI
MRS. GEORGE T. CAMERON	MRS. STINE LEIS	MRS. HENRY POTTER RUSSELL
GEORGE T. CAMERON	J. B. LEVISON	A. SBARBORD
CHARLES A. CHRISTIN	MISS EDITH LIVERMORE	FRED R. SHERMAN
TEMPLETON CROCKER	M. E. LOMBARDI	PAUL SHOUP
WILLIAM W. CROCKER	MISS RUTH W. LORING	MRS. M. C. SLOSS
GEORGE E. CROTHERS	MISS SALLIE MAYNARD	RALPH J. A. STERN
MISS MARY C. DUNHAM	MRS. C. D. G. MILLER	MRS. SIGMUND STERN
SIDNEY M. EHRMAN	ROBERT W. MILLER	MRS. DAVID ARMSTRONG TAYLOR
MRS. WILLIAM M. FITZHUGH	EDWARD F. MOFFATT	M. C. THRELKELD
MORTIMER FLEISHHACKER	KENNETH MONTEAGLE	NION R. TUCKER
A. P. GIANNINI	GUIDO MUSTO	RANDOLPH C. WALKER
RANDOLPH HALE	MRS. JOHN FRANCIS NEYLAN	WHITNEY WARREN, JR.
REUBEN B. HALE	WILLIAM GLADSTONE MERCHANT	



## WAR MEMORIAL OPERA HOUSE

(OWNED AND OPERATED BY THE CITY AND COUNTY OF SAN FRANCISCO  
THROUGH THE BOARD OF TRUSTEES OF THE WAR MEMORIAL)

### BOARD OF TRUSTEES

CLAUDIUS A. MARCKLEY PRESIDENT	GUIDO J. MUSTO VICE-PRESIDENT	FELIX S. MCGINNIS
SIDNEY M. EHRMAN	DAN. S. HEWITT	HARRY A. MILTON
ALVIN GERLACK	CHARLES B. KLEUPFER	RALPH J. A. STERN
	WALTER A. LEONETTI	JOHN J. SULLIVAN
EDWARD SHARKEY MANAGING DIRECTOR OF THE WAR MEMORIAL		IRA G. THOMPSON SECRETARY TO THE BOARD OF TRUSTEES

BUFFET SERVICE IN BASEMENT PROMENADE AND  
DRESS CIRCLE DURING ALL PERFORMANCES

LIBRETTOS AND OPERA GLASSES IN FOYER · HEAD SETS FOR THE DEAF ARE  
AVAILABLE AT TABLE IN MAIN FOYER · ATTENDANT WILL CONNECT  
WITH SEAT LOCATION UPON REQUEST · FOR LOST AND FOUND  
INFORMATION, INQUIRE AT CHECK ROOM NO. 1  
WILLIAM A. MEADE, DIRECTOR OF HOUSE SERVICE



## AIR RAID PRECAUTIONS

The Opera House is "blacked out" and all facilities have been inspected and approved by Civilian Defense authorities. As an additional factor for your safety, trained Air Raid Wardens are on duty during performances.  
PLEASE OBEY ALL INSTRUCTIONS OF THE AIR RAID WARDENS



# LEARN a new LANGUAGE AT HOME..quickly, easily, correctly by LINGUAPHONE the new way using records and textbooks

Joan Bennett, Hollywood Star,  
uses Linguaphone



*As you listen  
you read... then you speak*

## WITH LINGUAPHONE YOU CAN LEARN

SPANISH	GERMAN
RUSSIAN	ITALIAN
SWEDISH	POLISH
DUTCH	AFRIKAAN
IRISH	CHINESE
JAPANESE	PERSIAN
BENGALI	HINDUSTANI
HEBREW	FINNISH
SYRIAC	ENGLISH
LATIN	FRENCH
ARABIC	

In the privacy of your own home, at relatively small cost, you can master a new language.

The Linguaphone Conversational Course in any language is complete, a full course. You learn not only to speak, but to write, read and to think in another language. For immediate use you will find the Linguaphone method one of the simplest and most practical ways of learning a foreign language.

Record Dept., SHERMAN, CLAY & CO.  
Kearny at Sutter St., San Francisco, Calif.

Without obligation, please give me more information on LINGUAPHONE PHONOGRAPH RECORD LANGUAGE COURSES. I am interested

in studying \_\_\_\_\_ (language)

Name \_\_\_\_\_

Address \_\_\_\_\_

City \_\_\_\_\_ State \_\_\_\_\_

LINGUAPHONE COURSE (complete with records and text) available on terms as low as \$5 a month!  
Linguaphone is exclusive with Sherman, Clay.

# Sherman Clay

SAN FRANCISCO-  
Kearny at Sutter  
2539 Mission  
OAKLAND  
H. C. Capwell's  
4th Floor.—20th,  
Brdwy., Telegraph



# SAN FRANCISCO OPERA COMPANY

GAETANO MEROLA  
GENERAL DIRECTOR

ARMANDO AGNINI  
STAGE AND TECHNICAL DIRECTOR

KURT HERBERT ADLER  
CHORUS DIRECTOR

ETIENNE BARONE  
ASSISTANT STAGE DIRECTOR

WILLAM CHRISTENSEN  
BALLET MASTER



## CONDUCTORS and ASSISTANTS

GAETANO MEROLA  
PIETRO CIMARA  
OTELLO CIRONI  
NAOUM BLINDER  
CONCERT MASTER

SIR THOMAS BEECHAM  
KURT HERBERT ADLER

FAUSTO CLEVA  
ANTONIO DELL'OREFICE  
KARL KRITZ  
JULIUS HAUG  
LIBRARIAN



## ARTISTS

LICIA ALBANESE  
SOPRANO

NICOLAI ALEXANDER  
BARITONE

EVARISTO ALBERTINI  
BARITONE

LORENZO ALVARY  
BASS

SALVATORE BACCALONI  
BASS

KURT BAUM  
TENOR

LELIA CAMBI  
SOPRANO

GEORGE CEHANOVSKY  
BARITONE

ALESSIO DE PADLIS  
TENOR

RANDALL EVANS  
TENOR

JOHN GARRIS  
TENOR

DUSOLINA GIANNINI  
SOPRANO

CHARLES GOODWIN  
BASS

IRMA GONZALES  
SOPRANO

PAUL GUENTER  
BASS

FREDERICK JAGEL  
TENOR

RAOUL JOBIN  
TENOR

CHRISTINE JOHNSON  
CONTRALTO

FLORENCE KIRK  
SOPRANO

CHARLES KULLMAN  
TENOR

BRUNO LANDI  
TENOR

KATHLEEN LAWLOR  
SOPRANO

MAX LORENZINI  
BARITONE

AUGUST LORENZO  
BARITONE

MARY HELEN MARKHAM  
SOPRANO

CARLO MENNUCCI  
TENOR

ZINKA MILANOV  
SOPRANO

FRANCIS OLIVER  
TENOR

VERNA OSBORNE  
SOPRANO

JAN PEERCE  
TENOR

IRRA PETINA  
CONTRALTO

IVAN PETROFF  
BARITONE

EZIO PINZA  
BASS

LILY PONS  
SOPRANO

ROBERTO SILVA  
BASS

JOHN CHARLES THOMAS  
BARITONE

TRUMAN THOMPSON  
BASS

KERSTIN THORBG  
CONTRALTO

FRANCESCO VALENTINO  
BARITONE

THELMA VOTIPKA  
SOPRANO

LEONARD WARREN  
BARITONE

ROBERT WEEDE  
BARITONE

EDWARD WELLMAN  
BARITONE



MUNICIPAL CONCERTS

1943-1944  
THE ART COMMISSION  
Presents

SAN FRANCISCO  
SYMPHONY ORCHESTRA

PIERRE MONTEUX, Conductor

NOVEMBER 24



LEOPOLD STOKOWSKI  
CONDUCTING AN ALL-RUSSIAN PROGRAM

JANUARY 5



LICIA ALBANESE  
PRIMA DONNA, METROPOLITAN OPERA COMPANY

JANUARY 27,  
28, 29, 30 . . .  
FEBRUARY 3,  
4, 5, 6 . . . . .



RUSSIAN BALLET  
10 PERFORMANCES · BALLET THEATRE

FEBRUARY 17



ARTUR RUBINSTEIN  
THE MASTER PIANIST . . . . .  
AND

CARLOS CHAVEZ  
CONDUCTOR MEXICO CITY SYMPHONY

MARCH 23



EZIO PINZA  
THE WORLD'S GREATEST BASSO

MUSIC  
MAINTAINS  
MORALE

MUSIC  
MUST  
GO  
ON!

FIVE STAR SEASON

*Season Tickets Now!*

★SIX EVENTS including opening night of Ballet Theatre and choice of any one other Ballet performance, also the four guest artist concerts  
\$9.90, \$7.50, \$6.00, \$4.40, \$3.30, tax incl. BOX OFFICE Sherman, Clay, SU 1331

## CHORAL ENSEMBLE

### MISSSES

VIOLET AURAND	JEANETTE HOPKINS
JANE BEARD	ORTHELLA HUGHES
BIANCA BRUNI	DORRIS KELL
MARJORIE BURK	RHEA KESSLER
LORRAINE CALCAGNO	LUCILLE KIRTLEY
LELIA CAMBI	KATHLEEN LAWLOR
ELIZABETH CASE	ELIZABETH LEE
EMOGENE CORNWELL	NEVART LEVON
ELEANOR CORYELL	DOROTHY MCINTYRE
EMILY GRIGSBY	MARY HELEN MARKHAM
ELMA HEITMAN	MARY RHETT
ROSE HERSCH	MARY LEE SMITH
HILDA HERZ	CLARAMAE TURNER

### MESSRS.

EVARISTO ALIBERTINI	PAUL GUENTER
GEARY ANDERSON	MAX LORENZINI
NORMAN BAKULICH	AUGUST LORENZO
ALBERT BARRETT	GIULIO MANCINI
ALTON BERNHARD	CARLO MENNUCCI
TONY BERTON	ROBIN NELSON
LOUIS BRAUNSTEIN	FRANCIS OLIVER
GALLIANO DANELUZ	WILLIAM PETERSEN
AMERIGO DEL GRANDE	ALLEN SCHMIDLING
ARTHUR DE MASI	MORTON SCHMIDT
PAUL DE POYSTER	ALBERT VANNUCCI
PHILIP DOAN	EDWIN VANNUCCI
RANDALL EVANS	FRED WAHLEN
JOSEPH GIAMMANCO	EDWARD WELLMAN

DORA DI TAND, ACCOMPANIST



## BALLET

WILLAM CHRISTENSEN, PREMIER DANSEUR

EARL RIGGINS, ASSISTANT BALLET MASTER

### SOLOISTS

MISSSES	MISTER
MATTLYN GEVURTZ	EARL RIGGINS
BETTY PARADES	
BEATRICE TOMPKINS	
LOIS TREADWELL	

### PRINCIPAL DANCERS

MISSSES	MESSRS.
HOPE LINTZ	PETER AITKEN
JYMMIE RIEDEL	JOAQUIN FELSCH
WANNA WILLIAMS	

### CORPS DE BALLET

MISSSES	MISSSES	MISSSES	MESSRS.
JACKIE BURNETT	HELENA HENDERSON	GEORGIA NASSIE	DICK BURGESS
EVELYN COLTRON	NANCY JACOBSON	EDWINA NOBLE	A. GILARDI
BETTY CUNED	GLORIA KNEISS	MARGUERITE PEREGO	ROBERT THORSON
MARCELLA DODGE	JACKIE LA FETRA	VIRGINIA POOLE	
ELIZABETH GIBSON	CAROLYN LA VEAU	JOAN VICKERS	
VERA GOLD	FIALA MRAZ	SALLY WHALEN	



### PROGRAM

PISANI PRINTING & PUBLISHING COMPANY, PUBLISHERS, DESIGNERS AND PRINTERS

COSTUMES AND WIGS BY GOLDSTEIN & CO.

ALEXANDER AGNINI  
Wardrobe Master

INEZ DODSON  
Wardrobe Mistress

SUE MCGOWAN  
Hairdresser

EVERETT MASON  
Chief of Makeup





*Photographic Portrait Study*  
of  
*Brenda Helser*  
BY

*Nicholas Johnston*  
MASTER PHOTOGRAPHER

**427 POST STREET**

SAN FRANCISCO  
Telephone YUkon 2061



# ARTISTS OF San Francisco OPERA COMPANY

*Kullman*

*Pons*

*Allamesi*

*Thomas*



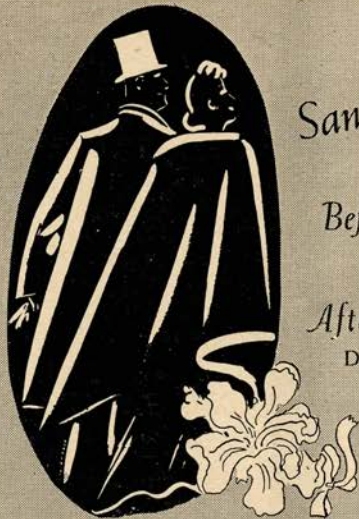
*Warren*

*Putruff*

*De Paolis*

*Valentino*





*San Francisco  
Tradition*

*Before the Opera*

... Dine in the exquisite Garden Court

*After the Opera*

Dance in the Rose Room to the music of

**HENRY BUSSE**  
and his orchestra



# THE PALACE HOTEL

EDMOND A. RIEDER, *General Manager*

SINCE 1888—FIFTY-FIVE YEARS



ORIGINAL STEEL ENGRAVING

FOR CAREFULLY DRESSED MEN  
SHIRTS—PAJAMAS—ROBES

## D. C. HEGER

*Importers and Shirt Makers*

170 SUTTER STREET ☆ SAN FRANCISCO

*In Los Angeles:*

129 SOUTH FAIRFAX

*In Paris:*

12 RUE AMBROISE THOMAS



# Repertoire

## REGULAR SERIES

- SAMSON ET DALILA (*Saint-Saens*) . . . . . *Thursday Night*, October 7, at 8:00  
With Thorborg, Jobin, Warren, Cehanovsky, Alvary, De Paolis, Garris, Wellman.  
MEROLA, Conductor
- LA FORZA DEL DESTINO (*Verdi*) . . . . . *Monday Night*, October 11, at 8:00  
With Milanov, Jagel, Warren, Pinza, Baccaloni, Petina, Votipka, De Paolis, Cehanovsky,  
Alvary, Cambi. MEROLA, Conductor
- CAVALLERIA RUSTICANA (*Mascagni*) . . . . . *Wednesday Night*, October 13, at 8:00  
With Giannini, Kullman, Johnson, Cehanovsky, Votipka. ADLER, Conductor
- I PAGLIACCI (*Leoncavallo*)  
With Albanese, Jobin, Thomas, De Paolis, Valentino, Wellman, Mennucci.  
CIMARA, Conductor
- THE GIRL OF THE GOLDEN WEST (*Puccini*) . . . . . *Friday Night*, October 15, at 8:00  
With Kirk, Jagel, Weede, Johnson, De Paolis, Alvary, Cehanovsky, Garris, Alexander,  
Thompson, Goodwin, Wellman, Evans, Lorenzini, Lourenzo, Oliver. CLEVA, Conductor
- LUCIA DI LAMMERMOOR (*Donizetti*) . . . . . *Monday Night*, October 18, at 8:00  
With Pons, Peerce, Alvary, Votipka, Warren, Evans, Garris. CIMARA, Conductor
- LA BOHEME (*Puccini*) . . . . . *Wednesday Night*, October 20, at 8:00  
With Albanese, Kullman, Osborne, Valentino, Cehanovsky, Pinza, Baccaloni, Alibertini,  
Lorenzini. MEROLA, Conductor
- IL TROVATORE (*Verdi*) . . . . . *Friday Night*, October 22, at 8:00  
With Milanov, Baum, Weede, Thorborg, Silva, Votipka, Garris, Guenter. CLEVA, Conductor
- RIGOLETTO (*Verdi*) . . . . . *Monday Night*, October 25, at 8:00  
With Petroff, Pons, Peerce, Alvary, Johnson, Cehanovsky, Silva, De Paolis, Votipka, Well-  
man, Markham, Lawlor. CIMARA, Conductor
- DON GIOVANNI (*Mozart*) . . . . . *Wednesday Night*, October 27, at 8:00  
With Pinza, Milanov, Kirk, Albanese, Kullman, Baccaloni, Alvary, Silva.  
SIR THOMAS BEECHAM, Conductor
- DON PASQUALE (*Donizetti*) . . . . . *Friday Night*, October 29, at 8:00  
With Baccaloni, Albanese, Landi, Petroff, De Paolis. CIMARA, Conductor



## POPULAR SERIES

- LA TRAVIATA (*Verdi*) . . . . . *Sunday Afternoon*, October 10, at 2:15  
With Albanese, Kullman, Valentino, Cehanovsky, De Paolis, Votipka, Lawlor, Alvary,  
Lorenzini. CLEVA, Conductor
- LA FORZA DEL DESTINO (*Verdi*) . . . . . *Sunday Afternoon*, October 17, at 2:15  
With Milanov, Baum, Warren, Pinza, Baccaloni, Petina, Votipka, Silva, De Paolis, Cehan-  
ovsky, Alvary, Cambi. MEROLA, Conductor
- CARMEN (*Bizet*) . . . . . *Sunday Night*, October 24, at 8:00  
With Petina, Jobin, Gonzales, Pinza, Votipka, Johnson, Alvary, Cehanovsky, De Paolis.  
SIR THOMAS BEECHAM, Conductor
- RIGOLETTO (*Verdi*) . . . . . *Thursday Night*, October 28, at 8:00  
With Thomas, Pons, Peerce, Alvary, Johnson, Cehanovsky, Silva, De Paolis, Votipka, Well-  
man, Markham, Lawlor. CIMARA, Conductor
- CAVALLERIA RUSTICANA (*Mascagni*) . . . . . *Saturday Night*, October 30, at 8:00  
Giannini, Baum, Johnson, Cehanovsky, Votipka. ADLER, Conductor
- I PAGLIACCI (*Leoncavallo*)  
With Albanese, Jobin, Weede, De Paolis, Valentino, Wellman, Mennucci



## EXTRA PERFORMANCES

- THE GIRL OF THE GOLDEN WEST (*Puccini*) . . . . . *Sunday Afternoon*, October 24, at 2:15  
With Kirk, Jagel, Weede, Johnson, De Paolis, Alvary, Cehanovsky, Garris, Alexander,  
Thompson, Goodwin, Wellman, Evans, Lorenzini, Lourenzo, Oliver. CLEVA, Conductor
- SAMSON ET DALILA (*Saint-Saens*) . . . . . *Tuesday Night*, October 26, at 8:00  
With Thorborg, Jobin, Warren, Silva, Alvary, De Paolis, Garris, Cehanovsky.  
MEROLA, Conductor

---

THE EXTRA PERFORMANCES ARE OPERA ASSOCIATION CONCERT ATTRACTIONS





ACME BREWERIES San Francisco • Los Angeles



THURSDAY NIGHT, OCTOBER 28, at 8:00

# Rigoletto

*Saw this & enjoyed it a lot as you can see from the caliber of the cast*

Opera in four acts. Music by Giuseppe Verdi.  
Text by Francesco Maria Piave, founded on Victor Hugo's drama "Le Roi s'Amuse."

## THE CAST

Rigoletto, a hunchback, jester to the Duke.....	JOHN CHARLES THOMAS
Gilda, his daughter.....	LILY PONS
Duke of Mantua, a titled profligate.....	JAN PEERCE
Sparafucile, a hired assassin.....	LORENZO ALVARY
Maddalena, his sister.....	CHRISTINE JOHNSON
Count Monterone.....	GEORGE BURNSON
Count Ceprano.....	EDWARD WELLMAN
Borsa.....	ALESSIO DE PAOLIS
Marullo.....	GEORGE CEHANOVSKY
Countess Ceprano.....	MARY HELEN MARKHAM
Giovanna.....	THELMA VOTIPKA
Page.....	KATHLEEN LAWLOR

*Courtiers, Pages, Servants*

Corps de Ballet



**STAGE DIRECTOR**  
ARMANDO AGNINI

**CONDUCTOR**  
PIETRO CIMARA

**CHORUS DIRECTOR**  
KURT HERBERT ADLER



**TIME AND PLACE:** Sixteenth Century; Mantua and Vicinity

- Act I: Ballroom in the Duke's Palace
- Act II: A Street outside Rigoletto's House
- Act III: Hall in the Duke's Palace
- Act IV: Ruined Inn in a Lonely Spot—Sparafucile's Home

**SEATS FOR ALL REMAINING PERFORMANCES  
AVAILABLE AT SHERMAN, CLAY BOX OFFICE**

*Encores not permitted—Bell rings three minutes before curtain rises*



## The Story of "Rigoletto"

### ACT I

The court of the Duke of Mantua is a place of debauchery. Rigoletto, a hunchback jester, whose biting wit has made him many enemies among the courtiers, panders to the Duke's depravity. The jester has a daughter, Gilda. But knowing so intimately the follies of his time he has kept her in a far quarter of the city to hide her fact and person from his profligate associates. The Duke, however, has seen her several times in church and, disguised as a student, has won her love. The curtain rises on a fête in the palace of the Duke who tells his confidant, Borsa, of the unknown beauty. But charms at hand are not to be overlooked and he courts the Countess Ceprano under the very eyes of her husband. Marullo has discovered Rigoletto's secret but believes Gilda to be his mistress. He plans with the courtiers for her abduction to avenge themselves on the jester. Monterone, who has lost his wife and daughter to the Duke, comes to the fête and pronounces a father's curse on Rigoletto and his master much to the terrification of the hunchback.

### ACT II

Rigoletto hurriedly steals to the house where Gilda is kept secluded. He meets Sparafucile, a professional killer, and promises to bear him in mind should he wish to make away with any enemies. Entering the courtyard of his home, Rigoletto embraces Gilda tenderly and, remembering the curse, commands her never to leave the house. As they talk the Duke, in student's guise, slips into the yard through connivance with Gilda's maid. The Duke and Gilda are exchanging vows following the departure of Rigoletto, when they hear approaching voices and the Duke hurries away. Rigoletto meets the party of courtiers who have come to carry out their plan for the abduction of Gilda. To mislead him they ask his aid in abducting the Countess Ceprano. Rigoletto submits to blindfolding and holds the ladder down which they carry Gilda. Left alone he removes the blind and realizes that he has been duped.

### ACT III

The Duke, having returned to the hunchback's home to find his bird flown, is now back at the palace disconsolate. Informed that Rigoletto's "mistress" has been captured and is in the next room he hastens in to her. Rigoletto enters and, despite pitiable jocular attempts at concealment, breaks down and heartbrokenly admits the abducted girl to be his daughter. The door opens and Gilda rushes into his arms as he vows vengeance on the Duke.

### ACT IV

To prove the Duke's falseness to Gilda who still loves him, Rigoletto takes her to Sparafucile's inn where she hears her lover with Maddalena, the inn-keeper's sister. Heartbroken she goes away with her father to prepare for flight from the city. Rigoletto returns and bargains with Sparafucile for the murder of the Duke. Gilda, beaten back to the inn for shelter from a storm which has arisen, hears Sparafucile promise Maddalena to spare the Duke's life if another person comes to the inn who might be murdered in his stead. Gilda enters, is killed and her body, in a sack, is delivered to Rigoletto.



GUMP'S

SPEED THE COMING OF V-DAY!  
BUY MORE, AND MORE, WAR BONDS



Visit the

O R I E N T

through Gump's Door

PEKIN, Shanghai, Chungking . . . today, names in the war news. Enemy despoilers have looted or ruined countless examples of China's fine arts and crafts. ☆ But other Chinese treasures, fortunately, are safe. Many of these found their way to Gump's before the war. ☆ Here you may still enjoy them . . . articles for the home or for personal wear, from inexpensive utility objects to priceless jade creations . . . all reminders of the patient artistry and timeless tenacity of the Chinese.

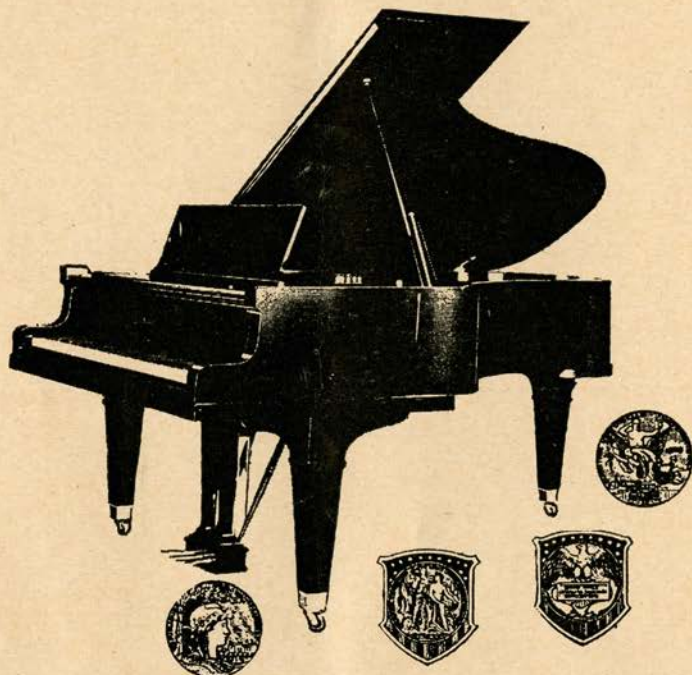
GUMP'S

HONOLULU • SAN FRANCISCO

GLASSWARE • DINNERWARE • SILVERWARE • GIFTS • INTERIOR DECORATION  
PAINTINGS • EUROPEAN AND ORIENTAL ARTS • ORIENTAL BAGS, JEWELRY AND APPAREL



# THE OFFICIAL PIANO *of the* SAN FRANCISCO OPERA COMPANY



*Choose your Piano as the Artists Do*



PONS



MEROLA



BJOERLING



ITURBI

---

## THE BALDWIN PIANO CO.

---

310 SUTTER STREET, SAN FRANCISCO

# BALDWIN

## MASTERS WHO CHOOSE THE BALDWIN

ANTOINE, JOSEPHINE  
ARRAU, CLAUDIO  
AUBERT, ROGER  
BACHAUS, WILHELM  
BAMBOSCHEK, GIUSEPPE  
BARTOK, BELA  
BATTISTA, JOSEPH  
BAUER, HAROLD  
BEECHAM, SIR THOMAS  
BEHREND, JEANNE  
BILLOTI, ANTON  
BIRD, SARI  
BJORLING, JUSSI  
BOGUSLAWSKI, MOISSAYE  
BORI, LUCREZIA  
BOULANGER, NADIA  
BRAZEAU, MARIA THERESA  
BURGIN, RICHARD  
CASELLA, ALFREDO  
CELLA, THEODORE  
CHAMLEE, MARIO  
CHAPPLE, STANLEY  
DAYAS, KARIN  
DE HORVATH, CECILLE  
DE SOLIS, SALITO  
EARLE, DAVID  
EASTON, FLORENCE  
ECHANIZ, JOSE  
EISENBERG, MAURICE  
EISENBERGER, SEVERIN

ERICOURT, DANIEL  
FALDES, ANDOR  
FARREL, FRANK  
FIEDLER, ARTHUR  
FIRKUSKY, RUDA  
FRANCESCATTI, ZINO  
GABOR, ARNOLD  
GASH, EUGENE  
GIESEKING, WALTER  
GIMPEL, JACOB  
GOLDOVSKY, BORIS  
GOLDSAND, ROBERT  
GOLDSCHMAN, BORIS  
GOOSSENS, EUGENE  
HALL, IRMA SCHENUIT  
HERD, STEPHEN  
ITURBI, AMPARO  
ITURBI, JOSE  
JOHNSON, EDWARD  
KEENAN, BREENDAN  
KIPNIS, ALEXANDER  
KITAIN, ANATOLE  
KITAIN, ROBERT  
KOUSSEVITZKY, SERGE  
KOZENN, MARGUERITE  
LABUNSKI, WIKTOR  
LANNER, MAX  
LEOPOLD, RALPH  
LHEVINNE, JOSEF  
LHEVINNE, ROSINA  
LUBOSCHUTZ, PIERRE  
LUBOSHUTZ, LEA  
MASON, EDITH  
MAYRAND, ANNE  
MIROVITCH, ALFRED

MITTMAN, LEOPOLD  
MOORE, GRACE  
MORINI, ERICA  
NEMENOFF, GENIA  
NAEGELE, CHARLES  
NIN-CULMELL, JOAQUIN  
NOSKE, WILLEM  
PAVLOVSKY, VALENTINE  
PERSINGER, LOUIS  
PIATIGORSKY, GREGOR  
PODOLSKY, LEO  
PONS, LILY  
PONSELLE, ROSA  
POSSELT, RUTH  
RAISA, ROSA  
REYES, ANGEL  
RIMINI, GIACOMO  
ROSENTHAL, MORIZ  
SANROMA, JESUS MARIA  
SCHAFMEISTER, HELEN  
SCHIPA, TITO  
SCHMITZ, E. ROBERT  
SCHWALB, MIKLOS  
SCIONTI, ISABEL  
SCIONTI, SYLVIO  
SEGALL, BERNARDO  
SHURE, LEONARD  
SLENCZYNSKI, RUTH  
SMIT, LEO  
STRAWINSKY, IGOR  
SZIGETI, JOSEPH  
TAGLIAFERO, MAGDA  
TANSMAN, ALEXANDER  
TEMPLETON, ALEC  
TRAUBEL, HELEN  
WASSERMAN, JOYCE  
WITTGENSTEIN, PAUL  
WITTGENSTEIN, VICTOR  
WYTHORN, EMERSON  
YAFFE, SAMUEL  
ZACHARA, FRANCISZEK  
ZARDO, ERIC  
BELGIUM PIANO STRING  
QUARTET, THE

VISIT OUR *Record Department*  
ONLY GROUND FLOOR RECORD DEPT. IN THE CITY



1828 WEBSTER STREET, OAKLAND



# SIMI VINEYARD

*Fine* CALIFORNIA WINES



- ★ 1936 SONOMA BURGUNDY
- ★ 1936 SONOMA ZINFANDEL
- ★ 1936 SONOMA CABERNET
- ★ 1936 SONOMA CARIGNAN
- ★ 1936 SONOMA CLARET
- ★ CALIFORNIA DRY SAUTERNE
- ★ CALIFORNIA SWEET SAUTERNE
- ★ CALIFORNIA CHABLIS

## ENDORSED BY HOTEL DEL MONTE

Simi Vineyard wines are wines of prestige quality . . . made with unhurried care in California's most famous wine district . . . to bring a new taste thrill to gracious entertaining. Simi Vineyard wines are the only California wines selected and endorsed by Hotel Del Monte . . . the quality that won three gold medals at the last California State Fair.

SOLE DISTRIBUTORS

**PARROTT & CO., SAN FRANCISCO**

FRIDAY NIGHT, OCTOBER 29, at 8:00

# *Don Pasquale*

Comic Opera in three acts and five scenes.  
Music by Gaetano Donizetti. Text by Salvatore Cammerano.

## THE CAST

Don Pasquale, an old bachelor.....SALVATORE BACCALONI  
Doctor Malatesta, his friend, a physician.....IVAN PETROFF  
Ernesto, nephew of Don Pasquale.....JOHN GARRIS  
Norina, a young widow beloved by Ernesto.....LICIA ALBANESE  
A Notary.....ALESSIO DE PAOLIS

*Citizens, Tradespeople, Servants*



**STAGE DIRECTOR**  
ARMANDO AGNINI

**CONDUCTOR**  
PIETRO CIMARA

**CHORUS DIRECTOR**  
KURT HERBERT ADLER



**TIME AND PLACE:** Beginning of the Nineteenth Century; Rome

Act I: Scene 1: A Room in Don Pasquale's House  
Scene 2: Garden of Norina's House  
Act II: Hall in Don Pasquale's House  
Act III: Scene 1: Same as Act II  
Scene 2: A Garden

SEATS FOR DOUBLE BILL TOMORROW NIGHT  
AVAILABLE AT SHERMAN, CLAY BOX OFFICE

*Encores not permitted—Bell rings three minutes before curtain rises*



## The Story of "Don Pasquale"

### ACT I

Don Pasquale is angry because Ernesto, his somewhat scapegrace nephew, does not wed the woman chosen for him but, instead, becomes enamored with the fascinating young widow, Norina. His friend and physician, Dr. Malatesta, called in for advice, proposes that the uncle be revenged by himself marrying. The Doctor describes a very beautiful girl whom he says is his sister and the old man is elated. Ernesto enters and his uncle urges him to give up the gay widow. He refuses. Don Pasquale then announces that he himself will marry and disinherit him. Ernesto begs his uncle to consult Dr. Malatesta and to his astonishment is told it was the Doctor who proposed the marriage plan. In despair Ernesto writes a farewell note to Norina. (SCENE 2.) Ernesto's note is delivered to Norina as Dr. Malatesta enters. The doctor, revealing his scheme, proposes that she pose as his non-existent sister, go through a mock-marriage, and lead Don Pasquale a merry chase. Persuaded it will lead her to marriage with Ernesto, she consents.

### ACT II

The mock-marriage is performed after the surprised Ernesto has been told of the hoax. When Pasquale signs over half his property to his presumed bride, her demeanor quickly changes. She will not let the bridegroom even kiss her. The nephew laughs at him and is ordered out. Norina flies into a rage. She tells Pasquale that he is too old and fat for a young bride and demands that she have a cavalier. To the amazement of the Don she chooses Ernesto to accompany her on a shopping expedition. She declares herself mistress of the house, engages new servants and purchases an alarming array of costly things. The Don, in a querulous rage, moans that he is ruined.

### ACT III

Furniture and expensive bric-a-brac are piled everywhere. So are the bills. Norina enters dressed for the theatre. The Don tries to detain her but gets his ear boxed. She flounces out and intentionally drops a note which mentions a night rendezvous. The Don reads it and totters out seeking Dr. Malatesta. The Doctor enters with Ernesto, whom he instructs to be in the garden that night. Pasquale returns and the Doctor, pretending to sympathize with him, proposes that they spy upon the guilty pair. The Don gloats over his coming triumph. (SCENE 2.) Ernesto, singing a serenade, is joined by Norina in the garden. They renew their vows in full view of the searching Don and Doctor. The enraged Don rushes to denounce the young people. But Dr. Malatesta reveals the hoax and the old man, glad to be led out of his bargain, sanctions their marriage, to the happiness of all.





Just how  
much *can*  
you do—  
efficiently  
?

Never, as now, have days made so many extra demands upon time and energy. Yet, personal affairs now need closer and more careful attention than ever.

Why run the risks of neglect—the penalties of oversight—the strain of too much to do?

Put your stocks, bonds and other forms of securities under the supervision of our Trust Investment Committee, in an Agency Account. You retain ownership, with as much or as little investment control as you wish. You get Investment management, save time and relieve the strain.

*Head Office: 400 CALIFORNIA STREET  
Mission Branch: 16TH & JULIAN AVE.*

Full details gladly given by any officer of the Bank.

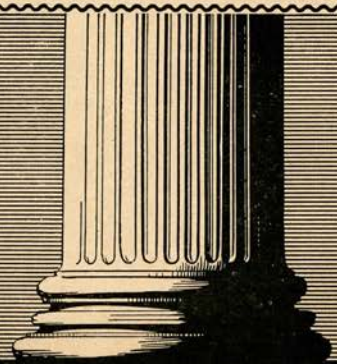
# THE BANK OF CALIFORNIA

FOUNDED IN 1864 • NATIONAL ASSOCIATION

SAN FRANCISCO • PORTLAND • SEATTLE • TACOMA

*Member F. D. I. C.*

*BUY U. S. WAR BONDS & STAMPS*







After the Opera  
THE SMART CROWD  
Gathers in the  
**CIRQUE ROOM**

FOR

*Music in a Lighter Vein with Cocktails and Dancing*

*Fairmont Hotel*

**133 GEARY BLDG.**

Home of Many of San Francisco's Leading Stores

*Still Available*

*a Few Choice Rooms and Suites, Suitable  
for Practitioners, Professional People and  
Up-Stairs Shops of All Kinds.*

**ONE-HALF BLOCK FROM UNION SQUARE GARAGE**

24-Hour Service

Moderate Rent

Bldg. Office: Room 816

Telephone GARfield 8488

# OPERA BOX HOLDERS

Season 1943

MR. AND MRS. C. ROBERT ADAMS	MRS. MARCUS S. KOSHLAND
MR. AND MRS. GEORGE WASHINGTON BAKER, JR.	MR. AND MRS. JUILLIARD McDONALD
MRS. GEORGE EDWIN BENNETT	MR. AND MRS. FREDERICK W. McNEAR
MR. AND MRS. CHARLES R. BLYTH	MR. AND MRS. GAETANO MEROLA
MR. AND MRS. JAMES PARKS BRADLEY	MR. AND MRS. C. O. G. MILLER
MR. AND MRS. JOHN DAVIS BRADLEY	MR. AND MRS. EPPS J. MILLER
MR. AND MRS. ROY BRONSON	MR. AND MRS. KENNETH MONTEAGLE
MR. AND MRS. GEORGE T. CAMERON	MRS. STANHOPE NIXON
MR. AND MRS. WILLIAM W. CROCKER	MRS. GEORGE A. POPE
MRS. FRANK P. DEERING	MRS. ARLINE M. ROLKIN
MR. AND MRS. SIDNEY M. EHRMAN	MAYOR AND MRS. ANGELO J. ROSSI
MR. AND MRS. MORTIMER FLEISHHACKER	SAN FRANCISCO OPERA GUILD
DR. AND MRS. FRANK R. GIRARD	JUDGE AND MRS. M. C. SLOSS
MR. AND MRS. CHARLES L. HARNEY	MRS. SIGMUND STERN
MRS. I. W. HELLMAN	DR. AND MRS. DAVID ARMSTRONG TAYLOR
MR. AND MRS. CLARENCE LORAN JOHNSTON	MR. AND MRS. NION R. TUCKER

## The Zebra Room

atop Nob Hill is not New York  
*but*

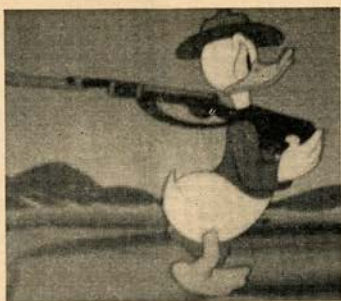
an atmosphere of intimacy is born again  
in San Francisco in the happy environ-  
ments, which surpasses the effete East.

Featuring GEORGE VEACH and the Hammond Organ  
and the  
Songs of MARTHA DEMETER, Continental Chanteuse

**HUNTINGTON APARTMENT HOTEL**

EUGENE N. FRITZ





Copyright Walt Disney Productions—All rights reserved

## AMERICAN WOMEN'S VOLUNTARY SERVICES

through the courtesy of Courvoisier Galleries  
have been granted the privilege of selling

### WALT DISNEY PRINTS

(Originals and Lithographs)

ON SALE AT

422 SUTTER STREET

(AWVS shop in Russian  
War Relief store)

665 MARKET STREET

(San Francisco Unit,  
AWVS)

PRINTS AT 50c EACH • ORIGINALS FROM \$5.00 TO \$35.00

## COLUMBIA CONCERTS, INC.

Presents

### "GREAT NAMES IN MUSIC"



#### *Appearing 1943 San Francisco Opera Season*

SALVATORE BACCALONI  
KURT BAUM  
FLORENCE KIRK  
CHARLES KULLMAN

ZINKA MILANOV  
LILY PONS  
LEONARD WARREN  
ROBERT WEEDE



#### *Appearing San Francisco Opera Concert Series, 1943-1944*

BACCALONI OPERA COMPANY  
BUSCH & SERKIN  
ROBERT CASADESUS  
RICHARD CROOKS  
DRAPER & ADLER  
DON COSSACKS (Platoff)

METROPOLITAN  
QUARTET  
Josephine Tuminia  
Nino Martini  
Igor Gorin  
Helen Olheim

HEIFETZ  
DOROTHY MAYNOR  
YEHUDI MENUHIN  
WILLIAM PRIMROSE  
MIA SLAVENSKA & Dance Group  
HELEN TRAUBEL



#### *Appearing with San Francisco Symphony, 1943-1944 Season*

JOSE ITURBI      ANDRE KOSTELANETZ      JESUS MARIE SANROMA



COLUMBIA CONCERTS, Inc., 113 West 57th Street, New York

California Representative: L. E. BEHYMER

415 Auditorium Building, Los Angeles



ARTISTS OF *San Francisco* OPERA COMPANY



*Gonzales*

*Londe*

*Petina*

*Baum*

*Alvary*

*Osborne*

*Chanovsky* *Volypha*

*Sibra*

*Markham*

*Lawlor*

*Laenzini*

*Garris*

*Alexander*

*Walman*

*Evans*

*Lourenço*

*Albertini*

*Thompson*

*Oliver*

*Gunter*



Concert Division

# SAN FRANCISCO OPERA ASSOCIATION

*announces*

## TWO ALL-STAR OPERA HOUSE CONCERT SERIES

*Make Your Reservations Now*



### *Evening Attractions*

S. F. Opera Company	
<i>Samson et Dalila</i> .....	Oct. 26
Marjorie Lawrence.....	Nov. 10
Ballet Russe.....	Nov. 17
Dorothy Maynor.....	Jan. 13
Jascha Heifetz.....	Feb. 16
Richard Crooks.....	Feb. 22
Robert Casadesu.....	Mar. 13
Baccaloni Opera Company..	Mar. 27

### **Prices Season Tickets**

Orchestra—	
First 20 rows.....	\$18.70
Last 8 rows & Grand Tier..	14.85
Balcony Circle & Balcony.....	7.58

### *Sunday Matinee*

S. F. Opera Company	
<i>Girl of Golden West</i> .....	Oct. 24
Metropolitan Opera Quartet..	Nov. 14
Ballet Russe.....	Nov. 21
Yehudi Menuhin.....	Jan. 2
Busch and Serkin.....	Feb. 6
Baccaloni Opera Company..	Mar. 26
Lawrence Tibbett.....	Apr. 9
Helen Traubel.....	Apr. 16

### **Prices Season Tickets**

Orchestra—	
First 20 rows.....	\$18.70
Last 8 rows & Grand Tier..	14.85
Balcony Circle & Balcony.....	7.58

**GOOD SEATS STILL AVAILABLE**

**Save up to 30% on Season Tickets!**

### **EXTRA ATTRACTIONS OF CONCERT DIVISION**

PLATOFF'S DON COSSACK CHORUS.....	October 31
DRAPER AND ADLER.....	November 6
SLAVENSKA AND DANCE GROUP.....	February 20
DOROTHY CRAWFORD ( <i>Curran Theater</i> ).....	December 12

*Greatest Offering of the San Francisco Opera Association in  
Twenty-one Years. Hear these famous Artists in Concert.*

Opera Box Office, Sherman, Clay • EXbrook 8585

GUARANTOR MEMBERS  
of the  
SAN FRANCISCO OPERA ASSOCIATION

Mr. and Mrs. C. Robert Adams  
Mrs. John S. Adler  
Mrs. Wallace M. Alexander  
Lucy H. Allyne  
Edith W. Allyne  
T. E. Ambrose  
Mr. and Mrs. Frazer A. Bailey  
Mr. & Mrs. George Washington Baker, Jr.  
Mr. and Mrs. Wakefield Baker  
A. R. Baldwin  
B. A. Banker  
Dr. and Mrs. Otto Barkan  
Mrs. Edward F. Barron  
Mr. and Mrs. Irving P. Bartel  
Mrs. Marjorie S. Bates  
Mr. and Mrs. Robert S. Beall  
Mr. and Mrs. F. N. Belgrano, Jr.  
Mr. and Mrs. John Bender  
Mrs. George E. Bennett  
Mrs. Charles H. Bentley  
Florence Bentley  
Mr. and Mrs. Robert I. Bentley  
Mrs. Walter H. Bentley  
Mrs. Annie P. Beusman  
Dr. and Mrs. Tholow Binkley  
Mr. and Mrs. Newton Bissinger  
W. Harry Blatchly  
Mr. and Mrs. Louis Bloch  
Mr. and Mrs. Charles R. Blyth  
Mrs. Angus Gordon Boggs  
Mrs. R. C. Bolton

Mrs. George Bowles  
Louise A. Boyd  
John Davis Bradley  
Mr. and Mrs. Walter C. Brauns  
Mrs. William Ellery Briggs  
Mr. and Mrs. Roy A. Bronson  
Mrs. Julia Fox Brooke  
George W. Brooks  
LeRoy Brooks  
Mr. and Mrs. Arthur M. Brown, Jr.  
Mr. and Mrs. Hillyer Brown  
James A. Brown  
Mrs. Louis C. Brown  
Mr. and Mrs. Ralph Brown  
Mrs. Earl Brownell  
Mr. and Mrs. Starr Bruce  
Mr. and Mrs. Frank E. Buck  
Leonard W. Buck  
Thomas Buck  
Lt. and Mrs. Neil Buckley  
Mr. and Mrs. John R. Cahill  
Dr. William Otis Callaway  
Mr. and Mrs. George T. Cameron  
Estelle Carpenter  
Mrs. Selah Chamberlain  
Mr. and Mrs. Charles A. Christin  
Mrs. Tobin Clark  
Mrs. Warren D. Clark  
Newton B. Coghill  
Mr. and Mrs. John P. Coghlan  
Mrs. Betty Cohn

Mr. and Mrs. George D. Cohn  
Mrs. Max M. Cohn  
Persis H. Coleman  
Mr. and Mrs. H. D. Collier  
Mr. and Mrs. J. J. Coney  
Dr. and Mrs. Frederick C. Cordes  
Arthur S. Crites  
Mr. and Mrs. William W. Crocker  
Judge George E. Crothers  
Mr. and Mrs. R. K. Davies  
Florence E. Dean  
Alvin Davis  
Mrs. Charles J. Deering  
Mrs. Frank P. Deering  
In Memoriam  
Frank P. Deering  
Mrs. Georges de Latour  
Frank H. Denman  
Mr. and Mrs. John Michael Desch  
Mrs. Robert T. Devlin  
Dean Dillman  
Mrs. Samuel L. Dinkelspiel  
Mr. and Mrs. L. W. Dinkelspiel  
Mr. and Mrs. Dewey Donnell  
Katharine Donohoe  
Mrs. F. A. Dorn  
Mrs. Lambert Dunbar  
Mrs. Frances C. Edwards  
Dr. Muriel E. Edwards  
Mr. and Mrs. Albert L. Ehrman  
Mrs. Alfred Ehrman

# FLOWERS

ARE ALWAYS A GRACIOUS AND APPROPRIATE  
GIFT . . . AND ARE ESPECIALLY APPRECIATED  
IF THEY COME FROM . . .

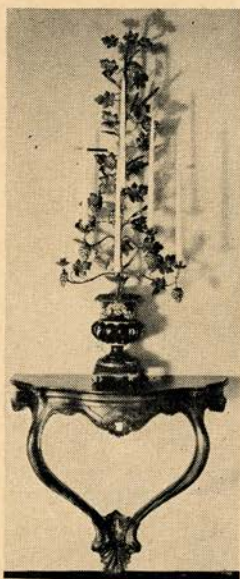
*Podesta & Baldocchi*

America's Most Famous Florists

224 GRANT AVENUE, SAN FRANCISCO

Telephone: SUtter 6200





## BUY WAR BONDS

★

*Fine Antiques*

★

*Excellent  
Craftsmanship*

★

## K. H. LENGFELD

*Interior Decorator*

★

1409 SUTTER STREET, SAN FRANCISCO

Station KGO and the Blue Network Company take pleasure in inviting you to listen to the twentieth anniversary season of Dr. Serge Koussevitzky's conductorship of the Boston Symphony Orchestra, to be heard each Saturday from 5:15 p.m. to 6:15 p.m. over KGO.

We also call your attention to the broadcasts of the Metropolitan Opera, to be heard from 11 a.m. until conclusion, beginning November 27, and to the Metropolitan "Auditions of the Air," to be heard each Sunday at 1:30 p.m. beginning November 28, both over KGO.



### **BLUE NETWORK COMPANY, INCORPORATED**

Radio City, San Francisco  
Graystone 6565

## GUARANTOR MEMBERS — Continued

Mr. and Mrs. Sidney M. Ehrman  
 Mrs. S. W. Ehrman  
 Wilfred Eldred  
 John W. Elwood  
 Mrs. Milton H. Esberg  
 Milton H. Esberg, Jr.  
 Paul I. Fagan  
 Mr. and Mrs. Mortimer Fleishacker  
 John F. Forbes  
 Mr. and Mrs. Edward T. Ford  
 Mrs. Jennie L. Frank  
 William Fries  
 Nelly Gaffney  
 Maurice A. Gale  
 H. Gede, Jr.  
 James P. George  
 D. Lyle Ghirardelli  
 Mrs. Domingo Ghirardelli  
 George B. Gillson  
 Dr. and Mrs. Frank R. Girard  
 James Parks Girard  
 Louis Goldstein  
 Lufie D. Goldstein  
 Celene Goldstein  
 Jack Gomperts  
 Lorraine C. Goodman  
 Mrs. J. D. Grant  
 Mr. and Mrs. Stuart N. Greenberg  
 Gustav Gumpel  
 Madeleine Haas  
 Mr. and Mrs. Marshal Hale  
 Mr. and Mrs. R. B. Hale  
 Prentis Cobb Hale, Jr.  
 Herbert E. Hall  
 Lt. (j/g) Eminel P. Halsted  
 W. F. Hanrahan  
 Mrs. Robert D. Harden  
 W. G. Harmon  
 Mr. and Mrs. Charles L. Harney  
 Maurice E. Harrison

Mrs. Russell P. Hastings  
 Mrs. Elystus Hayes  
 Mrs. Timothy Hayes  
 Arthur W. Hazen  
 Richard Heimann  
 Mrs. E. S. Heller  
 Mr. and Mrs. Walter D. Heller  
 Mr. and Mrs. Walter S. Heller  
 Mrs. I. W. Hellman  
 Mrs. Rudolph G. Henning  
 Mrs. Alfred Hertz  
 Leslie W. Hills  
 Mr. and Mrs. Harry H. Hilp  
 Dr. and Mrs. George H. Holt  
 Osgood Hooker  
 Harold G. Howard, U.S.N.R.  
 Marian P. Huntington  
 Mrs. James Irvine  
 Dr. S. Nicholas Jacobs  
 Louis M. Jefferys  
 Mr. and Mrs. Clarence Lorán Johnston  
 Mrs. Ira Kahn  
 Mr. and Mrs. Henry J. Kaiser  
 Mr. and Mrs. Edward D. Keil  
 H. C. Kelsey  
 Mr. and Mrs. Charles Kendrick  
 Percy L. King  
 R. W. Kinney  
 Mrs. Josephine R. Kleinjung  
 Mrs. William E. Kleinsorge  
 Mrs. Samuel Knight  
 Marion H. Kohn  
 Caroline Korbel  
 Elsa R. Korbel  
 Mrs. Jesse Koshland  
 Mrs. Marcus S. Koshland  
 Frederick J. Koster  
 Mr. and Mrs. Edwin V. Krick  
 Esther Kuenz  
 Gus Kroesen

Mrs. Albert George Lang  
 Mrs. Philip V. H. Lansdale  
 Mrs. Charles G. Lathrop  
 John R. Lesoine  
 J. B. Levison  
 Clarence R. Lindner  
 Mr. and Mrs. Samuel Lilienthal  
 William J. Lindenberger  
 F. L. Lipman  
 Mr. and Mrs. N. B. Livermore  
 Mr. and Mrs. James K. Lohead  
 Mrs. A. J. Lowrey  
 Mr. and Mrs. Louis R. Lurie  
 Mr. and Mrs. Edmunds Lyman  
 Mr. and Mrs. James W. McAlister  
 Mr. and Mrs. A. M. McCarty  
 Mrs. William H. McCormick  
 Mr. and Mrs. Julliard McDonald  
 Mrs. Mark L. McDonald  
 Mr. and Mrs. Felix S. McGinnis  
 Campbell McGregor  
 Mr. and Mrs. Frederick W. McNear  
 Mrs. George P. McNear  
 Graeme K. MacDonald  
 Peter Macris  
 Mr. and Mrs. Grover A. Magnin  
 Mrs. J. W. Mailliard, Jr.  
 Mr. & Mrs. Randolph W. Martenet  
 Mr. and Mrs. George D. Mardikian  
 Mr. and Mrs. A. C. Mattei  
 Evelyn Mendessole  
 Mr. and Mrs. Gaetano Merola  
 Mrs. H. C. Merritt, Jr.  
 Mrs. George H. C. Meyer  
 C. F. Michaels  
 Mr. and Mrs. C. O. G. Miller  
 Mr. and Mrs. Epps J. Miller  
 Col. and Mrs. Robert Watt Miller  
 Mr. and Mrs. Edward F. Moffatt  
 James K. Moffitt

# BELFAST

★  
 Manufactured  
 by the makers  
 of  
**BELFAST**  
 Dry  
**GINGER ALE**

Famous  
 Since 1877



## Sparkling Water

**P**URE, wholesome and delightful to the taste, Belfast Sparkling Water is the ideal table beverage... it is *supreme* among the better mixers — heightens the flavor of other beverages and gives longer-lasting sparkle in the glass.

**BELFAST BEVERAGE CO.**  
 820 Pacific Avenue      DOuglas 0547      San Francisco





## QUALITY INEXORABLE

Today, as for so many years past, Blum's Candies, Pastries, Ice Creams and Frozen Puddings represent the very finest confectionery merchandise that can be purchased at any price.

**CONFECTAURANT SERVICE**  
**9:30 A. M. UNTIL MIDNIGHT**  
**DAILY EXCEPT SUNDAYS**

**Blum's**  
**POLK AT CALIFORNIA**

# MONROE- ANDREW

*A*

*Distinctive Men's Shop*

**British Woolens**  
**Gentlemen's Furnishings**  
**Hats—Sportswear**

*Custom Tailors to Ladies*  
*and Gentlemen*

**386 POST STREET**  
**Opposite the New Union Square**  
**Garage**



Los Angeles' finest address. Garden  
swimming pool and tennis court.

**The Town House**  
**LOS ANGELES**



*As seen in Vogue*

THROUGHOUT AMERICA...leading jewelers recognize the individuality of Granat Mountings by entrusting the most costly diamonds and other precious gems to their guardianship. We invite your inspection of these renowned Mountings, complete with Granat selected and approved stones.

AMERICA'S LARGEST MANUFACTURING RETAIL JEWELERS

**Granat Bros**  
*SHREVE TREAT & EACRET*



## GUARANTOR MEMBERS — Continued

Mr. and Mrs. Kenneth Monteagle  
 Mr. and Mrs. Paige Monteagle  
 F. H. Montgomery  
 Mr. and Mrs. George G. Montgomery  
 Ethel M. Moore  
 Mrs. Joseph A. Moore  
 Guido Musto  
 Laura Musto  
 Mr. and Mrs. A. E. Nelson  
 Mr. and Mrs. Ralph R. Nelson  
 Julia M. Neppert  
 Hugo D. Newhouse  
 Mrs. Alfred Newman  
 Mr. and Mrs. John Francis Neylan  
 J. Leroy Nickel, Jr.  
 Mrs. Stanhope Nixon  
 Mrs. Mary L. Obujen  
 Benjamin J. Older  
 Mrs. Selby Oppenheimer  
 Mr. and Mrs. Charles R. Page  
 Mrs. S. H. Palmer  
 Mrs. Henry Passow  
 Dr. Sadie D. Patek  
 Peninsula Box Office  
 Mrs. Grattan D. Phillips  
 Mrs. Herman Phleger  
 Mr. and Mrs. G. Pisani  
 Aram Poladian  
 Mrs. George A. Pope  
 Mrs. Paul Posz  
 Mrs. Ashton Potter  
 Mrs. Henry Potter Russell  
 J. Sheldon Potter  
 Mr. and Mrs. Stanley Powell  
 Mrs. Carl Raiss

A. S. Rees  
 Dr. Ralph A. Reynolds  
 Mrs. Arline Miller Rolkin  
 Col. and Mrs. Robert A. Roos  
 Mr. and Mrs. John N. Rosekrans  
 Leland S. Rosener  
 Mrs. Angela Wing Roth  
 Mrs. William P. Roth  
 Horace H. Scales  
 Mr. and Mrs. Carl Schaubey  
 Else Schilling  
 Dr. Walter Schilling  
 George B. Schirmer  
 Albert Schwabacher  
 Mrs. Frank Schwabacher  
 James H. Schwabacher  
 Mrs. Louis A. Schwabacher  
 Harry S. Scott  
 Don Searle  
 R. H. Shainwald  
 R. S. Shainwald  
 Frederic R. Sherman  
 E. J. Shimoff  
 Mrs. N. J. Sinclair  
 Mrs. Edgar Sinton  
 Charles W. Slack  
 Mrs. Leon Sloss  
 Judge and Mrs. M. C. Sloss  
 Stanley C. Smallwood  
 Mr. and Mrs. Charles Watt Smith  
 Capt. George Willard Somers  
 Mrs. G. M. Standifer  
 Mrs. Edward B. Stanwood  
 Mr. and Mrs. Ralph J. A. Stern  
 Mrs. Sigmund Stern

William W. Stout  
 Dr. John Philip Strickler  
 Bertram V. Sturdivant  
 Mr. and Mrs. Walter H. Sullivan  
 Mr. and Mrs. Alfred Sutro  
 Louis Sutter  
 John G. Sutton  
 Mrs. David Armstrong Taylor  
 George C. Thierbach  
 Mr. and Mrs. Myron I. Thomas  
 Mr. and Mrs. Morley Thompson  
 William Timson  
 Mr. and Mrs. C. R. Tobin  
 Mr. and Mrs. Ernest J. Torregano  
 Mrs. Alfred S. Tubbs  
 Mr. and Mrs. Nion Tucker  
 J. Richard Van Reekum  
 Mr. and Mrs. Reginald L. Vaughan  
 Mr. and Mrs. Daniel Volkmann  
 Mr. and Mrs. George Wagner  
 Lingan A. Warren  
 Whitney Warren, Jr.  
 Dr. Alanson Weeks  
 Mr. and Mrs. Michel D. Weill  
 Mrs. Millard C. White  
 Mr. and Mrs. Frederick C. Whitman  
 Vincent Whitney  
 Robert L. Wiel  
 Brayton Wilbur  
 Stephen Williams  
 Mrs. J. L. Wolf  
 Mrs. Clinton E. Worden  
 Mr. and Mrs. F. A. Zane  
 Mrs. V. Zaruba  
 Mr. and Mrs. J. D. Zellerbach

### Madam Arpiné Inayetian

Former Associate Alfred Cortot, Paris

*Piano Technique and Interpretation—All Grades*

243 - 27TH AVENUE, SAN FRANCISCO • TELEPHONE EVERGREEN 3070

### SAN FRANCISCO'S Newest and Smartest SUPPER CLUB

**COMPLETE DINNERS  
 COCKTAILS • DANCING**



*Enjoy Your Cocktails in Our  
 "Flame Room"; Around the  
 Open Four - Way Fireplace.*



**3565 GEARY BOULEVARD  
 SAN FRANCISCO**

JOSEPH W.M. FERRARA, Catering Manager

#### CITY TRANSFER CO.

SERVES SAN FRANCISCO OPERA CO.

**WHY NOT YOU?**

MOVING - STORAGE - SHIPPING  
 162 TURK STREET      PRospect 3060

#### HANCOCK BROS.

ROLL AND RESERVED SEAT TICKETS



25 JESSIE STREET      DOuglas 2191  
 San Francisco, California



*After the Opera*  
**REDWOOD ROOM**  
 at the *Clift*

*Cardinal Room*  
 AT THE  
**ALEXANDER HAMILTON**

*El Prado*  
 AT THE **PLAZA**

Operated by Allied  
 Hotels and Apartments

---

**MODERN**

*Unusual Gifts  
 of  
 Glassware  
 Costume Jewelry*

**The Gift Box**  
 277 POST STREET

**Antiques**

*Outstanding Values  
 in  
 Porcelains  
 and*

---

**SILVER**

---

*Aristocratic* **BRAZILIAN COFFEE**



*Finest Quality*  
**IS OFFERED YOU  
 BY**

**THOS. L. PAPPAS**  
 GRANT MARKET • 743 MARKET STREET

**DOWNTOWN BOWL**

*Tops in Bowling Luxury*  
 WITH 40 LANES

The Downtown Bowl is one of the recreation highlights of San Francisco—  
 every detail is in the newest and finest appointments of the day.

**OPEN  
 24 HOURS  
 DAILY**

**FOUNTAIN LUNCH  
 COCKTAIL LOUNGE**

**HENRY M. GOLOBIC, Proprietor**

**EDDY AND JONES STREETS  
 SAN FRANCISCO, CALIF.**

*ORdway 6977*

# SAN FRANCISCO OPERA GUILD, INC.

MRS. ROGER D. LAPHAM, JR., *Chairman*

MRS. JOHN PHILLIP COGHLAN, JR., *Vice-Chairman*

MRS. FREDERICK WHITMAN, *Secretary*

MRS. STANLEY POWELL, *Vice-Chairman*

JERD SULLIVAN, *Treasurer*

## Members

Ackerman, Mrs. Lloyd S.  
 Adler, Mrs. John S.  
 Albert, Mrs. Alexander  
 Alexander, Mrs. Wallace M.  
 Alvord, Mrs. R. M.  
 Anderson, Mrs. Berrien  
 Andrews, Miss Margaret  
 Bacon, Mrs. Edward R.  
 Barron, Mrs. Edward F.  
 Barthold, Mrs. R. M.  
 Bartlett, Mrs. Edward Otis  
 Bauer, Mrs. Samuel  
 Beardsley, Mrs. Charles  
 Beek, Mrs. Julian Palmer  
 Belden, Lee  
 Benfield, A. M.  
 Bennett, Mrs. George Edwin  
 Benoist, Mrs. G. Grace  
 Bentley, Mrs. Charles  
 Bentley, Miss Florence  
 Bentley, Mr. and Mrs. R. I., Jr.  
 Bentley, Mrs. Walter H.  
 Bentley, Mrs. Whitney  
 Benton, Miss Jessie E.  
 Binkley, Dr. and Mrs. Tholow  
 Black, Mrs. Charles N.  
 Blair, Miss Jennie M.  
 Bliss, Miss Phyllis  
 Block, Louis  
 Bloch, Miss Ruth V.  
 Boardman, Mrs. Walter W.  
 Boggs, Mrs. Angus Gordon  
 Boyd, Miss Louise A.  
 Brandenstein, Mrs. M. J.  
 Bradley, H. Sewall  
 Bradley, Mr. and Mrs. James Parks  
 Bradley, Mr. and Mrs. John D.  
 Bransten, Mrs. Edward  
 Brauns, Mrs. W. C.  
 Bray, Mrs. A. F.

Breeden, Mrs. John N.  
 Brodt, Miss Bogardus  
 Brooke, Mrs. Julia Fox  
 Brown, Arthur M., Jr.  
 Brown, Mrs. Hillyer  
 Brown, Mrs. Walter D.  
 Bruce, Mrs. Starr  
 Bruce, Starr  
 Buckley, Lieut. and Mrs. Neil  
 Buckwalter, Mrs. Edna W.  
 Burroughs, Mrs. Robert B.  
 Cameron, George T.  
 Carpenter, Russell  
 Chickering, Mrs. A. L.  
 Chidester, Drew  
 Chipman, Mrs. W. F.  
 Clare, Madame  
 Clark, Mrs. Tobin  
 Clayburgh, Mrs. Leo J.  
 Coghill, Newton Booth  
 Coghlan, Mrs. John P.  
 Coghlan, Mrs. John Phillip, Jr.  
 Coghlan, John P.  
 Cohn, Mrs. Betty  
 Cohn, Mrs. Max M.  
 Coleman, Miss Persis H.  
 Collier, H. D.  
 Colman, Mrs. Jesse C.  
 Coney, Joseph J.  
 Conlin, Miss Mary R.  
 Cope, Mrs. W. B.  
 Cordes, Dr. and Mrs. Frederick C.  
 Courtney, Miss Tim  
 Cowerd, Miss Mary  
 Crocker, Templeton  
 Crocker, William W.  
 Crothers, Judge George E.  
 Crummey, Mrs. John D.  
 Cushing, Mrs. O. K.  
 Davis, Mrs. John F.

Deering, Mrs. Charles J.  
 deFremery, Mrs. Adolph  
 deLatour, Mrs. Georges  
 Desch, Mr. and Mrs. John Miche  
 Dinkelspiel, Mrs. Lloyd W.  
 Dinkelspiel, Mrs. Samuel L.  
 Dixon, Miss Suzanna  
 Donnell, Mr. and Mrs. Dewey  
 Donohoe, Miss Katherine  
 Dorst, Mrs. Warrington  
 Downing, Mrs. Paul M.  
 Dray, Mrs. Frank R.  
 Dunbar, Mrs. Lambert  
 Dunphy, Mrs. Charles  
 Dutton, Mrs. Grayson  
 Edwards, Dr. Muriel E.  
 Ehrlich, Phillip  
 Ehrman, Mrs. Sidney  
 Esberg, Mrs. Milton H.  
 Fagan, Paul I.  
 Field, Mrs. J. K.  
 Filer, Mrs. Walter  
 Fisher, Mrs. Marshall  
 Fitzhugh, Mrs. William M.  
 Fleishhacker, Mrs. Herbert, Jr.  
 Fleishhacker, Mrs. Mortimer, Jr.  
 Flood, Mrs. George  
 Flood, Mrs. James L.  
 Floyd, Mrs. B. C.  
 Forbes, Mrs. John F.  
 Ford, Mrs. Bernard W.  
 Ford, Mr. and Mrs. Edward T.  
 Fuller, Mrs. W. Parmer, Jr.  
 Gantner, Mrs. John O.  
 Ghirardelli, Mrs. Alfred  
 Ghirardelli, Mrs. Domingo  
 Ghirardelli, D. Lyle  
 Gibson, Dr. and Mrs. Thomas A.  
 Gillsen, George B.  
 Girard, Mrs. Frank



## ILKA CHASE SAYS—

"The lyricism of your food may even eclipse poor Shakespeare."

World famous personalities, epicures and gourmets acclaim George Mardikian's

cuisine. Lamb Shish Kebab with Pilaff —Rolled, stuffed Grape Leaves—Rose Petal Ice Cream!

Dinner and a la carte, cocktails. Open from 4:00 P.M. till midnight.

FAMOUS  GEORGE MARDIKIAN at  
*Omar Khayyam's*  
 O'FARRELL STREET AT POWELL



## CONTRIBUTORS TO 1943 SEASON

- |                                    |                                      |
|------------------------------------|--------------------------------------|
| Baldwin Piano Company              | Livingston Bros.                     |
| Blum's                             | I. Magnin & Company                  |
| Borden's Dairy Delivery Company    | Joseph Magnin Company                |
| Bullock & Jones                    | Mr. and Mrs. Grover Magnin           |
| Carolyn Kelsey                     | Maison Mendessolle                   |
| City of Paris                      | V. C. Morris                         |
| City Transfer & Storage Company    | Musicians' Union                     |
| Columbia Concerts Inc.             | National Broadcasting Co.            |
| Constant J. Auger, Jeweler         | O'Connor, Moffatt & Company          |
| H. S. Crocker Company, Inc.        | Palace Hotel                         |
| Davis-Schonwasser                  | Pisani Printing & Publishing Company |
| Julius Eppstein                    | Podesta & Baldocchi                  |
| Fairmont Hotel                     | Ransohoffs                           |
| Goldstein and Company              | Roos Bros.                           |
| Granat Bros.                       | Schneider Bros., Furrier             |
| Gump's                             | Sherman, Clay & Company              |
| Hale Bros., Inc.                   | Shreve & Company                     |
| Hastings                           | Sommer & Kaufmann                    |
| Hotel Mark Hopkins                 | Standard Oil Company                 |
| Hotel St. Francis                  | The Emporium                         |
| Joseph's                           | The White House                      |
| KGO Blue Network                   | Yellow Cab Co.                       |
| KJBS—Julius Brunton & Sons Company | Weinstein Company, Inc.              |
| H. Liebes & Company                |                                      |

# VANESSI'S

498 BROADWAY

## OPERA GUILD MEMBERS — *Continued*

- |                                                                                                                                                                                                                                                                                                                                                                                                                                                                                                                                                                                                                                                                                                                                                                                                                                                                                                                                                                                                                                                                                                                                                                                                                                                                                                                                                           |                                                                                                                                                                                                                                                                                                                                                                                                                                                                                                                                                                                                                                                                                                                                                                                                                                                                                                                                                                                                                                                                                                                                                                                                                                                                                                                                                                                         |                                                                                                                                                                                                                                                                                                                                                                                                                                                                                                                                                                                                                                                                                                                                                                                                                                                                                                                                                                                                                                                                                                                                                                                                                                                                                                                                                                                                                                  |
|-----------------------------------------------------------------------------------------------------------------------------------------------------------------------------------------------------------------------------------------------------------------------------------------------------------------------------------------------------------------------------------------------------------------------------------------------------------------------------------------------------------------------------------------------------------------------------------------------------------------------------------------------------------------------------------------------------------------------------------------------------------------------------------------------------------------------------------------------------------------------------------------------------------------------------------------------------------------------------------------------------------------------------------------------------------------------------------------------------------------------------------------------------------------------------------------------------------------------------------------------------------------------------------------------------------------------------------------------------------|-----------------------------------------------------------------------------------------------------------------------------------------------------------------------------------------------------------------------------------------------------------------------------------------------------------------------------------------------------------------------------------------------------------------------------------------------------------------------------------------------------------------------------------------------------------------------------------------------------------------------------------------------------------------------------------------------------------------------------------------------------------------------------------------------------------------------------------------------------------------------------------------------------------------------------------------------------------------------------------------------------------------------------------------------------------------------------------------------------------------------------------------------------------------------------------------------------------------------------------------------------------------------------------------------------------------------------------------------------------------------------------------|----------------------------------------------------------------------------------------------------------------------------------------------------------------------------------------------------------------------------------------------------------------------------------------------------------------------------------------------------------------------------------------------------------------------------------------------------------------------------------------------------------------------------------------------------------------------------------------------------------------------------------------------------------------------------------------------------------------------------------------------------------------------------------------------------------------------------------------------------------------------------------------------------------------------------------------------------------------------------------------------------------------------------------------------------------------------------------------------------------------------------------------------------------------------------------------------------------------------------------------------------------------------------------------------------------------------------------------------------------------------------------------------------------------------------------|
| <p>Gittings, Mrs. Harry F., Jr.<br/>         Glide, Mrs. J. H.<br/>         Goldstein, Miss Lutie<br/>         Gomperts, Jack<br/>         Goodfellow, Miss Jane<br/>         Goodman, Miss Lorraine C.<br/>         Grace, Mrs. Joseph<br/>         Graham, Mrs. James<br/>         Grant, Mrs. Joseph D.<br/>         Grant, Mrs. Spencer<br/>         Gray, Mrs. Horace<br/>         Gray, Mrs. W. J.<br/>         Greenbaum, Emil<br/>         Greenberg, Mr. and Mrs. Stuart N.<br/>         Guittard, Mrs. Horace<br/>         Gumpel, Mrs. Gustav<br/>         Gunst, Mrs. Morgan A.<br/>         Haas, Miss Rhoda<br/>         Haas, Mrs. Alexander<br/>         Haas, Mrs. Walter, A., Jr.<br/>         Hale, Marshall<br/>         Hale, Mrs. Randolph<br/>         Hale, R. B.<br/>         Hanna, Mrs. John Lindsay<br/>         Hanna, Mrs. Richard J.<br/>         Harden, Mrs. Robert D.<br/>         Harney Mrs. Charles L.<br/>         Harris, Mrs. L. W.<br/>         Hastings, Mrs. Russell<br/>         Hayes, Mrs. Timothy<br/>         Hazen, A. W.<br/>         Heimann, Mrs. Richard<br/>         Heimann, Richard<br/>         Heller, Mrs. E. S.<br/>         Heller, Walter D.<br/>         Heller, Walter S.<br/>         Henderson, Mrs. Wellington S.<br/>         Herrmann, Gerald F.<br/>         Hertz, Mrs. Alfred</p> | <p>Hewlett, Mrs. A. W.<br/>         Hill, Mrs. Fentress<br/>         Hill, Mrs. Harold<br/>         Hili, Mrs. Harry<br/>         Hilp, Mr. and Mrs. Harry H.<br/>         Hockenbeamer, Mrs. A. F.<br/>         Hoffman, Mrs. Clifford P.<br/>         Hooker, Mrs. Osgood<br/>         Hotle, Mrs. Robert<br/>         Howe, Mrs. Thomas Carr, Jr.<br/>         Huntington, Miss Marian P.<br/>         Hutchins, Mrs. John Power<br/>         Irvine, Mrs. James<br/>         Jackman, Mrs. James<br/>         Johnson, Harold I.<br/>         Johnson, Mrs. Walter S.<br/>         Johnston, Mrs. Clarence Loran<br/>         Kahn, Miss Patricia<br/>         Kaiser, Henry J.<br/>         Keator, Mrs. Benjamin<br/>         Keenan, Mrs. Charles J.<br/>         Keil, Mrs. Edward<br/>         Kelly, Mrs. T. Henshaw<br/>         Kendrick, Charles<br/>         Kieffer, Mrs. Donald<br/>         Kiersted, Mrs. Henry S.<br/>         Kleinjung, Mrs. J. R.<br/>         Knight, Mrs. Samuel<br/>         Knox, Mrs. John B.<br/>         Korbel, Miss Caroline<br/>         Koshland, Mrs. Abraham<br/>         Koshland, Mrs. Daniel<br/>         Koster, Frederick J.<br/>         Koshland, Mrs. Marcus S.<br/>         Kroesen, Gus<br/>         Kuechler, Mrs. H. N., Jr.<br/>         Kuenz, Esther<br/>         Laird, Mrs. Lee<br/>         Lamont, Mrs. Breck</p> | <p>Lang, Mrs. Albert George<br/>         Lapham, Mrs. Roger D.<br/>         Lapham, Mrs. Roger D., Jr.<br/>         Lathrop, Mrs. Charles G.<br/>         Lauridsen, Mrs. T. M.<br/>         Lazard, Mrs. Claude<br/>         Lazelle, Miss Rena<br/>         Legg, Miss Fidella<br/>         Lengfeld, Mrs. Louis<br/>         Lesoine, John A.<br/>         Lester, Albert<br/>         Levy, Miss Anne Louise<br/>         Lewis, Mrs. Azro N.<br/>         Liebes, Mrs. Sidney<br/>         Lilienthal, Frances Marie<br/>         Lipman, F. L.<br/>         Livermore, Miss Edith<br/>         Livermore, Mrs. Norman<br/>         Livingston, Mrs. Carl<br/>         Lochead, Mr. and Mrs. James K.<br/>         Logan, Mrs. John<br/>         London, Mrs. Dan E.<br/>         Lucas, Mrs. William Palmer<br/>         McAllister, Mrs. Decker<br/>         McBean, Mrs. Atholl<br/>         McCarty, Mr. and Mrs. A. M.<br/>         McCormick, Mrs. W. H.<br/>         McLaughlin, Mrs. D. E.<br/>         McNear, Mrs. George P.<br/>         Mailliard, Mrs. Thomas P.<br/>         Mann, Mrs. George M.<br/>         Martin, Mrs. Charles O.<br/>         Mayer, Mrs. Charles<br/>         Mendesolle, Miss Evelyn<br/>         Merchant, Mrs. William G.<br/>         Merillion, Mrs. R. P.<br/>         Merola, Mr. and Mrs. Gaetano<br/>         Merritt, Mrs. H. C., Jr.<br/>         Metcalf, Mrs. John B.</p> |
|-----------------------------------------------------------------------------------------------------------------------------------------------------------------------------------------------------------------------------------------------------------------------------------------------------------------------------------------------------------------------------------------------------------------------------------------------------------------------------------------------------------------------------------------------------------------------------------------------------------------------------------------------------------------------------------------------------------------------------------------------------------------------------------------------------------------------------------------------------------------------------------------------------------------------------------------------------------------------------------------------------------------------------------------------------------------------------------------------------------------------------------------------------------------------------------------------------------------------------------------------------------------------------------------------------------------------------------------------------------|-----------------------------------------------------------------------------------------------------------------------------------------------------------------------------------------------------------------------------------------------------------------------------------------------------------------------------------------------------------------------------------------------------------------------------------------------------------------------------------------------------------------------------------------------------------------------------------------------------------------------------------------------------------------------------------------------------------------------------------------------------------------------------------------------------------------------------------------------------------------------------------------------------------------------------------------------------------------------------------------------------------------------------------------------------------------------------------------------------------------------------------------------------------------------------------------------------------------------------------------------------------------------------------------------------------------------------------------------------------------------------------------|----------------------------------------------------------------------------------------------------------------------------------------------------------------------------------------------------------------------------------------------------------------------------------------------------------------------------------------------------------------------------------------------------------------------------------------------------------------------------------------------------------------------------------------------------------------------------------------------------------------------------------------------------------------------------------------------------------------------------------------------------------------------------------------------------------------------------------------------------------------------------------------------------------------------------------------------------------------------------------------------------------------------------------------------------------------------------------------------------------------------------------------------------------------------------------------------------------------------------------------------------------------------------------------------------------------------------------------------------------------------------------------------------------------------------------|

## THE NATALIE SHOP



12 TILLMAN PLACE  
 (Temple Bar Lane)  
 Off Grant Avenue  
 Phone: DOUGLAS 1502

*"Pixies for Good luck!  
 Ceramic pins for festive accent!  
 Smocks for distinctive styles!  
 Gifts for all occasions."*

### Mme. MADGE DE WITT

ART of SINGING

465 Geary Street

THE TRUE BEL CANTO

Voice Recording

Radio Technique

PRespect 1955



## OPERA GUILD MEMBERS — *Continued*

Miller, C. O. G.  
 Miller, Mrs. Robert Watt  
 Mittau, Private Franklin  
 Moffatt, Edward R.  
 Moffitt, J. K.  
 Monteagle, Mrs. Kenneth  
 Monteagle, Kenneth  
 Monteagle, Mr. and Mrs. Paige  
 Moore, Mrs. Hal E.  
 Moore, Mrs. Joseph A.  
 Moran, Mrs. Ramsay  
 Morgan, Mrs. James W.  
 Morley, Dr. Grace McCann  
 Montgomery, George  
 Mosgrove, Miss Alicia  
 Musto, Miss Laura  
 Nathan, Mrs. A. N.  
 National Broadcasting Co.  
 Nelson, Mrs. Hans  
 Neppert, Miss Julia M.  
 Neylan, John Francis  
 Nickel, J. Leroy, Jr.  
 Noble, Mrs. William H.  
 Obujen, Mrs. Mary  
 Okell, Mrs. Jack  
 Older, Benjamin J.  
 Oliver, Mrs. A. Leslie  
 Oppenheimer, Mrs. Julius  
 Orrick, Mrs. William H.  
 Parrot, Mrs. William  
 Parrott, Miss Barbara  
 Pettit, Richard R.  
 Phleger, Mrs. Herman  
 Pope, Mrs. George A., Jr.  
 Pope, Mrs. Kenneth  
 Porter, Mrs. Hugh B.  
 Porter, Mrs. M. C.  
 Potter, J. Sheldon  
 Powell, Mrs. Stanley  
 Powell, Mr. and Mrs. Stanley, Jr.  
 Purcell, Mrs. Hugh D.  
 Raggio, Mrs. John  
 Rawlings, Mrs. Stewart L., Jr.  
 Rees, Mrs. Albert  
 Reynolds, Dr. Ralph Arthur

Roberts, Mrs. John T.  
 Roe, Mrs. Hall  
 Rolkin, Mrs. Arlene Miller  
 Rosekrans, John N.  
 Rosenbaum, Mrs. Charles W.  
 Roth, Mrs. Angela Wing  
 Roth, Mrs. William P.  
 Rubke, F. W.  
 Russell, Mrs. Henry Potter  
 Ryder, Miss Virginia  
 Schaubye, Mr. and Mrs. Carl  
 Schirmer, George B.  
 Schwabacher, Albert  
 Schwabacher, Mrs. Carrie  
 Schwabacher, Mrs. Louis A.  
 Scott, Mrs. Bert C.  
 Scott, H. S.  
 Seckels, Alice  
 Selfridge, Mr. and Mrs. Bruce  
 Shaeffer, Mrs. Martha  
 Shainwald, Mrs. R. H.  
 Shainwald, Mrs. R. S.  
 Shearer, Mrs. H. H.  
 Sherman, Mrs. Fred R.  
 Shook, Mrs. Francis  
 Silver, Mrs. Rose  
 Slack, Charles W.  
 Sloss, Mrs. Leon  
 Sloss, Mrs. Leon, Jr.  
 Sloss, Mrs. Louis  
 Sloss, Judge and Mrs. M. C.  
 Smith, Mrs. Josephine A.  
 Smith, Mrs. Melville L.  
 Smith, Miss Cecelia  
 Smith, Mrs. Russell  
 Somers, Capt. G. W.  
 Sproul, Dr. and Mrs. Robert Gordon  
 Stanwood, Mrs. E. B.  
 Steinmeyer, Mrs. Hugo A.  
 Stern, Mrs. Ralph J. A.  
 Stern, Mrs. Sigmund  
 Strassburger, Mrs. Lawrence  
 Sullivan, Mr. and Mrs. Jerd  
 Sullivan, Walter H.  
 Sutro, Mrs. John A.

Swinerton, Mrs. Alfred B.  
 Symington, Mrs. Powers  
 Talbot, Mrs. Andrew  
 Thierbach, George  
 Thomas, Mrs. F. F., Jr.  
 Thomas, Mrs. Myron I.  
 Thompson, Miss Barbara B.  
 Thorne, Mrs. Julian  
 Threlkeld, Mrs. M. C.  
 Tobin, Mrs. Joseph  
 Topham, Mrs. Edward, Jr.  
 Torregano, Ernest J.  
 Towne, Mrs. James W.  
 Trumbull, Mrs. Henri W.  
 Udovich, Miss Lucile  
 Upton, Mrs. John R.  
 Van Wyck, Mrs. Sidney M.  
 Vaughan, Mr. & Mrs. Reginald L.  
 Volkmann, Mrs. Daniel  
 Waggoner, Mrs. Norman  
 Wagner, George  
 Walker, Mrs. Richard  
 Walkup, Mrs. Ward  
 Walter, Mrs. Clarence R.  
 Walter, Mrs. John I.  
 Warren, Ligan A.  
 Warren, Mrs. Ligan  
 Weatherwax, Mrs. C. M.  
 Weill, Michael D.  
 Westphal, Mrs. Downey  
 White, Mrs. Helen B.  
 White, Mrs. Millard C.  
 Whiting, Mrs. Randolph  
 Whitman, Mrs. Frederick C.  
 Williams, Stephen  
 Williar, Mrs. H. R.  
 Witter, Mr. and Mrs. Dean  
 Wood, Miss Elsie M.  
 Worden, Mrs. Clinton E.  
 Wores, Mrs. Theodore  
 Zaruna, Mrs. V.  
 Zellerbach, Mrs. Harold L.  
 Zellerbach, J. D.  
 Zook, Edgar T.

**BUY** *War Bonds*



**BUY** *War Bonds  
and Stamps*

*After the Opera visit*  
**THE CARDINAL ROOM**  
**RICHELIEU HOTEL**  
 VAN NESS AT GEARY

~~~~~  
**The Cocktail Lounge with  
 Distinctive Atmosphere**  
 ~~~~~

*Finest Liquors Served*

# HE CALLED IT "COMMON PRUDENCE"



(From a Letter to Martha Washington)

*Philadelphia, 19th June, 1775*

*"As life is always uncertain, and common prudence dictates to every man the necessity of settling his temporal concerns while it is in his power, I have, since I came to this place—for I had no time to do it before I left home—got Colonel Pendleton to draft a will for me by the directions I gave him, which I will now enclose. The provisions made for you, in case of my death, will, I hope, be agreeable. I shall add nothing more, as I have several letters to write, but to desire that you will remember me to your friends, and to assure you that I am, with the most unfeigned regard, my dear Patsy,*

*"Your Affectionate*

*G. Washington*

"Common prudence"... but many neglect to make a Will... or to keep present Wills up-to-date. Why not be the prudent exception?

*See Your Attorney About Your Will*

*Established 1852*

## **Wells Fargo Bank & Union Trust Co.**

Market at Montgomery

Market at Grant Ave.

SAN FRANCISCO, 20

Member F.D.I.C.





## WAFS

### Women's Auxiliary Ferrying Squadron

Theirs is the man-sized job of ferrying war planes from factories to air-bases for Uncle Sam. Expert flyers, each and every one . . . **THEY ARE THE BEST.**



# With us *It's* CHESTERFIELD

**GOOD TOBACCO, YES . . . THE RIGHT COMBINATION  
OF THE WORLD'S BEST CIGARETTE TOBACCOS**

It is not enough to buy the best cigarette tobacco, it's Chesterfield's right combination, or blend, of these tobaccos that makes them so much milder, cooler and definitely better-tasting.

Good Tobacco, yes . . . but the Blend —  
the Right Combination — that's the thing.



**SMOKE CHESTERFIELDS AND FIND OUT  
HOW REALLY GOOD A CIGARETTE CAN BE**