

Die Fledermaus

1942

Monday, October 26, 1942 8:30 PM

SFO_PUB_01_SFO_1942_10

Publications Collection

San Francisco Opera Archives

S A N F R A N C I S C O

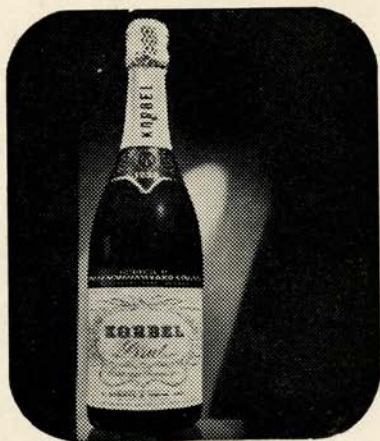
OPERA

C O M P A N Y

GAETANO MEROLA • GENERAL DIRECTOR



TWENTIETH ANNIVERSARY SEASON
OCTOBER 9 TO OCTOBER 31-1942
WAR MEMORIAL OPERA HOUSE



It Stands Alone

KORBEL BRUT IS TOPS IN AMERICAN CHAMPAGNE

Magazines which reach the most sophisticated audience in the United States unanimously give first place in American Champagnes to KORBEL BRUT
WE didn't say it first! THEY DID!

"THE BEST AMERICAN CHAMPAGNE to date is KORBEL BRUT 1933. Our guess is anyone would think it was imported." — Harper's Bazaar, February, 1941.

"PROBABLY THE MOST CHAMPAGNE-LIKE domestic wine is KORBEL BRUT 1933." — Cue Magazine, December 28, 1940.

"THE OUTSTANDING AMERICAN CHAMPAGNE to date is KORBEL BRUT 1933." — Town and Country, February, 1941.

"EXTREMELY ENJOYABLE, bone-dry and clean-tasting." — The New Yorker, March 15, 1941.

"AMONG THE FEW FINE CALIFORNIA CHAMPAGNES IS KORBEL BRUT, vintage 1933—a special cuvee which has been made as dry as the driest Champagnes for the English market." — St. Regis, Peacock Alley, The Ambassador, Plaza En Passant, The Savoyard, The Ritz Carlton, The Hampshire, The Sherry-Netherlands, Pierrot, January, 1941.

K O R B E L B R U T

Distributed by

TRADERS DISTRIBUTING CO.
314 FRONT STREET, SAN FRANCISCO, CALIFORNIA

*Designed with an eye to the future,
Built for Enjoyment today*



New powerful 1942 fully automatic radio-phonograph

CAPEHART PANAMUSE

The glorious tone, automatic record playing mechanism, program control and radio for both standard and short-wave broadcasts distinguish the superb Sheraton instrument illustrated. Quantity is limited. Price \$389.50.

Exclusive with Sherman, Clay

H. C. Capwell's
Fourth Floor
Oakland

Sherman  **Clay**

Kearny at
Sutter, San
Francisco

Pedro Domecq wears a White Tie

No formal dinner party would be right without white ties and formal gowns. Nor would it be quite correct without wine—a glass of fine Amontillado, Domecq's Selecto, with the soup, a table wine with the entree, and a mellow, golden cream Sherry, Domecq's Celebration Cream, with the dessert.

Ask your dealer to show you Pedro Domecq's range of Sherries. Your cellar without a noble Sherry like Domecq would be as incomplete as your wardrobe without evening clothes.

COMEX WINE & SPIRITS, INC.

New York City

San Francisco

Bottled in Jerez, Spain. Alcohol 18 to 20% by volume



COCKTAIL BAR IN BASEMENT PROMENADE
SERVICE ALSO ON DRESS CIRCLE AND MEZZANINE

Served at the Opera House BUFFET



G A E T A N O M E R O L A

General Director

SAN FRANCISCO OPERA COMPANY

1

MUNICIPAL CONCERTS

1943
THE ART COMMISSION
Presents

FIVE STAR SEASON
FOR YOUR CONCERT CALENDAR

JANUARY 8



LEOPOLD STOKOWSKI
CONDUCTING THE SHOSTAKOVICH SEVENTH SYMPHONY

JAN. 26th - 31



BALLET THEATRE
THE GREATEST IN RUSSIAN BALLET
26 NEW BALLETS NEVER SEEN BEFORE IN THE U. S. A.
8 PERFORMANCES

FEBRUARY 18



MARIAN ANDERSON
ONE OF THE GREATEST ARTISTS OF THE DAY

MARCH 18



JAN PEECE
AMERICA'S FOREMOST TENOR

APRIL 6



RISE STEVENS
THE AMERICAN SENSATION OF OPERA AND SCREEN

MUSIC
MAINTAINS
MORALE
MUSIC
MUST
GO
ON!



All with the

SAN FRANCISCO SYMPHONY ORCHESTRA
PIERRE MONTEUX, CONDUCTOR

SEASON TICKETS
\$9.90, \$7.50, \$6.00, \$4.40, \$2.20
Tax Included

A Season Ticket includes Opening Night of Ballet Theatre and choice of any other Ballet Theatre Performance
Mail or place orders with Symphony Box Office, Sherman, Clay & Co., San Francisco, SUTter 1331

San Francisco
OPERA ASSOCIATION



OFFICERS

KENNETH MONTEAGLE
PRESIDENT

MRS. STANLEY POWELL
VICE-PRESIDENT

ARTHUR MERRILL BROWN, JR.
VICE-PRESIDENT

CHARLES R. BLYTH
VICE-PRESIDENT

GEORGE T. CAMERON
TREASURER

EDWARD F. MOFFATT
SECRETARY

BOARD OF DIRECTORS

CHARLES R. BLYTH
ARTHUR MERRILL BROWN, JR.
GEORGE T. CAMERON
WILLIAM W. CROCKER
MORTIMER FLEISHHACKER
TIMOTHY HEALY

KENNETH MONTEAGLE
JOHN FRANCIS NEYLAN
MRS. STANLEY POWELL
MRS. HENRY POTTER RUSSELL
RICHARD M. TOBIN
NION R. TUCKER



EXECUTIVE STAFF

PAUL POSZ
BUSINESS MANAGER

HOWARD G. HANVEY - CURRAN SWINT
PUBLICITY

PHYLIS AMATI - ARTHUR FRAHM
TICKET SALES

JESSIE KEENE
PRODUCTION SECRETARY

EVELYN CROCKETT
OFFICE SECRETARY



*We took the Time
to bring you Good Wine*

PETRI WINE

*Guaranteed
Character**

* If you are in any manner dissatisfied with the contents of the bottle return it to your dealer with your name and address and your full purchase price will be refunded by us. • Petri Wine Company, San Francisco, Calif.



CALIFORNIA
PORT (*Red & White*)
SHERRY
MUSCATEL
TOKAY
ANGELICA
Alcohol 20% by Volume
CLARET
BURGUNDY
ZINFANDEL
SAUTERNE

V. M. RAMIREZ & CIA. WORLD FAMOUS IMPORTED LIQUORS



RAMIREZ ELIXIR

RAMIREZ CURACAO
CUATRO LIQUEUR
RAMIREZ VODKA
CREMA DE CACAO
RAMIREZ PLUS CAFE

Daniel Ramirez M.
Special Representative

A. Giurlani & Bros.

537 Front Street, San Francisco, Calif.
Sole Importer for Northern California

BOARD OF GOVERNORS

GEORGE WASHINGTON BAKER, JR.	MRS. LAWRENCE W. HARRIS	JOHN FRANCIS NEYLAN
P. A. BERGEROT	MRS. ROBERT H. HAWLEY	MRS. SELBY C. OPPENHEIMER
CHARLES R. BLYTH	J. EMMET HAYDEN	ETTORE PATRIZI
J. BRENDAN BRADY	TIMOTHY HEALY	RALPH L. PHELPS
H. SEWALL BRADLEY	EDWARD D. KEIL	MRS. M. C. PORTER
ARTHUR MERRILL BROWN, JR.	CHARLES H. KENDRICK	MRS. STANLEY POWELL
GUIDO CAGLIERI	SAMUEL KNIGHT	STANLEY POWELL
MRS. GEORGE T. CAMERON	MRS. MARCUS S. KOSHLAND	ANGELO J. ROSSI
GEORGE T. CAMERON	LEWIS A. LAPHAM	MRS. HENRY POTTER RUSSELL
CHARLES A. CHRISTIN	MRS. STINE LEIS	A. SBARBORO
TEMPLETON CROCKER	J. B. LEVISON	FRED R. SHERMAN
WILLIAM W. CROCKER	MISS EDITH LIVERMORE	PAUL SHOUP
GEORGE E. CROTHERS	M. E. LOMBARDI	MRS. M. C. SLOSS
MISS MARY C. DUNHAM	MISS RUTH W. LORING	RALPH J. A. STERN
SIDNEY M. EHRMAN	MISS SALLIE MAYNARD	MRS. SIGMUND STERN
MRS. WILLIAM M. FITZHUGH	MRS. C. D. G. MILLER	MRS. DAVID ARMSTRONG TAYLOR
MORTIMER FLEISHHACKER	ROBERT W. MILLER	M. C. THRELKELD
A. P. GIANNINI	EDWARD F. MOFFATT	RICHARD M. TOBIN
MARSHAL HALE	KENNETH MONTEAGLE	NIDON R. TUCKER
REUBEN B. HALE	GUIDO MUSTO	RANDOLPH C. WALKER
	MRS. JOHN FRANCIS NEYLAN	WHITNEY WARREN, JR.



WAR MEMORIAL OPERA HOUSE

(OWNED AND OPERATED BY THE CITY AND COUNTY OF SAN FRANCISCO)

BOARD OF TRUSTEES

HARRY A. MILTON PRESIDENT	C. A. MARCKLEY VICE-PRESIDENT	JOHN J. SULLIVAN
ALVIN GERLACK	FELIX S. MCGINNIS	J. H. THRELKELD
CHAS. B. KLEUPFER	GUIDO J. MUSTO	
WALTER A. LEONETTI	RALPH J. A. STERN	COL. WILLIAM H. TOBIN
EDWARD SHARKEY MANAGING DIRECTOR OF THE WAR MEMORIAL		IRA G. THOMPSON SECRETARY TO THE BOARD OF TRUSTEES



AIR RAID PRECAUTIONS

THE OPERA HOUSE IS "BLACKED OUT" AND ALL FACILITIES HAVE BEEN INSPECTED AND APPROVED BY CIVILIAN DEFENSE AUTHORITIES. AS AN ADDITIONAL FACTOR FOR YOUR SAFETY, TRAINED AIR RAID WARDENS ARE ON DUTY DURING PERFORMANCES.
PLEASE OBEY ALL INSTRUCTIONS OF THE AIR RAID WARDENS



BETWEEN ACTS VISIT THE SAN FRANCISCO OPERA GUILD LIBRARY-MUSEUM
IN LOBBY OPPOSITE COURT ENTRANCE



LIBRETTOS AND OPERA GLASSES IN FOYER . . . BUFFET SERVICE IN BASEMENT
PROMENADE . . . HEAD SETS FOR THE DEAF ARE AVAILABLE AT TABLE IN MAIN
FOYER . . . ATTENDANT WILL CONNECT WITH SEAT LOCATION UPON REQUEST.
FOR LOST AND FOUND INFORMATION, INQUIRE AT CHECK ROOM NO. 1
WILLIAM A. MEADE, DIRECTOR OF HOUSE SERVICE

Traditional

For 67 years W. & J. Sloane
have assisted in the
furnishing of fine homes
for discriminating
San Franciscans

W & J **SLOANE**
SUTTER near GRANT



SAN FRANCISCO OPERA COMPANY

GAETANO MEROLA
GENERAL DIRECTOR

ARMANDO AGNINI
STAGE AND TECHNICAL DIRECTOR

HERBERT GRAF
STAGE DIRECTOR

GIACOMO SPADONI
CHORUS MASTER

WILLAM CHRISTENSEN
BALLET MASTER

ETIENNE BARONE
ASSISTANT STAGE DIRECTOR



CONDUCTORS and ASSISTANTS

GAETANO MEROLA
PIETRO CIMARA

WALTER HERBERT
ITALO MONTEMEZZI
FRITZ BERENS

FAUSTO CLEVA
GIACOMO SPADONI

NAOUM BLINDER
CONCERT MASTER

JULIUS HAUG
LIBRARIAN



ARTISTS

LICIA ALBANESE
SOPRANO

COLIN HARVEY
BARITONE

LILY PONS
SOPRANO

JOSEPHINE ANTOINE
SOPRANO

JEANETTE HOPKINS
SOPRANO

MARGARET RITTER
SOPRANO

LORENZO ALVARY
BASS

FREDERICK JAGEL
TENOR

STELLA ROMAN
SOPRANO

SALVATORE BACCALONI
BASS

RAOUL JOBIN
TENOR

BIDU SAYAO
SOPRANO

DOUGLAS BEATTIE
BASS

CHARLES KULLMAN
TENOR

CHARLES SHIFFELER
BARITONE

MARGIT BOKOR
SOPRANO

KATHLEEN LAWLOR
SOPRANO

JEAN TENNYSON
SOPRANO

RICHARD BONELLI
BARITONE

MARJORIE MCCARTHY
SOPRANO

CLARAMAE TURNER
CONTRALTO

JOHN BROWNLEE
BARITONE

ROBERT MARSHALL
TENOR

THELMA VOTIPKA
SOPRANO

CHRISTINA CARROLL
SOPRANO

VERNA OSBORNE
SOPRANO

PAUL WALTI
TENOR

BRUNA CASTAGNA
CONTRALTO

FRANK PALUMBO
BARITONE

ROBERT WEEDE
BARITONE

GEORGE CEHANOVSKY
BARITONE

JAN PEECE
TENOR

EDWARD WELLMAN
BARITONE

ALESSIO DE PAOLIS
TENOR

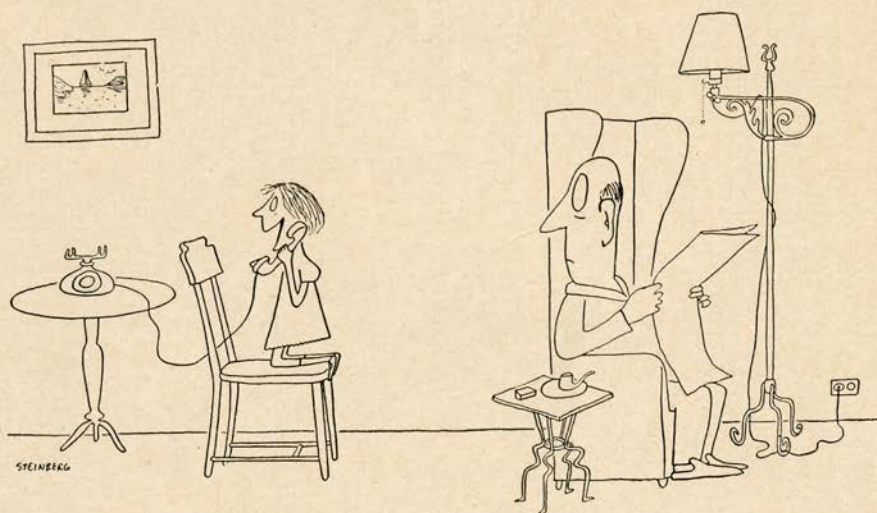
IRRA PETINA
CONTRALTO

MAREK WINDHEIM
TENOR

PEGGY ENGEL
SOPRANO

EZIO PINZA
BASS

ELIZABETH WYSOR
CONTRALTO



"Hello, is this the Fairmont Hotel Cirque Room?"

PENT HOUSE

Suitable for

*Art Galleries and Studio
and Smart Shops with Outside Court*

*Downtown Location 1/2 Block from
Union Square Garage*

133 GEARY STREET

(24-hour service)

For Rent or Lease

CHORAL ENSEMBLE

MISSES		MESSRS.	
VIDLET AURAND	MERYL LIGDA	EVARISTO ALIBERTINI	MAX LORENZINI
MARY BOHLEN	MARJORIE MC CARTHY	GEARY ANDERSON	ALLAN LOUW
LORRAINE CALCAGNO	DOROTHY MC INTYRE	NORMAN BAKULICH	BENJAMIN MARTIN
LELIA CAMBI	MARY HELEN MARKHAM	ALBERT BARRETT	CARLO MENUCCI
BEVERLY ELLIS	MARY MATULOVICH	ALTON BERNHARD	HERBERT NYSTROM
PEGGY ENGEL	ASTA MOBER	LOUIS BRAUNSTEIN	ROBIN NELSON
MONA GRINE	DOROTHY MOSHER	DOUGLASS CROSS	FRANCIS OLIVER
JEANETTE HOPKINS	MARGARET RITTER	AMERIGO DEL GRANDE	PAUL SCHAGEN
ORTHELLA HUGHES	GLADYS SIMPSON	ARTHUR DE MASI	ALLEN SCHMIDLING
JUNE JOHANSEN	ROMALDA STESKY	PAUL DE POYSTER	LLOYD SIMPSON
LUCILLE KIRTLEY	CLARAMAE TURNER	DANELUZ GALLIANO	GEORGE TALLONE
KATHLEEN LAWLOR	JOSEPHINE VERCILLO	PAUL GUENTER	ALBERT VANNUCCI
NEVART LEVON		COLIN HARVEY	FRED WAHLEN
		MARTIN JENKINS	PAUL WALTJ
		JAMES LACY	EDWARD WELLMAN
			SYDNEY WORTHINGTON



BALLET

RUBY ASQUITH, PRIMA BALLERINA

WILLAM CHRISTENSEN, PREMIER DANSEUR

SOLOISTS	PRINCIPAL DANCERS	CORPS DE BALLET	
MISSES	MISSES	MISSES	BETTY PARADES
BETTE GERLACH	NATALIE CARR	VIRGINIA CROCKER	PEGGY SWIFT
MATTLYN BEVURTZ	GINA CHAPPELL	JOAN CORTAZ	JOCELYN VOLLMAR
ALICE KOTCHIK	CELENA CUMMINGS	ANDREA DOWNING	
ROSALIE PROSCH	MILDRED FERGUSON	PEARL FRICK	MESSRS.
LOIS TREADWELL	WANNA WILLIAMS	HELENE HENDERSON	JOAQUIN FELSCH
ONNA WHITE	MESSRS.	MARION JACOBSEN	CLIFF JONES
BARBARA WOODS	GUY ALDEN	CAROLYN LA VEAU	MARK LINTZ
MESSRS.	CLARE FREEMAN	EDWINA NOBLE	MARK NELSON
RONN MARVIN	MARVIN KRAUTER	HOPE LINTZ	
EARL RIGGINS	DUNCAN SMITH		



PROGRAM

PISANI PRINTING & PUBLISHING COMPANY, PUBLISHERS, DESIGNERS AND PRINTERS

COSTUMES AND WIGS BY GOLDSTEIN & CO.

ALEXANDER AGNINI
Wardrobe Master

INEZ DODSON
Wardrobe Mistress

EVERETT MASON
Chief of Makeup

BUFFET SERVICE IN BASEMENT PROMENADE AND
DRESS CIRCLE DURING ALL PERFORMANCES



Your Next Suit to Order

BUT

Choose the most becoming style of jacket and skirt by *actually trying on some of our models*—Don't choose from a picture.

Choose the goods from our large selection of imported and domestic 100% woolens in *full pieces*—Don't choose from a sample.

Our policy of requiring at least three try-ons insures perfect fit.

\$50 to \$110

jack davis

312 POST

at Entrance to Plaza Hotel

ASSOCIATED INSURANCE COMPANIES

ASSOCIATED INDEMNITY CORPORATION • ASSOCIATED FIRE & MARINE INSURANCE COMPANY

L. H. MUELLER
CHAIRMAN OF THE BOARD
L. S. MOORHEAD
PRESIDENT



Head Office
ASSOCIATED INSURANCE BUILDING
332 PINE STREET
SAN FRANCISCO

Before and After the
Opera

FINE FOODS
Ice Cream ★ Sodas
Pastries ★ Candies

Served in the most beautiful restaurants in the West—at no greater cost than elsewhere



Pig'n Whistle

33 POWELL STREET, Near Market

ARTISTS OF San Francisco OPERA COMPANY

Hullman



Pons



Sayas



Tommyson



Pinga



Weede



Roman



Baccaloni



Alamy



Bobor

Bonelli



Pearce



Jobin



Votipka



Jagel



Wündheim



Valti



Wysor



CHOICE OF THE CONNOISSEURS

SIMI VINEYARD

Fine California Wines

SELECTION OF HOTEL DEL MONTE

Three Gold Medal Winners at
the 1941 California State Fair

SIMI VINEYARD SHERRY served at Opera House Buffet

Repertoire

REGULAR SERIES

- AIDA (*Verdi*) *Friday Night, October 9, at 8:00*
With Roman, Castagna, Jagel, Weede, Pinza, Alvary, Votipka, Walti.
MEROLA, Conductor
- LA FILLE DU REGIMENT (*Donizetti*) *Monday Night, October 12, at 8:30*
With Pons, Baccaloni, Jobin, Petina, Alvary, Cehanovsky, Walti,
Hopkins, Riggins, Krauter
CIMARA, Conductor
- LA TRAVIATA (*Verdi*) *Wednesday Night, October 14, at 8:30*
With Sayao, Peerce, Bonelli, Votipka, De Paolis, Beattie, Cehanovsky, Alvary, Ritter
CLEVA, Conductor
- THE BARTERED BRIDE (*Smetana*) *Friday Night, October 16, at 8:30*
With Antoine, Kullman, Windheim, Wysor, Votipka, Beattie, Cehanovsky,
Alvary, Shiffeler, Engel, Harvey
HERBERT, Conductor
- CARMEN (*Bizet*) *Monday Night, October 19, at 8:00*
With Petina, Jobin, Brownlee, Albanese, Votipka, Carroll, De Paolis, Alvary, Cehanovsky
MEROLA, Conductor
- FAUST (*Gounod*) *Wednesday Night, October 21, at 8:15*
With Albanese, Kullman, Pinza, Brownlee, Osborne, Votipka, Cehanovsky.
CLEVA, Conductor
- L'AMORE DEI TRE RE (*Montemezzi*) *Friday Night, October 23, at 8:30*
With Tennyson, Kullman, Pinza, Weede, Wysor, Votipka, Walti,
De Paolis, McCarthy, Turner, Lawlor
MONTEMEZZI, Conductor
- DIE FLEDERMAUS (*Johann Strauss*) *Monday Night, October 26, at 8:30*
With Antoine, Bokor, Petina, Windheim, Marshall, Brownlee,
Beattie, Alvary, Carroll, Lockhart
HERBERT, Conductor
- THE MASKED BALL (*Verdi*) *Wednesday Night, October 28, at 8:00*
With Roman, Jagel, Bonelli, Bokor, Castagna, Alvary, Beattie,
Walti, Cehanovsky, Wellman
CLEVA, Conductor
- LE COQ D'OR (*Rimsky-Korsakov*) *Friday Night, October 30, at 8:30*
With Antoine, Baccaloni, Wysor, Beattie, De Paolis, Votipka, Palumbo, Walti
MEROLA, Conductor



POPULAR SERIES

- LUCIA DI LAMMERMOOR (*Donizetti*) *Sunday Afternoon, October 18, at 2:45*
With Pons, Peerce, Alvary, Bonelli, Votipka, De Paolis, Walti.
CIMARA, Conductor
- AIDA (*Verdi*) *Sunday Afternoon, October 25, at 2:30*
With Roman, Castagna, Jagel, Weede, Pinza, Alvary, Votipka, Walti.
MEROLA, Conductor
- THE BARBER OF SEVILLE (*Rossini*) *Tuesday Night, October 27, at 8:15*
With Sayao, Kullman, Brownlee, Baccaloni, Pinza, Petina, Cehanovsky.
CLEVA, Conductor
- FAUST (*Gounod*) *Saturday Night, October 31, at 8:15*
With Albanese, Kullman, Pinza, Brownlee, Osborne, Votipka, Cehanovsky.
CLEVA, Conductor



SPECIAL PERFORMANCE

- LA FILLE DU REGIMENT (*Donizetti*) *Thursday Night, October 22, at 8:30*
With Pons, Baccaloni, Jobin, Petina, Alvary, Cehanovsky, Walti.
CIMARA, Conductor

Auspices: FRANCE FOREVER



*Dietetically NON-FATTENING

**ACME
BEER**

ACME BREWERIES, SAN FRANCISCO



†RELATIVELY SO COMPARED TO OTHER FOODS

BUY WAR BONDS AND STAMPS

PROGRAM

SUNDAY AFTERNOON, OCTOBER 25—2:30

Aida

Opera in four acts. Music by Giuseppe Verdi
Text by Antonio Ghislanzoni

THE CAST

Aida, an Ethiopian slave.....STELLA ROMAN
Amneris, daughter of the Egyptian King....BRUNA CASTAGNA
Rhadames, captain of the Egyptian guard.....FREDERICK JAGEL
Amonasro, King of Ethiopia, Aida's father.....ROBERT WEEDE
Ramfis, High Priest of Isis.....EZIO PINZA
The King of Egypt.....LORENZO ALVARY
MessengerPAUL WALT
PriestessTHELMA VOTIPKA

*Priests, Priestesses, Ministers, Captains, Soldiers, Officials, Ethiopian
Slaves and Prisoners, Egyptians, etc.*

Solo Dancer: Ruby Asquith

Corps de Ballet

STAGE DIRECTOR
ARMANDO AGNINI

CONDUCTOR
GAETANO MEROLA

CHORUS MASTER
GIACOMO SPADONI



TIME AND PLACE In Pharaoh's Time; Memphis and Thebes

Act I: Scene 1: Hall in King's Palace at Memphis
Scene 2: Temple of Isis

Act II: Scene 1: A Hall in Amneris' Apartment
Scene 2: The gate of Thebes

Act III: Shores of Nile, near Temple of Isis

Act IV: Scene 1: Outside the Judgment Hall
Scene 2: Above—In Temple of Vulcan
Below—Vault beneath the Temple

**SEATS FOR ALL REMAINING PERFORMANCES
AVAILABLE AT SHERMAN, CLAY BOX OFFICE**

Encores not permitted - Bell rings three minutes before curtain rises

BUY WAR SAVINGS BONDS AND STAMPS

The Story of "Aida"

ACT I

A messenger has come to the palace of the Egyptian king with word of approaching invasion by the Ethiopians under the leadership of King Amonasro. Ramfis, the high priest, reveals to Rhadames that the Gods have selected him to command the forces sent forth to repel the invasion. This choice pleases Princess Amneris for victory would make Rhadames, with whom she is in love, a desirable mate for her. The warrior's thoughts are not of Amneris, however, but of Aida, Ethiopian slave of the princess, captured in a late war, and, unknown to the Egyptians, a daughter of Amonasro. Amneris, coming upon Rhadames, rallies him on the passion of his bearing but jealously comprehends it is not for her when the weeping slave girl enters. The court assembles and escorts Rhadames to the temple to receive his command. (Scene 2). In the recesses of the temple of Vulcan, Rhadames receives a consecrated sword and is dedicated to his trust.

ACT II

Word has come that Rhadames has been victorious. Amneris thinks upon his strange behavior with Aida as she joins her slave girls in singing his praises. On the approach of Aida she deftly gains from her the confession of her love for Rhadames. Then, telling of her own love for the warrior, Amneris commands that Aida shall witness Rhadames' obediences to herself on his triumphant return. (Scene 2). Royal welcome is given Rhadames on his return with the conquered Ethiopians. Amonasro, dressed as a plain officer, is recognized by Aida. Signaling her not to betray his rank he acknowledges her as his daughter and tells how the king, wounded, had died at his feet. Rhadames, offered any boon he may wish, requests the freedom of the Ethiopians. His wish is granted but Amonasro and Aida are retained as hostages. The king then gives Rhadames, as his supreme reward, the hand of Amneris.

ACT III

Amneris goes to the temple on the eve of her marriage to Rhadames. Aida, coming later, is followed by her father who plays upon her love for Rhadames and her concern for her countrymen to involve him in a plot to his advantage. Rhadames appearing, Amonasro conceals himself. Aida begs her lover to flee with her. Enraptured, he unwittingly discloses his army's movements, upon which Amonasro comes forth. Amneris, concealed among the palms, has overheard and, enraged, rushes out. Amonasro escapes with Aida.

ACT IV

Amneris, regretting the act that gave the man she loved to the priests, sends for Rhadames and offers to save him if he accept and return her love. Rhadames refuses and she calls down the hatred of the Gods upon him. The priests escort Rhadames to the Hall of Justice. Amneris hears the trial as it is conducted behind the scenes and wildly curses the priesthood as sentence is pronounced. (Scene 2). Aida, informed of Rhadames' sentence, has concealed herself in the tomb. When he descends into it and prays that she may never know his fate, Aida comes forth that they may die together.

.. Let There Be Music ..



Yes, Every Day of the Year, there is Music..

It's the famed EVENING CONCERT, a nightly two-hour program of the world's greatest music as recorded by the finest artists of our time. The EVENING CONCERT is heard nightly from 8 to 10 o'clock.

And, every morning from 11 until noon, there's the MORNING CONCERT, an hour filled with fine recordings; on Sundays from noon until 1:30 there's the SYMPHONIC HOUR, which includes brilliant commentary by Mr. Alfred Frankenstein, KYA music consultant and Chronicle music editor.

Truly, every day of the year there is great music, and it is yours for the dialing.

Then too, there's More For Instance there's ..

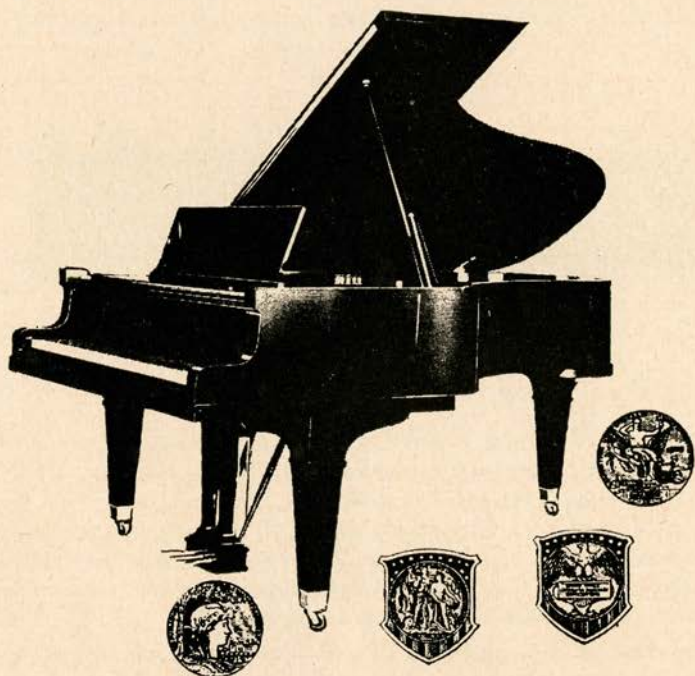
The brilliant Opera season program OPERA CURTAIN TIME, exclusive last-minute interviews with the stars themselves direct from the opera house. . . . WINFORMATION, a weekday (10:30 a. m.) woman's program as vital as the WAAC's and WAVES. . . . THE NEWS IN REVIEW, a daily (5 p. m.) news program featuring three men and the two greatest news service reports—Associated Press and International News Service. . . . VICTORY WINDOW, daily interviews with people you want to meet (10:45 a. m.). . . . DUDE MARTIN and his gang (7 a. m. and 6 p. m.) singing and playing traditional music of the West.

18 hours of daily entertainment and news!

5000 WATTS

Entirely Locally Owned **KYA** "1260 On Your Dial"

THE OFFICIAL PIANO of the
SAN FRANCISCO OPERA COMPANY



Choose your Piano as the Artists Do



PONS



MEROLA



BJOERLING



ITURBI

THE BALDWIN PIANO CO.

310 SUTTER STREET, SAN FRANCISCO

BALDWIN

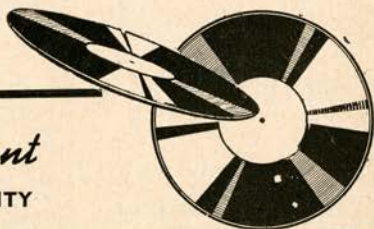
MASTERS WHO CHOOSE THE BALDWIN

ANTOINE, JOSEPHINE
ARRAU, CLAUDIO
AUBERT, ROGER
BACHAUS, WILHELM
BAMBOSCHEK, GIUSEPPE
BARTOK, BELA
BATTISTA, JOSEPH
BAUER, HAROLD
BEECHAM, SIR THOMAS
BEHREND, JEANNE
BILLOTI, ANTON
BIRD, SARI
BJOERLING, JUSSI
BOGUSLAWSKI, MOISSAYE
BORI, LUCREZIA
BOULANGER, NADIA
BRAZEAU, MARIA THERESA
BURGIN, RICHARD
CASELLA, ALFREDO
CELLA, THEODORE
CHAMLEE, MARIO
CHAPPLE, STANLEY
DAYAS, KARIN
DE HORVATH, CECILLE
DE SOLIS, SALITO
EARLE, DAVID
EASTON, FLORENCE
ECHANIZ, JOSE
EISENBERG, MAURICE
EISENBERGER, SEVERIN

ERICOURT, DANIEL
FALDES, ANDOR
FARREL, FRANK
FIEDLER, ARTHUR
FIRKUSKY, RUDA
FRANCISCATTI, ZIND
GABOR, ARNOLD
GASH, EUGENE
GIESEKING, WALTER
GIMPEL, JAKOB
GOLDOVSKY, BORIS
GOLDSAND, ROBERT
GOLSCHMAN, BORIS
GOOSSENS, EUGENE
HALL, IRMA SCHENUIT
HERD, STEPHEN
ITURBI, AMPARO
ITURBI, JOSE
JOHNSON, EDWARD
KEENAN, BREENDAN
KIPNIS ALEXANDER
KITAIN, ANATOLE
KITAIN, ROBERT
KOUSSEVITZKY, SERGE
KOZENN, MARGUERITE
LABUNSKI, WIKTOR
LANNER, MAX
LEOPOLD, RALPH
LHEVINNE, JOSEF
LHEVINNE, ROSINA
LUBDSCHUTZ, PIERRE
LUBDSHUTZ, LEA
MASON, EDITH
MAYRAND, ANNE
MIROVITCH, ALFRED

MITTMAN, LEOPOLD
MOORE, GRACE
MORINI, ERICA
NEMENOFF, GENIA
NAEGELE, CHARLES
NIN-CULMELL, JOAQUIN
NOSKE, WILLEM
PAVLOVSKY, VALENTINE
PERSINGER, LOUIS
PIATIGORSKY, GREGOR
PODOLSKY, LEO
PONS, LILY
PONSELLE, ROSA
POSSELT, RUTH
RAISA, ROSA
REYES, ANGEL
RIMINI, GIACOMO
ROSENTHAL, MORIZ
SANROMA, JESUS MARIA
SCHAFMEISTER, HELEN
SCHIPA, TITO
SCHMITZ, E. ROBERT
SCHWALB, MIKLOS
SCIONTI, ISABEL
SCIONTI, SYLVIO
SEGALL, BERNARDO
SHURE, LEONARD
SLENCZYNSKI, RUTH
SMIT, LEO
STRAWINSKY, IGOR
SZIGETI, JOSEPH
TAGLIAFERO, MAGDA
TANSMAN, ALEXANDER
TEMPLETON, ALEC
TRAUBEL, HELEN
WASSERMAN, JOYCE
WITTGENSTEIN, PAUL
WITTGENSTEIN, VICTOR
WITHORN, EMERSON
YAFFE, SAMUEL
ZACHARA, FRANCISZEK
ZARDO, ERIC
BELGIUM PIANO STRING
QUARTET, THE

VISIT OUR *Record Department*
ONLY GROUND FLOOR RECORD DEPT. IN THE CITY



1828 WEBSTER STREET, OAKLAND



Pierre Monteux
Conductor

The Musical Association of San Francisco

LEONORA WOOD ARMSBY · PRESIDENT AND MANAGING DIRECTOR
HOWARD K. SKINNER, BUSINESS MANAGER

Presents THE THIRTY-FIRST SEASON OF THE

San Francisco Symphony Orchestra Pierre Monteux, Conductor

TWELVE
FRIDAY
AFTERNOON
CONCERTS
2:15 o'clock

TWELVE
SATURDAY
EVENING
CONCERTS
8:30 o'clock

December 4	Opening Concerts	December 5
December 11	All Russian Program	December 12
January 15	Albert Spalding, Violinist	January 16
January 22	José Iturbi, Conducting + Amparo Iturbi, Pianist.	January 23
February 5	Claudio Arrau, Pianist—"All Americas" Program	February 6
February 12	Orchestral Program	February 13
February 26	Orchestral Program	February 27
March 5	Sergei Rachmaninoff, Pianist	March 6
March 12	Orchestral Program	March 13
March 26	Dorothy Maynor, Soprano	March 27
April 2	Laura Dubman, Pianist	April 3
April 16	Closing Concerts	April 17

WAR MEMORIAL OPERA HOUSE

Tickets at Symphony Box Office, Sherman, Clay, SU 1331

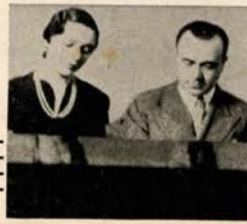
FRIDAY SEASON PRICES
\$8.58 to \$35.97 (Incl. Tax)
SATURDAY SEASON PRICES
\$7.92 to \$16.50 (Incl. Tax)

Amparo Iturbi - José Iturbi

Albert Spalding

Amparo Iturbi

Laura Dubman.



PROGRAM

MONDAY NIGHT, OCTOBER 26, at 8:30

Die Fledermaus (The Bat)

First time by San Francisco Opera Company

Comic Opera in three acts. Music by Johann Strauss

English adaptation by Ruth and Thomas Martin and Donald H. Alden

THE CAST

Gabriel von Eisenstein.....	MAREK WINDHEIM
Rosalinda, his wife.....	MARGIT BOKOR
Adele, her maid.....	JOSEPHINE ANTOINE
Prince Orlofsky.....	IRRA PETINA
Frank, the prison warden.....	DOUGLAS BEATTIE
Dr. Falke, a notary.....	JOHN BROWNLEE
Alfred, a singer.....	*ROBERT MARSHALL
Dr. Blind, an attorney.....	LORENZO ALVARY
Molly, Adele's sister.....	CHRISTINA CARROLL
Frogg, a jailor.....	GENE LOCKHART
Ivan, the Prince's servant.....	RONN MARVIN

*Actors, Actresses, Ballet Dancers, Members of the Diplomatic Corps,
Ladies, Gentlemen, Servants*

Solo Dancer: Ruby Asquith with Corps de Ballet

*San Francisco Début

STAGE DIRECTOR
HERBERT GRAF

CONDUCTOR
WALTER HERBERT

CHORUS MASTER
GIACOMO SPADONI



TIME AND PLACE Vienna about 1870
Act I: Salon in Eisenstein's Home
Act II: Garden of Prince Orlofsky's Palace
Act III: Office of the Prison

Produced by Herbert Graf. Settings by Armando Agnini, constructed in the studios of the San Francisco Opera Association

**SEATS FOR ALL REMAINING PERFORMANCES
AVAILABLE AT SHERMAN, CLAY BOX OFFICE**

Encores not permitted - Bell rings three minutes before curtain rises

BUY WAR SAVINGS BONDS AND STAMPS

The Story of "Die Fledermaus"

ACT I

A voice is heard in a serenade off stage as Adele reads a letter from Molly inviting her to a ball that night at the Villa of Prince Orlofsky. Rosalinda, who has recognized the serenader as Alfred whose voice had led to her infatuation before her marriage to Eisenstein, enters and Adele begs the night off. Rosalinda refuses because Eisenstein is to be imprisoned. Adele leaves as Alfred rushes in and ardently embraces Rosalinda. She implores him to leave but finally consents to receive him while her husband is under arrest. Adele's request is now granted. Eisenstein returns home angry because his three-day arrest has been extended for which he blames Dr. Blind, whom he forthwith discharges. Dr. Falke, a former fellow-student of Eisenstein, arrives with an invitation to the Prince's ball. Eisenstein decides to go but, of course, without Rosalinda's knowledge. On his departure Alfred slips in but his tête-à-tête with Rosalinda is interrupted by Frank, newly appointed prison warden, who, thinking Alfred is Eisenstein, takes him off.

ACT II

Planning revenge for a practical joke which had earned him his nickname of "The Bat" when they were in college, Dr. Falke had arranged the ball hoping for complications on the meeting of Eisenstein and Adele. Prince Orlofsky had indiscriminately invited the good elite of the city and the ladies and gentlemen of lighter life. As the guests assemble it occurs to Dr. Falke that the presence of Rosalinda would speed things up a bit and he sends her word to come and surprise her husband in the company of ladies of uncertain morals. Eisenstein has been introduced as Marquis Renard. He and Adele recognize each other but when he addresses her as a servant she makes him beg her pardon. To complete the comedy of errors Falke also has invited the prison warden who comes as Chevalier Chagrin. Eisenstein meets an alleged Hungarian countess, none other than the masked Rosalinda, who filches his watch when he makes ardent advances and slips away. Eisenstein and Frank soon hurriedly depart for the prison.

ACT III

Frogg, also new to his position, is quite befuddled. Alfred is heard humming opera arias in his cell. Frank, still in his cups, comes in. Soon Adele, with whom he had audaciously flirted at the ball, enters with Molly to force the "Chevalier" to make good his promise of a career for her. Frogg announces more visitors and Frank locks the sisters in a cell. Meanwhile Alfred had sent for a lawyer who it turns out was Dr. Blind. But before he arrives Eisenstein reports to start his prison term. He and Frank have difficulty convincing each other of their real identity. But finally the fact is established that a presumed Eisenstein had been arrested the night before while at supper with Rosalinda. Suddenly sobered, Eisenstein vows vengeance. He borrows Dr. Blind's glasses, wig and coat and so disguised questions Alfred and Rosalinda, the latter having also come to the prison. Fooled by his trick they tell all. Rosalinda wants to start divorce proceedings. Eisenstein throws off his disguise and accuses them of adultery but cools down when Rosalinda shows him his watch. Falke appears with Orlofsky and the guests at the ball, tells them it was only a joke and all ends happily. The Bat having had his revenge.



Try this time-stretcher...

Who *isn't* busy these days—wartime demands being what they are!

Take your own case. Don't you find it's getting harder and harder to give enough attention to things like *personal* affairs? But, fortunately, that's one time-taking job where we can help you.

Through a simple Agency Account with this Bank, you put stocks, bonds, or any form of security you have into our hands for supervision. Our Trust Department handles all management and safekeeping details. You retain ownership, with as much or as little investment control as you like.

Any officer of the Bank will gladly give you further details about an Agency Account's time-saving features.

Head Office: 400 CALIFORNIA STREET • *Mission Branch:* 16TH STREET & JULIAN AVE.

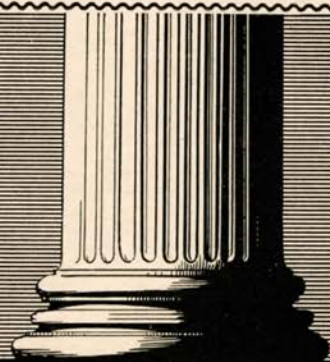
THE BANK OF CALIFORNIA

FOUNDED IN 1864 • NATIONAL ASSOCIATION

SAN FRANCISCO • PORTLAND • SEATTLE • TACOMA •

Member F. D. I. C.

BUY U. S. WAR BONDS & STAMPS



Radio Station KGO and the Blue Network Company take pleasure in announcing a series of four Thursday Evening Concerts to be broadcast at 9:30 P.M. from Studio A of Radio City, Taylor and O'Farrell Streets, San Francisco. These concerts will feature the KGO String Quartet and noted guest artists.

October 8 — *Chausson Concerto* for violin and piano, and string quartet.
Isaac Stern, violin
Lev Shor, piano

October 15 — Arthur Bliss *Conversations* for violin, cello, flute, oboe and viola.
Vaughan Williams *On Wenlock Edge* (based on poems by A. E. Housman) for tenor, piano and string quartet.
Soloist, Paul Walti

October 22 — Debussy *Sonata* for flute, harp and viola.
Milhaud *Creation of the World* for piano and string quartet.

October 29 — Tansman *Suite Divertissement* for piano and string quartet.
Shostakovitch quartet

This is the second series of concerts to be presented by KGO and the Blue Network Company in the interest of finer music. The first, a series of eight concerts, was presented by KGO in cooperation with the San Francisco Opera Company under the direction of Mr. Gaetano Merola. The next series, to commence November fifth, will be presented in the interest of the San Francisco Symphony.

We will be happy to reserve tickets to these concerts. Will you kindly write or phone our Guest Relations Department.



Blue Network Company, Incorporated
Radio City, San Francisco
GRaystone 6565

OPERA BOX HOLDERS
SEASON 1942

MR. AND MRS. JAMES PARKS BRADLEY

MR. AND MRS. JOHN DAVIS BRADLEY

MR. AND MRS. GEO. T. CAMERON

MR. AND MRS. W. W. CROCKER

MRS. FRANK P. DEERING

MR. AND MRS. SIDNEY M. EHRLMAN

MR. AND MRS. MORTIMER FLEISHHACKER

DR. AND MRS. FRANK R. GIRARD

MR. AND MRS. CHARLES L. HARNEY

MRS. I. W. HELLMAN

MRS. MARCUS S. KOSHLAND

MR. AND MRS. FELIX S. MCGINNIS

MR. CAMPBELL MCGREGOR

MR. AND MRS. F. W. MCNEAR

MR. AND MRS. GAETANO MEROLA

MR. AND MRS. C. O. G. MILLER

MR. AND MRS. GEORGE A. POPE

MAYOR AND MRS. ANGELO J. ROSSI

SAN FRANCISCO OPERA GUILD

SAN FRANCISCO OPERA GUILD

MR. AND MRS. M. C. SLOSS

MRS. SIGMUND STERN



**ASTUTE
DISCRIMINATION**

. . . . marks men who choose Oxford Clothes.

Imported and domestic woolens, hand tailored with meticulous attention to detail that insures enduring style. Suits and topcoats from \$75.

Bullock & Jones

CUSTOM TAILORS · MEN'S WEAR · IMPORTERS · 340 POST STREET

VICTOR RECORDS



Gladys Swarthout



Ezio Pinza



Kirsten Flagstad

Hear these famous artists in your home



Beniamino Gigli



John Charles Thomas



Lauritz Melchior

Aida (In Italian)

Famous artists, chorus and orchestra of La Scala,
Milan. Victor Album M or DM 54..... **21.00**

Giuseppe Verdi

Aida—Highlights

Caruso - Ponselle - Martinelli - Rethberg and others
Victor Album M 303..... **6.30**

Giuseppe Verdi

Barber of Seville (Recordrama)

Reggiani - Browning - Ramirez - Alvary and others.
Victor Album M or DM 898..... **9.19**

G. Rossini

Symphony on a French Mountain Air

San Francisco Symphony Orchestra, Pierre Monteux,
Conductor, and Maxim Schapiro, Piano. Victor
Album DM 913..... **3.68**

D'Indy

Schwabacher-Frey

735 Market Street

San Francisco

ARTISTS OF *San Francisco* OPERA COMPANY



Allanese



Baron



Petina



De Paolis



Beattie



Engel



Antoine



Cartagna



Shiffeler



Osborne

Chanovsky



Carroll



★



Bell



Turner



★

Harvey


McCarthy



Palumbo

Wellman






San Francisco Tradition
Before the Opera...
 Dine in the exquisite Garden Court

After the Opera...
 Dance in the Rose Room...
 to the music of famous orchestras

**THE PALACE
HOTEL**

EDMOND A. RIEDER, *General Manager*

SINCE 1888—FIFTY-FOUR YEARS



FOR CAREFULLY DRESSED MEN
 SHIRTS — PAJAMAS — ROBES

D. C. HEGER
Importers and Shirt Makers

170 SUTTER STREET ☆ SAN FRANCISCO

In Los Angeles:
 426 WEST SIXTH STREET

In Paris:
 12 RUE AMBROISE THOMAS

San Francisco Opera Association

GAETANO MEROLA, GENERAL DIRECTOR
PAUL POSZ, Business Manager

Concert Attractions

SEASON 1942-43

Two Outstanding Concert Series

(Season Tickets Offer Savings Up to 40%)

OPERA HOUSE

MONDAY EVENING, NOVEMBER 2
JASCHA HEIFETZ

SUNDAY AFTERNOON, NOVEMBER 8
**CARMEN AMAYA
AND COMPANY**

THURSDAY EVENING, NOVEMBER 19
**BALLET RUSSE DE
MONTE CARLO**

SUNDAY AFTERNOON, DECEMBER 13
DON COSSACKS (Jaroff)

SUNDAY AFTERNOON, FEBRUARY 7
RICHARD CROOKS

SUNDAY AFTERNOON, FEBRUARY 14
MISCHA ELMAN

TUESDAY EVENING, APRIL 13
HELEN TRAUBEL

SUNDAY AFTERNOON, APRIL 18
JOHN CHARLES THOMAS

TUESDAY EVENING, APRIL 27
NELSON EDDY

SUNDAY AFTERNOON, MAY 9
ARTUR RUBINSTEIN

Season Tickets . . . Ten Events

	Price	Tax	Total		Price	Tax	Total
Orchestra	\$15.00	1.50	16.50	Balcony	\$ 7.00	.70	7.70
Grand Tier	12.50	1.25	13.75	Boxes (8 Seats)	120.00	12.00	132.00
Balcony Circle	7.00	.70	7.70	Boxes (6 Seats)	90.00	9.00	99.00

Evening Performances at 8:30 P. M. ::

Afternoon Performances at 2:30 P. M.

CURRAN THEATRE

SUNDAY AFTERNOON SERIES — 2:30 P. M.

NOVEMBER 15
DRAPER AND ADLER

NOVEMBER 22
LOTTE LEHMAN

JANUARY 3
JOSEF SZIGETI

JANUARY 10
ARTUR SCHNABEL

JANUARY 17
VRONSKY AND BABIN

JANUARY 24
DUSOLINA GIANNINI

JANUARY 31
TRAPP FAMILY SINGERS

FEBRUARY 21
LUBOSHTZ & NEMENOFF

March 7

ROBERT CASADESUS

Season Tickets . . . Nine Events

	Price	Tax	Total		Price	Tax	Total
Orchestra	\$13.50	1.35	14.85	Gallery	\$ 5.85	.59	6.44
Balcony (1st 7 Rows)	11.25	1.13	12.38	Boxes (6 Seats)	81.00	8.10	89.10
Balcony (Last 5 Rows)	7.65	.77	8.42	Loges (6 Seats)	81.00	8.10	89.10

TICKETS: SHERMAN, CLAY BOX OFFICE . . . EXbrook 8585



City of Paris

DOUGLAS 4500



PRESENTS

Christian

ORIGINALS

AN • EXCLUSIVE

EXCELLENT WINES

SINCE THE ELEGANT EIGHTIES



FUN IN THE SNOW IN
THE "ELEGANT EIGHTIES"
Scientific American, 1886



In the "Elegant Eighties," clothes were fussy. But foods were the finest. Men prided themselves on their palates.

It was for such a discriminating public that the founders of Italian Swiss Colony produced their first, superb California wines. And the reputation gained then has been maintained unbroken throughout sixty years, first by those founders, and now by their sons.

The Italian Swiss Colony name may be a small thing to look for on the wines you buy. But it's a big thing to find.

For it marks wines of unfailing soundness, rare bouquet, and rich flavor . . . wines you can serve with the pride that their sixty-year tradition of excellence deserves.

There is an Italian Swiss Colony Wine to suit every palate, every purse, and every occasion.

ITALIAN SWISS COLONY

781 BEACH STREET

SAN FRANCISCO



As seen in Vogue

THROUGHOUT AMERICA...leading jewelers recognize the individuality of Granat Mountings by entrusting the most costly diamonds and other precious gems to their guardianship. We invite your inspection of these renowned Mountings, complete with Granat selected and approved stones.

AMERICA'S LARGEST MANUFACTURING RETAIL JEWELERS

Granat Bros
SHREVE TREAT & EACRET

: : as Fugue is to Fudge

Your appreciation of Grand Opera evidences a sensibility to the finer things of life . . . such as Holland Boy Hot Chocolate, Double Rich Ice Cream Sodas or (if you're nearly famished) a Welder's Special. . . . Your horse and buggy will get you here in a jiffy!

**CONFECTAURANT SERVICE
DAILY UNTIL MIDNIGHT . . .
365 DAYS IN THE YEAR**



Blum's
POLK AT CALIFORNIA
SAN FRANCISCO



Quality Brazil Coffees

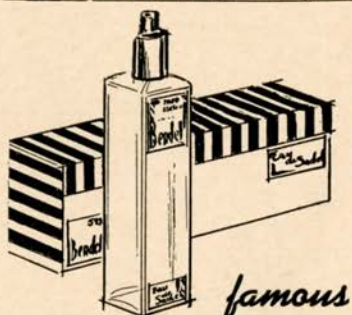
Assure Satisfaction
in the Cup

National Coffee

DEPARTMENT OF BRAZIL
RIO DE JANEIRO

210 Post St.
San Francisco

120 Wall St.
New York



**HENRI BENDEL
PERFUMES
COSMETICS**

are presented by

NELLY GAFFNEY, INC.

354 Post Street, San Francisco
314 Primrose Road, Burlingame

GUARANTOR MEMBERS

of the

SAN FRANCISCO OPERA ASSOCIATION

<p>Mr. and Mrs. C. Robert Adams Mrs. John Adler Mrs. Wallace M. Alexander Lucy H. and Edith W. Allyne Mrs. Leonora Wood Armsby Noel T. Arnold Mr. and Mrs. Frazer A. Bailey A. R. Baldwin Dr. and Mrs. Otto Barkan Irving Bartel Mr. and Mrs. R. S. Beall Mr. and Mrs. F. N. Belgrano, Jr. Mr. and Mrs. R. I. Bentley Mrs. Walter H. Bentley Mrs. Altess Berenson Dr. and Mrs. Tholow Binkley Mr. and Mrs. Newton Bissinger W. Harry Blatchly Mr. and Mrs. Louis Bloch Charles R. Blyth Mrs. Angus Gordon Boggs Mrs. Robert C. Bolton Louise A. Boyd H. Sewall Bradley Mrs. William Ellery Briggs Mr. and Mrs. Roy A. Bronson Mrs. Julia Fox Brooke George W. Brooks Mr. and Mrs. Arthur M. Brown, Jr. Mr. and Mrs. Louis C. Brown Mr. and Mrs. Ralph Brown Mrs. E. E. Brownell Mr. and Mrs. Starr Bruce Frank E. Buck Leonard W. Buck Thomas Buck Mr. and Mrs. John R. Cahill Dr. William Otis Callaway Mr. and Mrs. George T. Cameron Estelle Carpenter Mr. and Mrs. Selah Chamberlain, Jr. Mr. and Mrs. Charles A. Christin Herbert W. Clark</p>	<p>Mrs. Maurice Clark Mrs. Tobin Clark Mrs. Warren D. Clark Mr. and Mrs. John P. Coghlan Newton B. Coghlan Mr. and Mrs. George D. Cohn Mrs. Max M. Cohn Persis H. Coleman Mr. and Mrs. S. Waldo Coleman Mr. and Mrs. H. D. Collier Mr. and Mrs. Joseph J. Coney Mrs. Z. T. Coney Dr. and Mrs. Frederick C. Cordes Arthur S. Crites Templeton Crocker William W. Crocker George E. Crothers Mr. and Mrs. R. K. Davies Mr. and Mrs. Wilfrid L. Davis Davis-Schonwasser Mrs. Charles J. Deering Mrs. Frank P. Deering In Memoriam Frank P. Deering Mrs. Georges de Latour Frank H. Denman Mrs. Robert E. Devlin Mrs. Samuel L. Dinkelspiel Dewey Donnell Katharine Donohoe Mrs. F. A. Dorn Mrs. H. B. Drescher Mrs. Frances C. Edwards Mr. and Mrs. Albert L. Ehrman Mrs. Alfred Ehrman Mr. and Mrs. Sidney M. Ehrman Mrs. S. W. Ehrman John W. Elwood Mrs. Milton H. Esberg Milton H. Esberg Mrs. Louis Feigenbaum Mr. and Mrs. Mortimer Fleishhacker</p>
---	--

JOHN WALKER & CO.

111 MONTGOMERY STREET

GARFIELD 1132-33

WINES AND SPIRITS

All Standard Brands at Competitive Prices

FREE DELIVERY SERVICE: San Francisco, the Peninsula and
 Transbay Districts

CHARGE ACCOUNTS INVITED

After the Opera
REDWOOD ROOM
 at the *Clift*

Cardinal Room
 AT THE
ALEXANDER HAMILTON

El Prado
 AT THE **PLAZA**

OPERATED BY HARLEY HISE,
 BUILDING AND LOAN COMMISSIONER



Rosemary Glosz

announces

The removal of her Studio to
 Mark Hopkins Hotel

Rosemary Glosz, a Doctor of Music, an Opera and Concert Singer, carries her pupil from the beginning steps to the professional stage of the Opera and Concert.

Authentic interpretation of operatic roles—musicianship—languages.

Know once and for all what you are doing with your voice.

Audition without charge.

BELFAST



Manufactured
 by the makers
 of
BELFAST
 Dry
GINGER ALE

Famous
 Since 1877



*Sparkling
 Water*

PURE, wholesome and delightful to the taste, Belfast Sparkling Water is the ideal table beverage...it is *supreme* among the better mixers—heightens the flavor of other beverages and gives longer-lasting sparkle in the glass.

BELFAST BEVERAGE CO.

820 Pacific Avenue

DOuglas 0547

San Francisco

GUARANTOR MEMBERS *Continued*

John F. Forbes
Mr. and Mrs. Edward T. Ford
William Fries
Mrs. Nelly Gaffney
Maurice A. Gale
Mr. and Mrs. D. Lyle Ghirardelli
Mrs. Domingo Ghirardelli
A. P. Giannini
George B. Gillson
Dr. and Mrs. Frank R. Girard
Madame Rosemary Glosz
Celene and Lutie D. Goldstein
Louis S. Goldstein
Mrs. J. D. Grant
Mrs. C. G. Gratsos
Mr. and Mrs. Stuart N. Greenberg
Berthold Guggenheim
Mr. and Mrs. Gustav Gumpel
Miss Madeleine Haas
William Haas
Mr. and Mrs. Marshal Hale
Mr. and Mrs. R. B. Hale
Mr. and Mrs. Robert E. Hall
Eminel P. Halsted
W. F. Hanrahan
Mrs. Robert D. Harden
Mr. and Mrs. Charles L. Harney
Maurice E. Harrison
Mrs. Elystus Hayes
A. W. Hazen

Edith Hecht
Mrs. E. S. Heller
Mr. and Mrs. Walter D. Heller
Mrs. I. W. Hellman
Mrs. Robert B. Henderson
Mr. and Mrs. Leslie W. Hills
Mr. and Mrs. Harry H. Hilp
Carl Hoffman
George H. Holt
Osgood Hooker
Mrs. Herbert Hoover
Marian Huntington
*Mrs. Joseph Hyman
Mrs. James Irvine
Dr. S. Nicholas Jacobs
Louis M. Jefferys
Mrs. Ira Kahn
Mr. and Mrs. Henry J. Kaiser
Mr. and Mrs. Edward D. Keil
Mr. and Mrs. Charles Kendrick
Mr. and Mrs. Arthur Dale King
Percy L. King
R. W. Kinney
Mrs. Josephine R. Kleinjung
Mrs. William E. Kleinsorge
Mrs. Samuel Knight
Marion H. Kohn
Caroline Korbel
Elsa R. Korbel

SWANK

The ZEBRA ROOM

atop Nob Hill is not New York
but

an atmosphere of intimacy is born
again in San Francisco in the happy
environments, which surpasses the
effete East.

HUNTINGTON APARTMENT HOTEL

EUGENE N. FRITZ

VANESSI'S

498 BROADWAY



JOHANNA KRISTOFFY

Prima Donna Soprano

Thorough Vocal Instruction for Radio, Concert, Church
and Opera

Studio 740 PINE STREET

Phone EXbrook 4366

San Francisco Conservatory of Music, Inc.

Private Lessons in All Branches of Music. Artists' and Teachers' Courses with Diploma.

3435 SACRAMENTO STREET

25TH YEAR

WALNUT 3496

CITY TRANSFER CO.

SERVES SAN FRANCISCO OPERA CO.

WHY NOT YOU?

MOVING - STORAGE - SHIPPING

162 TURK STREET

PRospect 3060

HANCOCK BROS.

ROLL AND RESERVED SEAT TICKETS

25 JESSIE STREET

DOuglas 2191

San Francisco, California

STELLA SPRAGUE BEST

TEACHER OF VOICE

PUPILS PREPARED FOR

OPERA - CONCERT

Phone: GRaystone 2786

STUDIO 204, 2845 VAN NESS AVENUE



Before the Opera . . .

for formal or informal parties,
with food and beverages of the
choicest, you will enjoy the at-
tractive dining rooms and the
new Whitcomb Inn.

After the Opera . . .

the new Silver Top Cocktail
Lounge. Conveniently near—at
the Civic Center.

Hotel

WHITCOMB

Market at Eighth HUmiboldt 9600

GUARANTOR MEMBERS *Continued*

<p>Mrs. Jesse Koshland Mrs. Marcus S. Koshland Frederick J. Koster Mr. and Mrs. Edwin V. Krick Esther Kuenz A. G. Lang Mrs. Charles G. Lathrop Mr. and Mrs. J. B. Levison Mr. and Mrs. Samuel Lilienthal F. L. Lipman Mr. and Mrs. Norman B. Livermore Mrs. A. J. Lowrey Mr. and Mrs. Louis R. Lurie Mr. and Mrs. Edmunds Lyman Mr. and Mrs. James W. McAlister Mr. and Mrs. A. M. McCarty Mrs. Wm. H. McCormick Mrs. Mark L. McDonald Mrs. John McGaw Mr. and Mrs. Felix S. McGinnis Campbell McGregor Mrs. Alfred McLaughlin Henrietta Moffat Mrs. F. W. McNear Mrs. George P. McNear Peter Macris Mr. and Mrs. Grover A. Magnin Mr. and Mrs. J. W. Mailliard, Jr. Mr. and Mrs. Randolph W. Martenet Mr. and Mrs. A. C. Mattei Evelyn Mendessolle Mr. and Mrs. Gaetano Merola Mr. and Mrs. H. C. Merritt, Jr. Mrs. George H. C. Meyer C. F. Michaels Mr. and Mrs. C. O. G. Miller Mr. and Mrs. Robert Watt Miller J. K. Moffitt Mr. and Mrs. Kenneth Monteagle F. H. Montgomery Mrs. Joseph A. Moore Laura Musto Guido Musto Mr. and Mrs. A. E. Nelson Mr. and Mrs. Ralph R. Nelson Julia M. Neppert H. D. Newhouse Mrs. Alfred Newman Mr. and Mrs. John Francis Neylan Mary L. Obujen Benjamin J. Older Mr. and Mrs. Charles R. Page Mrs. S. H. Palmer Mr. and Mrs. Parmer Fuller, Jr. Dr. Sadie D. Patek Mrs. Grattan Phillips Mr. and Mrs. G. Pisani Aram Poladian Mrs. George A. Pope Mrs. Ashton Potter Mr. and Mrs. J. Sheldon Potter Mr. and Mrs. Stanley Powell</p>	<p>Mrs. Carl Raiss Elizabeth H. Raymond A. S. Rees Mrs. Achille Roos Mr. and Mrs. George H. Roos Col. and Mrs. Robert A. Roos Mr. and Mrs. John N. Rosekrans Leland S. Rosener Mrs. Angela Wing Roth Mr. and Mrs. William P. Roth Mr. and Mrs. W. Lansing Rothschild W. B. Ryan Horace H. Scales Mr. and Mrs. Carl Schaubye Else Schilling Dr. and Mrs. Walter Schilling Mrs. E. G. Schmiedell Mr. and Mrs. Albert E. Schwabacher Mrs. Frank Schwabacher Mr. and Mrs. James H. Schwabacher Mrs. Louis A. Schwabacher H. S. Scott Mr. and Mrs. Richard H. Shainwald Mr. and Mrs. R. S. Shainwald F. R. Sherman Mrs. Edgar Sinton Charles W. Slack Mrs. Leon Sloss Judge and Mrs. M. C. Sloss Stanley C. Smallwood Charles Watt Smith G. Willard Somers Mrs. E. B. Stanwood Mr. and Mrs. Ralph J. A. Stern Mrs. Sigmund Stern William Stout Dr. and Mrs. John Philip Strickler John Dunlop Strickler III Benka Dunlop Strickler Mr. and Mrs. B. Victor Sturdivant Mr. and Mrs. Walter H. Sullivan Mr. and Mrs. Alfred Sutro Dr. and Mrs. David Armstrong Taylor George C. Thierbach Mrs. Myron I. Thomas Mr. and Mrs. Morley Thompson Mr. and Mrs. C. R. Tobin Mr. and Mrs. Ernest J. Torregano Helen Towne Mrs. Alfred S. Tubbs Mr. and Mrs. Nion Tucker Mr. and Mrs. Daniel G. Volkmann Mr. and Mrs. George Wagner Mrs. C. R. Walter Whitney Warren, Jr. Mr. and Mrs. Michel D. Weill Robert L. Wiel Stephen Williams Mrs. Clinton E. Worden Mr. and Mrs. F. A. Zane Mrs. V. Zaruba Mr. and Mrs. J. D. Zellerbach *Deceased</p>
---	---



H. V. Kaltenborn Says

*"The food leaves even a
commentator speechless!"*

GEORGE MARDIKIAN'S

cuisine is famous the world over. Dinners and
a la carte. Cocktail lounge. Before and after
the opera. Open from 4 P. M. till midnight.

Every night is celebrity night at

O M A R K H A Y Y A M ' S

CONTRIBUTING MEMBER ORGANIZATIONS

Baldwin Piano Company
Blue Network Company, Inc.
Blums
Borden's Dairy Delivery Company
Bullock & Jones Co.
City of Paris
City Transfer and Storage Company
Columbia Concerts, Inc.
H. S. Crocker Company, Inc.
The Emporium
Julius Eppstein
Fairmont Hotel
Goldstein and Company
Granat Bros.
Gump's
Hastings
Hale Bros.
Hotel Mark Hopkins
Josephs Florists
Carolyn Kelsey
K J B S
K Y A

H. Liebes & Co.
Livingston Bros.
I. Magnin & Co.
Joseph Magnin Co.
Maison Mendessolle
V. C. Morris
Musicians' Union
National Broadcasting Co.
O'Connor, Moffatt & Co.
Palace Hotel
Pisani Printing & Publishing Co.
Ransohoffs
Roos Bros.
Hotel St. Francis
Schwabacher Frey & Company
Sherman, Clay & Co.
Shreve & Company
Sommer & Kaufmann
Weinstein & Company
The White House
Yellow Cab Co.

QUALITY

Style . . . and a reputation in the making
of smart Men's Clothing . . .
and Lady's Tailored Suits

WILLIAMS AND BERG CO.

GENERAL ENGLISH TAILORS

110 SUTTER STREET

FRENCH AMERICAN BANK BUILDING

BERTHA RIESE ADLER

(Mrs. Albert S. Adler)

NOTARY PUBLIC
SPECIAL CALLS TO HOMES OR BUSINESS

82 SUTTER STREET
Res. Hotel Richelieu

EXbrook 9681
ORdway 4711

Wartime Suggestions

YOUR WILL . . . How does war affect your estate . . . through changes in taxes, investment values, family situations? Why not review your will now with your attorney?

YOUR INSURANCE . . . Do you consider the coverage adequate on yourself, your property, and your estate?

YOUR INVESTMENTS . . . War conditions make investing yet more complicated . . . but you can get cooperation from your bank . . . at small cost, under an Agency Account.

**BUY WAR BONDS FOR PATRIOTISM AND
FOR INVESTMENT**

Established 1852

**Wells Fargo Bank
& Union Trust Co.**

SAN FRANCISCO

WELLS FARGO OFFICE • MARKET AT MONTGOMERY
UNION TRUST OFFICE • MARKET AT GRANT AVENUE

Member F. D. I. C.

CLAUDETTE COLBERT is doing a grand job in the Volunteer Army Canteen Service (VACS to the boys)
☆ You should see her starring in the new Paramount Picture "PALM BEACH STORY" ☆



KEEP 'EM SATISFIED WITH *Chesterfield*

Milder.. Cooler.. Better-Tasting Cigarettes

... that's what smokers ask for .. and that's CHESTERFIELD. *Milder* when you smoke a lot.. *Cooler* when the going's hot .. and *Better-Tasting all the time!* Buy CHESTERFIELDS by the carton and treat the boys and yourself to more smoking pleasure than you've ever known ...

They Satisfy

