

Tristan und Isolde

1939

Friday, October 20, 1939 7:45 PM
Thursday, November 2, 1939 7:45 PM

SFO_PUB_01_SFO_1939_12

Publications Collection

San Francisco Opera Archives

SEVENTEENTH ANNUAL SEASON



GAETANO MEROLA . . . GENERAL DIRECTOR

OCTOBER 13, NOVEMBER 4, 1939

17

WAR MEMORIAL OPERA HOUSE

Livingston Bros.

GRANT AVENUE AT GEARY STREET



LIVINGSTON'S GOWNS

YOU FOR THE

Opera

Part of the opera tradition
in San Francisco . . . your
opera gown, wrap or furs
from the Livingston Shop.



Complete selection of

OPERA JEWELRY

H A N D B A G S

HAIR ORNAMENTS

A GOOD NAME IS STILL WORTH HAVING IN THE CLOTHES YOU WEAR



★
Oxford Clothes
Finest Custom Quality

Exclusive with BULLOCK & JONES in San Francisco

All over America today there is a revival of Public Interest in fine reputations. . . . Good names are coming back . . . who makes *your* clothes still counts . . . and who sells *your* clothes counts, too. . . . Men have discovered in recent years that an old and honorable name is still the soundest guide to STYLE, the surest way to QUALITY, the safest road to VALUE, the *only dependable protection* against the *indifference* that thinks in terms of *sales* instead of *customer satisfaction*.

BUSINESS SUITS

\$65

and upward

TOPCOATS • SPORTS WEAR • DRESS WEAR

ESTABLISHED 1853

Bullock & Jones
Custom Tailors • Men's Wear • Importers

340 POST STREET

Swift

LIMITED

WHY ACCEPT THE ORDINARY WHEN SWIFT ECONOMY OFFERS THE SUPERB FASHIONING AND NEEDLEWORK OF AMERICA'S OUTSTANDING CRAFTSMEN FOR SO REASONABLE A SUM?

Swift Suits, \$50 upwards



280 POST STREET



**METROPOLITAN
SYMPHONY
OF LIVING**



The Fairmont offers a program of living without peer, for a season without end. Carefree comfort is the motif, and dining surprises with delightful variations. Suite appointments introduce convincing harmonies, and a trained staff orchestrates housekeeping details in a key of uninterrupted enjoyment. Traditional hospitality wields the baton. Make permanent reservations now. We welcome your inquiry for details.

The
FAIRMONT
Hotel

CENTRAL LOCATION . . . GARAGE IN BUILDING

GEO. D. SMITH, *General Manager*



GAETANO MEROLA
General Director
SAN FRANCISCO OPERA COMPANY

Baldwin



The world's most honored piano
is the piano for your home or studio

Grand Prix, Exposition Universelle Internationale, Paris, 1900, with Decoration of the French Legion of Honor.

Grand Prize, Louisiana Purchase Exposition, St. Louis, 1904.

Grand Prize, World Exposition, London, 1914.

Papal Medal, Rome, 1923.

Official Piano of the Chicago Civic Opera Company, 1922-1932.

Official Piano of the Century of

Progress, Chicago, 1933-1934.

Official Piano of the Texas Centennial Exposition, Dallas, 1936.

Official Piano for the Cincinnati Symphony Orchestra, Chicago Grand Opera Company, and the Pittsburgh Symphony Orchestra.

Official Piano for more than 200 Radio Broadcasting Stations.

Official Piano for the Golden Gate International Exposition, 1939.



310 SUTTER STREET . . . SAN FRANCISCO

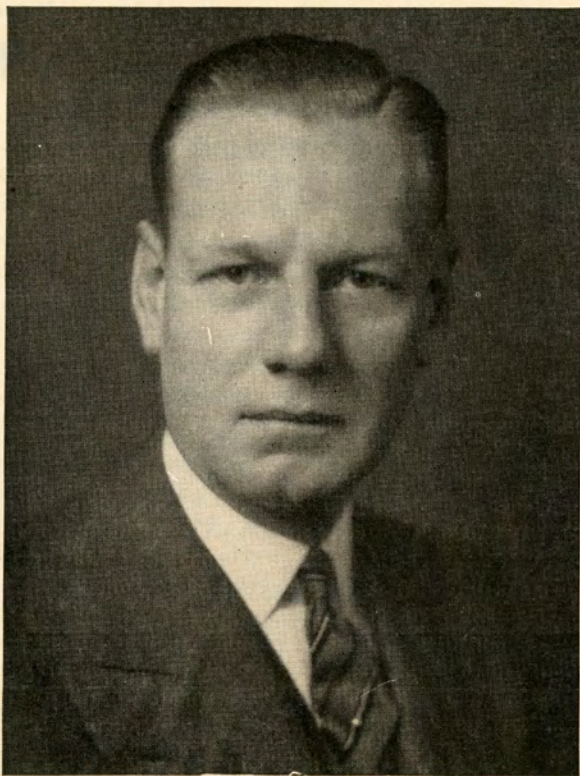
Some of the
Artists
of today
who find the
Baldwin
the perfect
instrument
for the
expression
of their art.

Dwight Anderson
Frances Antoine
Wilhelm Bachaus
Harold Bauer
Moissaye Boguslawski
Jussi Bjoerling
Lucrezia Bori
Jeanne Behrend
Bela Bartok
Mario Chamlee
Alfredo Casella
Karin Dayas
Jose Echaniz
Cecille de Horvath
David Earle
Severin Eisenberger
Daniel Ericourt
Ruda Firkusny
Frank Farrel
Arnold Gabor
Walter Gieseking
Boris Golschmann
Eugene Goossens
William Harms
Irma Schenuit Hall
Stephan Hero
Jose Iturbi
Amparo Iturbi
Edward Johnson
Breandan Keenan
Alexander Kelberine
Alexander Kipnis
Wiktor Labunski
Ralph Leopold
Josef Lhevinne
Rosina Lhevinne
Alfred Mirovitch
Edith Mason
Grace Moore
Charles Naegele
Louis Persinger
Lily Pons
Rosa Raisa
Giacomo Rimini
Moriz Rosenthal
Tito Schipa
E. Robert Schmitz
Joseph Szigeti
Leonard Shure
Ruth Slenczynski
Helen Traubel
Alexander Tansman
Paul Wittgenstein
Victor Wittgenstein
Samuel Yaffe
Franciszek Zachara

Partial list orchestra leaders and radio stars

Freddy Bergin
Nat Brandwynne
D'Artega
Eddie Davis
Meyer Davis
Al Dietzel
Jimmy Downey
Eddie Duchin
Ernie Holst
Dick Gasparre
Benny Goodman
Little Jack Little
Vincent Lopez
Enric Madriguera
Freddy Martin
Georges Metaxa
Ozzie Nelson
Leo Reisman
Harry Rosenthal
Freda Sanker
Lee Simms
Phil Spitalny
Bud Waples
Paul Whiteman

San Francisco
OPERA ASSOCIATION



Officers

ROBERT W. MILLER
PRESIDENT

ARTHUR MERRILL BROWN, JR.
SECOND VICE-PRESIDENT

HORACE B. CLIFTON
FIRST VICE-PRESIDENT

EDWARD F. MOFFATT
SECRETARY-TREASURER

Board of Directors

CHARLES R. BLYTH
ARTHUR MERRILL BROWN, JR.
GEORGE T. CAMERON
HORACE B. CLIFTON

WILLIAM W. CROCKER
MORTIMER FLEISHHACKER
TIMOTHY HEALY

ROBERT W. MILLER
JOHN FRANCIS NEYLAN
RICHARD M. TOBIN
NIDN R. TUCKER

Municipal Concerts

ART COMMISSION OF SAN FRANCISCO

OTTORINO RONCHI
President

MAYOR ANGELO J. ROSSI
Ex-Officio

JOS. H. DYER, JR.,
Secretary

WILL PRESENT THE

SAN FRANCISCO SYMPHONY ORCHESTRA

WITH GUEST ATTRACTIONS SEASON OF 1940

PIERRE MONTEUX, *Conductor*

Civic Auditorium

FRIDAY NIGHT, JANUARY 12

LEOPOLD STOKOWSKI

Guest Conductor, San Francisco Symphony Orchestra

FRIDAY NIGHT, MARCH 1

AMERICAN PREMIERE

CHRISTOPHE COLOMB

An Historical Musical Epic by Darius Milhaud featuring Perry Askam, baritone; Vera Osborne, soprano, and William Horn, tenor, with Municipal Chorus, Hans Leschke, Director, and San Francisco Symphony, Monteux, Conductor

TUESDAY NIGHT, MARCH 12

LOTTE LEHMANN

Distinguished Viennese Soprano, with San Francisco Symphony and Monteux

TUESDAY NIGHT, APRIL 2

JOHN CHARLES THOMAS

Baritone, Metropolitan Opera Company, with San Francisco Symphony and Monteux

TUESDAY NIGHT, APRIL 9

JOSEF HOFMANN

World Famous Pianist with San Francisco Symphony and Monteux

Opera House

TUESDAY NIGHT, JANUARY 30 TO SATURDAY NIGHT, FEBRUARY 3

BALLET RUSSE de MONTE CARLO

Six Performances . . . New Ballets . . . New Stars . . . New Decor
with San Francisco Symphony and Monteux

J. EMMET HAYDEN, *Chairman of Music Committee*

SEASON TICKETS NOW ON SALE

BOX OFFICE: SHERMAN, CLAY & COMPANY
SUTTER AND KEARNY STREETS

PHONE EXBROOK 8585

Board of Governors

WALLACE M. ALEXANDER	MORTIMER FLEISHHACKER	ROBERT W. MILLER
ALBERT M. BENDER	A. P. GIANNINI	EDWARD F. MOFFATT
WILLIAM H. BERG	JOSEPH D. GRANT	GUIDO MUSTO
P. A. BERGEROT	MARSHALL HALE	MRS. JOHN FRANCIS NEYLAN
CHARLES R. BLYTH	REUBEN B. HALE	JOHN FRANCIS NEYLAN
J. BRENDAN BRADY	FREDERIC W. HALL	ETTORE PATRIZI
H. SEWALL BRADLEY	MRS. LAWRENCE W. HARRIS	RALPH L. PHELPS
ARTHUR MERRILL BROWN, JR.	MRS. ROBERT H. HAWLEY	MRS. M. C. PORTER
W. N. BURKHARDT	J. EMMET HAYDEN	MRS. STANLEY POWELL
GUIDO CAGLIERI	TIMOTHY HEALY	STANLEY POWELL
MRS. GEORGE T. CAMERON	CHARLES H. KENDRICK	ANGELO J. ROSSI
GEORGE T. CAMERON	SAMUEL KNIGHT	A. SBARBORO
CHARLES A. CHRISTIN	MRS. MARCUS S. KOSHLAND	FRED R. SHERMAN
HORACE B. CLIFTON	LEWIS A. LAPHAM	PAUL SHOUP
TEMPLETON CROCKER	MRS. STINE LEIS	MRS. M. C. SLOSS
W. W. CROCKER	J. B. LEVISON	MRS. SIGMUND STERN
GEORGE E. CROTHERS	MISS EDITH LIVERMORE	M. C. THRELKELD
MISS MARY C. DUNHAM	M. E. LOMBARDI	RICHARD M. TOBIN
SIDNEY M. EHRMAN	MISS RUTH W. LORING	NIDN R. TUCKER
MRS. CHARLES N. FELTON	MISS SALLIE MAYNARD	RANDOLPH C. WALKER
MRS. WILLIAM M. FITZHUGH	MRS. C. D. G. MILLER	WHITNEY WARREN, JR.
GEORGE WASHINGTON BAKER, JR.	MRS. DAVID ARMSTRONG TAYLOR	

War Memorial Opera House

OWNED AND OPERATED BY CITY AND COUNTY OF SAN FRANCISCO

BOARD OF TRUSTEES

RALPH J. A. STERN PRESIDENT	HORACE B. CLIFTON VICE-PRESIDENT	W. C. DOUGLAS SECRETARY TO THE BOARD
JUDGE THOMAS M. FOLEY	RAMSAY MORAN	COL. WILLIAM H. TOBIN
FREDERICK J. KOSTER	ALLISON E. SCHOFIELD	DR. ALANSON WEEKS
HARRY A. MILTON	JOHN J. SULLIVAN	SELBY OPPENHEIMER MANAGING DIRECTOR OF THE WAR MEMORIAL
	J. H. THRELKELD	

BETWEEN ACTS VISIT THE SAN FRANCISCO OPERA GUILD LIBRARY—MUSEUM
IN LOBBY OPPOSITE COURT ENTRANCE

LIBRETTOS OF OPERAS ON SALE IN FOYER . BUFFET SERVICE IN BASEMENT
PROMENADE . HEAD SETS FOR THE DEAF ARE AVAILABLE AT TABLE IN
MAIN FOYER. ATTENDANT WILL CONNECT WITH SEAT LOCATION UPON REQUEST.
FOR LOST AND FOUND INFORMATION, INQUIRE AT CHECK ROOM NO. 1
WILLIAM A. MEADE, DIRECTOR OF HOUSE SERVICE

A MAGNIFICENT YEAR

FAIR year has been a good year for San Francisco. It brought to us a splendid exposition; a magnificent playground wherein many activities and outstanding events were held. It gave opportunity for creative work, magnificent structures and splendid electrical displays; a background of true beauty. Created by floral art, waterways and many fountains, symphonies of nature were displayed in a prolific abundance. It gave to the Costumer the opportunity to place in such a background so many of our magnificent costumes. ¶ We had the pleasure of supplying all costumes for *Calvacade*, that outstanding success depicting the history of western frontiers. ¶ It gave us the opportunity of costuming the magnificent production of *Joan of Arc*; the beautiful and tuneful production of *Cavalleria Rusticana* for Italian Day; the Children's Theater production of *Lost Treasure*; the Druids' celebration held early in the month of June; the Improved Order of Redmen's American Pageant; the Native Sons' annual conclave; the Scottish Day's celebration; the Sons of Italy celebration; the Catholic Ladies' Society outstanding production of *St. Francis of Assisi*; and many others. ¶ This year we added many to our list of patrons, notably the Hollywood Bowl with their outstanding productions of *Aida* directed by Armando Agnini, and acclaimed to be one of the most spectacular and magnificent costumed productions of this opera ever given; also the entirely new opera to the Pacific Coast of *Prince Igor*, in which the costuming played no small part. ¶ Our many old friends were still with us, so that, all in all, we are thankful to the people of San Francisco for having made it possible for the Fair to be a reality. We are thankful that

with the many outside activities the Board of Directors of the San Francisco Opera Association saw fit, in the face of so much adversity, to continue the San Francisco Grand Opera Season. We are most happy once again to acknowledge the kind consideration of being chosen the costumer for this season. Many of the foremost singers have acclaimed our costumes. ¶ We not only thoroughly appreciate but congratulate ourselves on the many friends we have in the City of San Francisco who have kept this firm alive. To serve our public, has always been our motto, and we trust that when costumes are needed for either productions or for socials, you will always remember—

GOLDSTEIN & CO. •

Established 1868
989 MARKET ST.
GARfield 5150

Choral Ensemble

HORACE B. CLIFTON
CHAIRMAN, CHORUS COMMITTEE

SOPRANOS AND CONTRALTOS

SUE BELL BROWNE	ELIZABETH HACKETT	NEVART LEVON	DOROTHY ROBERTS
LAURRAN CHINN	JEAN HARTMAN	ROSE LIEBER	KATHERINE STEED
JAYNE COZZENS	CLARA HETRICK	LEILA LOERA	LILLIAN SWANSON
LOUISE DALY	HILDA HERZ	MARJORIE MCCARTHY	MICHELINA TERRANOVA
LELIA GAMBI	MARION KILOH	DOROTHY MCINTYRE	DOROTHY THOMPSON
HARRIET GRIFFITH	LUCILLE KIRTLEY	NANCY MARTIN	EDITH WISHART WALTHER
MONO LO-VOTO GRINE	HELEN KUMMERFELD	DOROTHY MOSHER	HELENE ZUMWALT
	KATHLEEN LAWLOR	MARGARET RITTER	

TENORS, BARITONES AND BASSES

EVARISTO ALIBERTINI	MICHAEL GOLICK	DONALD LAYMAN	JUAN NAVARRO
ALTON BERNHARD	ARTHUR COLIN HARVEY	ALFRED LEVI	STANLEY NOONAN
LOUIS BRAUNSTEIN	MILTON HAY	PAUL LIEBER	ALLEN SCHMIDLING
MAYNARD BURGARD	EARL HENTZY	MAX LORENZINI	MICHAEL SUSOFF
JOHN J. COLLINS	PETER HELFERT	ALLEN LOUW	FREDRICK WAHLIN
AMERIGO DEL GRANDE	WILLIAM HICKS	EDWARD MCKENNA	PAUL WALTJ
PAUL GUENTER	NICKOLAS KEMARSKY	DON E. J. MARQUIS	EDWARD WELLMAN
MAX EDWARDS	CLIFTON W. KEMPER	CARLO MENUCCI	MALCOLM YOUNGS
ROY GARDEN	FREDERICK KOENS	ALFRED MYERS	

COSTUMES AND WIGS BY GOLDSTEIN & CO.

Ballet

NION R. TUCKER
CHAIRMAN, BALLET SCHOOL COMMITTEE

PRIMA BALLERINA
JANET REED

EXECUTIVE STAFF

WILLAM CHRISTENSEN
*Choreographer and
Director San Fran-
cisco Opera Ballet
School*

DEANE CROCKETT
Assistant Director

FRANKLYN SMITH
Public Relations

SOLOISTS

PEGGY BATES
JEAN DALZIEL
ZOYA LEPORSKY
JACQUELINE MARTIN
ZELDA NERINA
JULIA RANDALL
MARIA TOVANYA
MERLE WILLIAMS
RONALD CHETWOOD

PRINCIPAL DANCERS

MISSSES	MESSRS.
MADELINE DEL MOTTE	DANIEL HOCTOR
BETTE JEAN GERLACH	ROBERT KEEVER
MATTLYN GEVURTZ	HAROLD LANG
JEAN HAYES	FRANK MARASCO
ZOE DEL LANTIS	EARL RIGGINS
NORMA NEILSEN	FREDERICK STAVER
ROSALIE PROSCH	NORMAN THOMPSON
RUTH RICKMAN	
JEANETTE TUCKER	
BARBARA WOOD	



FOR MUSIC LOVERS

Special Buffet Dinner
before the Opera in the
Palm Court.

and

Supper Dancing after the
Opera in the Rose Room
Bowl.

EDITH LORAND'S Enchanting Music . . .

The Palace Hotel

San Francisco

◆

PROUD TRADITIONS

STE . . . the Opera . . . and jewels by
SHREVE, TREAT & EACRET! Both
brilliantly woven into the romantic, glam-
orous pattern that is San Francisco.

SHREVE, TREAT & EACRET

PEARL AND GEM SPECIALISTS ★ JEWELERS AND SILVERSMITHS
ONE THREE SIX GEARY STREET

◆

ARTISTS OF *San Francisco* OPERA COMPANY



Lauritz Melchior



Kirsten Flagstad



Lily Pons



Tito Schipa



Elisabeth Rethberg



Lawrence Tibbett



Giovanni Martinelli



Jarmila Novotna



Alexander Kipnis



Kathryn Meisle



Hertha Glatz



Julius Huehn



Fred Destal



George Cehanovsky



Ludovico Oliviero



Hans Clemens

SAN FRANCISCO SYMPHONY ORCHESTRA

PIERRE MONTEUX, Conductor
LEONORA WOOD ARMSBY, Managing Director
HOWARD K. SKINNER, Business Manager

OPERA HOUSE --- TWENTY-EIGHTH SEASON

TWELVE FRIDAY AFTERNOON AND SATURDAY NIGHT CONCERTS

Dates and Guest Artists

FRI., DEC. 8 · SAT., DEC. 9
OPENING CONCERT PAIR

FRI., DEC. 15 · SAT., DEC. 16
IGOR STRAVINSKY
GUEST CONDUCTOR

FRI., JAN. 5 · SAT., JAN. 6
ORCHESTRAL PROGRAM

FRI., JAN. 19 · SAT., JAN. 20
SERGEI RACHMANINOFF
PIANIST

FRI., JAN. 26 · SAT., JAN. 27
JASCHA HEIFETZ
VIOLINIST

FRI., FEB. 9 · SAT., FEB. 10
JUSSI BJOERLING
TENOR

FRI., FEB. 16 · SAT., FEB. 17
ORCHESTRAL PROGRAM

FRI., MAR. 8 · SAT., MAR. 9
ALEC TEMPLETON
PIANIST

FRI., MAR. 15 · SAT., MAR. 16
ORCHESTRAL PROGRAM

FRI., MAR. 29 · SAT., MAR. 30
CARLOS CHAVEZ
GUEST CONDUCTOR

FRI., APR. 12 · SAT., APR. 13
WALTER GIESEKING
PIANIST

FRI., APR. 19 · SAT., APR. 20
CLOSING CONCERTS
WITH COOLIDGE QUARTET



IGOR STRAVINSKY



ALEC TEMPLETON



WALTER GIESEKING



CARLOS CHAVEZ



JASCHA HEIFETZ



JUSSI BJOERLING



SERGEI RACHMANINOFF

SAN FRANCISCO SYMPHONY ORCHESTRA

SEASON TICKETS FRIDAY SERIES (TWELVE CONCERTS)

ORCHESTRA:

First Five Rows . . .	\$26.40
Next Fifteen Rows . . .	33.00
Last Eight Rows . . .	26.40

GRAND TIER:

First Three Rows . . .	33.00
Next Two Rows . . .	26.40

DRESS CIRCLE:

First Five Rows . . .	19.80
Next Six Rows . . .	13.20

BALCONY CIRCLE . . . 10.20

BALCONY . . . 6.60

BOXES . . . 39.60

TAX EXEMPT

*



PIERRE MONTEUX

SEASON TICKETS SATURDAY SERIES (TWELVE CONCERTS)

ORCHESTRA	\$15.00
GRAND TIER	15.00
DRESS CIRCLE	10.20
BALCONY CIRCLE	10.20
BALCONY	6.60
BOXES	18.00

TAX EXEMPT

*

SEASON TICKETS NOW ON SALE
OPERA HOUSE BOX OFFICE



COOLIDGE QUARTET



PLAN NOW EXCITING WINTER HOLIDAYS

Have you ever joined in one of Yosemite's ice carnivals—staged with mile-high granite walls for a backdrop? Or thrilled to the tinkle of sleighbells in the still white night? Or skimmed over long fast ski slopes—returning to the cheery comfort of the Ahwahnee Hotel's blazing log-fire? Experiences not to be missed!

A complete winter sports program—with ideal weather, sheltered from icy winds—and living facilities on a par with the magnificent, world-famed setting! Make the distinguished Ahwahnee—or pleasant Yosemite Lodge—your address for a week or two. This year it's extra easy to come, with the All-Year Highway completed.

This year . . . special all-expense rates for a week of winter sports.

For skiers, every kind of terrain—the "upski"—a comfortable ski house—and California's oldest and best Ski School.

Yosemite

Reservations:

39 Geary Street EXbrook 3906

All-Year Highway now completely rebuilt!

For skaters—the West's largest outdoor rink—60,000 square feet of natural ice—a competent staff of instructors.



Repertoire

Regular Series

- MANON (*Massenet*) *Friday Night, October 13, at 8:00*
With Sayao, Schipa, Bonelli, Cordon, Ferrier, Cehanovsky, Ritter, Edwards,
Noonan. MEROLA, Conductor.
- DIE WALKURE (*Wagner*) *Tuesday Night, October 17, at 7:45*
With Lawrence, Flagstad, Melchior, Meisle, Huehn, Cordon, Sharpe, Votipka,
Ponitz, Paulee, Browne, Glatz, Avakian, Cornish. LEINSDORF, Conductor.
- MADAMA BUTTERFLY (*Puccini*) *Wednesday Night, October 18, at 8:15*
With Novotna, Bartlett, Glatz, Huehn, Oliviero, Shiffeler, Harvey, Hackett,
Noonan, Alibertini. PAPI, Conductor.
- TRISTAN UND ISOLDE (*Wagner*) *Friday Night, October 20, at 7:45*
With Melchior, Flagstad, Meisle, Kipnis, Huehn, Cehanovsky, Oliviero, D'Angelo,
George. McARTHUR, Conductor.
- RIGOLETTO (*Verdi*) *Monday Night, October 23, at 8:15*
With Tibbett, Pons, Jagel, Glatz, Cordon, Shiffeler, Oliviero, Cehanovsky,
Wellman, Chinn, Votipka, Lawlor. PAPI, Conductor.
- LUCIA DI LAMMERMOOR (*Donizetti*) *Wednesday Night, October 25, at 8:15*
With Pons, Schipa, Ballarini, Cordon, Votipka, Oliviero, George. PAPI, Conductor.
- OTELLO (*Verdi*) *Friday Night, October 27, at 8:00*
With Martinelli, Tibbett, Rethberg, Oliviero, Votipka, Walti, D'Angelo,
Cehanovsky, Navarro. MEROLA, Conductor.
- LA TRAVIATA (*Verdi*) *Monday Night, October 30, at 8:15*
With Novotna, Martini, Tibbett, Oliviero, Cehanovsky, Votipka, Ritter, Cordon,
D'Angelo, Alibertini. MEROLA, Conductor.
- BARBER OF SEVILLE (*Rossini*) *Wednesday Night, November 1, at 8:15*
With Pons, Martini, Bonelli, D'Angelo, Cordon, Glatz, Oliviero. PAPI, Conductor.
- FIDELIO (*Beethoven*) *Friday Night, November 3, at 8:15*
With Flagstad, Melchior, Destal, Kipnis, Boerner, Clemens, Huehn, Garden,
Walti. LEINSDORF, Conductor.

Popular Series

- I PAGLIACCI (*Leoncavallo*)
With Stinson, Boerner, Bonelli, Oliviero, Cehanovsky. MEROLA, Conductor.
followed by
- CAVALLERIA RUSTICANA (*Mascagni*) *Saturday Night, October 21, at 8:00*
With Giannini, Jagel, Avakian, Cehanovsky, Votipka. PAPI, Conductor.
- DIE WALKURE (*Wagner*) *Tuesday Night, October 24, at 7:45*
With Flagstad, Lawrence, Melchior, Glatz, Destal, Cordon, Sharpe, Votipka,
Ponitz, Paulee, Browne, Avakian, Cornish. McARTHUR, Conductor.
- RIGOLETTO (*Verdi*) *Sunday Matinee, October 29, at 2:30*
With Tibbett, Pons, Jagel, Cordon, Glatz, Shiffeler, Wellman, Oliviero, Chinn,
Cehanovsky, Votipka, Lawlor. PAPI, Conductor.
- IL TROVATORE (*Verdi*) *Saturday Night, November 4, at 8:00*
With Rethberg, Martinelli, Meisle, Bonelli, Cordon, Votipka, Oliviero, Alibertini.
PAPI, Conductor.

Extra Performance

- MADAMA BUTTERFLY (*Puccini*) *Friday Afternoon, November 3, at 2:00*
With Novotna, Bartlett, Glatz, Ballarini, Oliviero, Shiffeler, Harvey, Hackett,
Noonan, Alibertini. PAPI, Conductor.

STUDENT PERFORMANCE sponsored by SAN FRANCISCO OPERA GUILD, INC.



*Mural Room
Enchantment*

Dinner and supper
dancing to the music of
America's premier or-
chestras... a Mural Room
thrill not soon forgotten

HOTEL ST. FRANCIS
OVERLOOKING UNION SQUARE · MANAGEMENT DAN E. LONDON

COLUMBIA CONCERTS CORPORATION

of Columbia Broadcasting System is the exclusive manager for the following artists
appearing with the San Francisco Opera Company, Season 1939:

Sopranos: LILY PONS . . . MAFALDA FAVERO . . . CHARLOTTE BOERNER
Contralto: KATHRYN MEISLE
Tenors: NINO MARTINI . . . ALESSANDRO ZILIANI
Baritones: LAWRENCE TIBBETT . . . RICHARD BONELLI . . . JULIUS HUEHN
SALVATORE BACCALONI . . . NORMAN CORDON

☆

In addition, the following artists under the same management will appear in the
San Francisco concert season of 1939-40:

Soprano: HELEN JEPSON
Baritones: NELSON EDDY . . . LAWRENCE TIBBETT
Pianists: JOSE ITURBI . . . BARTLETT and ROBERTSON
Violinist: YEHUDI MENUHIN
Dance Attractions: DEVI DJA and her Bali and Java Dancers
JOOSS EUROPEAN BALLET

☆

COLUMBIA CONCERTS CORPORATION
of
COLUMBIA BROADCASTING SYSTEM

113 WEST 57TH STREET · NEW YORK CITY

HOLLYWOOD OFFICE: COLUMBIA MANAGEMENT OF CALIFORNIA, INC., Columbia Square,
Hollywood, California.

CALIFORNIA REPRESENTATIVE: L. E. BEHYMER, 705 Auditorium Bldg., Los Angeles, California.

CONCERT DIVISION

San Francisco Opera Association

GAETANO MEROLA, GENERAL DIRECTOR

OPERA HOUSE ATTRACTIONS

REGULAR CONCERT SERIES

WEDNESDAY EVENING, NOVEMBER 15

KIRSTEN FLAGSTAD

SOPRANO, WITH ORCHESTRA OF 72
EDWIN MCARTHUR, CONDUCTOR

TUESDAY EVENING, NOVEMBER 28

ARGENTINITA

SPAIN'S ACE WOMAN DANCER
AND HER ENSEMBLE

THURSDAY EVENING, JANUARY 4

JAN KIEPURA

FAMED POLISH TENOR, STAR OF OPERA,
CONCERT AND FILMS

WEDNESDAY EVENING, JANUARY 24

ARTUR RUBINSTEIN

DYNAMIC TITAN OF THE PIANO

TUESDAY EVENING, FEBRUARY 6

FRITZ KREISLER

DEAN OF VIOLINISTS

THURSDAY EVENING, FEBRUARY 8

HELEN JEPSON

SOPRANO, GLAMOROUS QUEEN OF SONG

MONDAY EVENING, FEBRUARY 12

NELSON EDDY

BARITONE IDOL OF CONCERT STAGE AND SINGING SCREEN

SEASON TICKETS: \$12.50, \$9.50, \$7.00, TAX EXEMPT

SUNDAY CONCERT SERIES

DUE TO EARLY DATE OF MENUHIN CONCERT THE REMAINING
SUNDAY CONCERTS ARE RELISTED AS A SIX ATTRACTION SERIES

SUNDAY AFTERNOON, JANUARY 14

BARTLETT and
ROBERTSON

WORLD'S BEST-LOVED DUO-PIANISTS

SUNDAY AFTERNOON, JANUARY 21

AMERICA'S MASTER SINGER
LAWRENCE TIBBETT

SUNDAY AFTERNOON, JANUARY 28

LINA PAGLIUGHI

SENSATIONAL COLORATURA—
"THE SECOND TETRAZZINI"

SUNDAY AFTERNOON, FEBRUARY 18

MARIAN ANDERSON

THE GREATEST LIVING CONCERT SINGER

SUNDAY AFTERNOON, MARCH 10

JOOSS BALLET

SENSATIONAL INTERNATIONAL DANCERS
IN NEW PROGRAMS

SUNDAY AFTERNOON, MARCH 31

JOSE ITURBI

EMINENT SPANISH PIANIST—
"MUSIC AT ITS BEST"

SEASON TICKETS: \$11.00, \$8.00, \$6.00, TAX EXEMPT

EXTRA EVENTS

SUNDAY AFTERNOON, NOVEMBER 19

KIRSTEN FLAGSTAD

WITH ORCHESTRA IN NEW PROGRAM

SUNDAY AFTERNOON, NOVEMBER 26

ARGENTINITA

IN A GALA REPEAT PERFORMANCE

SINGLE TICKETS: \$2.75, \$2.20, \$1.65, \$1.10, TAX EXEMPT

SPECIAL ATTRACTION

FRIDAY EVENING, DECEMBER 8

DEVI DJA and her BALI and JAVA DANCERS

WITH NATIVE GAMELAN ORCHESTRA—COMPANY OF 40

TICKETS: \$2.75, \$2.20, \$1.65, \$1.10, TAX EXEMPT

ALL TICKETS AT SHERMAN, CLAY & CO.

SUTTER AND KEARNY STS.

EXBROOK 8585

Attune to the Finest....



Yes! Listen to the soul-stirring airs of the beautiful Operas! During intermissions listen, too! Your fellow music lovers will be making plans which center around




ACME

Dietetically **NON-FATTENING**

* As compared with other foods in diet, Acme Beer is relatively non-fattening.

WEDNESDAY NIGHT
OCTOBER 18, at 8:15



Madama Butterfly

Opera in three acts. Music by Giacomo Puccini. Text (in Italian) by Giacosa and Illica. Founded on the book of John L. Long and on the drama of David Belasco.

The Cast

Madama Butterfly (*Cho-Cho-San*) *JARMILA NOVOTNA
Pinkerton, *Lieutenant in the U. S. Navy* . . . *MICHAEL BARTLETT
Suzuki, *Cho-Cho-San's servant* *HERTHA GLATZ
Sharpless, *U. S. Consul at Nagasaki* JULIUS HUEHN
Goro, *a marriage broker* LUDOVICO OLIVIERO
The Bronze, *Cho-Cho-San's uncle* *CHARLES SHIFFELER
Prince Yamadori ARTHUR COLON HARVEY
Kate Pinkerton ELISABETH HACKETT
The Imperial Commissioner *STANLEY NOONAN
The Official Registrar EVARISTO ALIBERTINI
Trouble MARIAN HOPPING

* *San Francisco Opera Début*

Cho-Cho-San's Relatives and Friends, Servants

Stage Director

ARMANDO AGNINI

Conductor

GENNARO PAPI

Chorus Master

WILLIAM TYROLER

Time and Place About 1900; Nagasaki, Japan.

ACT I: Exterior of Pinkerton's House.

ACT II: Interior of Butterfly's Home.

ACT III: Same as Act II.

†Opera Guild Performance of "Madama Butterfly" Friday Matinee, Nov. 3

Bell rings three minutes before curtain rises · Encores not permitted

SEATS FOR POPULAR SERIES OPERAS ARE AVAILABLE AT SHERMAN, CLAY & CO. BOX OFFICE



VIRGINIA MORGAN
HARP RECITAL

COMMUNITY PLAYHOUSE
TUES. EVE., DECEMBER 5

Tickets: \$1.65, \$1.10, 55¢, Tax Included
SHERMAN, CLAY & Co.

*Member of San Francisco Symphony
and of Mills College Music Faculty*

872 CHESTNUT STREET TU XEDO 2738

Virginia Morgan

Chanson de Guillot Martin	<i>Clement Marot</i>
Largo	<i>Bach</i>
Concerto	<i>Handel</i>
Variations Pastorales sur un Vieux Noel	<i>Rousseau</i>
Marguerite doulereuse au Rouet	<i>Zabel</i>
Nordische Ballade	<i>Poenitz</i>

INTERMISSION

Gavotte (A la maniere de Lully)	<i>Pillois</i>
Nocturne	<i>Debussy</i>
Lolita the Dancer	<i>Tournier</i>
Danse des Lutins	<i>Renie</i>
Cuba	<i>Albeniz</i>
Children at Play	<i>Grandjany</i>
Le Jardin mouillé	<i>De la Presle</i>

COMMUNITY PLAYHOUSE · SAN FRANCISCO
TUESDAY EVENING, DECEMBER 5, 1939



Glamour of Mink...
interpreted by

ARNOLD LIEBES FURS

218 POST STREET

WHEN THE OPERA IS ENDED

The World's Greatest Artists

Hear them

RCA V

EIGHT OPERAS OF SAN FRANCISCO 1939
SEASON ARE ON VICTOR RECORDS



Enjoy your favorite operas in your home. No investment can pay you and your family greater dividends of year long happiness. All of these Victor recorded operas are available at your Victor record salon:

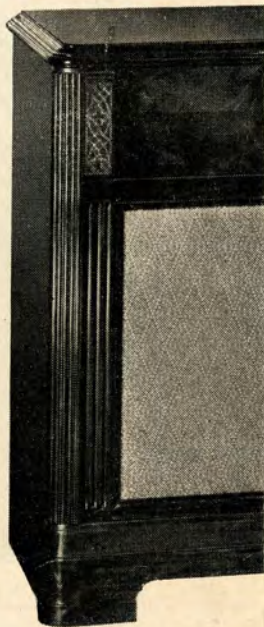
Madama Butterfly (Complete) . . . *Rigoletto* (Complete) . . . *Othello* (Complete) . . . *Tosca* (Complete) . . . *Cavalleria Rusticana* (Complete) . . . *Don Pasquale* (Complete) . . . *Il Trovatore* (Complete) . . . *Die Walkure* (Acts I and II).



MELCHIOR



FLAGSTAD



When you hear an opera trola from Victor Red Sea the opera in your home Model U-40 has automa inch and 12-inch records. fidelity the entire tonal American and foreign r tuning . . . designed for t

CITY OF PARIS

DOUGLAS 4500

PAUL VERDIER, Pres.

RADIO · RECORDS

SECOND FLOOR B

THE EMPORIUM

MARKET opposite POWELL

EXBROOK 6800

for Complete Displays

Radios, Victrolas and Records

FOURTH FLOOR

HALE BROS.

NEW RECORD SALON

FOURTH FLOOR

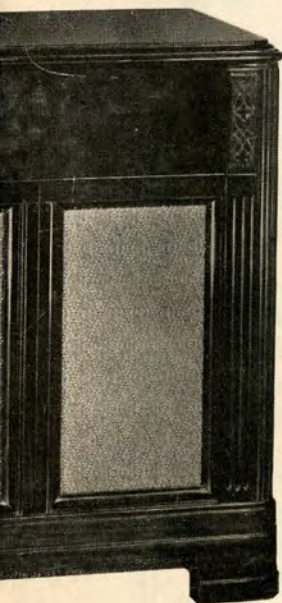
5th and Market

D...LET THE SINGERS REMAIN

are on Victor Red Seal Records

with a New

VICTROLA



VICTOR RECORDED ARIAS BY STARS OF THE 1939 SAN FRANCISCO OPERA SEASON

KIRSTEN FLAGSTAD sings: Leonora's Aria from *Fidelio*; Brunnhilde's Battle Cry from *Die Walkure*; Isolde's Liebestod from *Tristan und Isolde*.

LILY PONS sings: Caro Nome from *Rigoletto*; Una Voce Poco Fa from *Barber of Seville*.

LAURITZ MELCHIOR sings: Love Duet from *Tristan und Isolde*; Lohengrin's Farewell from *Lohengrin*.

LAWRENCE TIBBETT sings: Largo al Factotum from *Barber of Seville*; Te Deum from *Tosca*.

GIOVANNI MARTINELLI sings: Di Quella Pira from *Il Trovatore*; E Lucevan le Stelle from *Tosca*.

TITO SCHIPA sings: The Dream from *Manon*; La Donna e Mobile from *Rigoletto*.

ALESSANDRO ZILIANI sings: Che Gelida Manina from *Boheme*; Amor ti Vieta from *Fedora*.

recreated by an RCA Victor records you are attending This new RCA Victrola ic record changer for 10... reproduces with perfect range. The radio offers ception and push-button television attachment.



PONS



TIBBETT

SCHWABACHER-FREY

Radio and Record Salon
MEZZANINE FLOOR
MARKET opp. GRANT AVE.
DOUGLAS 4848

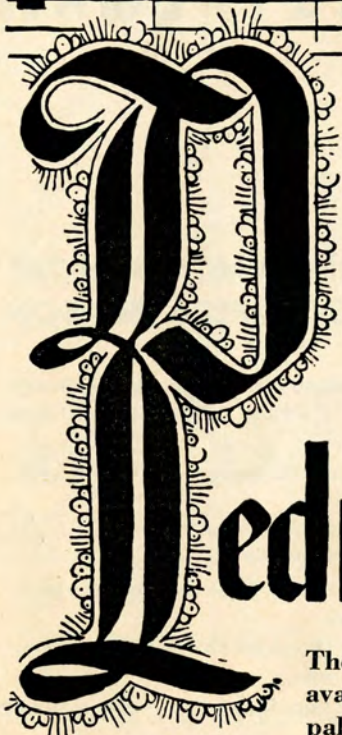
SHERMAN, CLAY

America's Great
Music House

TEN PACIFIC COAST STORES

WILSON'S RECORD LIBRARY

SECOND FLOOR
545 SUTTER STREET
SU TTER 2559



From the
bodegas of

Pedro Domecq

Bottled in Jerez, Spain



The Sherries of Pedro Domecq are now available in great variety to suit every palate and every purse. If your taste is for a sweet wine we have mahogany-hued *Olorosos* rich in the benefactions of antiquity. For those who prefer the dryer types there are Domecq *Amon-tillados* and *Finos* of great distinction. To serve Sherry is good taste. To serve Domecq Sherry is discrimination.



IF you can learn to say Domecq when you ask for Sherry you will never be disappointed in the quality of your wine. Sold at package liquor stores and served by leading hotels and restaurants.

Served at the Opera House BUFFET

"LIBIAMO NE'
LIETI CALICI"

Traviata



Alfred. *con grazia leggerissimo*

Li - bia - mo, li - bia - mo ne' lie - ti ca - li - ci,

pp

che la - bel - lez - za - in - flo - ra; e la - - - - - fug - ge - vol, fug -

pp

ge - vol o - - - - - ra s'in - ne - brii - a - vo - lut - - - - - tà

• For more than half a century, delicious, mellow Italian Swiss Colony wines have enabled San Franciscans to heed this melodic invitation to a joyous toast, from the pen of the great Verdi.

ITALIAN SWISS COLONY

California Wines

ALL VARIETIES
BOTTLED OR IN BULK

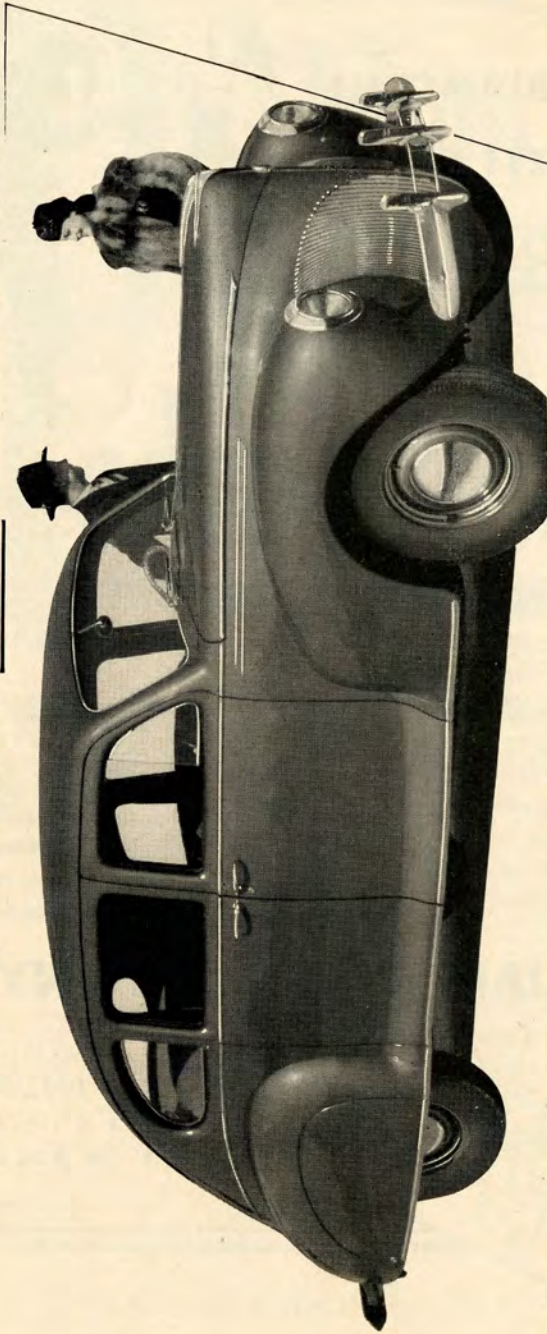
Since 1881

GENERAL OFFICES
SAN FRANCISCO



More Power... More Room...

MORE THAN EVER ALONE AT ITS PRICE!




ASK owners of past Lincoln-Zephyrs what things about the car are most outstanding, and they will name its style, its performance, its remarkable roominess and comfort. See Lincoln-Zephyr for 1940, and you find *each* of these increased! The matchless V-12 engine now develops 120 horsepower. Bodies are entirely new . . . with more

seat room, more luggage space, bigger windows and windshield. New steering column gearshift and still smoother clutch action make driving a Lincoln-Zephyr more enjoyable than ever. Don't choose your new car till you've seen this newest Lincoln-Zephyr. *It brings still more of those good things that have set it apart from the start!*

**Lincoln
Zephyr
V-12 FOR 1940**

FRIDAY NIGHT
OCTOBER 20, at 7:45



Tristan und Isolde

*Opera in three acts. Music and Text
(in German) by Richard Wagner*

The Cast

Tristan, a Cornish Knight,
nephew of King Mark LAURITZ MELCHIOR
Isolde, Princess of Ireland KIRSTEN FLAGSTAD
Brangäne, Isolde's friend and attendant KATHRYN MEISLE
King Mark of Cornwall *ALEXANDER KIPNIS
Kurvenal, Tristan's devoted servant JULIUS HUEHN
Melot, one of King Mark's courtiers GEORGE CEHANOVSKY
Shepherd LUDOVICO OLIVIERO
Steersman LOUIS D'ANGELO
A Sailor's Voice LESLIE GEORGE

** San Francisco Opera Début*

Sailor Lad, Sailors, Knights, Esquires, Men-at-Arms

Stage Director

HERBERT GRAF

Conductor

EDWIN MCARTHUR

Chorus Master

WILLIAM TYROLER

Time and Place *Legendary*

ACT I: On board a Vessel nearing the Cornish Coast.

ACT II: Garden before Isolde's Castle; Summer Night.

ACT III: Garden of Tristan's Estate in Brittany.

Bell rings three minutes before curtain rises · Encores not permitted

SEATS FOR POPULAR SERIES OPERAS AVAILABLE AT SHERMAN, CLAY BOX OFFICE, EXBROOK 8585

The Story of "Tristan und Isolde"

PROLOGUE: Sent to capture Cornwall to collect tribute, Morold, a chieftain affianced to the Irish princess, Isolde, is slain by Tristan, favorite nephew of King Mark of Cornwall. For his own wounds, Tristan, incognito, seeks the aid of Isolde, famed for her healing. Recognizing him by a notch in his sword as the slayer of her betrothed, Isolde plans to kill Tristan but falls in love with him and stays her hand. But Tristan sees in her only a queenly wife for King Mark. Presently Tristan returns to Ireland to bespeak Isolde for the bride of his uncle. Isolde accepts and they take ship for Cornwall. Tristan has now come to realize his own love for Isolde but bound by honor has carefully remained away from her during the voyage. As the ship nears Cornwall's shores, the drama begins.

ACT I: Infuriated at Tristan's apparent indifference and despondent at the thought of her approaching loveless marriage, Isolde tells Brangäne the story of her unrequited love for Tristan and, commanding her to prepare a poisonous draught, summons Tristan to her presence. Brangäne, sensing disaster, substitutes a love potion for the poison cup. When Tristan comes Isolde reproaches him for the death of Morold. He offers his sword for her revenge but she, feigning forgiveness, proposes they drink a pledge of peace. Together they drain the cup prepared by Brangäne and succumbing to its rapturous charm remain oblivious to their surroundings as the vessel reaches shore.

ACT II: Isolde, wedded to King Mark, has continued her relations with Tristan. They are suspected by Melot, a knight of the court, who arranges a pretended hunt in the hope of trapping the lovers. As the curtain rises Brangäne confesses to Isolde her substitution of the love philtre. Fearing the hunt a ruse, she warns Isolde not to signal for a meeting with Tristan. But Isolde, lost in the intoxication of the love potion, will not heed and waves a beckoning handkerchief. The unexpected return of the hunters interrupts a long and ardent love scene. King Mark bitterly reproaches Tristan and offers him banishment. But Melot, shouting treason, rushes forward, sword in hand. Tristan draws in turn but, seeking only death with honor, drops his guard and receives a mortal wound.

ACT III: Tristan lies delirious in his castle where he has been taken by Kurvenal who has sent for Isolde knowing that only she can cure his master's wounds. In a lucid moment Kurvenal tells Tristan of Isolde's expected coming. The pipe of a shepherd, posted to signal the approach of her ship, takes on a joyous note. Kurvenal, crying out that Isolde comes, rushes off. Tristan, overcome by joy, tears at his bandaged wounds and staggering to his feet as Isolde arrives, dies in her arms. King Mark, having learned of the love potion, has followed in forgiveness close behind Isolde. Kurvenal, barring entrance, slays Melot and is killed by the soldiers. King Mark invokes a blessing on the dead as Isolde sings to her dead love the immortal Liebestod.



"It's the flavour"



86 PROOF

Teacher's keeps its balance. That's why men like Teacher's taste. It's hearty, but not heavy. It's smooth, and not too sweet. Those are the usual reasons men give in expressing their preference for Teacher's Scotch.

Made since 1830 by Wm. Teacher & Sons, Ltd., Glasgow
SOLE U. S. AGENTS: Schieffelin & Co.,
NEW YORK CITY • IMPORTERS SINCE 1794

California Distributors:

PARROTT & CO., 320 California Street, San Francisco



*The Sign of a
Good Printing Establishment*

America's Great Music House

Sherman  Clay

SUTTER
at KEARNY
TEN PACIFIC
COAST STORES



A New Steinway Makes Its World Premiere

New low price
... only

\$525

Convenient
terms

With great pride Sherman, Clay presents this new Steinway to San Francisco. It is one of the most beautiful instruments ever to come from the hands of Steinway craftsmen. It gives you traditional Steinway quality, Steinway responsiveness of action, Steinway tone . . . in a small instrument new in size, new in design and new in price. Small enough for the most compact room or apartment, it is available in authoritative Sheraton, Colonial and modern designs. It has never been possible to buy a Steinway for so little . . . the finest piano you can buy at the price.

Visit Sherman, Clay tomorrow and see this remarkable new Steinway.

STEINWAY IS EXCLUSIVE WITH SHERMAN, CLAY

NBC Artist Service

OF THE NATIONAL BROADCASTING COMPANY, INC.
A RADIO CORPORATION OF AMERICA SERVICE
GEORGE ENGLS, *Managing Director*

Opera Season 1939

FLAGSTAD MARJORIE LAWRENCE ELISABETH RETHBERG DUSOLINA GIANNINI
MELCHIOR HERTHA GLATZ JARMILA NOVOTNA MARTINELLI FRED DESTAL
Conductors: ERICH LEINSDORF
EDWIN McARTHUR

Concert Season 1939

<i>Sopranos</i>	PACIFIC COAST	ALEX. BRAILOWSKY
FLAGSTAD	DOUGLAS BEATTIE	JOSEF AND ROSINA
ANNE JAMISON	DONALD DICKSON	LHEVINNE
MARJORIE LAWRENCE	<i>Cellist</i>	ARTUR RUBINSTEIN
LINA PAGLIUCCI	RAYA GARBOUSOVA	<i>Flautist</i>
<i>Contraltos</i>	<i>Violinists</i>	JOHN AMADIO
MARIAN ANDERSON	KREISLER	<i>Special Attractions</i>
HERTHA GLATZ	ROLAND GUNDRY	ARGENTINITA AND HER
<i>Tenors</i>	ERICA MORINI	SPANISH DANCERS
MARTINELLI	OSSY RENARDY	BALLET RUSSE DE
MELCHIOR	ISAAC STERN	MONTE CARLO
JAN KIEPURA	ZIMBALIST	COMEDIAN HARMONISTS
<i>Baritones</i>	<i>Pianists</i>	DICKSON AND
JOHN CHARLES THOMAS	RACHMANINOFF	GARBOUSOVA, in
		Joint Recital

Local Concert Management: Concert Division, San Francisco Opera Association
Booking Representative for California, Utah, Nevada, Arizona and Northwest Texas:
L. E. BEHYMER, Auditorium Bldg., Los Angeles
Northwest Representative: CLEONE POTTENGER, 111 Sutter Street, San Francisco



To the
Music Lovers of California

I extend my sincere wishes that this opera season will be most successful with greater praise for the musicians and their director, higher laurels for the artists, from an ever appreciating audience.

Angelo J. Rossi
President,

Angelo J. Rossi Co. INC.

45 GRANT AVE. FLOWERS DOUGLAS 8060

ARTISTS OF *San Francisco* OPERA COMPANY



RICHARD BONELLI



BIDU SAYAO



CHARLOTTE BOERNER



NINO MARTINI



DUSOLINA GIANNINI



NORMAN CORDON



FREDERICK JAGEL



MARJORIE LAWRENCE



MICHAEL BARTLETT



OLIVE PONITZ



DOROTHY CORNISH



GEORGE STINSON



STEPHAN BALLARINI



THELMA VOTIPKA



ANDRE FERRIER



CHARLES SHIFFELER

MOËT & CHANDON

Champagne

The Moët and Chandon families have been associated with the history of Champagne and particularly with the development of Champagne wine for more than two centuries.



Moët & Chandon's Imperial Crown and White Seal are today examples of the highest art in Champagne manufacture.

Pacific Coast Distributors

GERALD F. HERRMANN CO.
300 Front Street, San Francisco



MEMBER, BOARD OF DIRECTORS,
SAN FRANCISCO OPERA
ASSOCIATION

THE SPLENDID RECORD OF

ARTHUR M. BROWN

AS A MEMBER OF THE

BOARD OF SUPERVISORS

and also in his public life and in civic affairs, merits his reelection by the voters of San Francisco on

TUESDAY, NOVEMBER 7th

ARTISTS OF *San Francisco* OPERA COMPANY



MARION SHARPE



EDWARD WELLMAN



STANLEY NOONAN



ALICE AVAKIAN



PAUL WALTI



ELIZABETH HACKETT



MONA PAULEE



ARTHUR COLIN HARVEY



KATHLEEN LAWLOR



LESLIE GEORGE



JUAN NAVARRO



SUE BELLE BROWNE



EVARISTO ALIBERTINI



LAURRAN CHINN



MARGARET RITTER



ROY GARDEN

From

DEL MONTE
to THE RITZ



KORBEL SEC
California
CHAMPAGNE

PRODUCED BY

F. KORBEL & BROS.

SONOMA COUNTY

CALIFORNIA

SAN FRANCISCO OPERA GUILD, INC.

MRS. HENRY POTTER RUSSELL, *Chairman*

MRS. EDWARD OTIS BARTLETT, *Vice-Chairman*

MRS. TURNER MCBAIN, *Chairman Membership Committee*

MILTON ESBERG, JR., *Secretary*

JERD SULLIVAN, *Treasurer*

GUARANTOR MEMBERS

Mrs. G. S. Achilles
Mrs. Lloyd S. Ackerman
C. R. Adams
Mrs. Edson Adams
Mr. and Mrs. Wallace M. Alexander
Lucy H. and Edith W. Allyne
Margaret Andrews
Ettore Avenali

Mrs. William Babcock
Frazer Bailey
Mr. and Mrs. George
Washington Baker
A. R. Baldwin
Dr. Hans Barkan
Dr. Otto Barkan
Evelyn H. Barron
Mary A. Baumgartner
R. S. Beall
Mr. and Mrs. F. N. Belgrano, Jr.
Albert M. Bender
David Benioff
Mrs. Walter Bentley
Mrs. A. Berenson
Dr. Tholow Binkley
Mr. and Mrs. Newton Bissinger
Louis Bloch
Edward J. Bloom
Mr. and Mrs. Charles R. Blyth
Dr. and Mrs. Walter W. Boardman
Mrs. Angus Gordon Boggs
Mrs. R. C. Bolton
Effie Boyyer
Mrs. P. E. Bowles

Louise A. Boyd
Dr. S. F. Boyle
Mrs. Frederick W. Bradley
H. Sewall Bradley
Caroline and Katherine Breuner
Elizabeth B. Brice
Mrs. William Ellery Briggs
Mrs. Philip Neville Brooke
George W. Brooks
Annie Florence Brown
Arthur M. Brown, Jr.
Carl G. Brown
Hobson Brown
Mrs. Louis C. Brown
Ralph Brown
Starr Bruce
Frank E. Buck
Mrs. Frank H. Buck
Dr. and Mrs. Leonard W. Buck
Thomas Buck
Alice Butler

Mr. and Mrs. John R. Cahill
Dr. William Otis Calloway
Mr. and Mrs. George T. Cameron
Estelle Carpenter
Mrs. G. W. Caswell
Selah Chamberlain, Jr.
Drew Chidester
Charles A. Christen
Herbert W. Clark
Mrs. Tobin Clark
Mrs. Warren D. Clark
Herbert E. Clayburgh

Horace B. Clifton
Newton Booth Coghill
Mrs. John P. Coghlan
Mr. and Mrs. George D. Cohn
Mrs. Max M. Cohn
Mr. and Mrs. Colbert Coldwell
Persis H. Coleman
S. Waldo Coleman
H. D. Collier
Mrs. Zac. Coney
Mrs. W. B. Cope
Dr. Frederick C. Cordes
Mr. and Mrs. Chester R. F. Cramer
Dr. Charles Crocker
William W. Crocker
George E. Crothers
R. K. Davies
Mrs. Charles J. Deering
Mrs. Frank P. Deering
In memoriam
Frank Prentiss Deering
Mr. and Mrs. Georges F. de Latour
Countess Andre de Limur
Frank H. Denman
Mrs. Irene B. Dernham
Mrs. Robert T. Devlin
Mr. and Mrs. Marshall Dill
Mrs. Samuel L. Dinkelspiel
Katharine Donohoe
Mrs. Frank R. Dray
H. B. Drescher
Mr. and Mrs. J. A. Ducournau
Frank H. Dunne
F. A. Dorn

Maestro
NINO
COMEL*
Studios

*of Milan, Italy. Formerly Asst. Conductor, San Francisco Opera Association. Teacher of Josephine Tumminia and other leading singers.

376 SUTTER ST. DOUGLAS 6379

VOICE-COACHING-ENSEMBLE OPERA CLASSES

FRANCES HATHAWAY EXBROOK 4958
ASSISTANT

Soprano. Formerly of the S. F. Opera Association.

ROBERT GRAHAM PARIS ORDWAY 7579
TEACHER - ACTOR

Underlying sciences of acting, diction acting, microphone technique.

EDITH CAUBU DOUGLAS 0269
PUPIL OF EUROPEAN ARTISTS

Piano and Harmony.

GINA LANA SKYLINE 9660

Italian and French Languages.

SAN FRANCISCO'S CIVIC CENTER

A tribute to our enterprising public officials and citizens!

"Make no little plans, they have no magic to stir men's blood and probably in themselves will not be realized; make big plans, aim high in hope and work, remembering that a noble logical diagram once recorded will never die."

—DANIEL H. BURNHAM.

SAN FRANCISCO'S thirty-four million dollar Civic Center, a dream two decades ago, an accomplished fact today.

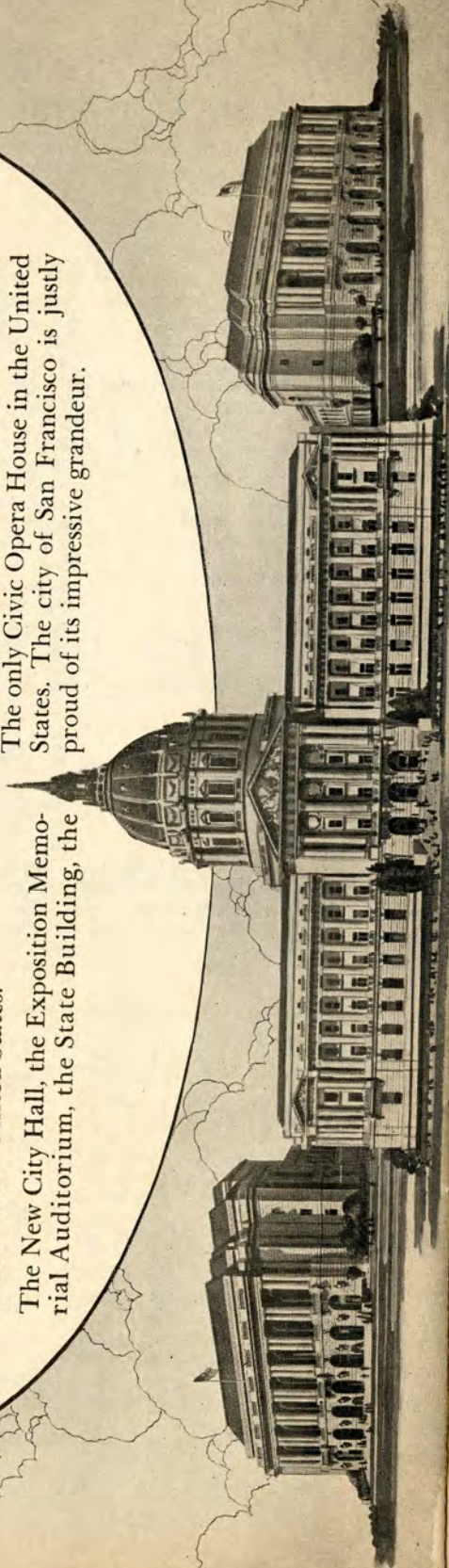
Today, thanks to our far-sighted and progressive public officials and citizens, San Francisco has the most beautiful Civic Center in the United States.

The New City Hall, the Exposition Memorial Auditorium, the State Building, the

Public Library, the Federal Building, the Opera House and Veterans' Building are an eloquent expression of the artistic, cultural and social life of San Francisco.

San Francisco is the first city in the United States to support a symphony orchestra.

The only Civic Opera House in the United States. The city of San Francisco is justly proud of its impressive grandeur.



GUARANTOR MEMBERS *continued*

Mrs. Dunn Dutton

A. W. Eames

Mrs. George Elliott Ebright

Mrs. J. W. Edwards

Albert L. Ehrman

Mrs. Alfred Ehrman

Sidney M. Ehrman

Mrs. S. W. Ehrman

*Milton H. Esberg

Mr. and Mrs. Paul I. Fagan

Lionel B. Feigenbaum

Mrs. Louis Feigenbaum

Mrs. Charles N. Felton

Excelentissima Maria Antonia Field

Mr. and Mrs. Mortimer Fleishhacker

Mr. Mortimer Fleishhacker, Jr.

John L. Flynn

Mrs. J. A. Folger

John F. Forbes

R. C. Force

Edward T. Ford

J. E. French

W. H. French

William Fries

Maurice A. Gale

Mrs. Alice Gartenlaub

Mark L. Gerstle

D. Lyle Ghirardelli

Mrs. Domingo Ghirardelli

Mrs. L. Ghirardelli

George B. Gillson

Mrs. John Glasson

A. J. Gock

Celene and Lutie D. Goldstein

Louis S. Goldstein

Mrs. Ludovica D. Graham

Mr. and Mrs. Joseph T. Grant

Gerald H. Gray

Mrs. Andrew G. Griffin

Mr. and Mrs. Berthold Guggenhome

Mrs. Leon Guggenhome

Gustav Gumpel

Louis S. Haas

Mr. and Mrs. William Haas

Mrs. Walter A. Haas

Mrs. J. F. C. Hagens

Marshall Hale

Mrs. Prentiss Cobb Hale

Reuben B. Hale

Frederic W. Hall

Herbert E. Hall

Mrs. Jura Lawrence Hall

W. F. Hanrahan

Mrs. Robert D. Harden

Mrs. L. W. Harris

Maurice E. Harrison

Mrs. Russell P. Hastings

Mr. and Mrs. Elystus Hayes

Arthur W. Hazen

Timothy Healy

Edith Hecht

Mrs. E. S. Heller

Walter D. Heller

Walter S. Heller

Mrs. I. W. Hellman

Mrs. Robert B. Henderson

Mrs. Harry Hill

Leslie W. Hills

Mr. and Mrs. Reuben W. Hills, Jr.

Mr. and Mrs. Harry H. Hilp

Carl Hoffman

Oscar Hoffman

Osgood Hooker

Mrs. Herbert Hoover

Mrs. H. A. Hornlein

George H. Hotaling

Marian Huntington

Mrs. Joseph Hyman

Mrs. James Irvine

S. Nicholas Jacobs

Mrs. Frank L. Jeddiss

Mrs. Ira Kahn

Mr. and Mrs. Samuel Kahn

Henry Kaiser

Mr. and Mrs. George R. Keast

Mrs. Charles J. Keenan

Mr. and Mrs. Charles Kendrick

Mr. and Mrs. Arthur Dale King

Dale King

Percy L. King

R. W. Kinney



THE PERFECT CHOICE

FOR DINNER BEFORE

THE OPERA * COCKTAILS

AFTER THE OPERA

THE
REDWOOD ROOM

THE CLIFT

eyclax
of London

*beg to announce that their
famous beauty prepara-
tions will be sold exclu-
sively in San Francisco*

by

NELLY GAFFNEY

INC.

354 POST STREET

SAN FRANCISCO



San Francisco's Smartest
New Informal Rendezvous!

the **BEACHCOMBER**

A gay club with the the easy-informality of Bali. Ask for the twenty-ounce "Beachcomber Special". See the lovely girls dive for real ocean pearls!

Music • Dancing
Entertainment

• FRANCISCO & GRANT ON TELEGRAPH HILL •

BELFAST

★
*Manufactured
by the makers
of*
BELFAST
Dry
GINGER ALE

*Famous
Since 1877*



Sparkling Water

PURE, wholesome and delightful to the taste, Belfast Sparkling Water is the ideal table beverage . . . it is *supreme* among the better mixers—heightens the flavor of other beverages and gives longer-lasting sparkle in the glass.

NEW CENTURY BEVERAGE CO.

820 Pacific Avenue

DOuglas 0547

San Francisco

GUARANTOR MEMBERS *continued*

Mrs. Josephine R. Kleinjung
 Mrs. William E. Kleinsorge
 Mrs. Lora J. Knight
 Mr. and Mrs. Samuel Knight
 Otto Koenig
 Mrs. Eva Heller Kohn
 Caroline Korbel
 Martha Korbel
 Mrs. Marcus S. Koshland
 Frederick J. Koster
 Mr. and Mrs. Edwin V. Krick
 Albert G. Lang
 Mrs. James P. Langhorne
 Mr. and Mrs. John Larson
 Mrs. Charles G. Lathrop
 Leland S. Lathrop
 Dr. Mary Layman
 William Leib
 J. B. Levison
 Mr. and Mrs. Jesse N.
 Lilienthal, Jr.
 Mr. and Mrs. Philip N.
 Lilienthal
 Mr. and Mrs. Samuel Lilienthal
 Clarence R. Lindner
 F. L. Lipman
 Dr. and Mrs. Hans Lisser
 Mr. and Mrs. David Livingston
 James K. Lochead
 Mrs. William M. Loftus
 M. E. Lombardi

S. Lowengart
 Mrs. Alan J. Lowrey
 Dr. Albert F. Lucchetti
 Rearden T. Lyons
 James A. McAllister
 A. M. McCarty
 Mrs. William H. McCormick
 Mr. and Mrs. Angus D. McDonald
 Mrs. Mark L. McDonald
 F. S. McGinnis
 John A. McGregor
 John D. McKee
 Mrs. Alfred McLaughlin
 Mr. and Mrs. Frederick W.
 McNear
 Mrs. George P. McNear
 John N. McVay
 Mr. and Mrs. Errol MacBoyle
 Graeme K. MacDonald
 Mr. and Mrs. Grover A. Magnin
 Mrs. J. W. Mailliard, Jr.
 A. C. Mattei
 Evelyn Mendessolle
 Gaetano Merola
 Charles W. Merrell
 Mrs. H. C. Merritt, Jr.
 Mrs. George H. C. Meyer
 Viola L. Meyer
 C. F. Michaels
 Mr. and Mrs. C. O. G. Miller
 Mrs. Harry East Miller

Mr. and Mrs. Robert Watt Miller
 Mrs. Maxwell C. Milton
 Henrietta Moffat
 Herbert C. Moffitt
 J. K. Moffitt
 Kenneth Monteagle
 Louis F. Monteagle
 Paige Monteagle
 Mrs. Joseph A. Moore
 Mrs. H. W. Morgan
 *Mrs. A. F. Morrison
 Mrs. Juliet E. O. Munsell
 Mrs. C. E. Musto
 Guido J. Musto
 Laura Musto
 Ralph R. Nelson
 Newton H. Neustadter
 Hugo D. Newhouse
 Mrs. Alfred Newman
 Mr. and Mrs. John Francis Neylan
 Mrs. Stanhope Nixon
 Mr. and Mrs. Charles G. Norris
 Mary L. Obujen
 Clarence M. Oddie
 Benjamin J. Older
 Edwin L. Oliver
 W. H. Orrick
 Charles R. Page
 Mrs. S. H. Palmer
 Armando Pedrini

DUCHESS SANDWICHES

PROSPECT 2131



1438 CALIFORNIA ST.

ALL TYPES OF PARTY SANDWICHES FOR THE
 FASTIDIOUS HOSTESS

John Walker & Co.

WINES AND SPIRITS

Established 1933

All Standard Brands at Competitive Prices

FREE DELIVERY SERVICE: San Francisco, the Peninsula and Transbay Districts

CHARGE ACCOUNTS INVITED • CATALOG MAILED ON REQUEST

111 MONTGOMERY STREET

GARFIELD 1132-33

Kajetan Attl



KAJETAN ATTL'S HARP ENSEMBLE

First Harpist with San Francisco Symphony for twenty-six consecutive years. (Beginners or advance students phone for appointment. (When buying or renting a harp only an experienced harpist can advise correctly.

1030 BUSH STREET
STUDIO No. 6

PHONE OR DWAY 6367 SAN FRANCISCO

Large Stock of Harps for Sale or Rent



GUARANTOR MEMBERS *continued*

- | | | |
|------------------------------|------------------------------------|----------------------------------|
| Mrs. Grattan D. Phillips | Else Schilling | Mr. and Mrs. R. M. Tobin |
| Mr. and Mrs. G. Pisani | Dr. Walter Schilling | Morley Thompson |
| A. Poladian | Mrs. E. G. Schmiedell | Mr. and Mrs. Ernest J. Torregano |
| Mr. George Pope | Hannah M. Schwabacher | George E. Townsend |
| Mrs. Ashton Potter | James H. Schwabacher | Helen Towne |
| J. Sheldon Potter | A. E. Schwabacher | Mrs. A. S. Tubbs |
| Mr. and Mrs. Stanley Powell | Mrs. Louis A. Schwabacher | Mr. and Mrs. Nion R. Tucker |
| N. R. Powley | R. S. Shainwald | Mrs. Edward Van Bergen |
| Mrs. Warren S. Quinn | Mr. and Mrs. R. H. Shainwald | Mrs. Daniel Volkmann |
| Mrs. J. C. Raas | Mrs. Frank M. Sheldon | Johanna M. Volkmann |
| *Carl Raiss | F. R. Sherman | Mrs. William G. Volkmann |
| Jane D. Rawlings | J. F. Shuman | G. A. Voute |
| R. F. I. Raymond | Mrs. A. H. Siegfried | George Wagner |
| A. S. Rees | May Sinsheimer | Mr. and Mrs. Hubert M. Walker |
| Mrs. J. W. Reid | Mrs. Edgar Sinton | Randolph C. Walker |
| Mrs. Mark L. Requa | Charles W. Slack | Mrs. Bradley L. Wallace |
| Mrs. B. S. Revett | Mrs. Leon Sloss | Mrs. Clarence R. Waller |
| Dr. Ralph A. Reynolds | Mrs. Leon Sloss, Jr. | Whitney Warren, Jr. |
| George H. Roos | Mrs. M. C. Sloss | Mrs. W. O. Wayman |
| Madame A. Roos | Stanley C. Smallwood | R. W. Weber |
| Robert A. Roos | Charles Watt Smith | C. A. Webster |
| Mrs. Charles H. Rosenbaum | Dr. Wallace B. Smith | Michel Weill |
| Arthur S. Rosenblatt | Mrs. Edward B. Stanwood | R. M. Welch |
| Leland S. Rosener | Mrs. Sigmund Stern | Mrs. Guy C. Whitaker |
| Mrs. Angela Wing Roth | William W. Stout | *L. C. Whitaker |
| Mr. and Mrs. William P. Roth | Dr. and Mrs. John Philip Strickler | L. C. Whitaker |
| Mrs. Henry Potter Russell | Walter H. Sullivan | Robert L. Wiel |
| Mrs. J. Salkey | Mr. and Mrs. Alfred Sutro | Martha Wilcox |
| Mrs. M. J. Savage | George C. Thierbach | Stephen Williams |
| Betty Saxe | J. H. Threlkeld | Mrs. Clinton E. Worden |
| A. E. Sbarboro | William Timson | Mr. and Mrs. Allen Wright |
| Horace H. Scales | Mr. and Mrs. Cyril Tobin | Mr. and Mrs. Harold L. Wright |
| Carl Schaubye | | Mr. and Mrs. F. A. Zane |
| | | Mrs. V. Zaruba |
| | | J. D. Zellerbach |

**In Memoriam.*

Guarantor Member Organizations

- | | | |
|-----------------------------|---------------------------|-------------------------|
| Baldwin Piano Company | Lovina Hund, Inc. | Podesta and Baldocchi |
| Blum's | H. Liebes and Co. | Palace Hotel |
| Borden's Dairy Delivery Co. | Livingston Bros., Inc. | Ransohoff's |
| Bullock and Jones Company | Hotel Mark Hopkins | Roos Bros. |
| Carrick and Peterson | Munson School | Sir Francis Drake Hotel |
| City Transfer Company | Musicians' Union | Hotel St. Francis |
| Columbia Broadcasting Co. | National Broadcasting Co. | St. Francis Beauty Shop |
| Davis-Schonwasser Co. | Nelly Gaffney | Shreve and Co. |
| The Emporium | The Oakland Forum | Sommer and Kaufmann |
| Fairmont Hotel | O'Connor, Moffatt and Co. | May P. Walsh |
| S. and G. Gump Co. | Pisani Printing Co. | Yellow Cab Company |

San Francisco Conservatory of Music, Inc.

23RD YEAR

3435 SACRAMENTO STREET

WALNUT 3496-3497

OFFERS A THOROUGH MUSICAL EDUCATION

Day and Evening Instruction in:

PIANO	VOICE	SIGHT SINGING	EAR TRAINING	ORCHESTRA
VIOLIN	ORGAN	HARMONY	MUSICIANSHIP	CHORUS
CELLO	CLARINET	FORM	COUNTERPOINT	ENSEMBLE

NORMAL COURSES WITH DIPLOMA · SPECIAL CHILDREN'S CLASSES

BRANCHES IN OTHER CITIES

MUSIC ALBUM



14 TILLMAN PLACE

[OFF GRANT AVENUE]

EXBROOK 5738

RENA LAZELLE

VOCAL TEACHER

and COACH of the

San Francisco Conservatory of Music

All branches of the Vocal Art

including an Opera Class

Recent performances: *Romeo and Juliet*,

October 5 and 9.

In preparation: *Don Pasquale, Samson and Delilah*.

Twenty pupils singing professionally
in California

PHONE WALNUT 3307

BERTRAM C. BEST

DENTIST

780 FLOOD BUILDING

SAN FRANCISCO

TELEPHONE SUTTER 0736

CATHERINE B. SWINT

TEACHER OF PIANO

SPECIALIZING IN CHILD

INSTRUCTION

3368 JACKSON STREET

SAN FRANCISCO

HANCOCK BROS.

ROLL AND RESERVED SEAT TICKETS

25 JESSIE STREET

DOUGLAS 2191

SAN FRANCISCO, CALIFORNIA

MME. JOHANNA KRISTOFFY

PRIMA DONNA SOPRANO

Thorough Vocal and Dramatic Training

740 PINE STREET

EXBROOK 4366

JOSEPH GREVEN

VOICE SPECIALIST

Teacher of Many Prominent European
and American Singers

927 LAKE STREET

BAVVIEW 5278

STELLA SPRAGUE BEST

VOICE

PHONES: SUTTER 0736, GARFIELD 5936

STUDIO 49, 376 SUTTER STREET

CITY TRANSFER CO.

SERVES SAN FRANCISCO OPERA CO.
WHY NOT YOU?

MOVING • STORAGE • SHIPPING

162 TURK STREET

PROSPECT 3060

ELIZABETH WILLS

SINGERS PREPARED FOR

CONCERT • RADIO • OPERA

Teacher of Florence Quartararo, soprano, who
was heard recently in Concert and Radio

701 PINE STREET

SUTTER 1584

BUFFET SERVICE

CHAMPAGNES MAY BE ORDERED AHEAD
FOR CHILLING, READY FOR INSTANT
SERVICE DURING INTERMISSION.

TABLES MAY BE RESERVED FOR EVENING
OR SEASON BY ARRANGEMENT WITH
HEAD WAITER.

BELL RINGS THREE MINUTES BEFORE
CURTAIN.

USE ELEVATOR DURING INTERMISSIONS.

R. C. O'BRIEN, CONCESSIONS

GUARD
HOME
AND
GARDEN



SAFE
CLEAN
SURE

SCHRADER'S ANT
POWDER
AND SYRUP

AT ALL
DRUG — GROCERY — HARDWARE — SEED STORES

SEASON BOX SUBSCRIBERS

MR. AND MRS. CHARLES R. BLYTH
MRS. PHILIP E. BOWLES
MRS. FREDERICK W. BRADLEY
MR. AND MRS. GEORGE T. CAMERON
MR. AND MRS. WILLIAM W. CROCKER
MRS. FRANK P. DEERING
MR. AND MRS. SIDNEY M. EHRMAN
MR. AND MRS. PAUL I. FAGAN
MR. AND MRS. MORTIMER FLEISHHACKER
MRS. PRENTISS COBB HALE
MRS. I. W. HELLMAN
MR. AND MRS. ARTHUR DALE KING
MRS. MARCUS S. KOSHLAND
MR. AND MRS. ERROL MACBOYLE
MR. AND MRS. FELIX S. MCGINNIS

MRS. RICHARD S. MCCREERY
MR. JOHN A. MCGREGOR
MR. AND MRS. F. W. MCNEAR
MR. AND MRS. C. O. G. MILLER
MR. AND MRS. ROBERT WATT MILLER
MR. AND MRS. MAXWELL C. MILTON
MRS. STANHOPE NIXON
MR. AND MRS. CHARLES G. NORRIS
MR. AND MRS. GEORGE A. POPE
MR. AND MRS. WILLIAM P. ROTH
MR. AND MRS. HENRY POTTER RUSSELL
JUDGE AND MRS. M. C. SLOSS
MRS. SIGMUND STERN
MR. AND MRS. NION R. TUCKER

for the Opera

PRECIOUS GEMS

. . . exclusive New Jewelry Creations
. . . *Rare Antique Jewelry*
. . . a superb Collection

from **PHILIP KLEIN**

MANUFACTURERS of MODERN JEWELRY
IMPORTERS of ANTIQUE JEWELRY
519 GRANT AVENUE



Luncheon
Cocktails
Dinner

Tropical luxury comes to Maiden Lane's Blue Lagoon. Excellent cuisine, fine wines, long cool drinks that will give you delusions of grandeur. Prices are popular.

The Blue Lagoon

153 Maiden Lane • Douglas 3637

SHEET MUSIC

OPERA SCORES
LIBRETTOS
CHAMBER MUSIC

*The Best from the Catalogs
of All Publishers*

at

GROBE MUSIC CO.

INCORPORATED

310 Sutter St. • San Francisco

EX brook 0442

The San Francisco Opera Ballet

IMMEDIATELY following the close of the opera season with the termination of the Los Angeles engagement, the Ballet becomes an important touring concert company. Engagements this season will be played in Portland, Seattle, Vancouver, B. C., Salt Lake City, Denver, and other northwestern communities.

Following appearances in southern California, the Ballet will start east, playing at Phoenix and Tucson, El Paso, San Antonio, Houston, and Oklahoma City, among others, then St. Louis, Chicago, Milwaukee and middle western cities along the route. The touring period will run from November to the middle of March, with time out for Christmas Holidays in San Francisco.

Under the able direction of Willam Christensen, ten ballets have been prepared for the touring repertoire. The most pretentious of these is Delibe's "Coppelia," the three-act opus which is seldom produced in America.

Then there is a three-act contemporary ballet, "American Interlude," with music by the young San Francisco composer, Godfrey Turner, and eight shorter compositions of varying types and character.

During the past two years the Ballet has been maintained as a year-round unit with daily rehearsals and intensive preparation of repertoire material. Younger San Francisco artists who are not dancers have had the opportunity to broaden their scope through the ballet plans; principally, Charlotte Rider, who has designed the Ballet decor, and executed much of it, and Helen Green who has designed and executed costumes.

The Ballet School, which has also been under Mr. Christensen's direction, has, among other accomplishments, produced a Junior Ballet of splendid proportions. The influence of the School has gone far beyond San Francisco. During the past summer, when a summer session was inaugurated, students were registered from most of the western states, the western Canadian Provinces, as well as from eastern states.

The principal dancers of the Ballet remain unchanged. Janet Reed, prima ballerina, dances the role of "Swanilda" in "Coppelia" to Willam Christensen's "Frantz." Earl Riggins has the difficult role of "Coppelius." When "Coppelia" is performed in or near San Francisco, the Junior Ballet, charmingly costumed, are added to the third act divertissement, creating a striking spectacle.



COSTLY COMPLIMENT

MR. A: What are you doing up here at the City Hall, Jim? In trouble with the law?

MR. B: No, not so far. I've just been trying to learn something about the law.

MR. A: How so?

MR. B: Well, I guess this is my twentieth visit out here. Dick Roe appointed me his executor, you know. He tried to pay me a compliment . . .*



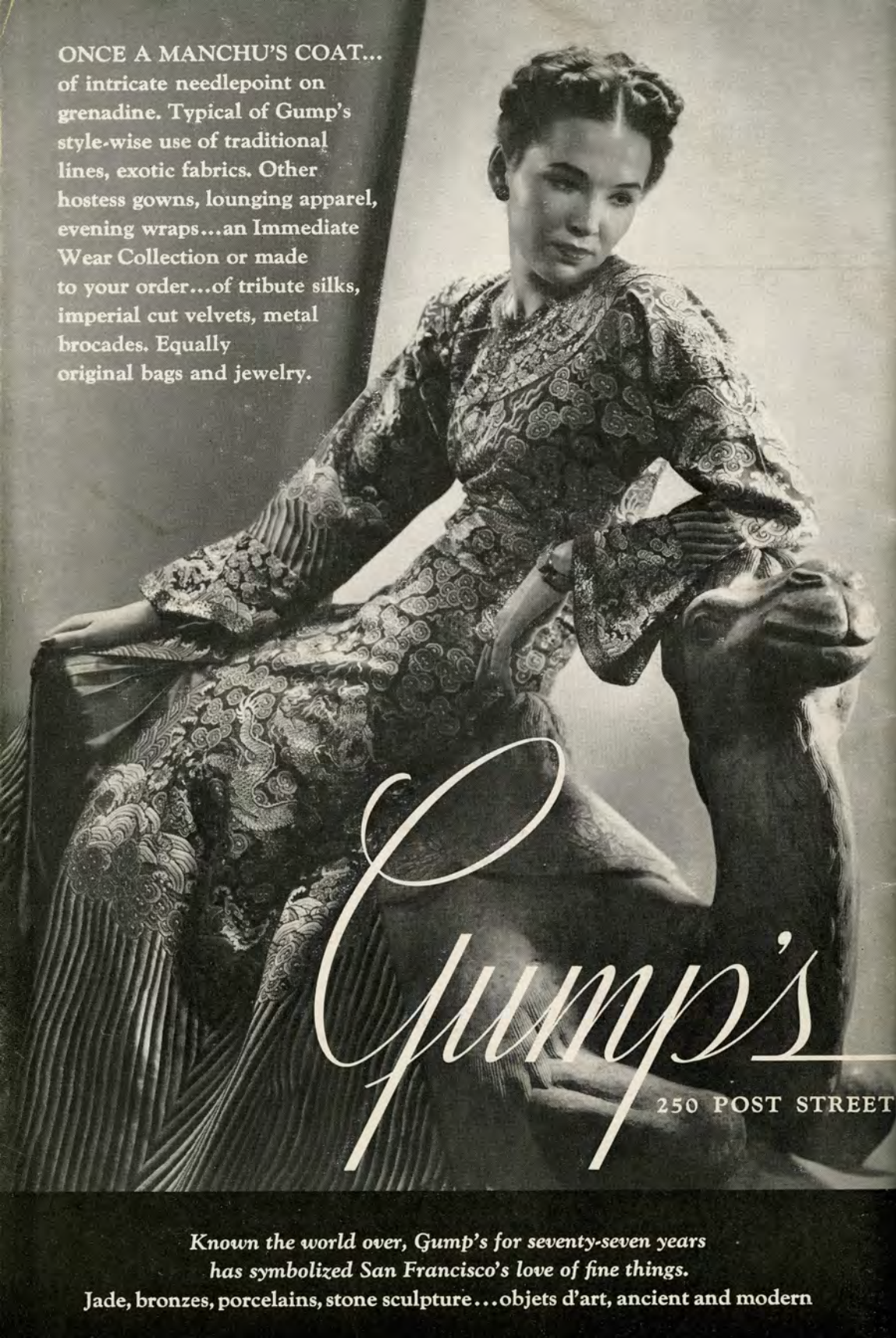
To name a friend executor of your Will may turn out to be an imposition. And perhaps costly to your heirs, through his illness, absence, or untimely death. Why not investigate the ability of your bank to act as executor? Ask for booklet.

Trust Department

SAN FRANCISCO
Market at Montgomery
Market at Grant Avenue

**Wells Fargo Bank
& Union Trust Co.**

ONCE A MANCHU'S COAT...
of intricate needlepoint on
grenadine. Typical of Gump's
style-wise use of traditional
lines, exotic fabrics. Other
hostess gowns, lounging apparel,
evening wraps...an Immediate
Wear Collection or made
to your order...of tribute silks,
imperial cut velvets, metal
brocades. Equally
original bags and jewelry.



Gump's
250 POST STREET

*Known the world over, Gump's for seventy-seven years
has symbolized San Francisco's love of fine things.
Jade, bronzes, porcelains, stone sculpture...objets d'art, ancient and modern*

THURSDAY NIGHT
NOVEMBER 2, at 7:45

Tristan und Isolde

*Opera in three acts. Music and Text
(in German) by Richard Wagner*

The Cast

Tristan, a Cornish Knight,
nephew of King Mark LAURITZ MELCHIOR
Isolde, Princess of Ireland KIRSTEN FLAGSTAD
Brangäne, Isolde's friend and attendant HERTHA GLATZ
King Mark of Cornwall ALEXANDER KIPNIS
Kurvenal, Tristan's devoted servant JULIUS HUEHN
Melot, one of King Mark's courtiers GEORGE CEHANOVSKY
Shepherd LUDOVICO OLIVIERO
Steersman LOUIS D'ANGELO
A Sailor's Voice LESLIE GEORGE
Sailor Lad, Sailors, Knights, Esquires, Men-at-Arms

Stage Director

HERBERT GRAF

Conductor

EDWIN MCARTHUR

Chorus Master

WILLIAM TYROLER

Time and Place Legendary

ACT I: On board a Vessel nearing the Cornish Coast.
ACT II: Garden before Isolde's Castle; Summer Night.
ACT III: Garden of Tristan's Estate in Brittany.

Bell rings three minutes before curtain rises • *Encores not permitted*

SEATS FOR "IL TROVATORE," SATURDAY NIGHT, ARE AVAILABLE AT SHERMAN, CLAY BOX OFFICE