

Andrea Chénier

1938

Friday, October 7, 1938 8:00 PM

Saturday, October 15, 1938 8:00 PM

SFO\_PUB\_01\_SFO\_1938\_01

Publications Collection

San Francisco Opera Archives

SAN FRANCISCO

**OPERA**

ASSOCIATION

GAETANO MEROLA . GENERAL DIRECTOR

SIXTEENTH ANNUAL SEASON

OCTOBER 7, NOVEMBER 3, 1938

WAR MEMORIAL OPERA HOUSE

# *Livingston Bros.*

GRANT AVENUE " GEARY STREET

This store is a member of San Francisco  
Retailers' Council, and endorses and supports  
the position and statements of this Council.

THE LADY OF THE

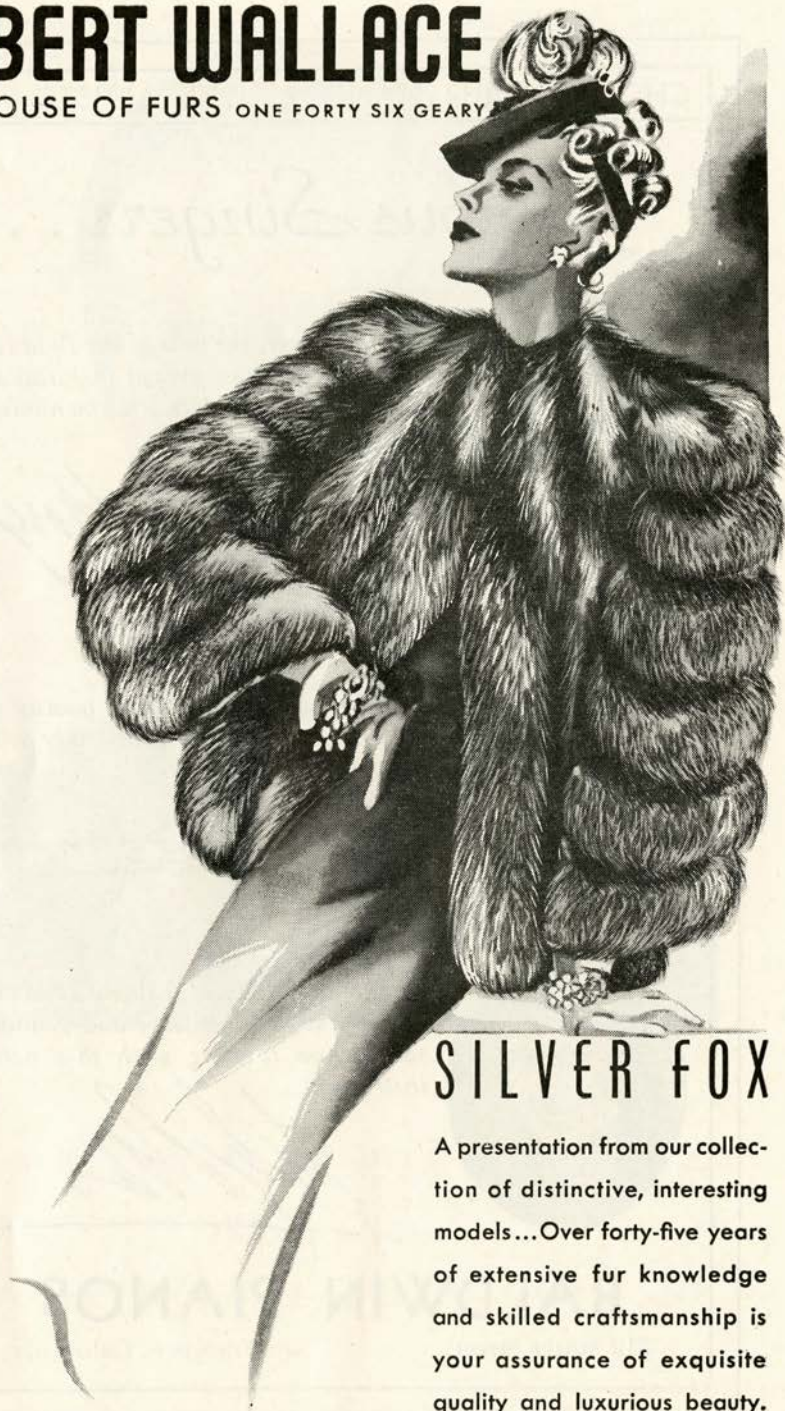


*is an old fashioned girl*

APPAREL SHOPS

# ROBERT WALLACE

THE HOUSE OF FURS ONE FORTY SIX GEARY



## SILVER FOX

A presentation from our collection of distinctive, interesting models...Over forty-five years of extensive fur knowledge and skilled craftsmanship is your assurance of exquisite quality and luxurious beauty.

YOU MAY USE THE CONVENIENT BUDGET PLAN

CHOOSE YOUR PIANO AS THE ARTISTS DO

## Famous Singers . .



*For the singer, the tone of the Baldwin represents a sure source of inspiration, and never fails to blend harmoniously with the voice.*

*Lucretia Hoxie*



*The Baldwin has that rare quality of tone which blends so successfully with the voice of the singer.*

*Edward Johnson*



*The tonal quality of the new Baldwin makes it a great pleasure and genuine satisfaction to sing with this noble instrument.*

*W. P. G.*

# BALDWIN PIANOS

310 Sutter Street

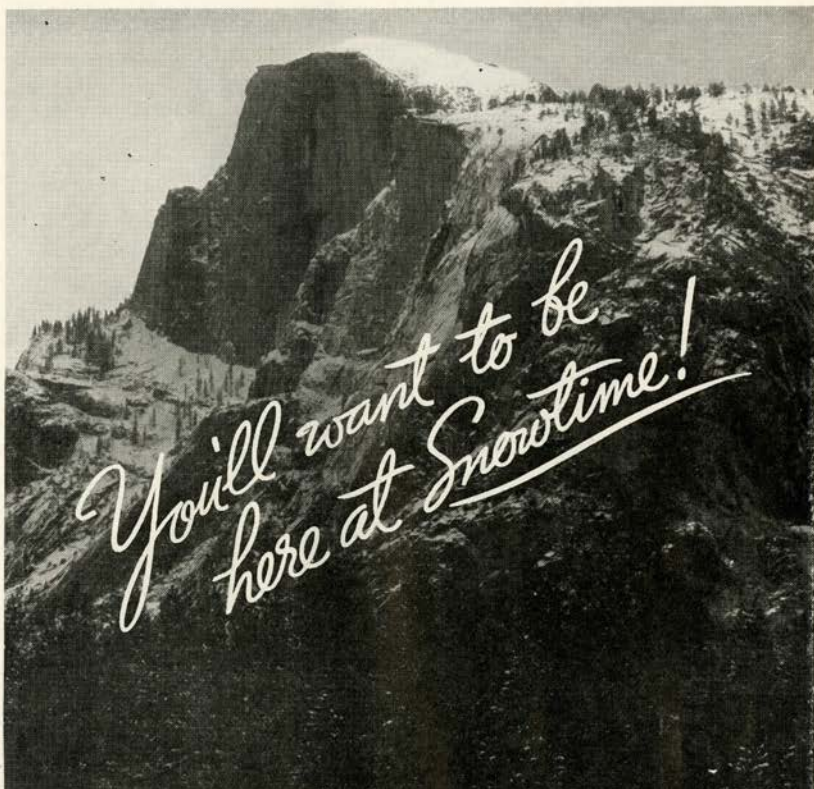
San Francisco, California



GAETANO MEROLA

*General Director*

SAN FRANCISCO OPERA COMPANY



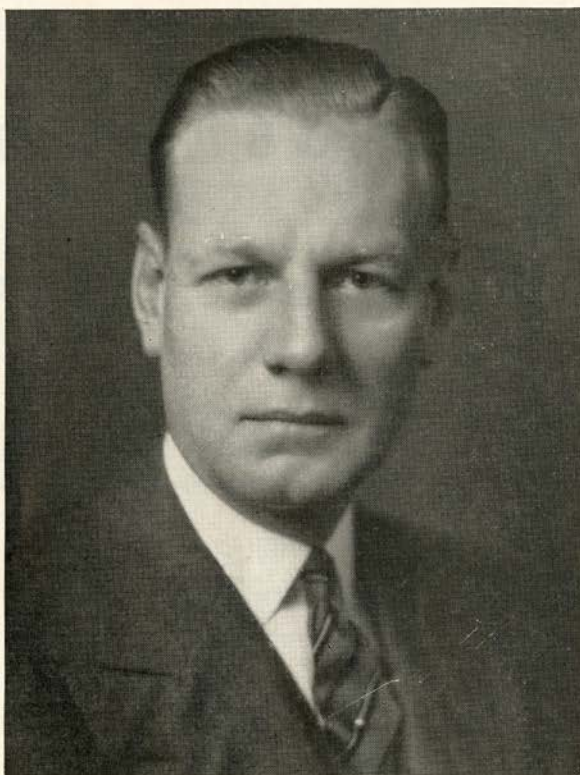
*You'll want to be  
here at Snowtime!*



Make the Yosemite ski slopes and the sparkling Valley ice rink your address for a week or two. Ahwahnee and Yosemite Lodge reservations at 39 Geary Street, San Francisco—EXbrook 3906.

**Y O S E M I T E**

*San Francisco*  
**OPERA ASSOCIATION**



**OFFICERS**

**ROBERT W. MILLER**  
*President*

**HORACE B. CLIFTON**  
*First Vice-President*

**ARTHUR MERRILL BROWN, JR.**  
*Second Vice-President*

**EDWARD F. MOFFATT**  
*Secretary-Treasurer*

**PETER CONLEY**  
*Business Manager*

**BOARD OF DIRECTORS**

**CHARLES R. BLYTH**

**WILLIAM W. CROCKER**

**ROBERT W. MILLER**

**ARTHUR MERRILL BROWN, JR.**

**MILTON H. ESBERG**

**JOHN FRANCIS NEYLAN**

**GEORGE T. CAMERON**

**MORTIMER FLEISHHACKER**

**RICHARD M. TOBIN**

**HORACE B. CLIFTON**

**TIMOTHY HEALY**

**NION R. TUCKER**





## BOARD OF GOVERNORS

WALLACE M. ALEXANDER	MRS. WILLIAM M. FITZHUGH	ROBERT W. MILLER
GEORGE WASHINGTON BAKER, JR.	MORTIMER FLEISHHACKER	EDWARD F. MOFFATT
ALBERT M. BENDER	A. P. GIANNINI	GUIDO MUSTO
WILLIAM H. BERG	JOSEPH D. GRANT	MRS. JOHN FRANCIS NEYLAN
P. A. BERGEROT	MARSHALL HALE	JOHN FRANCIS NEYLAN
CHARLES R. BLYTH	REUBEN B. HALE	ETTORE PATRIZI
J. BRENDAN BRADY	FREDERIC W. HALL	RALPH L. PHELPS
H. SEWALL BRADLEY	MRS. LAWRENCE W. HARRIS	MRS. M. C. PORTER
ARTHUR MERRILL BROWN, JR.	MRS. ROBERT H. HAWLEY	MRS. STANLEY POWELL
W. N. BURKHARDT	J. EMMET HAYDEN	STANLEY POWELL
GUIDO CAGLIERI	TIMOTHY HEALY	ANGELO J. ROSSI
MRS. GEORGE T. CAMERON	CHARLES H. KENDRICK	A. SBARBORO
GEORGE T. CAMERON	SAMUEL KNIGHT	FRED R. SHERMAN
CHARLES A. CHRISTIN	MRS. MARCUS S. KOSHLAND	PAUL SHOUP
HORACE B. CLIFTON	LEWIS A. LAPHAM	MRS. M. C. SLOSS
TEMPLETON CROCKER	MRS. STINE LEIS	MRS. SIGMUND STERN
W. W. CROCKER	J. B. LEVISON	MRS. DAVID ARMSTRONG TAYLOR
GEORGE E. CROTHERS	MISS EDITH LIVERMORE	M. C. THRELKELD
MISS MARY C. DUNHAM	M. E. LOMBARDI	RICHARD M. TOBIN
SIDNEY M. EHRMAN	MISS RUTH W. LORING	NION R. TUCKER
MILTON H. ESBERG	MISS SALLIE MAYNARD	RANDOLPH C. WALKER
MRS. CHARLES N. FELTON	MRS. C. O. G. MILLER	WHITNEY WARREN, JR.

## WAR MEMORIAL OPERA HOUSE

*[Owned and operated by City and County of San Francisco]*

### BOARD OF TRUSTEES:

J. H. THRELKELD <i>President</i>	RALPH J. A. STERN <i>Vice-President</i>	W. C. DOUGLAS <i>Secretary to the Board</i>
HORACE B. CLIFTON	RAMSAY MORAN	DR. ALANSON WEEKS
THOMAS M. FOLEY	ALLISON F. SCHOFIELD	SELBY C. OPPENHEIMER <i>Managing Director of the War Memorial</i>
FREDERICK J. KOSTER	JOHN J. SULLIVAN	
HARRY A. MILTON	COL. WILLIAM H. TOBIN	

LIBRETTO OF OPERAS on Sale in Foyer    ✓    BUFFET SERVICE in Basement  
Promenade    ✓    For LOST AND FOUND Information,  
Inquire at Check Room No. 1



# SAN FRANCISCO OPERA COMPANY

GAETANO MEROLA, *General Director*

PETER CONLEY, *Business Manager*

MILTON H. ESBERG  
*Chairman Production Committee*

ARMANDO AGNINI  
*Stage and Technical Director*

WILLIAM TYROLER  
*Chorus Master*

STANLEY MACLEWEE  
*Production Comptroller*

HERBERT GRAF  
*Guest Stage Director*

WILLIAM CHRISTENSEN  
*Ballet Master*

CURRAN SWINT  
*Publicity Director*

## CONDUCTORS

GAETANO MEROLA      FRITZ REINER      GENNARO PAPI      ERICH LEINSDORF

## ASSISTANT CONDUCTORS

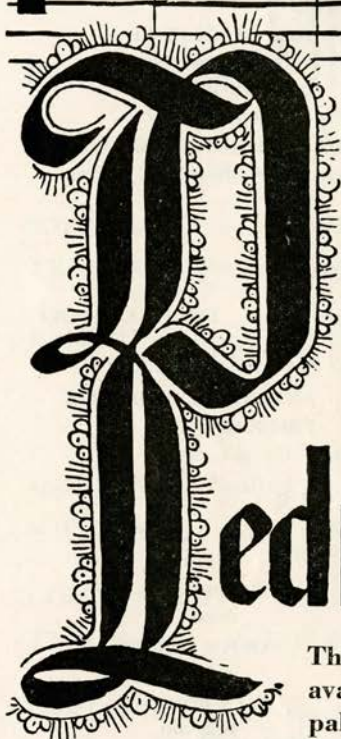
OTELLO CERONI      PIETRO CIMARA      ANTONIO DELL'OREFICE  
GIACOMO SPADONI      WILLIAM TYROLER      FREDRICK VAJDA  
WILLEM VAN DEN BURG

## GUEST ARTISTS

SALVATORE BACCALONI <i>baritone</i>	CARLTON GAULD <i>baritone</i>	ROSE PAULY <i>soprano</i>
RICHARD BONELLI <i>baritone</i>	BENIAMINO GIGLI <i>tenor</i>	EZIO PINZA <i>bass</i>
DINO BORGIOI <i>tenor</i>	JULIUS HUEHN <i>baritone</i>	OLIVE PONITZ <i>soprano</i>
GEORGES CATHELAT <i>tenor</i>	ANNE JAMISON <i>soprano</i>	LILY PONS <i>soprano</i>
GEORGE CEHANOVSKY <i>baritone</i>	IRENE JESSNER <i>soprano</i>	ELISABETH RETHBERG <i>soprano</i>
HANS CLEMENS <i>tenor</i>	CHARLES KULLMAN <i>tenor</i>	FRIEDRICH SCHORR <i>baritone</i>
NORMAN CORDON <i>bass</i>	KARL LAUFKOETTER <i>tenor</i>	EBE STIGNANI <i>soprano</i>
LOUIS D'ANGELO <i>bass</i>	GALLIANO MASINI <i>tenor</i>	CARLO TAGLIABUE <i>baritone</i>
DORIS DOE <i>contralto</i>	NICHOLAS MASSUE <i>tenor</i>	KERSTIN THORBORG <i>contralto</i>
MAFALDA FAVERO <i>soprano</i>	JANINE MICHEAU <i>soprano</i>	THELMA VOTIPKA <i>soprano</i>
ARNOLD GABOR <i>baritone</i>	LUDOVICO OLIVIERO <i>tenor</i>	ALESSANDRO ZILIANI <i>tenor</i>

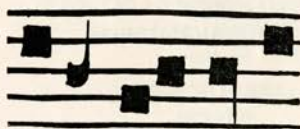
## RESIDENT ARTISTS

EVARISTO ALIBERTINI <i>bass</i>	EVE GRUNINGER <i>contralto</i>	JOHN HOWELL <i>baritone</i>	MARY HELEN MARKHAM <i>soprano</i>
ALICE AVAKIAN <i>contralto</i>	LESLIE GEORGE <i>tenor</i>	LINA KROPH <i>soprano</i>	ALMA MICHELINI <i>soprano</i>
SUE BELL BROWNE <i>soprano</i>	CARL HAUGE <i>tenor</i>	MAX LORENZINI <i>baritone</i>	MALCOLM YOUNGS <i>baritone</i>
DOROTHY CORNISH <i>soprano</i>	HILDA HERZ <i>soprano</i>	KATHLEEN LAWLOR <i>soprano</i>	FRANK PALUMBO <i>baritone</i>
LELIA GAMBI <i>contralto</i>			PAUL WALTI <i>tenor</i>



Bottled in Jerez, Spain

# From the bodegas of Pedro Domecq



The Sherries of Pedro Domecq are now available in great variety to suit every palate and every purse. If your taste is for a sweet wine we have mahogany-hued *Olorosos* rich in the benefactions of antiquity. For those who prefer the dryer types there are Domecq *Amon-tillados* and *Finos* of great distinction. To serve Sherry is good taste. To serve Domecq Sherry is discrimination.



**I**F you can learn to say Domecq when you ask for Sherry you will never be disappointed in the quality of your wine. Sold at package liquor stores and served by leading hotels and restaurants.

---

Served at the Opera House BUFFET

# CHORAL ENSEMBLE

HORACE B. CLIFTON, *Chairman Chorus Committee*

## SOPRANOS AND CONTRALTOS

JEAN BALFOUR	MARGARET GIBSON	HELEN KUMMERFELD	DOROTHY ROBERTS
SUE BELL BROWNE	CECILIA GIOVINE	CHARLOTTE LANDAN	DONNA SHERMAN
ELSA CALFEE	ELIZABETH HACKETT	KATHLEEN LAWLOR	PATTIE STEVENS
LAURRAN CHINN	JEAN HARTMAN	ROSE LIEBER	LILLIAN SWANSON
DELMIRA COZZA	CLARA HETRICK	MARJORIE MCCARTHY	MICHELINA TERRANOVA
JAYNE COZZENS	HILDA HERZ	MARY HELEN MARKHAM	RITA VIENNA
LOUISE DALY	NEURE JORJORIAN	DOROTHY MOSHER	EDITH WISHART
LELIA GAMBI	FLORENCE KNIPSCHER	MARGARET RITTER	

## TENORS, BARITONES AND BASSES

EVARISTO ALIBERTINI	PAUL GUENTER	DONALD LAYMAN	ANTONIO RAVANO
SYLVESTER ANDERSON	ARTHUR COLIN HARVEY	MAX LORENZINI	ALLEN SCHMIDLING
THOMAS BENNETT	EARL HENTZY	EDWARD LOUGHERY	NICHOLAI SOHANOFF
ALTON BERNHARD	WILLIAM HICKS	ALLEN LOUW	MARCO SORISIO
LOUIS BRAUNSTEIN	NASE HILL	GINO MANCINI	JOHN SPITTLE
JOHN J. COLLINS	BENJAMIN KEENEY	ALFRED MEYERS	MICHAEL SUSOFF
AMERIGO DEL GRANDE	NICKOLAS KEMARSKY	STANLEY NOONAN	FREDRICK WAHLIN
MAX EDWARDS	WALLACE KEMPER	EVERETT NYGAARD	PAUL WALTI
MARCEL FIORE	FREDERICK KOENS	ALBERT OLIVER	CHARLES WARD
ROY GARDEN	ALEX KLIMENKO	FRANK OTTO	EARNEST WOODMAN
LESLIE GEORGE	ALFRED KRASE	FRANK PALUMBO	MALCOLM YOUNGS
GIOVANNI GERMANETTI	WILLIAM LAIDIG	SUMNER PAYNE	

# BALLET

NION R. TUCKER, *Chairman Ballet School Committee*

	<i>Soloists</i>	<i>Corps de Ballet</i>	<i>Corps de Ballet</i>
WILLAM CHRISTENSEN <i>Choreographer and Director San Fran- cisco Opera Ballet School</i>	JACQUELINE MARTIN	MISSIS	DOROTHY NEIPER
	ZELDA NERINA	PEGGY BATES	WANA WENNERHOLM
	JULIA RANDALL	JEAN DALZIEL	BARBARA WOOD
NINA VERCHININA <i>Guest Choreographer</i>	NADA RAYBURN	MADELINE DEL MOTTE	MESSRS.
	MARIA TOVANYA	BETTE JEAN GERLACH	GRANT CRISTEN
DEANE CROCKETT <i>Assistant Director</i>	MERLE WILLIAMS	MATTLYN GEVURTZ	ROBERT FRANKLIN
	RONALD CHETWOOD	JEAN HAYES	ROBERT KEEVER
JANET REED <i>Prima Ballerina</i>	JAMES STARBUCK	ZOYA LEPORSKY	JAMES LYON
		NORMA NEILSEN	FRANK MAROSCO
			FREDERICK STAVER

**D. C. HEGER**  
**Importers and Shirt Makers**  
 170 SUTTER STREET

Carry a large and most exclusive selection of materials for *Made-to-Measure* Shirts, Pajamas and Robes.

In the seven states of the Pacific slope two generations of men most distinctive in Dress have turned to D. C. HEGER for their *Made-to-Measure* Shirts—Pajamas—Robes and Underwear.

Neckties—Handkerchiefs—Hosiery to harmonize with shirtings.

In Paris  
 12 Rue Ambroise Thomas

D. C. HEGER  
 170 SUTTER STREET

In Los Angeles  
 614 South Olive Street



ORIGINAL STEEL ENGRAVING



**Proud Traditions...**

... the Opera ... and jewels by  
 SHREVE, TREAT & EACRET! Both  
 brilliantly woven into the romantic,  
 glamorous pattern that is San Francisco.

**SHREVE, TREAT & EACRET**

PEARL AND GEM SPECIALISTS  
 JEWELERS AND SILVERSMITHS  
 ONE · THREE · SIX GEARY ST.



# ARTISTS OF *San Francisco* OPERA COMPANY



ELISABETH RETHBERG



GALLIANO MASINI



BENIAMINO GIGLI



LILY PONS



DINO BORGIOLI



MAFALDA FAVERO



ROSE PAULY



GEORGES CATHELAT



EBE STIGNANI



RICHARD BONELLI



EZIO PINZA



JANINE MICHEAU



CARLO TAGLIABUE



FRIEDRICH SCHORR



NICHOLAS MASSUE



SALVATORE BACCALONI



# PETER CONLEY

## Regular De Luxe Series at the Opera House

FRITZ KREISLER, <i>Violinist</i> . . . . .	Friday Eve., Nov. 4
RACHMANINOFF, <i>Pianist</i> . . . . .	Friday Eve., Nov. 18
HEIFETZ, <i>Violinist</i> . . . . .	Monday Eve., Jan. 9
JOSEF HOFMANN, <i>Pianist</i> . . . . .	Tuesday Eve., Feb. 14
MARIAN ANDERSON, <i>Contralto</i> . . . . .	Tuesday Eve., Feb. 21
RICHARD TAUBER, <i>Tenor</i> . . . . .	Thursday Eve., Mar. 2

Season Tickets for the Six Attractions: \$9.90, \$7.50, \$5.00, including tax

## Sunday Afternoon Series at the Opera House

FRITZ KREISLER, <i>Violinist</i> . . . . .	Sunday Aft., Nov. 6
YEHUDI MENUHIN, <i>Violinist</i> . . . . .	Sunday Aft., Nov. 13
RACHMANINOFF, <i>Pianist</i> . . . . .	Sunday Aft., Nov. 20
JOSE ITURBI, <i>Pianist</i> . . . . .	Sunday Aft., Jan. 8
MARIAN ANDERSON, <i>Contralto</i> . . . . .	Sunday Aft., Feb. 26
RICHARD TAUBER, <i>Tenor</i> . . . . .	Sunday Aft., Mar. 5

Season Tickets for the Six Attractions: \$9.90, \$7.50, \$5.00, including tax

SEASON AND SINGLE TICKETS NOW ON SALE



# A T T R A C T I O N S

## Vocal Series at the Opera House

BENIAMINO GIGLI, <i>Tenor</i> . . . . .	Wednesday Eve., Nov. 9
KATHRYN MEISLE, <i>Contralto</i> . . . . .	Thursday Eve., Feb. 16
IGOR GORIN, <i>Sensational New Baritone</i> . . . . .	Friday Eve., Mar. 10
RICHARD CROOKS, <i>Tenor</i> . . . . .	Tuesday Eve., Mar. 28
JAN KIEPURA, <i>Tenor</i> . . . . .	Wednesday Eve., Apr. 19

Season Tickets for the Five Attractions: \$8.25, \$6.25, \$4.15, including tax

## Curran Theatre Series (Sunday Afternoons)

LA ARGENTINITA SPANISH DANCE ENSEMBLE . . . . .	Sunday Aft., Dec. 11
ANGNA ENTERS . . . . .	Sunday Aft., Jan. 29
TRUDI SCHOOP COMIC BALLET . . . . .	Sun. Aft. or Eve., Feb. 26
COMEDIAN HARMONISTS "European Sextet of <i>Musical Mischief-Makers</i> " . . . . .	Sunday Aft., Mar. 5
HUMPHREY-WEIDMAN DANCE GROUP . . . . .	Sunday Aft., Apr. 23

Season Tickets for the Five Events: \$8.25, \$6.25, \$4.15, including tax

## Special Attractions

HANYA HOLM <i>Dance Group</i> . Curran Theatre . . . . .	Sunday Aft., Nov. 20
ARTUR SCHNABEL . . . . . Curran Theatre . . . . .	Sunday Aft., Apr. 16

SEASON AND SINGLE TICKETS NOW ON SALE



RACHMANINOFF

JAN KIEPURA

ANGNA ENTERS

RICHARD CROOKS

JOSE ITURBI

JOSEF HOFMANN

MARIAN  
ANDERSON

KATHRYN MEISLE

BENIAMINO  
GIGLI

FRITZ KREISL

# SAN FRANCISCO SYMPHONY ORCHESTRA

PIERRE MONTEUX, Conductor

WILLEM VAN DEN BURG, Associate Conductor

LEONORA WOOD ARMSBY, Managing Director

PETER CONLEY, Business Manager

## OPERA HOUSE SEASON 1939

- Friday Afternoon, Jan. 6 }  
Saturday Evening, Jan. 7 } JOSE ITURBI, *Pianist*
- Friday Afternoon, Jan. 13 }  
Saturday Evening, Jan. 14 } NO GUEST ARTIST
- Friday Afternoon, Jan. 20 }  
Saturday Evening, Jan. 21 } LUBOSCHUTZ & NEMENOFF,  
*Duo Pianists*
- Friday Afternoon, Feb. 3 }  
Saturday Evening, Feb. 4 } STRAVINSKY, *Guest Conductor*
- Friday Afternoon, Feb. 24 }  
Saturday Evening, Feb. 25 } PAUL HINDEMITH, *Conductor, Violist*
- Friday Afternoon, Mar. 3 }  
Saturday Evening, Mar. 4 } NO GUEST ARTIST
- Friday Afternoon, Mar. 10 }  
Saturday Evening, Mar. 11 } ALEX BRAILOWSKY, *Pianist*
- Friday Afternoon, Mar. 17 }  
Saturday Evening, Mar. 18 } ROLAND HAYES, *Tenor*
- Friday Afternoon, Mar. 24 }  
Saturday Evening, Mar. 25 } ROBERT CASADESUS, *Pianist*
- Friday Afternoon, Mar. 31 }  
Saturday Evening, Apr. 1 } NATHAN MILSTEIN, *Violinist*
- Friday Afternoon, Apr. 14 }  
Saturday Evening, Apr. 15 } TITO SCHIPA, *Tenor*
- Friday Afternoon, Apr. 28 }  
Saturday Evening, Apr. 29 } E. ROBT. SCHMITZ, *Piano*  
NAOUM BLINDER, *Violin*  
HENRY WOEMPNER, *Flute*
- Friday Afternoon, May 5 }  
Saturday Evening, May 6 } CLOSING PAIR



HENRY WOEMPNER

ROLAND HAYES

E. ROBT. SCHMITZ

NAOUM BLINDER

ROBERT CASADESUS

PAUL HINDEMITH



TITO SCHIPA

LUBOSHUTZ & NEMENOF

IGOR STRAVINSKY

ALEX BRAILOWSKY

JOSE ITURBI

NATHAN MILSTEIN

# SAN FRANCISCO SYMPHONY ORCHESTRA

*Reduced Season Ticket Prices*

(13 Concerts for the Price of 12)

Tax Exempt

*Thirteen Friday Afternoons at 2:30*

Orchestra, 1st 5 Rows . . .	\$24.00	Dress Circle, 1st 5 Rows . . .	\$18.00
Orchestra, Next 23 Rows . . .	30.00	Dress Circle, Next 6 Rows . . .	12.00
Grand Tier, 1st 3 Rows . . .	30.00	Balcony Circle, All Seats . . .	9.00
Grand Tier, Next 2 Rows . . .	24.00	Balcony, All Seats . . . . .	6.00
Boxes of 8 Seats . . . . .	\$288.00		

*Thirteen Saturday Nights at 8:30*

Orchestra, All Seats . . . . .	\$12.00	Balcony Circle, All Seats . . .	\$ 9.00
Grand Tier, All Seats . . . . .	12.00	Balcony, All Seats . . . . .	6.00
Dress Circle, All Seats . . . . .	9.00	Boxes of 8 Seats . . . . .	144.00



PIERRE MONTEUX  
Conductor



WILLEM VAN DEN BURG  
Associate Conductor

● Season Tickets Now on Sale ●  
OPERA HOUSE BOX OFFICE

*San Francisco Opera Association*

**LOS ANGELES SEASON, NOV. 5 TO 12**

ANDREA CHENIER, Sat. Eve., Nov. 5 · · · DIE MEISTERSINGER, Mon. Eve.,  
Nov. 7 · · · PELLEAS ET MELISANDE, Tues. Eve., Nov. 8 · · · ELEKTRA,  
Thurs. Eve., Nov. 10 · · · LE COQ D'OR, Fri. Eve., Nov. 11 · · · CAVALLERIA  
RUSTIGANA followed by LA BOHEME, Sat. Eve., Nov. 12.

SACRAMENTO AUDITORIUM, Oct. 27, LUCIA DI LAMMERMOOR

**GOLDSTEIN & CO.**

ESTABLISHED 1868

**COSTUMERS**

*for*

**SAN FRANCISCO OPERA ASSOCIATION**

989 Market Street

Garfield 5150



*The Moët and Chandon*

families have been closely associated with the history of Champagne and particularly with the development of Champagne wine for more than two centuries.

They own the Abbaye d'Hautvillers where in 1682 the Benedictine Monk Dom Perignon devised the method of making sparkling Champagne.

Moët & Chandon has kept the time-honored traditions of Dom Perignon alive and their famous Imperial Crown and White Seal are today examples of the highest art in Champagne manufacture.

*Pacific Coast Distributors*

**GERALD F. HERRMANN CO.**

300 Front Street, San Francisco

Telephone GARFIELD 1980

# REPERTOIRE

## REGULAR SERIES

- ANDREA CHENIER (*Giordano*) . . . . . *Friday Night, October 7, at 8:00*  
With Gigli, Rethberg, Doe, Kroph, Bonelli, Howell, Oliviero, Cehanovsky, D'Angelo, Gabor,  
Cordon. MEROLA, Conductor.
- DON GIOVANNI (*Mozart*) . . . . . *Monday Night, October 10, at 8:00*  
With Pinza, Rethberg, Borgioli, Baccaloni, Jessner, Favero, D'Angelo, Cordon.  
REINER, Conductor.
- MARTHA (*Von Flotow*) . . . . . *Wednesday Night, October 12, at 8:15*  
With Favero, Doe, Gigli, Baccaloni, Cordon, D'Angelo, Votipka, Balfour, Lawlor, Gambi,  
Palumbo. PAPI, Conductor.
- DIE MEISTERSINGER (*Wagner*) . . . . . *Friday Night, October 14, at 7:45*  
With Schorr, Jessner, Thorborg, Kullman, Laufkoetter, Gauld, Clemens, D'Angelo, Gabor,  
Huehn, George, Cehanovsky, Hauge, Cordon, Howell. REINER, Conductor.
- CAVALLERIA RUSTICANA (*Mascagni*) . . . . . *Monday Night, October 17, at 8:00*  
With Stignani, Ziliani, Tagliabue, Doe, Votipka. MEROLA, Conductor.  
*followed by*
- DON PASQUALE (*Donizetti*) . . . . . PAPI, Conductor.  
With Baccaloni, Favero, Borgioli, Bonelli, Oliviero.
- PELEAS ET MELISANDE (*Debussy*) . . . . . *Wednesday Night, October 19, at 8:00*  
With Cathelat, Micheau, Gauld, Doe, Jamison, D'Angelo. LEINSDORF, Conductor.
- LUCIA DI LAMMERMOOR (*Donizetti*) . . . . . *Friday Night, October 21, at 8:15*  
With Pons, Masini, Tagliabue, Votipka, Cordon, Oliviero, George. PAPI, Conductor.
- ELEKTRA (*Richard Strauss*) . . . . . *Monday Night, October 24, at 9:00*  
With Pauly, Jessner, Thorborg, Laufkoetter, Huehn, Cordon, Markham, Herz, Ponitz, Doe,  
Kroph, Avakian, Votipka, Michelini, Clemens, Youngs REINER, Conductor.
- LA FORZA DEL DESTINO (*Verdi*) . . . . . *Friday Night, October 28, at 8:00*  
With Rethberg, Gigli, Bonelli, Doe, Votipka, Pinza, Baccaloni, D'Angelo, Howell, Oliviero.  
PAPI, Conductor.
- LA BOHEME (*Puccini*) . . . . . *Monday Night, October 31, at 8:15*  
With Favero, Jamison, Masini, Tagliabue, Cehanovsky, Pinza, D'Angelo, Oliviero, Walti.  
PAPI, Conductor.
- LE COQ D'OR (*Rimsky-Korsakov*) . . . . . *Thursday Night, November 3, at 8:30*  
With Pons, Pinza, Doe, Votipka, Cordon, Massue. PAPI, Conductor.

## POPULAR SERIES

- ANDREA CHENIER (*Giordano*) . . . . . *Saturday Night, October 15, at 8:00*  
With Gigli, Rethberg, Doe, Kroph, Bonelli, Howell, Oliviero, Cehanovsky, D'Angelo, Gabor,  
Cordon. MEROLA, Conductor.
- CAVALLERIA RUSTICANA (*Mascagni*) . . . . . *Saturday Night, October 22, at 8:00*  
With Stignani, Masini, Tagliabue, Doe, Votipka. MEROLA, Conductor.  
*followed by*
- DON PASQUALE (*Donizetti*) . . . . . PAPI, Conductor.  
With Baccaloni, Favero, Borgioli, Bonelli, Oliviero.
- LUCIA DI LAMMERMOOR (*Donizetti*) . . . . . *Saturday Night, October 29, at 8:15*  
With Pons, Masini, Tagliabue, Votipka, Cordon, Oliviero, George. PAPI, Conductor.


## EXTRA PERFORMANCES

- DON GIOVANNI (*Mozart*) . . . . . *Thursday Night, October 20, at 8:00*  
With Pinza, Rethberg, Borgioli, Baccaloni, Jessner, Favero, D'Angelo, Cordon.  
REINER, Conductor.
- BARBER OF SEVILLE (*Rossini*) . . . . . *Sunday Afternoon, October 23, at 2:15*  
With Borgioli, Tagliabue, Micheau, Baccaloni, Cordon, Gruninger, Oliviero.  
MEROLA, Conductor.
- DIE MEISTERSINGER (*Wagner*) . . . . . *Wednesday Night, October 26, at 7:45*  
With Schorr, Jessner, Thorborg, Kullman, Laufkoetter, Gauld, Clemens, D'Angelo, Gabor,  
Huehn, George, Cehanovsky, Hauge, Cordon, Howell. REINER, Conductor.
- ELEKTRA (*Richard Strauss*) . . . . . *Sunday Afternoon, October 30, at 3:00*  
With Pauly, Jessner, Thorborg, Laufkoetter, Huehn, Cordon, Markham, Herz, Ponitz, Doe,  
Kroph, Avakian, Votipka, Michelini, Clemens, Youngs. REINER, Conductor.
- LA FORZA DEL DESTINO (*Verdi*) . . . . . *Tuesday Night, November 1, at 8:00*  
With Rethberg, Gigli, Tagliabue, Doe, Votipka, Pinza, Baccaloni, D'Angelo, Howell, Oliviero.  
PAPI, Conductor.

Buffet Service in Lower Foyer. Use Elevators During Intermissions. Bell rings 3 minutes before curtain

# BEFORE AND AFTER THE OPERA



Enjoy **ACME**   
Dietetically NON-FATTENING

Friday Night, October 7, at 8:00 ☆

# ANDREA CHENIER

- . . . . . An opera in four acts.
- Music by Umberto Giordano.
- Text (in Italian) by Luigi Illica

## *The Cast*

Andrea Chenier, a poet of the French

Revolution . . . . . BENIAMINO GIGLI

Madeleine, daughter of the Countess

de Coigny . . . . . ELISABETH RETHBERG

Countess de Coigny . . . . . DORIS DOE

Bersi, Madeleine's maid . . . . . LINA KROPH

Gerard, footman at the Chateau, later

a Revolutionist . . . . . RICHARD BONELLI

Major-domo at the Chateau . . . . . MAX LORENZINI

Fleville, a novelist pensioner of the King . . . . . JOHN HOWELL

The Abbe . . . . . LUDOVICO OLIVIERO

A Spy for the Revolutionists . . . . . LUDOVICO OLIVIERO

Roucher, Chenier's friend . . . . . GEORGE CEHANOVSKY

Madelon, a blind woman . . . . . DORIS DOE

Mathieu, a revolutionist . . . . . LOUIS D'ANGELO

Fouquier-Tinville, public prosecutor . . . . . ARNOLD GABOR

Dumas, President of the Revolutionary

Tribunal . . . . . NORMAN CORDON

Schmidt, jailer at St. Lazare . . . . . ARNOLD GABOR

Roger Albert, a boy . . . . . ZELDA NERINA

*Beggars, Fishwives, Sanculots, Gendarmes, Servants, etc.*

Incidental Dances by Corps de Ballet

*Stage Director*

ARMANDO AGNINI

*Conductor*

GAETANO MEROLA

*Chorus Master*

WILLIAM TYROLER

## *Time and Place*

The French Revolution; Paris.

ACT I: Ballroom of Chateau de Coigny.

ACT II: Café Hottot in Paris.

ACT III: Revolutionary Tribunal and  
Prison of St. Lazare.

ACT IV: Same as Act III—At Dawn.

☆ POPULAR PERFORMANCE OF "ANDREA CHENIER," SATURDAY, OCT. 15

*Bell rings three minutes before curtain rises • Encores not permitted*

*Seats for All Performances at Kohler & Chase and Opera House Box Office*



## THE STORY OF "ANDREA CHENIER"

ACT I: The footman, Gerard, is arranging the ballroom for a reception. Under the flunkey's livery beats the heart of a freeman, and at the sight of his father, stooped by sixty years of service, he bursts forth in bitter denunciation of the aristocrats. Madeleine, daughter of the Countess, comes in with her maid Bersi. Gerard's bitterness leaves him and he is conscious only of her gentle loveliness and the joy her presence gives him. The guests arrive: a dignitary of the Church, lords and ladies, and Andrea Chenier. The latter is out of place in the frivolity of the ballroom and stands unresponsive to the general chatter. Only when Madeleine, in a spirit of coquetry, goads him to reply does he launch into impassioned improvisation—an appeal for the poor. The guests are shocked, Madeleine alone being stirred by the rebuke. A crowd of ragged beggars appear and appeal for aid but are ejected. Gerard is hustled out with them and Chenier follows.

ACT II: Five years have elapsed. From denouncing the tyranny of the aristocrats, Chenier has turned to attack the excesses of the revolution and Robespierre's spies are watching him. One sits at table with Bersi. In vain Chenier's friend Roucher begs him to escape from France. But Chenier insists on keeping an appointment with an unknown woman with whom he has long corresponded. Roucher suggests that the unknown may be a detested aristocrat. The revolutionary leaders pass by, among them Robespierre and Gerard. While Bersi talks with Roucher, Gerard takes his spy aside and gives him a description of Madeleine whom he still hopelessly loves and seeks. The unknown arrives in disguise but identifies herself to Chenier as Madeleine by quoting the words of the poem he had improvised the night of her ball. A spy observes them. He sends word to Gerard who bursts in on them. Fighting with Chenier, Gerard is wounded, but begs Chenier to save Madeleine and the two flee.

ACT III: Mathieu and Gerard are exhorting the crowd for money for France. A spy informs Gerard that Chenier has been found, but without Madeleine, and persuades Gerard to write a denouncement of Chenier. Madeleine comes and Gerard informs her that her lover has been seized. He tells her also that she has been his one desire and to save Chenier she offers herself as the price of his life. Gerard is touched by her devotion. He would even save Chenier but it is too late. Chenier is brought to trial. Gerard confesses his jealous treachery against Chenier, but without avail. Chenier is condemned to die.

ACT IV: Chenier is writing his last poem. As he reads his verses to Boucher, Madeleine and Gerard enter the courtyard. Madeleine, so that she may share death with Chenier, bribes a jailer to let her take the place of a condemned woman. In the last few minutes the lovers have of life they give thanks for their love and the fate which brought them to each other's arms. The guards summon the prisoners and the two go forth to death, united.



*"It's the flavour"*



86 PROOF

**Teacher's** keeps its balance. That's why men like Teacher's taste. It's hearty, but not heavy. It's smooth, and not too sweet. Those are the usual reasons men give in expressing their preference for Teacher's Scotch.

Made since 1830 by Wm. Teacher & Sons, Ltd., Glasgow  
SOLE U. S. AGENTS: Schieffelin & Co.,  
NEW YORK CITY • IMPORTERS SINCE 1794

California Distributors:

**PARROTT & CO.,** 320 California Street, San Francisco

# The World's greatest Artists



KIRSTEN FLAGSTAD



JOHN CHARLES THOMAS



## CURRENT SEASON OPERAS OBTAINABLE

Complete ON VICTOR RECORDS

**DON GIOVANNI**—sung by the Glyndebourne Festival Company complete in three volumes M423, M424, M425.

**DON PASQUALE**—sung by La Scala Opera Company, featuring Tito Schipa. Complete in Victor Album M187.

**CAVALLERIA RUSTICANA**—sung by La Scala Opera Company complete in Victor Album M98.

**LA BOHEME**—sung by La Scala Opera Company complete in Victor Album M35.

**PELLEAS ET MELISANDE**—sung by members and orchestra of the Paris Opera-Comique. Representative excerpts in Victor Album M68.

**STARS OF THE CURRENT SEASON SING YOUR FAVORITE ARIAS ON VICTOR RECORDS**

**GIGLI**—sings Rudolph's Narrative from **LA BOHEME**.

**LILY PONS**—sings the Mad Scene from **LUCIA DI LAMMERMOOR**.

**FRIEDRICH SCHOOR**—sings the "Flieder Monolog" and the Monolog from Act III of **DIE MEISTERSINGER**.

**GIGLI**—sings "Solenne in Quest'Ora" from **FORZA DEL DESTINO** (with De Luca).  
**EZIO PINZA**—sings the Serenade from **DON GIOVANNI**.

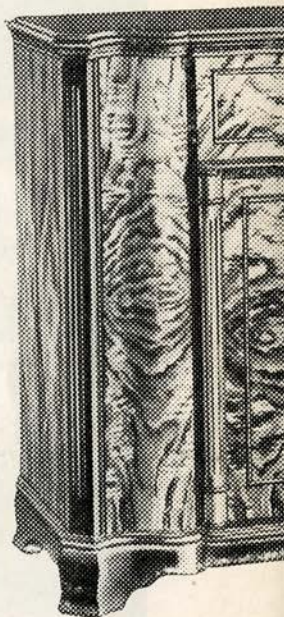
**RETHBERG**—sings "Batti, Batti, O bel Masetto" from **DON GIOVANNI**.

**GIGLI**—sings "M'appari" from **MARTHA**.

*Many Other Beautiful Operatic Recordings Obtainable*

hear them

RCA V



### Exquisite

(Model U-134) a 16-tube record changer for 10" super-sensitive speaker, seas Dial, Magic Brain, M Voice ✓ The finest ins

CONSULT THESE OUTSTANDING MUSIC MERCHANTS

**O'CONNOR,  
MOFFATT**

AND COMPANY  
STOCKTON at O'FARRELL  
SU TTER 1800

**CITY OF PARIS**

DOUGLAS 4500  
PAUL VERDIER, Pres.

**RADIO RECORDS—**  
NORMANDY LANE

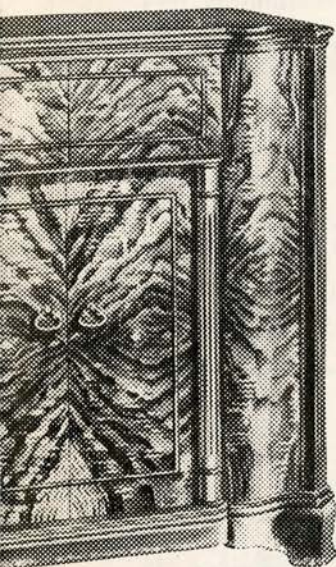
**THE EMPORIUM**

MARKET OPPOSITE POWELL  
EXBROOK 6800  
SAN FRANCISCO

# ists are on Victor Records

... with a new

## VICTROLA



### LIFE-LIKE TONE THRU HI-FIDELITY

WHEN you hear a Victor Record played on one of the new RCA Victrolas, the effect of reality is impressive. That's because RCA Victrolas reproduce with perfect fidelity the entire tonal range. If you enjoy fine music—hear one of the new 1939 RCA Victrolas and you will readily appreciate the wealth of listening pleasure obtainable.



LILY PONS

### WORLD WAVE RADIO

RCA Victor's finest radio receivers are used in the new 1939 Victrolas with all of the newest features. Electric tuning, the overseas dial, electrical magic voice, magic eye, and high fidelity. Truly, the world is at your fingertips with these new radio receivers.



LAWRENCE TIBBETT

### 18TH CENTURY

... instrument with automatic  
... 12" records, High Fidelity,  
... Electric Tuning, 7-band Over-  
... Magic Eye, and Electrical Magic  
... instrument your money can buy!

### FINE VALUES

No investment can bring you larger dividends of happiness. Few pleasures can be so inexpensive.

You get more for your money today than ever before.

## CHANTS FOR RCA VICTROLAS AND RECORDS

### THE WHITE HOUSE

FOURTH FLOOR

RAPHAEL WEILL & COMPANY

### SHERMAN, CLAY & CO.

*In San Francisco:*

KEARNY AT SUTTER

*In Oakland:*

H. C. CAPWELL'S, 4th Floor

Ten Pacific Coast Stores

### SCHWABACHER- FREY

Market opposite Grant Ave.

DOUGLAS 4848

*Coming...*

*Spectacular Phantasy of Mystery*

MEMORIAL OPERA HOUSE  
S A N F R A N C I S C O || NOV. 11 - 12

**S. JUHASZ SHEPARD** "THE MASTER  
MAGICIAN"

P R E M I E R  
P R E S E N T A T I O N "A Magical Symphony"

Introducing His Latest European and Oriental Sensations

**"THE HINDU ROPE TRICK"**

"THE ENCHANTED BALLET"

"THE MAGICIAN'S BRIDE"

"THE GUILLOTINE MYSTERY"

SYMPHONY ORCHESTRA  
CONDUCTED BY WALTER HERBERT

Tickets 50c, \$1.00, \$1.50, \$2.00, \$2.50, plus tax

**PAUL POSZ**

P R E S E N T S

T H E G R E A T

**"BALLET CARAVAN"**

AMERICAN BALLET ENSEMBLE

METROPOLITAN OPERA

TWENTY BRILLIANT DANCERS

YOUTH ✓ BEAUTY ✓ COLOR

**MONDAY EVE., NOV. 7**

**OPERA HOUSE**

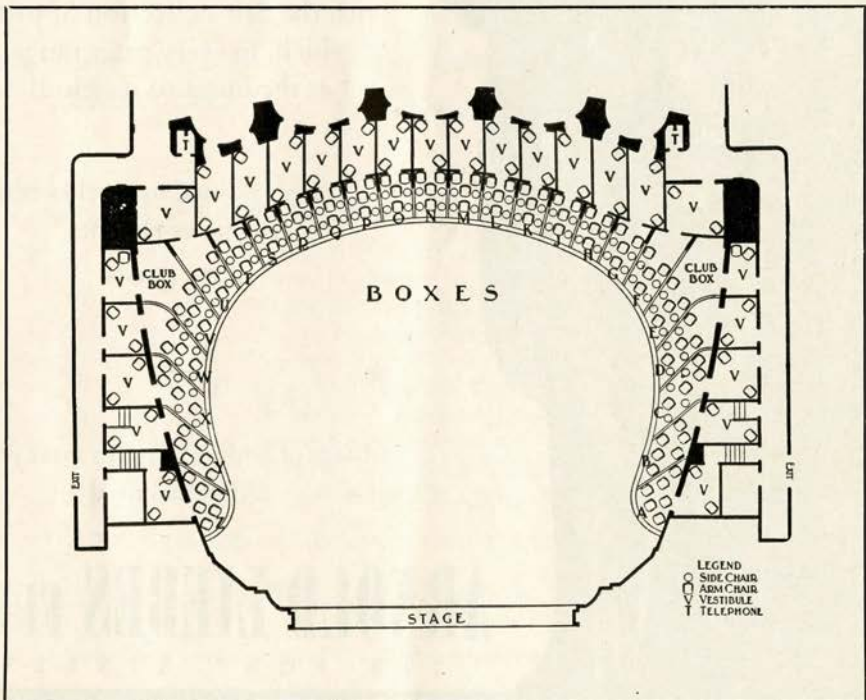
TICKETS 55¢, 83¢, \$1.10, \$1.65, \$2.20 (tax incl.)

NOW ON SALE: KOHLER & CHASE and OPERA HOUSE BOX OFFICE

Telephone EXBROOK 6696

## THE SEASON'S BOX HOLDERS

Mr. and Mrs. Charles G. Norris	A	Mr. and Mrs. Charles R. Blyth	N
Dr. and Mrs. Joseph C. Flowers	B	Mr. and Mrs. William W. Crocker	O
Mr. and Mrs. C. Robert Adams		Mr. Joseph A. Donohoe	P
Mr. and Mrs. Clarence Loran Johnston	C	Mr. and Mrs. Sidney M. Ehrman	Q
Mr. and Mrs. Frank P. Deering		Mrs. Frederick W. Bradley	R
Mr. John A. McGregor	D	Mrs. Marcus S. Koshland	
Mr. and Mrs. George T. Cameron	E	Judge and Mrs. M. C. Sloss	S
Mr. and Mrs. George A. Pope	F	Mr. and Mrs. Robert W. Miller	T
Mr. and Mrs. Joseph D. Grant		Mr. and Mrs. Maxwell C. Milton	U
Mr. and Mrs. Samuel Knight	G	Mrs. Prentis Cobb Hale	V
Mr. and Mrs. C. O. G. Miller		Dr. and Mrs.	
Mr. and Mrs. F. W. McNear	H	David Armstrong-Taylor	W
Mrs. I. W. Hellman	J	Mr. and Mrs. Felix S. McGinnis	X
Mr. and Mrs. Nion R. Tucker	K	Mr. and Mrs. Arthur Dale King	Y
Mr. and Mrs. Paul I. Fagan	L	Mrs. Sigmund Stern	Z
Mr. and Mrs.			
Mortimer Fleishhacker	M		





# FURS

*glorify the new  
femininity!*

Enveloped in glamour, in furs  
from Arnold Liebes, you'll be  
a dazzling portrait come to life!

You'll be completely  
enchanted  
with the new collection of peltry  
which, in every price range,  
is the finest of its kind!

*Sketched:* Silver Fox reaches new  
heights of elegance

1750 00



Charge or budget terms to meet your  
individual need

## ARNOLD LIEBES FURS

218 POST STREET

FURS • FUR REMODELING • FUR STORAGE

Monday Night, October 10, 8:00 ☆

# DON GIOVANNI

(First Time by San Francisco Opera Company)

- . . . Opera in two acts with ten scenes.
- Music by Wolfgang Amadeus Mozart.
- Text (in Italian) by Lorenzo da Ponte

## Cast

Don Giovanni, *a licentious young nobleman* . . . . . EZIO PINZA  
Don Pedro, *the Commandant* . . . . . NORMAN CORDON  
Donna Anna, *his daughter* . . . . . ELISABETH RETHBERG  
Don Ottavio, *her fiance* . . . . . DINO BORGIOLO  
Leporello, *servant of Don Giovanni* . . . . . \*SALVATORE BACCALONI  
Donna Elvira, *jilted by Don Giovanni* . . . . . \*IRENE JESSNER  
Masetto, *a peasant* . . . . . LOUIS D'ANGELO  
Zerlina, *his betrothed* . . . . . †MAFALDA FAVERO

\*San Francisco Début.

†American Début.

*Peasants, Musicians, Dancers, Demons*

Incidental Dances by Corps de Ballet

*Stage Director*

HERBERT GRAF

*Conductor*

FRITZ REINER

*Chorus Master*

WILLIAM TYROLER

*Time and Place* Seventh Century; Seville.

ACT I: Scene 1—Courtyard of Palace of the Commandant.  
Scene 2—Street in Suburban Seville.  
Scene 3—In Don Giovanni's Palace.  
Scene 4—A Countryside.  
Scene 5—Ballroom in Don Giovanni's Palace.  
ACT II: Scene 1—Same as Scene 2, Act I.  
Scene 2—A Dark Hallway.  
Scene 3—A Cemetery.  
Scene 4—Room in Donna Anna's Palace.  
Scene 5—In Don Giovanni's Palace.

☆ EXTRA PERFORMANCE OF "DON GIOVANNI" THURSDAY, OCTOBER 20

*Bell rings three minutes before curtain rises · Encores not permitted*

*Seats for All Performances at Kohler & Chase and Opera House Box Office*



## THE STORY OF "DON GIOVANNI"

ACT I: It is night. Leporello awaits his master, Don Giovanni, notorious enticer of women, outside the apartment of Donna Anna which he has surreptitiously entered. Believing the visitor to be her betrothed, Don Ottavio, Donna Anna did not at first repulse his advances. But discovering her mistake she cries for help. Don Giovanni now rushes into the courtyard, closely followed by Donna Anna. Her aged father, Don Pedro, the Commandant, coming in answer to her cries, is killed by Don Giovanni who, with Leporello, makes off in haste. Donna Anna, who has gone for help, returns with Don Ottavio. He joins her in a solemn oath to avenge the death of her father.

SCENE 2: On the approach of a carriage, Don Giovanni scents another amorous adventure. With Leporello he hides, lustfully awaiting its occupant. Dismayed to find her to be Donna Elvira, a former sweetheart whom he has discarded, he flees her upbraiding, leaving Leporello to explain. This the servant proceeds to do, reciting his master's thousand and one affairs with women. The nonplussed Donna Elvira swears she will have rich justice for her torn heart. The wedding party of Masetto and Zerlina enter. Don Giovanni comes upon them. Fascinated by the beauty of the bride, the libertine invites the entire company to his palace for refreshments. Threatening Masetto when he protests, Don Giovanni detains Zerlina as Leporello conducts the peasants to the palace. Don Giovanni's love-making to the bride is interrupted by the entrance of Donna Elvira, who has overheard. She denounces him and leads Zerlina away. Donna Anna and Don Ottavio arrive to seek the aid of Don Giovanni, of all persons, in finding the murderer of the Commandant, which the Don readily promises. The returning Donna Elvira, thinking she sees in Donna Anna another victim to the lust of Don Giovanni, exposes him. But he declares her to be demented and follows her away. As they depart, Donna Anna tells Don Ottavio that, by his voice, she thinks she recognizes in Don Giovanni the assassin under whose sword her father had fallen.

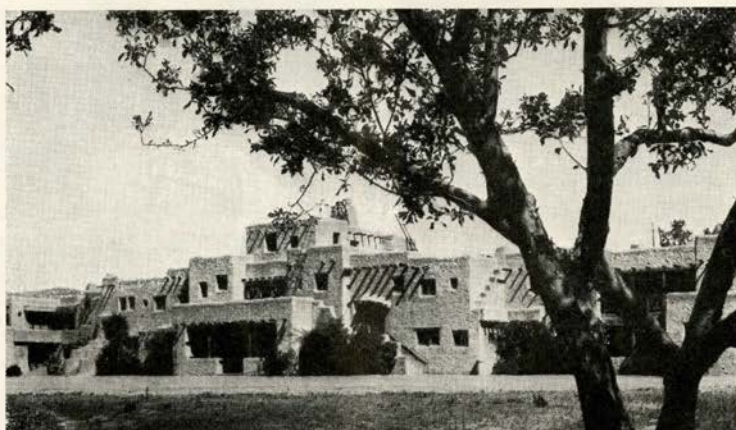
SCENE 3: Despite impending complications, Don Giovanni, returning with Leporello, sings merrily of wine and women.

SCENE 4: Masetto chides Zerlina for her flirtation with Don Giovanni. They hastily hide on the approach of the Don followed by a crowd of peasants gaily dressed for the ball. Perceiving Zerlina, Don Giovanni attempts to force her toward a pavillion. But, confronted by Masetto, he gallantly escorts her into the palace instead. Donna Elvira, Donna Anna and Don Ottavio, wearing masks and dominoes, enter. Leporello, from a balcony invites them to the ball.

SCENE 5: During the dance Don Giovanni leads Zerlina to the door of a side chamber and forces her to enter. Masetto, breaking loose from Leporello, spreads the alarm. At Zerlina's cry for help, Anna, Elvira and Ottavio rush to the rescue, breaking in the door. Don Giovanni, with drawn sword, escapes from the palace with Leporello.

*(Continued on page 37)*

# MONTEZUMA



## *The School Beautiful*

A private boarding school for boys in the Santa Cruz Mountains near Los Gatos, California

## *29th Season*

Primary, Elementary and High School Divisions . . .  
High Scholastic Rating—Accredited to California,  
Stanford and Eastern Universities . . . Special courses  
in dramatics . . . All athletics under careful supervision.

*To enroll your boy, address*

**THE MONTEZUMA SCHOOL FOR BOYS**

LOS GATOS, CALIFORNIA



# F L O W E R S

AN ULTRA-MODERN shop, where our many facilities are always ready to transform your requests into exquisite creations of artistry.

**ANGELO J. ROSSI CO., Inc.**

*Formerly: Pelicano Rossi Floral Co., Inc.*

45 GRANT AVENUE

DOUGLAS 8060



ELEGANT is the word for today's mode and for RICHARDS superbly smart coiffurers. Come in for a complimentary consultation. Complete beauty care under the direction of Marcelle Carle.

## RICHARDS

*Continental Salon de Coiffure*

45 GRANT AVENUE

SECOND FLOOR

YUkon 0821



*Enter Through Angelo Rossi Flower Shop*

# ARTISTS OF *San Francisco* OPERA COMPANY



CHARLES KULLMAN



IRENE JESSNER



KERSTIN THORBORG



NORMAN CORDON



THELMA VOTIPKA



JULIUS HUEHN



KARL LAUFKOETTER



DORIS DOE



CARLTON GAULD



ANNE JAMISON



OLIVE PONITZ



GEORGE CEHANOVSKY



ARNOLD GABOR



HANS CLEMENS



LUDOVICO OLIVIERO



ALESSANDRO ZILIANI

# SAN FRANCISCO OPERA BALLET



JANET REED  
*Premiere  
Danseuse*

WILLAM CHRISTENSEN  
*Ballet Master  
Choreographer*

NINA VERCHININA  
*Guest  
Choreographer*

## ON TOUR, SEASON 1938-1939 REPERTOIRE

Ballet Impromptu ( <i>Bach</i> )	Romeo and Juliet ( <i>Tschaikowsky</i> )
In Vienna ( <i>Strauss</i> )	Rumanian Wedding Festival ( <i>Enesco</i> )
Dances from "Bartered Bride" ( <i>Smetana</i> )	Chopinade ( <i>Chopin</i> )
Bolero ( <i>Ravel</i> )	Sketches (Divertissement, Various)
Coeur de Glace ( <i>Mozart</i> )	Caprice Espagnol ( <i>Rimsky- Korsakoff</i> )
Three Phases ( <i>Handel-Bach</i> )	Brides on Strike ( <i>Turner</i> )

## SAN FRANCISCO OPERA BALLET

FRANKLYN SMITH, *Booking Manager*  
236 VAN NESS AVENUE · SAN FRANCISCO

Maintained by The San Francisco Opera Association  
GAETANO MEROLA, *General Director*

## THE SAN FRANCISCO OPERA BALLET SCHOOL

Offers advanced courses to dancers and teachers as well  
as daily classes for beginners and intermediate students.  
All classes are open to the public

*Faculty:*

WILLAM CHRISTENSEN · NINA VERCHININA · DEANE CROCKETT

Address the Secretary, 236 Van Ness Avenue, UN derhill 4422

## PRODUCTION

ETYENNE BARONE, *Assistant Stage Director*

EDWARD ZETTEL  
*Master Electrician*

S. E. SIMMONS  
*Master of Properties*

A. L. PARKER  
*Master Carpenter*

JULIAN DOVE

FRITZ KRAENCKE  
*Scenic Artists*

S. A. FISHER

GOLDSTEIN & CO.  
*Costumes, Wigs and Makeup*

ALEXANDER AGNINI  
*Wardrobe Master*  
for the San Francisco Opera Company

EVERETT MASON  
*Chief of makeup*

PAUL PINNELL  
*Carpenter*

CHARLES HOLZMUELLER  
*Electrician*  
for the War Memorial Opera House

BENNO L. HUTSHING  
*Properties*

Scenery and properties designed by ARMANDO AGNINI  
and built by San Francisco Opera Association Studios.

## MUSIC

NAOUM BLINDER, *Concertmaster*

WALTER OESTERREICHER  
*Orchestra Manager*

JULIUS HAUG  
*Orchestra Librarian*

JEAN BALFOUR  
*Chorus Secretary*

LEA VERGANO  
*Ballet Accompanist*

## EXECUTIVE STAFF

JESSIE KEENE

GERALD G. ROSS  
*Office Secretaries*

OLGA BOSE

PHYLLIS AMATI

RAYMOND HOWARD

LAILA JACKSON

KATHLEEN LAWLOR

VICTOR LEFLER

PAUL SAUER  
*Ticket Sales*

HOWARD SKINNER

CONSTANCE ALEXANDRE  
*Social Contacts*

WILLIAM A. MEADE  
*Director of House Service*

## PROGRAM

PISANI PRINTING & PUBLISHING COMPANY † *publishers, designers and printers*

CURRAN SWINT † *program notes*

# John Walker & Co.

WINE AND SPIRIT MERCHANTS — Established 1933

## All Standard Brands at Competitive Prices

FREE DELIVERY SERVICE: San Francisco, the Peninsula and Transbay Districts

*Charge Accounts Invited :: Catalog Mailed on Request*

111 MONTGOMERY STREET

GARFIELD 1132-33

# BELFAST

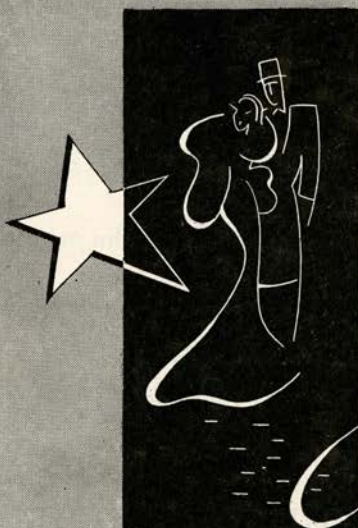
★  
*Manufactured  
by the makers  
of*  
BELFAST  
*Dry*  
GINGER ALE  
*Famous  
Since 1877*



*Sparkling  
Water*

PURE, wholesome and delightful to the taste, Belfast Sparkling Water is the ideal table beverage . . . it is *supreme* among the better mixers — heightens the flavor of other beverages and gives longer-lasting sparkle in the glass.

★  
NEW CENTURY BEVERAGE CO.  
820 Pacific Avenue      DOuglas 0547      San Francisco



*Mural Room  
Enchantment*

Dinner and supper  
dancing to the music of  
America's premier or-  
chestras... a Mural Room  
thrill not soon forgotten

**HOTEL ST. FRANCIS**

OVERLOOKING UNION SQUARE · MANAGEMENT DAN E. LONDON

## THE STORY OF "DON GIOVANNI"

(Continued from page 30)

ACT II: Zerlina is now Donna Elvira's maid, and Don Giovanni again comes wooing. He exchanges hat and cloak with Leporello. When Donna Elvira comes to her window he pretends repentance. Moved by his appeal she comes into the plaza to meet him and is led away by the disguised Leporello. Now Don Giovanni sings beneath the window of Zerlina. His song is interrupted by Masetto, entering with villagers who have come on the hunt for him. Passing himself off as Leporello, he sends the villagers on a false scent, cudgels Masetto with his own weapons, and himself steals away. Masetto, bleeding, is found by Zerlina who assures him of her love and quietly leads him from the scene.

SCENE 2: Leporello, still disguised as Don Giovanni, enters with Donna Elvira. In attempting to get away from her, he takes the wrong door and to his confusion encounters the entering Donna Anna and Don Ottavio with their attendants. Leporello and Donna Elvira conceal themselves in different places. As Don Ottavio endeavors to console Donna Anna, they attempt to escape by the same door, but run into Masetto and Zerlina and a group of armed peasants. Masetto, thinking him to be Don Giovanni, drags Leporello to the front. In fear Leporello discloses his real identity and declares himself to be the dupe of Don Giovanni. All noisily claim the right to chastise Leporello but he makes off as they argue. Now convinced that Don Giovanni murdered the Commandant, Don Ottavio vows vengeance.

SCENE 3: It is moonlight. Visible on the monument of the Commandant is the inscription: "I here await the vengeance decreed by heaven unto the wretch who slew me." Don Giovanni and Leporello, arriving by different ways, unexpectedly come upon each other. Reciting their respective adventures, they re-exchange garments. The statue of the Commandant speaks. Mystified, they try to locate the sepulchral voice. Leporello is terrified. Don Giovanni ascribes it to a practical joker. He then commands Leporello to read the inscription. The trembling servant finds many excuses but hesitantly approaches the statue, bowing and scraping. Again the statue speaks. But Don Giovanni defiantly invites the marble image of the man he has murdered to a banquet at the palace.

SCENE 4: Don Ottavio, tenderly leading Donna Anna, soothes her grief as she laments the loss of her father.

SCENE 5: Don Giovanni superintends preparations for the evening's banquet. Donna Elvira entreats him to mend his ways but he ridicules her. She rushes away but immediately returns with a terrified shriek and escapes by another door. Leporello is sent to investigate but limps back in abject fear. Don Giovanni goes out to see for himself. The lights go out. Don Giovanni reenters, backing before the statue of the Commandant. Terror strikes all hearts. Three times the marble figure commands Don Giovanni to repent. Three times Don Giovanni refuses. Hands of stone lay hold of him, flames envelop the surroundings and the licentious young nobleman, his life of lust come to an end, is carried by demons to his eternal punishment.

[FINALE] "*Such his end—who doeth ill to like account the wicked ever did come—ever will.*"





You are Cordially Invited to Inspect Our  
**New Fall** Collection of

Top Coats • Overcoats and Suits

**\$45 to \$350**

**Bullock & Jones Co.**

TAILORS & IMPORTERS OF MEN'S APPAREL

*Post Street at Union Square*

## NBC *Artist Service*

OF THE NATIONAL BROADCASTING COMPANY, INC.  
A RADIO CORPORATION OF AMERICA SERVICE

GEORGE ENGLS, *Managing Director*

O P E R A S E A S O N 1 9 3 8

*San Francisco and Los Angeles*

GEORGE CEHANOVSKY  
DORIS DOE  
ANNE JAMISON

IRENE JESSNER  
KARL LAUFKOETTER  
ELISABETH RETHBERG

FRIEDRICH SCHORR  
KERSTIN THORBERG  
EZIO PINZA

C O N C E R T S E A S O N 1 9 3 8 - 1 9 3 9

*Touring the Pacific Coast*

ARGENTINITA  
AND HER DANCE ENSEMBLE  
MARIAN ANDERSON  
DOUGLAS BEATTIE  
ALEXANDER BRAILOWSKY  
GEORGE CEHANOVSKY  
FRANK CHAPMAN  
COMEDIAN HARMONISTS  
DORIS DOE  
ANIA DORFMANN  
SUSANNE FISHER  
ROLAND GUNDRY  
JOHN GURNEY

ANNE JAMISON  
IRENE JESSNER  
FRITZ KREISLER  
KOLISCH QUARTET  
JAN KIEPURA  
SYLVIA LENT  
MISCHA LEVITZKI  
LUBOSHUTZ AND NEMENOFF  
KARL LAUFKOETTER  
CLIFFORD MENZ  
NATHAN MILSTEIN  
MONTE CARLO BALLET Russe  
EZIO PINZA

SERGE RACHMANINOFF  
ELISABETH RETHBERG  
ARTUR RUBINSTEIN  
MORIZ ROSENTHAL  
ARTUR SCHNABEL  
TRUDI SHOOP  
AND HER COMIC BALLET  
FRIEDRICH SCHORR  
ISAAC STERN  
GLADYS SWARTHOUT  
MARION TALLEY  
KERSTIN THORBERG

SAN FRANCISCO OFFICE: 111 SUTTER STREET

L. E. BEHYMER, Auditorium Building, Los Angeles, Calif.

Booking Representative for California, Utah, Nevada, Arizona, New Mexico and Northwest Texas

PETER CONLEY, Opera House • San Francisco Representative

## GUARANTOR GUILD MEMBERS

- |   |  |   |
|---|--|---|
| <p>Mrs. Gertrude S. Achilles<br/>Mrs. Lloyd Ackerman<br/>Mrs. Edson Adams<br/>Jennie S. Adler<br/>Mrs. Wallace M. Alexander<br/>Wallace M. Alexander<br/>Lucy H. Allyne<br/>Mrs. Leonora Wood Armsby<br/>Dr. Rea E. Ashley<br/>Ettore Avenali<br/>Mrs. William Babcock<br/>Mr. and Mrs. Frazer Bailey<br/>Mr. and Mrs. George W. Baker, Jr.<br/>Philip S. Baker<br/>A. R. Baldwin<br/>Mrs. B. A. Banker<br/>Mr. and Mrs. Charles Banks<br/>Dr. and Mrs. Hans Barkan<br/>Dr. and Mrs. Otto Barkan<br/>Evelyn H. Barron<br/>R. M. Barthold<br/>R. S. Beall<br/>F. J. Belcher, Jr.<br/>F. N. Belgrano, Jr.<br/>Albert M. Bender<br/>Mrs. C. H. Bentley<br/>Robert I. Bentley<br/>Mrs. W. H. Bentley<br/>Altes K. Berenson<br/>P. A. Bergerot<br/>Mr. and Mrs. Newton Bissinger<br/>Mr. and Mrs. Paul A. Bissinger<br/>Mrs. James B. Black<br/>Louis Bloch<br/>Edward J. Bloom<br/>Lorna Blumann<br/>Mr. and Mrs. Charles R. Blyth<br/>Mrs. Angus Gordon Boggs<br/>Mrs. Robert C. Bolton<br/>Mrs. F. E. Booth<br/>Effie Bovyer<br/>Louise A. Boyd<br/>Mrs. Frederick W. Bradley<br/>H. Sewall Bradley<br/>J. L. Bradley<br/>Mrs. M. J. Brandenstein<br/>Mrs. Florine H. Bransten<br/>Mrs. W. F. Breeze<br/>Misses K. and C. Breuner<br/>Elizabeth B. Brice<br/>Mrs. William Ellery Briggs<br/>George W. Brooks<br/>Mrs. Abraham Lincoln Brown<br/>Annie Florence Brown<br/>Arthur M. Brown<br/>Arthur M. Brown, Jr.</p> | <p>Mrs. Louis C. Brown<br/>Ralph Brown<br/>Susan D. Brown<br/>Mrs. E. E. Brownell<br/>Starr Bruce<br/>Barbara Burke<br/>E. G. Cahill<br/>John R. Cahill<br/>Mr. and Mrs. George T. Cameron<br/>Mrs. George W. Caswell<br/>Mrs. Selah Chamberlain<br/>Mrs. Allen L. Chickering<br/>Drew Chidester<br/>Herbert W. Clark<br/>Mrs. Warren D. Clark<br/>Mrs. Tobin Clark<br/>Herbert E. Clavburgh<br/>Horace B. Clifton<br/>Newton B. Coghill<br/>Mrs. John P. Coghlan<br/>Mr. and Mrs. George D. Cohn<br/>Mrs. Max M. Cohn<br/>Colbert Coldwell<br/>Mrs. Charles C. Cole<br/>Persis H. Coleman<br/>S. Waldo Coleman<br/>H. D. Collier<br/>Mr. and Mrs. Peter D. Conley<br/>Harris H. D. Connick<br/>Mrs. C. M. Cooper<br/>Mrs. Walter B. Cone<br/>Dr. and Mrs. Frederick C. Cordes<br/>Mr. and Mrs. Winston Cowgill<br/>Dr. Glenn Craig<br/>Mr. and Mrs. Chester R. F. Cramer<br/>Templeton Crocker<br/>Mr. and Mrs. Wm. W. Crocker<br/>Mrs. Douglas Cushman<br/>Vincent D'Amico<br/>A. de Bretteville<br/>Mrs. Charles J. Deering<br/>Frank P. Deering<br/>Mr. and Mrs. Christin de Guigne<br/>Mr. and Mrs. Georges de Latour<br/>Frank H. Denman<br/>Richard Detert<br/>Mrs. C. D. De Velbiss<br/>Mrs. Robert T. Devlin<br/>Marshall Dill<br/>Mr. and Mrs. Llovd Dinkelspiel<br/>Mrs. Samuel L. Dinkelspiel<br/>Charles Caldwell Dobie<br/>Katherine Donohoe<br/>H. B. Drescher<br/>Mr. and Mrs. J. A. Ducournau<br/>Mrs. Charles Dunphy</p> | <p>A. W. Eames<br/>Mrs. James W. Edwards<br/>Dr. Muriel E. Edwards<br/>Mr. and Mrs. Edwin W. Ehmann<br/>Albert L. Ehrman<br/>Mrs. Alfred Ehrman<br/>Mr. and Mrs. Sidney M. Ehrman<br/>Mr. and Mrs. Milton H. Esberg<br/>Milton H. Esberg, Jr.<br/>Mrs. Paul I. Fagan<br/>Mrs. William Fitzhugh<br/>Mr. and Mrs. Herbert Fleishhacker<br/>Mortimer Fleishhacker<br/>Mrs. Mortimer Fleishhacker<br/>Mr. and Mrs. Mortimer<br/>Fleishhacker, Jr.<br/>Mrs. Carrie H. Fleishman<br/>Mrs. Joseph Flowers<br/>John L. Flynn<br/>Mrs. J. A. Folger<br/>Susan Harmin Folwell<br/>John F. Forbes<br/>Mrs. R. C. Force<br/>Bernard W. Ford<br/>Calvin Franklin,<br/>NBC Artists Service<br/>Mrs. J. E. French<br/>W. H. French<br/>Wm. Fries<br/>Maurice A. Gale<br/>Mr. and Mrs. Mark Gerstle<br/>Mrs. D. Ghirardelli<br/>D. Lyle Ghirardelli<br/>Mrs. Louis Ghirardelli<br/>A. P. Giannini<br/>George B. Gillson<br/>A. J. Gock<br/>Mr. and Mrs. Louis S. Goldstein<br/>Miss Lutie D. Goldstein<br/>Mr. and Mrs. J. D. Grant<br/>Mrs. C. Hamilton Gray<br/>Gerald H. Gray<br/>Maurice S. Greenberg<br/>Miriam Griffin<br/>Mr. and Mrs. Berthold Guggenheim<br/>Mrs. Leon Guggenheim.<br/>Louis S. Haas<br/>Madeleine and William Haas<br/>Mrs. Walter A. Haas<br/>C. Nelson Hackett<br/>Mrs. J. F. C. Hagens<br/>Marshall Hale<br/>R. B. Hale<br/>Frederic W. Hall<br/>Herbert E. Hall</p> |
|---|--|---|
- (Continued on page 41)*

### SEBASTIAN BURNETTI

*Leading Baritone Opera Comique, Berlin, Montreal Opera Co.*  
**MASTER VOCAL TEACHER**

*Recently from Chicago*

Studied with JEAN DE RESZKE, LOMBARDI and others,

*Comments of a few of the many Artist Pupils:*

CHARLES DALMORES, Chicago Opera Star: "Burnetti is the greatest voice-builder of today."

OLGA KARGAU, Chicago Opera Co.: "I owe all to Burnetti, my teacher, the master moulder of voices."

DOROTHY STONE, star of *Three Cheers*: "All the fine qualities are brought out by this maestro."

**AUDITIONS BY APPOINTMENT**

After the Opera Season fortnightly recitals  
will be given by artists of Burnetti's Studio.

*Brochures of interest to voice student will be mailed upon request.*

2231 WASHINGTON ST., near Buchanan WEST 3264





MADAME VEUVE CLICQUOT 1777-1866  
*Founder of the champagne  
which still bears her name*

# Clicquot Yellow Label

*The Finer Champagne*

AGENTS  
THE JOS. GARNEAU CO., INC.  
NEW YORK SAN FRANCISCO

## VISIT . . .

The most beautiful  
cocktail lounge in  
San Francisco.

### CARDINAL RICHELIEU ROOM

Van Ness at Geary  
Just a Short Walk

● Try Our Special  
Course  
Luncheon.. 50c



THE PERFECT CHOICE  
FOR DINNER BEFORE  
THE OPERA \* COCKTAILS  
AFTER THE OPERA

THE  
REDWOOD ROOM  
THE CLIFT

## THE San Francisco Conservatory of Music

3435-45 Sacramento Street

WA Inut 3496-3497

Offers a thorough musical education.  
DAY AND EVENING LESSONS IN: piano,  
violin, cello, vocal, organ, sight sing-  
ing, ear training, musicianship, har-  
mony, counterpoint, form, ensemble.

●  
Normal Courses with Diploma  
Special Children's Classes

GUARANTOR GUILD MEMBERS + *continued*

W. F. Hanrahan  
 Mrs. L. W. Harris  
 Mrs. Russell P. Hastings  
 J. R. Hayden  
 Mr. and Mrs. Elystus Hayes  
 A. W. Hazen  
 Mrs. E. S. Heller  
 Mr. and Mrs. Walter D. Heller  
 Mrs. I. W. Hellman  
 L. W. Hills  
 Mr. and Mrs. Reuben W. Hills, Jr.  
 Harry H Hilp  
 Carl Hoffman  
 Osgood Hooker  
 Mrs. Herbert Hoover  
 George H. Hotaling  
 Miss Marian Huntington  
 Mrs. Joseph Hymen  
 Mrs. James Irvine  
 A. P. Jacobs  
 Dr. S. Nicholas Jacobs  
 Mrs. Frank L. Jeddiss  
 Andrieus A. Jones  
 Mrs. Ira Kahn  
 Samuel Kahn  
 Mr. and Mrs. George R. Keast  
 Mr. and Mrs. Bruce Kelham  
 Mr. and Mrs. Charles Kendrick  
 Percy L. King  
 Ralph W. Kinney  
 Josephine R. Kleinjung  
 Mrs. William E. Kleinsorge  
 Mr. and Mrs. Samuel Knight  
 Mr. and Mrs. Maurice H. Knox  
 Mrs. E. Heller Kohn  
 Marion H. Kohn  
 Mrs. Anton F. Korbel  
 Caroline Korbel  
 Mrs. Marcus S. Koshland

Frederick J. Koster  
 Dr. and Mrs. H. Kreutzmann  
 E. V. Krick  
 A. G. Lang  
 Mrs. James P. Langhorne  
 John G. Larson  
 Mrs. Charles G. Lathrop  
 William Leib  
 Mrs. Isabel Stein Leis  
 A. M. Lester  
 J. B. Levison  
 Charles G. Lewis  
 George W. Lewis  
 Mr. and Mrs. Philip N. Lilienthal  
 Mr. and Mrs. Samuel Lilienthal  
 Clarence R. Lindner  
 F. L. Lipman  
 Dr. and Mrs. Hans Lisser  
 James K. Lochead  
 Ethel P. Lombardi  
 Mrs. Stanford P. Lowengart  
 Mrs. A. J. Lowrey  
 Rearden T. Lyons  
 Mr. and Mrs. Errol MacBoyle  
 Jean A. MacCallum  
 Mrs. J. W. Mailliard, Jr.  
 A. C. Mattei  
 James W. McAlister  
 Mrs. Anna McCay  
 Mrs. Fannie C. McCreary  
 Mrs. Mark L. McDonald  
 Mr. and Mrs. Garret W. McEnerney  
 Mr. and Mrs. F. S. McGinnis  
 John A. McGregor  
 John D. McKee  
 Preston McKinney  
 Mr. and Mrs. F. W. McNear  
 Mrs. George P. McNear  
 Mrs. B. B. Meek

Mrs. R. P. Merillion  
 Gaetano Merola  
 H. C. Merritt, Jr.  
 Mrs. George H. C. Meyer  
 Viola S. Meyer  
 C. F. Michaels  
 Mrs. Stuart Middlemas  
 Mr. and Mrs. C. O. G. Miller  
 Mrs. Harry East Miller  
 Mr. and Mrs. Robert W. Miller  
 Mr. and Mrs. Maxwell C. Milton  
 Edward F. Moffatt  
 H. C. Moffitt  
 J. K. Moffitt  
 Kenneth Monteaagle  
 Louis F. Monteaagle  
 Paige Monteaagle  
 Mrs. Joseph Moore  
 Mrs. Leslie Miller Moore  
 Mrs. H. W. Morgan  
 Mrs. Doris F. Morley  
 Mrs. A. F. Morrison  
 Mrs. Juliet E. O. Munsell  
 Elvon Musick  
 Mr. and Mrs. Guido J. Musto  
 Laura Musto  
 Mrs. Marie Adam Musto  
 Ralph R. Nelson  
 Newton H. Neustadter  
 H. D. and A. H. Newhouse  
 Mrs. Gertrude W. Neylan  
 John Francis Neylan  
 Alexander Nobel  
 Mr. and Mrs. Charles G. Norris  
 Henry E. North  
 Clarence M. Oddie  
 Benjamin J. Older  
 Mrs. E. L. Oliver  
 (Continued on page 43)

# SHEET MUSIC

OPERA SCORES  
 LIBRETTOS  
 CHAMBER MUSIC

*The Best from the Catalogs  
 of All Publishers*

at

## GROBE MUSIC CO.

310 Sutter St. • San Francisco

EXbrook 0442



VIRGINIA MORGAN

*Concert Harpist*

For All Information Regarding  
 Engagements and Lessons Address

872 CHESTNUT STREET

SAN FRANCISCO

TUxedo 2738

Member of San Francisco Symphony  
 Member of Music Faculty Mills College

# Good Living in 3 Acts



This is the happiest solution devised for good living. A beautifully appointed suite... serviced by an attentive staff. Dining that is a revelation of the chef's art. A central location... your car garaged in the building. And all around you an atmosphere of genuine hospitality. We invite you to inquire for full details.

*Hotel*

## FAIRMONT

George D. Smith, *President*



### CALIFORNIA CHAMPAGNE

*of the Finest Quality*

WEST COAST VINTNERS, Inc.

605 SANSOME STREET ✓ SAN FRANCISCO

FRANK S. BRUCATO, *General Manager*

## THIS PROGRAM

*is a product of*

PISANI PRINTING  
& PUBLISHING CO.

700 MONTGOMERY STREET

GUARANTOR GUILD MEMBERS *continued*

Warren Olney, Jr.  
 Charles R. Page  
 Philip P. Paschel  
 Gertrude Pauson  
 Armando Pedrini  
 Mrs. Grattan D. Phillips  
 H. D. Pillsbury  
 Mr. and Mrs. G. Pisani  
 Mrs. Leo Pockwitz  
 Mrs. George A. Pope  
 Mrs. Ashton H. Potter  
 J. Sheldon Potter  
 Mr. and Mrs. Stanley Powell  
 Warren S. Quinn  
 Mrs. J. C. Raas  
 Jane D. Rawlings  
 Dr. A. G. Rawlins  
 A. S. Rees  
 Mrs. Mark L. Requa  
 Mrs. B. S. Revett  
 Ralph A. Reynolds  
 H. A. Richardson  
 George H. Roos  
 Robert A. Roos  
 Ralph S. Rose  
 Mrs. Charles W. Rosenbaum  
 Leland S. Rosener  
 Mrs. Angeline Wing Roth  
 Mr. and Mrs. W. P. Roth  
 Mr. and Mrs. Orla St. Clair  
 Mrs. M. J. Savage  
 Elizabeth Jane Saxe  
 A. E. Sbarboro  
 Remo E. Sbarboro  
 Else Schilling

Dr. Walter Schilling  
 Mrs. E. G. Schmiedell  
 Mrs. Max Schuckl  
 Mr. and Mrs. A. E. Schwabacher  
 Hannah M. Schwabacher  
 James H. Schwabacher  
 Mrs. Louis A. Schwabacher  
 Samuel I. Schwabacher  
 S. V. Seddon  
 R. H. Shainwald  
 R. S. Shainwald  
 F. R. Sherman  
 J. F. Shuman  
 Mrs. Edgar Sinton  
 Charles W. Slack  
 Mr. and Mrs. Joseph Sloss  
 Mrs. Leon Sloss  
 Mr. and Mrs. Leon Sloss, Jr.  
 Mrs. M. C. Sloss  
 Mrs. Edward Babson Stanwood  
 Mrs. Frances Stent  
 Mrs. Sigmund Stern  
 Dr. John Philip Strickler  
 Mr. and Mrs. Walter H. Sullivan  
 Mr. and Mrs. Alfred Sutro  
 Louis Sutter  
 Mrs. David Armstrong-Taylor  
 Mr. and Mrs. J. H. Threlkeld  
 Mr. and Mrs. M. C. Threlkeld  
 William Timson  
 Mrs. C. R. Tobin  
 R. M. Tobin  
 Mr. and Mrs. Ernest J. Torregano  
 John A. Traina  
 Mrs. Alfred S. Tubbs

Tallant Tubbs  
 Mr. and Mrs. Nion R. Tucker  
 Mrs. Daniel Volkmann  
 Miss Johanna Volkmann  
 Mrs. Wm. G. Volkmann  
 Gustave A. Vouëte  
 Mrs. Richard Walker  
 Mrs. C. R. Walter  
 Mrs. John I. Walter  
 Whitney Warren, Jr.  
 Mrs. W. O. Wayman  
 R. W. Weber  
 A. L. Weil  
 M. D. Weill  
 Mrs. Charles S. Wheeler  
 Mr. and Mrs. L. C. Whitaker  
 Mr. and Mrs. Osborne White  
 Randolph V. Whiting  
 Mrs. Eli H. Wiel  
 Robert L. Wiel  
 Arthur Wilhoit  
 George Wagner  
 H. M. Walker  
 Richard D. Willett  
 Mrs. Selden Williams  
 Mr. and Mrs. Randolph C. Walker  
 Stephen Williams  
 H. R. Williar  
 Mr. and Mrs. Leonard E. Wood  
 Mrs. Clinton E. Worden  
 Harold L. Wright  
 Alex Young, Jr.  
 F. A. Zane  
 Eleonora K. Zaruba  
 Mr. and Mrs. J. D. Zellerbach

Associate Guarantors

Thomas Buck  
 Estelle Carpenter  
 Mrs. Jesse C. Colman  
 Mrs. Charles N. Felton  
 Daniel E. Koshland

Dorothy F. Lilienthal  
 Mrs. Alfred McLaughlin  
 Miss Henrietta Moffat  
 Miss Esther B. Phillips  
 H. H. Scales

Mrs. Louis Sloss  
 Benka Strickler  
 John Strickler III

(Continued on page 45)



Copyright 1937 by Shasta Water Co.

**Shasta Water - After A Cocktail - sometimes  
 but - In a Highball - always**

Product of Shasta Springs at Mt. Shasta · Look for the label

# MUSICAL DIRECTORY

## The DOMINICAN CONSERVATORY of MUSIC

*A Cultural Centre of the West . . . for*

RESIDENT and NON-RESIDENT STUDENTS

Degrees Conferred ✓ Teachers' Training Courses ✓ California State Credentials

Information: THE REGISTRAR

THE DOMINICAN COLLEGE ✓ SAN RAFAEL, CALIFORNIA

## WILLEM WEGMAN

First Violinist, San Francisco Symphony Orchestra; Member of San Francisco Opera Orchestra

TEACHER of VIOLIN

Studios at Castenada (Forrest Hill)

878 THIRTY-SIXTH AVENUE  
Phone BA yview 5223



## CATHERINE B. SWINT

Teacher of Piano

*Specializing in Child Instruction*

3368 Jackson Street  
San Francisco

## RENA LAZELLE

VOCAL TEACHER AND COACH

of the

SAN FRANCISCO CONSERVATORY OF MUSIC

*Announces an*

### OPERA CLASS

with ANDRE FERRIER as Stage Director. The course includes voice training, languages, musicianship, acting, practical experience in roles. In preparation:

*Aida, Faust, Don Pasquale*

PHONE WALNUT 3307

## MAUDE REDMON TORREY

SOPRANO

TEACHER OF VOICE

OPERA ✓ CONCERT ✓ RADIO

Recently of New York City. Associate Teacher of Frantz Proschowski for ten years. Coaches, Edwin McArthur and Frank La Forge. Available for concert engagements.

Hotel Fairmont Studios

Fridays and Saturdays

823 POWELL STREET ✓ DOUGLAS 8800

AUDITIONS WITHOUT CHARGE

## MME. BEATRICE BOWMAN

Teacher of ALICE AVAKIAN, Mezzo Soprano, who makes her debut in *Elektra*.

New Studio:  
801 CALIFORNIA ST.

Tel. EX brook 3263

## JOSEPH GREVEN

*Voice Specialist*

Teacher of Many Prominent European and American Singers

927 Lake Street

BA yview 5278

## MME. JOHANNA KRISTOFFY

PRIMA DONNA SOPRANO

Through Vocal and Dramatic Training

740 Pine Street

Tel. EX brook 4366

## MAESTRO AUGUSTO SERANTONI

PIANO TEACHER AND COACH

1924 Fillmore Street

Tel. Fillmore 8534

## CITY TRANSFER CO.

SERVES SAN FRANCISCO OPERA CO.

WHY NOT YOU?

*Moving — Storage — Shipping*

162 Turk Street

Tel. PR ospect 3060

## HANCOCK BROS.

*Roll and Reserved Seat Tickets*

25 Jessie Street

Tel. DO uglas 2191

San Francisco, California

## Guarantor Members Organizations

Baldwin Piano Company  
Edward Barry Company  
Blum's  
Bordens Dairy Delivery  
Bullock & Jones Co.  
City Transfer Company  
Clift Hotel  
Columbia Concerts Corporation  
Davis-Schonwasser Co.  
Don Lee, Inc., Fred Pabst, Mgr.  
The Emporium  
Fairmont Hotel  
Nelly Gaffney

Geneve's  
Hancock Bros.  
Hastings Clothing Co.-Kean, Ltd.  
H. Liebes & Co.  
Livingston Bros.  
Lovina Hund, Inc.  
I. Magnin & Co.  
Maison Marie  
Mark Hopkins Hotel  
Evelyn Mendessolle  
Munson School  
Musicians Union  
National Broadcasting Co., Inc.

The Oakland Forum  
O'Connor, Moffatt & Co.  
Pacific Coast Paper Co.  
Pisani Printing & Publishing Co.  
Podesta & Baldocchi  
Ransohoff's  
Roos Bros.  
St. Francis Hotel  
Simon Bros.  
Sommer & Kaufmann  
Sir Francis Drake Hotel  
May G. Walsh  
Yellow Cab Co.

## GUILD MEMBERS

### Officers

MRS. STANLEY POWELL, *Chairman*  
MRS. EDWARD OTIS BARTLETT, *Vice-Chairman*  
MRS. HENRY POTTER RUSSELL, *Vice-Chairman*  
MILTON ESBERG, JR., *Secretary*  
JERD SULLIVAN, *Treasurer*

## Board of Directors

Mrs. George W. Baker, Jr.  
Albert Bender  
Mrs. James Black  
H. Sewall Bradley  
Jack Bradlev  
Barbara Burke  
Mrs. George T. Cameron  
Mrs. Horace Clifton  
Templeton Crocker  
Mrs. Marie Hicks Davidson  
Mrs. Sydnev Ehrman  
Mrs. William Fitzhugh  
Mortimer Fleishhacker, Jr.  
Lutie D. Goldstein

Jane Goodfellow  
Mrs. Lawrence W. Harris  
Mrs. I. W. Hellman  
Mrs. E. S. Heller  
Mrs. Wellington Henderson  
Mrs. Thomas Carr Howe, Jr.  
Mrs. Marcus S. Koshland  
Bruce Kelham  
Mrs. Isabel Stine Leis  
Edith Livermore  
Mrs. Robert W. Miller  
George Montgomery  
Kenneth Monteagle  
Jane Neylan  
Mrs. Selby Oppenheimer

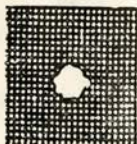
Mrs. M. C. Porter  
Mrs. Ashton H. Potter  
Mrs. E. G. Schmiedell  
Mrs. M. C. Sloss  
Mrs. Edward B. Stanwood  
R. D. Stephens III  
Mrs. Sigmund Stern  
Mrs. Jerd Sullivan  
Mrs. David Armstrong-Taylor  
Mrs. Richard Tobin  
Mrs. Nion R. Tucker  
Richard C. Walker  
Mrs. Richard C. Walker  
Whitney Warren, Jr.

## Membership Committee

Jane Neylan, *Chairman*  
Marjorie Blyth  
Jane Goodfellow

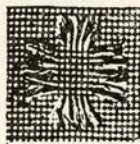
Mrs. John Lockwood Bradley  
Mrs. Thomas Carr Howe, Jr.  
Charlotte Johnson

Mrs. Robert Kirkwood, Jr.  
Mrs. Richard C. Walker  
*(Continued on page 47)*



DAMAGE

Torn, Burned and Moth-Eaten  
Clothes Reweaved **Invisibly** by  
*Artistes Stoppeurs of Paris*



2ND WEAVE

# FRENCH WEAVING & MENDING CO.

57 GOLDEN GATE AVE. • SAN FRANCISCO • Phone HEMLOCK 0336





by MARCUS L. SAMUELS

# GRAND OPERA and the LAW

THE AUDIENCE is seated, packing the Opera House to every available space; and, for good measure, the standees at the back of each floor run five deep.

The lights are dimmed. Maestro Gaetano Merola takes his place amidst a fanfare of well earned, well deserved applause. He bows, then turns, taps his baton for attention, and the orchestra, to a man, galvanizes into a perfect musical instrument. The curtain goes up and—what would happen to Beniamino Gigli, Elisabeth Rethberg, Lina Kroph, Richard Bonelli, or John Howell, and the others, if the story were enacted in true life in our wonderful state of California?

The opera is "Andrea Chenier." The second act brings forth a duel between Gigli and Bonelli. In California this would earn for them one year in prison, besides not being allowed to hold any office of profit; nor would they be allowed to enjoy the right of suffrage. This would also apply to the others who may have aided and assisted these two duelists. And, should Bonelli die within one year as a result of his wound, Gigli might draw incarceration for seven years.

If the opera were "Don Giovanni," in two acts and ten scenes, we would start immediately by putting to death Ezio Pinza, the Don Juan of the opera, for murdering Norman Cordon, the commandant who seeks to protect his daughter, sung by Elisabeth Rethberg. As a result of the story

told by Pinza's servant, sung by Salvatore Baccaioni, Dino Borgioli, Elisabeth Rethberg's fiancee, debonair Pinza would no

doubt get the limit under the contributing statutes, which carry a penalty up to life imprisonment.

And as for "Elektra," we would start out by using the newly adopted lethal gas chamber instead of hanging Kerstin Thorborg and Karl Laufkoetter, the contralto and tenor respectively, for having murdered the king. In addition, if such might be conceivable, Madam Thorborg might pay a fine of five hundred dollars and go to jail for one year for abandoning Julius Huehn, her operatic son.

For abusing her daughters, Rose Pauly and Irene Jessner, operatically speaking, Madam Thorborg would draw an additional number of six-month jail sentences. While in the end, Julius Huehn would suffer the penalty for murder, and Mary Helen Markham, Doris Doe, Lina Kroph, Alice Avakian, Thelma Votipka, and Alma Michelini, would take at least several six-month periods to think things over for the share they had in the proceedings.

Armando Agnini would receive duplicate awards of chastisement, as meted out to each member of the cast. It must be remembered that he is the master mind of stage management behind the scenes.

But, fortunately for all . . . the curtain falls . . . to rise again, and again, in respon to the tremendous applause . . . the play is ended!

## Members

- |                                |                              |                            |
|--------------------------------|------------------------------|----------------------------|
| Mrs. Douglas Alexander         | Mrs. Ernest Hueter           | Mrs. George A. Pope, Jr.   |
| Lorraine Ames                  | Mrs. Richard Hyde            | Mrs. M. C. Porter          |
| E. Raymond Armsby              | Mrs. Clarence Loran Johnston | Mrs. Clarence S. Postley   |
| Mrs. Louis Benoist             | Mrs. Sydney Joseph           | Margery Powell             |
| Mrs. Whitney Bentley           | Joseph's                     | Stanley Powell, Jr.        |
| Mrs. Nat Berger                | Mrs. Walker Kamm             | Cecily Ray                 |
| Marjorie Blyth                 | Mrs. Easton Kent             | Virginia Ray               |
| Mary Bowles                    | Dale King                    | Mrs. James W. Reid         |
| Mrs. Philip E. Bowles, Jr.     | Frances H. King              | Mrs. Lloyd R. Reynolds     |
| John N. Breeden                | Mrs. Robert Kirkwood         | Marjorie Reynolds          |
| Mrs. Emil Brisacher            | Mrs. Robert C. Kirkwood, Jr. | Sally Rodgers              |
| Mrs. Edw. Rankin Brown         | Mrs. Fentress Kuhn           | Mrs. Wm. Lister Rogers     |
| Hillyer Brown                  | Mrs. John B. Knox            | Mrs. Leon Roos             |
| Mrs. Frank Buck                | Mrs. Philip Van H. Lansdale  | Mrs. Bert C. Scott         |
| Mrs. R. P. Bullard             | Lewis Lapham                 | Nancy Scott                |
| Mrs. Emerson Butterworth       | Frances Marie Lilienthal     | Eda Sherman                |
| Mrs. Arthur B. Cahill          | Mrs. Clarence Lindner        | Mrs. Fred R. Sherman       |
| Mrs. Carol G. Cambron          | Edith Livermore              | Barbara Shields            |
| Mrs. Henry Cartan              | Mrs. John Logan              | Mrs. Herbert Shirek        |
| Dr. Margaret Chung             | Mrs. Samuel Lowe             | Nancy Short                |
| Mrs. Barnaby Conrad            | Mrs. Edmunds Lyman           | Mrs. Frank Shuman          |
| Mrs. Marie Hicks Davidson      | Genevieve Lyman              | Mrs. Blanche Simon         |
| Mrs. Edith De Lee              | Mrs. Douglas McBryde         | May Sinsheimer             |
| Helen M. de Limur              | Mrs. V. S. McClatchy         | Mrs. Silas Sinton          |
| Harry de Wit                   | Mrs. Harold R. McKinnon      | Genevieve Six              |
| Mrs. Russell M. Dickson        | Graeme MacDonald             | Betty Slade                |
| Mrs. Frank J. Edoff            | Suzanne MacDonald            | Mrs. Frank Sloss           |
| Mrs. Herbert Fleishhacker, Jr. | Mrs. Marshall P. Madison     | Mrs. Richard Sloss         |
| Mrs. James Flood, Jr.          | Mrs. John Magee              | Mrs. Melville Smith        |
| Mrs. Peter Folger              | Edward J. Maher              | Nicol Smith                |
| Mrs. Lawrence Ford             | Walter Main                  | Dr. Wallace Smith          |
| Mrs. Charles . Foster          | Martha Marsden               | Mrs. Harley Stevens        |
| Mrs. W. P. Fuller III          | J. Howard Marshall           | Mrs. Butler Sturtevant     |
| Mrs. John O. Gantner           | Marie Merle                  | Mrs. Jerd Sullivan         |
| Mrs. Frank Gerbode             | Mrs. E. G. Meyer             | Barbara Sutro              |
| Mrs. Arthur Goodfellow         | Katharine Meyer              | Oscar Sutro                |
| Mrs. J. D. Goodfellow          | Mrs. John Millen             | Jane Swinerton             |
| Jane Goodfellow                | Diantha C. Miller            | Mrs. Augustus Taylor, Jr.  |
| Mrs. Robert L. Goldman         | George Montgomery            | Lady Tennyson              |
| Mrs. Joseph Grace              | Mrs. Walton N. Moore         | Mrs. George Thierbach      |
| Mrs. Horace Gray               | Mrs. Howard C. Naffziger     | Mrs. Arthur Towne          |
| Rhoda Haas                     | Mrs. Louis Newman            | Nan Tucker                 |
| Mrs. Williamson Hale           | Jane Frances Neylan          | Ruth A. Turner             |
| Mrs. Richard Ham               | Mrs. Wm. Noble               | Jane Volkmann              |
| Maurice E. Harrison            | Mrs. Jack Oakle              | Mrs. William Volkmann, Jr. |
| Mrs. Richard Heimann           | Mrs. A. Leslie Oliver        | William Wallace            |
| Mrs. Wellington S. Henderson   | Mrs. Selby Oppenheimer       | Mary E. Warren             |
| Mrs. Wm. T. Hess, Jr.          | Mrs. William Orrick          | Mrs. C. M. Weatherwax      |
| Mrs. Harry Hill                | Mrs. Charles Page, Jr.       | Mrs. Alanson Weeks         |
| Mrs. Charles Howard, Jr.       | Barbara Parrott              | Jane Williams              |
| Dr. L. D. Howard               | Dr. J. James Pfister         | Florence Wright            |
| Wm. H. Howard                  | Mrs. Herman Phleger          |                            |
| Mrs. Thomas Carr Howe, Jr.     | Peter Pike                   |                            |

# WAR MEMORIAL *Souvenir*

AND *Story* OF THE

SAN FRANCISCO OPERA COMPANY

For Sale *in the Foyer* . . . Price 50c

# Kajetan Attl



## KAJETAN ATTL'S HARP ENSEMBLE

First Harpist with San Francisco Symphony for twenty-six consecutive years. (Beginners or advance students phone for appointment. (When buying or renting a harp only an experienced harpist can advise correctly.

1030 BUSH STREET  
STUDIO No. 6

PHONE OR DWAY 6367 SAN FRANCISCO

*Large Stock of Harps for Sale or Rent*





## TALK ABOUT TRUSTS

**A:** I hear R. . . 's widow lost some of her money when her brother's company failed.

**B:** Well, the brother had a good idea, but he didn't have the experience or capital to put it over. She couldn't very well refuse him though . . . Anyway, that's one thing can't happen to my family.

**A:** What do you mean . . . it can't happen to your family? Got your money tied up?

**B:** No . . . not tied up at all. It's in trust . . . what the

bank calls a Family Trust.

### WHAT IS A FAMILY TRUST?

Simply a way to give tangible form to your financial plans for the benefit of the family. The Trust becomes an efficient and economical adjunct to your Will. It is not expensive.

An explanatory booklet covering the details of the Family Trust is available on request . . . write, telephone, or call for a copy.

TRUST DEPARTMENT

**Wells Fargo Bank**  
and  
**Union Trust Co.**

SAN FRANCISCO

*Established 1852*

*From*

DEL MONTE  
*to* THE RITZ



KORBEL SEC  
*California*  
CHAMPAGNE

---

PRODUCED BY

F. KORBEL & BROS.

SONOMA COUNTY

CALIFORNIA

---

---

*Important Notice . . .*

Opera Tickets  
are on sale at

**KOHLER & CHASE**

20 O'FARRELL STREET  
Telephone EXbrook 6696

and

**OPERA HOUSE**

**BOX OFFICE IN MAIN LOBBY**

9 A. M. TO 5:30 P. M.

Telephone UNderhill 6961

- Seats are available for **all performances** except "Pelleas et Melisande" and "Le Coq d'Or."
- 
-

Important Notice...

Opera Tickets  
are on sale at

KOHLER & CHASE

30 O'APPELL STREET  
Telephone EX 2001 0090

and

OPERA HOUSE

BOX OFFICE IN MAIN LOBBY

9 A.M. TO 5 P.M.  
Telephone UN 1011 0901

Seats are available for all performances except "Pallas  
et Athènes" and "Le Comte O.".

Saturday Night, October 15, at 8:00

# ANDREA CHENIER

- . . . . . An opera in four acts.
- Music by Umberto Giordano.  
Text (in Italian) by Luigi Illica

## *The Cast*

Andrea Chenier, a poet of the French Revolution . . . . .	BENIAMINO GIGLI
Madeleine, daughter of the Countess de Coigny . . . . .	ELISABETH RETHBERG
Countess de Coigny . . . . .	DORIS DOE
Bersi, Madeleine's maid . . . . .	LINA KROPH
Gerard, footman at the Chateau, later a Revolutionist . . . . .	†CARLO TAGLIABUE
Major-domo at the Chateau . . . . .	MAX LORENZINI
Fleville, a novelist pensioner of the King . . . . .	JOHN HOWELL
The Abbe . . . . .	LUDOVICO OLIVIERO
A Spy for the Revolutionists . . . . .	LUDOVICO OLIVIERO
Roucher, Chenier's friend . . . . .	GEORGE CEHANOVSKY
Madelon, a blind woman . . . . .	DORIS DOE
Mathieu, a revolutionist . . . . .	LOUIS D'ANGELO
Fouquier-Tinville, public prosecutor . . . . .	ARNOLD GABOR
Dumas, President of the Revolutionary Tribunal . . . . .	NORMAN CORDON
Schmidt, jailer at St. Lazare . . . . .	ARNOLD GABOR
Roger Albert, a boy . . . . .	ZELDA NERINA

†American Début.

*Beggars, Fishwives, Sanculots, Gendarmes, Servants, etc.*

Incidental Dances by Corps de Ballet

<i>Stage Director</i>	<i>Conductor</i>	<i>Chorus Master</i>
ARMANDO AGNINI	GAETANO MEROLA	WILLIAM TYROLER

## *Time and Place*

The French Revolution; Paris.  
ACT I: Ballroom of Chateau de Coigny.  
ACT II: Café Hottot in Paris.  
ACT III: Revolutionary Tribunal and  
Prison of St. Lazare.  
ACT IV: Same as Act III—At Dawn.

Bell rings three minutes before curtain rises • Encores not permitted

Seats for All Performances at Kohler & Chase and Opera House Box Office