

Andrea Chénier

1923

Thursday, September 27, 1923 8:00 PM

SFO\_PUB\_01\_SFO\_1923\_01

Publications Collection

San Francisco Opera Archives

# San Francisco Grand Opera

FIRST SEASON

Exposition Auditorium

San Francisco, Calif.

September 26<sup>th</sup> to October 8<sup>th</sup>

1923

*Business Management*

SELBY C. OPPENHEIMER



GAETANO MEROLA

*Director*

*Publishers of Official Program*

SCHWABACHER-FREY STATIONERY CO.



*The Piano of the Discriminating and  
of the Connoisseur—*

# Mason & Hamlin

Of all the beautiful pianos of the world, none so perfectly meets the ideals or the exacting requirements of the truly cultured musician and the concert artist as does the MASON & HAMLIN.

Among those who know and appreciate master craftsmanship and the true artistry of the piano, its position is absolutely unassailable.

COSTLIEST IN THE WORLD

**Wiley B. Allen Co.**  
Mason & Hamlin Pianos

135 Kearny Street

OAKLAND: 1223 Washington Street



# KAJETAN ATTL

*Solo Harpist*  
*San Francisco Symphony*  
*Orchestra*

FOR ENGAGEMENTS AS SOLO ARTIST, ACCOMPANIST, OR  
PLAYER IN ENSEMBLE MUSIC, ADDRESS  
KAJETAN ATTL, BOHEMIAN CLUB, SAN FRANCISCO, CALIFORNIA

REPRESENTATIVE OF

## LYON & HEALY HARPS

*The World's Standard*



*A Letter from*

# GIGLI

GREAT TENOR

*of the*

Metropolitan Opera House

*to*

*Hardman, Peck & Co.*

HARDMAN, PECK & COMPANY,  
New York.

Dear Sirs:

Since my arrival in America I have used the Hardman Piano. It has pleased me very much. I find it the ideal piano for the artist and for the home.

The piano which I have had in my apartment has received very hard use, and I marvel at the length of time it remains true to pitch. It is the most satisfactory piano I have ever used, and I am glad to tell you of the pleasure it has afforded me for the past two years and also to know that you will furnish one of your beautiful Concert Grands for my coming tour.

Yours cordially,

New York, March 12, 1923

*The Hardman is the Official Piano of the Metropolitan Opera*

DURABILITY



THE KEYSTONE OF  
*Hardman*  
SUCCESS

## *Hardman, Peck & Co.*

433 Fifth Avenue • New York

OVER EIGHTY YEARS OF FINE PIANO MAKING

F I R S T   S E A S O N

# San Francisco Grand Opera

GAETANO MEROLA, *Director*  
SELBY C. OPPENHEIMER, *Manager*

EXPOSITION AUDITORIUM  
SAN FRANCISCO

September 26 to October 8, 1923

**ARTISTIC DIRECTION**

GAETANO MEROLA, *Director*

Assistant Conductors .....	{	GIACOMO SPADONI
		WILFRED PELLETIER
		ARTURO CASIGLIA
Stage Director .....		ARMANDO AGNINI
Technical Director .....		RAY COYLE
Assistant Stage Manager .....		NATALE CAROSSIO
Stage Carpenter .....		L. G. SCHROEDER
Property Master .....		CHARLES JACKSON
Chief Electrician .....		CHARLES HOLZMULLER
Scenic Artist .....		RALPH NIEBLAS
Wardrobe } .....		GOLDSTEIN & COMPANY
Wigs }		
Manager of Orchestra .....		WALTER OESTERREICHER
Concert Master .....		PIETRO MARINO
Librarian .....		OTTO KEGEL

**BUSINESS DIRECTION**

SELBY C. OPPENHEIMER, *Manager*

Director of Publicity .....	HOWARD G. HANVEY
Treasurer .....	EDWARD F. MOFFATT
Director of Ticket Sales .....	WILLIAM J. RILEY
Assistant Treasurers .....	{
	THOR RAYWOOD
	PETER D. CONLEY
	SELBY C. OPPENHEIMER, JR.
Auditors .....	KLINK, BEAN & COMPANY
Chief of Service .....	JULIAN BENAS

(Continued)



## Madame E. Tromboni

VOICE PRODUCTION

*According to the most modern ideas*

Studio: 601 Kohler & Chase Bldg.

Telephone Kearny 5454



MATZENAUER

# ELWYN CONCERT BUREAU



JASCHA HEIFETZ

PRESENTS THE

# Elwyn Artist Series

## CURRAN THEATRE

### *The World's Great Artists at Popular Prices*

#### MARGARET MATZENAUER

Sunday Matinee, October 14

Prima Donna Contralto—Metropolitan Opera Company. An internationally famous artist, pre-eminent in recital as in operas, and

#### CLARENCE WHITEHILL

Sunday Matinee, October 14

Baritone Metropolitan Opera Company. One of the most famous of all American singers. These two great stars from the Metropolitan will appear in *joint recital* as the opening attraction and their program will include arias and duets from Wagner. Mme. Matzenauer and Mr. Whitehill are two of the greatest interpreters of Wagnerian Opera at the Metropolitan Opera House.

#### BENNO MOISEVITSCH

Friday Matinee, November 9

Pianist. The success of Moisevitsch as soloist with the Symphony, with the Chamber Music Society, and in recital establishes him as a favorite with the San Francisco public.

#### THE IMPRESARIO

DER SCHAUSPIEL, Director  
Friday Matinee, November 23

William Wade Hinshaw's production of Mozart's Opera Comique from the English version of the late Henry E. Krehbiel. All-Star cast headed by Percy Hemus, the eminent American Actor singer. A complete production.

#### QUARTET OF VICTOR ARTISTS

Friday Matinee, December 7

Olive Kline, soprano; Elsie Baker, contralto; Lambert Murphy, tenor; Royal Dadmun, baritone. This splendid organization in a program of Soloists-Duets-Trios-Quartets, repeating the triumphs its individual members have won in concert.

#### JASCHA HEIFETZ

Friday Matinee, January 18

Violinist. A master whose fame needs no comment.

#### COSI FAN TUTTE

"THE SCHOOL FOR LOVERS"

Friday Matinee, February 1

A production in English of Mozart's most delightful opera comique with all-star cast, including Irene Williams, Judson House, Ellen Rumsey, Lillian Palmer, Pierre Remington, Leo de Hieropolis, with Elliott Schenk as musical director.

#### MORIZ ROSENTHAL

Friday Matinee, February 15

Pianist. The name Moriz Rosenthal conveys to the most discerning music minds a picture of a pianistic giant accomplishing the superlative.

#### MARIA IVOGUN

Friday Matinee, February 29

Coloratura Soprano. Europe's foremost coloratura soprano, who possesses one of the loveliest voices of the day. Miss Ivogun has already established herself as a recitalist of rare charm.

#### MARIO CHAMLEE

Friday Matinee, March 14

Tenor Metropolitan Opera Company. "A dominating figure among the world's great singers. In quality his voice resembles more closely the Caruso voice than any other I have ever heard." —Pitts Sanborn, *New York Globe*.

#### REINALD WERRENRATH

Friday Matinee, March 28

Baritone. America's foremost concert baritone. "An American institution" and a great one!



MORIZ ROSENTHAL

### CONSIDER THE MUSICAL VALUE OF THIS LIST AND NOTE THE POPULAR PRICES

These Concerts, with the exception of the first, are Friday Matinees alternating with the Symphony Orchestra in the use of the Curran Theatre.



REINALD WERRENRATH

Season Tickets now on sale, Sherman, Clay & Co. Prices (10 Concerts), Lower Floor \$18.00, Balcony (7 rows) \$15.00, Balcony (5 rows) \$12.00, Gallery \$10.00, \$8.00 (tax extra)

Make Reservations Now

*San Francisco Needs*  
A HOME FOR IT'S OPERA

*You Need*  
A RELIABLE INSURANCE BROKER  
**MAURICE A. GALE**

Douglas 7050-7051

ESTABLISHED 1908  
*Advice Freely Given*

*New Address*  
38 Sansome Street

**ACKNOWLEDGMENTS**

Costumes by Goldstein & Company, San Francisco.  
Scenery by Western Scenic Studios, L. A. Abbott, Proprietor.  
Special acknowledgment is made for courtesies extended by Joseph Basch Company, Falvy & Fricke, City of Paris Dry Goods Company, Paul Curtis, and assistance given by Miss Christine Donohoe.  
Electrical effects by Charles Holzmuller.  
Official Photographer—Hartsook.  
The STEINWAY is the official piano. Steinway Pianos furnished by courtesy of Sherman, Clay & Company, San Francisco.  
Stage arrangements executed by Plummer & Company.  
Seating arrangements executed by Ralph McLeren & Co.  
Program Publishers, Schwabacher-Frey Stationery Co.

THE CITY OF SAN FRANCISCO

*presents the*

**San Francisco Symphony Orchestra**

ALFRED HERTZ, *Conductor*

*in a series of*

**FIVE POPULAR CONCERTS**

*Exposition Auditorium*

WEDNESDAY EVENING, OCTOBER 31

TUESDAY EVENING, DECEMBER 11

TUESDAY EVENING, JANUARY 15

TUESDAY EVENING, FEBRUARY 5

TUESDAY EVENING, MARCH 11

*World-famous Soloist at Each Concert*

Season Tickets (5 Concerts) \$4.00, \$3.00, \$2.00, \$1.00

Now on Sale at SHERMAN, CLAY & CO.

*Direction* J. EMMET HAYDEN, Chairman Auditorium Committee





OUR CENTRALLY-LOCATED GROUND-FLOOR OFFICE is maintained for the convenience of Investors. Our advisory services are always at your disposal.

When down town, step in our office and get the latest information concerning the securities you hold.

Inquiries entail no obligation, and you are assured prompt, courteous service.

**Schwabacher**  
*Investment*  
*Securities* & Co  
PALACE HOTEL BUILDING  
665 MARKET ST. DOUGLAS 500  
*San Francisco*

OFFICERS OF THE SAN FRANCISCO  
OPERA ASSOCIATION FOR 1923

TIMOTHY HEALY ..... Chairman  
 A. W. WIDENHAM }  
 HORACE B. CLIFTON } ..... Vice-Chairmen  
 MRS. JAMES B. MILLER ..... Secretary  
 EDWARD F. MOFFATT ..... Treasurer

EXECUTIVE COMMITTEE

Albert M. Bender  
 Robert I. Bentley  
 Miss Louise Boyd  
 Charles A. Christin  
 Mrs. Horace B. Clifton  
 George E. Crothers  
 Miss Mary Dunham  
 Milton H. Esberg  
 Charles K. Field  
 Mrs. William M. Fitzhugh  
 Mrs. Timothy Healy  
 Mrs. Marcus Koshland  
 Miss Edith Livermore  
 Miss Sallie Maynard  
 Gaetano Merola  
 Mrs. W. H. Mills  
 Selby C. Oppenheimer  
 Mrs. M. C. Porter  
 B. F. Schlesinger  
 Mrs. William Sesnon  
 Mrs. Ernest Simpson  
 Mrs. M. C. Sloss  
 Mrs. O. C. Stine

SPONSORS OF THE  
SAN FRANCISCO GRAND OPERA

Wallace M. Alexander  
 Frank B. Anderson  
 Albert M. Bender  
 Robert I. Bentley  
 Eugene B. Braden  
 Frederick W. Bradley  
 J. Brenden Brady  
 Selah Chamberlain  
 George E. Crothers  
 Frederick W. Dohrmann, Jr.  
 John S. Drum  
 The Emporium  
 Milton H. Esberg  
 Charles W. Fay  
 William M. Fitzhugh  
 Mrs. William M. Fitzhugh  
 Herbert Fleishhacker  
 Mortimer Fleishhacker  
 William Fries  
 A. P. Giannini  
 Sanford L. Goldstein  
 Joseph D. Grant  
 Hale Bros.  
 R. J. Hanna  
 E. S. Heller  
 William Kaufmann  
 Mrs. Marcus Koshland  
 Frank D. Madison  
 Walter S. Martin  
 Charles C. Moore  
 O'Connor Moffatt & Co.  
 James D. Phelan  
 Joseph C. Raas  
 William P. Roth  
 A. Schilling  
 B. F. Schlesinger  
 William T. Sesnon  
 Charles W. Steines  
 Sigmund Stern  
 Mrs. Oliver C. Stine  
 M. J. Sullivan  
 George A. Volkmann  
 Raphael Weil & Co.  
 I. Zellerbach

H O T E L  
*St. FRANCIS*

SUPPER

Fable Room after the  
Opera



DANCING

HENRY HALSTEAD  
Dance Orchestra



UNION SQUARE, SAN FRANCISCO

THOS. J. COLEMAN  
MANAGER

## TWO FAMOUS SAN FRANCISCO HOTELS



*On the top of  
Nob Hill  
overlooking  
San Francisco  
and the  
Bay District*

**FAIRMONT**  
**HOTEL COMPANY**  
D.M. LINNARD, LEROY LINNARD  
PRESIDENT MANAGER

**T**HE social functions of San Francisco, in a great measure, center in these two great hotels, and notables from every land and the heads of large business interests in other cities find in them conveniences befitting their requirements.

*At the new  
business center,  
Eighth and Market  
streets.  
Hotel Whitcomb  
with proposed  
addition*



**HOTEL**  
**WHITCOMB**  
D.M. Linnard Lessee Ernest Drury Manager

# D A T E S   A N D   O P E R A S

(Subject to necessary changes)

WEDNESDAY, SEPTEMBER 26TH . . . . . 8:00 P. M.

LA BOHEME (*Puccini*)  
Martinelli, Gandolfi, Didur, D'Angelo,  
Ananian, Mario, Young.

THURSDAY, SEPTEMBER 27TH . . . . . 8:00 P. M.

ANDREA CHENIER (*Giordano*)  
Gigli, De Luca, Didur, Paltrinieri, D'An-  
gelo, Ananian, Saroya, Fernanda, John-  
stone, Lazelle.

SATURDAY, SEPTEMBER 29TH . . . . . 2:00 P. M.

Puccini's Three New Operas  
IL TABARRO  
SUOR ANGELICA    GIANNI SCHICCHI  
Tokatyan, De Luca, Didur, Paltrinieri,  
D'Angelo, Ananian, Saroya, Fernanda,  
Epton, Lazelle, Young.

SATURDAY, SEPTEMBER 29TH . . . . . 8:00 P. M.

LA BOHEME (*Puccini*)  
Martinelli, Gandolfi, Didur, D'Angelo,  
Ananian, Mario, Young.

MONDAY, OCTOBER 1ST . . . . . 8:00 P. M.

MEFISTOFELE (*Boito*)  
Gigli, Didur, Paltrinieri, Saroya, Fernan-  
da, Johnstone.

TUESDAY, OCTOBER 2ND . . . . . 8:00 P. M.

TOSCA (*Puccini*)  
Martinelli, De Luca, D'Angelo, Pal-  
trinieri, Ananian, Saroya, Johnstone.

THURSDAY, OCTOBER 4TH . . . . . 8:00 P. M.

ROMEO AND JULIET (*Gounod*)  
(In French)  
Gigli, De Luca, Didur, D'Angelo, Anan-  
ian, Paltrinieri, Mario, Fernanda, John-  
stone.

SATURDAY, OCTOBER 6TH . . . . . 2:00 P. M.

GIANNI SCHICCHI (*Puccini*)  
Tokatyan, De Luca, Paltrinieri, Ananian,  
D'Angelo, Epton, Fernanda.  
*and*  
I'PAGLIACCI (*Leoncavallo*)  
Martinelli, De Luca, Gandolfi, Paltrinieri,  
Mario.

SATURDAY, OCTOBER 6TH . . . . . 8:00 P. M.

MEFISTOFELE (*Boito*)  
Gigli, Didur, Paltrinieri, Saroya, Fernan-  
da, Johnstone.

MONDAY, OCTOBER 8TH . . . . . 8:00 P. M.

RIGOLETTO (*Verdi*)  
Gigli, De Luca, Didur, D'Angelo, Anan-  
ian, Paltrinieri, Mario, Fernanda.

## *Shreve and Company*

ESTABLISHED 1852

JEWELERS AND SILVERSMITHS

QUALITY  
SERVICE  
CONSISTENT PRICES  
DISTINCTION  
PRESTIGE

Post Street and Grant Avenue  
San Francisco

**Selby C. Oppenheimer Attractions  
1923-1924**

**Special Attractions**

**MARY GARDEN**—"Our Mary"  
Queen of opera and concert. The world's most unique personality.  
**Exposition Auditorium,  
Sunday Afternoon, October 21.**

**SOUSA and His Band**  
An American institution. Thirty-first season. Sousa and 100 musicians.  
**Exposition Auditorium,  
January 4, 5 and 6, 1924.**

**SCHUMANN-HEINK**  
America's idolized singer. The world's greatest contralto.  
**Exposition Auditorium, January, 1924**

**PAVLOWA and Her Ballet Russe**  
The great Pavlowa; Novikoff and Volinine. Company of 100. New ballets, old favorites.  
**Curran Theatre, Week of January 14, 1924**

**DE PACHMAN**  
Most unique figure in the pianistic world. Only recital.  
**Exposition Auditorium,  
Thursday Night, February 7, 1924.**

**PADEREWSKI**  
Colossal giant of the keyboard.  
**Exposition Auditorium, February, 1924.**

**CHICAGO CIVIC OPERA COMPANY**  
Four Performances. Stars include Mary Garden, Chaliapin, Raisa, etc.  
**Exposition Auditorium, March, 1924**

**CHALIAPIN**  
Russia's sensational baritone. One recital only.  
**Exposition Auditorium,  
Sunday Afternoon, March 23, 1924.**

**GALLI-CURCI**  
Greatest coloratura soprano. Idol of the world.  
**Exposition Auditorium, April 27, 1924.**

**Alice Seckels "Matinee Musicales"**  
Monday Afternoons, Ballroom, Hotel St. Francis

**QUEENA MARIO**  
Last year's Metropolitan sensation. Leading star, Metropolitan and San Francisco Opera Companies.  
**Monday Afternoon, October 22, 1923.**

**JOSEPH LHEVINNE**  
One of the world's greatest masters.  
**Monday Afternoon, November 19, 1923.**

**GERHARDT**  
"Leider" singer. Peerless in her art.  
**Monday Afternoon, December 17, 1923.**

**GRIFFES GROUP**  
Edna Thomas, mezzo-soprano; Olga Steeb, pianist; Sascha Jacobinoff, violinist. Unique programs of solos and ensemble.  
**Monday Afternoon, January 14, 1924.**

**ZANELLI**  
The Metropolitan's jolly baritone. A voice of luscious beauty.  
**Monday Afternoon, March 24, 1924.**

**FERENC VECSEY**  
Hungary's greatest violinist. The brightest new star on the horizon.  
**Monday Afternoon, April 14, 1924.**

Wednesday Night, September

**LA BO**

(In  
AN OPERA  
By L. ILLIC  
Music

RODOLFO.....  
MARCELLO..... ALFRE  
COLLINE..... A  
SCHAUNARD.....  
BENOIT }  
ALCINDORO }  
PARPIGNOL.....  
UN SERGENTE.....  
UN DOGANIERE.....  
MIMI.....  
MUSETTA.....  
MOMUS.....

CONDUCTOR.....  
STAGE DIRECTOR.....  
CHORUS MASTER.....

PARI  
Act I. The garret.  
Act II. Cafe Momus.

STEINWA

Thursday Night, September

**ANDREA**

(In  
AN OPERA  
By LU  
Music BY

ANDREA CHENIER..... BENI  
GERARD..... GIUSEL  
MATHIEU.....  
FLEVILLE.....  
L'ABATE }  
L'INCREDIBILE }  
ROUGET }  
DUMAS }  
UN MAESTRO DI CASA }  
SCHMIDT }  
MADDALENA DI COIGNY.....  
LA COUNTESSA DI COIGNY.....  
MADLON.....  
BERSI.....

CONDUCTOR.....  
STAGE DIRECTOR.....  
CHORUS MASTER.....  
BALLET MASTER.....

Act I. Ballroom in Coigny's  
Act II. A Street in Paris at th  
Act III. The Tribunal of the R  
Act IV. The Prison.

STEINWAY

ber 26, 1923, at 8 o'clock

# ROME

(Italian)

IN FOUR ACTS  
BY AND P. GIACOSA  
BY G. PUCCINI

..... GIOVANNI MARTINELLI  
..... GANDOLFI (First appearance in San Francisco)  
..... DAMO DIDUR (First appearance in San Francisco)  
..... LOUIS D'ANGELO  
..... PAOLO ANANIAN  
..... GIORDANO PALTRINIERI  
..... JOSE CORRAL  
..... A. ALIBERTINI  
..... QUEENA MARIO  
..... ANNA YOUNG  
..... NATALE CAROSSIO  
..... GAETANO MEROLA  
..... ARMANDO AGNINI  
..... ARTURO CASIGLIA

IN 1815.  
Act III. The gate of Paris.  
Act IV. The garret.

PIANO USED

ber 27, 1923, at 8 o'clock

# CHENIER

(Italian)

IN FOUR ACTS  
MIGI ILICA  
U. GIORDANO

..... AMINO GIGLI (First appearance in San Francisco)  
..... PEPE DE LUCA (First appearance in San Francisco)  
..... ADAMO DIDUR  
..... LOUIS D'ANGELO  
..... GIORDANO PALTRINIERI  
..... LOUIS D'ANGELO  
..... ALBERT GILLETTE  
..... BIANCA SAROYA  
..... LELA JOHNSTONE  
..... DORIA FERNANDA  
..... RENE LAZELLE  
..... GAETANO MEROLA  
..... ARMANDO AGNINI  
..... ARTURO CASIGLIA  
..... NATALE CAROSSIO

Palace.  
The time of the Revolution.  
Revolution.

PIANO USED

## Selby C. Oppenheimer Attractions 1923-1924

### Columbia Theatre Concerts Sunday Afternoons in the Columbia Theatre

#### TITO SCHIPA

Leading tenor, Chicago Opera Company. Sensation in concert.  
Sunday Afternoons, November 4 and 11, 1923.

#### ZIMBALIST

Most popular of Russian violinists. Composer, musician, master.  
Sunday Afternoon, November 18, 1923.

#### JOSEF LHEVINNE

Russia's greatest pianist. Tone poet and technician.  
Sunday Afternoon, November 25, 1923.

#### RUBINSTEIN

Russian pianist. Already a popular favorite. Joint recital with Paul Kochanski, violinist.  
Sunday Afternoon, December 9, 1923.

#### KOCHANSKI

Newest violinistic sensation. A joint recital with Arthur Rubinstein.  
Sunday Afternoon, December 9, 1923.

#### ANNA CASE

The beautiful lyric singer. San Francisco's favorite soprano.  
Sunday Afternoon, December 16, 1923.

#### ISADORA DUNCAN DANCERS

The world's most beautiful dancing trio. Max Rabinowitsch, pianist.  
February, 1924.

#### DE GOGORZA

The popular Cuban-American baritone. Peerless recitalist.  
February, 1924.

#### JOSEPH SCHWARZ

Famous European baritone. An artist of colossal worth.  
February, 1924.

#### HAROLD BAUER

Master pianist. Joint recital with Pablo Casals, cellist.  
March, 1924.

#### PABLO CASALS

The world's greatest cellist. Joint recital with Harold Bauer, pianist.  
March, 1924.

#### JEANNE GORDON

The Metropolitan's newest contralto. A superb artist.  
April, 1924.

#### GABRILOWITSCH

Pianist-conductor-composer. Director of Detroit's orchestra. Famous recitalist.  
April, 1924.

TICKET OFFICE FOR ALL EVENTS AT  
SHERMAN, CLAY & CO.'S, SUTTER AND  
KEARNY STREETS. Phone SUTTER 6000

*One of the Finest Pianos made  
is the*

**STEINERT**

SOLD ON THE  
PACIFIC COAST  
BY

Sherman,  Clay & Co.

Kearny and Sutter Sts., San Francisco  
Fourteenth and Clay Sts., Oakland  
Sacramento . Stockton . Fresno . San Jose

**M. Steinert & Sons**

*Steinert Hall*

**BOSTON, MASS.**

**SPECIAL** - *Two Extra Performances*

Saturday Nights, Sept. 29 and Oct. 6

S A T U R D A Y ,  
SEPTEMBER 29, 8 p.m. **La Boheme**

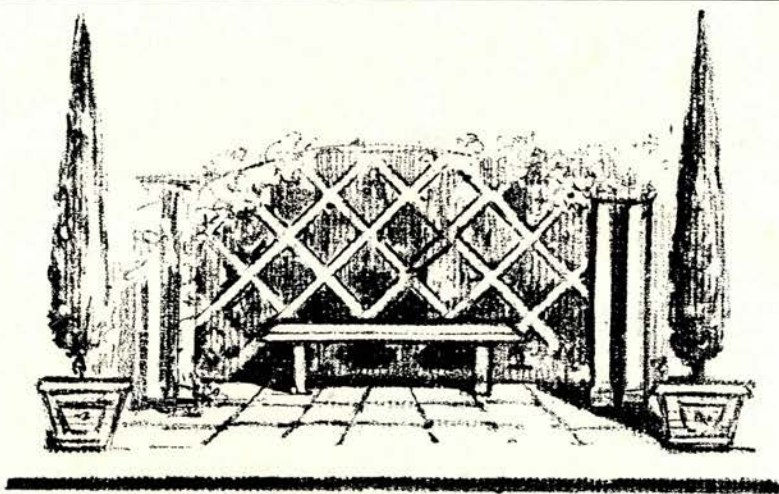
*with* Martinelli, Gandolfi, Didur, Mario, Etc.

S A T U R D A Y ,  
OCTOBER 6, 8 p.m. **Mefistofele**

*with* Gigli, Didur, Saroya, Fernanda, Etc.

*Same Great Casts as at Subscription Performances*

TICKETS NOW SELLING FOR EXTRA OPERAS



**ARTSTONE**

**CONCRETE GARDEN FURNITURE**

Benches, Urns, Flower *and* Tree Boxes, Griffins *and* Bird Baths

Showrooms, 2 *and* 4, Valencia Street, *corner of* Market St.

*Phone Hemlock 421*

**ARTSTONE DISTRIBUTING COMPANY**  
SAN FRANCISCO



# Gassner FURS

FOR smartness and distinction  
in furs—for real fur excellence,  
Gassner's is accepted by San Fran-  
cisco's most discriminating women  
as the foremost exclusive fur shop  
in the West.



*Also exclusive fur-trimmed cloth coats—the  
equals in smartness and quality of Gassner Furs*

*Louis Gassner* INC.

112 GEARY STREET  
SAN FRANCISCO

Two blocks West from Palace Hotel  
Two blocks East from St. Francis Hotel

Telephone KEARNY 5454

# Evelyn Sresovich Ware

*Pianist · Accompanist · Teacher*

Studio: 1003 Kohler & Chase Building  
26 O'Farrel Street, San Francisco

## BOX HOLDERS

*Box No.*

- 1 Mr. and Mrs. Timothy Healy
- 2 Mr. and Mrs. Sigmund Stern
- 3 Mr. and Mrs. Joseph A. Donohoe
- 4 Mr. and Mrs. Marcus Koshland
- 5 Mr. and Mrs. James Flood
- 6 Mrs. A. B. C. Dohrmann  
Mrs. F. Dohrmann
- 7 Mr. Kenneth Kingsbury
- 8 Mrs. Richard Hanna
- 9 Mrs. W. B. Bourn
- 10 Mr. and Mrs. E. S. Heller
- 11 Miss Louise Boyd
- 12 Judge and Mrs. M. C. Sloss
- 13 Mr. and Mrs. Milton H. Esberg
- 14 Mr. and Mrs. Charles W. Fay
- 15 Mrs. E. L. Eyre  
Mrs. Richard Sprague  
Mrs. M. Hall McAllister
- 16 Mr. and Mrs. P. C. Hale

*Box No.*

- 17 Mr. and Mrs. J. C. Burgard  
Mr. and Mrs. Edward Clark  
Mr. and Mrs. Joseph K. Hutchinson
- 18 Mrs. Ira Pierce
- 19 Hon. James D. Phelan
- 20 Mrs. James Edwards  
Miss Nellie Lowry  
Mrs. E. V. Cowell  
Mrs. M. Soule  
Mrs. E. C. Wright
- 21 Mrs. and Mrs. William H. Loller
- 22 Mr. and Mrs. R. I. Bentley
- 23 Mrs. O. C. Stine  
Mrs. James R. Miller
- 24 Mr. G. Merola  
Mr. Selby C. Oppenheimer
- 25 Mr. and Mrs. Robert Hayes Smith
- 26 Mr. and Mrs. Silas Palmer

## MME. STELLA RAYMOND-VOUGHT

CONCERT MANAGER

Diploma from Edmund J. Myer and pupil of Oscar Saenger, New York City

VOICE CULTURE

ORGANIST AND CHOIR DIRECTRESS FITZGERALD MEMORIAL CHURCH

Studio: 545 SUTTER STREET

Phone KEARNY 4181

*“The Garden of Allah”*

## The Samarkand

*Special Rates Now.*

For further information  
address

CHARLES B. HERVEY  
CALIPH

Santa Barbara's Persian Hotel overlooking the mountains and the sea from its own hill-top of thirty acres. Accommodations for 150. Fifty bridal suites, with all the comforts of home, without a *mother-in-law*.

OPEN ALL YEAR

GOLF, POLO, GREAT BRIDLE TRAILS



THIS PROGRAM IS PRINTED ON

**R A D I U M**  
**COATED BOOK**

*made by the world's best  
coated paper mills*

**Martin Cantine Company**

*and distributed by*

**GENERAL PAPER COMPANY**

568-576 HOWARD STREET  
SAN FRANCISCO

# THE FORTNIGHTLYS

TWENTY ONE-HOUR PROGRAMS

FEATURING:

Chamber Music - Song - Lectures - Plays - Operettas.

San Francisco Artists and Composers

*assisted by*

American Artists of International Fame

Alternate Monday Afternoons at Four-Thirty

AMERICAN PROGRAM, October 1st. San Francisco Chamber Music Society (*Elias Hecht, Founder and Manager*), Colonial Ballroom, Hotel St. Francis. Admission limited to Members and their Guests.

*Direction*

*Kearny 5454*

IDA G. SCOTT

*Kohler & Chase Building*

## The Coming Musical Season



MANAGER SELBY C. OPPENHEIMER, whose annual activities are always the index to the musical season's importance, has, as usual, mapped out a most comprehensive program for the fall, winter and spring of 1923-24. "The world's greatest artists and attractions," which is the trade-mark of this enterprising management, once again is justified by the long list of attractive offerings that will be made in the near future.

Oppenheimer has grouped the artists and attractions that he has booked into three divisions: A series of special events, which will be held in the Exposition Auditorium and in various theaters

*(Continued)*

## "The Life of The String"

A preparation which gives to all gut strings, new life, greater volume and increased lasting strength.

*Used by leading musicians.*

*Sold under a positive guarantee.*

\$1.00 per jar

1071 Monadnock Bldg. Federal Sales Corporation San Francisco, Calif.



THROUGH the production of a superior instrument it has been our privilege to serve a distinguished clientele both in this country and abroad, including such famous artists as Madame Marcella Sembrich and Mr. Vladimir de Pachmann.

## The Baldwin Piano Co.

310 Sutter Street, San Francisco

Sold in Oakland by Fox Piano Co., 582 14th St.

### THE COMING MUSICAL SEASON—Continued

and halls; a special series of popular-priced concerts in the Columbia Theatre on Sunday afternoons; and the Alice Seckels' "Matinee Musicales" series, in the ballroom of the St. Francis Hotel.

Mary Garden, whose only appearance in Northern California will be in the Exposition Auditorium on Sunday afternoon, October 21st, will mark the season's first great attraction, as well as the first of Oppenheimer's special events. These will include: Mme. Ernestine Schumann-Heink, the world's greatest contralto, in January; John Philip Sousa and his famous band of 100, at the Exposition Auditorium on January 4, 5 and 6, 1924; Anna Pavlova and her Ballet Russe, which includes Volinine, Novikoff and 100 participants, in the Curran Theatre for the entire week beginning January 14, 1924; dePachmann, the unique and venerable pianist, at the Auditorium on February 7th; Paderewski, the colossal giant of the keyboard, in February; a limited engagement by the Chicago Civic Opera Company in March, a single recital by Chaliapin in March, and recitals by Amelita Galli-Curci in April.

At the Columbia Theatre on Sunday afternoons, many of the world's foremost artists will appear, at a scale of prices ranging from fifty cents to two dollars. Tita Schipa, the leading tenor of the Chicago Opera, comes first, giving recitals on November 4th and 11th. On November 18th Efrem Zimbalist, the Russian violinist, will be the attraction. On November 25th, Josef Lhevinne, eminent Russian pianist, plays his program. A joint recital by Arthur Rubinstein, Russian pianist, and his violinistic confrere, Paul Kochanski, is announced for Sunday afternoon,

(Continued)

## The San Francisco Conservatory of Music

ADA CLEMENT and LILLIAN HODGHEAD, Directors

3435 SACRAMENTO STREET

Telephone Fillmore 898

### HEADS OF DEPARTMENTS:

Piano.....	ADA CLEMENT	Violoncello.....	WILLEM DEHE
Violin and Orchestra.....	ARTUR AKGIEWICZ	Harp.....	KAJETAN ATTIL
Theory and Orchestration.....	ALBERT ELKUS	Flute.....	M. ANTHONY LINDEN
Harmony and Ear Training.....	LILLIAN HODGHEAD	Clarinet.....	H. B. RANDALL
Voice.....	RENA LAZELLE	Pipe Organ.....	WARREN D. ALLEN
Operatic Coaching.....	GAETANO MEROLA	Interpretative Dancing.....	INGEBORG LACOUR-TORRUP

First Big Event of the Concert Season



SELBY C. OPPENHEIMER

*presents*

# Mary Garden

“OUR MARY”

OUTSTANDING “STAR” OF THE  
CHICAGO CIVIC OPERA CO.

—  
ONLY RECITAL IN  
NORTHERN CALIFORNIA

—  
WONDERFUL PROGRAM  
*Songs, Arias, etc., etc.*

—  
GUTIA CASINI  
*Violoncellist*

GEORGES LANWERYNS  
*Pianist*

*Exposition Auditorium*

Sunday Afternoon

October 21

2:45 P. M.

TICKETS NOW ON SALE at Sherman, Clay & Co.'s, San Francisco  
\$3.00, \$2.00, \$1.00 (tax added)

CHRISTINE STRANG

ANNA STRANG

MARJORIE STRANG

Telephones: Sutter 8732  
Kearny 5723OPEN FROM 11 A. M.  
TO 10 P. M.

# The Green Gate Inn

233 Grant Avenue

(Above Joseph's)

Douglas 6849

Luncheon

Tea Service

## Chas. Fashion Restaurant

TOLLINI BROS., Props.

ITALIAN and FRENCH DINNERS

Also a la Carte

GAME A SPECIALTY

243 O'FARRELL STREET  
Opp. Alcazar Theatre

SAN FRANCISCO, CAL.

### THE COMING MUSICAL SEASON—Continued

December 9th. Anna Case sings on December 16th. Following the Holiday Season, in rapid succession in this series, will be presented the popular baritone, Emilio de Gogorza; the Isadora Duncan Dancers—"the world's most beautiful dancing trio," and Max Rabinowitsch, pianist; Josef Schwarz, the European operatic and recital baritone; a joint recital by Harold Bauer, pianist, and Pablo Casals, cellist; the first appearance here in recital of Jeanne Gordon, the Metropolitan's newest contralto; recitals by Ossip Gabrilowitsch, pianist and director of the Detroit Symphony Orchestra; and other equally-famous stars.

Mr. Oppenheimer has selected as the artists for the Alice Seckels' series in the St. Francis ballroom, which concerts are given in an unusually attractive atmosphere, on Monday afternoons: Queena Mario, star of the Metropolitan and San Francisco Opera Companies, on October 22d; Josef Lhevinne, the Russian pianist, on November 19th; Elena Gerhardt, the famous "lieder" singer, on December 17th; the Griffes Group, an organization consisting of Edna Thomas, mezzo soprano; Olga Steeb, pianist, and Sasha Jacobinoff, violinist, on January 14th; Renato Zanelli, the jolly baritone of the Metropolitan Opera Company, March 24th; and Ferenc Vecsey, Hungary's greatest violinist, on April 14th.

Additional attractions to appear here during the season will include the famous Cherniavsky Trio; Josephine Lucchese, the coloratura soprano; Jean Gerardy, cellist; and the popular London String Quartet.

## THE SAN FRANCISCO SAVINGS AND LOAN SOCIETY

(THE SAN FRANCISCO BANK)

SAVINGS

INCORPORATED FEBRUARY 10th, 1868.

COMMERCIAL

One of the Oldest Banks in California,  
the Assets of which have never been increased  
by mergers or consolidations with other Banks.

Member Associated Savings Banks of San Francisco

526 California Street, San Francisco, Cal.

JUNE 30th, 1923

Assets.....	\$86,255,685.28
Deposits.....	82,455,685.28
Capital Actually Paid Up.....	1,000,000.00
Reserve and Contingent Funds.....	2,800,000.00
Employees' Pension Fund.....	414,917.52

MISSION BRANCH.....	Mission and 21st Streets
PARK-PRESIDIO DISTRICT BRANCH.....	Clement St. and 7th Ave.
HAIGHT STREET BRANCH.....	Haight and Belvedere Streets
WEST PORTAL BRANCH.....	West Portal Ave. and Ulloa St.

A Dividend to Depositors of Four and One-quarter (4 $\frac{1}{4}$ )  
per cent per annum was declared, Interest compounded  
QUARTERLY instead of Semi-Annually as heretofore.

# CHARACTER IN PRINTING

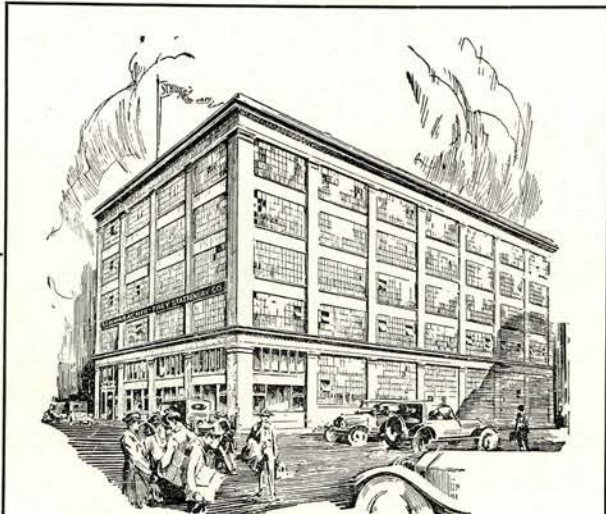
is a subtle, elusive quality, easily recognized but not so easily achieved. It is the product of sincere, straight-forward workmanship backed by thorough knowledge and fortified with adequate facilities.

Our modern five-story plant, our skilled workmen, enthusiasm and application furnish this material and enable us to produce character and quality in printing

## SCHWABACHER-FREY STATIONERY CO.

*Printers · Stationers · Lithographers · Bookbinders*

Market at Second - San Francisco - Third at Bryant

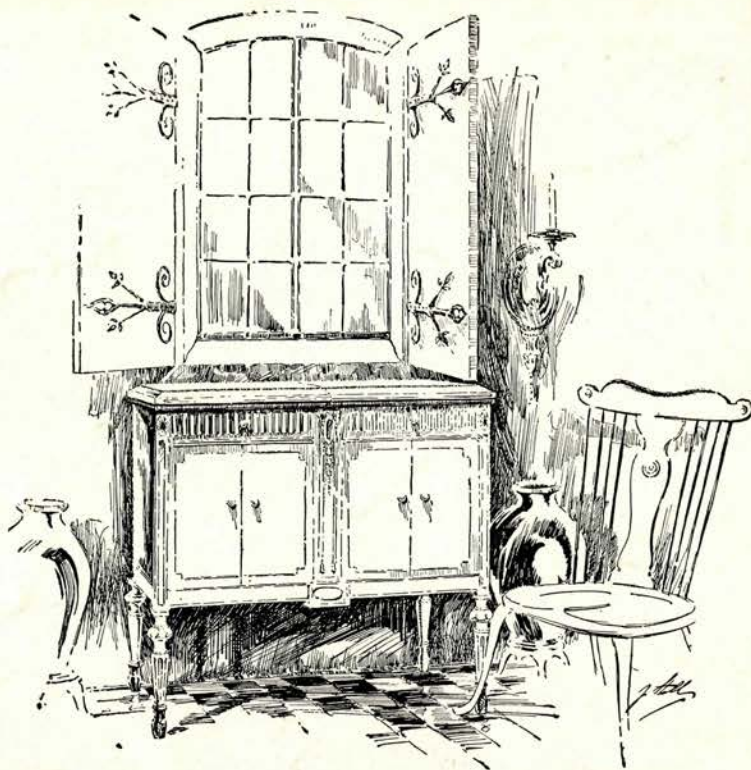


*Our Plant  
at  
Third and  
Bryant*

*Phone  
Sutter  
2600*



THREE  
GREAT  
VICTOR  
ARTISTS



## *Gigli-De Luca-Martinelli*

are here in person with the San Francisco Opera,  
and will delight you in your own home—long after  
the opera season is gone—if you have a genuine  
Victrola and their wonderful Victor records. Look  
over the Victor catalog and see what a rich feast  
by Gigli, De Luca and Martinelli awaits you—if  
you own a Victor.

*And speaking of great events—  
Have you seen the new art style Victrolas?  
Incomparably beautiful in design  
and performance.*

Sherman,  Clay & Co.

Kearny and Sutter Streets  
Oakland • Fourteenth & Clay Sts.  
CALIFORNIA • OREGON • WASHINGTON



# TWO EXTRA OPERAS!

## SATURDAY NIGHTS

### SAME GREAT CASTS

Saturday Night  
SEPTEMBER 29th

## LA BOHEME

Music by G. Puccini

Rodolfo.....	Giovanni Martinelli
Marcello.....	Alfredo Gandolfi
Colline.....	Adamo Didur
Schaunard.....	Louis D'Angelo
Benoit.....	Paolo Ananian
Alcindoro.....	
Parpignol.....	Giordano Paltrinieri.
Un sergente.....	Jose Corral
Un doganiere.....	A. Alibertini
Mimi.....	Queena Mario
Musetta.....	Anna Young

Conductor—Gaetano Merola

Saturday Night  
OCTOBER 6th

## MEFISTOFELE

Music by A. Boito

Mefistofele.....	Adamo Didur
Faust.....	Beniamino Gigli
Wagner.....	Giordano Paltrinieri
Margherita.....	Bianca Saroya
Elena.....	
Marta.....	Doria Fernanda
Pantalís.....	

Conductor—Gaetano Merola

## SAN FRANCISCO GRAND OPERA

Gaetano Merola—Director

Selby C. Oppenheimer—Manager

## Exposition Auditorium

Tickets \$4, \$3, \$2, \$1 (TAX ADDED)

### NOW ON SALE

At Sherman, Clay & Company,  
Kearny and Sutter Sts., San Francisco.